

Welcome!

We will begin in a few moments.

Central Los Angeles

September 2022

Housekeeping

Today's meeting is being recorded.



Attendee cameras are turned off and microphones are muted.



During the meeting, comments can be submitted using the Q&A icon.



For technical support, call or text 213.276.6008

A yellow speech bubble with a pointed tail at the bottom right, set against a blue background. The words "THANK YOU" are cut out of the bubble in a bold, sans-serif font, revealing the blue background behind them.

THANK YOU

Welcome and Agenda

Thank you for joining us!

Metro Announcements: Lorena Hernandez

Central LA Region: Olga Arroyo

Eat Shop Play: Wendy Cardona

Regional Connector Transit Project: Wendy Cardona and Lorena Hernandez

East Side Access Improvement Project: Katrice Candler

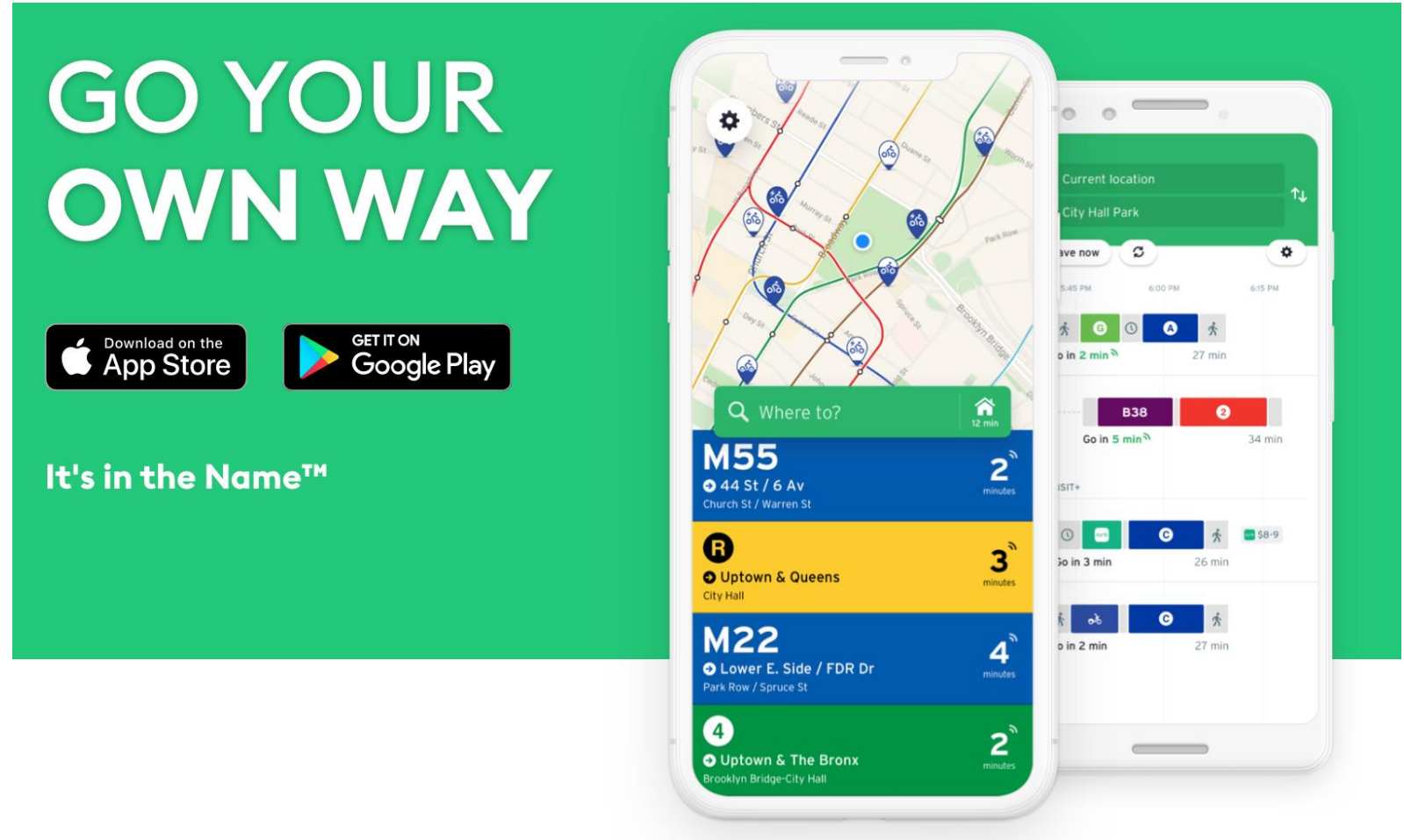
Center St Project: Katrice Candler and Mayen Alcantara

Division 20: Ned Racine

Agency Announcements

Transit App:

- Bus and rail schedule information





Easy and anonymous way to connect with Metro Security anytime



Free transit for students with GoPass!

Students at participating K-12 schools and community colleges ride for free on Metro and other transit agencies.

To find out if your district is participating, contact your school or visit metro.net/gopass.



Metro

Tap into savings with the LIFE Program.

We've made it easier to apply to the program, which offers deep discounts for low-income riders.

To see if you qualify and apply online, visit *metro.net/life*.



Metro[®]

SIGN UP AND GET 90 DAYS OF FREE RIDES.

Discounted Fares / LIFE Program

90 Days Free Fares for New LIFE Riders

Discounted Prices (Buy a pass, Save Half thru December 31, 2022)

1-Day, 7-Day and 30-Day passes have been discounted a whopping 50 percent.

Pass fares are:

- \$3.50 for a Day Pass
- \$12.50 for a Weekly Pass
- \$50 for a 30-Day Pass

Discounted pass fares are now available for purchase at Metro TAP vending machines, Metro Customer Centers, TAP retail vendors throughout L.A. County and on taptogo.net.

Low Income Fare Is Easy (LIFE) Program

New LIFE riders will get 90 days of free rides (Promotion runs through December 31, 2022)

- \$26 for a 30-day pass (regular \$76)
- \$6.50 for a 7-day pass (regular \$19.50)

To sign up for the LIFE program visit metro.net/life

LA River Path Upcoming Community Meetings

Join for an update on the LA River Path

Thursday, September 29, 6 to 8pm

Link: bit.ly/larpsept29

Call-In: 877.853.5247 (toll free)

Webinar ID: 826 8465 3402

Saturday, October 1, 10am to 12pm

Metro Headquarters, Plaza Level

1 Gateway Plaza

Los Angeles, CA 90012

Saturday, October 1, 10am to 12pm

Link: bit.ly/larpoct1

Call-In: 669.444.9171

Webinar ID: 870 7001 9266

All Metro meetings are held in ADA accessible facilities and are accessible by transit. ADA accommodations and translations available by calling 213.418.3422 at least 72 hours in advance.

For project updates, visit www.metro.net/lariverpath

Central LA Project Team

Centralized communications approach with the community and projects

Core community relations team

Assist with construction related comments and concerns

Serve as a conduit of community priorities within Metro

Projects:
Div. 20 * EAIP * Metro Center Project * Regional Connector

Central Los Angeles Projects

Project	Status	Projected Completion
Regional Connector	Construction	2022
Eastside Access Improvements Project	Construction	2022
Center Project	Construction	2023
Div. 20 Portal Widening & Turnback Facility	Construction	2025

Central Los Angeles Projects: What's Next

- > Next Meeting: November 17, 2022
- > Let us know your thoughts
- > [Survey](#)



213-922-1111



Centrallaprojects@metro.net



An illustration of a transit station. In the foreground, a yellow and black train is stopped at a platform. The train has "Metro Rail" written on its side and a "Go Metro" sign above the door. A person is standing near the train door. To the left, a set of stairs leads up to an upper level. Several people are walking on the stairs. In the background, a city skyline is visible under a yellow sky. One building is labeled "Rose Bowl".

Next stop: the missing link.

REGIONAL CONNECTOR TRANSIT PROJECT

Introductions

Regional Connector Project Team

Project Management:

- Mat Antonelli
- Huburt Kang
- Tung Vu

Regional Connector Constructors:

- Ivan Yee
- Philip Mateo

Community Relations:

- Olga Arroyo
- Lorena Hernandez
- Wendy Cardona
- Ginny Brideau

Art Program:

- Mayen Alcantara
- Jennifer Lieu

Community Leadership Council (CLC)

CLC Members

Little Tokyo/Arts District

- > Chris Aihara, Co-Chair
Little Tokyo Community Council
- > Miguel Vargas, Co-Chair
Arts District LA BID

Historic Broadway

- > Vahn Babigian, Co-Chair
Metropolitan News

Grand Av Arts/Bunker Hill

- > Dave Thompson, Co-Chair
Brookstone Properties

Grand Av Arts/Bunker Hill

- > Jamie Fang, Co-Chair
Promenade, Orchids.com

Flower St/Financial District





- > Michael Shilstone, Co-Chair
Central City Association
- > Tom Jung, Co-Chair
Los Angeles Central Library

At-large Members

- > Ron Lozano, Consultant
- > Joel Wynton, Stakeholder

Project Overview

- > 1.9-mile underground light-rail system
- > Three underground stations
 - > Little Tokyo/Arts District (1st St/Central Av)
 - > Historic Broadway (2nd St/Broadway)
 - > Grand Av Arts/Bunker Hill (2nd Pl/Hope St)
- > 90,000 daily passengers expected
- > Slated to open for rail passenger service in 2022

-  Existing Metro Rail & Station
-  Regional Connector & Station (under construction)
-  Metro Silver Line & Station
-  Amtrak/Metrolink

Subject to Change 17-1328 ©2017 LACMTA



Gold continues along current Expo Line route to Santa Monica.

Blue continues along current route to Long Beach.

Blue continues along current Gold Line route to Azusa.

Gold continues along current route to East LA.

Operational Plan

- > Board approved October 2020
- > Connect the L Line to the A and E Lines
- > One-seat ride between Azusa and Long Beach; East LA and Santa Monica



Project Update

Eat Shop Play

Eat Shop Play highlights local mom and pop businesses in DTLA and Little Tokyo, especially eateries and specialty businesses operating pick-up and delivery during the past months.

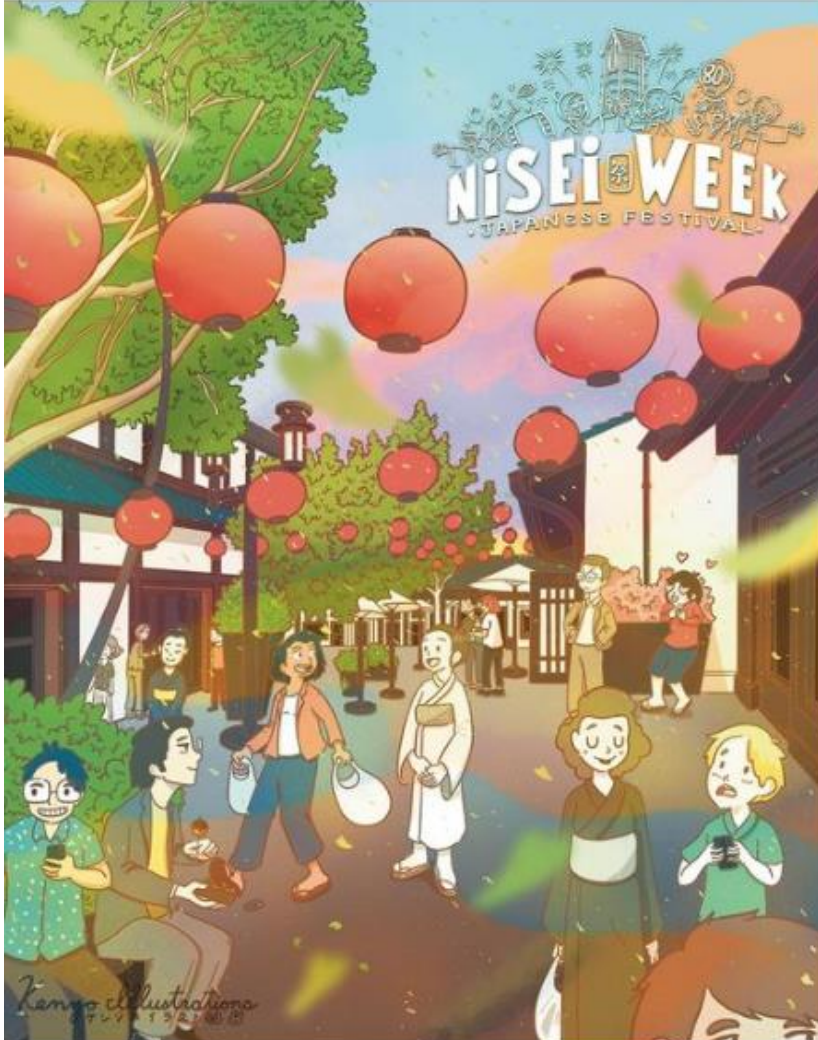
The Eat Shop Play DTLA and Little Tokyo programs continue supporting local businesses as construction progresses by promoting them through regular social media posts and newsletters to over 6,000 community members.



Social Media Spotlights

M Metro Regional Connector
August 15 · 🌐

From now to Aug. 21st, drop by Little Tokyo for their 80th Nisei Week celebration, bringing the past to the present for generations.
[#EatShopPlay](#) [#LittleTokyo](#)
Support Local Businesses... See more



The illustration depicts a vibrant street scene for the Nisei Week Japanese Festival. The street is lined with traditional Japanese buildings and large, glowing red paper lanterns. People of various ages and ethnicities are shown walking, shopping, and socializing. In the foreground, a man in a green shirt is looking at his phone, while a woman in a white kimono carries a shopping bag. The background shows more festival-goers and a large tree with green leaves. The text 'NISEI WEEK JAPANESE FESTIVAL' is prominently displayed in the upper center of the illustration.

Kenny Illustrations

M Metro Regional Connector
August 17 · 🌐

It might be a little early to start talking lunch...but...



The advertisement features a white rectangular plate of sushi on a wooden table. The plate contains six pieces of nigiri sushi: two salmon, two yellowtail, and two blue fin chutoro. A purple orchid garnish is placed on the left side of the plate, and a small portion of pickled ginger and wasabi is on the right. The background is a solid orange color with the text 'Fatty Fish Set' in a white, serif font. Below the image, the text reads '6 piece set: 2 salmon, 2 yellowtail, 2 blue fin chutoro' and 'ORDER IT NOW ONLY AT TAMON SUSHI!'. The Tamon Sushi logo is in the bottom right corner.

Fatty Fish Set

6 piece set:
2 salmon, 2 yellowtail, 2 blue fin chutoro




ORDER IT NOW ONLY AT
TAMON SUSHI!

TAMON Sushi
August 16 · 🌐

Let's fight the summer heat with the Fatty Fish Set (\$16)!

This menu item is a 6 piece set with 2 salmon, 2 yellowtail and 2 blue fin chutoro.
Some fun facts... See more

Project Look Ahead

Activity	Little Tokyo/Arts District	Historic Broadway	Grand Av Arts/Bunker Hill	Flower St/Financial District
Construction > Stations	Concludes 2022			
Civil Restoration > Sidewalks, final paving & striping, tree planting, lighting, etc.	Sept. 26 - 29, 2022 1st St and Central Av	Late 2022 / Early 2023	Late 2022 / Early 2023	Sep. 24 - Oct. 24, 2022 weekends only (Flower St, 3rd St to 6th St)
L Line (Gold) service interruption	Concludes 2022	-	-	
Testing	2022			
Revenue Operations	2022			

Rail Activation Activities

- Regional Connector system integration to the operational system of the E (Expo), A (Blue), and L (Gold) is nearing 50 percent completion
- Emergency simulation drills at each of the stations are planned for late October, early November
- California Public Utilities Commission (CPUC) certification is required to open the line for revenue operations



Project Wide Civil Improvements

An architectural rendering of a modern transit station. The station features a prominent glass and metal structure with decorative panels. The panels are adorned with colorful, stylized patterns in shades of purple, blue, and orange, depicting traditional Japanese architectural elements like torii gates and a rising sun. The station is situated in an urban environment with palm trees and other greenery in the background. A 'Metro' logo is visible on a building to the left. People are shown walking around the station, and a bicycle is parked nearby. The overall scene is set during the day under a clear sky.

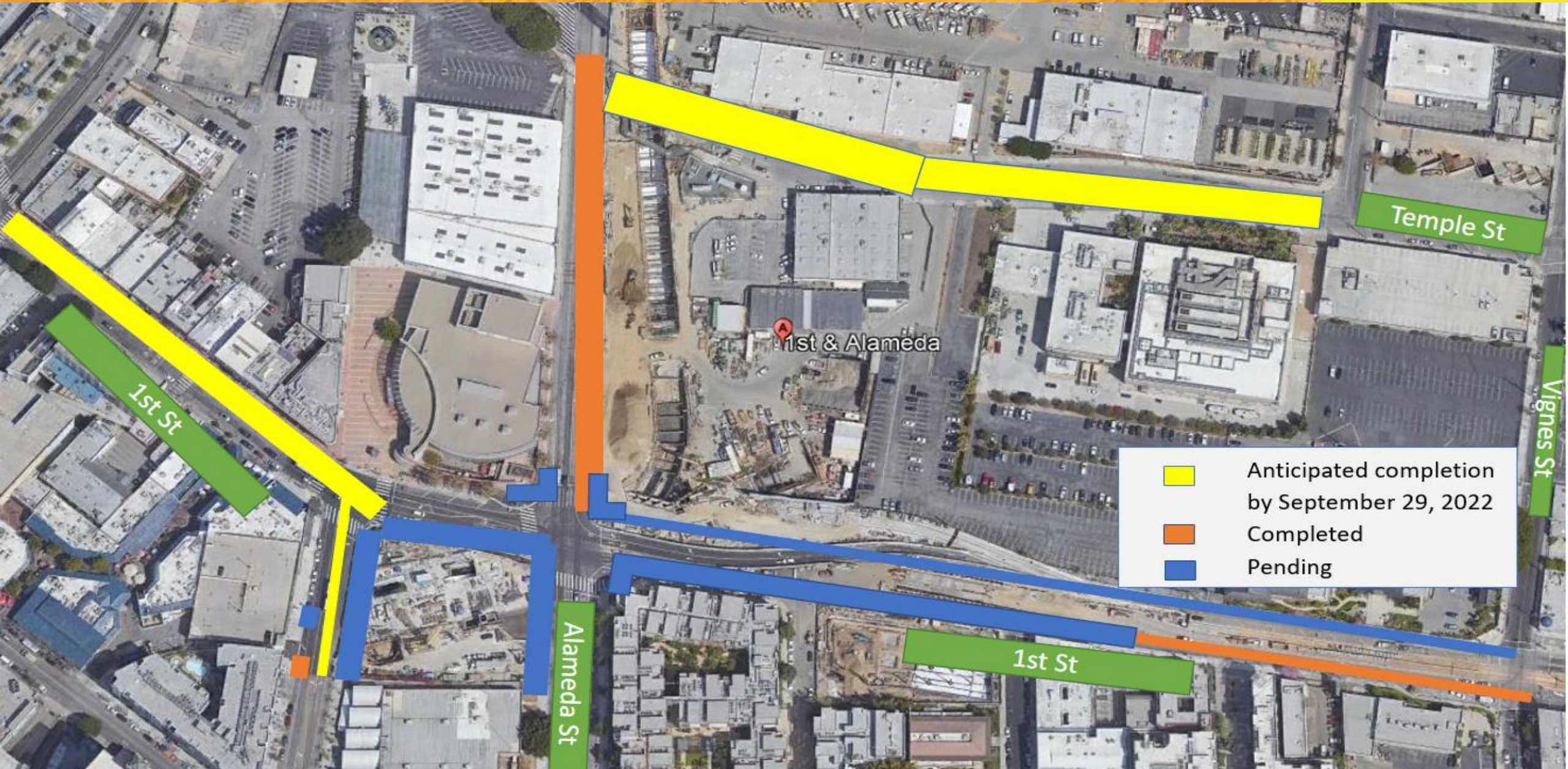
Little Tokyo/Arts District Station

Artist: Clare Rojas
Location: Glass entry pavilion

Little Tokyo/Arts District Station: Construction is Advancing



Civil Improvements: Little Tokyo Area



Civil Improvements: Little Tokyo Area

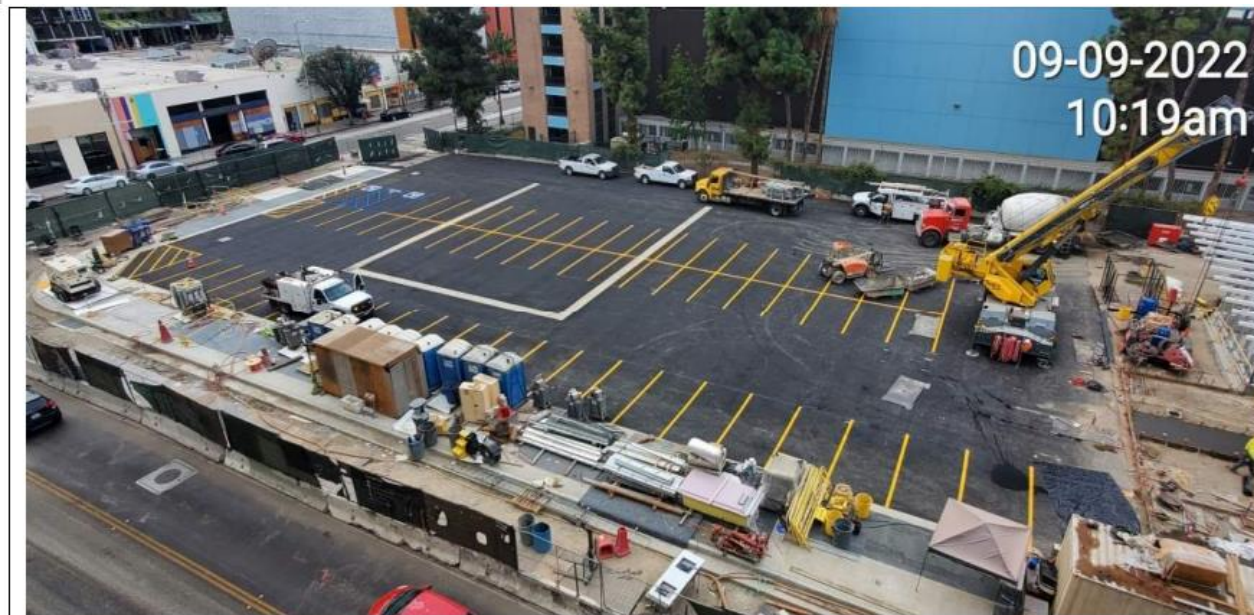
Location	Date	Access
<p>Full Street Closures</p> <ul style="list-style-type: none">Alameda St, from 1st St to Commercial StTemple St from Alameda St to Garey St	<ul style="list-style-type: none">7 pm, Friday 9/23 to 7 pm, Sunday, 9/25	<ul style="list-style-type: none">Local access maintained.Thru traffic use alternative routes: SB Alameda, 2nd St, San Pedro St, Vignes St
<p>Full Street Closures</p> <ul style="list-style-type: none">1st St, from San Pedro St to Alameda StCentral Av, from 1st St to 2nd St	<ul style="list-style-type: none">Monday, 9/26 at 7 am to Wednesday, 9/28 at 9 pmThursday, 9/29, from 7 am to 9 pm	<ul style="list-style-type: none">Local access maintained.Thru traffic use alternative routes: Temple St, 2nd St, Vignes St

An architectural rendering of the Historic Broadway Station glass entry pavilion. The scene is viewed from an elevated perspective. The central focus is a modern, multi-level glass and steel structure with a prominent glass entry pavilion. To the left, a large mural on a wall reads "THE PEOPLE UNITED NEVER DEFEATED". The station platform is populated with various human figures, including a person with a stroller, a person with a cane, and a person pushing a bicycle. The surrounding area includes a sidewalk, trees, and a street with cars. The overall design is clean and modern, with a focus on accessibility and public space.

Historic Broadway Station

Artist: Andrea Bowers
Location: Glass entry pavilion

Historic Broadway Station Construction is Advancing



Parking lot striping completed east of station entrance



Placement of architectural concrete paving at the east section of Broadway Plaza

Civil Improvements: Historic Broadway



Broadway

Spring St

Main St

2nd St

Station

- Completed
- Pending

Grand Av Arts/Bunker Hill Station

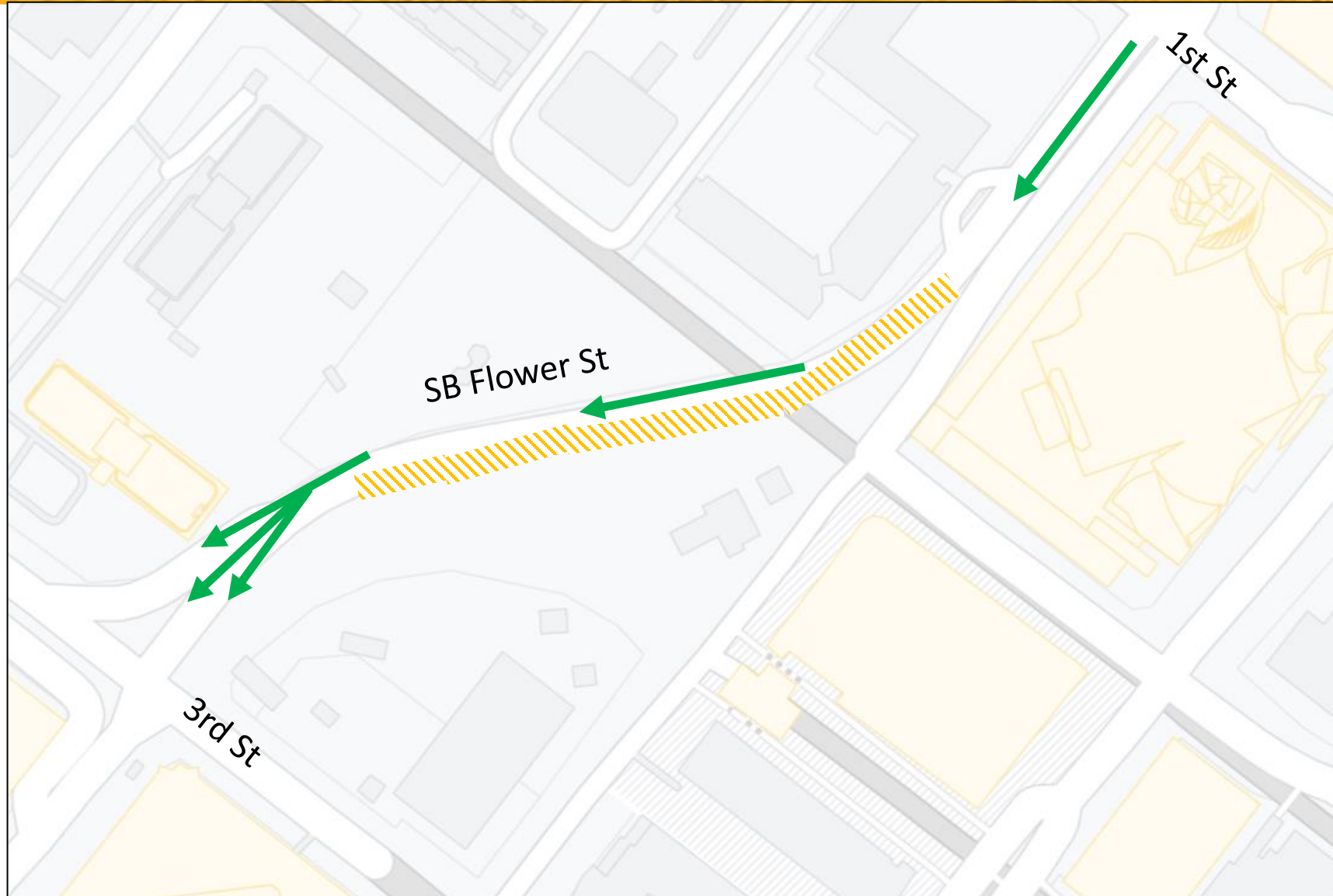
Artist: TBD

Location: Glass Entry Pavilion

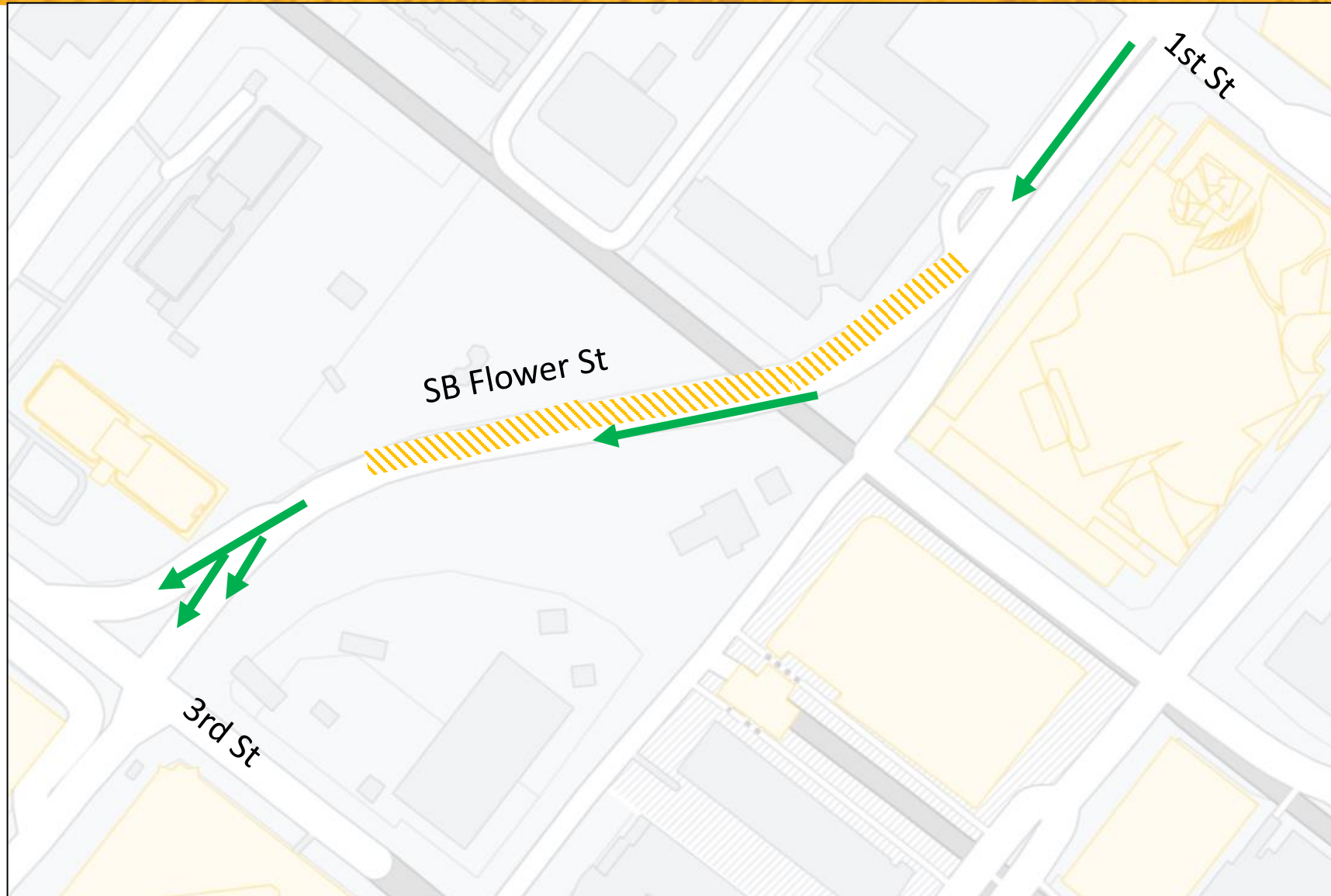
Grand Av Arts/Bunker Hill Station Construction Advances



Southbound Flower St Restoration: Phase 1



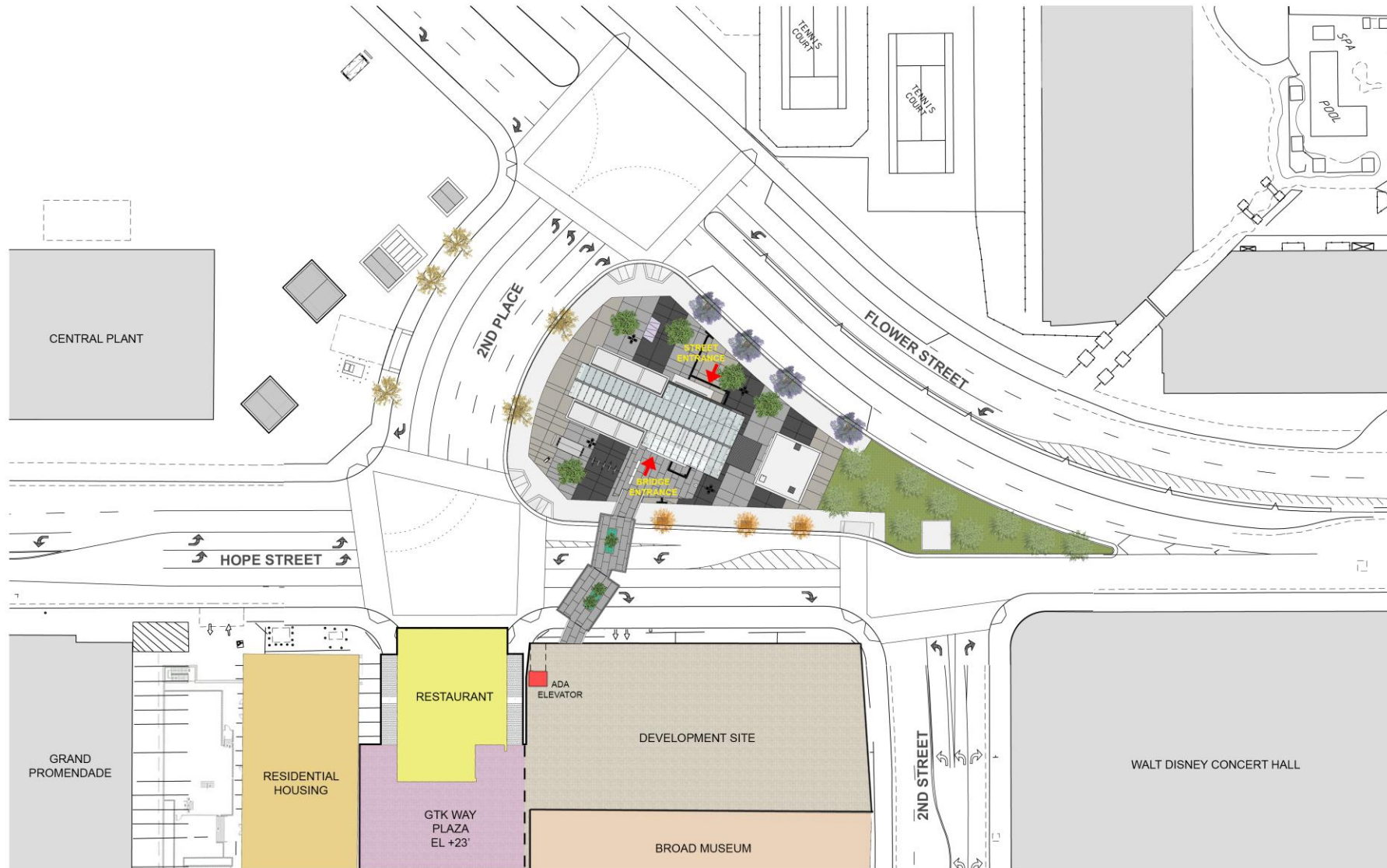
Southbound Flower St Restoration: Phase 2



Southbound Flower St Restoration: Activity Summary

- Street restoration
 - Southbound Flower St, 1st St to 3rd St
 - Two phases, each lasting 5 weeks
 - Maintains one thru traffic lane
 - Anticipated to start Fall 2022
 - Anticipated daytime and late evening work hours

Final Street Reconfiguration Around Station



Flower Street Restoration

Anticipated Closure Schedule	Phase and Activity	Closure Limit
7pm Sat 9/24 to 5am Mon 9/26	Phase 1 Grind/Overlay	Flower St, 4 th St to 5 th St (4 th St to the Westin Bonaventure Guest Loading Zone)
7pm Sat 10/1 to 10pm Sun 10/2	Phase 1.1 Grind/Overlay	Flower St, 4 th St to 5 th St (Westin Bonaventure Guest Loading Zone to south of City Group/Westin Bonaventure pedestrian bridge)
7pm Fri 10/7 to 5am Mon 10/10	Phase 2 Grind/Overlay	Flower St, 4 th St to 5 th St (south of City Group/Westin Bonaventure pedestrian bridge to 5th St)
7pm Fri 10/14 to 5am Sun 10/17	Phase 3 Grind/Overlay	Flower St from 5 th St to 6 th St
7pm Fri 10/21 to 5am Mon 10/24	Phase 4 Restriping	Flower St, 3 rd St to Wilshire Blvd

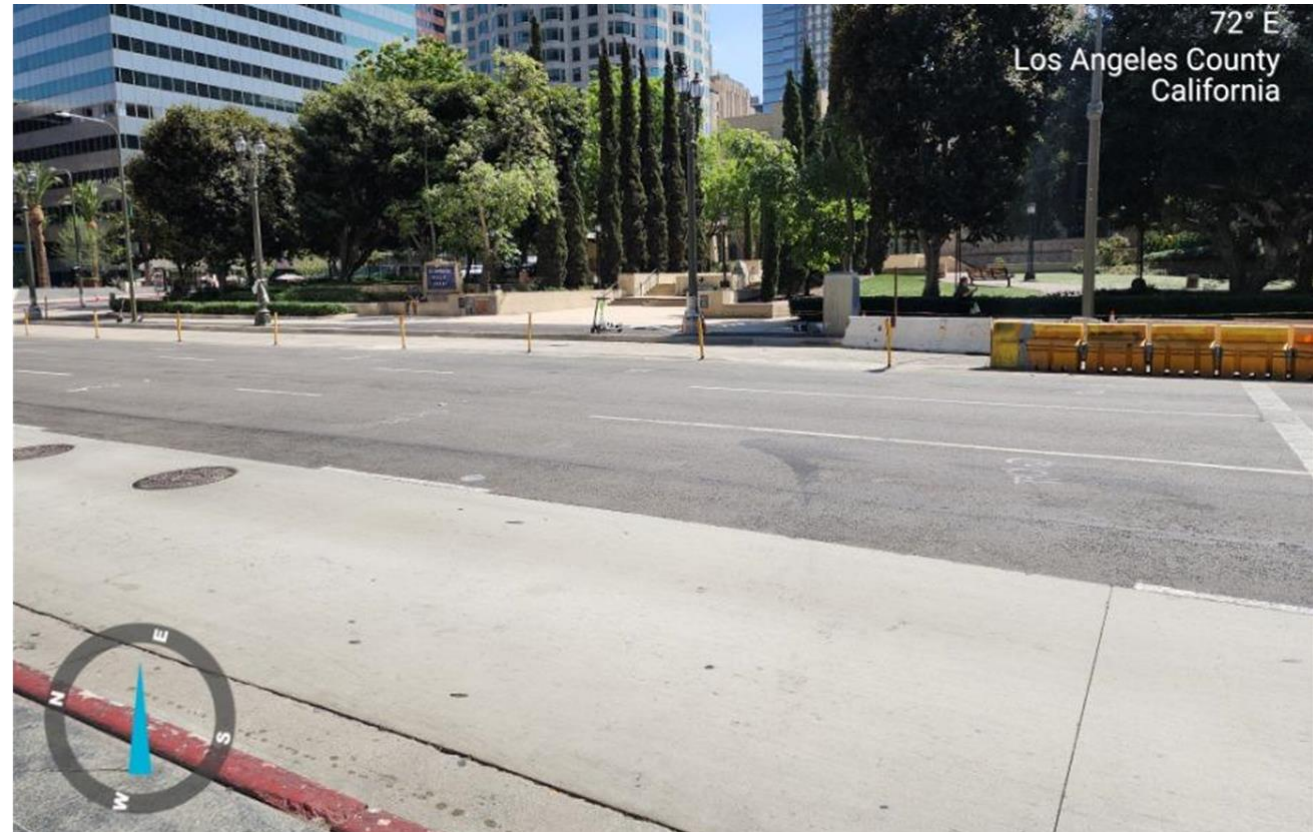
Flower St/Financial District

Before



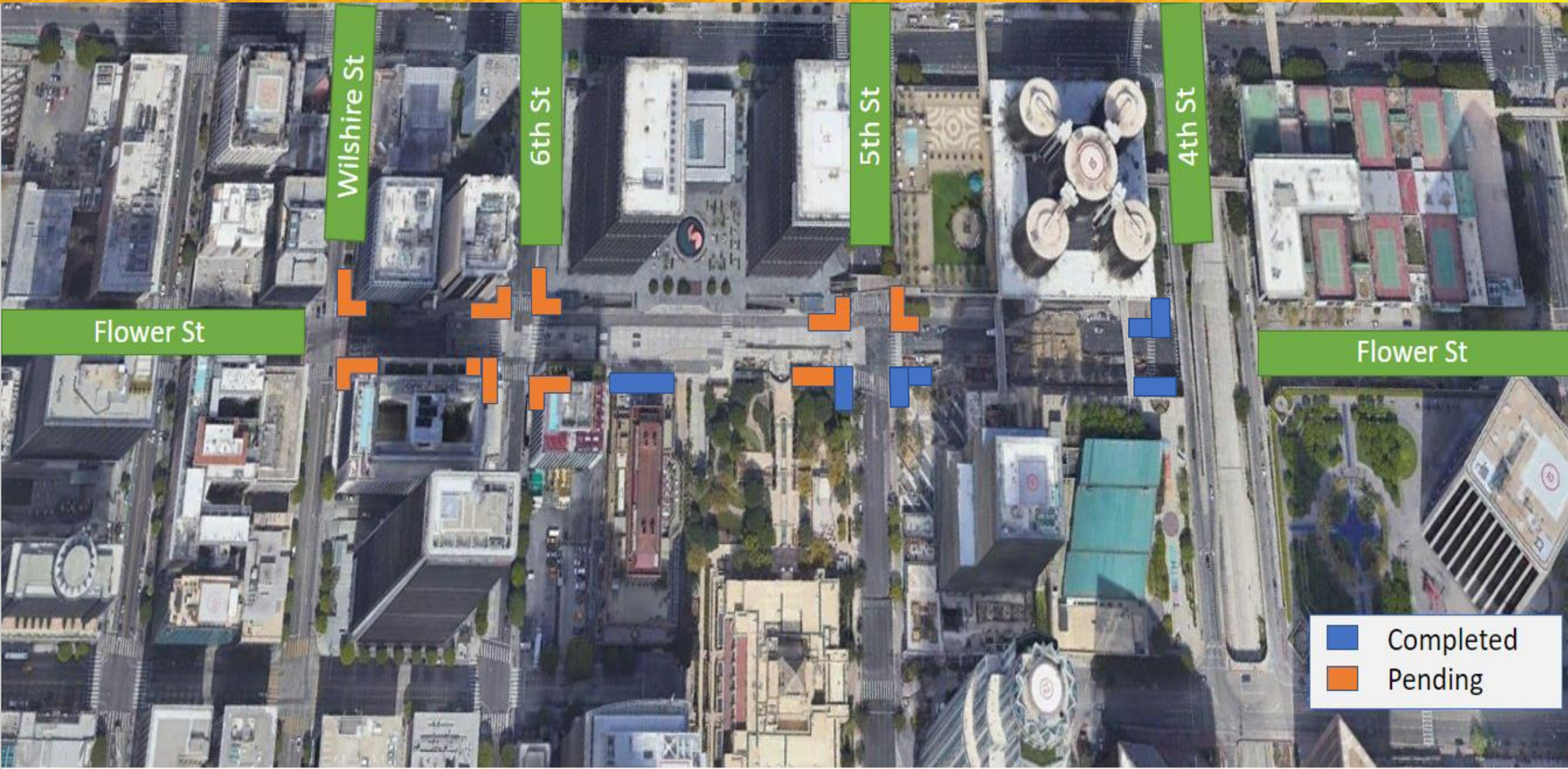
January 2022

After



September 2022

Civil Improvements: Flower St/Financial District



Community Outreach and Engagement



Construction notices



Stakeholder briefings



Door-to-door distribution within ½ mile radius



Email notice distribution



Posting on Next Door



Postings on Facebook and Twitter



Waze map integration



Project website

Stay Connected



213.922.7277



regionalconnector@metro.net



www.metro.net/regionalconnector

Questions?



Eastside Access Improvements Project (TIGER Grant)

Meet the Team

Rafi Zamani,
Construction
Project Manager

Olga Arroyo,
Community
Relations
Manager

Katrice Candler,
Principal
Community
Relations Officer



Project Overview

The Eastside Access Improvements will implement streetscape, pedestrian safety and bicycle access improvements within a ½mile radius around the future Metro Little Tokyo/Arts District Station at 1st/Central.



Walk/Bike Esplanade



Wayfinding Signage



Class II BikeLanes



Crosswalk Installation



Storm Parkways
(Biowales)



Decorative Crosswalk
Restoration



Street Trees



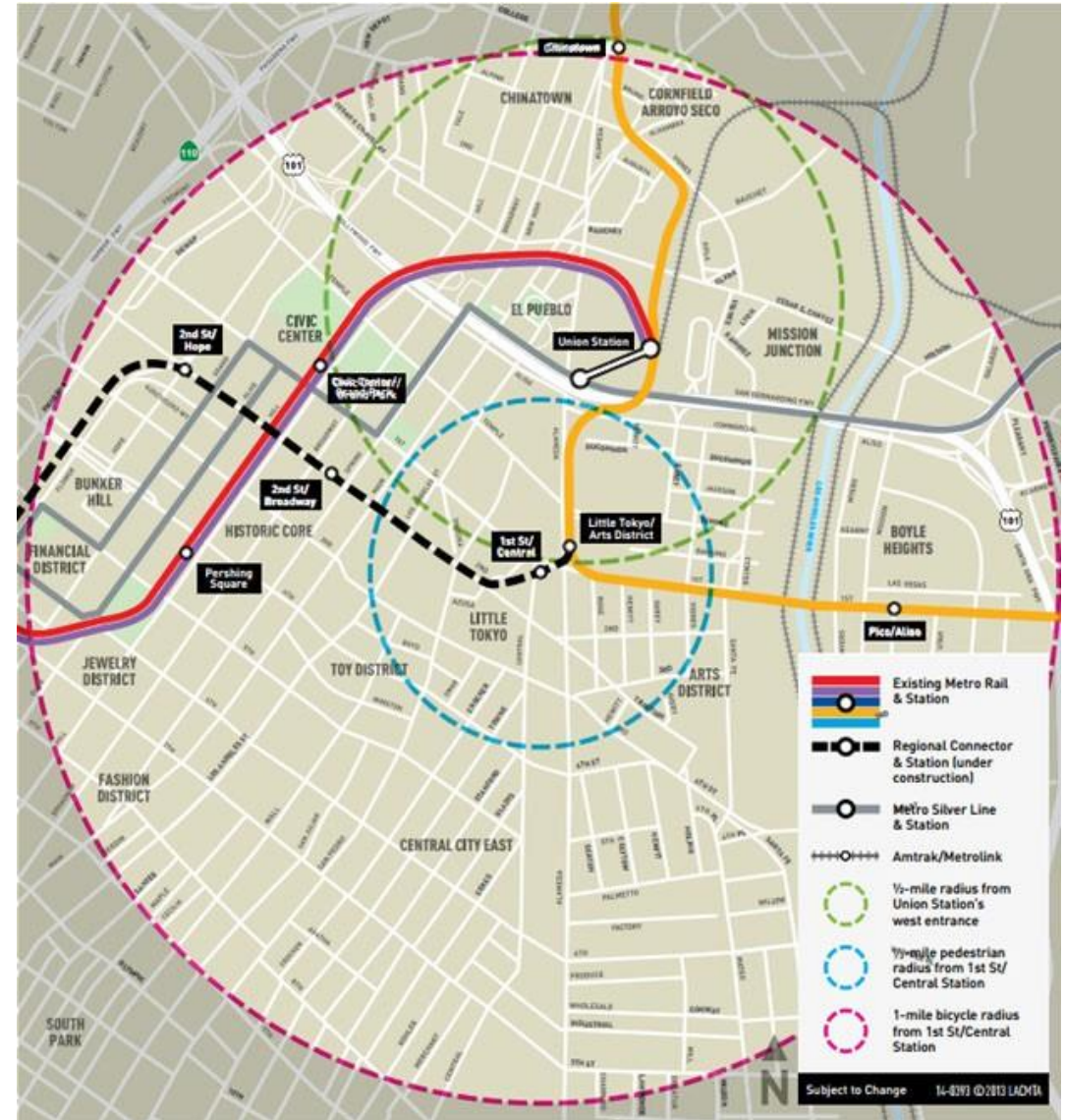
Street Furniture
Restoration



Street Light LED
Conversion



ADA CurbRamp
Installation



Project Timeline

March 18, 2021: Metro Board of Directors Approved Project

- > Budget 29.7 Million Investment

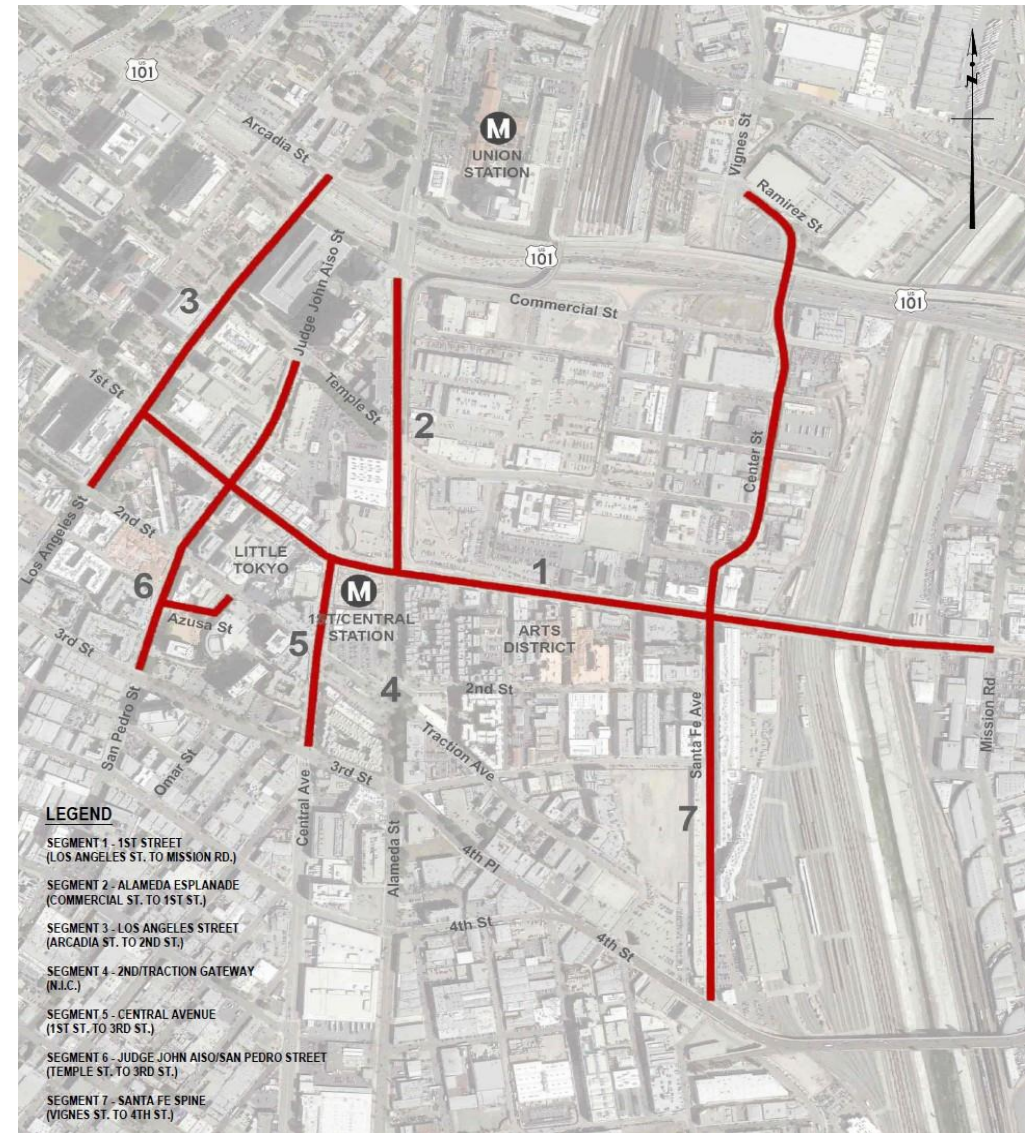
July 2021: Contractor notice to proceed.

- > Construction process initiated

Construction Duration

September 2021 to December 2022

This includes completion of Alameda Esplanade



Completed: Luminaire Work

1st St at Judge John Aiso St



3rd St at Judge John Aiso St



Completed: Decorative Crosswalk Work



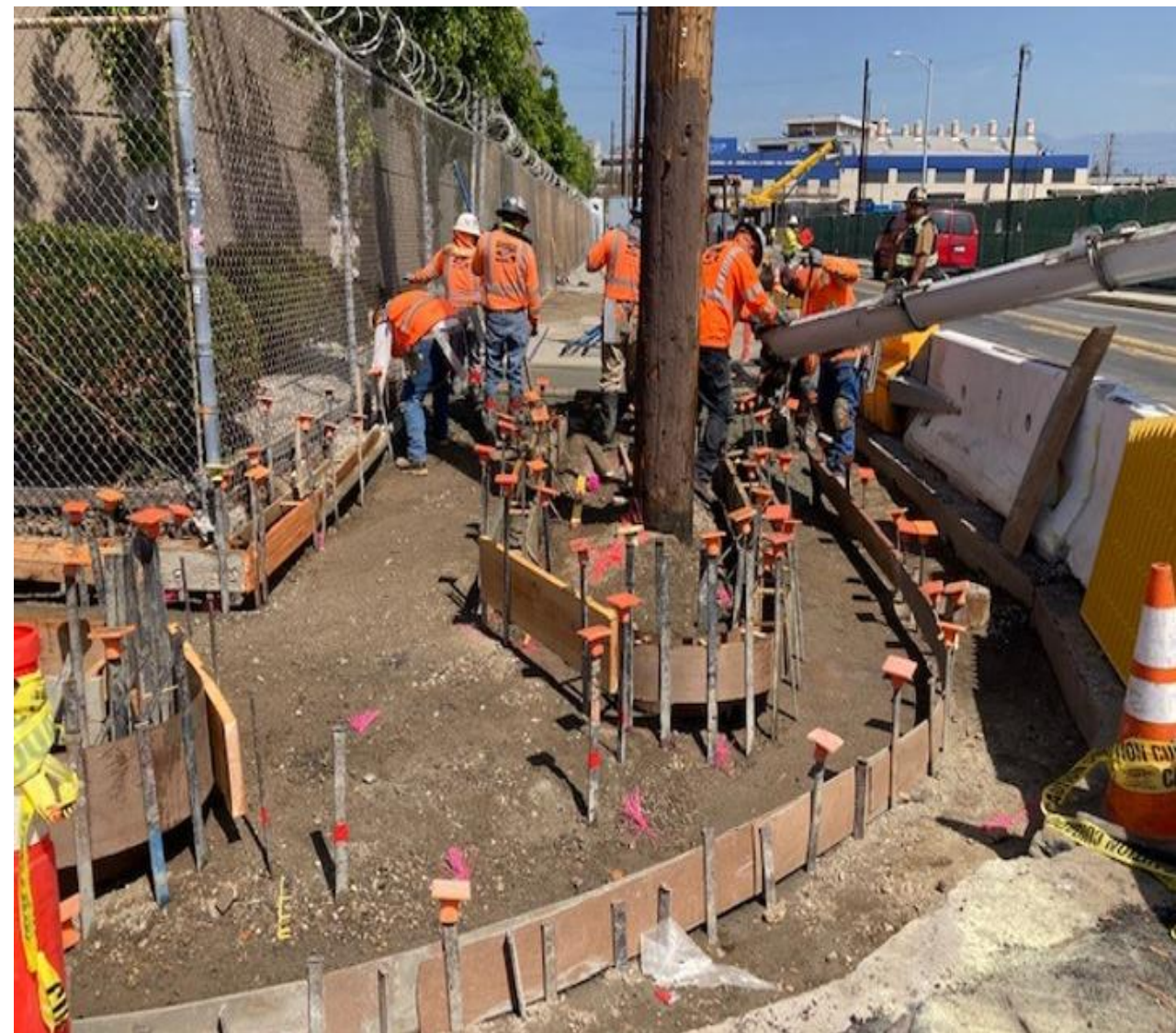
Completed: Streetlight and Pedestrian Signal Light Installations



Mid-block Crossing on Santa Fe Av between 3rd and 4th St



Completed: New ADA Curb Ramp Installations



Center St / Jackson St

Completed: Moon Bench Work

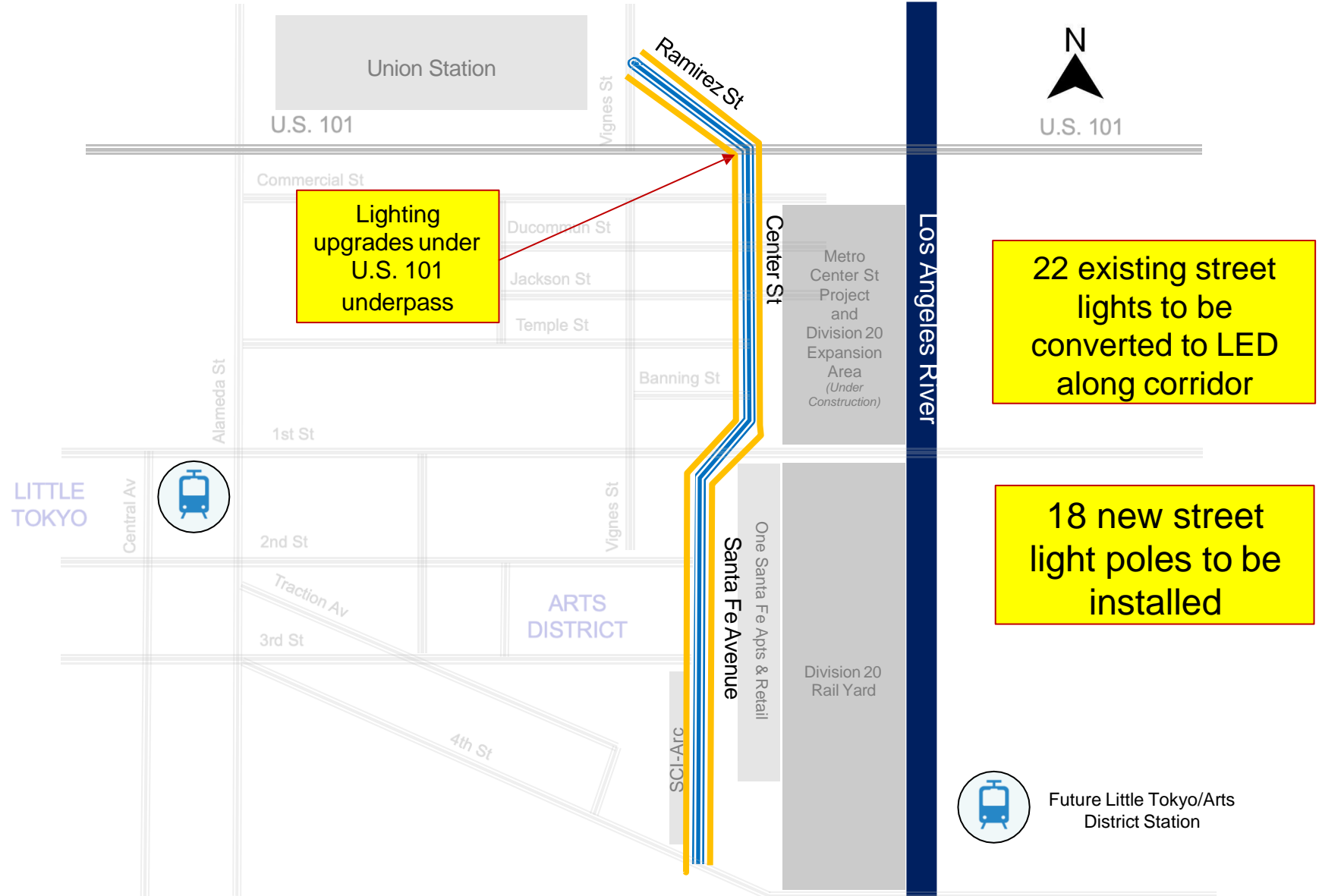


Segment 7: Santa Fe Spine to Arts District



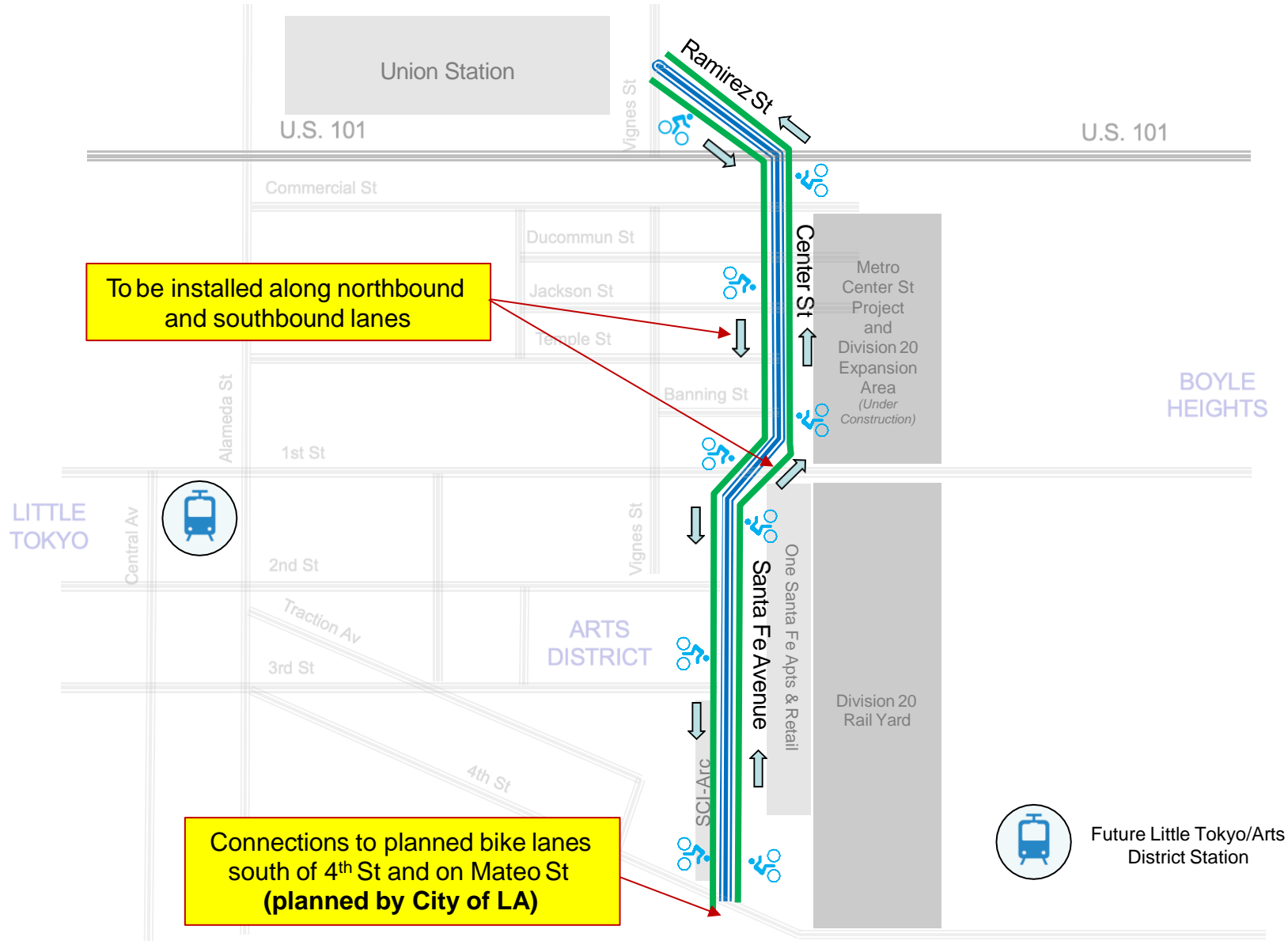
Santa Fe Av at 3rd St, looking south

Segment 7: Santa Fe Spine to Arts District Street Light Improvements & Upgrades

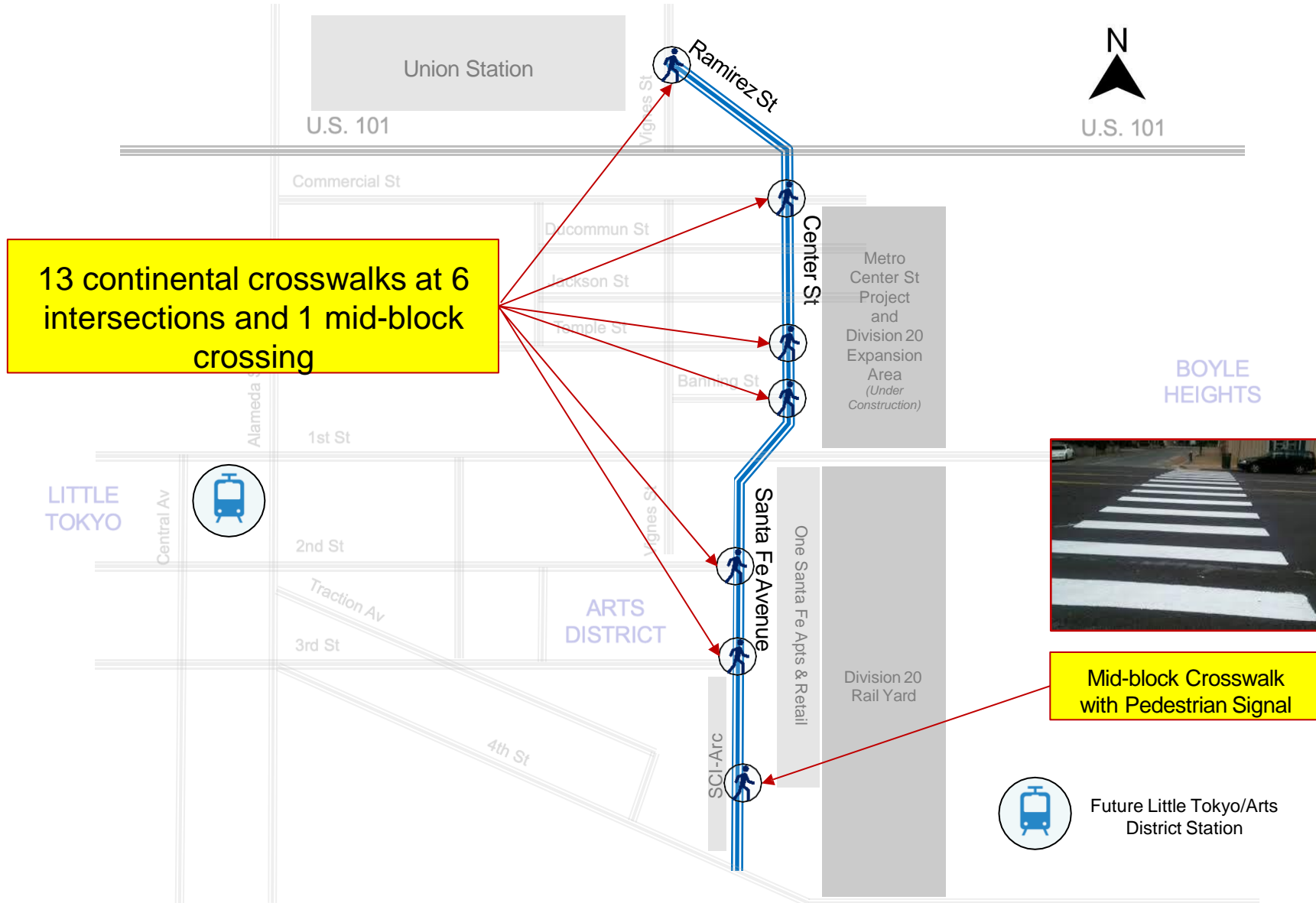


Future Little Tokyo/Arts District Station

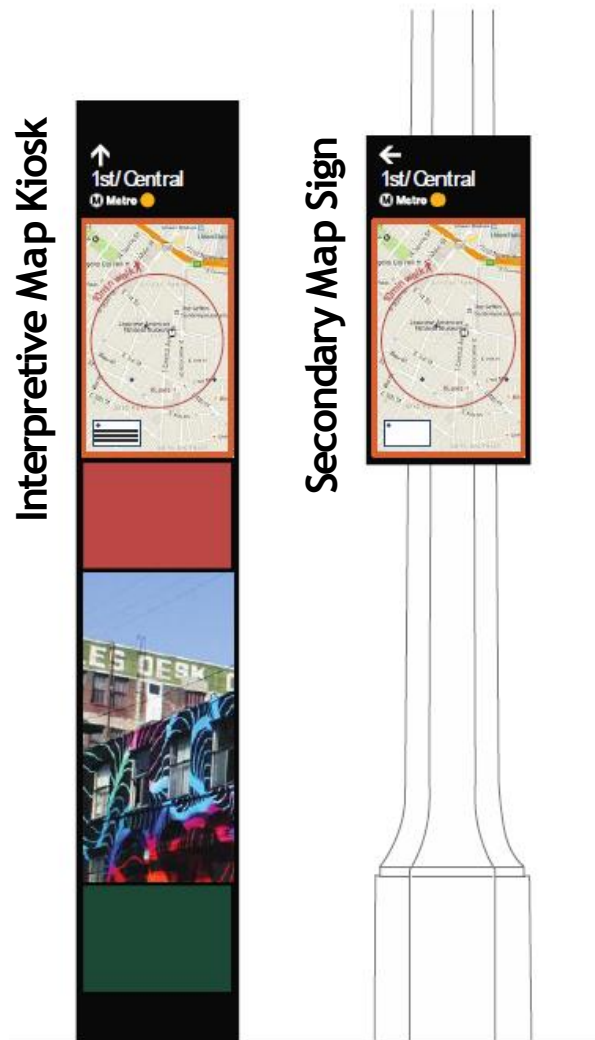
Segment 7: Santa Fe Spine Class II Bike Lanes



Segment 7: Santa Fe Spine Crosswalk Improvements



Wayfinding Signage Design



Interpretive Map Kiosks

- > 10 kiosks: (8) Little Tokyo (2) Arts District
- > Dimensions: 6'8" x 1'2" x 8"
- > Eight static graphic panels per kiosk, may vary per location
- > Installation on city sidewalk

Secondary Map Signs

- > 23 signs: (18) Little Tokyo (5) Arts District
- > Dimensions: 2'4" x 1'2" Sign
- > Installation on existing street poles

Signage Design

- > Panel content completed
- > Anti-graffiti coating



**Graphic Design subject to community input*

Segment 2: Alameda Esplanade



Alameda St at 1st St, looking north

EAIP Alameda Esplanade Improvements Complete



K-Rail removal - Alameda St and Commercial St



Project Timeline

- Wayfinding Signage Installation in Arts District and Little Tokyo TBD to coincide with station opening
- Alameda Esplanade: Anticipated completion by end of December 2022

The following work is anticipated for September/October 2022

Arts District

Activity	Locations
Street light pole installations	2 on Center St between Jackson St and Ducommun St
Slurry seal and striping for bike lanes (Class II)	Along Santa Fe Spine
Pedestrian light activation	Mid-block crossing on Santa Fe Av between 3 rd St and 4 th St



Project Timeline

The following work is anticipated for September/October 2022

Little Tokyo

Activity	Locations
Street light pole installations	<ul style="list-style-type: none">• 1 on Los Angeles St between 1st St and 2nd St• 1 on Central Av between 1st St and 2nd St
Slurry seal and striping for bike lanes (Class II)	Los Angeles St between 1 st St and 2 nd St
Concrete restoration ➤ Sidewalk panels	Los Angeles St (westside) between 1 st St and 2 nd St
Improvements	Hashimoto Plaza / Azusa St
Tree installations	4 throughout Little Tokyo



Stay Connected



213.922.1111



centrallaprojects@metro.net



www.metro.net/eastsideaccess



Questions?





Metro Center Project



Meet the Team

Program Management

Jeanet Owens

Project Executive, Metro

Robert Gummer

DEO, System Security & Law
Enforcement

Vincent Chio

Project Manager, Metro

Sheida Roghani

Project Manager, Construction Support

Amoroso – Contractor

Nathan Berkey

Project Manager, Amoroso

Community Relations

Olga Arroyo

Manager

Katrice Candler

Principal Community Relations
Officer

Art & Design

Mayen Alcantara

Sr. Manager

Allison Porterfield

Sr. Specialist



Metro Center Project Overview and Purpose

- > The Metro Center Project is an essential and secured facility that support the entire Metro Bus and Rail systems across 88 cities in LA County including expansions in Measure R and Measure M projects.
- > A 26,000-square-foot one-story building, with a second-story option to be built in the future, slated to open in 2023.



Draft – Subject to Change

Sustainability LEED Gold Certification

- > For a building with over 200 personnel, only 53 parking spaces (including 10 with electric vehicle charging) are provided on-site as Metro intends to shuttle most of the employees between Union Station and Metro Center Project with service running every 13 minutes.
- > On-site Bike racks and new bike lane on Center Street will promote walkability
- > LED light fixtures and other energy efficiency measures
- > Drought tolerant and water efficient landscaping and use of ultra-low flow fixtures throughout the building
- > Low-impact development (LID) measures including an underground cistern for reuse of rainwater.
- > Use of recycled wood and dedicated recycling area for collection and storage of recyclables



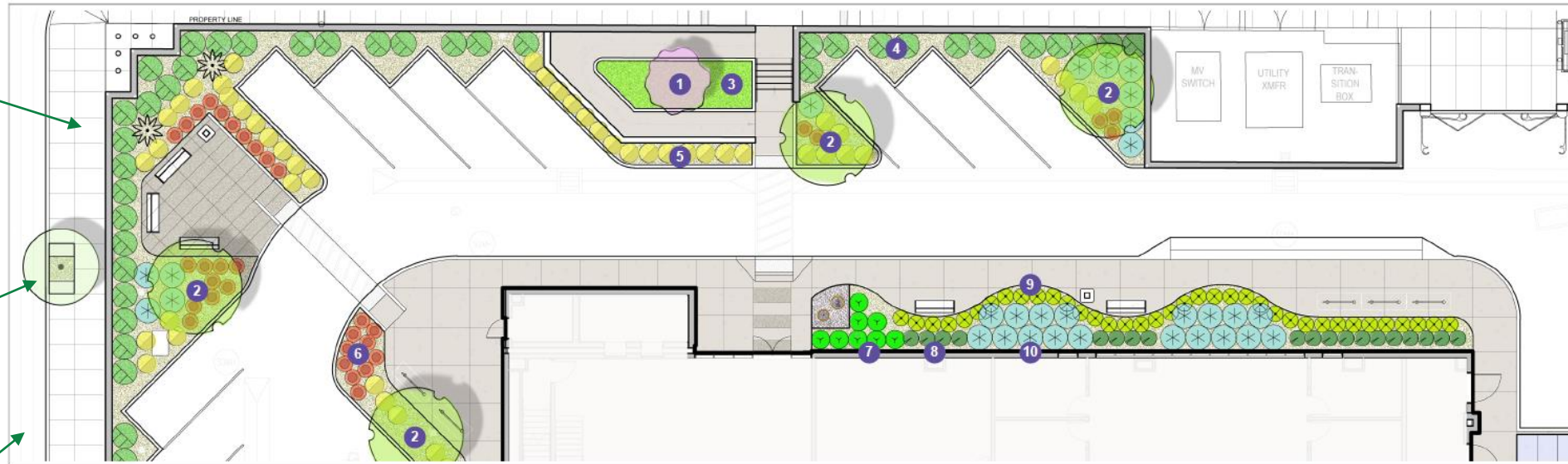
Landscape and Streetscape Overview

Proposed 9.5-foot-wide sidewalk with pedestrian lights

Center Street

5 new street trees ("London Plane")

New Bike Lane



1 Merlot redbud (15-20 ft tall x wide, blooms in spring)
Cercis canadensis 'Merlot'



2 Desert museum palo verde (20-25 ft tall x wide, blooms spring & sometimes summer)
Parkinsonia x 'Desert Museum'



3 European gray sedge
Carex divisa



4 Coral glow texas yucca (along fence)
Hesperaloe parviflora 'Coral Glow'



6 Coral aloe
Aloe striata



7 Cape rush
Chondropetalum tectorum



8 White-striped sansevieria
Sansevieria 'Bartel's Sensation'



9 Aloe vera



10 Variegated fox-tail agave
Agave attenuata 'Variegata'

NORTH SIDE
PLANTING PLAN
SCALE: 1/8" = 1' - 0"
0 4 8 16 ft



Draft: Subject to Change

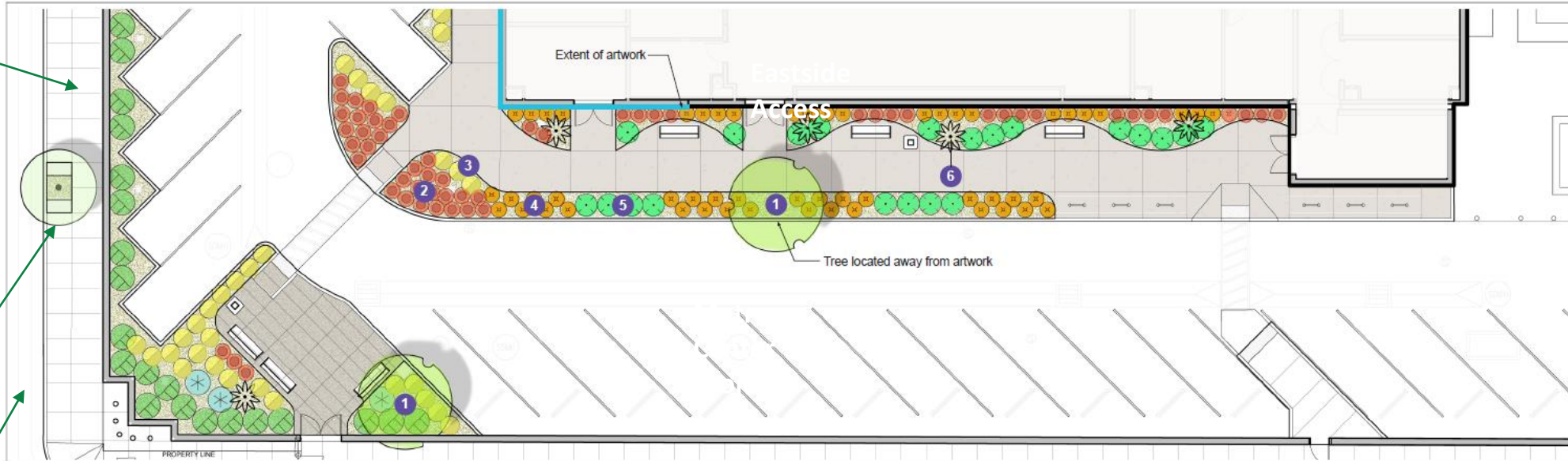
Landscape and Streetscape Overview

Proposed 9.5-foot-wide sidewalk with pedestrian lights

Center Street

5 new street trees ("London Plane")

New Bike Lane



1 Desert museum palo verde (20-25 ft tall x wide, blooms spring & sometimes summer)
Parkinsonia x 'Desert Museum'



2 Coral aloe
Aloe striata



3 Orange-stalked bulbine
Bulbine frutescens 'Orange'



4 Safari aloe
Aloe 'Andora'



5 Blue glow agave
Agave 'Blue Glow'



6 Tree aloe
Aloe barberae



SOUTH SIDE PLANTING PLAN

SCALE: 1/8" = 1' - 0"
0 4 8 16 ft



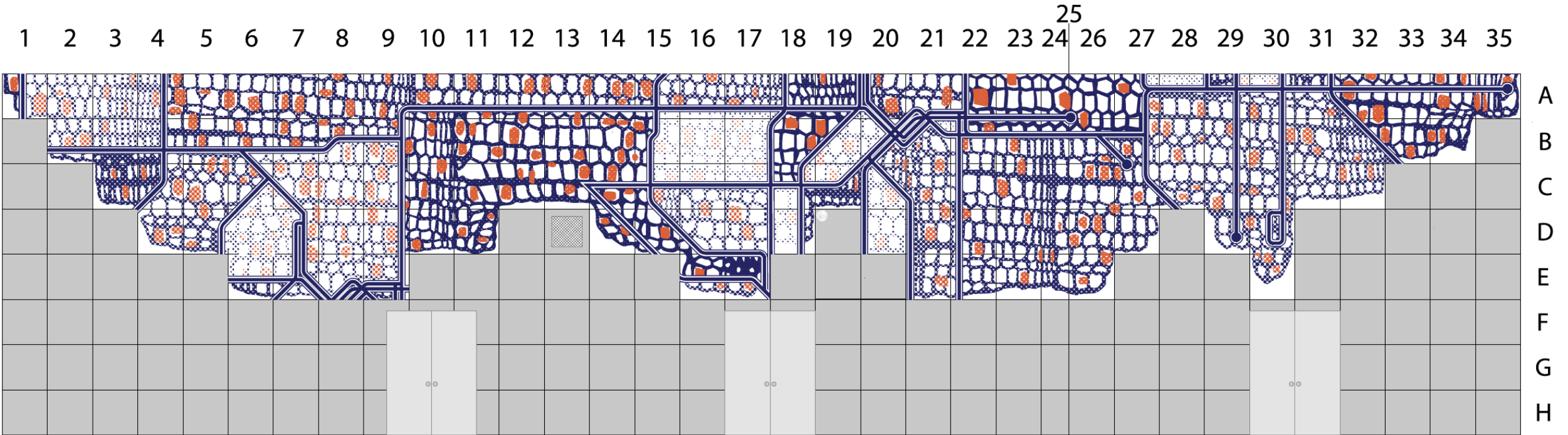
Draft: Subject to Change

Metro Center Project: Exterior Renderings

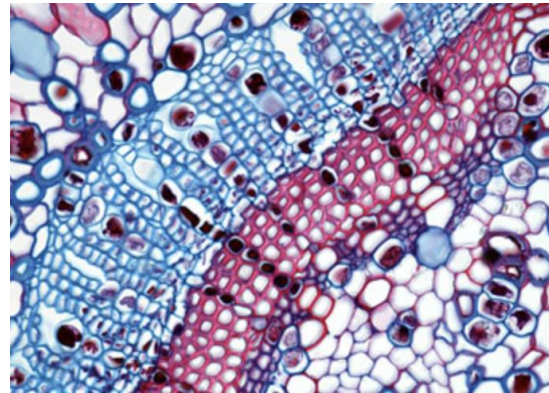
Draft – Subject to Change



Building Artwork: Design Renderings



Preliminary artwork rendering for MCP



Temporary Construction Banner Artwork: Installation



Installation in progress of artwork banners "we bear the fruit of our ancestors" by Susu Attar and Kuniharu Yoshida with JACCC and Metro Art



Temporary Construction Banner Artwork: Installation



Installation in progress of artwork banners "we bear the fruit of our ancestors"
by Susu Attar and Kuniharu Yoshida with JACCC and Metro Art





Center St

Construction Progress To Date

- Completed concrete pour of building foundation in August
- Installation of temporary construction banner ongoing
- Sidewalk closed on east sidewalk of Center Street between Jackson St and Ducommun St

Stay Connected



213.922.1111



centrallaprojects@metro.net



www.metro.net/centerproject



Questions?

Next stop: improving rail service.

DIVISION 20 PORTAL WIDENING AND TURNBACK FACILITY



Metro

Construction Update
September 22, 2022

Meet the Team

Community Relations

- > **Marlon Walker**, Manager
- > **Ned Racine**, Principal Community Relations Officer
- > **Katrice Candler**, New Media Officer
- > **Matt Gallagher, PE** , Project Manager

Contractor

- > **Joanna Amador-Dempsey**, Construction Communications Coordinator



WALER & STRUTS

COMMERCIAL ST

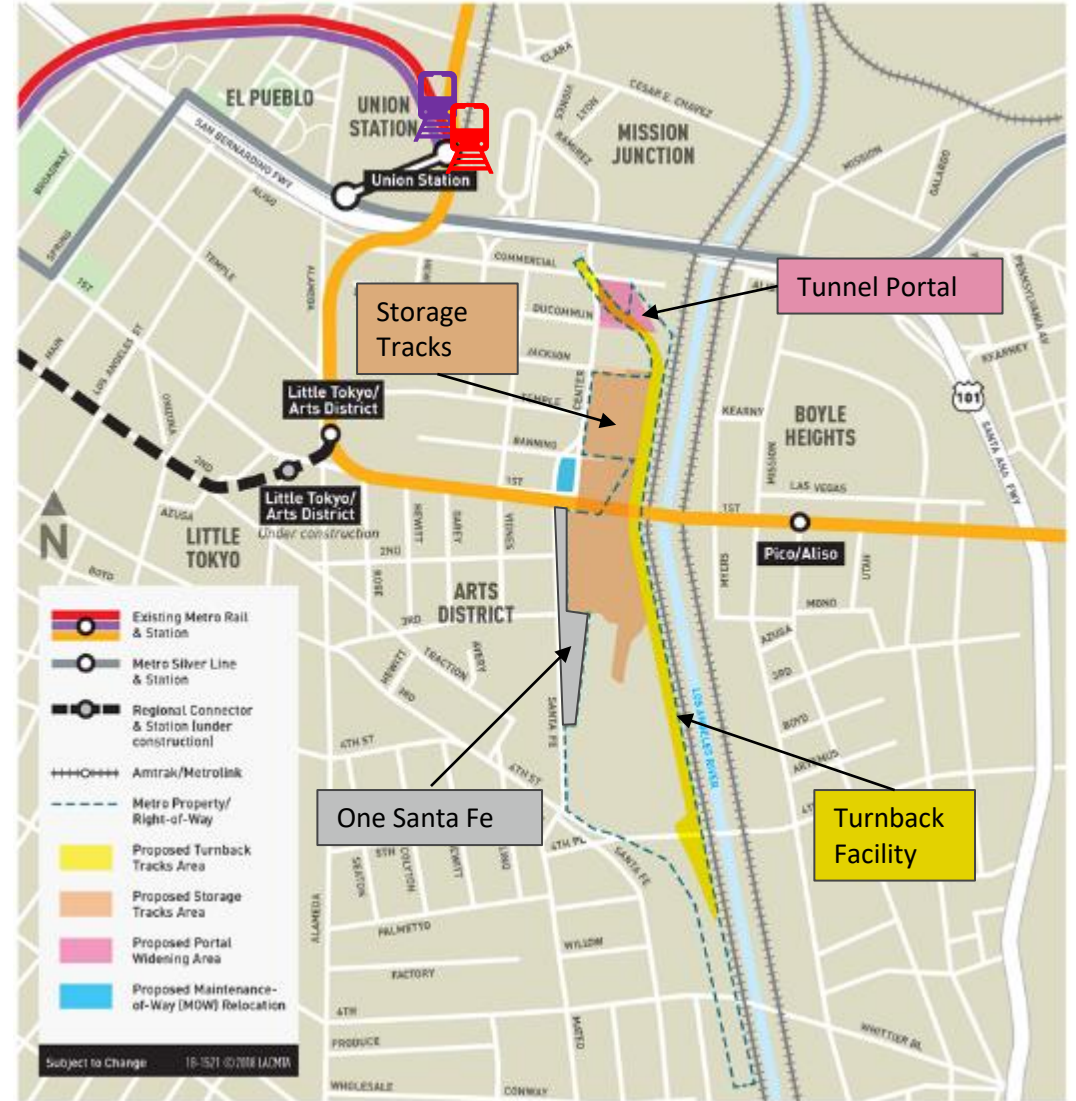
LifeStorage

NHDDBB

EL PATO SALSA

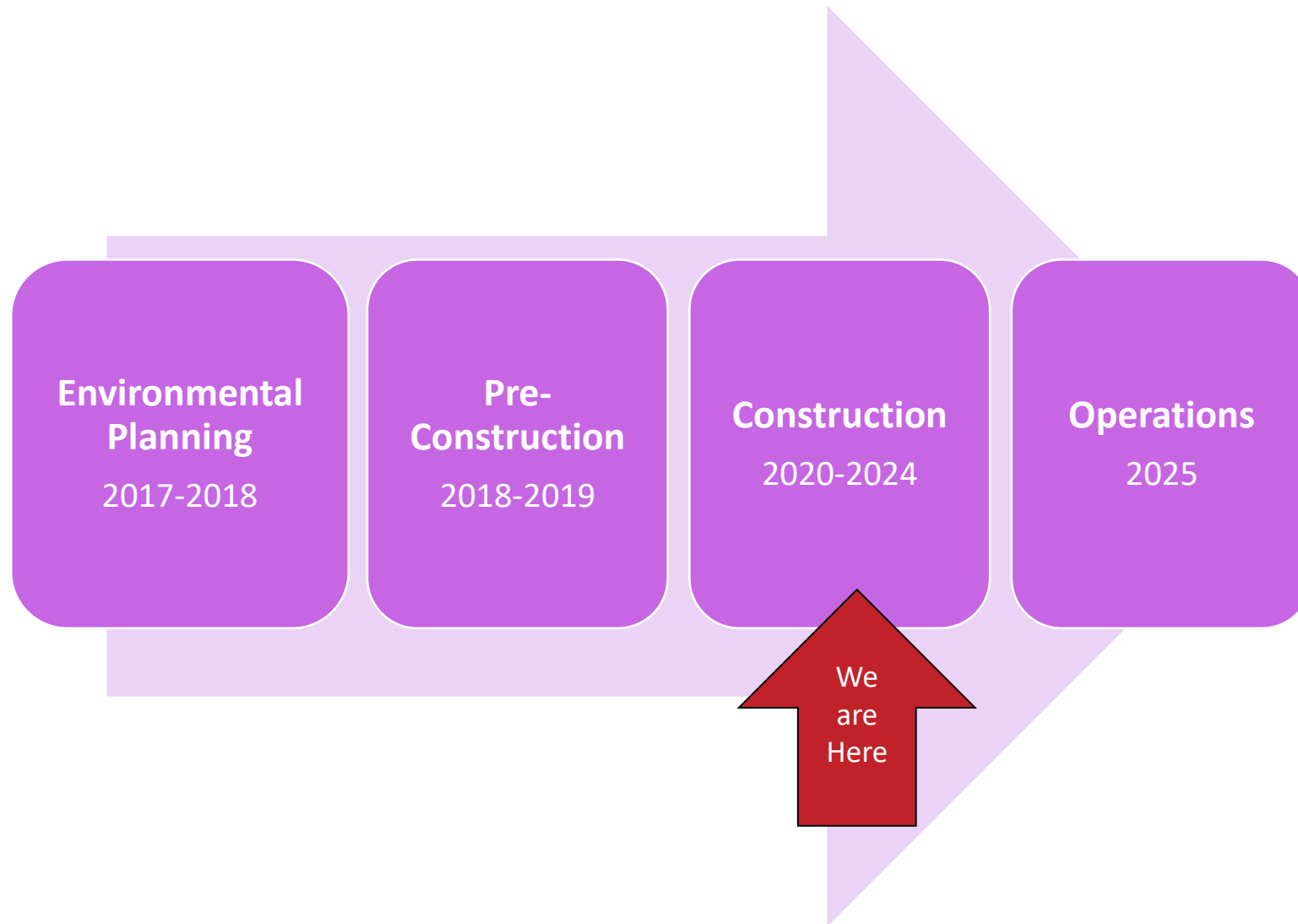
Project Overview

- Improvements to Metro's Division 20 Rail Yard will provide faster and more frequent service on the Metro Red and Purple (B and D) Lines
- Improvements include
 - Widening of heavy rail portal
 - New turnback facility
 - Expansion, reconfiguration of rail storage tracks



Exact location of turnback tracks and storage tracks to be determined.

Project Timeline



Current Work— North Yard

Adding and moving utilities supports additional tracks for more rail car storage

> Examples of utilities:

- Domestic water line under Banning St
- Fire water lines
- Lighting duct banks
- Main storm drain
- Underdrain to assist with water runoff
- Installation of train tracks



Access roads and drains have been added to the north yard. Rail installation may begin this week.

Current work: North Yard



Workers continue installing the storm drain along Center St near Commercial St.

Current Work: Portal Area

Portal Widening

Once the portal is expanded from two to four tracks, the turnaround time for subway cars from the rail yard to Union Station will shrink.



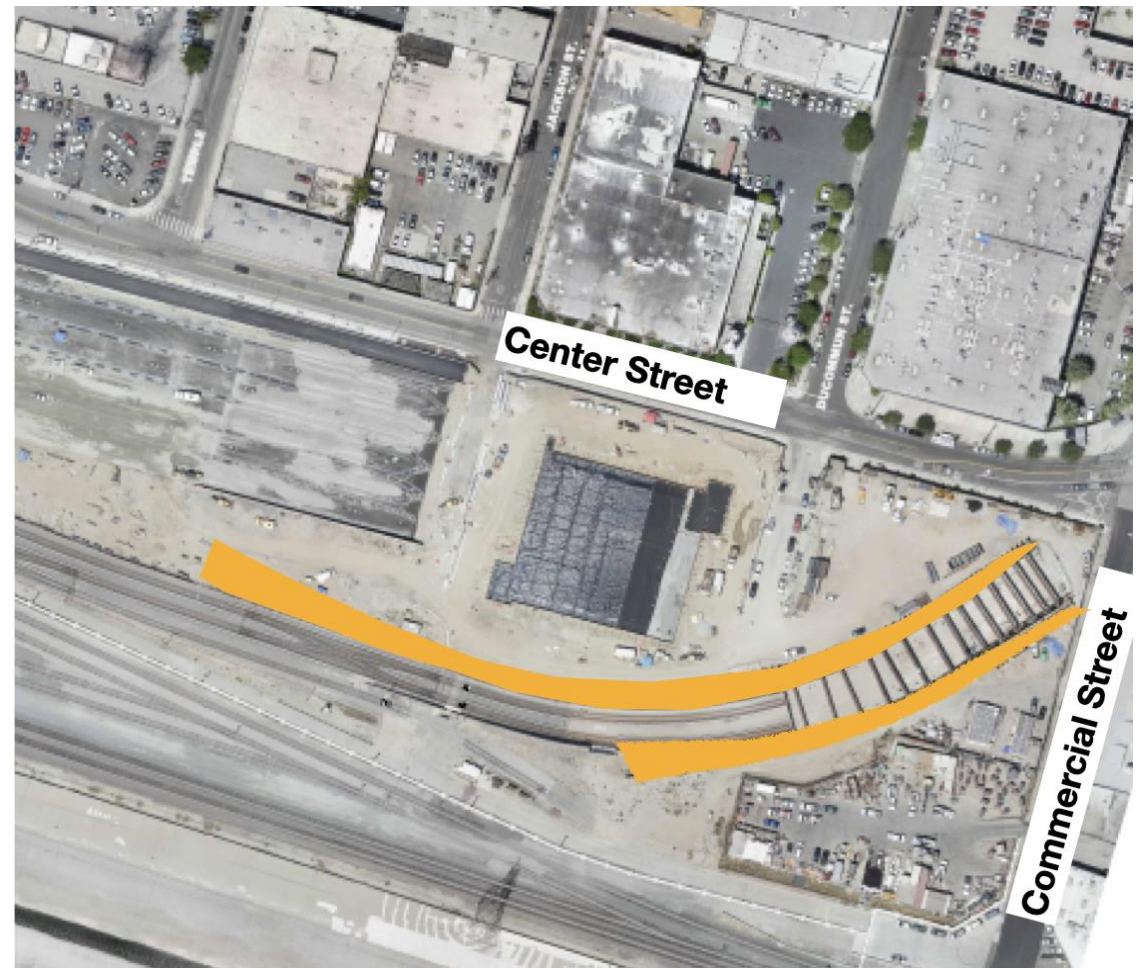
The highlighted concrete walls will soon be demolished. Once these walls are removed, two additional tracks will be added doubling the rail lines to the storage yards.

Current Work: Portal Area

Before Construction



Current Area



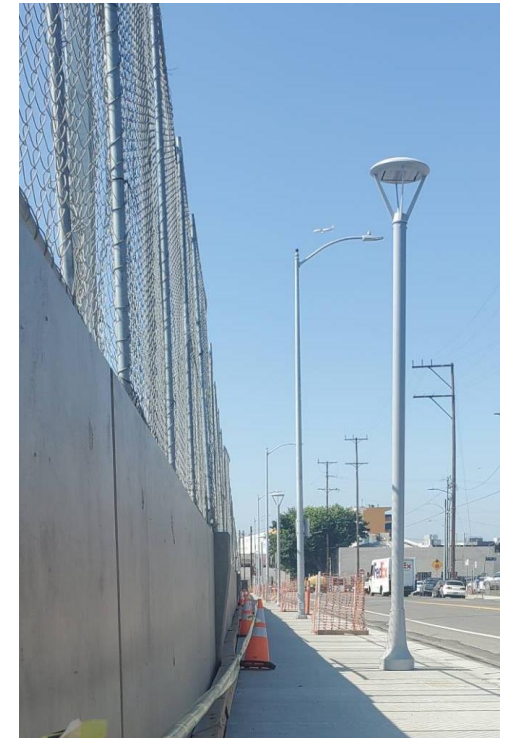
The orange lines indicate where the portal will be widened.

Current Work: Center St

- Eleven light poles were installed along the east side of Center St.
- Work continues along east Center St to install utilities, permanent fence, sprinkler system, and planter wells.
- East sidewalk will remain closed until workers installation in the north yard.
- Construction on the east sidewalk (right photo) has been completed.



Permanent fence



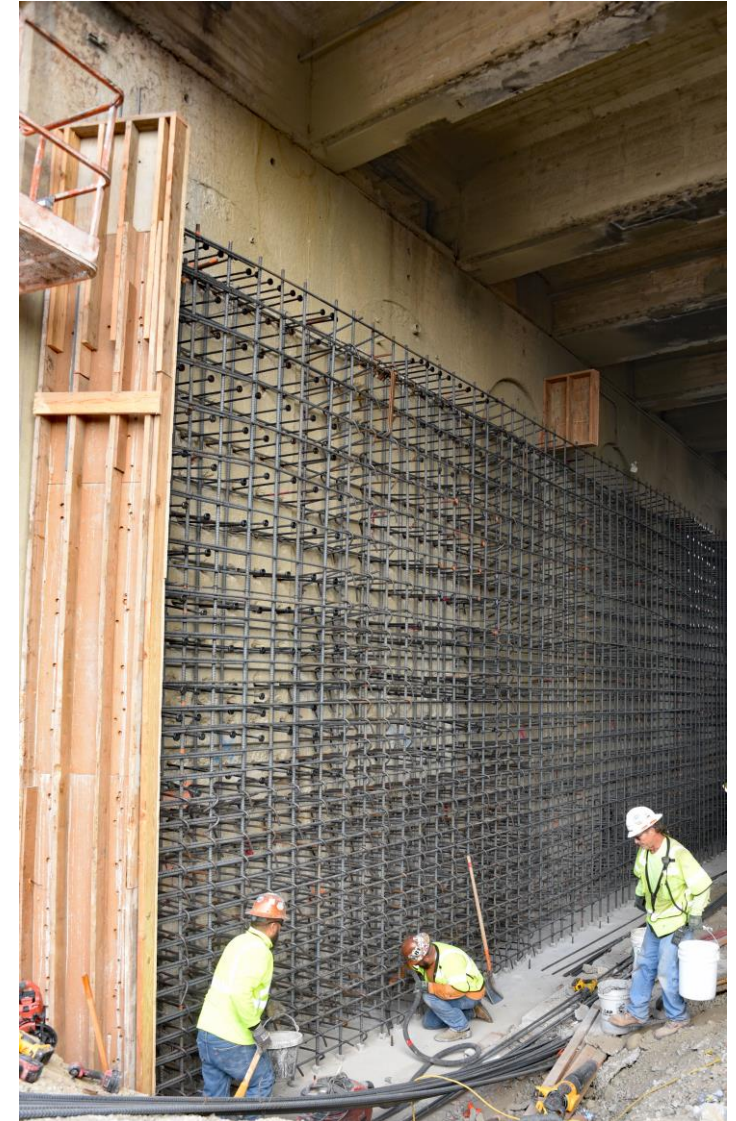
Current Work: 1st Street Bridge

1st Street Bridge Modifications

These modifications (continuing through 2022) provide more structural support, allowing bents to be removed, enabling more tracks to run under the bridge.



Falsework around curing concrete will support removal of bent 13 (above). Rebar constructed to prepare adding a wall to support the girders underneath the bridge (right).



Current Work: 1st Street Bridge

Bent 16 has been removed, allowing additional rails and new storage areas.



Bent 16 demolition



Bent 16 demolition continues.

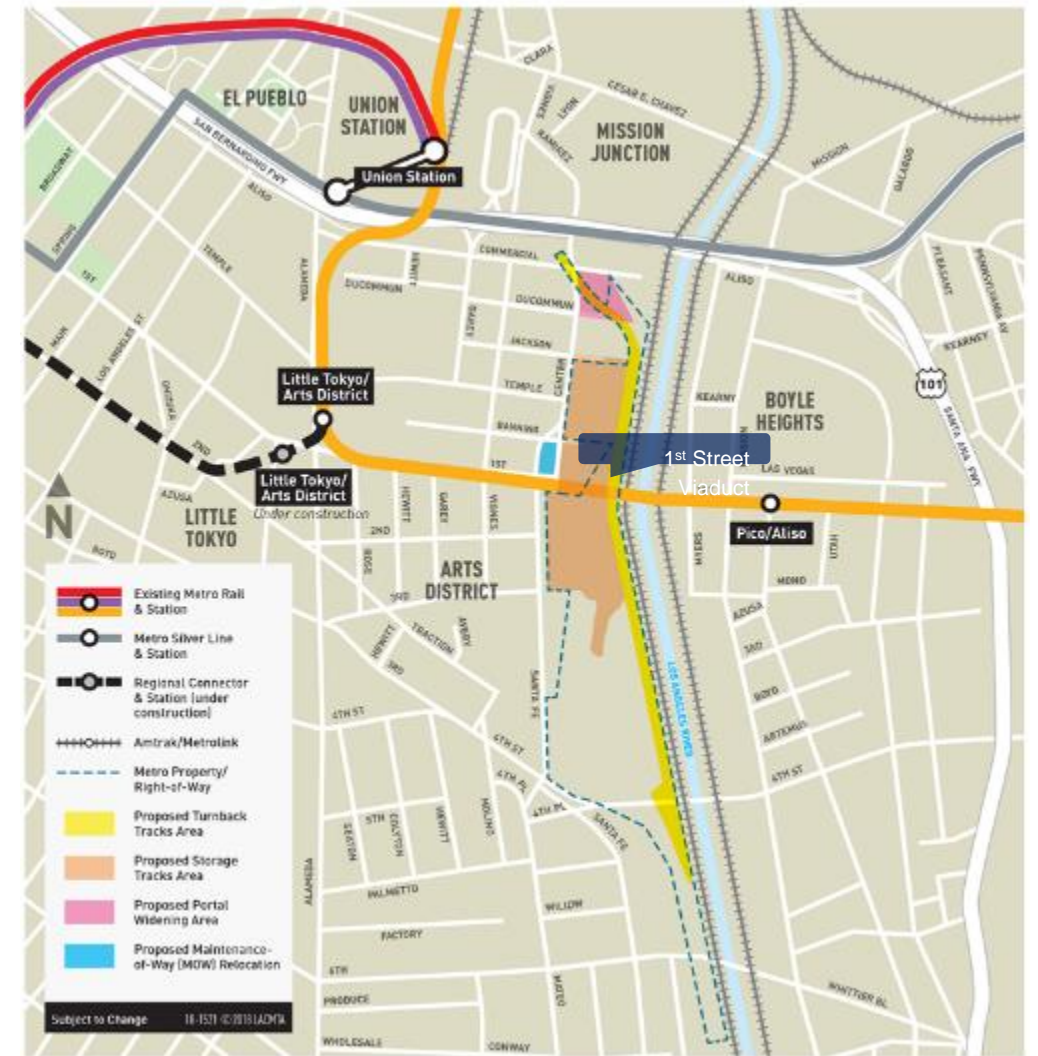


Bent removal complete. Overhead girders were joined to support the bridge before of Bent 16.

Upcoming Work

**Work is subject to change*

- Begin dewatering at the portal
- Continue with structural improvements to prepare for the demolition of Bent 13 on 1st Street Bridge.
- Construct portal foundation and walls
- Install track
- Excavation and demolition in the south yard to install additional utilities and communication systems to support the new storage areas



Exact location of turnback tracks and storage tracks to be determined.

Construction Mitigations

Best practices on the Division 20 construction site

- Equipment and staging areas shall be located away from noise-sensitive receivers, and noise barriers should be used when possible.
- Minimize high-impact devices such as jackhammers and hoe rams.
- Utilize lower impact devices such as concrete crushers and pavement saws.
- Refrain from idling equipment.
- Use frequent watering to reduce dust.



Contractor team supporting the backfill operation with dust mitigation.

What's Next

- > On the east side of Center Street from Jackson Street to Banning Street, the Portal Widening Project will provide:
 - Street lighting
 - Pedestrian lighting
 - Tree wells
 - Vines
 - The Arts District reviewed these streetscape elements

- > The Portal Widening Project will provide a 10-foot-wide sidewalk on the west side of Center St from East Temple St to Jackson St and will provide an 8-foot-wide sidewalk on the east side from Jackson St to Banning St

Stay Connected



213.922.6934



div20portalwidening@metro.net



www.metro.net/divison20

Questions?

Central Los Angeles Projects: Next Meeting

- > Next Meeting: November 17, 2022
- > Let us know your thoughts
- > [Survey](#)



213-922-1111



Centrallaprojects@metro.net

