

# Welcome!

*We will begin in a few moments.*

Central Los Angeles

November 2022

# Housekeeping

Today's meeting is being recorded.



Attendee cameras are turned off and microphones are muted.



During the meeting, comments can be submitted using the Q&A icon.



For technical support, call or text 213.276.6008

**THANK YOU**

# Welcome and Agenda

---

**Thank you for joining us!**

---

Metro Announcements: Katrice Candler, Matthew Marquez and Wendy Cardona

---

Regional Connector Transit Project: Wendy Cardona and Lorena Hernandez

---

East Side Access Improvement Project: Katrice Candler

---

Center St Project: Katrice Candler and Mayen Alcantara

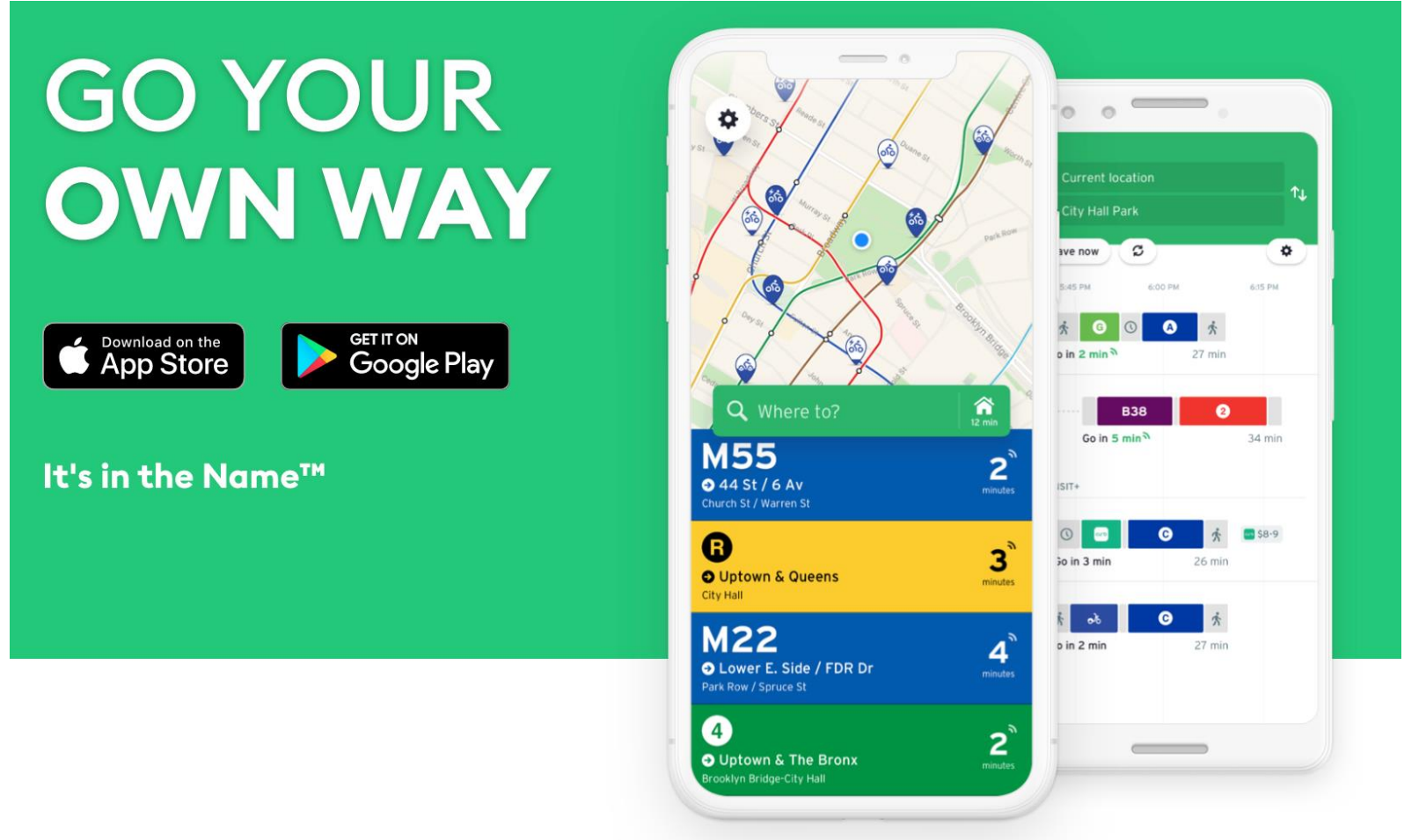
---

Division 20: Ned Racine

# Agency Announcements

## Transit App:

- Bus and rail schedule information





Easy and anonymous way to connect with Metro Security anytime



## Free transit for students with GoPass!

Students at participating K-12 schools and community colleges ride for free on Metro and other transit agencies.

To find out if your district is participating, contact your school or visit [metro.net/gopass](https://metro.net/gopass).



**Metro**

# Tap into savings with the LIFE Program.

We've made it easier to apply to the program, which offers deep discounts for low-income riders.

To see if you qualify and apply online, visit *[metro.net/life](https://metro.net/life)*.



**Metro**<sup>®</sup>

**SIGN UP AND GET 90 DAYS OF FREE RIDES.**

# Let's Ride Safely Together

---

Keeping riders safe is our number one priority and we're committed to providing you with a great experience on Metro. That's why we've launched a plan that reimagines the way we approach public safety, to ensure all our riders feel safe, comfortable, and welcome on our system.

Check out ['Let's Ride Safely Together'](#) to learn how we're improving security, cleanliness, and customer care on our buses and trains.



# Discounted Fares/LIFE Program

## 90 Days Free Fares for New LIFE Riders

### Discounted Prices (Buy a Pass, Save Half)

1-Day, 7-Day and 30-Day passes have been discounted a whopping 50 percent through December 31, 2022.

#### •Pass fares are:

- \$3.50 for a Day Pass
- \$12.50 for a Weekly Pass
- \$50 for a 30-Day Pass
- Discounted pass fares are now available for purchase at Metro TAP vending machines, Metro Customer Centers, TAP retail vendors throughout L.A. County and on [taptogo.net](http://taptogo.net).

### Low Income Fare Is Easy (LIFE) Program

- New LIFE riders will get 90 days of free rides (Promotion runs through December 31, 2022)
- \$26 for a 30-day pass (regular \$76)
- \$6.50 for a 7-day pass (regular \$19.50)
- To sign up for the LIFE program visit [metro.net/life](http://metro.net/life)



**Get 90 days of free rides.**

A little help can go a long way. So we've made it easier to enroll in Metro's LIFE Program. Sign up now and get 90 days of free rides. Visit [metro.net/life](http://metro.net/life) to get started.

**M Metro**

Fare collection has resumed. When riding, please have your fare ready.

# LA River Path Design Survey

## Design Survey Deadline Extended to November 18, 2022

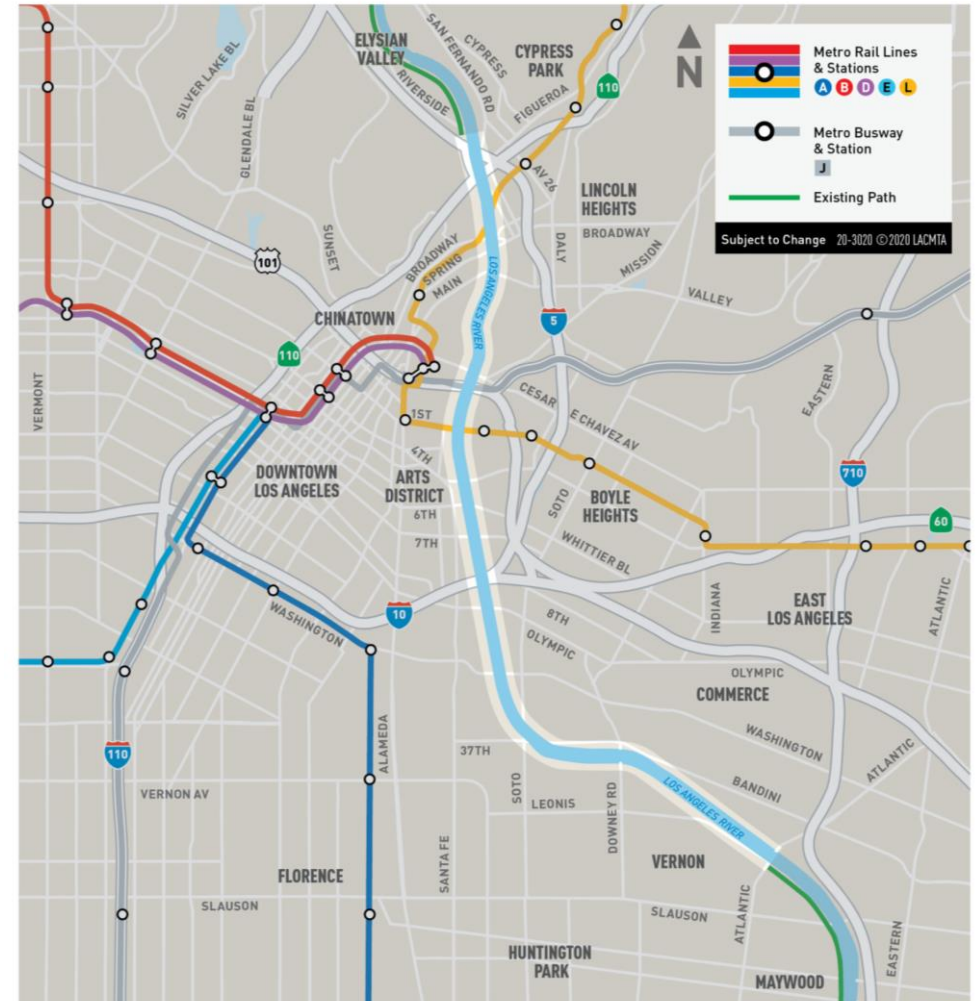
Metro is making it easier to get around with an eight-mile shared-use bicycle and pedestrian path, suitable for all ages and abilities, along the LA River between Elysian Valley and the City of Maywood, through downtown Los Angeles and the City of Vernon.

This project will close the gap in the LA River Path, creating a safe, efficient active transportation travel option connecting the San Fernando Valley and Long Beach.

Take our survey and provide your feedback about:

- Lighting
- Wayfinding/Signage
- Railing Types
- Surface and Wall Treatments

To take part in the survey visit [yourlariverpath.com](https://yourlariverpath.com). By taking the survey, you will be entered into a drawing to win one of four \$25 Target gift cards. The design survey will remain open through **Friday, November 18, 2022.**



Questions: [lariverpath@metro.net](mailto:lariverpath@metro.net) or 213-418-3422  
For more information: [metro.net/projects/lariverpath/](https://metro.net/projects/lariverpath/)



**Metro**<sup>®</sup>

# Public Safety Advisory Committee (PSAC)

## Get involved, apply to be on Metro's Public Safety Advisory Committee!

Metro is seeking a diverse group of transit riders and stakeholders to participate on our Public Safety Advisory Committee.

### As a PSAC member you will:

- Provide valuable input to Metro to ensure our public safety priorities, policies, and procedures are informed by community feedback.
- Offer guidance and information from a rider perspective to identify public safety challenges and concerns.
- Advise on how to improve public safety and ensure a safe and dignified experience for all transit riders.
- Be part of a diverse group of community members with a wide range of backgrounds, experience, and knowledge to support an inclusive approach to public safety.
- Be compensated for your time.

**Apply Today!**

**Applications due by  
November 30, 2022**



For more information and to apply, please visit: [www.metro.net/riding/public-safety-advisory-committee](http://www.metro.net/riding/public-safety-advisory-committee)

An illustration of a transit station. In the foreground, a yellow and black train is stopped at a platform. The train has "Metro Rail" written on its side and a "Go Metro" sign above the door. A person is standing near the train door. To the left, a set of stairs leads up to a platform where several people are walking. In the background, a city skyline is visible under a yellow sky, with a building labeled "Rose Bowl".

# Next stop: the missing link.

REGIONAL CONNECTOR TRANSIT PROJECT

# Introductions

# Regional Connector Project Team

## **Project Management:**

- Mat Antonelli
- Huburt Kang
- Tung Vu

## **Regional Connector Constructors:**

- Ivan Yee
- Philip Mateo

## **Community Relations:**

- Olga Arroyo
- Lorena Hernandez
- Wendy Cardona
- Ginny Brideau

## **Art Program:**

- Mayen Alcantara
- Jennifer Lieu

# Community Leadership Council (CLC)

# CLC Members

## Little Tokyo/Arts District

- > Chris Aihara, Co-Chair  
Little Tokyo Community Council
- > Miguel Vargas, Co-Chair  
Arts District LA BID

## Historic Broadway

- > Vahn Babigian, Co-Chair  
Metropolitan News

## Grand Av Arts/Bunker Hill

- > Dave Thompson, Co-Chair  
Brookstone Properties

## Grand Av Arts/Bunker Hill

- > Jamie Fang, Co-Chair  
Promenade, Orchids.com

## Flower St/Financial District

- > Michael Shilstone, Co-Chair  
Central City Association
- > Tom Jung, Co-Chair  
Los Angeles Central Library

## At-large Members

- > Ron Lozano, Consultant
- > Joel Wynton, Stakeholder





# Project Overview

- > 1.9-mile underground light-rail system
- > Three underground stations
  - > Little Tokyo/Arts District (1st St/Central Av)
  - > Historic Broadway (2nd St/Broadway)
  - > Grand Av Arts/Bunker Hill (2nd Pl/Hope St)
- > 90,000 daily passengers expected
- > Slated to open for rail passenger service in Q1 2023

# Operational Plan

- > Board approved October 2020
- > Connect the L Line to the A and E Lines
- > One-seat ride between Azusa and Long Beach; East LA and Santa Monica



 Existing Metro Rail & Station  
 Regional Connector & Station (under construction)  
 Metro Silver Line & Station  
 Amtrak/Metrolink

Subject to Change 17-1328 ©2017 LACMTA



Blue continues along current Gold Line route to Azusa.

Gold continues along current Expo Line route to Santa Monica.

Blue continues along current route to Long Beach.

Gold continues along current route to East LA.

7th St/  
Metro Center

Grand Av Arts/  
Bunker Hill

Civic Center/  
Grand Park

Union Station

Historic  
Broadway

Pershing  
Square

Little Tokyo/  
Arts District

Existing station

LITTLE  
TOKYO

TOY DISTRICT

An architectural rendering of a modern transit station. The station features a prominent glass and metal structure with decorative panels. The panels are decorated with stylized, colorful patterns in shades of purple, blue, and orange, resembling traditional Japanese or Japanese-American motifs. The station is situated in an urban environment with palm trees and other greenery in the background. A 'Metro' logo is visible on a building to the left. People are shown walking around the station, and a bicycle is parked near the entrance. The overall scene is set during the day under a clear sky.

# Little Tokyo/Arts District Station

Artist: Clare Rojas

Location: Glass entry pavilion

An architectural rendering of a modern transit station. The central focus is a glass-enclosed pavilion with a white frame and black accents. To the left, a set of stairs leads up to a platform area. A large mural with the words 'THE PEOPLE UNITED NEVER DIVIDED' is visible on a wall in the background. The station is surrounded by a paved plaza with various people, including a person with a stroller and a person with a cane. There are trees and a street with cars visible on the right side. The overall style is clean and modern.

# Historic Broadway Station

Artist: Andrea Bowers  
Location: Glass entry pavilion




# Grand Av Arts/Bunker Hill Station

Artist: TBD

Location: Glass Entry Pavilion

# Project Update

# Project Look Ahead

Activity	Little Tokyo/Arts District	Historic Broadway	Grand Av Arts/Bunker Hill	Flower St/Financial District
<b>Construction</b> > Stations	Concludes Q1-2023			
<b>Civil Restoration</b> > Sidewalks, final paving & striping, tree planting, lighting, etc.	Q1-2023	Q1-2023	Q1-2023	Q1-2023
<b>L Line (Gold) service interruption</b>	Concludes Q1-2023	–	–	
<b>Testing</b>	Concludes Q1-2023			
<b>Revenue Operations</b>	Q1-2023			

# 2022 Project Milestones

1. Regional Connector system integration to the operational system of the E (Expo), A (Blue), and L (Gold) is over 50 percent complete
2. Street restoration nears completion
3. Station finishes are nearing completion



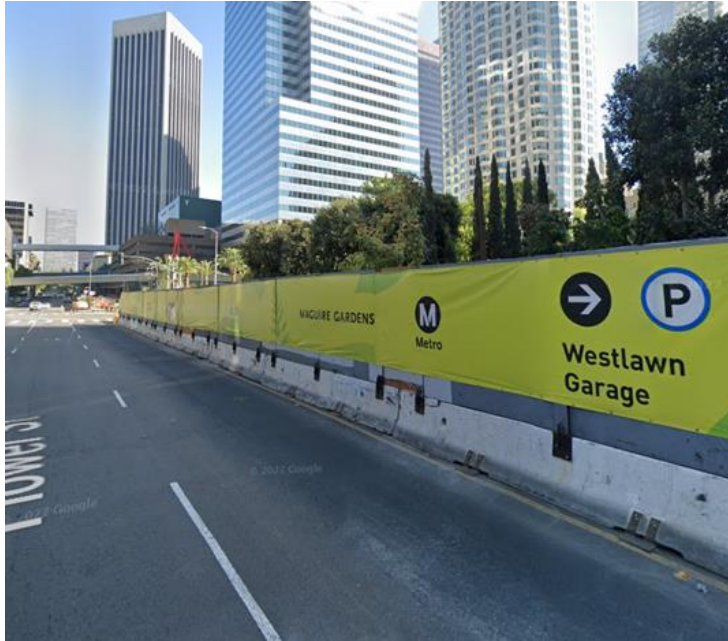
# 1. System Integration

- Regional Connector system integration to the operational system of the E (Expo), A (Blue), and L (Gold) is over 50 percent complete

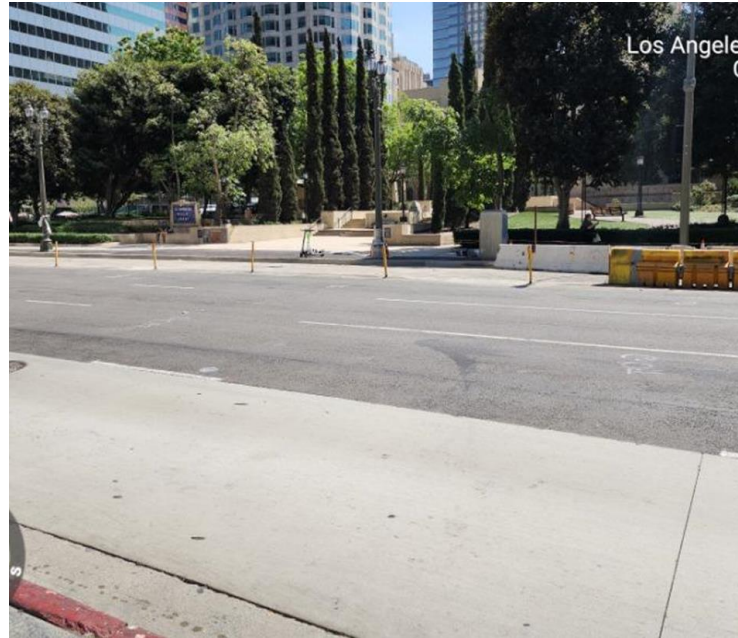


# 2. Street Restoration (Flower)

Before



January 2022



September 2022

After



November 2022

# 3. Station Finishes Nearing Completion



# End of the Year Activities

# End of Year Activities: Little Tokyo & Historic Broadway

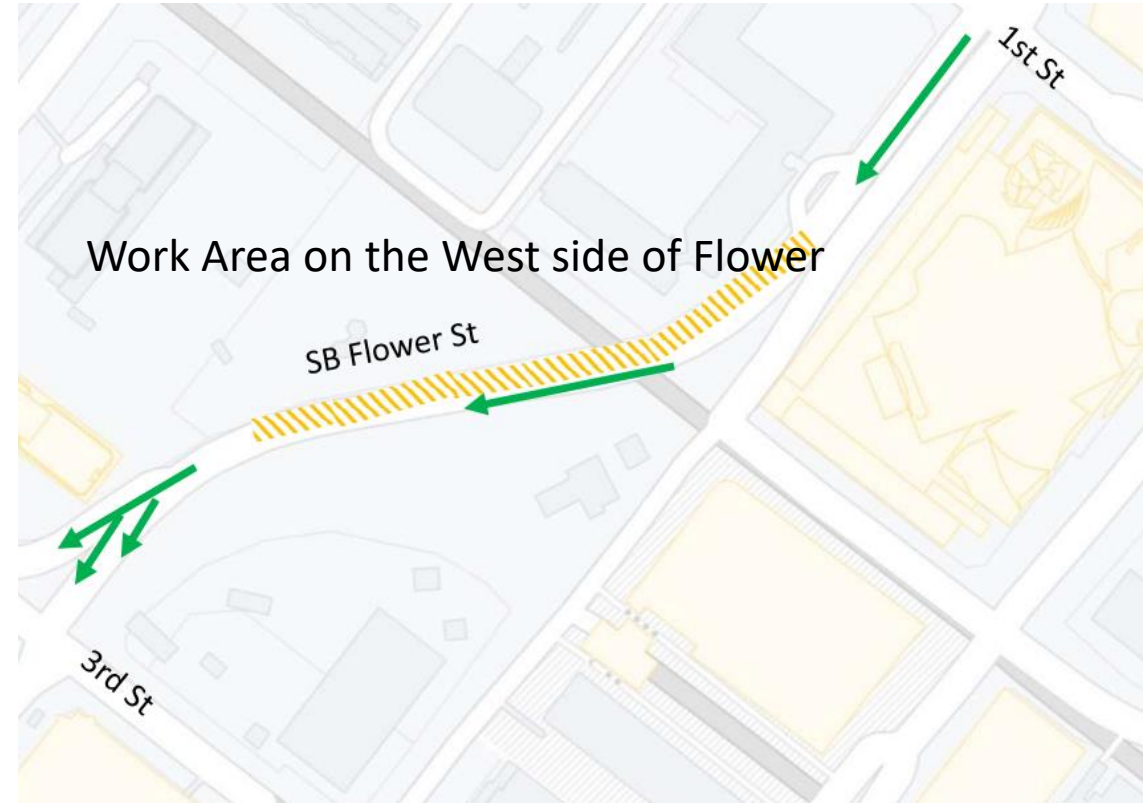
Location	Date	Access
<b>Little Tokyo</b>		
<p>Full Intersection Closure</p> <ul style="list-style-type: none"> <li>• 1st St/Alameda Intersection</li> <li>• EB 1st St, between Alameda St and Vignes St/Mission Rd</li> </ul>	<ul style="list-style-type: none"> <li>• Saturday, 11/19 at 7 am to Sunday, 11/20 at 7 pm</li> </ul>	<ul style="list-style-type: none"> <li>• Local access maintained.</li> <li>• Thru traffic use alternative routes: Temple St, 2nd St, Vignes St</li> </ul>
<b>Historic Broadway</b>		
<p>EB 2nd St Directional Closure</p> <ul style="list-style-type: none"> <li>• Between Broadway and Spring St</li> </ul>	<ul style="list-style-type: none"> <li>• Saturday, 11/19 from 7am to 4pm</li> </ul>	<ul style="list-style-type: none"> <li>• Local access maintained.</li> <li>• Thru traffic on 2nd St use alternative routes: Spring St, Broadway, Main St, 1st St, and 3rd St</li> </ul>
<p>Full Street Closures/Lane Reductions</p> <ul style="list-style-type: none"> <li>• 2nd St, Spring St to Broadway</li> <li>• Lane reductions on Spring St</li> </ul>	<ul style="list-style-type: none"> <li>• Friday, 12/2 from 9 am to Monday, 12/5 to 9 am</li> <li>• Saturday, 1/7, at 7 am to Sunday, 1/8</li> </ul>	<ul style="list-style-type: none"> <li>• Local access maintained.</li> <li>• Thru traffic on 2nd St use alternative routes: Spring St, Broadway, Main St, 1st St, and 3rd St</li> </ul>

# End of Year Activities: Southbound Flower Street Restoration

Phase 1: Nov 5 – Approx. Dec 9



Phase 2: Approx. Dec 10 – Week of Jan 9



- Thru traffic is maintained; work hours from 7am to 3:30pm
- Weekend only full street closure, Flower St between 1st St and 3rd St
- Proposed date: December 10, 2022

# 2023 Activities Look Ahead

# 2023 Milestones Project Wide

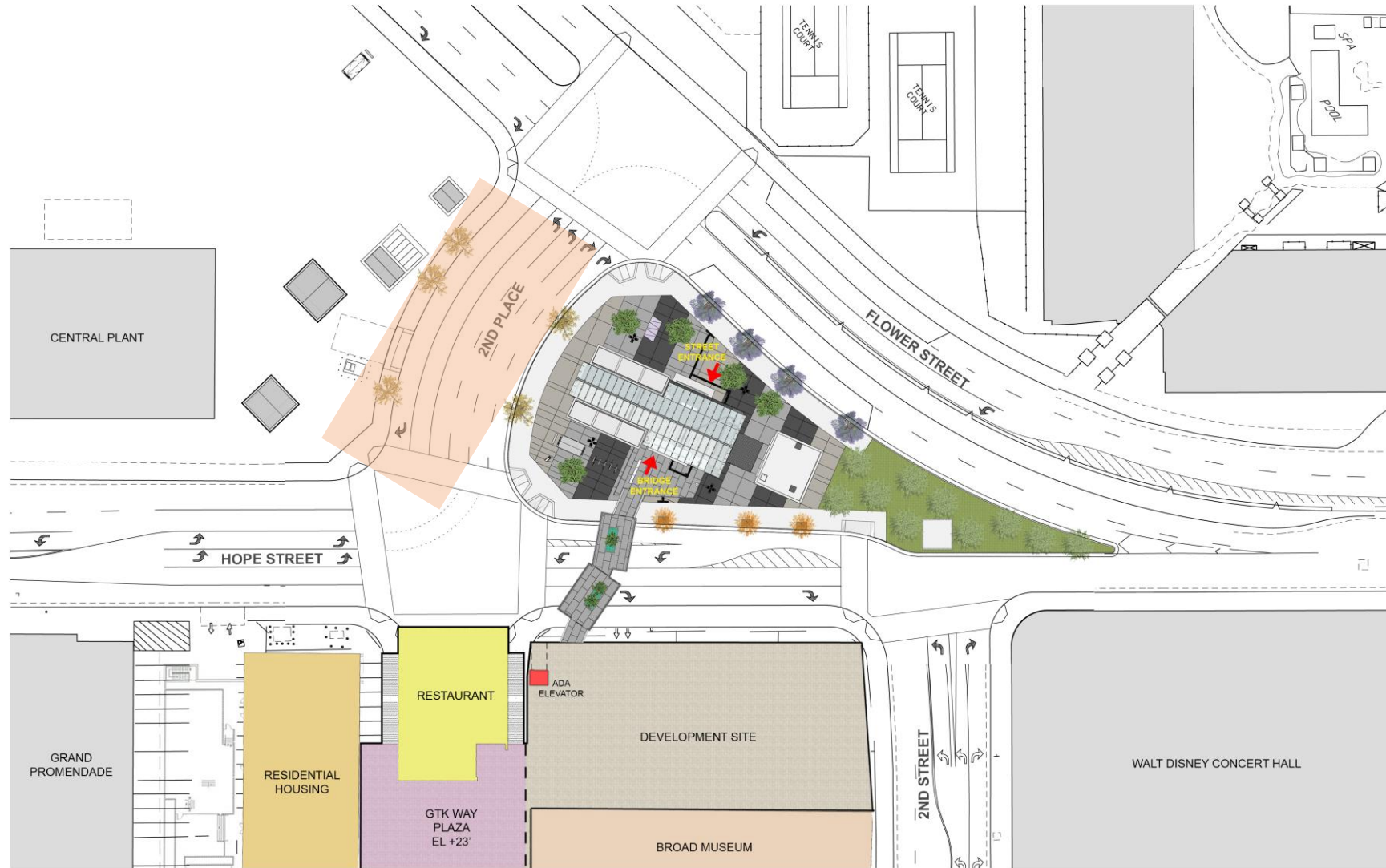
1. Complete street restoration and begin tree replacement program (Landscaping)
2. California Public Utilities Commission (CPUC) certification for revenue operations
3. Revenue operations



# 2023 Activities Look Ahead: Little Tokyo & Historic Broadway

Location	Date	Access
<b>Little Tokyo/Arts District</b>		
Full Intersection Closure <ul style="list-style-type: none"><li>• Temple St/Alameda St Intersection</li></ul>	<ul style="list-style-type: none"><li>• Early 2023</li></ul>	<ul style="list-style-type: none"><li>• Local access maintained.</li><li>• Thru traffic use alternative routes: SB Alameda, 2nd St, San Pedro St, Vignes St</li></ul>
Full Street Closure <ul style="list-style-type: none"><li>• Alameda St, from 1st St to Temple St</li></ul>	<ul style="list-style-type: none"><li>• Early 2023</li></ul>	<ul style="list-style-type: none"><li>• Local access maintained.</li><li>• Thru traffic use alternative routes: Temple St, 2nd St, Vignes St</li></ul>
<b>Historic Broadway</b>		
Full Street Closures <ul style="list-style-type: none"><li>• Broadway, 1st St to 3rd St</li></ul>	<ul style="list-style-type: none"><li>• Early 2023</li></ul>	<ul style="list-style-type: none"><li>• Local access maintained.</li><li>• Thru traffic on Broadway use alternative routes: Spring St, Main St, Hill St, 1st St, and 3rd St</li></ul>

# End of Year Activities: Grand Av Arts/ Bunker Hill Station



# Community Outreach and Engagement



Construction notices



Stakeholder briefings



Door-to-door distribution within ½ mile radius



Email notice distribution



Posting on Next Door



Postings on Facebook and Twitter



Waze map integration



Project website

# Stay Connected



213.922.7277



regionalconnector@metro.net



[www.metro.net/regionalconnector](http://www.metro.net/regionalconnector)

Questions?



# Eastside Access Improvements Project (TIGER Grant)

# Meet the Team

Kurt Turley,  
Construction  
Project Manager

Olga Arroyo,  
Community  
Relations  
Manager

Katrice Candler,  
Principal  
Community  
Relations Officer



# Project Overview

The Eastside Access Improvements will implement streetscape, pedestrian safety and bicycle access improvements within a ½mile radius around the future Metro Little Tokyo/Arts District Station at 1<sup>st</sup>/Central.



Walk/Bike Esplanade



Wayfinding Signage



Class II BikeLanes



Crosswalk Installation



Storm Parkways  
(Biowales)



Decorative Crosswalk  
Restoration



Street Trees



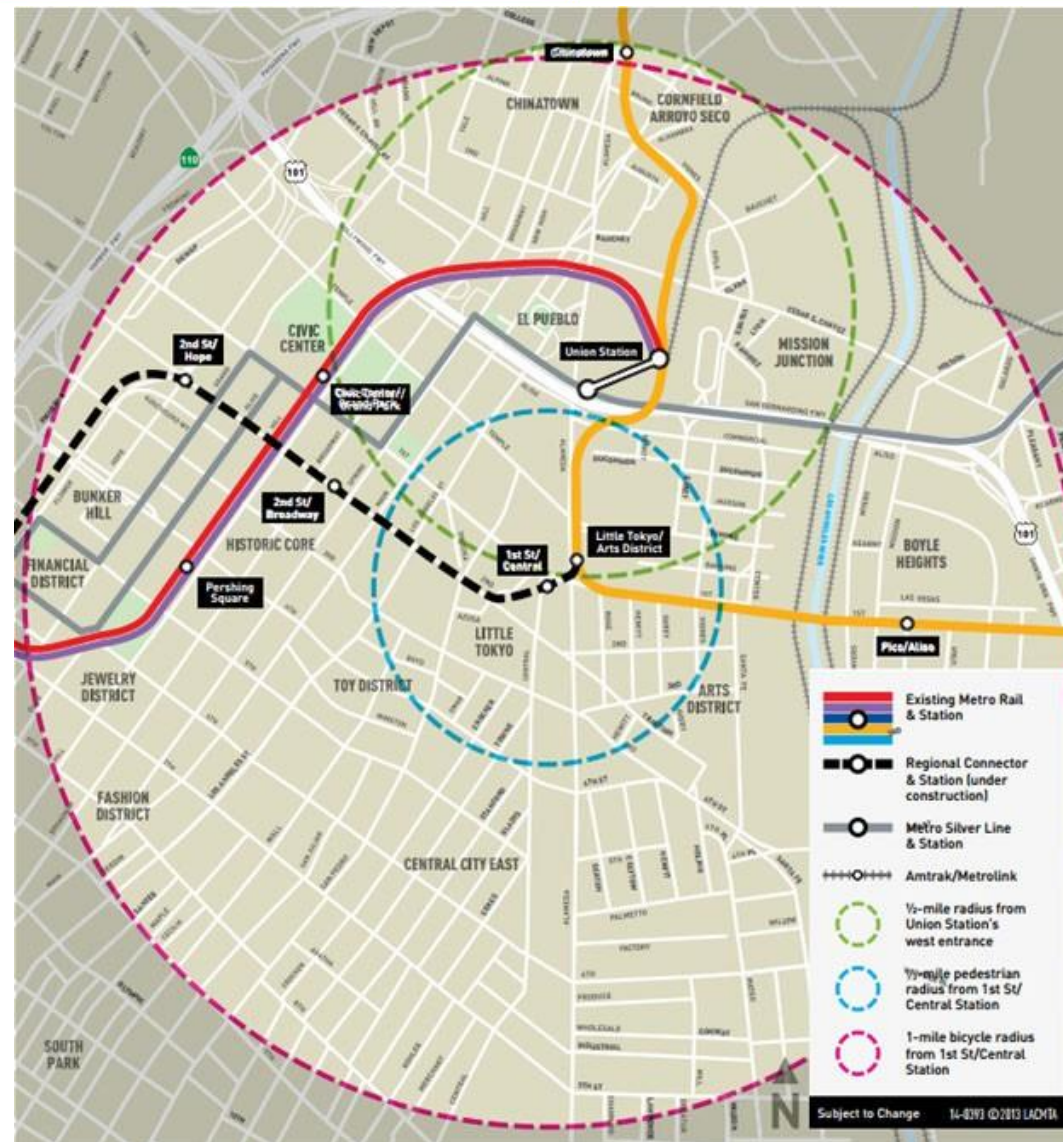
Street Furniture  
Restoration



Street Light LED  
Conversion



ADA CurbRamp  
Installation



# Project Timeline

March 18, 2021: Metro Board of Directors Approved Project

- > Budget 29.7 Million Investment

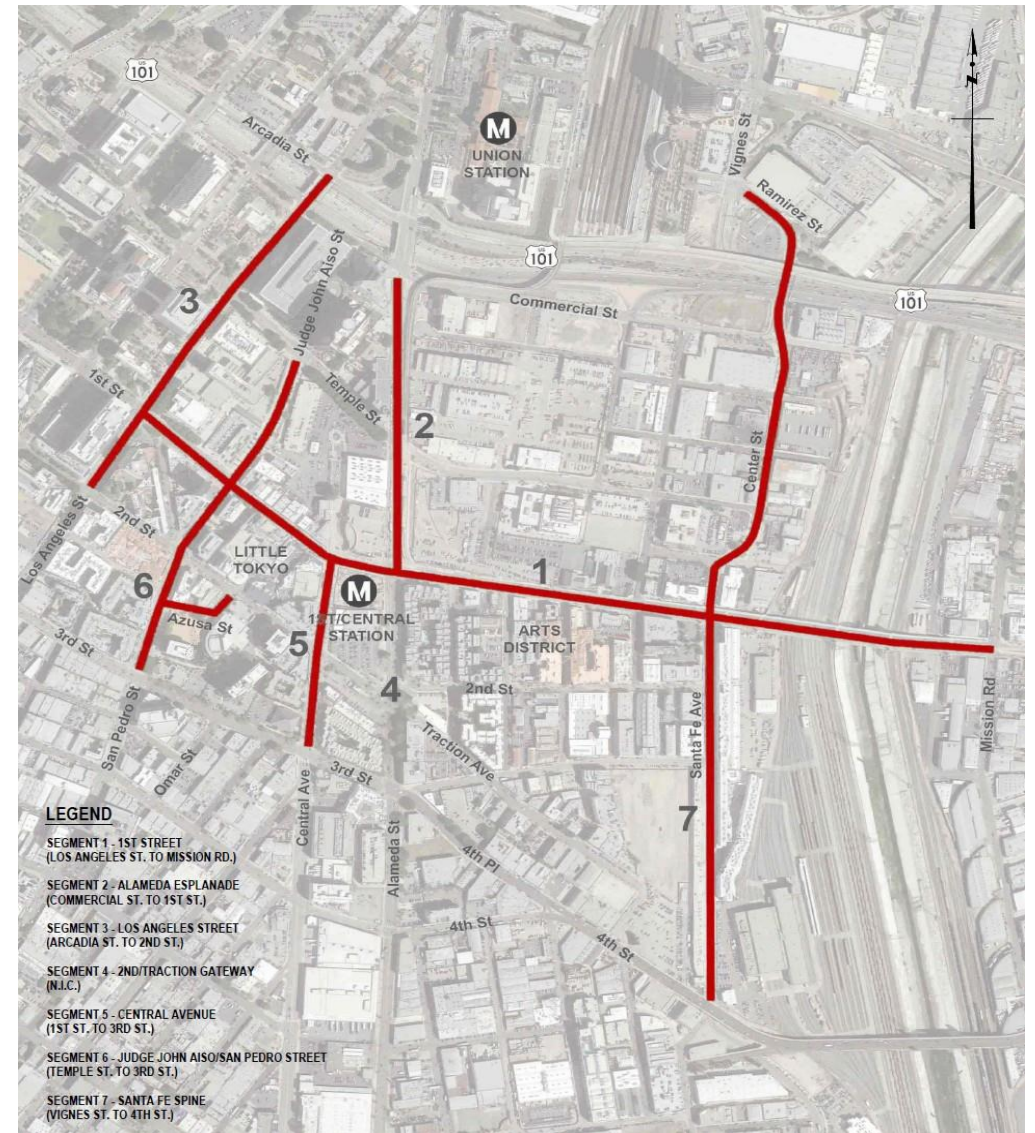
July 2021: Contractor notice to proceed.

- > Construction process initiated

Construction Duration

September 2021 to Q1 2023

*This includes completion of Alameda Esplanade*



# 2022 Project Accomplishments

- Street light installations
- Street light LED Conversions
- ADA Curb Ramp Installations
- Decorative Crosswalks
- Moon Bench Restoration
- Pedestrian signal light installations

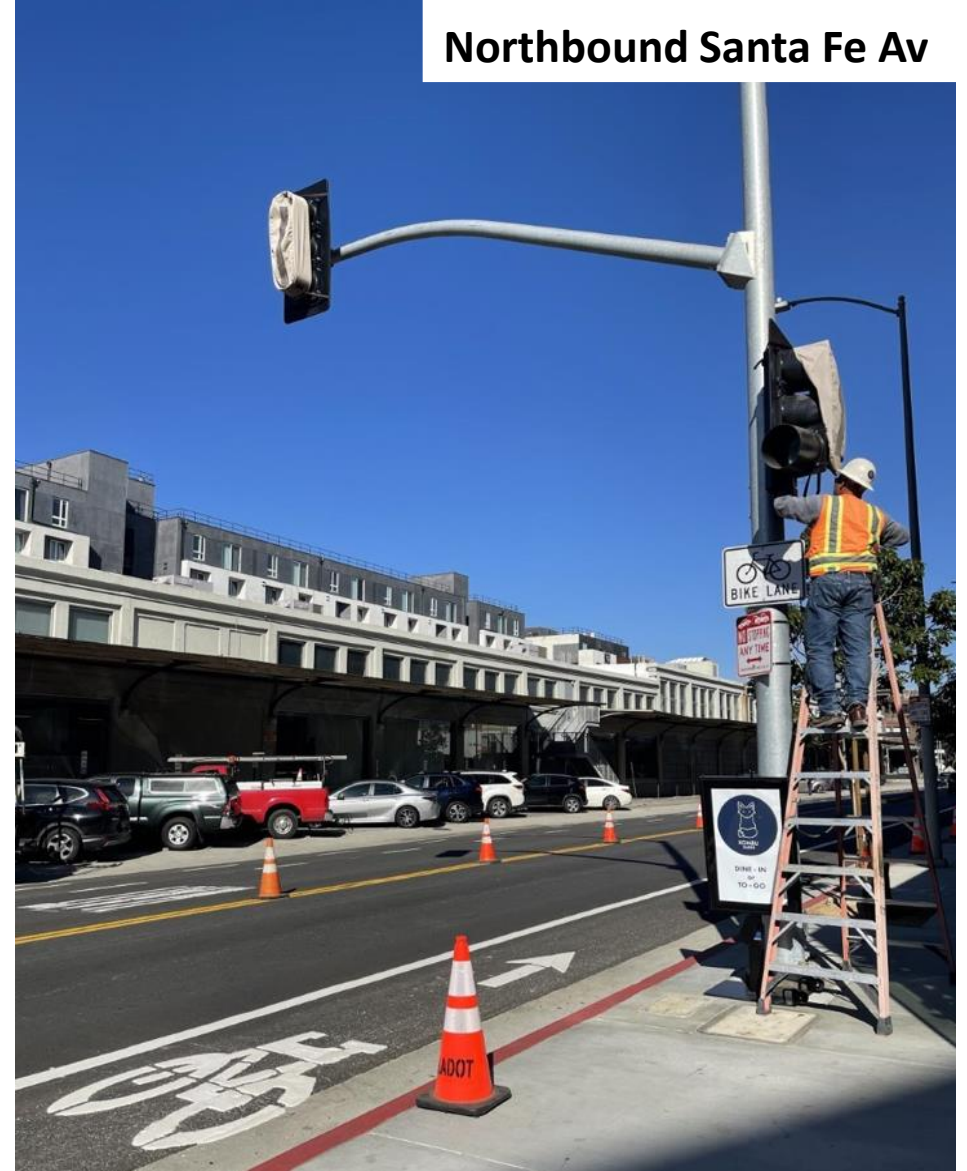
# Pedestrian Signal Light Activation

Mid-block Crossing on Santa Fe Av between 3rd and 4th St

Southbound Santa Fe Av



Northbound Santa Fe Av



# Pedestrian Signal Light Activation

Mid-block Crossing on Santa Fe Av between 3rd and 4th St



# Completed: Bike Lane Installations

Los Angeles St between 1<sup>st</sup> St and 2<sup>nd</sup> St

Northbound



Southbound

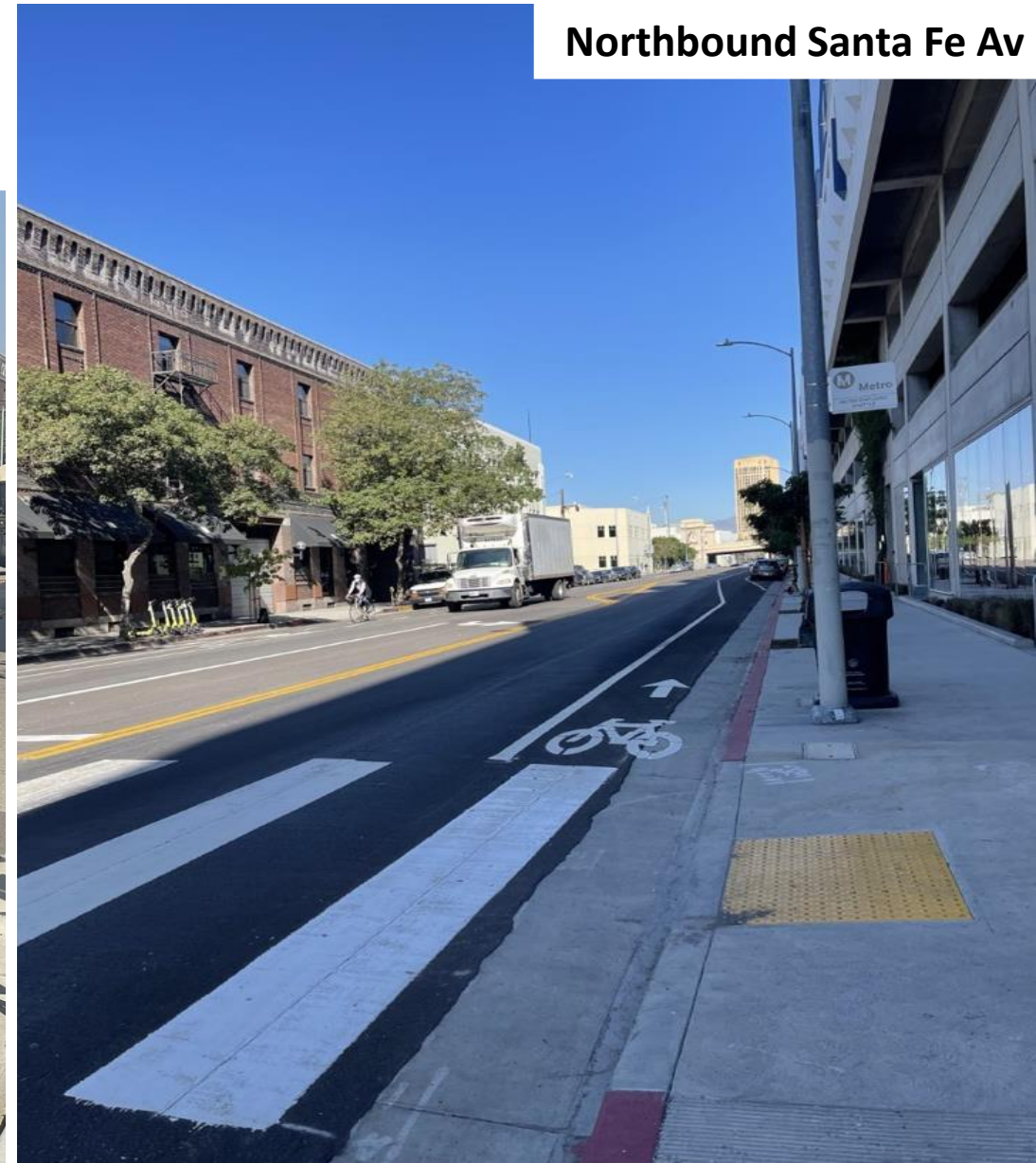


# Completed: Bike Lane Installations

Southbound Santa Fe Av



Northbound Santa Fe Av



# 2023 Look Ahead

- Alameda Esplanade Completion
- Wayfinding Signage Installation in Arts District and Little Tokyo

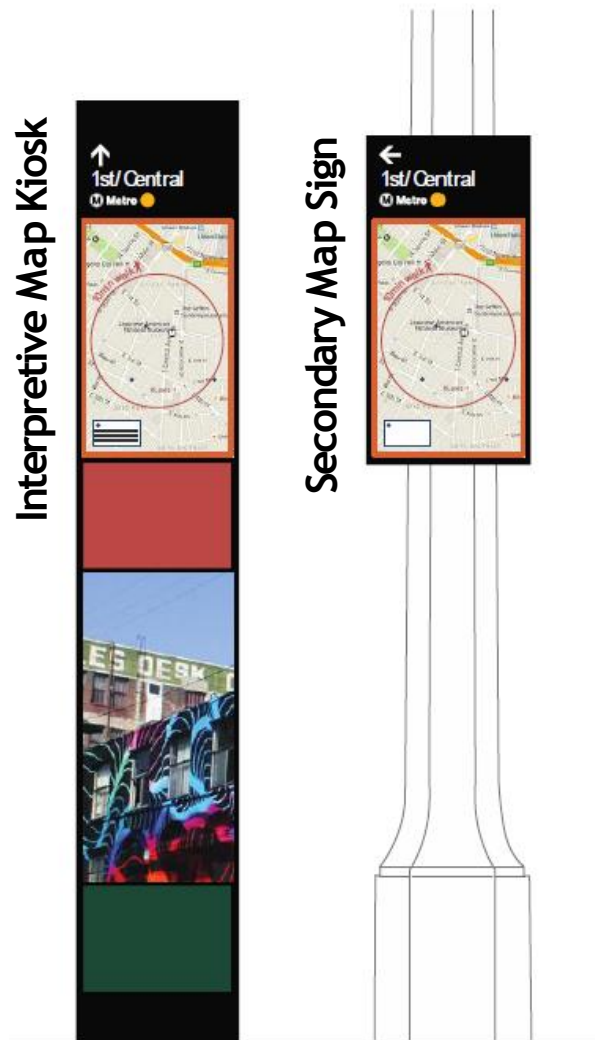


# Segment 2: Alameda Esplanade



Alameda St at 1st St, looking north

# Wayfinding Signage Design



*\*Graphic Design subject to community input*

## Interpretive Map Kiosks

- > 10 kiosks: (8) Little Tokyo (2) Arts District
- > Dimensions: 6'8" x 1'2" x 8"
- > Eight static graphic panels per kiosk, may vary per location
- > Installation on city sidewalk

## Secondary Map Signs

- > 23 signs: (18) Little Tokyo (5) Arts District
- > Dimensions: 2'4" x 1'2" Sign
- > Installation on existing street poles

## Signage Design

- > Panel content completed
- > Anti-graffiti coating



# Hashimoto Plaza/Azusa St

- Removal of three planters - two trees and monument removal (plaque/time capsule to be preserved)
- Removal of old Kiosk
- Repair pavers
- Paint wall and bollards on Azusa St
- Four tree installations throughout Little Tokyo

# Stay Connected



213.922.1111



centrallaprojects@metro.net



[www.metro.net/eastsideaccess](http://www.metro.net/eastsideaccess)



Questions?



Draft Illustration – Subject to Change



# Metro Center Project



# Meet the Team

## Program Management

### **Albert Soliz**

Project Executive, Metro

### **Robert Gummer**

DEO, System Security & Law  
Enforcement

### **Vincent Chio**

Project Manager, Metro

### **Sheida Roghani**

Project Manager, Construction Support

## Amoroso – Contractor

### **Nathan Berkey**

Project Manager, Amoroso

## Community Relations

### **Olga Arroyo**

Manager

### **Katrice Candler**

Principal Community Relations  
Officer

## Art & Design

### **Mayen Alcantara**

Sr. Manager

### **Allison Porterfield**

Sr. Specialist



# Metro Center Project Overview and Purpose

- > The Metro Center Project is an essential and secured facility that support the entire Metro Bus and Rail systems across 88 cities in LA County including expansions in Measure R and Measure M projects.
- > A 26,000-square-foot one-story building, with a second-story option to be built in the future, slated to open in 2023.



Draft – Subject to Change

# Sustainability LEED Gold Certification

- > For a building with over 200 personnel, only 53 parking spaces (including 10 with electric vehicle charging) are provided on-site as Metro intends to shuttle most of the employees between Union Station and Metro Center Project with service running every 13 minutes.
- > On-site Bike racks and new bike lane on Center Street will promote walkability
- > LED light fixtures and other energy efficiency measures
- > Drought tolerant and water efficient landscaping and use of ultra-low flow fixtures throughout the building
- > Low-impact development (LID) measures including an underground cistern for reuse of rainwater.
- > Use of recycled wood and dedicated recycling area for collection and storage of recyclables



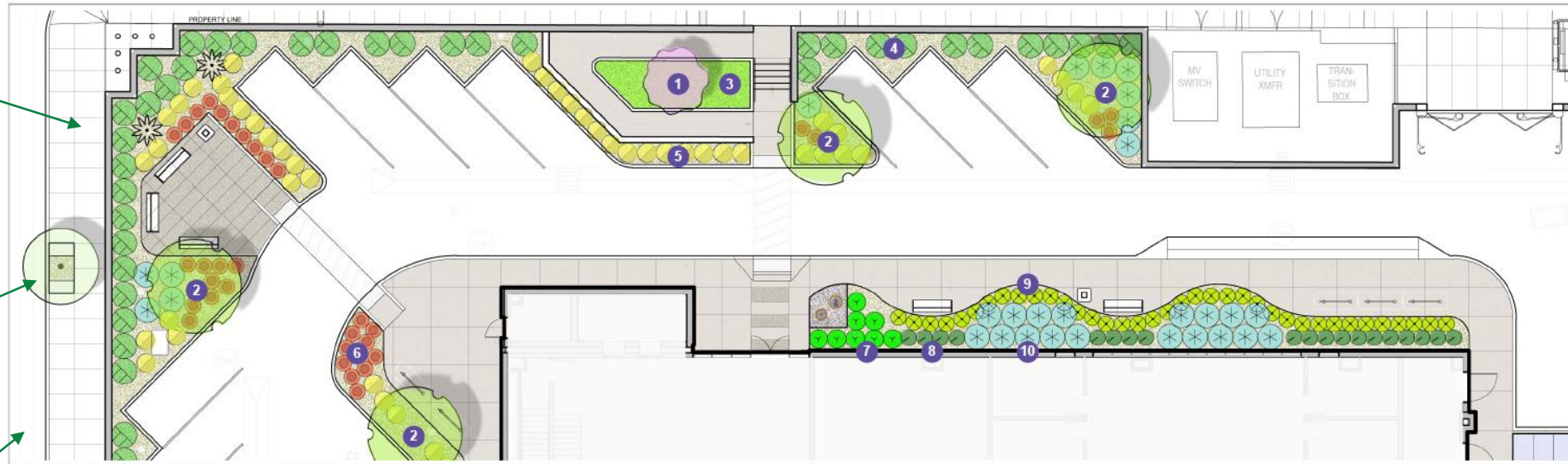
# Landscape and Streetscape Overview

Proposed 9.5-foot-wide sidewalk with pedestrian lights

Center Street

5 new street trees ("London Plane")

New Bike Lane



1 Merlot redbud (15-20 ft tall x wide, blooms in spring)  
*Cercis canadensis 'Merlot'*



2 Desert museum palo verde (20-25 ft tall x wide, blooms spring & sometimes summer)  
*Parkinsonia x 'Desert Museum'*



3 European gray sedge  
*Carex divisa*



4 Coral glow texas yucca (along fence)  
*Hesperaloe parviflora 'Coral Glow'*



5 Orange-stalked bulbine  
*Bulbine frutescens 'Orange'*



6 Coral aloe  
*Aloe striata*



7 Cape rush  
*Chondropetalum tectorum*



8 White-striped sansevieria  
*Sansevieria 'Bartel's Sensation'*



9 Aloe vera



10 Variegated fox-tail agave  
*Agave attenuata 'Variegata'*

NORTH SIDE  
PLANTING PLAN  
SCALE: 1/8" = 1' - 0"  
0 4 8 16 ft



Draft: Subject to Change

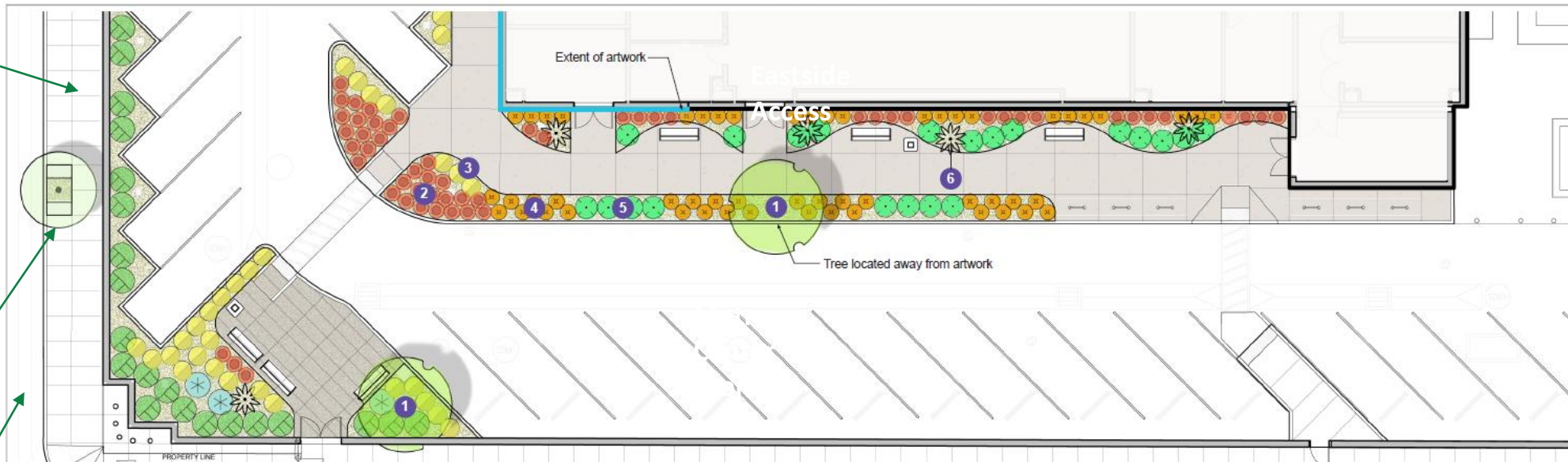
# Landscape and Streetscape Overview

Proposed 9.5-foot-wide sidewalk with pedestrian lights

Center Street

5 new street trees ("London Plane")

New Bike Lane



1 Desert museum palo verde (20-25 ft tall x wide, blooms spring & sometimes summer)  
*Parkinsonia x 'Desert Museum'*



2 Coral aloe  
*Aloe striata*



3 Orange-stalked bulbine  
*Bulbine frutescens 'Orange'*



4 Safari aloe  
*Aloe 'Andora'*



5 Blue glow agave  
*Agave 'Blue Glow'*



6 Tree aloe  
*Aloe barberae*



SOUTH SIDE PLANTING PLAN

SCALE: 1/8" = 1' - 0"



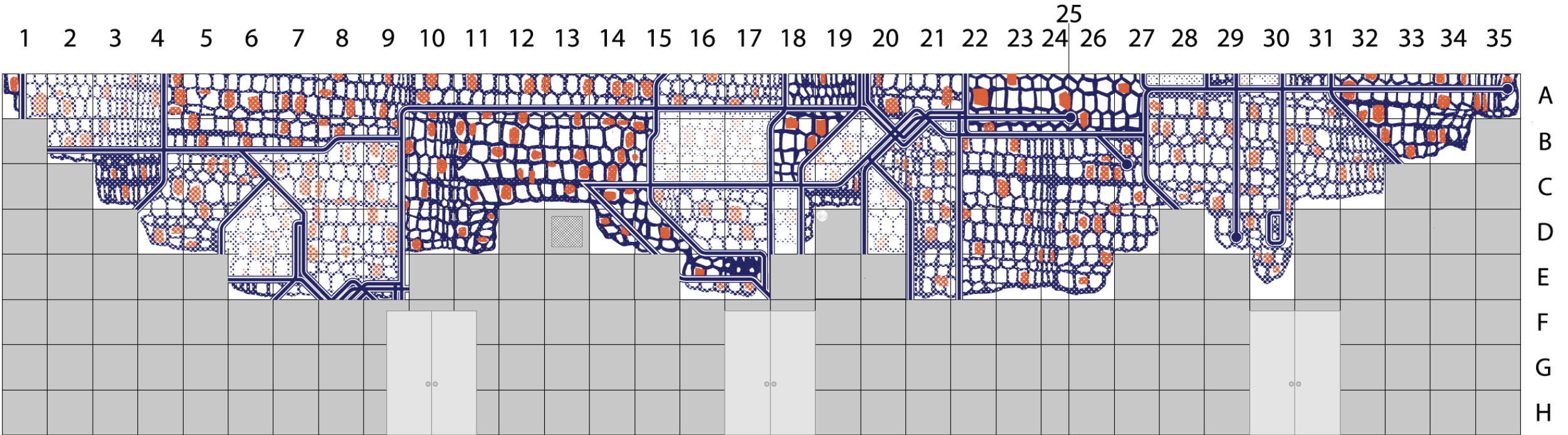
Draft: Subject to Change

# Metro Center Project: Exterior Renderings

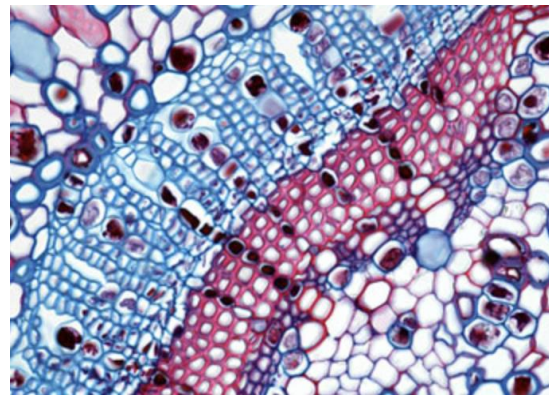
Draft – Subject to Change



# Building Artwork: Design Renderings



Preliminary artwork rendering for MCP



# On Display: Temporary Artwork Construction Banners



Designed by artists Susu Attar and Kuniharu Yoshida, with the Japanese American Cultural & Community Center (JACCC) and Metro Art, "we bear the fruit of our ancestors" is now on display on the temporary construction fence along Center Street.

More information at [metro.net/art](https://metro.net/art)



# 2022 Project Accomplishments

- ✓ Temporary art banners installed
- ✓ Building concrete foundation completed
- ✓ Steel frame of building completed



# 2023 Look Ahead

- Exterior walls and façade on the building
- Interior finishes and site work
- Improvements to sidewalk on east side of Center Street between Jackson St and Ducommun St
- Installation of the exterior artwork on the building façade at Center St and Jackson St
- Substantial completion by December 2023



# Stay Connected



213.922.1111



centrallaprojects@metro.net



[www.metro.net/centerproject](http://www.metro.net/centerproject)



# Questions?

# Next stop: improving rail service.

**DIVISION 20 PORTAL WIDENING AND TURNBACK FACILITY**



**Metro**

**Construction Update**  
September 22, 2022

# Meet the Team

## **Community Relations**

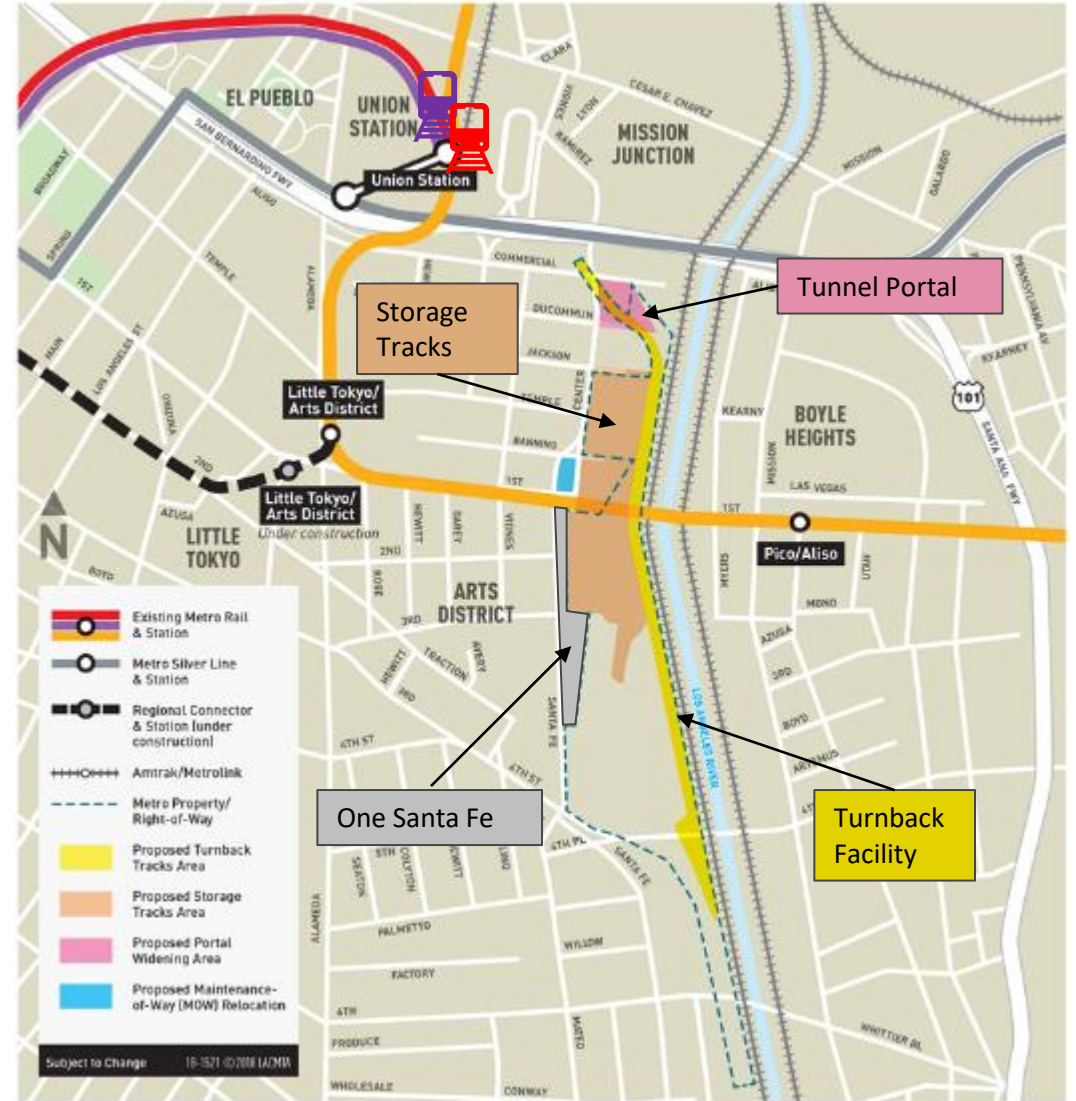
- > **Marlon Walker**, Manager
- > **Ned Racine**, Principal Community Relations Officer
- > **Katrice Candler**, New Media Officer

## **Contractor**

- > **Joanna Amador-Dempsey**, Construction Communications Coordinator

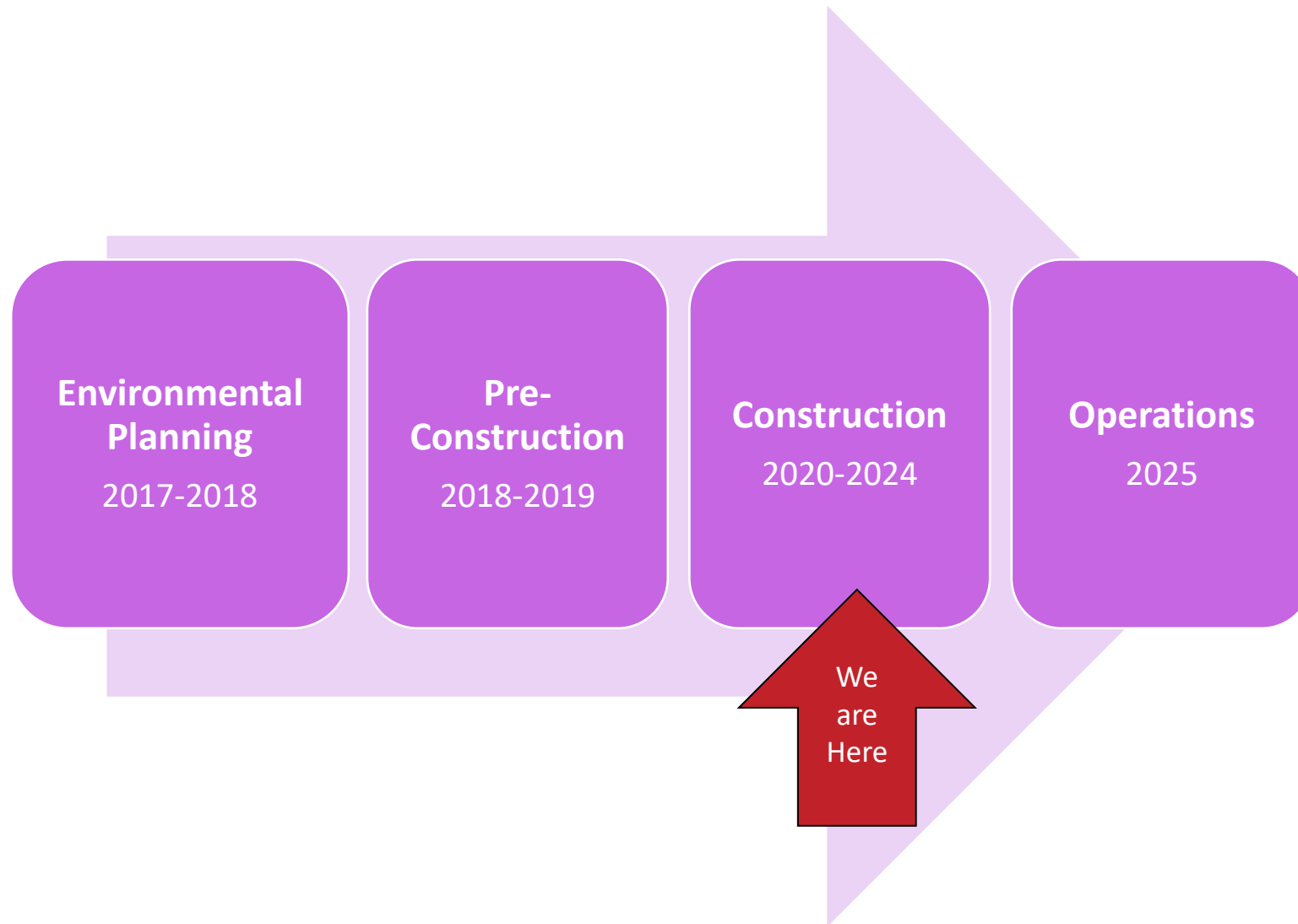
# Project Overview

- Improvements to Metro's Division 20 Rail Yard will provide faster and more frequent service on the Metro Red and Purple (B and D) Lines
- Improvements include
  - Widening of heavy rail portal
  - New turnback facility
  - Expansion, reconfiguration of rail storage tracks



Exact location of turnback tracks and storage tracks to be determined.

# Project Timeline



# Current Work: North Yard

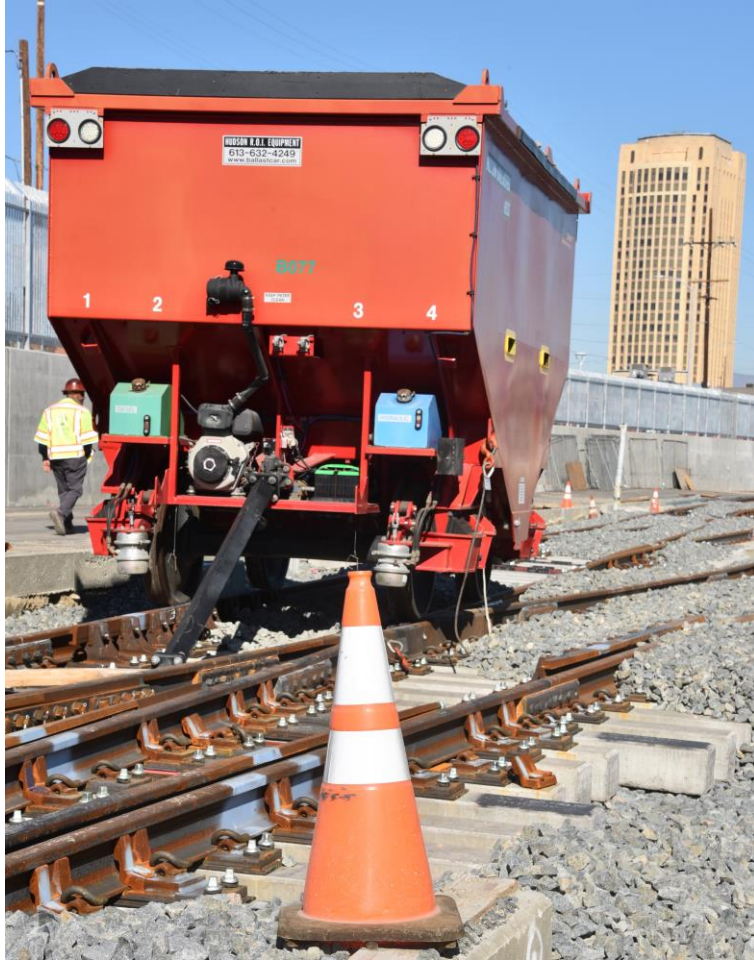
Adding and moving utilities supports additional tracks for more rail car storage

- Domestic water line under Banning St
- Fire water lines
- Lighting duct banks
- Main storm drain
- Installation of train tracks

Vehicles are delivering ballast for the new rails in the north yard.



# Current Work: North Yard



New rail tracks have been installed in the north yard. The ballast pile (left) will be used for more tracks.

# Current Work: Portal Area

## Portal Widening

Once the portal is expanded from two to four tracks, the turnaround time for subway cars from the rail yard to Union Station will shrink.

The portal demolition will be beginning late November 2022. During this work, removal of the walls, tracks, and installation of new tracks and wall will be created for the widening of the portal.



The highlighted concrete walls will soon be demolished. Once these walls are removed, two additional tracks will be added south of the portals.

# Current Work: Portal Area



Equipment beginning demolition of tracks south of the portal.

# Current Work: Center St

- Eleven light poles were installed along the east side of Center St.
- Work continues along east Center St to install utilities, sprinkler system, and planter wells.
- East sidewalk will remain closed until workers installation in the north yard.
- Construction on the east sidewalk (right photo) has been completed.



The permanent fence and lighting installed above.

# Current Work: 1st Street Bridge

## 1st Street Bridge Modifications

These modifications (continuing through February 2022) provide more structural support, allowing bents to be removed, enabling more tracks to run under the bridge.



Falsework and bracing for the bent support at Bent 13.



Girders installed on to support the removal of Bent 13.

# Current Work: South Yard

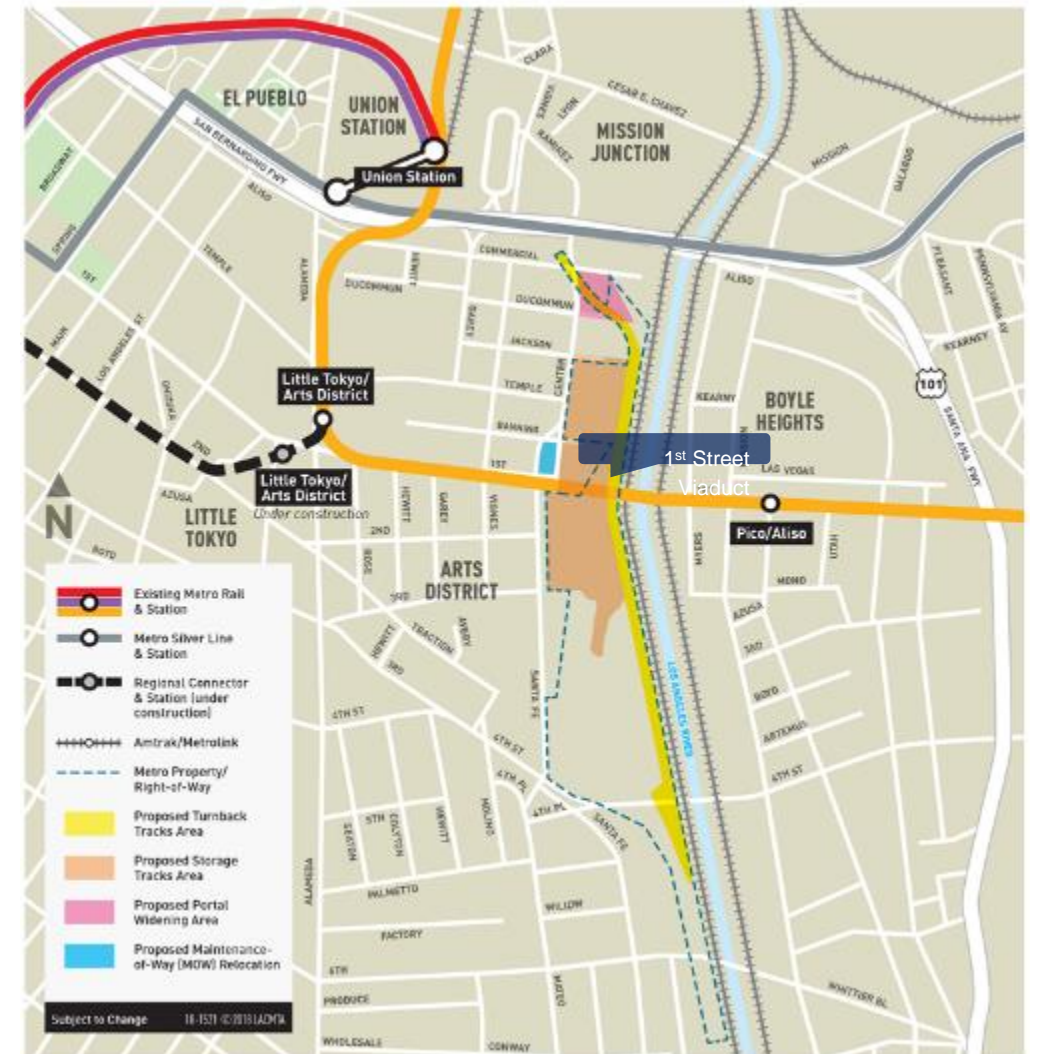
Workers ready the back-up generator pad, which will bring electrical power to the future yard.



# Upcoming Work

*\*Work is subject to change*

- Begin dewatering at the portal
- Continue structural improvements to prepare for the demolition of Bent 13 on 1st Street Bridge
- Demolition of the portal walls and tracks
- Construct portal foundation and walls
- Install track



# Construction Mitigations

## Best practices on the Division 20 construction site

- Equipment and staging areas shall be located away from noise-sensitive receivers, and noise barriers should be used when possible.
- Minimize high-impact devices such as jackhammers and hoe rams.
- Utilize lower impact devices such as concrete crushers and pavement saws.
- Refrain from idling equipment.
- Use frequent watering to reduce dust.



Noise monitoring equipment near One Santa Fe.



Contractor team supporting dust mitigation in the south yard.

# 2022 Accomplishments and Challenges

## Accomplishments

- Installation of rail, ties, special trackwork, and ballast placement at the North Storage Yard.
- Preparation for the girder concrete splice pour on the First Street Bridge.
- Installation of street lighting and pedestrian lighting on east side of Center Street.

## Challenges

Continued challenges with both known and unknown utility conflicts – Contractor, Project Team and Operations improving procedures to identify conflicts in advance



# Stay Connected



213.922.6934



div20portalwidening@metro.net



[www.metro.net/divison20](http://www.metro.net/divison20)

Questions?

# Central Los Angeles Projects: Next Meeting

> Let us know your thoughts

> [Survey](#)



**213-922-1111**



**Centrallaprojects@metro.net**

