

# Welcome!

*We will begin in a few moments.*

Central Los Angeles

July 2022

# Housekeeping

Today's meeting is being recorded.



Attendee cameras are off and microphones are muted.



During the meeting, comments can be submitted using the Q&A icon.



For technical support, call or text 213.276.6008

**THANK YOU**

# Welcome and Agenda

---

**Thank you for joining us!**

---

Metro Announcements: Wendy Cardona and Mayen Alcantara

---

Central LA Region: Wendy Cardona

---

Eat Shop Play: Jesus Galeno

---

Regional Connector Transit Project: Wendy Cardona and Lorena Hernandez

---

East Side Access Improvement Project – Katrice Candler

---

Center St Project: Katrice Candler and Mayen Alcantara

---

Division 20: Ned Racine

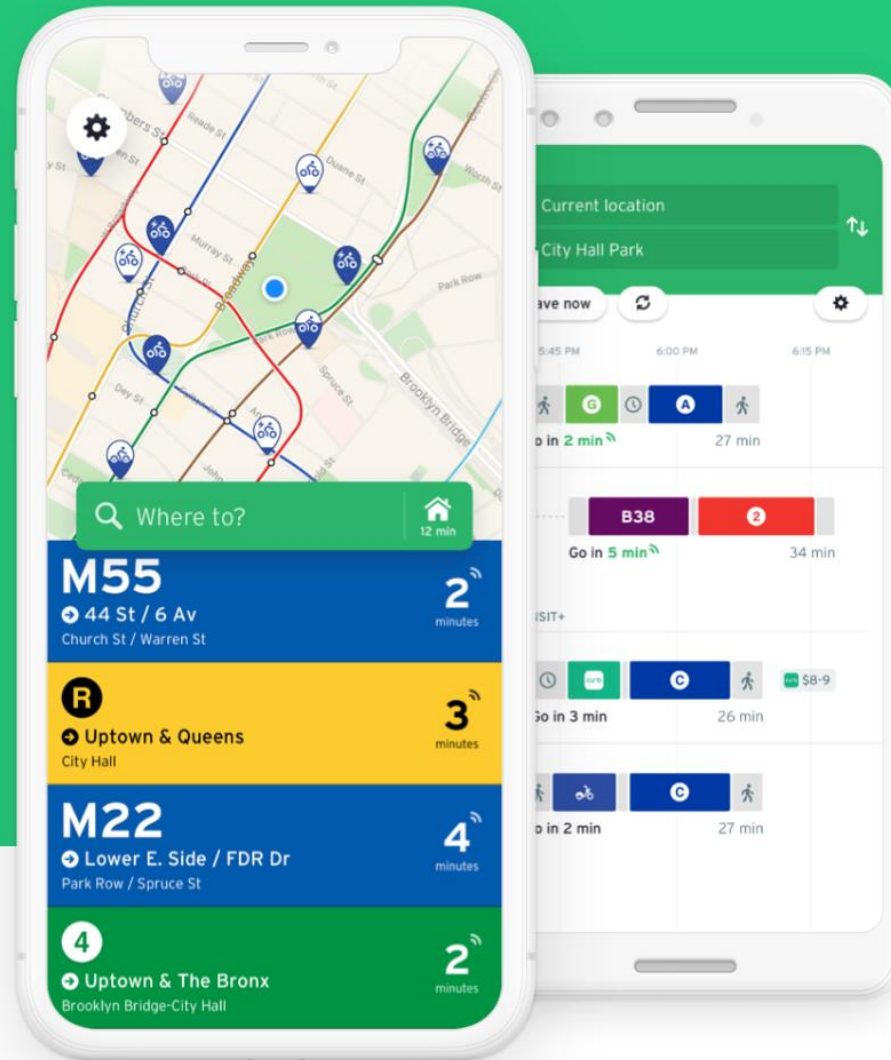
---

# Agency Announcements

GO YOUR  
OWN WAY



It's in the Name™





LA Metro  
Transit Watch

# Metro Artist-led Conversation: Underground Astronomy: Art, Geology and Cosmology

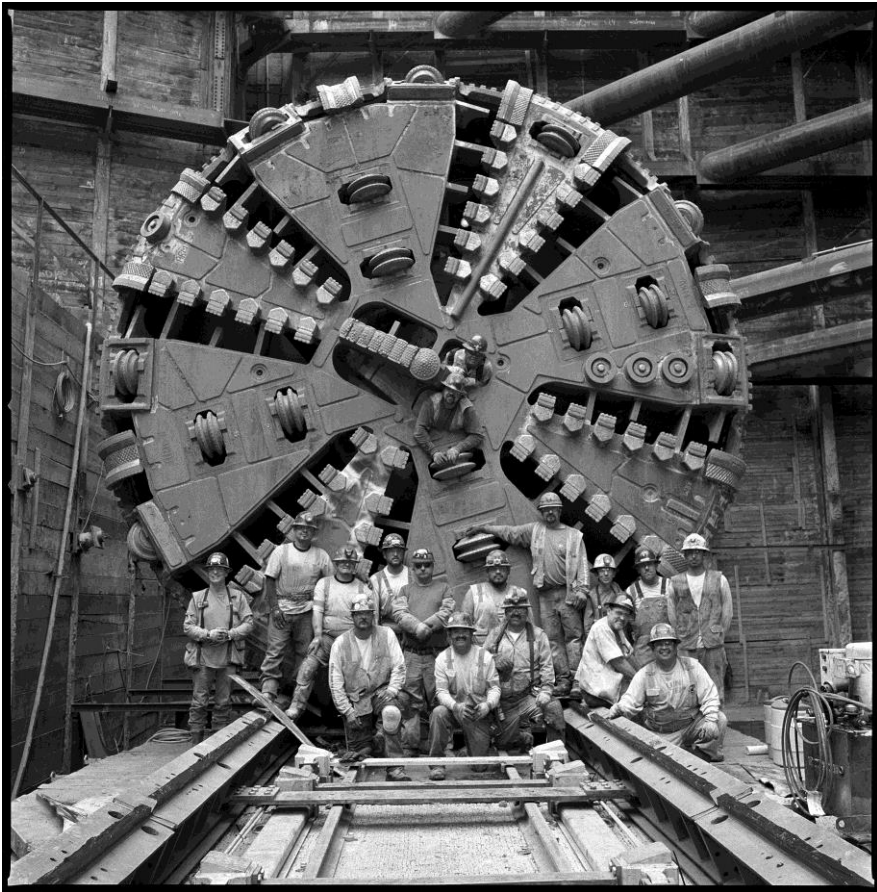
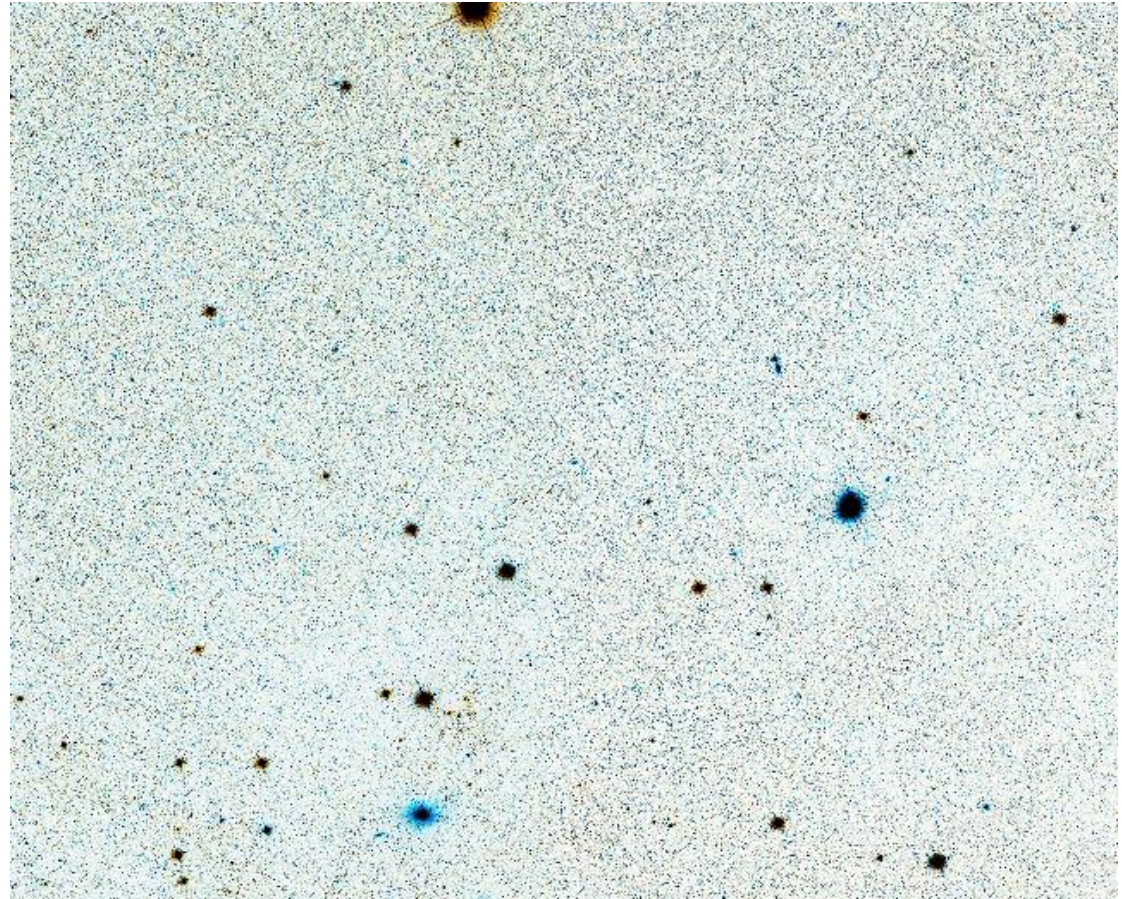


Photo by Ken Karagozian



Detail, *Negative Space (STScI-2015-02)*, Mungo Thomson



*We Are...Portraits of Metro Riders by Local Artists, Union Station Passageway Art Gallery*



# New destinations featured in the Through the Eyes of Artists series installed in Metro buses countywide:



## Canoga Park

Through the eyes of artist  
*Sevag Mahserjjan*

Theatres and assembly halls grace this San Fernando Valley community, while the palm trees dress its vibrant boulevards. As the area has evolved, the mountains have kept a watchful eye.

Visit [metro.net](http://metro.net) and Go Metro to Canoga Park.



Meet the artist event was on June 16th at Canoga Pop II Art Walk & Music Festival

a.  
Upcoming meet the artist event Wednesday, August 3rd  
Temple City Concerts in the Park

More info at [metro.net/art](http://metro.net/art)



## Temple City

Through the eyes of artist  
*Maryrose Cobarrubias Mendoza*

This imagined bookshelf holds mementos of the lives, history, architecture and spirit of the city. An unmarked book represents the stories still to come.

Visit [metro.net](http://metro.net) and Go Metro to Temple City.

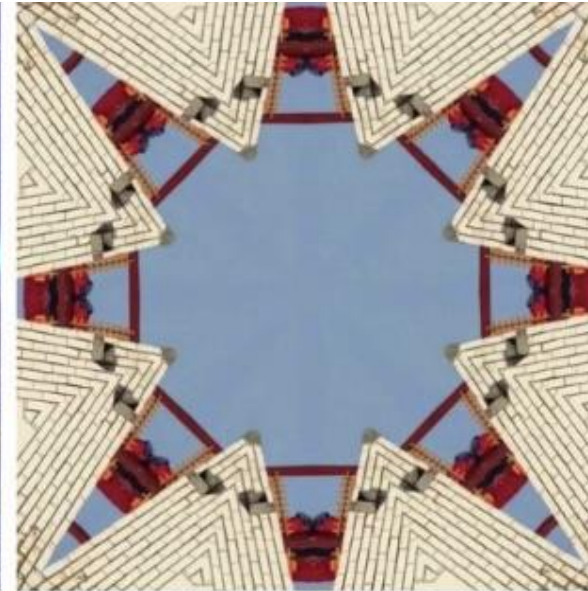
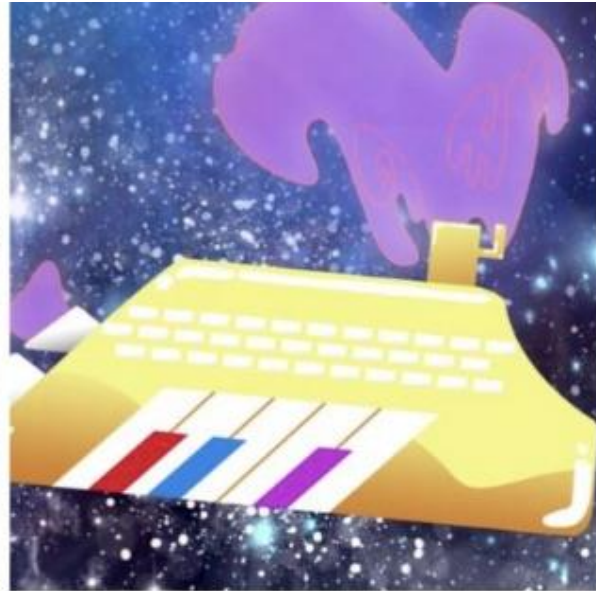
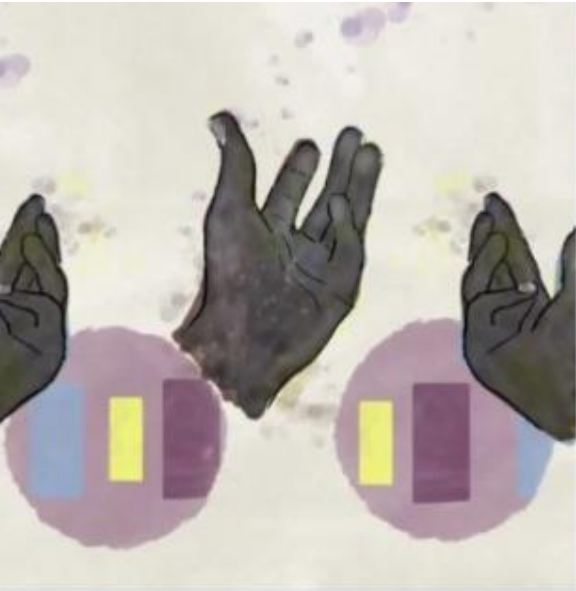




# **CALL TO ARTS & CULTURAL ORGANIZATIONS**

[metro.net/artsorgpool](https://metro.net/artsorgpool)

# 2022 Artist Pool for Digital Media Opportunities



**Open to artists and artist teams working in digital media**

**Submittal deadline is August 31, 2022 at 11:59 pm**

● Maybe ● it ● was ● about ● nine  
years ● that ● we ● haven't ● met?  
● At ● the ● first ● glance, ● I ●  
knew ● it ● was ● you. ● Your  
way ● of ● calling ● my ● name,  
● the ● pauses ● between ● the ●  
words ● you ● say. ● We ● sat ●  
outside ● of ● a ● small ● cafe  
near ● the ● station ● and ● chat  
hours ● and ● hours. ● Do ●  
● you ● remember ● that ● day?



Please follow the link below for more details

*[metro.net/art](https://metro.net/art) under Art Opportunities.*

# Metro Art Bus



#MetroArtBus #SomosWeAreLA.

# More Metro Art...

[metro.net/art](http://metro.net/art)

Join our eblast by clicking “Art Opportunities”

## Follow us on:

Instagram: [@meto.art.la](https://www.instagram.com/meto.art.la)

Facebook: [@metroartla](https://www.facebook.com/metroartla)

# Central LA Project Team

Centralized communications approach with the community and projects

Core community relations team

Assist with construction related comments and concerns

Serve as a conduit of community priorities within Metro

Five Projects:  
Div. 20 \* EAIP \* Link US \* Metro Center Project \*  
Regional Connector

# Central Los Angeles Projects

Project	Status	Projected Completion
Regional Connector	Construction	2022
Eastside Access Improvements Project	Construction	2022
Center Project	Construction	2023
Div. 20 Portal Widening & Turnback Facility	Construction	2024
Link US Phase A	Design	2024* (*design)

# Central Los Angeles Projects: What's Next

- > Next Meeting: September 22, 2022
- > Let us know your thoughts
- > [Survey](#)



**213-922-1111**



**Centrallaprojects@metro.net**





An illustration of a transit station. In the foreground, a yellow and black train is stopped at a platform. The train has "Metro Rail" written on its side and a "Go Metro" sign above the door. A person is standing near the train door. To the left, a set of stairs leads up to an upper level. Several people are walking on the stairs. In the background, a city skyline is visible under a yellow sky. One building is labeled "Rose Bowl".

# Next stop: the missing link.

REGIONAL CONNECTOR TRANSIT PROJECT

# Introductions

# Regional Connector Project Team

## **Project Management:**

- Mat Antonelli
- Huburt Kang
- Tung Vu

## **Regional Connector Constructors:**

- Ivan Yee
- Philip Mateo

## **Community Relations:**

- Olga Arroyo
- Lorena Hernandez
- Wendy Cardona
- Ginny Brideau
- Jesus Galeno

## **Art Program:**

- Letitia F. Ivins
- Jennifer Lieu

# Community Leadership Council (CLC)

# CLC Members

## Little Tokyo/Arts District

- > Chris Aihara, Co-Chair  
Little Tokyo Community Council
- > Miguel Vargas, Co-Chair  
Arts District LA BID

## Historic Broadway

- > Vahn Babigian, Co-Chair  
Metropolitan News

## Grand Av Arts/Bunker Hill

- > Dave Thompson, Co-Chair  
Brookstone Properties

## Grand Av Arts/Bunker Hill

- > Jamie Fang, Co-Chair  
Promenade, Orchids.com

## Flower St/Financial District




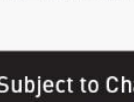
- > Michael Shilstone, Co-Chair  
Central City Association
- > Tom Jung, Co-Chair  
Los Angeles Central Library

## At-large Members

- > Ron Lozano, Consultant
- > Joel Wynton, Stakeholder

# Project Overview

- > 1.9-mile underground light-rail system
- > Three underground stations
  - > Little Tokyo/Arts District (1st St/Central Av)
  - > Historic Broadway (2nd St/Broadway)
  - > Grand Av Arts/Bunker Hill (2nd Pl/Hope St)
- > 90,000 daily passengers expected
- > Slated to open for rail passenger service in 2022

 Existing Metro Rail & Station  
 Regional Connector & Station (under construction)  
 Metro Silver Line & Station  
 Amtrak/Metrolink

Subject to Change 17-1328 ©2017 LACMTA



Gold continues along current Expo Line route to Santa Monica.

Blue continues along current route to Long Beach.

Blue continues along current Gold Line route to Azusa.

Gold continues along current route to East LA.





# Operational Plan

- > Board approved October 2020
- > Connect the L Line to the A and E Lines
- > One-seat ride between Azusa and Long Beach; East LA and Santa Monica





# Project Update and Look Ahead

Activity	Little Tokyo/Arts District	Historic Broadway	Grand Av Arts/Bunker Hill	Flower St/Financial District
<b>Construction</b> > Stations	Concludes 2022			
<b>Civil Restoration</b> > Tree replacement, lighting, sidewalks, final paving & striping, etc.	Concludes 2022			
<b>L Line (Gold) service interruption</b>	Concludes 2022	-	-	
<b>Testing</b>	2022			
<b>Revenue Operations</b>	2022			



We're supporting local businesses  
in your neighborhood.



EAT SHOP PLAY

# Eat Shop Play Outcomes

- > Advertising for businesses that could not otherwise afford it
- > Increased exposure and visibility for small businesses locally
- > New business opportunities (direct sales, catering opportunities)
- > Increased or minimal reduction in customer traffic during construction
- > Business friendly changes to construction practices (construction hours, access, signage)

# Eat Shop Play

Eat Shop Play highlights local mom and pop businesses in DTLA and Little Tokyo, especially eateries and specialty businesses operating pick-up and delivery during the past months.

The Eat Shop Play DTLA and Little Tokyo programs continue supporting local businesses as construction progresses by promoting them through regular social media posts and newsletters to over 6,000 community members.



# Social Media Spotlights



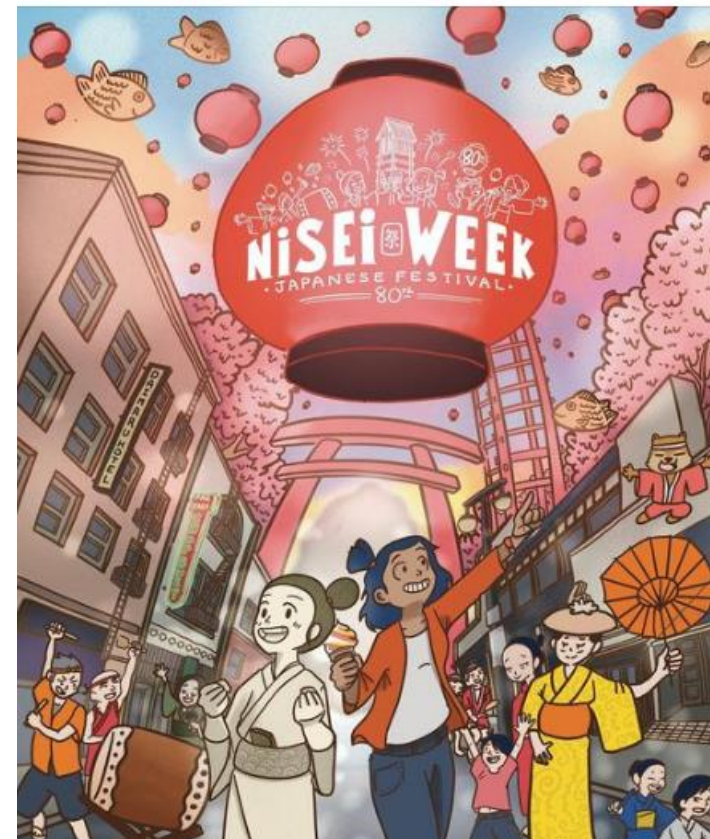
Plan your perfect picnic with [@TheLibraryStore](#). Tools and kits to grow your ingredients, cookbooks and cookware to prepare them, and boredom busters to keep you active. This weekend, please enter on Grand Ave.

[#EatShopPlay](#) [#DTLA](#)  
Support Local Businesses  
[bddy.me/3PbvbVX](https://bddy.me/3PbvbVX)



Nisei Week is almost here! Visit [Nisei Week Foundation's](#) page for more information and mark your calendars for the festival's 80th iteration.

[#EatShopPlay](#) [#LittleTokyo](#)  
Support Local Businesses  
<https://bddy.me/3bf1ip5>



# Summer Newsletter Spotlights

## Little Tokyo & DTLA



### Akimoto Chiropractic Office

Akimoto Chiropractic Office has been helping the community enjoy a relaxed and pain free lifestyle since 1981.

Book an appointment today and enjoy summer to the fullest, free of neck, shoulder, back pain, and more.

712 1st St  
213.617.9224

[Learn More](#)



### Lemonade

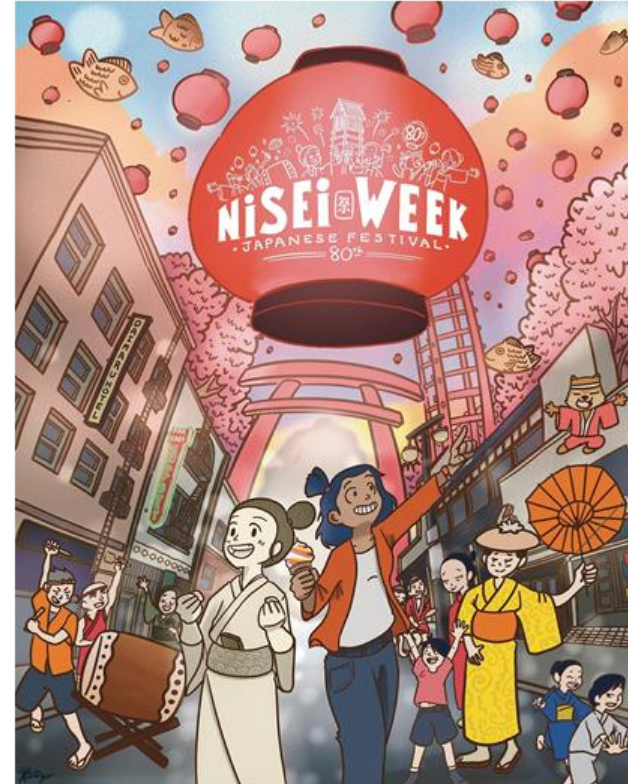
Nothing embodies summer quite like some cool and refreshing lemonade and Lemonade DTLA more than lives up to the name.

Fresh, seasonal, and delicious comfort food paired with a dozen varieties of lemonade.

505 Flower St  
213.488.0299

[Learn More](#)

## Events



### Nisei Week

The Nisei Week Japanese Festival is a nine-day cultural event held in the historic Little Tokyo District of Downtown Los Angeles.

Plan your trip and stop by for an educational and enriching week of fun events, good food, and community.

August 13 -21, 2022

[Learn More](#)

# Eat Shop Play

## ESP Business Spotlights:

- Metro Regional Connector Social Media Spotlights
- Regular Regional Connector Eat Shop Play email spotlights

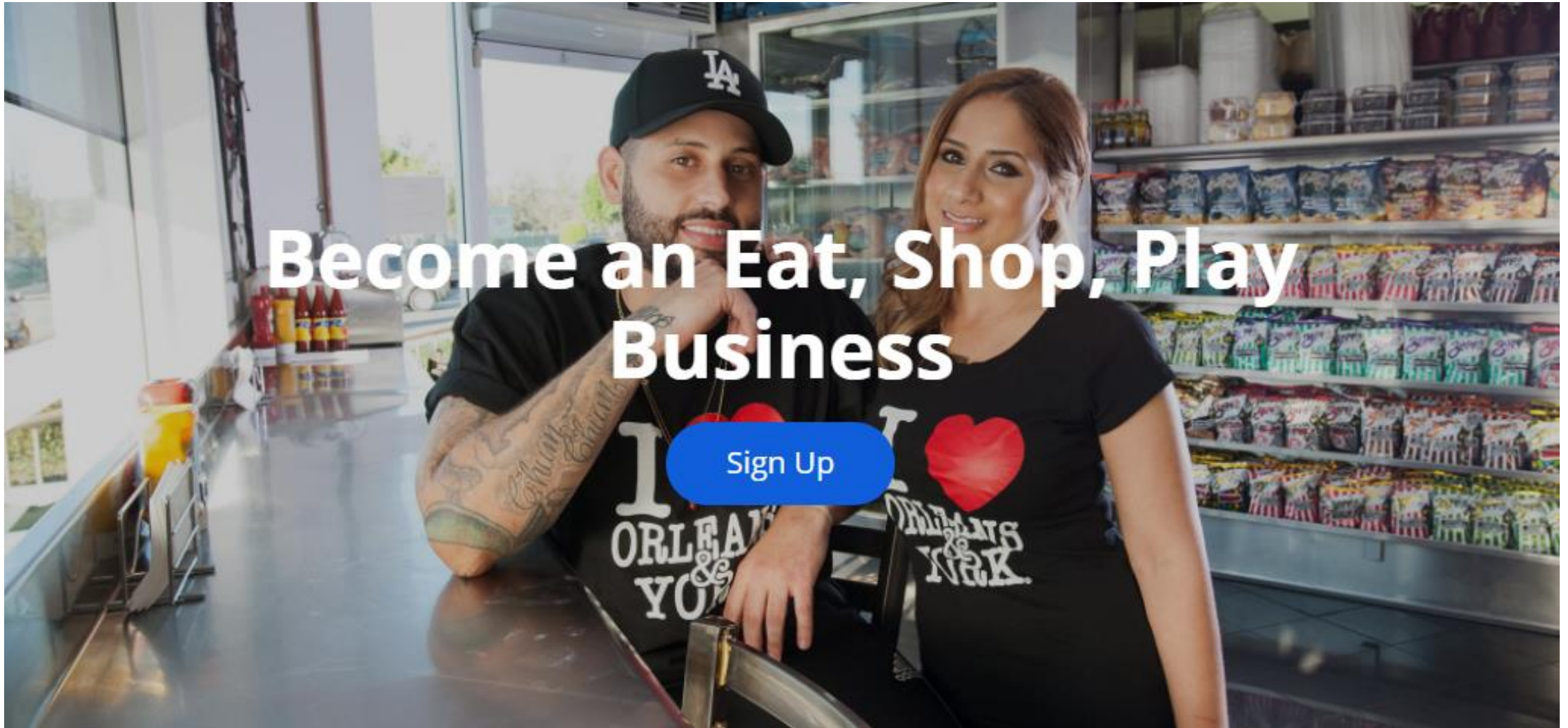
## ESP Program Statistics: July 2021 – June 2022:

- Number of Regional Connector Eat Shop Play businesses: 60
- Eat Shop Play Social Posts: 121
- Eblasts & Newsletter Features: 11
- Total Individual Business features: 132





# More Information



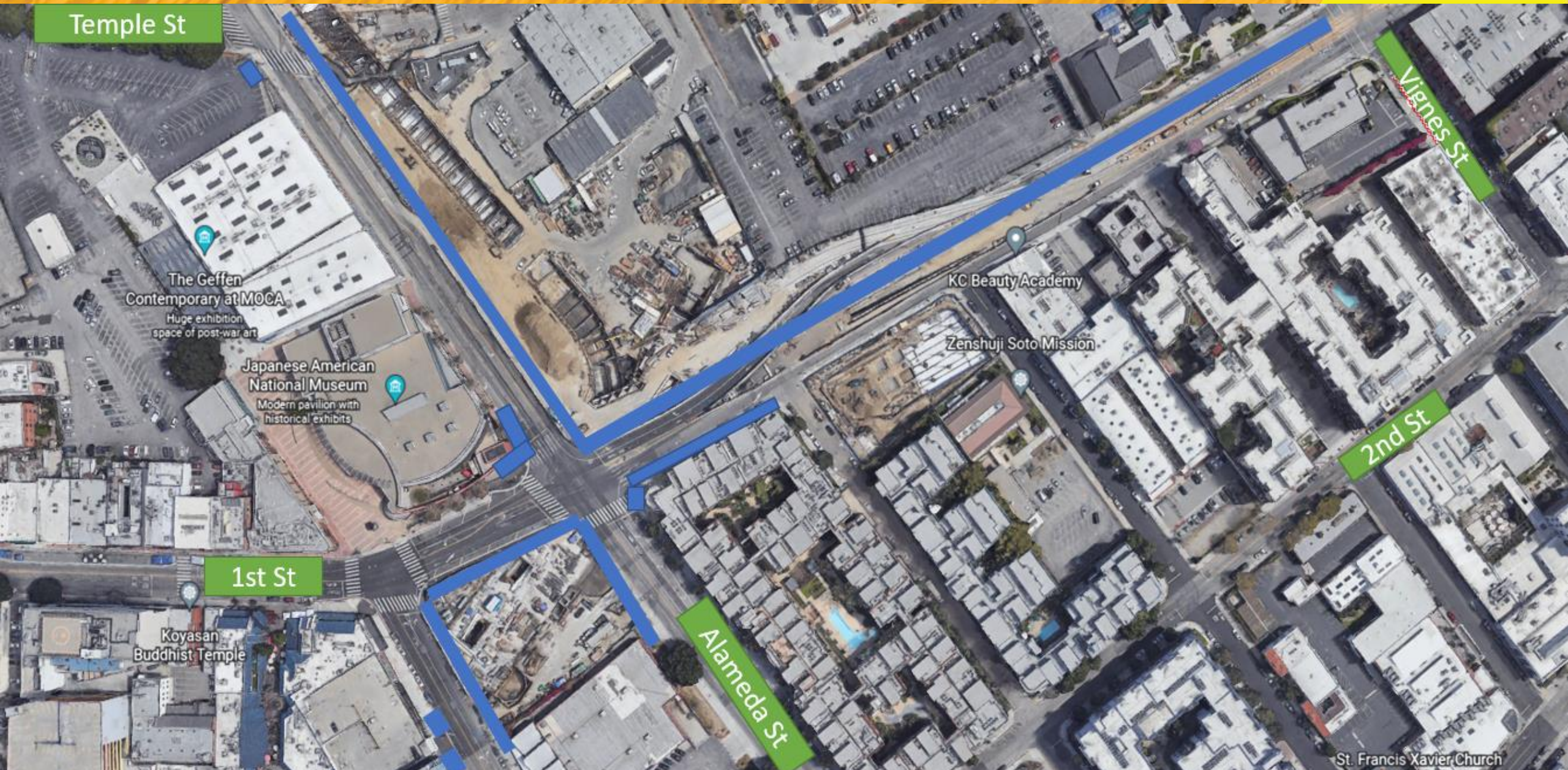
# Project Wide Civil Improvements

An architectural rendering of a modern transit station. The station features a prominent glass and metal structure with decorative panels. The panels are adorned with colorful, stylized patterns in shades of purple, blue, and orange, reminiscent of traditional Japanese or Japanese-American art. The station is situated in an urban environment with palm trees and other greenery in the background. A 'Metro' logo is visible on a building to the left. People are shown walking around the station, and a bicycle is parked nearby. The overall scene is set during the day under a clear sky.

# Little Tokyo/Arts District Station

Artist: Clare Rojas  
Location: Glass entry pavilion

# Civil Improvements - Little Tokyo Area

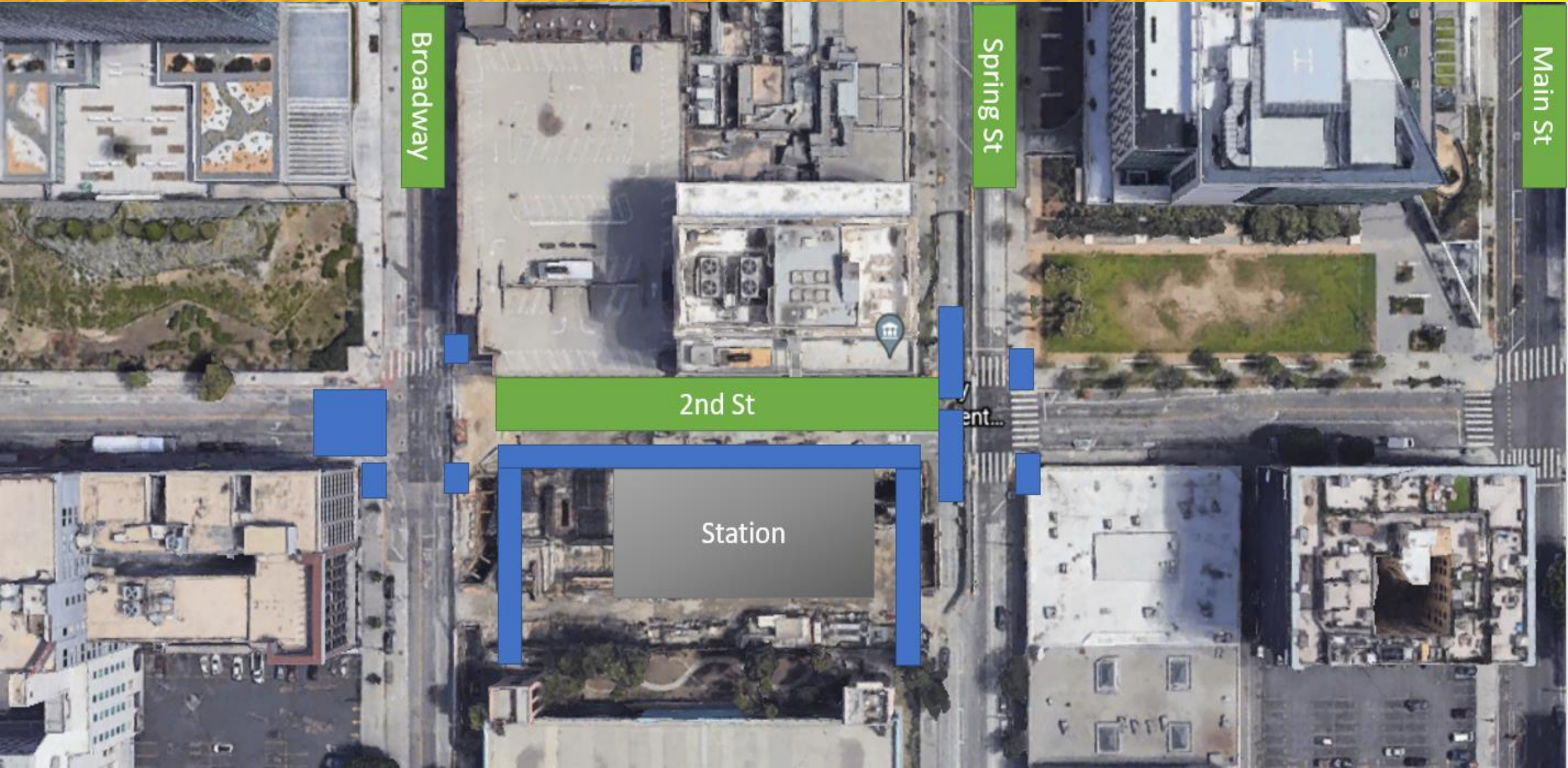


An architectural rendering of the Historic Broadway Station glass entry pavilion. The scene is viewed from an elevated perspective, showing a modern, multi-level structure with a prominent glass-enclosed staircase and a glass-walled pavilion. The architecture is characterized by clean lines and a mix of materials, including concrete, glass, and metal. A large mural with the words 'THE PEOPLE UNITED NEVER' is visible on a wall in the background. The station is surrounded by a paved plaza with various people walking, some pushing a stroller, and a few trees. A street with cars is visible in the upper right corner. The overall atmosphere is one of a modern, accessible public space.

# Historic Broadway Station

Artist: Andrea Bowers  
Location: Glass entry pavilion

# Civil Improvements - Historic Broadway



# Grand Av Arts/Bunker Hill Station

Artist: TBD

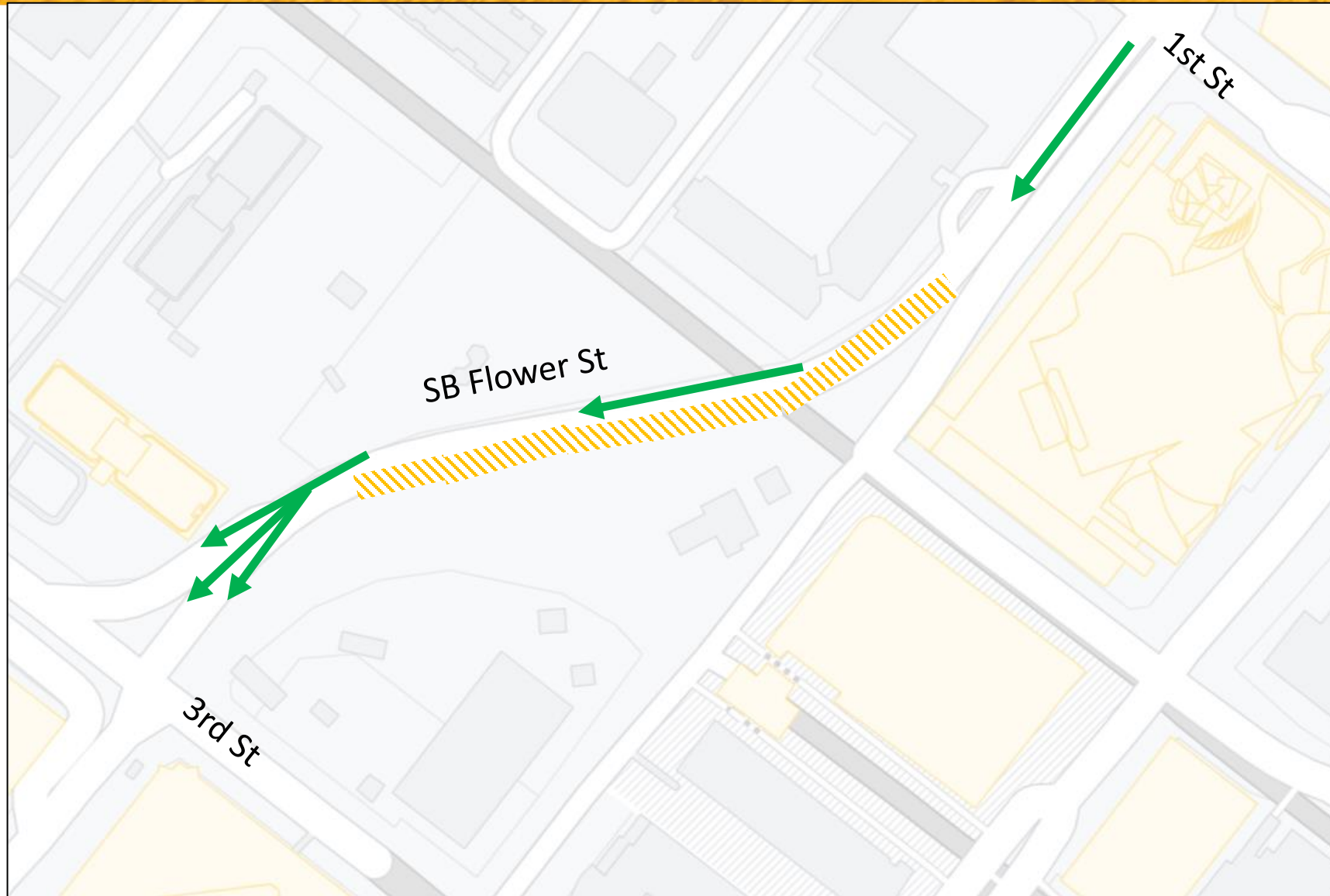
Location: Glass Entry Pavilion

# Civil Improvements – Flower District

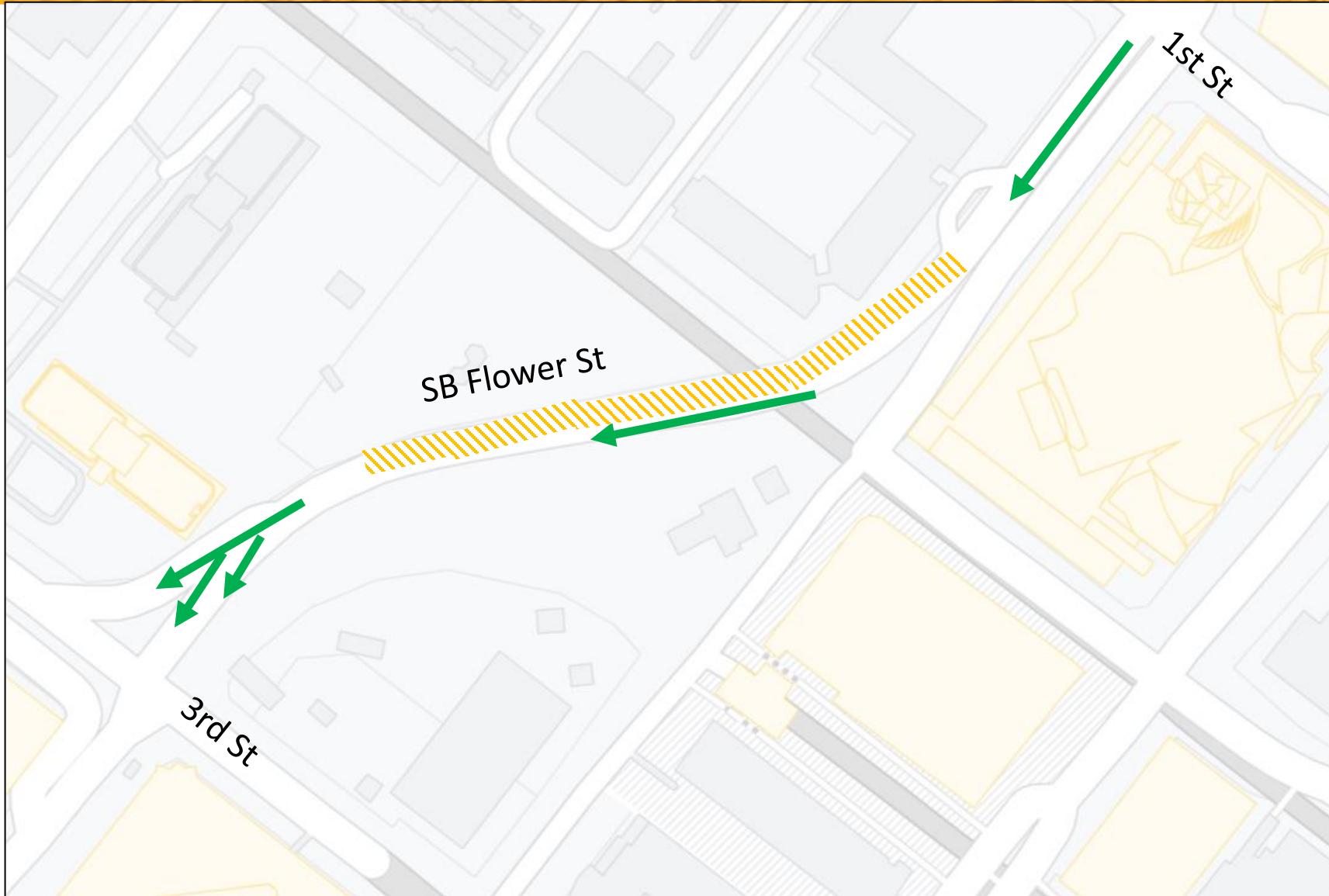




# Southbound Flower St Restoration: Phase 1



# Southbound Flower St Restoration: Phase 2



# Southbound Flower St Restoration: Activity Summary

- Street restoration
  - Southbound Flower St, 1st St to 3rd St
  - Two phases, each lasting 5 weeks
  - Maintains one thru traffic lane
  - Anticipated to start Summer 2022
  - Anticipated daytime and late evening work hours

# Final Street Reconfiguration Around Station



# Community Outreach and Engagement



Construction notices



Stakeholder briefings



Door-to-door distribution within ½ mile radius



Email notice distribution



Posting on Next Door



Postings on Facebook and Twitter



Waze map integration



Project website

# Stay Connected



213.922.7277



regionalconnector@metro.net



[www.metro.net/regionalconnector](http://www.metro.net/regionalconnector)

Questions?





# Meet the Team

Olga Arroyo,  
Community  
Relations  
Manager

Katrice Candler,  
Principal  
Community  
Relations Officer

Rafi Zamani,  
Construction  
Project Manager



# Project Overview

The Eastside Access Improvements will implement streetscape, pedestrian safety and bicycle access improvements within a ½ mile radius around the future Metro Little Tokyo/Arts District Station at 1<sup>st</sup>/Central.



Walk/Bike Esplanade



Wayfinding Signage



Class II BikeLanes



Crosswalk Installation



Storm Parkways  
(Biowales)



Decorative Crosswalk  
Restoration



Street Trees



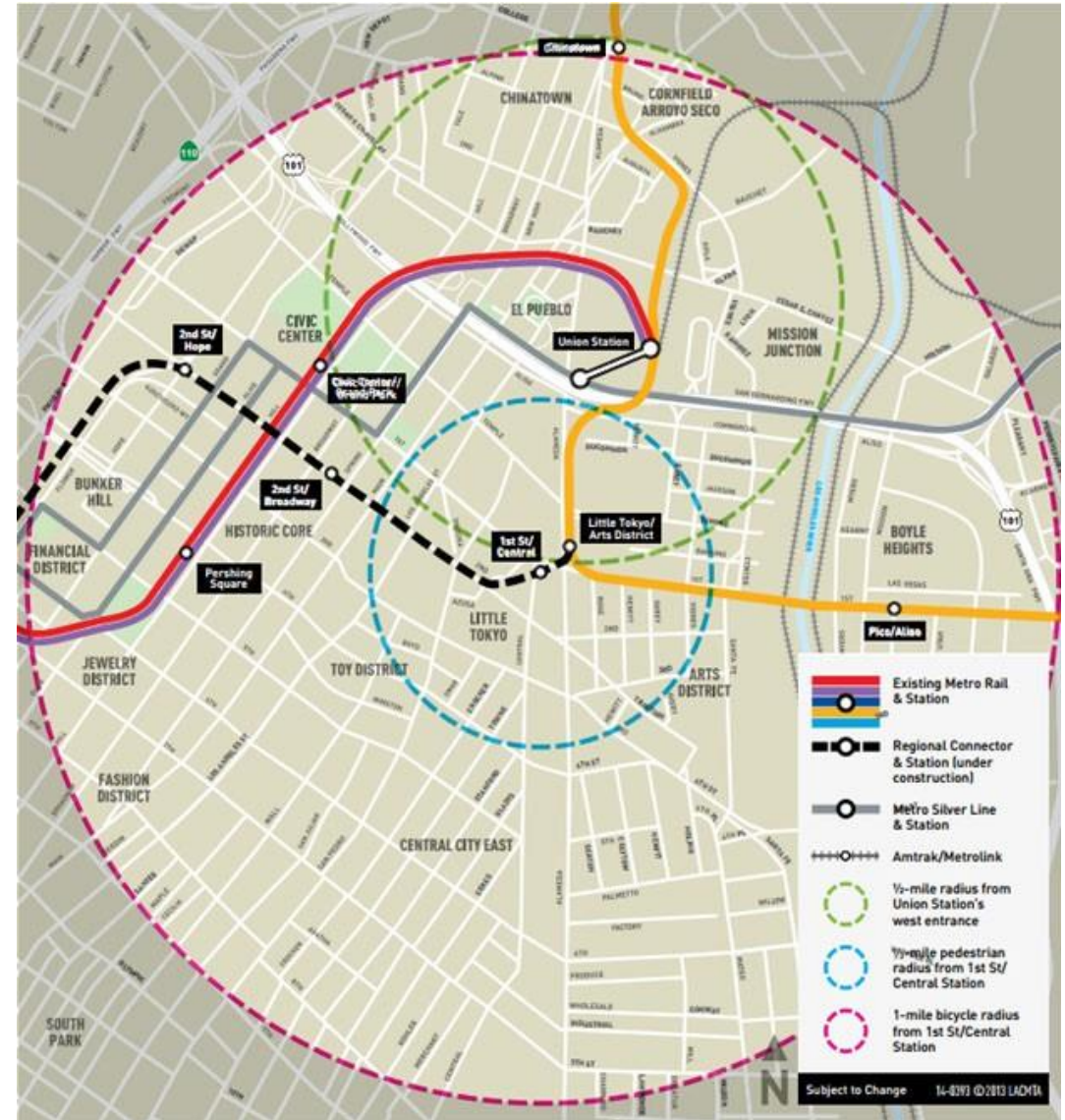
Street Furniture  
Restoration



Street Light LED  
Conversion



ADA CurbRamp  
Installation



# Project Timeline

March 18, 2021: Metro Board of Directors Approved Project

- > Budget 29.7 Million Investment

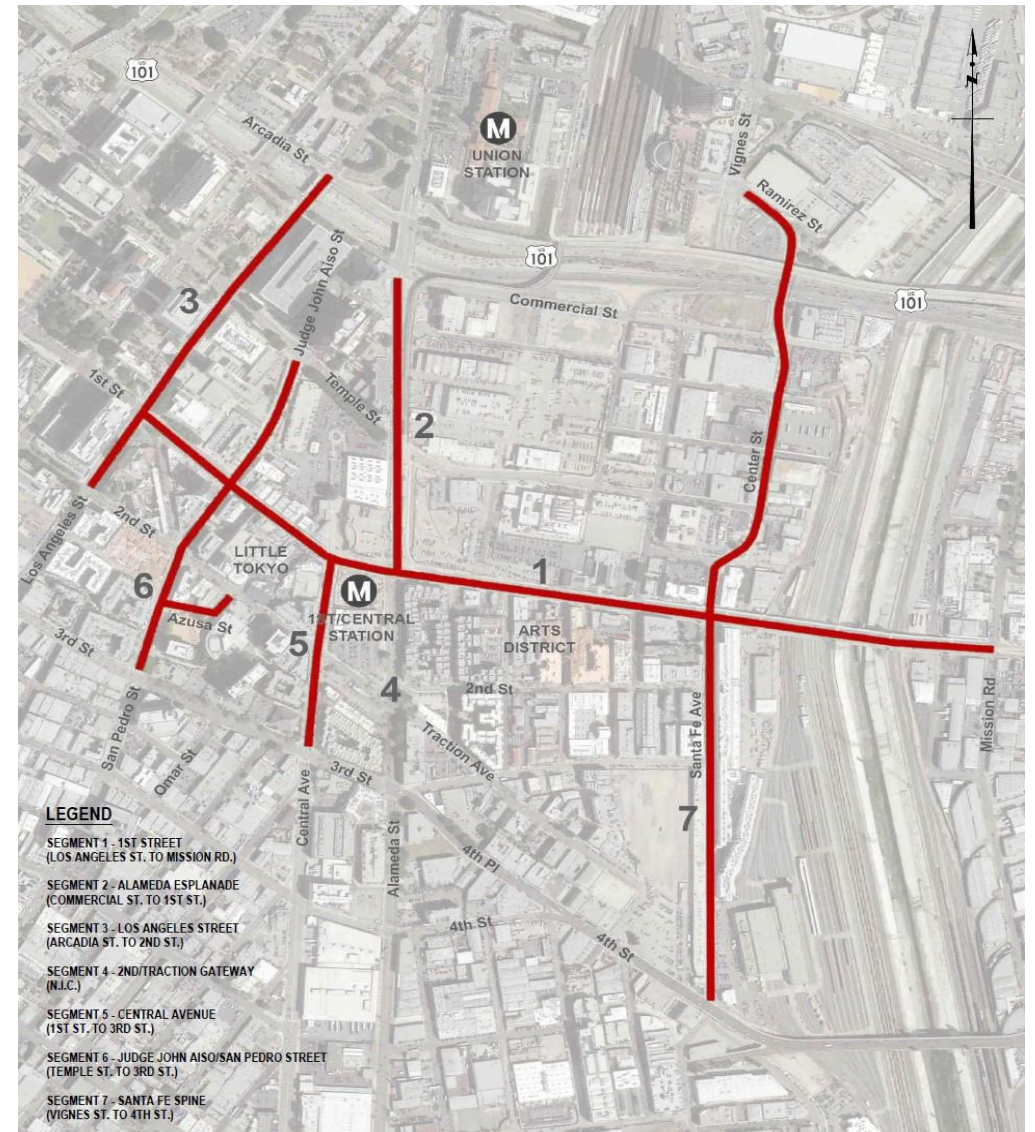
July 2021: Contractor notice to proceed.

- > Construction process initiated

Construction Duration

September 2021 – December 2022

This includes completion of Alameda Esplanade



# K-Rail Extension: NB Alameda to Commercial

Facing NB Alameda



# Luminaire Work - Completed

1st St / Judge John Aiso St



3rd St / Judge John Aiso St



# Decorative Crosswalk Work - Completed



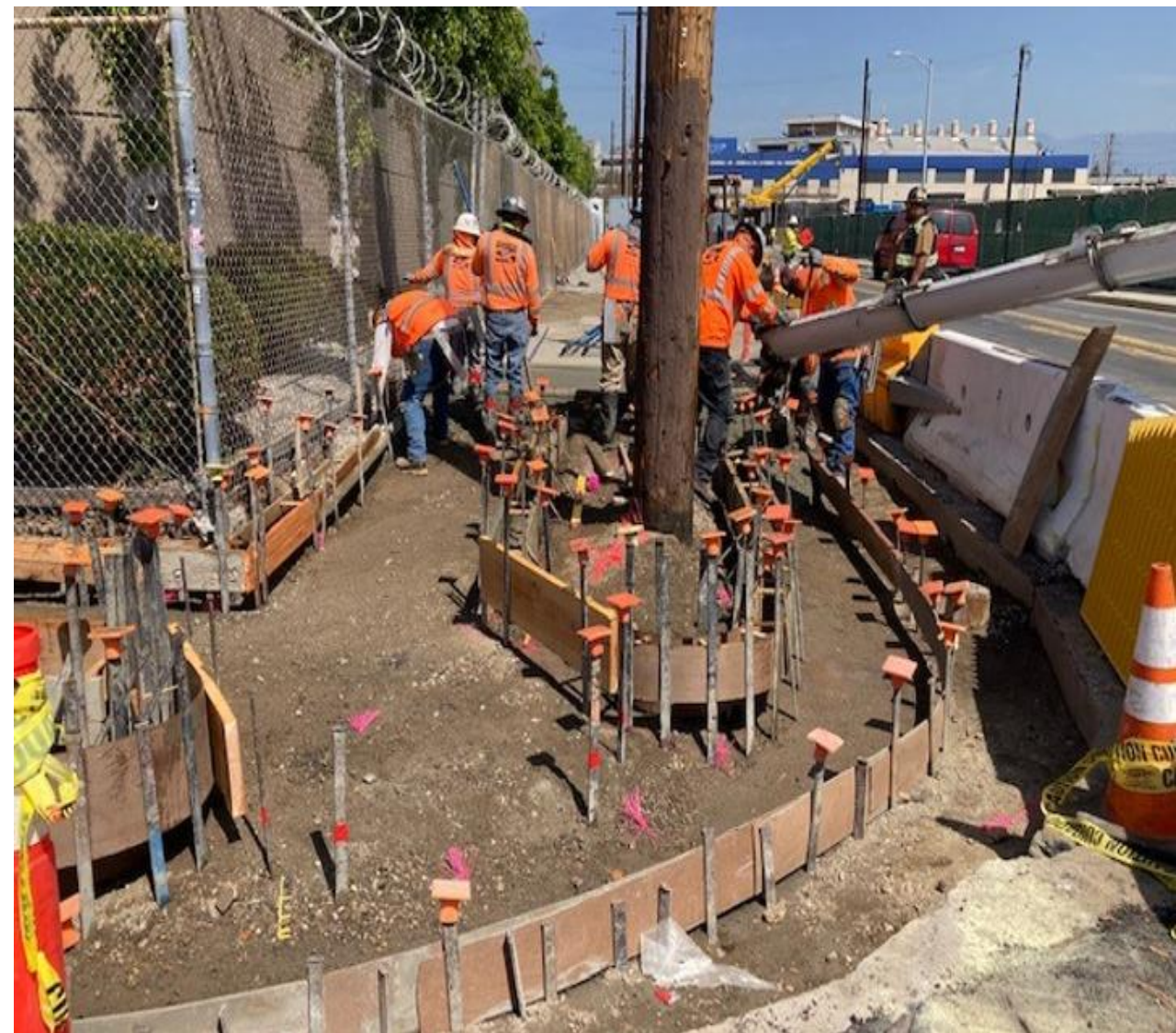
# Streetlight and Pedestrian Signal Light Installations - Completed



Mid-block Crossing on Santa Fe Av between 3rd and 4th St



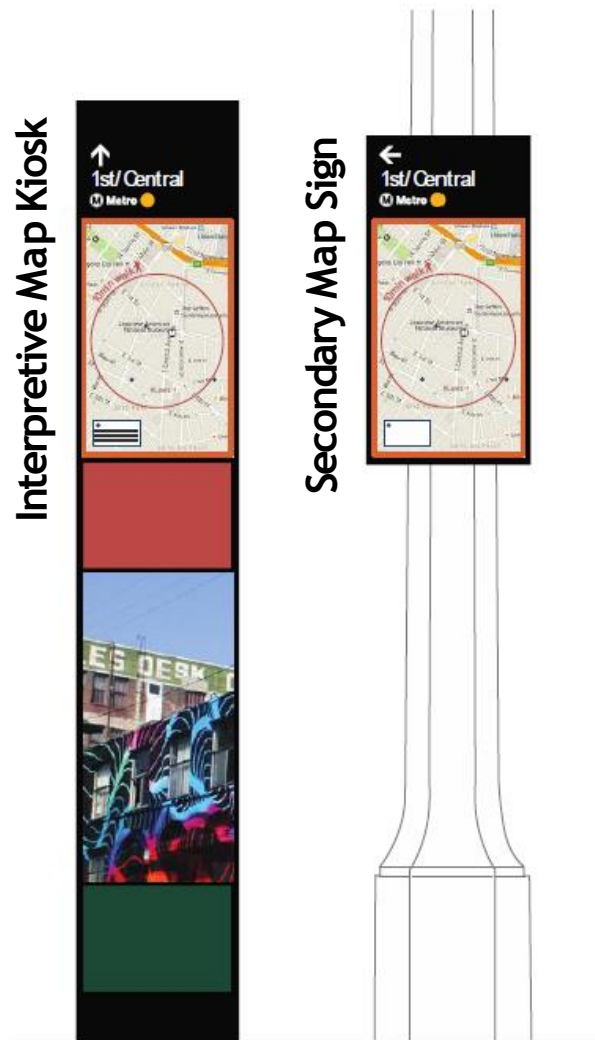
# New ADA Curb Ramp Installations - Completed



Center St / Jackson St



# Wayfinding Signage Design



## Interpretive Map Kiosks

- > 10 kiosks: (8) Little Tokyo (2) Arts District
- > Dimensions: 6'8" x 1'2" x 8"
- > Eight static graphic panels per kiosk, may vary per location
- > Installation on city sidewalk

## Secondary Map Signs

- > 23 signs: (18) Little Tokyo (5) Arts District
- > Dimensions: 2'4" x 1'2" Sign
- > Installation on existing street poles

## Signage Design

- > Panel content completed
- > Anti-graffiti coating



*\*Graphic Design subject to community input*

# Segment 2: Alameda Esplanade



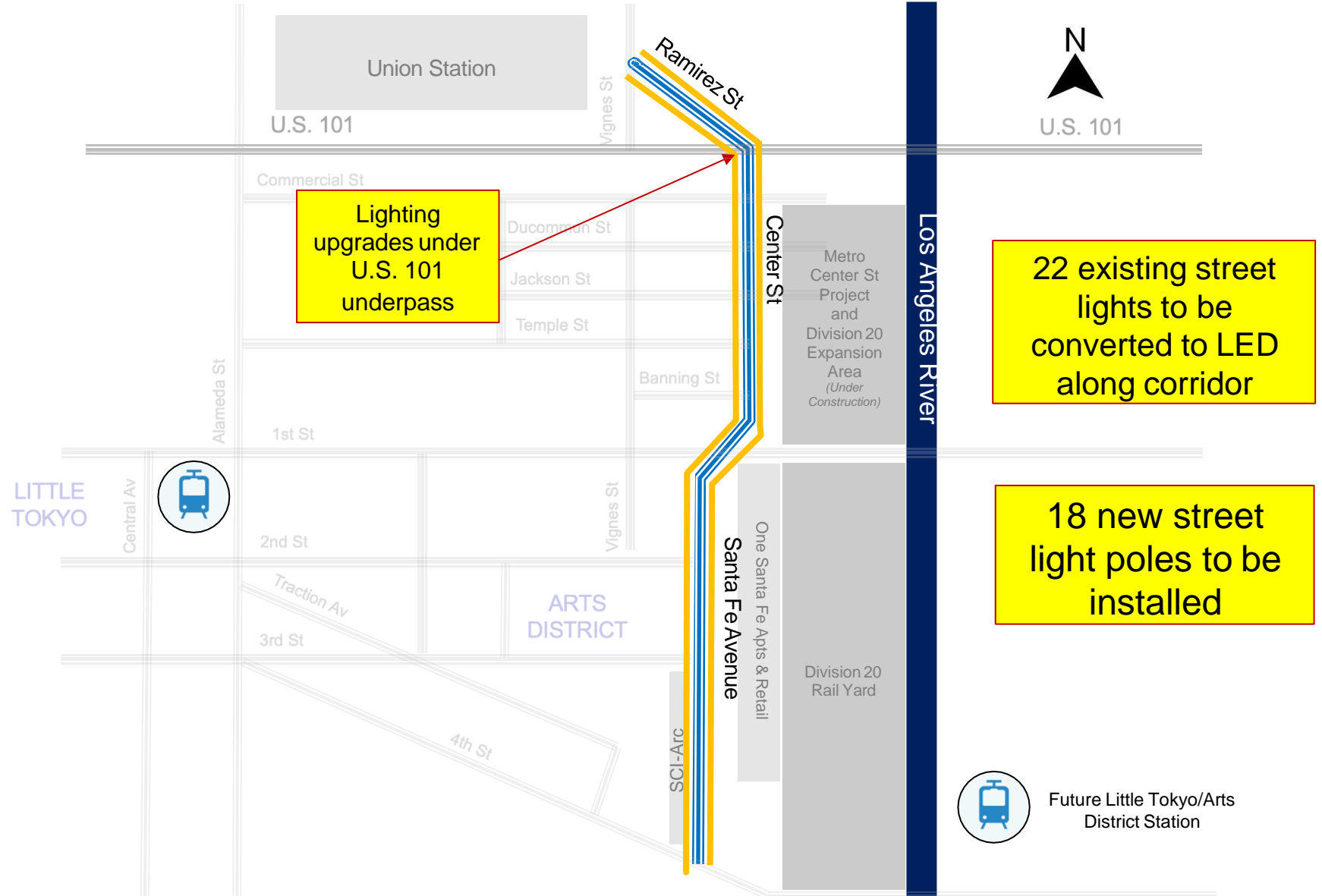
Alameda St at 1st St, looking north

# Segment 7: Santa Fe Spine to Arts District



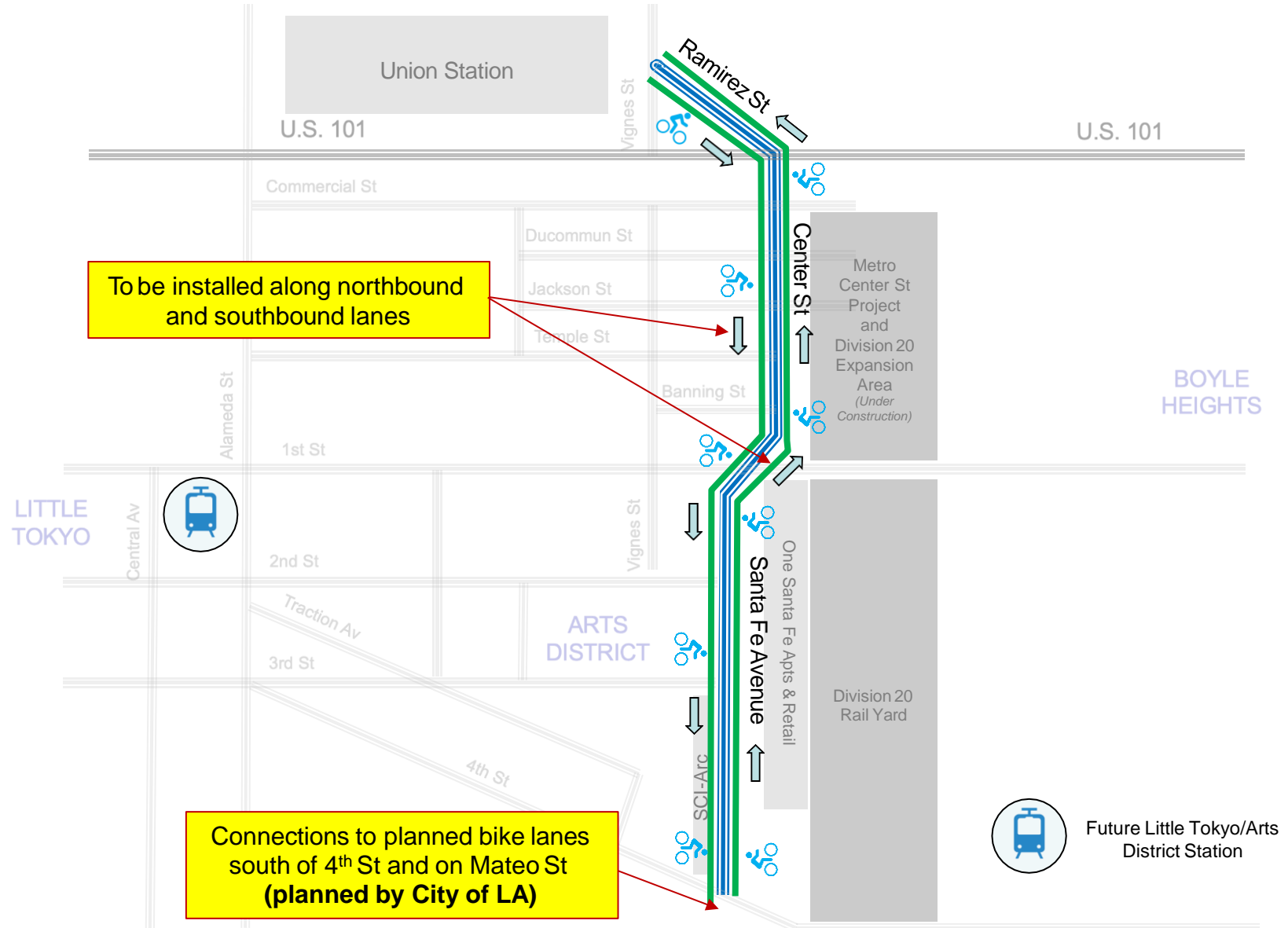
Santa Fe Av at 3rd St, looking south

# Segment 7: Santa Fe Spine to Arts District Street Light Improvements & Upgrades



Future Little Tokyo/Arts District Station

# Segment 7: Santa Fe Spine - Arts District Class II Bike Lanes

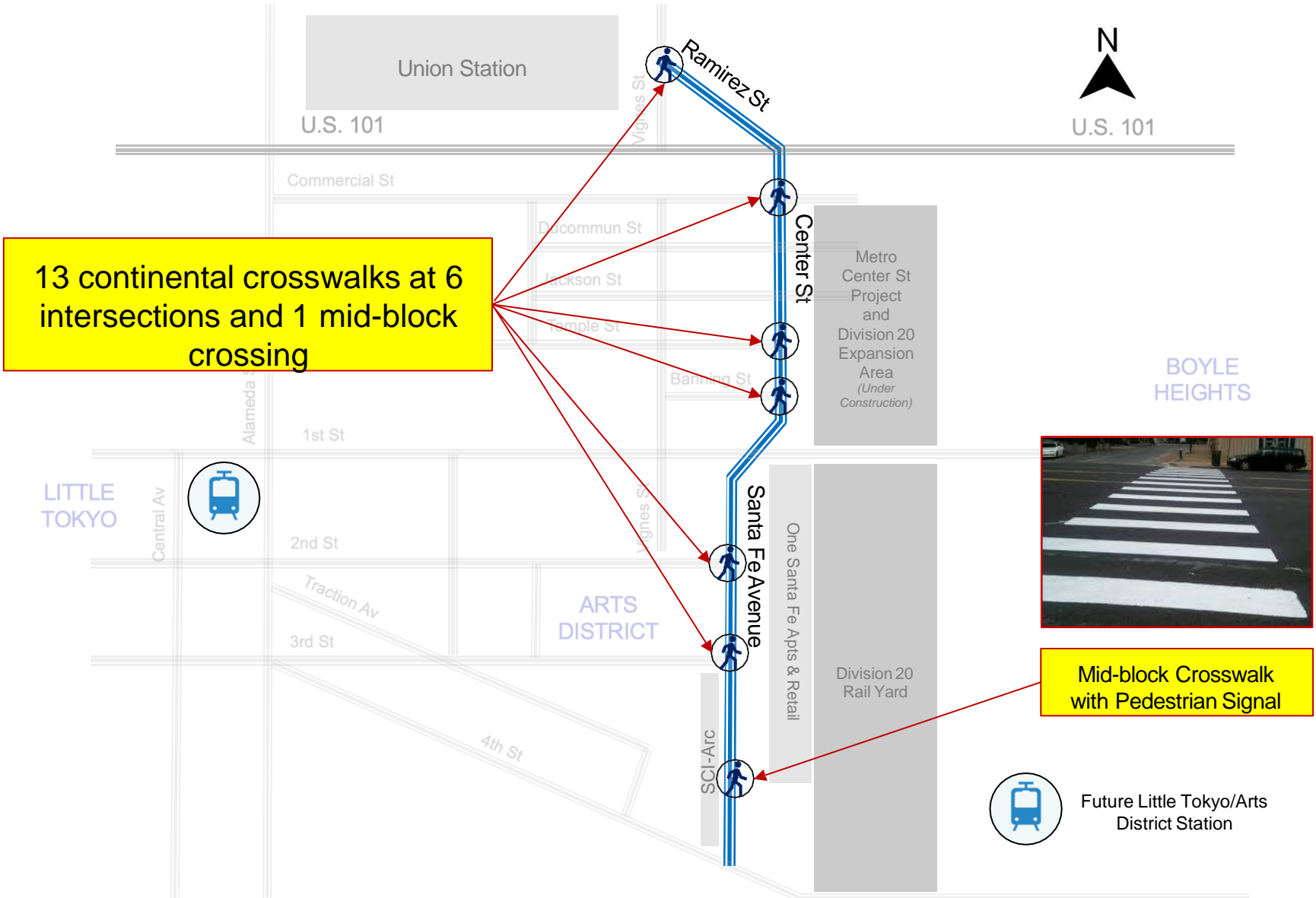


To be installed along northbound and southbound lanes

Connections to planned bike lanes south of 4<sup>th</sup> St and on Mateo St (planned by City of LA)



# Segment 7: Santa Fe Spine - Arts District Crosswalk Improvements



# Track Removal Work

Intersection Closure: Center St/ Santa Fe Av and Banning St

- > 24-hour a day, 7-days a week street closure
- > Proposed start date: Monday, July 25, 2022
- > Proposed end date: Monday, August 8, 2022
- > Hours of Construction: 8am to 6pm, weekdays.
- > Saturday, as needed, for striping and slurry seal work.



# Project Timeline

## Arts District

---

July/August 2022

- Street light pole installations
  - 2 near Center St / Jackson St
  - 1 near Center St / Ducommun St
- Center St/Santa Fe Av Spine Slurry Seal and Striping for Bike Lanes (Class II)
- Pedestrian Light at Mid-block crossing activation

## Little Tokyo

---

July/August 2022

- Concrete Restoration
  - Sidewalk panels Los Angeles St (westside) between 1<sup>st</sup> and 2<sup>nd</sup>
- Bike Lane Installations Los Angeles St between 1<sup>st</sup> St and 2<sup>nd</sup> St (Class II)
- Moon bench installation

August/ September 2022

- Hashimoto Plaza/Azusa St

Wayfinding Signage Installation in Arts District and Little Tokyo

- TBD to coincide with station opening



**Alameda Esplanade** - Anticipated completion by end of December 2022



# Stay Connected



213.922.1111



centrallaprojects@metro.net



[www.metro.net/eastsideaccess](http://www.metro.net/eastsideaccess)



Questions?





# Metro Center Project



# Meet the Team

## Program Management

**Jeanet Owens**

Project Executive, Metro

**Aston Greene**

EO, System Security & Law  
Enforcement

**Vincent Chio**

Project Manager, Metro

**Sheida Roghani**

Project Manager, Construction Support

## Amoroso – Contractor

**Nathan Berkey**

Project Manager, Amoroso

## Community Relations

**Olga Arroyo**

Manager

**Katrice Candler**

Principal Community Relations  
Officer

## Art & Design

**Mayen Alcantara**

Sr. Manager

**Allison Porterfield**

Sr. Specialist



# Metro Center Project Overview and Purpose

- > The Metro Center Project is an essential and secured facility that support the entire Metro Bus and Rail systems across 88 cities in LA County including expansions in Measure R and Measure M projects.
- > A 26,000-square-foot one-story building, with a second-story option to be built in the future, slated to open in 2023.



Draft – Subject to Change

# Sustainability LEED Gold Certification

- > For a building with over 200 personnel, only 53 parking spaces (including 10 with electric vehicle charging) are provided on-site as Metro intends to shuttle most of the employees between Union Station and Metro Center Project with service running every 13 minutes.
- > On-site Bike racks and new bike lane on Center Street will promoting walkability
- > LED light fixtures and other energy efficiency measures
- > Drought tolerant and water efficient landscaping and use of ultra-low flow fixtures throughout the building
- > Low-impact development (LID) measures including an underground cistern for reuse of rainwater.
- > Use of recycled wood and dedicated recycling area for collection and storage of recyclables



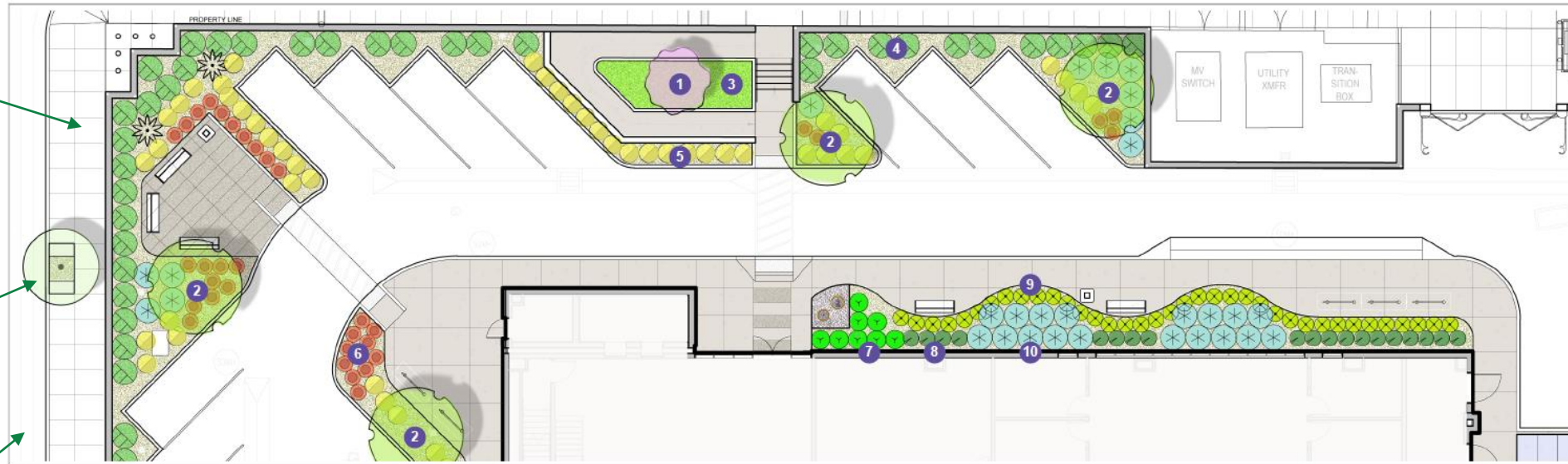
# Landscape and Streetscape Overview

Proposed 9.5-foot-wide sidewalk with pedestrian lights

Center Street

5 new street trees ("London Plane")

New Bike Lane



1 Merlot redbud (15-20 ft tall x wide, blooms in spring)  
*Cercis canadensis 'Merlot'*



2 Desert museum palo verde (20-25 ft tall x wide, blooms spring & sometimes summer)  
*Parkinsonia x 'Desert Museum'*



3 European gray sedge  
*Carex divisa*



4 Coral glow texas yucca (along fence)  
*Hesperaloe parviflora 'Coral Glow'*



6 Coral aloe  
*Aloe striata*



7 Cape rush  
*Chondropetalum tectorum*



8 White-striped sansevieria  
*Sansevieria 'Bartel's Sensation'*



9 Aloe vera



10 Variegated fox-tail agave  
*Agave attenuata 'Variegata'*

NORTH SIDE  
PLANTING PLAN  
SCALE: 1/8" = 1' - 0"  
0 4 8 16 ft



Draft – Subject to Change

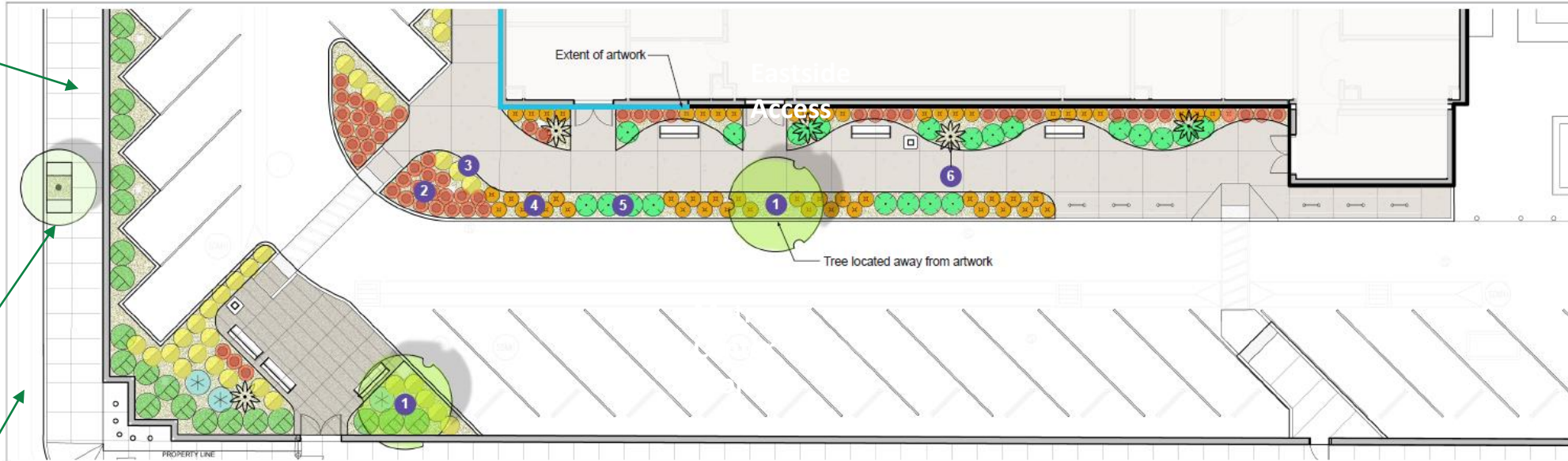
# Landscape and Streetscape Overview - 2

Proposed 9.5-foot-wide sidewalk with pedestrian lights

Center Street

5 new street trees ("London Plane")

New Bike Lane



1 Desert museum palo verde (20-25 ft tall x wide, blooms spring & sometimes summer)  
*Parkinsonia x 'Desert Museum'*



2 Coral aloe  
*Aloe striata*



3 Orange-stalked bulbine  
*Bulbine frutescens 'Orange'*



4 Safari aloe  
*Aloe 'Andora'*



5 Blue glow agave  
*Agave 'Blue Glow'*



6 Tree aloe  
*Aloe barberae*



SOUTH SIDE PLANTING PLAN

SCALE: 1/8" = 1' - 0"



Draft – Subject to Change



# Metro Center Project – Exterior Renderings

Draft – Subject to Change



# Metro Center Project – Exterior Renderings

Draft – Subject to Change



# Metro Center Project – Exterior Renderings



Draft – Subject to Change

# Temporary Construction Banner Artwork: Selection Process, Community Engagement & Design



JACCC x SLT x Metro Art present:



## EMPTY YOUR CUP: ART ACTIVITIES

by KUNIHARU YOSHIDA & SUSU ATTAR

**EXPAND YOUR IMAGINATION,  
CONNECT OUR COMMUNITIES**

FREE PRINTABLE ART PACKET  
FOR ALL AGES!



The MCP project includes a percent for art artwork on the building and temporary art on the construction banners.



# Temporary Construction Banner Artwork: Design Renderings



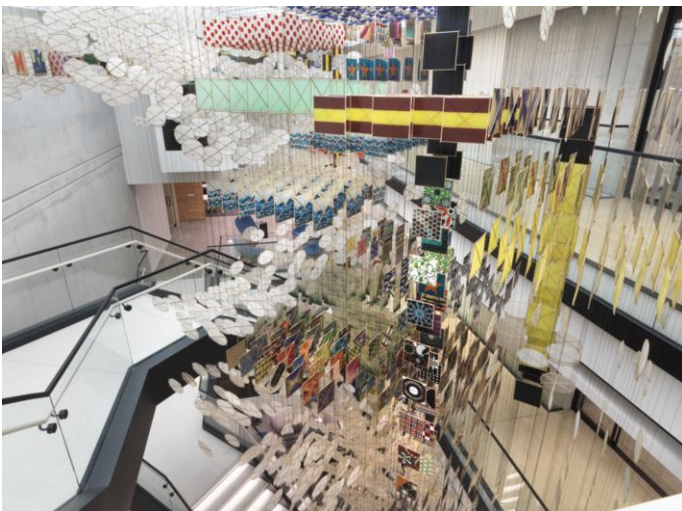
**Banner 1 rendering of view looking southeast on Center Street**



# Metro Center Project Building Artwork



The artist, Jacob Hashimoto

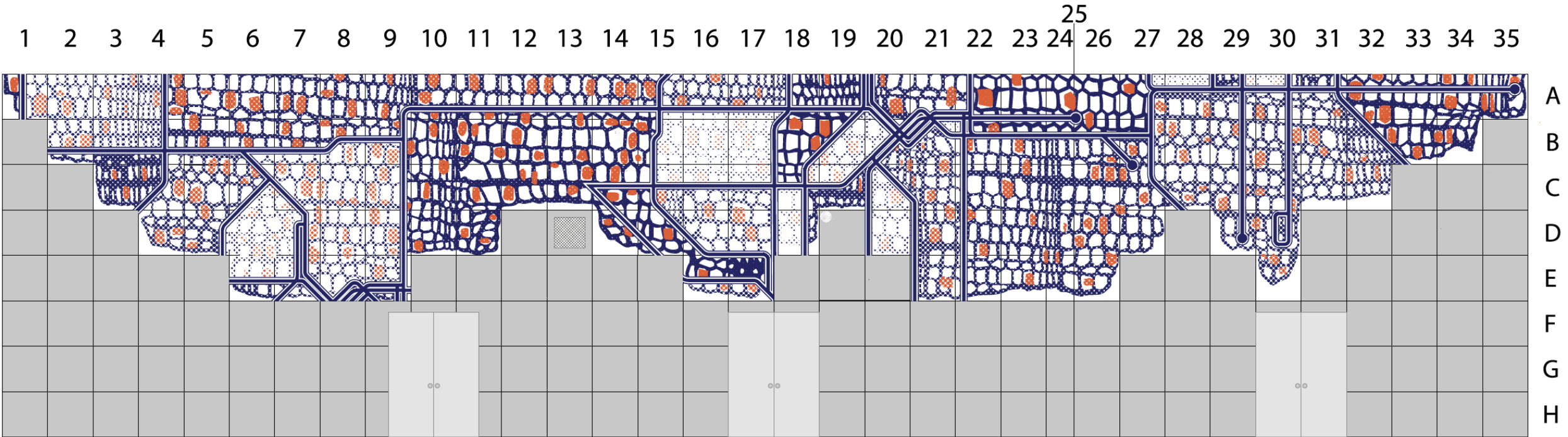


Examples of Jacob Hashimoto's various projects

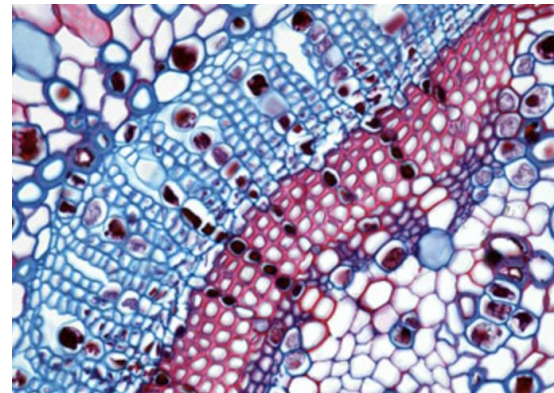


- Meet the artist and community workshops occurred at the LA Kretz Innovation Campus in 2017.
- The artist, Jacob Hashimoto, was selected via a process that included expert advisors rooted in the neighboring communities including the Arts District.
- Jacob Hashimoto's internationally recognized artwork is included in public and private collections including the LA County Museum of Art (LACMA).
- The main artwork elements will face Center Street with a segment wrapping around the corner facing Jackson Street.
- Jacob Hashimoto is developing the artwork design and has been coordinating with the project team throughout the project development.

# Building Artwork: Design Renderings



Preliminary artwork rendering for MCP



Methuselah Tree (L), Cellular Structure (R)

- Preliminary rendering of public artwork on the Southwest building façade – view from Center and Jackson Street
- Inspired by the cellular structure of the Methuselah tree, native to California and Nevada and which at 4,789 years old is thought to be one of the oldest known living organisms in the world
- References to Metro's bus and light rail network are incorporated in the artwork design





East sidewalk closure



West sidewalk open



**Jackson St**

# Upcoming Work

- **Sidewalk closure on east sidewalk of Center Street between Jackson St. and Ducommun St on or after August 31, 2022**
  - Traffic control plans approved by City of Los Angeles
  - Coordination with Division 20 project and Eastside Access Improvement projects
- **Temporary construction fence artwork installation in September 2022**

# Stay Connected



213.922.1111



centrallaprojects@metro.net



[www.metro.net/centerproject](http://www.metro.net/centerproject)



# Questions?

# Next stop: improving rail service.

**DIVISION 20 PORTAL WIDENING AND TURNBACK FACILITY**



**Metro**

**Construction Update**

Division 20

July 21, 2022

# Meet the Team

## **Community Relations**

- > **Marlon Walker**, Manager
- > **Ned Racine**, Principal Community Relations Officer
- > **Katrice Candler**, New Media Officer
- > **Matt Gallagher, PE** , Project Manager

## **Contractor**

- > **Joanna Amador-Dempsey**, Construction Communications Coordinator



WALER & STRUTS

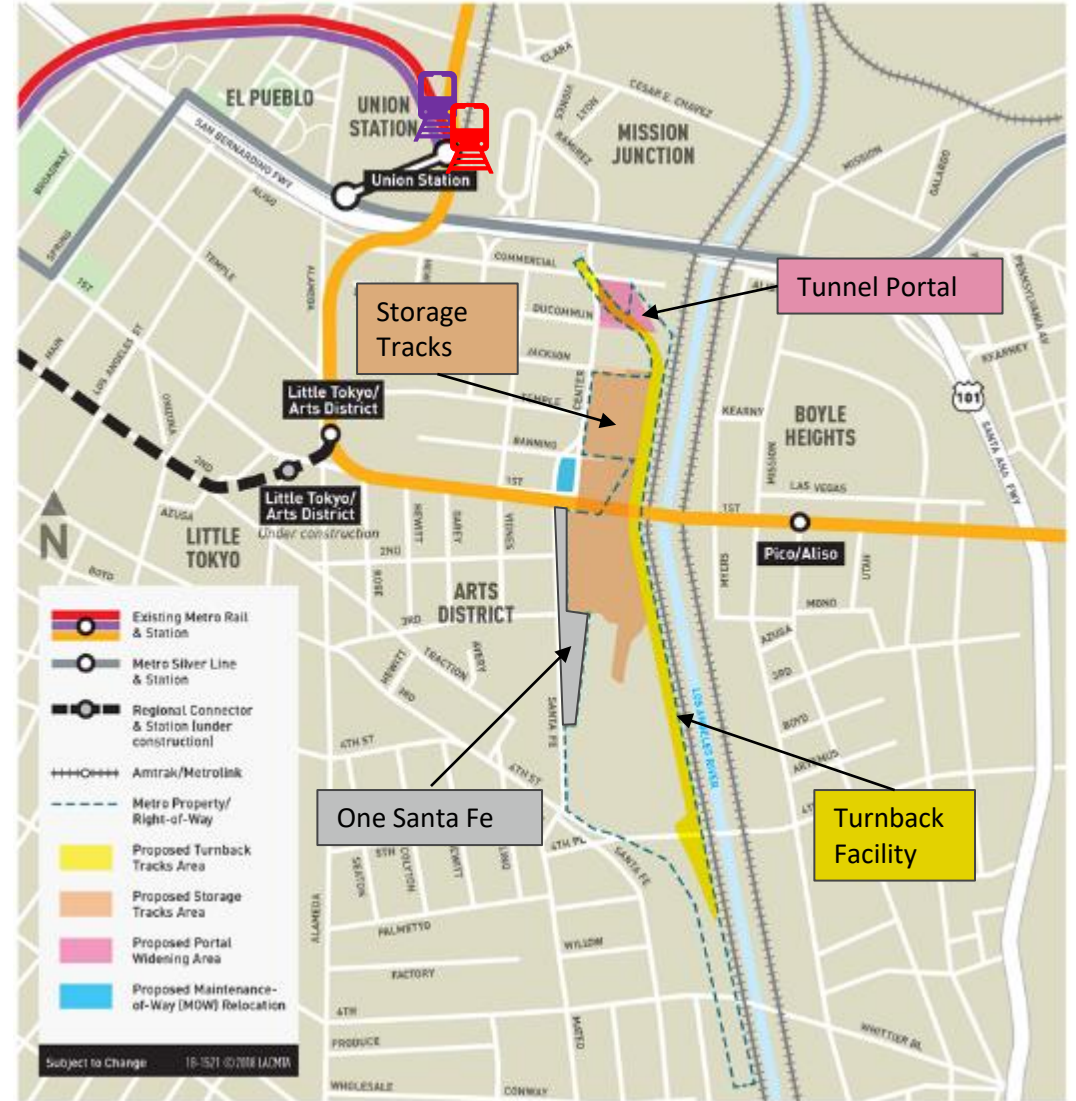


LifeStorage

COMMERCIAL ST

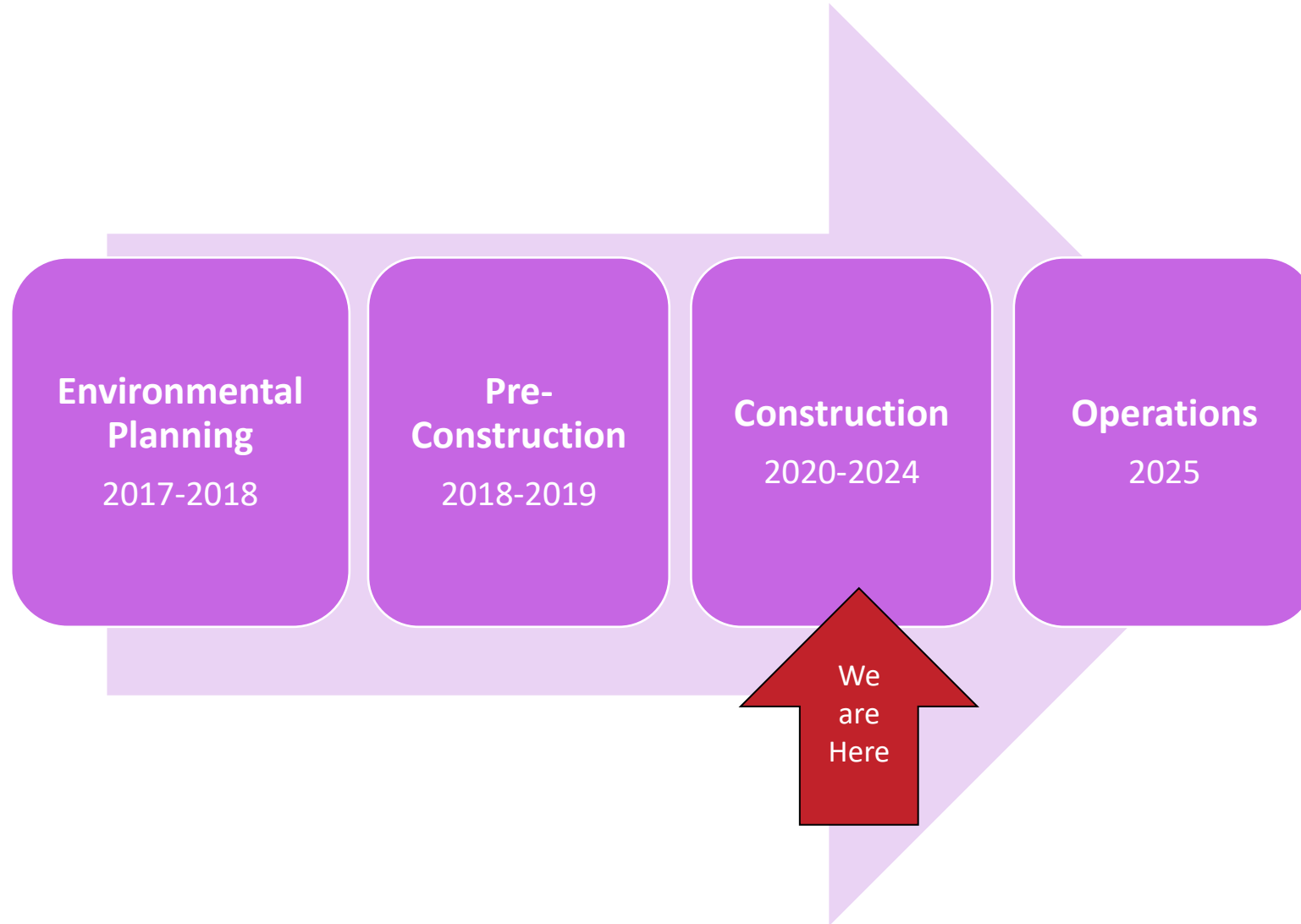
# Project Overview

- Improvements to Metro's Division 20 Rail Yard will provide faster and more frequent service on the Metro Red and Purple (B and D) Lines
- Improvements include
  - Widening of heavy rail portal
  - New turnback facility
  - Expansion, reconfiguration of rail storage tracks



Exact location of turnback tracks and storage tracks to be determined.

# Project Timeline





# Current Work— North Yard

Adding and moving utilities supports additional tracks for more rail car storage.

> Examples of utilities:

- Domestic water line under Banning St.
- Fire water lines.
- Lighting duct banks.
- Main storm drain.
- Underdrain to assist with water runoff.
- Installation of train tracks.
- Fence installation in the north yard



Access roads and drains have been added to the north yard.

# Current Work— Portal Area

## Portal Widening

Once the portal is expanded from two to four tracks, the turnaround time for subway cars from the rail yard to Union Station will shrink.



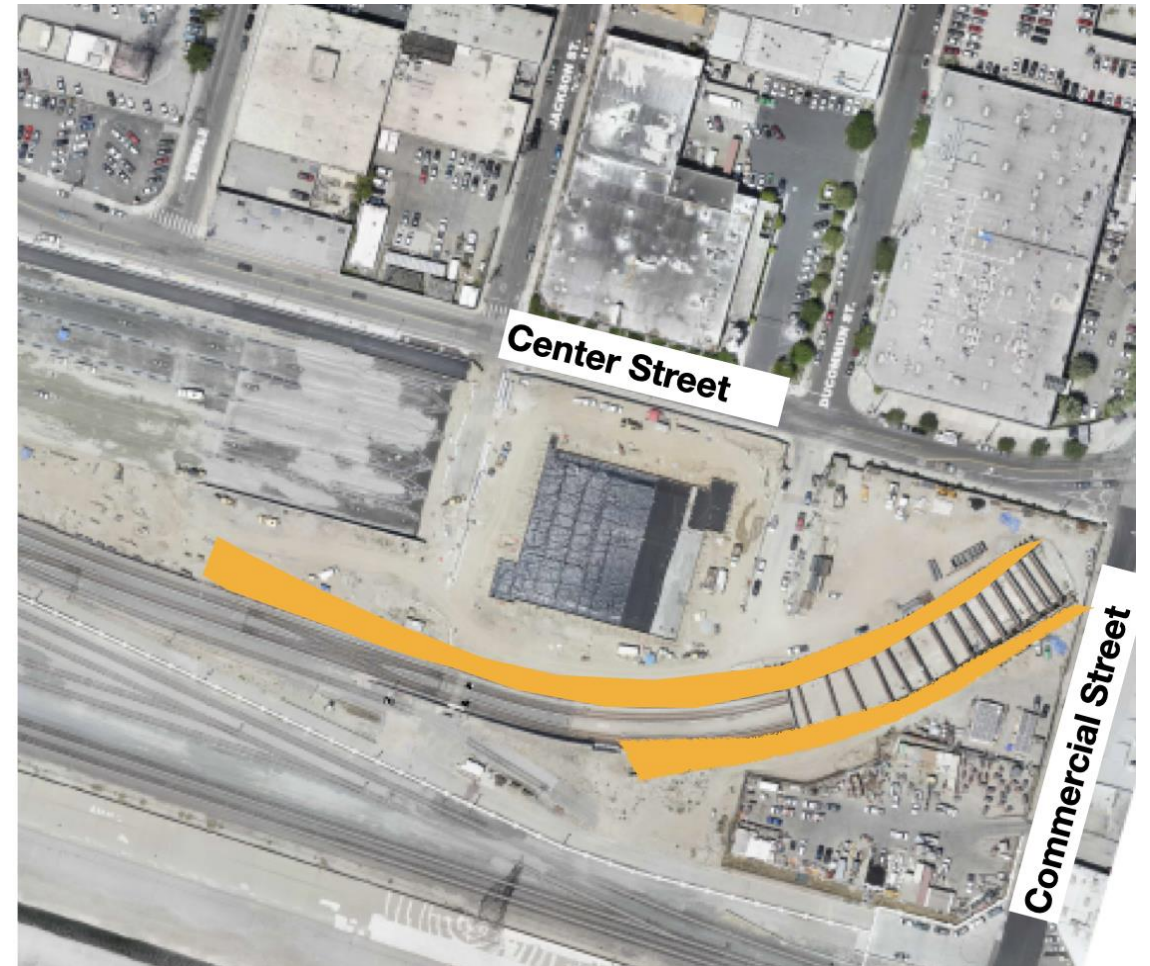
The concrete wall to the right will soon be demolished. Once the wall disappears, two additional tracks will be added to the right, doubling the underground rail lines to Union Station.

# Current Work— Portal Area (Cont.)

Before Construction



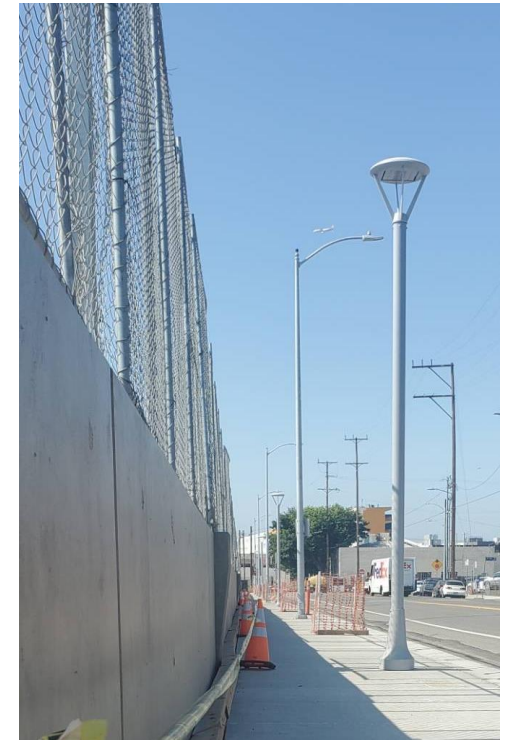
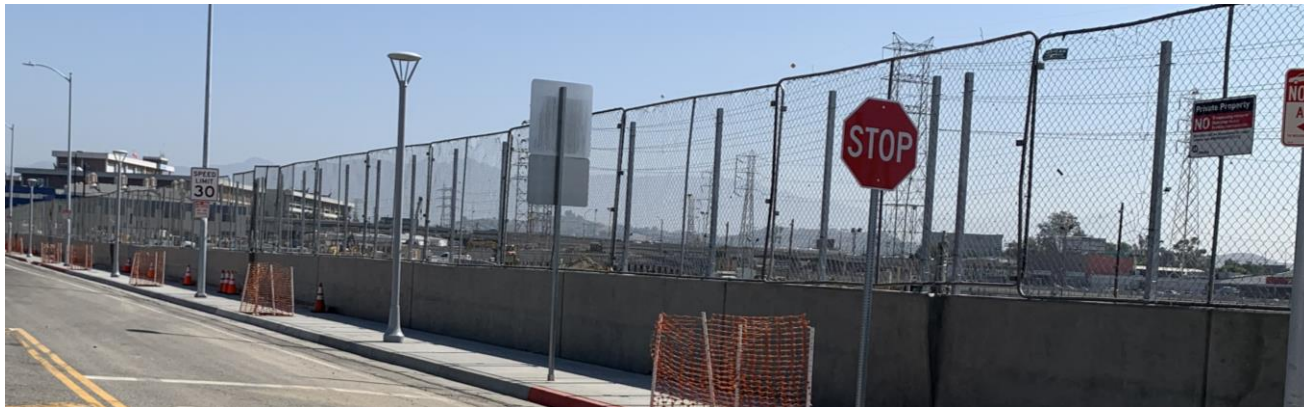
Current Area



The orange lines indicate where the portal will be widened.

# Current Work— Center St

- Eleven light poles were installed along the east side of Center St.
- Work continues along east Center St to install utilities, permanent fence, sprinkler system, and planter wells.
- East sidewalk will remain closed until workers complete fence installation in the north yard.
- Construction on the east sidewalk (right) has been completed.



The east side sidewalk (left) along Center St looking northeast. The new light poles (right).

# Current Work— 1st Street Bridge

## 1st Street Bridge Modifications

These modifications provide more structural support, allowing bents to be removed, enabling more tracks to run under the bridge. The modification activities continue through 2022.

This photo shows new girders installed and joined to allow bent 16 to be removed.



Concrete infill have been completed for bents 15 and 16. All falsework here has been removed.

# Current Work- South Yard

Excavation and utility work continues.

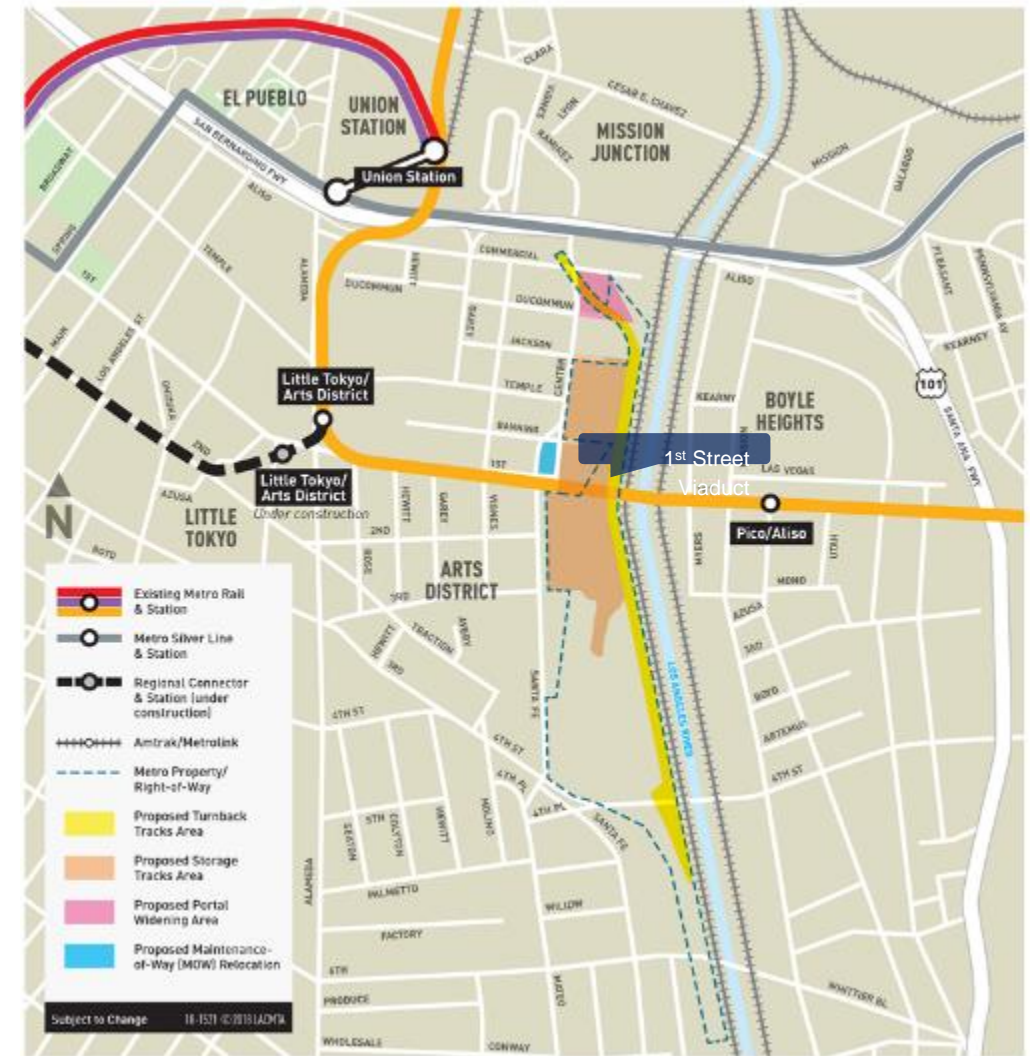


This photo looks southwest and captures work near the traction power substation (TPSS). Access to the TPSS will be via the concrete slab and stairs.

# Upcoming Work

*\*Work is subject to change*

- Begin dewatering at the portal.
- Begin demolition of Bent 16 on 1st Street Bridge
- Construct portal foundation and walls.
- Install track.
- Excavate and demolish in the south yard.



*Exact location of turnback tracks and storage tracks to be determined.*

# Construction Mitigations

## Best practices on the Division 20 construction site

- Equipment and staging areas shall be located away from noise-sensitive receivers, and noise barriers should be used when possible.
- Minimize high-impact devices such as jackhammers and hoe rams.
- Utilize lower impact devices such as concrete crushers and pavement saws.
- Refrain from idling equipment.
- Use frequent watering to reduce dust.



# End-of-Project Mitigations

- > On the east side of Center Street from Jackson Street to Banning Street, the Portal Widening Project will provide:
  - Street lighting
  - Pedestrian lighting
  - Tree wells
  - Vines
  - The Arts District reviewed these streetscape elements
  
- > The Portal Widening Project will provide a 10-foot-wide sidewalk on the west side of Center St from East Temple St to Jackson St and will provide an 8-foot-wide sidewalk on the east side from Jackson St to Banning St

# Stay Connected



213.922.6934



div20portalwidening@metro.net



[www.metro.net/divison20](http://www.metro.net/divison20)

Questions?

# Central Los Angeles Projects: What's Next

- > Next Meeting: September 22, 2022
- > Let us know your thoughts
- > [Survey](#)



[Centrallaprojects@metro.net](mailto:Centrallaprojects@metro.net)



213-922-1111

