

# We Will Begin Soon



This conversation will be recorded and shared afterwards online and via email



You can submit your questions using the Q&A feature.

# Welcome and Agenda

Thank you for joining us!

Agency Updates

– Olga Arroyo

Central LA Region

– Olga Arroyo

Regional Connector Transit Project

– Wendy Cardona and Lorena Hernandez

East Side Access Improvement Project

– Katrice Candler

Center St Project

– Katrice Candler

Division 20

– Ned Racine

# Agency Updates

# Agency Updates

## Bus fare collection and front door boarding resumed on Jan. 10, 2022

### Discounted Prices

- **Six months of half price passes for all riders!**
- 1-Day, 7-Day and 30-Day passes at half-price savings.
  - \$3.50 for a day pass, \$12.50 for a weekly pass and \$50 for a 30-day pass if you are not enrolled in a discounted program.
- The fares will be available on TAP vending machines, [taptogo.net](http://taptogo.net) and at Metro Customer Centers for purchase until July 20, 2022.

### Low-Income Fare Is Easy (LIFE) Program

- Six months of discounted LIFE fares.
  - **New** LIFE riders will get **90 days of free rides**, when fare collection restarted.
  - Pay \$26 for a 30-day pass (regularly \$76).
  - Pay \$6.50 for a 7-day pass (regularly \$19.50).
  - To sign up for the LIFE Program, visit [www.metro.net/riding/life/](http://www.metro.net/riding/life/)

### Metro Budget Development Comment Box

- **Help us shape our budget. Tell us your Metro priorities for Fiscal Year 2023.**
- [Metro's Fiscal Year 2022 budget](#) focuses on restoring service to pre-pandemic levels. We're making progress in creating more transportation options for everyone, but there is still more to do. We're listening to you. Tell us what more you'd like to see from us.
- **Provide your input on Metro's budget** [via our online tool](#).

# Central LA Project Team

Centralized communications approach with the community and projects

Core community relations team

Assist with construction related comments and concerns

Serve as a conduit of community priorities within Metro

Five Projects:  
Div. 20 \* EAIP \* Link US \* Metro Center Project \*  
Regional Connector

# Central Los Angeles Project Team

Jeanmarie Hance, Manager

Regional Connector  
EAIP



Jeanmarie Hance  
Katrice Candler, PCRO/NMO

Olga Arroyo, Manager

Regional Connector



Lorena Hernandez, PCRO  
Wendy Cardona, CRO/NMO

Metro Center Project



Katrice Candler

Division 20



Ned Racine, PCRO

Link US



Olga Arroyo

# Central Los Angeles Projects

Project	Status	Projected Completion
Regional Connector	Construction	2022
Eastside Access Improvements Project	Construction	2022
Center Project	Construction	2023
Div. 20 Portal Widening & Turnback Facility	Construction	2023
Link US Phase A	Design	2024* (*design)

# Central Los Angeles Projects: What's Next

- > Next Meeting: Thursday, March 17, 2022
- > Let us know your thoughts
- > [Survey](#)



**213-922-1111**



**Centrallaprojects@metro.net**



# Next stop: the missing link.

REGIONAL CONNECTOR TRANSIT PROJECT

Metro Rail

Go Metro

M  
Metro  
Welcome Aboard  
Bienvenidos



Regional Connector Transit Project Update

Central LA Region

Jan 19, 2022



# Introductions

# Regional Connector Project Team

## **Project Management:**

- Mat Antonelli
- Sy Morales
- Huburt Kang
- Johnny Truong
- Tung Vu

## **Community Relations:**





- Olga Arroyo
- Jeanmarie Hance
- Lorena Hernandez
- Wendy Cardona
- Ginny Brideau
- Jesus Galeno

## **Regional Connector Constructors:**

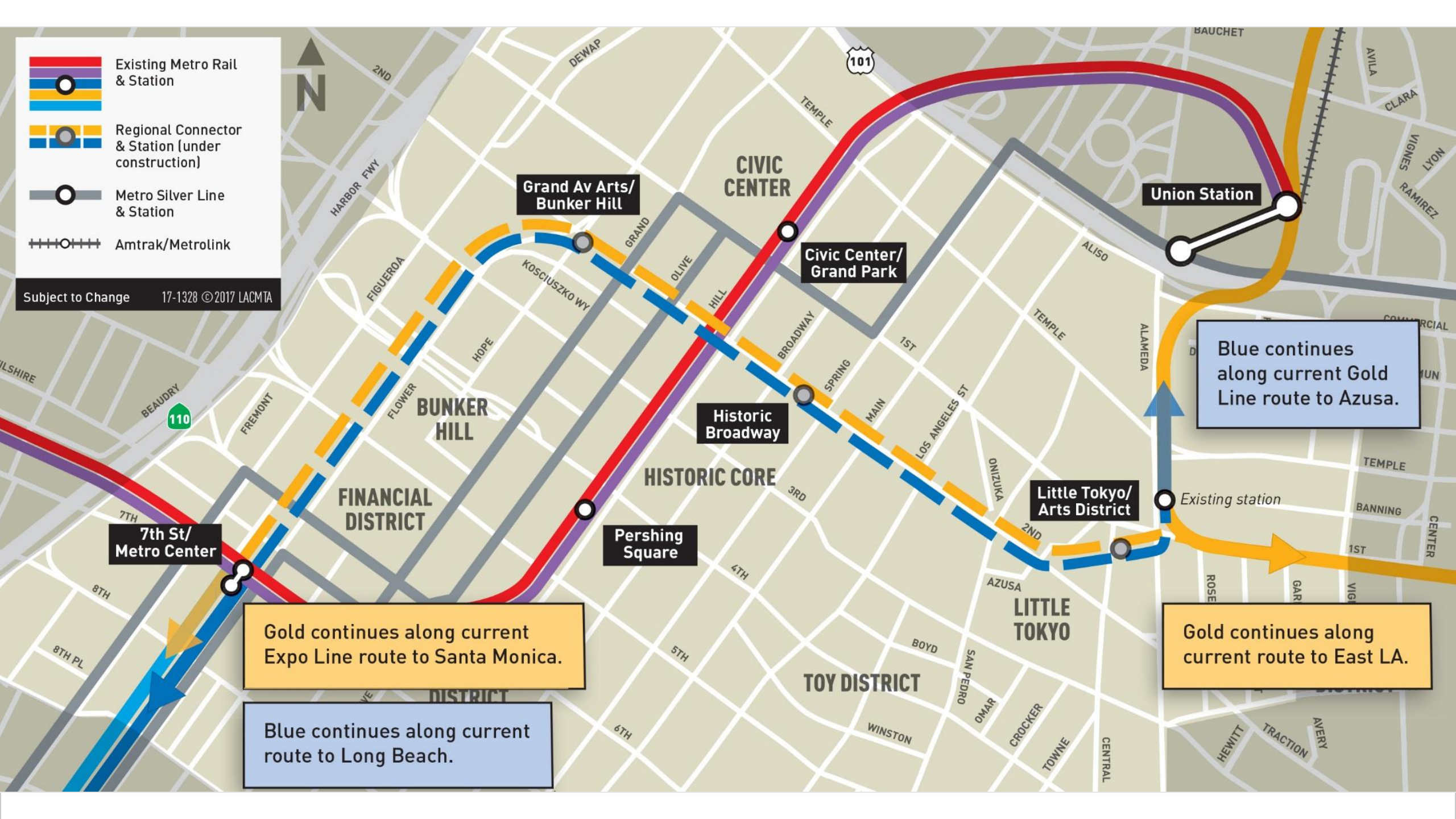
- Ivan Yee
- Philip Mateo

# Project Overview

- > 1.9-mile underground light-rail system
- > Three underground stations
  - > Little Tokyo/Arts District (1st St/Central Av)
  - > Historic Broadway (2nd St/Broadway)
  - > Grand Av Arts/Bunker Hill (2nd Pl/Hope St)
- > 90,000 daily passengers expected
- > Slated to open for rail passenger service in 2022

-  Existing Metro Rail & Station
-  Regional Connector & Station (under construction)
-  Metro Silver Line & Station
-  Amtrak/Metrolink

Subject to Change 17-1328 ©2017 LACMTA



**7th St/ Metro Center**

**Grand Av Arts/ Bunker Hill**

**Civic Center/ Grand Park**

**Union Station**

**Historic Broadway**

**Pershing Square**

**Little Tokyo/ Arts District**

Gold continues along current Expo Line route to Santa Monica.

Blue continues along current route to Long Beach.

Blue continues along current Gold Line route to Azusa.

Gold continues along current route to East LA.





Existing station

# Operational Plan

- > Board approved October 2020
- > Connect the L Line to the A and E Lines
- > One-seat ride between Azusa and Long Beach; East LA and Santa Monica



# Project Update Look Ahead

Activity	Little Tokyo/Arts District	Historic Broadway	Grand Av Arts/Bunker Hill	Flower St/Financial District
<b>Construction</b> > Stations > Tunnel box	Concludes 2022			
<b>Civil Restoration</b> > Tree replacement, lighting, sidewalks, final paving & striping, etc.	Concludes 2022			
<b>L Line (Gold) service interruption</b>  <b>7th St/Metro A &amp; E Lines service interruption (weekends)</b>	Concludes 2022	-	-	Thru end Early 2022
<b>Testing</b>	2022			
<b>Revenue Operations</b>	2022			

# Eat Shop Play

# Eat Shop Play

Eat Shop Play highlights local mom and pop businesses in Crenshaw and Inglewood, especially eateries and specialty businesses operating pick-up and delivery during the past months.

The Eat Shop Play DTLA and Little Tokyo programs continue supporting local businesses as construction progresses by promoting them through regular social media posts and newsletters to over 12,000 community members.



# Social Media Spotlights



Metro Regional Connector

January 13 at 12:00 PM · 🌐

Lemonade's always been the go-to way to cool down, except now [Lemonade LA](#) is a modern cafeteria serving seasonal California cuisine. Follow them online to learn more about their Bowl Tuesday promotion and try their delicious bowls, sandwiches, and handcrafted lemonades. [#EatShopPlay](#) [#DTLA](#)  
Support Local Businesses  
<https://bddy.me/3FkG4zH>



Metro Regional Connector

January 12 at 12:00 PM · 🌐

Beautiful, tasty, vegan. [Dōnatsu](#) - ドーナツ in Little Tokyo makes beautiful art pieces in the form of 16 flavors of donuts including exotic flavors like Matcha, Royal Dragon, and Crème Brulee. [#EatShopPlay](#) [#LittleTokyo](#)  
Support Local Businesses  
<https://bddy.me/3GpiPFZ>



# Newsletters



**Uptown Drug and Gift Shop (Flower District)**

With their large selection and excellent service, Uptown Drug and Gift Shop has all the last-minute gifts, party snacks, and medicine to get you through the holidays.

444 Flower St #100  
213.612.4300

[Learn More](#)



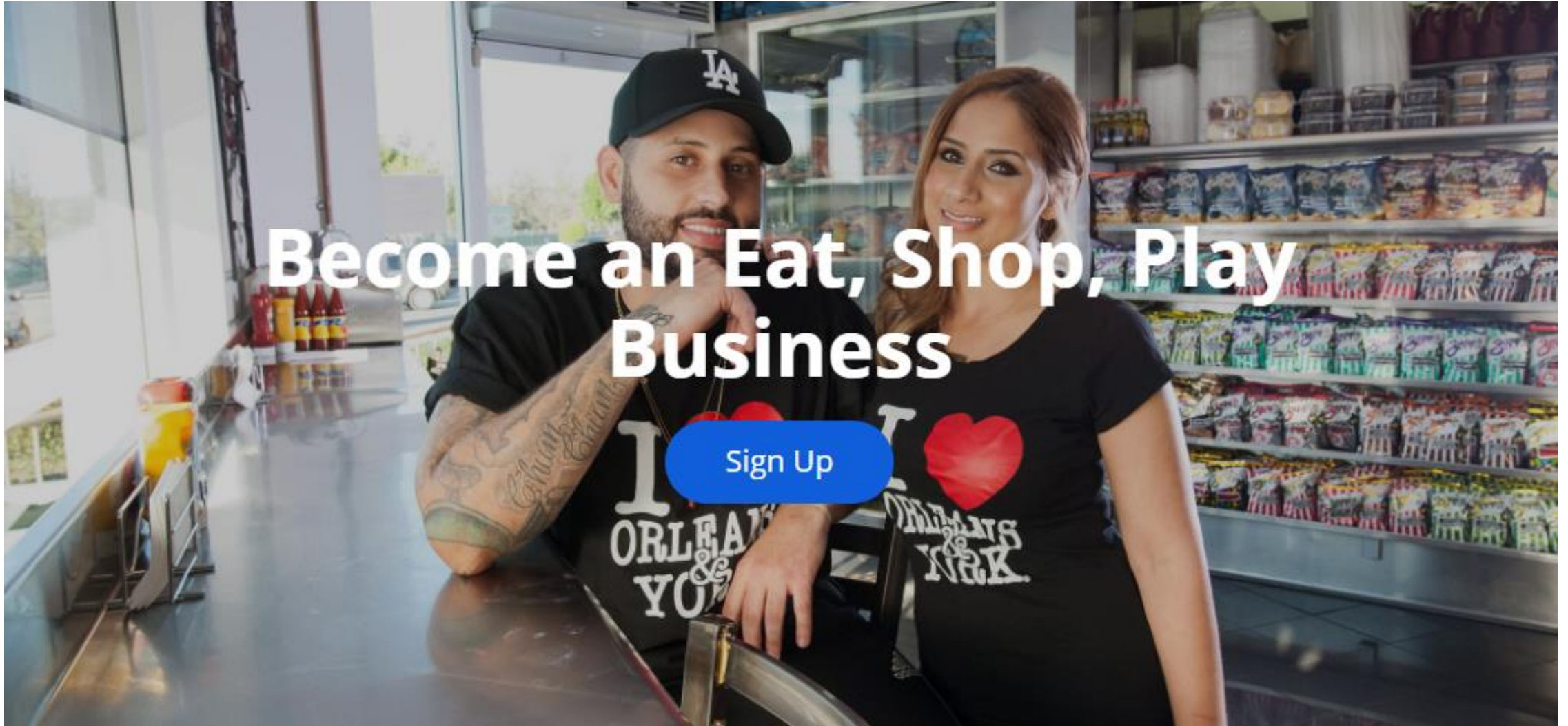
**Play- East West Players (Little Tokyo)**

Little Tokyo's East West Players is the nation's premier and longest-running Asian American theater, educating and entertaining our communities since 1956. Join the East West Players in welcoming their 56th season "Here. Us. Now!" this 2022 with four major productions.

120 Judge John Aiso St  
213.625.7000

[Learn More](#)

# More Information



# Station Renderings

# Little Tokyo/Arts District Station



An architectural rendering of the Historic Broadway Station, showing a modern transit hub with a glass-enclosed platform, escalators, and a colorful mural. The scene is populated with diverse figures of people, including a person with a stroller and an elderly person with a cane, to provide a sense of scale and activity. The station is situated on a city street with trees and a sidewalk.

# Historic Broadway Station

# Grand Av Arts/Bunker Hill Station

An architectural rendering of the Grand Av Arts/Bunker Hill Station. The central focus is a modern building with a white, textured facade and large glass panels. The glass panels are highlighted with a purple tint. The building is situated on a city street corner. To the left, a yellow bus is stopped at a curb. In the foreground, there are several trees with yellow and green foliage, and a few people walking on a paved sidewalk. To the right, a white van is driving on a road. In the background, there are other buildings, including a tall brick building and a modern building with a large, angular roof. The sky is a clear, light blue.

# Project Wide Station Work

# Canopy Delivery



# Canopy Installation



Little Tokyo Arts/District Station

# Elevator Installation



Historic Broadway Station

# Project Wide Civil Improvements

# Civil Improvements



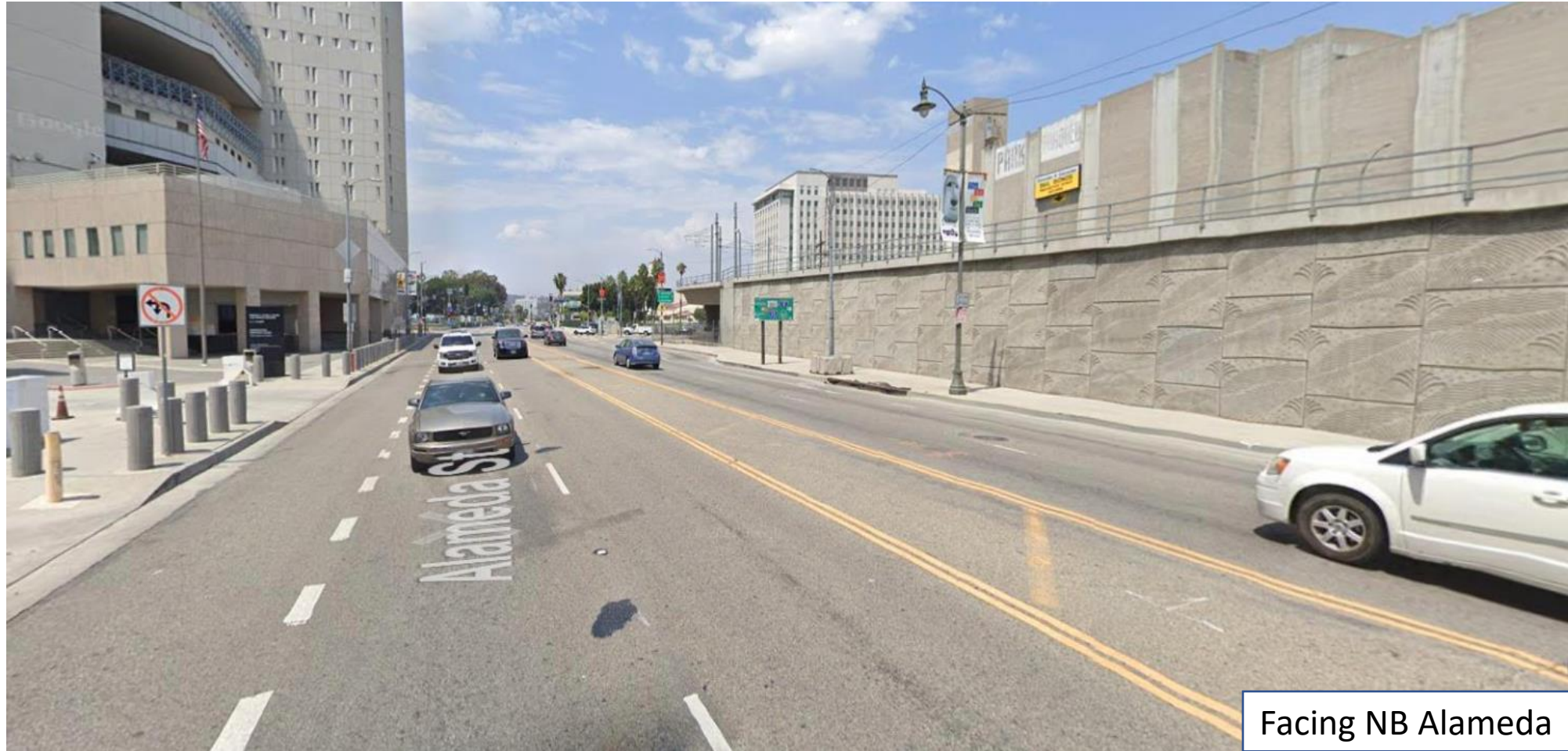
# K-Rail Extension: NB Alameda to Commercial

- As early as February 12, 2022-Summer 2022
- Pedestrian access will be maintained at intersection



# K-Rail Extension: NB Alameda to Commercial

- RCC will be the contractor for Alameda Esplanade
- Work maintained within K-rail limits



Facing NB Alameda

# Civil Improvements



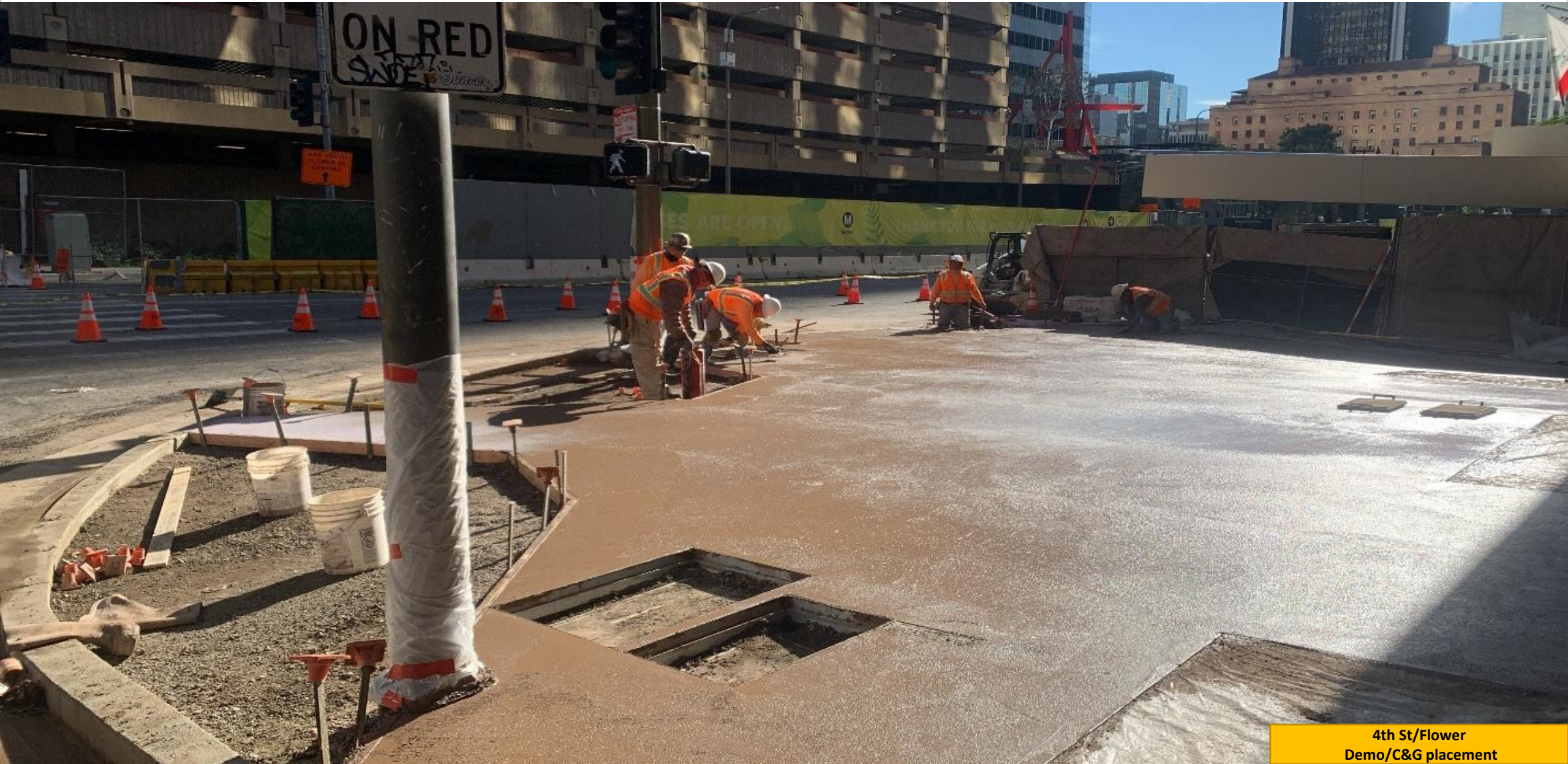
# Civil Improvements



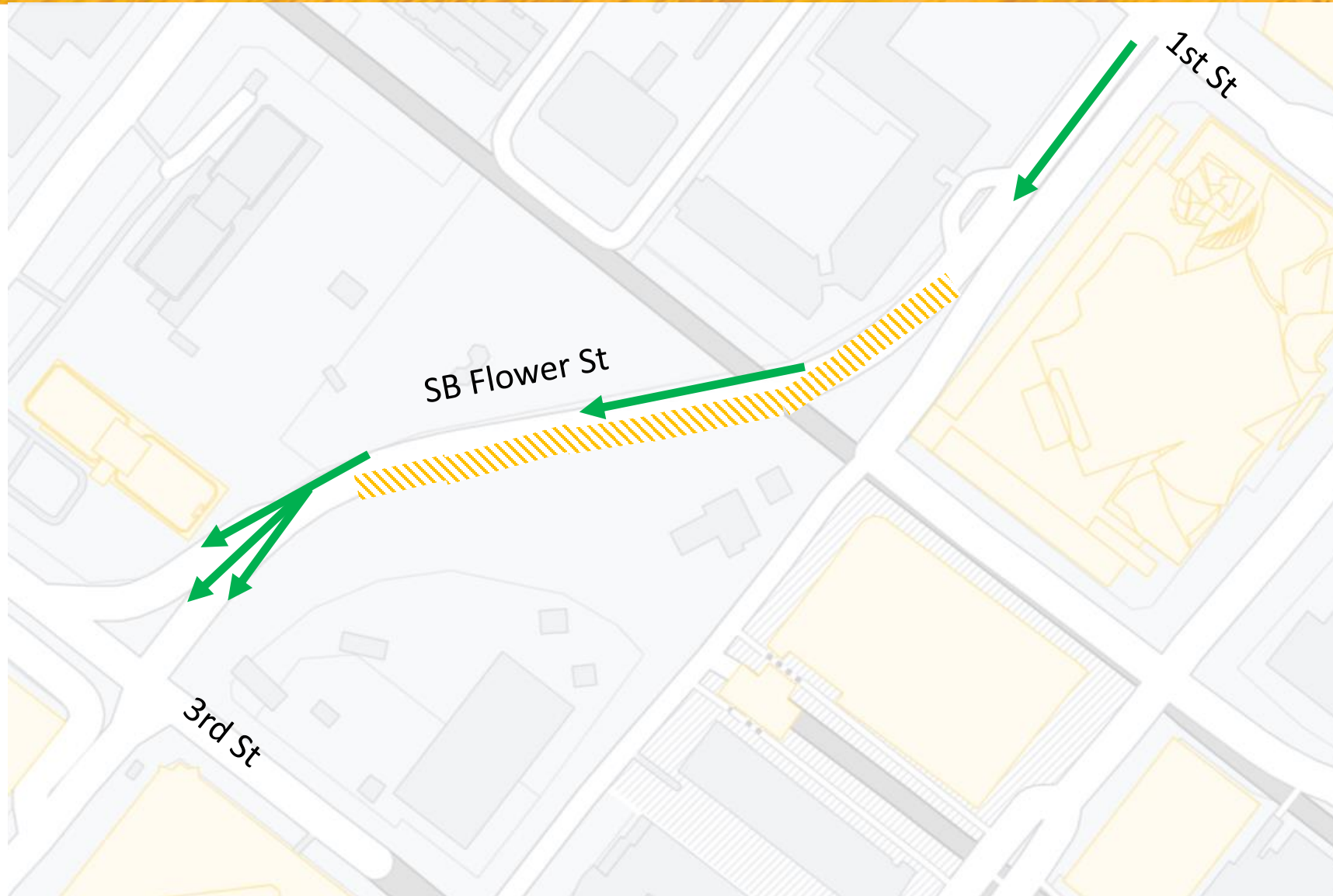
# Civil Improvements-Flower St



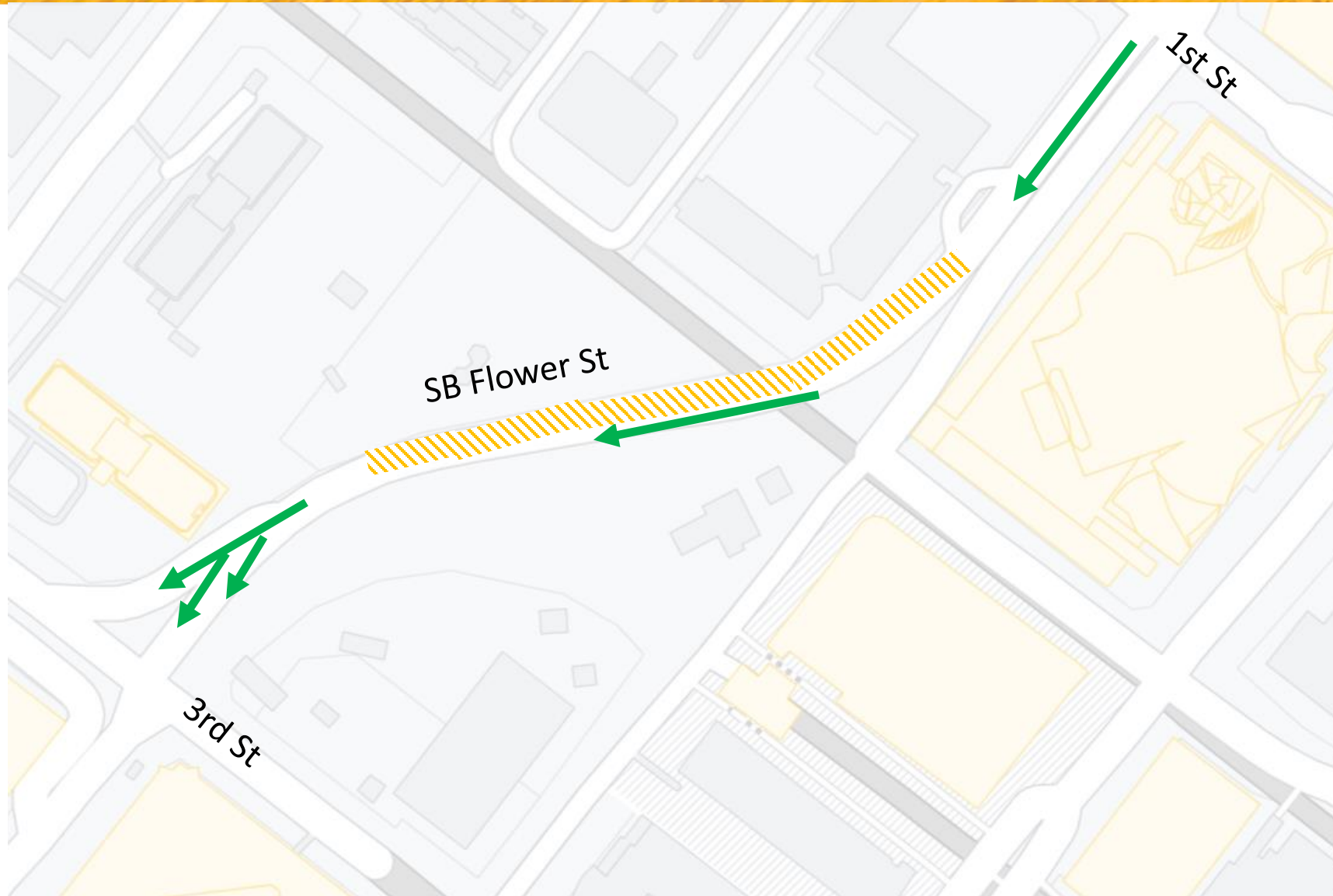
# Civil Improvements- Flower St



# Southbound Flower St Restoration: Phase 1



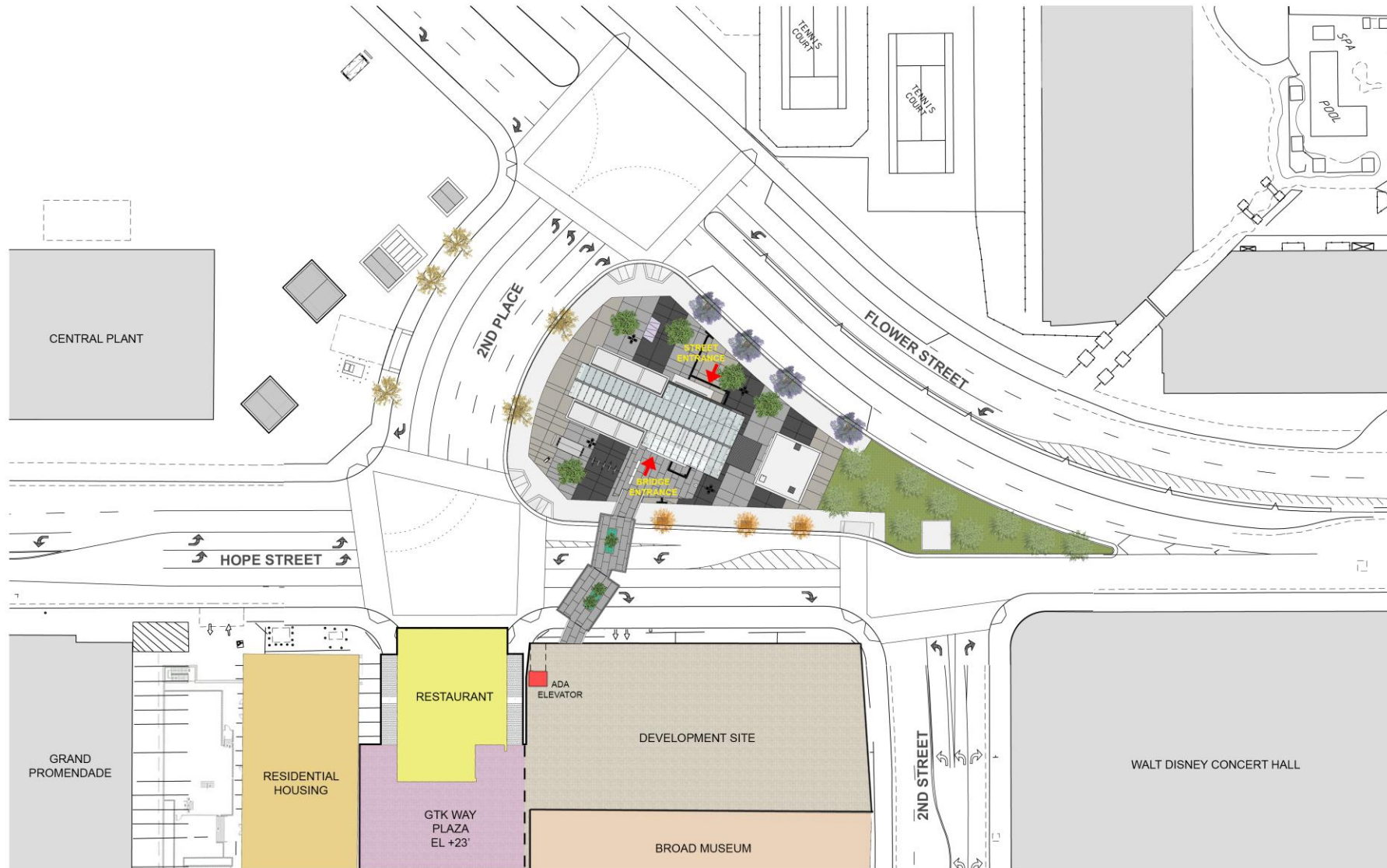
# Southbound Flower St Restoration: Phase 2



# Southbound Flower St Restoration: Activity Summary

- Street restoration
  - Southbound Flower St, 1st St to 3rd St
  - Two phases, each lasting 5 weeks
  - Maintains one thru traffic lane
  - Anticipated to start late January-early February
  - Anticipated daytime and late evening work hours

# Final Street Reconfiguration Around Station



Questions?

# Community Outreach and Engagement



Construction notices



Stakeholder briefings



Door-to-door distribution within ½ mile radius



Email notice distribution



Posting on Next Door



Postings on Facebook and Twitter



Waze map integration



Project website

# Next stop: the missing link.

## REGIONAL CONNECTOR TRANSIT PROJECT



Email: [regionalconnector@metro.net](mailto:regionalconnector@metro.net)



Facebook: [@metroregionalconnector](https://www.facebook.com/metroregionalconnector)



Project Website: [Metro.net/RegionalConnector](https://Metro.net/RegionalConnector)



Information Line:  
213.922.7277

Available 24 hours a day,  
7 days a week  
In-Language interpreter available



Twitter: [@metroconnector](https://twitter.com/metroconnector)



# Eastside Access Improvements (TIGER Grant)



# Meet the Team

## **Jeanmarie Hance**

Community Relations Manager

## **Niraj Vora**

Construction Project Manager

## **Katrice Candler**

Sr. Community Relations  
Officer

# Project Overview

The Eastside Access Improvements will implement streetscape, pedestrian safety and bicycle access improvements within a ½mile radius around the future Metro Little Tokyo/Arts District Station at 1<sup>st</sup>/Central.



Walk/Bike Esplanade



Class II BikeLanes



Storm Parkways  
(Biowales)



Street Trees



Street Light LED  
Conversion



Wayfinding Signage



Crosswalk Installation



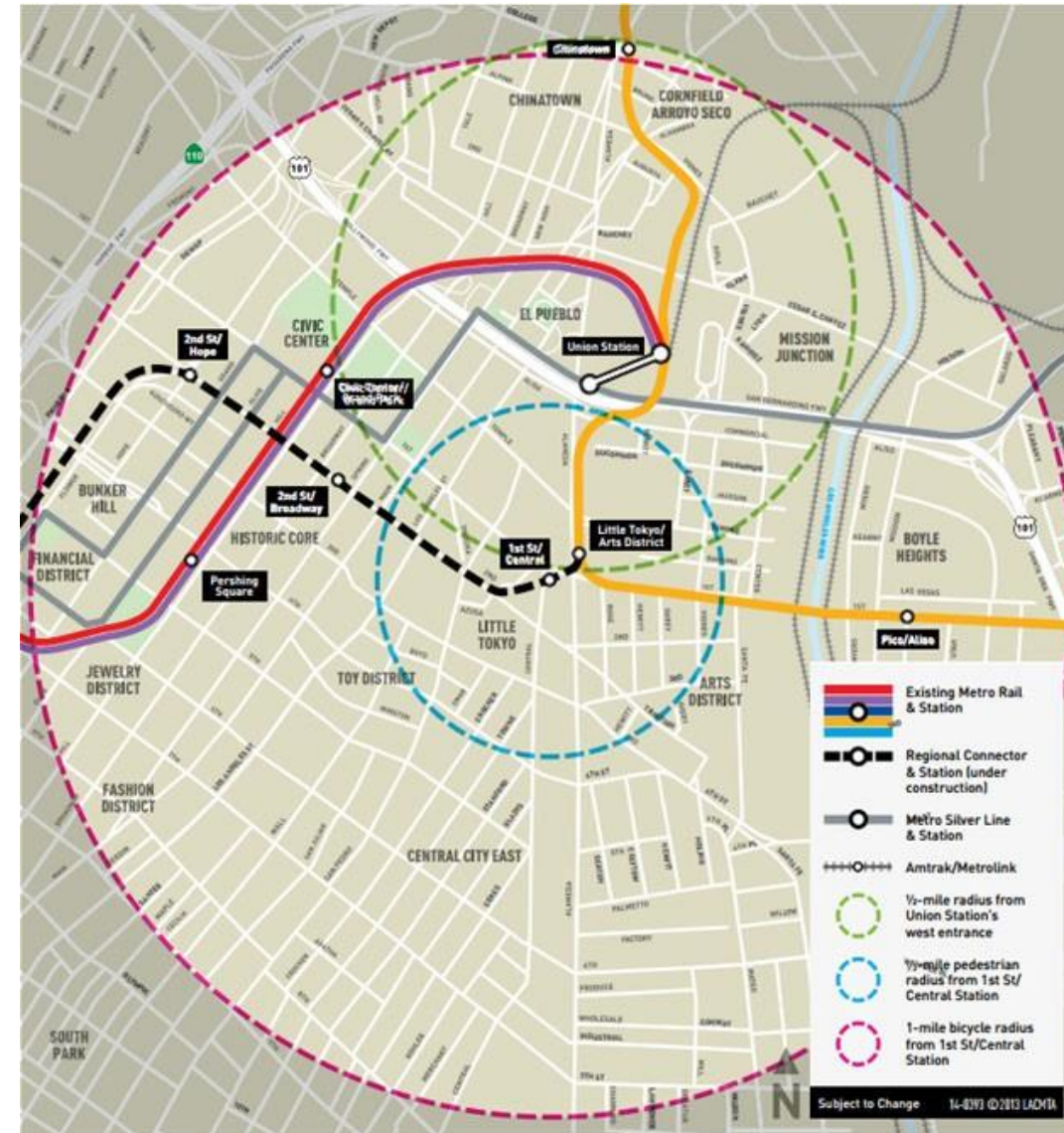
Decorative Crosswalk  
Restoration



Street Furniture  
Restoration



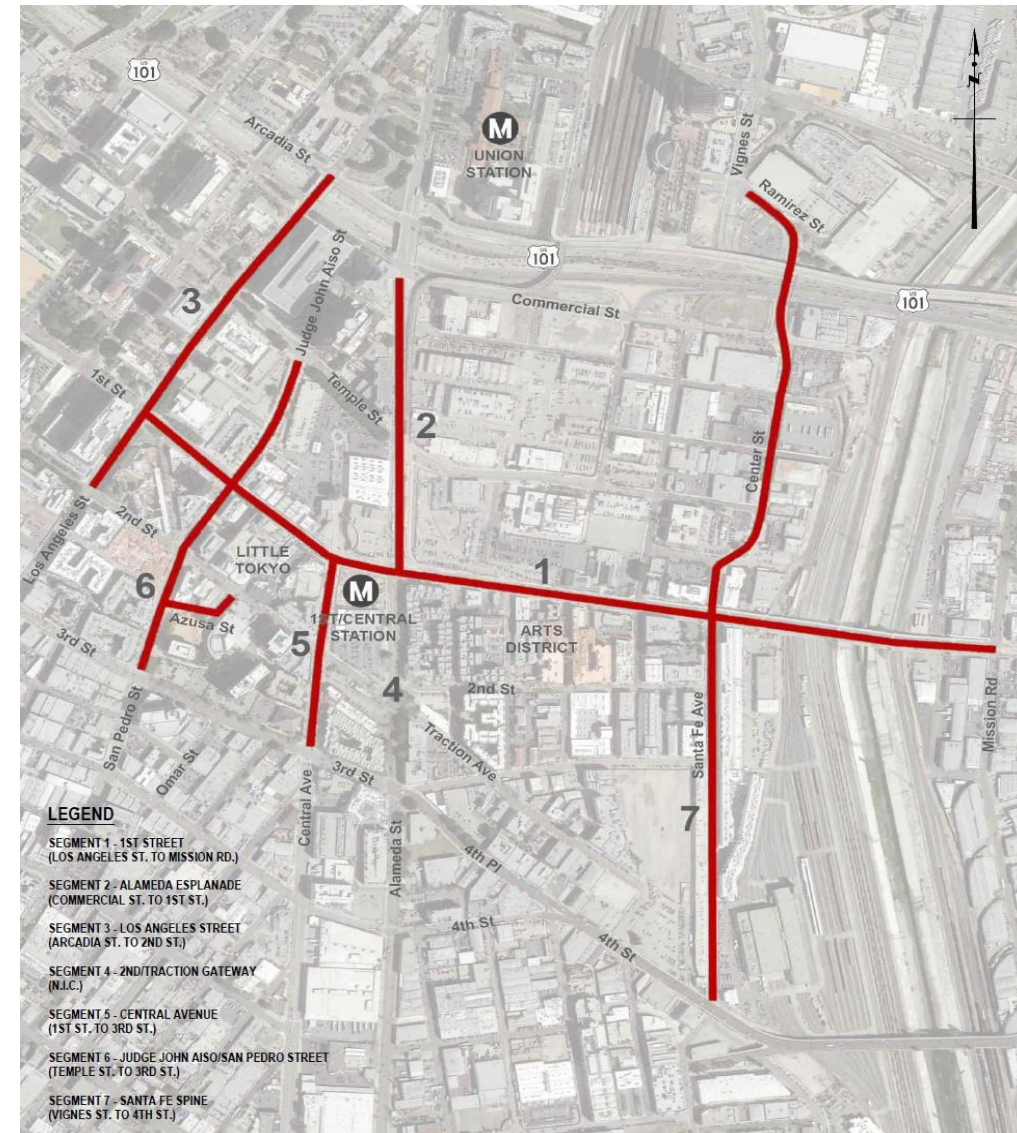
ADA CurbRamp  
Installation



# Project Timeline

- March 18, 2021: Metro Board of Directors Approved Project Budget 29.7 Million Investment
- July 2021: Contractor on board. Construction planning process initiated.

**Project Timeline: September 2021 – June 2022**  
**Exception: Alameda Esplanade – Fall 2022**



# Ongoing Work



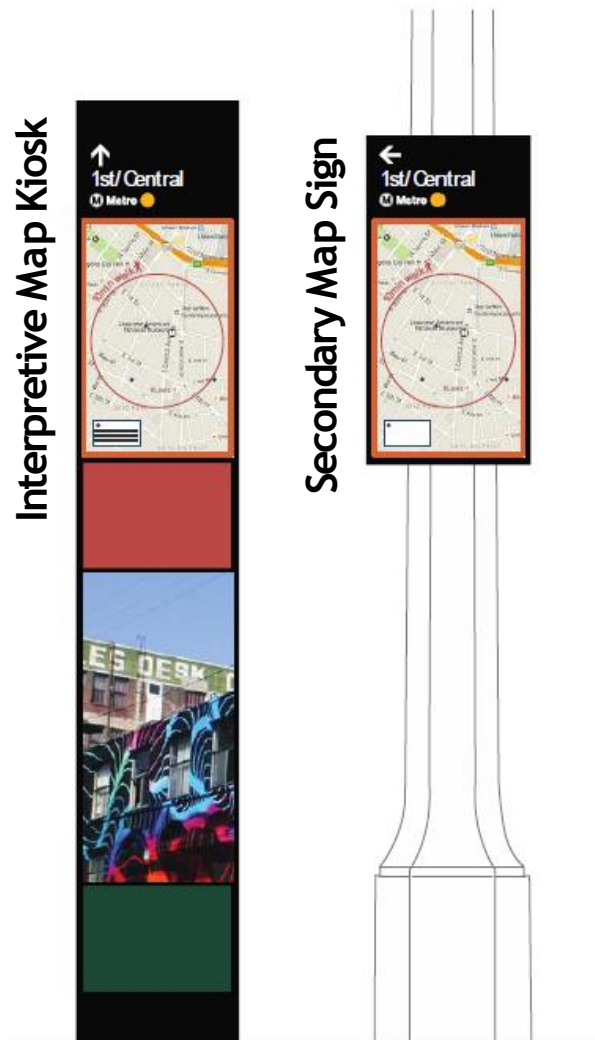
Los Angeles St

## Wayfinding Signage Work in Little Tokyo and Arts District



2nd St

# Wayfinding Signage Design



*\*Graphic Design subject to community input*

## Interpretive Map Kiosks

- > 10 kiosks: (8) Little Tokyo (2) Arts District
- > Dimensions: 6'8" x 1'2" x 8"
- > Eight static graphic panels per kiosk, may vary per location
- > Installation on city sidewalk

## Secondary Map Signs

- > 23 signs: (18) Little Tokyo (5) Arts District
- > Dimensions: 2'4" x 1'2" Sign
- > Installation on existing street poles

## Signage Design

- > Panel content to be determined
- > Anti-graffiti coating

# Ongoing Work



## Utility Investigation Work in Arts District



# Segment 2: Alameda Esplanade



Alameda St at 1st St, looking north

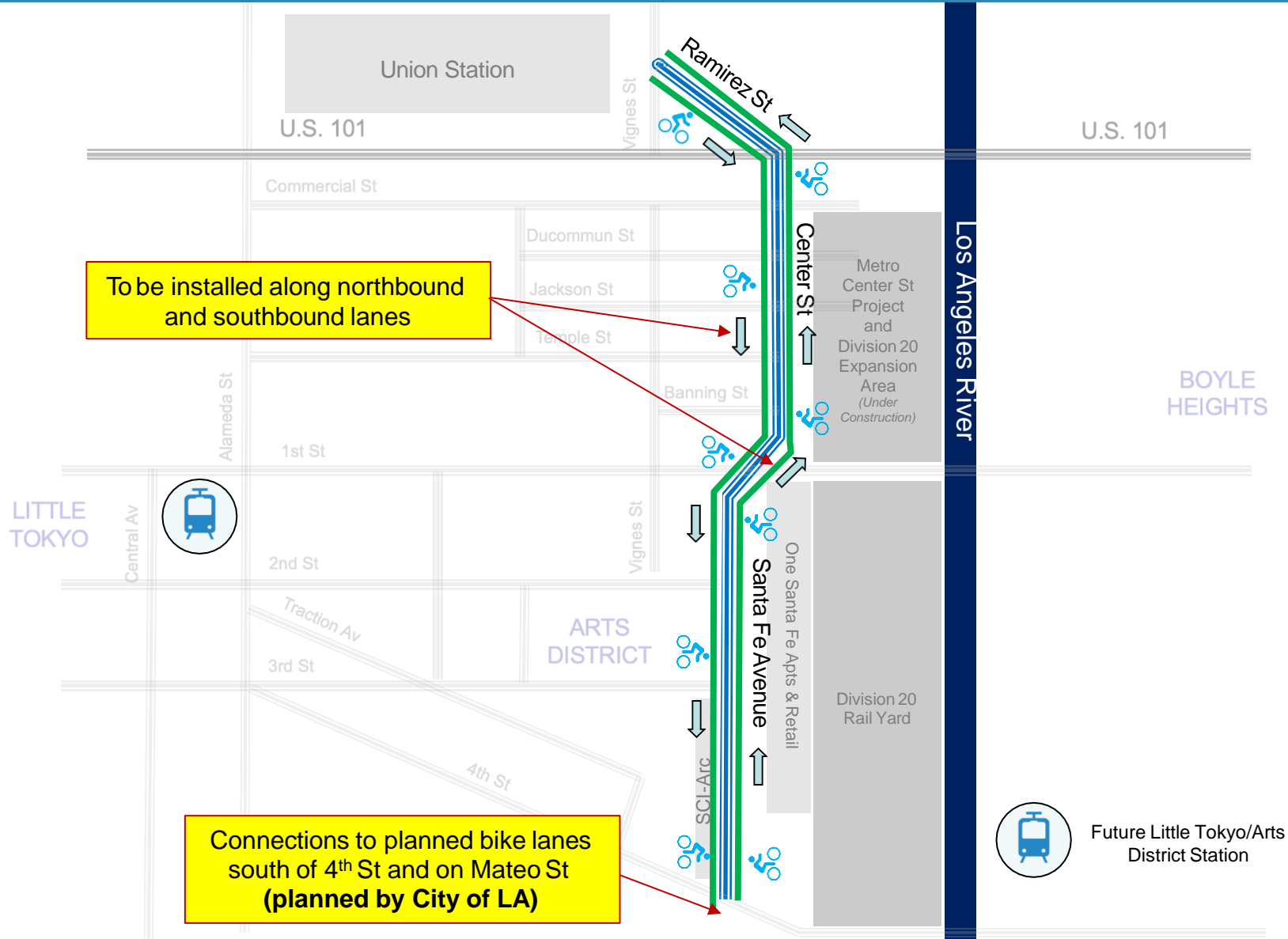
# Segment 7: Santa Fe Spine – Arts District



*Santa Fe Av at 3rd St, looking south*

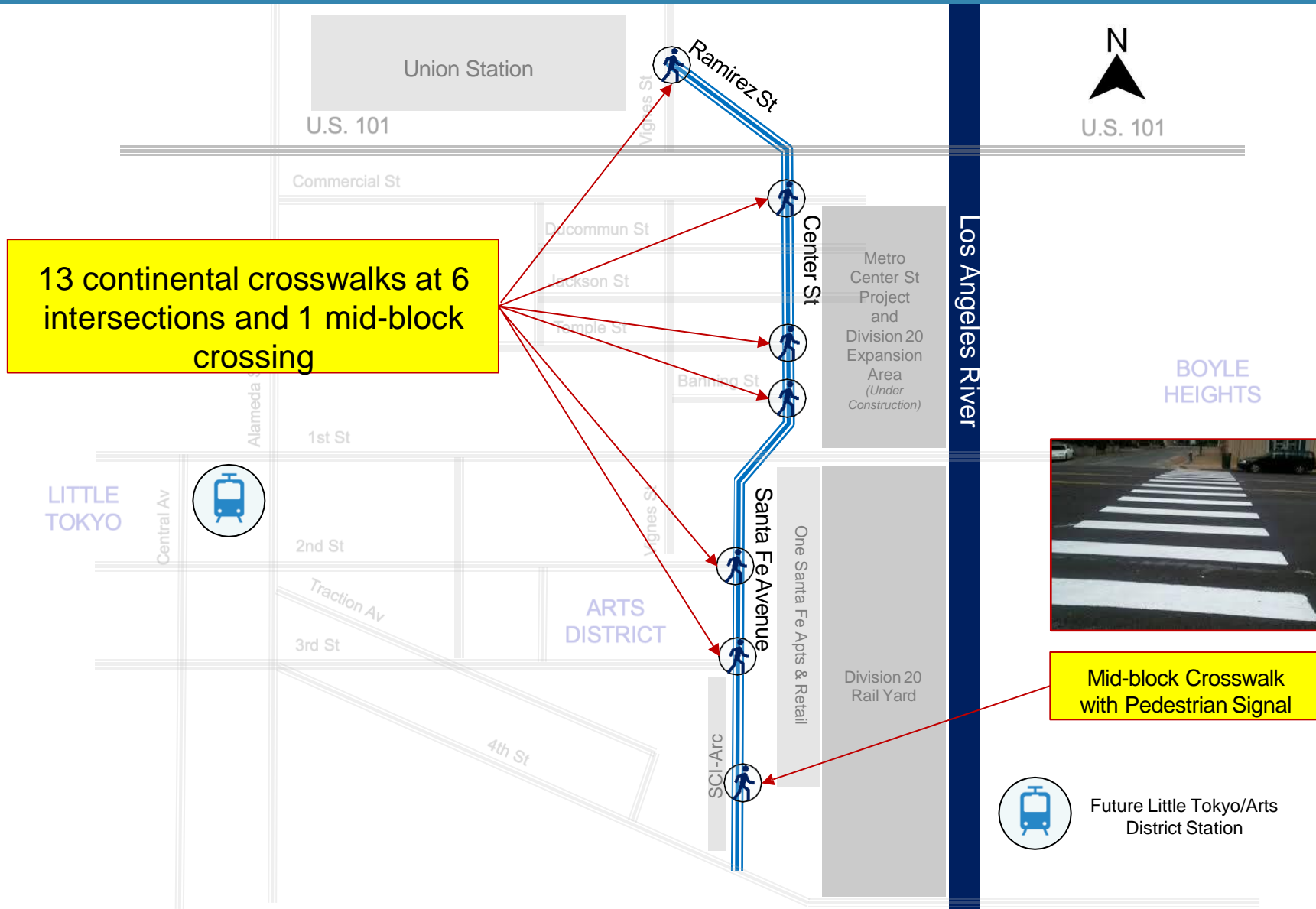
# Segment 7: Santa Fe Spine – Arts District

## Class II Bike Lanes



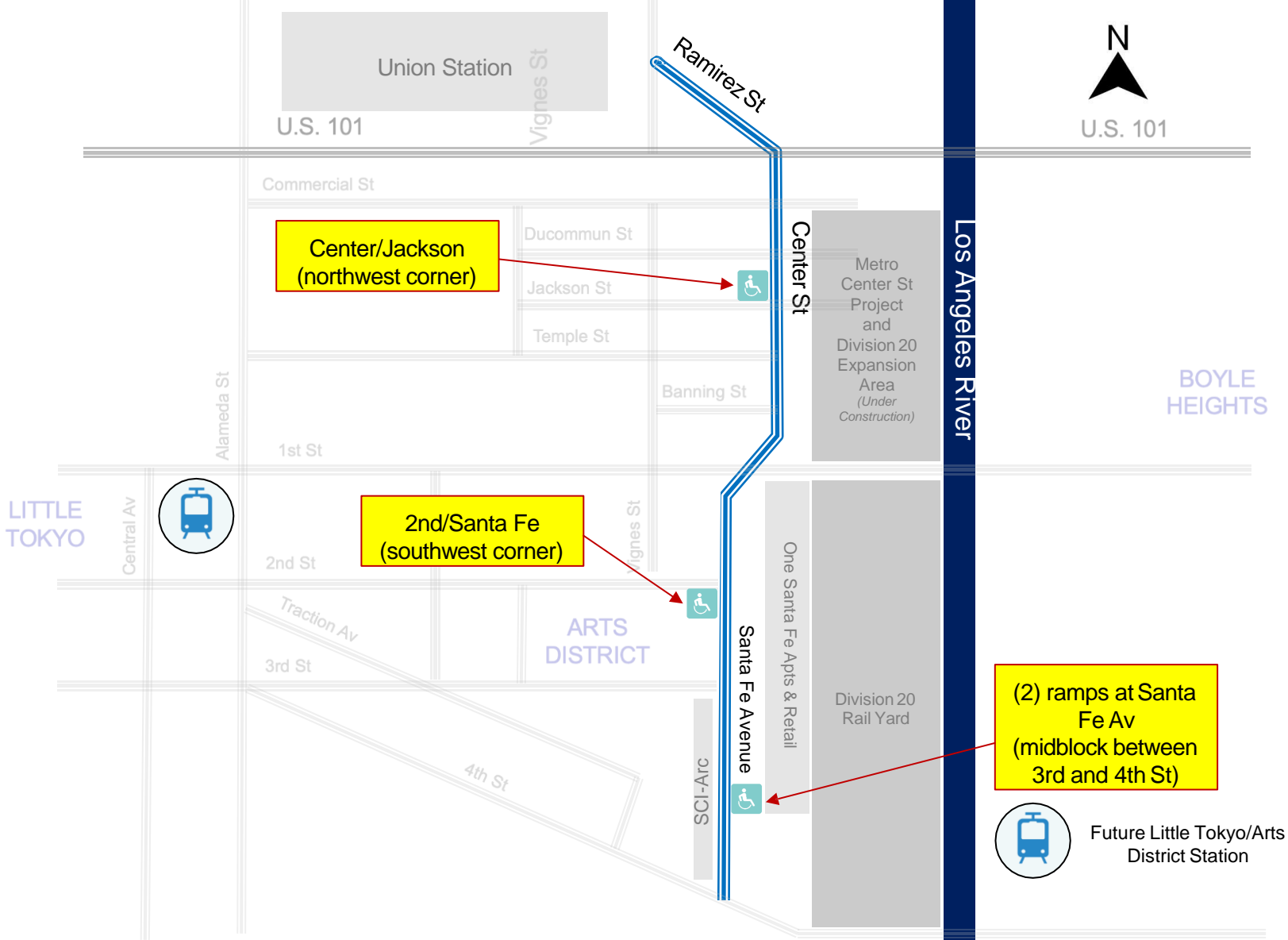
# Segment 7: Santa Fe Spine – Arts District

## Crosswalk Improvements



# Segment 7: Santa Fe Spine – Arts District

## ADA Curb Ramp Improvements



Center/Jackson  
(northwest corner)

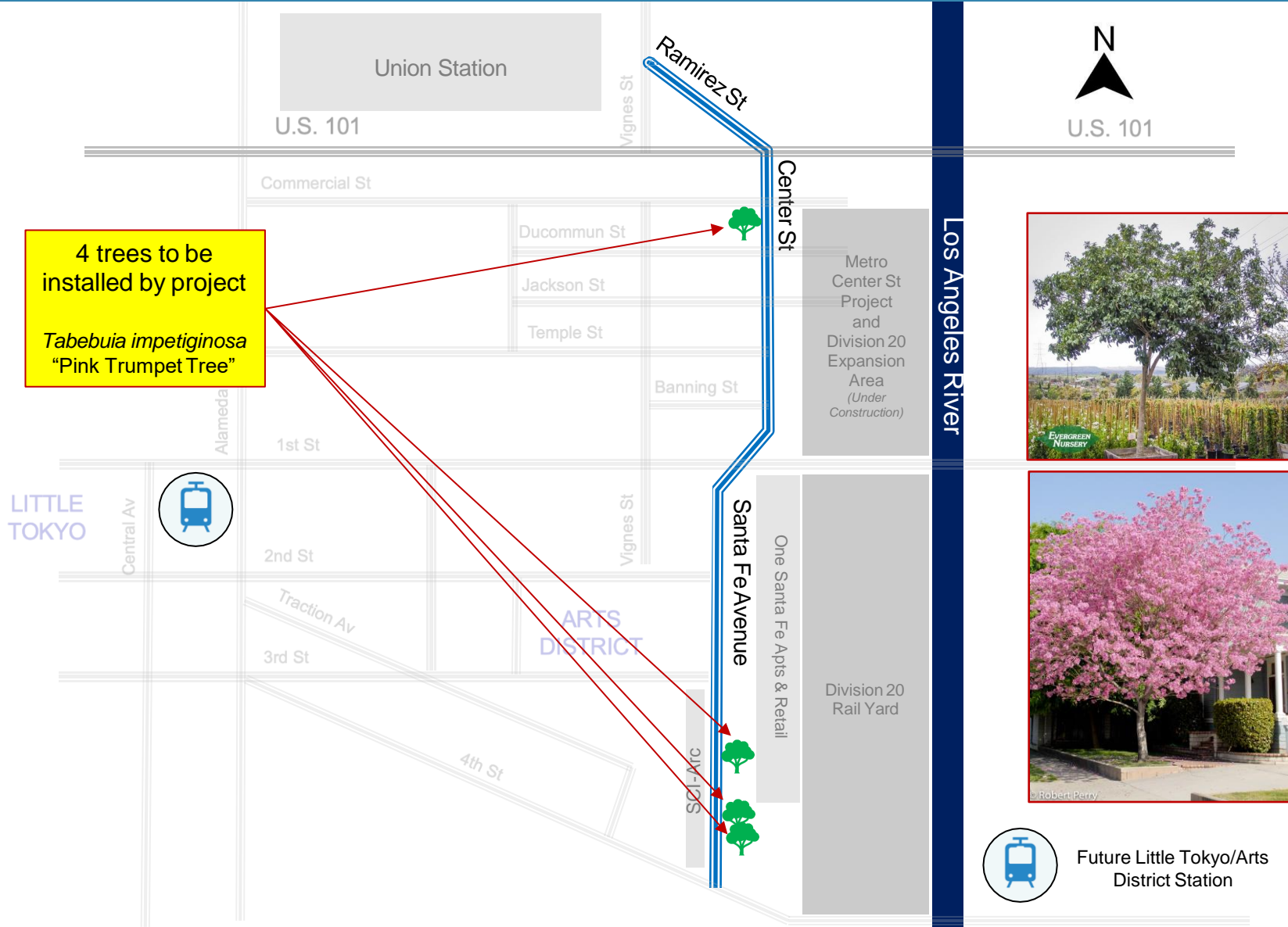
2nd/Santa Fe  
(southwest corner)

(2) ramps at Santa Fe Av  
(midblock between 3rd and 4th St)

Future Little Tokyo/Arts District Station

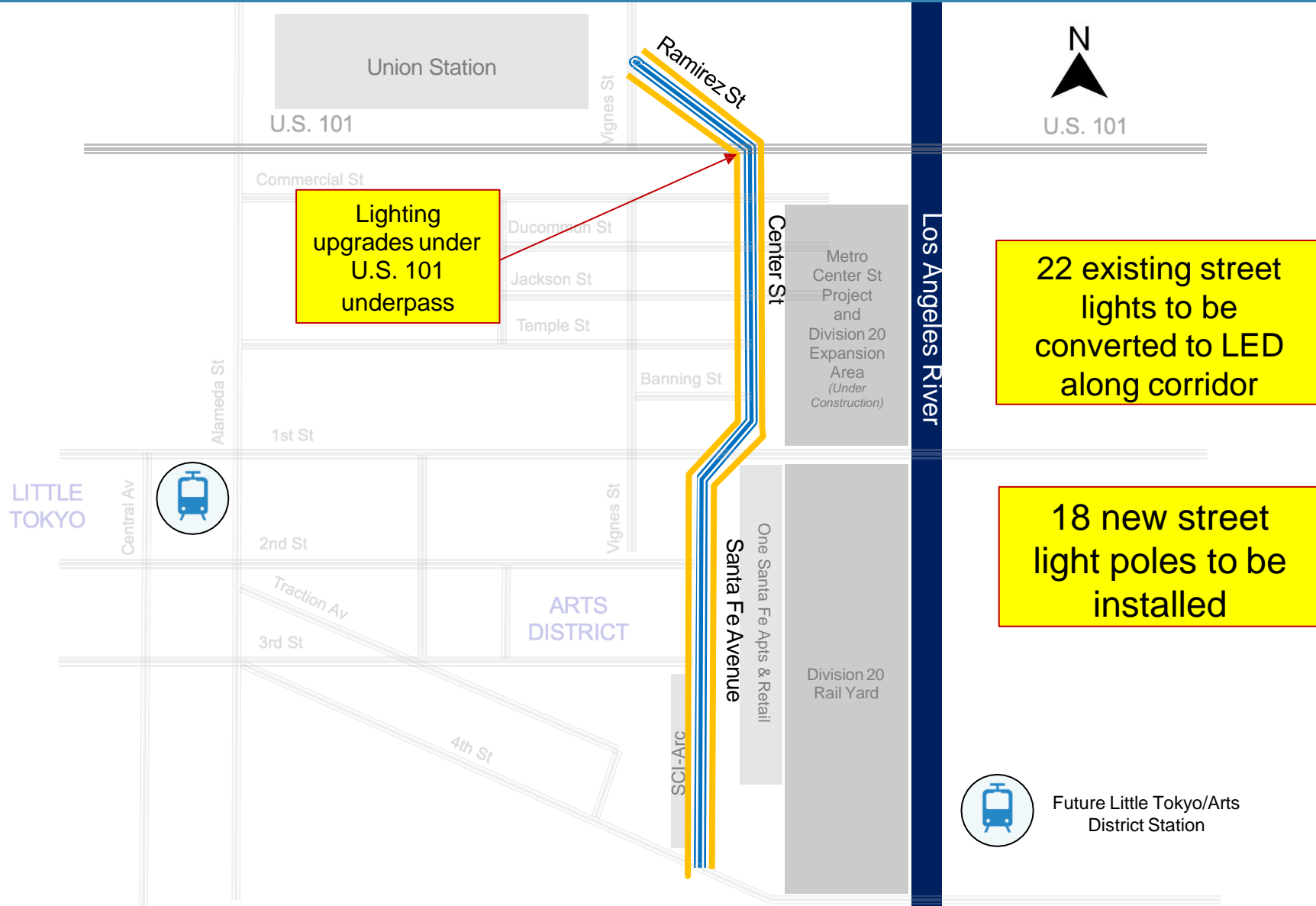
# Segment 7: Santa Fe Spine – Arts District

## New Street Trees



# Segment 7: Santa Fe Spine – Arts District

## Street Light Improvements & Upgrades



# Stay Connected



***213-922-1111***



***centrallaprojects@metro.net***



***metro.net/eastsideaccess***

Questions?



Metro®

# Metro Center Project

# Meet the Team

## Program Management

**Jeanet Owens**

Project Executive, Metro

**Aston Greene**

EO, System Security & Law  
Enforcement

**Kate Amissah**

Project Manager, Metro

**Sheida Roghani**

Project Manager, Construction Support

## Amoroso – Contractor

**Nathan Berkey**

Project Manager, Amoroso

## Community Relations

**Olga Arroyo**

Manager

**Katrice Candler**

Sr. Community Rlts. Officer

## Art & Design

**Mayen Alcantara**

Sr. Manager

**Allison Porterfield**

Sr. Specialist

# Project Overview

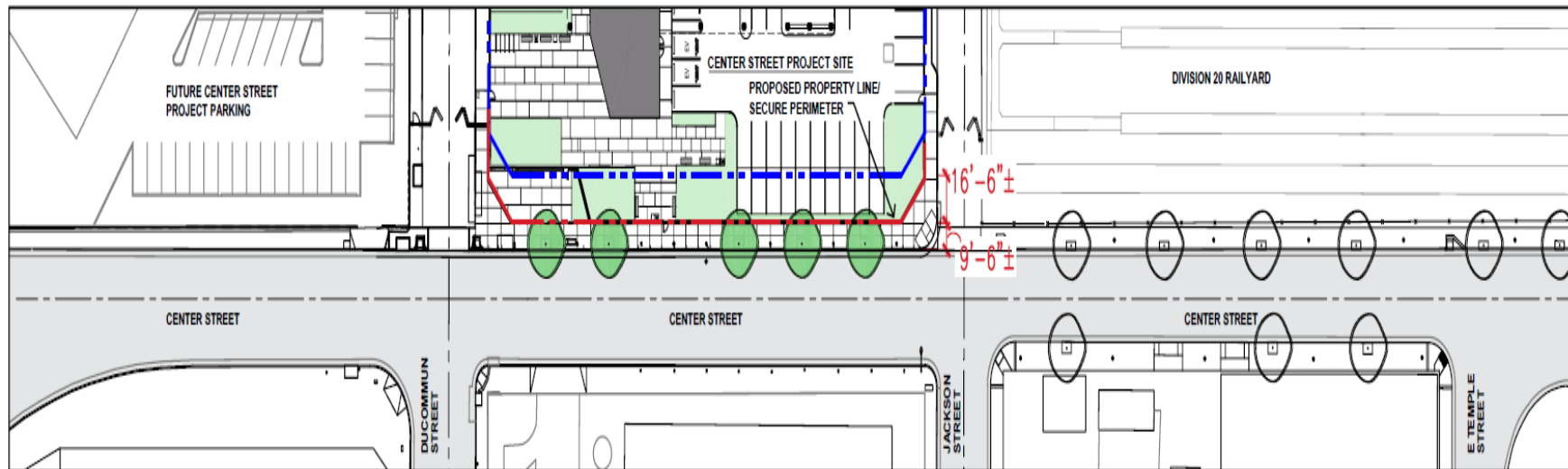
## Metro Center Project:

1. A one-story building, with a second-story option to be built later
2. 26,000 square feet
3. Metro staff only-secured facility
4. Located on Center St, near the US-101 Fwy
5. Slated to open in 2023
6. Will meet the Leadership in Environmental and Energy Design (LEED) Gold certification



# Metro Center Project Streetscape

1. Maintains the current roadway width of Center Street
2. Current street widths complements those of Division 20 project
3. Widen the Center Street sidewalk from 8 ft to 9.5 ft (Division 20 sidewalk remains at 8 ft)
4. Install 5 trees and pedestrian lights
5. 16.5 ft street vacation from City of LA



+/- 9'-6" SIDEWALK WITH ADDITIONAL PARKING

# Metro Center Project Permanent Artwork

- > Met the artist and community workshops occurred at the LA Kretz Innovation Campus in 2017. Additional community engagement planned.
- > The artist, Jacob Hashimoto, was selected via a process that included expert advisors rooted in the neighboring communities.
- > Jacob Hashimoto's internationally recognized artwork work is included in a public and private collections including the LA County Museum of Art (LACMA) collection.
- > Permanent artwork will be located on a section of the building's southwestern façade.
- > The main artwork elements will face Center Street with a segment wrapping around the corner facing Jackson Street.
- > Jacob Hashimoto is developing the artwork design and has been coordinating with the project team throughout the project development.

# Temporary Artwork Construction Banner: Selection Process, Community Engagement & Design



JACCC x SLT x Metro Art present:



## EMPTY YOUR CUP: ART ACTIVITIES

by KUNIHARU YOSHIDA & SUSU ATTAR

**EXPAND YOUR IMAGINATION,  
CONNECT OUR COMMUNITIES**

FREE PRINTABLE ART PACKET  
FOR ALL AGES!



# Temporary Artwork Construction Banners: Design Renderings



**Banner 1**

# Temporary Artwork Construction Banners: Design Renderings



**Banner 2**

# Upcoming Work

- **Sidewalk closure on east side of Center Street between Jackson St. and Ducommun St by early 2022**
  - a. Traffic Control plans under development for City review and approval
  - b. Coordination with Division 20 project and Eastside Access Improvement projects
  
- **Temporary construction fence artwork installation Spring 2022**

# Stay Connected



**[Centrallaprojects@metro.net](mailto:Centrallaprojects@metro.net)**



**213-922-1111**



**[Metro.net/centerproject](https://metro.net/centerproject)**

**Stay Connected**

**Questions?**

# Next stop: improving rail service.

## DIVISION 20 PORTAL WIDENING AND TURNBACK FACILITY



**Metro**

**Construction Update**

Division 20

January 20, 2022

# Meet the Team

## Community Relations

- > **Marlon Walker**, Manager
- > **Ned Racine**, Principal Community Relations Officer
- > **Katrice Candler**, New Media Officer

## Contractor

- > **Joanna Amador-Dempsey**, Construction Communications Coordinator



EL PAJO SALDAS

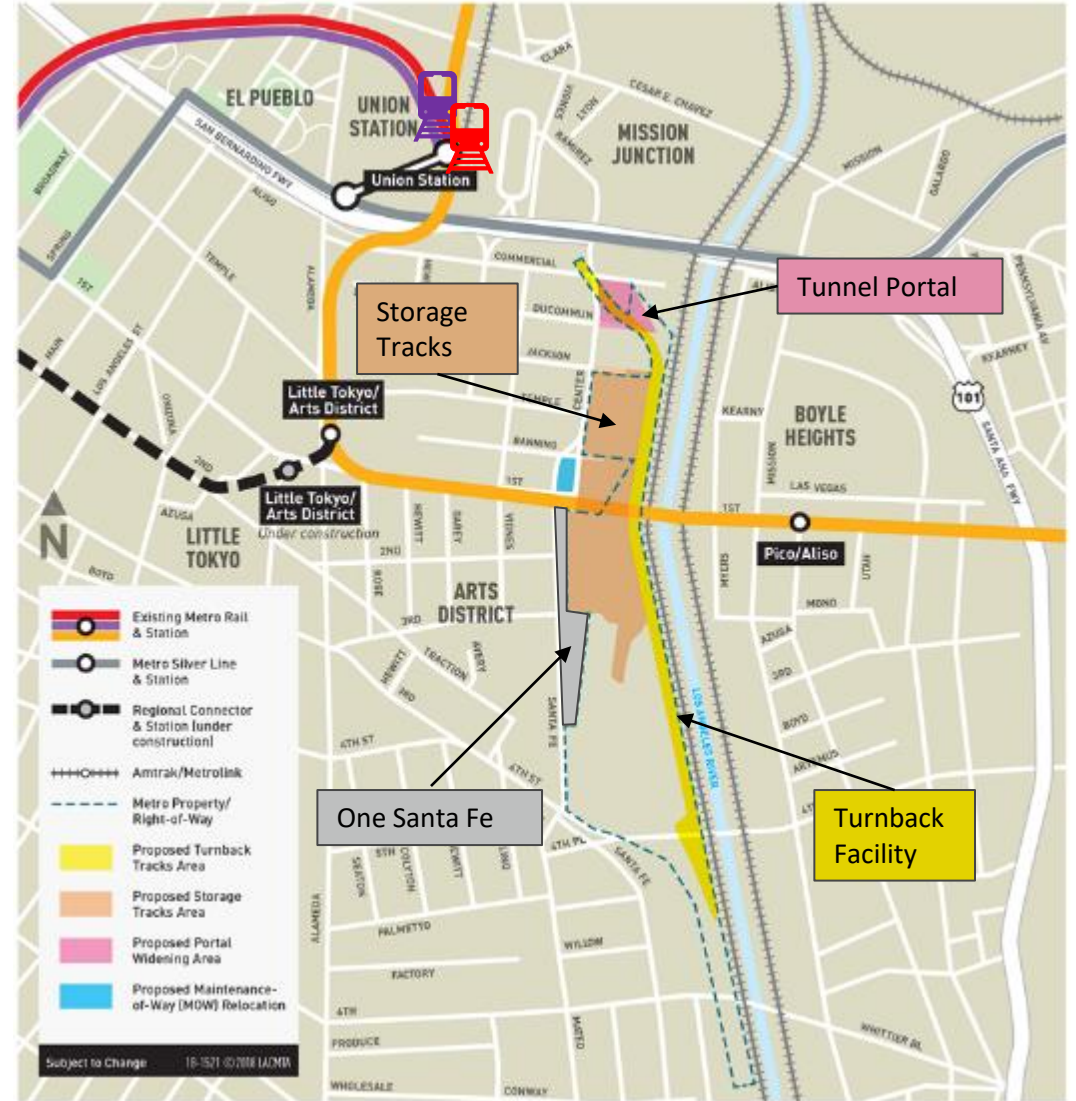
Life Storage

CENTER ST

COMMERCIAL ST

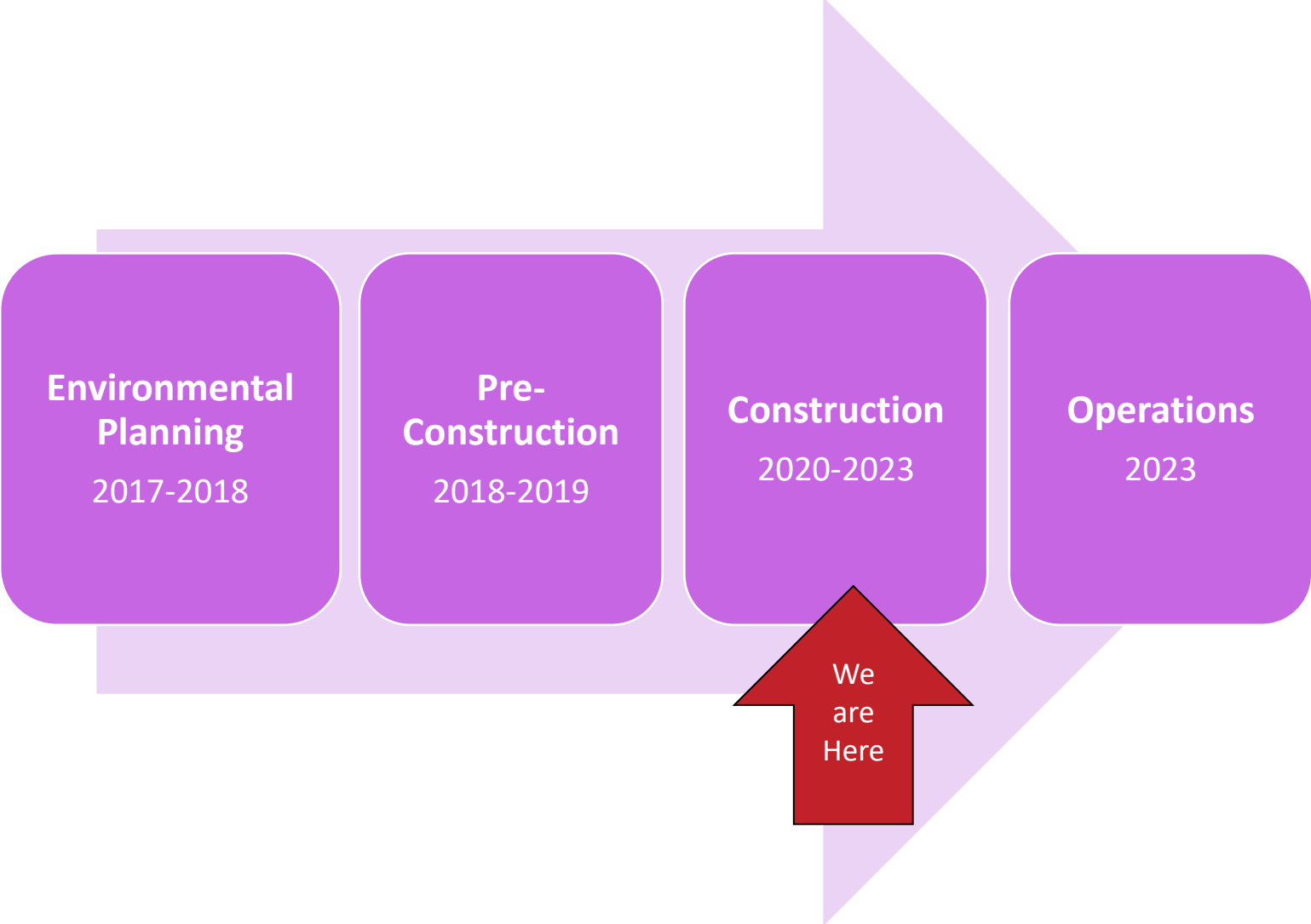
# Project Overview

- > Operational improvements to Metro's Division 20 Rail Yard will accommodate increased service levels on the Metro Red and Purple (B and D) Lines
- > Improvements include:
  - Widening of heavy rail portal
  - New turnback facility
  - Expansion and reconfiguration of rail storage tracks
- > Benefits
  - Faster and more frequent service



Exact location of turnback tracks and storage tracks to be determined.

# Project Timeline



# Current Work

## North Storage Yard

Adding and moving utilities supports additional tracks for more rail car storage.

> Examples of utilities:

- Domestic water line under Banning St.
- Fire water lines
- Lighting duct banks
- Main storm drain pipes.
- Underdrains throughout the north yard



The retaining wall from Banning St. to Jackson St.



Thirty-eight light poles are being installed in the north storage yard, not including lights on walls. Here a completed light base is prepared for concrete.

# Current Work

## Portal Widening

Once tracks are installed, the portal—expanded from two to four tracks—will carry subway cars from the rail yard to the underground entrance to Union Station.

Future activities will include installation of dewatering wells at the entrance of the portal.



The area in the center will be demolished.



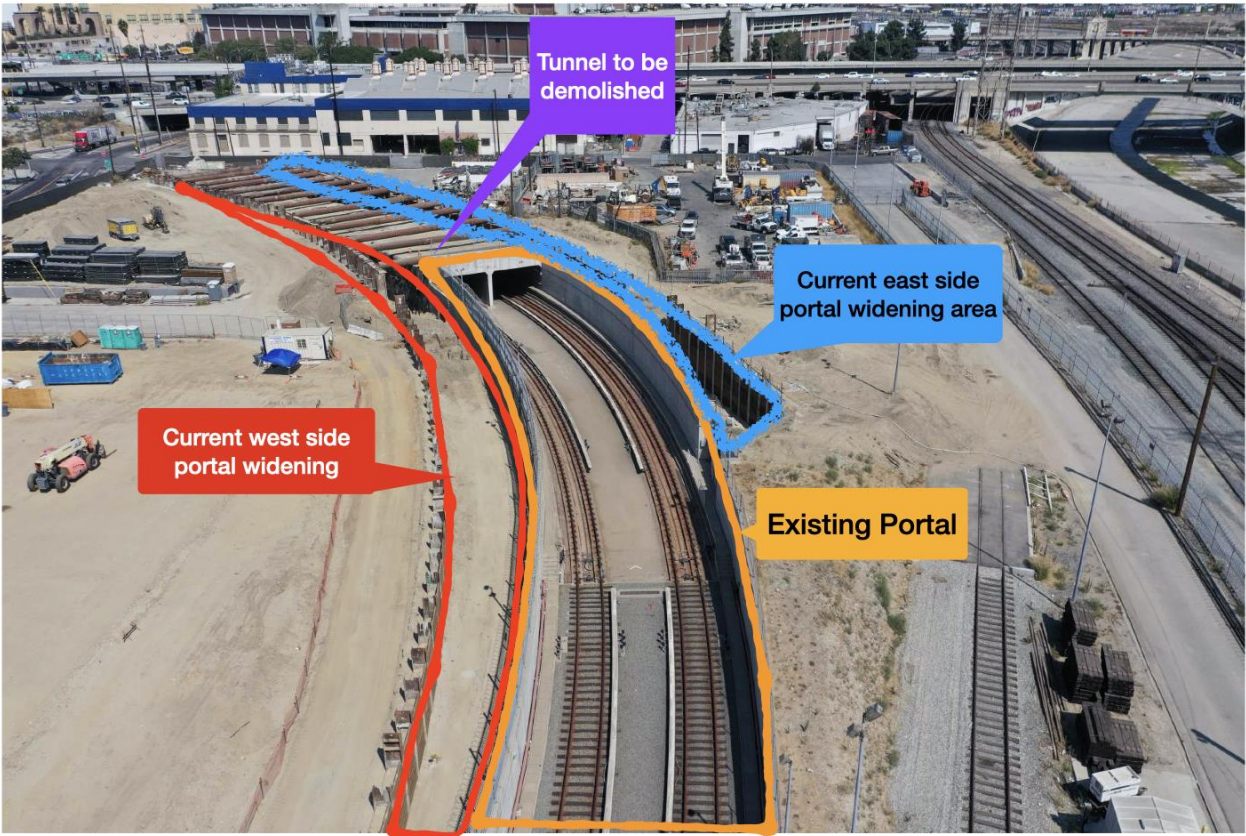
Water in the Portal

# Current work- Portal Area

Before Construction



Current area\*



\*Delineations on the image are not to scale.

# Current Work

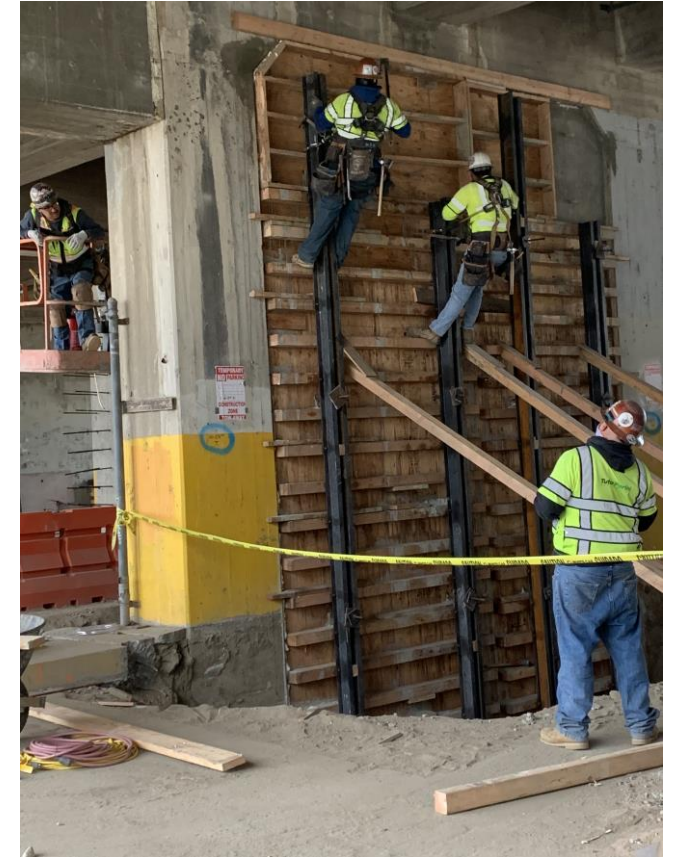
## 1st Street Bridge Modifications

These modifications provide more structural support, allowing bents to be removed, which enables more tracks to be placed under the bridge.

Other modifications include infilling of walls and adding edge girders to the bridge's south side, providing more structural support. These activities continue through early 2022.



Here is an example of a completed wall infill.



Workers remove falsework after the concrete placement and curing process.

# Current Work- 1st Street Bridge



1st Street Bridge bracing and other concrete repair continues.

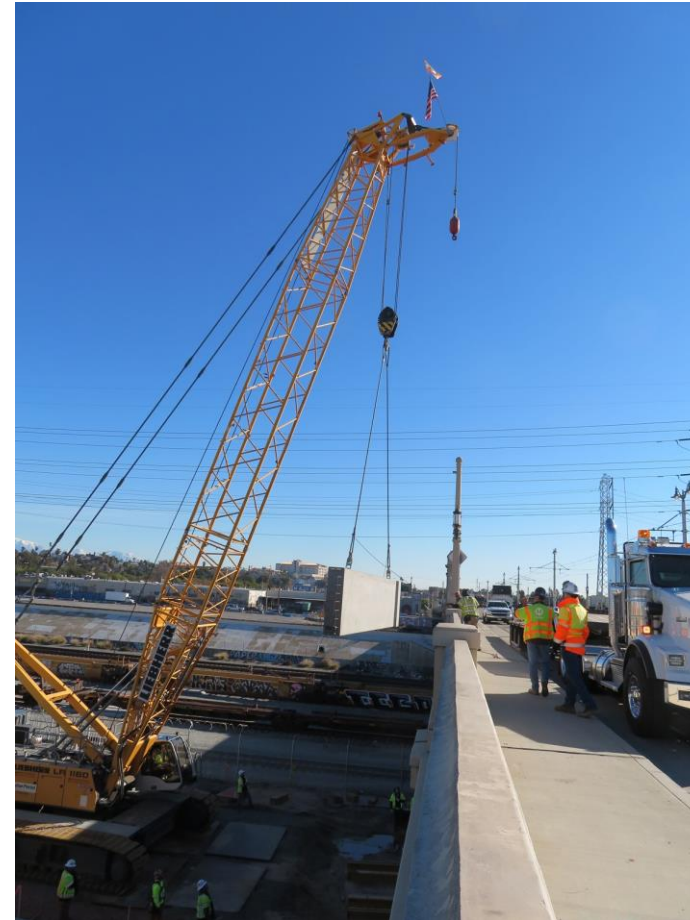


Completed structural wall prior to installation of girders and the demolition of selective support bents.

# Current Work- 1st Street Bridge



Installation of a edge girder underneath the 1st Street Bridge in the Arts District

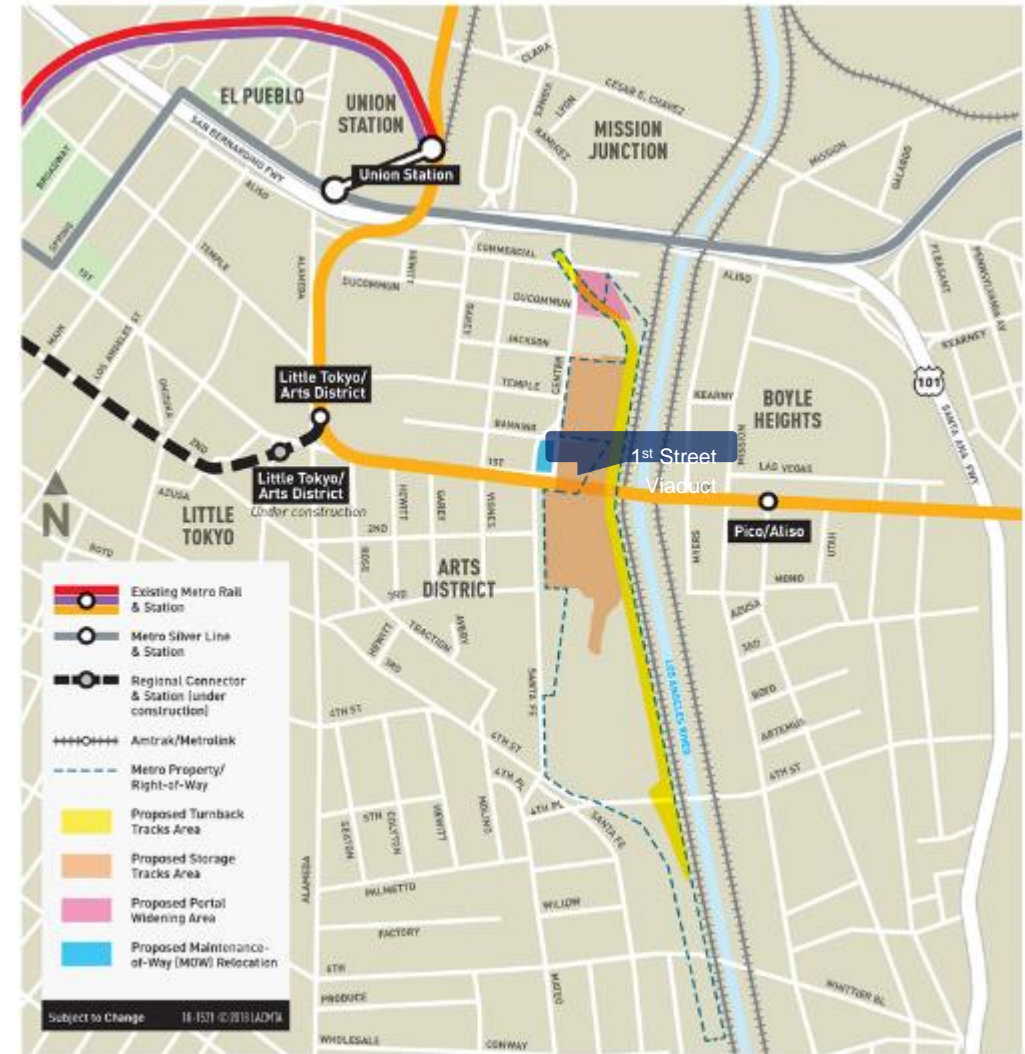


Delivering the first girder out of a total of 11 for this phase of the work

# Upcoming Work

*\*Work is subject to change*

- > Continue duct bank and manhole installation for various utilities (lighting, water, and power).
- > Construct Center St. east side sidewalk, add permanent fence, and remove the "K-rail" concrete barriers (January 2021).
- > Continue 1st Street Bridge improvements, including work east of Los Angeles River.
- > Construct portal foundation and walls.
- > Installation of temporary security fence along Amtrak and Metro tracks.
- > Shoofly tracks preparation and work beginning this month.



*Exact location of turnback tracks and storage tracks to be determined.*

# Upcoming Work



From the perspective of the One Santa Fe building, this photograph captures the south side of the Division 20 yard and looks northeast to the 1st Street Bridge.

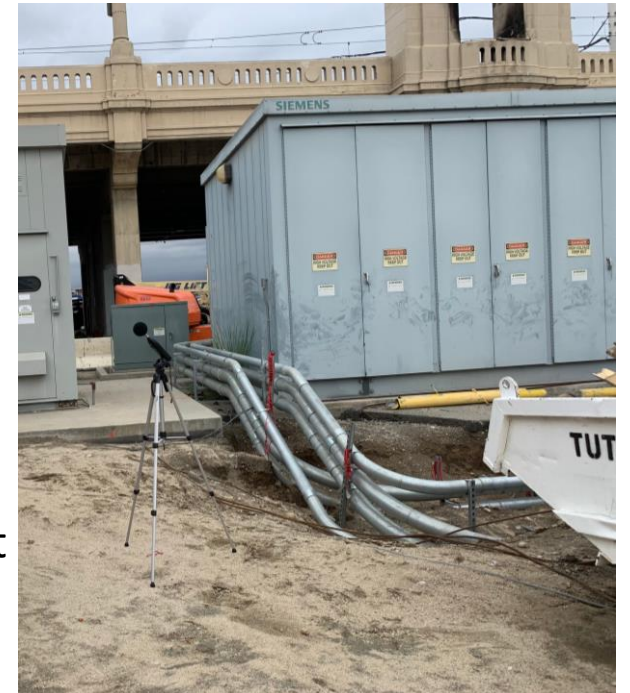
# Construction Mitigations

## > Best practices on the construction site:

- Equipment and staging areas shall be located away from noise-sensitive receivers, and noise barriers should be used when possible
- Minimize high-impact devices such as jackhammers and hoe rams
- Utilize lower impact devices such as concrete crushers and pavement saws
- Refrain from idling of equipment
- Use frequent watering to reduce dust



Watering truck can be seen in the background immediately east of the One Santa Fe building.



Here sound monitoring equipment sits in the south yard near the future traction power substation.

# End-of-Project Mitigations

- > On the east side of Center Street from Jackson Street to Banning Street, the Portal Widening Project will provide:
  - Street lighting
  - Pedestrian lighting
  - Tree wells
  - Vines
  - The Arts District reviewed these streetscape elements
- > The Portal Widening Project will provide a 10-foot-wide sidewalk on the west side of Center St from East Temple St to Jackson St and will provide an 8-foot-wide sidewalk on the east side from Jackson St to Banning St

## How to Reach Us

- > **Project Hotline: 213-922-6934**
- > **Project Email:**  
**[div20portalwidening@metro.net](mailto:div20portalwidening@metro.net)**
- > **Stay Connected**
  - Construction notices posted online at [metro.net/division20](https://metro.net/division20)
  - Receive email project updates and construction notices

Questions?

# Central LA Region Projects: Next Steps

- > Next Meeting: Thursday, March 17, 2022
- > Let us know your thoughts
- > [Survey](#)



**213-922-1111**



**Centrallaprojects@metro.net**

