

# Welcome!

*We will begin in a few moments.*

Central Los Angeles

April 26, 2023

# Housekeeping

Today's meeting is being recorded.



Attendee cameras are turned off and microphones are muted.



During the meeting, questions and comments can be submitted using the Q&A icon.



For technical support, call or text 213.276.6008

**THANK YOU**

# Welcome and Agenda

---

**Thank you for joining us!**

---

Metro Announcements

---

Regional Connector Transit Project

---

Eat Shop Play

---

Eastside Access Improvements Project

---

Metro Center Project

---

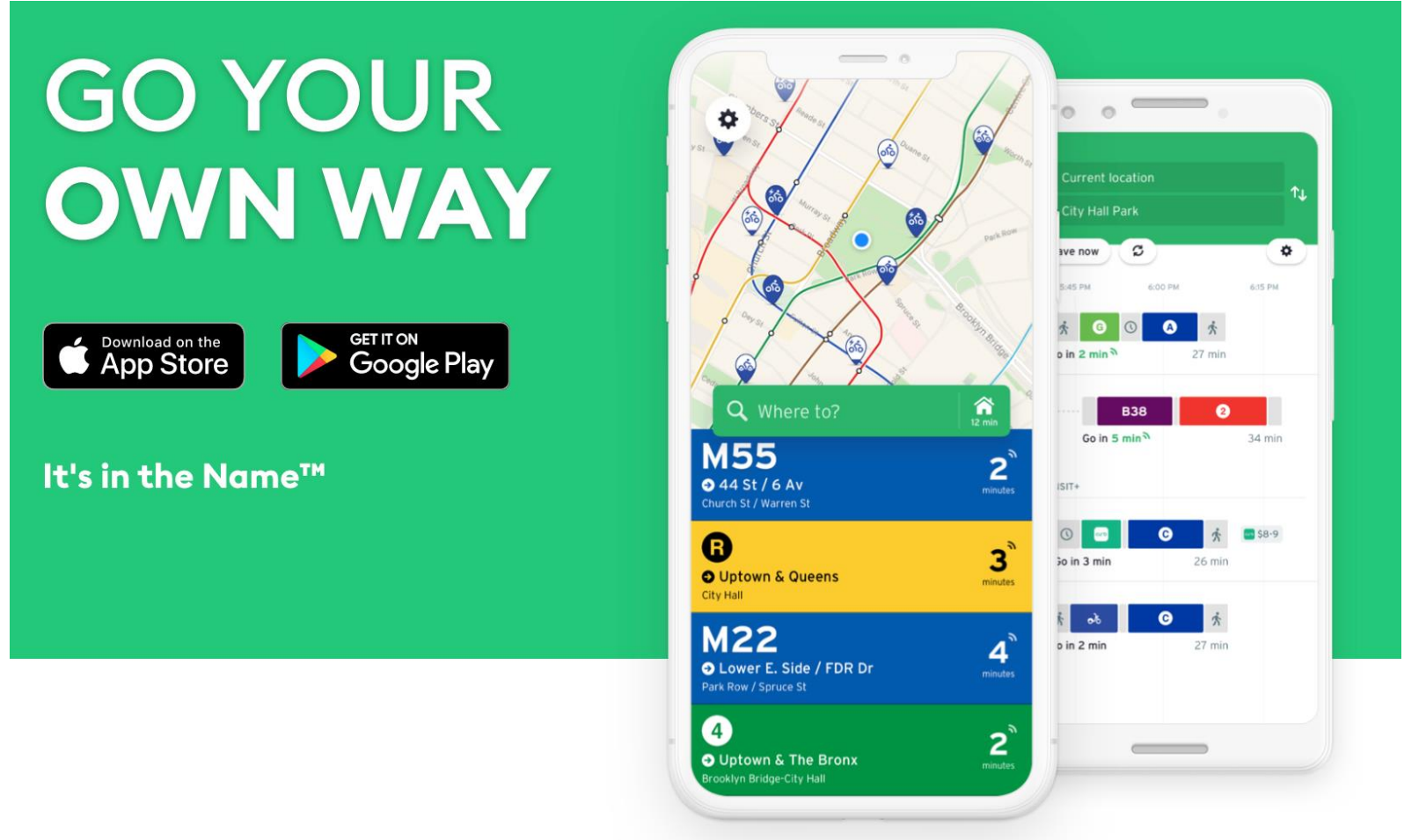
Division 20

---

# Agency Announcements

## Transit App:

- Bus and rail schedule information





Easy and anonymous way to connect with Metro Security anytime

# Let's Ride Safely Together

---

Keeping riders safe is our number one priority and we're committed to providing you with a great experience on Metro. That's why we've launched a plan that reimagines the way we approach public safety, to ensure all our riders feel safe, comfortable, and welcome on our system.

Check out ['Let's Ride Safely Together'](#) to learn how we're improving security, cleanliness, and customer care on our buses and trains.





## Free transit for students with GoPass!

Students at participating K-12 schools and community colleges ride for free on Metro and other transit agencies.

To find out if your district is participating, contact your school or visit [metro.net/gopass](https://metro.net/gopass).



**Metro**

# Metro's Discounted Fare Program\*

*\*Subject to change once Fare Capping is implemented*

## Discounted Prices

- > Buy a pass, save half
- > 1-Day, 7-Day and 30-Day passes at half-price savings
- > \$3.50 for a day pass, \$12.50 for a weekly pass and \$50 for a 30-day pass
- > Fares available on TAP vending machines, taptogo.net and at Metro Customer Centers for purchase

## Low-Income Fare Is Easy (LIFE) Program

- > The Low-Income Fare is Easy (LIFE) Program provides transportation assistance to low-income individuals in Los Angeles County by offering fare subsidies towards the purchase of passes on Metro or any LIFE participating transit agencies.
- > **New LIFE riders get 90 days of free rides**
- > \$26 for a 30-day pass (regularly \$76)
- > \$6.50 for a 7-day pass (regularly \$19.50)
- > To sign up for the LIFE Program, visit [www.metro.net/life](http://www.metro.net/life)



**Metro**

**Tap into savings.**

A little help can go a long way. So we've made it easier to enroll in Metro's LIFE Program. Sign up now and get go days of free rides. Visit [metro.net/life](http://metro.net/life) to get started.

**M Metro**

Fare collection has resumed. When riding, please have your fare ready.

**Aproveche los ahorros.**

Con un poco de ayuda, se ayuda mucho. Por eso, hemos facilitado la inscripción en el programa LIFE de Metro. Regístrese ahora y obtenga go días de viajes gratis. Visite [metro.net/life](http://metro.net/life) para comenzar.

**M Metro**

La colección de tarifas se ha reanudado. Cuando viaje, por favor tenga lista su tarifa.

# Central LA Project Team

Centralized communications approach with the community and projects

Core community relations team

Assist with construction related comments and concerns

Serve as a conduit of community priorities within Metro

Projects:  
Regional Connector \* EAIP \* Metro Center Project \*  
Div.20

# Central Los Angeles Projects

Project	Status	Projected Completion
Regional Connector	Construction	2023
Eastside Access Improvements	Construction	2023
Center Project	Construction	2023
Div. 20 Portal Widening & Turnback Facility	Construction	2024

# Next stop: the missing link.

REGIONAL CONNECTOR TRANSIT PROJECT

Metro Rail

Go Metro

M  
Metro  
Welcome Aboard  
Bienvenidos



Regional Connector Transit Project Update

Central LA Region

April 26, 2023



# Introductions

# Regional Connector Project Team

## **Project Management:**

- Mat Antonelli
- Huburt Kang
- Tung Vu

## **Regional Connector Constructors:**

- Ivan Yee
- Philip Mateo

## **Community Relations:**

- Olga Arroyo
- Katrice Candler
- Rene Torres

## **Community Enrichment and Art Program:**

- Mayen Alcantara
- Jennifer Lieu
- Cristina Coria

# Community Leadership Council (CLC)

# CLC Members

## Little Tokyo/Arts District

- > Chris Aihara, Co-Chair  
Little Tokyo Community Council
- > Miguel Vargas, Co-Chair  
Arts District LA BID

## Historic Broadway

- > Vahn Babigian, Co-Chair  
Metropolitan News

## Grand Av Arts/Bunker Hill

- > Dave Thompson, Co-Chair  
Brookstone Properties

## Grand Av Arts/Bunker Hill

- > Jamie Fang, Co-Chair  
Promenade, Orchids.com

## Flower St/Financial District

- > Michael Shilstone, Co-Chair  
Central City Association
- > Tom Jung, Co-Chair  
Los Angeles Central Library

## At-large Members

- > Ron Lozano, Consultant
- > Joel Wynton, Stakeholder

# Project Overview

- > 1.9-mile underground light-rail system
- > Three underground stations
  - > Little Tokyo/Arts District (1st St/Central Av)
  - > Historic Broadway (2nd St/Broadway)
  - > Grand Av Arts/Bunker Hill (2nd Pl/Hope St)
- > 90,000 daily passengers expected
- > Slated to open for rail passenger service in 2023

# Operational Plan

- > Board approved October 2020
- > Connect the L Line to the A and E Lines
- > One-seat ride between Azusa and Long Beach; East LA and Santa Monica



- Existing Metro Rail Lines & Stations  
A B D E L
- Regional Connector & Station (under construction)
- Metro Busway & Station  
J
- Amtrak/Metrolink

Subject to Change 20-2581 © 2020 LACMTA



A Line (Blue) continues along current L Line (Gold) route to Azusa.

L Line (Gold) continues along current E Line (Expo) route to Santa Monica.

A Line (Blue) continues along current route to Long Beach.

L Line (Gold) continues along current route to East LA.

Grand Av Arts/  
Bunker Hill

CIVIC CENTER

Civic Center/  
Grand Park

Union Station

BUNKER HILL

Historic  
Broadway

HISTORIC CORE

Pershing  
Square

Little Tokyo/  
Arts District

Existing station

7th St/  
Metro Center

FINANCIAL DISTRICT

LITTLE TOKYO

TOY DISTRICT

# Little Tokyo/Arts District Station

Artist: Clare Rojas  
Location: Glass entry pavilion

An architectural rendering of the Historic Broadway Station glass entry pavilion. The scene is viewed from an elevated perspective. The central focus is a modern, multi-level glass and steel structure with a prominent glass facade. To the left, a set of stairs leads up to a platform area. In the background, a large wall features a colorful mural with the words "THE UNITED NEVER" and "people". The station is surrounded by a paved plaza with various people walking, including a person with a stroller and a person with a cane. There are trees and a street with cars visible in the upper right corner. The overall design is clean and contemporary.

# Historic Broadway Station

Artist: Andrea Bowers  
Location: Glass entry pavilion

# Grand Av Arts/Bunker Hill Station

Artist: TBD

Location: Glass Entry Pavilion

# Project Update

# Eat Shop Play

Eat Shop Play highlights local mom and pop businesses in DTLA and Little Tokyo, especially eateries and specialty businesses operating pick-up and delivery during the past months.

The Eat Shop Play DTLA and Little Tokyo programs continue supporting local businesses as construction progresses by promoting them through regular social media posts and newsletters to over 6,000 community members.



# Social Media Spotlights



Metro Regional Connector

March 13 · 🌐



Ahoy! Karaoke Mondays at The Redwood Bar can help sail through your week! Sit at one of the Captain's tables and sample culinary delights from around the world! If karaoke isn't part of the journey, pull up a stool and listen to some of the finest musical acts the City of Angeles has to offer.



Metro Regional Connector




April 12 at 2:00 PM · 🌐



LA Financial Credit Union downtown branch is another banking option for those living and/or working in #dtla. Located across from the Historic Broadway Station, this credit union began in the 1930s after the Great Depression with the principle of people helping people. Since then, the organization has grown from serving LA County employees to everyone in LA County while staying true to its roots. <https://bddy.me/41slWal>



# Project Look Ahead

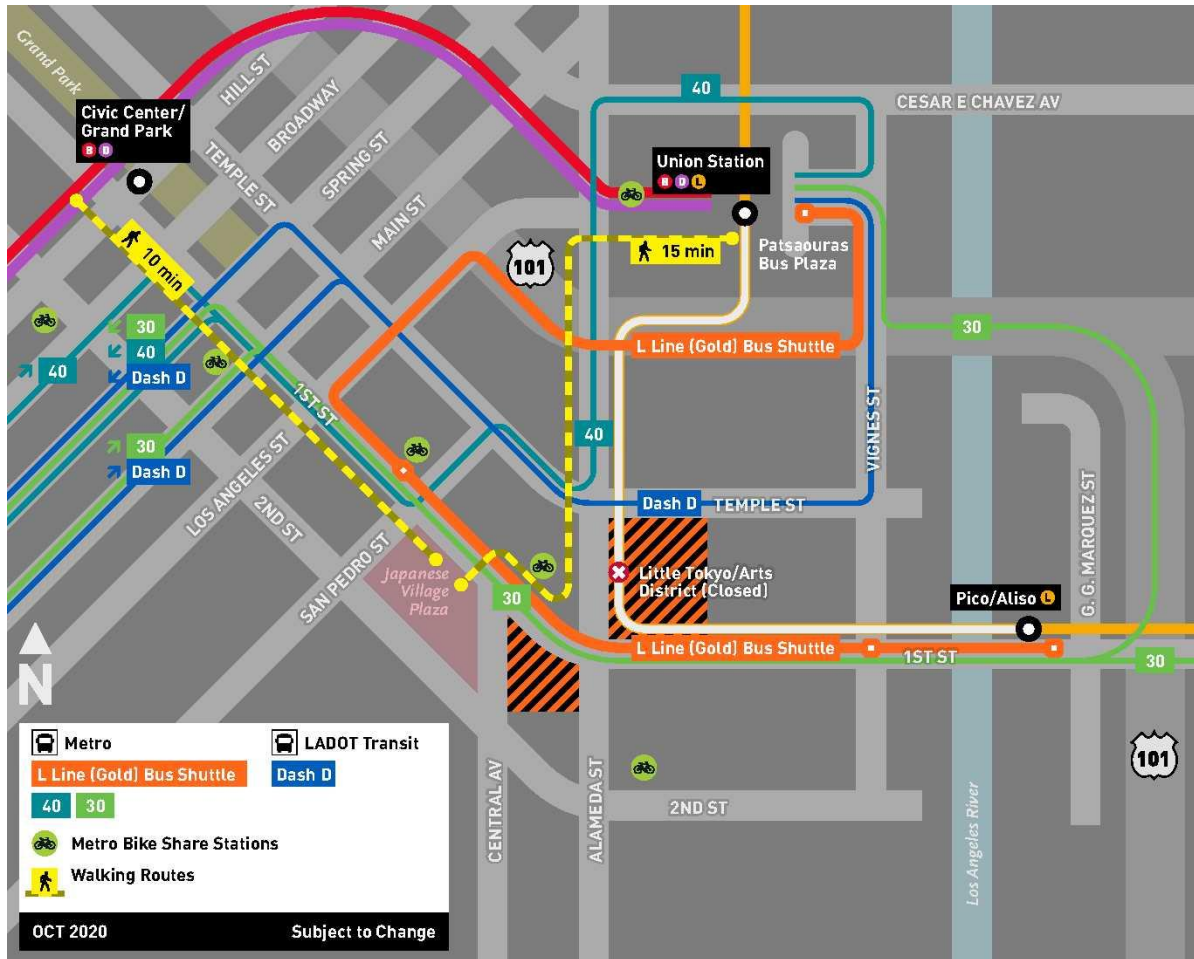
Activity	Little Tokyo/Arts District	Historic Broadway	Grand Av Arts/Bunker Hill	Flower St/Financial District
<b>Construction</b> > Stations	Concludes early 2023			
<b>Civil Restoration</b> > Sidewalks, final paving & striping, tree planting, lighting, etc.	Early 2023	Early 2023	Early 2023	Early 2023
<b>L Line (Gold) service interruption</b>	Concludes early 2023	–	–	
<b>Testing</b>	Concludes early 2023			
<b>Revenue Operations</b>	Early 2023			

# Rail Activation Activities

- Regional Connector system integration to the operational system of the E (Expo), A (Blue), and L (Gold) is nearing 100 percent completion
- Pre-revenue service testing will continue with 22-hour train testing and operator training
- Intermittent fire alarm, ventilation and audio tests at all stations is anticipated to continue
- California Public Utilities Commission (CPUC) certification is required to open the line for revenue operations



# L Line (Gold) Bus Shuttle Continues During Train Testing Activities



## Regional Connector Transit Project

Little Tokyo/Arts District Station

L Line (Gold) Shuttle Continues and Train Testing Begins

February 14, 2023

SUMMARY	ESSENTIALS	WHAT TO EXPECT
<p>Metro has built a rail line that will provide riders a seamless journey from Azusa to Long Beach and from East Los Angeles to Santa Monica, through the downtown LA core.</p> <p>The free bus shuttle will continue to replace the L Line (Gold) service through the beginning of 2023. Shuttles will serve Union Station, Little Tokyo/Arts District, and Pico/Aliso stations in both directions.</p> <p>L Line (Gold) Bus Shuttle will:</p> <ul style="list-style-type: none"> <li>Run approximately every 12-minutes</li> <li>Display destination on Head Sign</li> <li>Operate during same hours as train: Mon-Sun: 4 am – 1 am</li> </ul>	<p>Rail services from Union Station to Azusa and from Pico/Aliso to East Los Angeles will continue their regular operating schedule.</p> <p><b>NOTEWORTHY</b></p> <p>While traveling on the system please keep these safety tips in mind:</p> <ul style="list-style-type: none"> <li>Look and Listen for trains in both directions</li> <li>Never walk on or around train tracks</li> <li>Obey all warning signals and signs</li> </ul> <p>Remember, safety begins with me.</p>	<p>Metro is currently testing the new systems on the L (Gold), A (Blue) and E (Expo) lines.</p> <p>Trains will go out-of-service at Union Station, Pico/Aliso, and 7th St/Metro Center and continue to downtown Los Angeles in both directions.</p> <p>All passengers will exit the train at Union Station, Pico/Aliso, and 7th St/Metro Center stations.</p>

Gold continues along current Expo Line route to Santa Monica.

Blue continues along current Expo Line route to Long Beach.

Gold continues along current route to East LA.

### CONTACT US

213-922-7277

[regionalconnector@metro.net](mailto:regionalconnector@metro.net)

[metro.net/regionalconnector](https://metro.net/regionalconnector)

[twitter.com/metroconnector](https://twitter.com/metroconnector)

[facebook.com/metroregionalconnector](https://facebook.com/metroregionalconnector)

Emergency access will be maintained.

Construction may result in changes to bus routes or stop locations. Metro will post signs at affected stops to advise of alternative boarding locations. Real-time information available at [metro.net/service/advisories](https://metro.net/service/advisories) or 311.COM.METRO.

Construction is a dynamic process and information is subject to change without notice. Work activity is subject to weather conditions.

# Rail Safety & Mobility Programs

Metro's Rail Safety & Mobility Programs Team is responsible for increasing transit safety awareness and providing education to residents of Los Angeles County who interact with Metro's public transportation system through various safety programs. This includes safety on Metro's rail lines, bus system, and bicycles.



Metro Rail Safety & Mobility Programs Team is mandated by the CA Public Utility Commission to provide education to communities within in light rail lines. This includes A Line, E Line, L Line and K Line.

# Rail Safety & Mobility Programs

## Outreach:

- RSP team provides outreach to:
- K-12 schools within a .5 mile radius of light rail lines
- Community & Recreation Centers within a 1.5 mile radius
- Libraries within a 1.5 mile radius
- Senior Centers within a 1.5 mile radius



# Rail Safety Programs Offered



## Rail Safety Workshop

- Line Specific Information (A, E, L Rail Lines)
- Train Safety
- Utilizing the Metro System



## Virtual Rail Safety Orientation Tour of Union Station

- History of Union Station
- Transit Located at Union Station
- Future of Union Station



## Virtual B (Red) Line Destination Tour

- Overview of Metro System
- Specific Destinations along B – Line
- How to Ride Metro



Metro®

# Rail Safety Programs Offered



Obey All Traffic Signs and Signals



# Outreach Opportunities

**Please consider inviting the RSP Team to participate in:**

- Local Community Events
- School Career Days
- Back to School Nights
- Incorporate Metro when teaching Sustainability, Engineering or Mechanics
- Parent Meetings and Workshops
- Coffee with the Principal Meetings

\*All activities above can be conducted in person or via virtual platforms

# Rail Safety Advisors

## RSA's Responsibilities

- Observe and record behaviors of pedestrians and motorists around grade crossings
- Explain safe practices to the public
- Distribute safety materials
  - To date they have distributed an estimate 1k take ones



# Activities Look Ahead

Location	Date	Access
<b>Little Tokyo/Arts District</b>		
Full street closure <ul style="list-style-type: none"> <li>Alameda St, from 1st St to Temple St</li> </ul>	<ul style="list-style-type: none"> <li>7 am Friday, 6/2 to 7 pm Sunday, 6/4</li> </ul>	<ul style="list-style-type: none"> <li>Local access maintained.</li> <li>Thru traffic use alternative routes: Temple St, 2nd St, Vignes St</li> </ul>
<b>Historic Broadway</b>		
Full street closures <ul style="list-style-type: none"> <li>2<sup>nd</sup> St, from Broadway to Spring</li> <li>Broadway, 1st St to 3rd St</li> </ul>	<ul style="list-style-type: none"> <li>In place thru May 29, 2023</li> <li>9-weekend intersection closures, Friday – Monday: <b>*Dates are subject to change*</b> <ul style="list-style-type: none"> <li>4/28, 5/5, 5/12, 5/19</li> </ul> </li> </ul>	<ul style="list-style-type: none"> <li>Local access maintained</li> <li>Thru traffic on Broadway use alternative routes: Spring St, Main St, Hill St, 1st St, and 3rd St</li> </ul>

# Activities Look Ahead

Location	Date	Access
<b>Grand Av Arts/Bunker Hill</b>		
Full directional closures <ul style="list-style-type: none"> <li>3<sup>rd</sup> St/Flower St southwest corner</li> </ul>	<ul style="list-style-type: none"> <li>Monday, 4/10 – Friday, 4/28, 6 am -3:30 pm</li> </ul>	<ul style="list-style-type: none"> <li>Thru access maintained on Flower St and 3<sup>rd</sup> St</li> <li>Intermittent left turn restriction, 3<sup>rd</sup> to Flower</li> <li>Access to driveways will be maintained</li> </ul>
<ul style="list-style-type: none"> <li>Northbound Hope St, GTK Wy to 2nd St, pedestrian bridge work</li> </ul>	<ul style="list-style-type: none"> <li>Monday, 4/24/23 – Friday, 6/2 6 am to 3:30 pm</li> </ul>	<ul style="list-style-type: none"> <li>Access maintained on Southbound Hope St, between 2nd St and 3rd St</li> <li>Detour: NB Hope St traffic will be detoured EB on GTK Way, to NB Olive St, to WB 1st St, back to Hope St.</li> </ul>
Lane reductions (Not concurrent) <ul style="list-style-type: none"> <li>3<sup>rd</sup> St, from Hill St to Figueroa St</li> <li>GTK Way, from Hope St to Flower St</li> <li>SB Flower, from 1<sup>st</sup> St to 3<sup>rd</sup> St</li> <li>NB Flower St, from 3<sup>rd</sup> St to 1<sup>st</sup> St</li> </ul>	<ul style="list-style-type: none"> <li>Monday, 5/1/23 – Friday, 6/2/23 6 am to 3:30 pm</li> </ul>	<ul style="list-style-type: none"> <li>Thru access will be maintained.</li> </ul>
<b>Flower St/Financial District</b>		
Lane reductions and freeway off-ramp closures <ul style="list-style-type: none"> <li>6<sup>th</sup> St, from Figueroa St to Hope St</li> <li>SB and NB I-110 off-ramps at 6<sup>th</sup> St</li> </ul>	<ul style="list-style-type: none"> <li>Friday, 6/9 – Wednesday, 6/14, around the clock closure.</li> </ul>	<ul style="list-style-type: none"> <li>Thru access will be maintained.</li> <li>Freeway traffic will be detoured to the next available off-ramp.</li> </ul>

# Civil Improvements: Flower St/Financial District



# Community Outreach and Engagement



Construction notices



Stakeholder briefings



Door-to-door distribution within ½ mile radius



Email notice distribution



Posting on Next Door



Postings on Facebook and Twitter



Waze map integration

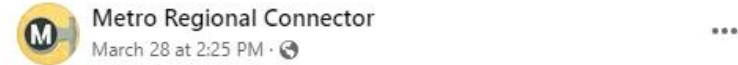


Project website

# Up to Date Construction Progress on Social Media



Did you know that these are called free-standing map cases? The information placed in these cases help riders get to where they need to go on the Metro system. A map in these new shiny cases will display the new A and E alignment. Next stop: Grand Av Arts/Bunker Hill Station!



Concrete was placed on the ADA curb ramp on the SW corner of 3rd St/Flower St. The concrete placement is part of sidewalk restoration and civil improvements along Flower St.

Upcoming activities around the Grand Av Arts/Bunker Hill Station include directional closures on Hope St and 2nd St. You can find the most up-to-date information here: <https://bddy.me/3zbCVBB>



# Stay Connected



213-922-7277



regionalconnector@metro.net



metro.net/regionalconnector



facebook.com/metroregionalconnector



@metroconnector

# Questions?



# Eastside Access Improvements Project (TIGER Grant)

# Meet the Team

Kurt Turley,  
Construction  
Project Manager

Olga Arroyo,  
Community  
Relations  
Manager

Katrice Candler,  
Principal  
Community  
Relations Officer



# Project Overview

The Eastside Access Improvements will implement streetscape, pedestrian safety and bicycle access improvements within a ½mile radius around the future Metro Little Tokyo/Arts District Station at 1<sup>st</sup>/Central.



Walk/Bike Esplanade



Wayfinding Signage



Class II BikeLanes



Crosswalk Installation



Storm Parkways  
(Biowales)



Decorative Crosswalk  
Restoration



Street Trees



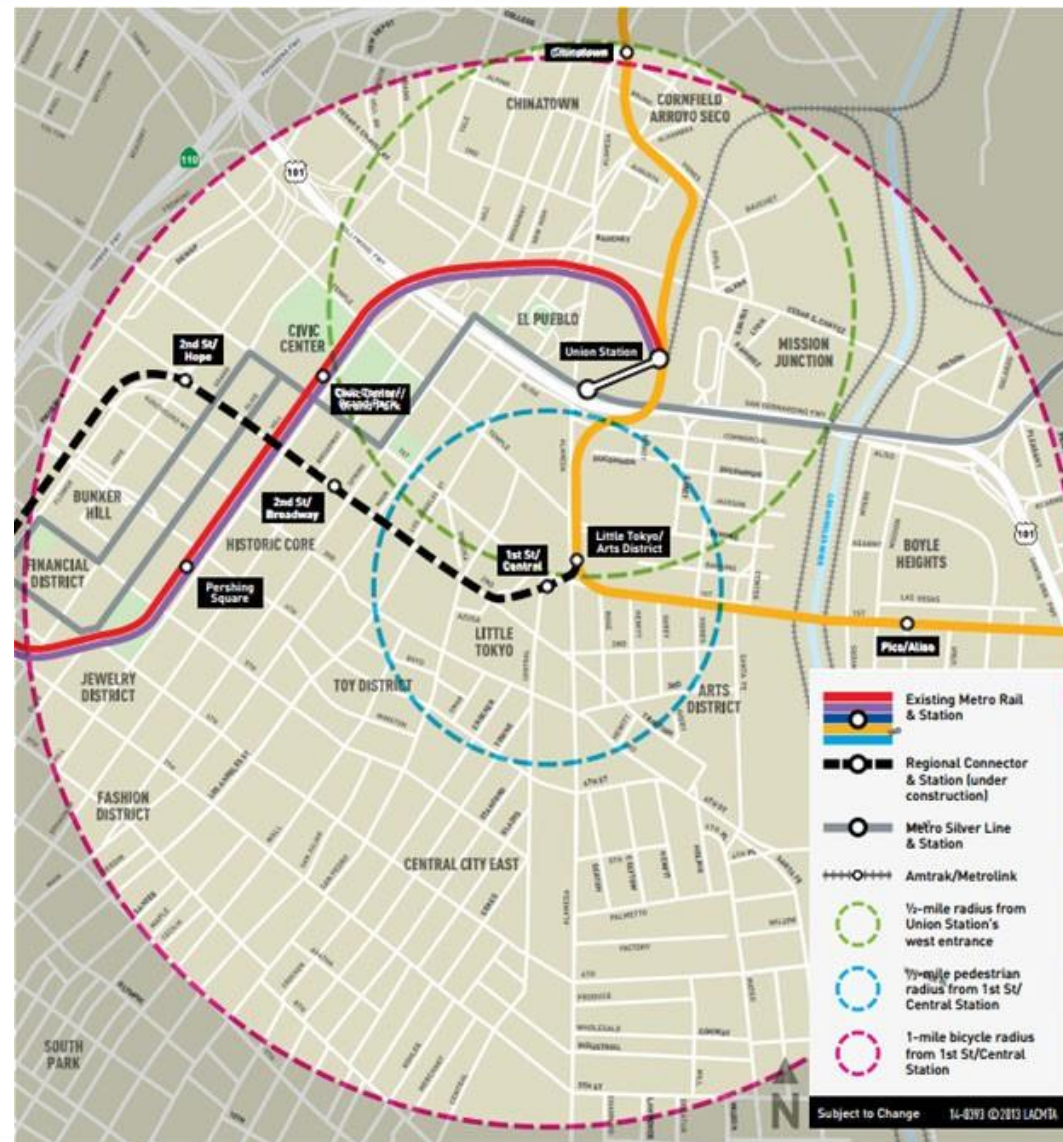
Street Furniture  
Restoration



Street Light LED  
Conversion

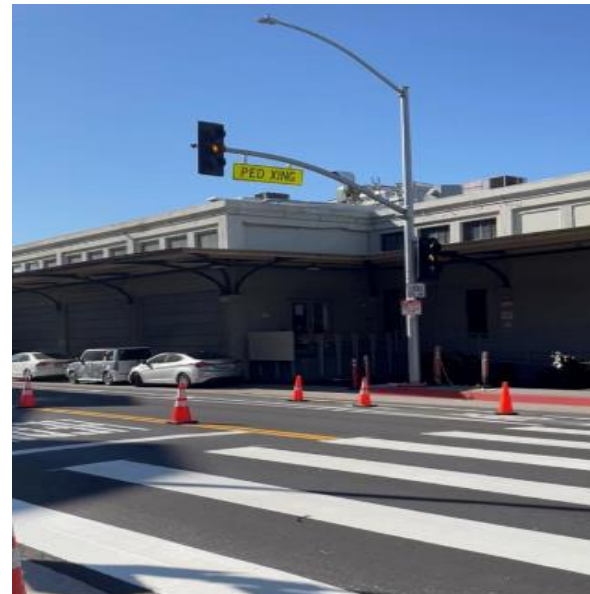


ADA CurbRamp  
Installation



# Project Timeline / Completed Activities

- March 18, 2021
  - Metro Board of Directors approved project budgeted, \$29.7 million
- September 2021 to End of April 2023
  - Construction Duration.
  - This does not include Alameda Esplanade



# Hashimoto Plaza / Azusa St Completed Activities

- Two (2) Planters and Trees removed in Hashimoto Plaza
- Kiosk removed in Hashimoto Plaza
- Brick Paver Repair in Hashimoto Plaza and Azusa St
- Azusa St wall and bollards painted on Azusa St
- Trees installed in designated areas in Little Tokyo community
- Time capsule and monument excavated and handed to Little Tokyo community



# Three Trees Installed



# Hashimoto Plaza

Metro returns  
historic monument  
and time capsule to  
Little Tokyo  
Community



# Activities – Look Ahead

Date	Type/s of work	Access
Ongoing	Alameda Esplanade Construction	<ul style="list-style-type: none"><li>• Thru traffic will be maintained</li></ul>
TBD	Wayfinding Signage Installation	<ul style="list-style-type: none"><li>• Thru traffic will be maintained</li></ul>
TBD	Lighting at Hashimoto Plaza	<ul style="list-style-type: none"><li>• Thru traffic will be maintained</li></ul>

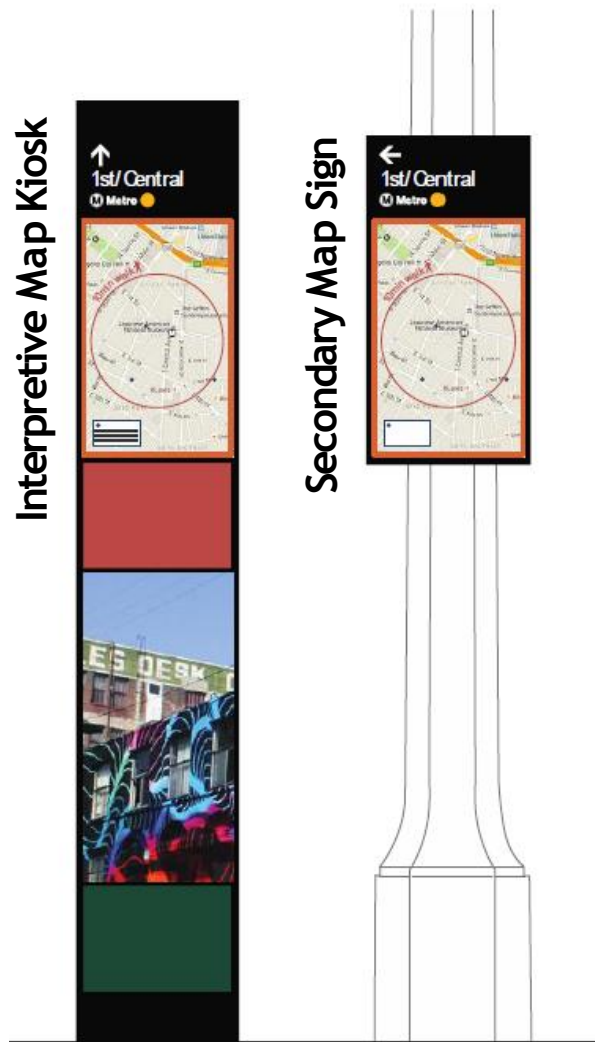


# Segment 2: Alameda Esplanade



Alameda St at 1st St, looking north

# Wayfinding Signage Design



## Interpretive Map Kiosks

- > 10 kiosks: (8) Little Tokyo (2) Arts District
- > Dimensions: 6'8" x 1'2" x 8"
- > Eight static graphic panels per kiosk, may vary per location
- > Installation on city sidewalk

## Secondary Map Signs

- > 23 signs: (18) Little Tokyo (5) Arts District
- > Dimensions: 2'4" x 1'2" Sign
- > Installation on existing streetpoles

## Signage Design

- > Panel content completed
- > Anti-graffiti coating

*\*Graphic Design subject to community input*



# Stay Connected



213.922.1111



centrallaprojects@metro.net



[www.metro.net/eastsideaccess](http://www.metro.net/eastsideaccess)



Questions?





# Metro Center Project

# Meet the Team

## Program Management

### **Albert Soliz**

Project Executive, Metro

### **Aston Greene**

EO, System Security & Law  
Enforcement

### **Vincent Chio**

Project Manager, Metro

### **Sheida Roghani**

Project Manager, Construction Support

## Amoroso – Contractor

### **Nathan Berkey**

Project Manager, Amoroso

## Community Relations

### **Olga Arroyo**

Manager

### **Katrice Candler**

Principal Community Relations  
Officer

## Art & Design

### **Mayen Alcantara**

Sr. Manager

### **Allison Porterfield**

Sr. Specialist



# Metro Center Project Overview and Purpose

- > The Metro Center Project is an essential and secured facility that support the entire Metro Bus and Rail systems across 88 cities in LA County including expansions in Measure R and Measure M projects.
- > A 26,000-square-foot one-story building, with a second-story option to be built in the future, slated to open in 2023.



Draft – Subject to Change

# Sustainability LEED Gold Certification

- > For a building with over 200 personnel, only 53 parking spaces (including 10 with electric vehicle charging) are provided on-site as Metro intends to shuttle most of the employees between Union Station and Metro Center Project with service running every 13 minutes.
- > On-site Bike racks and new bike lane on Center Street will promoting walkability
- > LED light fixtures and other energy efficiency measures
- > Drought tolerant and water efficient landscaping and use of ultra-low flow fixtures throughout the building
- > Low-impact development (LID) measures including an underground cistern for reuse of rainwater.
- > Use of recycled wood and dedicated recycling area for collection and storage of recyclables



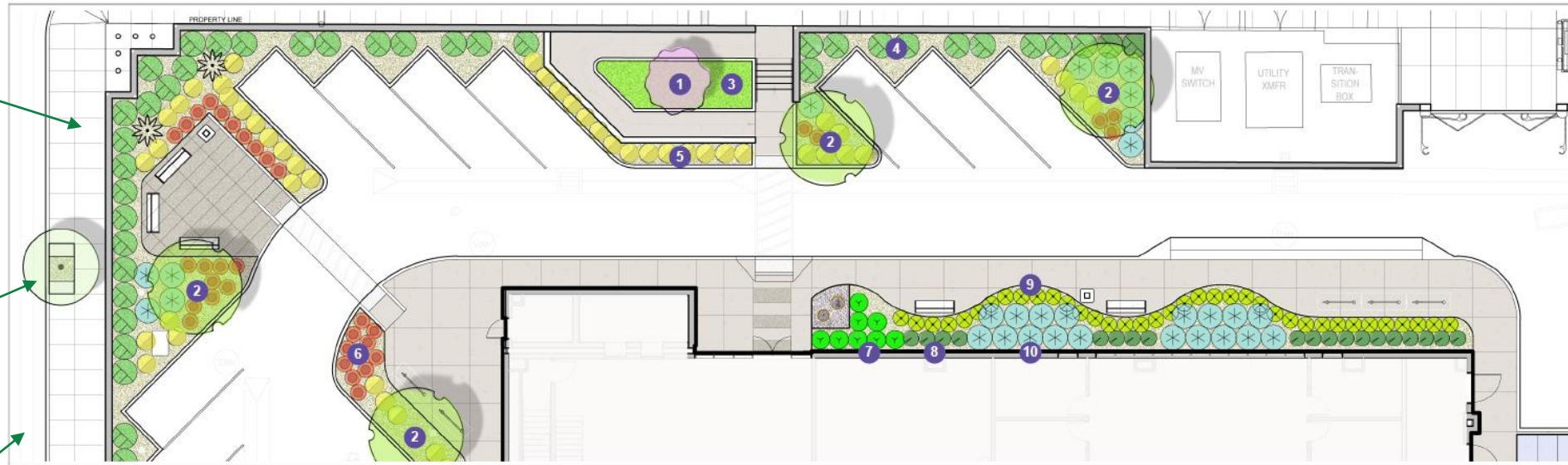
# Landscaping and Streetscape Overview

Proposed 9.5-foot-wide sidewalk with pedestrian lights

Center Street

5 new street trees ("London Plane")

New Bike Lane



1 Merlot redbud (15-20 ft tall x wide, blooms in spring)  
*Cercis canadensis 'Merlot'*



2 Desert museum palo verde (20-25 ft tall x wide, blooms spring & sometimes summer)  
*Parkinsonia x 'Desert Museum'*



3 European gray sedge  
*Carex divisa*



4 Coral glow Texas yucca (along fence)  
*Hesperaloe parviflora 'Coral Glow'*



6 Coral aloe  
*Aloe striata*



7 Cape rush  
*Chondropetalum tectorum*



8 White-striped sansevieria  
*Sansevieria 'Bartel's Sensation'*



9 Aloe vera



10 Variegated fox-tail agave  
*Agave attenuata 'Variegata'*

NORTH SIDE  
PLANTING PLAN  
SCALE: 1/8" = 1' - 0"  
0 4 8 16 ft



Draft – Subject to Change

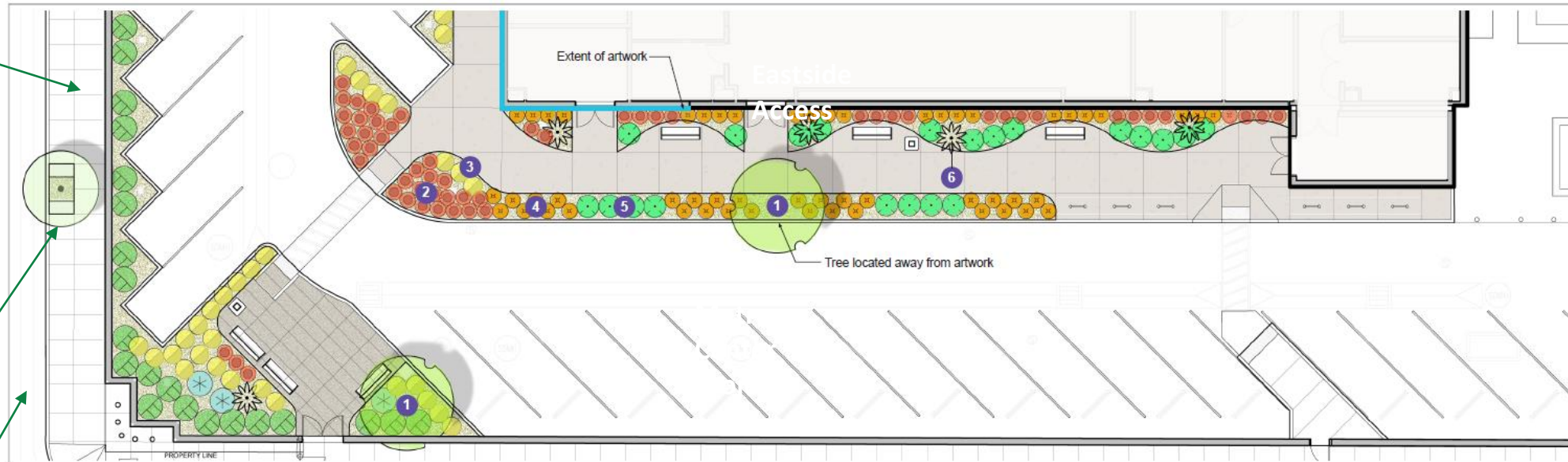
# Landscape and Streetscape Overview - 2

Proposed 9.5-foot-wide sidewalk with pedestrian lights

Center Street

5 new street trees ("London Plane")

New Bike Lane



1 Desert museum palo verde (20-25 ft tall x wide, blooms spring & sometimes summer)  
*Parkinsonia x 'Desert Museum'*



2 Coral aloe  
*Aloe striata*



3 Orange-stalked bulbine  
*Bulbine frutescens 'Orange'*



4 Safari aloe  
*Aloe 'Andora'*



5 Blue glow agave  
*Agave 'Blue Glow'*



6 Tree aloe  
*Aloe barberae*



SOUTH SIDE PLANTING PLAN

SCALE: 1/8" = 1' - 0"  
0 4 8 16 ft



Draft – Subject to Change

# Metro Center Project – Exterior Renderings

Draft – Subject to Change

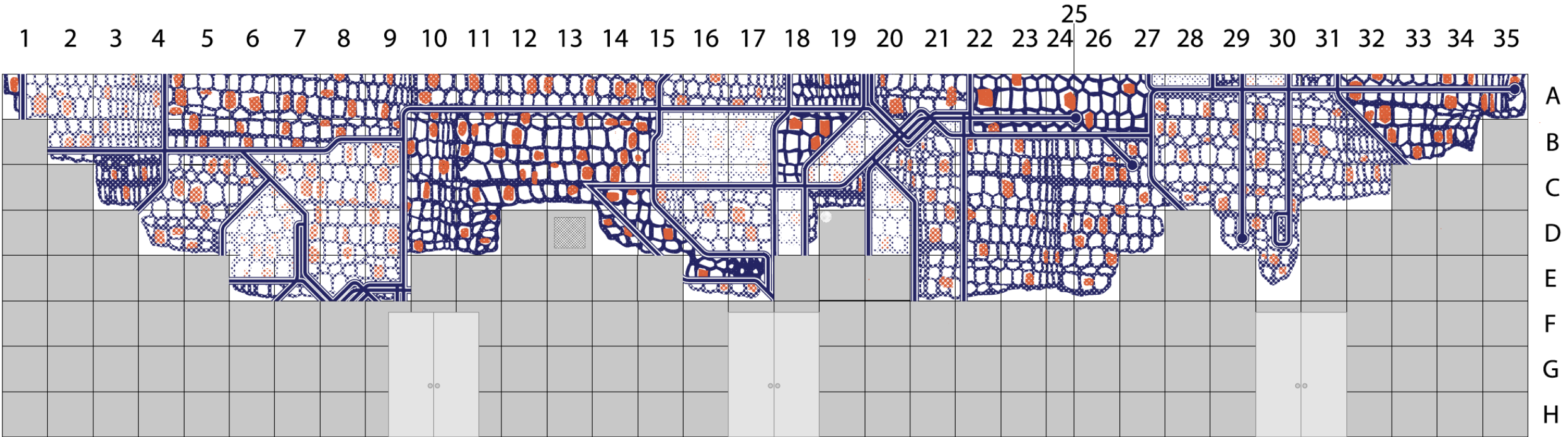


# Metro Center Project – Exterior Renderings

Draft – Subject to Change

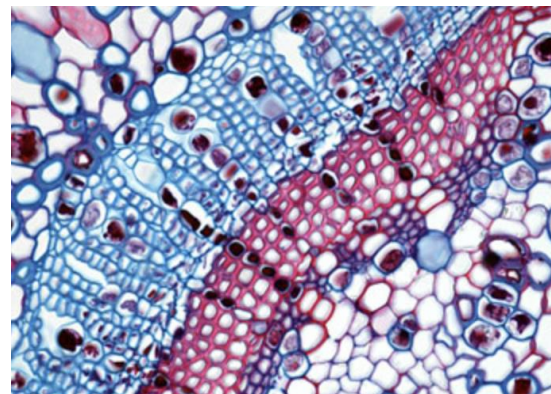


# Building Artwork: Design Renderings



Preliminary artwork rendering for MCP

- Preliminary rendering of public artwork on the Southwest building façade – view from Center and Jackson Street
- Inspired by the cellular structure of the Methuselah tree, native to California and Nevada and which at 4,789 years old is thought to be one of the oldest known living organisms in the world
- References to Metro's bus and light rail network are incorporated in the artwork design



Methuselah Tree (L), Cellular Structure (R)

# Activities Look Ahead

Date	Type/s of work	Location	Access
Late April/Early May for approximately eight (8) weeks 7 am – 5 pm, weekdays	LADWP – Power service to Metro Center Project (MCP) site	Center St between Ducommun and Jackson St	<ul style="list-style-type: none"><li>• Center St will be narrowed down to one lane only</li><li>• Traffic control devices and flaggers will direct traffic</li><li>• Thru traffic will be maintained on Center St</li><li>• The west sidewalk will be closed</li><li>• Pedestrian access will be maintained away from the closure</li></ul>
Summer 2023	Artwork panels installation	Metro Center Project (MCP) site	<ul style="list-style-type: none"><li>• Thru traffic will be maintained on Center St</li></ul>



# Metro Center Project – Exterior Renderings



Draft – Subject to Change

# Temporary Construction Banner Artwork: Selection Process, Community Engagement & Design



JACCC x SLT x Metro Art present:



## EMPTY YOUR CUP: ART ACTIVITIES

by KUNIHARU YOSHIDA & SUSU ATTAR

**EXPAND YOUR IMAGINATION,  
CONNECT OUR COMMUNITIES**

FREE PRINTABLE ART PACKET  
FOR ALL AGES!

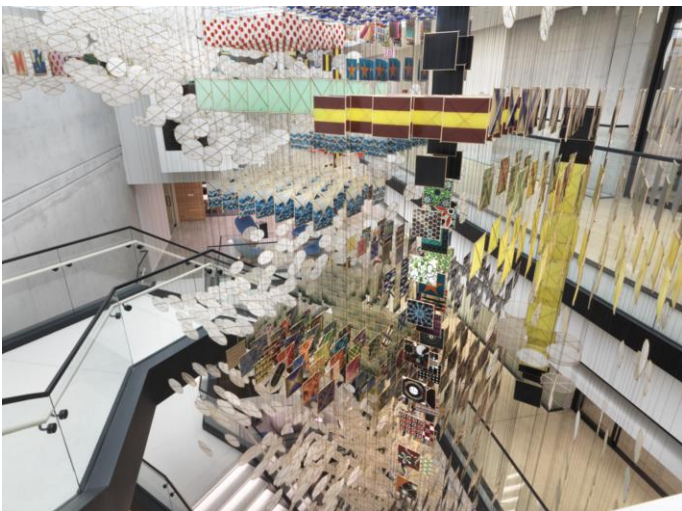


The MCP project includes a percent for art artwork on the building and temporary art on the construction banners.

# Metro Center Project Building Artwork



The artist, Jacob Hashimoto



Examples of Jacob Hashimoto's various projects



- Meet the artist and community workshops occurred at the LA Kretz Innovation Campus in 2017.
- The artist, Jacob Hashimoto, was selected via a process that included expert advisors rooted in the neighboring communities including the Arts District.
- Jacob Hashimoto's internationally recognized artwork is included in public and private collections including the LA County Museum of Art (LACMA).
- The main artwork elements will face Center Street with a segment wrapping around the corner facing Jackson Street.
- Jacob Hashimoto is developing the artwork design and has been coordinating with the project team throughout the project development.

# Temporary Construction Banner Artwork: Design Renderings



**Banner 1 rendering of view looking northeast on Center Street**



# Temporary Construction Banner Artwork: Design Renderings



**Banner 1 rendering of view looking southeast on Center Street**



# Stay Connected



213.922.1111



centrallaprojects@metro.net



[www.metro.net/centerproject](http://www.metro.net/centerproject)



# Questions?

# Next stop: improving rail service.

**DIVISION 20 PORTAL WIDENING AND TURNBACK FACILITY**

Construction Update



**Metro**

# Meet the Team

## **Community Relations**

- > **Marlon Walker**, Manager
- > **Ned Racine**, Principal Community Relations Officer
- > **Katrice Candler**, New Media Officer

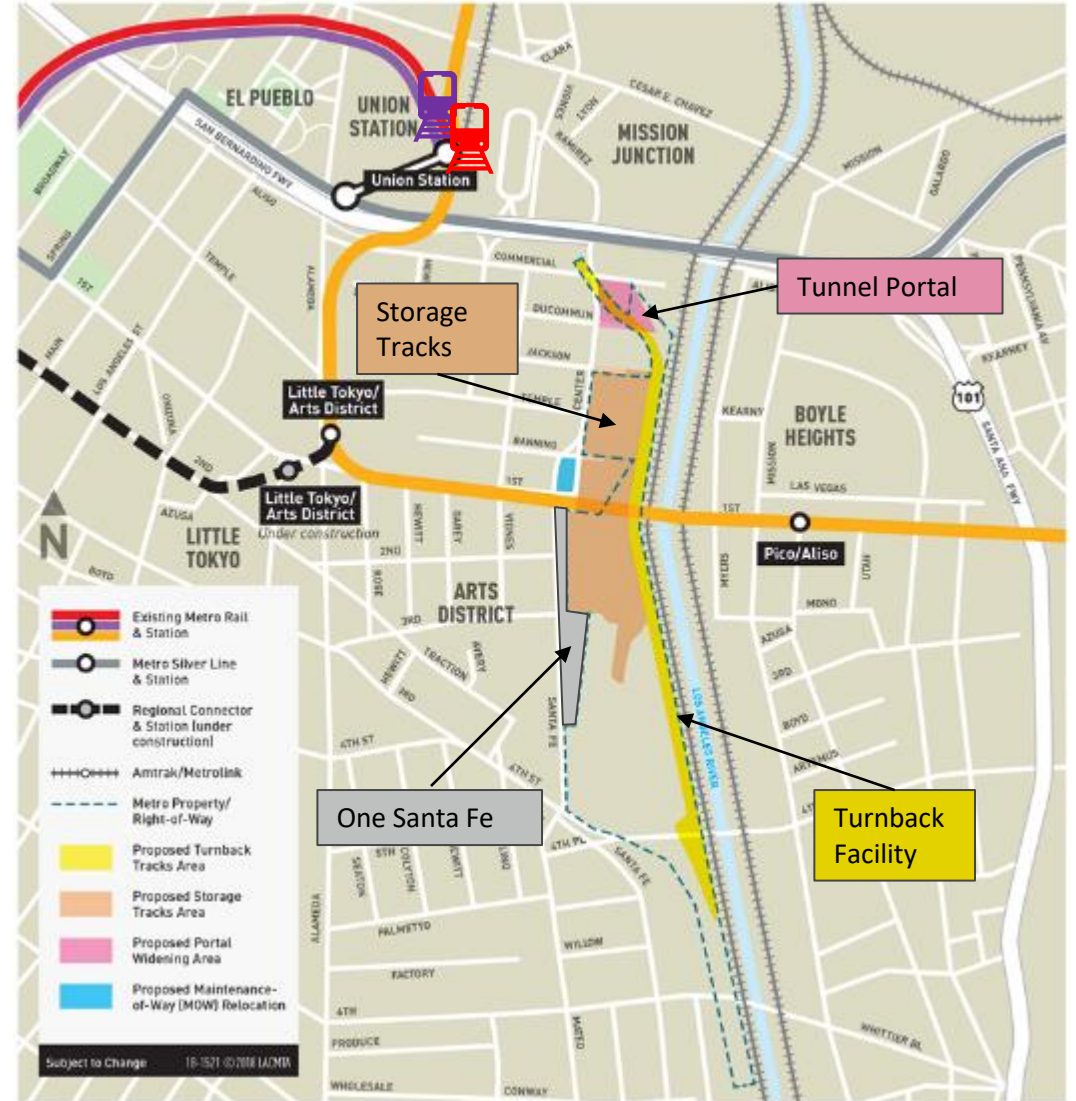
## **Contractor**

- > **Joanna Amador-Dempsey**, Construction Communications Coordinator

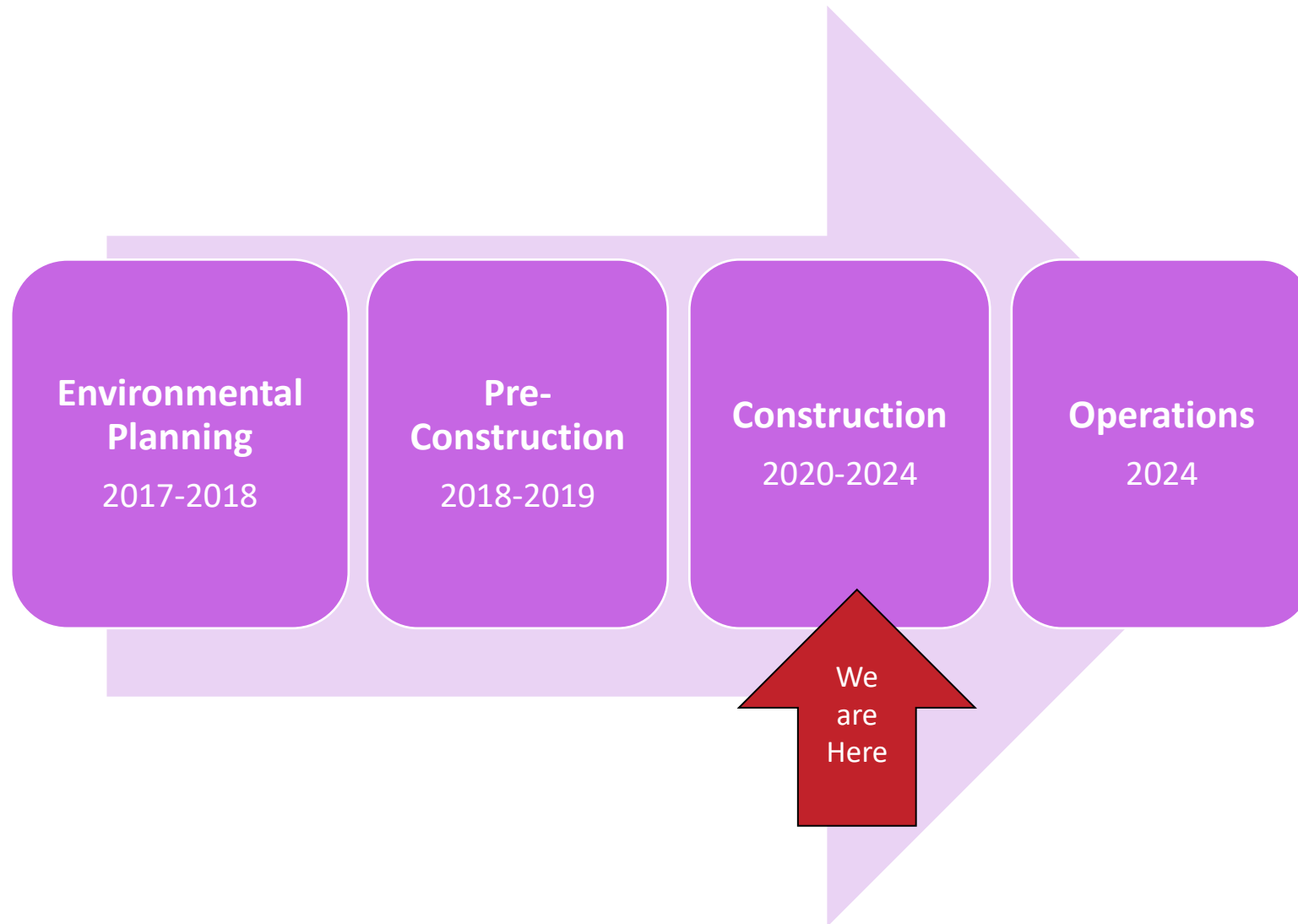


# Project Overview

- Improvements to Metro's Division 20 Rail Yard will provide faster and more frequent service on the Metro Red and Purple (B and D) Lines
- Improvements include
  - Widening of heavy rail portal
  - New turnback facility
  - Expansion, reconfiguration of rail storage tracks



# Project Timeline

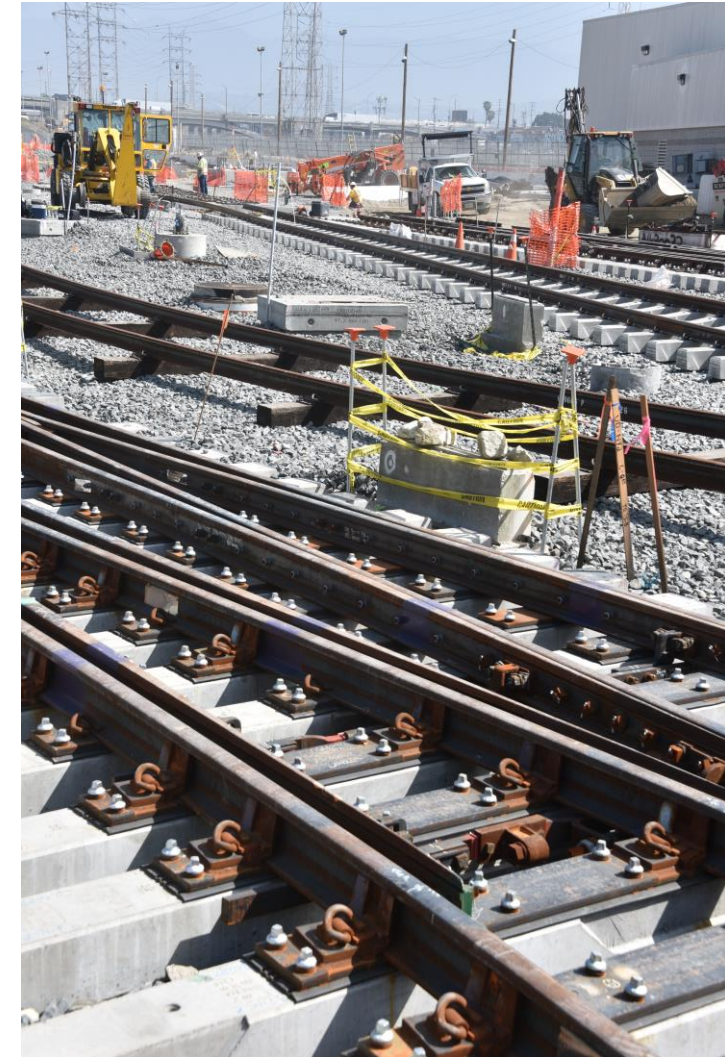


# Current Work: North Yard

Adding and moving utilities supports additional tracks for more rail car storage, including:

- Domestic waterline under Banning St
- Fire water lines
- Lighting duct banks
- Main storm drain
- Retaining wall near Commercial St

Looking northeast from the North Yard reveals a world of new rail and ballast.



# Current Work: Portal Area

## Portal Widening

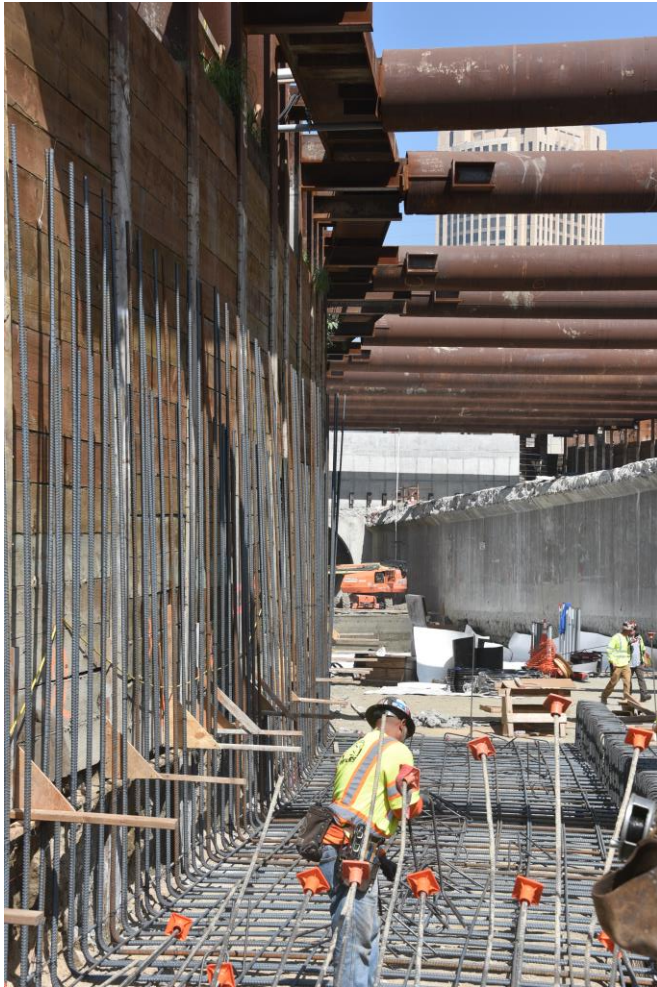
Once the portal is expanded from two to four tracks, the turnaround time for subway cars from the rail yard to Union Station will shrink.

The portal demolition began November 2022. The current work focuses on the western side of the wall after tracks have been removed.



The highlighted concrete wall will soon be demolished. The western wall has already been demolished. Once these walls are removed, two additional tracks will be added south of the portals.

# Current Work: Portal Area



Current view of the portal area (looking north). The false work and rebar work begin to form a new wall and foundation. You can see the Metro headquarters building above the walers.

# Current Work: Portal Area



Concrete pours form the west side of the portal wall near the entrance to the tunnel.

# Current Work: 1st Street Bridge

The 1st Street Bridge modifications were completed March 2023. They will provide more structural support, enabling more tracks to run under the bridge.

**Before**



**After**



# Current Work: South Yard

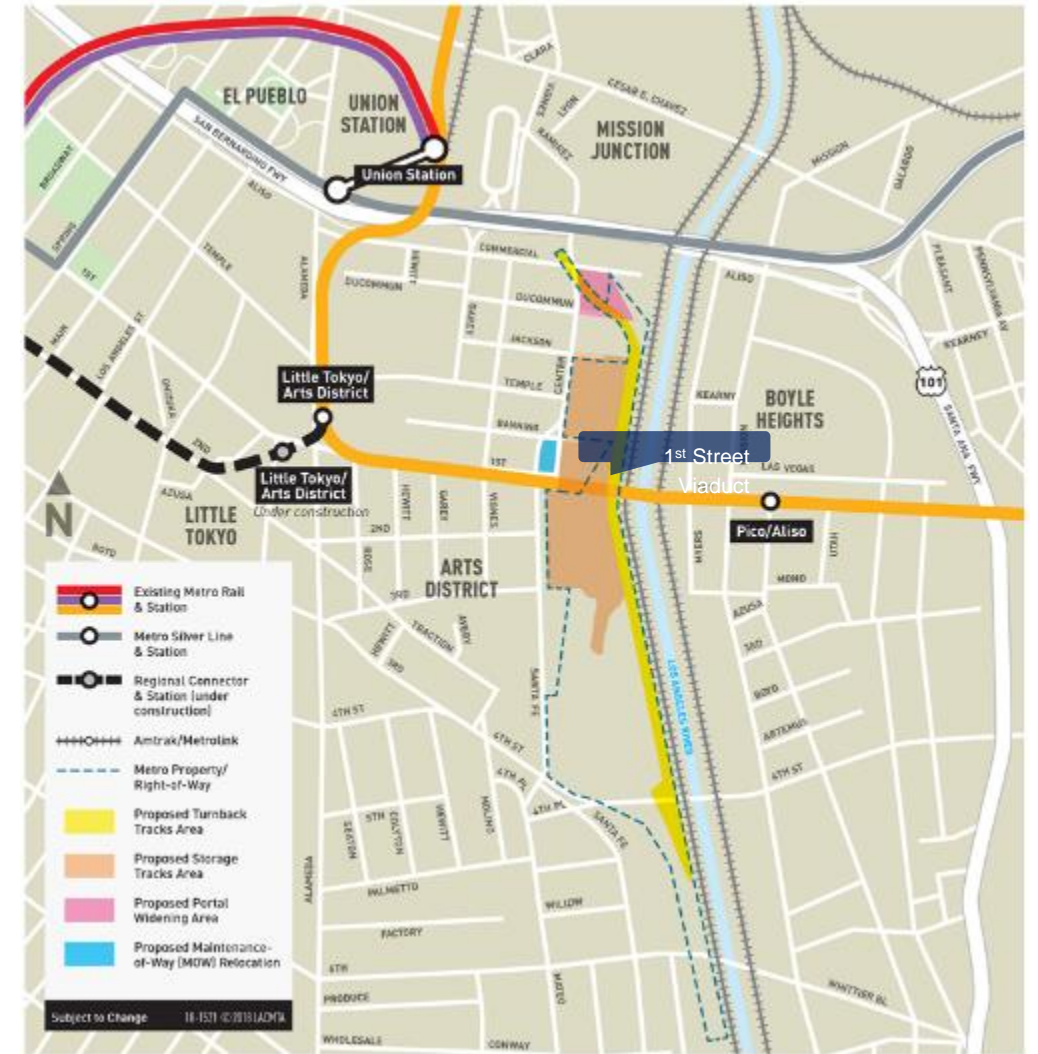
Current state of the new traction substation that will electrify the rails. This platform will house buildings that will protect power within the yard.



# Upcoming Work

*\*Work is subject to change*

- Begin dewatering at the portal
- Continue to demolish portal walls and tracks
- Continue upgrading train communication systems
- Complete portal foundation and walls
- Install track and contact rails
- Installation utilities



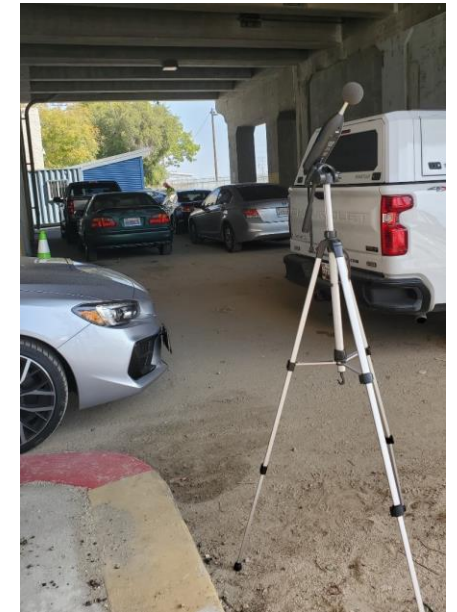
*Exact location of turnback tracks and storage tracks to be determined.*

# Construction Mitigations

## Best practices on the Division 20 construction site

- Equipment and staging areas shall be located away from noise-sensitive receivers, and noise barriers should be used when possible.
- Minimize use of high-impact devices such as jackhammers and hoe rams.
- Utilize lower impact devices such as concrete crushers and pavement saws.
- Refrain from idling equipment.
- Use frequent watering to reduce dust.

Watering truck east of One Santa Fe reduces dust.



Workers monitor noise as excavation in the south yard continues.

# Stay Connected



213.922.6934



div20portalwidening@metro.net



[www.metro.net/divison20](http://www.metro.net/divison20)

Questions?

# Central Los Angeles Projects: Next Meeting

> Let us know your thoughts

> [Survey](#)



> Our next meeting: Wednesday, June 28, 2023



**213-922-1111**



**Centrallaprojects@metro.net**

