

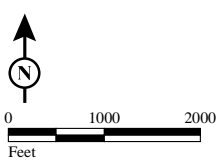
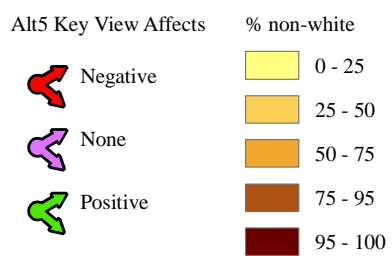
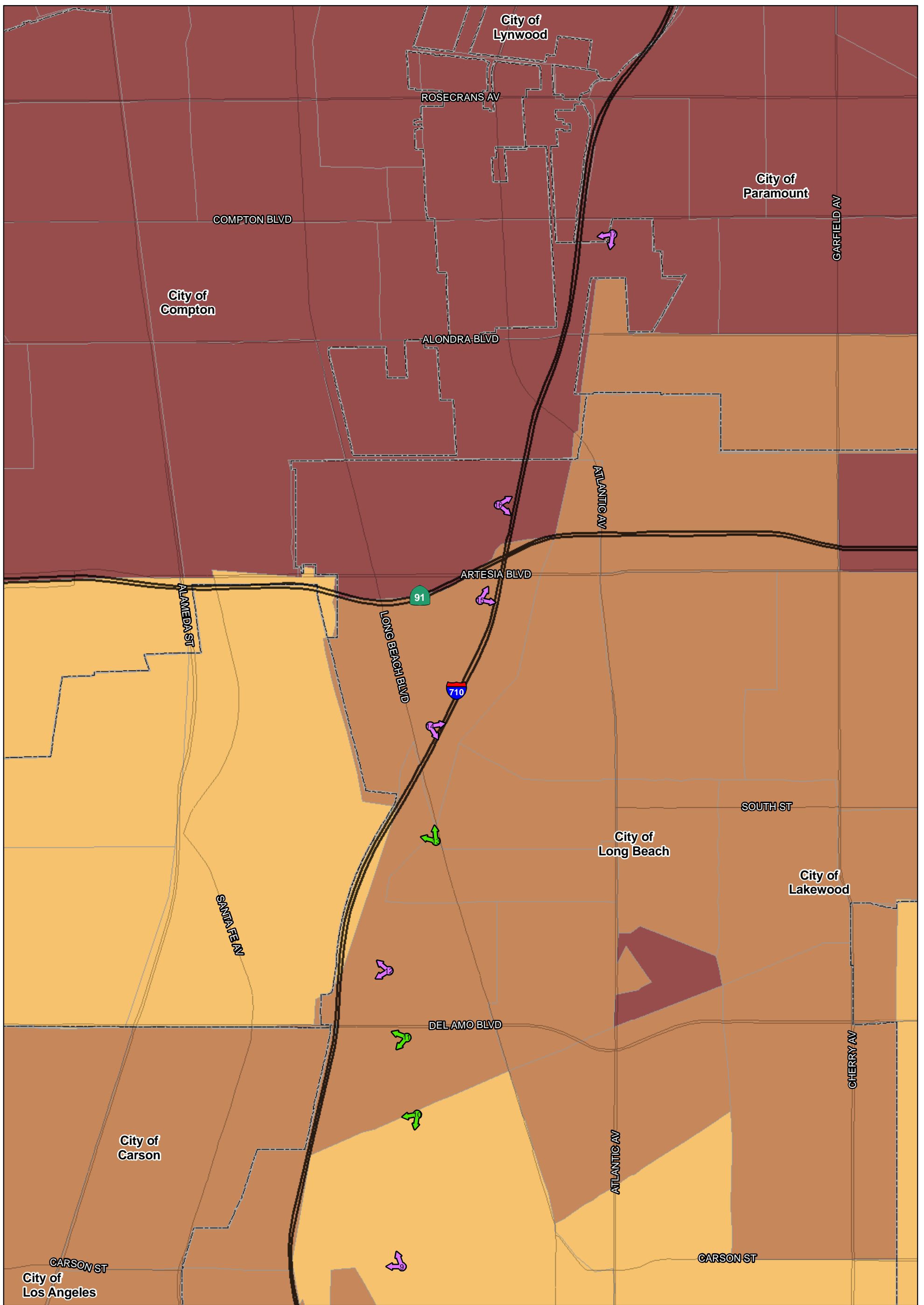
SOURCE: TBM (2007); SCAG (2008)

I:\URS0801A\GIS\EJ\Pct\_non-white\_35\_keyviews\_ALT5.mxd (9/30/11)

FIGURE  
Sheet 1 of 4

I-710 Corridor Project

Percent non-white - 2035



SOURCE: TBM (2007); SCAG (2008)

I:\URS0801A\GIS\EJ\Pct\_non-white\_35\_keyviews\_ALT5.mxd (9/30/11)

FIGURE  
Sheet 2 of 4

I-710 Corridor Project

Percent non-white - 2035

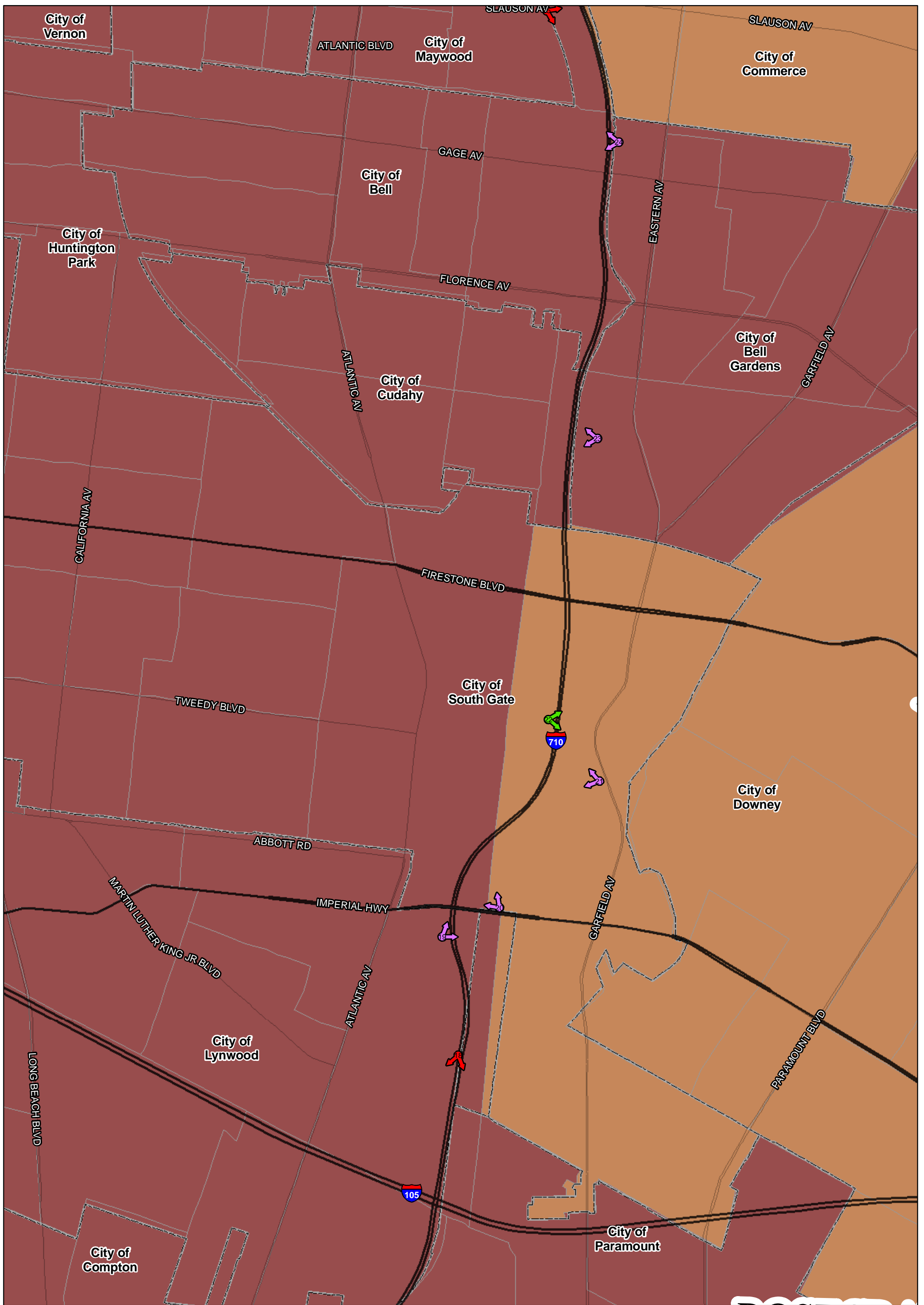
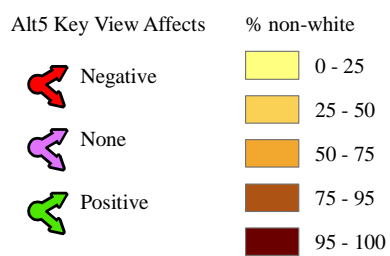
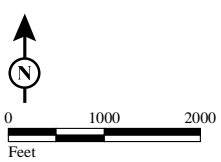


FIGURE  
Sheet 3 of 4

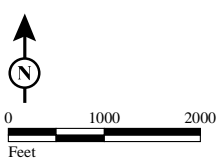
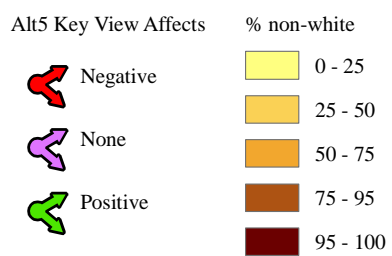
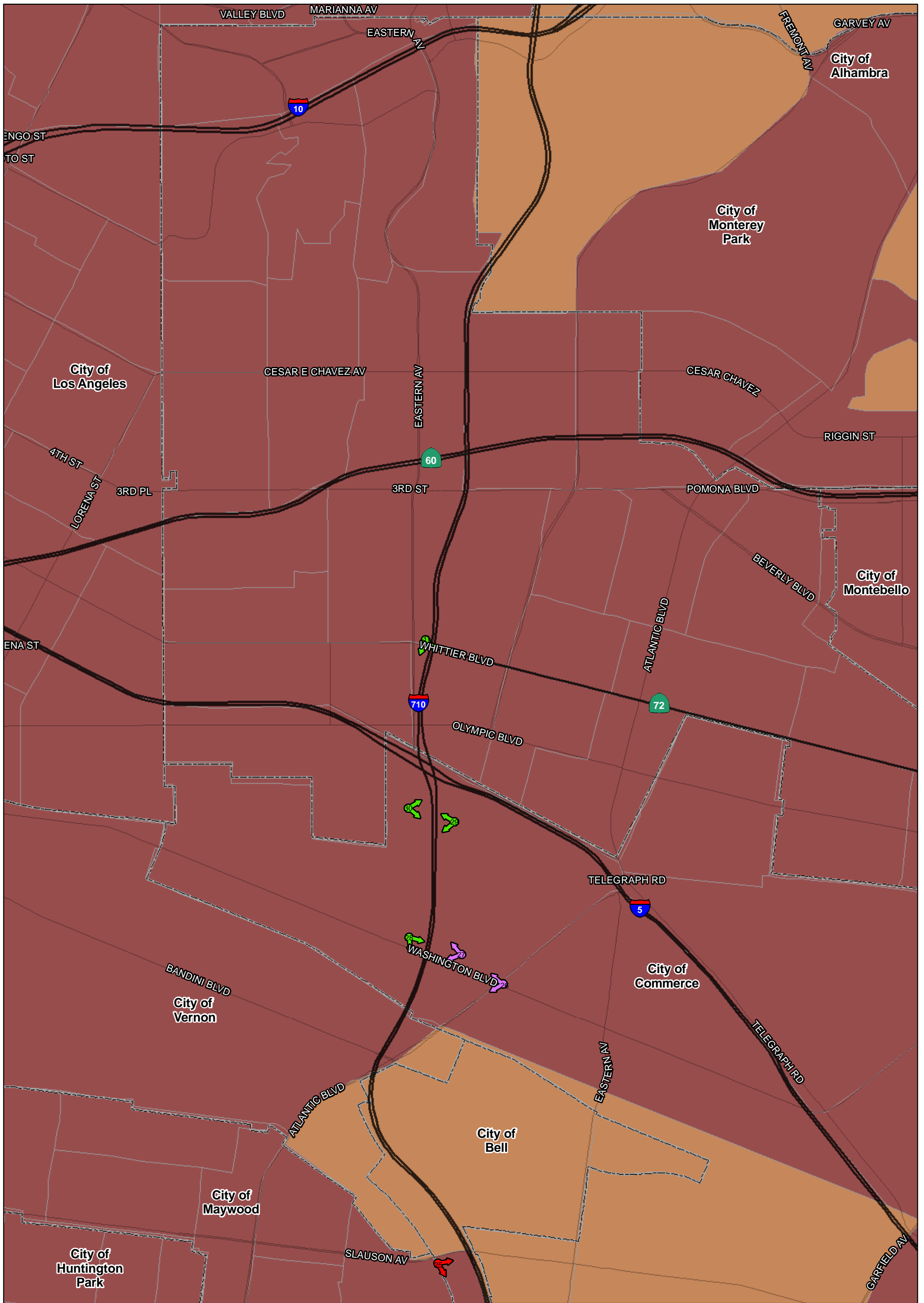


SOURCE: TBM (2007); SCAG (2008)

I:\URS0801A\GIS\EJ\Pct\_non-white\_35\_keyviews\_ALT5.mxd (9/30/11)

I-710 Corridor Project

Percent non-white - 2035



SOURCE: TBM (2007); SCAG (2008)

I:\URS0801A\GIS\EJ\Pct\_non-white\_35\_keyviews\_ALT5.mxd (9/30/11)

FIGURE  
Sheet 4 of 4

I-710 Corridor Project

Percent non-white - 2035