

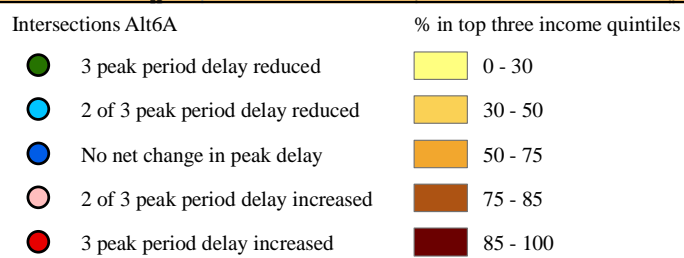
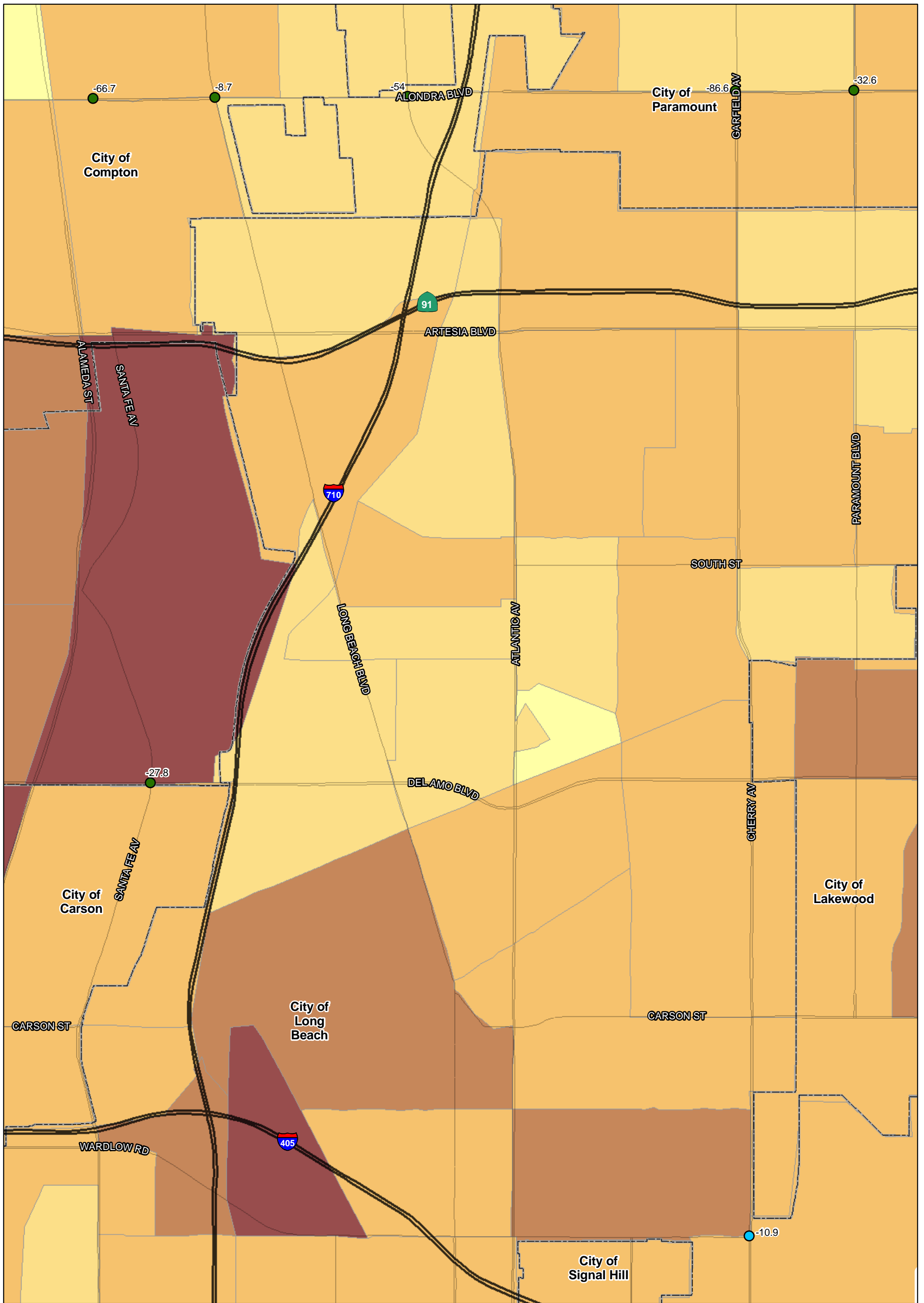
SOURCE: TBM (2007); SCAG (2008)

I:\URS0801A\GIS\EJ\Pct_Q3_Q4_Q5_35_intersections_ALT6a.mxd (10/6/11)

FIGURE
Sheet 1 of 4

I-710 Corridor Project

Percent in top three income quintile - 2035



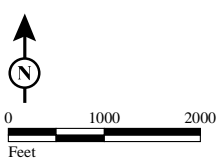
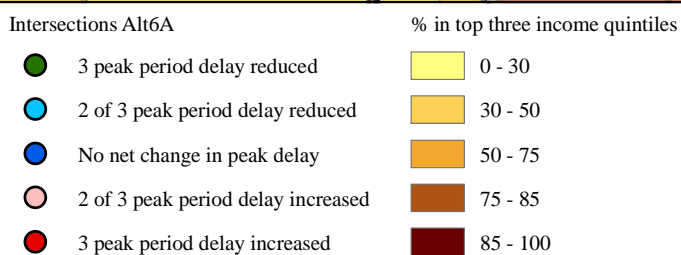
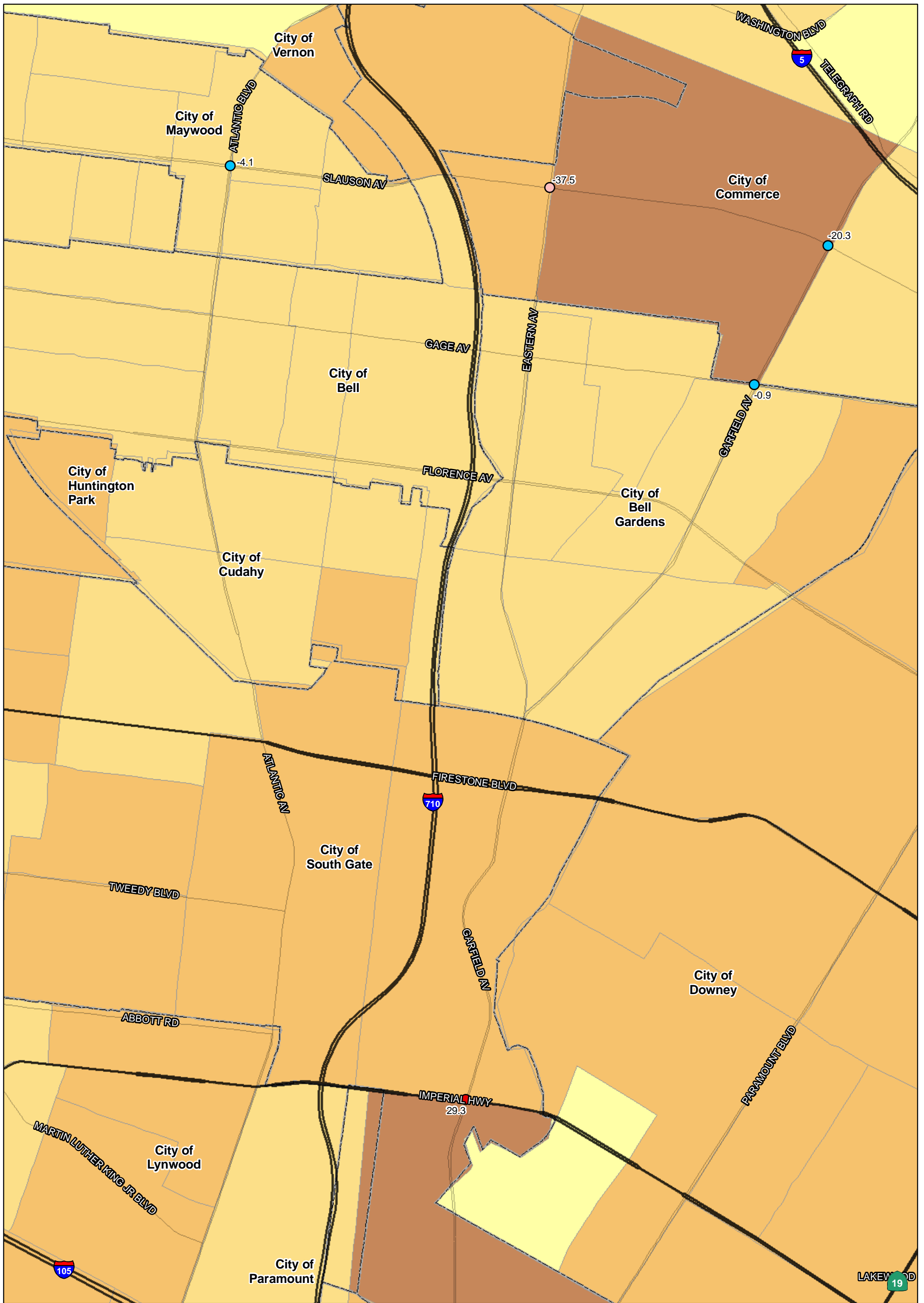
SOURCE: TBM (2007); SCAG (2008)

I:\URS0801A\GIS\EJ\Pct_Q3_Q4_Q5_35_intersections_ALT6a.mxd (10/6/11)

FIGURE
Sheet 2 of 4

I-710 Corridor Project

Percent in top three income quintile - 2035



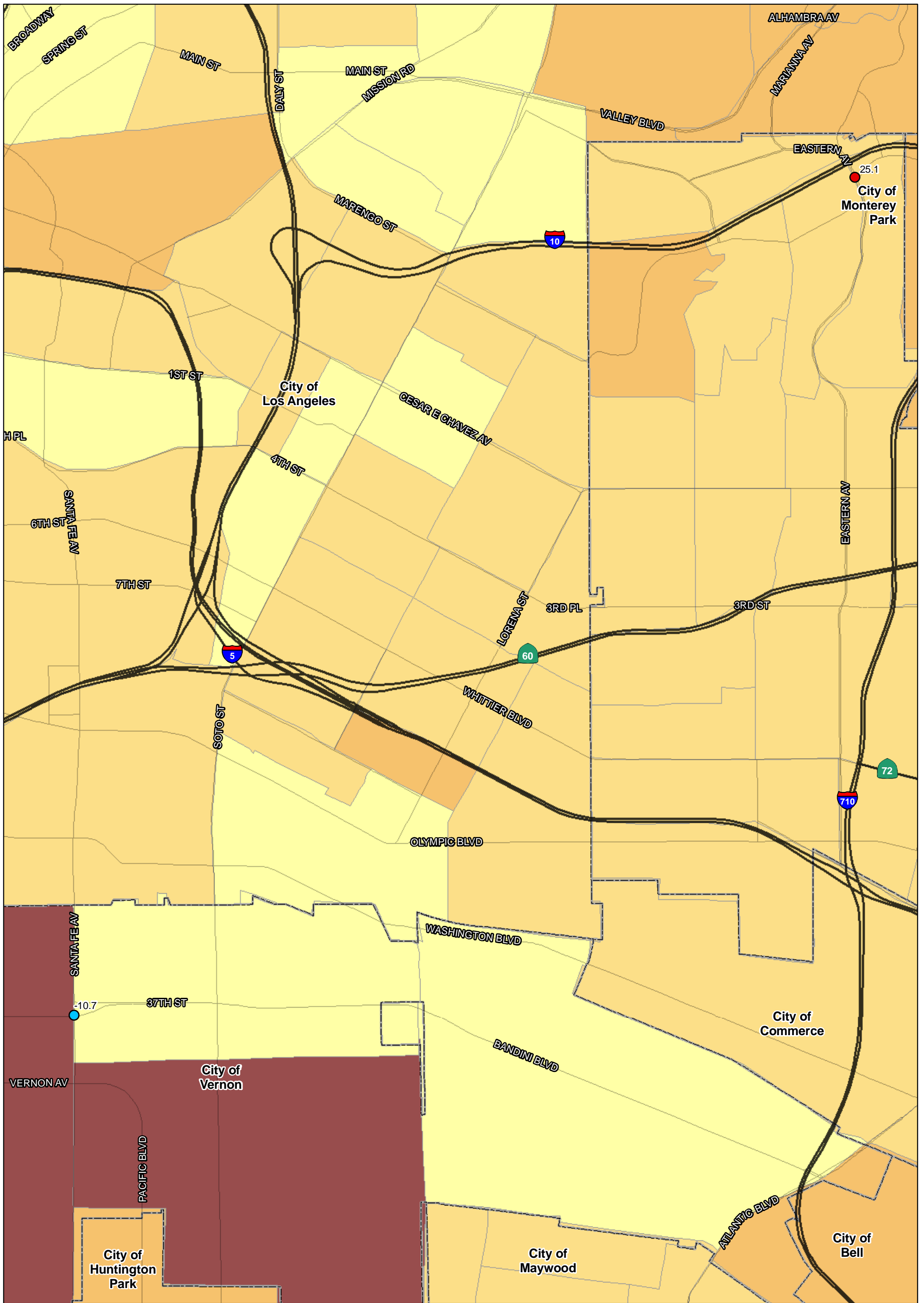
SOURCE: TBM (2007); SCAG (2008)

I:\URS0801A\GIS\EJ\Pct_Q3_Q4_Q5_35_intersections_ALT6a.mxd (10/6/11)

FIGURE
Sheet 3 of 4

I-710 Corridor Project

Percent in top three income quintile - 2035



- | Intersections Alt6A | % in top three income quintiles |
|--------------------------------------|---------------------------------|
| ● 3 peak period delay reduced | 0 - 30 |
| ● 2 of 3 peak period delay reduced | 30 - 50 |
| ● No net change in peak delay | 50 - 75 |
| ● 2 of 3 peak period delay increased | 75 - 85 |
| ● 3 peak period delay increased | 85 - 100 |



SOURCE: TBM (2007); SCAG (2008)

I:\URS0801A\GIS\EJ\Pct_Q3_Q4_Q5_35_intersections_ALT6a.mxd (10/6/11)

FIGURE
Sheet 4 of 4

I-710 Corridor Project

Percent in top three income quintile - 2035