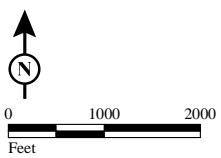


- | Intersections Alt6C | % below 200% of poverty threshold |
|---|--|
| ● 3 peak period delay reduced | ■ 0 - 20 |
| ● 2 of 3 peak period delay reduced | ■ 20 - 35 |
| ● No net change in peak delay | ■ 35 - 50 |
| ● 2 of 3 peak period delay increased | ■ 50 - 75 |
| ● 3 peak period delay increased | ■ 75 - 100 |



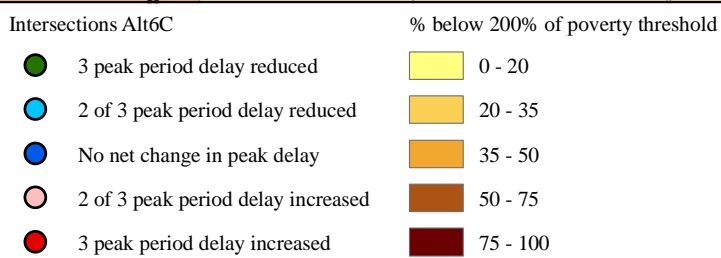
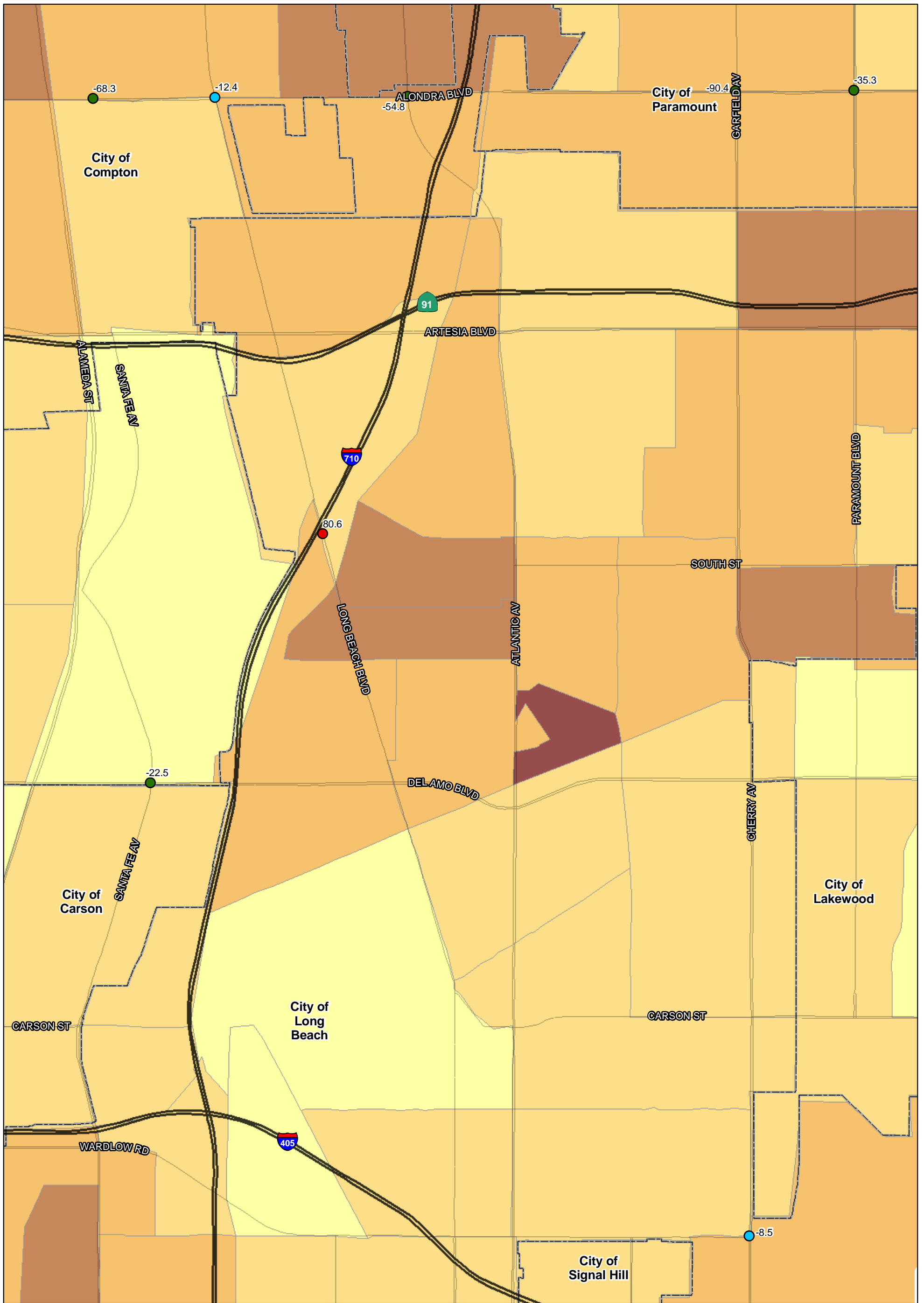
SOURCE: TBM (2007); SCAG (2008)

I:\URS0801A\GIS\EJ\Pct_Q1_Q2_35_intersections_ALT6b.mxd (10/7/11)

FIGURE
Sheet 1 of 4

I-710 Corridor Project

Percent below 200% of poverty threshold - 2035



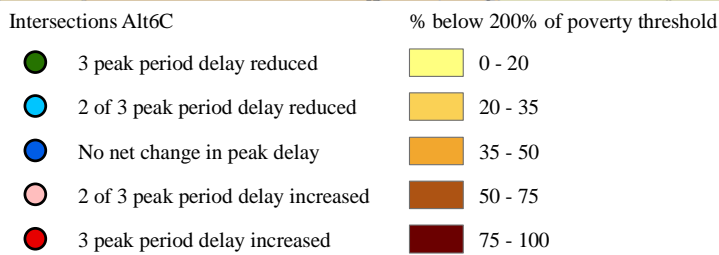
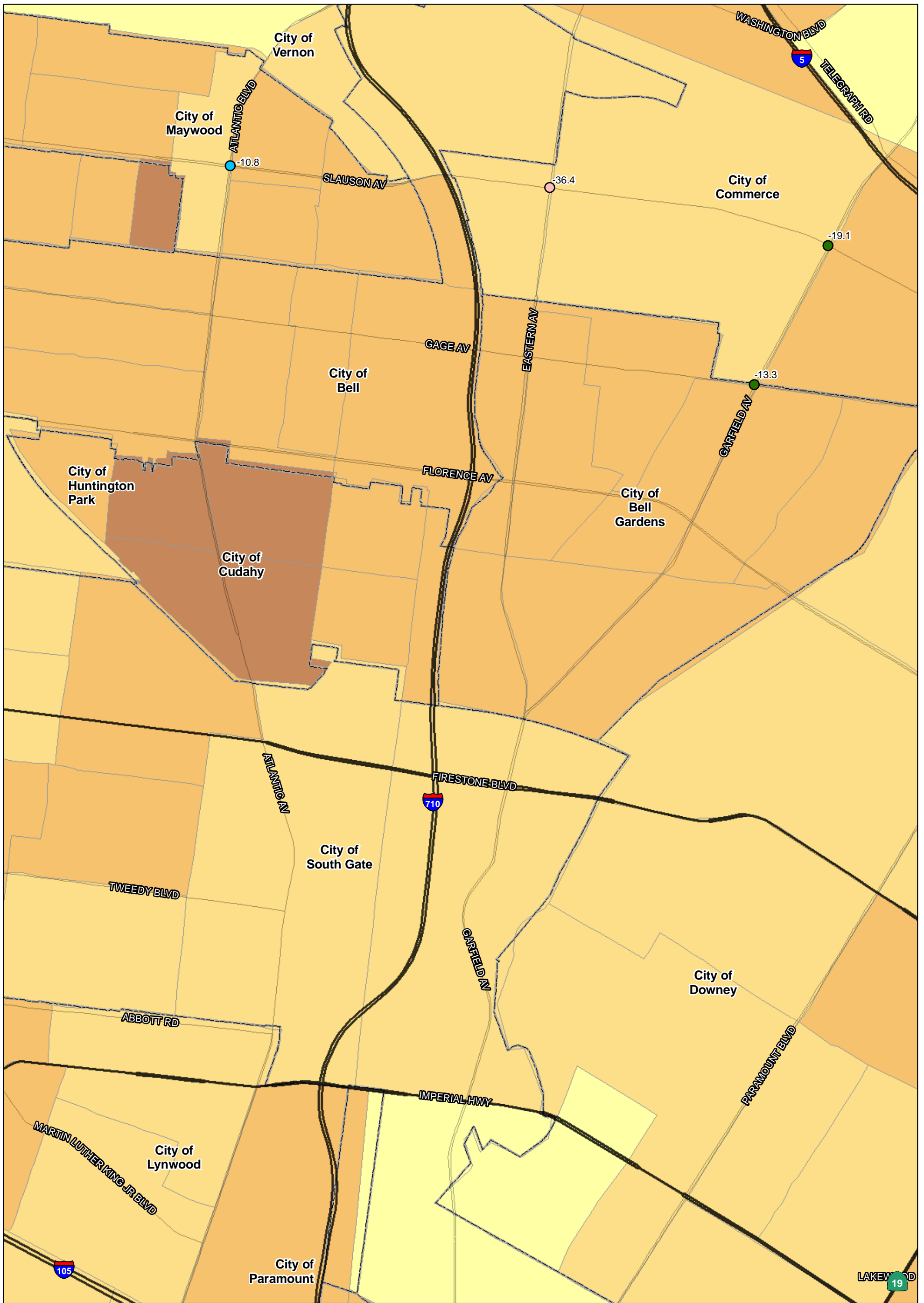
SOURCE: TBM (2007); SCAG (2008)

I:\URS0801A\GIS\EJ\Pct_Q1_Q2_35_intersections_ALT6b.mxd (10/7/11)

FIGURE
Sheet 2 of 4

I-710 Corridor Project

Percent below 200% of poverty threshold - 2035



SOURCE: TBM (2007); SCAG (2008)

I:\URS0801A\GIS\EJ\Pct_Q1_Q2_35_intersections_ALT6b.mxd (10/7/11)

FIGURE
Sheet 3 of 4

I-710 Corridor Project

Percent below 200% of poverty threshold - 2035

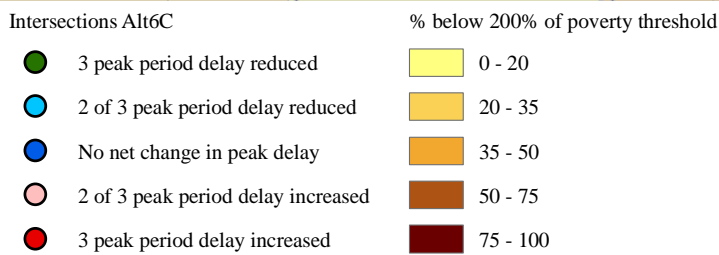
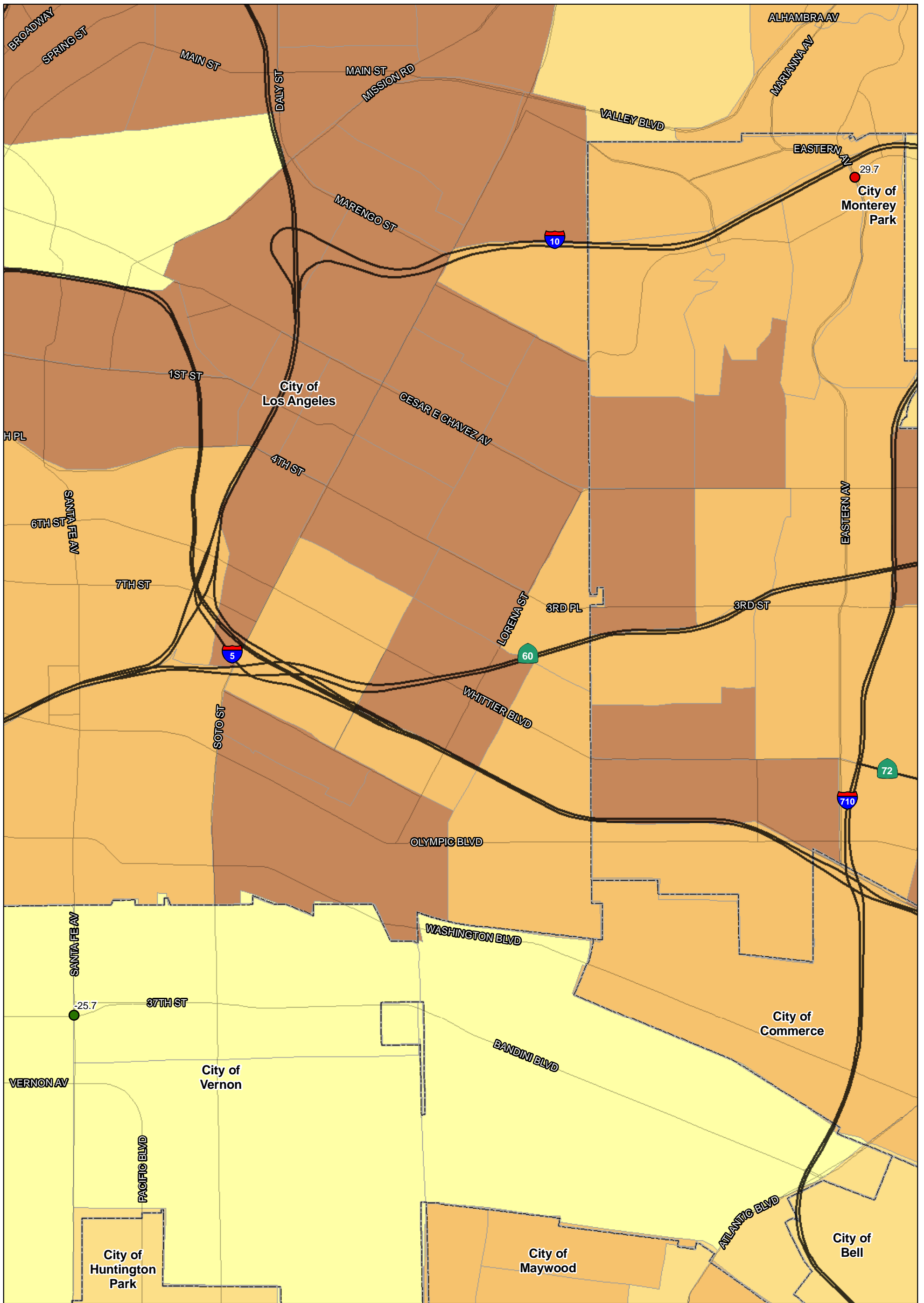
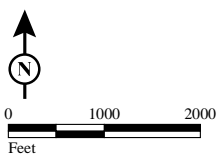


FIGURE
Sheet 4 of 4



SOURCE: TBM (2007); SCAG (2008)

I:\URS0801A\GIS\EJ\Pct_Q1_Q2_35_intersections_ALT6b.mxd (10/7/11)

I-710 Corridor Project

Percent below 200% of poverty threshold - 2035