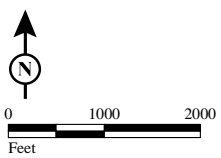


FIGURE  
Sheet 1 of 4

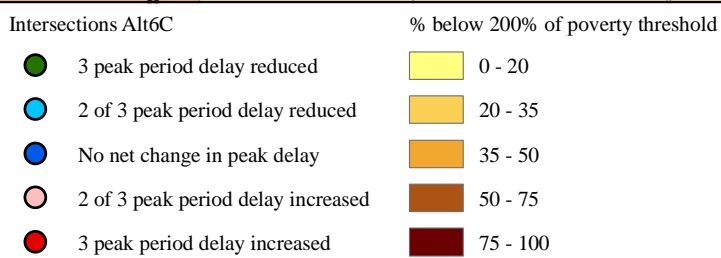
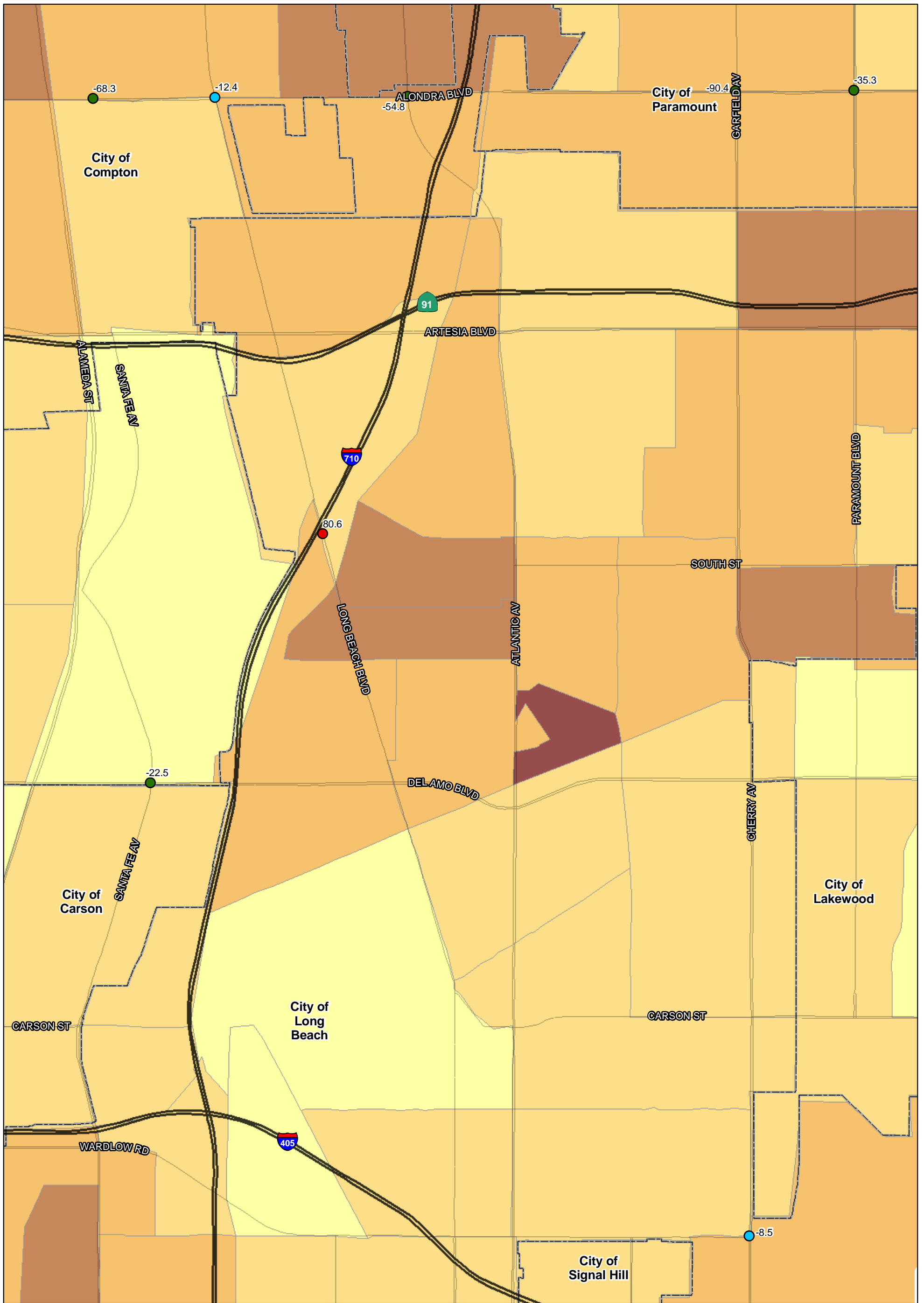


SOURCE: TBM (2007); SCAG (2008)

I:\URS0801A\GIS\EJ\Pct\_pov3\_35\_intersections\_ALT6c.mxd (10/7/11)

I-710 Corridor Project

Percent below 200% of poverty threshold - 2035



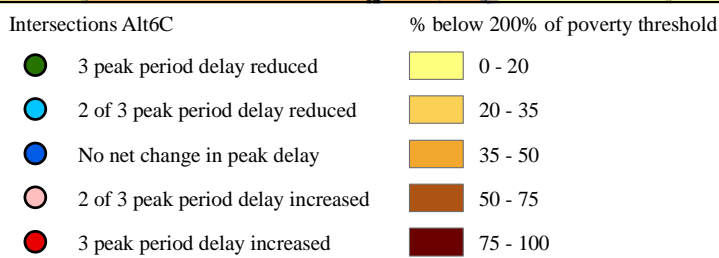
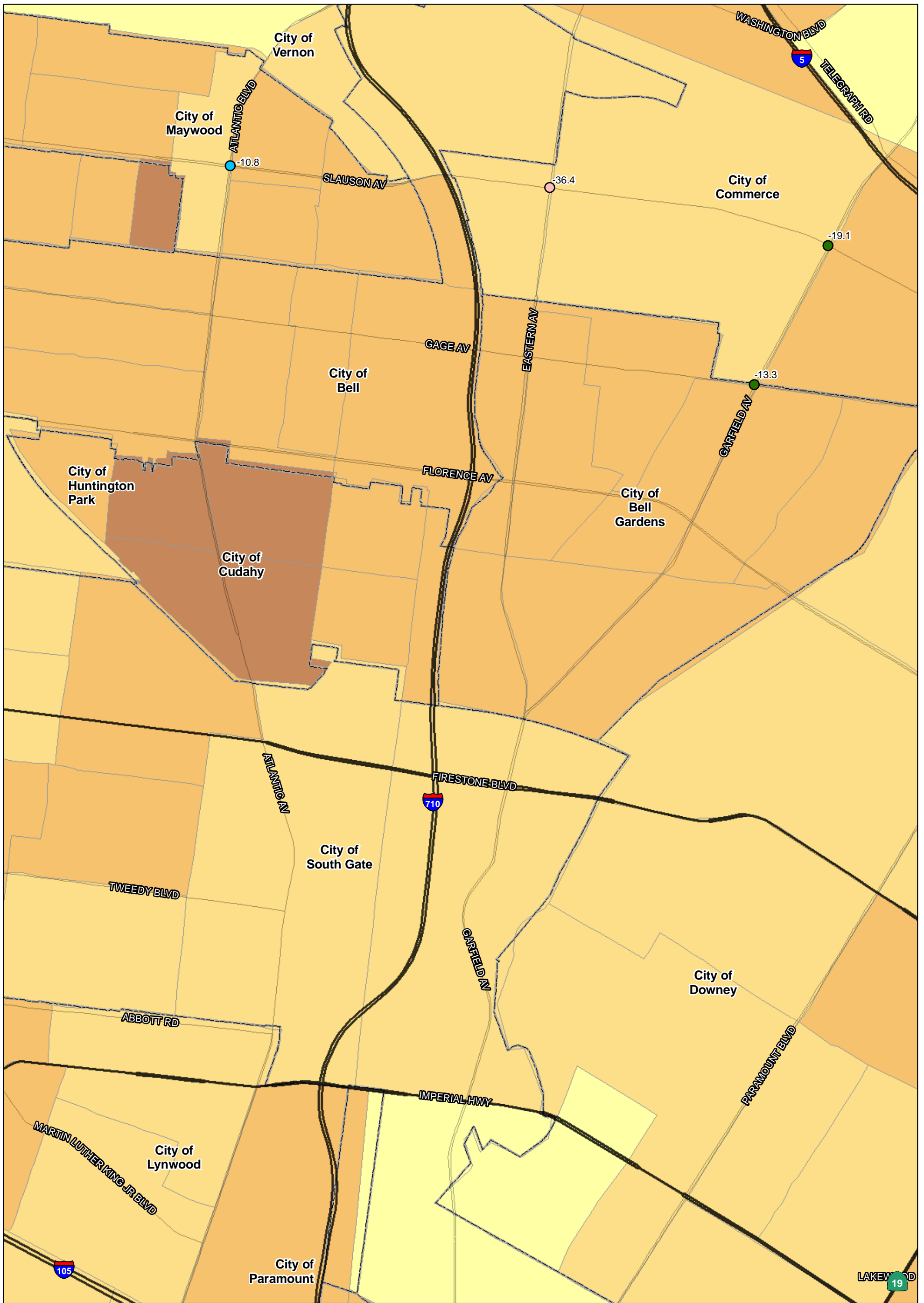
SOURCE: TBM (2007); SCAG (2008)

I:\URS0801A\GIS\EJ\Pct\_pov3\_35\_intersections\_ALT6c.mxd (10/7/11)

FIGURE  
Sheet 2 of 4

I-710 Corridor Project

Percent below 200% of poverty threshold - 2035



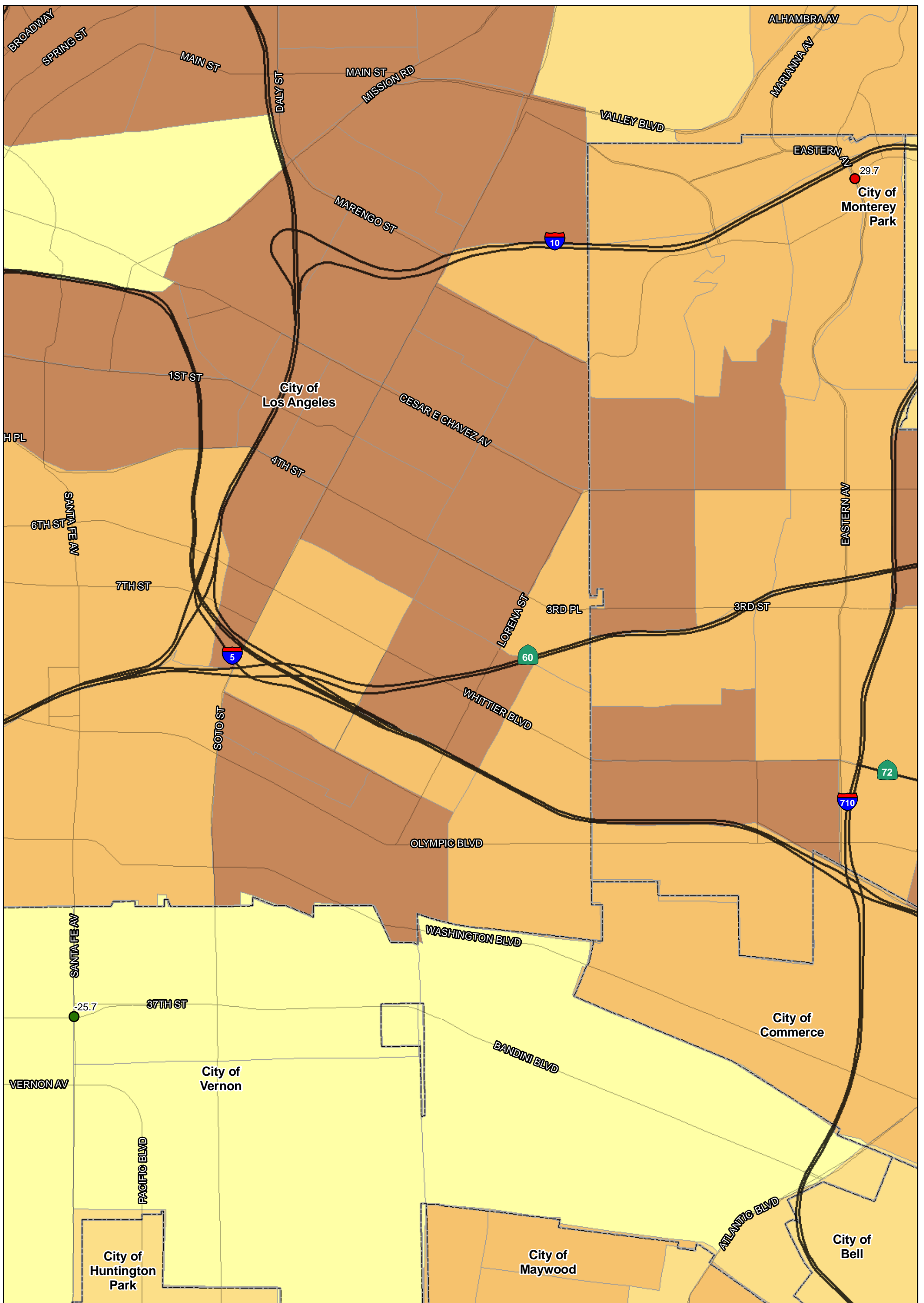
SOURCE: TBM (2007); SCAG (2008)

I:\URS0801A\GIS\EJ\Pct\_pov3\_35\_intersections\_ALT6c.mxd (10/7/11)

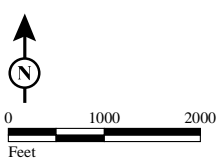
FIGURE  
Sheet 3 of 4

I-710 Corridor Project

Percent below 200% of poverty threshold - 2035



- | Intersections Alt6C  | % below 200% of poverty threshold                          |
|--|--|
| <span style="color: green;">●</span> 3 peak period delay reduced       | <span style="background-color: #ffffcc;">■</span> 0 - 20   |
| <span style="color: cyan;">●</span> 2 of 3 peak period delay reduced   | <span style="background-color: #ffcc99;">■</span> 20 - 35  |
| <span style="color: blue;">●</span> No net change in peak delay        | <span style="background-color: #ff9966;">■</span> 35 - 50  |
| <span style="color: pink;">●</span> 2 of 3 peak period delay increased | <span style="background-color: #cc6633;">■</span> 50 - 75  |
| <span style="color: red;">●</span> 3 peak period delay increased       | <span style="background-color: #993333;">■</span> 75 - 100 |



SOURCE: TBM (2007); SCAG (2008)

I:\URS0801A\GIS\EJ\Pct\_pov3\_35\_intersections\_ALT6c.mxd (10/7/11)

FIGURE  
Sheet 4 of 4

I-710 Corridor Project

Percent below 200% of poverty threshold - 2035