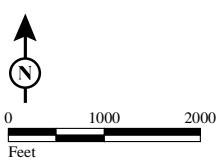


FIGURE
Sheet 1 of 4

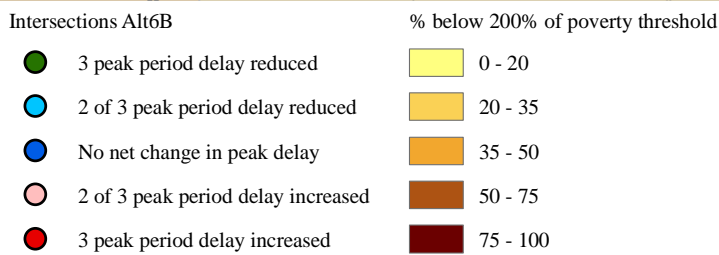
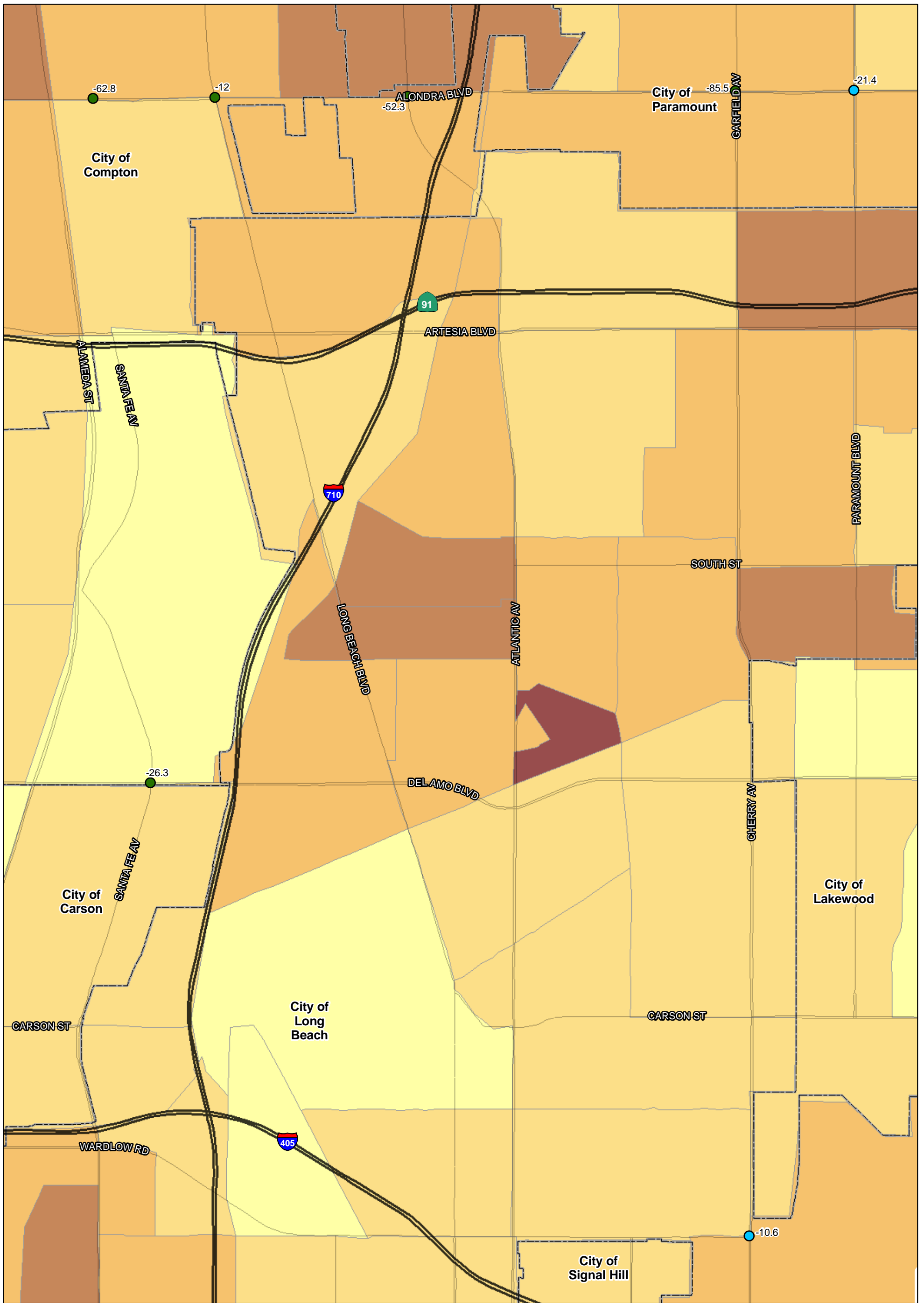


SOURCE: TBM (2007); SCAG (2008)

I:\URS0801A\GIS\EJ\Pct_pov3_35_intersections_ALT6b.mxd (10/7/11)

I-710 Corridor Project

Percent below 200% of poverty threshold - 2035



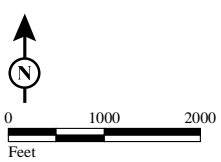
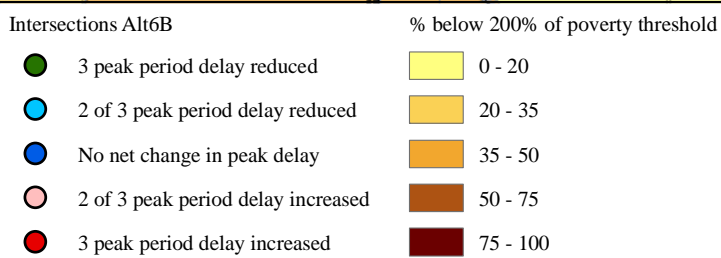
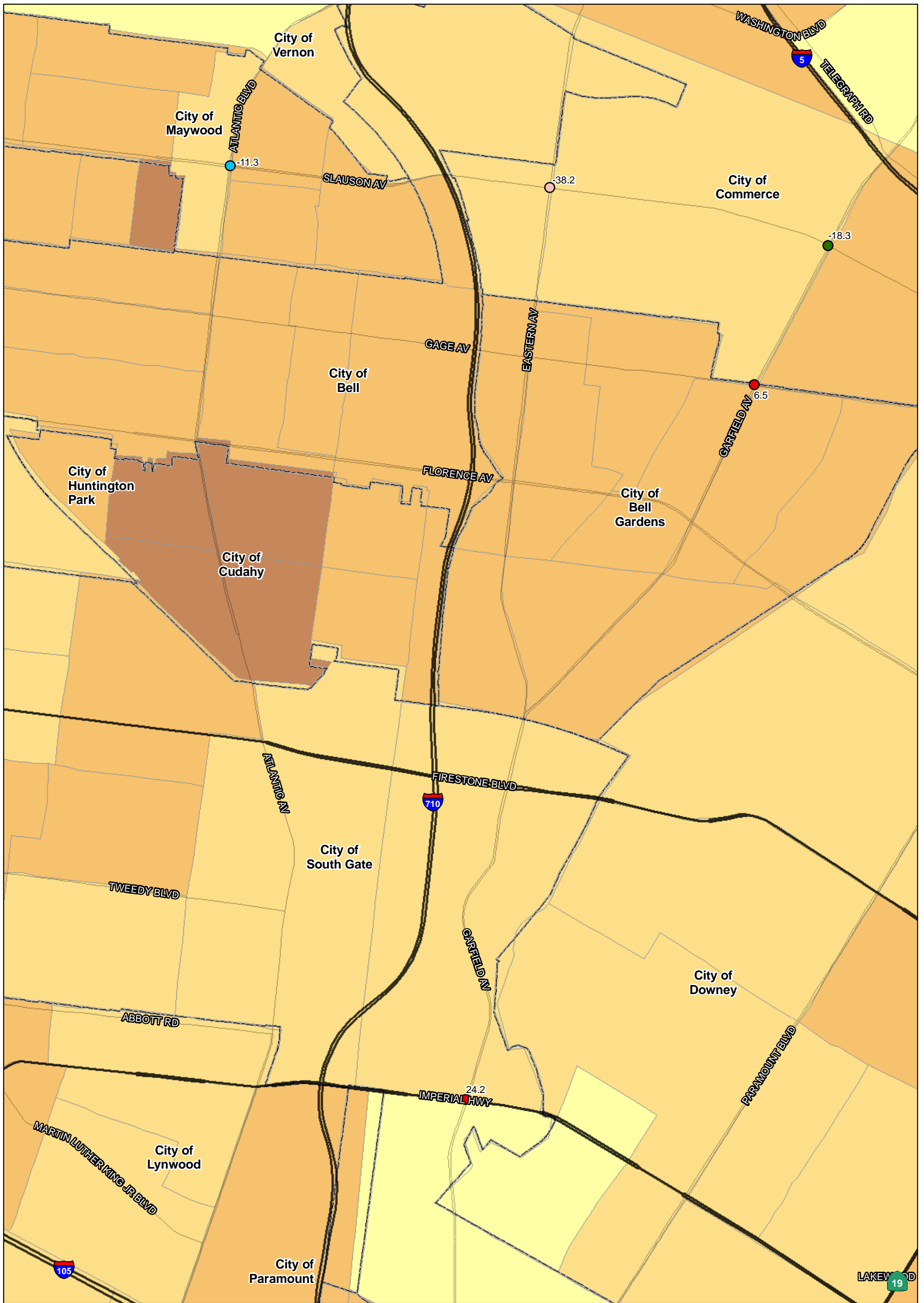
SOURCE: TBM (2007); SCAG (2008)

I:\URS0801A\GIS\EJ\Pct_pov3_35_intersections_ALT6b.mxd (10/7/11)

FIGURE
Sheet 2 of 4

I-710 Corridor Project

Percent below 200% of poverty threshold - 2035



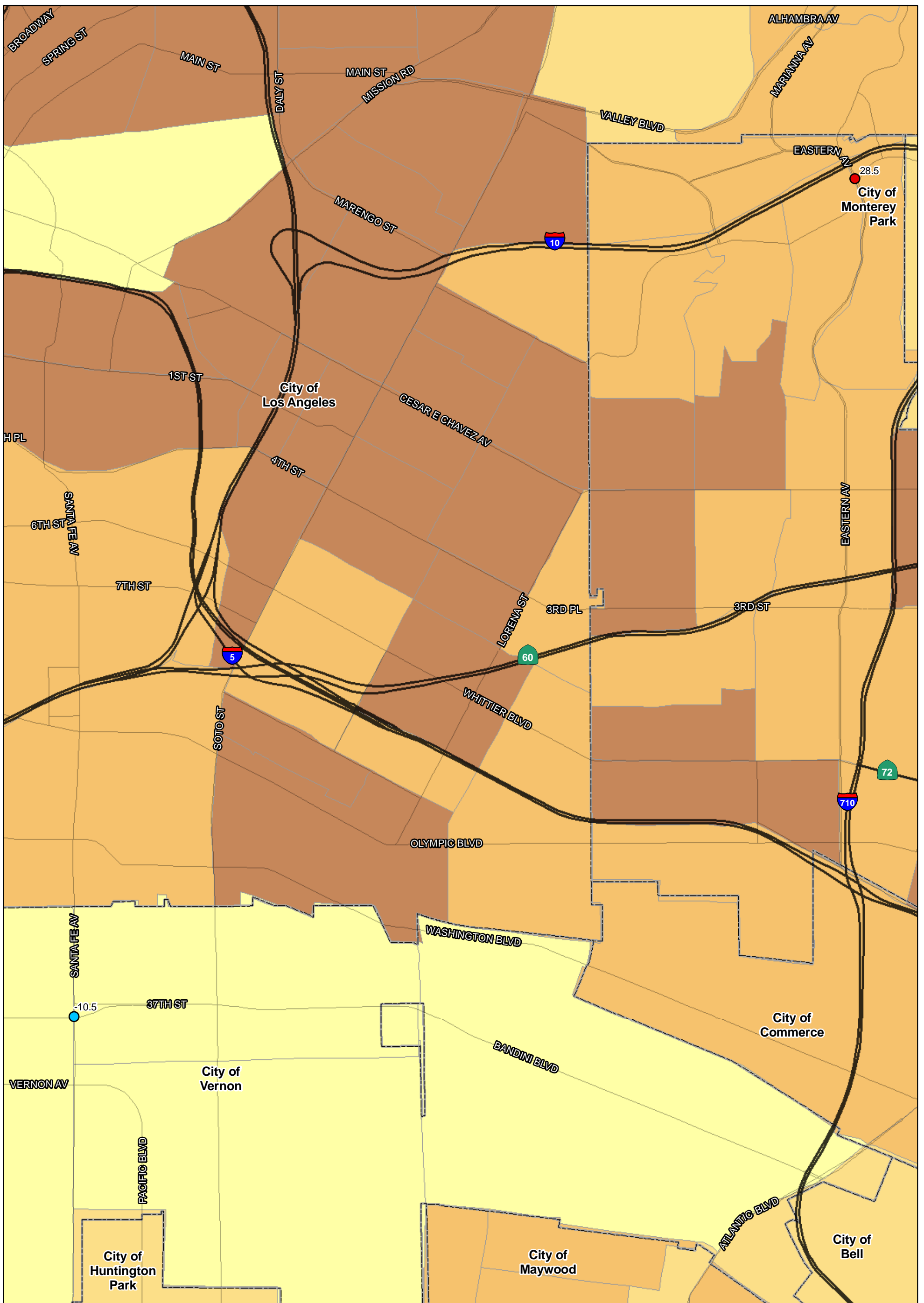
SOURCE: TBM (2007); SCAG (2008)

I:\URS0801A\GIS\EJ\Pct_pov3_35_intersections_ALT6b.mxd (10/7/11)

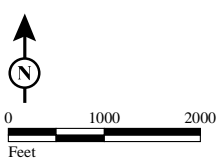
FIGURE
Sheet 3 of 4

I-710 Corridor Project

Percent below 200% of poverty threshold - 2035



- | Intersections Alt6B | % below 200% of poverty threshold |
|--------------------------------------|-----------------------------------|
| ● 3 peak period delay reduced | 0 - 20 |
| ● 2 of 3 peak period delay reduced | 20 - 35 |
| ● No net change in peak delay | 35 - 50 |
| ● 2 of 3 peak period delay increased | 50 - 75 |
| ● 3 peak period delay increased | 75 - 100 |



SOURCE: TBM (2007); SCAG (2008)

I:\URS0801A\GIS\EJ\Pct_pov3_35_intersections_ALT6b.mxd (10/7/11)

FIGURE
Sheet 4 of 4

I-710 Corridor Project

Percent below 200% of poverty threshold - 2035