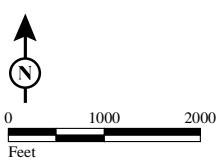


FIGURE
Sheet 1 of 4

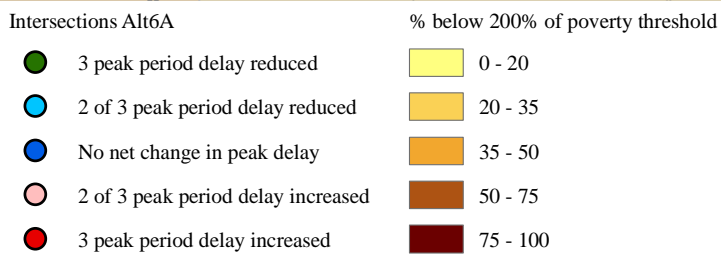
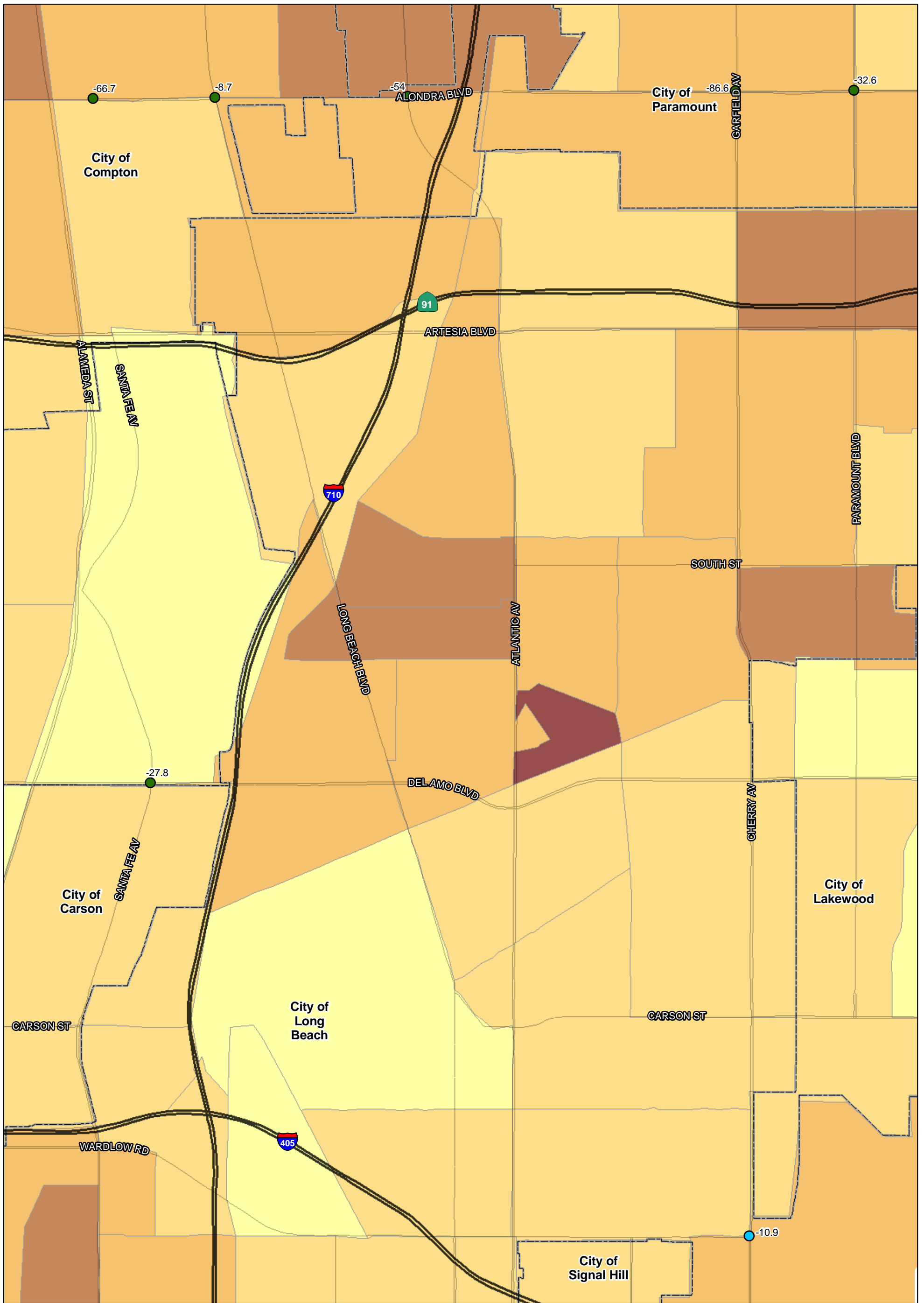


SOURCE: TBM (2007); SCAG (2008)

I:\URS0801A\GIS\EJ\Pct_pov3_35_intersections_ALT6a.mxd (10/6/11)

I-710 Corridor Project

Percent below 200% of poverty threshold - 2035



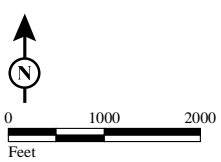
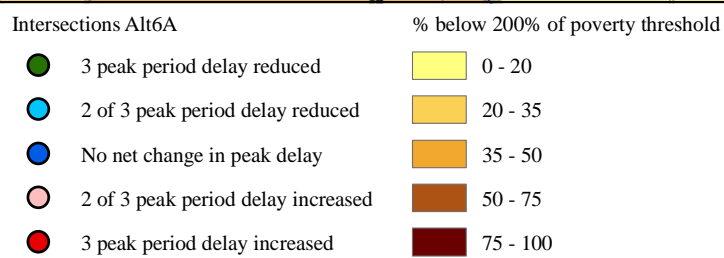
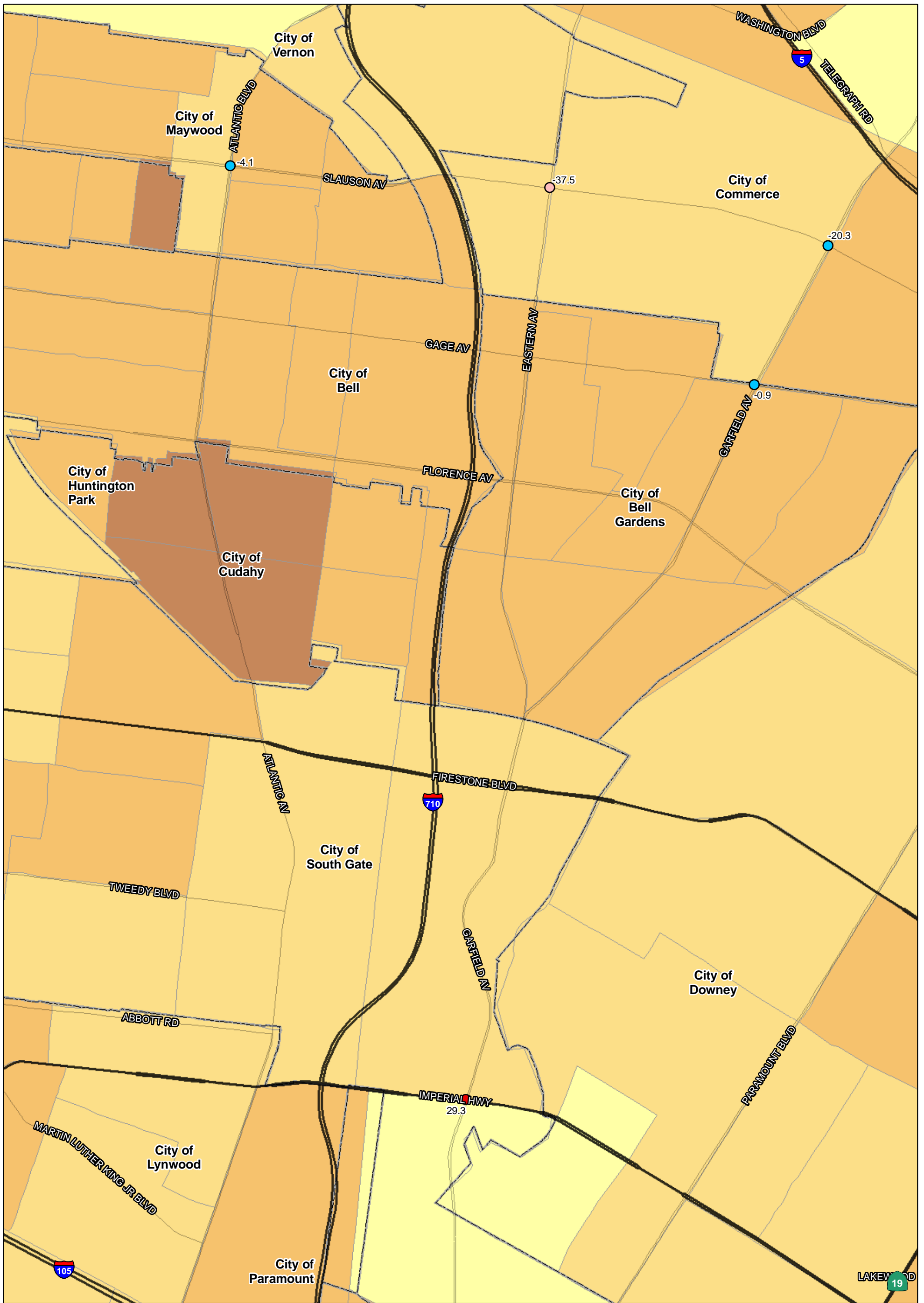
SOURCE: TBM (2007); SCAG (2008)

I:\URS0801A\GIS\EJ\Pct_pov3_35_intersections_ALT6a.mxd (10/6/11)

FIGURE
Sheet 2 of 4

I-710 Corridor Project

Percent below 200% of poverty threshold - 2035



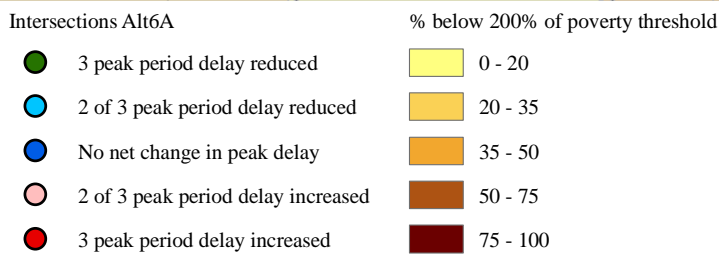
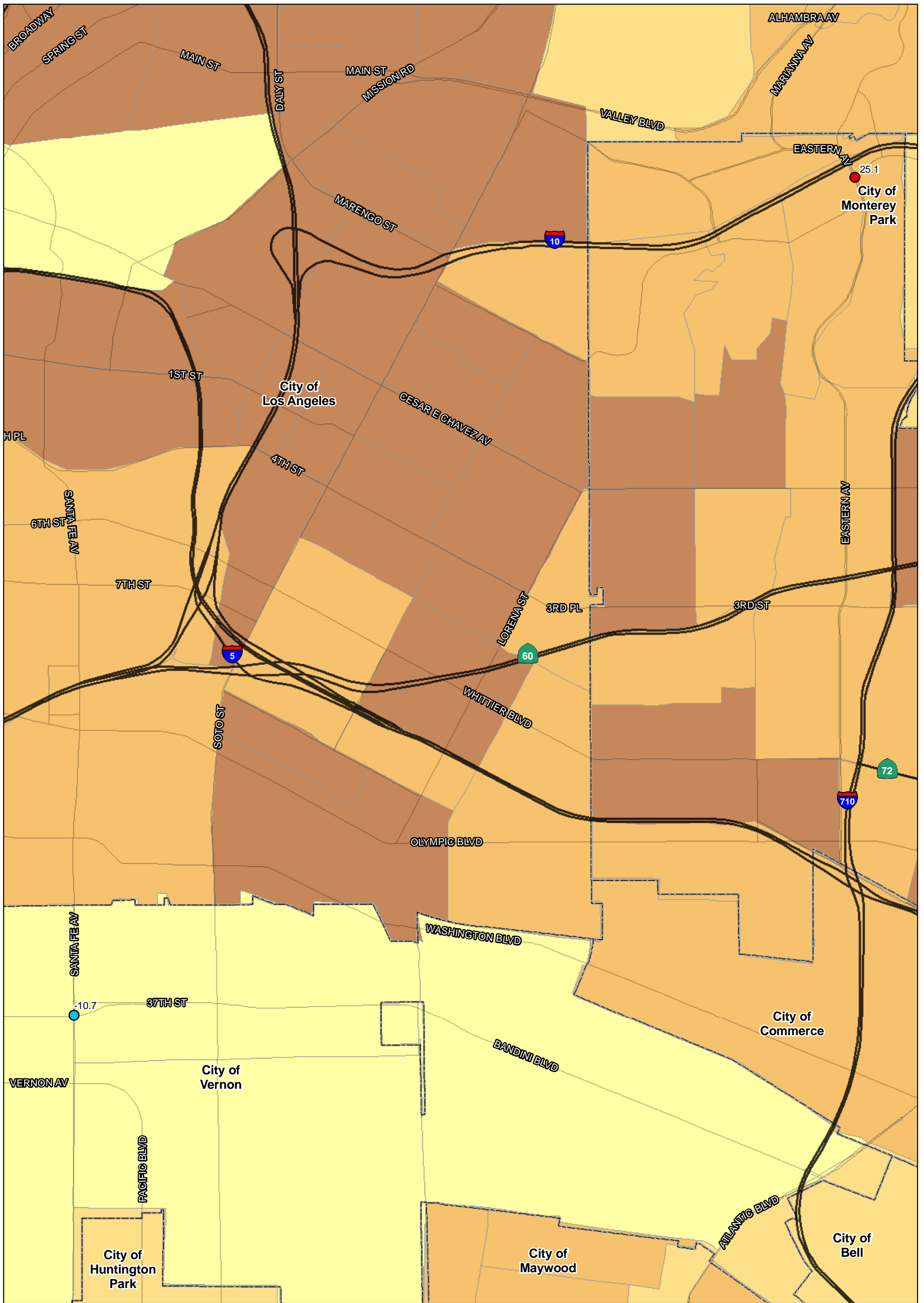
SOURCE: TBM (2007); SCAG (2008)

I:\URS0801A\GIS\EJ\Pct_pov3_35_intersections_ALT6a.mxd (10/6/11)

FIGURE
Sheet 3 of 4

I-710 Corridor Project

Percent below 200% of poverty threshold - 2035



SOURCE: TBM (2007); SCAG (2008)

I:\URS0801A\GIS\EJ\Pct_pov3_35_intersections_ALT6a.mxd (10/6/11)

FIGURE
Sheet 4 of 4

I-710 Corridor Project

Percent below 200% of poverty threshold - 2035