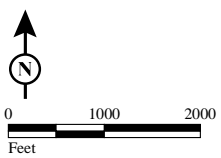


- | Intersections Alt6A | % non-white |
|--|--|
| ● 3 peak period delay reduced | ■ 0 - 25 |
| ● 2 of 3 peak period delay reduced | ■ 25 - 50 |
| ● No net change in peak delay | ■ 50 - 75 |
| ● 2 of 3 peak period delay increased | ■ 75 - 95 |
| ● 3 peak period delay increased | ■ 95 - 100 |



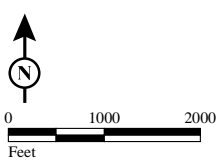
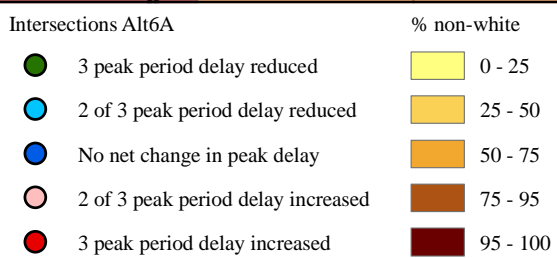
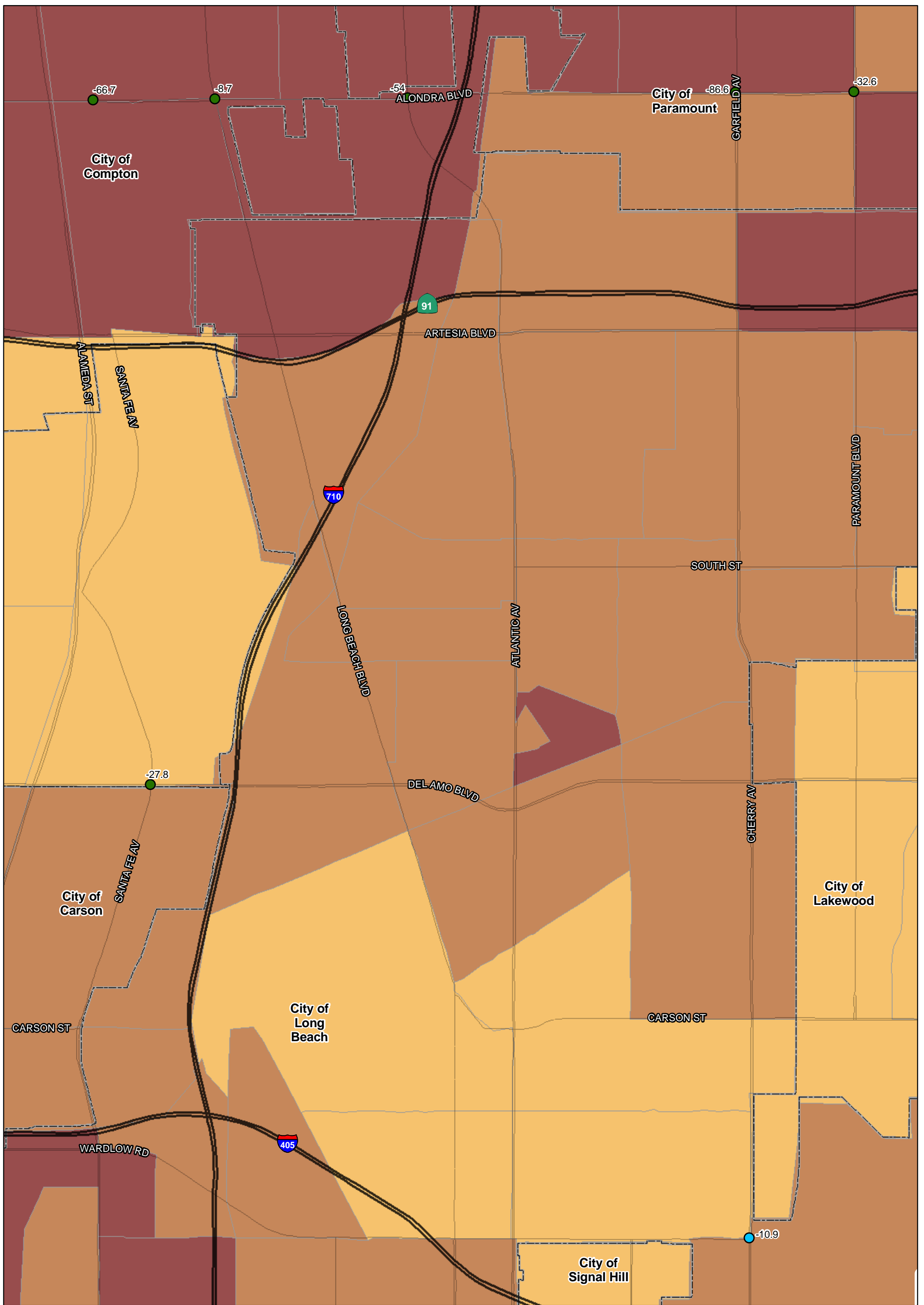
SOURCE: TBM (2007); SCAG (2008)

I:\URS0801A\GIS\EJ\Pct_non-white_35_intersections_ALT6a.mxd (10/6/11)

FIGURE
Sheet 1 of 4

I-710 Corridor Project

Percent non-white - 2035



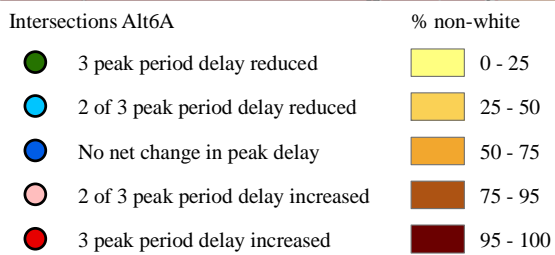
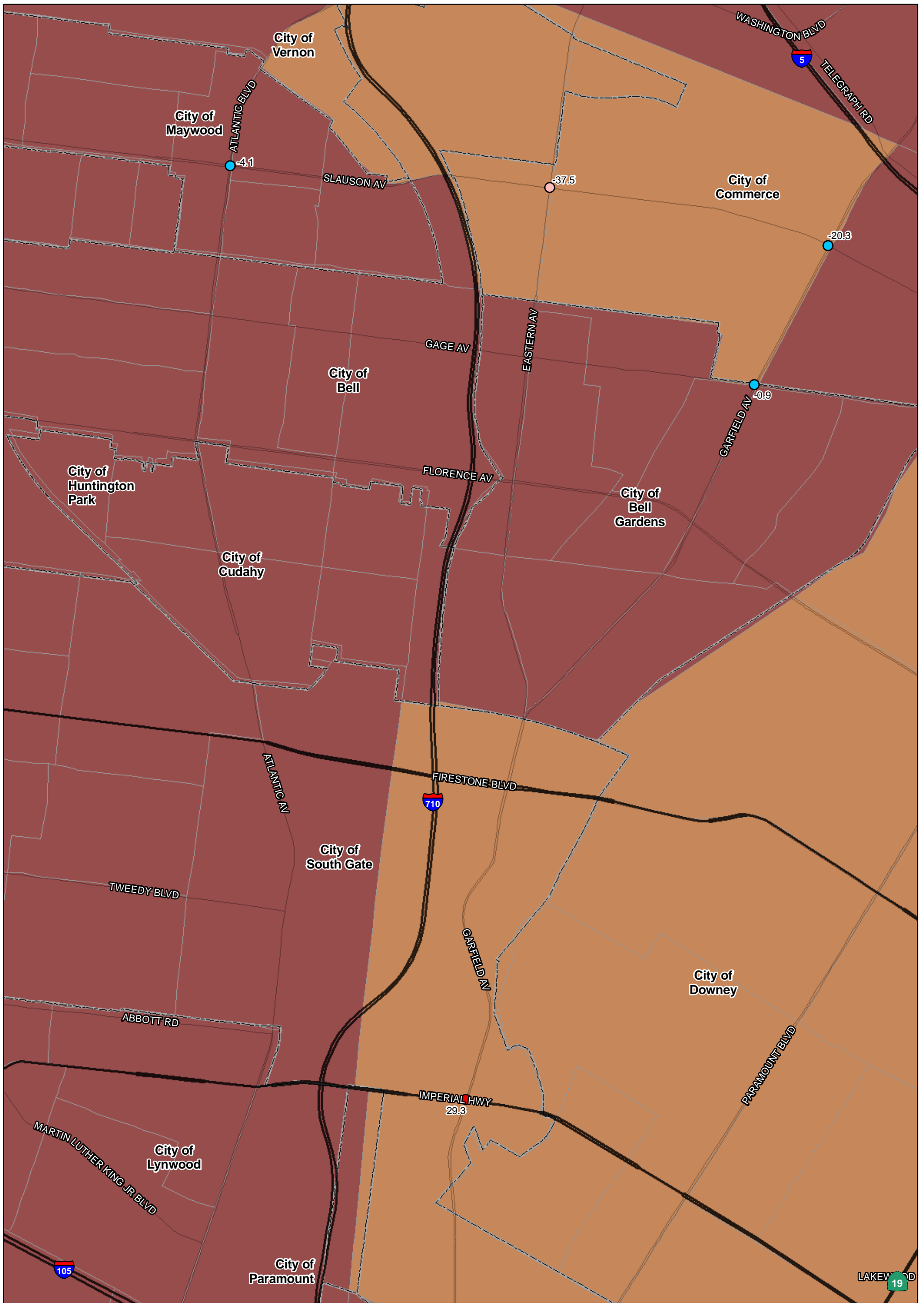
SOURCE: TBM (2007); SCAG (2008)

I:\URS0801A\GIS\EJ\Pct_non-white_35_intersections_ALT6a.mxd (10/6/11)

FIGURE
Sheet 2 of 4

I-710 Corridor Project

Percent non-white - 2035



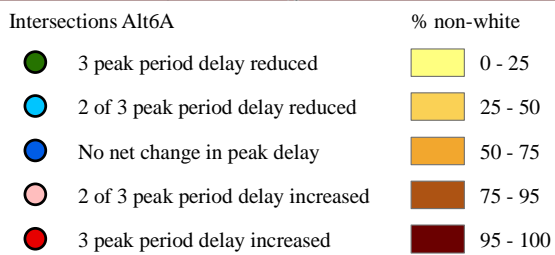
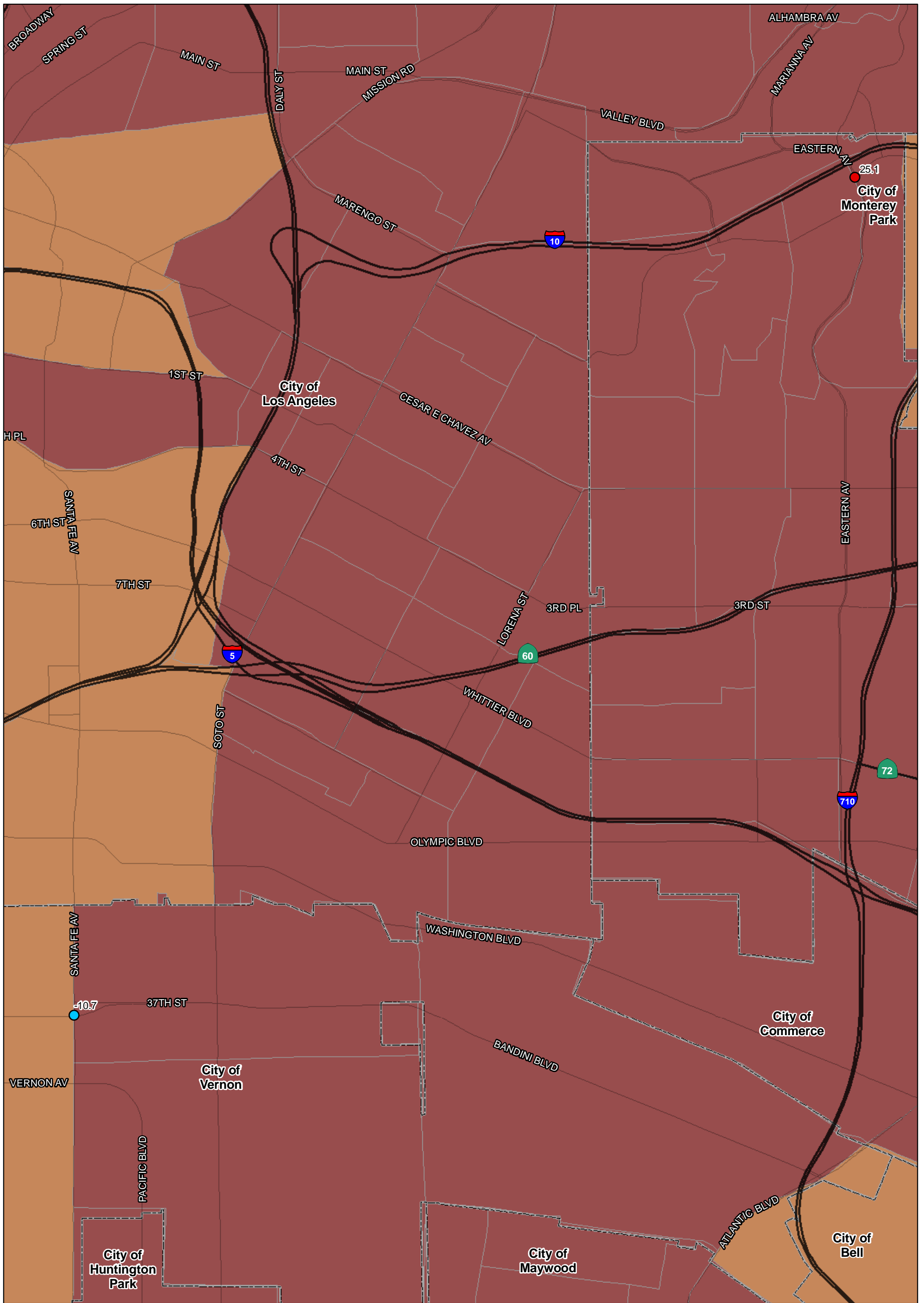
SOURCE: TBM (2007); SCAG (2008)

I:\URS0801A\GIS\EJ\Pct_non-white_35_intersections_ALT6a.mxd (10/6/11)

FIGURE
Sheet 3 of 4

I-710 Corridor Project

Percent non-white - 2035



SOURCE: TBM (2007); SCAG (2008)

I:\URS0801A\GIS\EJ\Pct_non-white_35_intersections_ALT6a.mxd (10/6/11)

FIGURE
Sheet 4 of 4

I-710 Corridor Project

Percent non-white - 2035