

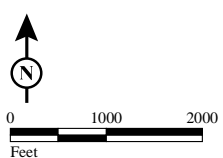
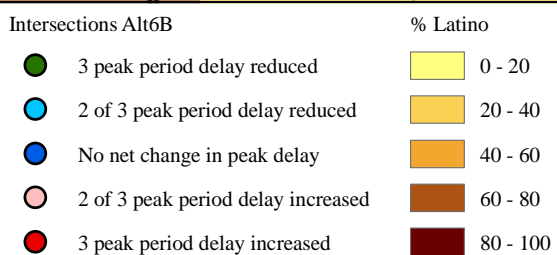
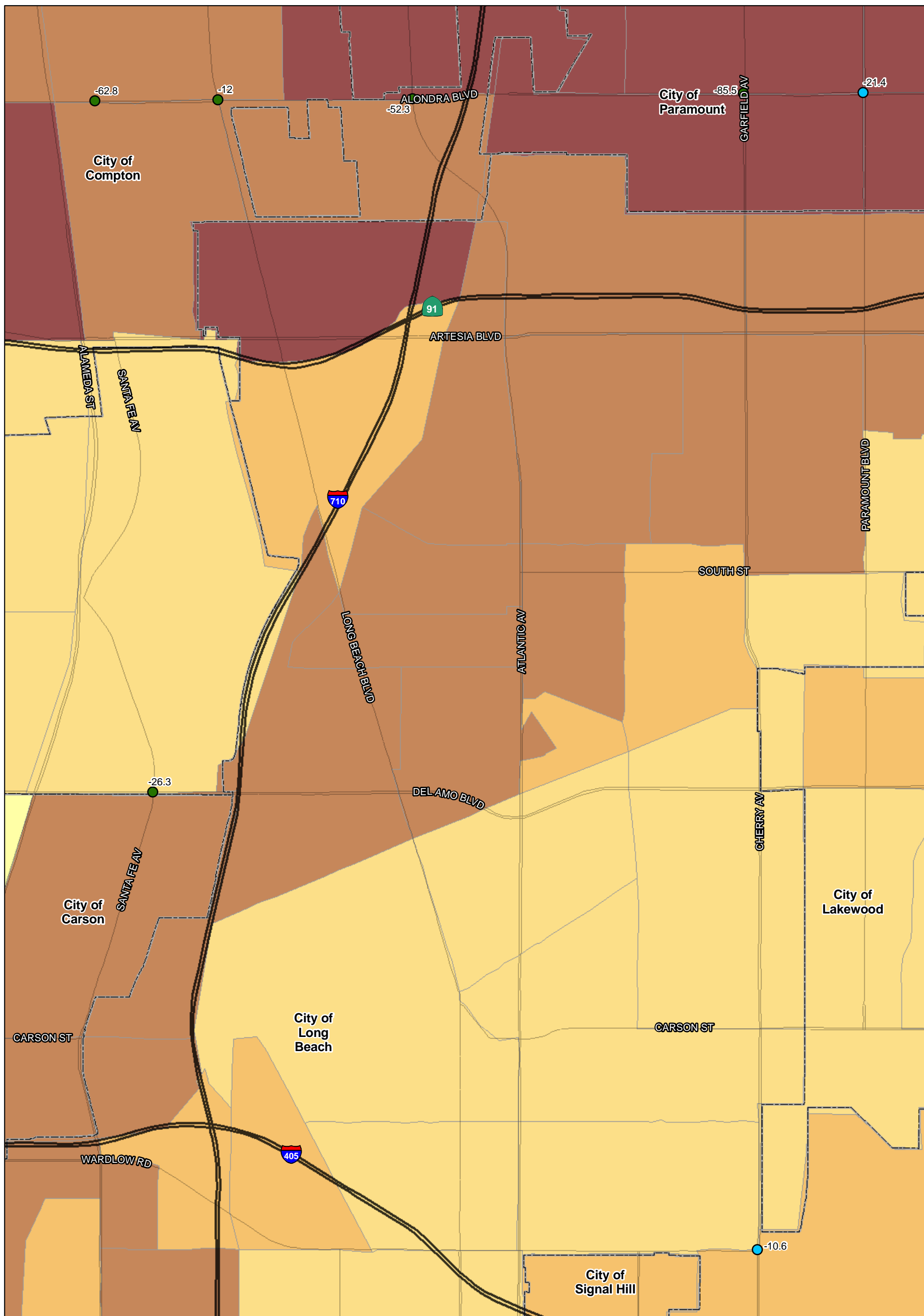
SOURCE: TBM (2007); SCAG (2008)

I:\URS0801A\GIS\EJ\Pct_latino_35_intersections_ALT6a.mxd (10/7/11)

FIGURE
Sheet 1 of 4

I-710 Corridor Project

Percent Latino - 2035



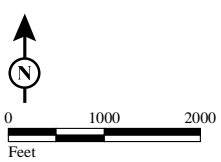
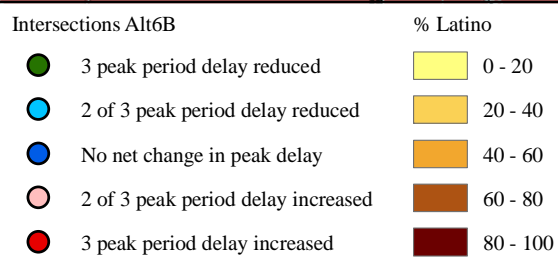
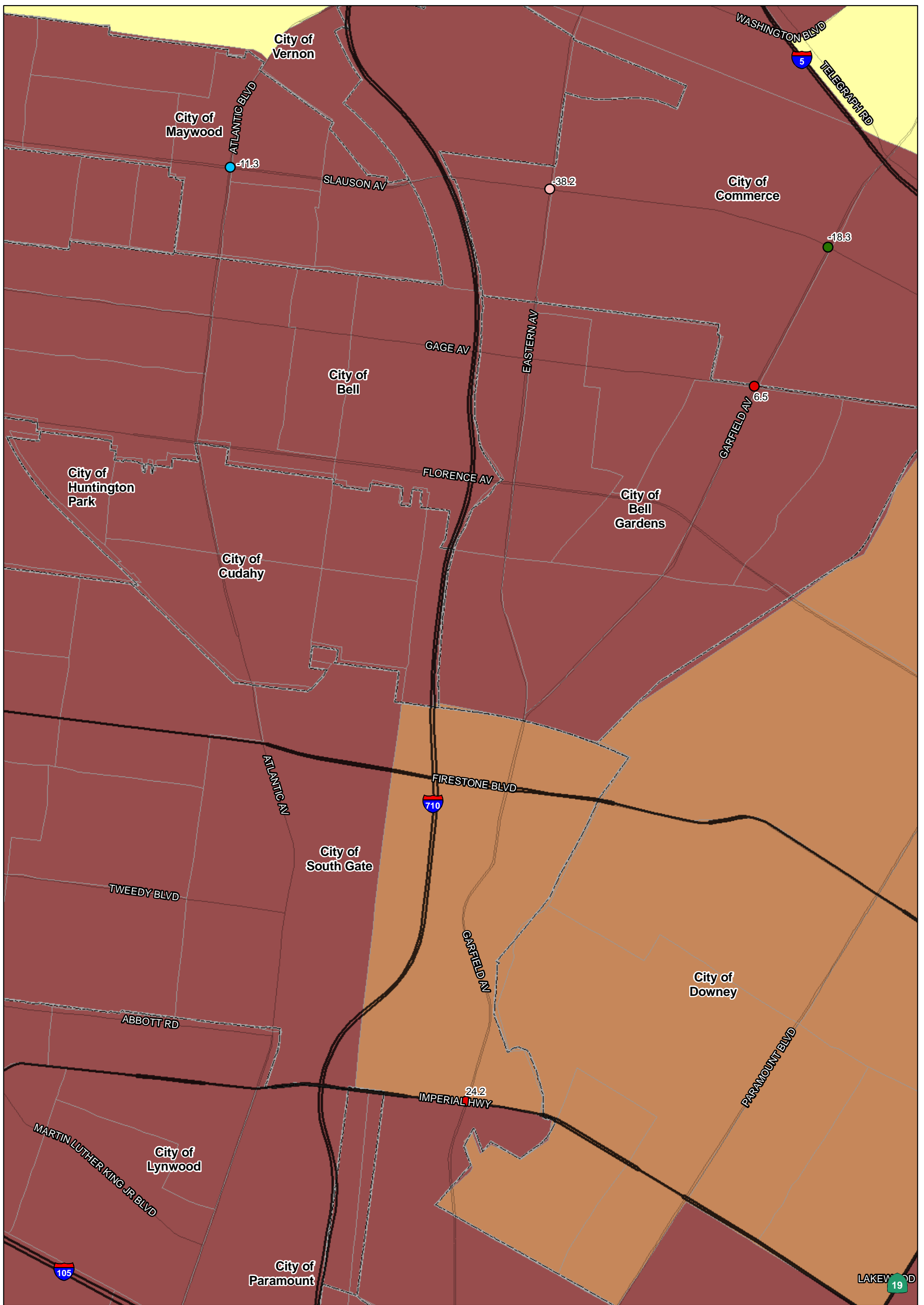
SOURCE: TBM (2007); SCAG (2008)

I:\URS0801A\GIS\EJ\Pct_latino_35_intersections_ALT6a.mxd (10/7/11)

FIGURE
Sheet 2 of 4

I-710 Corridor Project

Percent Latino - 2035



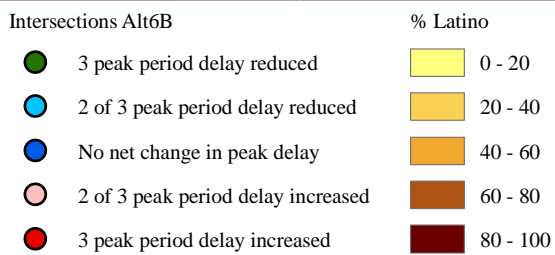
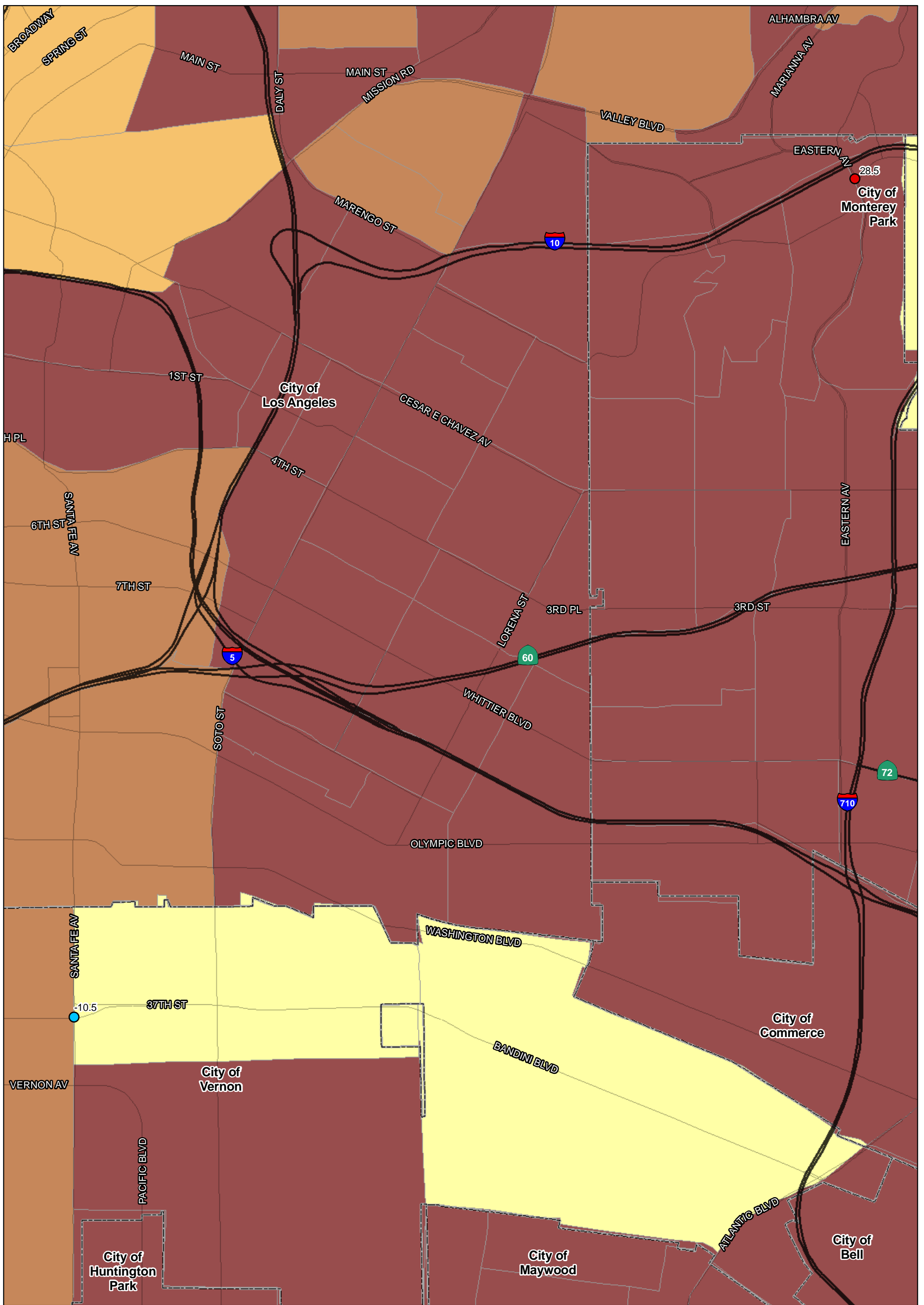
SOURCE: TBM (2007); SCAG (2008)

I:\URS0801A\GIS\EJ\Pct_latino_35_intersections_ALT6a.mxd (10/7/11)

FIGURE
Sheet 3 of 4

I-710 Corridor Project

Percent Latino - 2035



SOURCE: TBM (2007); SCAG (2008)

I:\URS0801A\GIS\EJ\Pct_latino_35_intersections_ALT6a.mxd (10/7/11)

FIGURE
Sheet 4 of 4

I-710 Corridor Project

Percent Latino - 2035