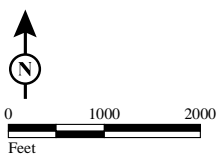


Intersections Alt6A

- 3 peak period delay reduced
- 2 of 3 peak period delay reduced
- No net change in peak delay
- 2 of 3 peak period delay increased
- 3 peak period delay increased

% Latino

- 0 - 20
- 20 - 40
- 40 - 60
- 60 - 80
- 80 - 100



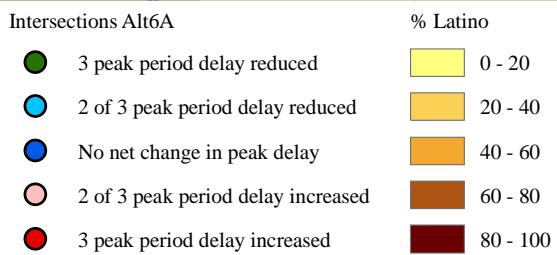
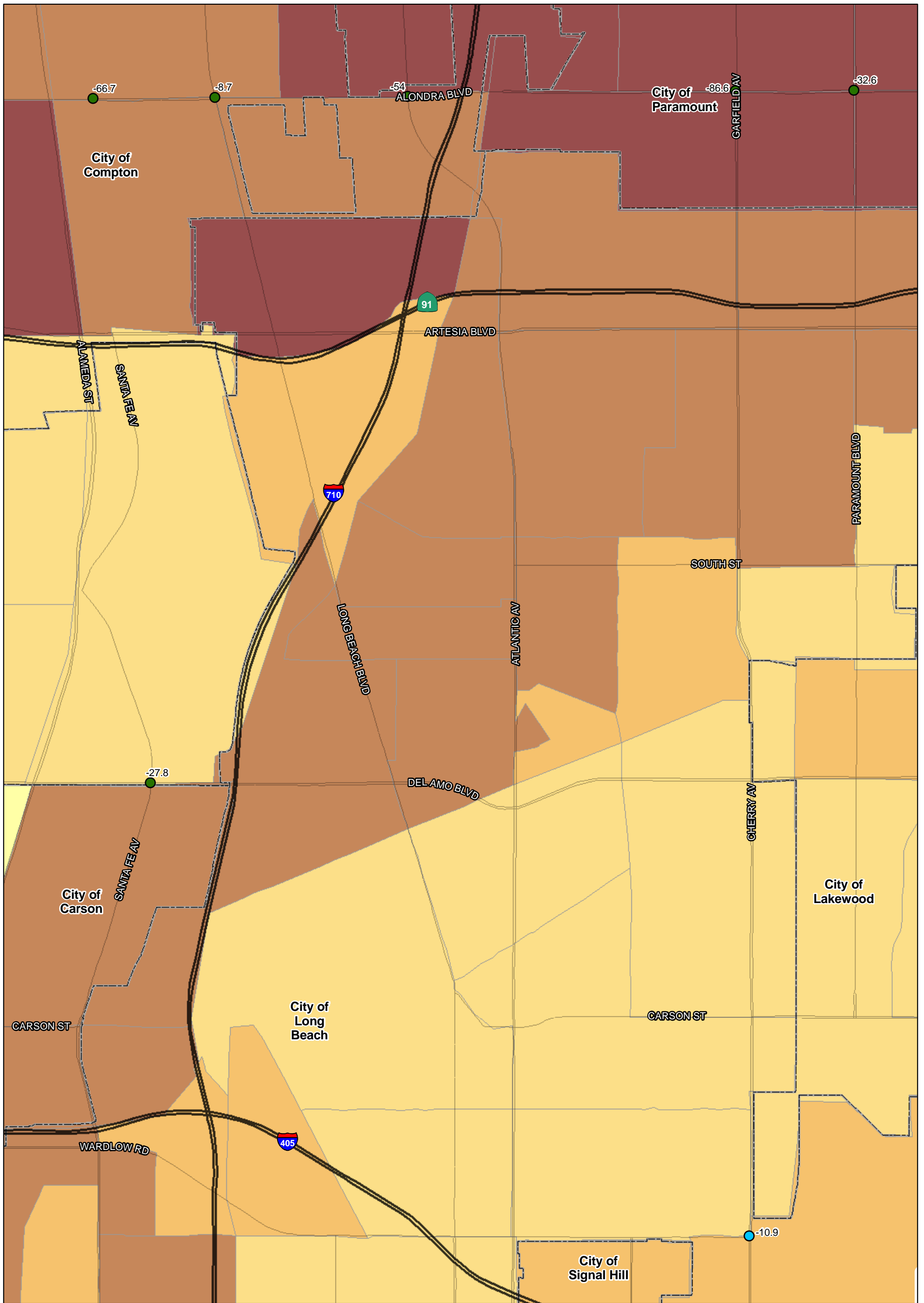
SOURCE: TBM (2007); SCAG (2008)

I:\URS0801A\GIS\EJ\Pct_latino_35_intersections_ALT6a.mxd (10/6/11)

FIGURE
Sheet 1 of 4

I-710 Corridor Project

Percent Latino - 2035



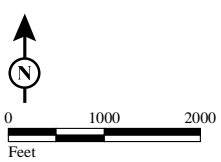
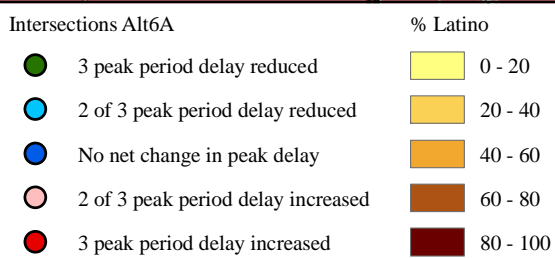
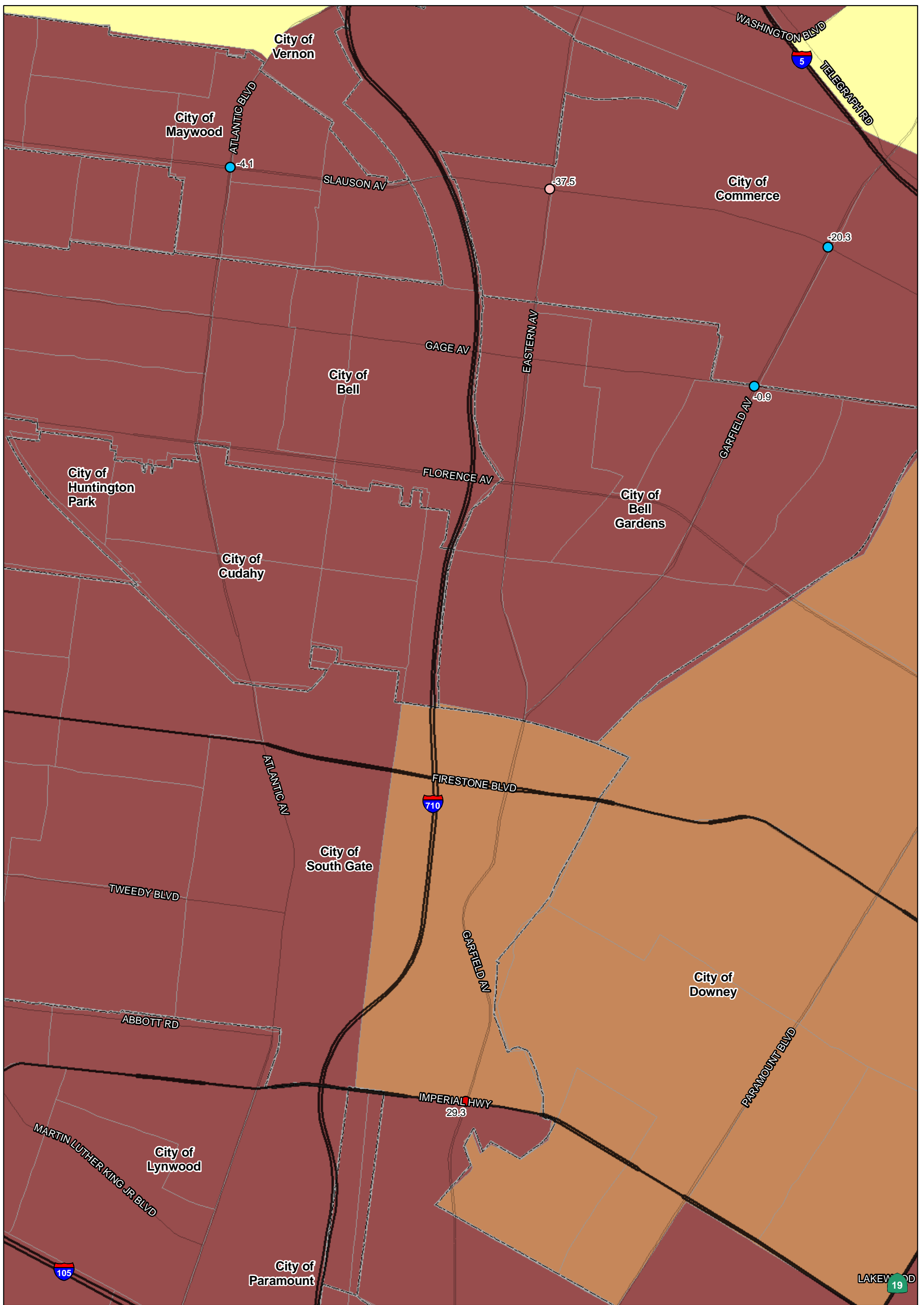
SOURCE: TBM (2007); SCAG (2008)

I:\URS0801A\GIS\EJ\Pct_latino_35_intersections_ALT6a.mxd (10/6/11)

FIGURE
Sheet 2 of 4

I-710 Corridor Project

Percent Latino - 2035



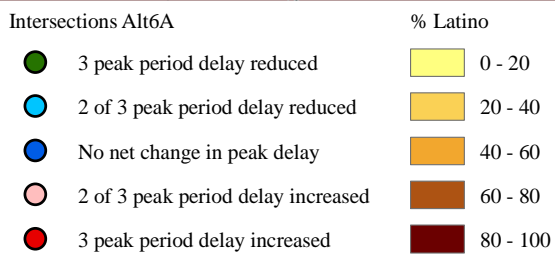
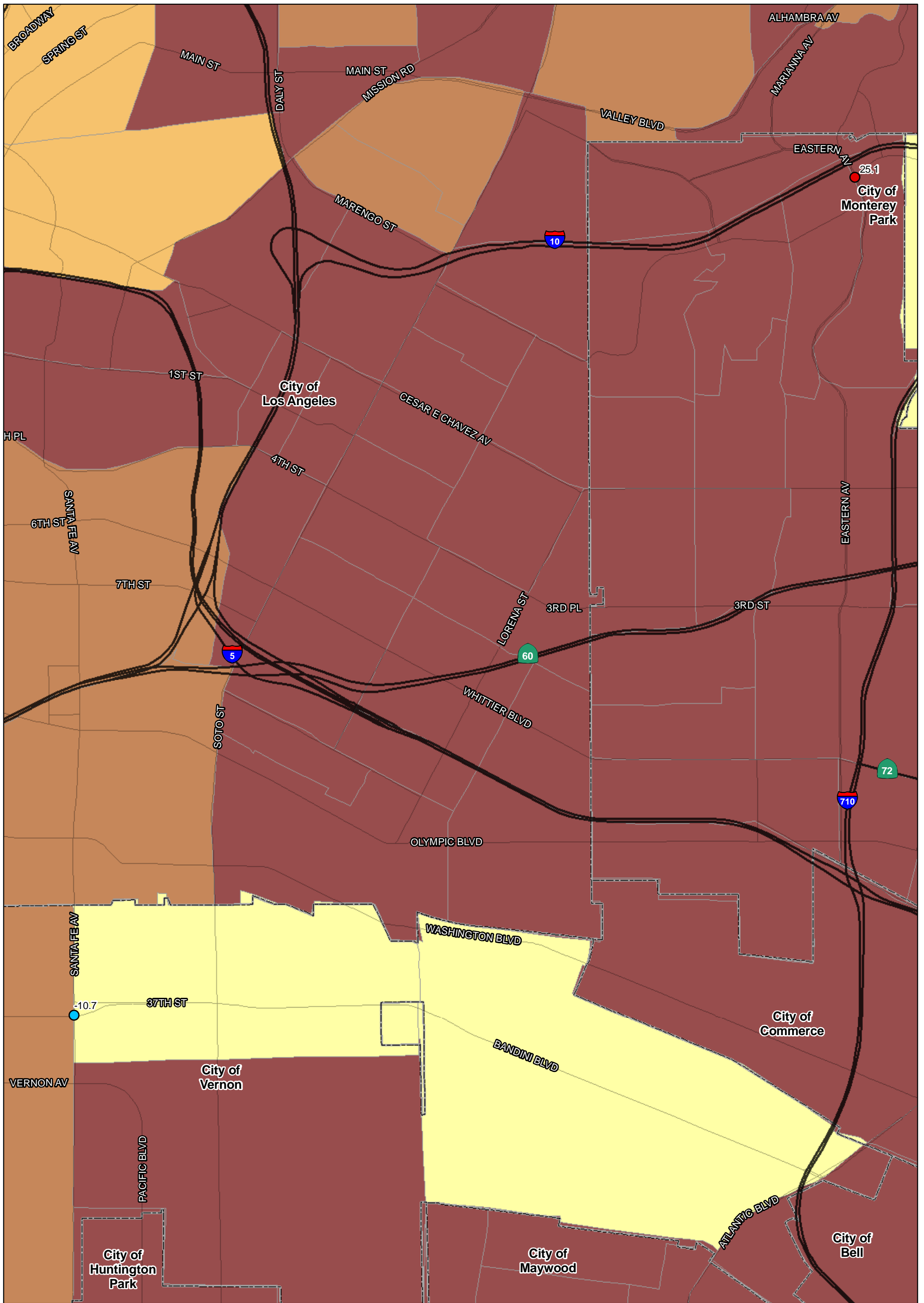
SOURCE: TBM (2007); SCAG (2008)

I:\URS0801A\GIS\EJ\Pct_latino_35_intersections_ALT6a.mxd (10/6/11)

FIGURE
Sheet 3 of 4

I-710 Corridor Project

Percent Latino - 2035



SOURCE: TBM (2007); SCAG (2008)

I:\URS0801A\GIS\EJ\Pct_latino_35_intersections_ALT6a.mxd (10/6/11)

FIGURE
Sheet 4 of 4

I-710 Corridor Project

Percent Latino - 2035