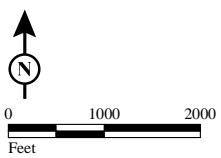


- | Intersections ALT5 | % Latino |
|--|--|
| ● 3 peak period delay reduced | ■ 0 - 20 |
| ● 2 of 3 peak period delay reduced | ■ 20 - 40 |
| ● No net change in peak delay | ■ 40 - 60 |
| ● 2 of 3 peak period delay increased | ■ 60 - 80 |
| ● 2 of 2 peak period delay increased | ■ 80 - 100 |



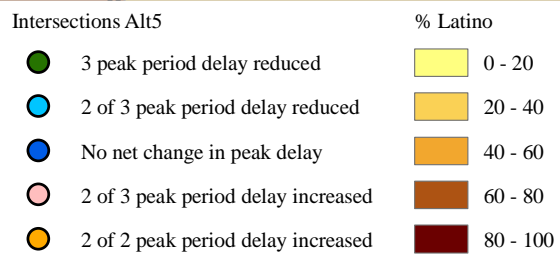
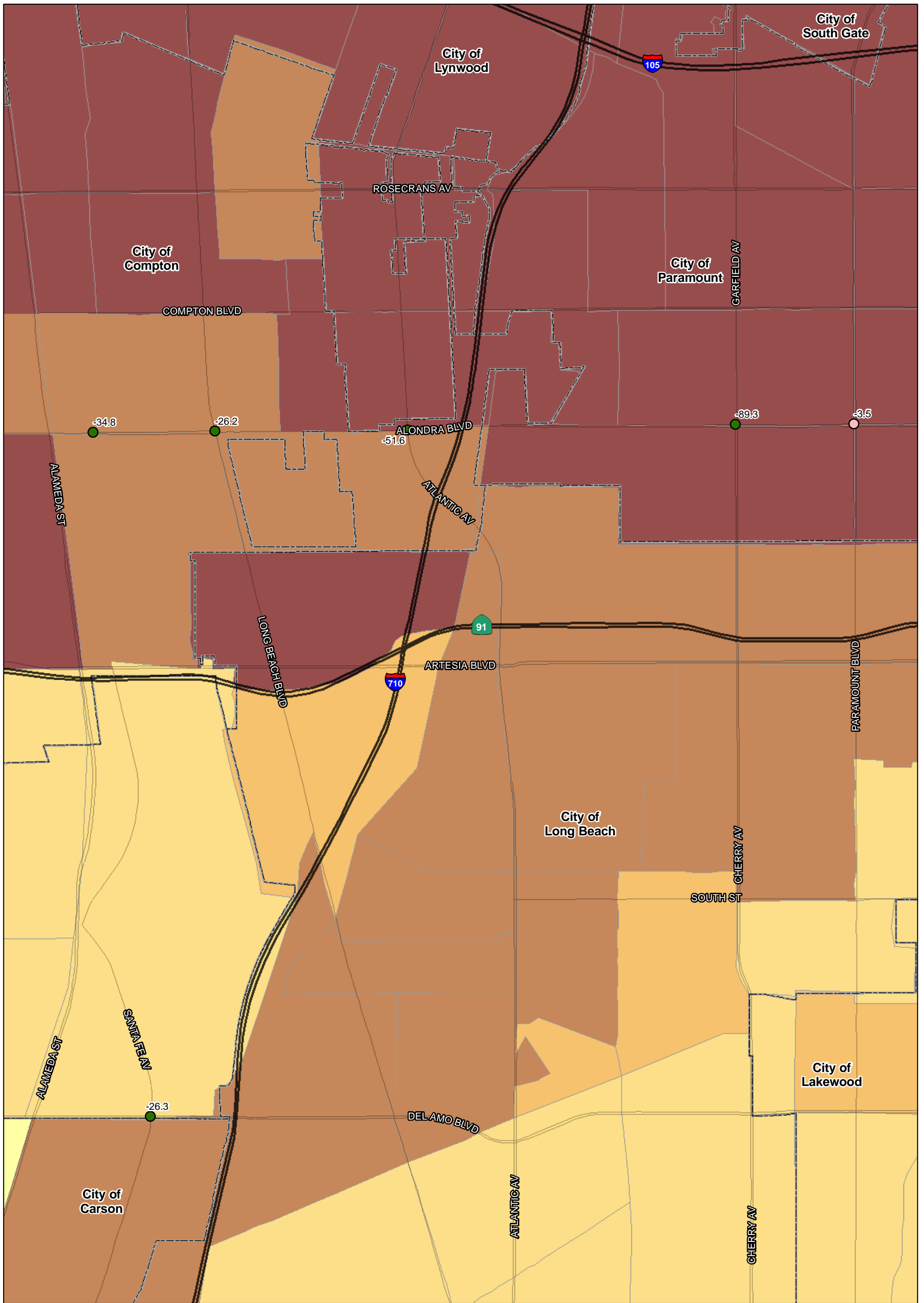
SOURCE: TBM (2007); SCAG (2008)

I:\URS0801A\GIS\EJ\Pct_latino_35_intersections_ALT5.mxd (10/6/11)

FIGURE
Sheet 1 of 3

I-710 Corridor Project

Percent Latino - 2035



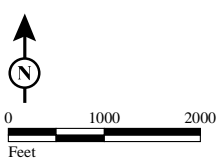
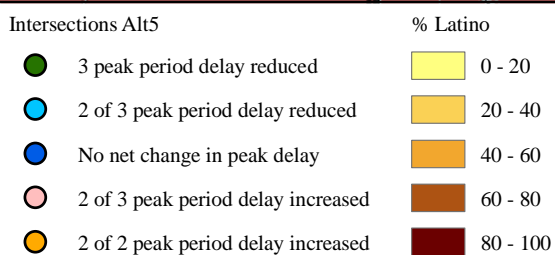
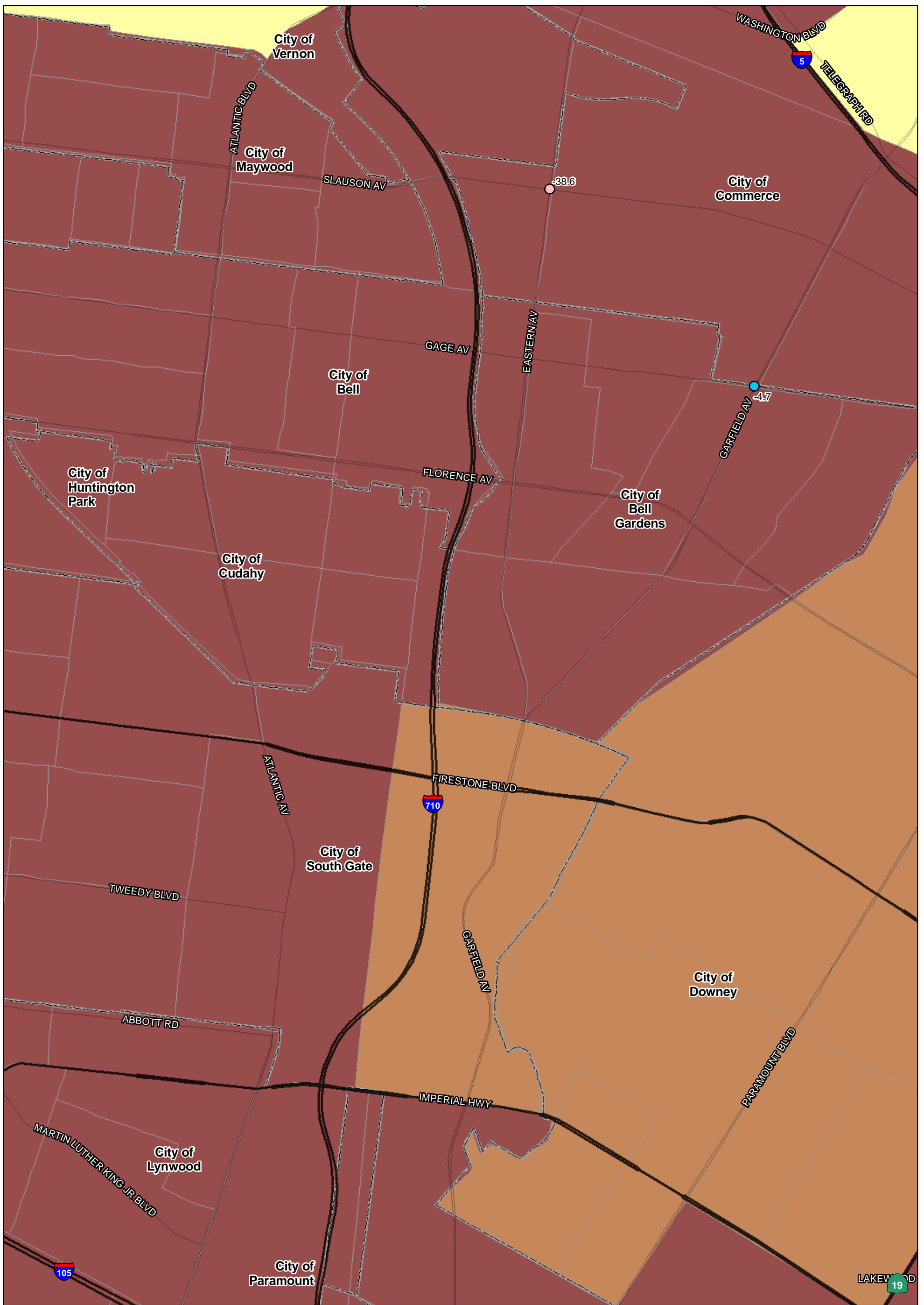
SOURCE: TBM (2007); SCAG (2008)

I:\URS0801A\GIS\EJ\Pct_latino_35_intersections_ALT5.mxd (10/6/11)

FIGURE
Sheet 2 of 3

I-710 Corridor Project

Percent Latino - 2035



SOURCE: TBM (2007); SCAG (2008)

I:\URS0801A\GIS\EJ\Pct_latino_35_intersections_ALT5.mxd (10/6/11)

FIGURE
Sheet 3 of 3

I-710 Corridor Project

Percent Latino - 2035