

Welcome!

Rail to Rail (Segment A) Construction Update Meeting
April 2024



We're creating connections for walking and biking in South LA.

RAIL TO RAIL ACTIVE TRANSPORTATION CORRIDOR PROJECT




Let's Ride Safely Together

- Keeping riders safe is our number one priority and we're committed to providing you with a great experience on Metro.
- Visit metro.net/Safety for more information about our plan that reimagines the way we approach public safety, to ensure all our riders feel safe, comfortable, and welcome on our system.



Easy and
anonymous
way to connect
with Metro
Security
anytime

A person's hands are holding a smartphone. The screen displays the LA Metro Transit Watch app interface. At the top, there is a large blue square with a white circle in the center containing a black letter 'M'. Below this, the text 'LA Metro Transit Watch' is displayed in a bold, black, sans-serif font. The background of the app is a light blue color with a faint, blurred image of a transit station.

LA Metro
Transit Watch



Free transit for students with GoPass!

Students at participating K-12 schools and community colleges ride for free on Metro and other transit agencies.

To find out if your district is participating, contact your school or visit metro.net/gopass.



Metro

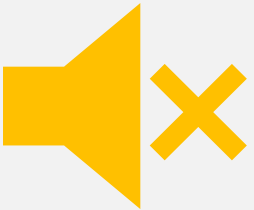
THANK YOU

A bright yellow speech bubble is centered on a solid blue background. The words "THANK YOU" are cut out of the bubble in a bold, blue, sans-serif font. The bubble has a pointed tail at the bottom right, and the cutout text reveals the blue background underneath.

Housekeeping



This meeting is being recorded. Video file will be posted on our web site at **metro.net/r2r**



Public video and mics are disabled. We cannot hear you or see you.



Please ask questions and submit comments via the Q&A feature.

Agenda

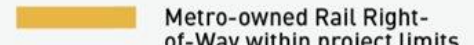
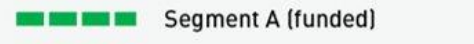

- > Introductions
- > Project Overview
- > Upcoming Milestones
- > Questions

Project Team

- > Construction Relations
 - Brett Roberts, Community Relations Manager
 - Perla Berry, Principal Community Relations Officer
- > Metro Construction
 - Raul Pedroza, Project Manager
- > Contractor
 - Matt Arroyo, Project Manager, Griffith Construction
- > New Media Team
 - Wendy Cardona, Community Relations Manager
 - Katrice Candler, Principal Community Relations Officer



-  Metro Rail Lines & Stations
A E K
-  Metro Busway & Stations
J
-  Amtrak/Metrolink

- Rail to Rail/River Active Transportation Corridor Project**
-  Metro-owned Rail Right-of-Way within project limits
 -  Segment A (funded)
 -  Segment B Alternative - Randolph St

Subject to Change

23-1995 © 2022 LACMTA



Project Renderings



Hyde Park from 4th-Looking Southwest



Bike/Pedestrian Path-Looking Northwest

Slauson West of Denker-Looking Northeast



Project Schedule

2022

May Activity: Groundbreaking

June to December Activities:
Clearing, Demolition, Excavation,
Landscaping, Paving, Intersection
Improvement Work

2023

January to December Activities:
Clearing, Demolition, Excavation,
Landscaping, Paving, Intersection
Improvement Work

2024

January to December Activities:
Clearing, Demolition, Excavation,
Landscaping, Paving, Intersection
Improvement Work

Project Completion/Opening

WE
ARE
HERE

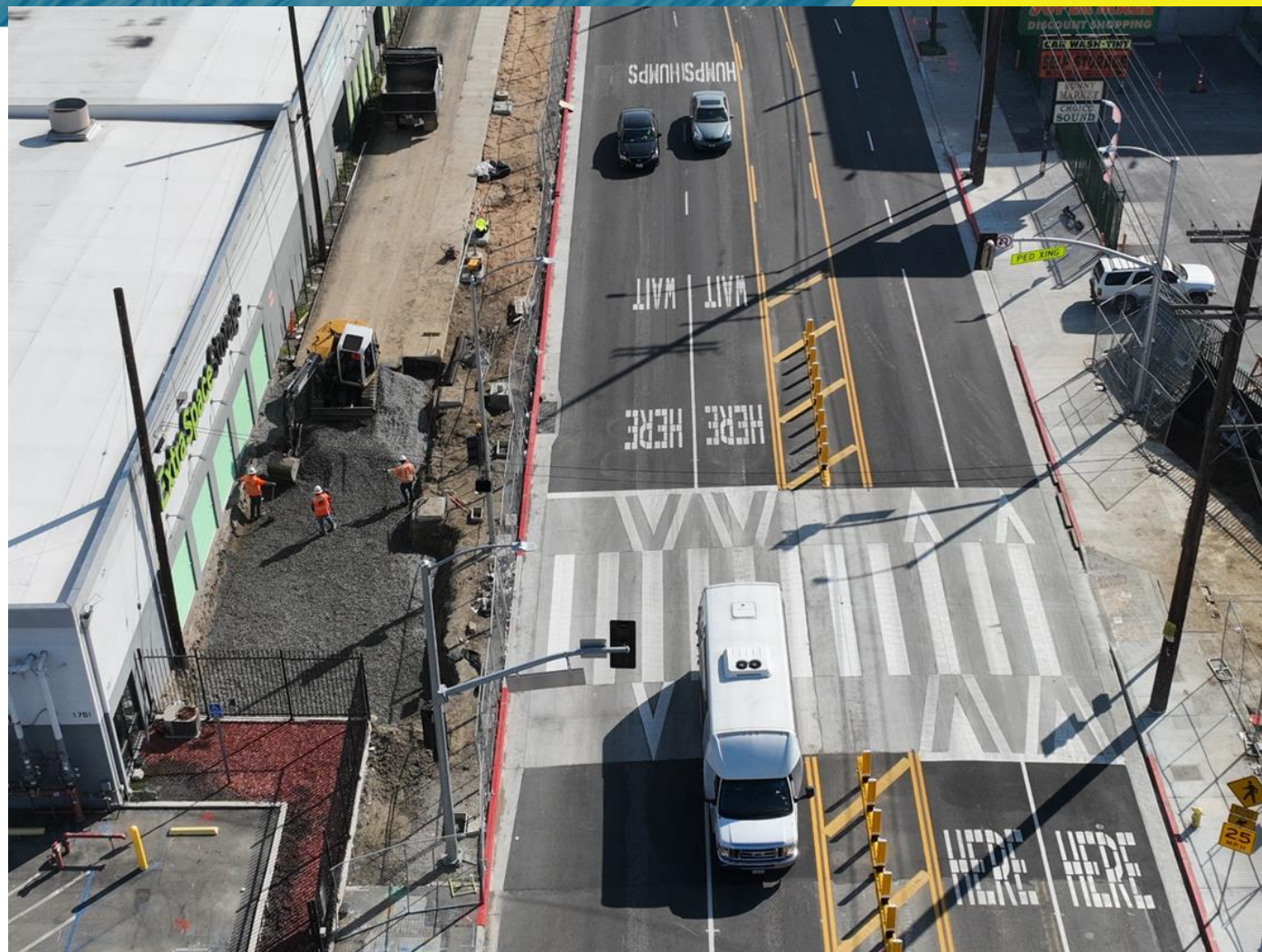


Rail to Rail Project: Work to Date

- > Abandoned rail equipment removed
- > Contaminated soils removed east of Main St and Slauson Av
- > Construction Contract Awarded to Griffith Company
- > Clearing work, demolition, and fence installation ongoing
- > Right of Way excavation complete
- > Intersection Improvement Work

8th Av
4th Av
Paloma Av
Towne Av
Vermont Av
Western Av
Hooper Av
McKinley Av

Budlong Av
Broadway
Slauson West of Denker
Van Ness Av
Compton Av
Cimarron Av
Hass Av



Slauson Av west of Denker Av

Current Activities



Fine Grading Metro Right of Way along Slauson Av



Field crew placed gravel in BMPs

Current : Normandie Av Intersection Improvement

Contractor began the intersection improvement work

- > **When:** February 2, 2024
- > **Where:** Normandie Av at Slauson Av.
- > **Duration:** approximately five months

What to Expect

- > **Stage 1A:** directional closure of northbound Normandie Av from Slauson Ave to 58th St.
- > **Stage 1B:** directional closure of northbound Normandie Av from 58th Pl to Slauson Av and Slauson Av to 58th St. **Will be implemented April 12**
- > **Stage 2:** directional closure of southbound Normandie Av between 58th St and the alley just south of the intersection of Slauson Av and Normandie Av.

Work hours

- > Workdays from Monday to Saturday
- > The closure will be in place for the duration of the activity



ADA Ramp construction at Normandie Av

Current: Slauson near Miramonte Bl Intersection Improvement

Contractor began the intersection improvement work

- > **When: February 23, 2024**
- > **Where:** Slauson Av. Near Miramonte Bl
- > **Duration:** approximately two months

What to Expect

- > Lane reductions on eastbound and westbound Slauson Av near Miramonte Bl

Work hours

- > Workdays from Monday to Saturday
- > The closure will be in place for the duration of the activity
- > **Will be picked up April 4**

Current: Hoover and SB 110 Ramp

Contractor began the intersection improvement work

- > **When:** March 25, 2024
- > **Where:** Hoover and Slauson Av and SB 110 off Ramp and Slauson Av
- > **Duration:** >Six weeks (SB 110 Off Ramp) and Three months (Hoover)

Hoover St and Slauson Intersection

- **Hoover Stage 1:** Northbound directional closure of Hoover St at Slauson Av and lane reduction on westbound Slauson Av
- **Hoover Stage 2:** Southbound directional closure of Hoover St at Slauson Av and lane reduction on westbound Slauson Av
- **SB 110 Ramp:** Southbound off ramp at Slauson Av reduced to one lane and lane reduction on westbound Slauson Av



Metro Right of Way under the 110 FWY west view

Current: Main St Intersection Improvement

Contractor began the intersection improvement work

- > **When:** March 16, 2024
- > **Where:** Main St at Slauson Av.
- > **Duration:** approximately five months

What to Expect:

- > Stage 1A: directional closure of northbound Main St. from Slauson Av to 58th St.
- > > Stage 1B: directional closure of northbound Main St. from W 59th St. to 58th St.
- > > Stage 2: directional closure of southbound Main St. between Slauson Av and 58th St.

Work hours:

- > Workdays from Monday to Saturday
- > The closure will be in place for the duration of the activity

Horizon : Central Av Intersection Improvement

- > **When:** April 5, 2024
- > **Where: Central** at Slauson Av.
- > **Duration:** approximately five months

What to Expect

- > **Stage 1:** Northbound directional closure of Central Av and lane reduction on westbound Slauson Av
- > **Stage 2:** Southbound directional closure of Central Av and lane reduction on westbound Slauson Av.

Work hours

- > Workdays from Monday to Saturday
- > The closure will be in place for the duration of the activity

Horizon: Figueroa St Intersection Improvement

- > **When:** Tentatively early July 2024
- > **Where:** Figueroa St and Slauson Av
- > **Duration:** Five months

What to Expect:

- > **Stage 1:** Center lanes on Figueroa St north of Slauson Av
- > **Stage 2A:** Lane reductions on northbound and southbound Figueroa north of Slauson Av and lane reductions on westbound Slauson Av
- > **Stage 2B:** Lane reductions on northbound and southbound Figueroa south of Slauson Av and lane reductions on eastbound Slauson Av

Work hours

- > Workdays from Monday to Saturday
- > The closure will be in place for the duration of the activity

Horizon: Avalon and San Pedro

- > **When:** As early as July 12, 2023
- > **Where:** Avalon and Slauson Av and San Pedro and Slauson Av
- > **Duration:** Five months (San Pedro St) and Six months (Avalon Bl)

What to Expect:

- **Avalon Stage 1:** Northbound directional closure of Avalon at Slauson Av and lane reduction on westbound Slauson Av
- **Avalon Stage 1B:** Southbound directional closure of Avalon at Slauson Av and lane reduction on westbound Slauson Av
- **Avalon Stage 2:** Slauson Av reduced to a lane in each direction, Avalon south of Slauson reduced to a lane in each direction

- **San Pedro Stage 1A:** Southbound directional closure of San Pedro Av at Slauson and lane reduction on westbound Slauson Av
- **San Pedro Stage 1B:** Southbound directional closure of San Pedro Av, north of Slauson Av. Southbound San Pedro from Slauson reduced to one lane south of Slauson Av. Eastbound Slauson reduced to one lane at the intersection
- **San Pedro Stage 2A:** Northbound directional closure of San Pedro Av at Slauson and lane reduction on westbound Slauson Av
- **San Pedro Stage 2B:** Northbound directional closure of San Pedro Ave, north of Slauson Av. Northbound San Pedro south of Slauson reduced to one lane south of Slauson Av. Eastbound Slauson reduced to one lane east of the intersection

Work hours

- > Workdays from Monday to Saturday
- > The closure will be in place for the duration of the activity

Horizon: Denker Av Intersection Improvement

- > **When:** Tentatively end of July 2024
- > **Where:** Denker Av and Slauson Av
- > **Duration:** Four months

What to Expect:

- > **Stage 1A:** Directional closure of northbound Denker Av and lane reductions on westbound Slauson Av
- > **Stage 1B:** Directional closure of southbound Denker Av and lane reductions on westbound Slauson Av
- > **Stage 2:** Full closure of Denker Av from Slauson Av to just south of Slauson Av and lane reductions on Slauson in both directions

Work hours

- > Workdays from Monday to Saturday
- > The closure will be in place for the duration of the activity

Stay In Touch



213.922.9228



r2r@metro.net



www.metro.net/projects/railtorivera/

The Project hosts quarterly community meetings

THANK YOU

A bright yellow speech bubble is centered on a solid blue background. The words "THANK YOU" are cut out of the bubble in a bold, blue, sans-serif font. The bubble has a pointed tail at the bottom right, and the cutout text reveals the blue background underneath.

Current: Haas Av

Contractor will begin the intersection improvement work

- > **When: November 27, 2023**
- > **Where: Haas Av between north 62nd St.**
- > **Duration: 1 month (90% complete)**

What to Expect

- > Parking restrictions will be in place on both sides of Haas Av

Work hours

- > 7:00 am to 4:00 pm Monday – Friday
- > As needed to finish the work

