

Appendix K FLOODPLAIN INSURANCE RATE MAPS

This page intentionally left blank

6505000 FT
118°11'15.00"
34°00'00.00"

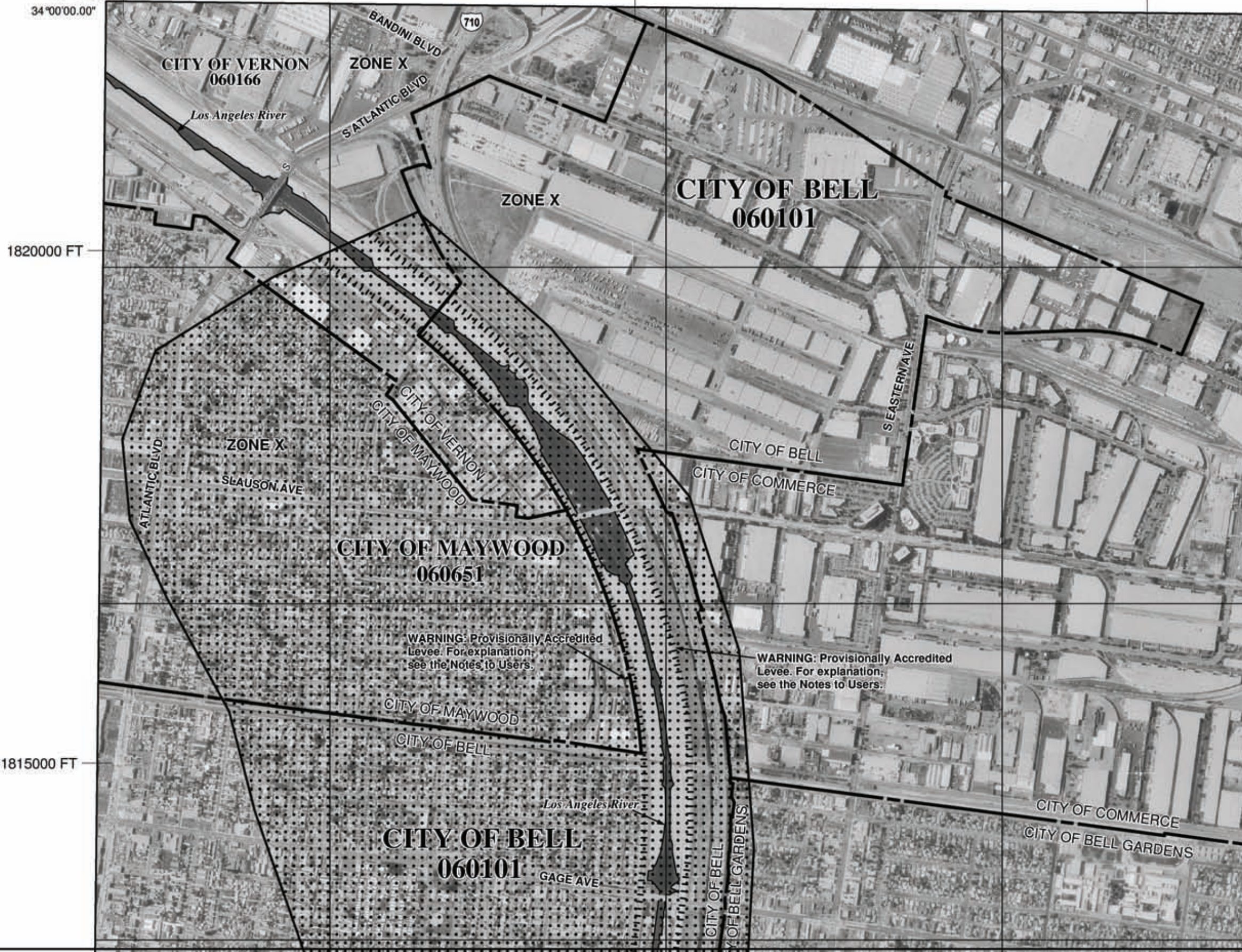
JOINS PANEL 1643

6510000 FT

6515000 FT



MAP SCALE 1" = 1000'
500 0 1000 2000 FEET
ME



NFIP PANEL 1810F


FIRM
FLOOD INSURANCE RATE MAP
LOS ANGELES COUNTY,
CALIFORNIA
AND INCORPORATED AREAS

PANEL 1810 OF 2350
(SEE MAP INDEX FOR FIRM PANEL LAYOUT)

CONTAINS:

COMMUNITY	NUMBER	PANEL	SUFFIX
BELL GARDENS, CITY OF	06056	1810	F
BELL, CITY OF	060101	1810	F
COMMERCE, CITY OF	06010	1810	F
CUDAHY, CITY OF	06057	1810	F
DOWNNEY, CITY OF	06045	1810	F
MAYWOOD, CITY OF	06051	1810	F
MONTEBELLO, CITY OF	06041	1810	F
SOUTH GATE, CITY OF	06083	1810	F
VERNON, CITY OF	06086	1810	F

Notes to User: The Map Number shown below should be used when placing map orders; the Community Number shown above should be used on insurance applications for the subject community.

 MAP NUMBER
06037C1810F
EFFECTIVE DATE
SEPTEMBER 26, 2008

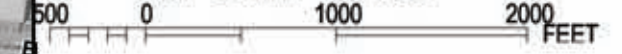
Federal Emergency Management Agency

This is an official copy of a portion of the above referenced flood map. It was extracted using F-MIT On-Line. This map does not reflect changes or amendments which may have been made subsequent to the date on the title block. For the latest product information about National Flood Insurance Program flood maps check the FEMA Flood Map Store at www.msc.fema.gov

If insurance is available in this community, contact your National Flood Insurance Program at 1-800-638-6620.



MAP SCALE 1" = 1000'



NATIONAL FLOOD INSURANCE PROGRAM

NFIP PANEL 1810F

FIRM
FLOOD INSURANCE RATE MAP
LOS ANGELES COUNTY,
CALIFORNIA
AND INCORPORATED AREAS

PANEL 1810 OF 2350
(SEE MAP INDEX FOR FIRM PANEL LAYOUT)

CONTAINS:

COMMUNITY	NUMBER	PANEL	SUFFIX
BELL GARDENS, CITY OF	06066	1810	F
BELL, CITY OF	060101	1810	F
COMMERCE, CITY OF	06010	1810	F
CUDAHY, CITY OF	06067	1810	F
DOWNY, CITY OF	06045	1810	F
MAYWOOD, CITY OF	06061	1810	F
MONTEBELLO, CITY OF	06041	1810	F
SOUTH GATE, CITY OF	06083	1810	F
VERNON, CITY OF	06086	1810	F

Notice to User: The Map Number shown below should be used when placing map orders; the Community Number shown above should be used on insurance applications for the subject community.

MAP NUMBER
06037C1810F

EFFECTIVE DATE
SEPTEMBER 26, 2008

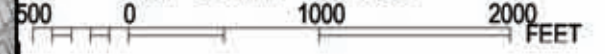
Federal Emergency Management Agency

This is an official copy of a portion of the above referenced flood map. It was extracted using F-MIT On-Line. This map does not reflect changes or amendments which may have been made subsequent to the date on the title block. For the latest product information about National Flood Insurance Program flood maps check the FEMA Flood Map Store at www.msc.fema.gov

Flood insurance is available in this community, contact your local Flood Insurance Program at 1-800-638-6620.



MAP SCALE 1" = 1000'



NFIP PANEL 1810F

FIRM FLOOD INSURANCE RATE MAP
LOS ANGELES COUNTY, CALIFORNIA
AND INCORPORATED AREAS

PANEL 1810 OF 2350
 (SEE MAP INDEX FOR FIRM PANEL LAYOUT)

CONTAINS:

COMMUNITY	NUMBER	PANEL	SUFFIX
BELL GARDENS, CITY OF	06056	1810	F
BELL, CITY OF	060101	1810	F
COMMERCE, CITY OF	060110	1810	F
CUDAHY, CITY OF	06057	1810	F
DOWNNEY, CITY OF	06045	1810	F
MAYWOOD, CITY OF	06051	1810	F
MONTEBELLO, CITY OF	06041	1810	F
SOUTH GATE, CITY OF	06183	1810	F
VERNON, CITY OF	06186	1810	F

Notes to User: The Map Number shown below should be used when placing map orders; the Community Number shown above should be used on insurance applications for the subject community.

MAP NUMBER
06037C1810F

EFFECTIVE DATE
SEPTEMBER 26, 2008

Federal Emergency Management Agency

WARNING: Area protected by Provisionally Accredited Levee. For explanation, see the Notes to Users.

WARNING: Provisionally Accredited Levee. For explanation, see the Notes to Users.

WARNING: Provisionally Accredited Levee. For explanation, see the Notes to Users.

5000 FT

1000 FT

3°56'15.00"

118°11'15.00"

391°00'00"E

392°00'00"E

393°00'00"E

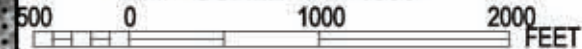
JOINS PANEL 1820

This is an official copy of a portion of the above referenced flood map. It was extracted using F-MIT On-Line. This map does not reflect changes or amendments which may have been made subsequent to the date on the title block. For the latest product information about National Flood Insurance Program flood maps check the FEMA Flood Map Store at www.msc.fema.gov

If insurance is available in this community, contact your local Flood Insurance Program at 1-800-638-6620.



MAP SCALE 1" = 1000'



6505000 FT
118°11'15.00"
33°56'15.00"
6510000 FT
JOINS PANEL 1810
6515000 FT

WARNING: Area protected by Provisionally Accredited Levee. For explanation, see the Notes to Users.



NATIONAL FLOOD INSURANCE PROGRAM

PANEL 1820F

FIRM
FLOOD INSURANCE RATE MAP
LOS ANGELES COUNTY,
CALIFORNIA
AND INCORPORATED AREAS

PANEL 1820 OF 2350
(SEE MAP INDEX FOR FIRM PANEL LAYOUT)

CONTAINS:

COMMUNITY	NUMBER	PANEL	SUFFIX
LOS ANGELES COUNTY	065043	1820	F
BELLFLOWER, CITY OF	060102	1820	F
COMPTON, CITY OF	060111	1820	F
DOWNNEY, CITY OF	060645	1820	F
LONG BEACH, CITY OF	060136	1820	F
LYNWOOD, CITY OF	060635	1820	F
PARAMOUNT, CITY OF	060049	1820	F
SOUTH GATE, CITY OF	060163	1820	F

Notice to User: The Map Number shown below should be used when placing map orders; the Community Number shown above should be used on insurance applications for the subject community.

MAP NUMBER
06037C1820F

EFFECTIVE DATE
SEPTEMBER 26, 2008

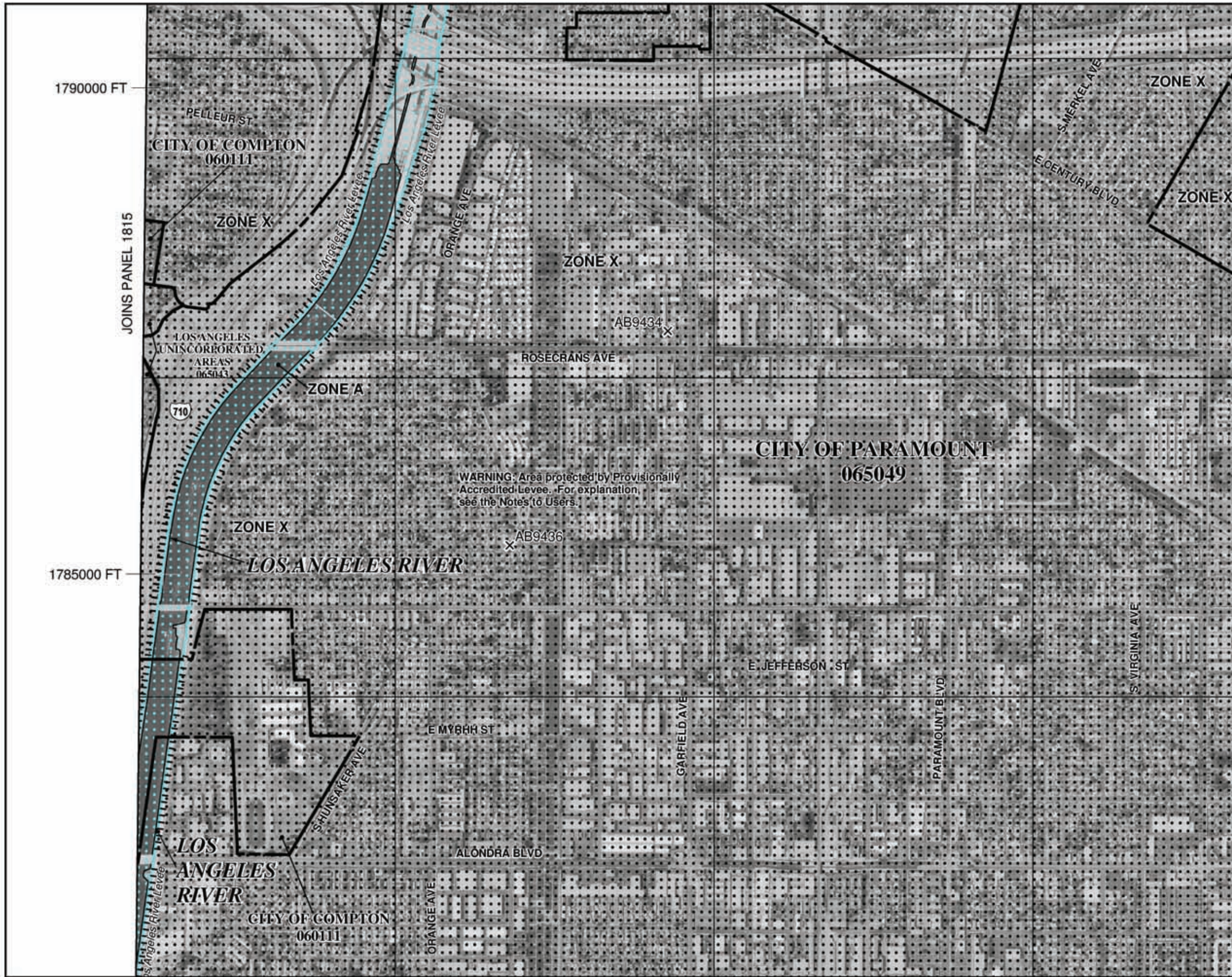
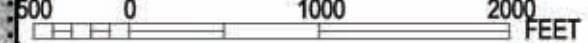
Federal Emergency Management Agency

This is an official copy of a portion of the above referenced flood map. It was extracted using F-MIT On-Line. This map does not reflect changes or amendments which may have been made subsequent to the date on the title block. For the latest product information about National Flood Insurance Program flood maps check the FEMA Flood Map Store at www.msc.fema.gov

If insurance is available in this community, contact your National Flood Insurance Program at 1-800-638-6620.



MAP SCALE 1" = 1000'



NATIONAL FLOOD INSURANCE PROGRAM

NFIP

PANEL 1820F

FIRM
FLOOD INSURANCE RATE MAP
LOS ANGELES COUNTY,
CALIFORNIA
AND INCORPORATED AREAS

PANEL 1820 OF 2350
(SEE MAP INDEX FOR FIRM PANEL LAYOUT)

CONTAINS:

COMMUNITY	NUMBER	PANEL	SUFFIX
LOS ANGELES COUNTY	065043	1820	F
BELLFLOWER, CITY OF	060102	1820	F
COMPTON, CITY OF	060111	1820	F
DOWNY, CITY OF	060645	1820	F
LONG BEACH, CITY OF	060136	1820	F
LYNWOOD, CITY OF	060635	1820	F
PARAMOUNT, CITY OF	065049	1820	F
SOUTH GATE, CITY OF	060163	1820	F

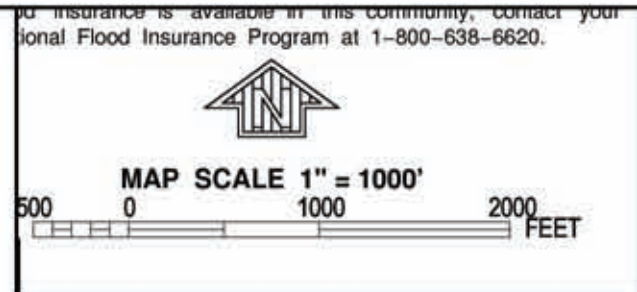
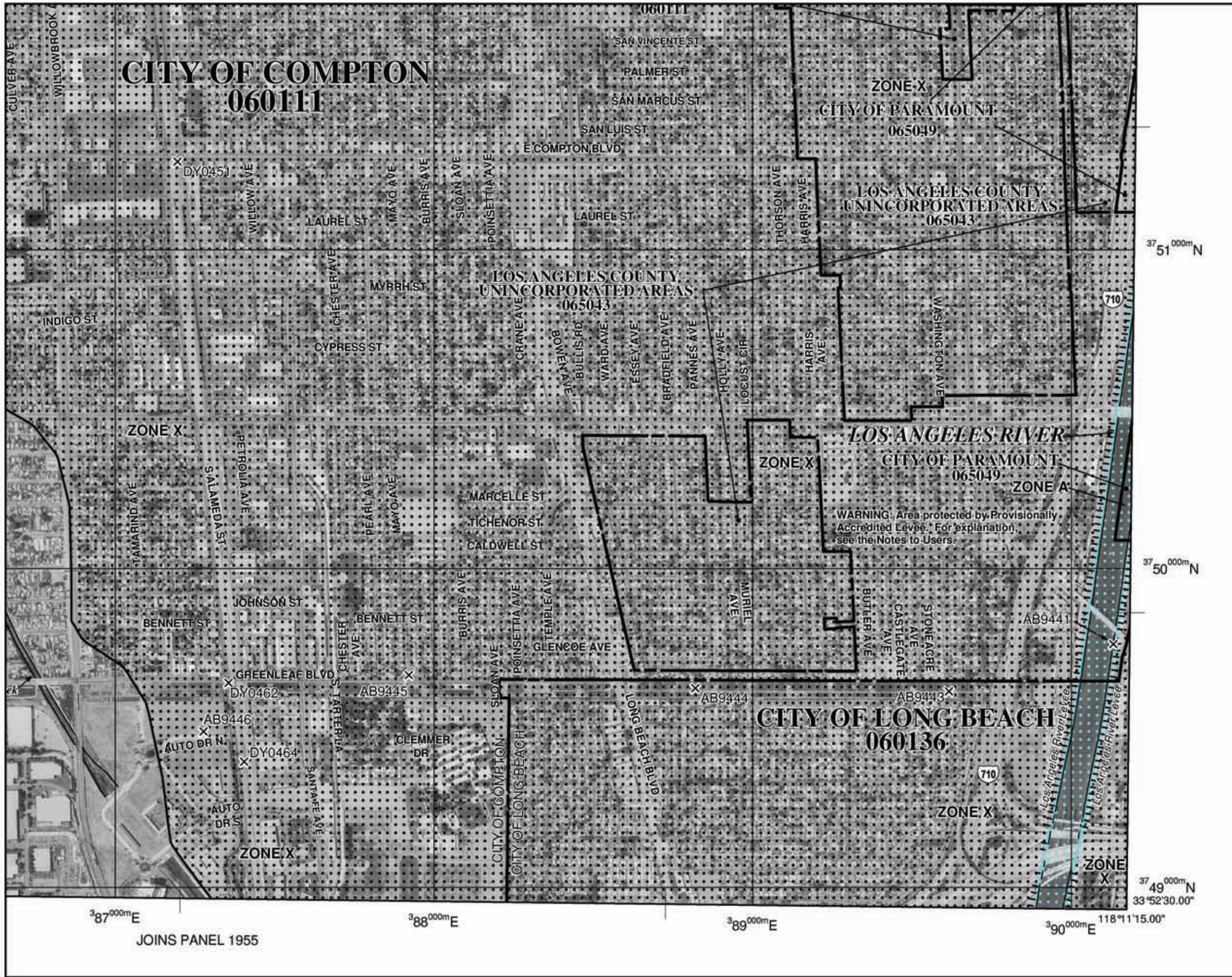
Notice to User: The Map Number shown below should be used when placing map orders; the Community Number shown above should be used on insurance applications for the subject community.

MAP NUMBER
06037C1820F

EFFECTIVE DATE
SEPTEMBER 26, 2008

Federal Emergency Management Agency

This is an official copy of a portion of the above referenced flood map. It was extracted using F-MIT On-Line. This map does not reflect changes or amendments which may have been made subsequent to the date on the title block. For the latest product information about National Flood Insurance Program flood maps check the FEMA Flood Map Store at www.msc.fema.gov



Insurance is available in this community, contact your local Flood Insurance Program at 1-800-638-6620.

NATIONAL FLOOD INSURANCE PROGRAM

PANEL 1815F

FIRM
FLOOD INSURANCE RATE MAP
LOS ANGELES COUNTY,
CALIFORNIA
AND INCORPORATED AREAS

PANEL 1815 OF 2350
 (SEE MAP INDEX FOR FIRM PANEL LAYOUT)

CONTAINS:

COMMUNITY	NUMBER	PANEL	SUFFIX
LOS ANGELES COUNTY	065043	1815	F
CARSON, CITY OF	060107	1815	F
COMPTON, CITY OF	060111	1815	F
LONG BEACH, CITY OF	060136	1815	F
LOS ANGELES, CITY OF	060137	1815	F
LYNWOOD, CITY OF	060635	1815	F
PARAMOUNT, CITY OF	060049	1815	F
SOUTH GATE, CITY OF	060163	1815	F

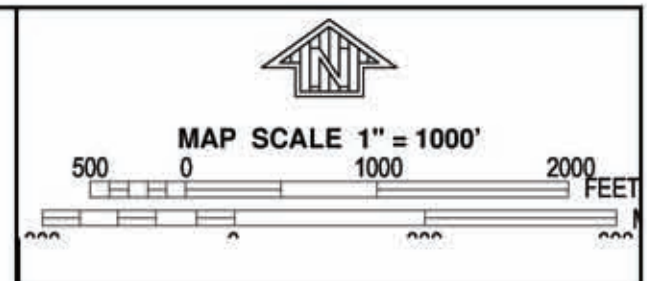
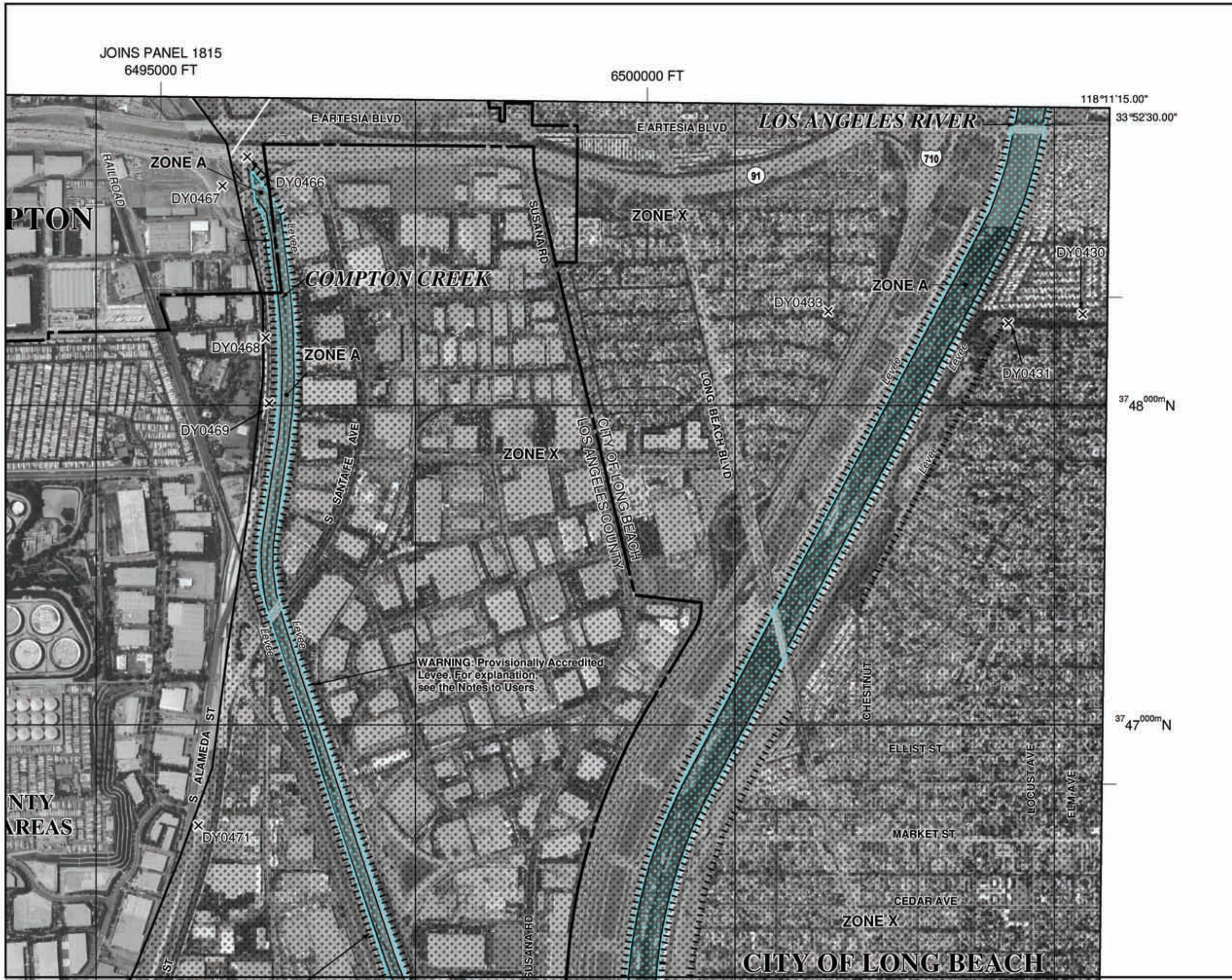
Notice to User: The Map Number shown below should be used when placing map orders; the Community Number shown above should be used on insurance applications for the subject community.

MAP NUMBER
06037C1815F

EFFECTIVE DATE
SEPTEMBER 26, 2008

Federal Emergency Management Agency

This is an official copy of a portion of the above referenced flood map. It was extracted using F-MIT On-Line. This map does not reflect changes or amendments which may have been made subsequent to the date on the title block. For the latest product information about National Flood Insurance Program flood maps check the FEMA Flood Map Store at www.msc.fema.gov



NFIP
PANEL 1955F

FIRM
FLOOD INSURANCE RATE MAP
LOS ANGELES COUNTY,
CALIFORNIA
AND INCORPORATED AREAS

PANEL 1955 OF 2350
(SEE MAP INDEX FOR FIRM PANEL LAYOUT)

CONTAINS:

COMMUNITY	NUMBER	PANEL	SUFFIX
LOS ANGELES COUNTY	065043	1955	F
CARSON, CITY OF	060107	1955	F
COMPTON, CITY OF	060111	1955	F
LONG BEACH, CITY OF	060136	1955	F
LOS ANGELES, CITY OF	060137	1955	F

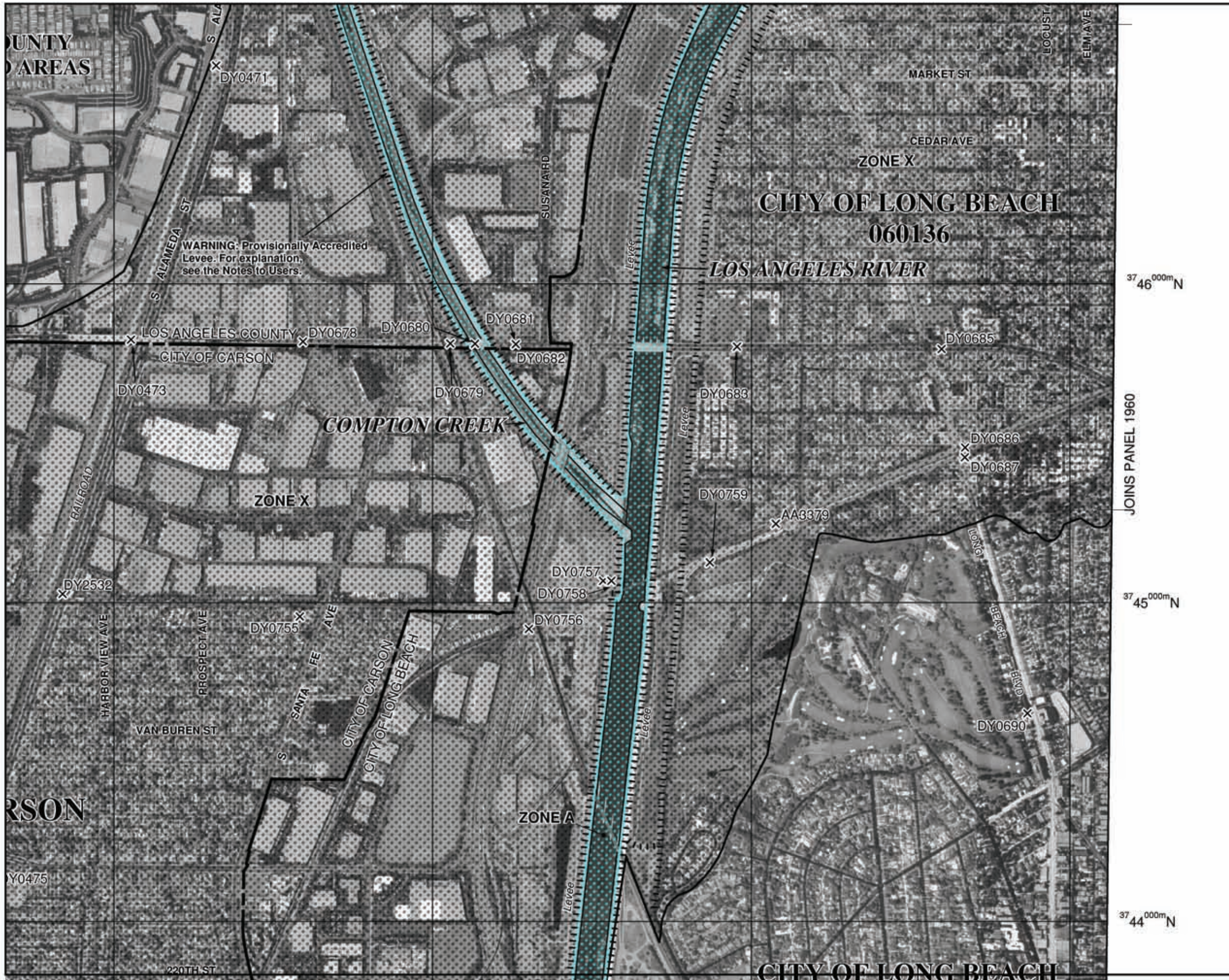
Notice to User: The Map Number shown below should be used when placing map orders; the Community Number shown above should be used on insurance applications for the subject community.

MAP NUMBER
06037C1955F

EFFECTIVE DATE
SEPTEMBER 26, 2008

Federal Emergency Management Agency

This is an official copy of a portion of the above referenced flood map. It was extracted using F-MIT On-Line. This map does not reflect changes or amendments which may have been made subsequent to the date on the title block. For the latest product information about National Flood Insurance Program flood maps check the FEMA Flood Map Store at www.msc.fema.gov



National Flood Insurance Program at 1-800-638-6620.

MAP SCALE 1" = 1000'

37 46^{000m} N

JOINS PANEL 1960

37 45^{000m} N

37 44^{000m} N

NATIONAL FLOOD INSURANCE PROGRAM

PANEL 1955F

FIRM
FLOOD INSURANCE RATE MAP
LOS ANGELES COUNTY,
CALIFORNIA
AND INCORPORATED AREAS

PANEL 1955 OF 2350
(SEE MAP INDEX FOR FIRM PANEL LAYOUT)

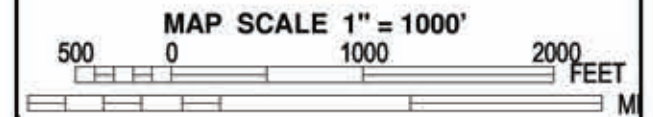
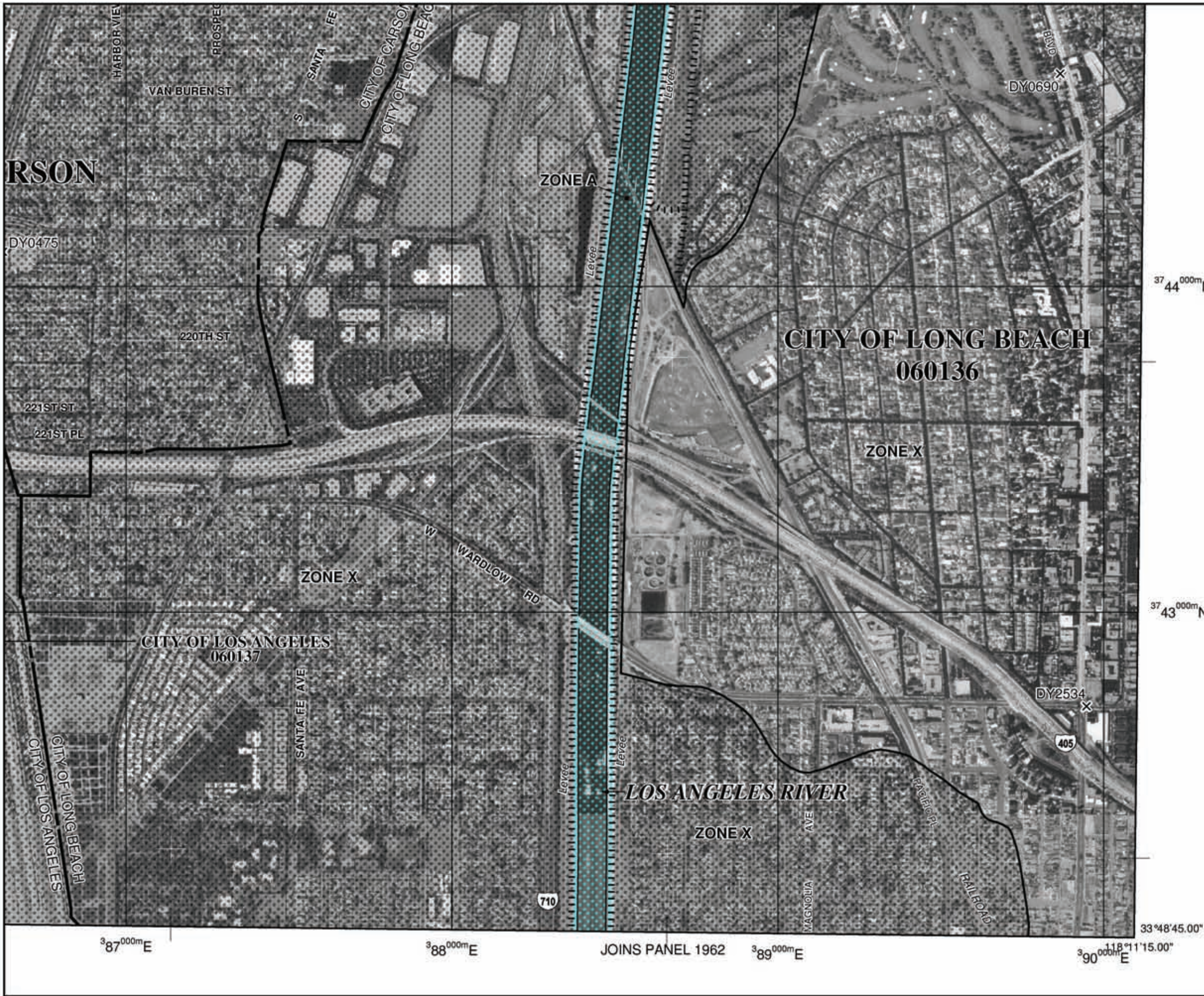
CONTAINS:

COMMUNITY	NUMBER	PANEL	SUFFIX
LOS ANGELES COUNTY	085043	1955	F
CARSON, CITY OF	060107	1955	F
COMPTON, CITY OF	060111	1955	F
LONG BEACH, CITY OF	060136	1955	F
LOS ANGELES, CITY OF	060137	1955	F

Notice to User: The Map Number shown below should be used when placing map orders; the Community Number shown above should be used on insurance applications for the subject community.

MAP NUMBER
06037C1955F
EFFECTIVE DATE
SEPTEMBER 26, 2008
Federal Emergency Management Agency

This is an official copy of a portion of the above referenced flood map. It was extracted using F-MIT On-Line. This map does not reflect changes or amendments which may have been made subsequent to the date on the title block. For the latest product information about National Flood Insurance Program flood maps check the FEMA Flood Map Store at www.msc.fema.gov



NFIP

PANEL 1955F

NATIONAL FLOOD INSURANCE PROGRAM

FIRM
FLOOD INSURANCE RATE MAP
LOS ANGELES COUNTY,
CALIFORNIA
AND INCORPORATED AREAS

PANEL 1955 OF 2350
 (SEE MAP INDEX FOR FIRM PANEL LAYOUT)

CONTAINS:

COMMUNITY	NUMBER	PANEL	SUFFIX
LOS ANGELES COUNTY	06043	1955	F
CARSON, CITY OF	060107	1955	F
COMPTON, CITY OF	060111	1955	F
LONG BEACH, CITY OF	060136	1955	F
LOS ANGELES, CITY OF	060137	1955	F

Notice to User: The Map Number shown below should be used when placing map orders; the Community Number shown above should be used on insurance applications for the subject community.

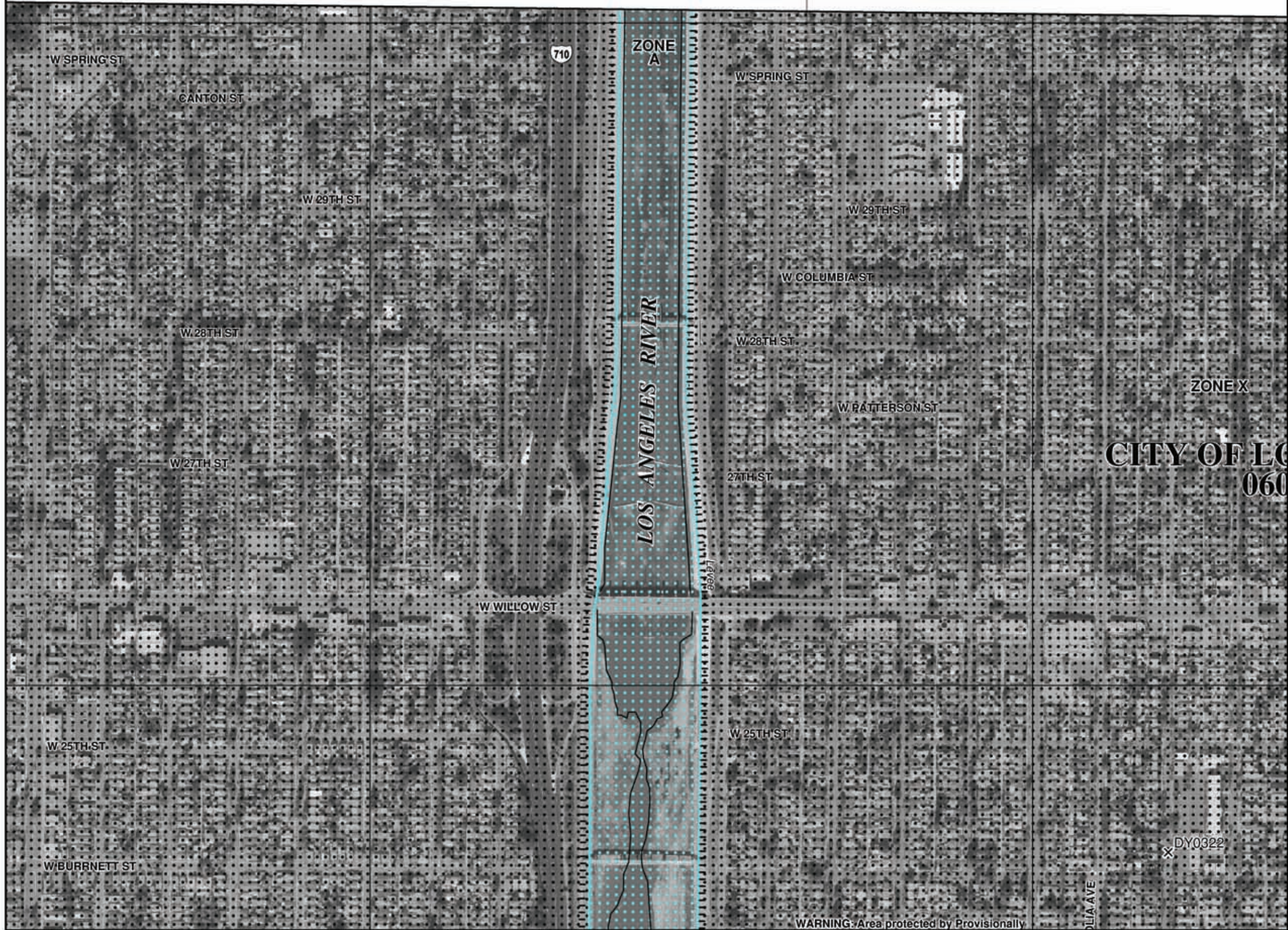
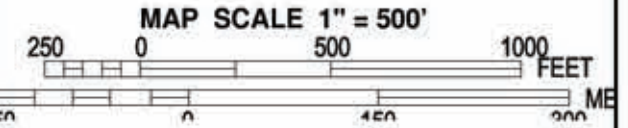


MAP NUMBER
06037C1955F
 EFFECTIVE DATE
SEPTEMBER 26, 2008

Federal Emergency Management Agency

This is an official copy of a portion of the above referenced flood map. It was extracted using F-MIT On-Line. This map does not reflect changes or amendments which may have been made subsequent to the date on the title block. For the latest product information about National Flood Insurance Program flood maps check the FEMA Flood Map Store at www.msc.fema.gov

JOINS PANEL 1955
650000 FT



NFP PANEL 1962F


FIRM
FLOOD INSURANCE RATE MAP
LOS ANGELES COUNTY,
CALIFORNIA
AND INCORPORATED AREAS

PANEL 1962 OF 2350
(SEE MAP INDEX FOR FIRM PANEL LAYOUT)

CONTAINS:

COMMUNITY	NUMBER	PANEL	SUFFIX
LONG BEACH, CITY OF	060136	1962	F

Notice to User: The Map Number shown below should be used when placing map orders; the Community Number shown above should be used on insurance applications for the subject community.

 **MAP NUMBER**
06037C1962F
EFFECTIVE DATE
SEPTEMBER 26, 2008

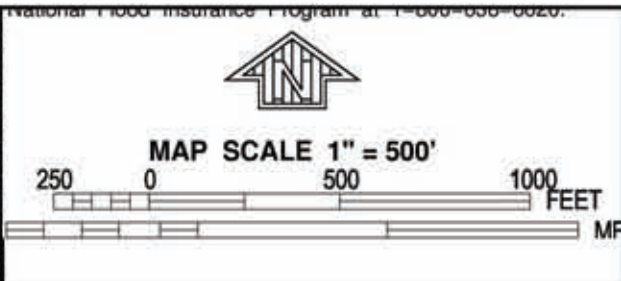
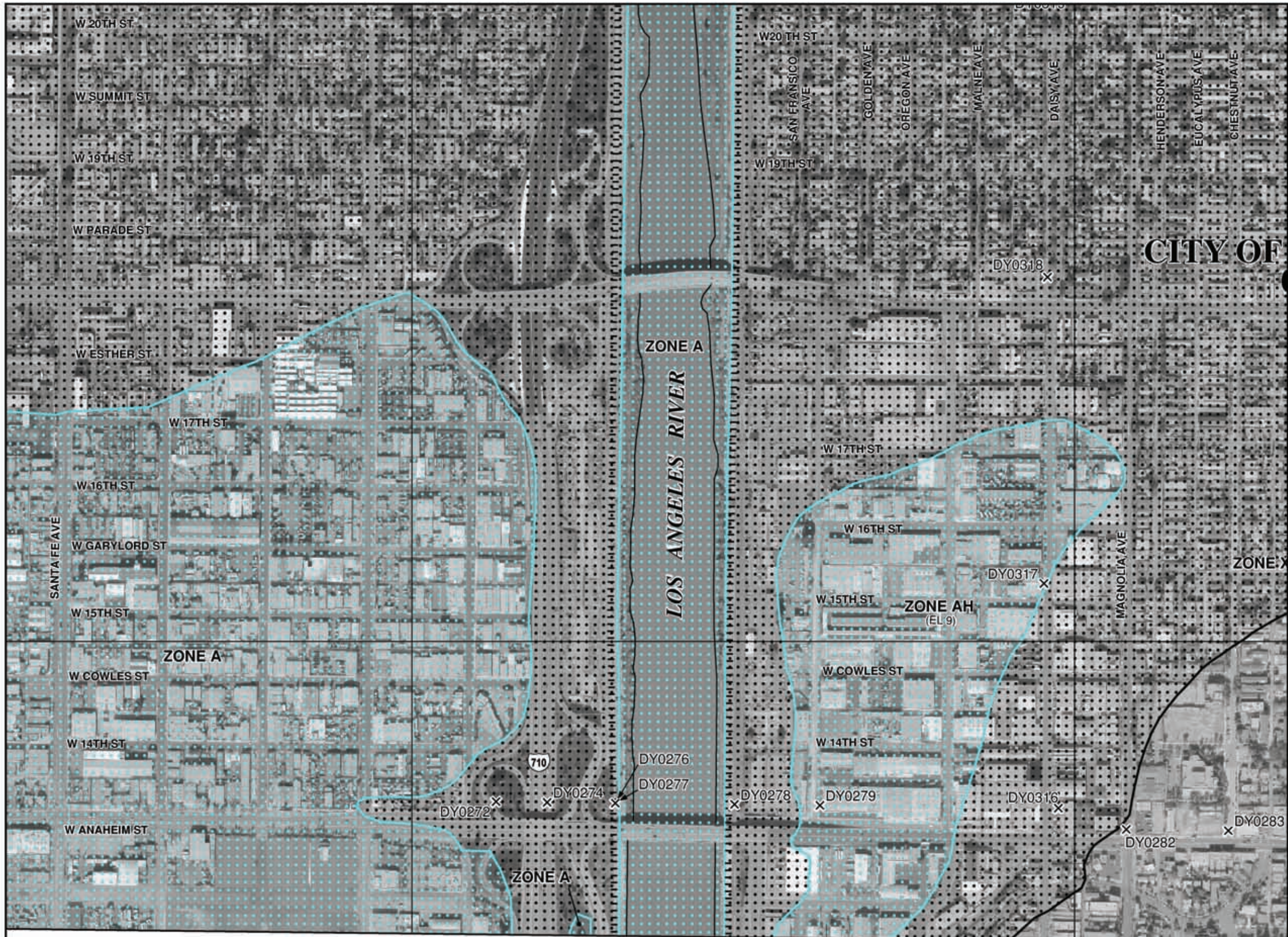
Federal Emergency Management Agency

CITY OF LONG BEACH
060

DY0322

WARNING: Area protected by Provisionally

This is an official copy of a portion of the above referenced flood map. It was extracted using F-MIT On-Line. This map does not reflect changes or amendments which may have been made subsequent to the date on the title block. For the latest product information about National Flood Insurance Program flood maps check the FEMA Flood Map Store at www.msc.fema.gov



CITY OF

NFP PANEL 1962F

FIRM
FLOOD INSURANCE RATE MAP
LOS ANGELES COUNTY,
CALIFORNIA
AND INCORPORATED AREAS

PANEL 1962 OF 2350
 (SEE MAP INDEX FOR FIRM PANEL LAYOUT)

CONTAINS:

COMMUNITY	NUMBER	PANEL	SUFFIX
LONG BEACH, CITY OF	06036	1962	F

Notes to User: The Map Number shown below should be used when placing map orders; the Community Number shown above should be used on insurance applications for the subject community.

MAP NUMBER
06037C1962F
EFFECTIVE DATE
SEPTEMBER 26, 2008

Federal Emergency Management Agency

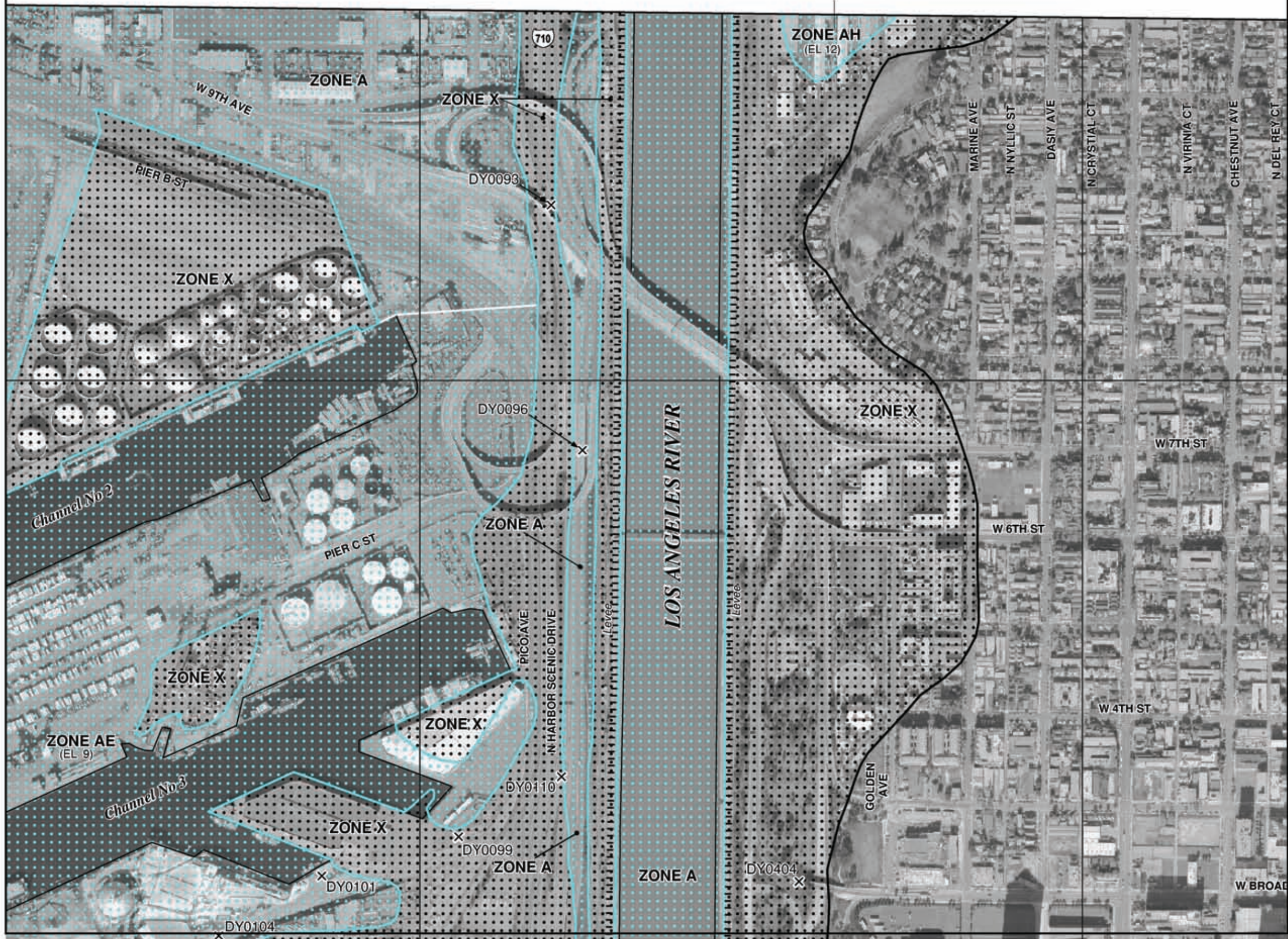
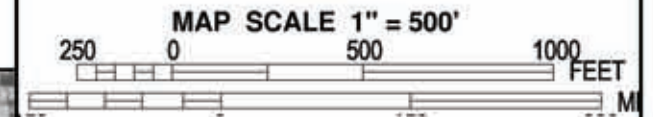
388^{000m}E

JOINS PANEL 1964

389^{000m}E

This is an official copy of a portion of the above referenced flood map. It was extracted using F-MIT On-Line. This map does not reflect changes or amendments which may have been made subsequent to the date on the title block. For the latest product information about National Flood Insurance Program flood maps check the FEMA Flood Map Store at www.msc.fema.gov

JOINS PANEL 1962
6500000 FT



NFP PANEL 1964F


FIRM
FLOOD INSURANCE RATE MAP
LOS ANGELES COUNTY,
CALIFORNIA
AND INCORPORATED AREAS

PANEL 1964 OF 2350
(SEE MAP INDEX FOR FIRM PANEL LAYOUT)

CONTAINS:

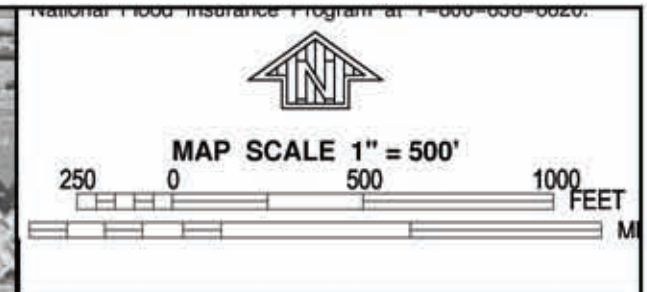
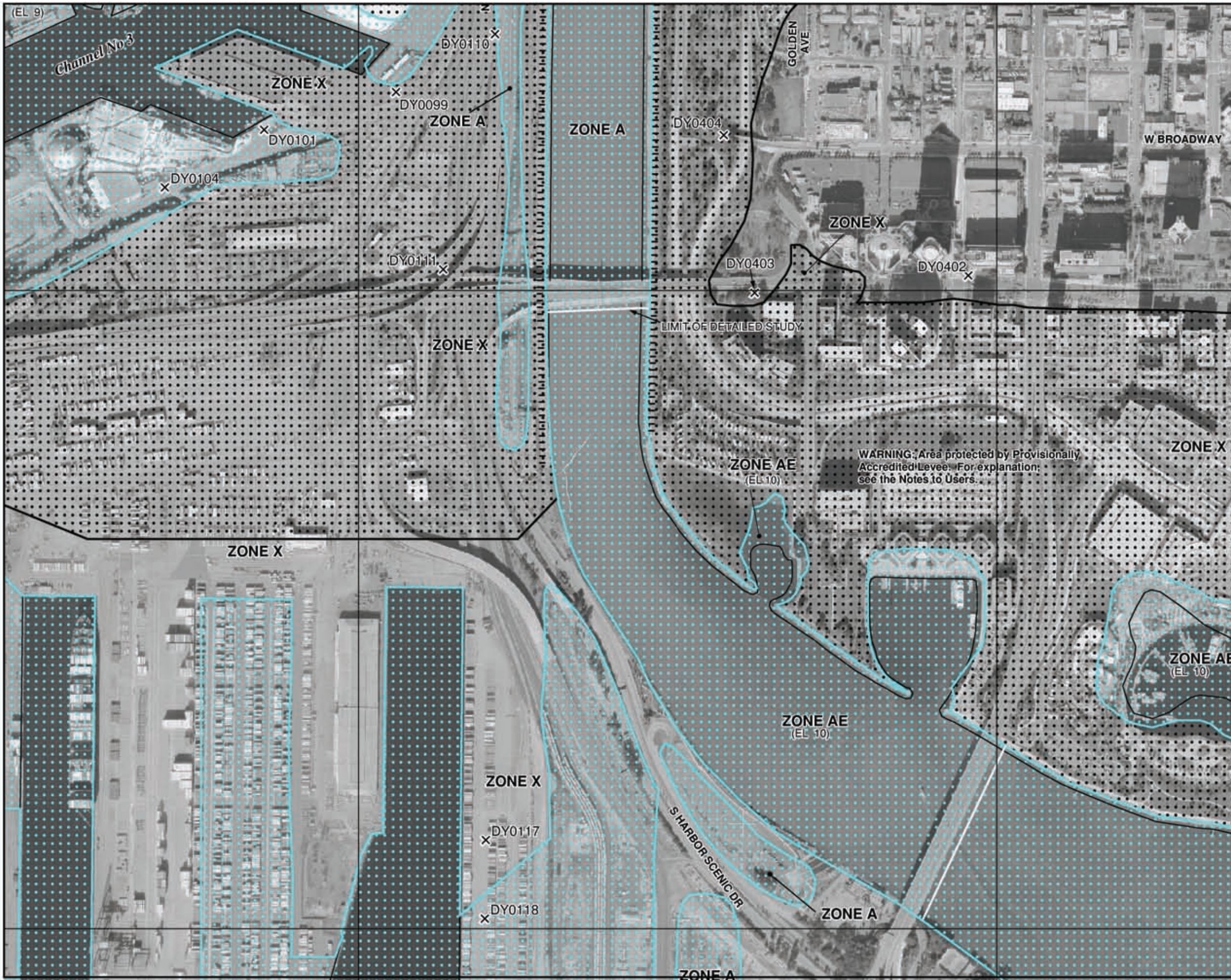
COMMUNITY	NUMBER	PANEL	SUFFIX
LONG BEACH, CITY OF	060136	1964	F

Notes to User: The Map Number shown below should be used when placing map orders; the Community Number shown above should be used on insurance applications for the subject community.

 **MAP NUMBER**
06037C1964F
EFFECTIVE DATE
SEPTEMBER 26, 2008

Federal Emergency Management Agency

This is an official copy of a portion of the above referenced flood map. It was extracted using F-MIT On-Line. This map does not reflect changes or amendments which may have been made subsequent to the date on the title block. For the latest product information about National Flood Insurance Program flood maps check the FEMA Flood Map Store at www.msc.fema.gov



NATIONAL FLOOD INSURANCE PROGRAM

PANEL 1964F

FIRM
FLOOD INSURANCE RATE MAP
LOS ANGELES COUNTY,
CALIFORNIA
AND INCORPORATED AREAS

PANEL 1964 OF 2350
(SEE MAP INDEX FOR FIRM PANEL LAYOUT)

CONTAINS:

COMMUNITY	NUMBER	PANEL	SUFFIX
LONG BEACH, CITY OF	060136	1964	F

Notes to User: The Map Number shown below should be used when placing map orders; the Community Number shown above should be used on insurance applications for the subject community.

MAP NUMBER
06037C1964F

EFFECTIVE DATE
SEPTEMBER 26, 2008

Federal Emergency Management Agency

This is an official copy of a portion of the above referenced flood map. It was extracted using F-MIT On-Line. This map does not reflect changes or amendments which may have been made subsequent to the date on the title block. For the latest product information about National Flood Insurance Program flood maps check the FEMA Flood Map Store at www.msc.fema.gov

This page intentionally left blank