

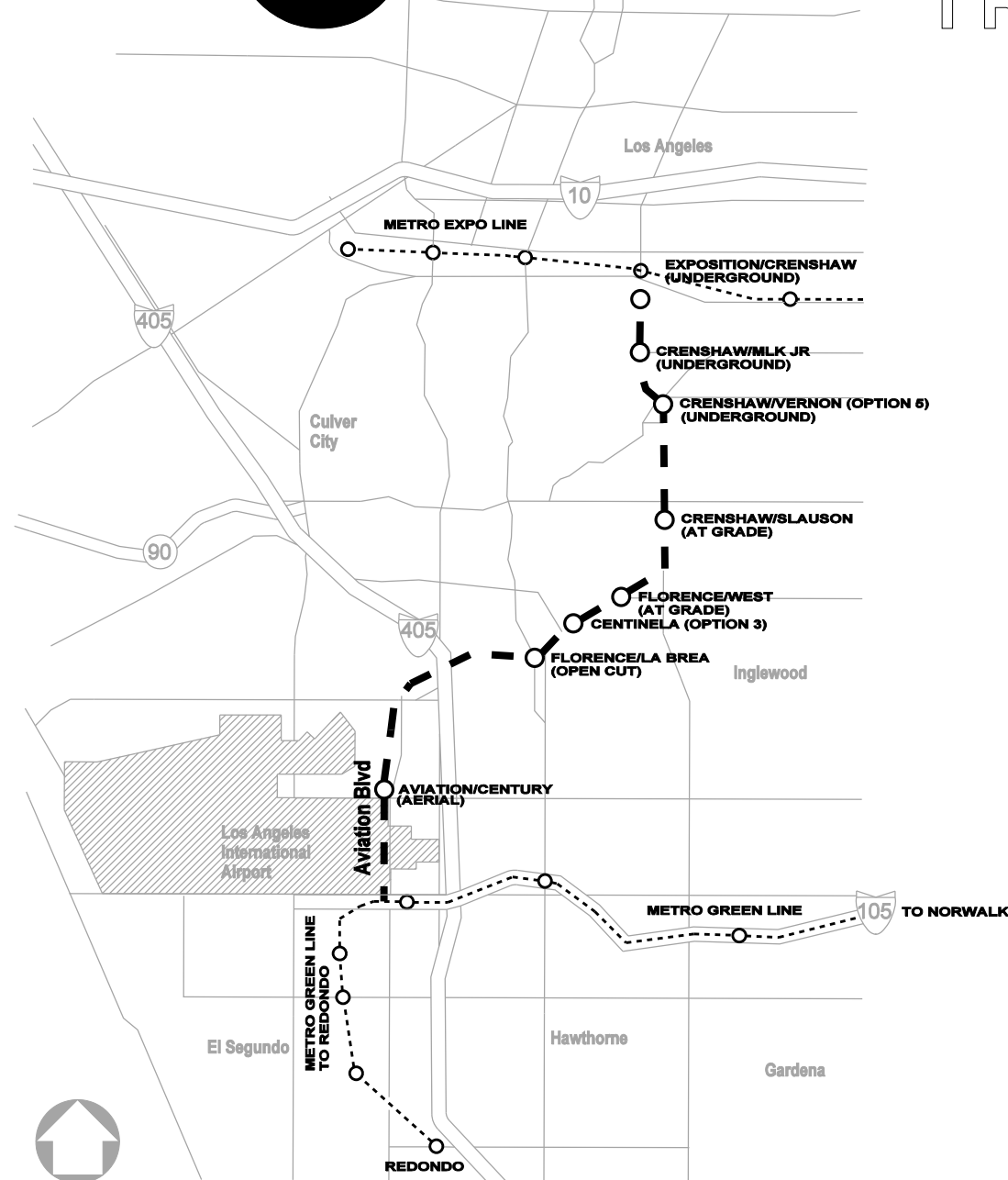
Crenshaw/LAX Transit Corridor

Final Environmental Impact Statement/Final Environmental Impact Report
Volume II, Appendix A - Engineering Drawings
August 2011





LOS ANGELES COUNTY METROPOLITAN TRANSPORTATION AUTHORITY



CRENSHAW/LAX TRANSIT CORRIDOR PROJECT

BASE PROJECT ENGINEERING PLAN SET

DECEMBER 10, 2010

USER=sto99999 11:43:46 AM 12/9/2010 c:\pwworking\hmm\st099999\dms02789\CLG001.plt
 Pentable=MTA.TBL Plot Driver=pdf_11x17_rev1.plt

THE PREPARATION OF THIS DRAWING HAS BEEN FINANCED IN PART THROUGH A GRANT FROM THE U.S. DEPARTMENT OF TRANSPORTATION, FEDERAL TRANSIT ADMINISTRATION (FTA), UNDER THE FEDERAL TRANSIT ACT OF 1964, AS AMENDED, AND IN PART BY THE TAXES OF THE CITIZENS OF LOS ANGELES COUNTY AND OF THE STATE OF CALIFORNIA.						
REV	DATE	BY	APP	REG NO	EXPIRES	DESCRIPTION

DESIGNED BY A. GIBBONS
DRAWN BY A. GIBBONS
CHECKED BY L. ABRAMSON
IN CHARGE G. HEAD
DATE 12-10-10

FOR REVIEW
ONLY NOT FOR
CONSTRUCTION
LEE W ABRAMSON
C44285

LOS ANGELES COUNTY METROPOLITAN
TRANSPORTATION AUTHORITY

6151 W. Century Blvd.
Suite 800
Los Angeles, CA 90045
Phone: 310-337-0500
Fax: 310-337-0042

BASE PROJECT	
CRENSHAW/LAX TRANSIT CORRIDOR PROJECT	
TITLE SHEET	
CONTRACT NO E0117	REV
DRAWING NO G-001	
SCALE NONE	
SHEET NO 1	

GENERAL

1 G-001 TITLE SHEET
2 G-002 INDEX OF DRAWINGS SHEET 1 OF 2
3 G-003 INDEX OF DRAWINGS SHEET 2 OF 2
4 G-004 KEY MAP
5 G-005 ABBREVIATIONS AND SYMBOLS SHEET 1 OF 4
6 G-006 ABBREVIATIONS AND SYMBOLS SHEET 2 OF 4
7 G-007 ABBREVIATIONS AND SYMBOLS SHEET 3 OF 4
8 G-008 ABBREVIATIONS AND SYMBOLS SHEET 4 OF 4
9 R-001 NOT INCLUDED IN THIS SET
10 R-002 NOT INCLUDED IN THIS SET
11 R-003 NOT INCLUDED IN THIS SET
12 R-004 NOT INCLUDED IN THIS SET
13 R-005 NOT INCLUDED IN THIS SET
14 R-006 NOT INCLUDED IN THIS SET
15 R-007 NOT INCLUDED IN THIS SET
16 R-008 NOT INCLUDED IN THIS SET
17 R-009 NOT INCLUDED IN THIS SET
18 R-010 NOT INCLUDED IN THIS SET
19 R-011 NOT INCLUDED IN THIS SET
20 R-012 NOT INCLUDED IN THIS SET
21 R-013 NOT INCLUDED IN THIS SET
22 R-014 NOT INCLUDED IN THIS SET
23 R-015 NOT INCLUDED IN THIS SET
24 R-016 NOT INCLUDED IN THIS SET
25 R-017 NOT INCLUDED IN THIS SET
26 R-018 NOT INCLUDED IN THIS SET
27 R-019 NOT INCLUDED IN THIS SET
28 R-020 NOT INCLUDED IN THIS SET
29 R-021 NOT INCLUDED IN THIS SET
30 R-022 NOT INCLUDED IN THIS SET
31 R-023 NOT INCLUDED IN THIS SET
32 R-024 NOT INCLUDED IN THIS SET
33 R-025 NOT INCLUDED IN THIS SET
34 R-026 NOT INCLUDED IN THIS SET
35 R-027 NOT INCLUDED IN THIS SET
36 R-028 NOT INCLUDED IN THIS SET
37 R-029 NOT INCLUDED IN THIS SET
38 R-030 NOT INCLUDED IN THIS SET
39 R-031 NOT INCLUDED IN THIS SET
40 R-032 NOT INCLUDED IN THIS SET
41 R-033 NOT INCLUDED IN THIS SET
42 R-034 NOT INCLUDED IN THIS SET
43 R-035 NOT INCLUDED IN THIS SET
44 R-036 NOT INCLUDED IN THIS SET
45 R-037 NOT INCLUDED IN THIS SET
46 R-038 NOT INCLUDED IN THIS SET
47 R-039 NOT INCLUDED IN THIS SET
48 R-040 NOT INCLUDED IN THIS SET
49 R-041 NOT INCLUDED IN THIS SET
50 R-042 NOT INCLUDED IN THIS SET
51 R-043 NOT INCLUDED IN THIS SET
52 R-044 NOT INCLUDED IN THIS SET
53 R-045 NOT INCLUDED IN THIS SET
54 R-046 NOT INCLUDED IN THIS SET
55 P-001 PROPOSED RIGHT OF WAY PLAN - STA 7+55 TO STA 13+00
56 P-002 PROPOSED RIGHT OF WAY PLAN - STA 13+00 TO STA 22+00
57 P-003 PROPOSED RIGHT OF WAY PLAN - STA 22+00 TO STA 32+00
58 P-004 PROPOSED RIGHT OF WAY PLAN - STA 32+00 TO STA 42+00
59 P-005 PROPOSED RIGHT OF WAY PLAN - STA 42+00 TO STA 52+00
60 P-006 PROPOSED RIGHT OF WAY PLAN - STA 52+00 TO STA 62+00
61 P-007 PROPOSED RIGHT OF WAY PLAN - STA 62+00 TO STA 72+00
62 P-008 PROPOSED RIGHT OF WAY PLAN - STA 72+00 TO STA 82+00
63 P-009 PROPOSED RIGHT OF WAY PLAN - STA 82+00 TO STA 92+00
64 P-010 PROPOSED RIGHT OF WAY PLAN - STA 92+00 TO STA 102+00
65 P-011 PROPOSED RIGHT OF WAY PLAN - STA 102+00 TO STA 112+00
66 P-012 PROPOSED RIGHT OF WAY PLAN - STA 112+00 TO STA 122+00
67 P-013 PROPOSED RIGHT OF WAY PLAN - STA 122+00 TO STA 132+00
68 P-014 PROPOSED RIGHT OF WAY PLAN - STA 132+00 TO STA 142+00
69 P-015 PROPOSED RIGHT OF WAY PLAN - STA 142+00 TO STA 152+00
70 P-016 PROPOSED RIGHT OF WAY PLAN - STA 152+00 TO STA 162+00
71 P-017 PROPOSED RIGHT OF WAY PLAN - STA 162+00 TO STA 172+00
72 P-018 PROPOSED RIGHT OF WAY PLAN - STA 172+00 TO STA 182+00
73 P-019 PROPOSED RIGHT OF WAY PLAN - STA 182+00 TO STA 192+00
74 P-020 PROPOSED RIGHT OF WAY PLAN - STA 192+00 TO STA 202+00
75 P-021 PROPOSED RIGHT OF WAY PLAN - STA 202+00 TO STA 212+00
76 P-022 PROPOSED RIGHT OF WAY PLAN - STA 212+00 TO STA 222+00
77 P-023 PROPOSED RIGHT OF WAY PLAN - STA 222+00 TO STA 232+00
78 P-024 PROPOSED RIGHT OF WAY PLAN - STA 232+00 TO STA 242+00
79 P-025 PROPOSED RIGHT OF WAY PLAN - STA 242+00 TO STA 251+00
80 P-026 PROPOSED RIGHT OF WAY PLAN - STA 251+00 TO STA 262+00
81 P-027 PROPOSED RIGHT OF WAY PLAN - STA 262+00 TO STA 272+00
82 P-028 PROPOSED RIGHT OF WAY PLAN - STA 272+00 TO STA 282+00
83 P-029 PROPOSED RIGHT OF WAY PLAN - STA 282+00 TO STA 292+00
84 P-030 PROPOSED RIGHT OF WAY PLAN - STA 292+00 TO STA 302+00
85 P-031 PROPOSED RIGHT OF WAY PLAN - STA 302+00 TO STA 313+00
86 P-032 PROPOSED RIGHT OF WAY PLAN - STA 313+00 TO STA 324+00

GENERAL

87 P-033 PROPOSED RIGHT OF WAY PLAN - STA 324+00 TO STA 332+00
88 P-034 PROPOSED RIGHT OF WAY PLAN - STA 332+00 TO STA 342+00
89 P-035 PROPOSED RIGHT OF WAY PLAN - STA 342+00 TO STA 352+00
90 P-036 PROPOSED RIGHT OF WAY PLAN - STA 352+00 TO STA 362+00
91 P-037 PROPOSED RIGHT OF WAY PLAN - STA 362+00 TO STA 372+00
92 P-038 PROPOSED RIGHT OF WAY PLAN - STA 372+00 TO STA 382+00
93 P-039 PROPOSED RIGHT OF WAY PLAN - STA 382+00 TO STA 392+00
94 P-040 PROPOSED RIGHT OF WAY PLAN - STA 392+00 TO STA 401+00
95 P-041 PROPOSED RIGHT OF WAY PLAN - STA 401+00 TO STA 412+00
96 P-042 PROPOSED RIGHT OF WAY PLAN - STA 412+00 TO STA 422+00
97 P-043 PROPOSED RIGHT OF WAY PLAN - STA 422+00 TO STA 432+00
98 P-044 PROPOSED RIGHT OF WAY PLAN - STA 432+00 TO STA 442+00
99 P-045 PROPOSED RIGHT OF WAY PLAN - STA 442+00 TO 450+00
100 NOT INCLUDED IN THIS SET
101 P-322 PROPOSED RIGHT OF WAY PLAN - CENTINELA OPTION 3 STA 212+00 TO STA 222+00
102 P-323 PROPOSED RIGHT OF WAY PLAN - CENTINELA OPTION 3 STA 222+00 TO STA 232+00
103 P-324 PROPOSED RIGHT OF WAY PLAN - CENTINELA OPTION 3 STA 232+00 TO STA 242+00
104 P-536 PROPOSED RIGHT OF WAY PLAN - VERNON OPTION 5 STA 352+00 TO STA 362+00
105 P-537 PROPOSED RIGHT OF WAY PLAN - VERNON OPTION 5 STA 362+00 TO STA 372+00
106 P-538 PROPOSED RIGHT OF WAY PLAN - VERNON OPTION 5 STA 372+00 TO STA 382+00
107 P-539 PROPOSED RIGHT OF WAY PLAN - VERNON OPTION 5 STA 382+00 TO STA 392+00
108 P-540 PROPOSED RIGHT OF WAY PLAN - VERNON OPTION 5 STA 392+00 TO STA 402+00
109 P-642E NOT INCLUDED IN THIS SET
110 P-643E NOT INCLUDED IN THIS SET
111 P-644E NOT INCLUDED IN THIS SET
112 P-645E NOT INCLUDED IN THIS SET
113 P-646E NOT INCLUDED IN THIS SET
114 P-642W NOT INCLUDED IN THIS SET
115 P-643W NOT INCLUDED IN THIS SET
116 P-644W NOT INCLUDED IN THIS SET
117 P-645W NOT INCLUDED IN THIS SET
118 P-646W NOT INCLUDED IN THIS SET
119 R-201 NOT INCLUDED IN THIS SET
120 R-202 NOT INCLUDED IN THIS SET
121 R-203 NOT INCLUDED IN THIS SET
122 R-204 NOT INCLUDED IN THIS SET
123 R-205 NOT INCLUDED IN THIS SET
124 R-206 NOT INCLUDED IN THIS SET
125 R-207 NOT INCLUDED IN THIS SET

CONTROL SURVEYS

126 CS-001 NOT INCLUDED IN THIS SET
127 CS-002 NOT INCLUDED IN THIS SET
128 CS-003 NOT INCLUDED IN THIS SET
129 CS-004 NOT INCLUDED IN THIS SET
130 CS-005 NOT INCLUDED IN THIS SET

CIVIL

131 C-001 PLAN AND PROFILE - STA 7+56 TO STA 13+00
132 C-001a PLAN AND PROFILE - STA 7+55 TO STA 13+00
133 C-002 PLAN AND PROFILE - STA 13+00 TO STA 22+00
134 C-003 PLAN AND PROFILE - STA 22+00 TO STA 32+00
135 C-004 PLAN AND PROFILE - STA 32+00 TO STA 42+00
136 C-005 PLAN AND PROFILE - STA 42+00 TO STA 52+00
137 C-006 PLAN AND PROFILE - STA 52+00 TO STA 62+00
138 C-007 PLAN AND PROFILE - STA 62+00 TO STA 73+00
139 C-008 PLAN AND PROFILE - STA 73+00 TO STA 82+00
140 C-009 PLAN AND PROFILE - STA 82+00 TO STA 92+00
141 C-010 PLAN AND PROFILE - STA 92+00 TO STA 102+00
142 C-011 PLAN AND PROFILE - STA 102+00 TO STA 112+00
143 C-012 PLAN AND PROFILE - STA 112+00 TO STA 122+00
144 C-013 PLAN AND PROFILE - STA 122+00 TO STA 131+00
145 C-014 PLAN AND PROFILE - STA 131+00 TO STA 141+00
146 C-015 PLAN AND PROFILE - STA 142+00 TO STA 152+00
147 C-016 PLAN AND PROFILE - STA 152+00 TO STA 162+00
148 C-017 PLAN AND PROFILE - STA 162+00 TO STA 172+00
149 C-018 PLAN AND PROFILE - STA 172+00 TO STA 182+00
150 C-019 PLAN AND PROFILE - STA 182+00 TO STA 192+00
151 C-020 PLAN AND PROFILE - STA 192+00 TO STA 203+00
152 C-021 PLAN AND PROFILE - STA 203+00 TO STA 212+00
153 C-022 PLAN AND PROFILE - STA 212+00 TO STA 222+00
154 C-023 PLAN AND PROFILE - STA 222+00 TO STA 232+00
155 C-024 PLAN AND PROFILE - STA 232+00 TO STA 242+00
156 C-025 PLAN AND PROFILE - STA 242+00 TO STA 251+00
157 C-026 PLAN AND PROFILE - STA 251+00 TO STA 262+00
158 C-027 PLAN AND PROFILE - STA 262+00 TO STA 272+00
159 C-028 PLAN AND PROFILE - STA 272+00 TO STA 282+00
160 C-029 PLAN AND PROFILE - STA 282+00 TO STA 292+00
161 C-030 PLAN AND PROFILE - STA 292+00 TO STA 302+00
162 C-031 PLAN AND PROFILE - STA 302+00 TO STA 313+00
163 C-032 PLAN AND PROFILE - STA 313+00 TO STA 324+00
164 C-033 PLAN AND PROFILE - STA 324+00 TO STA 332+00
165 C-034 PLAN AND PROFILE - STA 332+00 TO STA 342+00

CIVIL

166 C-035 PLAN AND PROFILE - STA 342+00 TO STA 352+00
167 C-036 PLAN AND PROFILE - STA 352+00 TO STA 362+00
168 C-037 PLAN AND PROFILE - STA 362+00 TO STA 372+00
169 C-038 PLAN AND PROFILE - STA 372+00 TO STA 382+00
170 C-039 PLAN AND PROFILE - STA 382+00 TO STA 392+00
171 C-040 PLAN AND PROFILE - STA 392+00 TO STA 401+00
172 C-041 PLAN AND PROFILE - STA 401+00 TO STA 412+00
173 C-042 PLAN AND PROFILE - STA 412+00 TO STA 422+00
174 C-043 PLAN AND PROFILE - STA 422+00 TO STA 432+00
175 C-044 PLAN AND PROFILE - STA 432+00 TO STA 442+00
176 C-045 PLAN AND PROFILE - STA 442+00 TO STA 449+00
177 C-046 NOT INCLUDED IN THIS SET
178 C-047 GEOMETRY TABLE - SHEET 1 OF 5 SOUTHBOUND LRT
179 C-048 GEOMETRY TABLE - SHEET 2 OF 5 SOUTHBOUND LRT & TR3
180 C-049 GEOMETRY TABLE - SHEET 3 OF 5 NORTHBOUND LRT
181 C-050 GEOMETRY TABLE - SHEET 4 OF 5 NORTHBOUND LRT
182 C-051 GEOMETRY TABLE - SHEET 5 OF 5 BNSF & WYE
183 C-322 PLAN AND PROFILE - CENTINELA OPTION 3 STA 212+00 TO STA 222+00
184 C-323 PLAN AND PROFILE - CENTINELA OPTION 3 STA 222+00 TO STA 232+00
185 C-324 PLAN AND PROFILE - CENTINELA OPTION 3 STA 232+00 TO STA 242+00
186 C-325 GEOMETRY TABLE - CENTINELA (OPTION 3)
187 C-536 PLAN AND PROFILE - VERNON OPTION 5 STA 352+00 TO STA 362+00
188 C-537 PLAN AND PROFILE - VERNON OPTION 5 STA 362+00 TO STA 372+00
189 C-538 PLAN AND PROFILE - VERNON OPTION 5 STA 372+00 TO STA 382+00
190 C-539 PLAN AND PROFILE - VERNON OPTION 5 STA 382+00 TO STA 392+00
191 C-540 PLAN AND PROFILE - VERNON OPTION 5 STA 392+00 TO STA 402+00
192 C-541 GEOMETRY TABLE - VERNON (OPTION 5)
193 C-642E NOT INCLUDED IN THIS SET
194 C-643E NOT INCLUDED IN THIS SET
195 C-644E NOT INCLUDED IN THIS SET
196 C-645E NOT INCLUDED IN THIS SET
197 C-646E NOT INCLUDED IN THIS SET
198 C-647E NOT INCLUDED IN THIS SET
199 C-642W NOT INCLUDED IN THIS SET
200 C-643W NOT INCLUDED IN THIS SET
201 C-644W NOT INCLUDED IN THIS SET
202 C-645W NOT INCLUDED IN THIS SET
203 C-646W NOT INCLUDED IN THIS SET
204 C-647W NOT INCLUDED IN THIS SET
205 C-500 TYPICAL CROSS SECTIONS - SHEET 1 OF 15
206 C-501 TYPICAL CROSS SECTIONS - SHEET 2 OF 15
207 C-502 TYPICAL CROSS SECTIONS - SHEET 3 OF 15
208 C-503 TYPICAL CROSS SECTIONS - SHEET 4 OF 15
209 C-504 TYPICAL CROSS SECTIONS - SHEET 5 OF 15
210 C-505 TYPICAL CROSS SECTIONS - SHEET 6 OF 15
211 C-506 TYPICAL CROSS SECTIONS - SHEET 7 OF 15
212 C-507 TYPICAL CROSS SECTIONS - SHEET 8 OF 15
213 C-508 TYPICAL CROSS SECTIONS - SHEET 9 OF 15
214 C-509 TYPICAL CROSS SECTIONS - SHEET 10 OF 15
215 C-510 TYPICAL CROSS SECTIONS - SHEET 11 OF 15
216 C-511 NOT INCLUDED IN THIS SET
217 C-512 TYPICAL CROSS SECTIONS - SHEET 13 OF 15
218 C-513 TYPICAL CROSS SECTIONS - SHEET 14 OF 15
219 C-514 TYPICAL CROSS SECTIONS - SHEET 15 OF 15
219A C-515 CRENSHAW BLVD AND EXPOSITION WAY PROPOSED CLOSURE

UTILITIES

220 U-001 NOT INCLUDED IN THIS SET
221 U-002 NOT INCLUDED IN THIS SET
222 U-003 NOT INCLUDED IN THIS SET
223 U-004 NOT INCLUDED IN THIS SET
224 U-005 NOT INCLUDED IN THIS SET
225 U-006 NOT INCLUDED IN THIS SET
226 U-007 NOT INCLUDED IN THIS SET
227 U-008 NOT INCLUDED IN THIS SET
228 U-009 NOT INCLUDED IN THIS SET
229 U-010 NOT INCLUDED IN THIS SET
230 U-011 NOT INCLUDED IN THIS SET
231 U-012 NOT INCLUDED IN THIS SET
232 U-013 NOT INCLUDED IN THIS SET
233 U-014 NOT INCLUDED IN THIS SET
234 U-015 NOT INCLUDED IN THIS SET
235 U-016 NOT INCLUDED IN THIS SET
236 U-017 NOT INCLUDED IN THIS SET
237 U-018 NOT INCLUDED IN THIS SET
238 U-019 NOT INCLUDED IN THIS SET
239 U-020 NOT INCLUDED IN THIS SET
240 U-021 NOT INCLUDED IN THIS SET
241 U-022 NOT INCLUDED IN THIS SET
242 U-023 NOT INCLUDED IN THIS SET
243 U-024 NOT INCLUDED IN THIS SET
244 U-025 NOT INCLUDED IN THIS SET
245 U-026 NOT INCLUDED IN THIS SET
246 U-027 NOT INCLUDED IN THIS SET
247 U-028 NOT INCLUDED IN THIS SET
248 U-029 NOT INCLUDED IN THIS SET
249 U-030 NOT INCLUDED IN THIS SET

C:\velis-feir\General\CL0002.plg

8/19/2011

9:34:46 AM

USER=SOL57960

Pentable-MT A.TBL

Plot Driver = pdf_11x17_rev1.plt

Table with 7 columns: REV, DATE, BY, APP, REG NO, EXPIRES, SEAL HOLDER, DESCRIPTION. Contains revision history information.

Table with 2 columns: Field Name, Value. Includes: DESIGNED BY (A. GIBBONS), DRAWN BY (C. NATHAN), CHECKED BY (L. ABRAMSON), IN CHARGE (G. HEAD), DATE (08-15-11).

FOR REVIEW ONLY NOT FOR CONSTRUCTION
LEE W ABRAMSON
C44285

Metro logo and Hatch Mott MacDonald logo with contact information: 6151 W. Century Blvd. Suite 800, Los Angeles, CA 90045, Phone: 310-337-0500, Fax: 310-337-0042.

LOS ANGELES COUNTY METROPOLITAN TRANSPORTATION AUTHORITY

CRENSHAW/LAX TRANSIT CORRIDOR PROJECT
INDEX OF DRAWINGS SHEET 1 OF 2

Table with 2 columns: Field Name, Value. Includes: CONTRACT NO (E0117), DRAWING NO (G-002), SCALE (NONE), SHEET NO (2).

UTILITIES

250 U-031 NOT INCLUDED IN THIS SET
 251 U-032 NOT INCLUDED IN THIS SET
 252 U-033 NOT INCLUDED IN THIS SET
 253 U-034 NOT INCLUDED IN THIS SET
 254 U-035 NOT INCLUDED IN THIS SET
 255 U-036 NOT INCLUDED IN THIS SET
 256 U-037 NOT INCLUDED IN THIS SET
 257 U-038 NOT INCLUDED IN THIS SET
 258 U-039 NOT INCLUDED IN THIS SET
 259 U-040 NOT INCLUDED IN THIS SET
 260 U-041 NOT INCLUDED IN THIS SET
 261 U-042 NOT INCLUDED IN THIS SET
 262 U-043 NOT INCLUDED IN THIS SET
 263 U-044 NOT INCLUDED IN THIS SET
 264 U-045 NOT INCLUDED IN THIS SET
 265 U-046 NOT INCLUDED IN THIS SET

STRUCTURAL

266 S-105 STRUCTURAL PLANS - INTERSTATE 105 UNDERCROSSING
 267 S-405 STRUCTURAL PLANS - INTERSTATE 405 OVERCROSSING

ARCHITECTURE

268 A-101 AVIATION/CENTURY AERIAL STATION - SITE PLAN
 269 A-102 AVIATION/CENTURY AERIAL STATION - PLATFORM LEVEL
 270 A-103 AVIATION/CENTURY AERIAL STATION - SECTIONS
 271 A-311 FLORENCE/LA BREA AT GRADE STATION - SITE PLAN
 272 A-312 FLORENCE/LA BREA AT GRADE STATION - PLATFORM ELEVATION
 273 A-313 FLORENCE/LA BREA AT GRADE STATION - SECTIONS
 274 A-401 FLORENCE/WEST AT GRADE STATION - SITE PLAN
 275 A-402 FLORENCE/WEST AT GRADE STATION - SECTIONS AND ELEVATIONS
 276 A-501 CRENSHAW/SLAUSON AT GRADE STATION - SITE PLAN
 277 A-502 CRENSHAW/SLAUSON AT GRADE STATION - SECTIONS AND ELEVATIONS
 278 A-601 CRENSHAW/VERNON OPEN CUT STATION - STREET LEVEL
 279 A-602 CRENSHAW/VERNON OPEN CUT STATION - MEZZANINE LEVEL
 280 A-603 CRENSHAW/VERNON OPEN CUT STATION - PLATFORM LEVEL
 281 A-604 CRENSHAW/VERNON OPEN CUT STATION - SECTIONS
 A-701 NOT INCLUDED IN THIS SET
 A-702 NOT INCLUDED IN THIS SET
 A-703 NOT INCLUDED IN THIS SET
 A-704 NOT INCLUDED IN THIS SET
 282 A-711 CRENSHAW/MLK STATION - STREET LEVEL
 283 A-712 CRENSHAW/MLK STATION - MEZZANINE LEVEL
 284 A-713 CRENSHAW/MLK STATION - PLATFORM LEVEL
 285 A-714 CRENSHAW/MLK STATION - SECTIONS
 A-801 NOT INCLUDED IN THIS SET
 A-802 NOT INCLUDED IN THIS SET
 A-811 NOT INCLUDED IN THIS SET
 A-812 NOT INCLUDED IN THIS SET
 A-813 NOT INCLUDED IN THIS SET
 A-814 NOT INCLUDED IN THIS SET
 A-821 NOT INCLUDED IN THIS SET
 A-822 NOT INCLUDED IN THIS SET
 A-823 NOT INCLUDED IN THIS SET
 A-824 NOT INCLUDED IN THIS SET
 286 A-830 CRENSHAW/EXPOSITION - SITE PLAN
 287 A-831 CRENSHAW/EXPOSITION - STREET LEVEL
 288 A-832 CRENSHAW/EXPOSITION - MEZZANINE LEVEL
 289 A-833 CRENSHAW/EXPOSITION - PLATFORM PLAN
 290 A-834 CRENSHAW/EXPOSITION - SECTIONS

SIGNAL AND COMMUNICATIONS

291 TC-001 NOT INCLUDED IN THIS SET
 292 TC-002 NOT INCLUDED IN THIS SET
 293 TC-003 NOT INCLUDED IN THIS SET
 294 COM-001 NOT INCLUDED IN THIS SET

TRACTION POWER

295 TP-001 NOT INCLUDED IN THIS SET
 296 TP-002 NOT INCLUDED IN THIS SET
 297 TP-003 NOT INCLUDED IN THIS SET
 298 TP-004 NOT INCLUDED IN THIS SET
 299 TP-005 NOT INCLUDED IN THIS SET
 300 TP-006 NOT INCLUDED IN THIS SET
 301 TP-007 NOT INCLUDED IN THIS SET
 302 TP-008 NOT INCLUDED IN THIS SET
 303 TP-009 NOT INCLUDED IN THIS SET
 304 TP-010 NOT INCLUDED IN THIS SET

TRACTION POWER

306 TP-012 NOT INCLUDED IN THIS SET
 307 TP-013 NOT INCLUDED IN THIS SET
 308 TP-014 NOT INCLUDED IN THIS SET

OVERHEAD CONTACT SYSTEMS

309 OCS-001 NOT INCLUDED IN THIS SET
 310 OCS-002 NOT INCLUDED IN THIS SET
 311 OCS-003 NOT INCLUDED IN THIS SET
 312 OCS-004 NOT INCLUDED IN THIS SET
 313 OCS-005 NOT INCLUDED IN THIS SET

MAINTENANCE FACILITIES

314 SP-101 SOUTHWESTERN YARD SITE PLAN
 315 P-100 PROPOSED RIGHT OF PLAN, SHEET 1 OF 2
 316 P-101 PROPOSED RIGHT OF PLAN, SHEET 2 OF 2

\$FILE\$ \$DATE\$ \$TIME\$ \$USERS\$ \$PENTIBL\$ \$PLTDRV\$
 Pentable=\$PENTIBL\$ \$PLTDRV\$

THE PREPARATION OF THIS DRAWING HAS BEEN FINANCED IN PART THROUGH A GRANT FROM THE U.S. DEPARTMENT OF TRANSPORTATION, FEDERAL TRANSIT ADMINISTRATION (FTA), UNDER THE FEDERAL TRANSIT ACT OF 1964, AS AMENDED, AND IN PART BY THE TAXES OF THE CITIZENS OF LOS ANGELES COUNTY AND OF THE STATE OF CALIFORNIA.							
REV	DATE	BY	APP	REG NO	EXPIRES	SEAL HOLDER	DESCRIPTION

DESIGNED BY A. GIBBONS
DRAWN BY C. NATHAN
CHECKED BY L. ABRAMSON
IN CHARGE G. HEAD
DATE 08-15-11

FOR REVIEW ONLY NOT FOR CONSTRUCTION
 LEE W ABRAMSON
 C44285



Metro



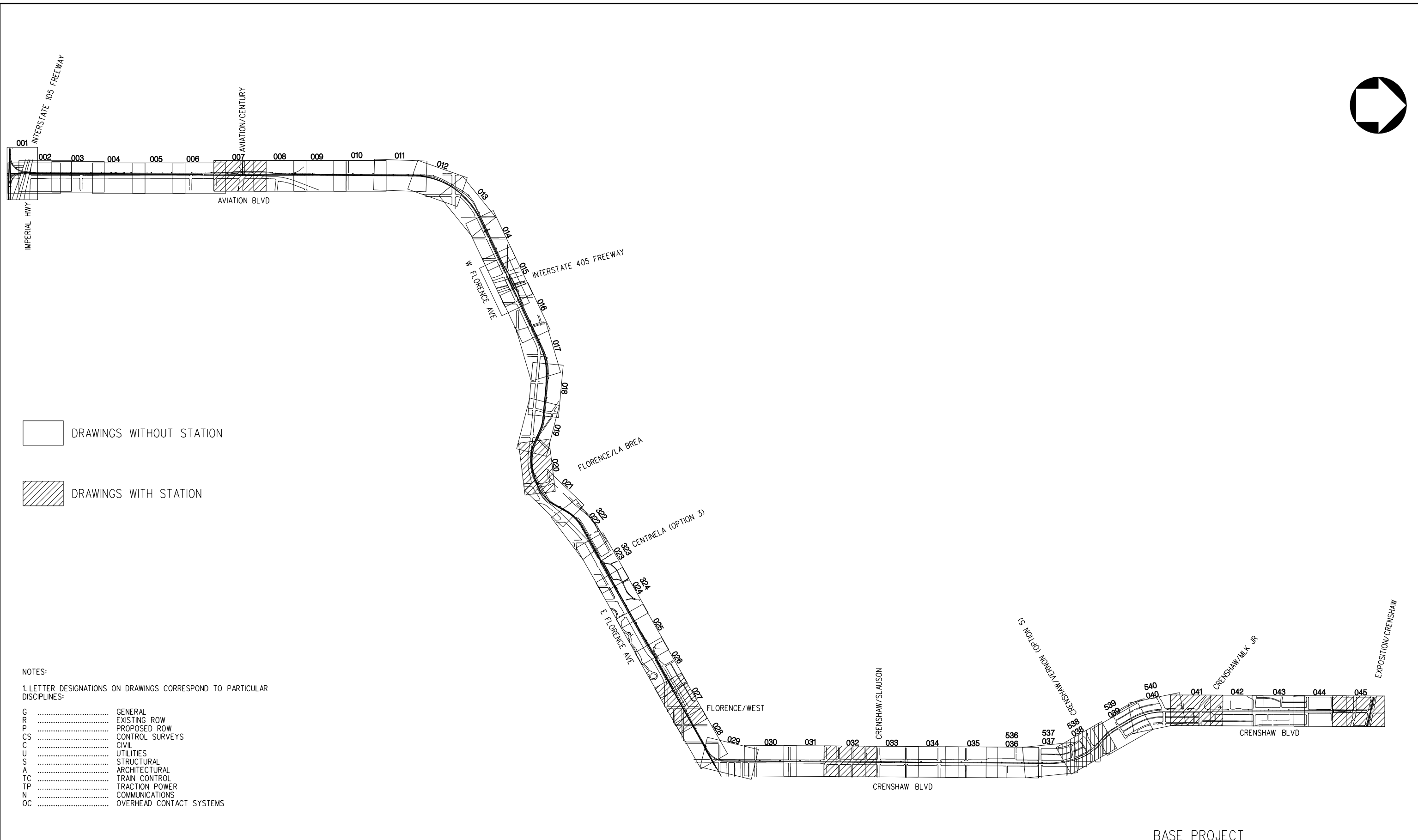
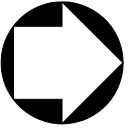
Hatch Mott MacDonald



6151 W. Century Blvd.
 Suite 800
 Los Angeles, CA 90045
 Phone: 310-337-0500
 Fax: 310-337-0042

LOS ANGELES COUNTY METROPOLITAN TRANSPORTATION AUTHORITY

CRENSHAW/LAX TRANSIT CORRIDOR PROJECT
 INDEX OF DRAWINGS
 SHEET 2 OF 2

CONTRACT NO E0117	
DRAWING NO G-003	REV
SCALE NONE	
SHEET NO 3	



 DRAWINGS WITHOUT STATION
 DRAWINGS WITH STATION

- NOTES:
1. LETTER DESIGNATIONS ON DRAWINGS CORRESPOND TO PARTICULAR DISCIPLINES:
- G GENERAL
 - ER EXISTING ROW
 - PR PROPOSED ROW
 - CS CONTROL SURVEYS
 - C CIVIL
 - U UTILITIES
 - S STRUCTURAL
 - A ARCHITECTURAL
 - TC TRAIN CONTROL
 - TP TRACTION POWER
 - N COMMUNICATIONS
 - OC OVERHEAD CONTACT SYSTEMS

c:\pwworking\hmm\gib54384\dms02789\CLG004.plg
 USER=CIB54384 12/8/2010 4:59:08 PM
 Pentable=MTA.TBL
 Plot Driver=pdf_11x17_rev1.plt

REV	DATE	BY	APP	REG NO	EXPIRES	SEAL HOLDER	DESCRIPTION

DESIGNED BY
A. GIBBONS
 DRAWN BY
A. GIBBONS
 CHECKED BY
DON DALI
 IN CHARGE
G. HEAD
 DATE
12-10-10

FOR REVIEW
ONLY NOT FOR
CONSTRUCTION
LEE W ABRAMSON
C44285


**LOS ANGELES COUNTY METROPOLITAN
TRANSPORTATION AUTHORITY**

 6151 W. Century Blvd.
Suite 800
Los Angeles, CA 90045
Phone: 310-337-0500
Fax: 310-337-0042

BASE PROJECT
**CRENSHAW/LAX
TRANSIT CORRIDOR PROJECT**
 KEY MAP

CONTRACT NO	E0117
DRAWING NO	G-004
SCALE	NONE
SHEET NO	4

REV	0
-----	---

ABBREVIATIONS

TRACK ALIGNMENT – HORIZONTAL

BC	BEGINNING OF CURVE
CS	CIRCULAR CURVE TO SPIRAL
PC	POINT OF CIRCULAR CURVE
PI	POINT OF INTERSECTION OF TWO TANGENTS
PT	POINT OF TANGENCY
TS	TANGENT TO SPIRAL
SC	SPIRAL TO CIRCULAR CURVE
SS	SPIRAL TO SPIRAL
ST	SPIRAL TO TANGENT OR SHORT TANGENT
CC	CENTER OF CIRCULAR CURVE
LC	LONG CHORD
DC	DEGREE OF CURVE
Δc	CENTRAL ANGLE OF CIRCULAR CURVE
Es	EXTERNAL DISTANCE
I	TOTAL INTERSECTION ANGLE
K	DISTANCE FROM TS TO PC ALONG TANGENT
L	TOTAL LENGTH OF CURVE
Lc	TOTAL LENGTH OF CIRCULAR CURVE
Ls	TOTAL LENGTH OF SPIRAL
Ls1	LENGTH OF SPIRAL IN
Ls2	LENGTH OF SPIRAL OUT
LT	LONG TANGENT
P	OFFSET DISTANCE FROM TANGENT TO PC, SPIRAL THROW
POS	POINT ON SPIRAL
POT	POINT ON TANGENT
POC	POINT OF CURVATURE
Rc	RADIUS OF CIRCULAR CURVE
Tc	TANGENT LENGTH OF CIRCULAR CURVE
Ts	TANGENT DISTANCE FROM TS OR ST TO P1
θs	SPIRAL ANGLE
X	TANGENT DISTANCE FROM TS TO SC OR ST TO CS
Y	TANGENT OFFSET TO SC OR CS
E+	TOTAL SUPERELEVATION
Eo	ACTUAL SUPERELEVATION
Eu	UNBALANCED SUPERELEVATION
PS	POINT OF SWITCH
PITO	POINT OF INTERSECTION OF TURNOUT
PRC	POINT OF REVERSE CIRCULAR CURVE

TRACK ALIGNMENT – VERTICAL

VC	VERTICAL CURVE
PVC	POINT OF VERTICAL CURVE
PVI	POINT OF VERTICAL INTERSECTION
PVT	POINT OF VERTICAL TANGENCY
POVC	POINT ON VERTICAL CURVE
LVC	LENGTH OF VERTICAL CURVE
MO	MIDDLE ORDINATE

UTILITY COMPANY /AGENCY ABBREVIATIONS

AAR	AMERICAN ASSOCIATION OF RAILROADS
AASHTO	AMERICAN ASSOCIATION OF STATE HIGHWAY AND TRANSPORTATION OFFICIALS
ACI	AMERICAN CONCRETE INSTITUTE
AF	U.S. AIR FORCE
AM STATE	W. AMERICAN STATES WATER COMPANY (NOW LACOW)
ARCO	ATLANTIC RICHFIELD COMPANY (NOW FOUR CORNERS PIPELINE COMPANY)
AREMA	AMERICAN RAILWAY ENGINEERING & MAINTENANCE OF WAY ASSOCIATION
ASCE	AMERICAN SOCIETY OF CIVIL ENGINEERS
ASTM	AMERICAN SOCIETY FOR TESTING AND MATERIALS
BNSF	BURLINGTON NORTHERN SANTA FE RAILROAD
BPL	BUREAU OF POWER AND LIGHT (NOW DWPPS)
BWS	BUREAU OF WATER SUPPLIES (NOW DWPPS)
CALTRANS	STATE OF CALIFORNIA DEPARTMENT OF TRANSPORTATION
CON WCO	CONSERVATIVE WATER COMPANY (NOW LACOW)
DWP	LOS ANGELES DEPARTMENT OF WATER AND POWER
DWPWS	CITY OF LOS ANGELES, DEPARTMENT OF WATER AND POWER, WATER SYSTEM
DWPPS	CITY OF LOS ANGELES, DEPARTMENT OF WATER AND POWER, POWER SYSTEM
FHWA	FEDERAL HIGHWAY ADMINISTRATION
FTA	FEDERAL TRANSPORTATION ADMINISTRATION
GP	GENERAL PETROLEUM (NOW MOBIL OIL)
GSD	CITY OF LOS ANGELES, GENERAL SERVICES DIVISION
GTE	GENERAL TELEPHONE COMPANY
LA	CITY OF LOS ANGELES
LABOE	LOS ANGELES BUREAU OF ENGINEERING
LACDPW	LOS ANGELES COUNTY DEPARTMENT OF PUBLIC WORKS
LACFCD	LOS ANGELES COUNTY FLOOD CONTROL DISTRICT

LACMTA	LOS ANGELES COUNTY METROPOLITAN TRANSPORTATION AUTHORITY
LACO	COUNTY OF LOS ANGELES
LACOW	LOS ANGELES COUNTY WATER WORKS
LACSD	LOS ANGELES COUNTY SANITATION DISTRICTS
LACTC	LOS ANGELES COUNTY TRANSPORTATION COMMISSION (NOW LACMTA)
LADOT	CITY OF LOS ANGELES, DEPARTMENT OF TRANSPORTATION
LADPW	LOS ANGELES CITY, DEPARTMENT OF PUBLIC WORKS
LADWP-PS	CITY OF LOS ANGELES, DEPARTMENT OF WATER & POWER, POWER SYSTEMS
LADWP-WS	CITY OF LOS ANGELES, DEPARTMENT OF WATER & POWER, WATER SYSTEMS
LAG	LOS ANGELES GAS (NOW SCG OR TGC)
LAG&E	LOS ANGELES GAS & ELECTRIC (NOW SCG, TGC AND DWPPS)
LAPBL	LOS ANGELES TO PASADENA METRO GOLD LINE CONSTRUCTION AUTHORITY
LAWD	LOS ANGELES WATER DEPARTMENT (NOW DWPPS)
LAX	LOS ANGELES INTERNATIONAL AIRPORT
LB	CITY OF LONG BEACH
MTA	LOS ANGELES METROPOLITAN TRANSPORTATION AUTHORITY
MWD	METROPOLITAN WATER DISTRICT OF SOUTHERN CALIFORNIA
PAS	CITY OF PASADENA
PACTEL, PTT	PACIFIC TELEPHONE & TELEGRAPH COMPANY
PUC	PUBLIC UTILITY COMMISSION
RCC	RAIL CONSTRUCTION CORPORATION
SBC	SOUTHERN BELL COMPANY (KNOWN AS AT&T)
SCE	SOUTHERN CALIFORNIA EDISON COMPANY
SCAL W	SOUTHERN CALIFORNIA WATER COMPANY (NOW LACOW)
SCG	SOUTHERN CALIFORNIA GAS COMPANY(NOW THE GAS COMPANY)
SCRTD	SOUTHERN CALIFORNIA RAPID TRANSIT DISTRICT (NOW LACMTA)
SCT	SOUTHERN CALIFORNIA TELEPHONE COMPANY (NOW PACIFIC BELL)
SCWCO	SOUTHERN CALIFORNIA WATER COMPANY
SO PAC P	SOUTHERN PACIFIC PIPELINE COMPANY
SPTC OR SP	SOUTHERN PACIFIC TRANSPORTATION COMPANY
SO PAS	CITY OF SOUTH PASADENA
SPWPC	STANDARD PLANS FOR PUBLIC WORKS CONSTRUCTION
SSPWC	STANDARD SPECIFICATIONS FOR PUBLIC WORKS CONSTRUCTION
STD OIL CO	STANDARD OIL COMPANY OF CALIFORNIA
TGC	THE GAS COMPANY(FORMERLY SOUTHERN CALIFORNIA GAS COMPANY)
UBC	UNIFORM BUILDING CODE
US	UNITED STATES
USC & GS	UNITED STATES COAST AND GEODETIC SURVEY
WILTEL	WILLIAMS TELEPHONE CO.
WUT	WESTERN UNION TELEGRAPH COMPANY(NOW AT&T PART OF MCI)

MISCELLANEOUS

&	AND
@	AT
APPROX. APP	APPROXIMATE OR APPROXIMATELY
AB	AGGREGATE BASE
ABND	ABANDONED
ABS	ACRYLONITRILE-BUTADIENE-STYRENE
ABUT	ABUTMENT
AC	ASPHALT CONCRETE OR ASBESTOS CEMENT
ACC	ASPHALT CEMENT CONDUIT
ACD	ASPHALTIC CONCRETE DUCT
ACL	AUXILIARY CONTROL LINE
ACP	ASBESTOS CEMENT PIPE
ACWS	ASPHALT CONCRETE WEARING SURFACE
AGGR	AGGREGATE
AHD	AHEAD
AL	ALUMINUM
ALIGN	ALIGNMENT
APP	APPROVED (REF)
APPROX	APPROXIMATELY
APPV	APPROVED
AS	AGGREGATE SUB-BASE
ASB	ASBESTOS
ASPH	ASPHALT
ASSY	ASSEMBLY
ATC	AUTOMATIC TRAIN CONTROL
AVE	AVENUE
AWG	AMERICAN WIRE GAUGE (GAGE)
A/R	AS REQUIRED
BB	BILLBOARD, BEGIN BRIDGE
BCOP	BARE COPPER
BCR	BEGIN CURB RETURN
BEG	BEGIN OR BEGINNING
BF	BOTTOM FACE
BFP	BACKFLOW PREVENTER
BIT	BITUMINOUS
BK	BACK
BL	BASELINE, BUILDING LINE OR LEFT TRACK-LINE B

BLDG	BUILDING
BLS	BLUE LIGHT STATION
BLVD	BOULEVARD
BM	BENCH MARK
BO	BLOW-OFF
BOC	BOTTOM OF CURB
BOP	BOTTOM OF PIPE
BOS	BOTTOM OF SLOPE
BP	BEGIN PLATFORM
BSMT	BASEMENT
BRDG	BRIDGE
BRG	BEARING
BRK	BRICK
BRS	BLAST RELIEF SHAFT
BS	BELL AND SPIGOT
BUR CA	BURIED CABLE
BW	BOTTOM OF WALL OR BACK OF WALK
B TO B	BACK TO BACK
B-PC	SCHEDULE B - PLASTIC CONDUIT
C	CURB OR CONDUIT
CA	CABLE OR COMPRESSED AIR
CAB	CRUSHED AGGREGATE BASE
CB	CATCH BASIN
CBD	CENTRAL BUSINESS DISTRICT
CC-B	CONCRETE CONDUIT-TYPE B
CC-C	CONCRETE CONDUIT-TYPE C
CD	CURB DRAIN
CE	CONCRETE ENCASED
CF	CURB FACE
CFS	CUBIC FEET PER SECOND
C & G	CURB AND GUTTER
CGS	CENTER OF GRAVITY, STRAND
CHEM	CHEMICAL
CI	CAST IRON OR CURB INLET
CICLP, CIP(CL)	CAST-IRON CEMENT LINED PIPE
CIP	CAST IRON PIPE
CIRCUM	CIRCUMFERENCE
CISP(ES)	CAST IRON SOIL PIPE (EXTRA STRENGTH)
CJ	CONSTRUCTION JOINT, OR CONTROL JOINT
CL	CURB LINE OR CLASS
CL	CENTERLINE
CLF	CHAIN LINK FENCE
CLG	CEILING
CLR	CLEARANCE OR CLEAR
CMB	CRUSHED MISCELLANEOUS BASE
CMP	CORRUGATED METAL PIPE
CMU	CONCRETE MASONRY UNIT
CO	CLEANOUT, COUNTY, OR COMPANY
COL	COLUMN
COLA	CITY OF LOS ANGELES
COM	COMMERCIAL
COMM	COMMUNICATION
CONC	CONCRETE
CONC BL	CONCRETE BLOCK
COND	CONDUIT
CONF	CONFERENCE
CONN	CONNECT, CONNECTION, OR CONNECTOR
CONST	CONSTRUCT OR CONSTRUCTION
CONT	CONTINUED, CONTINUOUS, OR CONTINUATION
COORD	COORDINATE
COP	COPPER
COR	CORNER
CORR	CORRUGATE OR CORRUGATED
CP	CONCRETE PIPE OR CEMENT PIPE
CPC	CORRUGATED PLASTIC CONDUIT
CPP	CORRUGATED PLASTIC PIPE
C/S	COMMUNICATIONS/SIGNALS
CSG	CASING
CSW	CONCRETE SIDEWALK
CTA	CENTRAL TANGENT ANGLE
CTB	CEMENT TREATED BASE
CU FT	CUBIC FOOT
CU IN	CUBIC INCH
CU YD	CUBIC YARD
CULV	CULVERT
CWD	CREOSOTED WOOD DUCT
CWR	CONTINUOUS WELDED RAIL
C TO C	CENTER TO CENTER
C-PC	SCHEDULE C - PLASTIC CONDUIT
D, d	DEPTH
D, DU, DCT	DUCT
DB	DUCT BANK
DCVA	DOUBLE CHECK VALVE ASSEMBLY

DEF	DEFLECTION
DEG	DEGREES
DEP	DEPRESS
DEPT	DEPARTMENT
DESC	DESCRIPTION
DET	DETAIL
DF	DIRECT FIXATION
DG	DIESEL GAS OR DRY GAS
DI	DUCTILE IRON, DROP INLET
DIA OR Ø	DIAMETER
DIAG	DIAGRAM
DIM	DIMENSION
DIP(L)	DUCTILE IRON PIPE (LINED)
DIST	DISTRICT OR DISTANCE
DMD	DIAMOND
DMH	DRAINAGE MANHOLE
DML	DEMOLITION
DN	DOWN
DW	DOMESTIC WATER
DWG	DRAWING
DWL	DOWEL
DWLG	DOWELLING
DWY	DRIVEWAY
E	EAST, ELECTRIC
EA	EACH
EB	EASTBOUND, END OF BRIDGE
EC	END CURVE
ECR	END CURB RETURN
E/E	EAST OF EAST RIGHT-OF-WAY LINE
EF	EACH FACE
EG	EDGE OF GUTTER
EHH	ELECTRICAL HANDHOLE
EL	ELEVATION
ELEC	ELECTRIC OR ELECTRICAL
ELECT	ELECTRIC (REF)
ELEV	ELEVATOR OR ELEVATION
EMB	EMBANKMENT
EMH	ELECTRICAL MANHOLE
E/O	EAST OF
EOR	END OF ROAD
EP	EDGE OF PAVEMENT OR END PLATFORM
EO	EQUAL, EQUATION OR EQUALITY
ES	EXTRA STRENGTH
ET	END TRACK
ETC	ET CETERA
ETS	EMERGENCY TRIP STATION
EW	EACH WAY
E/W	EAST OF WEST RIGHT-OF-WAY LINE
EX OR EXIST	EXISTING
EXP	EXPANSION
EXT	EXTERIOR
F	FIBER
FA	FIRE ALARM
FAC	FIRE ALARM CONDUIT
FAI	FRESH AIR INTAKE
FB	FIRE ALARM BOX
FBM	FOOT BOARD MEASUREMENT
FBP	FUTURE BEGIN PLATFORM
FC	FIBER CONDUIT OR FIRE CONNECTION
FD	FIBER DUCT, FLOOR DRAIN OR FIRE DEPARTMENT
FDN	FOUNDATION
FE	FLANGED END
FEP	FUTURE END PLATFORM
FF	FINISHED FLOOR OR FAR FACE
FFE	FINISH FLOOR ELEVATION
FG	FROG GAUGE PLATE OR FINISH GRADE
FH	FIRE HYDRANT
FIN	FINISH
FL	FLOW LINE, FUEL
FLG	FLANGE
FLP	FLOW LINE PIPE
FLR	FLOOR
FO	FIBER OPTIC
FP	FIRE PROTECTION
FPS	FEET PER SECOND
FR	FRAME
FS	FIRE SERVICE, FINISHED SURFACE, OR FAR SIDE
FT	FOOT OR FEET
F TO F	FACE TO FACE
FWL	FIRE WATER LINE
FWY	FREEWAY
G	GAS OR GAS LINE

BASE PROJECT

THE PREPARATION OF THIS DRAWING HAS BEEN FINANCED IN PART THROUGH A GRANT FROM THE U.S. DEPARTMENT OF TRANSPORTATION, FEDERAL TRANSIT ADMINISTRATION (FTA), UNDER THE FEDERAL TRANSIT ACT OF 1964, AS AMENDED, AND IN PART BY THE TAXES OF THE CITIZENS OF LOS ANGELES COUNTY AND OF THE STATE OF CALIFORNIA.

REV	DATE	BY	APP	REG NO	EXPIRES	SEAL HOLDER	DESCRIPTION

DESIGNED BY	C. PETROV
DRAWN BY	C. NATHAN
CHECKED BY	L. ABRAMSON
IN CHARGE	G. HEAD
DATE	12-10-10

FOR REVIEW ONLY NOT FOR CONSTRUCTION
LEE W ABRAMSON
C44285



LOS ANGELES COUNTY METROPOLITAN TRANSPORTATION AUTHORITY
6151 W. Century Blvd. Suite 800
Los Angeles, CA 90045
Phone: 310-337-0500 Fax: 310-337-0042

CRENSHAW/LAX TRANSIT CORRIDOR PROJECT
ABBREVIATIONS AND SYMBOLS
SHEET 1 OF 4

CONTRACT NO	E0117
DRAWING NO	G-005
SCALE	NONE
SHEET NO	5

c:\pwworking\hmm\st099999\dms02789\CLG005.plg
 11/30/2010 10:05:35 AM
 USER=st099999
 Pentable=MTA.TBL
 Plot Driver=pdf_11x17_rev1.plt

ABBREVIATIONS

MISCELLANEOUS CONT'D

<p>GA GAUGE (GAGE) GALV GALVANIZE OR GALVANIZED GAL(S) GALLON(S) GASD GASOLINE GB GRADE BREAK GM GAS METER GND GROUND GP GENERAL PACKAGE, GAUGE PLATE OR GRADING PLAN GR GRADE, GROUND OR GUARD RAIL PLATE GRS GALVANIZED RIGID STEEL GSC GALVANIZED STEEL CONDUIT GV GATE VALVE GW GUY WIRE</p> <p>H HEIGHT HAP HORIZONTAL ANGLE POINT HB HOSE BIB HC SANITARY SEWER HOUSE CONNECTION HDPE HIGH DENSITY POLYETHYLENE HF HEEL OF FROG HGL HYDRAULIC GRADE LINE HH HANDHOLE HL HEEL LENGTH HMWPE HIGH MOLECULAR WEIGHT POLYETHYLENE HORIZ HORIZONTAL HOV HIGH OCCUPANCY VEHICLE HP HIGH PRESSURE, HORSE POWER, HEEL PLATE OR HIGH POINT Hp HORSEPOWER HR HEADROOM OR HOUR HS HIGH STRENGTH STEEL ASTM 432 HWY HIGHWAY</p> <p>ID INSIDE DIAMETER IJ INSULATED JOINT IN INCH OR INCHES INT INTERIOR, INTRUSION INV INVERT IP IRON PIPE</p> <p>JS JUNCTION STRUCTURE JT JOINT</p> <p>K KIP OR KIPS KF KIP-FOOT KLF KIPS PER LINEAR FOOT KSF KIPS PER SQUARE FOOT KV KILOVOLT</p> <p>L LINE, LINING, OR LENGTH LAT LATERAL LBS OR # POUND(S) LD LEAD LF LINEAR FOOT (FEET) LG LONG OR LENGTH LGT LIGHT (REF) LH LEFT HAND LIN FT LINEAR FEET LJ LEADED JOINT LOC LOCATE, LOCATED, OR LOCATION LOG LIP OF GUTTER LOL LAYOUT LINE LP LOW PRESSURE OR LOW POINT LPT LOW POINT LRT LIGHT RAIL TRANSIT LT LEFT LTG LIGHTING</p> <p>M MAIN MACH MACHINE OR MACHINERY MAG MAGNESIUM OR MAGNETIC MAINT MAINTENANCE MAX MAXIMUM MCD MULTIPLE CONCRETE DUCT MCWD MULTIPLE CREOSOTED WOOD DUCTS MECH MECHANICAL MGL METRO GREEN LINE MH MAINTENANCE HOLE MIN MINIMUM, MINUTES MISC MISCELLANEOUS MJ MECHANICAL JOINT</p>	<p>ML MORTAR LINED ML & C MORTAR LINED & COATED MOD. MODIFIED MON MONUMENT MP MEDIUM PRESSURE MPH MILES PER HOUR MTC MULTI-TILE CONDUIT MTD MULTI-TILE DUCT MSE MECHANICAL STABILIZED EARTH</p> <p>N NORTH N/A NOT APPLICABLE NB NORTHBOUND NE NORTH EAST NF NEAR FACE NIC NOT IN CONTRACT N/N NORTH OF NORTH RIGHT-OF-WAY LINE N/O NORTH OF NO. OR # NUMBER NRC NON-REVENUE CONNECTOR NRCP NON-REINFORCED CONCRETE PIPE NS NEAR SIDE N/S NORTH OF SOUTH RIGHT-OF-WAY LINE NTS NOT TO SCALE NW NORTH WEST</p> <p>O OIL OC ON CENTER(S) OR OVERCROSSING OCS OVERHEAD CONTACT SYSTEM OD OUTSIDE DIAMETER OFC ORANGEBURG FIBER CONDUIT OG ORIGINAL GROUND OH OVERHEAD OPP OPPOSITE ORL ORNAMENTAL LIGHTING OTM OTHER TRACK MATERIAL</p> <p>P PIPE PA POLICE ALARM OR PUBLIC ADDRESS PB PULL BOX PCC PORTLAND CEMENT CONCRETE OR POINT OF COMPOUND CURVATURE PCCP PRE-STRESSED CONCRETE CYLINDER PIPE PCL PRIMARY CONTROL LINE PCS PIECES PD PAPER DUCT PE POLYETHYLENE OR PLAIN END PED PEDESTRIAN PEM POLYETHYLENE MAIN PF POINT OF FROG PGL PROFILE GRADE LINE PITO POINT OF INTERSECTION OF TURNOUT PIV POST INDICATOR VALVE PL OR P PLATE PPL PROPERTY LINE PLD PLASTIC DUCT PLT PLASTIC TILE PM PARKING METER PO PUSH-ON JOINT POC POINT OF CONNECTION POL POLICE PP POWER POLE OR PAPER PIPE PPD PAPER PIPE DUCT PRC POINT OF REVERSE CURVE PROD PRODUCT PROP PROPERTY OR PROPOSED PS POINT OF SWITCH PSF POUNDS PER SQUARE FOOT PSI POUNDS PER SQUARE INCH PSP PAINT SHOP PT(S) POINT(S) PV PLUG VALVE PVC POLYVINYL CHLORIDE PVCC POLYVINYL CHLORIDE CONDUIT PVCP POLYVINYL CHLORIDE PIPE PVMT PAVEMENT PWFb PUBLIC WORKS FIELD BOOK PwLB PUBLIC WORKS LEVEL BOOK PWR POWER</p> <p>QTY QUANTITY QUAD QUADRANT</p>	<p>R RADIUS RBM RAILBOUND MANGANESE RCB REINFORCED CONCRETE BOX (CULVERT) RCP REINFORCED CONCRETE PIPE RD ROAD RECT RECTANGLE OR RECTIFIER REF REFERENCE REINF REINFORCE, REINFORCED, OR REINFORCEMENT REOD REQUIRED OR REQUIRE RES RESIDENTIAL RET RETAINING RET W RETAINING WALL REV REVISE, REVISED, OR REVISION RGS RIGID GALVANIZED STEEL RH RIGHT HAND ROW RIGHT OF WAY RR RAILROAD RSP REVISED STANDARD PLAN RT RIGHT RTP RAIL TRANSIT PROJECT RY RAILWAY R/W RIGHT-OF-WAY</p> <p>S SOUTH, SLOPE, OR SIGN SA SERVICE AISLE SB SOUTHBOUND OR SPLICE BOX SCC STEEL CYLINDER CONCRETE (PIPE) SCL SECONDARY CONTROL LINE SCWD SINGLE CREOSOTED WOOD DUCT SD STORM DRAIN SDMH STORM DRAIN MANHOLE SE SOUTH EAST SEC SECONDS SECT SECTION SFP SITE FINISH PLAN SG SUB GRADE SHT SHEET SIG SIGNAL SIM SIMILAR SIP SUPPORT IN PLACE SL STREET LIGHT SLC STREET LIGHT CONDUIT SLPB STREET LIGHT PULL BOX SMH SEWER MANHOLE S/N SOUTH OF NORTH RIGHT-OF-WAY LINE SP SPACE, SPACING, OR SITE PLAN SPEC SPECIFICATION(S) (REF) SPR SPRINKLER SQ SQUARE S/S SOUTH OF SOUTH RIGHT-OF-WAY LINE SS SANITARY SEWER OR STOP SIGN SSD SANDSTONE CEMENT DUCT SSMH SANITARY SEWER MANHOLE ST STREET STA STATION STD STANDARD OR SEWER TILED DUCT STL STEEL STM STEAM STOR STORAGE STP STEEL PIPE STR STRAIGHT STRUCT STRUCTURE STY STYRENE SUB SUBMITTED SUPV SUPERVISE OR SUPERVISOR SURF SURFACE SW SWITCH, OR SOUTH WEST SWK SIDEWALK SYM SYMMETRICAL</p> <p>TAN TANGENT T & B TOP AND BOTTOM TC TILE CONDUIT, TOP OF CURB, TRACK CENTER, OR TRAIN CONTROL TCC TRAIN CONTROL/COMMUNICATIONS TCCB TRAIN CONTROL/COMMUNICATIONS BUILDING TCCR TRAIN CONTROL/COMMUNICATIONS ROOM TCPRJ PROJECTED TOP OF CURB TD TILE DUCT OR TILE DRAIN TEL, T TELEPHONE TELE TELESCOPING TEMP TEMPERATURE OR TEMPORARY</p>	<p>TERM TERMINAL TF TOP OF FACE TG TOP OF GRADE, TOP OF GRATE, OR TELEGRAPH THEO THEORETICAL THK THICK OR THICKNESS TL TRAFFIC LIGHT OR TOE LENGTH TMH TELEPHONE MANHOLE T.O. TURNOUT TOC TOP OF CURB TOP TOP OF PIPE TOS TOP OF SLOPE TP POLICE TELEPHONE OR TRACTION POWER TPS TRACTION POWER SUBSTATION TPSS TRACTION POWER SUPPLY SYSTEM T/LR TOP OF LOW RAIL T/R TOP OF RAIL TRANS TRANSITION TRD TRANSIT DUCT TRK TRACK TRPB TRANSIT SHELTER PULLBOX TS TRAFFIC SIGNAL TSC TRAFFIC SIGNAL CONDUIT TSCB TRAFFIC SIGNAL CONTROL BOX TSPB TRAFFIC SIGNAL PULLBOX TV TELEVISION TVCC TRANSPORTED VITRIFIED CLAY CONDUIT TVM TICKET VENDING MACHINE T/W TOP OF WALL TYP TYPICAL</p> <p>UC UNDERCROSSING OR UNDER CONSTRUCTION UD UNDERDRAIN UG UNDERGROUND UNK UNKNOWN UP UNDERPASS OR COMBINATION POWER/TELEPHONE POLE UPE UNDER PLATFORM EXHAUST UNO UNLESS NOTED OTHERWISE</p> <p>V VALVE, RATE OF SPEED, OR DESIGN SPEED VAC VACUUM VAP VERTICAL ANGLE POINT VAR VARIES OR VARIABLE VCC VITRIFIED CLAY CONDUIT VCD VITRIFIED CLAY DUCT VCP VITRIFIED CLAY PIPE VCP(ES) VITRIFIED CLAY PIPE (EXTRA STRENGTH) VCT VITRIFIED CLAY TILE VERT VERTICAL VLT VAULT</p> <p>W WEST OR WATER WITH WITH WB WESTBOUND WD WATER DETECTOR W/E WEST OF EAST RIGHT-OF-WAY LINE WG WHITE GAS WHH WATER HANDHOLE WHSE WAREHOUSE WI WROUGHT IRON WID WIDTH WIP WROUGHT IRON PIPE WL WATER LEVEL WLN WATER LINE WM WATER METER WMH WATER MANHOLE W/O WITHOUT WP WORKING POINT OR WORK POINT WSP WELDED STEEL PIPE WSP(L) WELDED STEEL PIPE (CEMENT LINED) WTR WATER WTW WALL TO WALL WV WATER VALVE WW WASTEWATER W/W WEST TO WEST RIGHT-OF-WAY LINE</p> <p>X-DRAIN CROSS DRAIN X-ING CROSSING X-MITER TRANSMITTER X-OVER CROSS OVER X-SECT CROSS SECTION</p>
---	--	---	---

BASE PROJECT

REV	DATE	BY	APP	REG NO	EXPIRES	SEAL HOLDER	DESCRIPTION													

DESIGNED BY C. PETROV
DRAWN BY C. NATHAN
CHECKED BY L. ABRAMSON
IN CHARGE G. HEAD
DATE 12-10-10

FOR REVIEW
ONLY NOT FOR
CONSTRUCTION
LEE W ABRAMSON
C44285

**LOS ANGELES COUNTY METROPOLITAN
TRANSPORTATION AUTHORITY**

6151 W. Century Blvd.
Suite 800
Los Angeles, CA 90045
Phone: 310-337-0500
Fax: 310-337-0042

**CRENSHAW/LAX
TRANSIT CORRIDOR PROJECT**
 ABBREVIATIONS AND SYMBOLS
 SHEET 2 OF 4

CONTRACT NO E0117	
DRAWING NO G-006	REV
SCALE SCALE: NONE	
SHEET NO 6	

c:\pwworking\hmm\st099999\dms02789\CLG006.plg
 11/30/2010 10:07:38 AM USER=st099999 Pentable=MTA.TBL Plot Driver=pdf_11x17_rev1.plt

SYMBOLS

SAND/CONC SURFACE		TREE GRATE	
SEWER, WATER OR GAS ENCASEMENT		TURNOUT WITH NUMBER INDICATED	
SHRUBBERY		UNDERDRAIN	
SIDEWALK (EXIST)		VALVE	
SIDEWALK (PROPOSED)		VAULT	
SIGNAL CONTROL BOX		WATER	
SIGNAL FLASHING TRAFFIC LOOP			
SINGLE CROSSOVER			
SPA			
SPOT ELEVATION			
STAND PIPE			
STATION EQUATION			
STEEL			
STREET LIGHT, TRAFFIC SIGNAL			
STONE WALL (EXIST)			
STONE WALL (PROPOSED)			
STORM DRAIN			
STREET LIGHT (EXIST)			
STREET LIGHT (PROPOSED)			
STREET SIGN			
SUBBALLAST			
SUBGRADE EARTH			
TANK			
TELEPHONE			
TIMBER			
TOP OF SLOPE			
TOE OF SLOPE			
TRACK CENTER LINE			
TRACTION POWER MANHOLE			
TRACTION POWER SUBSTATION			
TRAFFIC CONDUIT			
TRAFFIC SIGNAL CONTROLLER			
TRANSIT SIGNAL POLE			
TRANSIT SIGNAL			
TREE			
PALM TREE			
OAK TREE			
OTHER TREE			

Plot Driver = pdf_11x17_rev1.plt USER=sta99999 10:24:38 AM 11/30/2010 c:\pwworking\hmm\st099999\dms02789\CLG008.plg

REV	DATE	BY	APP	REG NO	EXPIRES	SEAL HOLDER	DESCRIPTION

DESIGNED BY C. NATHAN
DRAWN BY A. GIBBONS
CHECKED BY L. ABRAMSON
IN CHARGE G. HEAD
DATE 12-10-10

FOR REVIEW
ONLY NOT FOR
CONSTRUCTION
LEE W ABRAMSON
C44285

Metro

LOS ANGELES COUNTY METROPOLITAN
TRANSPORTATION AUTHORITY

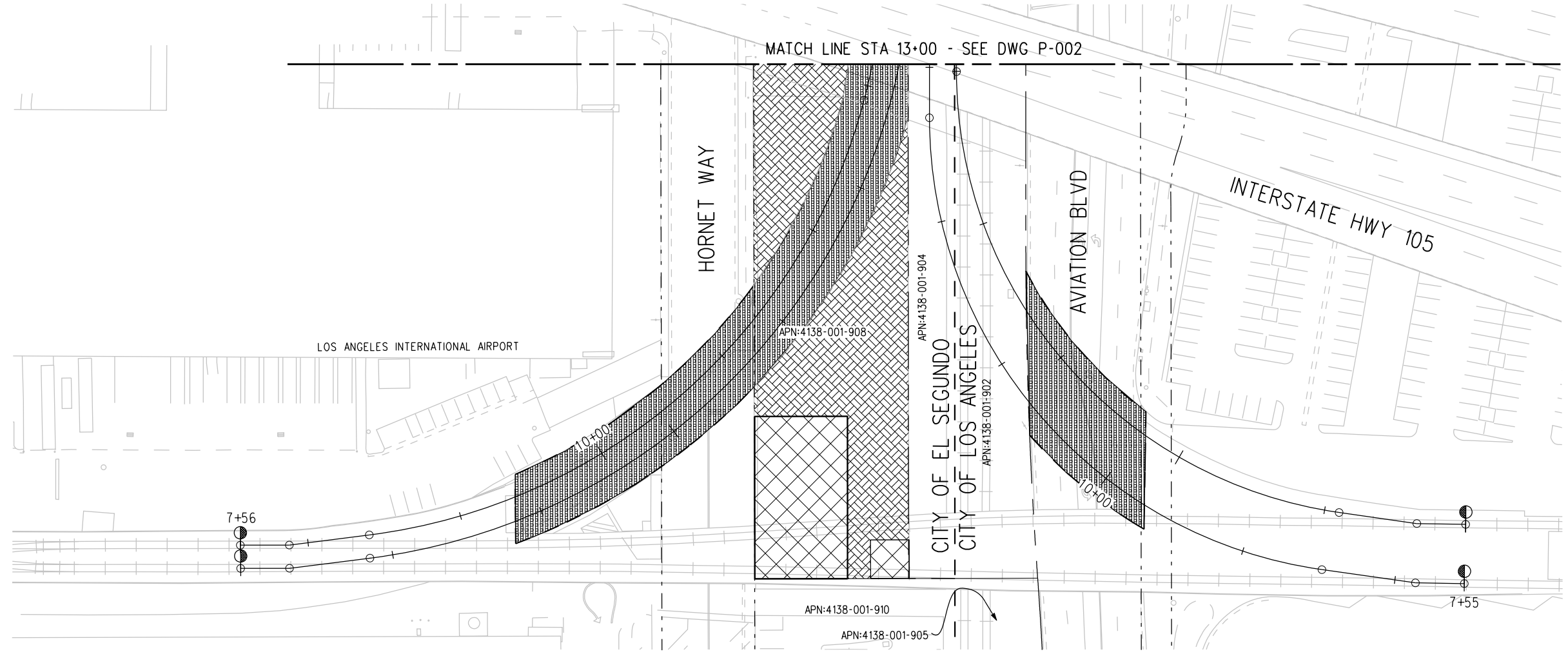
6151 W. Century Blvd.
Suite 800
Los Angeles, CA 90045
Phone: 310-337-0500
Fax: 310-337-0042

BASE PROJECT

**CRENSHAW/LAX
TRANSIT CORRIDOR PROJECT**

ABBREVIATIONS AND SYMBOLS
SHEET 4 OF 4

CONTRACT NO	E0117
DRAWING NO	G-008
SCALE	NONE
SHEET NO	8



NOTES:

1. SHADED AREAS SHOW ADDITIONAL ROW NEEDS.
2. SEE G-005 TO G-008 DRAWINGS FOR ADDITIONAL ABBREVIATIONS, SYMBOLS AND LEGENDS.
3. CITY LIMITS IDENTIFIED BY ANNOTATION WHERE CITY LIMITS AND METRO ROW COINCIDE.

LEGEND:

	BORED TUNNELING		UTILITY RELOCATION		PARCEL LINE
	CUT AND COVER TUNNEL OR STATION		CONSTRUCTION LAYDOWN AREA		CITY LIMITS (SEE DWG. P-001 NOTE 3)
	STRUCTURE - CUT, FILL, AT GRADE & STATIONS		TUNNEL STAGING		PROPOSED PUBLIC ROW
	STRUCTURE - AERIAL		PROPOSED CURB LINE		EXISTING PUBLIC ROW
	TPSS & SIGNAL HOUSE		METRO ROW		
	TUNNEL VENTILATION				
	PARK & RIDE & STATION FACILITIES				



BASE PROJECT

THE PREPARATION OF THIS DRAWING HAS BEEN FINANCED IN PART THROUGH A GRANT FROM THE U.S. DEPARTMENT OF TRANSPORTATION, FEDERAL TRANSIT ADMINISTRATION (FTA), UNDER THE FEDERAL TRANSIT ACT OF 1964, AS AMENDED, AND IN PART BY THE TAXES OF THE CITIZENS OF LOS ANGELES COUNTY AND OF THE STATE OF CALIFORNIA.							
REV	DATE	BY	APP	REG NO	EXPIRES	SEAL HOLDER	DESCRIPTION

DESIGNED BY F. NOURBAKHSH
DRAWN BY A. GIBBONS
CHECKED BY L. ABRAMSON
IN CHARGE G. HEAD
DATE 12-10-10

FOR REVIEW
ONLY NOT FOR
CONSTRUCTION
LEE W ABRAMSON
C44285

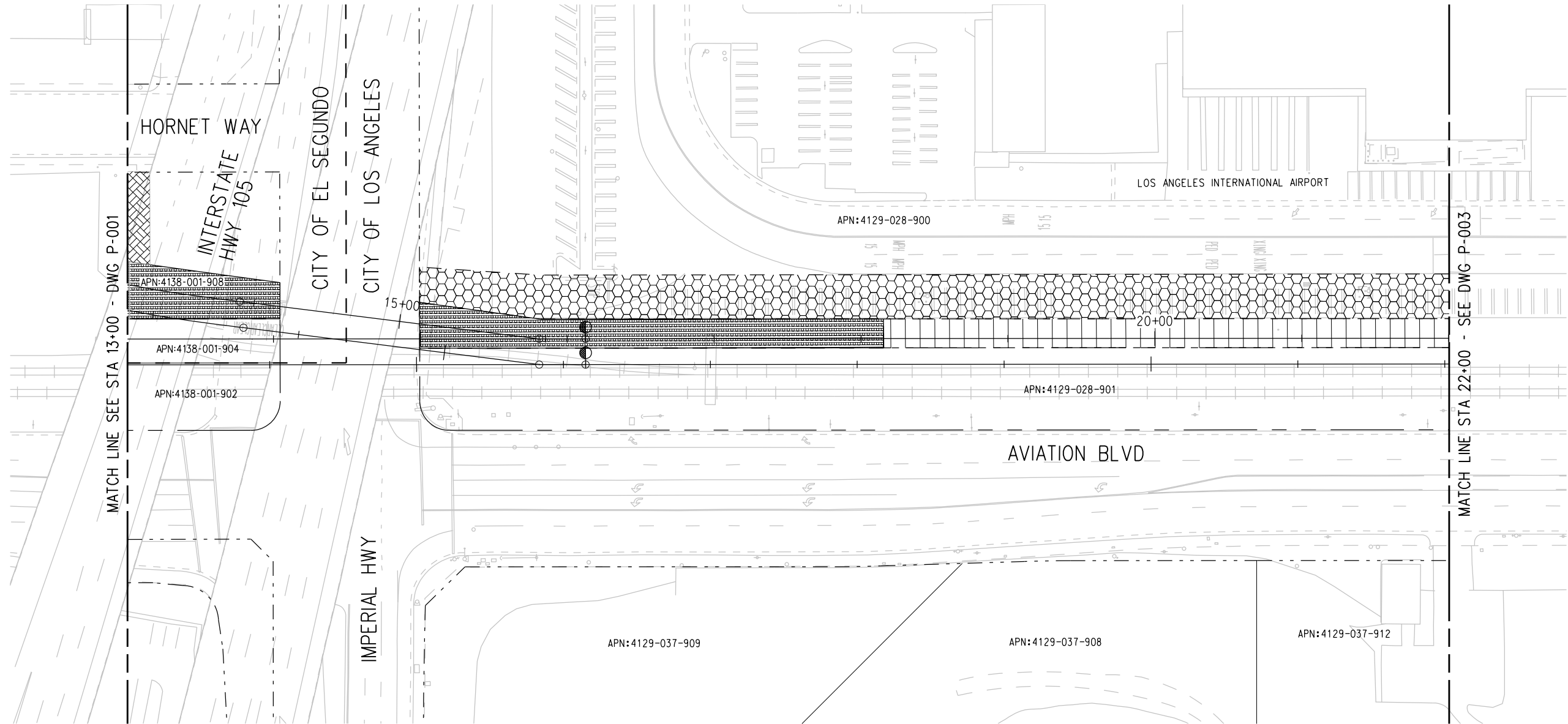
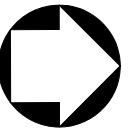
Metro LOS ANGELES COUNTY METROPOLITAN TRANSPORTATION AUTHORITY

Hatch Mott MacDonald
6151 W. Century Blvd. Suite 800
Los Angeles, CA 90045
Phone: 310-337-0500
Fax: 310-337-0042

CRENSHAW/LAX
TRANSIT CORRIDOR PROJECT
PROPOSED RIGHT OF WAY PLAN
STA 7+55 TO STA 13+00

CONTRACT NO E0117	REV 0
DRAWING NO P-001	
SCALE 1"=40'	
SHEET NO 55	

c:\pwworking\hmm\vas55585\dms02848\C\LP001.plg
 12/8/2010 3:39:46 PM
 USER=VAS55585
 Pentable-MTA.TBL
 Plot Driver=pdf_11x17_rev1.plt



LEGEND:

	BORED TUNNELING		UTILITY RELOCATION		PARCEL LINE
	CUT AND COVER TUNNEL OR STATION		CONSTRUCTION LAYDOWN AREA		CITY LIMITS (SEE DWG. P-001 NOTE 3)
	STRUCTURE - CUT, FILL, AT GRADE & STATIONS		TUNNEL STAGING		PROPOSED PUBLIC ROW
	STRUCTURE - AERIAL		PROPOSED CURB LINE		EXISTING PUBLIC ROW
	TPSS & SIGNAL HOUSE		METRO ROW		
	TUNNEL VENTILATION				
	PARK & RIDE & STATION FACILITIES				



BASE PROJECT

USER=sta99999 10:04:24 AM 12/9/2010 c:\pwworking\hmm\stg99999\dms02848\CLP002.plg
 Pentable=MTA.TBL
 Plot Driver=pdf_11x17_rev1.plt

THE PREPARATION OF THIS DRAWING HAS BEEN FINANCED IN PART THROUGH A GRANT FROM THE U.S. DEPARTMENT OF TRANSPORTATION, FEDERAL TRANSIT ADMINISTRATION (FTA), UNDER THE FEDERAL TRANSIT ACT OF 1964, AS AMENDED, AND IN PART BY THE TAXES OF THE CITIZENS OF LOS ANGELES COUNTY AND OF THE STATE OF CALIFORNIA.

REV	DATE	BY	APP	REG NO	EXPIRES	SEAL HOLDER	DESCRIPTION

DESIGNED BY
F. NOURBAKHSH
 DRAWN BY
A. GIBBONS
 CHECKED BY
L. ABRAMSON
 IN CHARGE
G. HEAD
 DATE
12-10-10

FOR REVIEW ONLY NOT FOR CONSTRUCTION
 LEE W ABRAMSON
 C44285

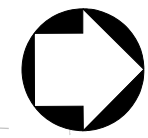
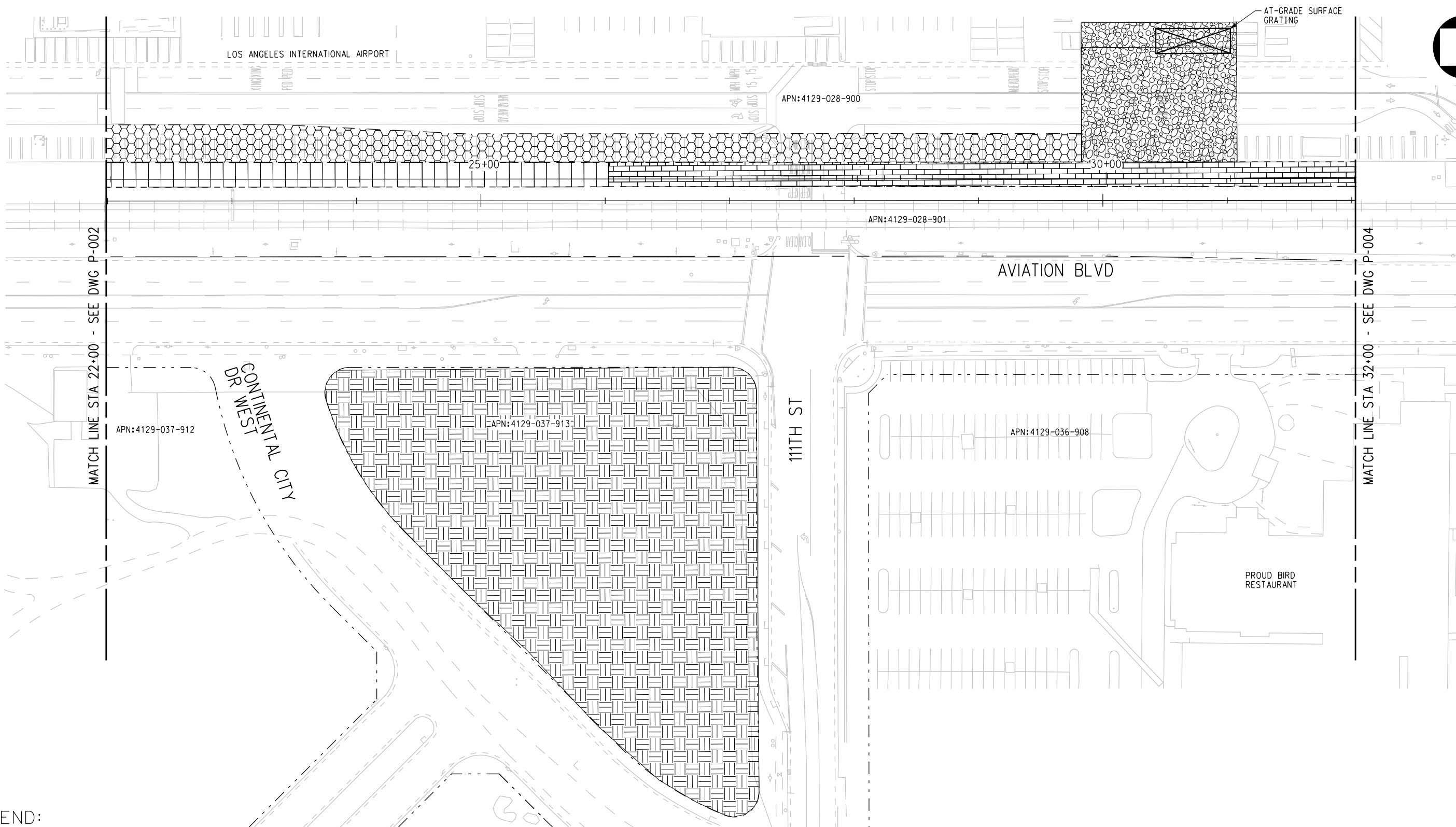
LOS ANGELES COUNTY METROPOLITAN TRANSPORTATION AUTHORITY
 6151 W. Century Blvd.
 Suite 800
 Los Angeles, CA 90045
 Phone: 310-337-0500
 Fax: 310-337-0042

Hatch Mott MacDonald

CRENSHAW/LAX TRANSIT CORRIDOR PROJECT
 PROPOSED RIGHT OF WAY PLAN
 STA 13+00 TO STA 22+00

CONTRACT NO	E0117	
DRAWING NO	P-002	REV 0
SCALE	1"=40'	
SHEET NO	56	

USER=sto99999 11:56:17 AM 12/9/2010 c:\pwworking\hmm\stg99999\dms02848\CLP003.plg
 Pentable=MTA.TBL
 Plot Driver=pdf_11x17_rev1.plt



LEGEND:

	BORED - TUNNELING		TUNNEL VENTILATION		PROPOSED PUBLIC ROW
	CUT AND COVER TUNNEL OR STATION		PARK & RIDE & STATION FACILITIES		PROPOSED CURB LINE
	STRUCTURE - CUT, FILL, AT GRADE & STATIONS		UTILITY RELOCATION		EXISTING PUBLIC ROW
	STRUCTURE - AERIAL		CONSTRUCTION AREA		METRO ROW
	TPSS & SIGNAL HOUSE		TUNNEL STAGING		PARCEL LINE
					CITY LIMITS (SEE DWG. P-001 NOTE 3)



BASE PROJECT

THE PREPARATION OF THIS DRAWING HAS BEEN FINANCED IN PART THROUGH A GRANT FROM THE U.S. DEPARTMENT OF TRANSPORTATION, FEDERAL TRANSIT ADMINISTRATION (FTA), UNDER THE FEDERAL TRANSIT ACT OF 1964, AS AMENDED, AND IN PART BY THE TAXES OF THE CITIZENS OF LOS ANGELES COUNTY AND OF THE STATE OF CALIFORNIA.						
REV	DATE	BY	APP	REG NO	EXPIRES	SEAL HOLDER

DESIGNED BY
 F. NOURBAKHSH
 DRAWN BY
 A. GIBBONS
 CHECKED BY
 L. ABRAMSON
 IN CHARGE
 G. HEAD
 DATE
 12-10-10

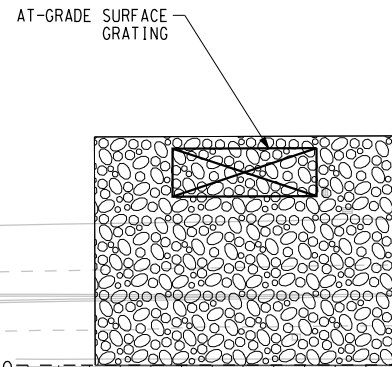
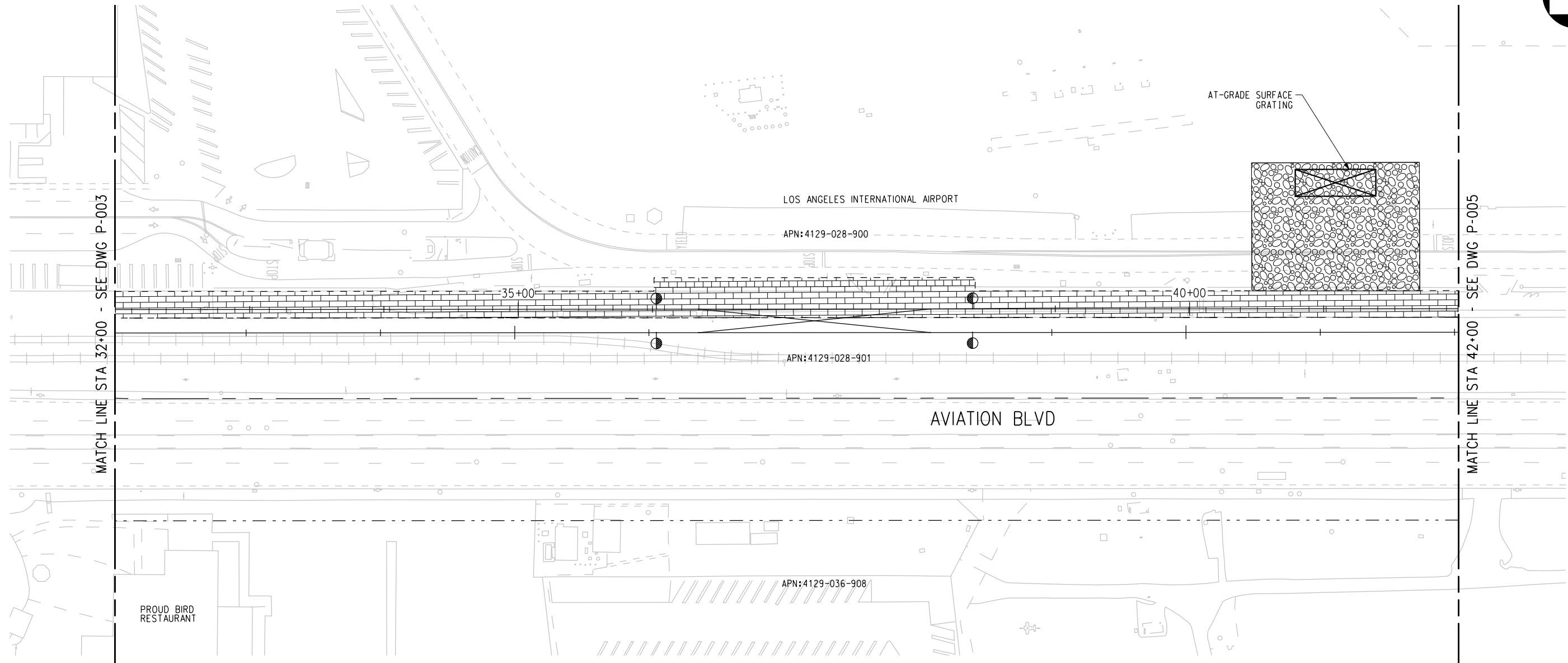
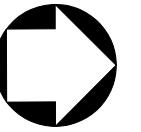
FOR REVIEW
 ONLY NOT FOR
 CONSTRUCTION
 LEE W ABRAMSON
 C44285

LOS ANGELES COUNTY METROPOLITAN TRANSPORTATION AUTHORITY

 6151 W. Century Blvd.
 Suite 800
 Los Angeles, CA 90045
 Phone: 310-337-0500
 Fax: 310-337-0042

CONTRACT NO
E0117
 DRAWING NO
P-003 REV
0
 SCALE
1"=40'
 SHEET NO
57

**CRENSHAW/LAX
 TRANSIT CORRIDOR PROJECT
 PROPOSED RIGHT OF WAY PLAN
 STA 22+00 TO STA 32+00**



LEGEND:

	BORED TUNNELING		UTILITY RELOCATION		PARCEL LINE
	CUT AND COVER TUNNEL OR STATION		CONSTRUCTION LAYDOWN AREA		CITY LIMITS (SEE DWG. P-001 NOTE 3)
	STRUCTURE - CUT, FILL, AT GRADE & STATIONS		TUNNEL STAGING		PROPOSED PUBLIC ROW
	STRUCTURE - AERIAL		PROPOSED CURB LINE		EXISTING PUBLIC ROW
	TPSS & SIGNAL HOUSE		METRO ROW		
	TUNNEL VENTILATION				
	PARK & RIDE & STATION FACILITIES				



BASE PROJECT

USER=VAS55585 3:58:44 PM 12/8/2010 c:\pwworking\hmm\vas55585\dms02848\C\LP004.plg
 Pentable-MTA.TBL
 Plot Driver=pdf_11x17_rev1.plt

THE PREPARATION OF THIS DRAWING HAS BEEN FINANCED IN PART THROUGH A GRANT FROM THE U.S. DEPARTMENT OF TRANSPORTATION, FEDERAL TRANSIT ADMINISTRATION (FTA), UNDER THE FEDERAL TRANSIT ACT OF 1964, AS AMENDED, AND IN PART BY THE TAXES OF THE CITIZENS OF LOS ANGELES COUNTY AND OF THE STATE OF CALIFORNIA.							
REV	DATE	BY	APP	REG NO	EXPIRES	SEAL HOLDER	DESCRIPTION

DESIGNED BY F. NOURBAKHSH
DRAWN BY A. GIBBONS
CHECKED BY L. ABRAMSON
IN CHARGE G. HEAD
DATE 12-10-10

FOR REVIEW ONLY NOT FOR CONSTRUCTION
 LEE W ABRAMSON
 C44285

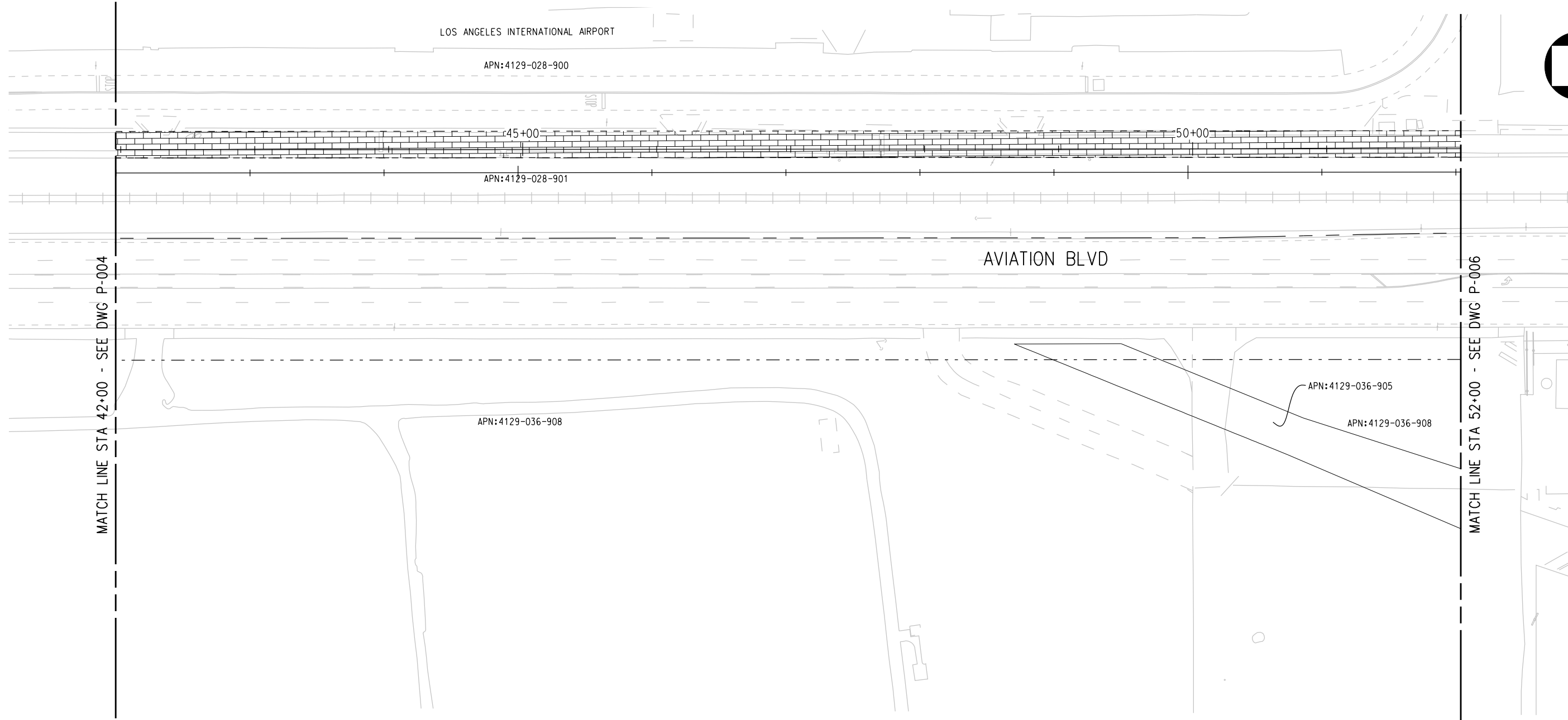
LOS ANGELES COUNTY METROPOLITAN TRANSPORTATION AUTHORITY
 6151 W. Century Blvd.
 Suite 800
 Los Angeles, CA 90045
 Phone: 310-337-0500
 Fax: 310-337-0042

Hatch Mott MacDonald

CRENSHAW/LAX TRANSIT CORRIDOR PROJECT
 PROPOSED RIGHT OF WAY PLAN
 STA 32+00 TO STA 42+00

CONTRACT NO	E0117
DRAWING NO	P-004
SCALE	1"=40'
SHEET NO	58

USER=sta99999 10:55:18 AM 11/30/2010 c:\pwworking\hmm\stg99999\dms02848\CLP005.plg
 Pentable=MTA.TBL
 Plot Driver=pdf_11x17_rev1.plt



LEGEND:

	BORED TUNNELING		UTILITY RELOCATION		PARCEL LINE
	CUT AND COVER TUNNEL		CONSTRUCTION LAYDOWN AREA		CITY LIMITS (SEE DWG. P-001 NOTE 3)
	STRUCTURE - CUT, FILL, AT GRADE & STATIONS		TUNNEL STAGING		PROPOSED PUBLIC ROW
	STRUCTURE - AERIAL		PROPOSED CURB LINE		EXISTING PUBLIC ROW
	TPSS & SIGNAL HOUSE		METRO ROW		
	TUNNEL VENTILATION				
	PARK & RIDE & STATION FACILITIES				



BASE PROJECT

THE PREPARATION OF THIS DRAWING HAS BEEN FINANCED IN PART THROUGH A GRANT FROM THE U.S. DEPARTMENT OF TRANSPORTATION, FEDERAL TRANSIT ADMINISTRATION (FTA), UNDER THE FEDERAL TRANSIT ACT OF 1964, AS AMENDED, AND IN PART BY THE TAXES OF THE CITIZENS OF LOS ANGELES COUNTY AND OF THE STATE OF CALIFORNIA.							
REV	DATE	BY	APP	REG NO	EXPIRES	SEAL HOLDER	DESCRIPTION

DESIGNED BY
 F. NOURBAKHSH
 DRAWN BY
 A. GIBBONS
 CHECKED BY
 L. ABRAMSON
 IN CHARGE
 G. HEAD
 DATE
 12-10-10

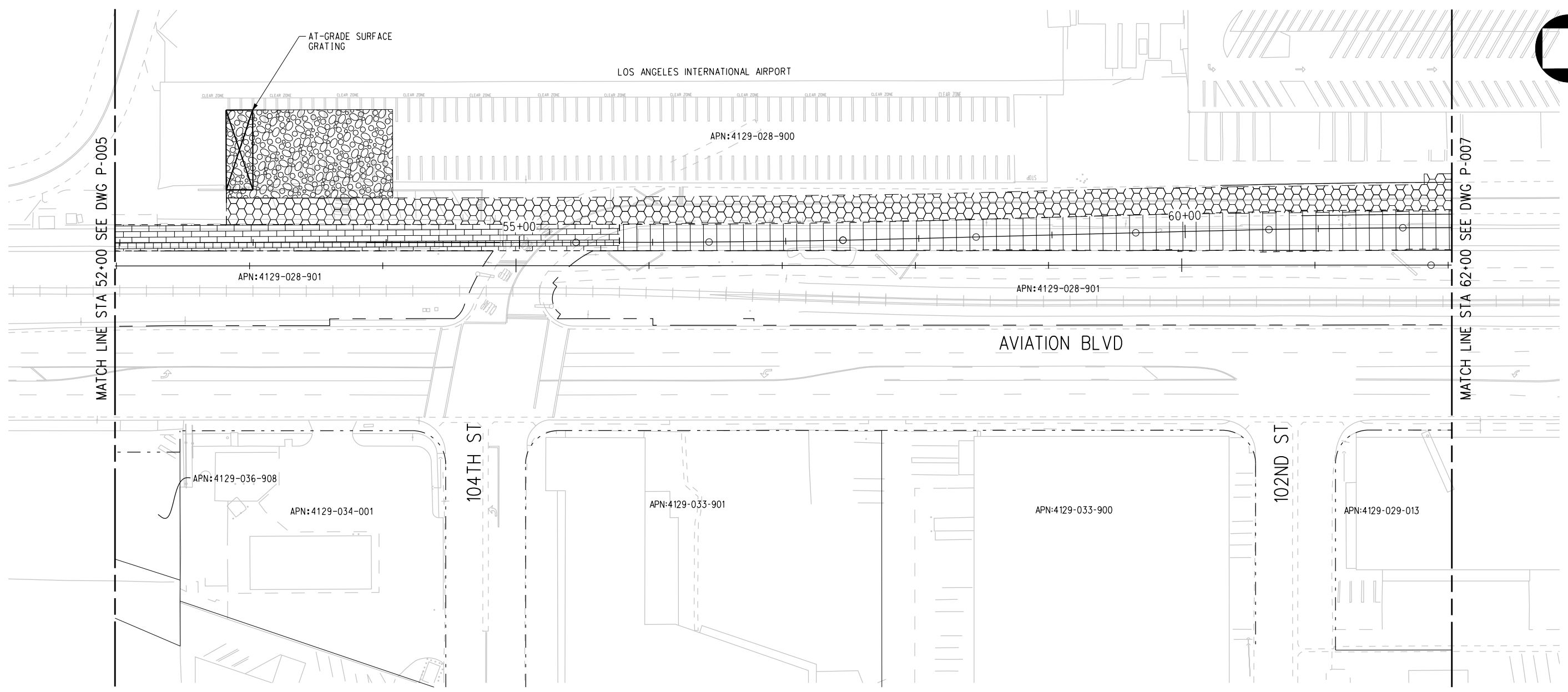
FOR REVIEW
 ONLY NOT FOR
 CONSTRUCTION
 LEE W ABRAMSON
 C44285

LOS ANGELES COUNTY METROPOLITAN TRANSPORTATION AUTHORITY
 6151 W. Century Blvd.
 Suite 800
 Los Angeles, CA 90045
 Phone: 310-337-0500
 Fax: 310-337-0042

**CRENSHAW/LAX
 TRANSIT CORRIDOR PROJECT
 PROPOSED RIGHT OF WAY PLAN
 STA 42+00 TO STA 52+00**

CONTRACT NO	E0117
DRAWING NO	P-005
SCALE	1"=40'
SHEET NO	59
REV	0

Plot Driver = pdf_11x17_rev1.plt
 Pentable = MTA.TBL
 USER = VAS55585 4:23:02 PM 12/8/2010 c:\pwworking\hmm\vas55585\dms02848\CLP006.plg



LEGEND:

	BORED TUNNELING		UTILITY RELOCATION		PARCEL LINE
	CUT AND COVER TUNNEL OR STATION		CONSTRUCTION LAYDOWN AREA		CITY LIMITS (SEE DWG. P-001 NOTE 3)
	STRUCTURE - CUT, FILL, AT GRADE & STATIONS		TUNNEL STAGING		PROPOSED PUBLIC ROW
	STRUCTURE - AERIAL		PROPOSED CURB LINE		EXISTING PUBLIC ROW
	TPSS & SIGNAL HOUSE		METRO ROW		
	TUNNEL VENTILATION				
	PARK & RIDE & STATION FACILITIES				



BASE PROJECT

THE PREPARATION OF THIS DRAWING HAS BEEN FINANCED IN PART THROUGH A GRANT FROM THE U.S. DEPARTMENT OF TRANSPORTATION, FEDERAL TRANSIT ADMINISTRATION (FTA), UNDER THE FEDERAL TRANSIT ACT OF 1964, AS AMENDED, AND IN PART BY THE TAXES OF THE CITIZENS OF LOS ANGELES COUNTY AND OF THE STATE OF CALIFORNIA.						
REV	DATE	BY	APP	REG NO	EXPIRES	SEAL HOLDER

DESIGNED BY
F. NOURBAKHSH
 DRAWN BY
A. GIBBONS
 CHECKED BY
L. ABRAMSON
 IN CHARGE
G. HEAD
 DATE
12-10-10

FOR REVIEW
ONLY NOT FOR
CONSTRUCTION
LEE W ABRAMSON
C44285

Metro
 LOS ANGELES COUNTY METROPOLITAN
 TRANSPORTATION AUTHORITY
 6151 W. Century Blvd.
 Suite 800
 Los Angeles, CA 90045
 Phone: 310-337-0500
 Fax: 310-337-0042

CONTRACT NO
E0117
 DRAWING NO
P-006
 SCALE
1"=40'
 SHEET NO
60

CRENSHAW/LAX
 TRANSIT CORRIDOR PROJECT
 PROPOSED RIGHT OF WAY PLAN
 STA 52+00 TO STA 62+00

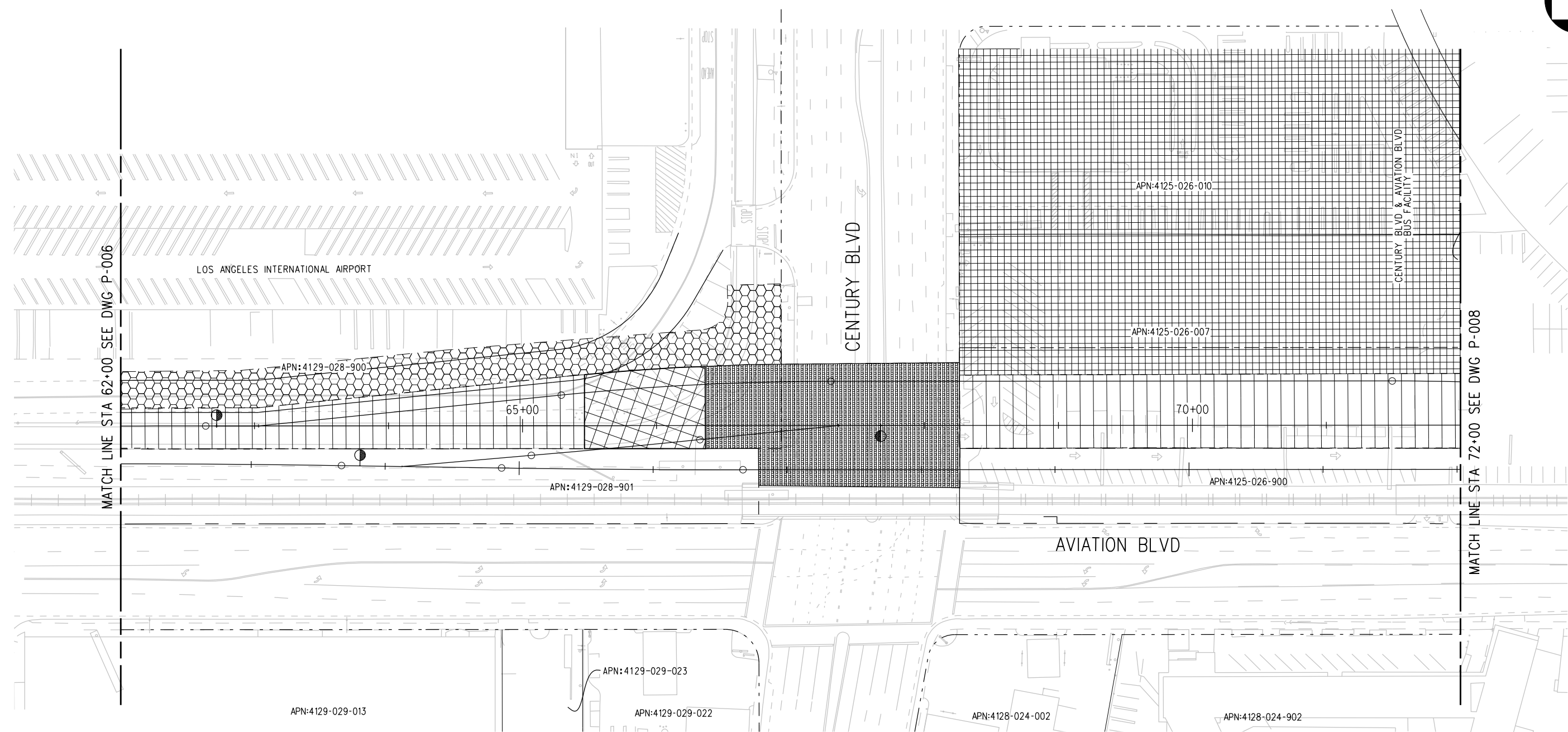
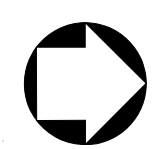
CONTRACT NO	E0117
DRAWING NO	P-006
SCALE	1"=40'
SHEET NO	60

c:\pwworking\hmm\vas55585\dms02848\CPLP007.plg

USER=VAS55585 5:08:57 PM 12/8/2010

Pentable=MTA.TBL

Plot Driver=pdf_11x17_rev1.plt



LEGEND:

	BORED TUNNELING		UTILITY RELOCATION		PARCEL LINE
	CUT AND COVER TUNNEL OR STATION		CONSTRUCTION LAYDOWN AREA		CITY LIMITS (SEE DWG. P-001 NOTE 3)
	STRUCTURE - CUT, FILL, AT GRADE & STATIONS		TUNNEL STAGING		PROPOSED PUBLIC ROW
	STRUCTURE - AERIAL		PROPOSED CURB LINE		EXISTING PUBLIC ROW
	TPSS & SIGNAL HOUSE		METRO ROW		
	TUNNEL VENTILATION				
	PARK & RIDE & STATION FACILITIES				



BASE PROJECT

THE PREPARATION OF THIS DRAWING HAS BEEN FINANCED IN PART THROUGH A GRANT FROM THE U.S. DEPARTMENT OF TRANSPORTATION, FEDERAL TRANSIT ADMINISTRATION (FTA), UNDER THE FEDERAL TRANSIT ACT OF 1964, AS AMENDED, AND IN PART BY THE TAXES OF THE CITIZENS OF LOS ANGELES COUNTY AND OF THE STATE OF CALIFORNIA.							
REV	DATE	BY	APP	REG NO	EXPIRES	SEAL HOLDER	DESCRIPTION

DESIGNED BY
F. NOURBAKHSH

DRAWN BY
A. GIBBONS

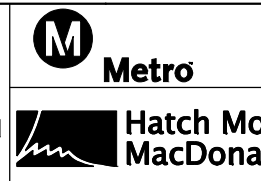
CHECKED BY
L. ABRAMSON

IN CHARGE
G. HEAD

DATE
12-10-10

FOR REVIEW ONLY NOT FOR CONSTRUCTION

LEE W ABRAMSON
C44285



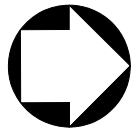
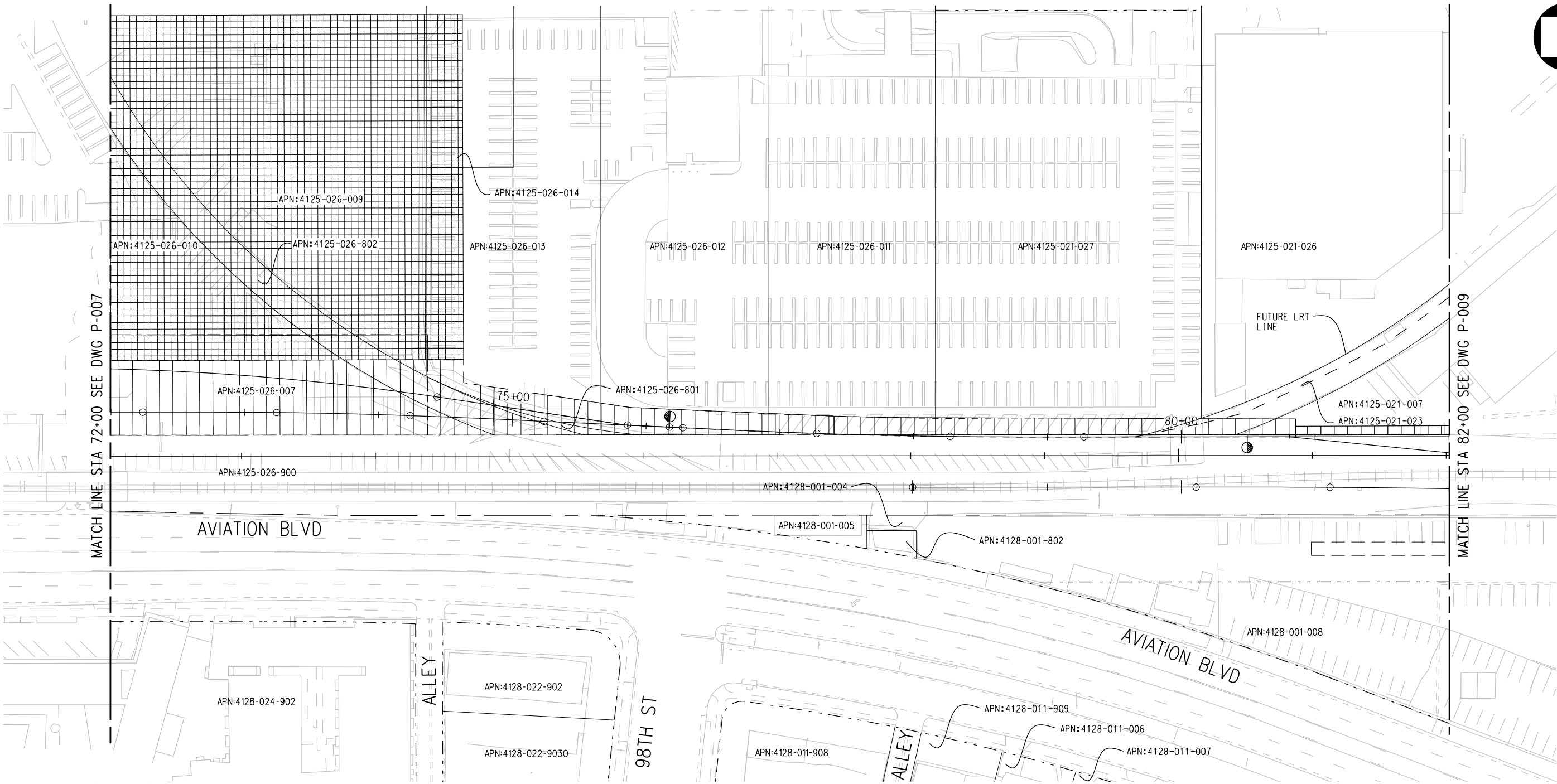
LOS ANGELES COUNTY METROPOLITAN TRANSPORTATION AUTHORITY

6151 W. Century Blvd.
Suite 800
Los Angeles, CA 90045
Phone: 310-337-0500
Fax: 310-337-0042

CRENSHAW/LAX TRANSIT CORRIDOR PROJECT
PROPOSED RIGHT OF WAY PLAN
STA 62+00 TO STA 72+00

CONTRACT NO	E0117
DRAWING NO	P-007
SCALE	1"=40'
SHEET NO	61

Plot Driver=pdf_11x17_rev1.plt Pentable=MTA.TBL 12/8/2010 6:08:27 PM USER=VAS55585 c:\pwworking\hmm\vas55585\dms02848\C\LP008.plg



LEGEND:

- | | | | | | |
|--|--|--|---------------------------|--|--|
| | BORED TUNNELING | | UTILITY RELOCATION | | PARCEL LINE |
| | CUT AND COVER TUNNEL OR STATION | | CONSTRUCTION LAYDOWN AREA | | CITY LIMITS
(SEE DWG. P-001 NOTE 3) |
| | STRUCTURE - CUT, FILL, AT GRADE & STATIONS | | TUNNEL STAGING | | PROPOSED PUBLIC ROW |
| | STRUCTURE - AERIAL | | PROPOSED CURB LINE | | EXISTING PUBLIC ROW |
| | TPSS & SIGNAL HOUSE | | METRO ROW | | |
| | TUNNEL VENTILATION | | | | |
| | PARK & RIDE & STATION FACILITIES | | | | |



BASE PROJECT

THE PREPARATION OF THIS DRAWING HAS BEEN FINANCED IN PART THROUGH A GRANT FROM THE U.S. DEPARTMENT OF TRANSPORTATION, FEDERAL TRANSIT ADMINISTRATION (FTA), UNDER THE FEDERAL TRANSIT ACT OF 1964, AS AMENDED, AND IN PART BY THE TAXES OF THE CITIZENS OF LOS ANGELES COUNTY AND OF THE STATE OF CALIFORNIA.						
REV	DATE	BY	APP	REG NO	EXPIRES	SEAL HOLDER

DESIGNED BY
F. NOURBAKHSH
DRAWN BY
A. GIBBONS
CHECKED BY
L. ABRAMSON
IN CHARGE
G. HEAD
DATE
12-10-10

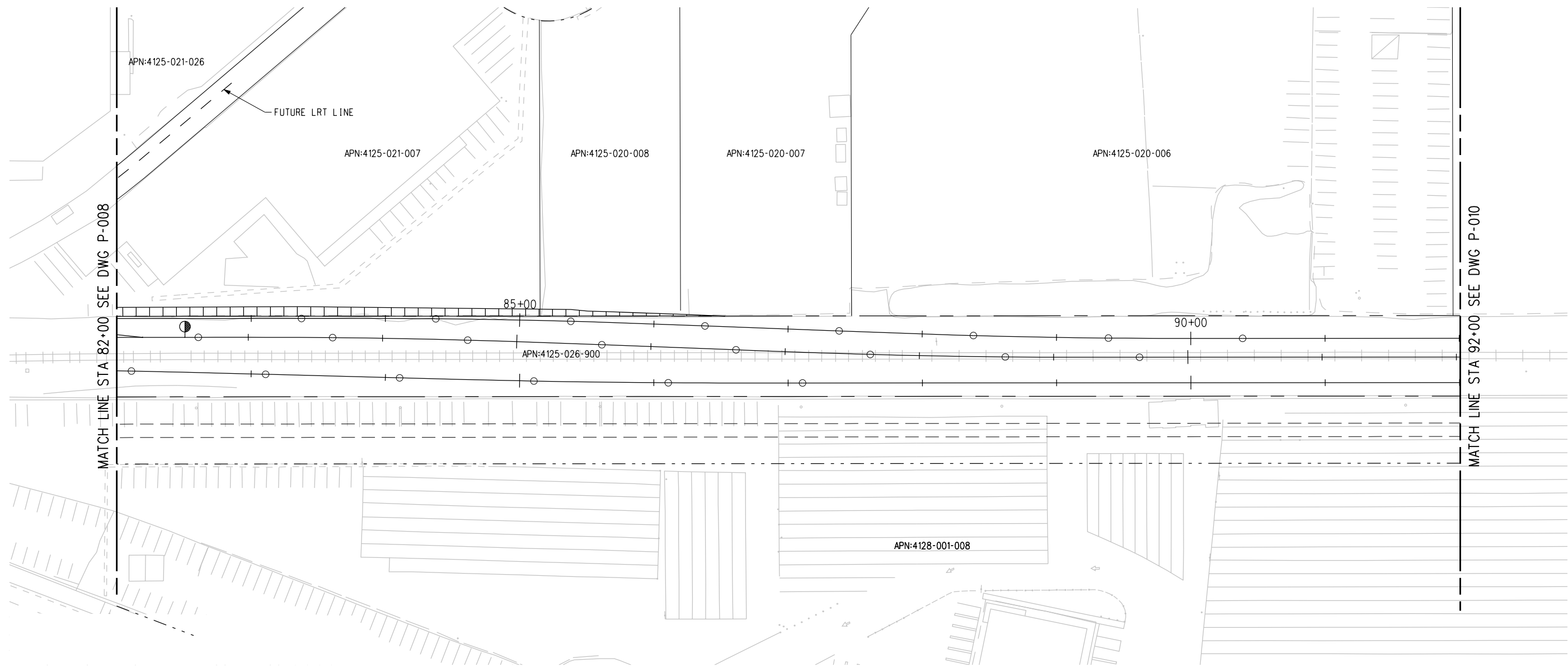
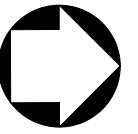
FOR REVIEW ONLY NOT FOR CONSTRUCTION
LEE W ABRAMSON
C44285

Metro LOS ANGELES COUNTY METROPOLITAN TRANSPORTATION AUTHORITY

Hatch Mott MacDonald
6151 W. Century Blvd. Suite 800
Los Angeles, CA 90045
Phone: 310-337-0500
Fax: 310-337-0042

CRENSHAW/LAX TRANSIT CORRIDOR PROJECT
PROPOSED RIGHT OF WAY PLAN
STA 72+00 TO STA 82+00

CONTRACT NO	E0117
DRAWING NO	P-008
SCALE	1"=40'
SHEET NO	62
REV	0



LEGEND:

	BORED TUNNELING		UTILITY RELOCATION		PARCEL LINE
	CUT AND COVER TUNNEL OR STATION		CONSTRUCTION LAYDOWN AREA		CITY LIMITS (SEE DWG. P-001 NOTE 3)
	STRUCTURE - CUT, FILL, AT GRADE & STATIONS		TUNNEL STAGING		PROPOSED PUBLIC ROW
	STRUCTURE - AERIAL		PROPOSED CURB LINE		EXISTING PUBLIC ROW
	TPSS & SIGNAL HOUSE		METRO ROW		
	TUNNEL VENTILATION				
	PARK & RIDE & STATION FACILITIES				



BASE PROJECT

USER=VAS55585 12/8/2010 6:16:41 PM c:\pwworking\hmm\vas55585\dms02848\C\LP009.plg
 Pentable-MTA.TBL
 Plot Driver=pdf_11x17_rev1.plt

THE PREPARATION OF THIS DRAWING HAS BEEN FINANCED IN PART THROUGH A GRANT FROM THE U.S. DEPARTMENT OF TRANSPORTATION, FEDERAL TRANSIT ADMINISTRATION (FTA), UNDER THE FEDERAL TRANSIT ACT OF 1964, AS AMENDED, AND IN PART BY THE TAXES OF THE CITIZENS OF LOS ANGELES COUNTY AND OF THE STATE OF CALIFORNIA.

REV	DATE	BY	APP	REG NO	EXPIRES	SEAL HOLDER	DESCRIPTION

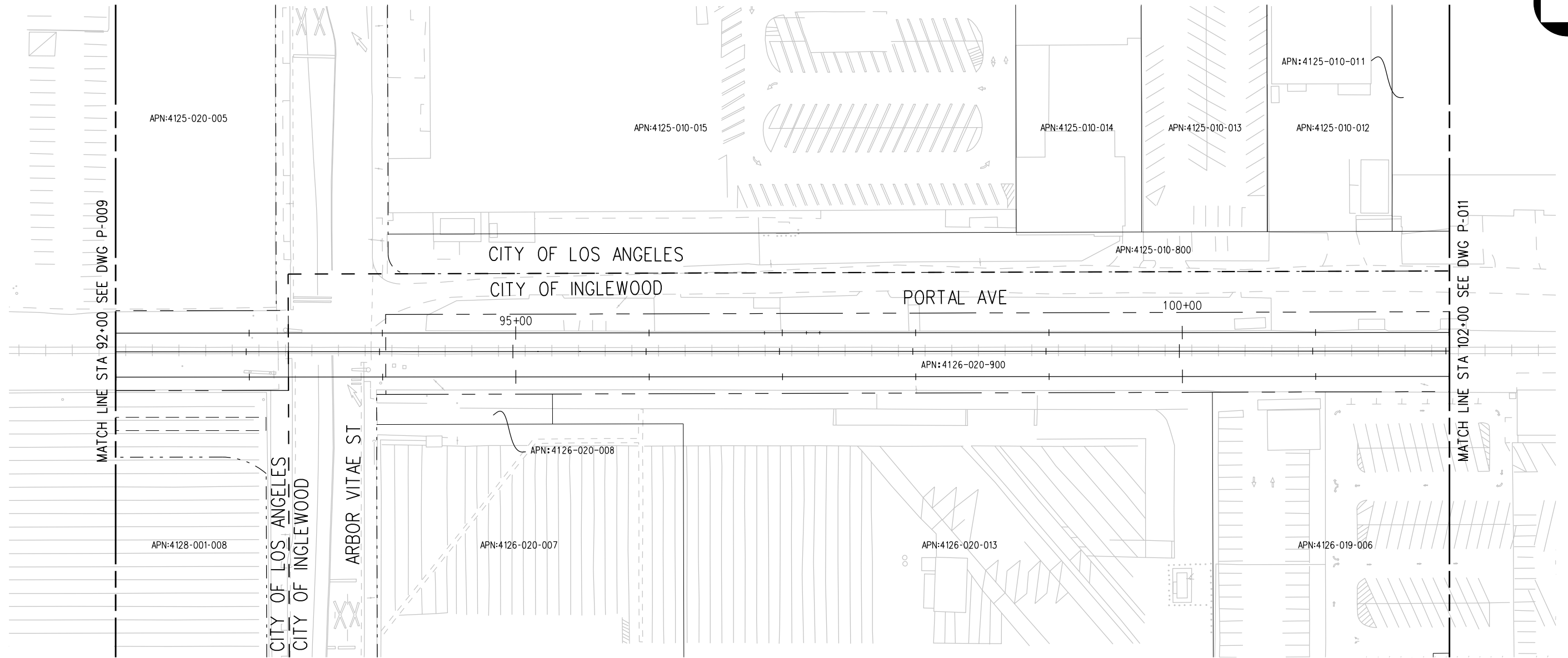
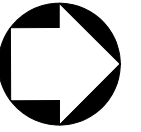
DESIGNED BY
 F. NOURBAKHSH
 DRAWN BY
 A. GIBBONS
 CHECKED BY
 L. ABRAMSON
 IN CHARGE
 G. HEAD
 DATE
 12-10-10

FOR REVIEW
 ONLY NOT FOR
 CONSTRUCTION
 LEE W ABRAMSON
 C44285

LOS ANGELES COUNTY METROPOLITAN TRANSPORTATION AUTHORITY
 6151 W. Century Blvd.
 Suite 800
 Los Angeles, CA 90045
 Phone: 310-337-0500
 Fax: 310-337-0042

**CRENSHAW/LAX
 TRANSIT CORRIDOR PROJECT
 PROPOSED RIGHT OF WAY PLAN
 STA 82+00 TO STA 92+00**

CONTRACT NO	E0117
DRAWING NO	P-009
SCALE	1"=40'
SHEET NO	63



LEGEND:

	BORED TUNNELING		UTILITY RELOCATION		PARCEL LINE
	CUT AND COVER TUNNEL OR STATION		CONSTRUCTION LAYDOWN AREA		CITY LIMITS (SEE DWG. P-001 NOTE 3)
	STRUCTURE - CUT, FILL, AT GRADE & STATIONS		TUNNEL STAGING		PROPOSED PUBLIC ROW
	STRUCTURE - AERIAL		PROPOSED CURB LINE		EXISTING PUBLIC ROW
	TPSS & SIGNAL HOUSE		METRO ROW		
	TUNNEL VENTILATION				
	PARK & RIDE & STATION FACILITIES				



BASE PROJECT

USER=VAS55585 6:43:04 PM 12/8/2010 c:\pwworking\hmm\vas55585\dms02848\CLP010.plg
 Pentable-MTA.TBL
 Plot Driver=pdf_11x17_rev1.plt

THE PREPARATION OF THIS DRAWING HAS BEEN FINANCED IN PART THROUGH A GRANT FROM THE U.S. DEPARTMENT OF TRANSPORTATION, FEDERAL TRANSIT ADMINISTRATION (FTA), UNDER THE FEDERAL TRANSIT ACT OF 1964, AS AMENDED, AND IN PART BY THE TAXES OF THE CITIZENS OF LOS ANGELES COUNTY AND OF THE STATE OF CALIFORNIA.							
REV	DATE	BY	APP	REG NO	EXPIRES	SEAL HOLDER	DESCRIPTION

DESIGNED BY F. NOURBAKHSH
DRAWN BY A. GIBBONS
CHECKED BY L. ABRAMSON
IN CHARGE G. HEAD
DATE 12-10-10

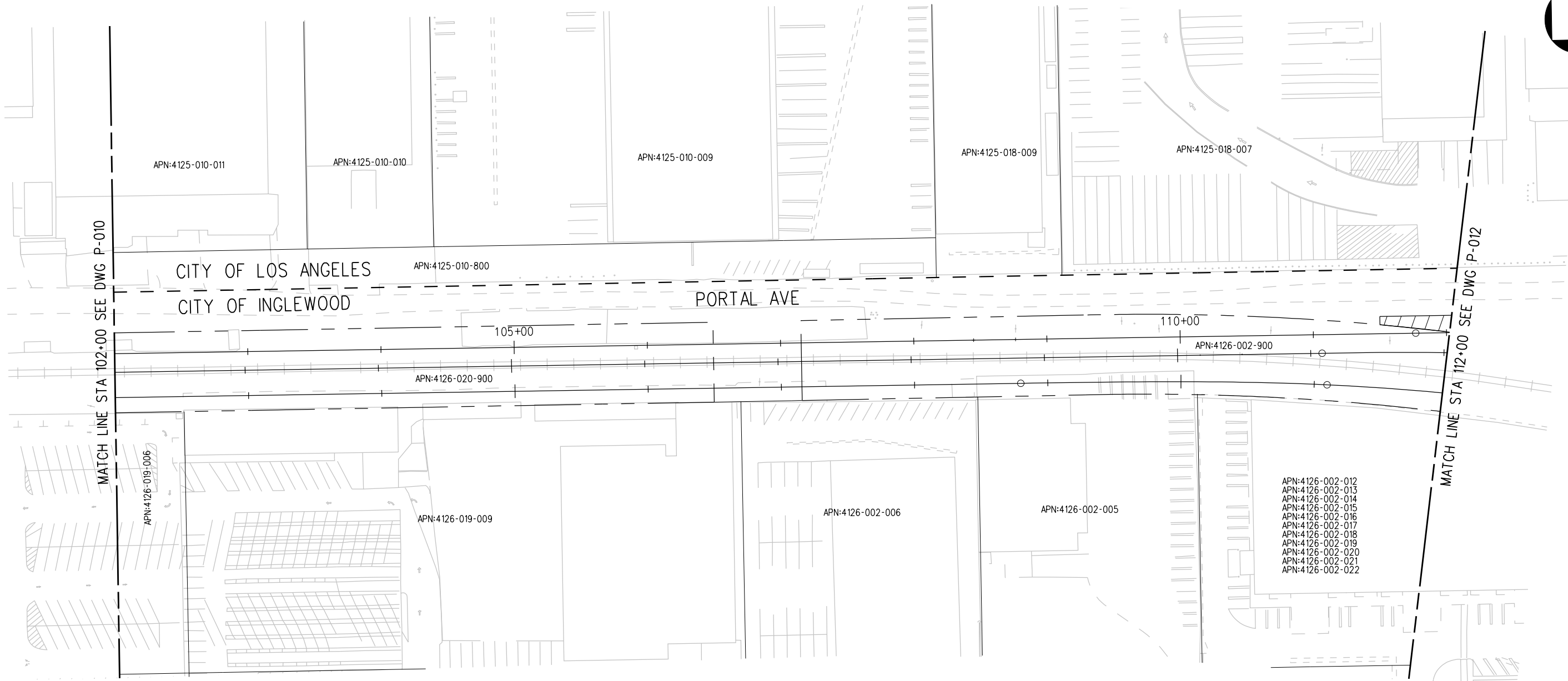
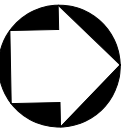
FOR REVIEW ONLY NOT FOR CONSTRUCTION
LEE W ABRAMSON
C44285

LOS ANGELES COUNTY METROPOLITAN TRANSPORTATION AUTHORITY

6151 W. Century Blvd.
Suite 800
Los Angeles, CA 90045
Phone: 310-337-0500
Fax: 310-337-0042

CRENSHAW/LAX TRANSIT CORRIDOR PROJECT
PROPOSED RIGHT OF WAY PLAN
STA 92+00 TO STA 102+00

CONTRACT NO	E0117
DRAWING NO	P-010
SCALE	1"=40'
SHEET NO	64



APN:4125-010-011

APN:4125-010-010

APN:4125-010-009

APN:4125-018-009

APN:4125-018-007

CITY OF LOS ANGELES
CITY OF INGLEWOOD

APN:4125-010-800

PORTAL AVE

105+00

110+00

APN:4126-020-900

APN:4126-002-900

APN:4126-019-006

APN:4126-019-009

APN:4126-002-006

APN:4126-002-005

APN:4126-002-012
APN:4126-002-013
APN:4126-002-014
APN:4126-002-015
APN:4126-002-016
APN:4126-002-017
APN:4126-002-018
APN:4126-002-019
APN:4126-002-020
APN:4126-002-021
APN:4126-002-022

MATCH LINE STA 102+00 SEE DWG P-010

MATCH LINE STA 112+00 SEE DWG P-012

LEGEND:

	BORED TUNNELING		UTILITY RELOCATION		PARCEL LINE
	CUT AND COVER TUNNEL OR STATION		CONSTRUCTION LAYDOWN AREA		CITY LIMITS (SEE DWG. P-001 NOTE 3)
	STRUCTURE - CUT, FILL, AT GRADE & STATIONS		TUNNEL STAGING		PROPOSED PUBLIC ROW
	STRUCTURE - AERIAL		PROPOSED CURB LINE		EXISTING PUBLIC ROW
	TPSS & SIGNAL HOUSE		METRO ROW		
	TUNNEL VENTILATION				
	PARK & RIDE & STATION FACILITIES				



BASE PROJECT

THE PREPARATION OF THIS DRAWING HAS BEEN FINANCED IN PART THROUGH A GRANT FROM THE U.S. DEPARTMENT OF TRANSPORTATION, FEDERAL TRANSIT ADMINISTRATION (FTA), UNDER THE FEDERAL TRANSIT ACT OF 1964, AS AMENDED, AND IN PART BY THE TAXES OF THE CITIZENS OF LOS ANGELES COUNTY AND OF THE STATE OF CALIFORNIA.

REV	DATE	BY	APP	REG NO	EXPIRES	SEAL HOLDER	DESCRIPTION

DESIGNED BY
F. NOURBAKHSH
DRAWN BY
A. GIBBONS
CHECKED BY
L. ABRAMSON
IN CHARGE
G. HEAD
DATE
12-10-10

FOR REVIEW
ONLY NOT FOR
CONSTRUCTION
LEE W ABRAMSON
C44285



LOS ANGELES COUNTY METROPOLITAN
TRANSPORTATION AUTHORITY
6151 W. Century Blvd.
Suite 800
Los Angeles, CA 90045
Phone: 310-337-0500
Fax: 310-337-0042

CRENSHAW/LAX
TRANSIT CORRIDOR PROJECT
PROPOSED RIGHT OF WAY PLAN
STA 102+00 TO STA 112+00

CONTRACT NO	E0117
DRAWING NO	P-011
SCALE	1"=40'
SHEET NO	65

USER=VAS55585 7:50:43 PM 12/8/2010 c:\pwworking\hmm\vas55585\dms02848\CLP011.plt
 Pentable-MTA.TBL Plot Driver=pdf_11x17_rev1.plt