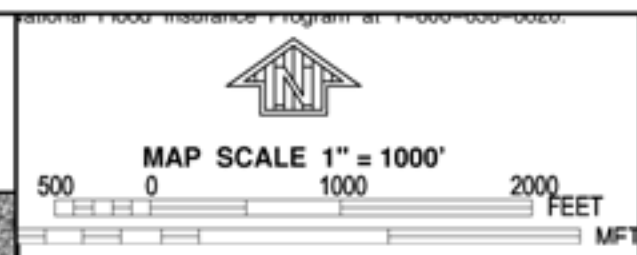
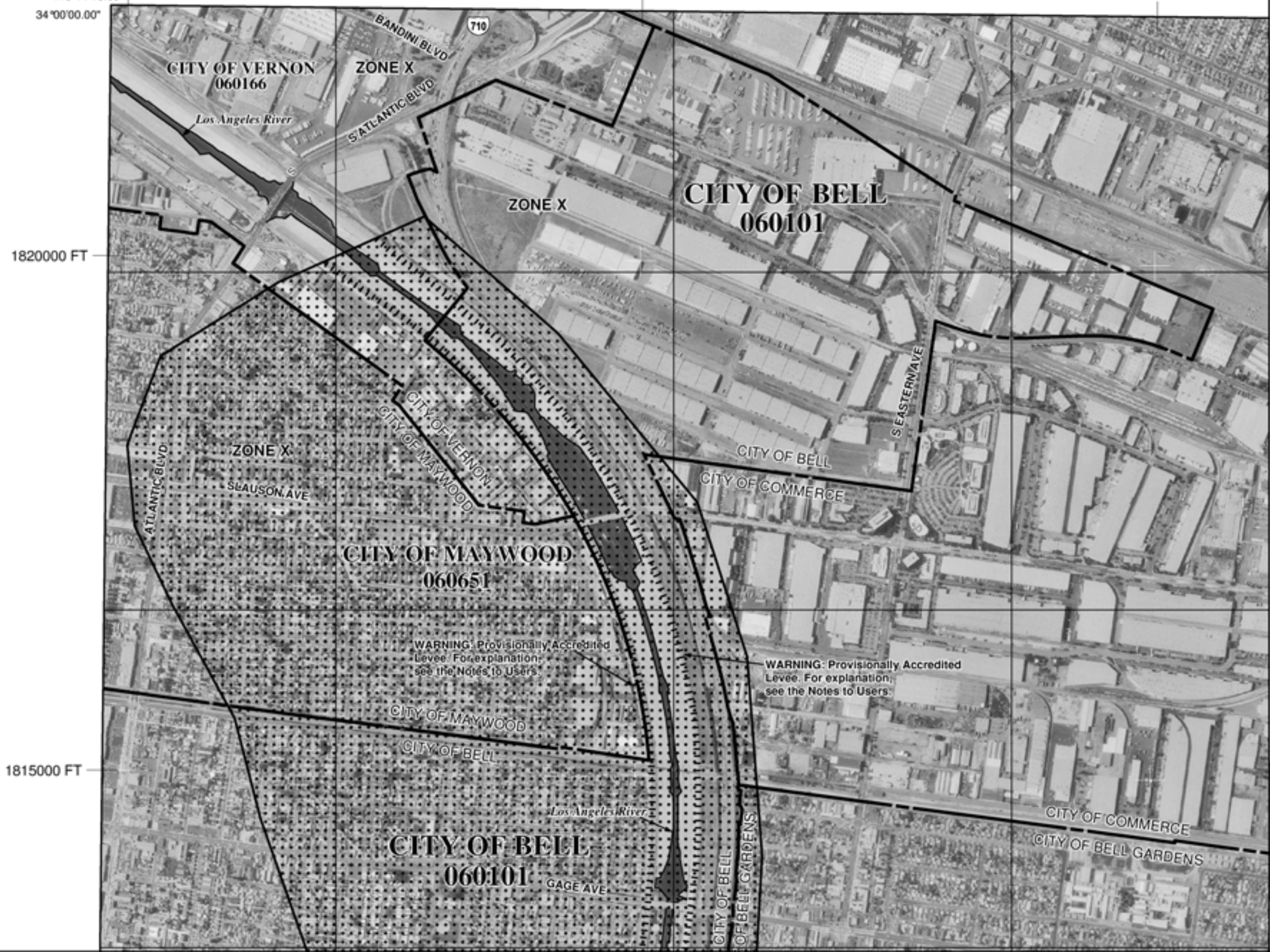


Appendix K FLOODPLAIN INSURANCE RATE MAPS

This page intentionally left blank



6505000 FT 118°11'15.00" JOINS PANEL 1643 6510000 FT 6515000 FT



NFIP PANEL 1810F


FIRM
FLOOD INSURANCE RATE MAP
LOS ANGELES COUNTY,
CALIFORNIA
AND INCORPORATED AREAS

PANEL 1810 OF 2350
(SEE MAP INDEX FOR FIRM PANEL LAYOUT)

CONTAINS:

COMMUNITY	NUMBER	PANEL	SUFFIX
BELL GARDENS, CITY OF	06066	1810	F
BELL, CITY OF	060101	1810	F
COMMERCE, CITY OF	06010	1810	F
CLUNAY, CITY OF	06057	1810	F
DOWNY, CITY OF	06045	1810	F
MAYWOOD, CITY OF	06051	1810	F
MONTEBELLO, CITY OF	06041	1810	F
SOUTH GATE, CITY OF	060183	1810	F
VERNON, CITY OF	060166	1810	F

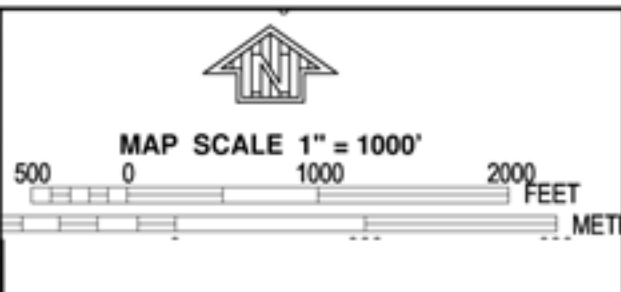
Notice to User: The Map Number shown below should be used when placing map orders, the Community Number shown above should be used on insurance applications for the subject community.

 MAP NUMBER
06037C1810F
EFFECTIVE DATE
SEPTEMBER 26, 2008

Federal Emergency Management Agency

This is an official copy of a portion of the above referenced flood map. It was extracted using F-MIT On-Line. This map does not reflect changes or amendments which may have been made subsequent to the date on the title block. For the latest product information about National Flood Insurance Program flood maps check the FEMA Flood Map Store at www.msc.fema.gov

This page intentionally left blank



NFIP

PANEL 1810F

FIRM
FLOOD INSURANCE RATE MAP
LOS ANGELES COUNTY,
CALIFORNIA
AND INCORPORATED AREAS

PANEL 1810 OF 2350
 (SEE MAP INDEX FOR FIRM PANEL LAYOUT)

CONTAINS:

COMMUNITY	NUMBER	PANEL	SUFFIX
BELL GARDENS, CITY OF	06066	1810	F
BELL, CITY OF	06010	1810	F
COMMERCE, CITY OF	06010	1810	F
CUDAHY, CITY OF	06057	1810	F
DOWNEY, CITY OF	06045	1810	F
MAYWOOD, CITY OF	06051	1810	F
MONTEBELLO, CITY OF	06041	1810	F
SOUTH GATE, CITY OF	06063	1810	F
VERNON, CITY OF	06066	1810	F

Notice to User: The Map Number shown below should be used when placing map orders; the Community Number shown above should be used on insurance applications for the subject community.



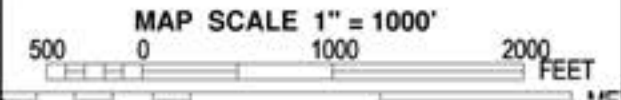
MAP NUMBER
 06037C1810F

EFFECTIVE DATE
 SEPTEMBER 26, 2008

Federal Emergency Management Agency

This is an official copy of a portion of the above referenced flood map. It was extracted using F-MIT On-Line. This map does not reflect changes or amendments which may have been made subsequent to the date on the title block. For the latest product information about National Flood Insurance Program flood maps check the FEMA Flood Map Store at www.msc.fema.gov

This page intentionally left blank



NATIONAL FLOOD INSURANCE PROGRAM

PANEL 1810F

FIRM
FLOOD INSURANCE RATE MAP
LOS ANGELES COUNTY,
CALIFORNIA
AND INCORPORATED AREAS

PANEL 1810 OF 2350
(SEE MAP INDEX FOR FIRM PANEL LAYOUT)

CONTAINS:

COMMUNITY	NUMBER	PANEL	SUFFIX
BELL GARDENS, CITY OF	060656	1810	F
BELL, CITY OF	060101	1810	F
COMMERCE, CITY OF	060110	1810	F
CUDAHY, CITY OF	060657	1810	F
DOWNEY, CITY OF	060645	1810	F
MAYWOOD, CITY OF	060651	1810	F
MONTROSE, CITY OF	060141	1810	F
SOUTH GATE, CITY OF	060163	1810	F
VERNON, CITY OF	060136	1810	F

Notice to User: The Map Number shown below should be used when placing map orders. The Community Number shown above should be used on insurance applications for the subject community.

MAP NUMBER
06037C1810F

EFFECTIVE DATE
SEPTEMBER 26, 2008

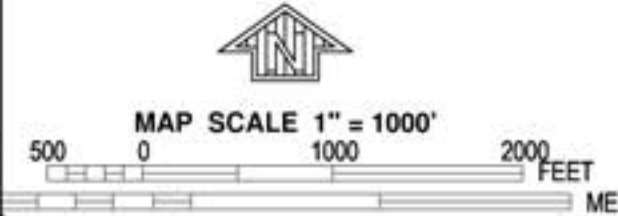
Federal Emergency Management Agency

This is an official copy of a portion of the above referenced flood map. It was extracted using F-MIT On-Line. This map does not reflect changes or amendments which may have been made subsequent to the date on the title block. For the latest product information about National Flood Insurance Program flood maps check the FEMA Flood Map Store at www.msc.fema.gov

This page intentionally left blank

6505000 FT 118°11'15.00" 33°56'15.00" 6510000 FT JOINS PANEL 1810 6515000 FT

WARNING: Area protected by Provisionally Accredited Levee. For explanation see the Notes to Users.



NFP PANEL 1820F


FIRM
FLOOD INSURANCE RATE MAP
LOS ANGELES COUNTY,
CALIFORNIA
AND INCORPORATED AREAS

PANEL 1820 OF 2350
(SEE MAP INDEX FOR FIRM PANEL LAYOUT)

CONTAINS:

COMMUNITY	NUMBER	PANEL SUFFIX
LOS ANGELES COUNTY	06043	1820 F
BELLFLOWER, CITY OF	06052	1820 F
COMPTON, CITY OF	06011	1820 F
DOWNEY, CITY OF	06040	1820 F
LONG BEACH, CITY OF	06036	1820 F
LYNWOOD, CITY OF	06035	1820 F
PARAMOUNT, CITY OF	06045	1820 F
SOUTH GATE, CITY OF	06043	1820 F

Notice to User: The Map Number shown below should be used when placing map orders, the Community Number shown above should be used on insurance applications for the subject community.

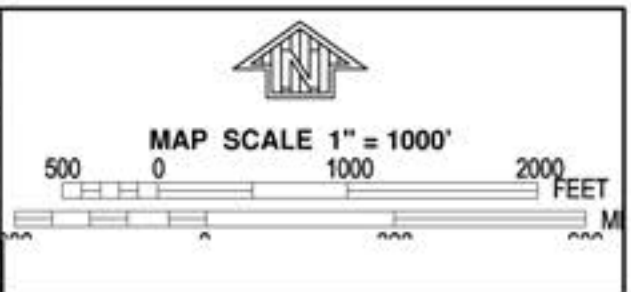
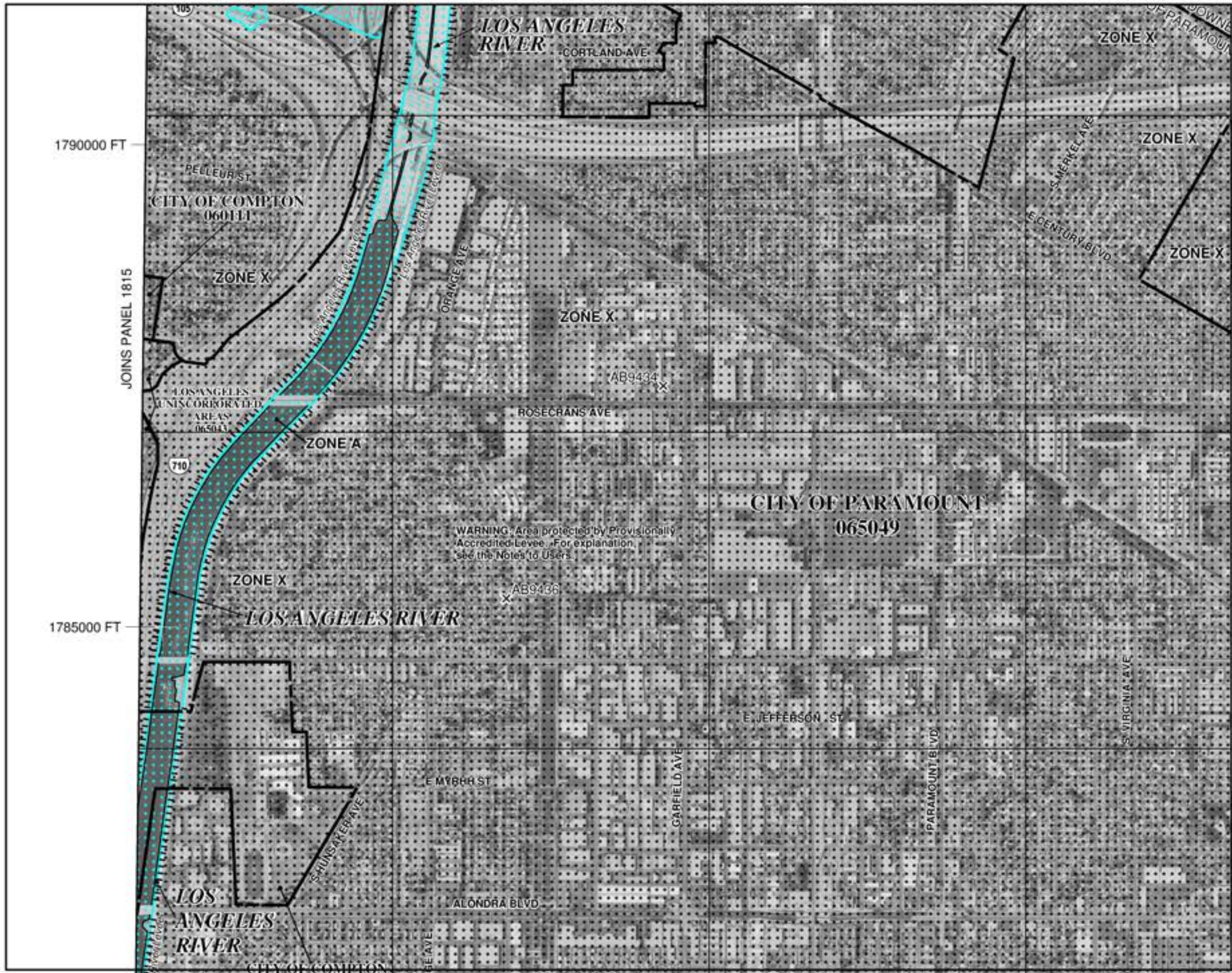
 **MAP NUMBER**
06037C1820F

EFFECTIVE DATE
SEPTEMBER 26, 2008

Federal Emergency Management Agency

This is an official copy of a portion of the above referenced flood map. It was extracted using F-MIT On-Line. This map does not reflect changes or amendments which may have been made subsequent to the date on the title block. For the latest product information about National Flood Insurance Program flood maps check the FEMA Flood Map Store at www.msc.fema.gov

This page intentionally left blank



PANEL 1820F

FIRM
FLOOD INSURANCE RATE MAP
LOS ANGELES COUNTY,
CALIFORNIA
AND INCORPORATED AREAS

PANEL 1820 OF 2350
 (SEE MAP INDEX FOR FIRM PANEL LAYOUT)

CONTAINS:

COMMUNITY	NUMBER	PANEL	SUFFIX
LOS ANGELES COUNTY	065043	1820	F
BELLFLOWER, CITY OF	064102	1820	F
COMPTON, CITY OF	061111	1820	F
DOWNY, CITY OF	062640	1820	F
LONG BEACH, CITY OF	061136	1820	F
LYNNWOOD, CITY OF	063035	1820	F
PARAMOUNT, CITY OF	065049	1820	F
SOUTH GATE, CITY OF	062163	1820	F

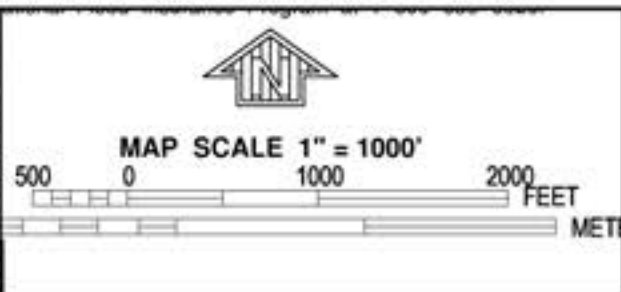
Notice to User: The Map Number shown below should be used when placing map orders. The Community Number shown above should be used on insurance applications for the subject community.

MAP NUMBER
06037C1820F
EFFECTIVE DATE
SEPTEMBER 26, 2008

Federal Emergency Management Agency

This is an official copy of a portion of the above referenced flood map. It was extracted using F-MIT On-Line. This map does not reflect changes or amendments which may have been made subsequent to the date on the title block. For the latest product information about National Flood Insurance Program flood maps check the FEMA Flood Map Store at www.msc.fema.gov

This page intentionally left blank



NFIP

PANEL 1820F

FIRM
FLOOD INSURANCE RATE MAP
LOS ANGELES COUNTY,
CALIFORNIA
AND INCORPORATED AREAS


PANEL 1820 OF 2350
 (SEE MAP INDEX FOR FIRM PANEL LAYOUT)

CONTAINS:

COMMUNITY	NUMBER	PANEL	SUFFIX
LOS ANGELES COUNTY	06043	1820	F
BELLFLOWER, CITY OF	06022	1820	F
COMPTON, CITY OF	06011	1820	F
DOWNEY, CITY OF	06045	1820	F
LONG BEACH, CITY OF	06036	1820	F
LYNWOOD, CITY OF	06035	1820	F
PARAMOUNT, CITY OF	06049	1820	F
SOUTH GATE, CITY OF	06048	1820	F

Notice to User: The Map Number shown below should be used when placing map orders, the Community Number shown above should be used on insurance applications for the subject community.

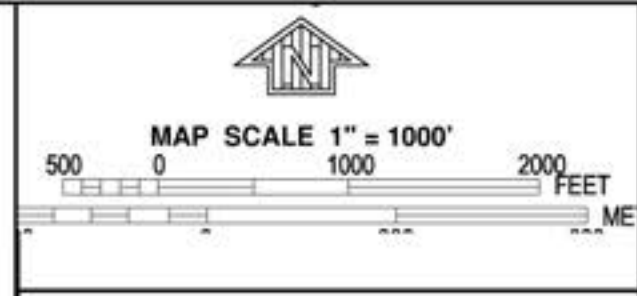
MAP NUMBER
06037C1820F
EFFECTIVE DATE
SEPTEMBER 26, 2008


Federal Emergency Management Agency

This is an official copy of a portion of the above referenced flood map. It was extracted using F-MIT On-Line. This map does not reflect changes or amendments which may have been made subsequent to the date on the title block. For the latest product information about National Flood Insurance Program flood maps check the FEMA Flood Map Store at www.msc.fema.gov

JOINS PANEL 1960

This page intentionally left blank



NATIONAL FLOOD INSURANCE PROGRAM

PANEL 1815F

FIRM
FLOOD INSURANCE RATE MAP
LOS ANGELES COUNTY,
CALIFORNIA
AND INCORPORATED AREAS

PANEL 1815 OF 2350
 (SEE MAP INDEX FOR FIRM PANEL LAYOUT)

CONTAINS:

COMMUNITY	NUMBER	PANEL SUFFIX
LOS ANGELES COUNTY	060043	1815 F
CARSON, CITY OF	060107	1815 F
COMPTON, CITY OF	060111	1815 F
LONG BEACH, CITY OF	060136	1815 F
LOS ANGELES, CITY OF	060137	1815 F
LYNWOOD, CITY OF	060630	1815 F
PARAMOUNT, CITY OF	065049	1815 F
SOUTH GATE, CITY OF	060183	1815 F

Notice to User: The Map Number shown below should be used when placing map orders. The Community Number shown above should be used on insurance applications for the subject community.

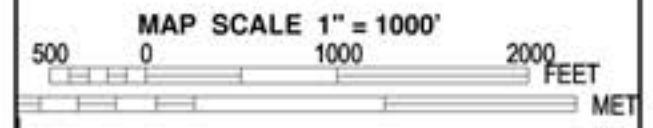
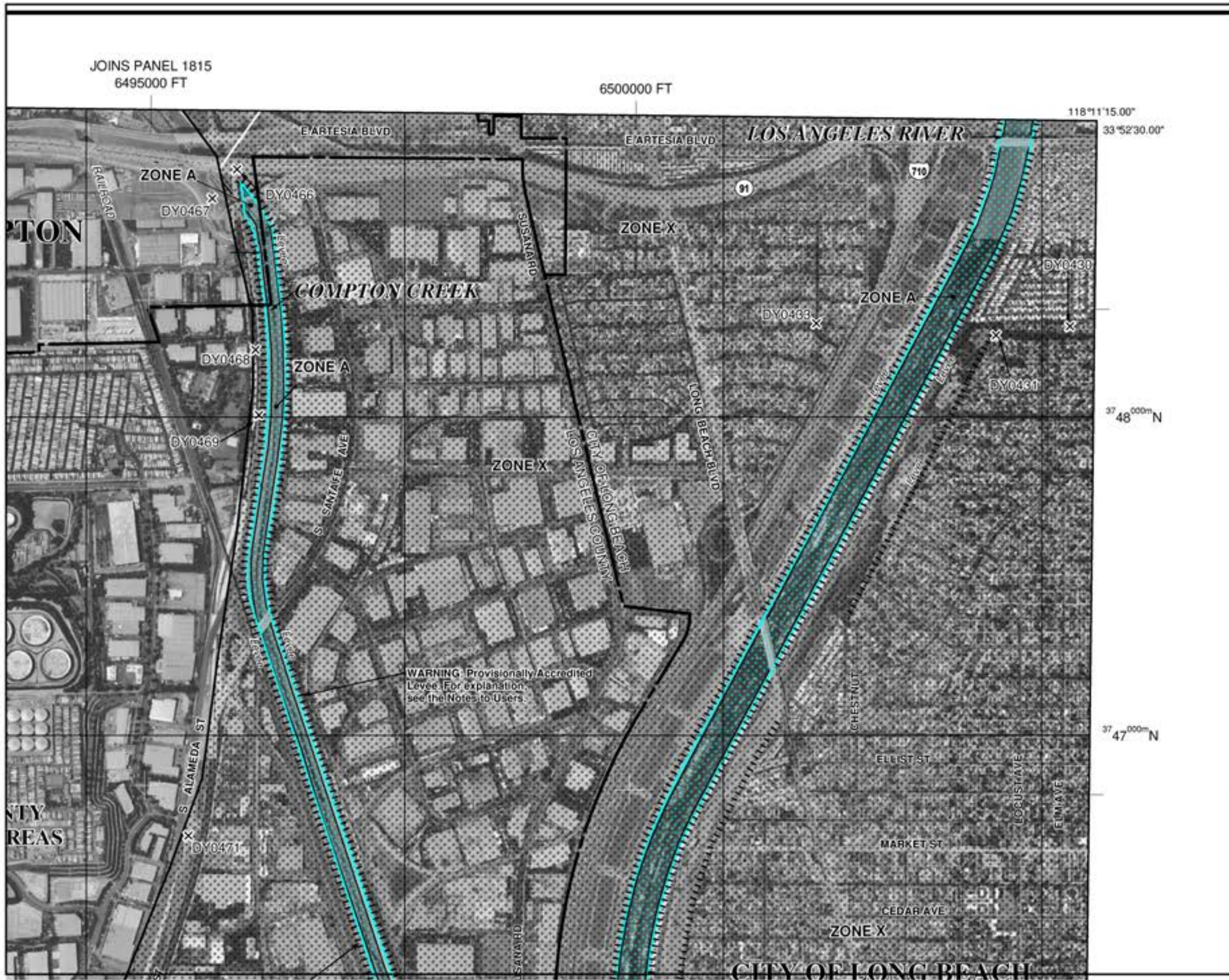
MAP NUMBER
06037C1815F

EFFECTIVE DATE
SEPTEMBER 26, 2008

Federal Emergency Management Agency

This is an official copy of a portion of the above referenced flood map. It was extracted using F-MIT On-Line. This map does not reflect changes or amendments which may have been made subsequent to the date on the title block. For the latest product information about National Flood Insurance Program flood maps check the FEMA Flood Map Store at www.msc.fema.gov

This page intentionally left blank



NFIP

PANEL 1955F

FIRM
FLOOD INSURANCE RATE MAP
LOS ANGELES COUNTY,
CALIFORNIA
AND INCORPORATED AREAS

PANEL 1955 OF 2350
(SEE MAP INDEX FOR FIRM PANEL LAYOUT)

CONTAINS:

COMMUNITY	NUMBER	PANEL	SUFFIX
LOS ANGELES COUNTY	06043	1955	F
CARSON, CITY OF	06017	1955	F
COMPTON, CITY OF	06011	1955	F
LONG BEACH, CITY OF	06038	1955	F
LOS ANGELES, CITY OF	06037	1955	F

Notice to User: The Map Number shown below should be used when placing map orders. The Community Number shown above should be used on insurance applications for the subject community.

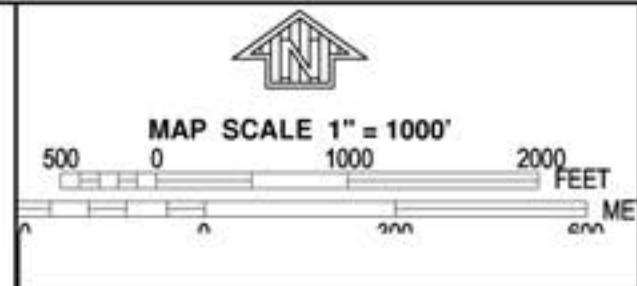
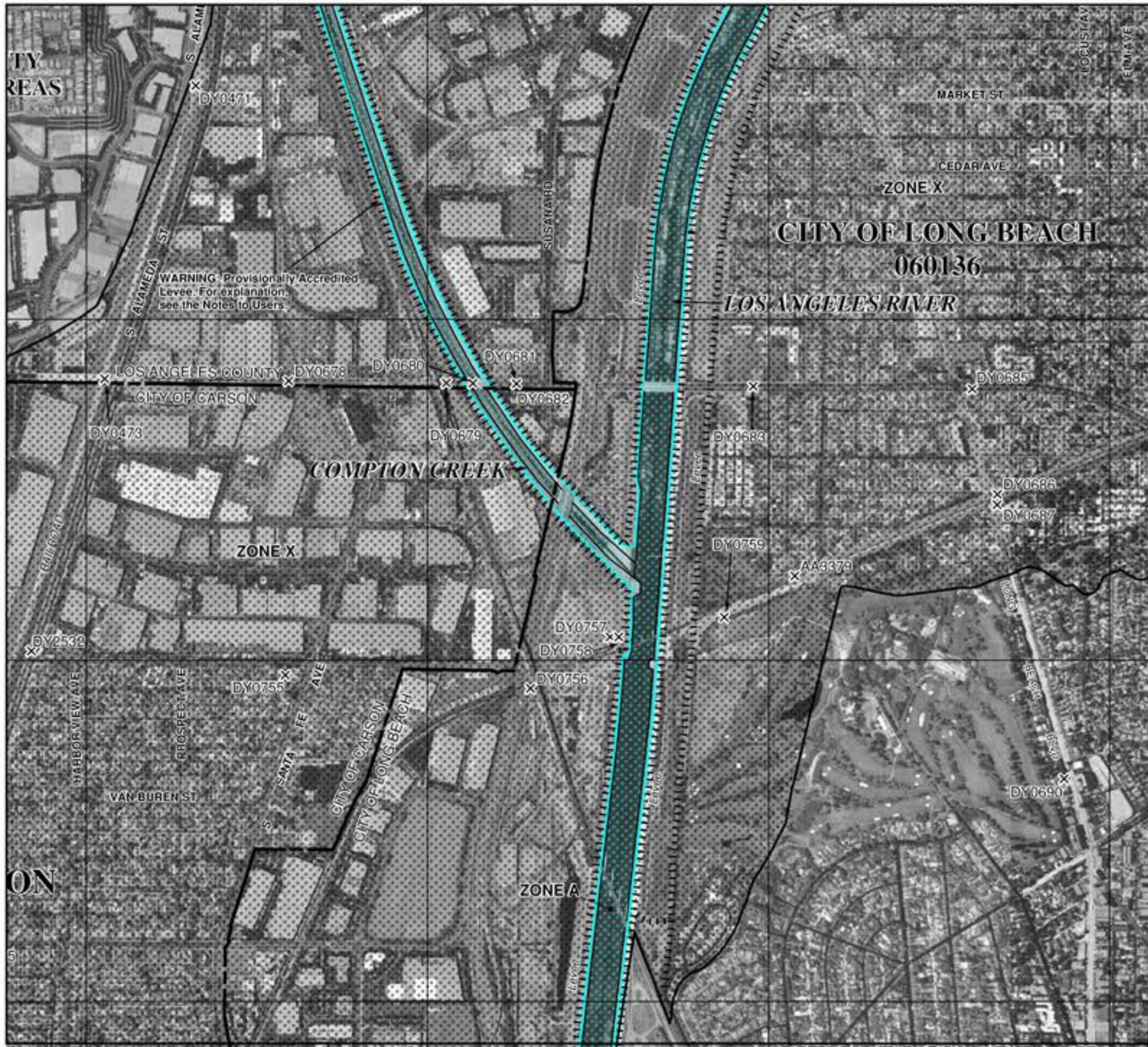
MAP NUMBER
06037C1955F

EFFECTIVE DATE
SEPTEMBER 26, 2008

Federal Emergency Management Agency

This is an official copy of a portion of the above referenced flood map. It was extracted using F-MIT On-Line. This map does not reflect changes or amendments which may have been made subsequent to the date on the title block. For the latest product information about National Flood Insurance Program flood maps check the FEMA Flood Map Store at www.msc.fema.gov

This page intentionally left blank



37 46 000m N
 JOINS PANEL 1960
 37 45 000m N
 37 44 000m N

NFIP PANEL 1955F

NATIONAL FLOOD INSURANCE PROGRAM


FIRM
FLOOD INSURANCE RATE MAP
LOS ANGELES COUNTY,
CALIFORNIA
AND INCORPORATED AREAS

PANEL 1955 OF 2350
 (SEE MAP INDEX FOR FIRM PANEL LAYOUT)

CONTAINS:

COMMUNITY	NUMBER	PANEL	SUFFIX
LOS ANGELES COUNTY	06043	1955	F
CARSON, CITY OF	06057	1955	F
COMPTON, CITY OF	06011	1955	F
LONG BEACH, CITY OF	06019	1955	F
LOS ANGELES, CITY OF	06017	1955	F

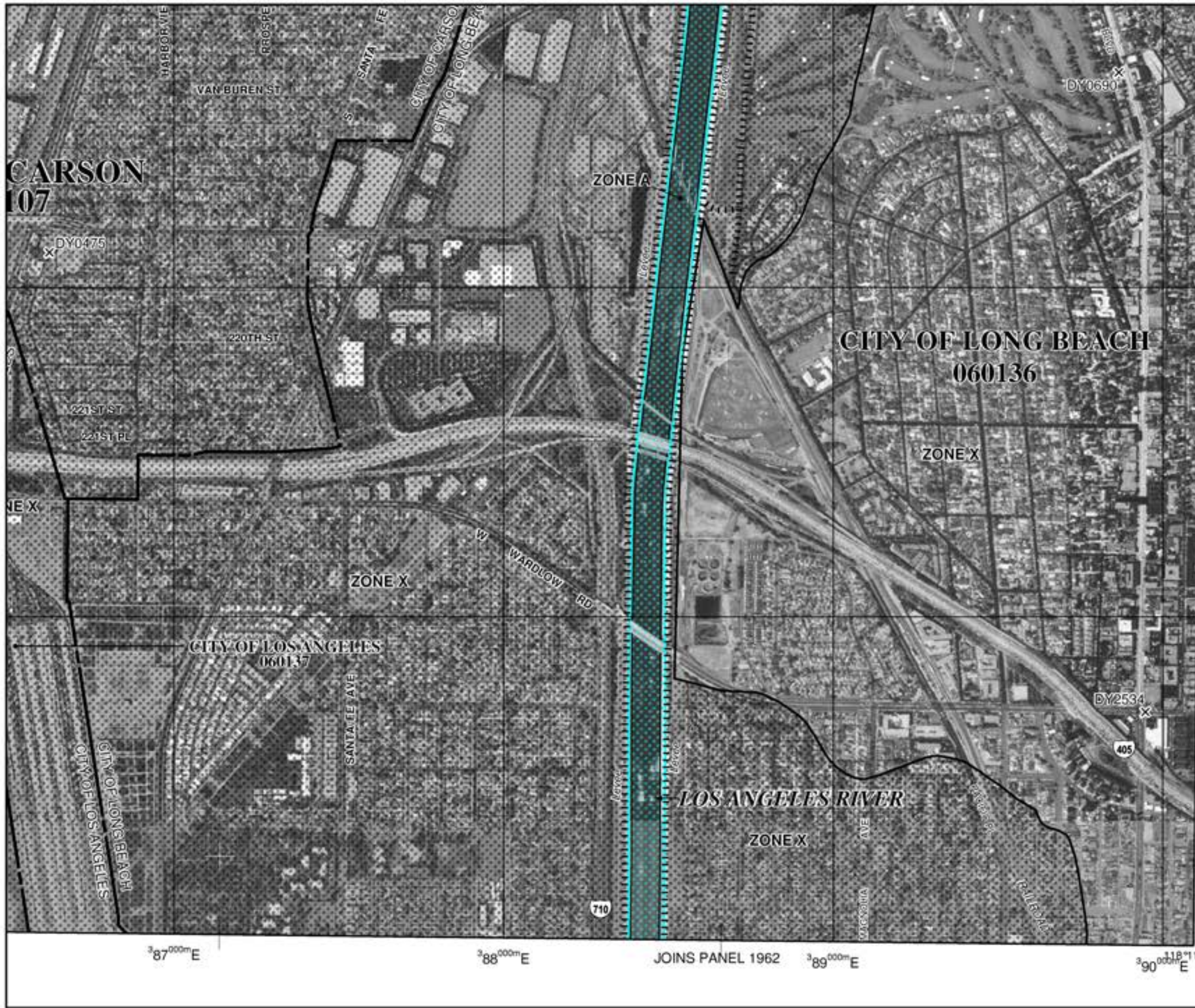
Notice to User: The Map Number shown below should be used when placing map orders, the Community Number shown above should be used on insurance applications for the subject community.

 **MAP NUMBER**
06037C1955F
EFFECTIVE DATE
SEPTEMBER 26, 2008

Federal Emergency Management Agency

This is an official copy of a portion of the above referenced flood map. It was extracted using F-MIT On-Line. This map does not reflect changes or amendments which may have been made subsequent to the date on the title block. For the latest product information about National Flood Insurance Program flood maps check the FEMA Flood Map Store at www.msc.fema.gov

This page intentionally left blank



National Flood Insurance Program at 1-800-638-6620.



MAP SCALE 1" = 1000'
 500 0 1000 2000 FEET

NATIONAL FLOOD INSURANCE PROGRAM

PANEL 1955F

FIRM
FLOOD INSURANCE RATE MAP
LOS ANGELES COUNTY,
CALIFORNIA
AND INCORPORATED AREAS

PANEL 1955 OF 2350
 (SEE MAP INDEX FOR FIRM PANEL LAYOUT)

CONTAINS:

COMMUNITY	NUMBER	PANEL	SUFFIX
LOS ANGELES COUNTY	06043	1955	F
CARSON, CITY OF	06017	1955	F
COMPTON, CITY OF	06011	1955	F
LONG BEACH, CITY OF	060136	1955	F
LOS ANGELES, CITY OF	060137	1955	F

Notice to User: The Map Number shown below should be used when placing map orders, the Community Number shown above should be used on insurance applications for the subject community.



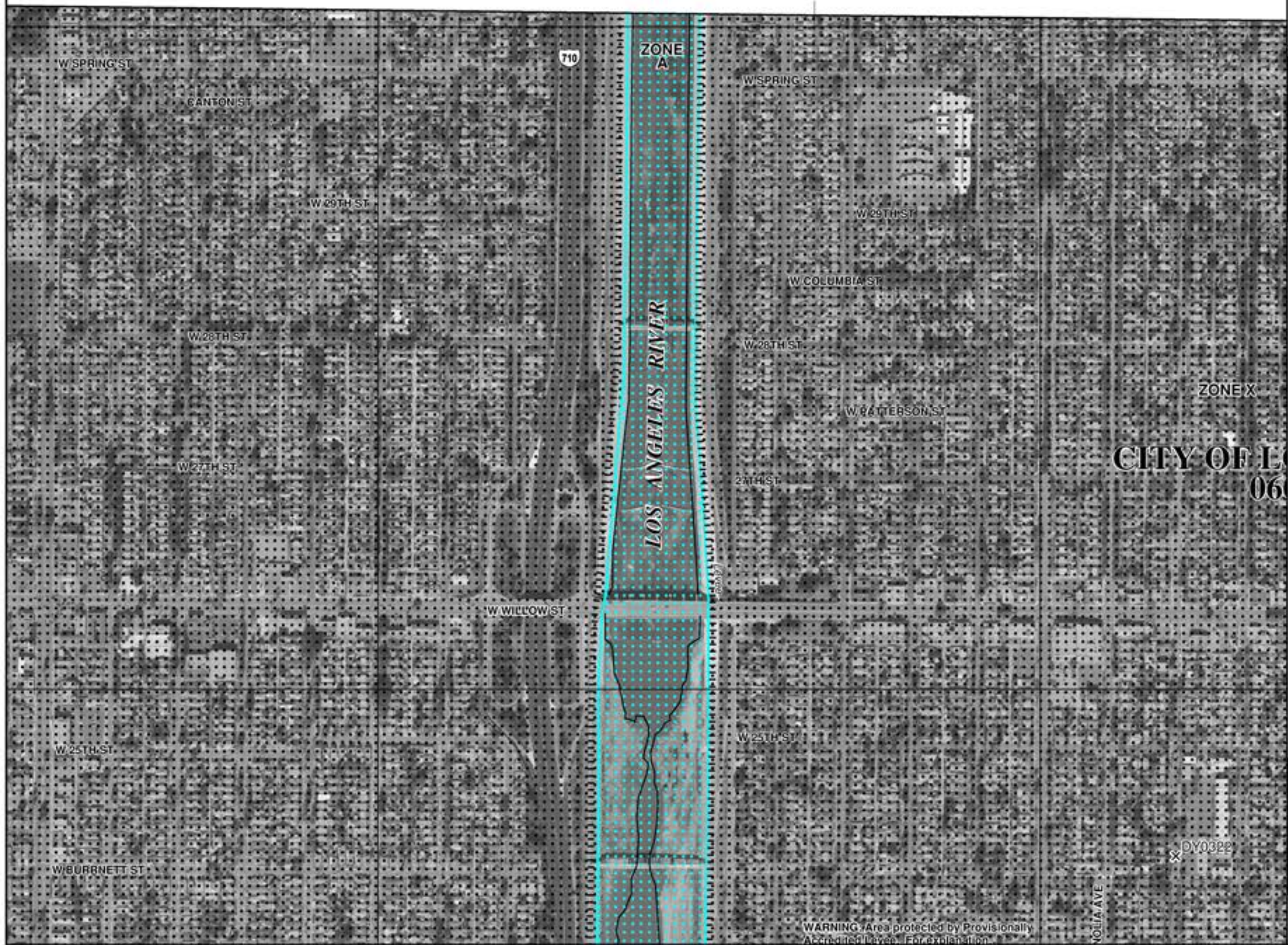
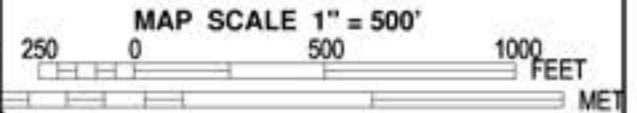
MAP NUMBER
 06037C1955F
 EFFECTIVE DATE
 SEPTEMBER 26, 2008

Federal Emergency Management Agency

This is an official copy of a portion of the above referenced flood map. It was extracted using F-MIT On-Line. This map does not reflect changes or amendments which may have been made subsequent to the date on the title block. For the latest product information about National Flood Insurance Program flood maps check the FEMA Flood Map Store at www.msc.fema.gov

This page intentionally left blank

JOINS PANEL 1955
6500000 FT



NFIP

PANEL 1962F


FIRM
FLOOD INSURANCE RATE MAP
LOS ANGELES COUNTY,
CALIFORNIA
AND INCORPORATED AREAS

PANEL 1962 OF 2350
(SEE MAP INDEX FOR FIRM PANEL LAYOUT)

CONTAINS:

COMMUNITY	NUMBER	PANEL	SUFFIX
LONG BEACH, CITY OF	80136	1962	F

Notice to User: The Map Number shown below should be used when placing map orders, the Community Number shown above should be used on insurance applications for the subject community.

 MAP NUMBER
06037C1962F

EFFECTIVE DATE
SEPTEMBER 26, 2008

Federal Emergency Management Agency

WARNING: Area protected by Provisionally
Approved Flood Insurance Study. For explanation

This is an official copy of a portion of the above referenced flood map. It was extracted using F-MIT On-Line. This map does not reflect changes or amendments which may have been made subsequent to the date on the title block. For the latest product information about National Flood Insurance Program flood maps check the FEMA Flood Map Store at www.msc.fema.gov

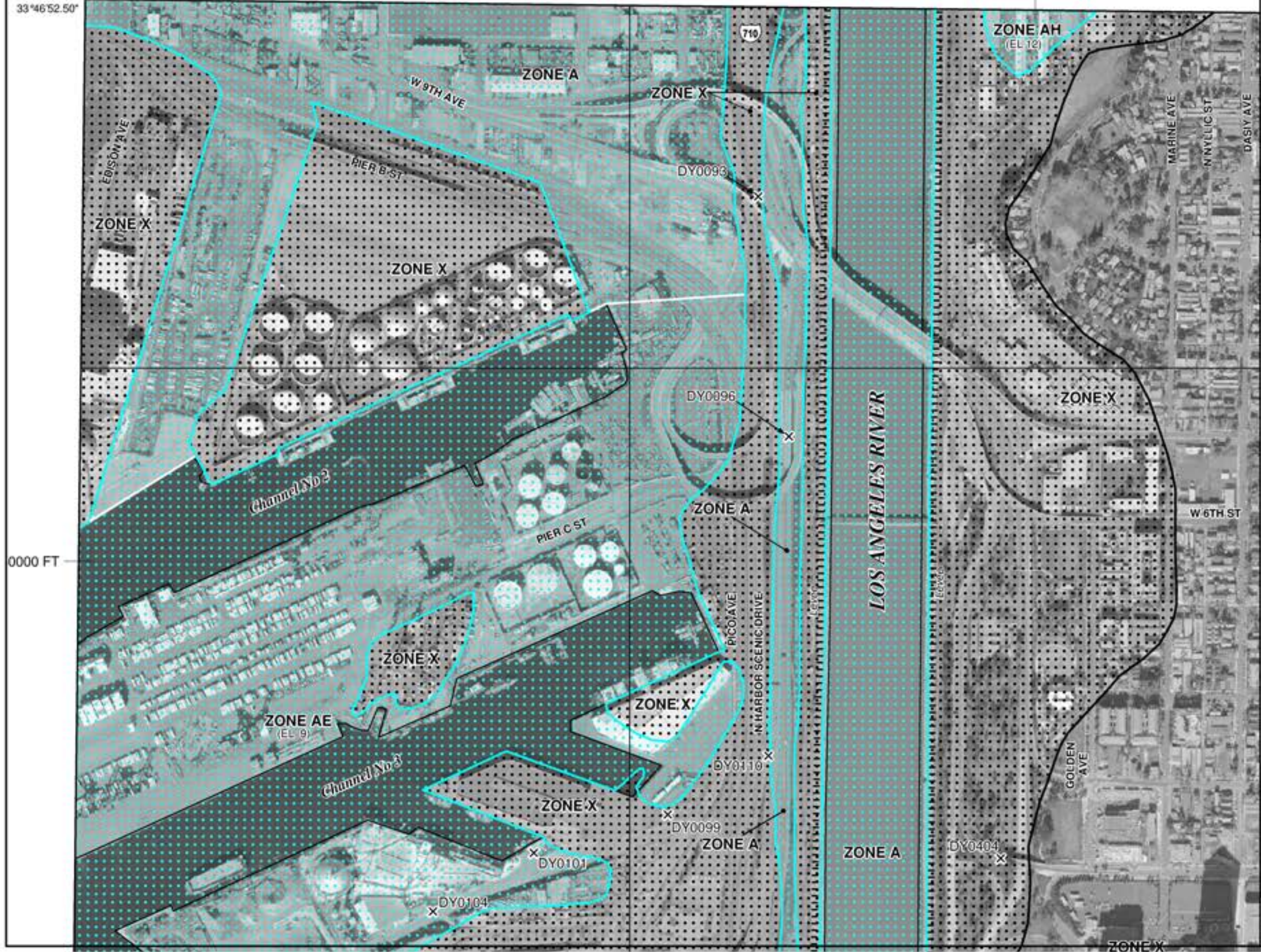
This page intentionally left blank

This page intentionally left blank

This page intentionally left blank

118°13'07.50"
33°46'52.50"

JOINS PANEL 1962
6500000 FT



NATIONAL FLOOD INSURANCE PROGRAM


PANEL 1964F

FIRM
FLOOD INSURANCE RATE MAP
LOS ANGELES COUNTY,
CALIFORNIA
AND INCORPORATED AREAS

PANEL 1964 OF 2350
(SEE MAP INDEX FOR FIRM PANEL LAYOUT)

CONTAINS:
COMMUNITY NUMBER PANEL SUFFIX
LONG BEACH CITY OF 06037C 1964 F

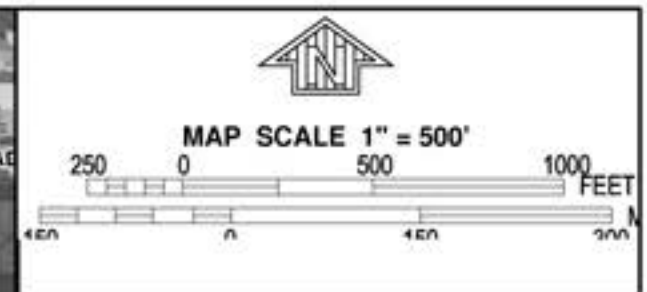
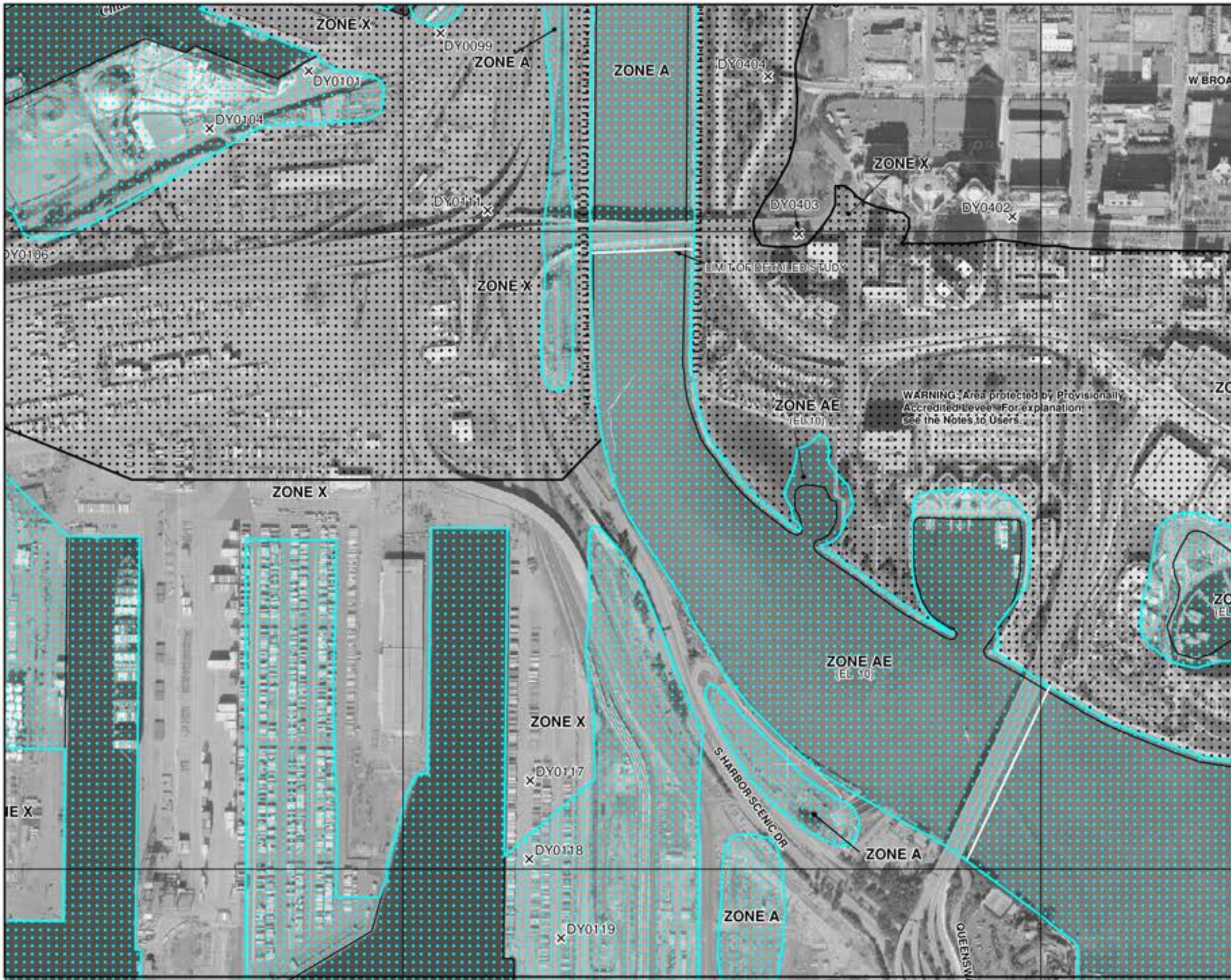
Notice to User: The Map Number shown below should be used when placing map orders. The Community Number shown above should be used on insurance applications for the subject community.

 **MAP NUMBER**
06037C1964F
EFFECTIVE DATE
SEPTEMBER 26, 2008

Federal Emergency Management Agency

This is an official copy of a portion of the above referenced flood map. It was extracted using F-MIT On-Line. This map does not reflect changes or amendments which may have been made subsequent to the date on the title block. For the latest product information about National Flood Insurance Program flood maps check the FEMA Flood Map Store at www.msc.fema.gov

This page intentionally left blank



NFIP PANEL 1964F

NATIONAL FLOOD INSURANCE PROGRAM

FIRM
FLOOD INSURANCE RATE MAP
LOS ANGELES COUNTY,
CALIFORNIA
AND INCORPORATED AREAS

PANEL 1964 OF 2350
 (SEE MAP INDEX FOR FIRM PANEL LAYOUT)

CONTAINS:

COMMUNITY	NUMBER	PANEL	SUFFIX
LONG BEACH, CITY OF	06037C	1964	F

Notice to User: The Map Number shown below should be used when placing map orders, the Community Number shown above should be used on insurance applications for the subject community.

MAP NUMBER
06037C1964F

EFFECTIVE DATE
SEPTEMBER 26, 2008

Federal Emergency Management Agency

This is an official copy of a portion of the above referenced flood map. It was extracted using F-MIT On-Line. This map does not reflect changes or amendments which may have been made subsequent to the date on the title block. For the latest product information about National Flood Insurance Program flood maps check the FEMA Flood Map Store at www.msc.fema.gov

This page intentionally left blank