



We're supporting thriving communities.

ALAMEDA STREET MOBILITY PROJECT STUDY REPORT/PROJECT DEVELOPMENT STUDY (PSR/PDS)



Housekeeping



Please be advised that this meeting is being recorded.



Staff will respond to questions after the presentation.

If joining by computer, enter your questions in the chat or 'raise your hand' to join queue.



If joining by phone, press *9 to 'raise your hand' to join queue. When your phone number is called, press *6 to unmute.

Agenda

- Introductions
- Project Overview
- Alameda Esplanade Overview
- Initial Alternatives Overview
- Community Engagement Update
- Next Steps
- Q&A



Introductions

Metro Team

Fabian Gallardo, *Transportation Planning Manager, Transit Oriented Communities*

Carlos Montez, *Senior Director, Complete Streets & Highways*

Celine Chen, *Senior Transportation Planner, Complete Streets & Highways*

Matthew Marquez, *Community Relations Manager, Community Relations*

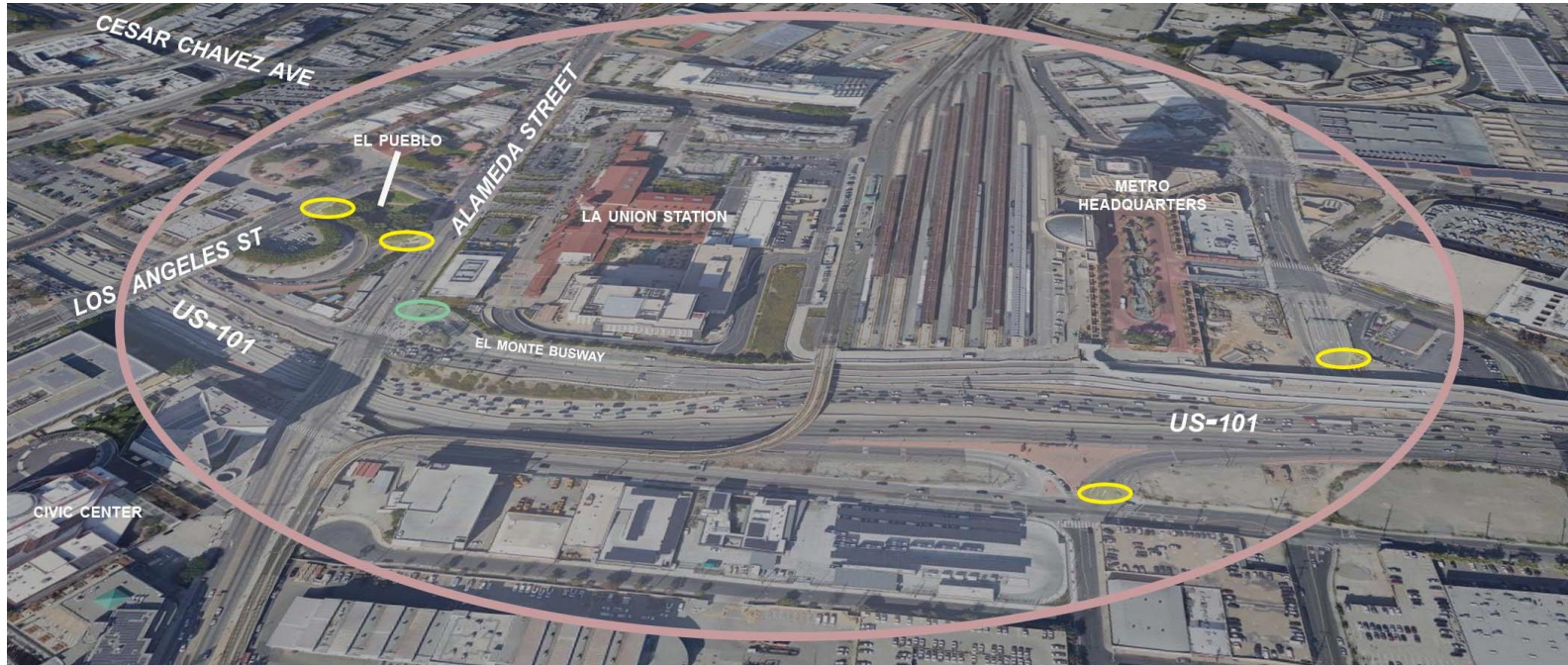
Elizabeth Andalon, *Community Relations Officer, Community Relations*

Jacobs Team

Steve Henderson, P.E., *Senior Project Manager*



Project Study Area



-  STUDY AREA
-  FREEWAY ACCESS POINT
-  EL MONTE BUSWAY



Project Goals

- Improve active transportation connections between Union Station and surrounding communities, including the nearby Little Tokyo/Arts District Station
- Create an accessible, comfortable and safe facility for walking, biking and rolling with a focus on equity
- Improve multi-modal safety, movement and operations for all modes around the El Monte Busway and US-101 on and off-ramps
- Improve mobility and safety of the local roadway and freeway operations
- Enhance transit accessibility and planned multimodal access



Caltrans Project Development Process

We are here

1. Project Initiation Document (PSR-PDS)

2. Project Approval & Environmental Document (PA&ED)

3. Plans, Specifications & Estimates (PS&E)

4. Construction

Alameda Esplanade: Eastside Access Improvements

- Will create a pedestrian and bicycle esplanade on Alameda Street south of US-101, near the future Metro Little Tokyo/Arts District Station.
- **Status:** Under construction
- **Anticipated completion:** 2023



Alameda Esplanade: LAUS Forecourt and Esplanade

- Will create a pedestrian and bicycle esplanade on Alameda Street along the Union Station frontage, north of US-101.
- **Status:** Environmental clearance completed



Community Engagement

- **CBO-led engagement process**

- LA Walks, Little Tokyo Community Council, La Plaza de Cultura y Artes

- **Public Survey**

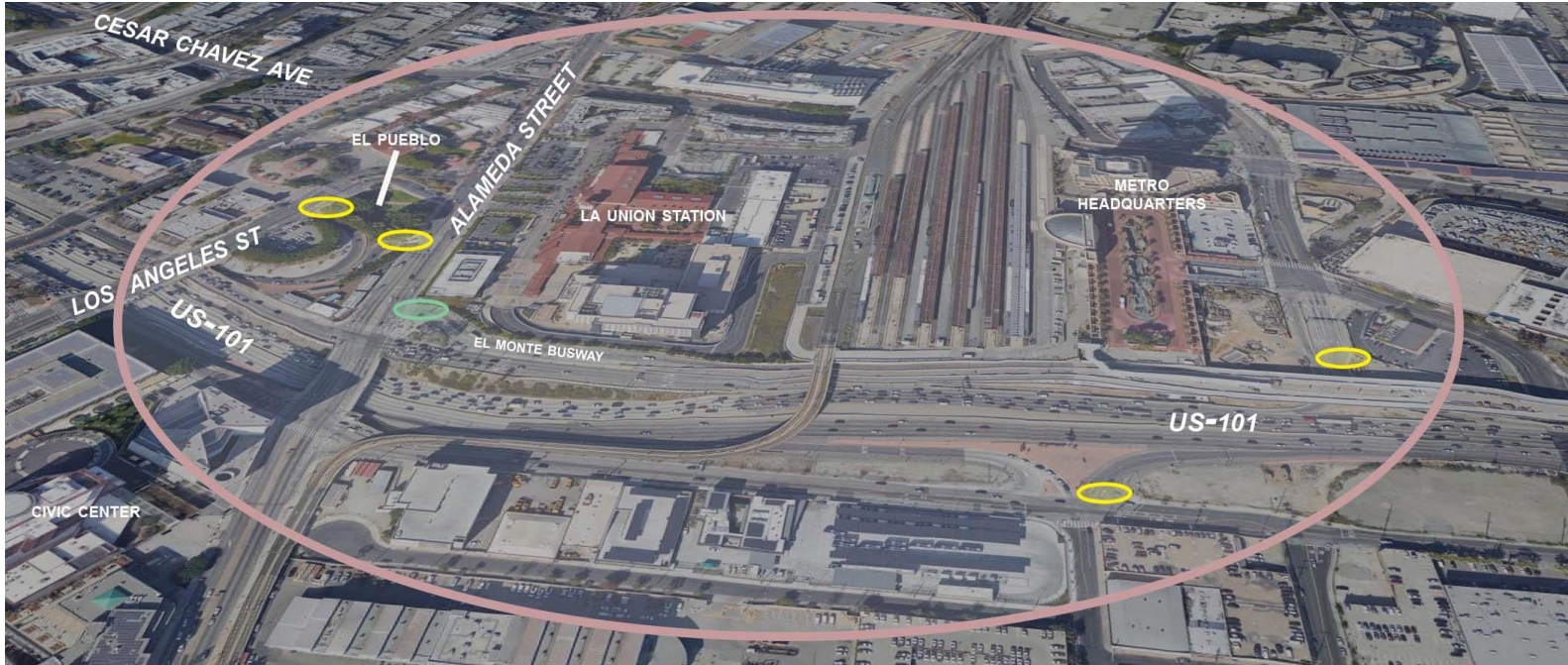
- Gather input regarding the project area and surrounding destinations to inform project purpose and need statement

- **Project Walk**

- Gather feedback on how to improve the corridor and ground truth draft alternatives
- Assess existing conditions along the corridor (sights, sounds, smells)



Project Study Area

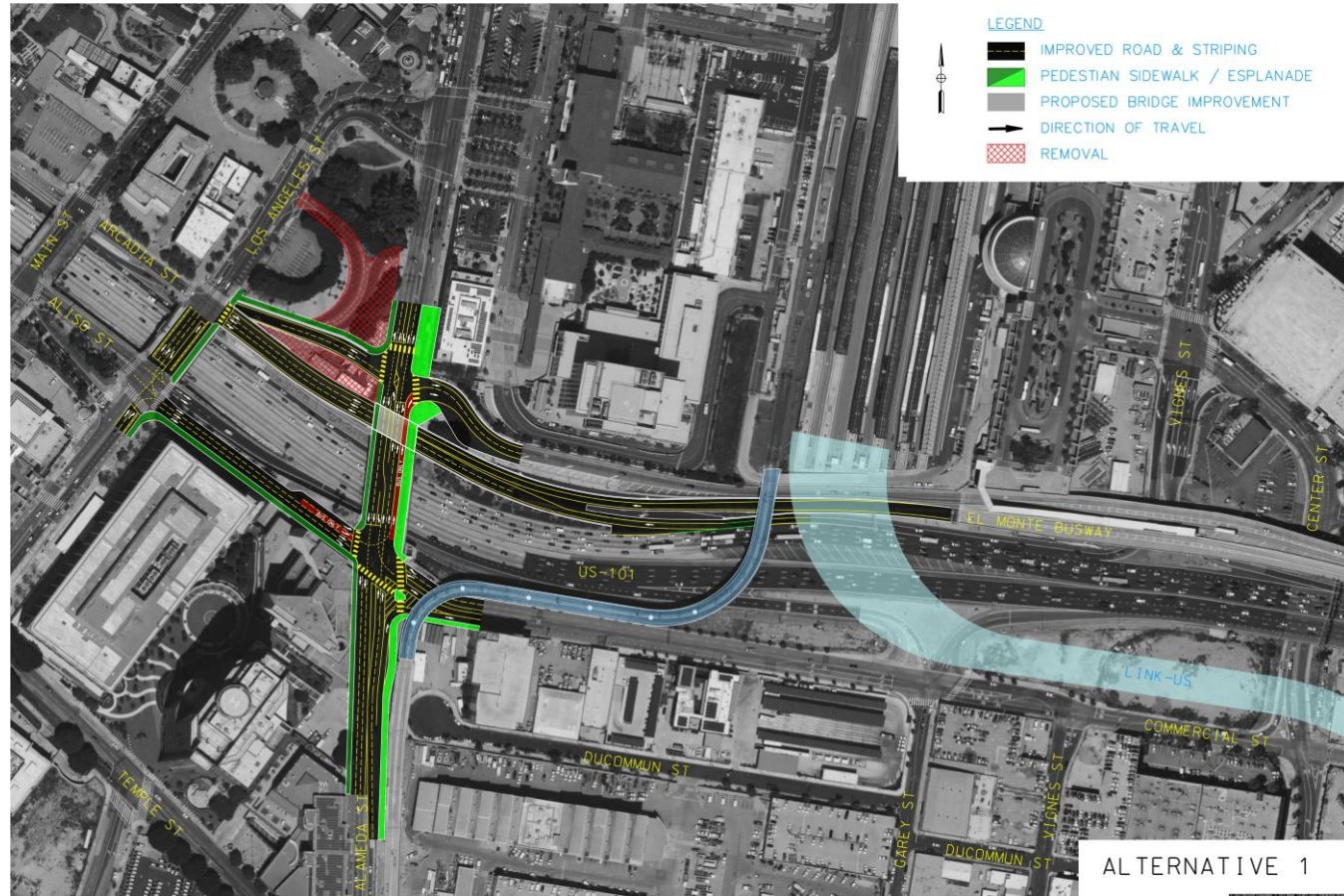


-  STUDY AREA
-  FREEWAY ACCESS POINT
-  EL MONTE BUSWAY



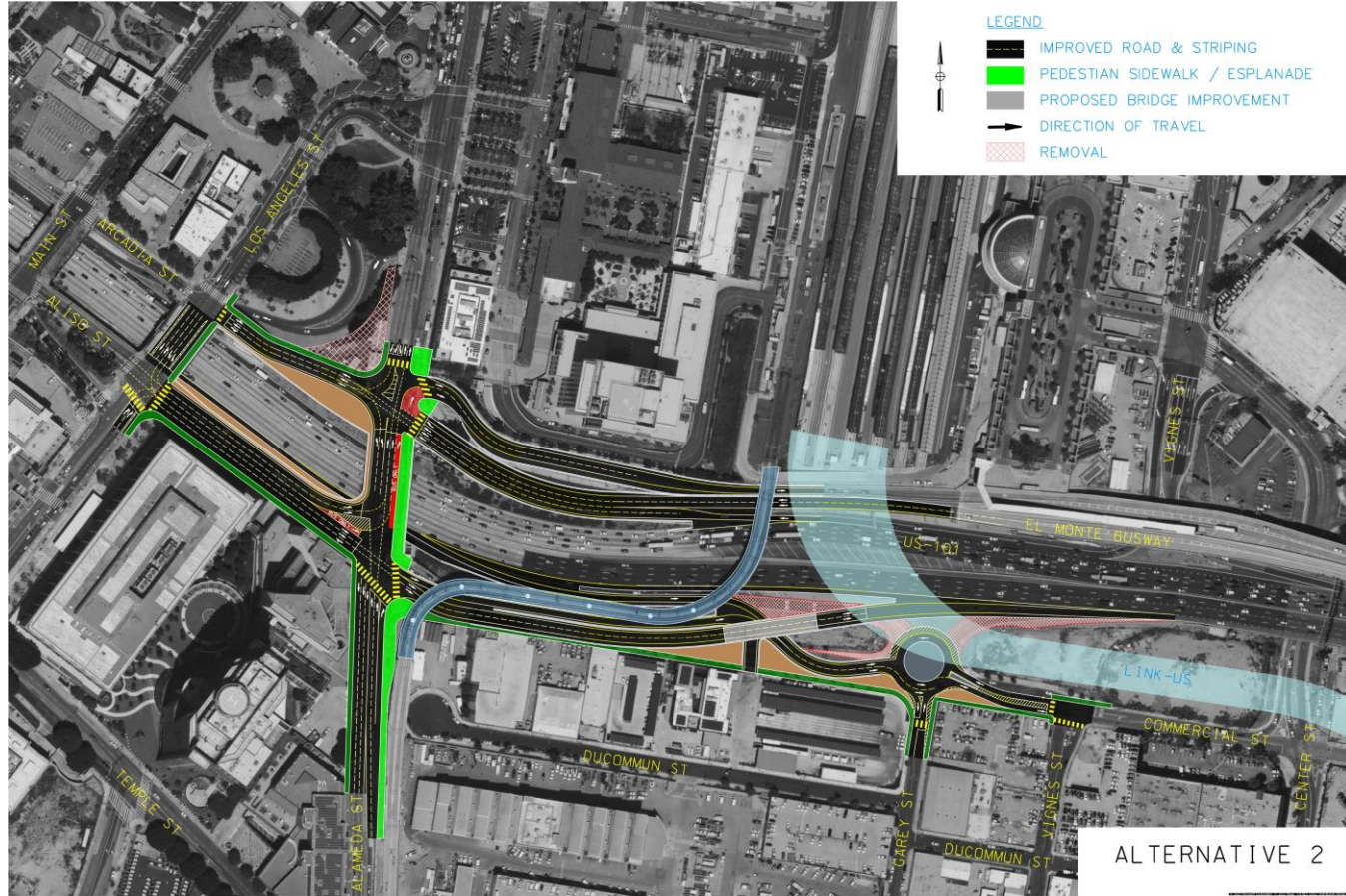
Alternative 1

- Grade separates WB Alameda St off-ramp under Alameda St
- Widens easterly sidewalk along the Alameda St/US-101 bridge
- Maintains westerly sidewalk along Alameda St/US-101 bridge
- Closes the westbound US-101 freeway onramps at Los Angeles St



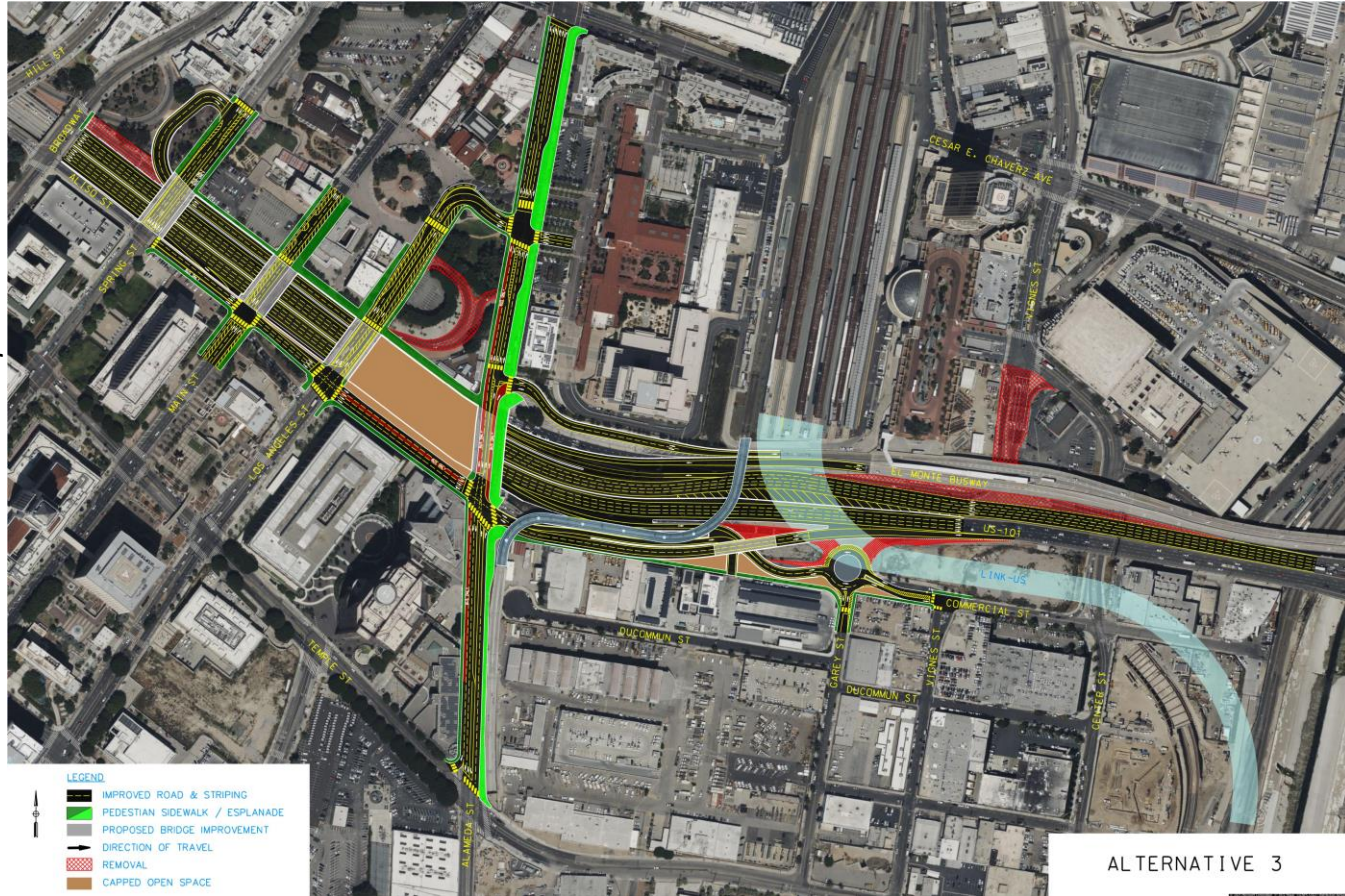
Alternative 2

- Revises traffic flow at Los Angeles St and Alameda St bridge overcrossings to one-way to improve pedestrian safety and eliminate left turn conflicts
- Widens easterly sidewalk along the Alameda St/US-101 bridge
- Eliminates westerly sidewalk along Alameda St/US-101 bridge
- Consolidation of ExpressLane/Alameda St/ WB US-101 off-ramp to single intersection.



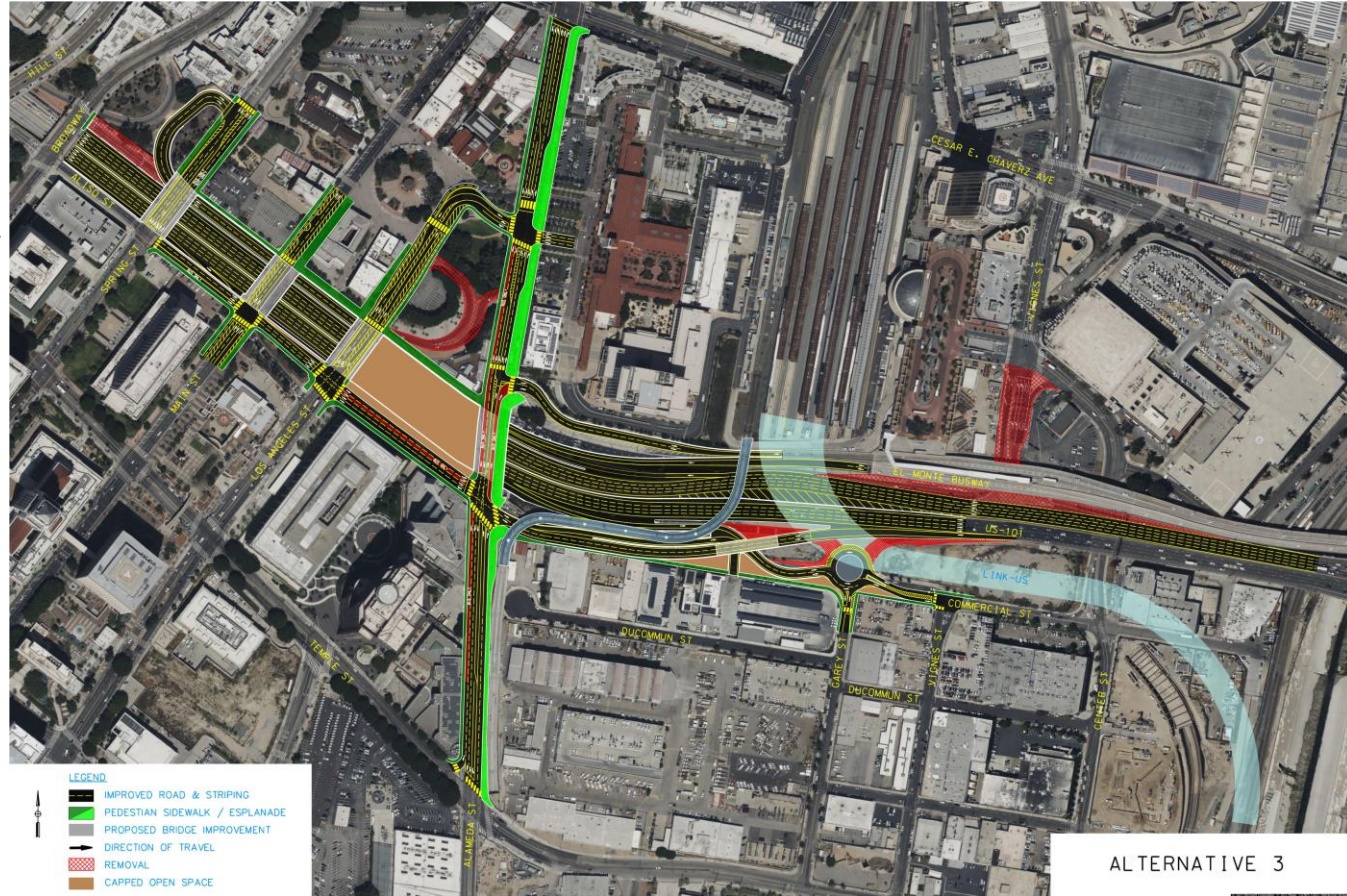
Alternative 3

- Moves WB US-101 off-ramp at Alameda St to Spring St
- Replaces Arcadia St with pedestrian walkway with no vehicular access between Alameda St and Main St
- Caps US-101 between Los Angeles St and Alameda St for future open space opportunity
- Widens easterly sidewalk along the Alameda St/US-101 bridge
- Widens the westerly sidewalk along the Alameda St/US-101 bridge



Alternative 3 (Continued)

- Creates a northbound and southbound bus only lane on Alameda St between Aliso St and Los Angeles St
- Closes the westbound US-101 freeway ramps at Los Angeles St, Alameda St, and Vignes St.
- Reconfigures the eastbound US-101 ramps along Commercial St.



Next Steps

- **Ongoing through early 2024:** technical analysis to inform Project Study Report
- **Early 2024:** Caltrans approval of Project Study Report

Next Phase: Environmental Clearance

- Discussions will be ongoing between Metro, Caltrans and City of LA to determine the entity that will lead environmental review of the project

Stay Connected.



centrallaprojects@metro.net



213.418.3424



metro.net/alamedastreetmobility