

Community Engagement Working Group Meeting #2

---

# Meeting Materials: CLC Overview and Guiding Questions

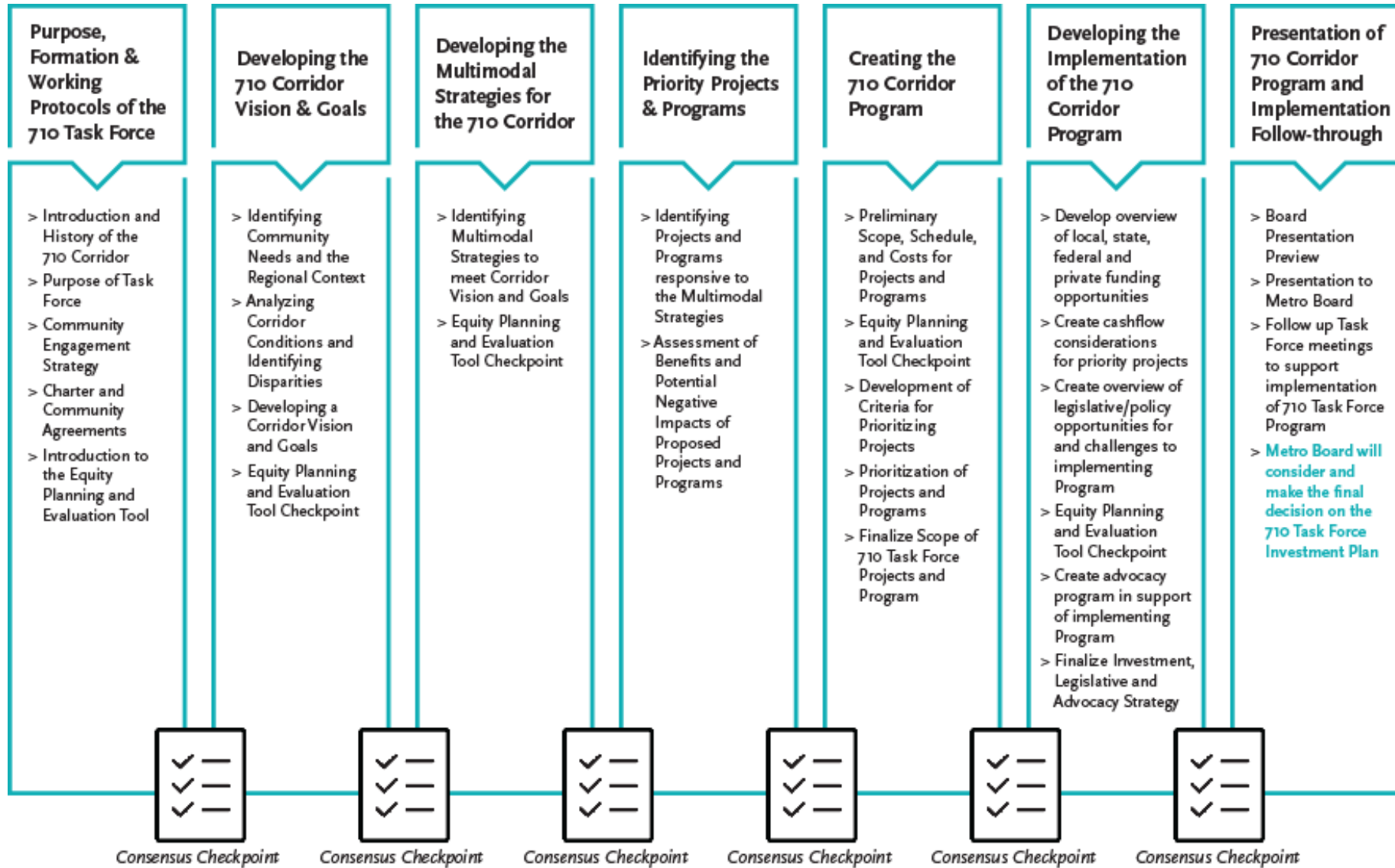
*Please review this presentation in preparation for our working group meeting.*

# Contents

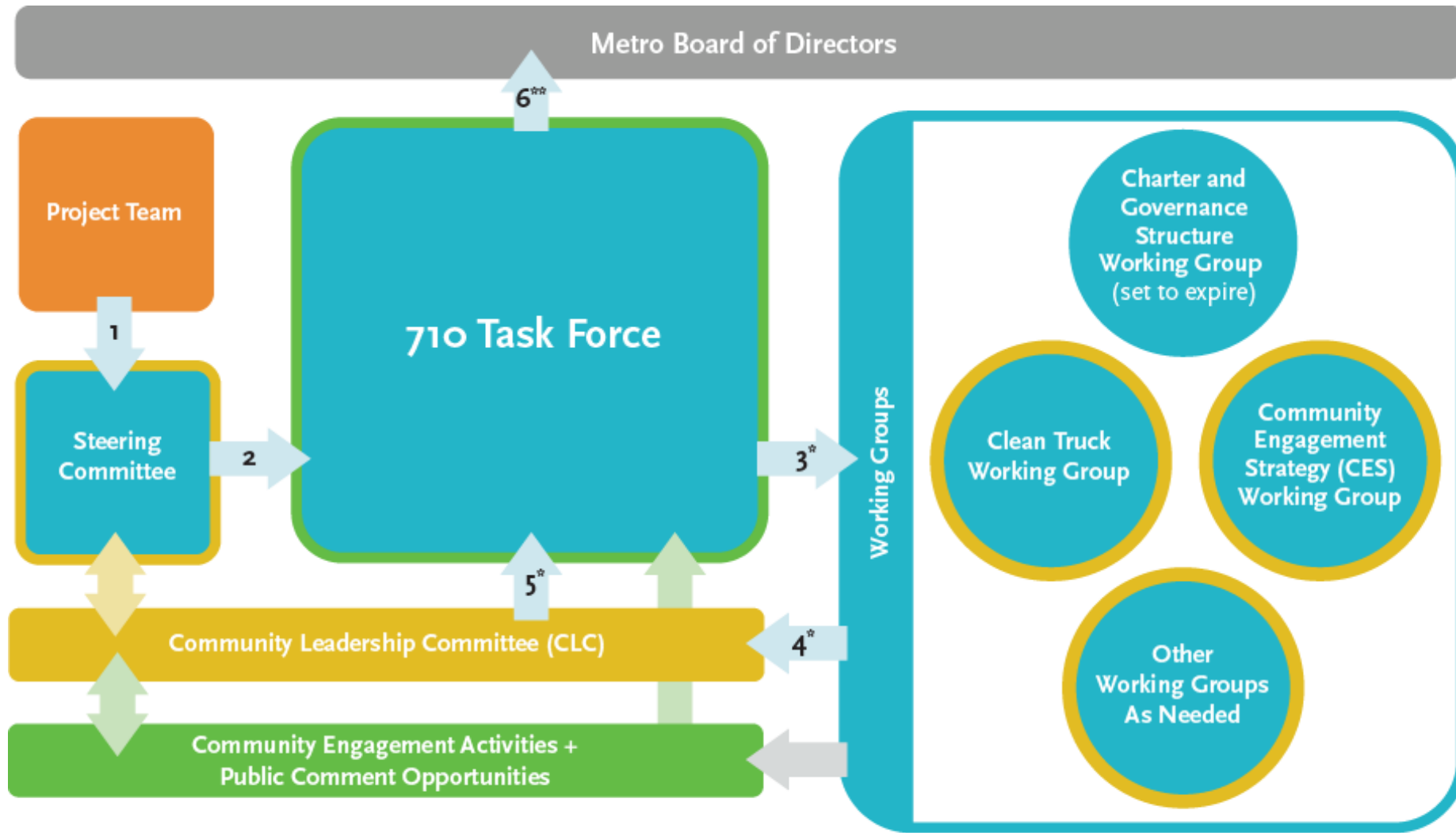
These are the key materials that will be discussed during the Community Engagement Working Group Meeting.

- > [710 Task Force Charter Work Plan](#) – This diagram shows **key phases and consensus checkpoints** for the 710 Task Force.
- > [710 Task Force Process](#) – This chart shows the **flow of information** and participation needed in each phase of the 710 Task Force Work Plan.
- > [Types of 710 Task Force Meetings](#) – This table shows **how and where we are working together**. Each type of meeting plays an important part of developing the recommendations that will be sent to the LA Metro Board for consideration.
- > [Community Leadership Committee \(CLC\): Application](#) – This slide outlines **what is currently requested in the application** to be a CLC member. We need your feedback to finalize the selection criteria and organization of the CLC membership.
- > [Community Leadership Committee: Selection Process](#) – This graphic shows the **different steps of the CLC selection process**. The timeline dates highlighted in yellow are estimates. We need your feedback to finalize this process and timeline.
- > [I-710 South Corridor Study Area](#) – The map on this slide shows the **cities and communities directly adjacent to the I-710 South**.
- > [Guiding Questions](#) – The questions on this slide are intended as a starting point for our discussion at the Working Group Meeting. We need your feedback to determine the final organization and membership of the CLC.
- > [Can't attend the meeting? Reach out to us!](#) – Please use the contact information provided in this slide to share your feedback and questions.

# Charter Work Plan



# 710 Task Force: Process for Each Work Plan Phase



\*Steps 1-5 depict normal process for proposals. If needed, Steps 3-5 will be repeated.

Refer to Decision-Making Process chart for an explanation of decision points.

\*\*Step 6: Metro Board will consider and make the final decision on the 710 Task Force Investment Plan.

## LEGEND

Yellow - CLC Participation

Green - Public Participation

# Types of 710 Task Force Meetings

## 710 Task Force Meetings

- **Frequency:** Monthly (typically on the second Monday evening of the month)
- **Purpose:** Discuss and come to consensus on recommendations
- **Members:** Up to 50 representatives from a broad cross-section of stakeholders
- **Format:** Public Webinar (per Metro COVID restrictions)

## Steering Committee Meetings

- **Frequency:** Monthly, two weeks before 710 Task Force Meetings
- **Purpose:** Plan meetings and support CLC and 710 Task Force
- **Members:** Three Existing Task Force members and Two CLC Members
- **Format:** Internal Teams or Zoom Meetings

## Community Leadership Committee (CLC) Meetings

- **Frequency:** Monthly, one week before 710 Task Force Meetings
- **Purpose:** Advise on 710 Task Force proposals and recommendations
- **Members:** Up to 10 Residents and Workers from the Project Area
- **Format:** Internal Teams or Zoom Meetings

## Task Force Working Group Meetings

- **Frequency:** As-needed
- **Purpose:** Research and analyze specific issues to develop proposals and recommendations for consideration by the 710 Task Force and CLC
- **Members:** Up to 20 710 Task Force Members and CLC Members
- **Format:** Internal Teams or Zoom Meetings

## Listening Sessions and Other Community Meetings

- **Frequency:** Regularly scheduled throughout the process in alignment with project phases
- **Purpose:** Share updates and hear directly from community members
- **Audience:** Stakeholders along the I-710 South Corridor
- **Format:** To be determined

# Community Leadership Committee: Application

## Candidate Information Requested

- > Residence or work address (or major cross streets)
- > Demographic information (i.e., age, race/ethnicity, gender, sexual orientation, and primary language spoken)
- > Areas/topics of particular interest
- > Primary mode of travel (Driving alone, carpool, rail, bus, bike, paratransit, walking, or other)
- > Affiliation with CBOs, businesses, government agencies, or civic or non-profit organizations
- > Information on community involvement/engagement activities
- > Preferred meeting times (provide various 2-hour time slots)
- > Preferred language

## Basic Qualifications

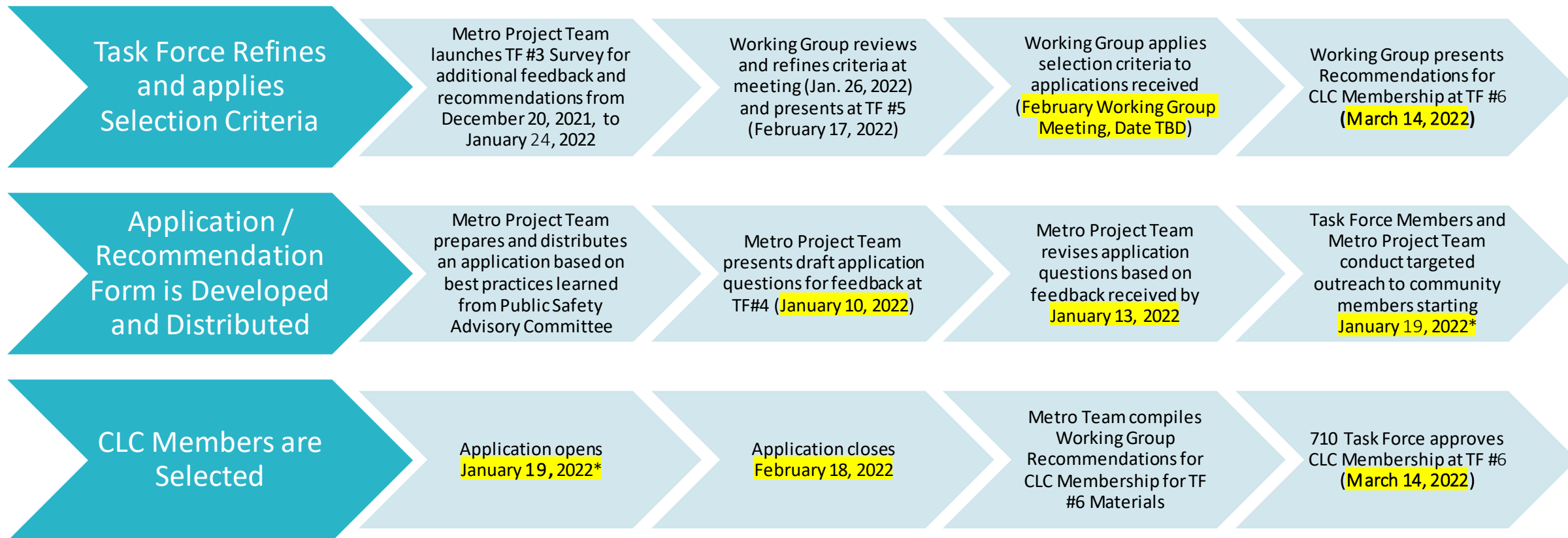
- > Must live or work within the I-710 South Corridor Study Area
- > Must not be a current 710 Task Force Member

## Preferred Qualifications

- > Candidates that can demonstrate first-hand knowledge of community issues, history, and concerns
- > Candidates that are engaged and connected to broader community networks and engagement channels

# Community Leadership Committee: Status Update

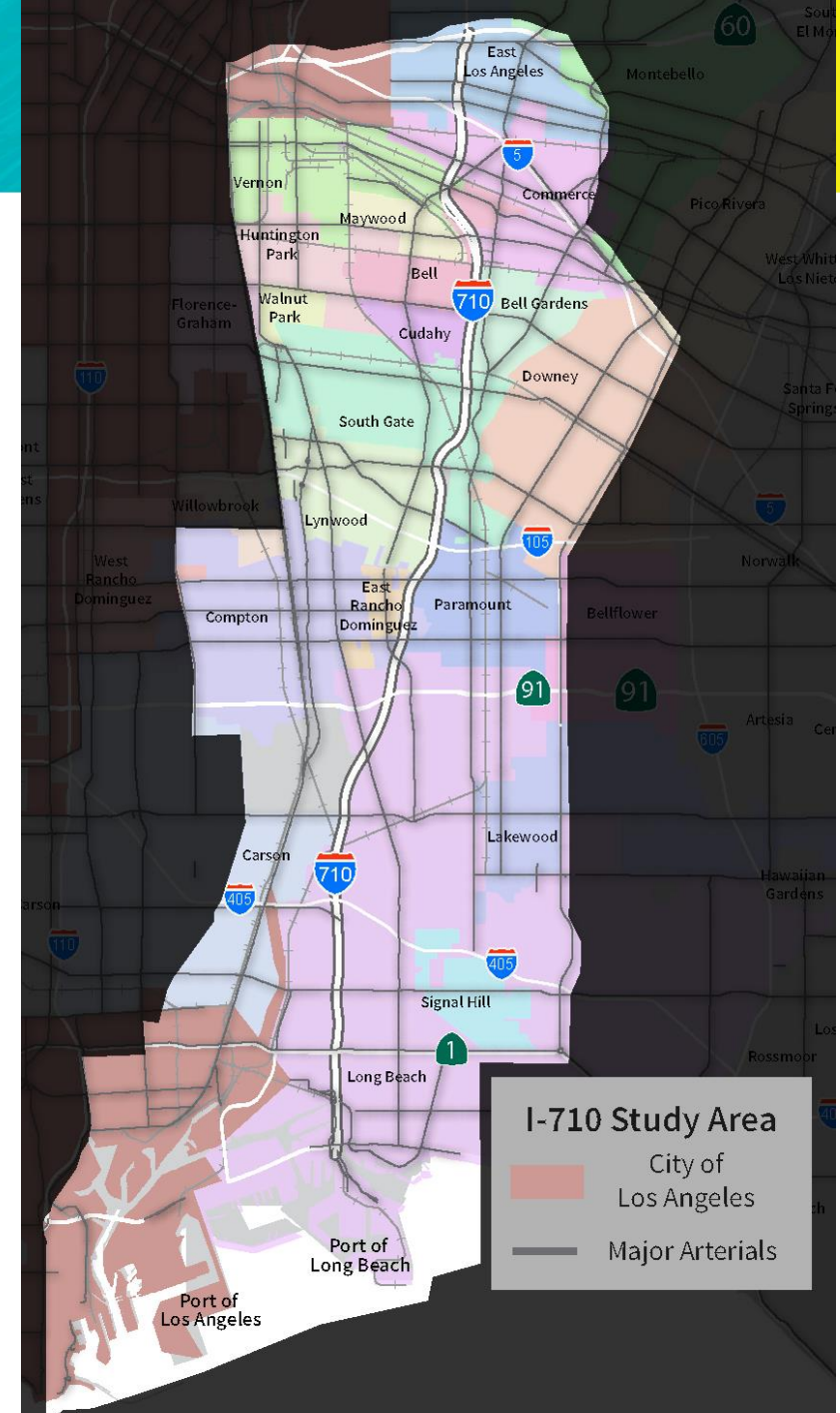
We are moving three key areas of work forward for the CLC Formation:



\* Date was previously January 18, 2022

# I-710 South Corridor Study Area

- > The I-710 South Corridor Study Area includes many jurisdictions and unincorporated communities.
- > While the map shows the immediate cities and neighboring jurisdictions, the I-710 South Corridor plays a critical role in the region's goods movement and mobility strategies. Many people live in these neighborhoods and many use the I-710 and connecting roads and highways to get to and from their homes, places of work, schools, and other key destinations.



# Guiding Questions for Working Group Meeting

- > What additional member qualifications should be included?
- > What else should be considered in the selection of the CLC members?
- > How should we consider geographic representation in the total membership? How do we ensure a good distribution of people in the CLC?
- > How else can we market the CLC application between now and the deadline of February 18?
- > At a minimum, how many reviewers should we have for the selection process?

# Can't attend the meeting? Reach out to us!

Michael Cano, *Deputy Executive Officer,*  
*Countywide Planning & Development*  
Metro

One Gateway Plaza, MS 99-13-1  
Los Angeles, CA 90012

213.922.4710

*710corridor@metro.net*

*metro.net/projects/i-710-corridor*

*@metrolosangeles*

*losangelesmetro*