

Welcome!

LAX / Metro Transit Center Station
Construction Update Meeting

September 25, 2024



Metro



Construction Update Meeting

LAX / METRO TRANSIT CENTER STATION PROJECT

Housekeeping

Today's meeting is being recorded.
The recording and PDF will be posted on metro.net.



Attendee cameras are off and microphones are muted.



During the meeting, questions can be submitted using the Q&A icon.

Code of Conduct

Metro is committed to ensuring that all participants can fairly and clearly share ideas, comments and concerns about this project. To provide a safe and equitable process, we are asking for your help.

During this meeting, please:

- > **Respect the format of the meeting and allow everyone an opportunity to comment**



TAP for Employers

TAP makes it easy and affordable to get to work. Your employees will avoid stressful traffic and save money. They will start the work day focused and productive. It's a win for employers and an excellent benefit for employees!

Here's How it Works

TAP cards are provided to your employees. Your company assigns an administrator who can log in to our website to add and remove employees, add fare to cards and place orders on your schedule.

Contact Us to Learn More



Call

866-TAPTOGO (866-827-8646)

Hours:

Monday - Friday: 8am - 4:30pm

Closed Saturday - Sunday



Email

AB@taptogo.net



A yellow speech bubble with rounded corners and a tail pointing towards the bottom right, set against a solid blue background. The words "THANK YOU" are cut out of the bubble in a bold, blue, sans-serif font.

THANK YOU

Project Team

Program Management

Rafie Zamani

Chris Sheaffer

Construction Relations

Brett Roberts

Art & Design

Zapporah Yamamoto

C and K Line Operations Change

Joe Forgiarini

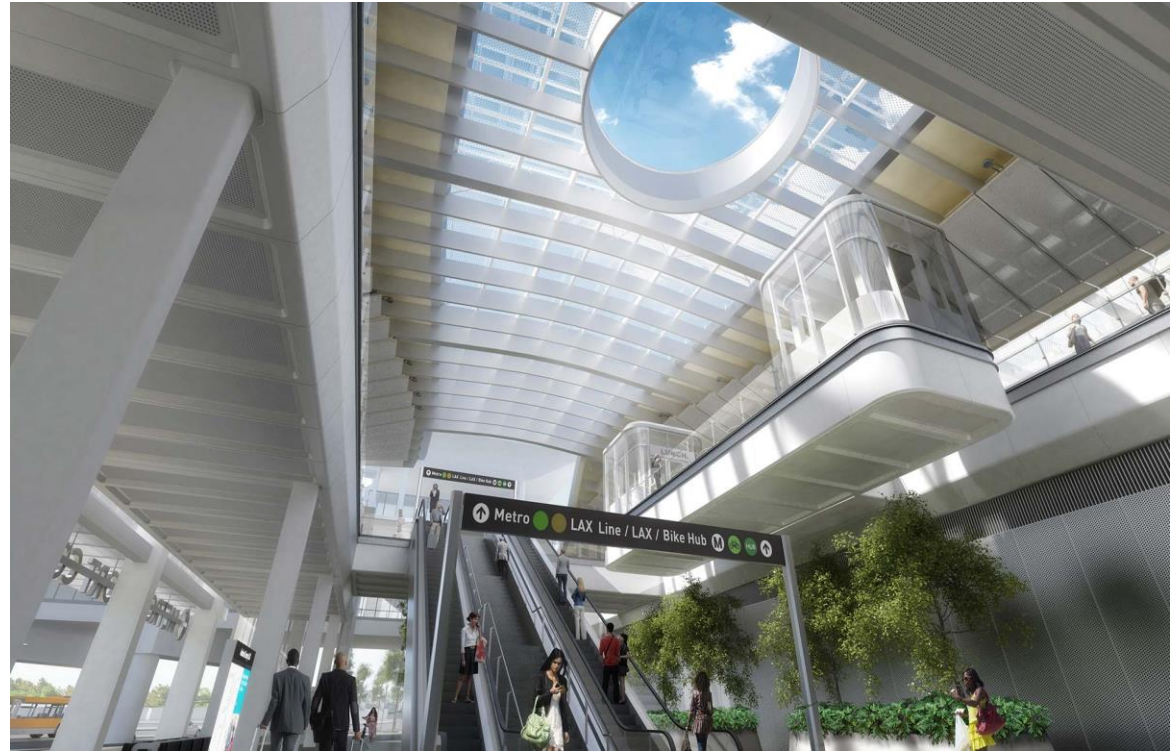
Active Transport Programs: First/Last Mile

Hannah Brunelle



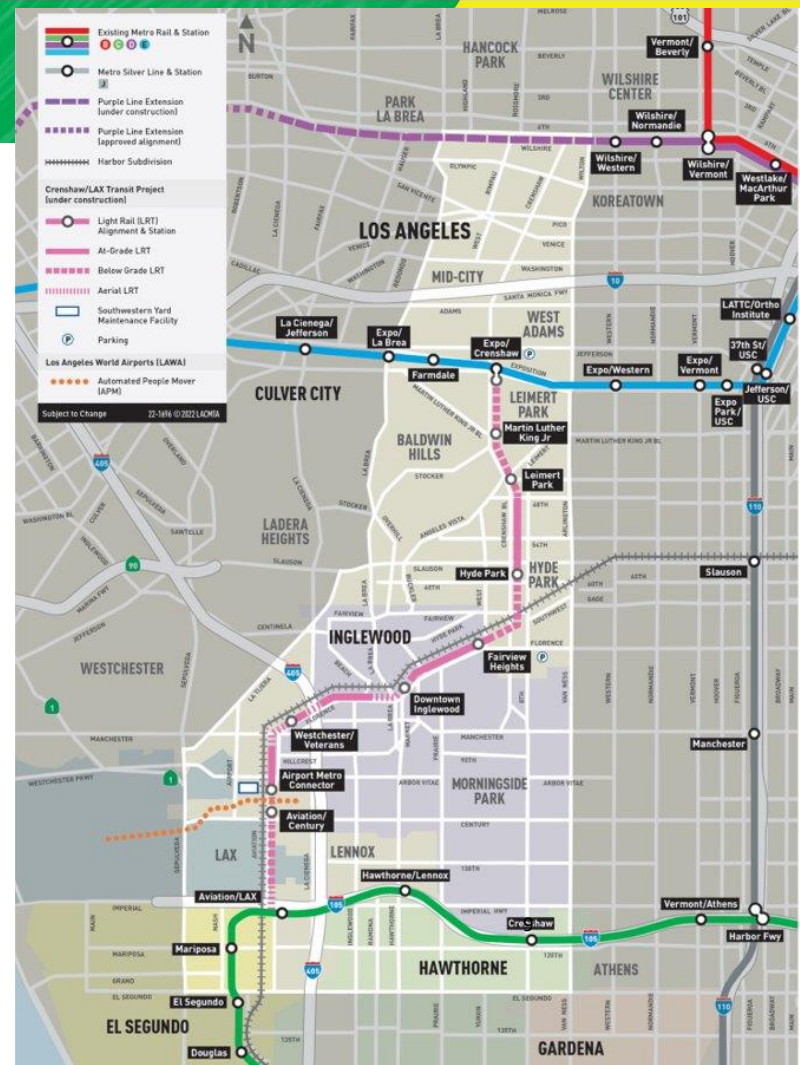
Agenda

- > Introduction
- > Project Background
Current Status
- > C & K Line Routes
- > Metro Active Transport
Programs: First Mile/Last Mile
Initiatives
- > Questions



Project Overview

- > The Metro K Line Project is a new 8.5-mile, eight station light rail line linking Metro C Line to the E Line
- > On October 7, 2022 the Metro K Line began operating between Expo/Crenshaw and Westchester/Veterans stations
- > A free bus shuttle connects the Westchester/Veterans and Aviation/LAX stations



Project Overview

- > K Line connection to the C Line is anticipated in late 2024
- > LAX/Metro Transit Center Station, formerly known as Airport Metro Connector (AMC), is under construction, with an anticipated late 2024 opening
- > In June 2022, the Metro Board approved the station name, LAX/Metro Transit Center Station, connecting Los Angeles International Airport (LAX) with AMC
- > Located at 96th St and Aviation Bl
- > Project budget of \$898M

The station features

- > Light rail connections
- > Bus plaza and connections to regional carriers
- > Bike hub
- > Customer service center
- > Commercial space
- > Future direct connection to the LAX Automated People Mover (APM)



Project Map



LAX/Metro Transit Center Station - Located at 96th St and Aviation Bl



LAX/Metro Transit Center Station



LAX/Metro Transit Center Station - Mezzanine



- > The Mezzanine will provide convenient access to the bus plaza, rail lines, bike hub and much more

Concept Rendering

Metro Art

- The Metro Art Policy allocates 0.5% of transit construction costs for public art for the project
- Artists are selected through an open, competitive selection process
- The station includes a monumental suspended sculptural artwork
- For more information about Metro Art visit metro.net/art



Glenn Kaino, artist. *The Distance of the Sun*. (rendering)

LAX/Metro Transit Center Station - Bike Hub



Concept Rendering



LAX/Metro Transit Center - Looking West From Arbor Vitae St



Construction of the station is advancing. Installed glass panels.

LAX/Metro Transit Center - View From Platform Level



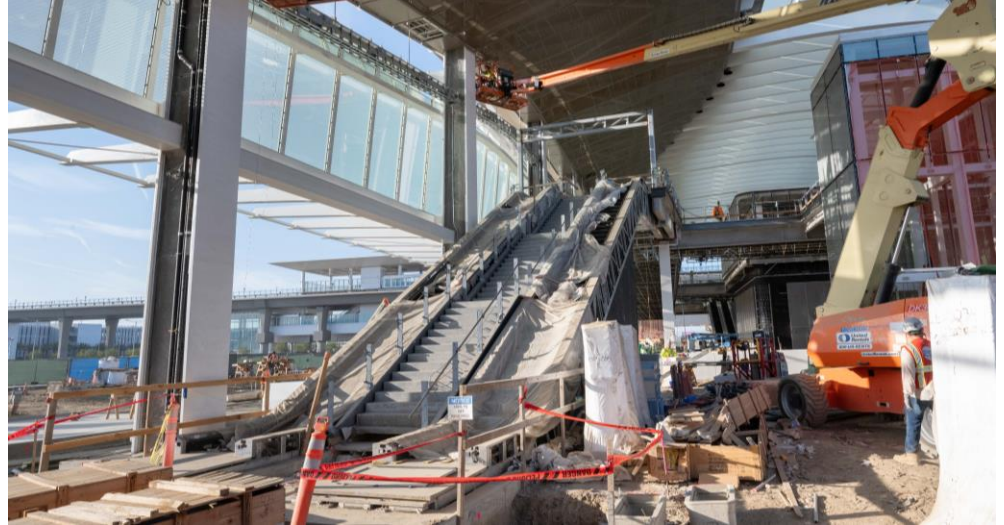
Closer view of the station with view of the escalator to the mezzanine.



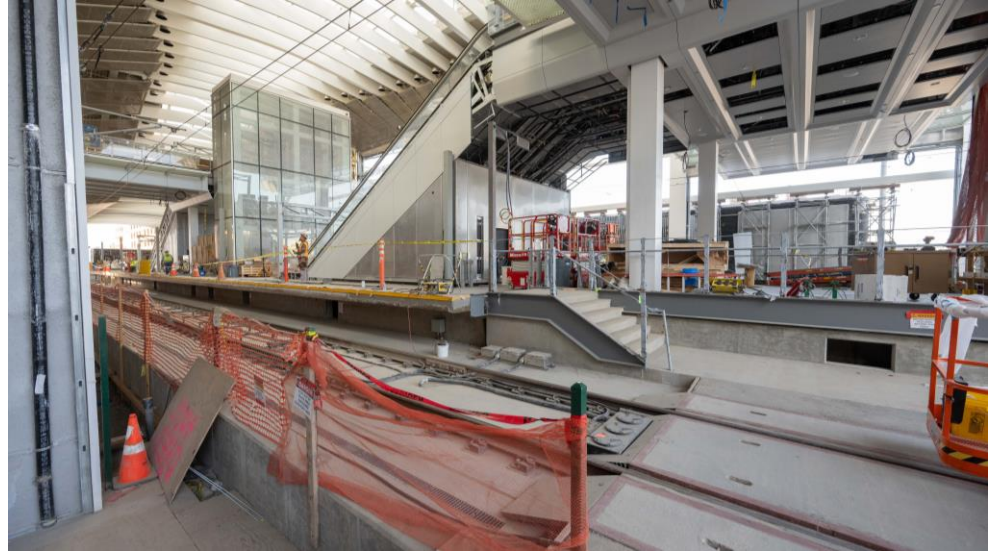
Retail & Ticketing Kiosk on Bus Plaza



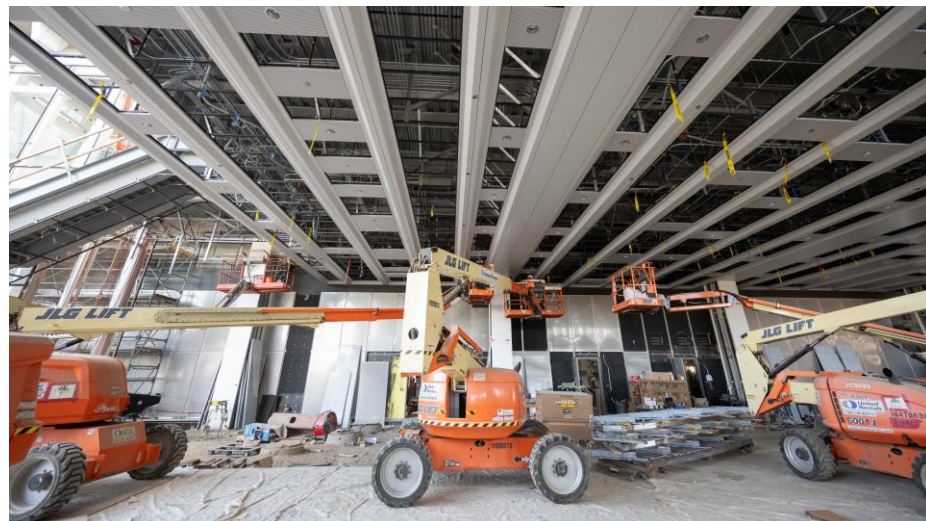
Elevators & Escalators Will Provide Convenient Station Access



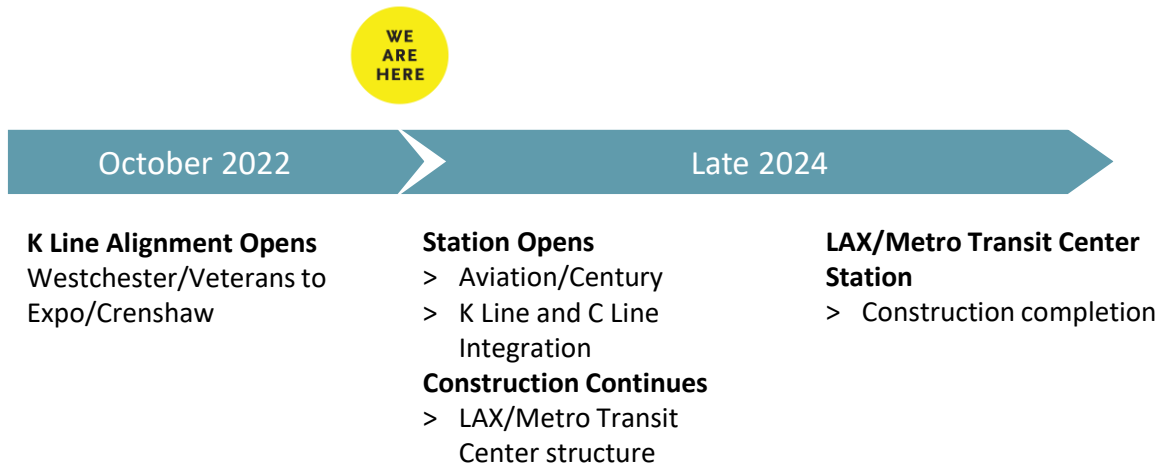
Bus & Rail Services Will Be Available At the Station



Dedicated Bus Operations Building At The Station



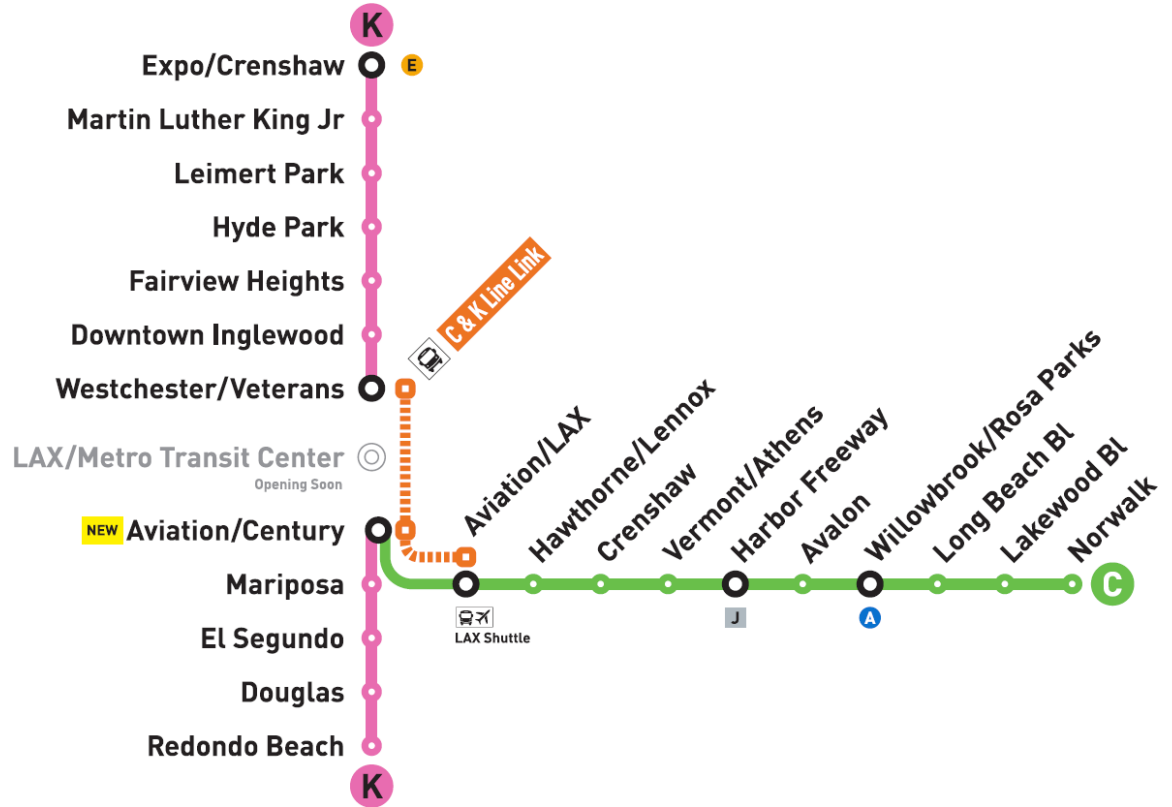
Project Schedule



Metro C and K Line Service Change

Service Change: K & C Line Integration & Aviation/Century Station Opening

- > In preparation for the opening of LAX/Metro Transit Center Station, trains testing will start this Fall
- > The Aviation/Century Station will also open soon
- > K & C line trains will serve new stations as part of the service change



Proposed Operational Plan: K & C Line and LAX/Metro Transit Center Opening

- > The LAX/Metro Transit Center Station will open soon
- > K & C line trains will serve new stations as part of the service change



Metro Active Transport Programs

MAT Project: Aviation/LAX Station First/Last Mile

- > Measure M established the **Metro Active Transport (MAT) Program**, which funds FLM improvements to expand the reach of transit
- > **Funding ~3.3M awarded to City of LA** through MAT for implementation of FLM improvements near the LAX/Aviation C Line Station. The agencies of El Segundo and Los Angeles County will separately pursue implementation funding for this effort
- > We are working with the community and stakeholders to help identify which improvements to implement

MAT Project Area:
1/2-mile radius of station



Join Us for a Community Pop-Up Event!

- > **What: Picnic in the Plaza Pop-Up!**
- > **When: Saturday, October 26, 3:00 p.m. to 5:00 p.m.**
- > **Where: Aviation/LAX C Line Station Plaza**
- > Join your neighbors at the Aviation/LAX station to help identify and prioritize strengths, barriers, and opportunities for walking, biking, and accessing public transportation in the 1/2-mile radius around the station area.
- > Participants are invited to this family-friendly event to share feedback on enhancing mobility and comfort for pedestrians, cyclists, and transit riders. The plaza will be activated with kid-friendly activities, and refreshments will be provided!



Stay connected to this project



213.922.4998



laxconnector@metro.net



metro.net/laxconnector

A bright yellow speech bubble with rounded corners and a tail pointing towards the bottom right. The words "THANK YOU" are cut out of the bubble in a bold, blue, sans-serif font. The bubble is set against a solid blue background.

THANK YOU