

Welcome!

We will begin in a few moments.

710 Task Force Meeting #4

January 10, 2022





We're developing a new vision for the 710 corridor.

710 TASK FORCE



Interpretation / Interpretación /kar bakasray / Interpretasyon



To listen to the meeting in another language:

Español:

- > *Llamada en español:* 408.650.3123
- > *Código de acceso:* 472-843-765

Khmer:

- > សេចក្តីសម្តែង អំពីការហៅចូលប្រជុំ: 312.757.3121
- > សេខកូដចូលប្រជុំ: 604-458-837

Tagalog:

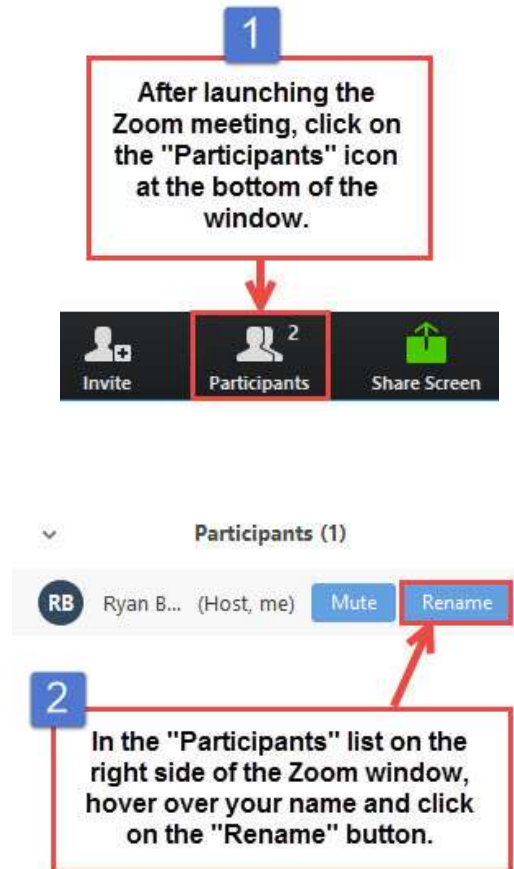
- > *Mga Detalye sa Call-in sa Pagpupulong:* 872.240.3412
- > *Kodigo:* 983-261-765

Tech Support - Google phone line/text

- > Phone: 323.609.3345
- > monitoring, translation support

Task Force Member Identification

Task Force Members, please change your Zoom screen name to include: Name and Organization Name



Raise Hand / *Levantar la mano*



- > Click **Raise Hand** in your meeting controls or
- > **Press*9** on the phone line.
- > To lower your hand, click **Raise Hand** in your meeting controls.
- > Comments & questions can also be provided in writing by using the **Q&A** function.
- > The **Q&A** button is located on the control panel at the bottom of your screen.
- > If you're listening in on our Spanish, Khmer or Tagalog **phone** call-in lines and have a question or comment, please **press *6** to unmute yourself and let the interpreter know.

- > *Haga clic en “**Raise Hand**” o “**Levantar la mano**” en los controles de la reunión o*
- > ***Presiona *9** en la línea telefónica.*
- > *Para bajar la mano, haga clic en “**Raise Hand**” o “**Levantar la mano**” en los controles de la reunión.*
- > *Los comentarios y las preguntas también se pueden proporcionar por escrito mediante la función de **Q&A**.*
- > *El botón **Q&A** se encuentra en el panel de control en la parte inferior de la pantalla.*
- > *Si está escuchando nuestras líneas telefónicas en español, jemer o tagalo y tiene una pregunta o comentario, presione *6 para abrir la línea y avisar al intérprete.*

Welcome!



Facilitator



Erika C.B. Morales
Partner, Morales + Morales Partners

Agenda

5:00 pm **Welcome, Introductions, Agenda Review, Meeting Objectives** (10 minutes)

5:10 pm **Agenda Item #1: Purpose, Formation, and Working Protocols of the 710 Task Force** (45 minutes)

- Feedback Received and Updates (20 minutes)
 - > Community Leadership Committee
 - > Executive Steering Committee
 - > Decision-making process
- Task Force Discussion (15 minutes)
- **Public Comment** (10 minutes)

5:55 pm **Agenda Item #2: I-710 South Corridor Existing Conditions** (45 minutes)

- Overview (20 minutes)
- Task Force Discussion (15 minutes)
- **Public Comment** (10 minutes)

6:40 pm **Agenda Item #3: Senate Bill 671 - Clean Freight Corridor Efficiency Assessment** (30 minutes)

- Overview and Next Steps (5 minutes)
- Task Force Discussion (10 minutes)
- Task Force Action Item (5 minutes)
- **Public Comment** (10 minutes)

7:10 pm **Next Steps** (10 minutes)

- Task Force Meetings
 - > Task Force Meeting #5, *Thursday, February 17, 5-7:30pm*
 - > Task Force Meeting #6, *Monday, March 14, 5-7:30pm*
 - > Task Force Meeting #7, *Monday, April 11, 5-7:30pm*
 - > Task Force Meeting #8, *Monday, May 9, 5-7:30pm*
- Working Group Meetings
 - > Charter and Governance Structure Working Group
Monday, January 24, 1-2:30pm
 - > Clean Truck Working Group
Tuesday, January 25, 1-2:30pm
 - > Community Engagement Strategy Working Group
Wednesday, January 26, 1-2:30pm
- Executive Steering Committee
 - > Nomination process opens
Monday, January 10
 - > Nomination process closes
Friday, January 23
 - > Vote at Task Meeting #5
Thursday, February 17
- Stakeholder Survey will close on *Friday, January 14*
- Vision and Goals Survey will open on *Friday, January 14*, and closes on *Friday, February 4*
- Community Leadership Committee Application opens on *Friday, January 14*, and closes on *Friday, February 18*

7:20 pm **General Public Comment and Closing Remarks** (15 minutes)

Meeting Objectives

- > Provide an update on the next steps to finalize the Purpose, Formation, and Working Protocols of the I-710 South Corridor.
- > Explore existing conditions of the I-710 South Corridor including mobility, air quality/environment, local communities, goods movement, and economic need.
- > Start the conversation about the next phase of the 710 Task Force process – Vision and Goals
- > Determine course of action on Senate Bill 671: Clean Freight Corridor Efficiency Assessment.

FOR TRUE **COMMUNITY** REACH OUT TO PEOPLE WHO LIVE ADJACENT TO **FREEWAY**



WE NEED TO **NOTIFY** PEOPLE THIS IS HAPPENING

THOSE MOST AFFECTED SHOULD BE INVOLVED



ELECTRONIC & **PRINT ADS** FROM METRO?

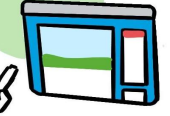


GREAT IDEA! Will DISCUSS!

HOW DO WE **SIGN-UP** FOR NEXT MEETING

ATTEND

WEBSITE UPDATED REGULARLY



SHARE TOPICS & QUESTIONS AHEAD OF THE MEETING



Metro

METRO.NET/PROJECTS/1-710-CORRIDOR



KEEP A **FIRM** SCHEDULE

VERY IMPORTANT

COMMON OUTREACH



SHARE IN AS MANY WAYS POSSIBLE

INSTAGRAM TWITTER TIK-TOK



GIVE KIDS **FLYERS** AT SCHOOL



TASK 710 FORCE

MEETING THREE

PUBLIC COMMENT

LET'S AIM TO MEET **EPA STANDARDS**

LET'S HAVE AN **AIR MONITORING PROGRAM**

AIM TO BE LIKE OTHER PARTS OF LA



A GOOD **GUIDEPPOST**

USE DATA FROM OTHER PARTS OF LA AS REFERENCE IN TERMS OF **EQUITY**



HOW CAN PEOPLE **APPLY?**

NOW HIRING



EMAIL

WILL BE PUBLIC SOON

LEARN ABOUT PEOPLE

DIVERSE IN DIFF WAYS

EASY

GAUGE INTEREST

Purpose, Formation, and Working Protocols of the 710 Task Force

Where We Are Now

Purpose, Formation & Working Protocols of the 710 Task Force

- > Introduction and History of the 710 Corridor
- > Purpose of Task Force
- > Community Engagement Strategy
- > Charter and Community Agreements
- > Introduction to the Equity Planning and Evaluation Tool



Work Plan Status

- > Completed most steps or benchmarks in the Purpose, Formation, & Working Protocols phase
- > Launched a survey for additional feedback on the materials developed for this phase
- > Reaching our first consensus checkpoint as we commence the next phase (Vision & Goals)

Remaining Tasks and Activities Before Consensus Checkpoint

- > Charter and Community Engagement Working Groups to refine Community Leadership Committee (CLC), Executive Steering Committee (ESC), and Decision-Making language in the 710 Charter
- > Consensus Checkpoint for this phase of the project is tentatively scheduled for Task Force Meeting #5

Ongoing Tasks and Activities

- > Continued development of the Community Engagement Strategy
- > Formation of the Community Leadership Committee (CLC) and Executive Steering Committee (ESC)

I 710 South Corridor Stakeholder Survey

Survey Overview

- > Over 3,000 stakeholders received the survey via email on Tuesday, December 21.
- > There are 6 open-ended questions and 7 closed-ended demographic questions for the survey respondent.
- > As of Tuesday, January 4, 10 survey responses were received. Metro has also received 2 feedback letters from the Legal Aid Foundation of Los Angeles and Coalition for Environmental Health and Justice (CEHAJ).
- > The survey will remain open until Friday, January 14. Please share with your networks: [Metro I-710 South Corridor Stakeholder Survey \(typeform.com\)](https://www.metro.net/transportation/south-corridor-stakeholder-survey)
- > The project team and the Charter and Community Engagement Working Groups will consider input.



Metro I-710 South Corridor Stakeholder Survey

Metro and Caltrans seek your input on the development of two committees that will help direct and provide community input into the work of the 710 Task Force.

Background: In May of 2021 Metro and Caltrans took action to suspend the original I-710 South Corridor Project environmental report for Alternative 5C in response to collective concerns raised by the U.S. Environmental Protection Agency and local communities regarding air quality, displacement, and community impacts.

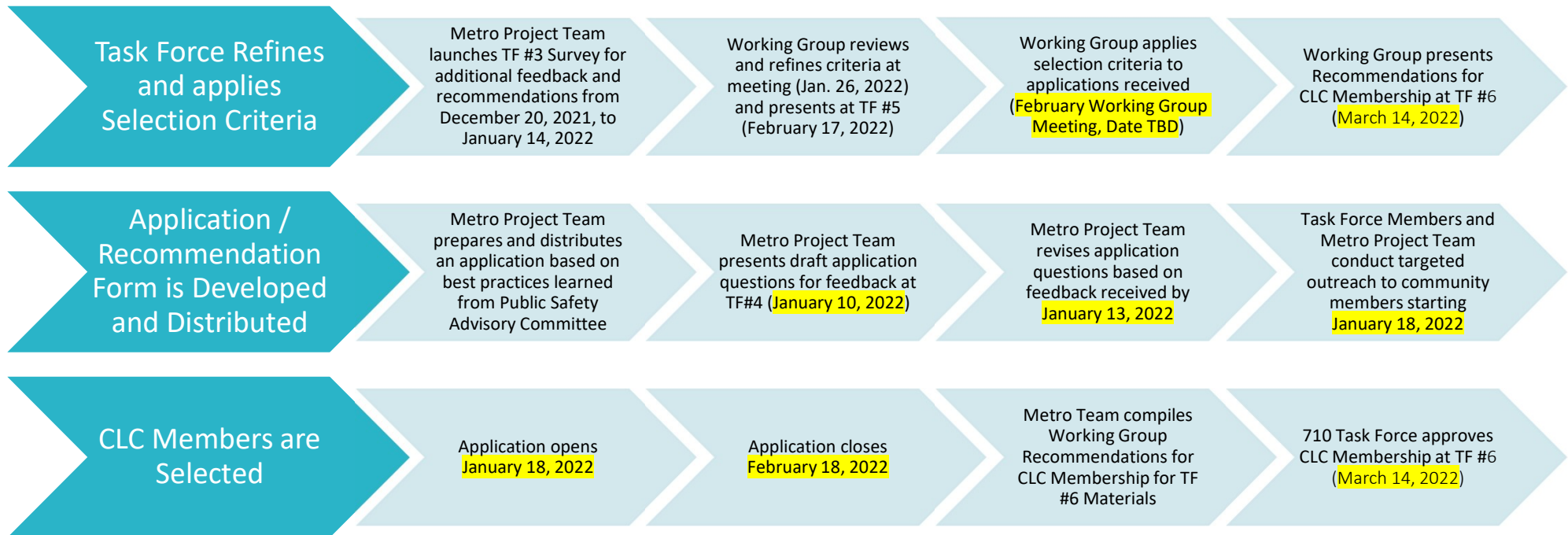
Metro and Caltrans initiated the I-710 South Corridor Task Force (710 Task Force) in September 2021 to re-evaluate the needs of the corridor and its communities, develop multimodal strategies to meet these needs, identify potential projects and programs in the short and long-term based on those strategies, and create a prioritized investment plan to allow Metro and Caltrans - in partnership with local, state and federal stakeholders and agencies - to implement the recommended set of multimodal projects and programs.

● Takes 7+ min

Start press Enter ↵

Community Leadership Committee: Status Update

We are moving three key areas of work forward for the CLC Formation:



Community Leadership Committee: Application

Candidate Information Requested

- > Residence or work address (or major cross streets)
- > Demographic information (i.e., age, race/ethnicity, gender, sexual orientation, and primary language spoken)
- > Areas/topics of particular interest
- > Primary mode of travel (Driving alone, carpool, rail, bus, bike, paratransit, walking, or other)
- > Affiliation with CBOs, businesses, government agencies, or civic or non-profit organizations
- > Information on community involvement/engagement activities
- > Preferred meeting times (provide various 2-hour time slots)
- > Preferred language

Basic Qualifications

- > Must live or work within the I-710 South Corridor Study Area
- > Must not be a current 710 Task Force Member

Preferred Qualifications

- > Candidates that can demonstrate first-hand knowledge of community issues, history, and concerns
- > Candidates that are engaged and connected to broader community networks and engagement channels

Executive Steering Committee: Proposal [As written in Draft Charter]

Purpose

The purpose of the Executive Steering Committee (ESC) is to work with Metro and Caltrans staff to plan Task Force meetings and to support the work of the Community Leadership Committee and Task Force activities.

Composition

The ESC will comprise five members, including two members from the Community Leadership Committee and three members from the Task Force. The three Task Force members will reflect the diversity of its stakeholders with one representative elected by the Task Force from each of the three groups of members:

- > Community-Based Organizations
- > Cities/Governmental Agencies
- > Goods Movement/Transportation/Labor/Business

Officers

The ESC will be led by three Co-Chairs. These positions will be elected by the 710 Task Force from the Task Force membership.

The three Co-Chairs will alternate as Chair for each meeting as described below.

- > Chair: The Chair shall preside at all meetings of the 710 Task Force and shall exercise and perform the functions and duties as may be assigned by the Task Force and prescribed herein.
- > Vice-Chair: The Vice-Chair shall perform the duties of the Chair in his or her absence, and when so acting shall have all the powers of and be subject to all the restrictions of the Chairperson. The Vice-Chair shall also support functions assigned by the ESC.
- > Second Vice-Chair: TBD

Meetings

ESC Meetings will occur two weeks before each Task Force meeting.

Executive Steering Committee: Status Update

Proposed Next Steps

Project staff recommends tentatively moving forward with a nomination and selection process for the Executive Steering Committee (ESC) based on:

- > feedback received to date
- > any additional input gathered during today's Task Force discussion
- > finalize the language in the Task Force Charter during the Charter and Governance Structure Working Group meeting on January 24 and the Task Force Meeting #5 on February 17.

Proposed Nomination Process

> Key Dates

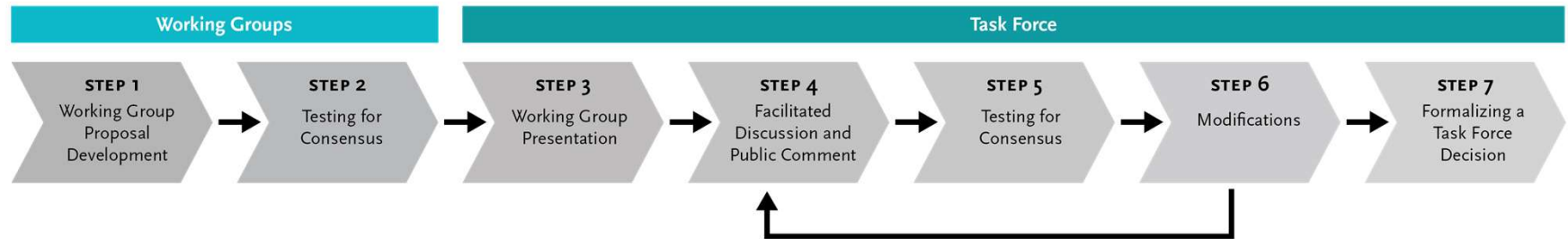
- Monday, January 10 – Nomination process opens
- Friday, January 23 – Nomination process closes
- Thursday, February 17 – Vote at Task Force Meeting #5

> Process

To submit nominations, email Michael Cano at CanoM@metro.net, identifying the name of the person you wish to nominate and the group of members they represent:

- Community-Based Organizations
- Cities / Governmental Agencies
- Goods Movement / Transportation / Labor / Business

Implementing the Decision-Making Process



- > **Steps 1 and 2** - Task Force Members will participate in Working Group meetings to revise and discuss materials for the Purpose, Formation, & Working Protocols of the 710 Task Force
- > **Step 3** - Working Groups, with the support of the Project Team, will present proposals at Task Force Meeting #5
- > **Steps 4 through 6** – Erika, the Facilitator for the 710 Task Force, will guide a discussion and public comment, testing for consensus and modifications to materials, at Task Force Meeting #5
- > **Step 7** – The Task Force will formalize a decision and will proceed to implementation

710 Task Force Discussion and Public Comment

710 Task Force Discussion

Public Comment

You will be given **1 minute** to make your question or comment, in order to maximize participation.

Se le dará **1 minuto** para hacer su pregunta o comentario para darles a todos los asistentes la oportunidad de hablar.

01:00

mins: secs: type:

 Breaktime for PowerPoint by Flow Simulation Ltd. Pin controls when stopped

I-710 South Corridor Existing Conditions

I-710 South Corridor Existing Conditions: Objectives

Objectives

- > Provide a high-level review of data that helps us understand what is happening in the I-710 South Corridor
- > Consider existing conditions as you think of vision and goals for the corridor
- > Encourage sharing of this information with distribution channels
- > Gather feedback on the data gathered and what's needed to improve the presentation

I-710 South Corridor Existing Conditions: Table of Contents

What is the Study Area?

- > Corridor Study Area Map

Who Lives and Works in the I-710 South Corridor?

- > Race and Ethnicity
- > Household Income
- > Jobs by Industry Sector
- > Land Use

Travel & Mobility Characteristics

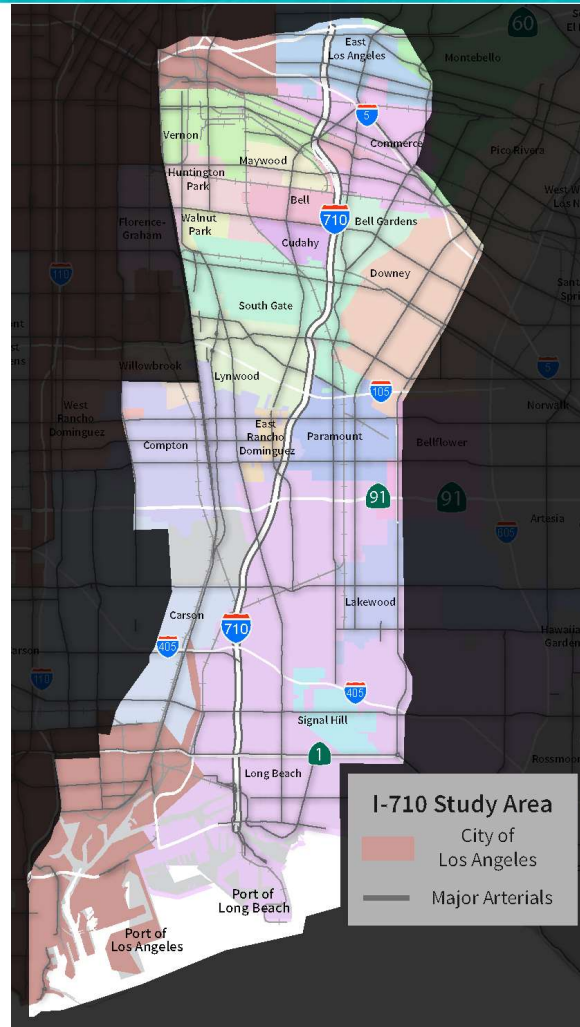
- > Metro Rail Boardings
- > Bicycle and Pedestrian Gaps
- > Commuters by Mode
- > Morning Speeds
- > Daily Truck Trips

Impacts on the I-710 South Corridor Communities

- > Density of all crashes (trucks, bikes, autos)
- > Diesel Particulate matter
- > Asthma Rate

What is the study area?

Study Area



Who lives and works in the I-710 South Corridor?

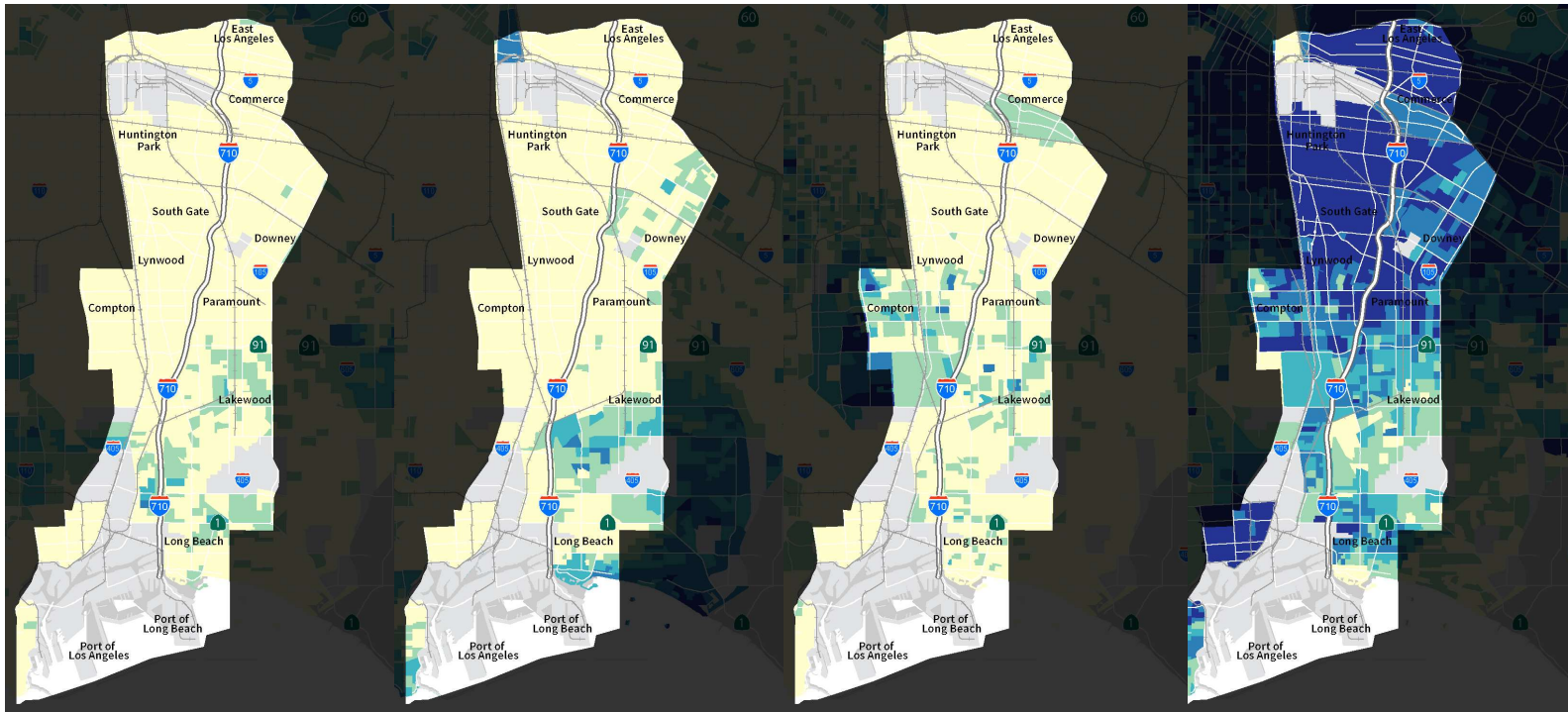
Race and Ethnicity

% Asian (66k)

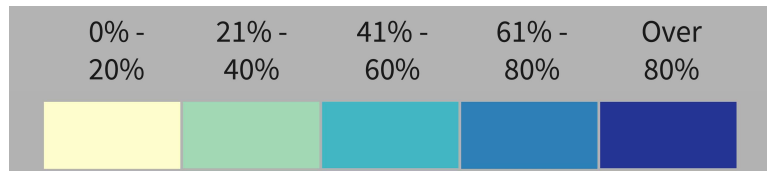
% White (94k)

% Black (101k)

% Hispanic (893k)



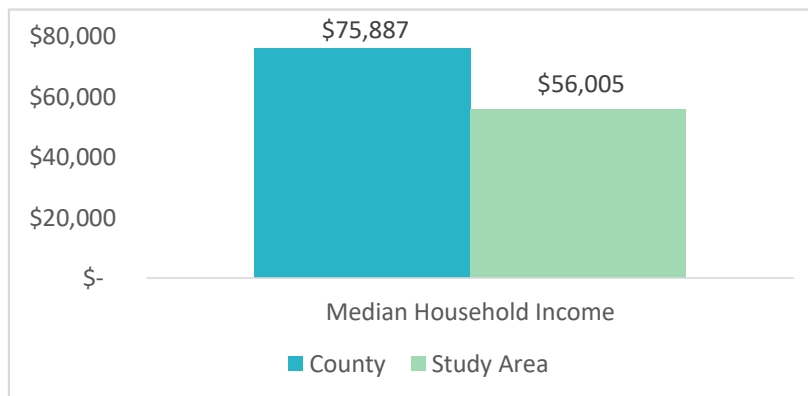
Source: 2015-2019 American Community Survey



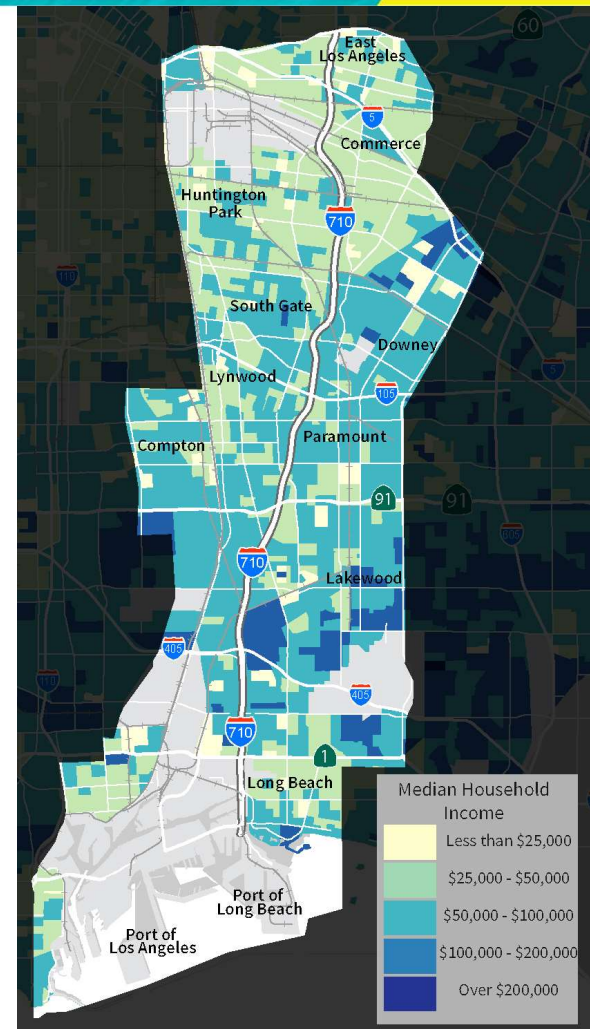
There are 845 American Indians in the study area, 0.6% of LA County American Indians

Household Income

- > Lower Median Household Income than LA County on Average
- > Study area has proportionately less households with high incomes than LA County
- > Neighborhoods west of I-710 tend to have lower household income
- > Northern portion of Study Area has lowest income overall

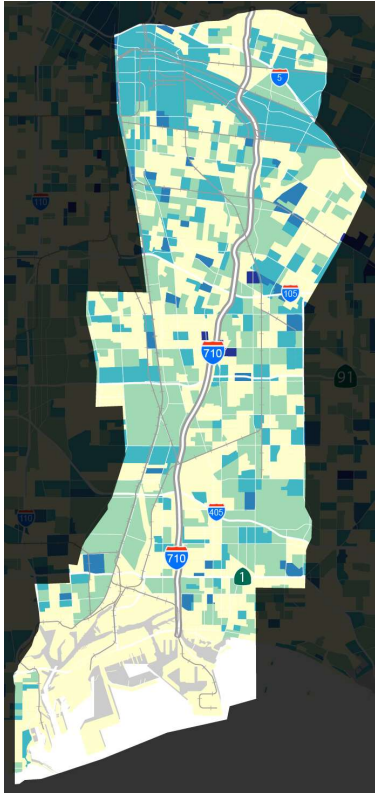


Source: 2015-2019 American Community Survey

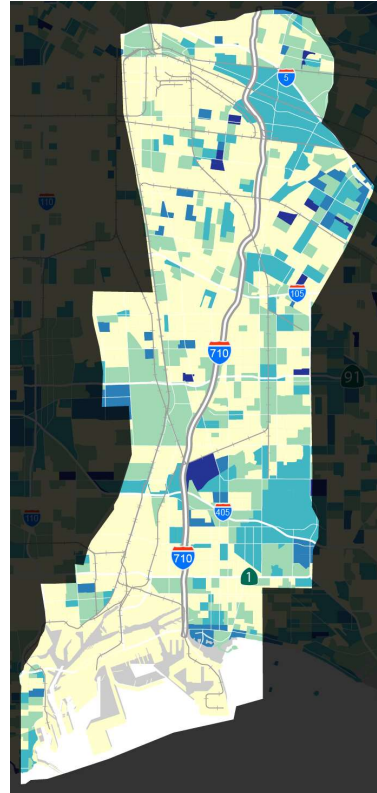


Jobs by Industry Sector

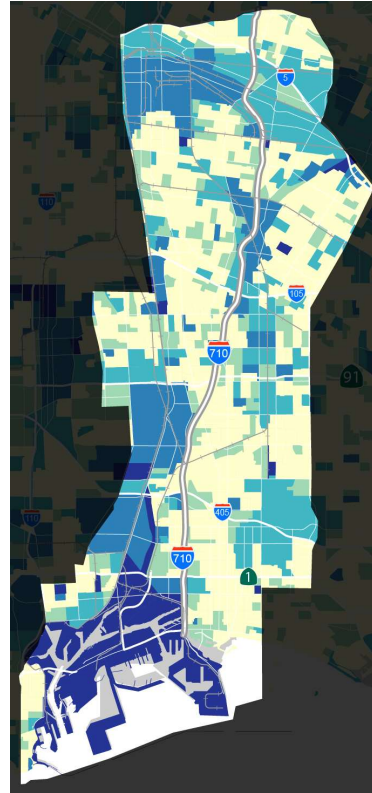
Commercial (90k)



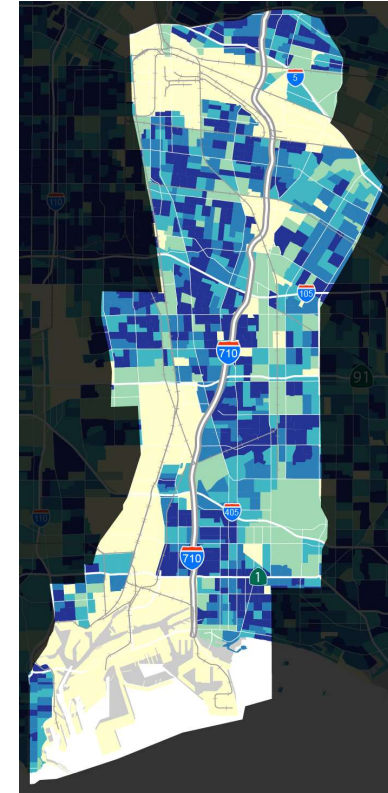
Professional Services (105k)



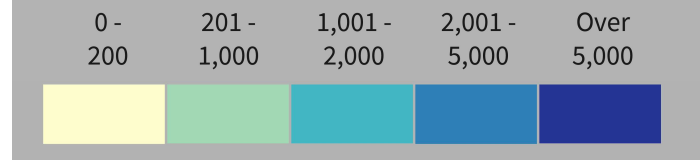
Industrial (140k)



Other Services (145k)

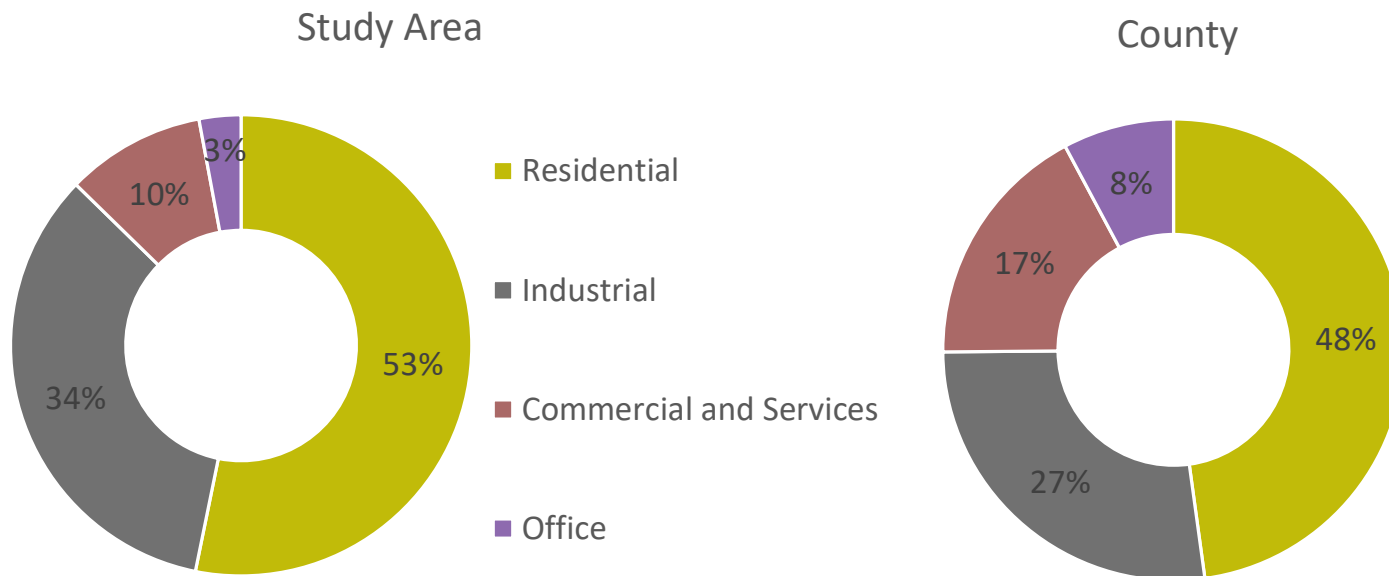


Source: 2019 Longitudinal Employer-Household Dynamics



Land Use (Square Feet)

Study Area has more industrial, more residential and less commercial and office land use than the County as a whole.



Note: Areas calculated in square feet

Source: Southern California Association of Governments (SCAG) Land Use Map

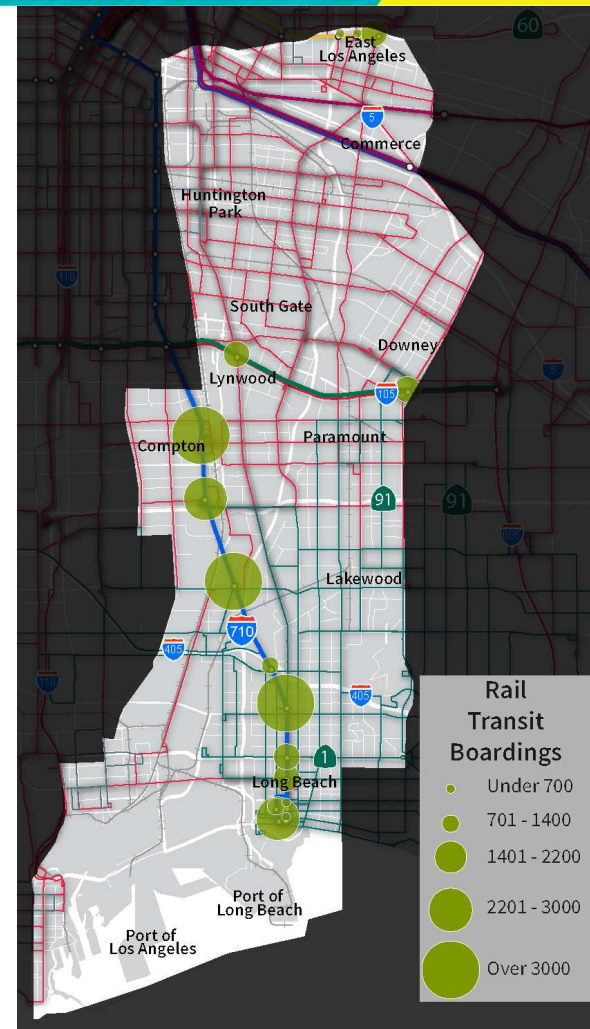
Travel & Mobility Characteristics

Metro Rail Boardings (Daily Average)

- > LA Metro Boardings (Rail)
 - 111,000 total Metro bus and rail boardings in Study Area
 - 8.5% of all LA Metro Rail boardings are in the Study Area
- > Highest ridership at transfer stations
- > Many rail passengers board at the end of the A Line (blue) in Long Beach
- > Ridership Data are from 2019 (pre-pandemic levels)
- > Metro Rail ridership dropped from 296,000 in 2019 (pre-pandemic) to 160,000 in 2020 (pandemic)

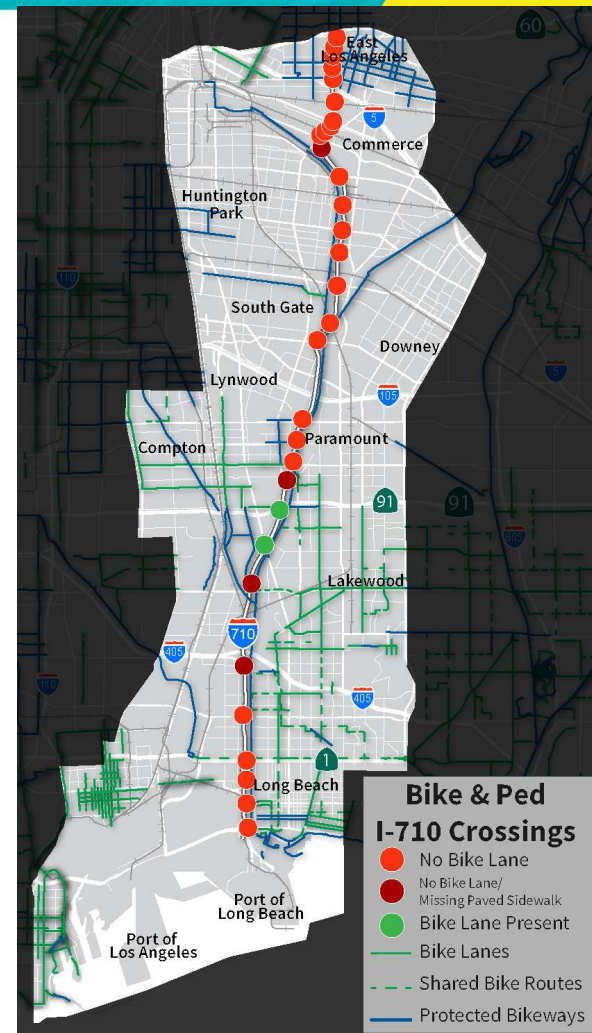


Source: 2019 LA Metro Ridership Data – Pre-Pandemic/Metro Ridership Index



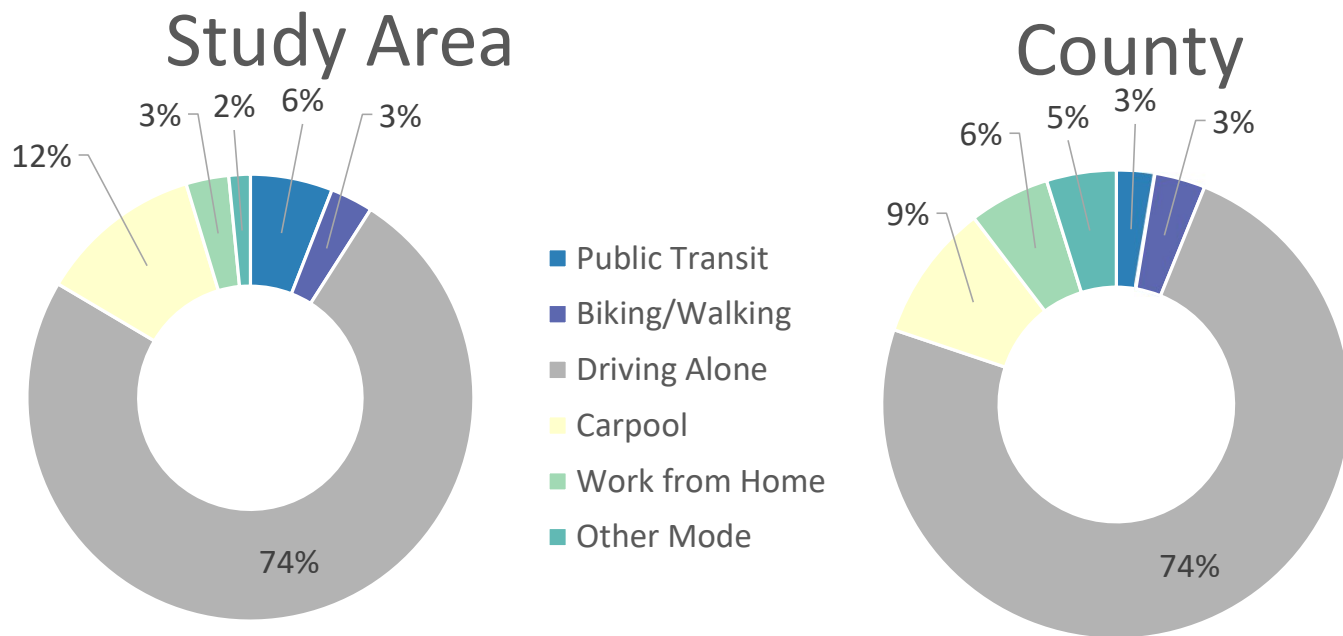
Bicycle and Pedestrian Gaps

- > Many of the I-710 and LA River east/west crossings do not have designated bicycle lanes
- > Some crossings have missing or unpaved or narrow sidewalks
- > These gaps, in addition to high volumes of cars entering and exiting the freeway make crossing the freeway and river safely difficult for bicyclists and pedestrians



Commuters by Mode

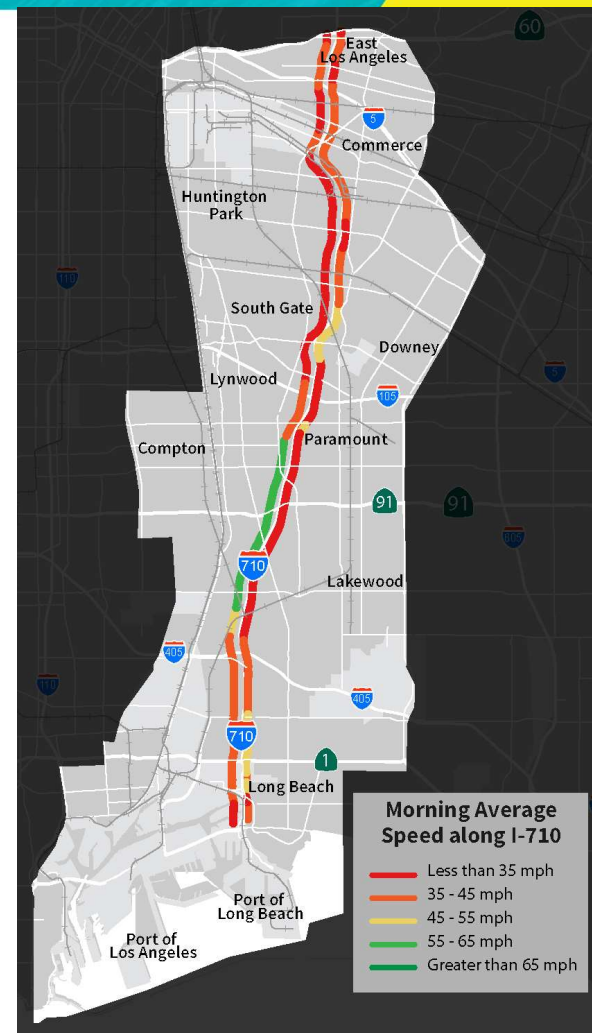
Mode share in the Study Area is similar to the County as a whole, with higher percent of carpooling and less work from home but double the use of transit



Source: 2015-2019 American Community Survey

I-710 Freeway Morning Speed

- > Speeds represent the most congested morning hours
- > Much of I-710 has speeds under 45 miles per hour with a substantial portion of the corridor under 35 mph
- > The highest speeds in the morning are in the mid-corridor area southbound between I-405 and I-105



Source: National Performance Management Research Data Set (NPMRDS)

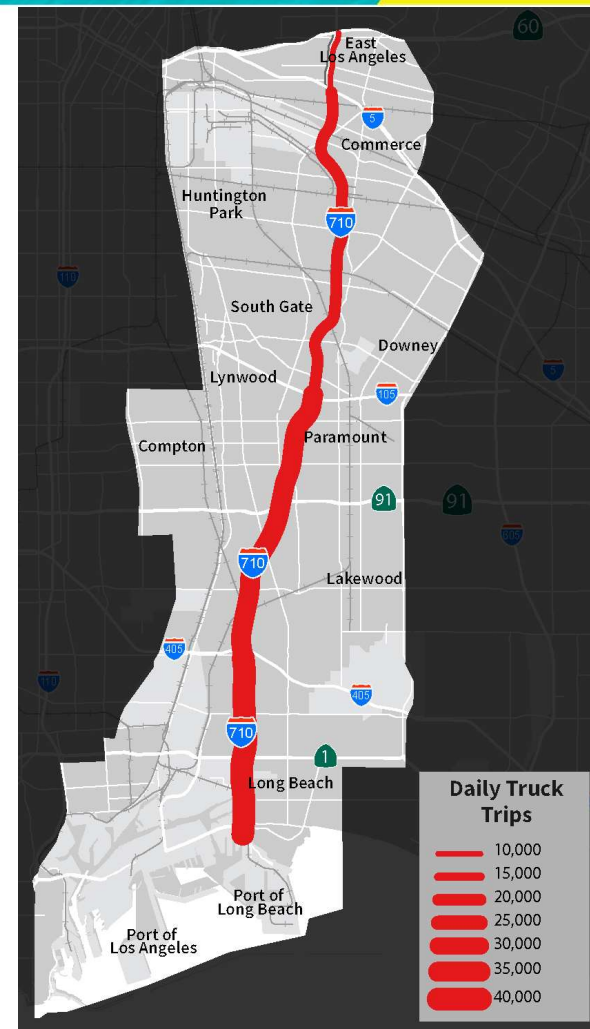
I-710 Daily Truck Trips

- > Substantially heavier truck volumes occur at southern end of corridor, near the Ports with nearly 40,000 daily heavy-duty trucks
- > Truck volume and truck percentage is extremely high south of SR-91 as compared to typical freeways
- > South of I-405 most of the heavy-duty trucks are oriented to Port activities
- > Truck trips decrease substantially north of I-105

I-710 Mainline location:	Daily Truck Trips	Port Truck %
Bet. SR60 & I-10	10,000	10%
Bet. I-5 & SR60	15,000	13%
Bet. I-105 & I-5	19,000	32%
Bet. SR91 & I-105	34,000	53%
Bet. I-405 & SR91	35,000	69%
South of I-405	39,000	85%



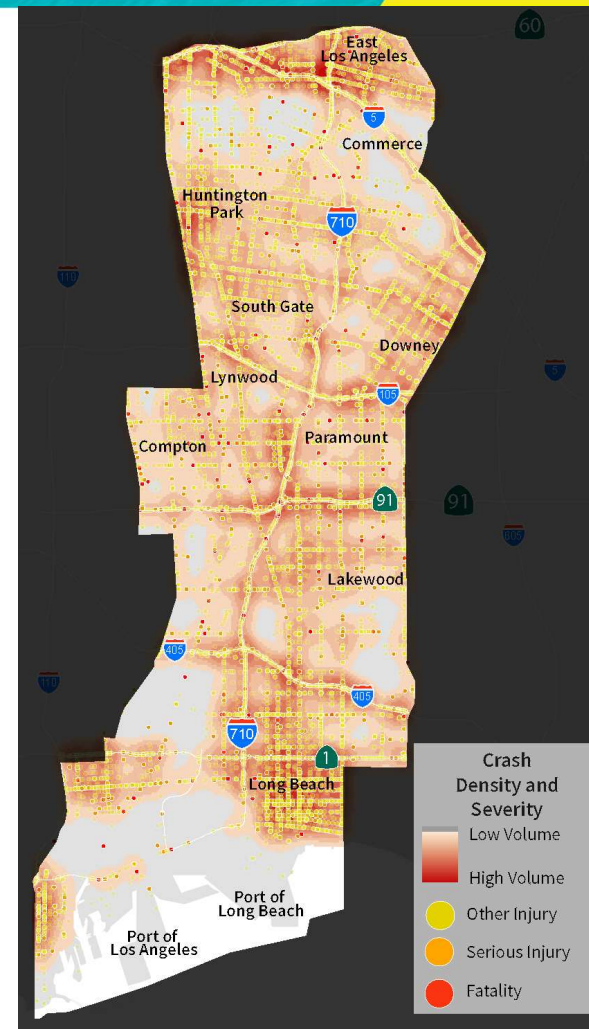
Source: PortTAM



Impacts on the I-710 South Corridor Communities

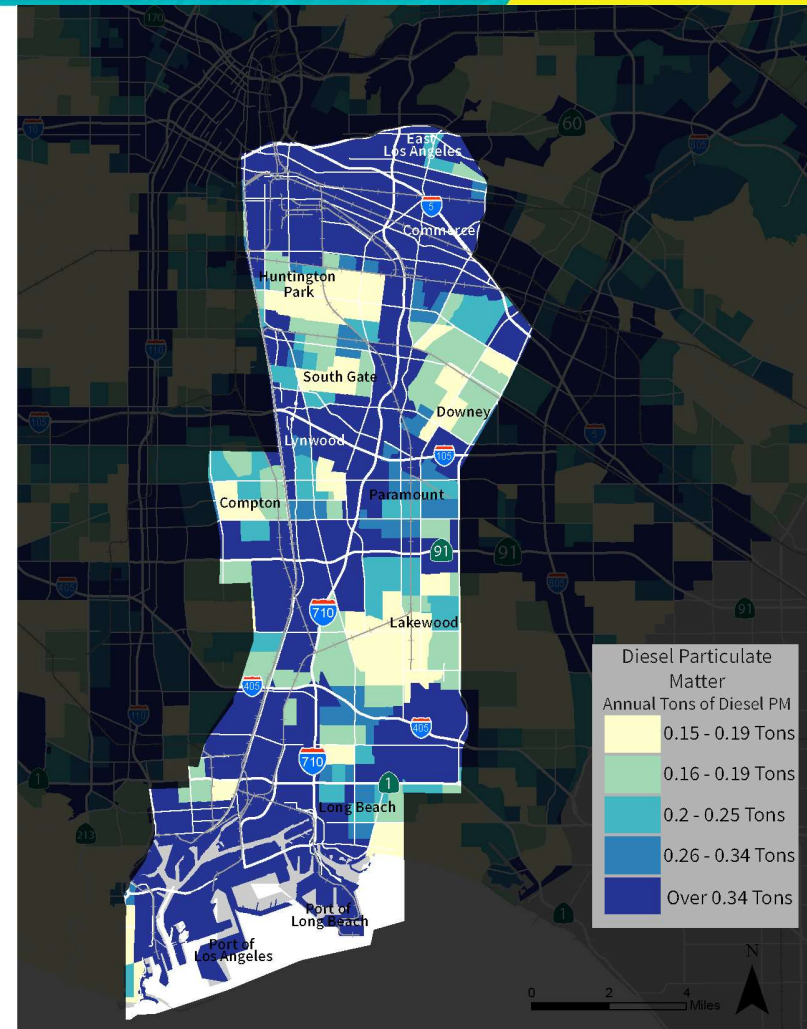
All Crashes – Location and Severity

- > All crashes are shown, including vehicle only, bicyclist-involved and pedestrian-involved crashes
- > Darker red color indicates relatively more crashes concentrated close to each other in an area
- > Northern portion of study area and downtown Long Beach have the highest concentration of crashes
- > Note this shows total crashes and not crash rates



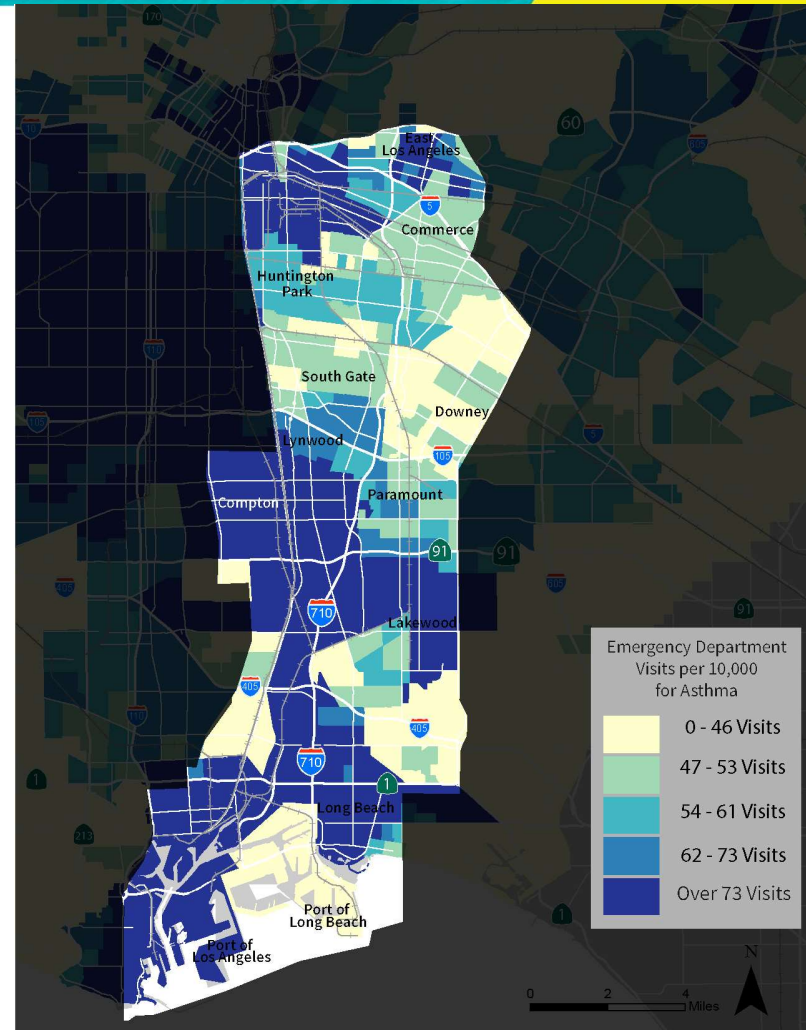
Diesel Particulate Matter

- > Diesel Particulate Matter (PM) comes from exhaust from trucks, buses, trains, ships, and other equipment with diesel engines.
- > Diesel PM contains hundreds of different chemicals, many of which are harmful to health and contribute to cancer risk.
- > This map captures tons of diesel PM emitted per year by both mobile and stationary sources within and nearby populated parts of each census tract.
- > Diesel PM concentrations occur throughout the Study Area, including around the Ports, south Long Beach, near I-710/SR-91 interchange, along I-710, and the northern portion of Study Area



Asthma Rate

- > Many factors influence asthma rates, including air pollution.
- > One way to measure asthma rates is the estimated number of emergency department visits for asthma per 10,000 people over the years 2015 to 2017.
- > The highest category of asthma incidents tends to be clustered and located throughout the Study Area



Source: CalEnviroScreen 4.0

We Need Your Feedback

Key Questions – Initial Feedback Requested

- > Are there communities impacted directly by the I-710 that should be included in the study area?
- > Are there data sets that are missing or could be enhanced in this presentation?
- > Do these data sets accurately represent the lived experience for community members in the 710 Corridor?
- > What are your initial reactions to the data presented?
- > How do these data sets help inform the Vision and Goals for the 710 Corridor the 710 Task Force should adopt?

Process and Next Steps

Next Steps

- > View full *I-710 South Corridor Existing Conditions* video (approximately 30 minutes) at [I-710 South Corridor Existing Conditions Video](#)
- > The discussion will continue through March 2022.
- > Provide feedback:
 - Written comments are accepted at any time by email at 710Corridor@metro.net.
 - 710 Task Force meetings
 - Future community outreach efforts to be announced.



710 Task Force Discussion and Public Comment

Public Comment

You will be given **1 minute** to make your question or comment, in order to maximize participation.

Se le dará **1 minuto** para hacer su pregunta o comentario para darles a todos los asistentes la oportunidad de hablar.

01:00

mins: secs: type:

 Breaktime for PowerPoint by Flow Simulation Ltd.

Pin controls when stopped

Senate Bill 671: Clean Freight Corridor Efficiency Assessment

Senate Bill 671 : Clean Freight Corridor Efficiency Assessment

- > Establishes the Clean Freight Corridor Efficiency Assessment, requiring the California Transportation Commission (CTC) to identify freight corridors throughout the state that would be priority candidates for the deployment of zero-emission medium-and heavy-duty vehicles.
- > The CTC must submit a report containing the Assessment's findings and recommendations to certain committees of the Legislature by December 1, 2023. Findings and recommendations of this Assessment will be incorporated into the development of the California Transportation Plan.
- > As an initial step in the implementation of SB 671, CTC staff is seeking nominations for priority freight corridors to be considered in this Assessment.
- > Nominations are due by Wednesday, January 19, 2022.

Senate Bill 671 : Clean Freight Corridor Efficiency Assessment

Per a presentation made by CTC staff on December 10, 2021, the Assessment process will proceed through the following phases and timelines:

PHASE	SCHEDULE
(1) Identify Corridors, Energy Needs, and Battery Weight Impacts	December 2021 – June 2022 (7 months)
(2) Identify Projects – Infrastructure Safety / Throughput Local Streets / Roads	July 2022 – January 2023 (7 months)
(3) Barriers, Solutions, and Benefits	February 2023 – June 2023 (5 months)
(4) Review and Finalize Report	July 2023 – November 2023 (5 months)

Senate Bill 671 : Clean Freight Corridor Efficiency Assessment

- > While individual members of the 710 Task Force can nominate the I-710 South Corridor independently as part of this CTC process, the Project Team would like to bring the opportunity to the entire 710 Task Force to nominate the I-710 South Corridor as a collective priority and to submit a joint letter of support for the nomination to the CTC.

For Consideration by the 710 Task Force

- > *Shall the 710 Task Force nominate the I-710 South Corridor to the CTC as a priority candidate for the deployment of zero-emission medium- and heavy-duty vehicles, and send a letter of support for the corridor as part of the nomination process?*

710 Task Force Discussion and Public Comment

Public Comment

You will be given **1 minute** to make your question or comment, in order to maximize participation.

Se le dará **1 minuto** para hacer su pregunta o comentario para darles a todos los asistentes la oportunidad de hablar.

01:00

mins: secs: type:

 Breaktime for PowerPoint by Flow Simulation Ltd. Pin controls when stopped

Next Steps

Upcoming Meetings

Task Force Meetings

- > Task Force Meeting #5
Thursday, February 17, 5-7:30pm
- > Task Force Meeting #6
Monday, March 14, 5-7:30pm
- > Task Force Meeting #7
Monday, April 11, 5-7:30 pm
- > Task Force Meeting #8
Monday, May 9, 5-7:30pm

Working Group Meetings

- > Charter and Governance Structure Working Group
Monday, January 24, 1-2:30pm
- > Clean Trucks Working Group
Tuesday, January 25, 1-2:30pm
- > Community Engagement Strategy Working Group
Wednesday, January 26, 1-2:30pm

Look Ahead – Process

Developing the 710 Corridor Vision & Goals

- > Identifying Community Needs and the Regional Context
- > Analyzing Corridor Conditions and Identifying Disparities
- > Developing a Corridor Vision and Goals
- > Equity Planning and Evaluation Tool Checkpoint

Community Leadership Committee Application Process

- > Applications available January 18th, 2022
- > Applications due by February 18th, 2022
- > Opportunity to share the application with your networks
- > Participate in Working Group on Stakeholder Engagement Process

Executive Steering Committee

- > Monday, January 10 – Nomination process opens
- > Friday, January 23 – Nomination process closes
- > Thursday, February 17 – Vote at Task Force Meeting #5

Look Ahead – Process

Developing the 710 Corridor Vision & Goals

- > Identifying Community Needs and the Regional Context
- > Analyzing Corridor Conditions and Identifying Disparities
- > Developing a Corridor Vision and Goals
- > Equity Planning and Evaluation Tool Checkpoint

Metro I-710 South Corridor Stakeholder Survey (Survey #1)

- > Survey in English can be found here [Metro I-710 South Corridor Stakeholder Survey](#)
- > Survey in Spanish can be found here [Encuesta de Partes Interesadas del Corredor Sur de la Interestatal 710](#)
- > Respond no later than Friday, January 14th at 5:00 pm

Metro I-710 South Vision and Goals Survey (Survey #2)

- > Will be sent by e-blast Friday, January 14th
- > Response requested by Friday, February 4th

English



Spanish



General Public Comment and Closing Remarks

Public Comment

You will be given **1 minute** to make your question or comment, in order to maximize participation.

Se le dará **1 minuto** para hacer su pregunta o comentario para darles a todos los asistentes la oportunidad de hablar.

02:00

mins: secs: type:

 Breaktime for PowerPoint by Flow Simulation Ltd. Pin controls when stopped

Stay connected to this project



Michael Cano, *Deputy Executive Officer,*
Countywide Planning & Development
Metro

One Gateway Plaza, MS 99-13-1
Los Angeles, CA 90012



213.922.4710



710corridor@metro.net



metro.net/projects/i-710-corridor



@metrolosangeles



losangelesmetro

Thank you for joining us!