

Welcome!

Airport Metro Connector

Construction Update Meeting

June 20, 2024





Construction Update Meeting

AIRPORT METRO CONNECTOR CONSTRUCTION PROJECT



Housekeeping

Today's meeting is being recorded.
The recording and PDF will be posted on metro.net.



Attendee cameras are off and microphones are muted.



During the meeting, questions can be submitted using the Q&A icon.

Code of Conduct

Metro is committed to ensuring that all participants can fairly and clearly share ideas, comments and concerns about this project. To provide a safe and equitable process, we are asking for your help.

During this meeting, please:

- > **Respect the format of the meeting and allow everyone an opportunity to comment**

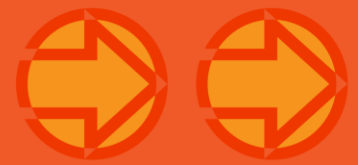


Metro's three priorities for addressing public safety



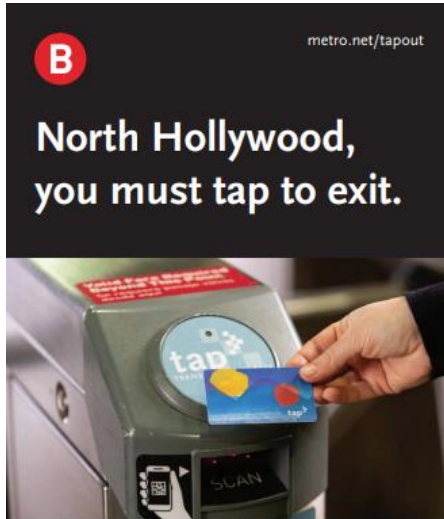
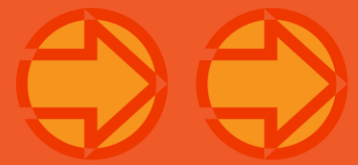
1. Increase the visible presence of uniformed personnel
2. Enhance access control
3. Strengthen partnerships to address societal issues

Increasing our visible presence



- Metro has begun surging presence of Metro Transit Security and Metro Ambassadors by 20%.
 - Increased teams riding on buses and trains
 - Increased issue reporting
 - Increased fare and code of conduct enforcement
- Contracted law enforcement partners have now begun to expand their visible presence.

STATION ACCESS CONTROL



Starting **May 28, 2024**, turnstiles will not open unless you tap your valid TAP card when you enter **and exit** North Hollywood Station.

Learn more at metro.net/tapout.

The system is safer when everyone on it is there for its intended purpose: transit.

Metro is:

- > Increasing fare enforcement through the surge of TSOs on the system.
- > Launching a pilot program at the North Hollywood B Line station fare gates to see if requiring people also to tap OUT would help confirm that valid fare was paid, improving fare compliance.
- > Right-sizing stations through interventions that improve lighting and control access to space.
- > Evaluating possible fare gate improvements.



THANK YOU

Agenda

> Introduction

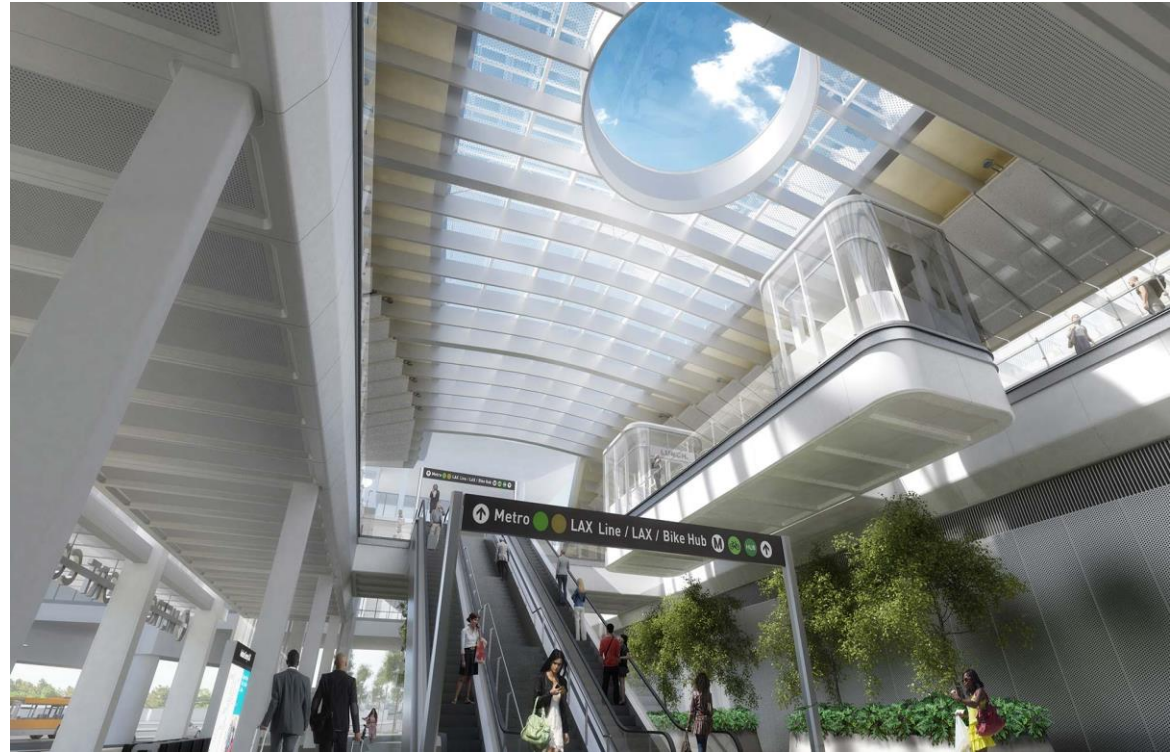
- Rafie Zamani, PE, Project Manager
- Chris Sheaffer, Construction Manager
- Brett Roberts; Community Relations Manager

> Project Background

> Current Status

> C & K Line Routes

> First Mile/Last Mile Initiatives



Project Overview

- > The Metro K Line Project is a new 8.5-mile, eight station light rail line linking Metro's C Line to the E Line
- > On October 7, 2022 the Metro K Line began operating between Expo/Crenshaw and Westchester/Veterans stations
- > A free bus shuttle connects the Westchester/Veterans and Aviation/LAX stations

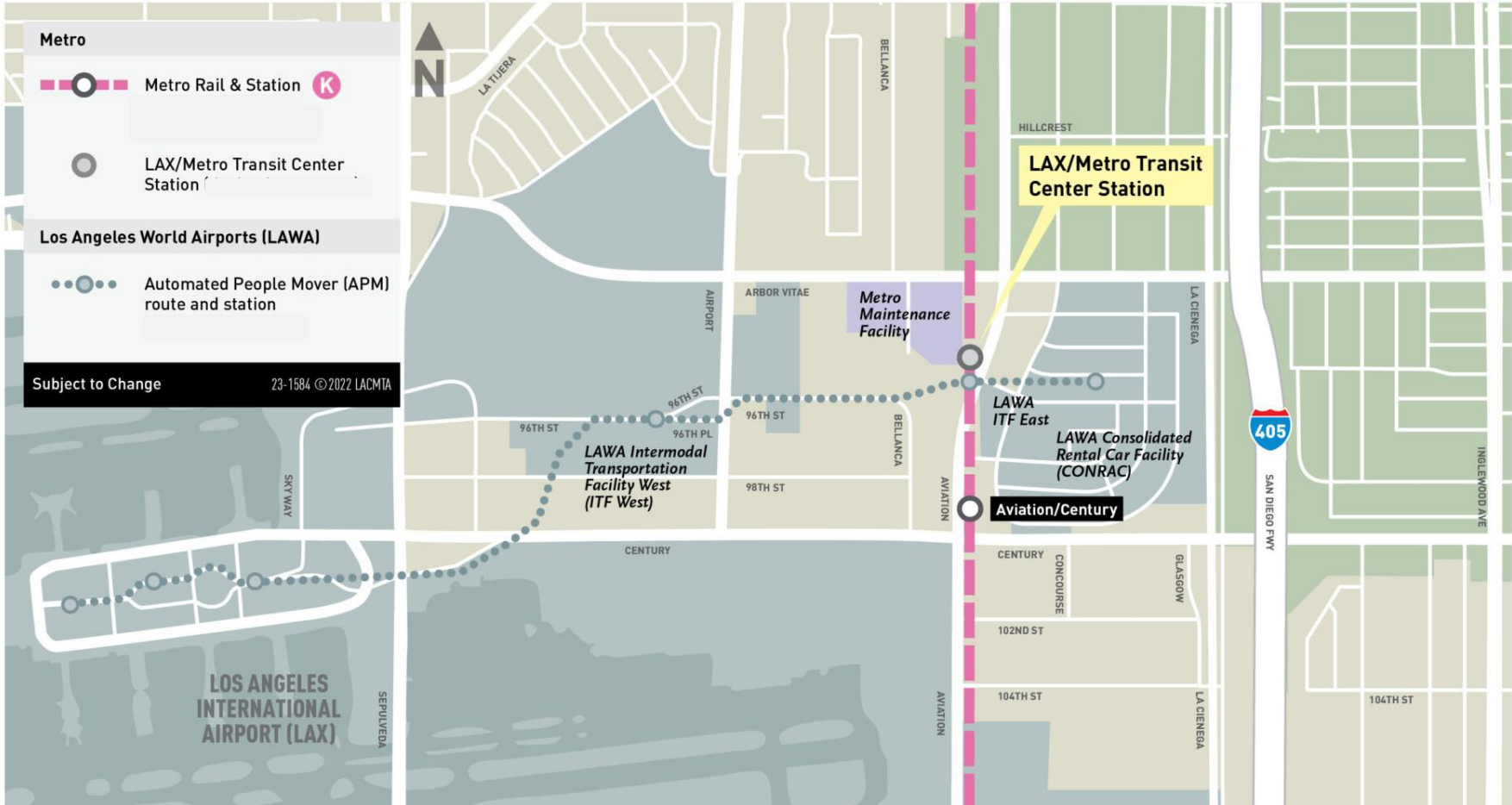


Project Overview

- > **Metro K Line connection to the Metro C Line anticipated in late 2024**
- > **Airport Metro Connector (AMC) is now under construction, with an anticipated late 2024 opening**
- > **Located at 96th St and Aviation Bl**
- > **Project budget of \$898M**
- > **The project will feature**
 - > **Bike Hub**
 - > **Customer service center**
 - > **Connections to regional carriers**
 - > **Commercial space and more.**



Project Map





AMC Project Concept Renderings - Mezzanine



M METRO AIRPORT CONNECTOR



AMC Project Concept Renderings- Bike Hub



AMC Project Construction Photos-Bus Canopy



AMC Project Construction Photos- Elevator Enclosure

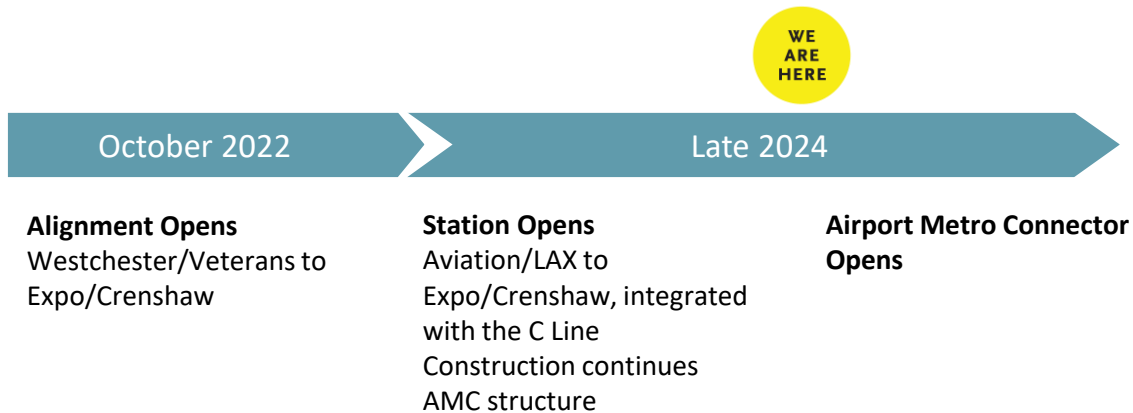


AMC Project
Construction
Photos-Track
#4 and Bus
Plaza from
Mezzanine



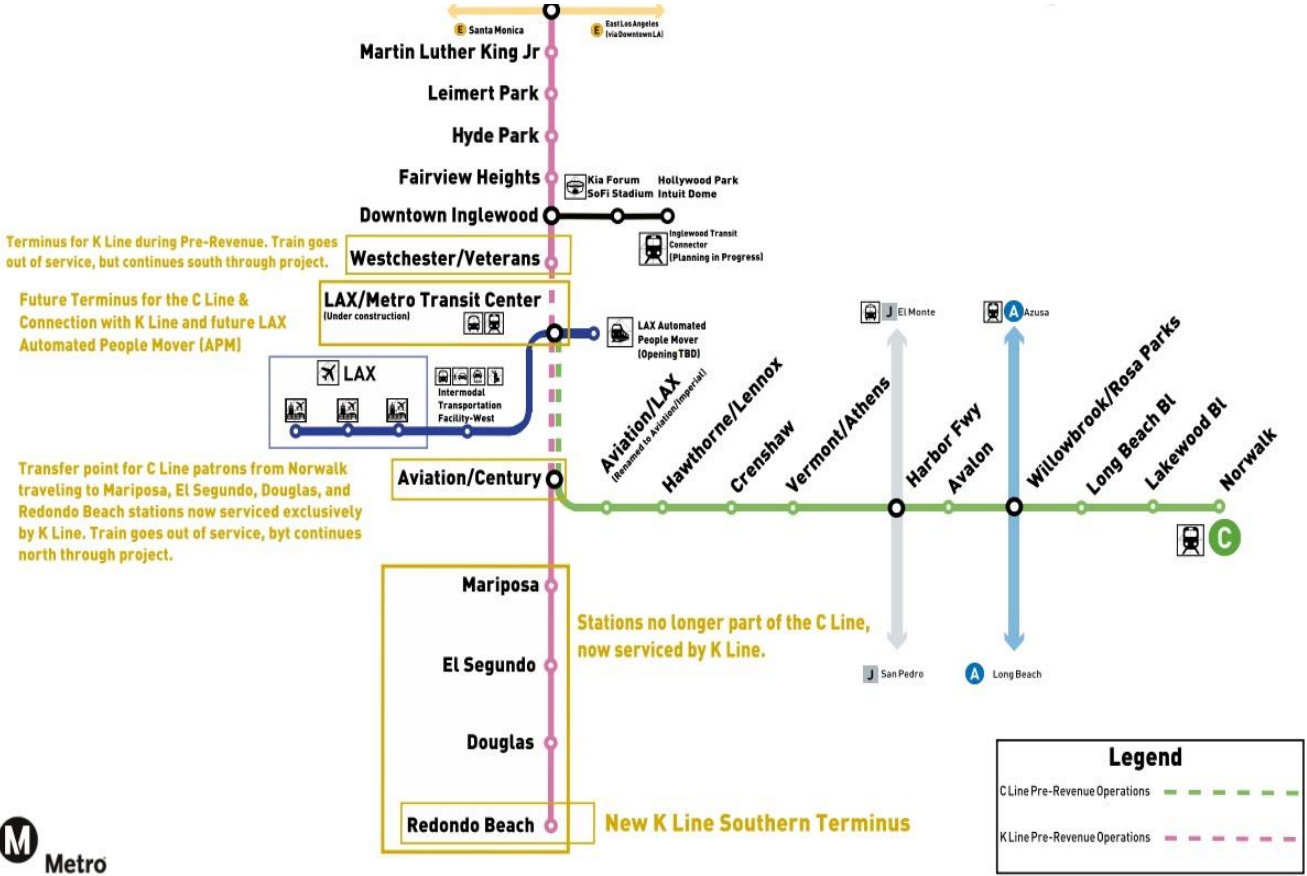
AMC Project
Construction
Photos-
Elevators
facing north

Project Schedule



ONGOING PUBLIC PARTICIPATION

Pre-Revenue K-Line Route





Final Operations

Final C and K-Line Route

Terminus for the C Line & Connection with K Line and future LAX Automated People Mover (APM)

Transfer point for C Line patrons from Norwalk traveling to Mariposa, El Segundo, Douglas, and Redondo Beach stations now serviced exclusively by K Line.



MAT Project: LAX/Aviation Station

- > Measure M established the Metro Active Transport (MAT) Program, which funds FLM improvements to expand the reach of transit
- > Funding ~3.3M awarded to City of LA through MAT for implementation of FLM improvements near the LAX/Aviation C Line Station. The agencies of El Segundo and Los Angeles County will separately pursue implementation funding for this effort
- > We are working with the community and stakeholders to help identify which improvements to implement

MAT Project Area:
½-mile radius of station




Community Kick-Off Event

- > **When: June 20th, 4:30 pm-6:30 pm**
- > **Where: L'Oreal Campus ProLAB Academy located at 888 N Douglas St, El Segundo, CA, 90245, access at Douglas St and Atwood Way**
- > **Join your neighbors to identify strengths, barriers, and opportunities for walking, biking, and accessing public transportation in the 1/2-mile radius around the LAX/Aviation Station Area on the C Line. Participants will engage in a hands-on Charrette, working in groups to identify barriers to accessing transit and develop ideas for enhancing mobility and comfort for pedestrians, cyclists, and transit riders.**



Stay connected to this project

 213.922.4998

 *laxconnector@metro.net*

 *metro.net/laxconnector*