


Division of Environmental Planning
Local Assistance Unit Presents:
Navigating through NEPA



Objectives

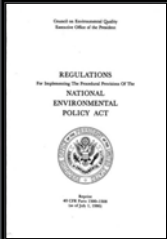
- Knowledge of:
 - Basic Understanding of NEPA
 - Tools that will help you
 - Environmental Review Process



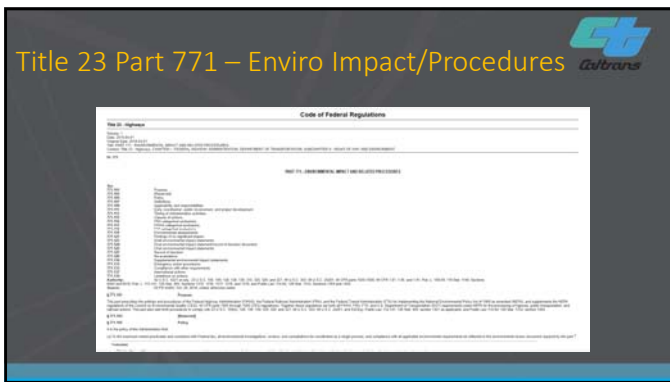


What is NEPA?

- Signed into law January 1, 1970 (42 USC 4321 et seq.)
- Established national policy for all federal agencies to consider the environment when proposing an action.
- In result, the Council of Environmental Quality (CEQ)
- Required each federal agency to establish procedures to comply with NEPA.








Tools to help navigate through NEPA

Caltrans Division of Local Assistance Procedures Manual (LAPM), Chapter 6, Environmental Procedures
[dot.ca.gov > Programs > Local Assistance > LAPM > Ch. 6](http://dot.ca.gov/Programs/LocalAssistance/LAPM/Ch_6)

Standard Environmental Reference (SER)
[dot.ca.gov > Programs > Environmental Analysis > SER](http://dot.ca.gov/Programs/EnvironmentalAnalysis/SER)

**LAPM Chapter 6:
Environmental Procedures**

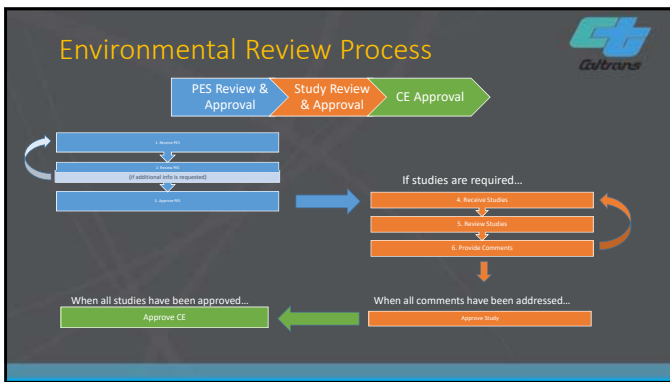


Exhibits


Exhibits applicable to this chapter can be found at:
<https://dot.ca.gov/programs/local-assistance/forms/local-assistance-procedures-manual-forms>


- Exhibit 6-A. Preliminary Environmental Study (PES)
- Exhibit 6-B. Instructions for Completing the Preliminary Environmental Study (PES) Form
- Exhibit 6-C. Table 2-F exempt Projects
- Exhibit 6-D. Table 3 Exempt Projects
- Exhibit 6-E. Categorical Exclusion Checklist
- Exhibit 6-F. Categorical Exemption/Categorical Exclusion Determination Form
- Exhibit 6-G. NECA/CEQA Reevaluation Form
- Exhibit 6-H. External Certifications Environmental Document Quality Control Review
- Exhibit 6-I. Instructions for Completing the External Certifications Environmental Document Quality Control Review Certification Form
- Exhibit 6-J. Preliminary Environmental Screening for Non-Infrastructure Projects (PES (NI))
- Exhibit 6-K. Instructions for Completing the Preliminary Environmental Screening for Non-Infrastructure Projects (PES (NI)) Form

Page 11 of 11
January 2019



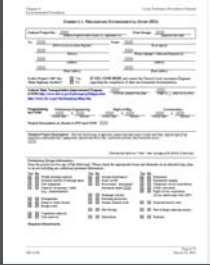
How can I avoid delays during the review and approval of my PES form?




Complete the PES per Instructions 

- ❖ Include Federal Project No.
 - ❖ Example: **4041-5006(500)**
- ❖ Include RTIP/FSTIP
- ❖ Include Detailed Project Description
- ❖ Include all Required Attachments in submittal
- ❖ Avoid inconsistencies

❖ Questions? Call me or any one of my staff and they'll be more than happy to help.




Do's and Don'ts 


Don't use statements like:

- Project description includes traffic signal upgrades and other "miscellaneous appurtenant" work.

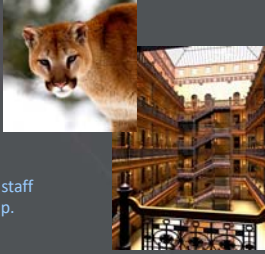
Instead include use statements like:


- "The proposed project will upgrade signal hardware by installing new pedestrian countdown signal heads, installing ADA compliant push buttons, signal controller upgrades, fiber optic cable and conduits, ethernet/fiber systems integration..."


How can I tell if studies will be needed beforehand so I can properly schedule for them? 

Complete the PES per Instructions 

- ❖ Whether its Noise, Air Quality, Hazardous Waste, Bio etc., you'll know if studies are needed from the instructions.
- ❖ *Note: The only reports you will not be able to predict are the Historical/Archeological Reports.*
- ❖ Questions? Call me or any one of my staff and they'll be more than happy to help.



What do I do if my consultant disagrees with comments received? 


Challenging comments Do's and Don't 

Do's:

- ❖ Read our comments
- ❖ Read our guidance in the SER

Don't:

- ❖ Hesitate to give us a call. We'll be more than happy to help in any way that we can.



Local Assistance Unit - Contact Info 

Senior Environmental Planner
Michael Enwedo
(213) 897-3245

Associate Environmental Planner
Quint Chemnitz
(213) 897-2863



Local Assistance Unit - Contact Info 

Environmental Planner
Shabnam Sheikh
(213) 897-0665

Environmental Planner
Henry Nguyen
(213) 897-3248

Environmental Planner
Rashmi Chandan
(213) 897-1186