

Next stop: more rail.

CRENSHAW/LAX TRANSIT PROJECT



Virtual Construction Update Meeting

May 25, 2022 | 6 PM



Thank you, Community Leadership Council!



Welcome, thank you for joining us!

| | | |
|--------|--|---|
| 10 min | Introductions & Metro News K Line Project Overview | Ginny Brideau , Community Relations Manager |
| 25 min | K Line Project Update & Station Art Tour | Raymond Acevedo , Community Relations Officer, Southern Segment Ron Macias , Principal Community Relations Officer, Northern Segment Erik Qvale , Manager, Creative Services |
| 20 min | Metro Photo Enforcement Program / Q&A | Raymond Acevedo , Community Relations Officer |
| 5 min | Business Solution Center & Business Interruption Fund | Eric Chun , Representative, Small Business Economic Resources |
| 5 min | Eat Shop Play Program | Jesus Galeno , Transportation Associate |
| 5 min | Rail Safety & Mobility Programs | Brittany Mullins , Principal Community Relations Officer |
| 20 min | Moderation / Q&A | Stephanie Leslie , Deputy Executive Officer Ginny Brideau , Community Relations Manager |

Discounted Fares/LIFE Program

Tap into savings.

A little help can go a long way. So we've made it easier to enroll in Metro's LIFE Program. Sign up now and get 90 days of free rides.

Visit metro.net/life to get started.



Fare collection has resumed. When riding, please have your fare ready.



LIFE Program Overview

The LIFE (Low-Income Fare is Easy) Program helps qualifying LA County residents save on paying their fares. Once you're in the program, you can purchase discounted passes or load free regional rides with your TAP card.

To save on Metro fares

| Metro Fare Product | LIFE Discount | Final Cost | LIFE Price with Metro Promo (valid 12/15/21 to 7/30/22) |
|---|---------------|------------|---|
| 20 Regional Rides: Base fare only. Interagency transfers are additional cost. | Free | \$0 | |
| Regular 30-Day/Monthly Pass | \$24 | \$76 | \$26 |
| Regular 7-Day/Weekly Pass (up to four/month) | \$6 | \$19 | \$6.50 |
| Senior/Disabled 30-Day/Monthly Pass | \$8 | \$12 | |
| College/Vocational 30-Day/Monthly Pass | \$13 | \$30 | |
| Student K-12 30-Day/Monthly Pass | \$10 | \$14 | |
| Regular EZ Monthly Pass | \$24 | \$86 | |
| Senior/Disabled EZ Monthly Pass | \$8 | \$34 | |

To qualify

The figures below are valid from July 1, 2021, to June 30, 2022.

| Household Size | Annual Income |
|----------------|------------------|
| 1 | \$41,400 or less |
| 2 | \$47,300 or less |
| 3 | \$53,200 or less |
| 4 | \$59,100 or less |
| 5 | \$63,850 or less |
| 6 | \$68,600 or less |

Where to get an application

- > Download at metro.net/LIFE
- > FAME Assistance Corporation (FAC) or International Institute of Los Angeles (IILA)
- > Metro Customer Centers and Big Blue Bus location, Blue: The Transit Store

How to apply

- Apply online at taptogo.net/applyforLIFE or submit your completed application:
- > By email, mail or in-person at FAME or IILA
 - > At Metro Customer Centers and Big Blue Bus location, Blue: The Transit Store
- To complete your application, please have the following:
- > Photo ID for all applicants
 - > You have the option to self-certify or provide proof of income, such as:
 - Medi-Cal, EBT, any proof of public benefit, Social Security award, check stub or tax return
 - Or
 - Complete Self-Certification in Section 3 of the application.

To use your LIFE benefits

- Ways to purchase your discounted pass or load 20 free rides:
- > By phone at 866.827.8646
 - > Online at taptogo.net
 - > In-person at a TAP vendor location, visit taptogo.net/vendors

Additional transit systems participating in the LIFE program:



Do I contact FAME or IILA?

| If you live in: | Contact |
|---------------------|---------|
| Antelope Valley | FAME |
| Central Los Angeles | FAME |
| Gateway Cities | IILA |
| San Fernando Valley | FAME |
| San Gabriel Valley | IILA |
| Santa Clarita | FAME |
| South Bay | FAME |
| Westside Cities | FAME |

International Institute of Los Angeles (IILA)

3800 La Crescenta Av
Suite #207
Glendale, CA 91214
818.244.2550
lifefinfo@ilosangeles.org
Learn more at ilosangeles.org

FAME Assistance Corporation (FAC)

1968 W Adams Bl
Los Angeles, CA 90018
323.870.8567
lifefinfo@famecorporations.org
Learn more at famecorporations.org

Meet the Primes Event

MEET THE PRIMES

for the **Inglewood Transit Connector Project**

To all eligible Disadvantaged Business Enterprise (DBE) firms, please join the City of Inglewood as they formally introduce the shortlisted firms that are eligible to move forward with the next phase of the procurement process for the Inglewood Transit Connector Project.

Attendees will be given the chance to meet each of the shortlisted firms and seek potential partnership opportunities.

This event will take place at the second annual DBE Summit hosted by Caltrans at SoFi Stadium in Inglewood, CA.

Caltrans, Metro, and partnering agencies will also be in attendance providing information to public works subcontractors, contractors, suppliers and consultants who are eligible to become or are currently certified a DBE.

Date: Tuesday | June 21, 2022, from 9 AM to 4 PM

Location: SoFi Stadium, Inglewood, CA

Register Today: <https://itcmeettheprimesevent.eventbrite.com>



MetroConnect

Our commitment to small business success.



SoFi Stadium

Caltrans

Using Zoom & Submitting Questions



This meeting is being recorded. Video file will be posted on our web site at **metro.net/crenshaw**



Public video and mics are disabled. We cannot hear you or see you.



Please ask questions and submit comments via the Q&A feature.

Project Overview

Walsh Shea Corridor Constructors (WSCC)

Main Line & Stations Contractor

- 8.5-mile light-rail servicing the cities of Los Angeles, Inglewood, and El Segundo
- 8 new stations:
 - 3 underground
 - 4 at-grade
 - 1 aerial
- Anticipated opening date: Fall 2022
**If the WSCC meets its current schedule*



K Line Substantial Completion

March 2022

- K Line achieved substantial completion for two-thirds of the alignment, from the C Line to 48th St./Crenshaw Bl.
- Metro has begun pre-revenue testing activities including training operations and maintenance staff
- In the near future, WSCC is expected to turn over to Metro the remaining segment along Crenshaw Bl.



K Line Initial Operating Segment

- Due to construction of AMC, the K Line will open an initial operating segment with seven stations operating between Expo/Crenshaw to Westchester/Veterans Stations.
- A bus service will link the K Line at Westchester/Veterans Station to the C Line at Aviation/LAX Station.
- The new Aviation/Century Station will not be served by trains or bus service until full line operations begin in early 2024 once the AMC Station platform structure has been completed.



Aviation/Century Station

Aviation Bl at Century Bl



Station canopy and station plaza under construction



Station platform under construction



Elevator under construction

Aviation/Century Station

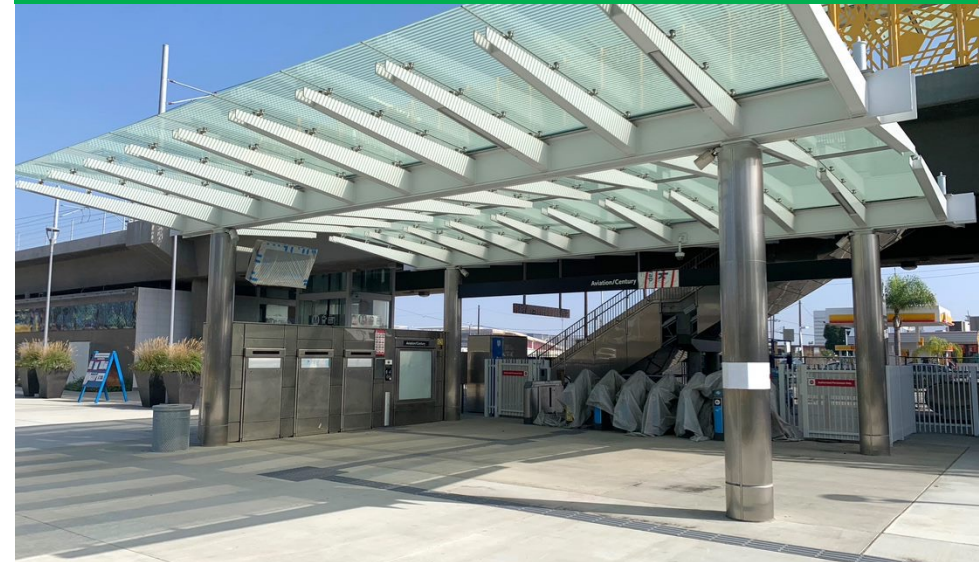
Aviation Bl at Century Bl



Station platform and signage



Station plaza



TVM, map casings, and fare gates

Westchester/Veterans Station

Florence Av and Hindry Av



Split-platform station under construction



TVM canopy under construction



Station platform under construction

Westchester/Veterans Station

Florence Av at Hindry Av



TVM canopy, Overhead Catenary System (OCS), railway track, and signage



Platform entrance and Ticket Vending Machine



Station platform, signage, and artwork

Downtown Inglewood Station

Florence Av and La Brea Av



Station platform and plaza under construction



TVM canopy under construction



Bus Transfer Facility under construction

Downtown Inglewood Station

Florence Av at La Brea Av to Hillcrest Bl



Station pylon, TVM canopy, and plaza



Station entrance and turnstiles



Station platform and installed signage

Fairview Heights Station

West Bl and Redondo Bl



Station parking lot and TVM canopy under construction



Station platform under construction



Station parking lot under construction

Fairview Heights Station

West BI at Redondo BI



Ticket Vending Machine Canopy and bike locker



TVM canopy at western end of station



Station platform, benches, and bollards

Fairview Heights Station Parking Lot

Redondo Bl and West Bl

Background

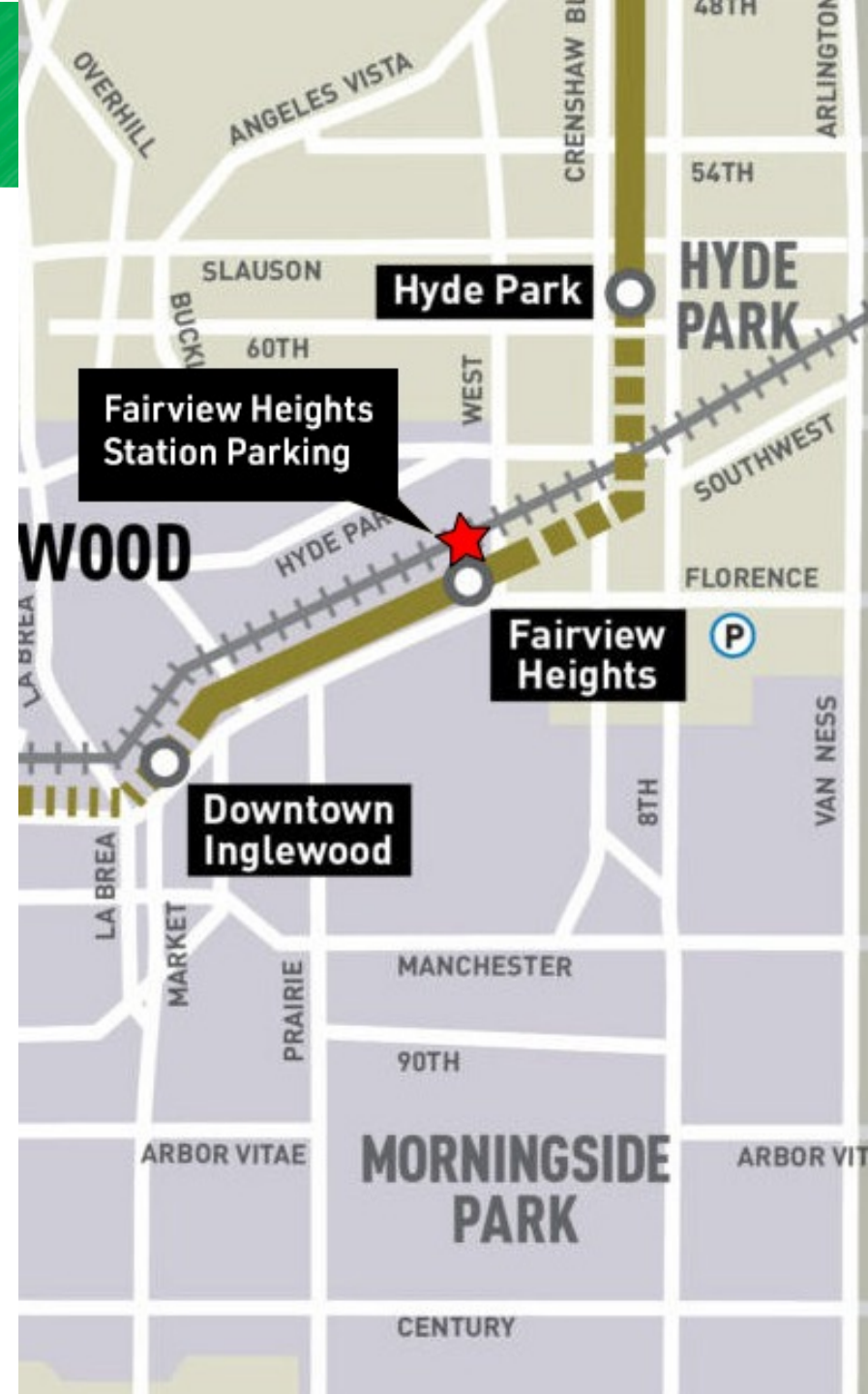
- In 2016, Metro pursued the acquisition of four buildings across the street from the Fairview Heights Station in order to meet its environmentally cleared number of parking spaces

Pre-Construction activities began March 2022:

- Abatement and demolition of four two-story structures
- Excavation of material onsite to rough grade
- Installation of stormwater drainage system

Future construction activities to be performed:

- Construction of a parking lot
- 119 parking spaces



Fairview Heights Station Parking Lot

Redondo Bl and West Bl

What to expect:

- Impacts to local traffic
- Noise and dust
- Partial sidewalk closure

Mitigation measures:

- Vehicular detours
- Pedestrian detours
- Sound blankets
- Water trucks
- Street sweeper

Outreach activities began February 2022:

- Construction Notices
- Project Stakeholder E-newsletter
- Social Media including NextDoor, Facebook, website
- Community Meetings and Key Stakeholder Briefings



Abatement Activities

Redondo BI and West BI



Abatement of roofing material



LACFD performing trainings



Workers removing glue that held flooring

Hyde Park Underground Tunnel – 60th St to 67th St



Underground portal toward tunnel



Underground tunnel



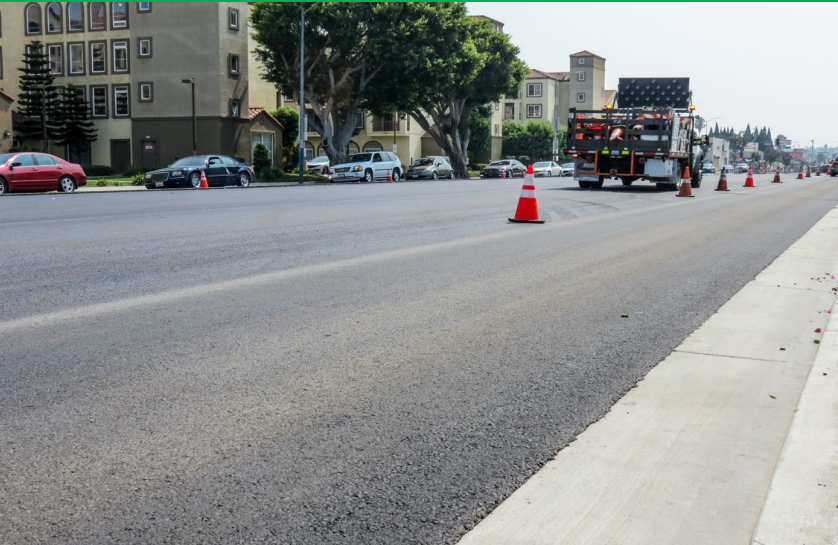
Hyde Park Underground Tunnel – 60th St to 67th St Tunnel Construction



Hyde Park Underground Tunnel – 60th St to 67th St



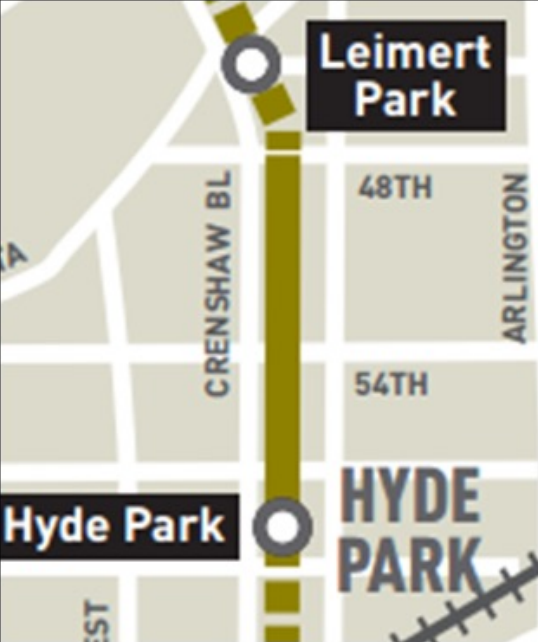
Crenshaw street restoration work



Completed Crenshaw street restoration

Hyde Park Station

Crenshaw Bl and Slauson Av



Aerial view of station

Hyde Park Station

Station Construction



Hyde Park Station



Station platform at Crenshaw Bl near 58th St



Restored and paved street of Crenshaw Bl near station

Park Mesa Heights At-grade Segment



Guideway at Crenshaw Bl and 54th St

Leimert Park Station

Crenshaw Bl and Vernon Av



Aerial view of station plaza

Leimert Park Station Area

Crenshaw Bl and Vernon Av



Backfill and decking removal operation at station area

Removal of steel beams during backfilling operation



Leimert Park Station



01/11/2016 09:30

Train portal between Leimert Park Station and 48th St



03/20/2017 07:40



11/28/2017 10:16

Concourse level frame and rebar installation



01/12/2016 08:07

Tier level 2 bracing

Leimert Park Station



Concourse level and fare gates



Station entrance



Station platform

Underground Tunnel



Underground Tunnel



Underground tunnel under construction

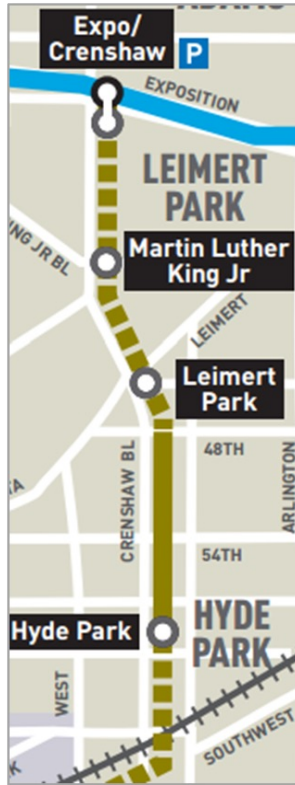


“Harriet” - Tunnel Boring Machine (TBM)



Martin Luther King Jr Station

Crenshaw Bl and King Bl



Aerial view of station plaza

Martin Luther King Jr Station



Excavated underground station



Concrete placement for concourse deck



Station plaza construction

Rebar installation for elevator shaft



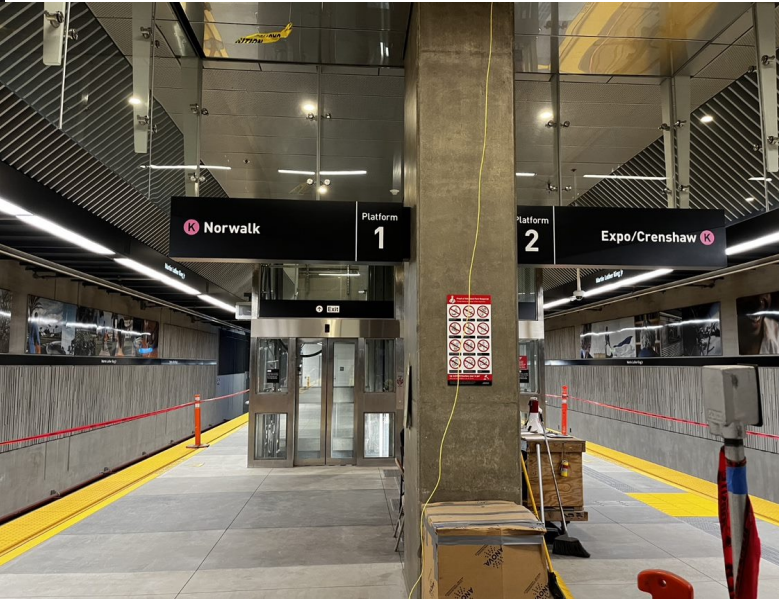
Martin Luther King Jr Station



Escalators and stairway from station plaza



Station plaza



Station platform

Expo/Crenshaw Station

Crenshaw Bl and Exposition Bl



Aerial view of station plaza

Expo/Crenshaw Station Area



Station backfill and decking removal operation

Street restoration of Crenshaw Bl



East wall construction

Expo/Crenshaw Station Area



Station plaza area



Street restoration at Crenshaw Bl and Obama Bl

Train Systems Testing

Metro to continue systems testing

- Testing and training for operations and maintenance staff
- Local Field Acceptance Test (LFAT)
- System Integration Test (SIT)
- Grade Crossing testing



Fire life safety testing for smoke alarms at Leimert Park Station

Emergency Response Exercises

- Series of emergency drills along project alignment
- Preparation and testing for emergency scenarios
- Emergency response personnel and actors involved
- Exercises performed May 20 – June 30, 2022
- Impacts:
 - Short term street closures
 - Sounds from sirens and machinery
 - Artificial/simulated smoke



Scenario testing for the emergency ventilation fan flow switch sensors

Upcoming Work Activities

Additional remaining minor work activities:

- Waterline/fire hydrant relocations
- Street paving at some locations
- Guard rail installation
- Left-turn gates installation

*These work activities will not impact the opening of the transit line.



Sacking and patching rail vehicle pads along southbound track

Art Program Tour



SHERIN GUIRGUIS | *Rise* | Aviation/Century Station



SHERIN GUIRGUIS | *Rise* | Aviation/Century Station



SHERIN GUIRGUIS | *Rise* | Aviation/Century Station



GEOFF MCFETRIDGE | *Us as a Measure of Openness* | Westchester Veterans Station



GEOFF MCFETRIDGE | *Us as a Measure of Openness* | Westchester Veterans Station



KENTURAH DAVIS | *Sonder* | Downtown Inglewood Station



KENTURAH DAVIS | *Sonder* | Downtown Inglewood Station



KIM SCHOENSTADT | *Inglewood CA Series: Metro Collection 1-10* | Fairview Heights Station



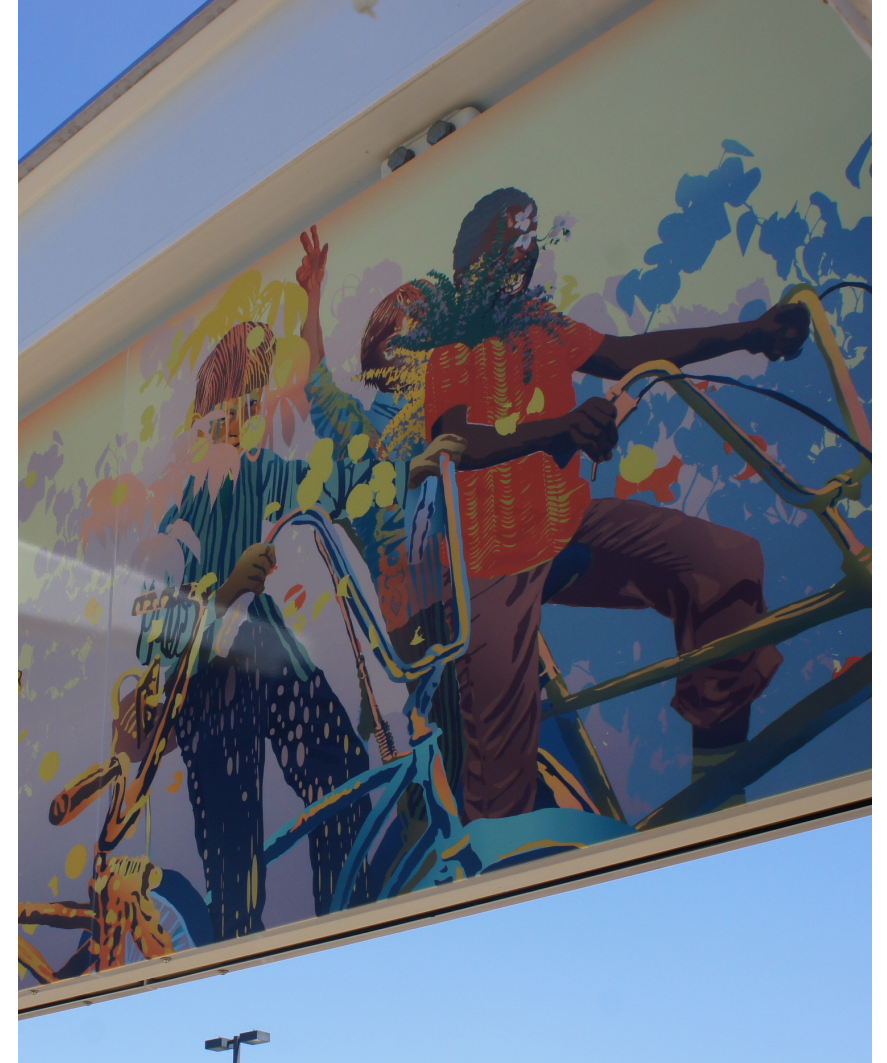
KIM SCHOENSTADT | *Inglewood CA Series: Metro Collection 1-10* | Fairview Heights Station



CARLSON HATTON | *Hyde Park Oasis* | Hyde Park Station



CARLSON HATTON | *Hyde Park Oasis* | Hyde Park Station



CARLSON HATTON | *Hyde Park Oasis* | Hyde Park Station



INGRID CALAME | *Talking Drums* / Leimert Park Station



INGRID CALAME | *Talking Drums* / Leimert Park Station



INGRID CALAME | *Talking Drums* / Leimert Park Station




DEAN ERDMANN | *Untitled* | Leimert Park Station



DEAN ERDMANN | *Untitled* | Leimert Park Station



A construction worker wearing a white hard hat with various stickers, safety glasses, and a blue face mask is peeling a piece of brown paper from a wall. The wall is covered in a mosaic mural. The worker is wearing an orange safety vest over a grey t-shirt. The background shows a construction site with wooden framing and other workers in the distance.

Paper facing is peeled away to reveal a mosaic mural by Mickalene Thomas.



MARA LONNER | *Leimert Park Landscape* | Martin Luther King Jr. Station



MARA LONNER | *Leimert Park Landscape* | Martin Luther King Jr. Station





EILEEN COWIN | *You are heading in the right direction* | Martin Luther King Jr. Station



ERWIN REDL | *Inside Out – Outside In – Inside Out* | Expo/Crenshaw Station



ERWIN REDL | *Inside Out – Outside In – Inside Out* | Expo/Crenshaw Station



ERWIN REDL | *Inside Out – Outside In – Inside Out* | Expo/Crenshaw Station



REBECA MENDEZ | *At the Same Time* | Expo/Crenshaw Station





JAIME SCHOLNICK | *Layered Histories* | Expo/Crenshaw Station



JAIME SCHOLNICK | *Layered Histories* | Expo/Crenshaw Station



metro.net/artsorgpool



CALL TO ARTS & CULTURAL ORGANIZATIONS

More Metro Art

Subscribe for Email Updates:

- *metro.net/art*

Follow us on:

- Facebook: **Metro Art Los Angeles**
- Instagram: **@metro.art.la**

Metro Photo Enforcement Program

Crenshaw Bl between 48th St and 59th St

- Cameras installed at the at-grade train crossings along Crenshaw Bl between 48th St and 59th St to monitor Left-turns.
- Aims to improve:
 - Vehicular & pedestrian safety
 - Mitigate potential train and auto accidents
- The program has been implemented on the A, L, G, and E Lines
- The program will be installed on all future light rail lines where dedicated left turn lanes exist



Left turn cameras on Crenshaw between 48th St and 59th St



Metro Photo Enforcement Program

Crenshaw Bl between 48th St and 59th St

- **Do all camera flashes result in a warning or citation?**
 - No, each incident is checked to determine if the images and video confirm a vehicle has entered the intersection on a red light
- **Why do the cameras flash even if a vehicle is not in the intersection?**
 - Remote testing activities and maintenance of the system
- **How does Metro manage the System?**
 - Metro contractor, Redflex Group has assigned Field Service Technicians working five days a week to maintain the system and trouble shoot any issues that may arise.
 - Remote monitoring



Traffic Enforcement Camera and Warning Sign at the Metro L (Gold) Line



Metro Photo Enforcement Program

Crenshaw Bl between 48th St and 59th St

- **July 1, 2022:** Traffic citations will be issued
 - Motorists who disobey traffic signals and operate vehicles in an illegal manner will begin receiving traffic citation in the mail.
 - Citations on the Metro program begin at \$100 plus penalties and assessments
- **October 1, 2021:** **eight**-month warning period began
 - After receiving community input, the warning period was extended until June 30, 2022, following a second awareness campaign
 - Motorists who operate vehicles in an illegal manner began receiving Warning Letters (no monetary fine) in the mail
- **September 1, 2021:** Initial Outreach efforts began
 - Construction Notices delivered door-to-door
 - Paid Print and Radio Media
 - Project Stakeholder E-newsletter
 - Social Media including NextDoor, Facebook, website
 - Community Meetings and Key Stakeholder Briefings

The image shows a sample of a Traffic Violation Warning Notice letter. At the top left is the Metro logo (a stylized 'M' in a circle) and the text 'Los Angeles County Metropolitan Transportation Authority'. To the right of the Metro logo is the text 'One Gateway Plaza Los Angeles, CA 90012-2952 213.922.3000 Tel metro.net'. In the center is the title 'Traffic Violation Warning Notice' and the Los Angeles County Sheriff's Department logo (a star with a scale of justice). Below the title is the text 'Los Angeles County Sheriff's Department Transit Services Bureau'. On the left side, the recipient's address is listed: 'MARK 56FGHFF TWAIN 5651 W TALAVI BLVD GLENDALE AZ 85306'. The main body of the letter contains several paragraphs of text explaining the program, the specific violation (license plate 56FGHFF), and providing contact information for questions. At the bottom, it states 'THIS IS NOT A CITATION' and 'Traffic Violation Warning Notice Only'.

Los Angeles County Metropolitan Transportation Authority

One Gateway Plaza
Los Angeles, CA 90012-2952
213.922.3000 Tel
metro.net

Metro

Traffic Violation Warning Notice

Los Angeles County Sheriff's Department
Transit Services Bureau

MARK 56FGHFF TWAIN
5651 W TALAVI BLVD
GLENDALE AZ 85306

The Los Angeles County Metropolitan Transportation Authority (MTA) and the Los Angeles County Sheriff's Department are dedicated to reducing the number of accidents, injuries, and fatalities associated with red light violations. In that regard, MTA and the Sheriff's Department have implemented a Photo Safety program to monitor and enforce violations at the Metro transit system crossings.

The program employs an automated traffic enforcement camera system. The cameras record violations as they occur during the red phase of the traffic signal. The camera system generates high quality photographs of the violation. Superimposed on each photograph are the date, time, location, amber time, and the length of the red signal.

The violation was photographed on **10/20/2021** at **11:18** by the automated traffic enforcement camera system. The vehicle with the license plate **56FGHFF** which is registered in your name, was photographed at **1.53** seconds after the red light was activated at the intersection of **Location description for LAM-CRS4-01** on the Crenshaw Line Crossing.

This is a warning only. This notice does not require a response from you. The Crenshaw Line Photo Enforcement Program is issuing warnings only from **October 1, 2021 to January 2, 2022.** **Effective January 3, 2022, actual Citations will be mailed out to violators.** We encourage you to discuss this information with anyone who drives your vehicle. Disobeying traffic control devices is a serious offense that can have fatal consequences.

If you have any questions regarding this warning notice, please contact the Traffic Violations Bureau toll free at (866) 527-9470 Monday through Friday between the hours of 8:00 a.m. and 5:00 p.m., excluding holidays.

Para instrucciones en Español por favor llame al telefono (866)-527-9470.

Los Angeles County Sheriff's Department
Transit Services Bureau
Photo Enforcement Unit

THIS IS NOT A CITATION

Traffic Violation Warning Notice Only

Sample Warning Enforcement Letter

Metro Photo Enforcement Program

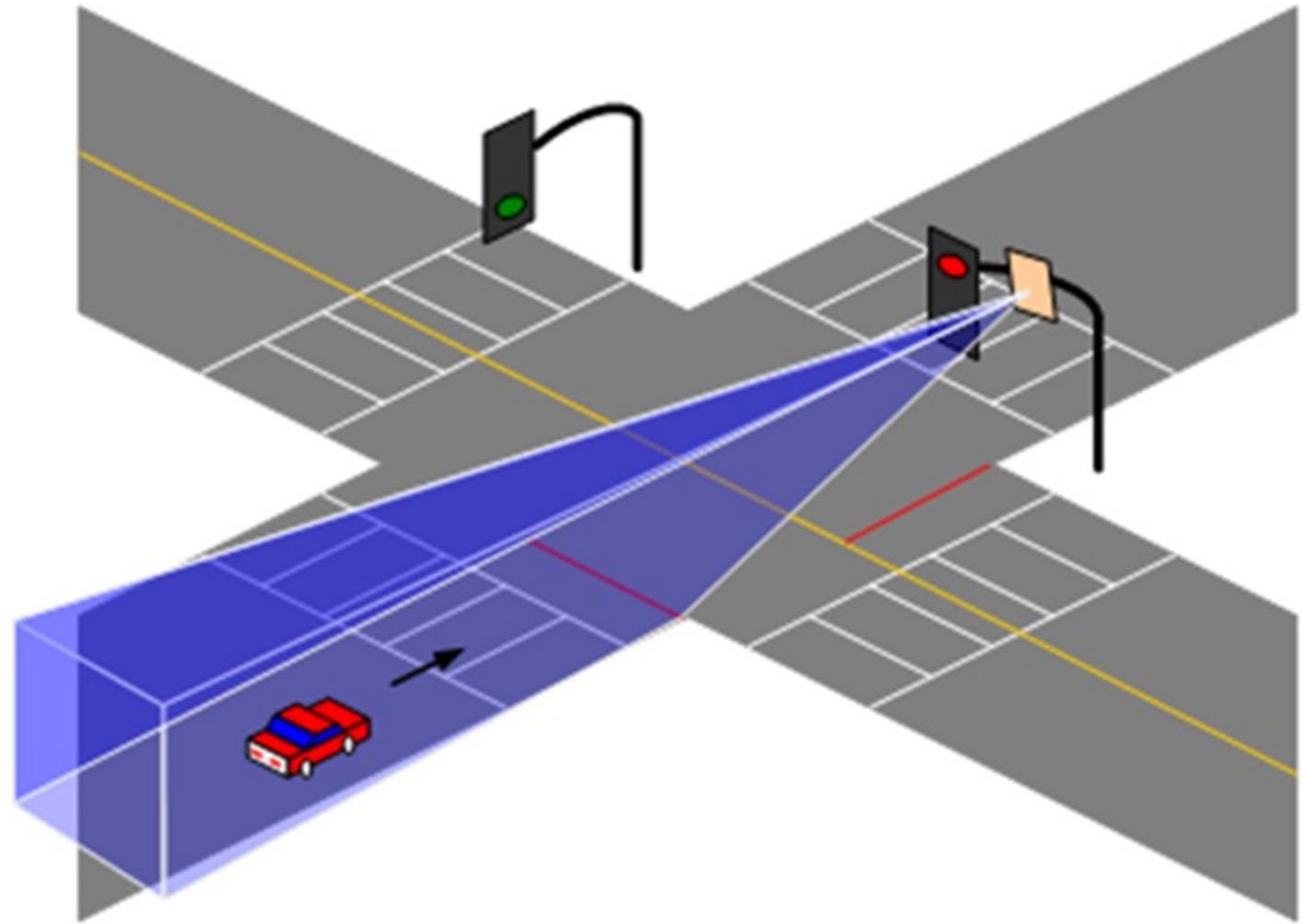
Crenshaw Bl between 48th St and 59th St



Billboard located at the SE corner of Crenshaw Bl and 57th St

How it Works

The system's radar tracks vehicles as they approach an intersection when the enforced lane has a red signal.



How it Works

If the vehicle is traveling at 7mph or greater and the light is red, an image is taken of the vehicle prior to crossing the violation line.



How it Works

A second image is taken after the vehicle crosses the violation line.

Location: LAM-CR54-03 SB to EB Crenshaw at 54th St Ver7.11.12.2
Date: Friday 29 October 2021 Time: 13:02:21 Event: 10 SB
Lane: 1 Vehicle Speed: 8 MPH Time into phase: 117.49 Elapsed Time: 1.88
Amber:3.60



How it Works

A third image is taken which is used to identify the driver as well as a 12 second video.



Metro Small Business Pilot Programs

Help small “mom and pop” businesses continue to thrive throughout construction and post construction

Metro Business Solution Center (BSC)

Metro Business Interruption Fund (BIF)



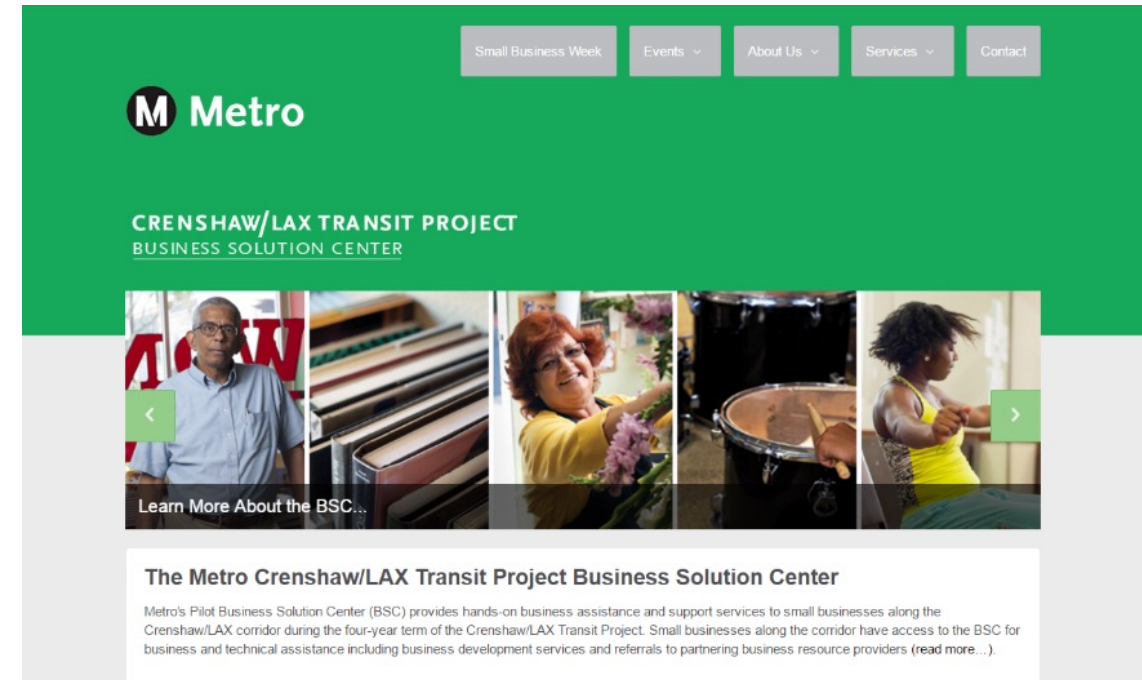
Business Solution Center K Line Transit Project

BSC Business Resources:

- Hands-on business development
- Expert business advice and coaching
- Technical assistance
- Referrals to expert professionals

BSC Program Statistics to Date:

- Over 400 business were contacted
- Over 300 business intakes/assessments
- Over 1,100 business referrals



The screenshot shows the website for the Metro Crenshaw/LAX Transit Project Business Solution Center. The header is green with the Metro logo and navigation links: Small Business Week, Events, About Us, Services, and Contact. Below the header, the text reads "CRENSHAW/LAX TRANSIT PROJECT BUSINESS SOLUTION CENTER". A carousel of images shows various people and activities, with a "Learn More About the BSC..." link. Below the carousel, the text reads "The Metro Crenshaw/LAX Transit Project Business Solution Center" and provides a brief description of the center's services.

Metro's Business Interruption Fund



BIF Information and Eligibility

- Financial assistance to small “mom & pop” businesses with 25 or fewer full-time employees directly impacted by Metro Rail construction along three project areas:
 - Crenshaw/LAX Transit Project
 - Purple Line Extension, Sections 1, 2 & 3
 - Regional Connector Project, Little Tokyo area & 2nd/Broadway Segment*
- Businesses must be located immediately adjacent to the rail corridor and meet other eligibility requirements
- Grant amounts are determined by business revenue loss directly related to period of Metro construction disruption
- Businesses may receive up to \$50,000 per impact year



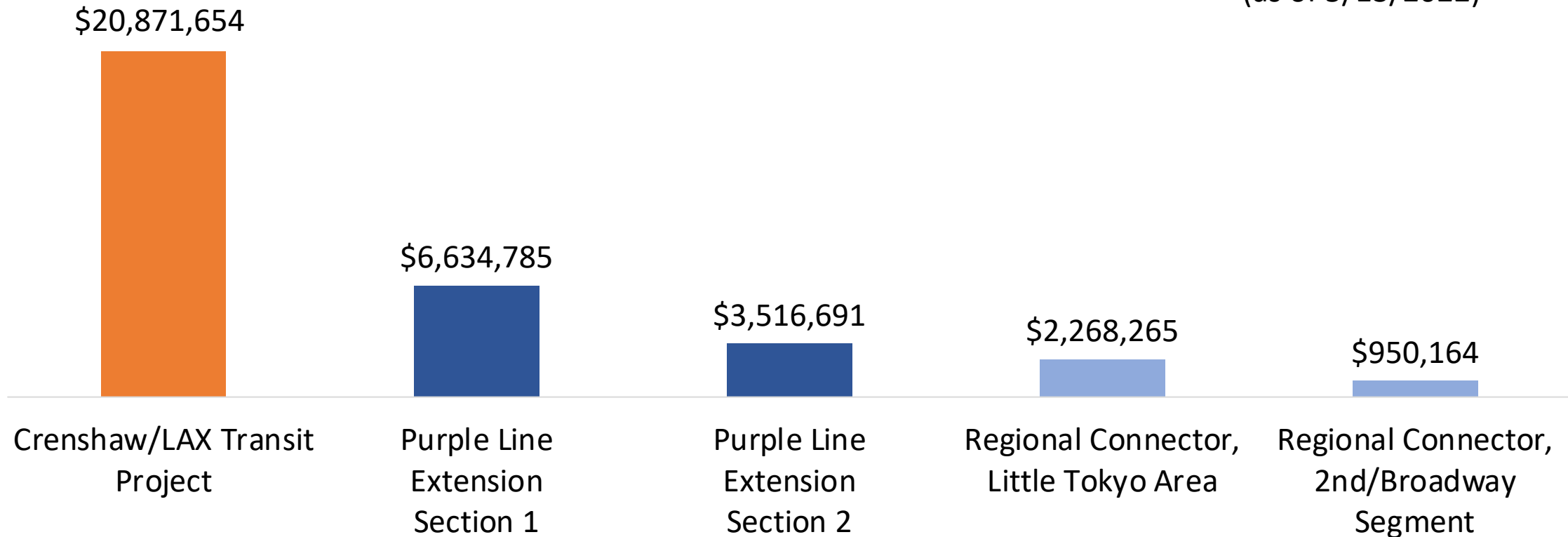
*Segment eligibility based on full street closure with duration greater than six continuous months. Eligibility ended 6/30/17.

Metro's Business Interruption Fund

Value of BIF Grants Awarded:
\$34,241,560*



(as of 5/13/2022)



***BIF Grants do not cover COVID-19 related impacts.**

BIF/BSC/ESP Closing Ceremony

K Line Transit Project



We highly encourage small business owners to connect.

Metro's Business Solution Center

- Small business owners may contact the BSC for more information:
 - Phone: (310) 981-7908
 - Website: metrobsc.net

Metro's Business Interruption Fund

- Potentially eligible small business owners may contact BIF Fund Administrator Pacific Coast Regional at:
 - Phone: (213) 739-2999 ext. 223
 - Email: bif@metro.net

Eat Shop Play Crenshaw & Inglewood

Eat Shop Play highlights local mom and pop businesses in Crenshaw and Inglewood, especially eateries and specialty businesses operating pick-up and delivery during the past months.

The Eat Shop Play Crenshaw and Inglewood programs continue supporting local businesses as construction progresses by promoting them through regular social media posts and newsletters to over 12,000 community members.



Learn More: www.metro.net/eatshopplay or email eatshopplay@metro.net



Featured Eat Shop Play Businesses

Ride On Bike Shop / Co-Op

- May is National Bike Month
- Bike repair, maintenance, sales, and rentals.
- Career and paid apprenticeship opportunities.
- Healthy and environmentally friendly.
- 4319 Degnan Bl
- (323) 903-5043
- [Rideonbikeshop.com](https://rideonbikeshop.com)



Crenshaw/LAX Transit Project

May 11 at 12:00 PM · 🌐

Refresh your ride with the tools, accessories, and expertise at [Ride On Bike Shop Co-Op](#). Whether you are a new or veteran rider, stop by for their bike repair, maintenance, sale, and rental services.

[#EatShopPlay](#) [#Crenshaw](#)

Support Local Businesses

<https://bddy.me/3w2t00o>



Featured Eat Shop Play Businesses

The Sammiche Shoppe

- Lunch Meet-Up Feb. 4, 2020
- Healthy and delicious F.A.S.T. food
- Signature Lucy Mae air fried chicken sammiche.
- Catering, delivery, and vegetarian options.
- 222 E Regent St
- (424) 331-5378
- www.sammicheshoppe.com



Eat Shop Play

Metro's Eat Shop Play program supports local businesses as we build more rail for LA. Participation is free. Businesses located along Metro Rail construction projects are eligible to sign up for marketing assistance. Benefits to Local Businesses include Print/digital ads and Social media and email marketing.

Sign up

Rail Safety & Mobility Programs



Who is CEMP?

Metro's Rail Safety & Mobility Programs Team is responsible for increasing transit safety awareness and providing education to residents of Los Angeles County who interact with Metro's public transportation system through various safety programs. This includes safety on Metro's rail lines, bus system, and bicycles.



Metro Rail Safety & Mobility Programs is mandated by the CA Public Utility Commission to provide education to communities within in light rail lines.

Rail Safety Programs

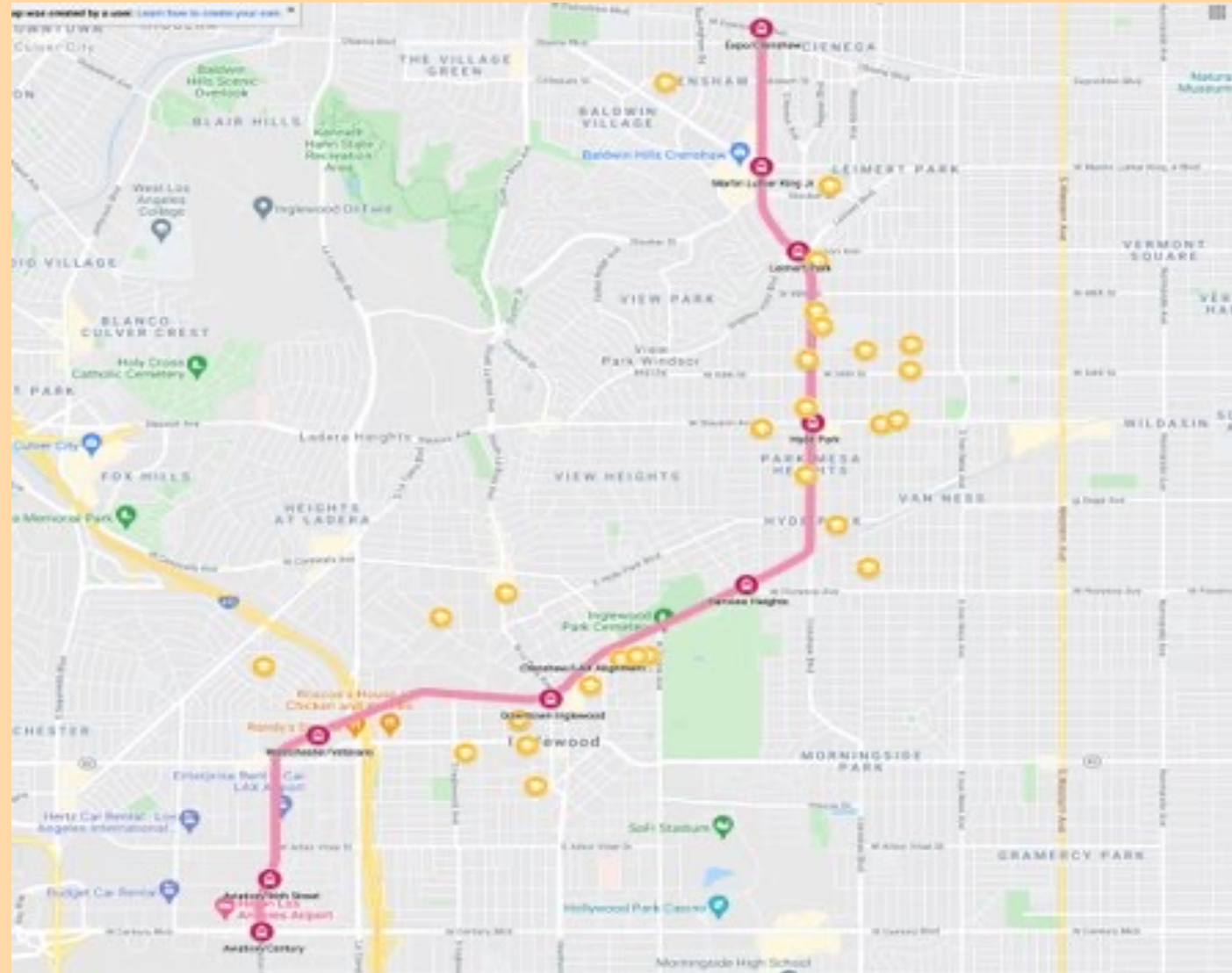
MCE provides safety presentations to all schools K-12 within a 0.5 mile radius of the A, E, L and K Lines.

K Line Total Number of Schools: 31

Outreach to all community/recreation centers, libraries and senior centers within a 1.5 mile radius.



Metro



RSP – South Bay Team



Jacqueline Gonzalez
Manager



Brittany Mullins
Principal Community
Relations Officer

K Line Schools

Alliance Ouchi-O'Donovan

Crete Academy

Marcus Garvey School

Alliance Renee & Meyer Luskin Academy High School

Crozier Middle School

Open Magnet Charter School

Alliance Virgil Roberts Leadership Academy

Highland Elementary School

Saint John Chrysostom Catholic School

Angeles Mesa Elementary School & DREAMS Magnet

Hudnall Elementary School

Slauson Learning Center, No. 1

Audubon Middle School

ICEF Inglewood Elementary Charter Academy

Slauson Learning Center, No. 2

CATCH Prep Charter High, Inc.

ICEF View Park Preparatory Elementary School

St Mary's Academy

City Honors International Preparatory High School

ICEF View Park Preparatory High School

The Grace Hopper STEM Academy

Coliseum Street Elementary

ICEF View Park Preparatory Middle School

Today's Fresh Start Charter School

Crenshaw High School STEAM Magnet

Inglewood High School

Whitney Young Continuation High School

Crenshaw Montessori Academy

Islah Academy

Wilder's Preparatory Academy Charter School

YES Academy (Young Empowered Scholars)



Metro

Virtual Programming



RSP Workshop

- Line Specific Information (A, E, L Rail Lines)
- Train Safety
- Utilizing the Metro System



Union Station Tour

- History of Union Station
- Transit Located at Union Station
- Future of Union Station



B (Red) Line Destination Tour

- Overview of Metro System
- Specific Destinations along B – Line
- How to Ride Metro



Bike Safety Classes

- Review of bike safety tips
- Bike maintenance



Metro®

Virtual Engagement



A virtual engagement presentation slide for Metro. On the left is a cartoon character of a young boy with brown skin, wearing a purple jacket and grey shorts. To his right is a yellow and grey Metro Rail train. Below the train are four icons: a red hand, a black circle with a white train, a red circle with a white bar and the text 'DO NOT ENTER', and a black circle with a white train. Below these are four traffic signs: a red circle with a white bar and 'DO NOT ENTER', a white X-shaped sign with 'RAIL CROSSROAD', a yellow diamond sign with a train and 'LOOK BOTH WAYS', and a white rectangular sign with 'STOP HERE ON RED' and a black arrow pointing down. On the right side of the slide is a grid of 20 video thumbnails showing children in a virtual meeting, with one thumbnail labeled 'Mark Arroyo'. At the bottom left is the Metro logo (a black circle with a white 'M') and the word 'Metro'. At the bottom center is the text 'Obey All Traffic Signs and Signals'.

M Metro

Obey All Traffic Signs and Signals

Rail Safety Advisor Program

RSAs are retired bus and rail operators who are temporarily employed to observe and record behaviors of pedestrians and motorists around grade crossings.



Metro®

Virtual Interaction Opportunities

Please consider inviting the RSP Team to participate in:

- Career Day
- Back to School Nights
- Incorporate Metro when teaching Sustainability, Engineering or Mechanics
- Parent Meetings and Workshops
- Community and School Events
- Coffee with the Principal Meetings
- **Bicycle Education Safety Training**
- **Metro Youth Council**

*All activities above are currently being conducted via virtual platforms



Metro[®]

On the Move Riders Program



How to Ride Metro *Cómo viajar en Metro*

1 Plan Your Trip

Here's where to find schedule information on Metro Rail, Metro Local, Metro Rapid, Metro Express and Metro Liner service.

Use the Metro Trip Planner at metro.net

For assistance: Call 323.664.3876

Metroliner and Connections Available on board Metro buses and trains at Customer Centers and stations, and online

| | |
|------------------------|-------------------------|
| Regular fare | 886.956.5476 (7233) |
| Security | 213.922.4226 |
| Customer Relations | 323.927.8929 |
| Lost and Found | 886.621.7828 |
| Wheelchair Access | 311 |
| Customer Relay Service | 213.680.0954 |
| Metroliner Fare Office | 844.TAP.FARE (827.8444) |
| TAP Service Center | 844.827.8666 |
| Customer Support | 213.922.2811 |

2 Pay Your Fare

To pay your fare in stations, select an option from the TAP vending machine

- One-way for a single boarding on a single line
- Day Pass, 7-Day Pass, 30-Day Pass for all day travel on Metro Rail
- Metro-to-Muni Transfer for transfer to a non-Metro connecting agency
- Select the Senior/Disabled/Medicare option if you have valid proof of age or disability

Fare is dispensed on a reloadable TAP card. Tap the card on the turnstile or validator at stations or the farebox on buses. TAP cards are also available for purchase at Metro Customer Centers, Metro pass sales outlets, and online.

Two children under age 5 may travel free with each fare-paying adult on Metro bus or rail.

3 Hop on Board

After boarding on Metro Rail or Metro Local, please mark your TAP card on the farebox marked with the line you are boarding. If you are boarding on Metro Express or Metro Liner, please mark your TAP card on the farebox marked with the line you are boarding. If you are boarding on Metro Rapid, please mark your TAP card on the farebox marked with the line you are boarding. If you are boarding on Metro Rapid, please mark your TAP card on the farebox marked with the line you are boarding.

uno Planee su viaje

Para pagar en las estaciones, seleccione una opción de la máquina vendedora de TAP.

- Boleto de ida para un solo viaje en una sola línea
- Day Pass, 7-Day Pass, 30-Day Pass para viajes durante todo el día en líneas de autobús y trenes de Metro
- Transbordo de Metro-a-Muni para transbordar a líneas municipales
- Seleccione la opción de persona mayor/discapacitada/Medicare si tiene prueba válida de su condición

Su pasaje será agregado a una tarjeta TAP reusable. Toque su tarjeta al sello en el torniquete o validador en las estaciones de Metro Rail o en la máquina para pasaje en los autobuses de Metro. Las tarjetas TAP también son disponibles en los centros para clientes de Metro, locales de venta y por Internet en metro.net

Los niños menores de 5 años pueden viajar gratis por cada pasaje de adulto en autobuses o tren.

dos Pague su pasaje

Después de pagar el pasaje, mantenga su boleto para mostrarlo a los inspectores, quienes hacen directrices y recomendaciones de seguridad

- Las bicicletas están permitidas en Metro
- Camine siempre con su bicicleta en la plataforma
- Ingrese por las puertas marcadas con esta señal
- Párese con su bicicleta en el área designada
- Permita que otros pasajeros salgan e ingresen que usted aborde
- Déle prioridad a los pasajeros en silla de ruedas y otros pasajeros con discapacidades
- Siempre use los pasamano y las manijas de apoyo
- No bloquee las puertas o pasillos

tres Venga aboard

Norma del Título VI
Metro se compromete a asegurar que ningun participante o sea negada los beneficios de raza, color, origen nacional, sexo, edad o discapacidad para más información.

On the Move Riders Program

On the Move Riders Program enhances and improves senior mobility throughout LA County through:

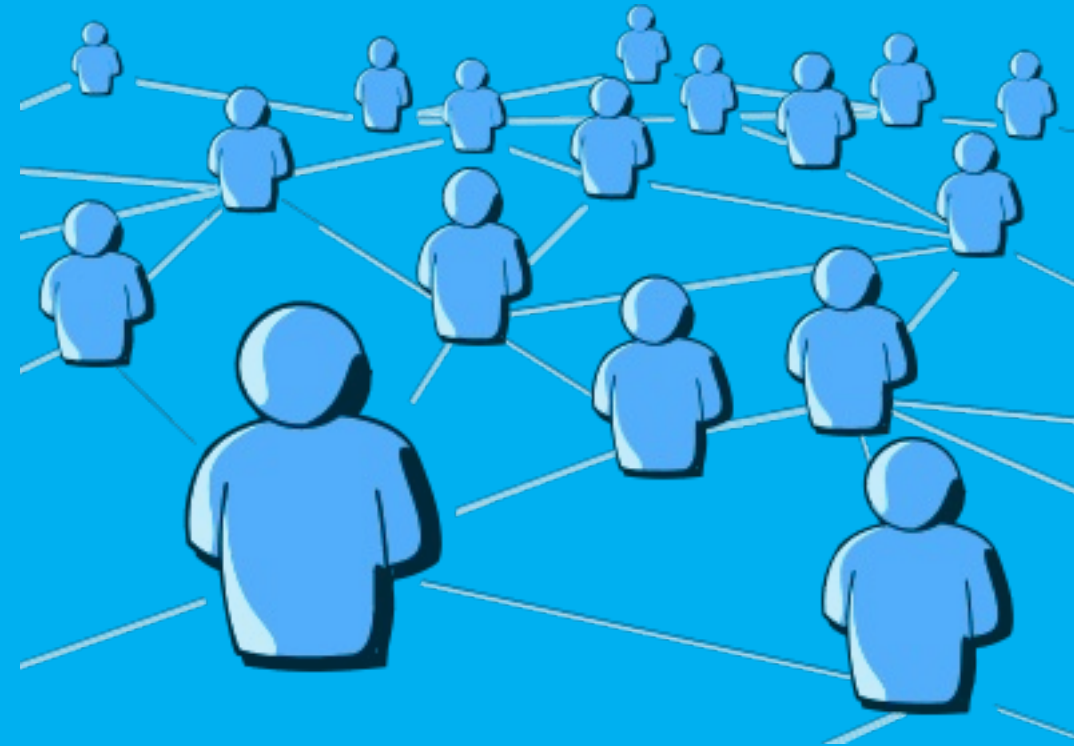
- Educational presentations
- Transit oriented events & resources
- Travel training tours
- Peer-to-peer travel training clubs



On the Move Riders Program

Upcoming Events

- **May 20th** – Westside/Central Pop-up Santa Monica Wise & Healthy Aging – In person*
- **June 29th** – Annual Older Adult Transportation Expo – In person*



On the Move

RIDERS PROGRAM



213.922.2002



onthemove@metro.net



metro.net/onthemove



Metro®

Contact Information

Jackie Gonzalez
MCE Manager

gonzalezj10@metro.net

Brittany Mullins
MCE PCRO

MullinsB@Metro.net

Rail Safety Programs

<https://www.metro.net/about/metro-student-field-trip/>

On The Move Riders Program

<https://www.metro.net/around/senior-tips/move-riders-club/>




Metro

Nearby Metro Projects

Airport Metro Connector Transit Station (AMC)

Contact Us

-  213.922.4998
-  laxconnector@metro.net
-  metro.net/laxconnector
-  [@laxconnector](https://twitter.com/laxconnector)
-  [laxconnector](https://www.facebook.com/laxconnector)



Centinela Grade Separation Project

Contact Us

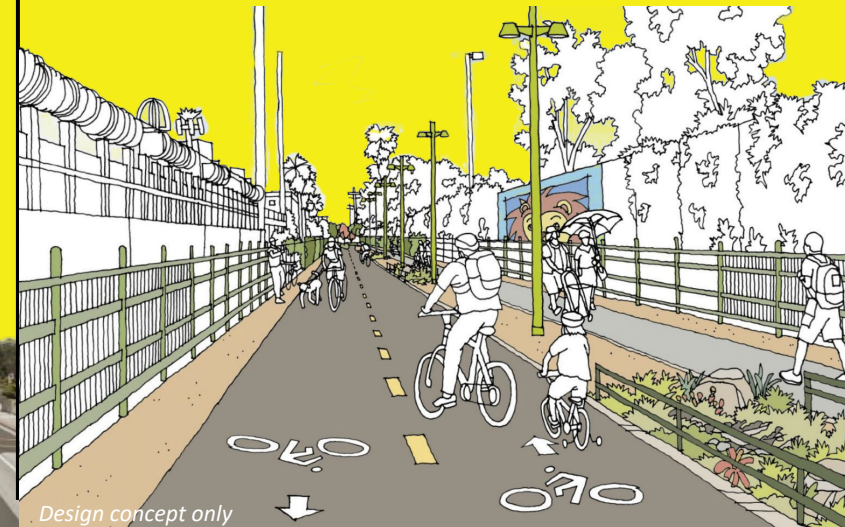
-  213.922.2426
-  Mark Dierking, dierking@metro.net
-  metro.net/projects/centinela



Rail to Rail Active Transit Corridor Project

Contact Us

-  213.922.9228
-  r2r@metro.net
-  metro.net/r2r



Using Zoom & Submitting Questions



This meeting is being recorded. Video file will be posted on our web site at **metro.net/crenshaw**



Public video and mics are disabled. We cannot hear you or see you.



Please ask questions and submit comments via the Q&A feature.



Q&A

Thank You, Please Connect With Us



213.922.2736



crenshawcorridor@metro.net



metro.net/crenshaw



@crenshawrail



crenshawrail