



WESTSIDE SUBWAY EXTENSION PROJECT

Addendum to the Transportation Impacts Technical Report



August 2011

SUMMARY

On October 28, 2010, the Metro Board selected the Westwood/Veterans Affairs (VA) Hospital Extension (Alternative 2 in the Draft Environmental Impact Statement/Environmental Impact Report (EIS/EIR)) as the Locally Preferred Alternative (LPA) and authorized the preparation of the Westside Subway Extension Final EIS/EIR to analyze the LPA. This alternative will extend heavy rail transit (HRT), in subway, approximately 9 miles from the existing Metro Purple Line Wilshire/Western Station to a Westwood/VA Hospital Station. A detailed description of the LPA is provided in Chapter 2 of the Final EIS/EIR.

This addendum supplements materials in the *Westside Subway Extension Project Transportation Impacts Technical Report* dated August 2010 and supports the Final EIS/EIR. The LPA is referred to as Alternative 2 in that Report and all updates in this addendum replace “Alternative 2” or “Alt 2” with “Locally Preferred Alternative” or “LPA.” Unless stated otherwise in this addendum, all descriptions in the previous report also apply to this addendum. In any case where this addendum differs from the report (or any previous addenda to the report), the information in this addendum supersedes that of the report (and any previous addenda to the report).

This addendum includes updated, changed, and added data/information that supports changes to the Final EIS/EIR, based upon the following:

- New analysis, such as revised ridership model outputs
- Newly available information, such as updated existing study area bus ridership
- Changes to the project description (Chapter 2 of the Final EIS/EIR)
- Updated data/information resulting from response to public comments on Chapter 3 of the Draft EIS/EIR
- Supplemental information from transportation technical studies that were carried out following publication of the Draft EIS/EIR

The *Westside Subway Extension Project Transportation Impacts Technical Report* encompasses information from the following technical reports:

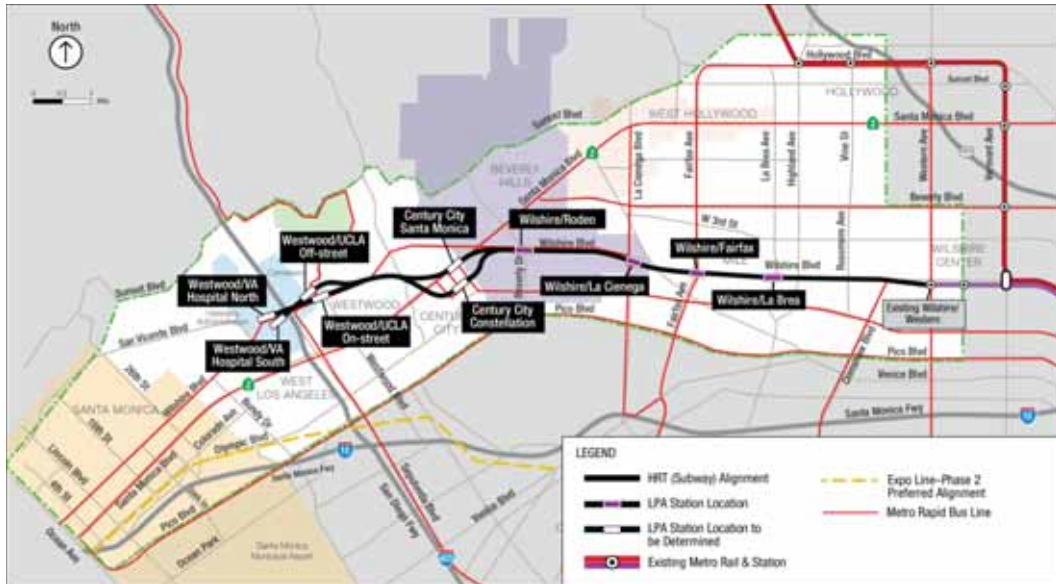
- *Traffic Analysis Impact Report* (August 2010)
- *Parking Impacts and Policy Plan* (August 2010)
- *Transit Impact Assessment Report* (August 2010)

Separate addenda have not been prepared for these other transportation technical reports. Any updated, changed, and added data/information included in this addendum also applies to the aforementioned transportation technical reports.

1.0 EXECUTIVE SUMMARY

Change The following graphic is a modification of Figure 1-1 and replaces this figure:

Figure 1-1. Westside Subway Extension Study Area, Alignment, and Proposed Stations



1.1 Station Area Maps

Change The following graphics are modifications of Figures 1-3, 1-4, 1-6, 1-8, 1-9, 1-10, 1-11, 1-12, 1-13, and 1-14 and replace these figures, respectively.

Figure 1-3. Wilshire/La Brea Station

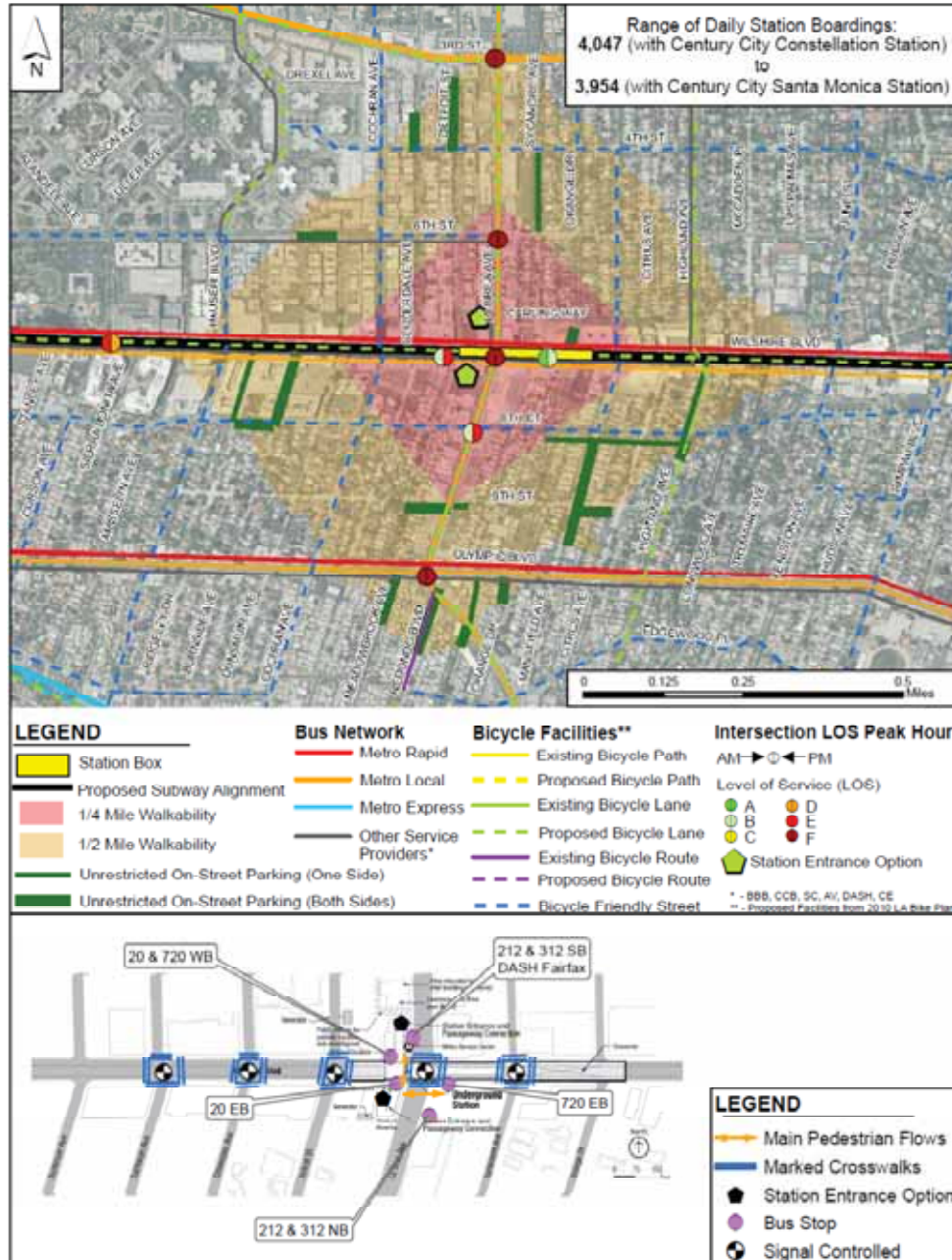


Figure 1-4. Wilshire/Fairfax Station

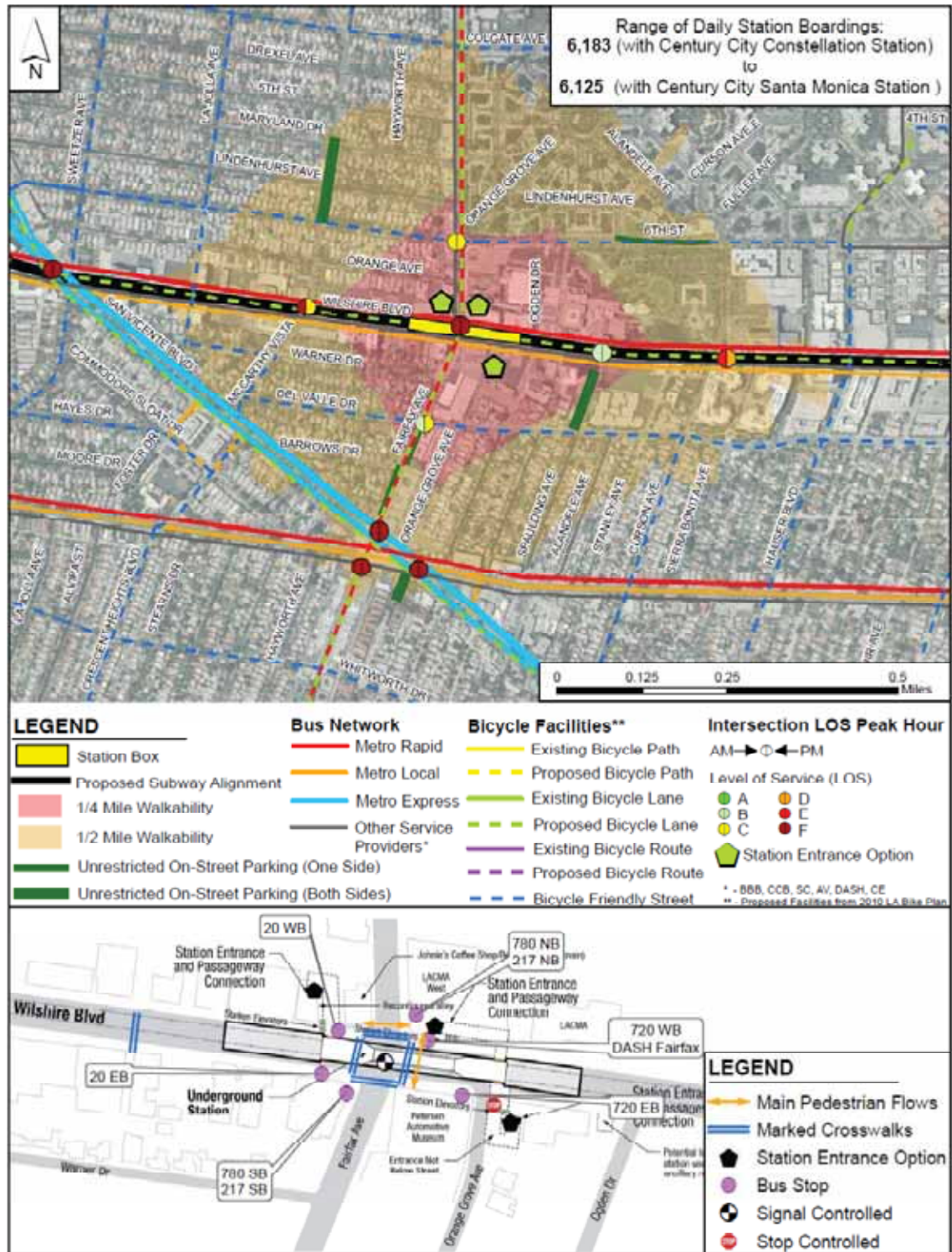


Figure 1-6. Wilshire/La Cienega Station

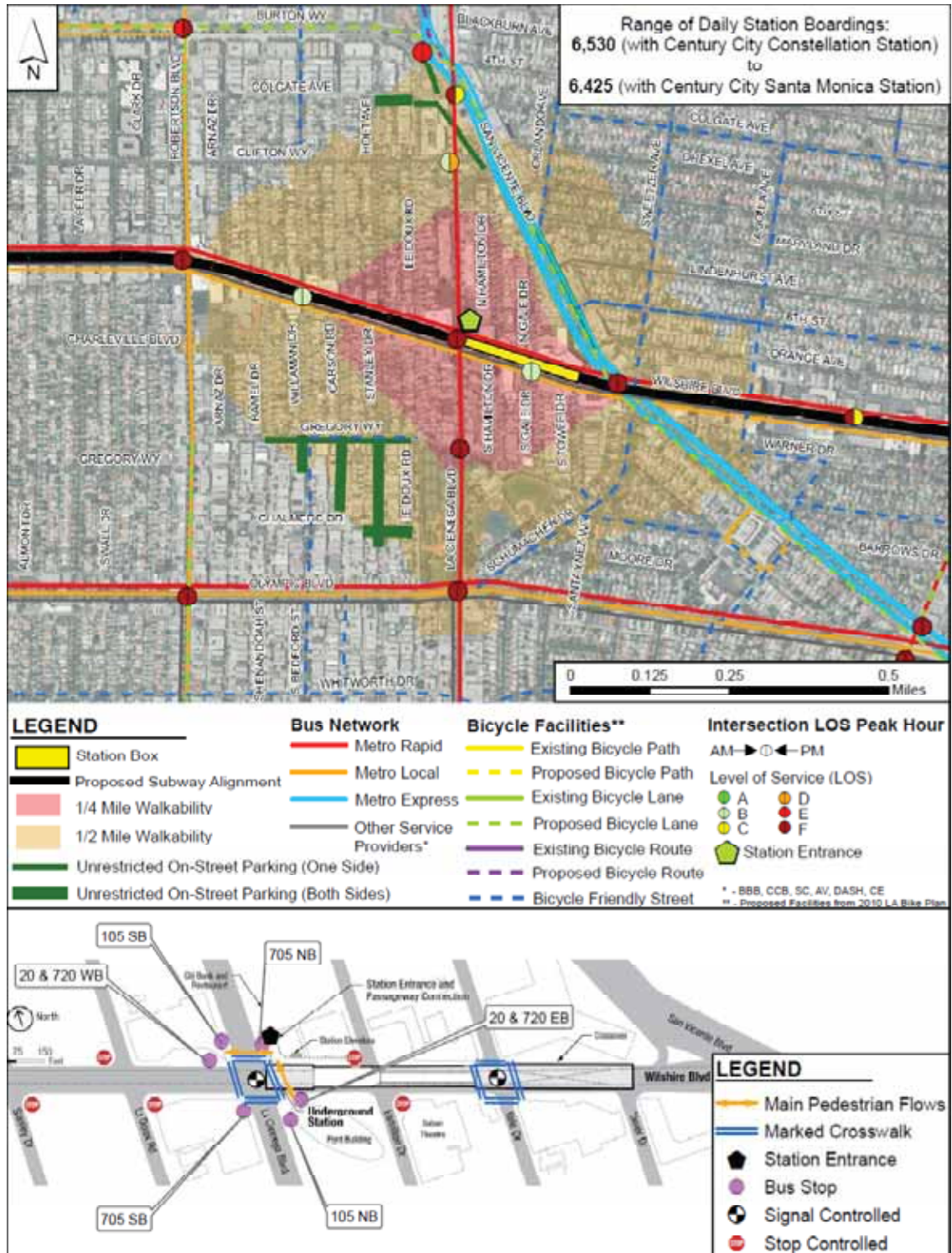


Figure 1-9. Century City Santa Monica Station

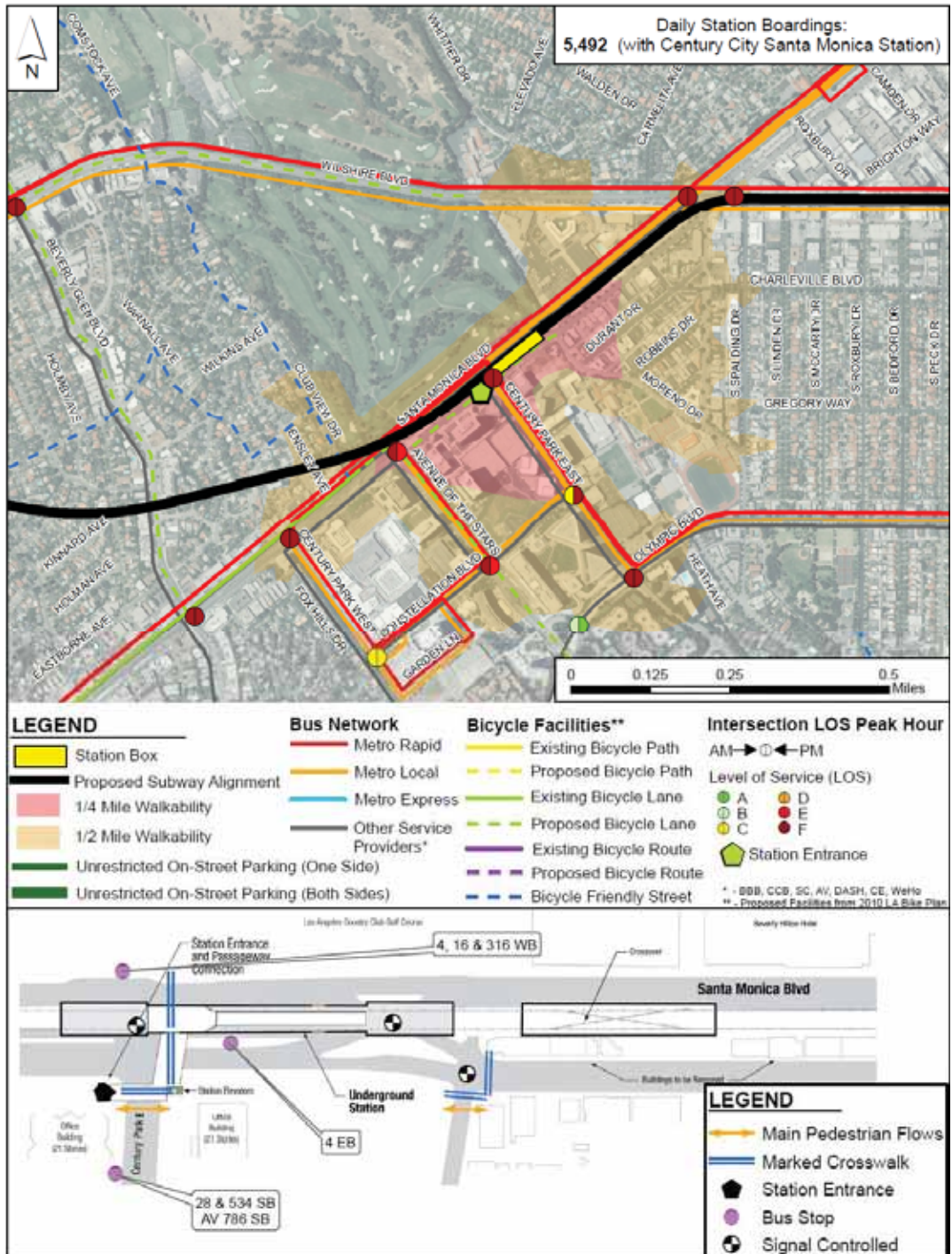


Figure 1-10. Century City Constellation Station

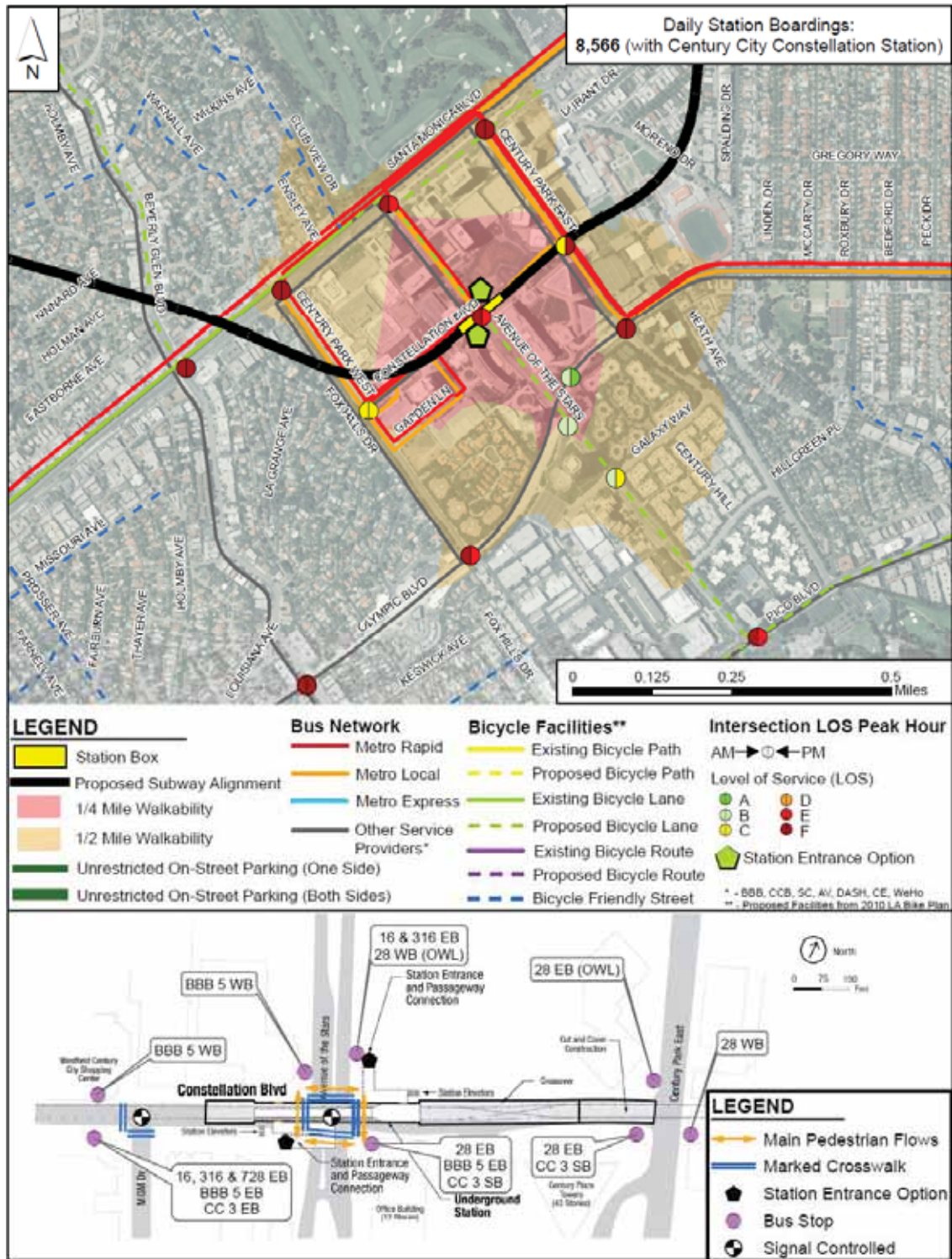


Figure 1-11. Westwood/UCLA Off-Street Station

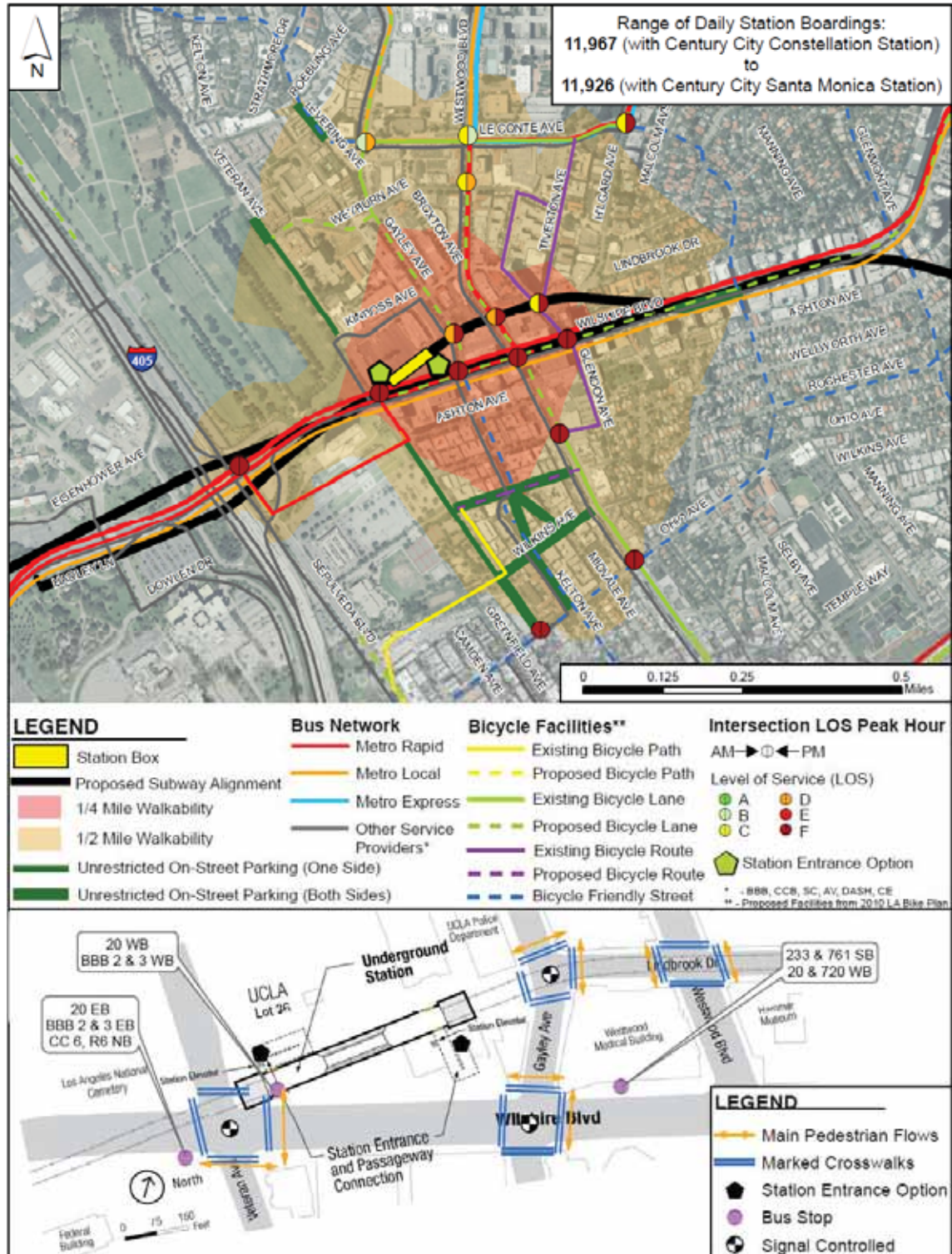


Figure 1-12. Westwood/UCLA On-Street Station

