

We're lorem ipsum dolor sit amet, consectetur adipiscing elit.

PROJECT NAME Fact Sheet

Lorem Ipsum Lorem

Sample of body text style 10/13 et dolor si dolut res quia qui sed modia doles aliquae volorestrum dis et doluptasperi doluptam fugiat voluptate alibea eariossi ommo es autem laut volorro rectian danime nobitissum quis maximint aut laborio es maximusape nis modia voluptum quat.

Sample of body text style 10/13 et dolor si dolut res quia qui sed modia doles aliquae volorestrum dis et doluptasperi doluptam fugiat voluptate alibea eariossi ommo es autem laut volorro rectian danime nobitissum quis maximint aut laborio es maximusape nis modia voluptum quat.

Sample of body text style 10/13 et dolor si dolut res quia qui sed modia doles aliquae volorestrum dis et doluptasperi doluptam fugiat voluptate alibea eariossi ommo es autem laut volorro rectian danime nobitissum quis maximint aut laborio es maximusape nis modia voluptum quat.

Lorem Ipsum Lorem

Sample of body text style 10/13 et dolor si dolut res quia qui sed modia doles aliquae volorestrum dis et doluptasperi doluptam fugiat voluptate alibea eariossi ommo es autem laut volorro rectian danime nobitissum quis maximint aut laborio es maximusape nis modia voluptum quat.

Sample of body text style 10/13 et dolor si dolut res quia qui sed modia doles aliquae volorestrum dis et doluptasperi doluptam fugiat voluptate alibea eariossi ommo es autem laut volorro rectian danime nobitissum quis maximint aut laborio es maximusape nis modia voluptum quat.

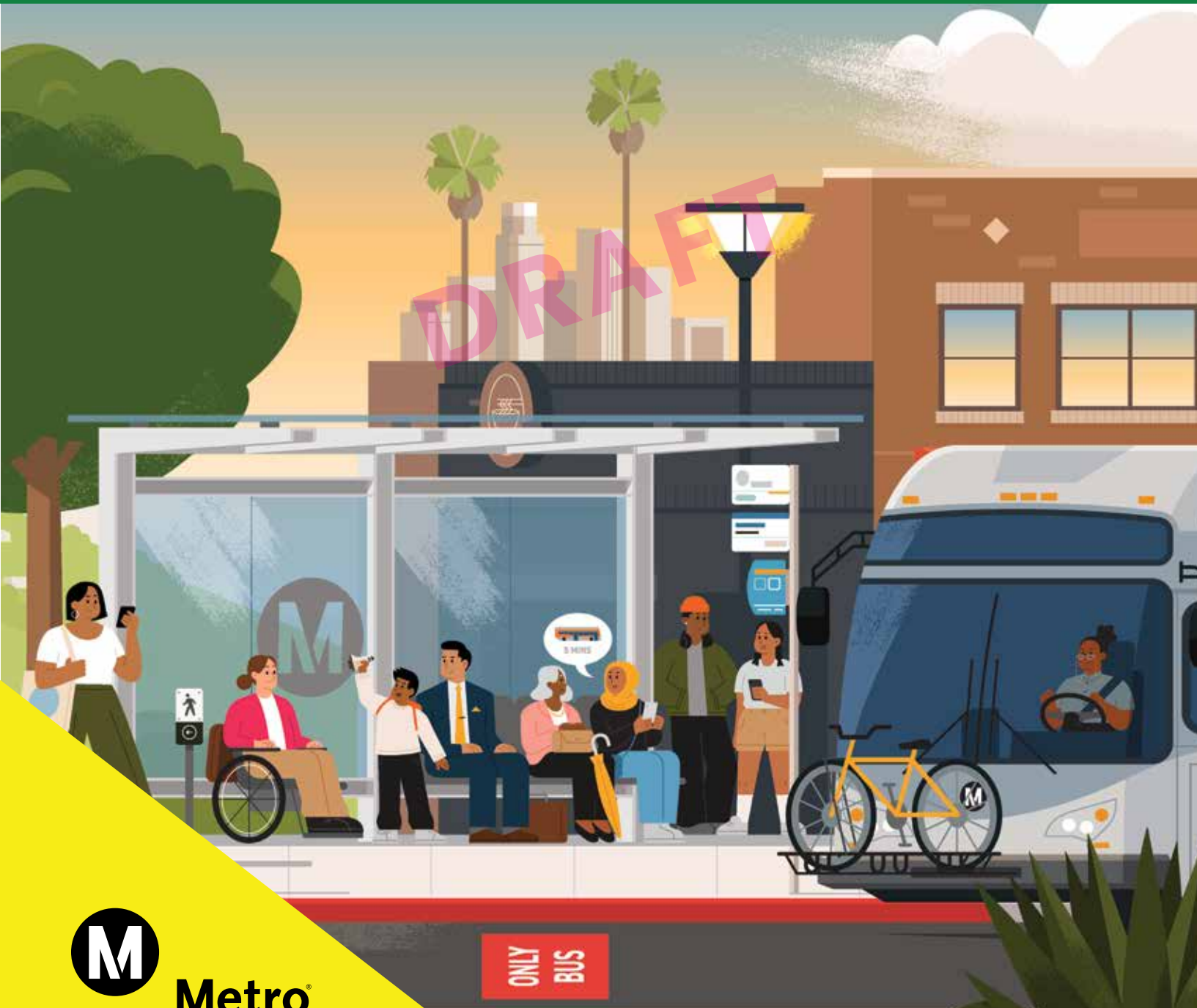
Sample of body text style 10/13 et dolor si dolut res quia qui sed modia doles aliquae volorestrum dis et doluptasperi doluptam fugiat voluptate alibea eariossi ommo es autem laut volorro rectian danime nobitissum quis maximint aut laborio es maximusape nis modia voluptum quat.

CONTACT US

For more information, questions, comments or requests to join the mailing list, please contact:

-  Name, Title
Metro
One Gateway Plaza, MS 99-xx-x
Los Angeles, CA 90012
-  213.922.xxxx
-  projectname@metro.net
-  metro.net/projectname

PLEASE RECYCLE THIS MATERIAL.
2-###-###-### @20## LACMTA



ONLY
BUS

Lorem Ipsum Lorem

Sample of body text style 10/13 et dolor si dolut res quia qui sed modia doles aliquae volorestrum dis et doluptasperi doluptam fugiat voluptate alibea eariossi ommo es autem laut volorro rectian danime nobitissum quis maximint aut laborio es maximusape nis modia voluptum quat.

Sample of body text style 10/13 et dolor si dolut res quia qui sed modia doles aliquae volorestrum dis et doluptasperi doluptam fugiat voluptate alibea eariossi ommo es autem laut volorro rectian danime nobitissum quis maximint aut laborio es maximusape nis modia voluptum quat.

Sample of body text style 10/13 et dolor si dolut res quia qui sed modia doles aliquae volorestrum dis et doluptasperi doluptam fugiat voluptate alibea eariossi ommo es autem laut volorro rectian danime nobitissum quis maximint aut laborio es maximusape nis modia voluptum quat.

Sample of body text style 10/13 et dolor si dolut res quia qui sed modia doles aliquae volorestrum dis et doluptasperi doluptam fugiat voluptate alibea eariossi ommo es autem laut volorro rectian danime nobitissum quis maximint aut laborio es maximusape nis modia voluptum quat.

Sample of body text style 10/13 et dolor si dolut res quia qui sed modia doles aliquae volorestrum dis et doluptasperi doluptam fugiat voluptate alibea eariossi ommo es autem laut volorro rectian danime nobitissum quis maximint aut laborio es maximusape nis modia voluptum quat.

Sample of body text style 10/13 et dolor si dolut res quia qui sed modia doles aliquae volorestrum dis et doluptasperi doluptam fugiat voluptate alibea eariossi ommo es autem laut volorro rectian danime nobitissum quis maximint aut laborio es maximusape nis modia voluptum quat.

Lorem Ipsum Lorem

Sample of body text style 10/13 et dolor si dolut res quia qui sed modia doles aliquae volorestrum dis et doluptasperi doluptam fugiat voluptate alibea eariossi ommo es autem laut volorro rectian danime nobitissum quis maximint aut laborio es maximusape nis modia voluptum quat.

Sample of body text style 10/13 et dolor si dolut res quia qui sed modia doles aliquae volorestrum dis et doluptasperi doluptam fugiat voluptate alibea eariossi ommo es autem laut volorro rectian danime nobitissum quis maximint aut laborio es maximusape nis modia voluptum quat.

Sample of body text style 10/13 et dolor si dolut res quia qui sed modia doles aliquae volorestrum dis et doluptasperi doluptam fugiat voluptate alibea eariossi ommo es autem laut volorro rectian danime nobitissum quis maximint aut laborio es maximusape nis modia voluptum quat.

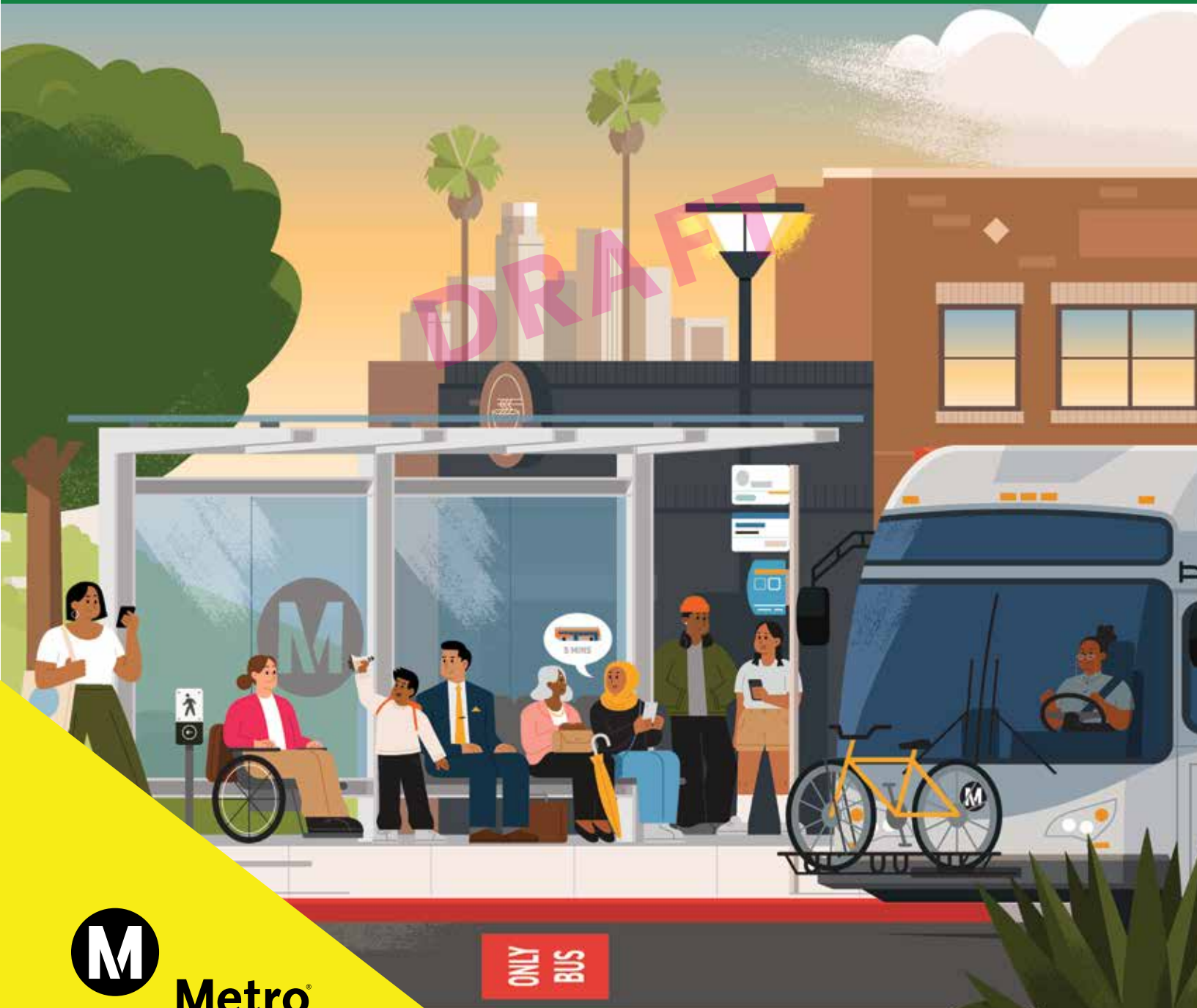
Sample of body text style 10/13 et dolor si dolut res quia qui sed modia doles aliquae volorestrum dis et doluptasperi doluptam fugiat voluptate alibea eariossi ommo es autem laut volorro rectian danime nobitissum quis maximint aut laborio es maximusape nis modia voluptum quat.

Sample of body text style 10/13 et dolor si dolut res quia qui sed modia doles aliquae volorestrum dis et doluptasperi doluptam fugiat voluptate alibea eariossi ommo es autem laut volorro rectian danime nobitissum quis maximint aut laborio es maximusape nis modia voluptum quat.

Sample of body text style 10/13 et dolor si dolut res quia qui sed modia doles aliquae volorestrum dis et doluptasperi doluptam fugiat voluptate alibea eariossi ommo es autem laut volorro rectian danime nobitissum quis maximint aut laborio es maximusape nis modia voluptum quat.

We're lorem ipsum dolor sit amet, consectetur adipiscing elit.

PROJECT NAME Fact Sheet



CONTACT US

For more information, questions, comments or requests to join the mailing list, please contact:

-  Name, Title
Metro
One Gateway Plaza, MS 99-xx-x
Los Angeles, CA 90012
-  213.922.xxxx
-  projectname@metro.net
-  metro.net/projectname

PLEASE RECYCLE THIS MATERIAL.
2-##-##-### @20## LACMTA



ONLY
BUS

Overview

Metro has a plan to make it easier to get around, which includes dozens of projects to create better transit in LA County. The [Bus Rapid Transit project] lorem ipsum dolor sit amet, consectetur adipiscing elit, sed do eiusmod tempor incididunt ut.

Sample of body text style 10/13 et dolor si dolut res quia qui sed modia doles aliquae volorestrum dis et doluptasperi doluptam fugiat voluptate alibea eariossi ommo es autem laut volorro rectian danime nobitissum quis maximint aut laborio es maximusape nis modia voluptum quat.

Sample of body text style 10/13 et dolor si dolut res quia qui sed modia doles aliquae volorestrum dis et doluptasperi doluptam fugiat voluptate alibea eariossi ommo es autem laut volorro rectian danime nobitissum quis maximint aut laborio es maximusape nis modia voluptum quat.

Lorem Ipsum Lorem

Sample of body text style 10/13 et dolor si dolut res quia qui sed modia doles aliquae volorestrum dis et doluptasperi doluptam fugiat voluptate alibea eariossi ommo es autem laut volorro rectian danime nobitissum quis maximint aut laborio es maximusape nis modia voluptum quat. You may need to edit text to keep thoughts succinct. Ut et laut volorro rectian danime modia voluptum quat.

Lorem Ipsum Lorem

Sample of body text style 10/13 et dolor si dolut res quia qui sed modia doles aliquae volorestrum dis et doluptasperi.

- > Our brand style is to use the greater-than-sign for listing primary points. There is a Paragraph style which makes it super easy to typeset.
- > Use the Paragraph style to ensure the bulleted text is flush left with the symbol hanging on the left.
 - Use bullet points for listing secondary points and indent text – use the Paragraph style so you don't have to worry about indenting or aligning text
 - Both primary and secondary bullets have a half space after (6.5 points) – whereas the Body text style has a full space after (13 points)
- > For the last Primary bullet point, you will want a full space after before you go back to regular Body text – it's easy and will set bullet points off nicely (see Paragraph styles)

Es autem fugias ant eum commodicti aperitatibus esseque sent, ut et laut volorro rectian danime nobitissum quis maximint aut laborio es nis modia voluptum quat.

Heading 2 if more than one line, use sentence case punctuation.

You may need to edit text to keep thoughts succinct. Ut et laut volorro rectian danime nobitissum quis maximint aut laborio es nis modia voluptum quat.

Schedule

PROJECT NAME

