



## I-710 SOUTH CORRIDOR PROJECT

### Equity Working Group Meeting #3 Summary

May 18, 2022



## ATTENDEES

### Task Force

#### Transportation Agencies

Lena Kent, Executive Director Public Affairs, Burlington Northern Santa Fe (BNSF) Railway  
Lupe Valdez, Senior Director Public Affairs, Union Pacific (UP) Railroad

#### Community-Based Organizations and Advocacy Groups

Ghirlandi Guidetti, Housing and Community Attorney, Legal Aid Foundation of Los Angeles

#### Environmental Organizations

Fernando Gaytan, Senior Attorney, Earthjustice  
Natalia Ospina, Project Attorney of Environmental Justice, National Resources Defense Council

#### Local Jurisdictions

Luke H. Klipp, Senior Transportation Deputy, Office of LA County Supervisor Janice Hahn, District 4

#### Ex Officio

Morgan Capilla, Environmental Justice Coordinator, U.S. Environmental Protection Agency Region 9

### Community Leadership Committee (CLC)

Emmanuel Godinez, Boyle Heights  
Fa'alagilagi (Lani) Meni-Siliga, Carson  
Phyllis Ollison, Compton  
Marcos Lopez, Long Beach  
Tiesha Davis, Wilmington/San Pedro

### LA Metro

KeAndra Cylear-Dodds, Executive Officer of Equity and Race  
Lilian De Loza-Gutierrez, Community Relations  
Jessica Medina, Manager, Equity and Race

### Project Team

Robert Cáliz, Cal Strategic Management  
Susan Ambrosini, Principal, AECOM  
Laura Adleman, Senior Outreach and Engagement Specialist, AECOM  
Aryeh Cohen, Planner, AECOM  
Julie Rush, Planning Senior Manager, Transportation, AECOM  
Kevin Borja, Planner, AECOM  
Susan DeSantis, Senior Project Manager, Arellano Associates  
Laura Herrera, Project Coordinator, Arellano Associates  
Nora Casillas, Senior Project Coordinator, Arellano Associates  
Nancy Verduzco, Tech Coordinator, Arellano Associates  
Jeffrey Newman, Caltrans

## Introduction

The Los Angeles County Metropolitan Transportation Authority (Metro) initiated the I-710 South Corridor Task Force (710 Task Force) to develop a community-supported, regionally significant, multimodal approach to addressing major mobility, safety, air quality, and equity needs for moving people and goods through the I-710 between the Ports of Los Angeles and Long Beach and State Route 60. The 710 Task Force will review and assess the purpose and need of investment in the I-710 corridor, develop multi-modal improvement strategies, identify programs and projects to advance these strategies, create an investment and implementation plan, and provide recommendations to the Metro Board in 2023.

Members of the 710 Task Force may also serve on working groups of the Task Force that meet as needed to research and analyze specific issues of interest to the project and to develop proposals for the Task Force to consider. The Equity Working Group (EWG) is focused on supporting the implementation of the Equity Planning and Evaluation Tool (EPET), and providing input on each step of the Task Force process to ensure an equitable process and outcomes.

The 710 Equity Working Group Meeting #3 was held virtually on Wednesday, May 18, 2022. The intent of this meeting was to: Review the Equity Planning and Evaluation Tool (EPET) purpose, key terms, and progress to date; discuss historical equity context of the I-710 South Corridor and surrounding communities; and discuss how a Procedural Equity approach can guide the project's ongoing outreach process. Simultaneous interpretation in Spanish was provided.

Prior to the meeting, the 710 Task Force received the agenda (**Appendix A**) and presentation (**Appendix C**). All detailed comments made throughout the meeting can be found in **Appendix B**.

## 710 Task Force Equity Working Group Virtual Meeting #3

### i. Meeting Logistics (Nora Casillas and Nancy Verduzco)

- > Nora Casillas opened the meeting with an overview of logistics, including live interpretation and Zoom participation.
- > Nancy Verduzco provided a brief tutorial on how to use the Miro board interactive tool.

### ii. Welcome, Project Team Introductions, Meeting Objectives, Agenda Review (KeAndra Cylear-Dodds)

- > KeAndra Cylear-Dodds opened the meeting and welcomed participants, introduced members of the Metro and Consultant Team, provided a recap of EWG Meeting #2, and reviewed the Objectives and Agenda for EWG Meeting #3.

## 1. Equity Planning and Evaluation Tool Overview (KeAndra Cylear-Dodds)

- > Ms. Cylear-Dodds reviewed the Equity Planning and Evaluation Tool (EPET) purpose and steps, including an overview of EPET progress to-date
- > Ms. Cylear-Dodds reviewed work to understand areas of opportunity that this project can impact and desired community results
- > Ms. Cylear-Dodds reviewed data analysis to understand project area demographics, environmental impacts, and transportation patterns
- > Ms. Cylear-Dodds reviewed initial community engagement to build a broad stakeholder coalition through the Task Force and CLC
- > Ms. Cylear-Dodds clarified that Metro is working to ensure that Equity Working Group concepts are integrated into general Task Force processes and other Metro Projects

## 2. Discussion of Historical Equity Context (Susan Ambrosini and Robert Cálix)

- > Susan Ambrosini provided an overview of early residential and industrial growth in the I-710 South Corridor study area.
- > Ms. Ambrosini reviewed the practice of “redlining” and how redlining and other policies influenced mid-20<sup>th</sup> century demographic and development patterns in the study area.
- > Ms. Ambrosini reviewed notable examples of freeway construction and displacement in the study area.
- > Robert Cálix reviewed notable examples of regional transportation inequity, community resistance, and progress made in addressing inequities.
- > Ms. Ambrosini shared maps of demographic change over time between 1960 and 2020, with a focus on population percentages by race and ethnicity.
- > Ms. Ambrosini led a discussion in which participants were asked to share their thoughts on the historical equity context presentation, including how they see lasting impacts reflected in the study area and surrounding communities, which major policies or events are missing from the discussion, and what lessons or implications are especially relevant to an equitable investment plan for the study area.
- > Working Group participants discussed the importance of incorporating lived experience in analysis of historical equity context.
- > Working Group participants discussed the need for context to effectively address inequities reflected in maps, specifically related to causes of displacement such as industry, rent burden, and predatory mortgage lending. Participants emphasized that the Task Force should be sensitive to how project proposals may increase rents or contribute to other forms of indirect displacement.
- > Working Group participants discussed that the investment plan should also pursue equitable outcomes for people who are no longer living in the corridor due to displacement and past policy or infrastructure decisions.

- > Working Group participants discussed the I-710's lasting impacts as a physical barrier between communities on either side of the freeway and the lack of pedestrian-friendly infrastructure, citing the Firestone Blvd. crossing as an example.

### 3. Procedural Equity Approach (Susan Ambrosini)

- > Ms. Ambrosini reviewed the definition and desired outcomes of Procedural Equity.
- > Ms. Ambrosini reviewed the project's outreach and engagement approach to-date, and the project team's intention to continue building an inclusive, effective, and meaningful outreach and engagement plan
- > Ms. Ambrosini shared demographic characteristics of participant engagement in the project to-date, highlighting areas for improvement in gaining project input from a representative sample of the study area population.
- > Ms. Ambrosini invited participants to discuss methods for meaningful engagement, and share feedback on potential engagement methods the project team is considering.
- > Working Group participants discussed the importance of bringing project information to existing events and community spaces and using outreach methods such as in-person canvassing or booths. Participants suggested distributing accessible project informational materials such as one-page handouts.
- > Working Group participants suggested engaging high school students, faith-based and cultural institutions, business organizations, labor unions, housing providers, bike clubs, car clubs, walking groups, bus riders, and asthma clinics.

### 4. Closing Comments, Next Steps, and Thank You (KeAndra Cylear-Dodds)

- > Ms. Cylear-Dodds thanked EWG members for their participation and feedback.
- > Mr. Calix emphasized that this is a unique opportunity to advocate for positive changes and shape the future of the corridor with attention to equity.

The meeting adjourned at 6:30 p.m.

#### Meeting Logistics

- **Meeting Format:** Webinar
- **Participants:** Task Force and CLC
- **Interactive Tools Used:** Miro board

**Appendices:**

- A. Equity Working Group #3 Agenda
- B. Detailed Comment Log and Miro Board Comments
- C. Equity Working Group #3 Presentation

## **Appendix A: Equity Working Group #3 Agenda**



## 710 Task Force

**Equity Working Group #3 Agenda / Agenda de la reunión # 3 del Grupo de Trabajo de Equidad**

**Date and Time / Fecha y hora:** Wednesday, May 18, 2022, 5:00-6:30 pm / *miércoles, 18 de mayo de 2022*

**Location / Lugar:** Held Virtually via Zoom / *Realizado Virtualmente por Zoom*

**Meeting Link / Enlace de reunión:** <https://tinyurl.com/EquityWG-3>

**Meeting ID / ID de reunión:** 861 2736 5022

**Passcode / Contraseña:** 5851

**Call-in:** 213.338.8477

### 710 Task Force Purpose and Timeline / *Propósito y cronograma del Grupo de Trabajo 710*

The 710 Task Force was initiated in September 2021 and will meet monthly to re-evaluate the goals and needs of the corridor, develop multi-modal strategies to meet these goals and needs, identify potential projects and programs in the short and long term based on those strategies, and create a prioritized Investment Plan. The Task Force is expected to present the Investment Plan to the Metro Board for consideration by the end of 2022.

*El Grupo de Trabajo 710 se inició en septiembre de 2021 y se reunirá mensualmente para reevaluar los objetivos y necesidades del corredor, desarrollar estrategias multimodales para cumplir con estos objetivos y necesidades, identificar proyectos y programas potenciales a corto y largo plazo basados en esas estrategias, y crear un Plan de inversiones priorizado. Se espera que el Grupo de Trabajo presente el Plan de Inversión a la Junta de Metro para su consideración por los fines de 2022.*

### Working Groups / *Grupos del Trabajo*

Members of the 710 Task Force may also serve on working groups of the Task Force that will meet as needed to research and analyze specific issues of interest to the project and to develop proposals for the Task Force to consider. The Equity Working Group (EWG) is focused on supporting the implementation of the Equity Planning and Evaluation Tool (EPET) and providing input on each step of the Task Force process to ensure equitable outcomes.

*Los miembros del Grupo de Trabajo 710 también pueden servir en grupos de trabajo que se reunirán según sea necesario para investigar y analizar temas específicos de interés para el proyecto y desarrollar propuestas para que el Grupo de trabajo las considere. El Grupo de Trabajo de Equidad (EWG) se centra en apoyar la implementación de la Herramienta de Planificación y Evaluación de Equidad (EPET) y proporcionar información sobre cada paso del proceso del Grupo de Trabajo para garantizar resultados equitativos.*

## Meeting Objectives and Agenda / *Objetivos y agenda de la reunión*

### Objectives

During this Equity Working Group #3 meeting, the working group will:

- Review the Equity Planning and Evaluation Tool (EPET) purpose, key terms, and progress to date
- Discuss the historical equity context of the I-710 south corridor and surrounding communities
- Discuss how a Procedural Equity approach can guide the project's ongoing outreach process

### Objetivos

*Durante esta reunión del Grupo de Trabajo de Equidad #3, el grupo hará lo siguiente:*

- *Revise el propósito de la Herramienta de Planificación y Evaluación de la Equidad (EPET), los términos clave y el progreso hasta la fecha*
- *Discutir el contexto histórico de equidad del corredor sur de la I-710 y las comunidades circundantes*
- *Discutir cómo un enfoque de equidad procesal puede guiar el proceso de divulgación en curso del proyecto*

## Agenda Overview (1.5 hours) / *Resumen da la agenda (1.5 horas)*

Time	Agenda Item
5:00-5:10 pm (10 min)	<b>1) Welcome, Agenda, and Meeting Objectives</b> <i>Bienvenida y revisión de la agenda y objetivos de la reunión</i>
5:10-5:25 pm (15 min)	<b>2) Agenda Item #1: Equity Planning and Evaluation Tool Overview and Progress to Date</b> <i>Punto #1 de la Agenda: la Herramienta de Planificación y Evaluación de la Equidad y progreso hasta la fecha</i>
5:25-5:55 pm (30 min)	<b>3) Agenda Item #2: Discussion of Historical Equity Context</b> <i>Punto #2 de la Agenda: Discusión del contexto histórico de equidad</i>
5:55-6:25 pm (30 min)	<b>4) Agenda Item #3: Procedural Equity Approach</b> <i>Punto #3 de la Agenda: Enfoque de equidad procesal</i>
6:25-6:30 pm (5 min)	<b>5) Closing Comments, Next Steps, and Thank You</b> <i>Comentarios finales, próximos pasos y agradecimiento</i>

## Pre-Work: Meeting Materials and Handouts / Trabajo previo: Materiales y folletos de la reunión

To prepare for this working meeting, attendees should read and review the following materials and, time permitting, independently research topics related to the meeting objectives and agenda (*above*):

- Presentation

*Para prepararse para esta reunión, los participantes deben leer y revisar los siguientes materiales y, si el tiempo lo permite, investigar de forma independiente temas relacionados con los objetivos y la agenda de la reunión (arriba):*

- Presentación (Traducción disponible próximamente)

## **Appendix B: Detailed Comment Log and Miro Board Comments**

## Appendix B: Detailed Comment Log and Miro Board Comments

Written Comments				
TIME	Name	Organization/ Community	Question/Comment	Presentation Section
5:44	Natalia Ospina	Natural Resources Defense Council	Building off Phyllis' question - does the grey area only appearing in 2020 means that the industry expanded in that region between 2000 and 2020?	Historical Equity Context
6:11	Marcos Lopez, CLC	Long Beach	Personally, booths at community events are a +	Procedural Equity Approach
6:12	Fa'alagilagi (Lani) Meni-Siliga, CLC	Carson	I agree	Procedural Equity Approach
6:14	Fa'alagilagi (Lani) Meni-Siliga, CLC	Carson	The city of Carson will be hosting quite a few upcoming community events.	Procedural Equity Approach
6:19	Phyllis Ollison, CLC	Compton	Faith-based organizations, community centers, and in-person canvassing are best for those challenged with technology.	Procedural Equity Approach
6:20	Marcos Lopez, CLC	Long Beach	It would be helpful to outreach to high school students or the youth.	Procedural Equity Approach
6:23	Lena Kent	Burlington Northern Santa Fe (BNSF) Railway	Chambers, business organizations	Procedural Equity Approach
6:23	Ghirlandi Guidetti	Legal Aid Foundation of LA- Long Beach (LAFLA-LB)	Clinics that specialize in asthma	Procedural Equity Approach
6:24	Phyllis Ollison, CLC	Compton	Other groups would be local bike clubs, car clubs, and walking groups.	Procedural Equity Approach
6:25	Natalia Ospina	Natural Resources Defense Council	Housing providers, like Century Villages at Cabrillo as example	Procedural Equity Approach
6:25	Marcos Lopez, CLC	Long Beach	Bus riders (surveying people on the bus?)	Procedural Equity Approach
6:25	Fa'alagilagi (Lani) Meni-Siliga, CLC	Carson	What about the unions?	Procedural Equity Approach

Verbal Comments				
TIME	Name	Organization/Community	Question/Comment	Presentation Section
5:19	Natalia Ospina	Natural Resources Defense Council	A good reminder of the EPET. In light of yesterday's ZET meeting, what does it mean for Metro to apply these EPET steps in tandem? Are these steps feeding into the ZET process as well?	EPET Overview
5:22	Natalia Ospina	Natural Resources Defense Council	Everyone should be thinking about equity - not just each working group. TF should consider it as a whole.	EPET Overview
5:38	Phyllis Ollison, CLC	Compton	Between 2000-2020, what happened to the San Pedro/Lomita/Rancho Palos Verdes area? The population density in the South Bay appears to have shifted/declined on the Hispanic/Latinx maps. Is there a known cause?	Historical Equity Context
6:29	Phyllis Ollison, CLC	Compton	Is there something that we can give to our CBOs or block clubs to explain the Task Force? A brief description, like on a 3x5 card?	Procedural Equity Approach
6:35	Phyllis Ollison, CLC	Compton	Thank you for the historical presentation. It explains a lot. I was aware of some of it but not all, so good job with that.	Closing Comments

***How do you see the lasting impacts of this history reflected in the I-710 South Corridor and surrounding communities today?***

Look at folks who are no longer in the corridor

Should we also be thinking about what we can do for people who are no longer there?

***Are there any major policies or events that you would add to this discussion of historical context? Is there anything that feels inaccurate or misrepresented?***

Was there displacement caused by industry? undercount/lack of data due to COVID? Need to understand context behind maps to effectively address inequities

Even pre-pandemic, saw huge spike in rent burden, displacement due to predatory lending and mortgage crisis. Homeownership to renters.

the growth of industry and its relationship with the 710. The relationship between those two

***What lessons or implications feel especially relevant to shaping an equitable investment plan for the I-710 South Corridor?***

should be sensitive to any plans that further displace families or increase rents

Think about how the 710 divides communities (ex. South Gate)

Ignoring pedestrians and creating divisions among industrial vs residential

***In your experience, which of these engagement or outreach methods have been most or least effective for developing a list of community-driven strategies and projects? Ideas for other methods?***

Personally, booths at community events are a +

Agree that booths at community events are good

City of Carson will be hosting quite a few upcoming community events

***Are there other specific groups or geographic areas that you are concerned have not been reached or engaged meaningfully? How can we expand our reach to these specific groups and geographic areas?***

It would be helpful to outreach to High School students or the youth

helpful to reach out to clinics that specialize in asthma

Chambers, business organizations

helpful to reach out to local bike clubs, car clubs, walking groups

Clinics that specialize in asthma

other groups would be local bike-clubs, car clubs, walking groups

Housing providers, like Century Villages as an example

Bus riders (surveying people on the bus?)

What about the unions?

Faith based organizations, community centers and in-person canvassing are best for those challenged with technology.

## **Appendix C: Equity Working Group #3 Presentation**

# Welcome!

*We will begin in a few moments.*

**Equity Working Group Meeting #3**

May 18, 2022



We're developing a new vision for the 710 corridor.

710 TASK FORCE

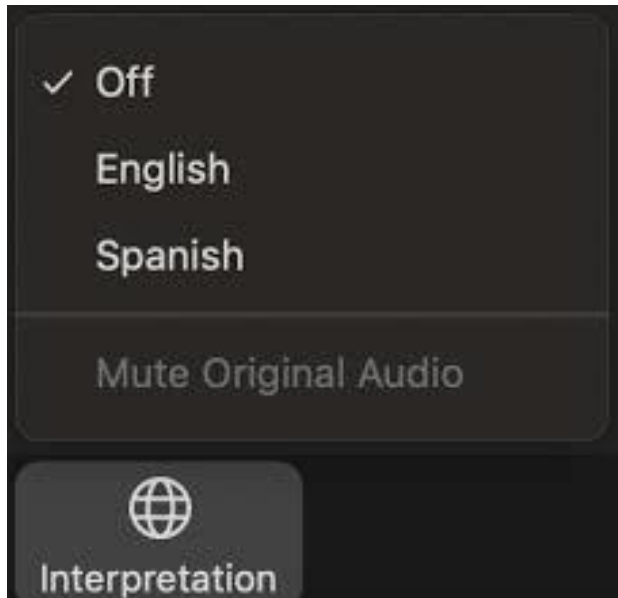


Metro

# Interpretation/ *Interpretación*



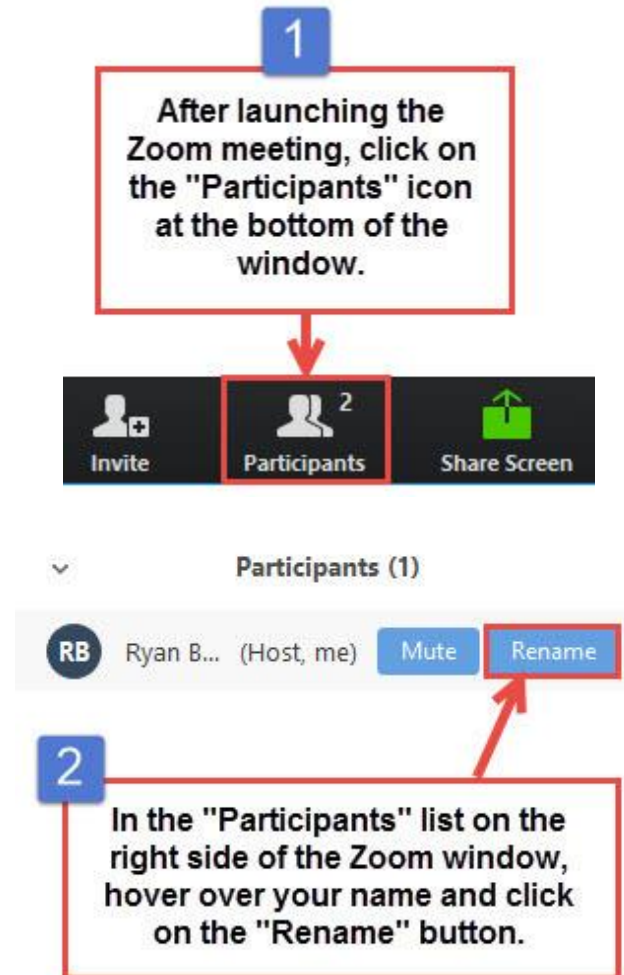
- > Click the **Interpretation** icon in your meeting controls to enter an *English or Spanish* room
- > (Optional) To hear the interpreted language only, click **Mute Original Audio**



- > Haga clic en el ícono de **Interpretación** en los controles de su reunión para ingresar a una sala en inglés o español
- > (Opcional) Para escuchar solo el idioma interpretado, haga clic en “**Mute Original Audio**” o “**Silenciar audio original**”

# Task Force/CLC Member Identification

***Task Force and CLC Members, please change your Zoom screen name to include:***  
Name, and whether you are a Task Force or CLC Member



# Raise Hand / *Levantarse la mano*

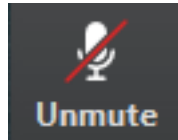


- > Click **Raise Hand** in your meeting controls or
- > **Press\*9** on the phone line.
- > To lower your hand, click **Raise Hand** in your meeting controls.
- > Comments & questions can also be provided in writing by using the **Chat** function.
- > The **Chat** button is located on the control panel at the bottom of your screen.
- > **You can also physically raise your hand while your video is on and the speaker will call on you**

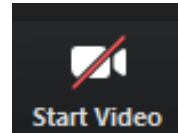
- > *Haga clic en “**Raise Hand**” o “**Levantarse la mano**” en los controles de la reunión o*
- > ***Presiona \*9** en la línea telefónica.*
- > *Para bajar la mano, haga clic en “**Raise Hand**” o “**Levantarse la mano**” en los controles de la reunión.*
- > *Los comentarios y las preguntas también se pueden proporcionar por escrito mediante la función de **Chat**.*
- > *El botón **Chat** se encuentra en el panel de control en la parte inferior de la pantalla.*
- > ***También puede levantar físicamente la mano mientras su video está encendido y el orador/la oradora lo llamará***

# Zoom Tips / Consejos de Zoom

- > To **mute** and **unmute**, click the microphone icon on the bottom left of your control panel



- > To **start** and **stop** your video, click the camera icon at the bottom left of your control panel



- > To switch between views during the meeting click or tap on **Standard**, **Side-by-side Speaker View**, and **Side-by-side Gallery View** at the top right corner of your zoom screen

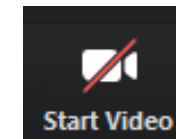
## ***Tech Support - Google phone line/text***

- > Phone: 323.609.3345
- > monitoring, translation support

- > Para **silenciar** y **cancelar el silencio**, haga clic en el ícono del micrófono en la parte inferior izquierda de su panel de control



- > Para **iniciar** y **detener** su video, haga clic en el ícono de la cámara en la parte inferior izquierda de su panel de control.



- > Para cambiar entre vistas durante la reunión, haga clic o toque **Estándar**, **Vista de orador en paralelo** y **Vista de Galería en Paralelo** en la esquina superior derecha de la pantalla de zoom.

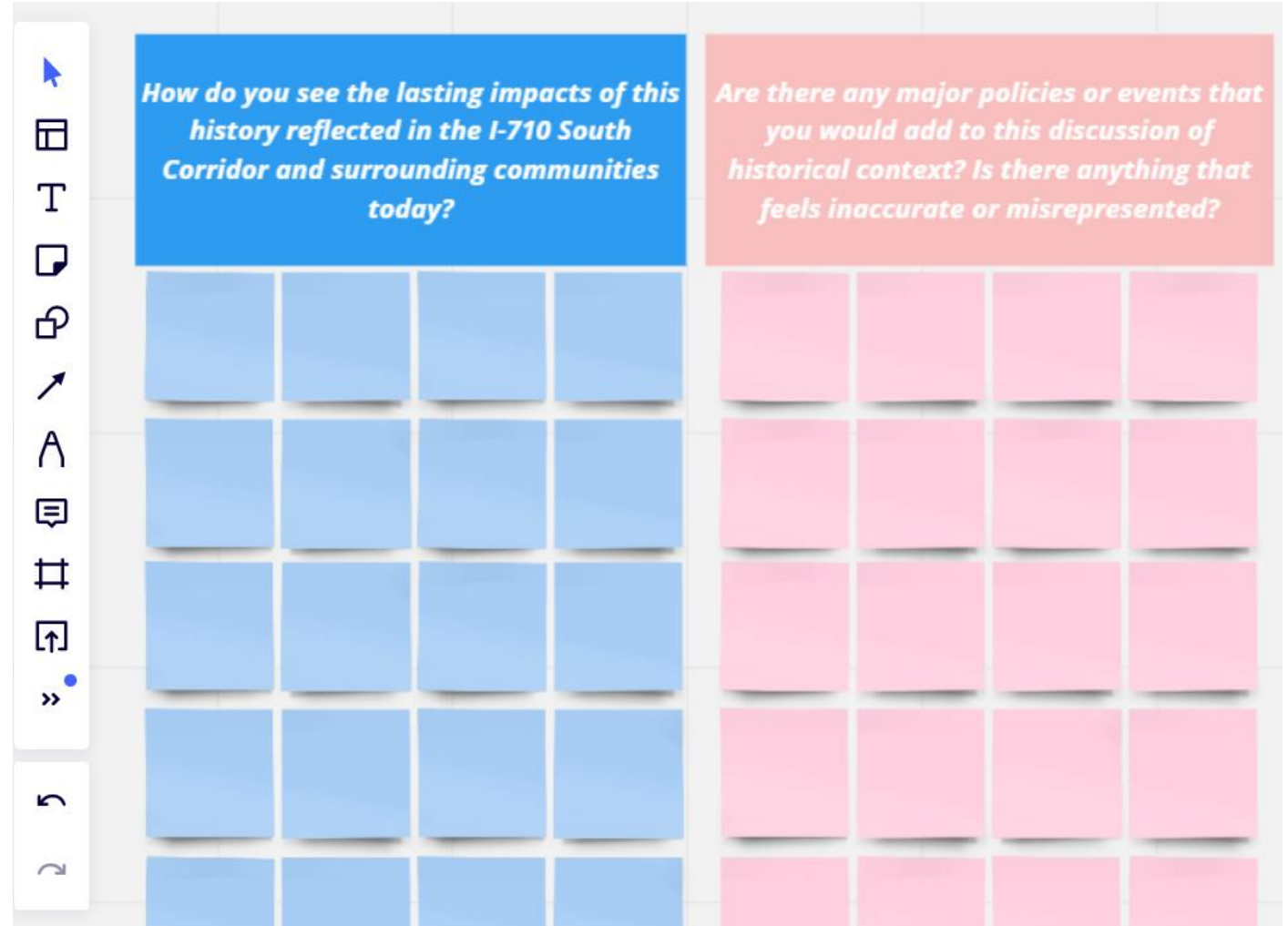
## ***Soporte técnico: línea telefónica/texto de Google***

- > Teléfono: 323.609.3345
- > seguimiento, soporte de traducción

# Miro Board

## Tips for using Miro Board:

- > Press space bar and click mouse to maneuver around the board
- > Zoom accessibility is located on the bottom left corner of the board
- > Double click a colored sticky note to populate a comment
- > Refrain from erasing or editing other entries
- > If a phone is being used, the app will need to be downloaded



# Welcome!

# Metro and Consultant Team



**KeAndra Cylear Dodds**

LA Metro, Equity and Race



**Jessica Medina**

LA Metro, Equity and Race



**Ernesto Chaves**

LA Metro, Highway Programs



**Lilian De Loza-Gutierrez**

LA Metro, Community Relations



**Susan Ambrosini**

AECOM, Equity Team



**Robert Cálix**

Cal Strategic Management

# Meeting Objectives

## During this meeting, the working group will:

- > Review the Equity Planning and Evaluation Tool (EPET) purpose, key terms, and progress to date
- > Discuss historical equity context of the I-710 south corridor and surrounding communities
- > Discuss how a Procedural Equity approach can guide the project's ongoing outreach process

# Equity Working Group Meeting #2 Recap

## Summary

- > Held virtually via Zoom on Tuesday, April 19th
- > 14 participants (7 Task Force Members, 5 CLC Members, 1 Ex-Officio, 1 GCCOG)
- > Meeting topics included:
  - Continued detailed discussion of Equity Definition
  - Discussed Vision, Goals & Objectives Approach and proposal to introduce Equity Guiding Principle
  - Reviewed and discussed Preliminary Vision Statement and Goals
  - Engaged in consensus building and made formal recommendations to Task Force

## Highlights

- ✓ EWG agreed to recommend that Equity be included as a Guiding Principle rather than a Goal
- ✓ Discussion around the Equity Guiding Principle focused on the need for a clear and ambitious statement of values that also reflects realistic expectations for the scope and outcomes of the I-710 South Corridor plan
- ✓ EWG reached consensus to recommend Equity Guiding Principle and refined Vision Statement to Task Force

# Agenda

- 5:00pm Welcome, Agenda, and Meeting Objectives (10 min)**
- 5:10pm Agenda Item #1: Equity Planning and Evaluation Tool Overview and Progress to Date (15 min)**
- 5:25pm Agenda Item #2: Discussion of Historical Equity Context (30 min)**
- 5:55pm Agenda Item #3: Discussion of Procedural Equity Approach (30 min)**
- 6:25pm Closing Comments, Next Steps, and Thank You (5 min)**

# Detailed Agenda

- > **5:00pm Welcome, Agenda, and Meeting Objectives (10 min)**
  - Details
- > **5:10pm Agenda Item #1: Equity Planning and Evaluation Tool Overview and Progress to Date (15 min)**
  - Review of the EPET's purpose and the Task Force/EWG's progress to date on stages 1-4 of the EPET
- > **5:25pm Agenda Item #2: Discussion of Historical Equity Context (30 min)**
  - Overview and discussion of significant planning, policy, and infrastructure decisions impacting the I-710 corridor and surrounding communities, regional transportation inequities, and patterns of population growth and change
- > **5:55pm Agenda Item #3: Discussion of Procedural Equity Approach (30 min)**
  - Overview and discussion of outreach and engagement for next phases of project
- > **6:25pm Closing Comments, Next Steps, and Thank You (5 min)**

**Agenda Item #1:**  
**Equity Planning and Evaluation Tool (EPET)**  
**Overview and Progress to Date**

# Equity Planning and Evaluation Tool (EPET)

The EPET's purpose is to assist the I-710 Coalition:



**Identify disparities** that impact mobility, economic opportunities, and health outcomes, and how related services, programs, and projects are experienced

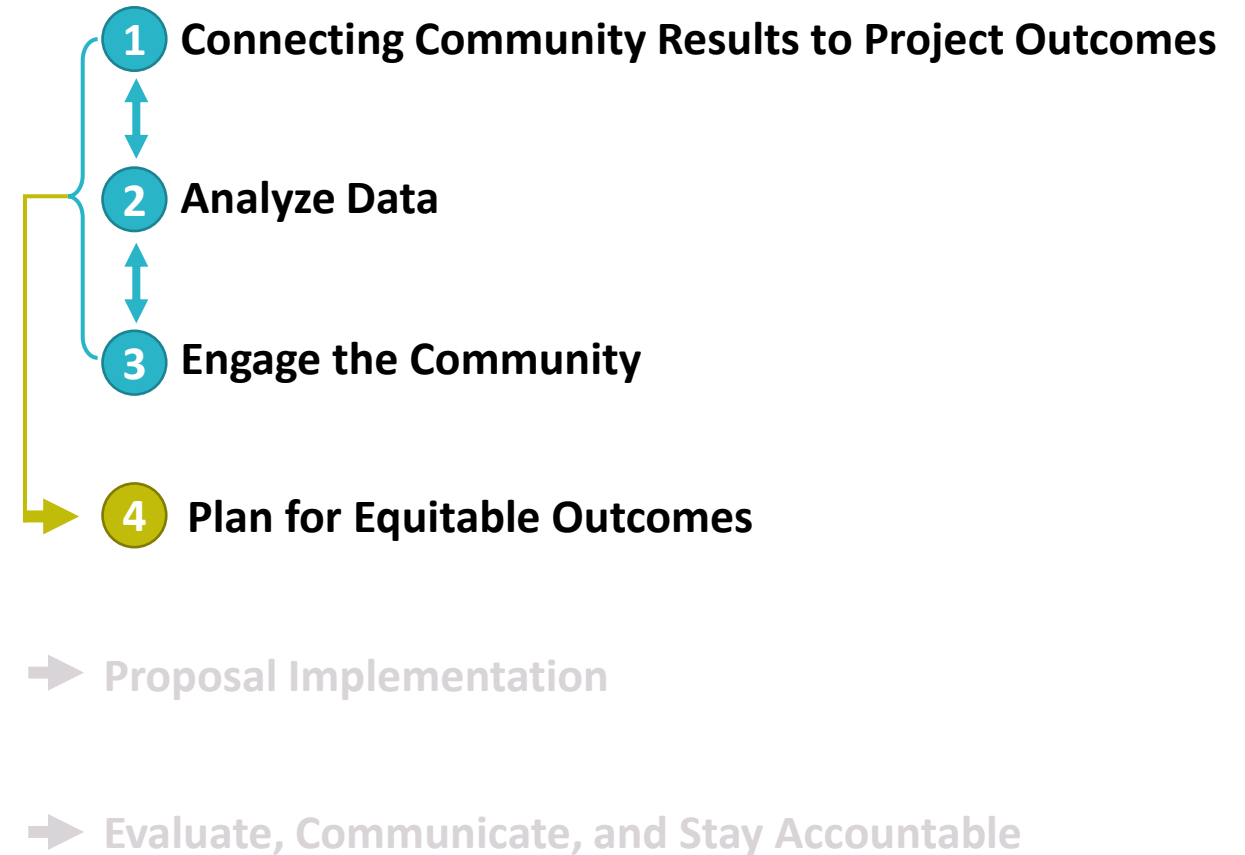


**Understand the root causes** of those disparities



**Develop and implement strategies, projects, programs, and investment priorities** in a manner that provides more equitable outcomes.

## EPET Steps



# Equity Planning and Evaluation Tool (EPET)

1

## Connecting Community Results to Project Outcomes

- > Which areas of opportunity/concern can the project impact?
- > What are the desired community results?



## Progress to Date

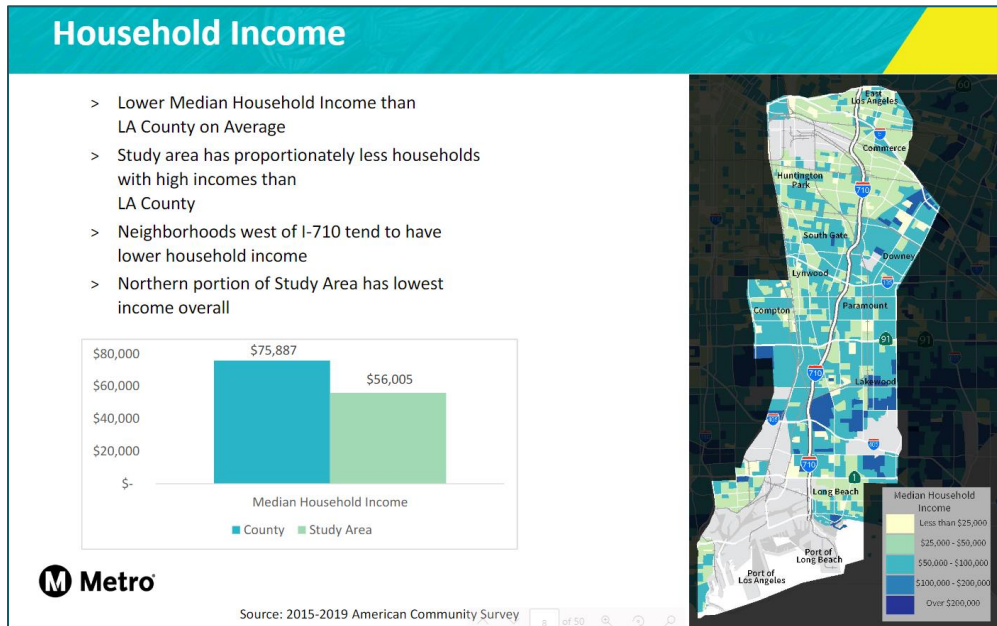
- > Established a shared Vision statement for the overall future of the I-710 corridor
- > Identified distinct goals for various areas of concern that the project can impact
- > Recommended an Equity Guiding Principle to inform all aspects of the project

# Equity Planning and Evaluation Tool (EPET)

2

## Analyze Data

- > What are the demographics and characteristics of the project's impacted area(s)?
- > What does the data tell us about existing disparities in those areas?



## Progress to Date

- > Reviewed existing study area demographics and socioeconomic outcomes to identify disparities in areas such as income, employment, education
- > Reviewed data on environmental impacts and public health outcomes, including pollution burden, asthma rates
- > Reviewed transportation patterns such as how individuals commute, where congestion and collisions occur

# Equity Planning and Evaluation Tool (EPET)

3

## Engage the Community

- > How have impacted communities been engaged previously and in this project?
- > What historic investments, decisions, events or developments contributed to current community conditions?

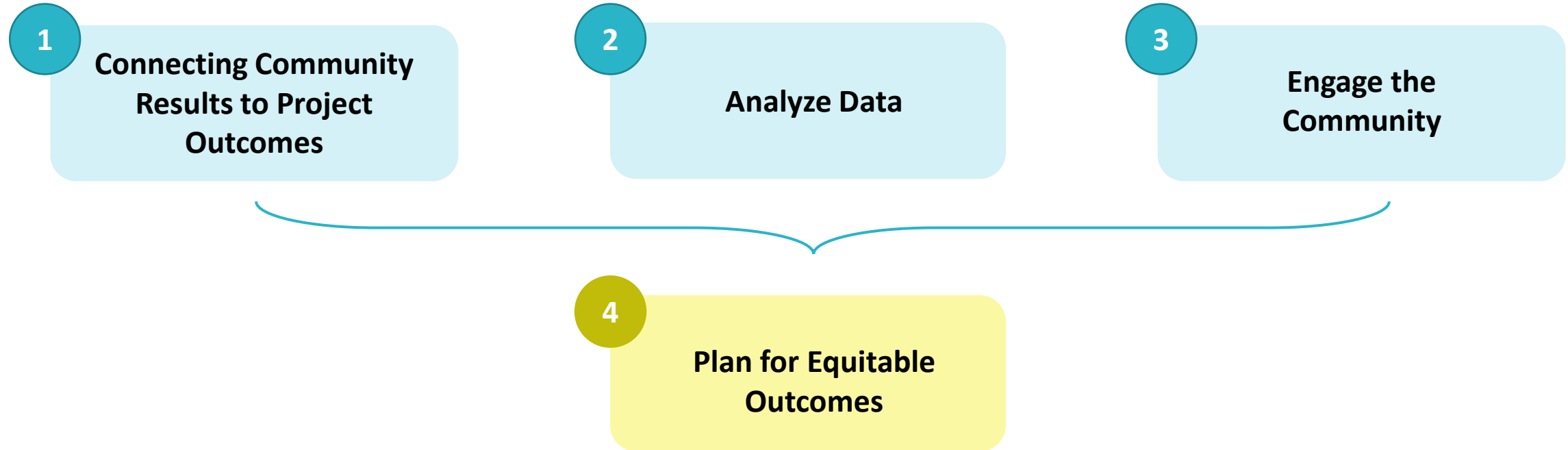
### Progress to Date

- > Established Task Force with a broad coalition of community leaders and advocates, industry and elected representatives
- > Established CLC to bring an expanded range of community perspectives, lived experience and expertise, and leadership skills into the process

### Tonight's Agenda:

- > **Discuss Historical Equity Context**
- > **Discuss Procedural Equity Approach for future stages of the I-710 South Corridor Project**

# Equity Planning and Evaluation Tool (EPET)



- > How have proposed actions been designed to ensure equitable outcomes?
- > How has engagement with impacted communities informed the proposals?
- > How will project impacts be measured and tracked?

**Agenda Item #2:  
Discussion of Historical Equity Context**

# Early Residential and Industrial Growth

## Zoning of “Central Manufacturing District” along LA River (early 1900s)

- > Jobs and housing generally restricted to white workers
- > Preceded by forced displacement of Indigenous Tongva peoples and Mexican villages
- > Areas now within cities of Commerce, Bell, Vernon

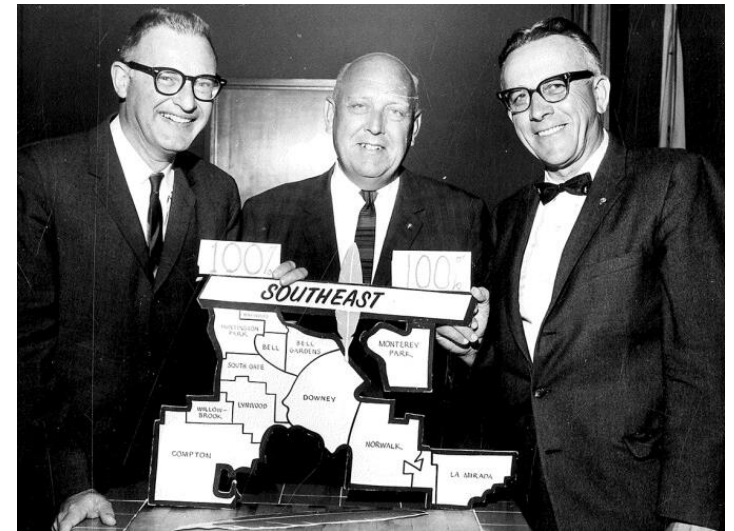
## Working class suburban neighborhoods developed throughout Southeast LA between 1900-1960s

- > Cheap land promoted to low- and middle-income white families
- > Non-white and immigrant populations restricted from buying property
- > “Redlining” in 1935-1940 furthers segregation and racial gaps in wealth, public investment, property ownership

Source: <https://www.kcet.org/the-right-to-live-southeast-los-angeles-life-in-three-moments>



Bomber Aircraft Factory in Downey, 1943



White businessmen promoted “Anglo-only Enclaves” throughout Southeast LA  
(Source: City of Bell Gardens photo archive; KCET)

# “Redlining”

“Redlining” is a common term for the federal government’s assessment of mortgage risk for financial lenders as part of a New Deal-era program

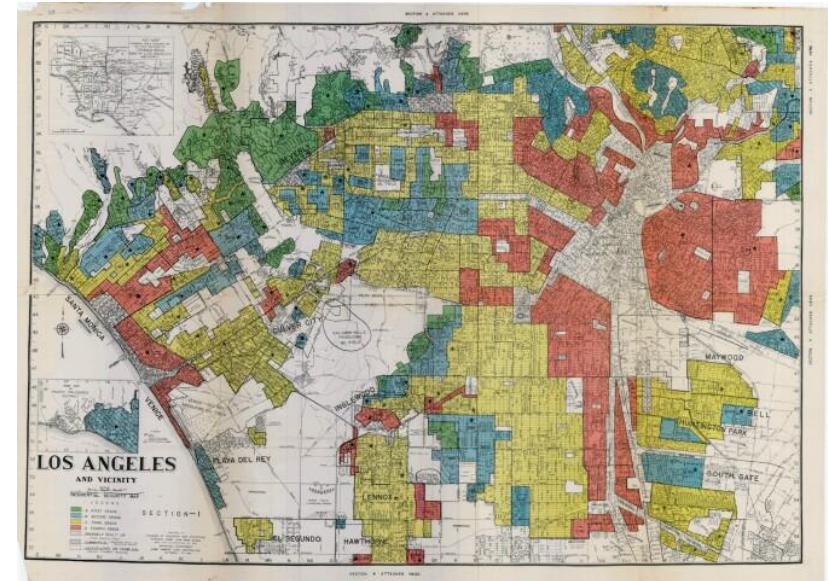
- > Ratings were mapped by the Homeowners’ Loan Corporation Between 1935-1940
- > Assessments were based in racist and anti-immigrant ideology
- > Assessments also considered multi-family housing, industrial areas, heavy infrastructure, highways, and environmental hazards as 'higher-risk'
- > Prevented Black, Hispanic/Latinx, Asian-American, and various recent immigrant communities from accessing federally-backed loans to buy or maintain property, leading to cycles of disinvestment
- > Incentivized white homeowners to exclude minority populations from moving into their neighborhoods

Sources:

[Hillier, Amy E., "Redlining and the Homeowners' Loan Corporation" \(2003\). Departmental Papers \(City and Regional Planning\).](#)  
[Robert K. Nelson, LaDale Winling, Richard Marciano, Nathan Connolly, et al., "Mapping Inequality," American Panorama, ed. Segregation in the City of Angels: A 1939 Map of Housing Inequality in L.A. | KCET](#)

## “Redlining” Ratings

A	"Best"
B	"Still Desirable"
C	"Definitely Declining"
D	"Hazardous"



1939 HOLC "redlining" map of central Los Angeles  
(Source: LaDale Winling and [urbanoasis.org](http://urbanoasis.org).)

# I-710 Area Redlining Map

Redlining in the I-710 study area reflects several patterns of 20th century development:

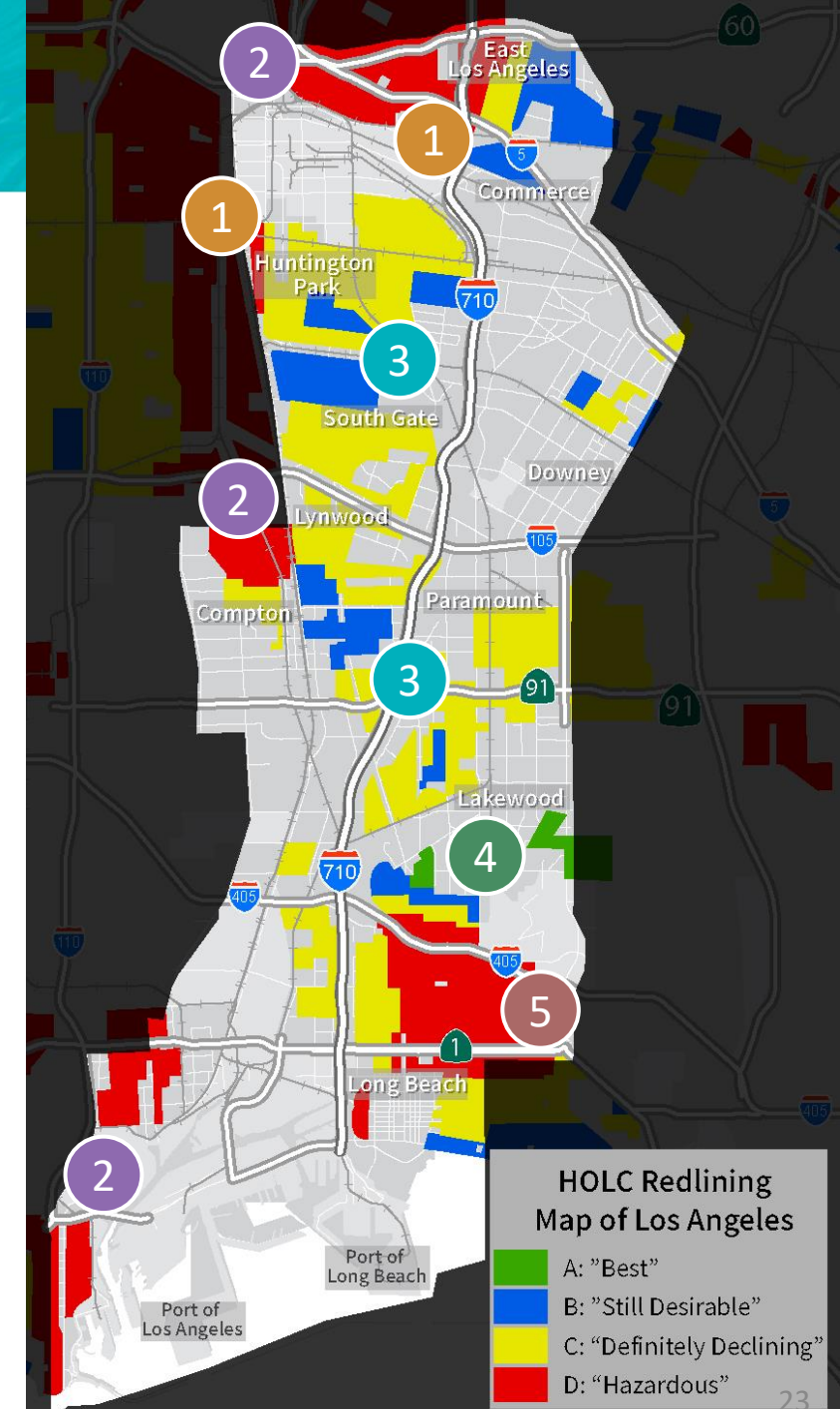
- 1 Industrialization:** "Central Manufacturing District" in Commerce, Bell, and Vernon, growth of factory worker neighborhoods throughout Southeast LA.
- 2 Multi-ethnic Communities:** Non-white and immigrant populations indicated by Grade D (Red) in East Los Angeles, Compton, Wilmington, San Pedro, Long Beach
- 3 White Working-class Suburbanization:** Racially exclusive suburbs - Grade B (Blue) indicates white-collar, higher-income districts, Grade C (Yellow) indicates factory workers, lower-income districts. Almost entirely white residents at time of assessment.
- 4 Wealth Concentration:** Establishment of highly-exclusive areas in Bixby Knolls and Lakewood, Grade A (Green) indicates white business executives, military officers
- 5 Environmental Hazards:** Signal Hill oil field indicated by Grade D (Red)

Note: Redlining occurred prior to the construction of any major freeways (freeways labeled for visual reference)



Sources:

Hillier, Amy E., "Redlining and the Homeowners' Loan Corporation" (2003). *Departmental Papers (City and Regional Planning)*.  
Robert K. Nelson, LaDale Winling, Richard Marciano, Nathan Connolly, et al., "Mapping Inequality," *American Panorama*, ed.  
[Segregation in the City of Angels: A 1939 Map of Housing Inequality in L.A. | KCET](#)



# Policy and Population Shifts

## Changing Industry

- > Decline in industrial land uses and union jobs after World War II

## Civil Rights Movement, Desegregation, “White Flight”

- > 1965 Watts Uprising in response to racial injustices
- > Fair Housing Act prohibits housing discrimination (on paper), provides more residential options for Black, Hispanic/Latinx, Asian-American, and other immigrant populations.
- > White and middle-class migration from working class areas to more affluent suburbs in response to desegregation

## Immigration

- > Many new immigrants, primarily from Mexico and Central America, come to working-class suburban areas in Southeast LA



1965 Watts Uprising (source: LA Sentinel)

# Freeway Construction and Displacement

- > **“Port Freeway” (now I-710)** built by City of Long Beach between 1953-1964, initially planned to serve as export route for manufacturing district
- > **Federal-Aid Highway Act of 1956** promotes and funds construction of interstate freeways, connecting affluent suburbs to urban job centers while cutting through disinvested non-white neighborhoods
- > **Construction of freeways displaces tens of thousands of residents**, disrupts business districts, and diminishes property values
- > **Demographic changes** between 1960 and 1980 clearly reflect division between areas east and west of the I-710 Freeway and LA River



Central Manufacturing District with I-710 under construction in foreground, 1956  
(source: Kelly-Holiday Collection of Negatives and Photographs, Los Angeles Public Library)

# Regional Transportation Inequity, Resistance, and Progress

## Goods Movement and Commuting Inequities

- > I-710 Corridor communities bear concentrated pollution burden of imported goods traveling from POLB and POLA to regional and national destinations
- > In LA County, commuters from majority-white areas disproportionately travel through majority non-white areas to drive to work, and areas whose residents drive less experience more air pollution on average

[Source: Pacific Southwest Region University Transportation Center, USC](#)



## Freeway Resistance and Outcomes

- > Whiter, wealthier communities successfully prevented freeways in Beverly Hills, Reseda, Malibu, Laurel Canyon in 1970s, and 710/210 gap through South Pasadena in 2017
- > Similar resistance efforts in Black and Latino communities (including I-710 corridor) have been largely unsuccessful

## I-105 (“Century Freeway”)

- > Originally designed in 1972, eventually completed 1993
- > Displaced 21,000 people and bisected predominantly Black neighborhoods, created urban blight
- > Delayed by decade-long lawsuit from residents, civil rights/environmental orgs, City of Hawthorne
- > Eventually allowed to proceed with requirement to relocate or build housing, include local hire program, reduce lanes, and incorporate a transitway (now Metro C Line (Green))

# Regional Transportation Inequity, Resistance, and Progress

## **Metro A Line (Blue)**

- > 1990 - Metro's first rail line, connecting Long Beach and Downtown Los Angeles through Rancho Dominguez, Compton, Willowbrook, Watts, and South Central/South LA

## **1992 Los Angeles Uprising/Riots**

- > Civil unrest and violence sparked by acquittal of police officers in the beating of Rodney King
- > Particularly concentrated in underinvested neighborhoods throughout South Central/South LA, with long history of racist and abusive policing



## **1996 Bus Riders Union/Metro Consent Decree**

- > Labor/Community Strategy Center and Bus Riders Union file class-action civil rights lawsuit against Metro on grounds of discriminatory over-investment in rail transit at the expense of bus service and riders
- > Consent Decree settlement includes fare reductions, load factors (fewer standees), and major investments in new buses to address overcrowding and bus conditions

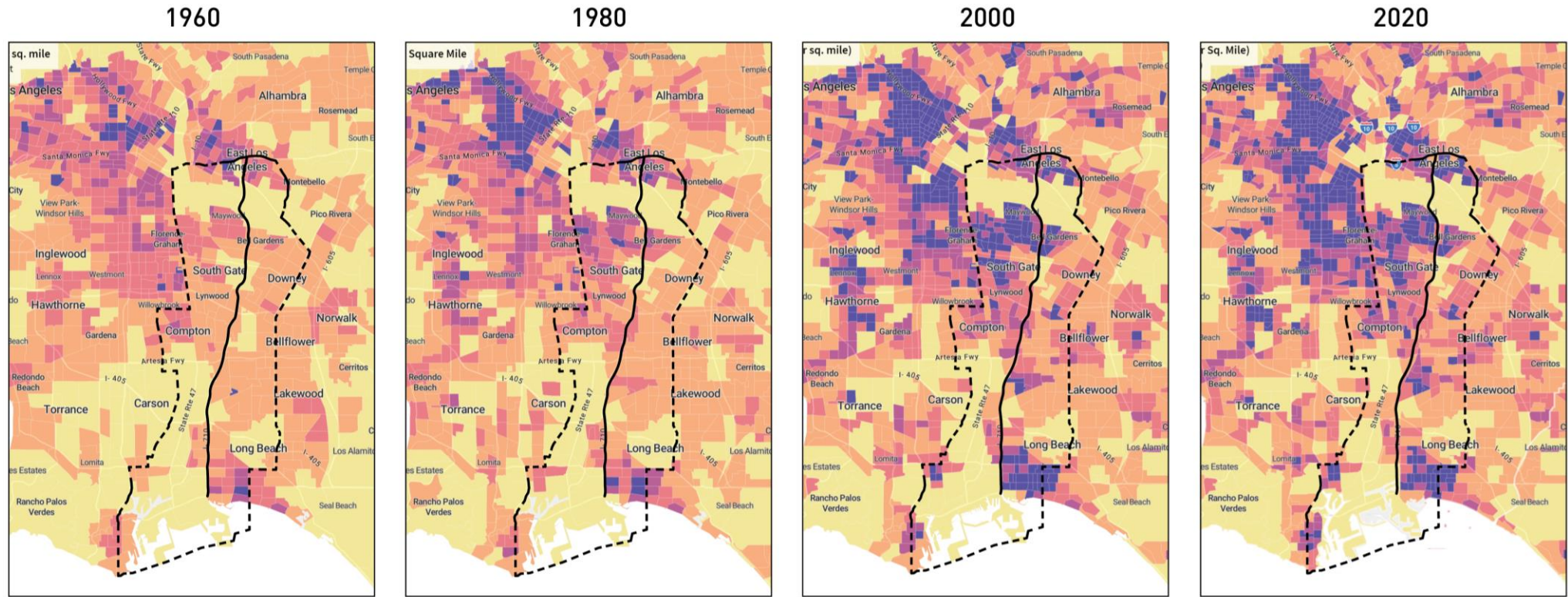
## **Measure M**

- > 2016 - Half-cent LA County sales tax measure funds projects to ease traffic, repair local streets and sidewalks, expand public transportation, earthquake retrofit bridges and subsidize transit fares for students, seniors and persons with disabilities

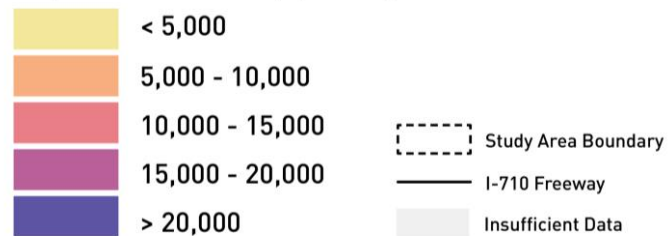
## **Metro NextGen Bus Plan**

- > 2020 - Developed to increase bus service, frequency, reliability, and improve first-last mile connections and bus stop environments

# Population Density Over Time

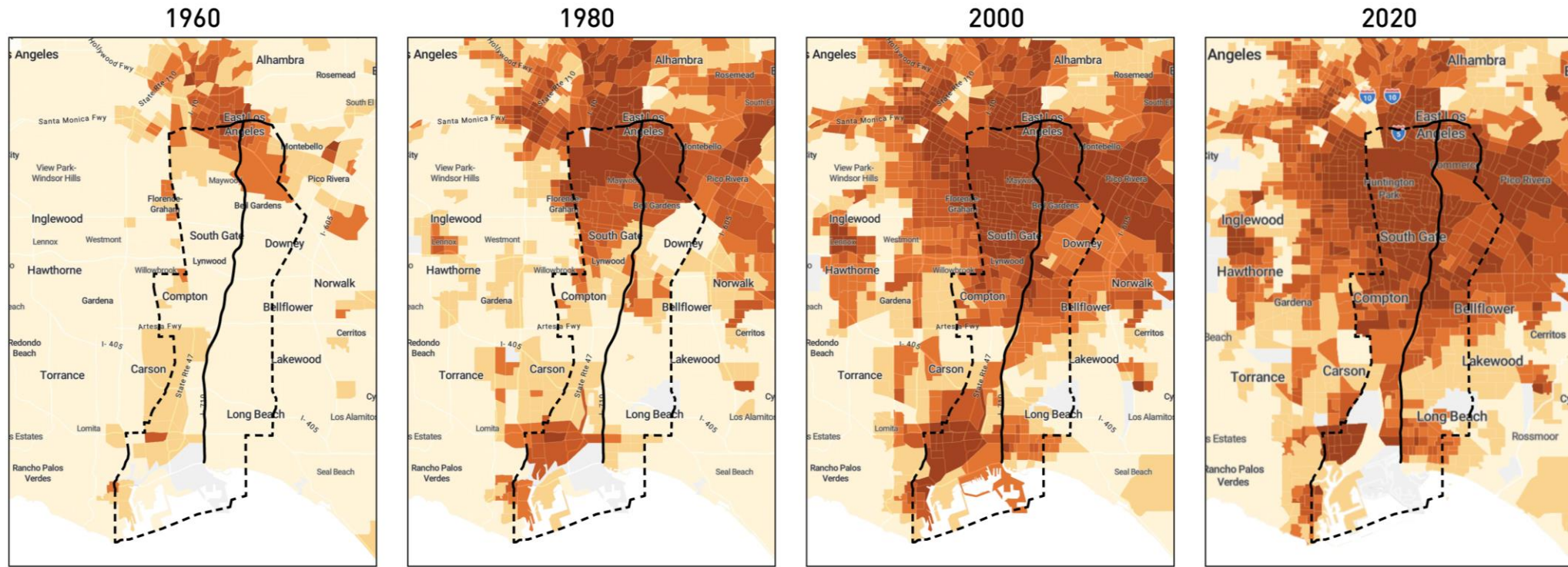


Population Density per Square Mile



Source: Social Explorer (U.S. Census Data)

# Hispanic/Latinx Population over Time



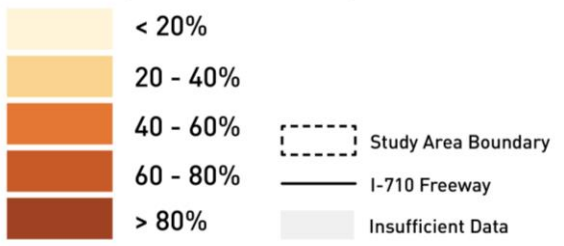
"Puerto Rican or Spanish Surname"

"Persons of Spanish Origin"

"Hispanic or Latino"

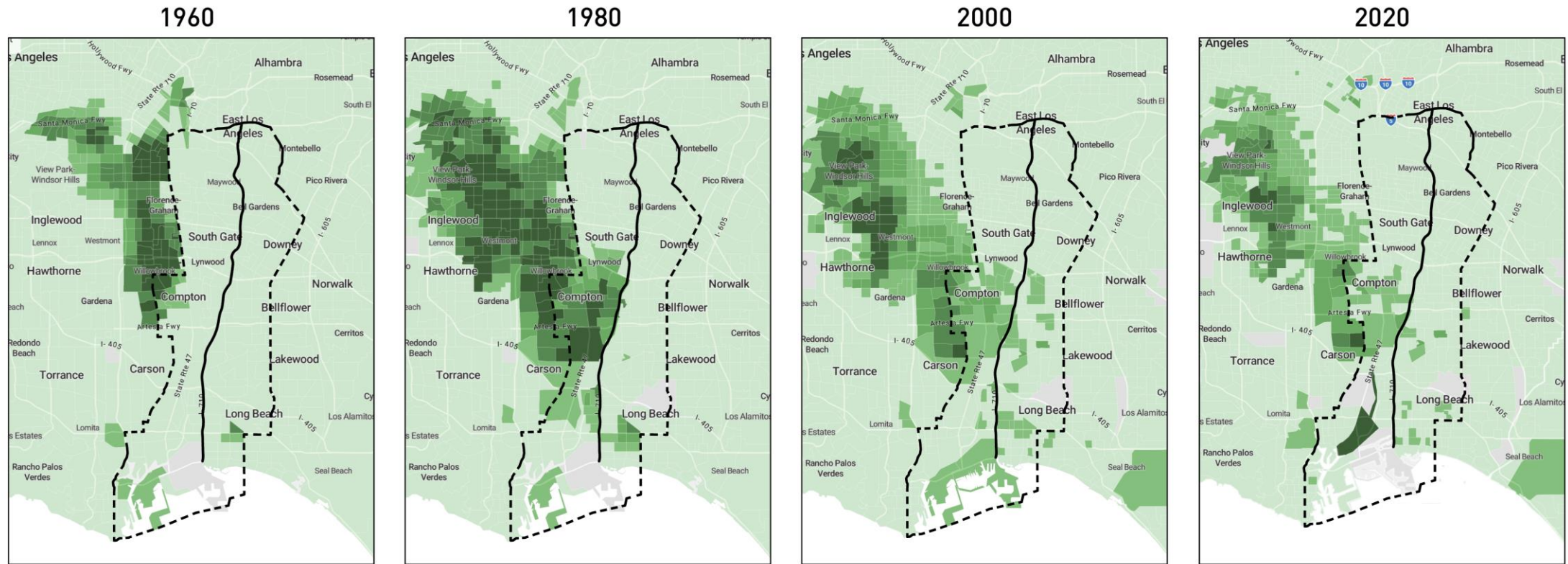
"Hispanic or Latino"

## Total Population %: Hispanic or Latinx



Source: Social Explorer (U.S. Census Data)

# Black/African-American Population over Time

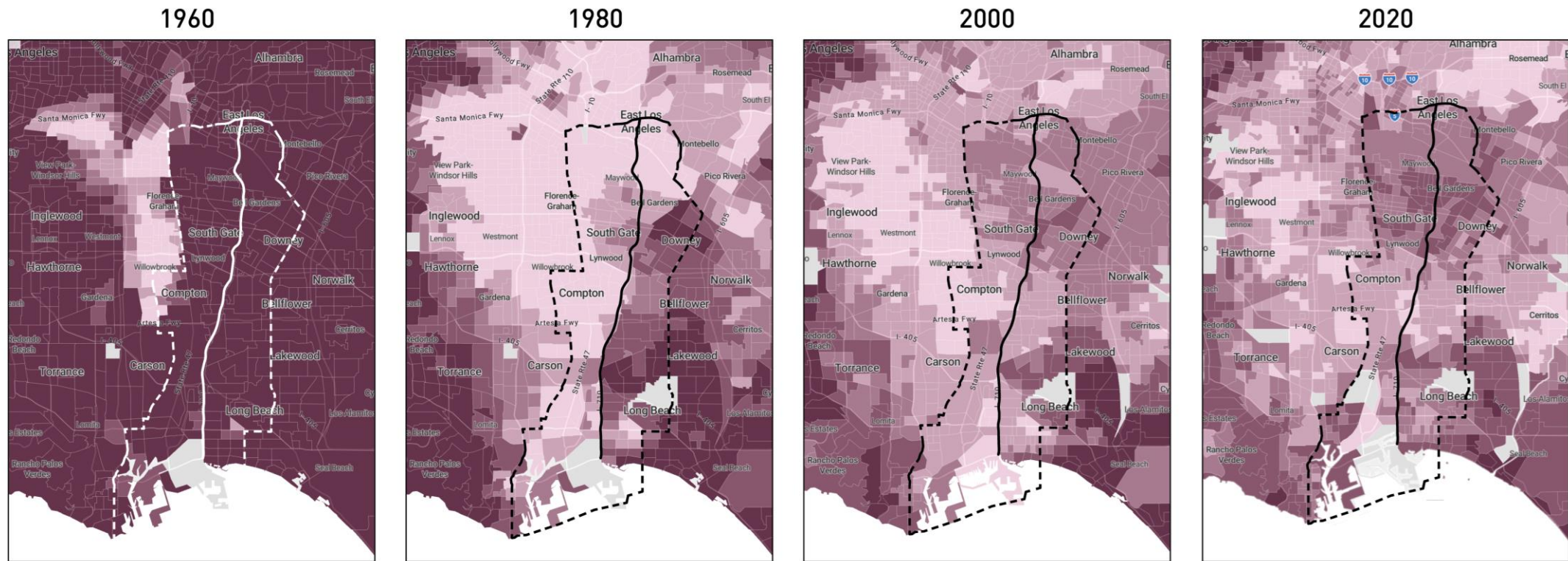


Total Population %: Black or African American

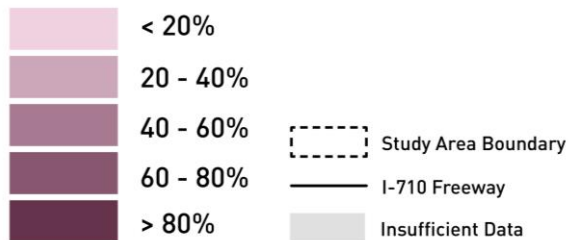


Source: Social Explorer (U.S. Census Data)

# White Population over Time



Total Population %: White



Source: Social Explorer (U.S. Census Data)

# Historical Equity Context - Discussion

## Discussion Questions

- > How do you see the lasting impacts of this history reflected in the I-710 South Corridor and surrounding communities today?
- > Are there any major policies or events that you would add to this discussion of historical context? Is there anything that feels inaccurate or misrepresented?
- > What lessons or implications feel especially relevant to shaping an equitable investment plan for the I-710 South Corridor?

**Agenda Item #3:  
Discussion of Procedural Equity Approach**

# Desired Outcomes of Procedural Equity

## Procedural Equity

- > Proactive and accessible community engagement that bridges linguistic, technology, and ability gaps to meet communities where they are and enable participatory and representative decision-making processes.
- > Ongoing systems of accountability and communication to build and maintain trust

# Desired Outcomes of Procedural Equity

## Procedural Equity

- > Proactive and accessible community engagement that bridges linguistic, technology, and ability gaps to meet communities where they are and enable participatory and representative decision-making processes.
- > Ongoing systems of accountability and communication to build and maintain trust

- > Earned trust between Metro, community members, and community partners
- > A collection of project ideas and feedback from a range of people that accurately reflect the project area's population
- > Community-identified metrics and benchmarks for project evaluation
- > Project outcomes that reflect the priorities and needs of communities most impacted by the I-710 and other past planning and policy harms
- > Meaningful experiences that inspire participants to maintain involvement across remaining project phases and implementation of the Investment Plan, as well as other future planning processes

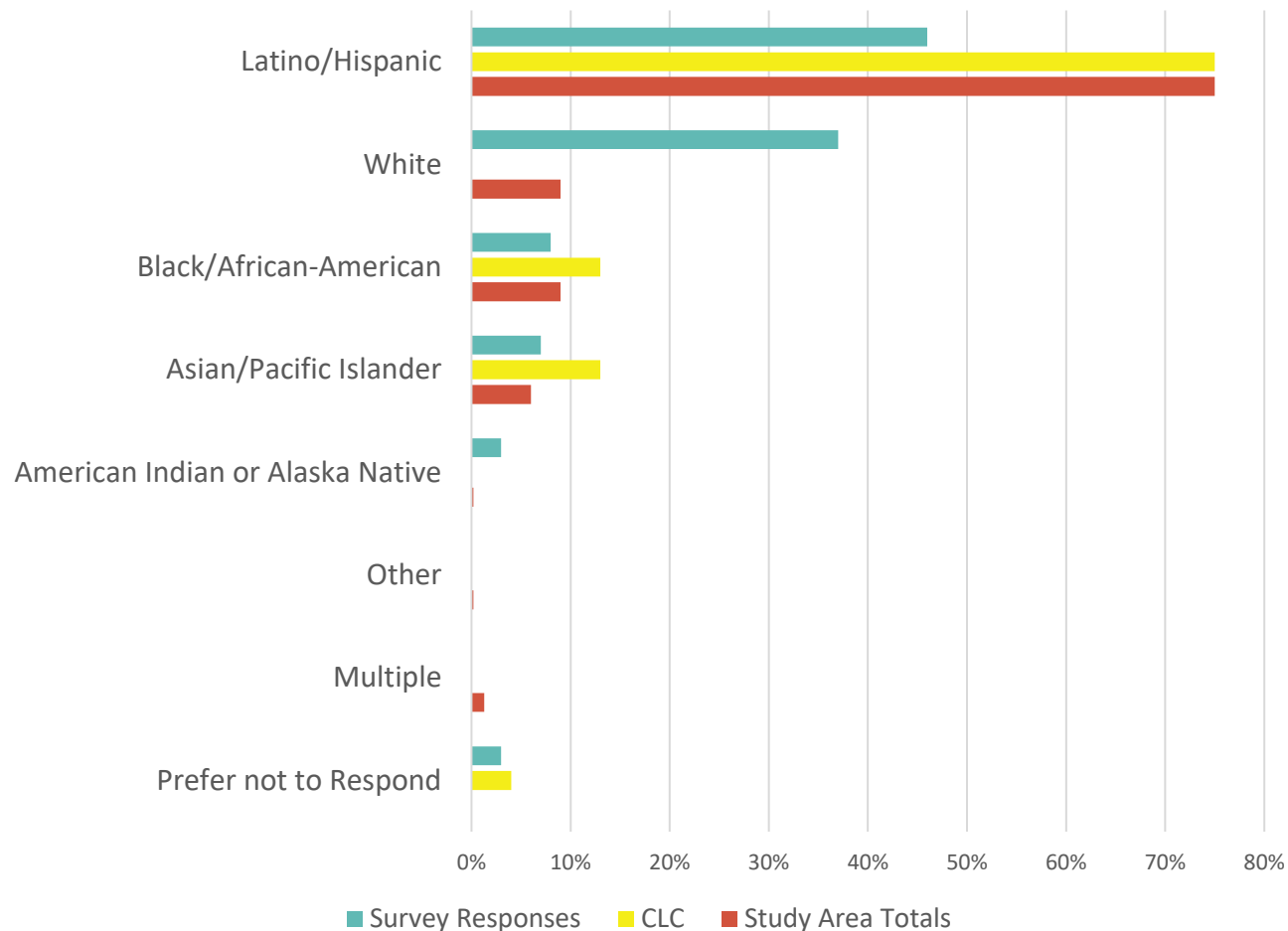
# Outreach and Engagement Approach

- > Task Force established as a broad coalition of community leaders and advocates, industry, and elected representatives
- > CLC brings an expanded range of community perspectives, lived experience, expertise, and leadership skills into the process
- > Working Groups engage Task Force and CLC members with specific interest, experience, or stake in detailed topic areas
- > Outreach and engagement throughout, including surveys and public workshops, to gather priorities and input from general public

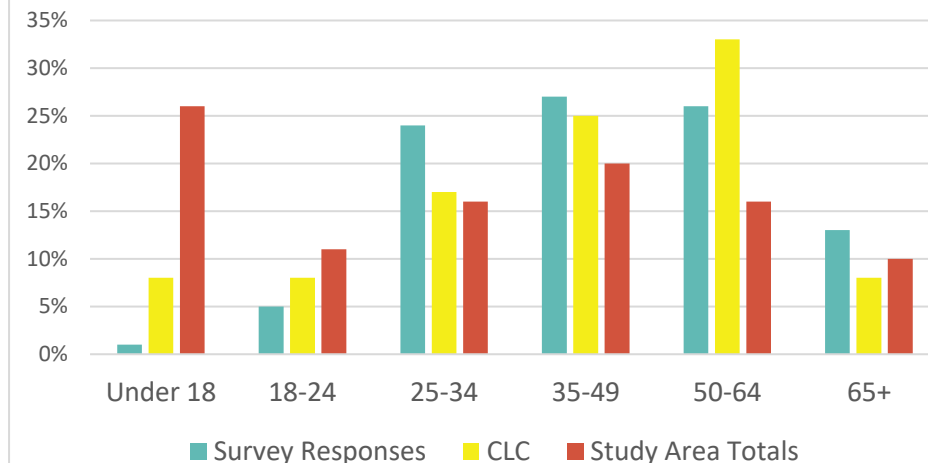
As we move forward into more substantive conversations around **strategies, projects, and programs**, we want to continue building an **inclusive, effective, and meaningful** outreach and engagement plan

# Participant Demographic Characteristics

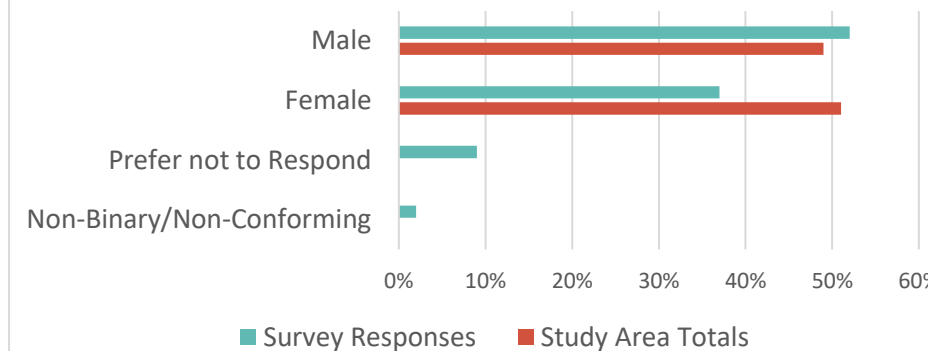
### Race and Ethnicity



### Age Groups



### Sex and Gender



“Study Area Totals” reflects combined data for all census tracts fully or partially included within the I-710 Study Area Boundary

(Source: American Community Survey 2019 5-Year Estimates)

# Methods for Meaningful Engagement

> Procedural Equity requires us to:

- **Meaningfully engage** with a sample of community members that **reflects** the study area's overall population
- Communicate in a **transparent and accountable** way about how community input is reflected in the **decision-making outcomes**.

# Methods for Meaningful Engagement

- > Procedural Equity requires us to meaningfully engage with a sample of community members that reflects the study area's overall population, and to communicate in a transparent and accountable way about how community input is reflected in the decision-making outcomes.
- > Discussion for today:
  - **Who** do we need to connect with?
  - **What** type of interactions are most effective?
  - **Where** should we be having these conversations?
  - **When** is the right time to most effectively engage?
  - **How** do communicate about **why** it is important to participate?

# Methods for Meaningful Engagement

- > Procedural Equity requires us to meaningfully engage with a sample of community members that reflects the study area's overall population and to communicate in a transparent and accountable way about how community input is reflected in the decision-making outcomes.
- > Discussion for Today: **Who** do we need to connect with? **What** type of interactions are most effective? **Where** should we be having these conversations? **When** is the right time to most effectively engage? **How** do communicate about **why** it is important to participate?
- > Potential engagement methods for next phases of the project:

Easy-to-understand survey, using existing partnerships for distribution and available in multiple languages

In-person and/or virtual public meetings in partnership with CBOs

Booths at community events and gathering spaces, including markets, schools, businesses, cultural/faith-based events

Ongoing communications through e-blasts, newsletters, social media, advertising, and in-person canvassing

Focus groups or smaller group meetings

# Questions for the EWG

- > In your experience, which of these engagement or outreach methods below have been most or least effective for developing a list of community-driven strategies and projects?  
Ideas for other methods?

Easy-to-understand survey, using existing partnerships for distribution and available in multiple languages

In-person and/or virtual public meetings in partnership with CBOs

Booths at community events and gathering spaces, including markets, schools, businesses, cultural/faith-based events

Ongoing communications through e-blasts, newsletters, social media, advertising, and in-person canvassing

Focus groups or smaller group meetings

# Questions for the EWG

- > In your experience, which of these engagement or outreach methods have been most or least effective for developing a list of community-driven strategies and projects? Ideas for other methods?
- > How can we most effectively engage individuals without access to/comfort using technology, facing language barriers, with disabilities, or the unhoused, when developing a list of strategies and projects?

# Questions for the EWG

- > In your experience, which of these engagement or outreach methods have been most or least effective for developing a list of community-driven strategies and projects? Ideas for other methods?
- > How can we most effectively engage individuals without access to/comfort using technology, facing language barriers, with disabilities, or the unhoused, when developing a list of strategies and projects?
- > Are there other specific groups or geographic areas that you are concerned have not been reached or engaged meaningfully? How can we expand our reach to these specific groups and geographic areas?

# Questions for the EWG

- > In your experience, which of these engagement or outreach methods have been most or least effective for developing a list of community-driven strategies and projects? Ideas for other methods?
- > How can we most effectively engage individuals without access to/comfort using technology, facing language barriers, with disabilities, or the unhoused, when developing a list of strategies and projects?
- > Are there other specific groups or geographic areas that you are concerned have not been reached or engaged meaningfully? How can we expand our reach to these specific groups and geographic areas?
- > In your experience, what strategies work best when communicating about the importance of the Task Force's work? How do you typically explain this work to members of your own community?

# Closing, Next Steps, and Thank You

# Upcoming Meetings

## Working Groups

- > **Zero-Emission Truck Working Group Meeting #7**

*Tuesday, June 21, 1-2:30 pm*

- > **Equity Working Group #4**

*Thursday, June 23, 5-7 pm*

## Community Leadership Committee

- > **CLC Meeting #3**

*Thursday, May 19, 5-7 pm*

- > **CLC Meeting #3 continued**

*Monday, May 23, 5-7 pm*

## Task Force

- > **Task Force Meeting #9**

*Monday, June 13, 5-7:30 pm*

# Stay connected to this project



Michael Cano, *Executive Officer (Interim)*  
*Countywide Planning & Development*  
Metro

One Gateway Plaza, MS 99-13-1  
Los Angeles, CA 90012



213.922.4710



*710corridor@metro.net*



*metro.net/projects/i-710-corridor*



*@metrolosangeles*



*losangelesmetro*

**Thank you for joining us!**