

CRENSHAW/LAX TRANSIT PROJECT — DEADLINE EXTENDED!

INVITATION TO HIGH SCHOOL STUDENTS: NEIGHBORHOOD ART CONTEST

Create an artwork that celebrates your community along the Crenshaw/LAX Transit Project, including the Crenshaw District, Inglewood, Westchester and surrounding areas in South LA.

Metro is producing commemorative pins inspired by the artworks of high school student artists. Each pin will represent one of eight new Crenshaw/LAX Transit Project stations: Expo/Crenshaw, Martin Luther King Jr., Leimert Park, Hyde Park, Fairview Heights, Downtown Inglewood, Westchester/Veterans and Aviation/Century.

Eight student artists will be selected by a committee of local community leaders and cultural figures. The selected artworks will be the inspiration for eight final pins, which will be distributed to the public free of charge in celebration of the opening of the rail project.

Eligibility:

This contest is open to high school students only, grades 9-12. One entry per student will be reviewed. (Note: The families of Metro employees and contractors are not eligible.)

All entries must be received by the DEADLINE of April 8, 2022. In-person entries must be submitted by 3pm (PDT). Online entries must be submitted by 5pm (PDT).

Eight student artists whose artworks are selected will receive:

- > \$500 compensation for the submitted artwork*
- > Public recognition
- > Award certificate
- > Complete set of commemorative pins
- > Brochure with student artwork featured

Instructions:

- > Submit a two-dimensional artwork made on 8.5" x 11" paper.
- > All image-making media is acceptable (i.e. collage, painting, drawing, computer graphics). See artwork considerations on the next page.
- > Provide a brief statement (200 words or less) about how your artwork celebrates one of the neighborhoods along the Crenshaw/LAX Transit Project and your meaningful connection to the community (the Crenshaw District, Inglewood, Westchester and surrounding areas in South LA.)
- > Entry form should be attached to final artwork and dropped off at the address below, or scan your artwork and submit through the **➤ online form** (https://bit.ly/clax_art).

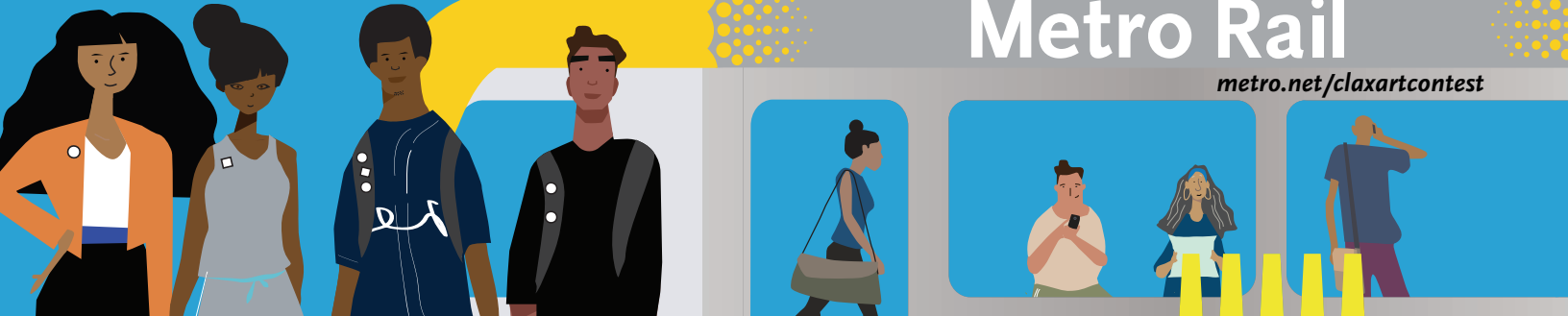
Crenshaw/LAX Transit Project Office
Attn: Crenshaw/LAX Art Contest
3699 Crenshaw Bl
Los Angeles, CA 90016
Hours: Monday – Friday, 7am – 3pm

*Must be eligible to work in the United States as determined by the Department of Homeland Security and/or U.S. Immigration Laws.



Visit metro.net/claxartcontest or scan the QR code for the online form.





CRENSHAW/LAX TRANSIT PROJECT





GUIDELINES FOR ENTRIES

Review Criteria:

Entries will be reviewed according to the criteria below:

Connection to neighborhood – 50%

Ties to the Crenshaw/LAX Transit Project area through previous or current residence, going to school or having personal roots.

Concept – 30%

Artist statement, capturing the unique character of your neighborhood and your connection to it.

Technique – 20%

Skillfulness in executing the artwork.

Artwork Considerations:

Please **do not** include any of the following:

- > Media that is difficult to photograph or capture in two-dimensional formats, including heavy textures, chunky materials or objects in collages.
- > Fluorescent or metallic colors. These inks will not be available in pin production.
- > Visual representations of proprietary names or brands of existing businesses, as well as business or corporate logos.
- > Depictions involving alcohol, smoking, violence, illegal activity, nudity, obscene matter and items that would be harmful/disruptive in the transit system.

Terms:

The selected student artwork will become the property of Metro. Metro will retain full usable rights, in perpetuity, including commercial and non-commercial use, for reproductions across a host of possible media, in addition to the initial printing of pins. **Metro retains the right to crop the artwork to suit usage requirements.** Student artists retain the right to reproduce submitted artwork for self-promotion purposes, but artwork must not be sold or used by the student artist for any commercial purpose without prior written Metro approval.

Selected student artists (and parents or guardians for those under 18) will be required to sign an agreement regarding usage terms.

For more information about the contest, please contact QvaleE@metro.net.

All information contained herein does not constitute either an expressed or implied contract and these provisions are subject to change.



ENTRY FORM

By sharing the information included in this application, the entry form allows the information, including any artwork, to be shared with Metro staff and those on the evaluation team for the purpose of reviewing the artworks and selecting student artists for the project. As a public agency, Metro will safeguard any Personally Identifiable Information (PII) and Intellectual Property (IP) submitted, subject to Metro's obligations under the Public Records Act and other applicable laws. This information will be retained by Metro for up to five (5) years. The evaluation team will not retain the collected information.

Name

Phone Number

Email Address

Zip Code

What school do you attend?

What grade are you in?

9TH

10TH

11TH

12TH

The Crenshaw/LAX Transit Project will serve the Crenshaw District, Inglewood, Westchester and surrounding areas in South LA with eight new stations. Which station neighborhood do you feel most personally connected to?

Expo/Crenshaw Station
(Exposition Bl/Crenshaw Bl)

Martin Luther King Jr. Station
(Martin Luther King Jr. Bl/Crenshaw Bl)

Leimert Park Station
(Vernon Av/Crenshaw Bl)

Hyde Park Station
(Slauson Av/Crenshaw Bl)

Fairview Heights Station
(Florence Av/West Bl)

Downtown Inglewood Station
(Florence Av/La Brea Av)

Westchester/Veterans Station
(Florence Av/Hindry Av)

Aviation/Century Station
(Century Bl/Aviation Bl)

Please describe how your artwork relates to the station neighborhood you elected to represent and your connection to this community.
