

Welcome!

**Central Los Angeles Area
Projects Update Meeting
September 25, 2024**

Housekeeping

Today's meeting is being recorded.



Attendee cameras are turned off and microphones are muted.



During the meeting, questions and comments can be submitted using the Q&A icon.



For technical support, call or text 213.276.6008

Code of Conduct

Metro is committed to ensuring that all participants can fairly and clearly share ideas, comments and concerns about this project. To provide a safe and equitable process, we are asking for your help.

During this meeting, please:

1. Respect the format of the meeting and allow everyone an opportunity to comment
2. Treat fellow community members, agency representatives, Metro staff and others with respect



Welcome and Agenda

Thank you for joining us!

Metro Agency Updates (Liz Andalon)

Central LA Area Team (Liz Andalon)

Link Union Station – Utility Relocation (Danielle Valentino, Scott McConnell)

Division 20 Portal Widening and Turnback Facility Project (Ned Racine)

Eastside Access Improvements Project (Raul Preciado)

Metro Center Project (Raul Preciado)



Central LA Community Outreach- Summer '24



**LA River Path Project
@ CicLAMini**



**Central LA Team @ Ward
Economic Development
Corporation Back to School
Community Event**



**K Line Northern Extension (KNE)
Community Meeting @ Dorsey
High School**

PSAC Community Listening Sessions



Your Voice Matters: Shape the Future of Transit Safety!

The PSAC is hosting three Community Listening Sessions, and we want to hear from you! Learn about the Implementation Plan for the Transit Community Public Safety Department and share your vision for our new Chief of Police and Emergency Management. Your input will help shape the future of safety in our community.

Full Details: <https://www.metro.net/about/public-safety-advisory-committee/>

Community Listening Sessions



Thursday, September 26, 2024
6 – 7:30 pm

JOIN IN PERSON

Los Angeles Union Station
Fred Harvey Room (south of the Main Entrance)
800 N. Alameda Street, Los Angeles, CA 90012



Wednesday, October 9, 2024
6 – 7:30 pm

VIRTUAL

Zoom webinar: <https://zoom.us/j/93874769102>



Saturday, October 26, 2024
10:30 am – 12 pm

JOIN IN PERSON

Michelle Obama Neighborhood Library
5870 Atlantic Avenue, Long Beach, CA 90805

FY25 Budget Book

Los Angeles County
Metropolitan Transportation Authority

Adopted Budget

July 1, 2024 – June 30, 2025

FY25

Metro's annual budget for the 2024 – 25 fiscal year (July 1st through June 30th, 2025) is now available. You can leave comments on the FY25 Adopted Budget Book at budget.metro.net.



Metro

Metro Youth Council

- > Applications open through October 1st.
- > The goal of the Metro Youth Council is to develop the capacity of youth 14-17 yrs. old to share their ideas and perspectives about Metro's projects and initiatives.
- > Metro is hosting virtual information sessions throughout the month of September. Visit metro.net/youth-council for more information.



LIFE Program

- > The Low-Income Fare is Easy (LIFE) Program provides transportation assistance to low-income individuals in Los Angeles County.
- > The LIFE program offers 20 free rides a month or fare discounts that may be applied to any LIFE participating transit agency.
- > New LIFE Program participants get 90-day free rides
- > Learn more at metro.net/life



Facebook Groups: Metro Central



Join the conversation on the Central Area Facebook Group by visiting:
www.facebook.com/groups/metrocentral/.



Central Los Angeles Area Team

Our Mission: To serve the riders and stakeholders in LA County who use our system, or engage with Metro as it plans, builds and operates a world-class transportation system.

Centralized communications approach with the community

Core community relations team

Serve as a conduit of community priorities within Metro

Oversee outreach programs for Metro projects in planning, design and construction

Address community issues related to Metro bus and rail operations

Educate communities and riders on key Metro initiatives



Central Los Angeles Area Communities

Downtown LA

Arts District, Bunker Hill, Chinatown, Civic Center, Echo Park, Elysian Park, Fashion District, Financial District, Historic Core, Industrial District, Little Tokyo, Skid Row, South Park

Central LA

Arlington Heights, Hancock Park, Harvard Heights, Koreatown, Larchmont, MacArthur Park, Mid-City, Mid-Wilshire, Pico-Union, Westlake

Eastside

Boyle Heights, El Sereno, Lincoln Heights

Northeast LA

Atwater Village, Cypress Park, Eagle Rock, Elysian Valley, Glassell Park, Highland Park, Montecito Heights, Mt. Washington, Monterey Hills

Hollywood

East Hollywood, Griffith Park, Hollywood, Hollywood Hills, Los Feliz, Silver Lake

Central Los Angeles Area Team

Construction Relations and Mitigation Programs Team

- Olga Arroyo, Community Relations Director
- Raul Preciado Rivera, Principal Community Relations Officer
- Ned Racine, Principal Community Relations Officer

Local Government, Operations and Planning Projects Team

- Matthew Marquez, Community Relations Manager
- Elizabeth Andalon, Principal Community Relations Officer

New Media Team

- Wendy Cardona, Community Relations Manager
- Robyn Lopez, Principal Community Relations Officer



Central Los Angeles Area Projects

Project	Status/Project Completion
Eastside Access Improvements	Completed, 2024
Center St Project	Completed, 2024
Purple Line Extension, Section 1	Construction, 2025
Div. 20 Portal Widening & Turnback Facility	Construction, 2026
Link Union Station	Utility Adjustment/Early Works and Federal Environmental Review Underway
North Hollywood to Pasadena Transit Corridor	Planning Completed. Design Underway.
LA Union Station Forecourt and Esplanade Project	Planning Completed. Construction Funding Needed.
Doran Street Grade Separation Improvements	Planning Completed. Design Underway.
Vermont Transit Corridor	Planning (Environmental Review)
K Line Northern Extension	Planning (Environmental Review)
LA River Path	Planning (Environmental Review)
Arts District/6th St Station	Planning (Environmental Review)
Southeast Gateway Line A Line/Slauson to Union Station	Planning (Study Underway)
Alameda St Mobility Project	Early Planning

Meet the Metro Team

Environmental Study Phase

Program Management

Carlos Montez

Design and Construction (Phase A)

Program Management

Scott McConnell

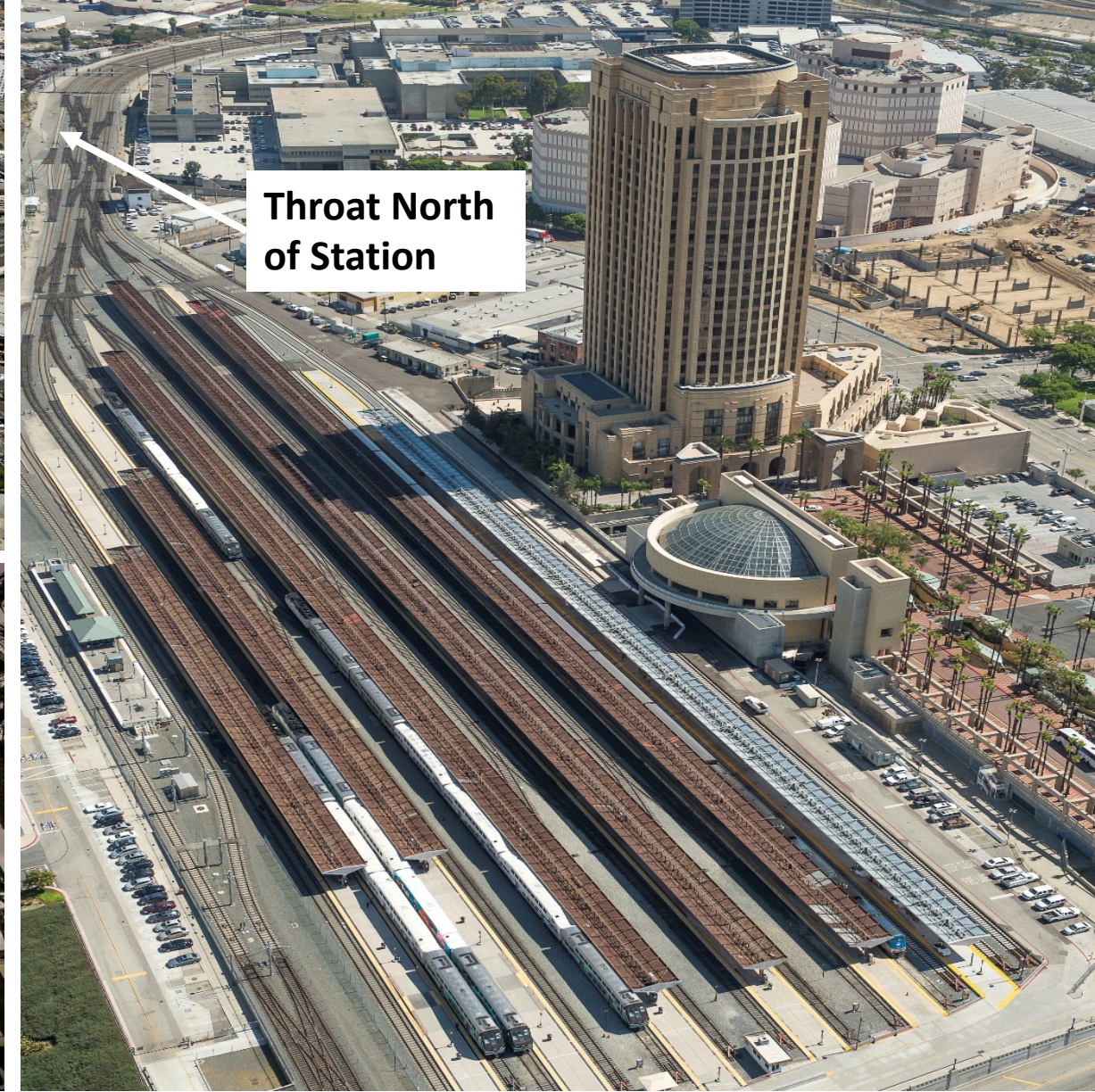
Construction Relations

Olga Arroyo

Raul Preciado

Art & Design

Mayen Alcantara



Stub-ended tracks

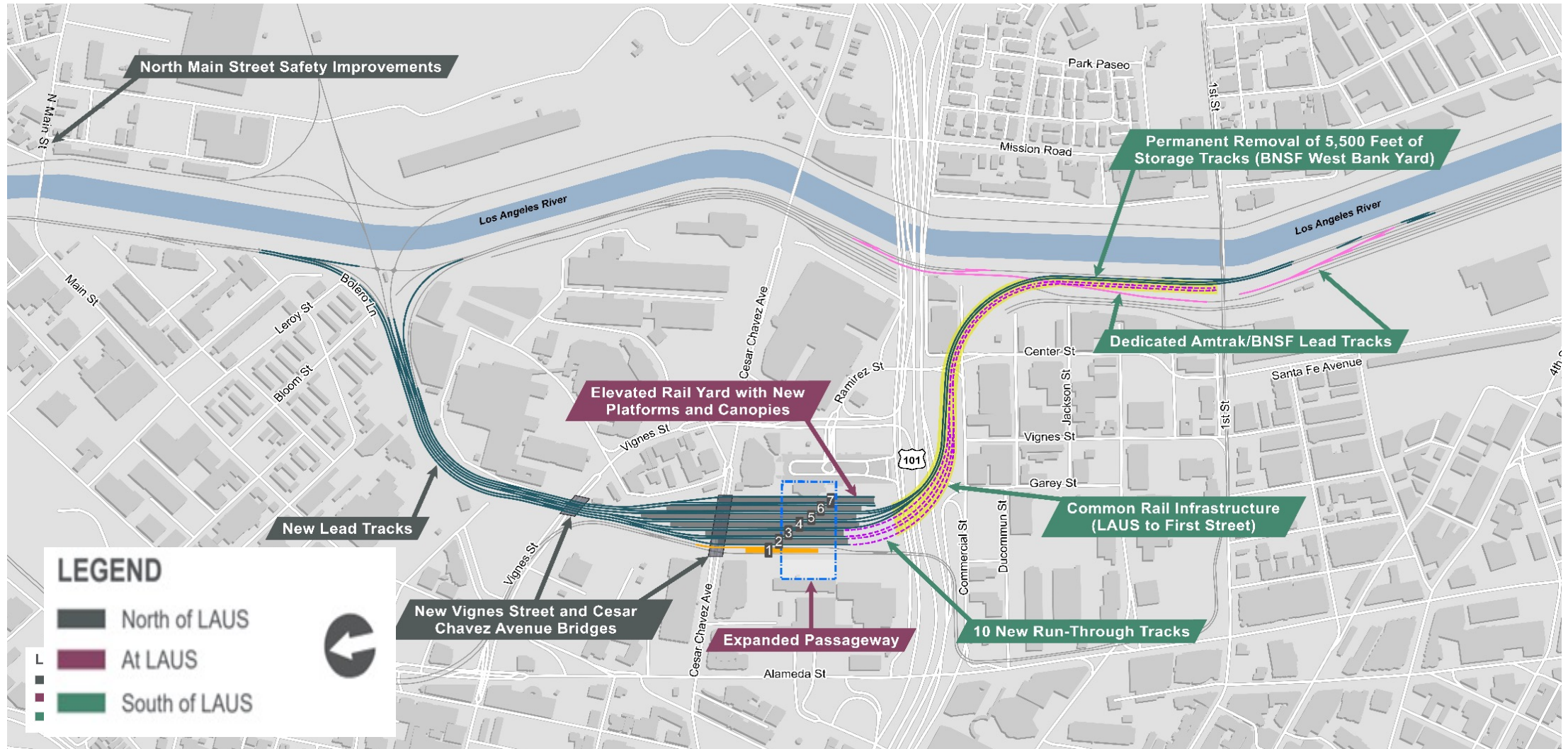
Throat North of Station

Los Angeles Union Station Today

Built in 1939 | Union Station is a stub end station and has not been modernized since it was built

Project Overview

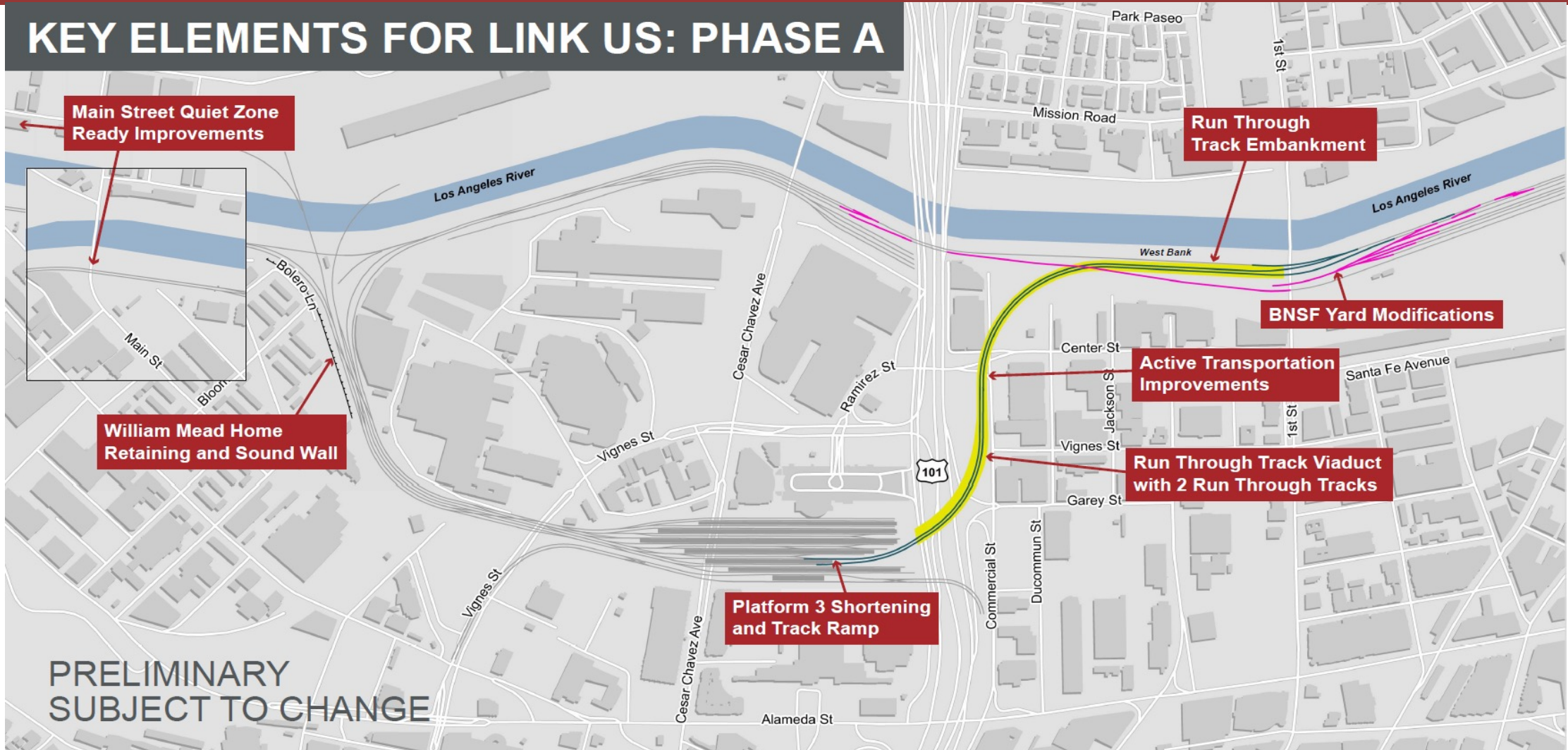
Major Project Components – Build Alternative



Link US – Phase A

Construction Management General Contractor Project Delivery

KEY ELEMENTS FOR LINK US: PHASE A



PRELIMINARY
SUBJECT TO CHANGE



Metro

Link US Project Full Buildout (Phases A and B)

New Run Through Tracks and New Platforms



Metro

Conceptual rendering

Recently Completed (Summer 2024)

Draft EIS/SEIR Document- Public Release and Comment Period

45-Day Public Review on the Draft EIS/SEIR: 6/21/24 through August 9, 2024

Copies of Draft EIS/SEIR were available at these locations:

1. LA Central Public Library – Downtown
2. Lincoln Heights Branch Library
3. Chinatown Branch Library
4. Little Tokyo Branch Library
5. Benjamin Franklin Branch Library in Boyle Heights
6. LA Union Station/Metro Library
7. LAUS/Metro Records Management Center
8. William Mead Homes (WMH) Administrative Office
9. Care First Village Administrative Office
10. Vernon City Hall
11. Electronic copy on Metro Link US website

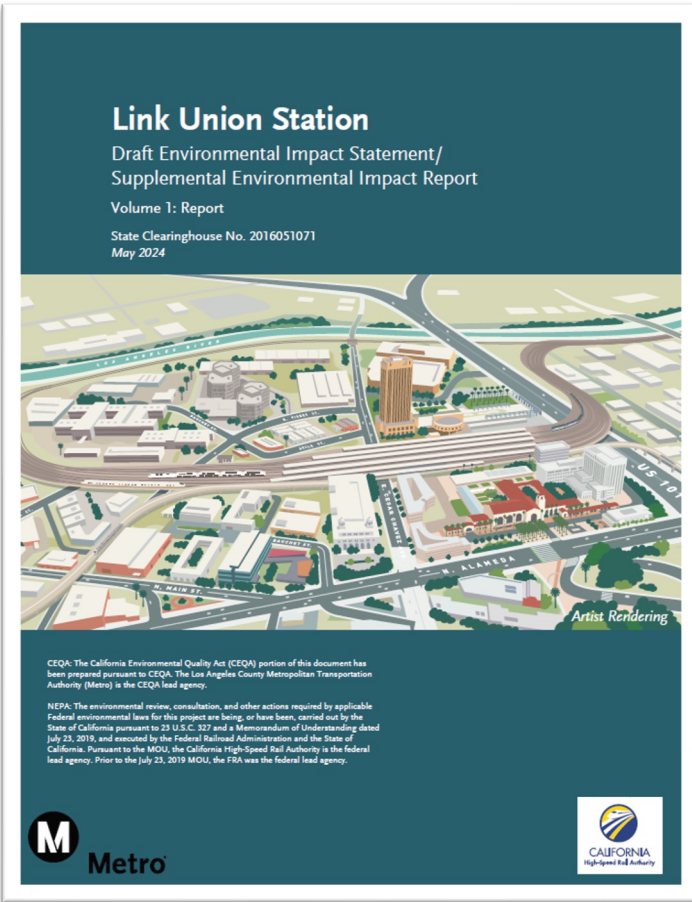
The Draft EIS/SEIR was available for review at the WMH Administration Office and RAC office.

The Executive Summary was made available in multiple languages including English, Spanish, Korean, Japanese, Chinese, Khmer, and Vietnamese.

Formal Comment Submittals via:
Email, mail, website, comment card, court reporter

Recently Completed (Summer 2024)

Open House and Public Hearing on the Draft EIS/ Supplemental EIR



Attendance Summary

- > Approx. 60 total public attendees (29 in-person; 30 attended virtually)

Interpretation services

- > Language interpretation was available in Chinese Mandarin, Cantonese, Spanish, and Japanese
- > Public comments were received verbally and in writing

Highlights

- > During the most recent **45-Day public comment period** on the Draft Environmental Document (Draft EIS/SEIR), **more than 130** public comments were submitted.
- > The Link US Team is currently reviewing & preparing responses to comments for inclusion into the final environmental document.



Highlights of Recent Key Stakeholder Briefings (Spring/Summer 2024):

City and Elected Official Coordination

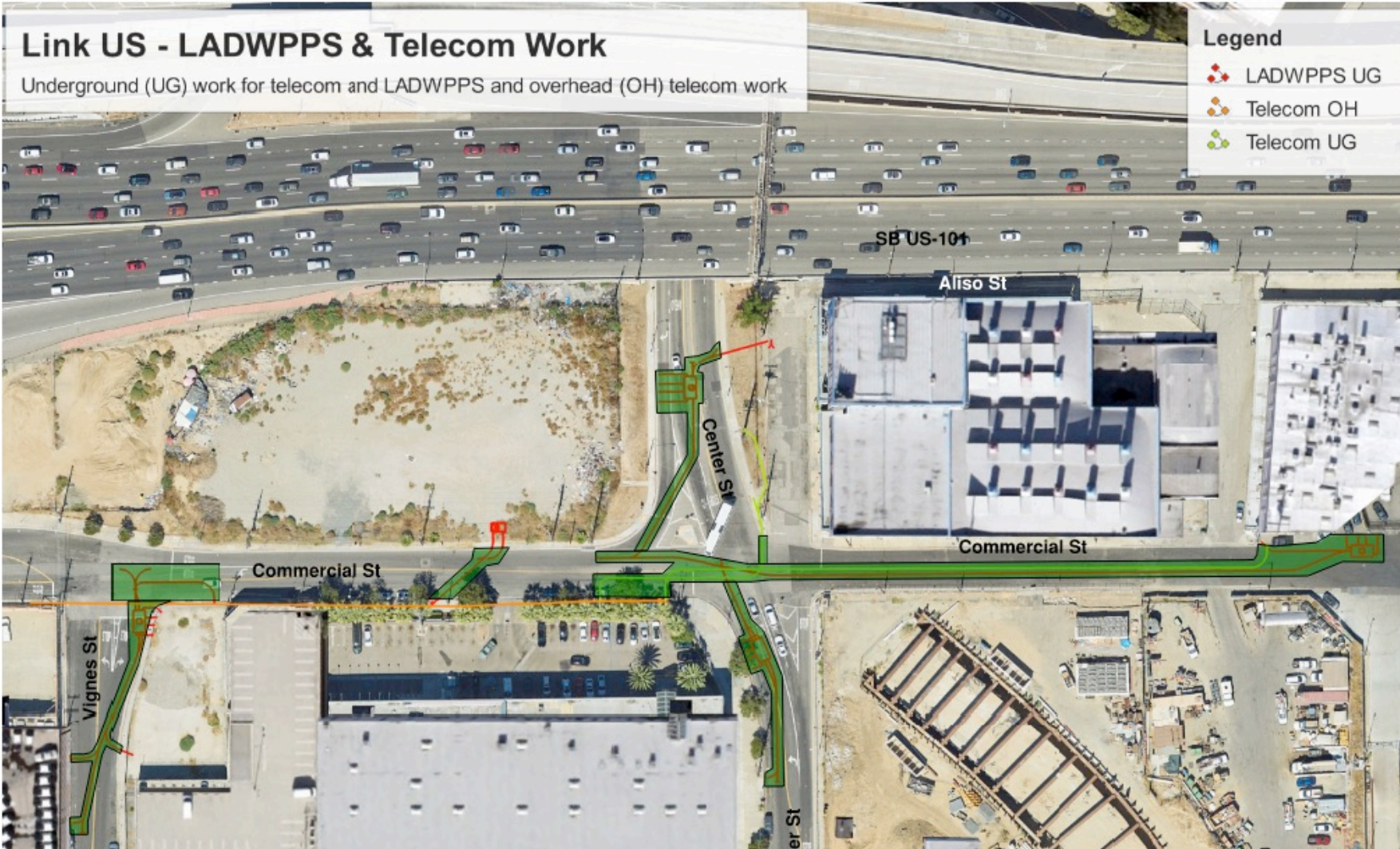
- > SD-4 (Hahn), SD-1 (Solis), City of LA Mayor (Bass), CD-14 (De Leon), CD-1 (Hernandez)
- > City of Vernon Business and Industry Commission

Stakeholder Groups

- > Metro Advisory Councils & Service Councils
- > William Mead Homes (HACLA)
- > Los Angeles River Artists and Business Association (LARABA)/Arts District Community Council LA (ADCCLA)
Joint Land Use Committee
- > Little Tokyo Business Improvement District (LTBID)
- > Little Tokyo Community Council (LTCC)
- > El Pueblo de Los Angeles Historical Monument
- > Historic Cultural North Neighborhood Council
- > Central City Association (CCA)
- > LA Biz Fed

Link US – Near Term Activities

Advanced Utility Relocations – 2024 Thru 2025



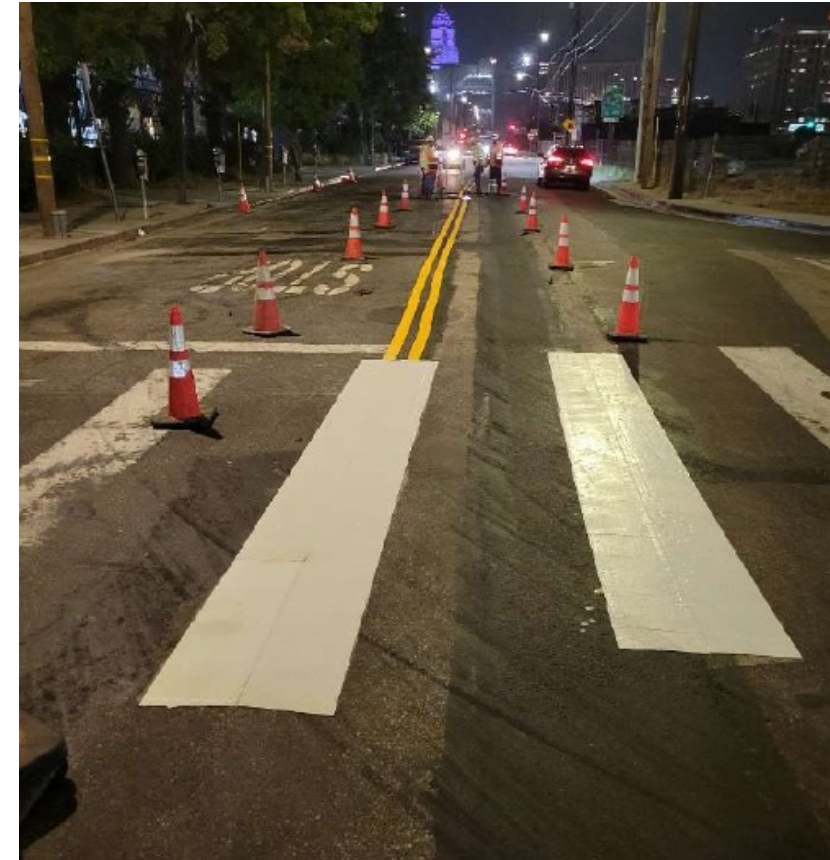
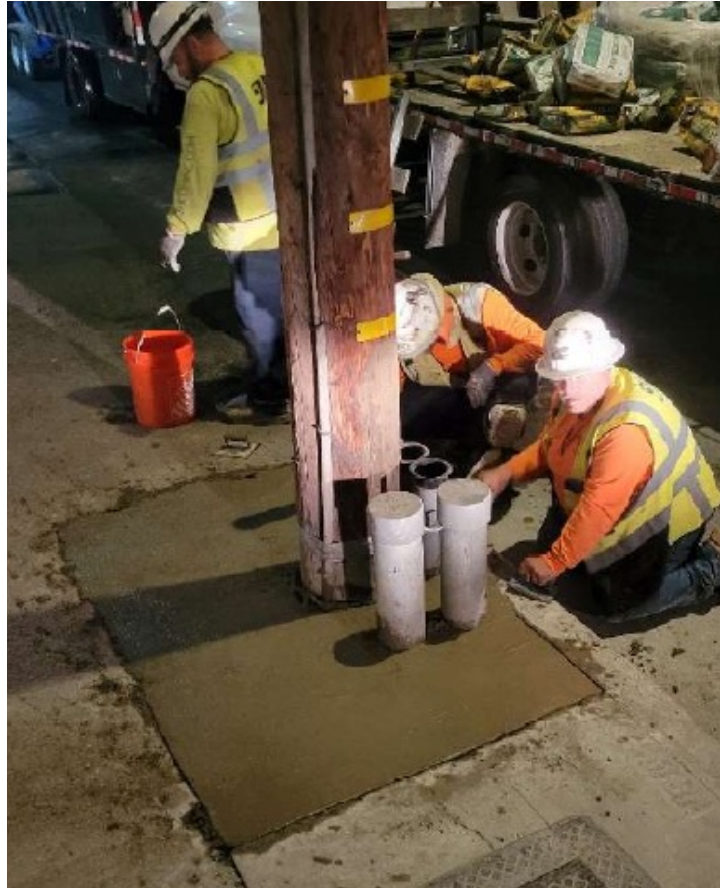
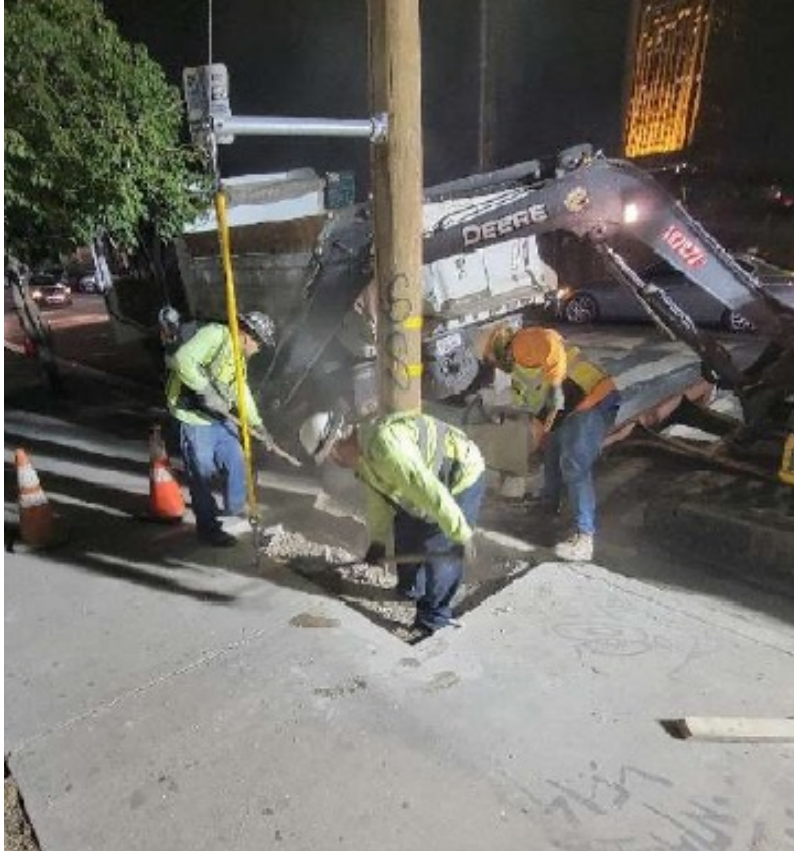
Advanced Utility Work

Look Ahead Schedule

Activity	Duration Work Hours Location	Access
LADWP-Power adjustments and cable pulling	<ul style="list-style-type: none">> Cable pulling and overhead removal scheduled for Q1-Q2 2025> Nights: 8pm – 5am Mon-Fri> Vignes St at Commercial St> Commercial St between Vignes St and Center St> Center St at Commercial St> Conduit in street construction completed June 2024	<ul style="list-style-type: none">> Local access, driveway and pedestrian access maintained> Crews will set up equipment at manholes only, maintaining access to thru traffic
Telecommunication services adjustments	<ul style="list-style-type: none">> Overhead pole replacement completed July 2024> Conduit in street construction completed August 2024 <ul style="list-style-type: none">> Next phase of work includes pulling wire through the vaults> Work is anticipated to take place in the Fall> Planned work hours are nightly, Mon – Fri, 8pm – 5am	<ul style="list-style-type: none">> Local access, driveway and pedestrian access maintained> Crews will set up equipment at manholes only, maintaining access to thru traffic

Advanced Utility Relocations – 2024 Thru 2025

Telecommunication Service Adjustments - Completed



Completed the telecommunication utility adjustment, restored impacted areas and the striping

Link US – Public Outreach Tools

- > Construction notice published on project's website: metro.net/linkus
- > Notice of work distribution to surrounding construction area
- > Coordination with adjacent stakeholders and construction projects
- > Outreach to local elected official offices and community organizations in the Arts District and Little Tokyo including
 - Business Association/Improvement Districts
 - Advocacy and civic advisory bodies

Thank You – Stay Informed

Link US Contact Information



213.922.2524



LinkUnionStation@metro.net



www.metro.net/linkus

Next stop: improving rail service.

DIVISION 20 PORTAL WIDENING AND TURNBACK FACILITY

Construction Update



Metro

Meet the Team

Project Management:

- Albert Soliz

Community Relations:

- Marlon Walker
- Ned Racine

Design-Builder:

- Tutor Perini Corporation



Project Overview

- > Anticipated opening: 2026
- > Improvements to Metro's Division 20 Rail Yard will provide faster and more frequent service on the Metro B and D lines
- > Improvements include
 - Widening of heavy rail portal
 - New turnback facility
 - Expansion, reconfiguration of rail storage tracks

Division 20 Portal Widening & Turnback Facility



Exact location of turnback tracks and storage tracks to be determined.

Current Work: North Yard

Adding and moving utilities supports additional tracks for more rail car storage.

These utilities include:

- > Fire water lines
- > Lighting duct banks
- > Main storm drain
- > Retaining wall near Commercial St



North Yard looking north

Current Work: Portal Area

Portal Widening

Once the portal is expanded from two to four tracks, the turnaround time for subway cars from the rail yard to Union Station will shrink.

The portal demolition began November 2022. When workers complete the western portal, they will switch to the east portal closer to Los Angeles River.



West portal. Blanket protects from flying objects during demolition

Current Work: Portal Area



Demolition continues near east portal site.

Current Work: Train Control for New Rail

Looking southeast, train signals have been installed in north yard.



Current Work: Nonconducting Fencing

In the south yard, workers have installed 210 feet of nonconducting (fiberglass) fence near electrical buildings.



Current Work: Preparing the South Yard

Before



Storm drain segments buried in the south yard.

Current



Upcoming Work

**Work is subject to change*

- > Demolish portal walls and tracks
- > Upgrade train communication systems
- > Complete portal foundation and walls
- > Install track and contact rails



Workers have paved a chunk of the north yard for easier access.

Construction Mitigations

Best practices on the Division 20 construction site

- > Equipment and staging areas shall be located away from noise-sensitive receivers, and noise barriers should be used when possible.
- > Minimize use of high-impact devices such as jackhammers and hoe rams.
- > Utilize lower impact devices such as concrete crushers and pavement saws.
- > Refrain from idling equipment.
- > Use frequent watering to reduce dust.



Watering truck east of One Santa Fe reduces dust.



Workers monitor noise as excavation in the south yard continues.

Stay Connected



213.922.6934



div20portalwidening@metro.net



metro.net/divison20



Project Team

Project Management:

- > Michael Harrington

Community Relations:

- > Olga Arroyo
- > Raul Preciado



Project Overview

The Eastside Access Improvements implemented streetscape, pedestrian safety and bicycle access improvements within a ½ mile radius around the now open Metro Little Tokyo/Arts District Station at 1st/Central.



Walk/Bike Esplanade



Class II BikeLanes



Storm Parkways
(Biowales)



Street Trees



Street Light LED
Conversion



Wayfinding Signage



Crosswalk Installation



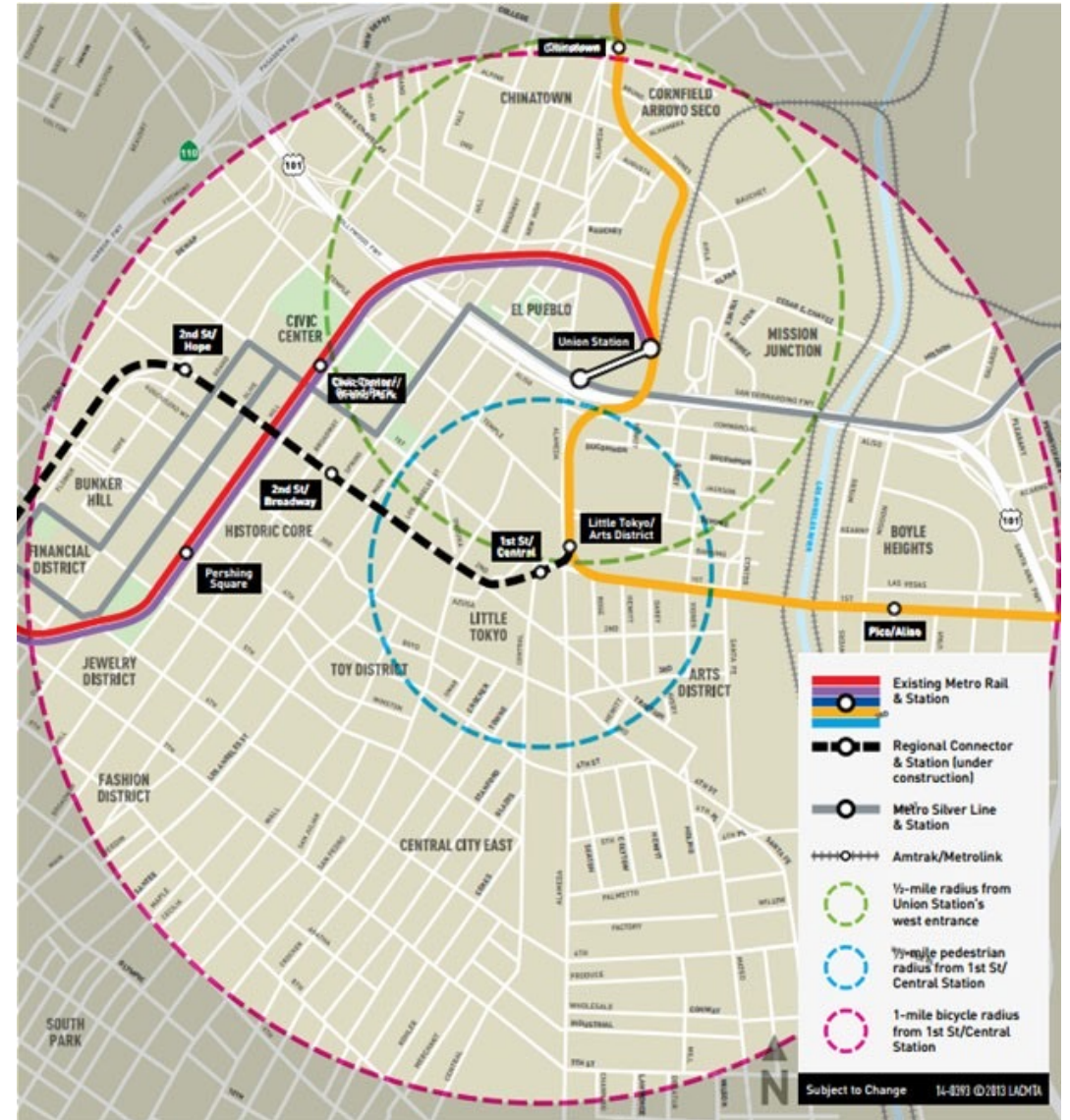
Decorative Crosswalk
Restoration



Street Furniture
Restoration



ADA CurbRamp
Installation



Look Ahead Schedule

Activity	Date/Work Hours	Access
Alameda Esplanade Light pole replacement	<ul style="list-style-type: none">• Weekdays, Fall (proposed)• Work Hours: 7am to 3:30pm	<ul style="list-style-type: none">• Thru traffic maintained• Northbound lane reduction on Alameda St, from Temple St to 1st St• Pedestrian and bicycle access maintained



Stay Connected



213.922.1111



centrallaprojects@metro.net



metro.net/eastsideaccess





Meet the Team

Project Management

- Albert Soliz
- Sangjun Lee (Jun)
- Aldon Bordenave

Amoroso: Contractor

- Nathan Berkey

Community Relations

- Olga Arroyo
- Raul Preciado

Community Enrichment & Art Program

- Mayen Alcantara
- Allison Porterfield



Metro Center Project Overview and Purpose

- > The Metro Center Project is an essential and secured facility.
- > It supports the entire Metro Bus and Rail systems across 88 cities in LA County including expansions in Measure R and Measure M projects.
- > A 26,000-square-foot one-story building, slated to be completed in 2024.



Metro Center Project – Sustainability Highlights

- > For a building with over 100 personnel, only 53 parking spaces (including 10 with electric vehicle charging station) are provided on-site as Metro will provide shuttles for employees.
- > Drought tolerant and water efficient landscaping and use of ultra-low flow fixtures.
- > Low-impact development (LID) measures including an underground cistern for reuse of rainwater.



Stay Connected



213.922.1111



centrallaprojects@metro.net



metro.net/centerproject



THANK YOU

See you in 2025!



213-922-1111



centrallaprojects@metro.net

