

# Welcome!

**Central Los Angeles Area  
Projects Update Meeting**  
May 29, 2024





# Housekeeping

**Today's meeting is being recorded.**



Attendee cameras are turned off and microphones are muted.



During the meeting, questions and comments can be submitted using the Q&A icon.



For technical support, call or text 213.276.6008



# Code of Conduct

Metro is committed to ensuring that all participants can fairly and clearly share ideas, comments and concerns about this project. To provide a safe and equitable process, we are asking for your help.

During this meeting, please:

1. Respect the format of the meeting and allow everyone an opportunity to comment
2. Treat fellow community members, agency representatives, Metro staff and others with respect



# Welcome and Agenda

---

**Thank you for joining us!**

---

Metro Agency Updates (Liz Andalon)

---

Central LA Area Team (Matthew Marquez)

---

Vermont Transit Corridor (Fulgene Asuncion/Lilian De Loza-Gutierrez)

---

Eastside Access Improvements Project (Olga Arroyo)

---

Metro Center Project (Olga Arroyo)

---

Division 20 Portal Widening and Turnback Facility Project (Ned Racine)

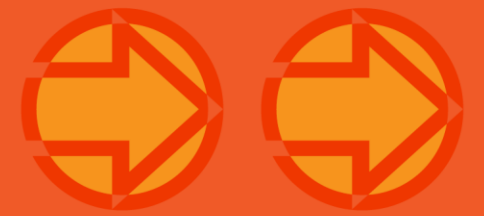
---

Link US – Utility Relocation (Olga Arroyo)

---

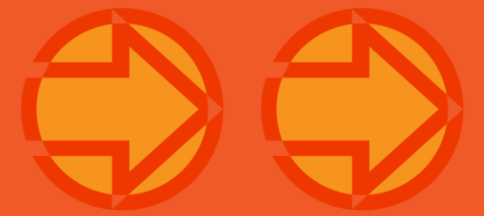


# Metro's three priorities for addressing public safety



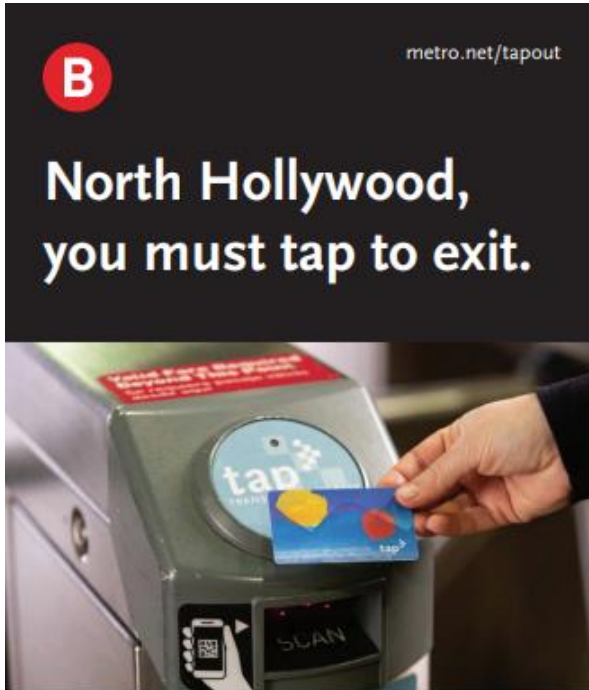
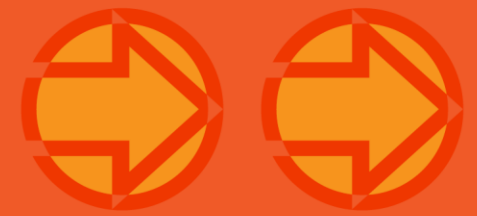
1. Increase the visible presence of uniformed personnel
2. Enhance access control
3. Strengthen partnerships to address societal issues

# Increasing our visible presence



- > Metro has begun surging presence of Metro Transit Security and Metro Ambassadors by 20%.
  - Increased teams riding on buses and trains
  - Increased issue reporting
  - Increased fare and code of conduct enforcement
- > Contracted law enforcement partners have now begun to expand their visible presence.

# STATION ACCESS CONTROL



Starting **May 28, 2024**, turnstiles will not open unless you tap your valid TAP card when you enter **and exit** North Hollywood Station.

Learn more at [metro.net/tapout](https://metro.net/tapout).

The system is safer when everyone on it is there for its intended purpose: transit.

Metro is:

- > Increasing fare enforcement through the surge of TSOs on the system.
- > Launching a pilot program at the North Hollywood B Line station fare gates to see if requiring people also to tap OUT would help confirm that valid fare was paid, improving fare compliance.
- > Right-sizing stations through interventions that improve lighting and control access to space.
- > Evaluating possible fare gate improvements.

# LIFE Program

- > The Low-Income Fare is Easy (LIFE) Program provides transportation assistance to low-income individuals in Los Angeles County.
- > The LIFE program offers 20 free rides a month or fare discounts that may be applied to any LIFE participating transit agency.
- > New LIFE Program participants get 90-day free rides
- > Learn more at [metro.net/life](https://metro.net/life)



# Metro's Pilot Investment Fund



## **Fund Administrator Request for Proposal (RFP)**

Metro seeks a certified Community Development Financial Institution to provide professional services for administering a Pilot Investment Fund.

The Fund will provide financial resources and technical assistance to small businesses and eligible nonprofit organizations within a half-mile radius of the K Line alignment and Little Tokyo/Arts District A/E Line Station.

The selected CDFI will work with private and public sector partners to establish the Fund and develop administrative guidelines.

Solicitation for RFP #PS122552 due **June 4, 2024 at 2PM PST**

Learn more here: <https://bit.ly/3KpJTso>

# Go Metro to the Hollywood Bowl

> Learn more at:

[metro.net/hollywoodbowl](https://metro.net/hollywoodbowl)



# Metro + LA Pride & Long Beach Pride

## Metro + Long Beach Pride (May 18th & 19th)

- > For the 1st time ever, Metro sponsored and participated in Long Beach Pride
- > Over 30 employees, friends, and family with Metro Civil Rights and Out@Metro participated in the 42nd Long Beach Pride Parade with Metro's Ride with Pride wrapped bus.
- > Staff also participate at the Pride Festival providing onsite registration for LIFE, Go Pass, and program information for Gateway Cities.



## Metro + LA Pride (June 8th and 9th)

- > For the 2nd year in a row, Metro is the Official Transit Partner for LA Pride – encouraging everyone to Go Metro to Pride events.
- > Metro will temporarily rename three station:
  - Chinatown Station to LA Pride Nation Station
  - Hollywood/Highland Station to Hollywood/Pride-land Stations
  - Hollywood/Vine Station to Hollywood/Pride Station.
- > Metro at the Pride Parade Ride + Pride in the Park Concert and Block Party



# Facebook Groups: Metro Central



Join the conversation on the Central Area Facebook Group by visiting:  
[www.facebook.com/groups/metrocentral/](https://www.facebook.com/groups/metrocentral/).



# Central Los Angeles Area Team

***Our Mission:** To serve the riders and stakeholders in LA County who use our system, or engage with Metro as it plans, builds and operates a world-class transportation system.*

Centralized  
communications  
approach with the  
community

Core community  
relations team

Serve as a conduit of  
community priorities  
within Metro

Oversee outreach  
programs for Metro  
projects in planning,  
design and  
construction

Address community  
issues related to Metro  
bus and rail operations

Educate communities  
and riders on key  
Metro initiatives



# Central Los Angeles Area Communities

## Downtown LA

Arts District, Bunker Hill, Chinatown, Civic Center, Echo Park, Elysian Park, Fashion District, Financial District, Historic Core, Industrial District, Little Tokyo, Skid Row, South Park

## Central LA

Arlington Heights, Hancock Park, Harvard Heights, Koreatown, Larchmont, Mid-City, Mid-Wilshire, Pico-Union, Westlake

## Eastside

Boyle Heights, El Sereno, Lincoln Heights

## Northeast LA

Atwater Village, Cypress Park, Eagle Rock, Elysian Valley, Glassell Park, Highland Park, Montecito Heights, Mt. Washington, Monterey Hills

## Hollywood

East Hollywood, Griffith Park, Hollywood, Hollywood Hills, Los Feliz, Silver Lake

# Central Los Angeles Area Team

## Construction Relations and Mitigation Programs Team

- Olga Arroyo, Community Relations Director
- Ned Racine, Principal Community Relations Officer

## Local Government, Operations and Planning Projects Team

- Matthew Marquez, Community Relations Manager
- Elizabeth Andalon, Principal Community Relations Officer

## New Media Team

- Wendy Cardona, Community Relations Manager
- Robyn Lopez, Principal Community Relations Officer
- Rene Torres, Transportation Associate I



# Central Los Angeles Area Projects

Project	Status/Project Completion
Eastside Access Improvements	Construction, 2024
Center St Project	Construction, 2024
Purple Line Extension, Section 1	Construction, 2025
Div. 20 Portal Widening & Turnback Facility	Construction, 2026
Link Union Station	Utility Adjustment and Federal Environmental Review Underway
North Hollywood to Pasadena Transit Corridor	Planning Completed. Design Underway.
LA Union Station Forecourt and Esplanade Project	Planning Completed. Construction Funding Needed.
Doran Street Grade Separation Improvements	Planning Completed. Design Underway.
Vermont Transit Corridor	Planning (Environmental Review)
K Line North Extension	Planning (Environmental Review)
LA River Path	Planning (Environmental Review)
Arts District/6th St Station	Planning (Environmental Review)
Southeast Gateway Line A Line/Slauson to Union Station	Planning (Study Underway)
Alameda St Mobility Project	Early Planning



# Vermont Transit Corridor

# Background

- > Measure M Project - \$425M (2015\$) with opening between FY2028-2030
- > Approximately 12.4 miles from Hollywood Bl to 120th St
- > Second busiest bus corridor with 36,000 daily boardings
- > Two technical studies completed - identified both feasible BRT and rail options
- > June 2022: Completed Community Based Partnership Program (CPP)
- > September 2022: Board directed staff to advance the Vermont Transit Corridor including:
  - Near-term service improvements
  - Medium-term BRT, opening for revenue service no later than FY27
  - Long-term rail (to be delivered if funding becomes available)



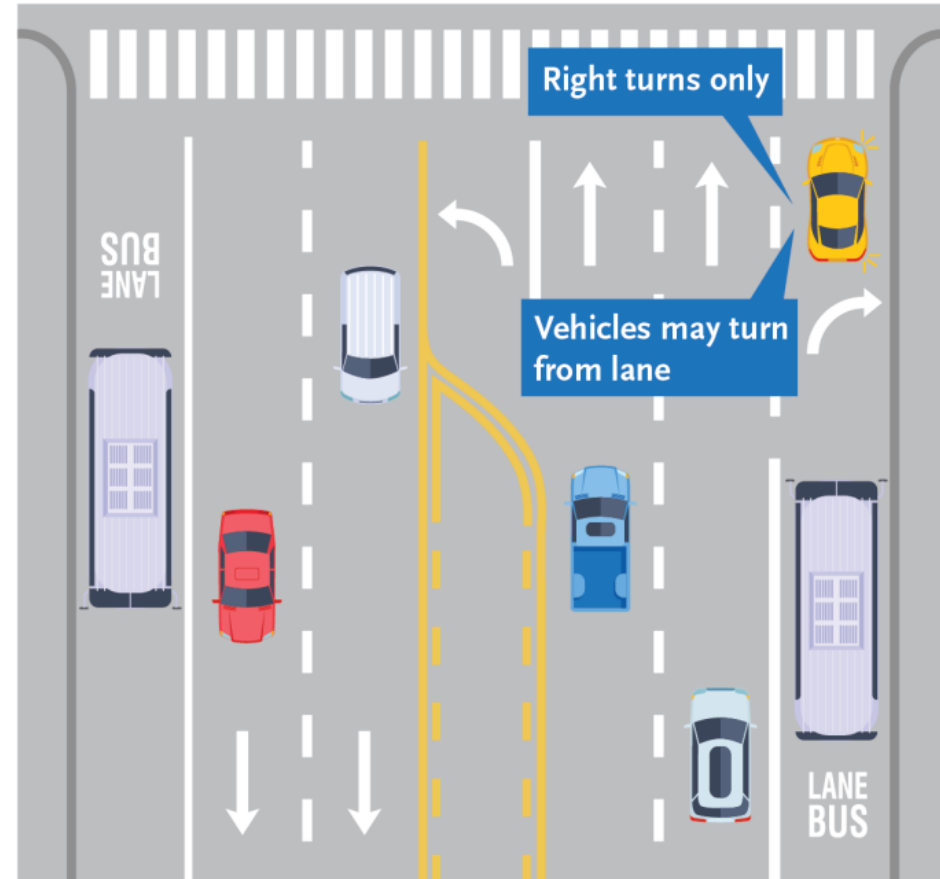
# Project Goals & Objectives

- > Improve service performance
  - Improve service reliability by maintaining consistent travel times
  - Reduce passenger travel times through the use of several key BRT elements including, dedicated bus lanes, transit signal priority, fewer stops, and other service enhancements
  - Increase ridership and reduce use of private vehicles by encouraging more people onto public transit
- > Enhance customer experience
  - Enhanced stations with a number of passenger amenities (shelters, benches, next bus info, lighting)
  - Improve pedestrian/bicycle access
  - Improve safety by separating buses from other vehicles, enhanced lighting at stations, and other safety measures
- > Invest in the community
  - Improve mobility & livability
  - Reduce greenhouse gases for healthier communities



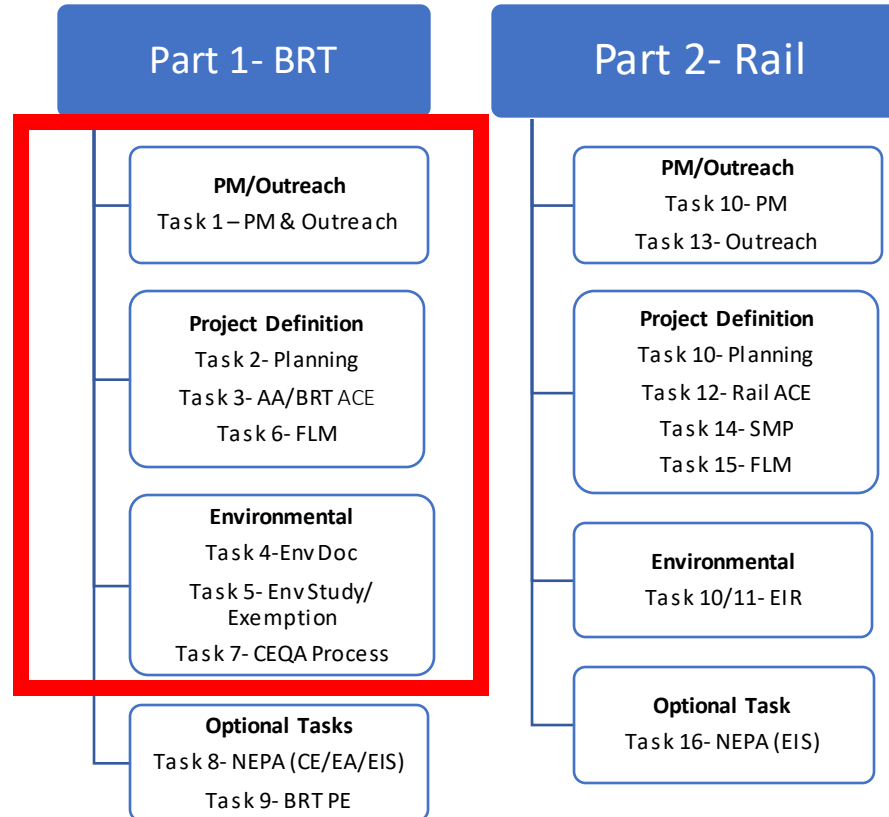
# Near-Term Improvements

- > Separate effort to implement near-term bus service improvements being led by Metro Operations
- > Curb-running bus lanes
  - Sunset to Wilshire (7-10am & 3-7pm)
  - Gage to Vermont/Athens C Line Station (all-day)
- > Transit Signal Priority
- > Project Milestones:
  - Fall 2023/Winter 2024 – community engagement
  - Spring/Summer 2024 – begin design
  - Summer 2025- implementation

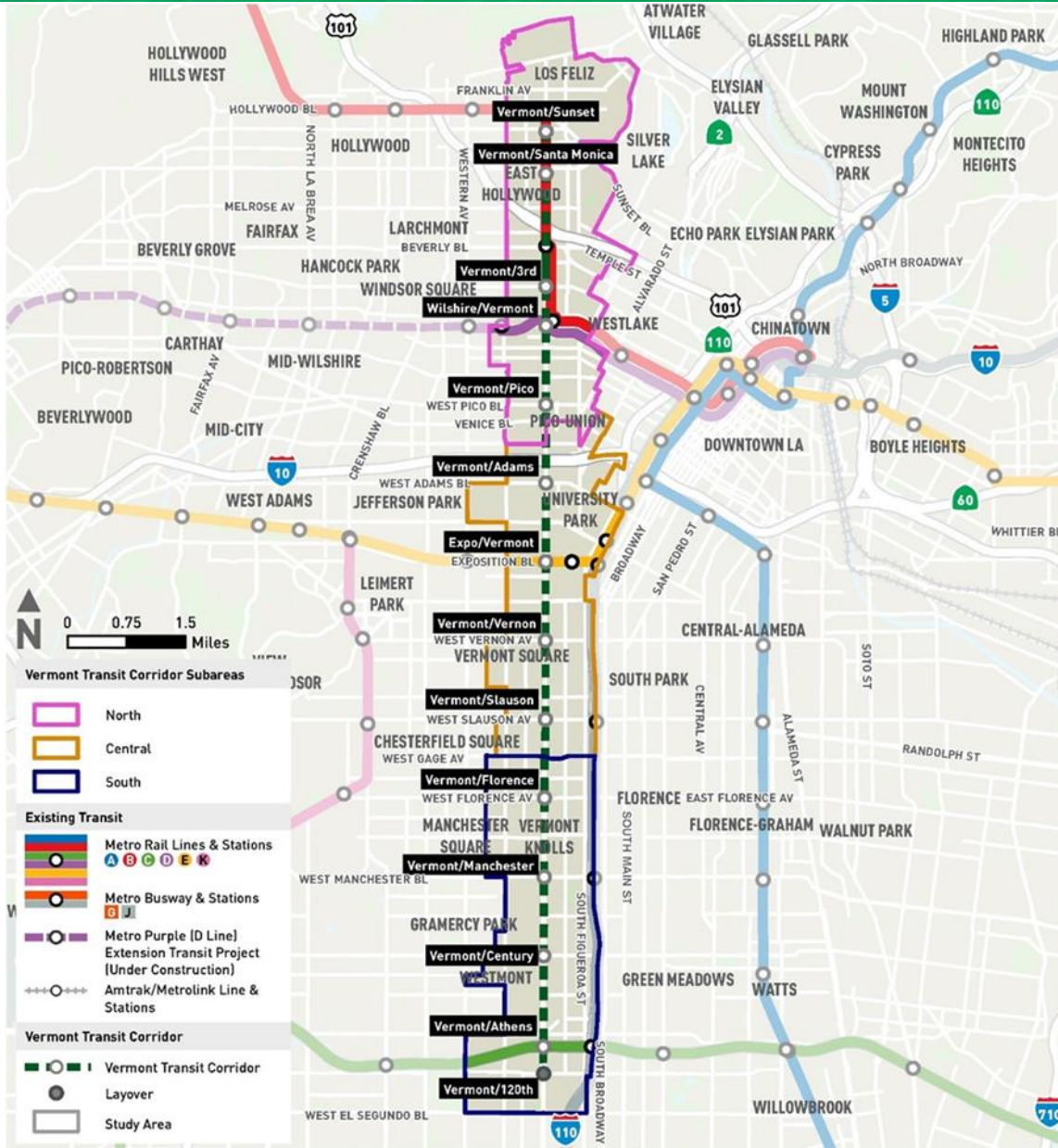


# Environmental Study Process

The planning and environmental study will be executed in two parts:



# Project Overview



Side Running BRT – north of Gage



Side Running BRT – south of Gage

- > 12.4 miles dedicated side-running BRT
- > 13 station locations with enhanced shelters and other passenger amenities



# Community Engagement



**28 Community partnerships**



**Neighborhood Council Briefings**

11 of 12 NC Briefings



**Workshops & Community Conversations**

- 3 CNA/Equity Needs Workshops
- 4 Community Meetings
- 1 TAC Meeting



**10 Pop-ups & Booths**

## Upcoming Outreach Activities



**Institutional Briefings**



**#2 TAC Meeting**



**Design Workshops/  
Community Conversations**

# Station Design Workshops

> Gather feedback on the design of BRT project and stations

<b>Tuesday, May 21 – 6:00 PM</b> First AME Church Renaissance Center 1968 W. Adams Bl, Los Angeles Transit: E Line; Bus Lines 37, 207, DASH Midtown	<b>Thursday, May 23 – 6:00 PM</b> Weingart YMCA Wellness & Aquatic Center 9900 S. Vermont Av, Los Angeles Transit: Bus Lines 117, 204/754; DASH Vermont/Main	<b>Tuesday, May 28 – 10:00 AM</b> Irmas Youth Center 11911 Vermont Av, Los Angeles Transit: Line C; Bus Lines 204/754, 206; GTrans 2
<b>Friday, May 31 – 10:00 AM</b> Los Angeles County Department of Mental Health Administration Building 523 Shatto Pl, Los Angeles Transit: B Line; Bus Lines 18, 20/720, 204 /754	<b>Saturday, June 1 – 10:00 AM</b> Masjid Omar ibn Al-Khattab 1025 W Exposition Bl, Los Angeles Transit: Lines E ; Bus Lines 204/754; DASH F	<b>Thursday, June 6 – 6:00 PM</b> Los Angeles City College – Student Union, Room A 798 N. Heliotrope Dr, Los Angeles Transit: Lines B ; Bus Lines 10, 204/754



# Planning and Environmental Review Process



- CEQA SB922 Exemption Studies
- ACE (15% Design)
- Preliminary Engineering (30% Design)



# Project Team

## **Project Management:**

- Kurt Turley
- John Mortl

## **Community Relations:**

- Olga Arroyo



# Project Overview

The Eastside Access Improvements implemented streetscape, pedestrian safety and bicycle access improvements within a ½ mile radius around the now open Metro Little Tokyo/Arts District Station at 1<sup>st</sup>/Central.



Walk/Bike Esplanade



Class II Bike Lanes



Storm Parkways  
(Biowales)



Street Trees



Street Light LED  
Conversion



Wayfinding Signage



Crosswalk Installation



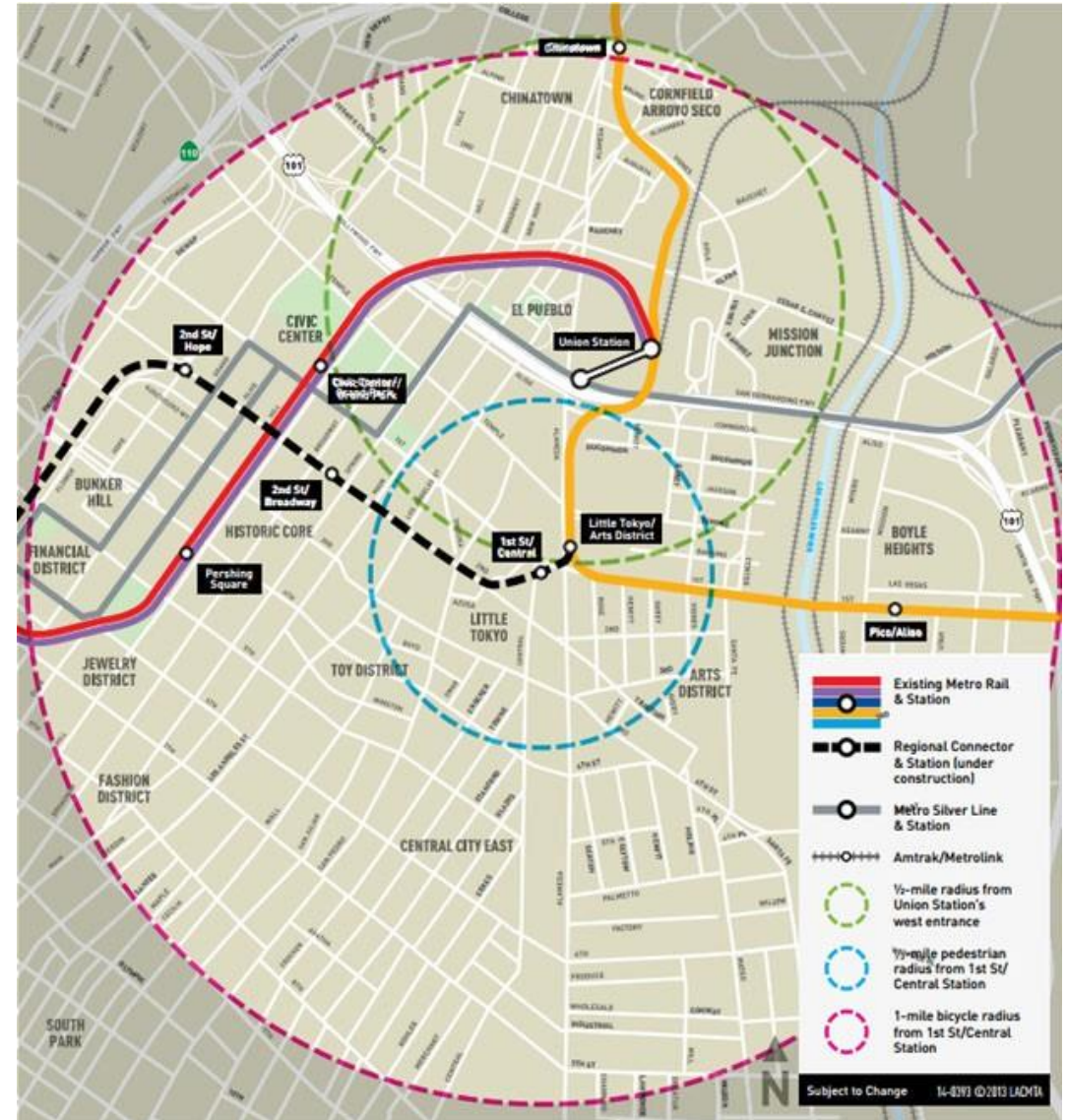
Decorative Crosswalk  
Restoration



Street Furniture  
Restoration



ADA Curb Ramp  
Installation

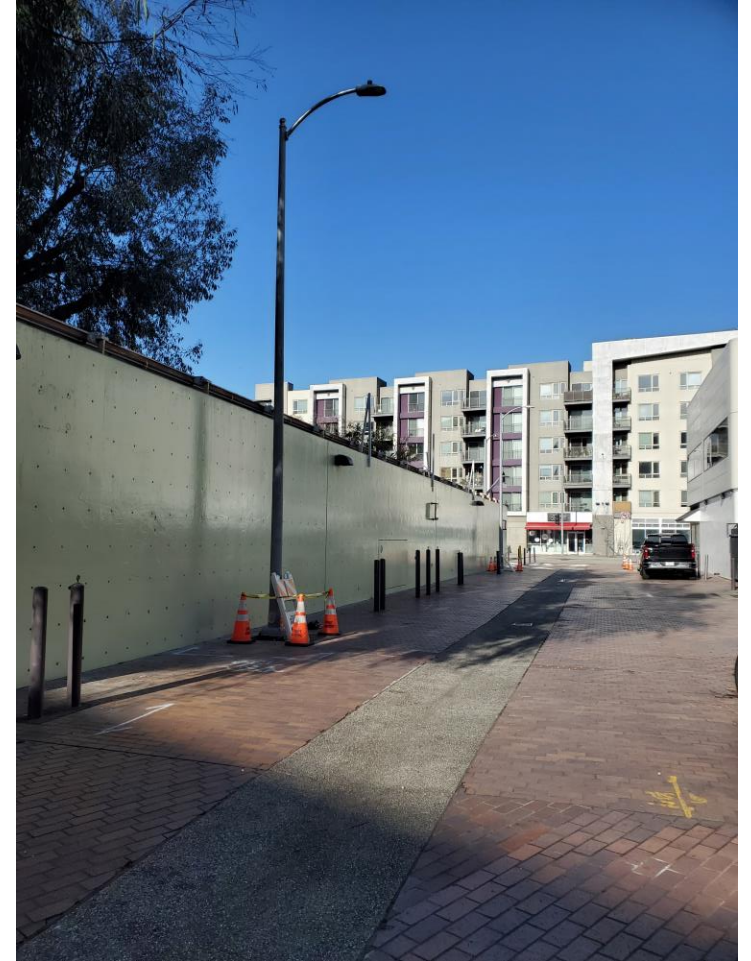


# Look Ahead Schedule

Activity	Date/Work Hours	Access
Alameda Esplanade Light pole replacement	<ul style="list-style-type: none"><li>• Weekdays, Summer (proposed)</li><li>• Work Hours: 7am to 3:30pm</li></ul>	<ul style="list-style-type: none"><li>• Thru traffic maintained</li><li>• Northbound lane reduction on Alameda St, from Temple St to 1st St</li><li>• Pedestrian and bicycle access maintained</li></ul>



# Hashimoto Plaza Street Lights Improvements: Completed



Seven (7) new street lights were installed at Hashimoto Plaza and Azusa St through a partnership between Metro and the city of Los Angeles



# Stay Connected



213.922.1111



centrallaprojects@metro.net



metro.net/eastsideaccess





# Metro Center Project

# Meet the Team

## **Project Management**

- Albert Soliz
- Sangjun Lee (Jun)
- Sheida Roghani
- Aldon Bordenave

## **Amoroso: Contractor**

- Nathan Berkey

## **Community Relations**

- Olga Arroyo

## **Community Enrichment & Art Program**

- Mayen Alcantara
- Allison Porterfield



# Metro Center Project Overview and Purpose

- > The Metro Center Project is an essential and secured facility.
- > It supports the entire Metro Bus and Rail systems across 88 cities in LA County including expansions in Measure R and Measure M projects.
- > A 26,000-square-foot one-story building, slated to open in 2024.



Concept Rendering – Subject to Change

# Metro Center Project – Sustainability Highlights

- > For a building with over 100 personnel, only 53 parking spaces (including 10 with electric vehicle charging station) are provided on-site as Metro will provide shuttles for employees.
- > Drought tolerant and water efficient landscaping and use of ultra-low flow fixtures.
- > Low-impact development (LID) measures including an underground cistern for reuse of rainwater.



Concept Rendering – Subject to Change

# Recent Construction Photos



Center St: Civil improvements nearing completion



Center St: Temporary traffic lane reconfiguration to be removed June 3rd



# Schedule Look Ahead

Activity	Date	Location / What to Expect
Reconfigure traffic lanes and reopen sidewalk and bike lane	Anticipated to take place, Monday, June 3, 3am to 6am	<ul style="list-style-type: none"><li>• Temporary street closure for k-rail removal and restoration of traffic lanes</li><li>• Center St, from Ducommun St to Jackson St</li><li>• Detours: Commercial St, Vignes St, Temple St</li></ul>



# Stay Connected



213.922.1111



centrallaprojects@metro.net



metro.net/centerproject



# Next stop: improving rail service.

**DIVISION 20 PORTAL WIDENING AND TURNBACK FACILITY**

Construction Update



**Metro**

# Meet the Team

## **Project Management:**

- Albert Soliz

## **Community Relations:**

- Marlon Walker
- Ned Racine

## **Design-Builder:**

- Tutor Perini Corporation



# Project Overview

- Anticipated opening: 2026
- Improvements to Metro's Division 20 Rail Yard will provide faster and more frequent service on the Metro B and D Lines
- Improvements include
  - Widening of heavy rail portal
  - New turnback facility
  - Expansion, reconfiguration of rail storage tracks

## Division 20 Portal Widening & Turnback Facility



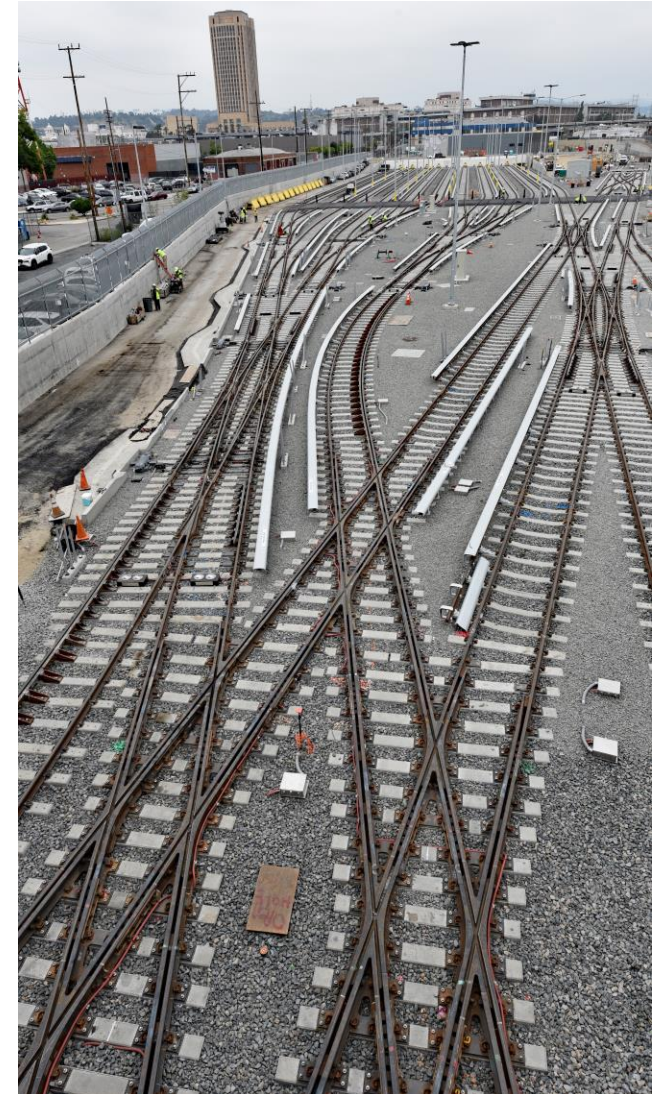
# Current Work: North Yard

Adding and moving utilities supports additional tracks for more rail car storage.

These utilities include:

- Fire water lines
- Lighting duct banks
- Main storm drain
- Retaining wall near Commercial Street

Looking north, North Yard rails now have contact rails and rail covers.



# Current Work: Portal Area

## Portal Widening

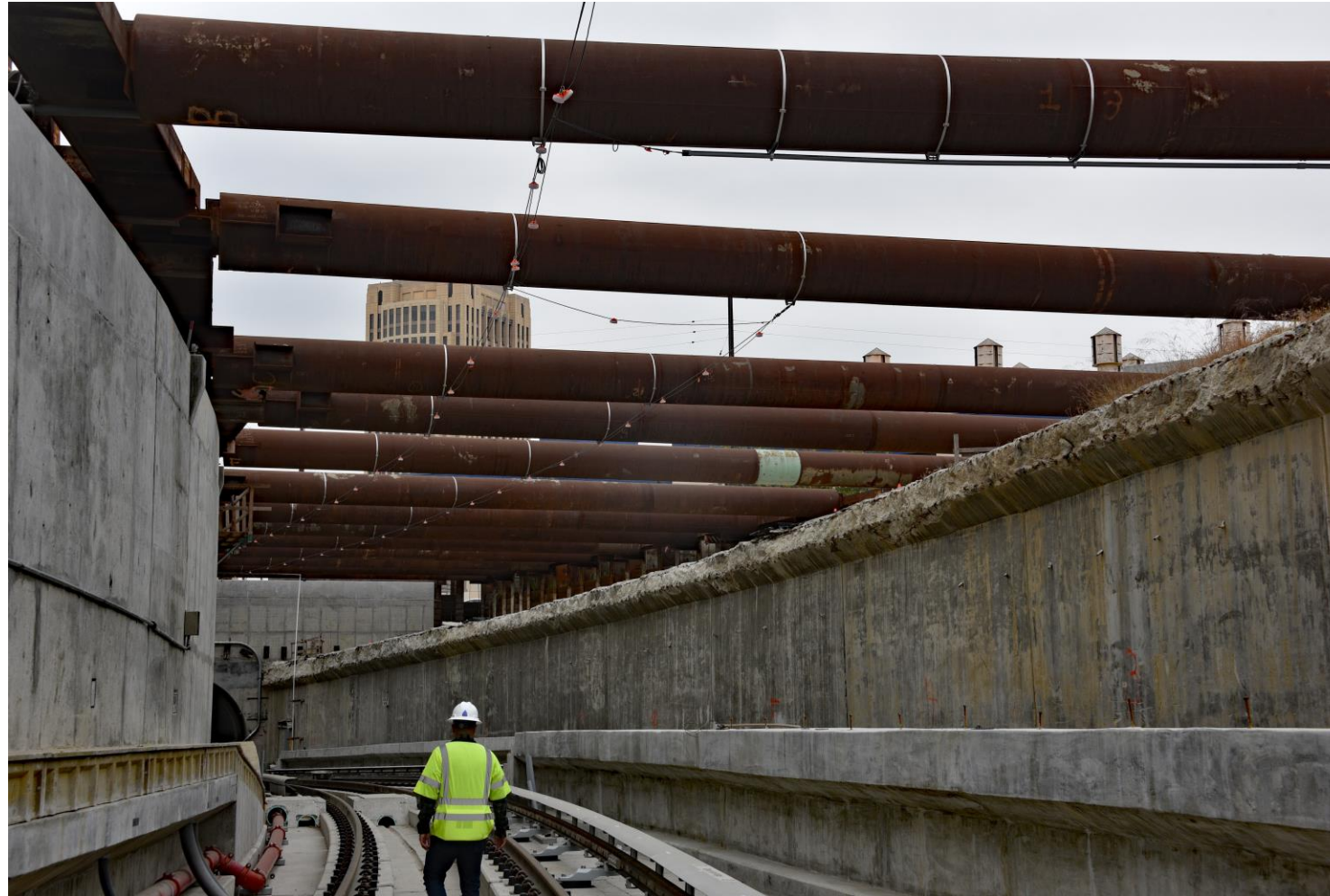
Once the portal is expanded from two to four tracks, the turnaround time for subway cars from the rail yard to Union Station will shrink.

The portal demolition began November 2022. When workers complete the western portal, they will switch to the east portal closer to Los Angeles River.



West portal nearing completion. Notice the contact rail cover.

# Current Work: Portal Area



Metro's Gateway headquarters building can be seen to the north. The steel supports above the worker will be removed.

# Current Work: Portal Area



Workers look for utilities, part of the early work for completing the east portal.

# Current Work: More Light for Rail Yard

Looking northeast, this photograph shows the new lighting standards erected in the north yard.



# Current Work: Preparing Rail

In the north yard, these stickers warn of the high voltage carried by the third rail or contact rail.



# Current Work: Preparing the South Yard

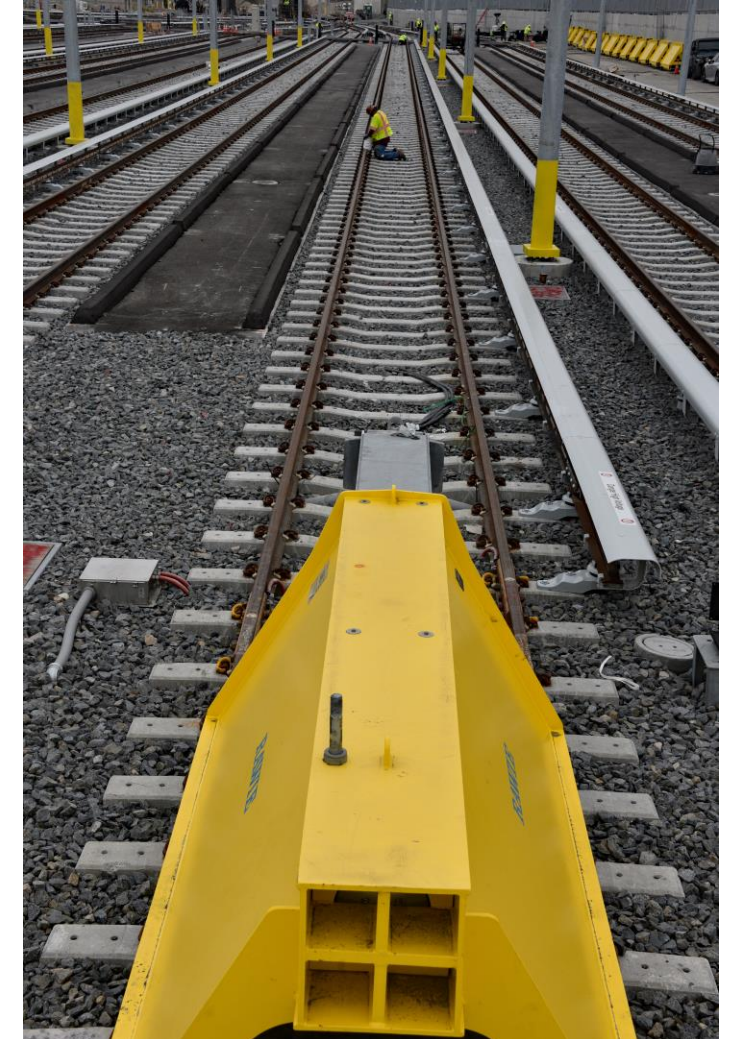
Storm drain segments wait to be connected and buried in the south yard.



# Upcoming Work

*\*Work is subject to change*

- > Demolish portal walls and tracks
- > Upgrade train communication systems
- > Complete portal foundation and walls
- > Install track and contact rails



While a worker attends to rail, the bumper pad waits for future trains.

# Construction Mitigations

## Best practices on the Division 20 construction site

- > Equipment and staging areas shall be located away from noise-sensitive receivers, and noise barriers should be used when possible.
- > Minimize use of high-impact devices such as jackhammers and hoe rams.
- > Utilize lower impact devices such as concrete crushers and pavement saws.
- > Refrain from idling equipment.
- > Use frequent watering to reduce dust.



Watering truck east of One Santa Fe reduces dust.



Workers monitor noise as excavation in the south yard continues.

# Stay Connected



213.922.6934



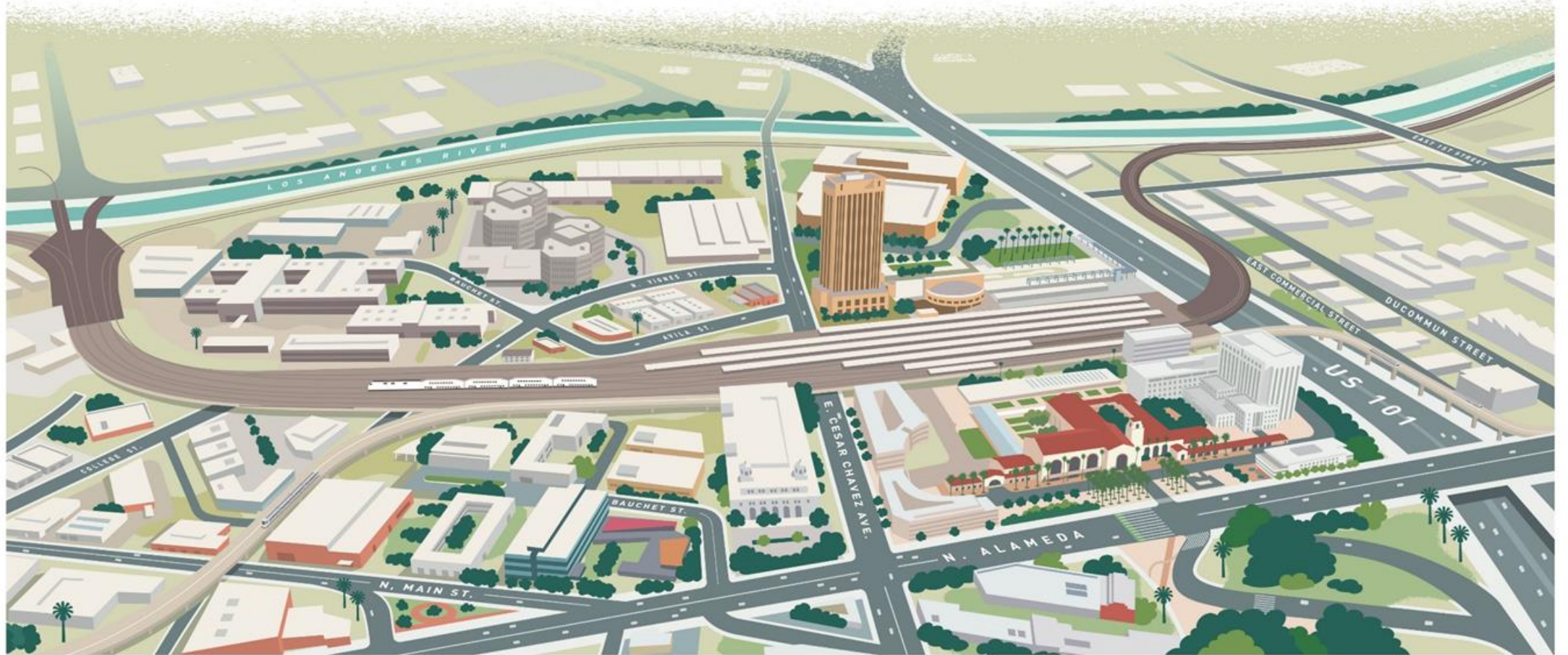
*div20portalwidening@metro.net*



metro.net/divison20

# Link US

## Central LA Region



# Meet the Metro Team

## Environmental Study Phase

### **Program Management**

Carlos Montez

### **Community Relations**

Danielle Valentino

## Design and Construction (Phase A)

### **Program Management**

Scott McConnell

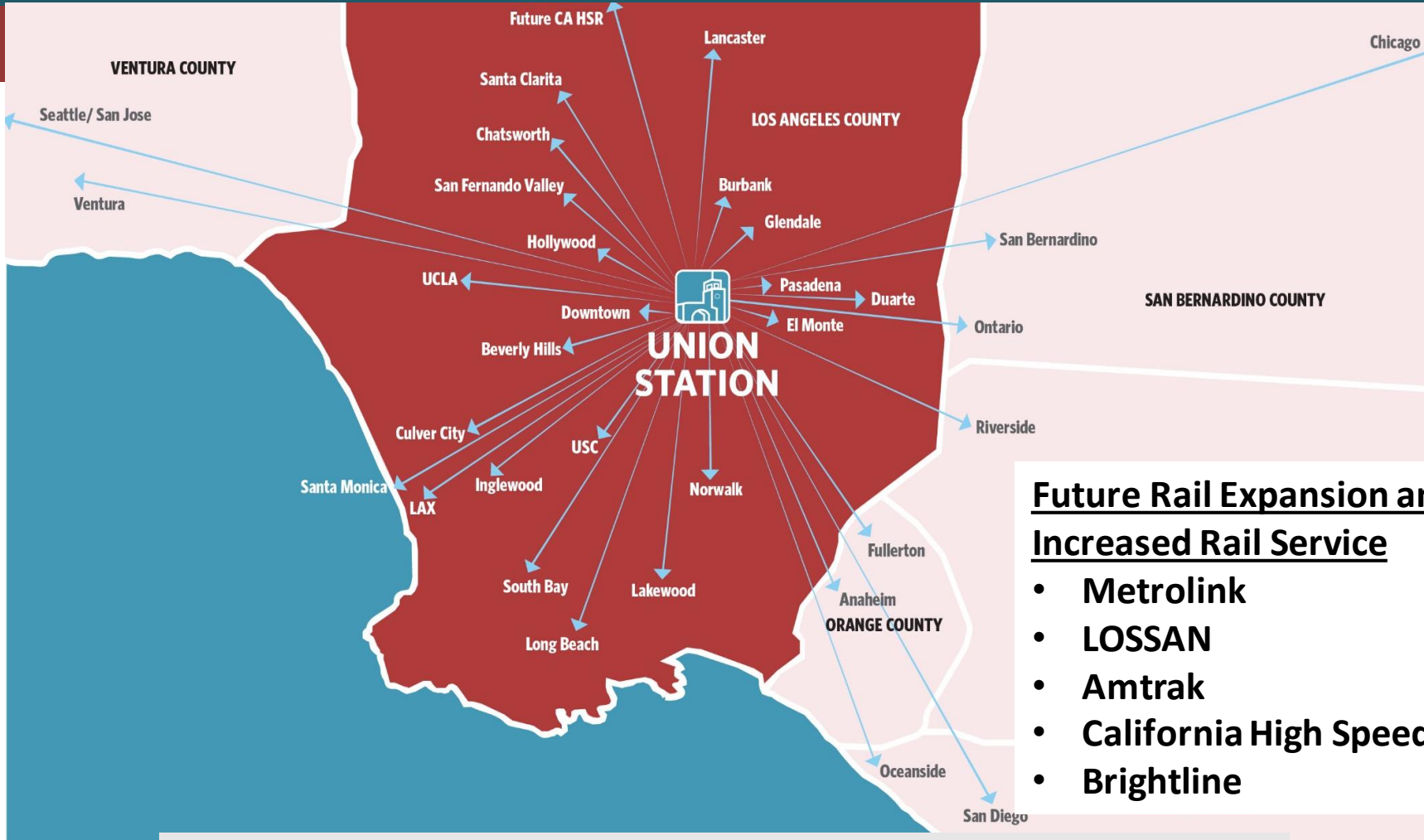
### **Construction Relations**

Olga Arroyo

### **Art & Design**

Mayen Alcantara

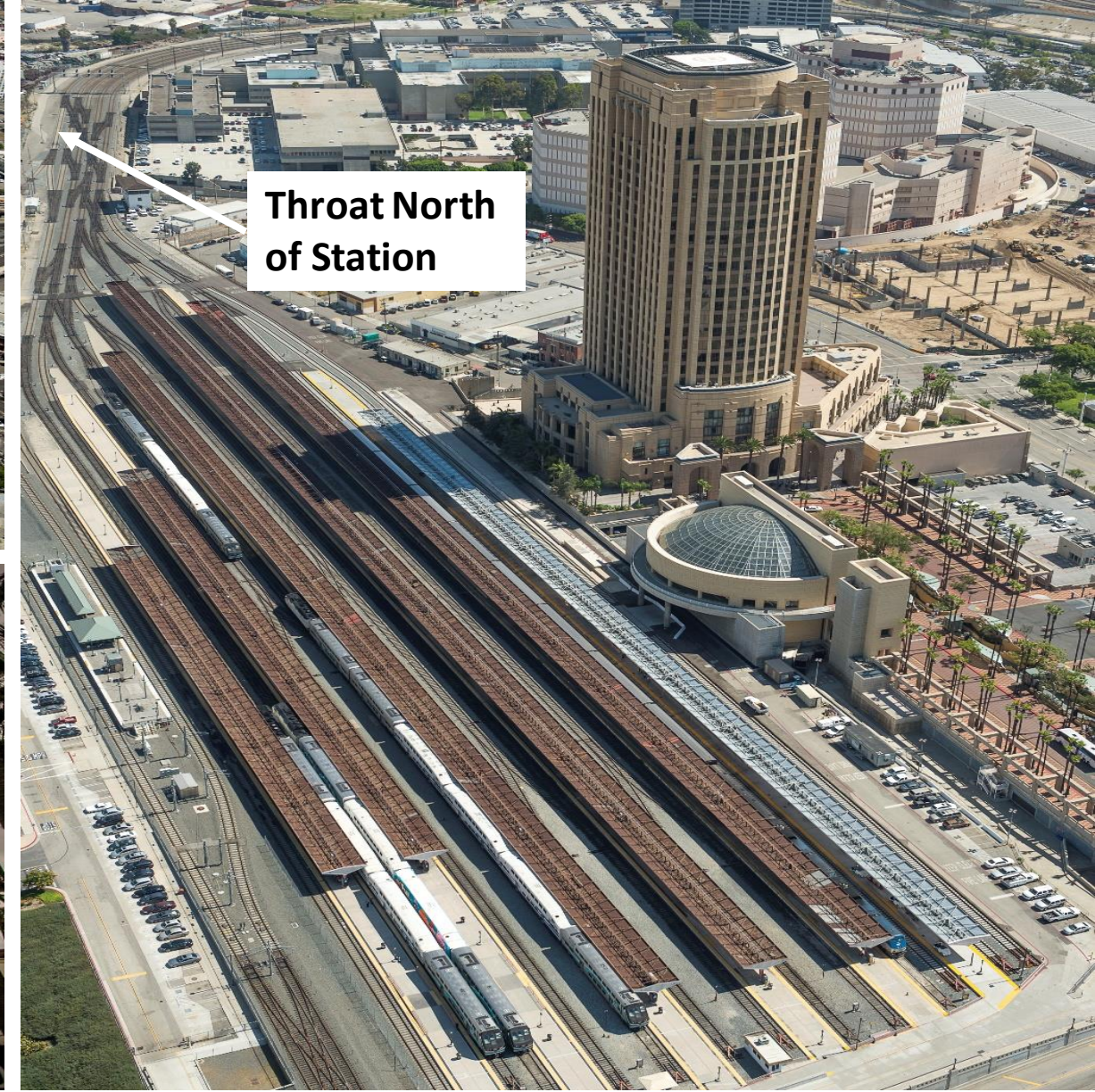
# Union Station and Future Rail Expansion



## Future Rail Expansion and Increased Rail Service

- Metrolink
- LOSSAN
- Amtrak
- California High Speed Rail
- Brightline

Los Angeles Union Station is the largest multi-modal hub in Southern California with commuter and intercity rail services across all six counties in SoCal and Amtrak rail service to Seattle, Chicago, New Orleans and beyond.

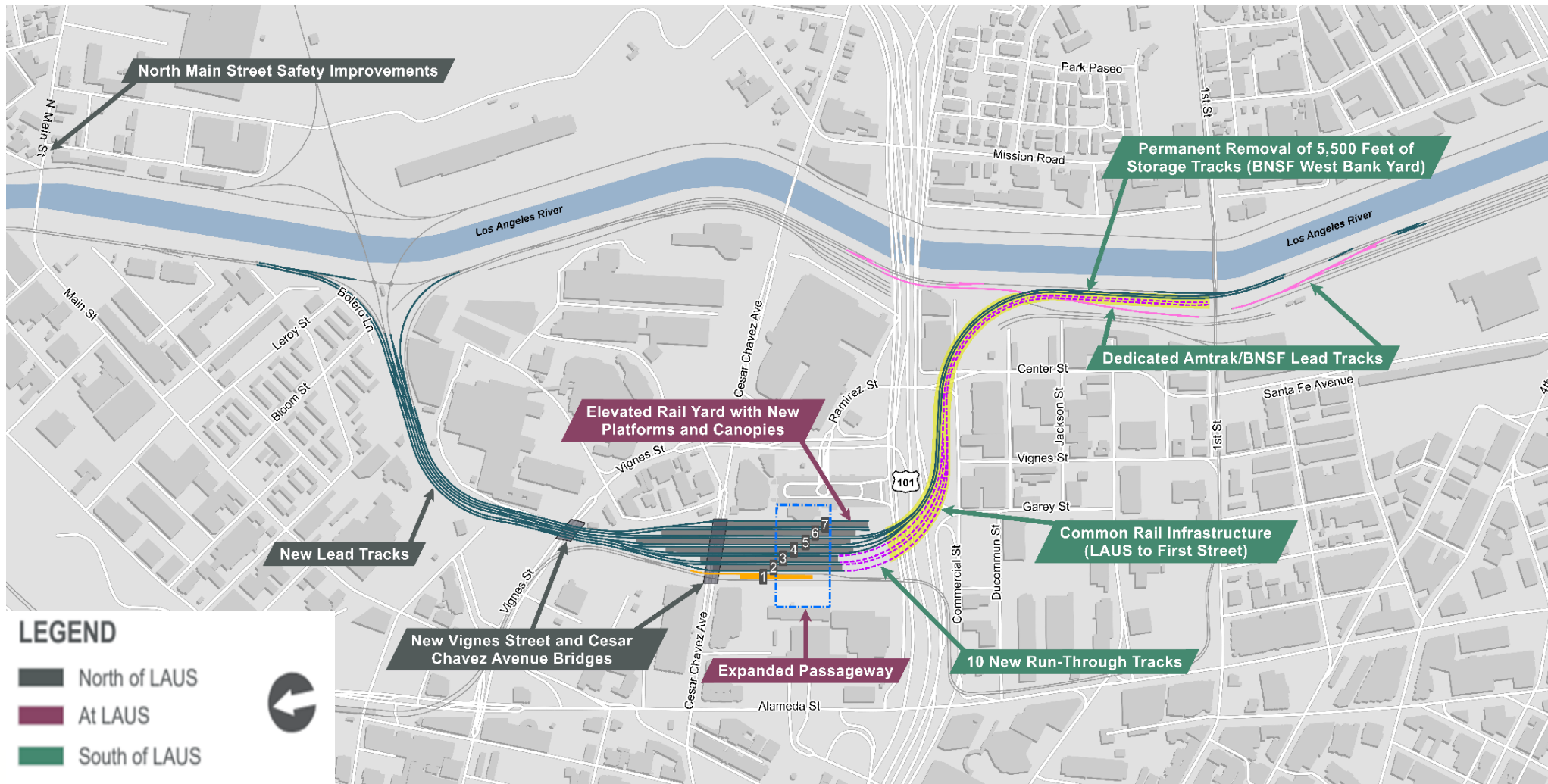


# Los Angeles Union Station Today

Built in 1939 | Union Station is a stub end station and has not been modernized since it was built

# Project Overview

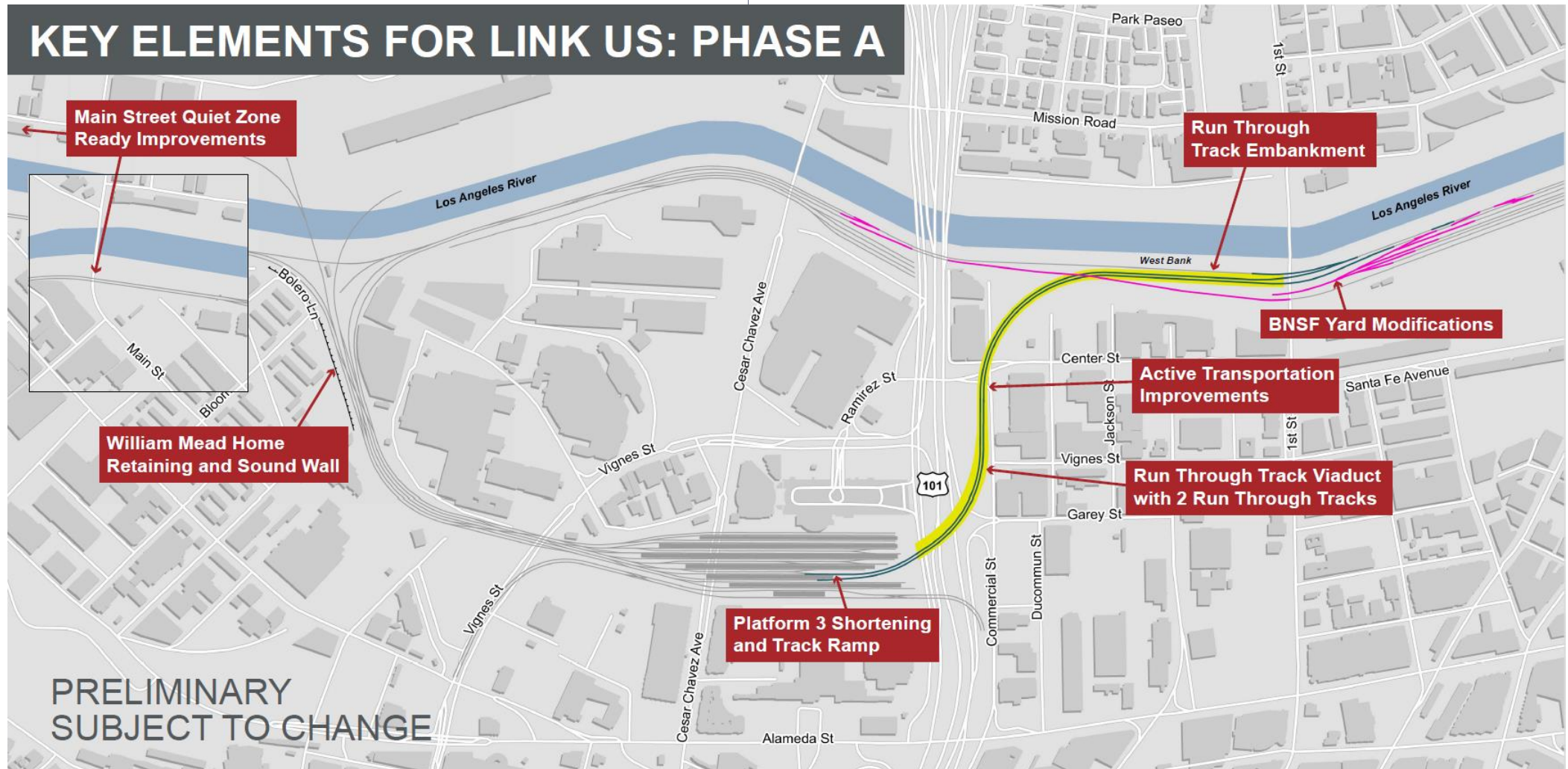
## Major Project Components – Build Alternative



# Link US – Phase A

## Construction Management General Contractor Project Delivery

### KEY ELEMENTS FOR LINK US: PHASE A



# Link US Project Full Buildout (Phases A and B)

## New Run Through Tracks and New Platforms



Metro

# Next Steps

## Repositories and Anticipated Document Availability

*45-Day Public Review Period: Spring/Summer 2024*

### Copies of Draft EIS/SEIR are available at these locations:

1. LA Central Public Library – Downtown
2. Lincoln Heights Branch Library
3. Chinatown Branch Library
4. Little Tokyo Branch Library
5. Benjamin Franklin Branch Library in Boyle Heights
6. LA Union Station/Metro Library
7. LAUS/Metro Records Management Center
8. William Mead Homes (WMH) Administrative Office
9. Care First Village Administrative Office
10. Vernon City Hall
11. Electronic copy on Metro Link US website

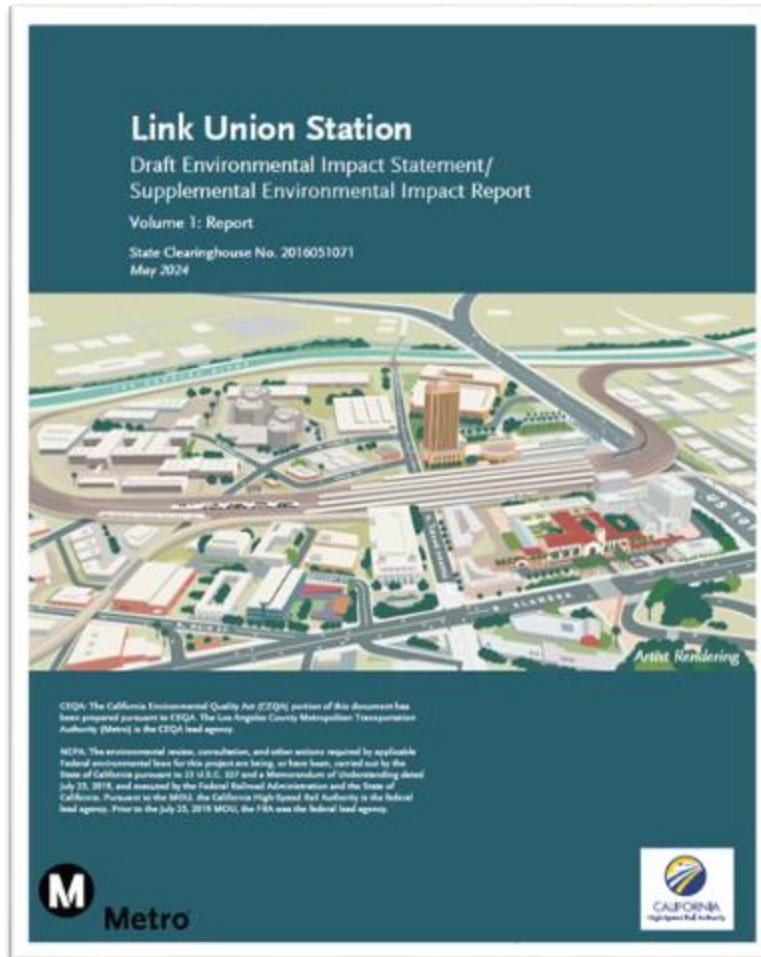
The Draft EIS/SEIR will be available for review at the WMH Administration Office and RAC office.

The Executive Summary will be available in English, Spanish, Korean, Japanese, Chinese, Khmer, and Vietnamese.

**Formal Comment Submittal via:**  
Email, mail, website, comment card, court reporter

# Next Steps

## Open House and Public Hearing



**Join us at the Open House  
and  
Public Hearing!**

**Spring/Summer 2024**

**Metro Headquarters**

**One Gateway Plaza, Board Room,  
3rd Floor, Los Angeles, CA 90012**

The Link US team will hold an open house and public hearing to explain the project and the Draft EIS/SEIR analysis.

# Link US – Near Term Activities

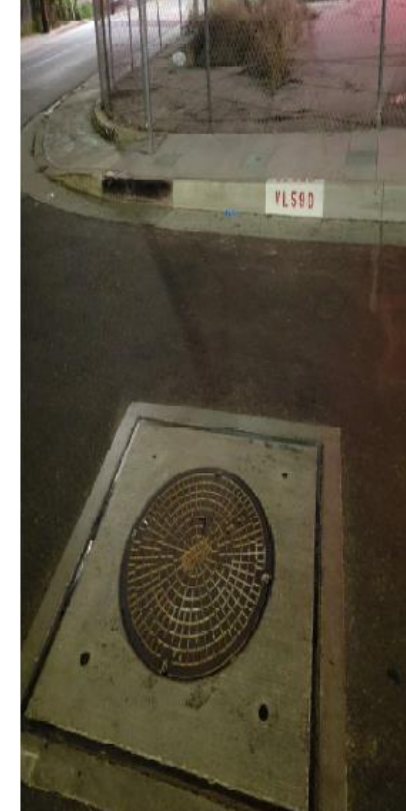
## Advanced Utility Relocations – 2024 Thru 2025



# Advanced Utility Work- Look Ahead Schedule

Activity	Duration   Work Hours   Location	Access
LADWP-Power adjustments and cable pulling	<ul style="list-style-type: none"><li>• February through October 2024</li><li>• Nights: 8pm – 5am</li><li>• Vignes St at Commercial St</li><li>• Commercial St between Vignes St and Center St</li><li>• Center St at Commercial St</li></ul>	<ul style="list-style-type: none"><li>• Directional lane closures</li><li>• Full closures at Vignes/Commercial and Commercial/Center intersections</li><li>• Local access, driveway and pedestrian access maintained</li><li>• Motorists will be detoured to Garey St and Ducommun St</li></ul>
Telecommunication services adjustments	<ul style="list-style-type: none"><li>• Anticipated beginning of July for approximately 2 months</li><li>• Nights: 8pm – 5am</li><li>• Vignes St at Commercial St</li><li>• Commercial St between Vignes St and Center St</li><li>• Center St at Commercial St</li></ul>	<ul style="list-style-type: none"><li>• Directional lane closures</li><li>• Full closures at Vignes/Commercial and Commercial/Center intersections</li><li>• Local access, driveway and pedestrian access maintained</li><li>• Motorists will be detoured to Garey St and Ducommun St</li></ul>

# Advanced Utility Relocations – 2024 Thru 2025



Completed the excavation, restored the street and placed new manholes

# Thank You – Stay Involved

## Link US Contact Information



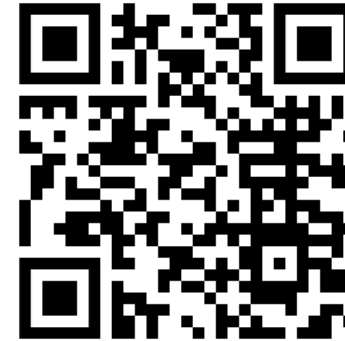
213.922.2524



*LinkUnionStation@metro.net*



*www.metro.net/linkus*



Scan the QR code to view the  
Link US Virtual Meeting Room!

**THANK YOU**

# Central Los Angeles Area Projects: Next Meeting

Our next meeting:

Wednesday, August 28, 2024, at 12pm, Virtual

Zoom: <https://us02web.zoom.us/j/91456407320>

Webinar ID: 914 5640 7320

- > Let us know your thoughts
- > [Survey](#)



213-922-1111



[centrallaprojects@metro.net](mailto:centrallaprojects@metro.net)

