

Welcome!

**Central Los Angeles Area
Projects Update Meeting
February 28, 2024**

Housekeeping

Today's meeting is being recorded.



Attendee cameras are turned off and microphones are muted.



During the meeting, questions and comments can be submitted using the Q&A icon.



For technical support, call or text 213.276.6008

Code of Conduct

Metro is committed to ensuring that all participants can fairly and clearly share ideas, comments and concerns about this project. To provide a safe and equitable process, we are asking for your help.

During this meeting, please:

1. Respect the format of the meeting and allow everyone an opportunity to comment
2. Treat fellow community members, agency representatives, Metro staff and others with respect



LIFE Program

- > The Low-Income Fare is Easy (LIFE) Program provides transportation assistance to low-income individuals in Los Angeles County.
- > The LIFE program offers 20 free rides a month or fare discounts that may be applied to any LIFE participating transit agency.
- > New LIFE Program participants get 90-day free rides
- > Learn more at metro.net/life.





Free transit for students with GoPass!

Students at participating K-12 schools and community colleges ride for free on Metro and other transit agencies.

To find out if your district is participating, contact your school or visit metro.net/gopass.



Metro

Metro Micro Fare Changes Start March 24

- > The Metro Board of Directors approved the Metro Micro Proposed Permanent Fare Program in January 2024
- > **Starting Sunday, March 24, 2024**, the following Metro Micro fare changes will be in effect:

Base Fare	\$2.50
Transfers to Metro Bus and Rail	Free
Transfers from Metro Bus and Rail	75¢ upcharge
LIFE Program free rides (90-day & 20/month)	Accepted on Micro as full fare
Senior/Disabled Fare Program Base Fare	\$1.00
GoPass & Student Reduced Fare Program Base Fare	\$1.00
E-Z Transit Pass Zone 0 Base Fare	75¢ upcharge
E-Z Transit Pass Zone 1+	Free
Transfers from Municipal Bus Lines	\$1.25 (50¢ transfer charge + 75¢ upcharge)

- Fare Capping will not be integrated into Metro Micro at this time.
- Passengers must use a TAP card for transfers as well as free and discounted fares. Passengers who pre-pay in the app with credit/ debit card will be charged the full base fare with no transfer.

- > For more information, visit micro.metro.net.



Let's Ride Safely Together

Keeping riders safe is our number one priority and we're committed to providing you with a great experience on Metro.

Visit [***metro.net/safety***](https://metro.net/safety) for more information about our plan that reimagines the way we approach public safety, to ensure all our riders feel safe, comfortable, and welcome on our system.



Transit Watch App

The LA Metro Transit Watch app puts you in touch with Metro Transit Security right away

Features:

- > Use the app to contact Metro Transit Security by text or phone call
- > Submit a report and upload a photo
- > Monitored 24/7 by Metro Security
- > Get push notifications with critical alerts from Metro
- > Spanish language support
- > Available on the App Store and Google Play Store



Welcome and Agenda

Thank you for joining us!

Central LA Area Team (Matthew Marquez)

Regional Connector Transit Project (Olga Arroyo)

Eastside Access Improvements Project (Olga Arroyo)

Metro Center Project (Olga Arroyo/Allison Porterfield)

Division 20 Portal Widening and Turnback Facility Project (Ned Racine)

Link US – Utility Relocation (Olga Arroyo)



Central Los Angeles Area Team

Centralized communications approach with the community

Core community relations team

Serve as a conduit of community priorities within Metro

Oversee outreach programs for Metro projects in planning, design and construction

Address community issues related to Metro bus and rail operations

Educate communities and riders on key Metro initiatives



Central Los Angeles Area Team

Construction Relations and Mitigation Programs Team

- Olga N. Arroyo, Community Relations Director
- Ned Racine, Principal Community Relations Officer

Local Government, Operations and Planning Projects Team

- Matthew Marquez, Community Relations Manager
- Elizabeth Andalon, Principal Community Relations Officer

New Media Team

- Ginny Brideau, Community Relations Senior Director
- Wendy Cardona, Community Relations Manager
- Robyn Lopez, Principal Community Relations Officer
- Rene Torres, Transportation Associate I



Central Los Angeles Area Projects

Project	Status/Project Completion
Regional Connector	Open for revenue service; street restoration continues
Eastside Access Improvements	Construction, 2024
Center St Project	Construction, 2024
Purple Line Extension, Section 1	Construction, 2025
Div. 20 Portal Widening & Turnback Facility	Construction, 2026
Link Union Station	Utility Adjustment and Federal Environmental Review Underway
LA Union Station Forecourt and Esplanade Project	Planning Completed (Construction funding needed)
I-110 Adams Terminus Improvement Project	Planning Completed (No Build Recommendation)
Los Angeles Aerial Rapid Transit	Planning (Environmental Review: Final EIR Certified and Project Approved)
Vermont Transit Corridor	Planning (Environmental Review)
K Line North Extension	Planning (Environmental Review)
LA River Path	Planning (Environmental Review)
Arts District/6th St Station	Planning (Environmental Review)
Alameda St Mobility Project	Early Planning



Central Los Angeles Area Communities

Downtown LA

Arts District, Bunker Hill, Chinatown, Civic Center, Echo Park, Elysian Park, Fashion District, Financial District, Historic Core, Industrial District, Little Tokyo, Skid Row, South Park

Central LA

Arlington Heights, Hancock Park, Harvard Heights, Koreatown, Larchmont, Mid-City, Mid-Wilshire, Pico-Union, Westlake

Eastside

Boyle Heights, El Sereno, Lincoln Heights

Northeast LA

Atwater Village, Cypress Park, Eagle Rock, Elysian Valley, Glassell Park, Highland Park, Montecito Heights, Mt. Washington, Monterey Hills

Hollywood

East Hollywood, Griffith Park, Hollywood, Hollywood Hills, Los Feliz, Silver Lake

Regional Connector Transit Project

Regional Connector

Remaining Activities

Regional Connector Project Team

Project Management:

- Mat Antonelli
- Tung Vu

Regional Connector Constructors:

- Ivan Yee
- Philip Mateo

Community Relations:

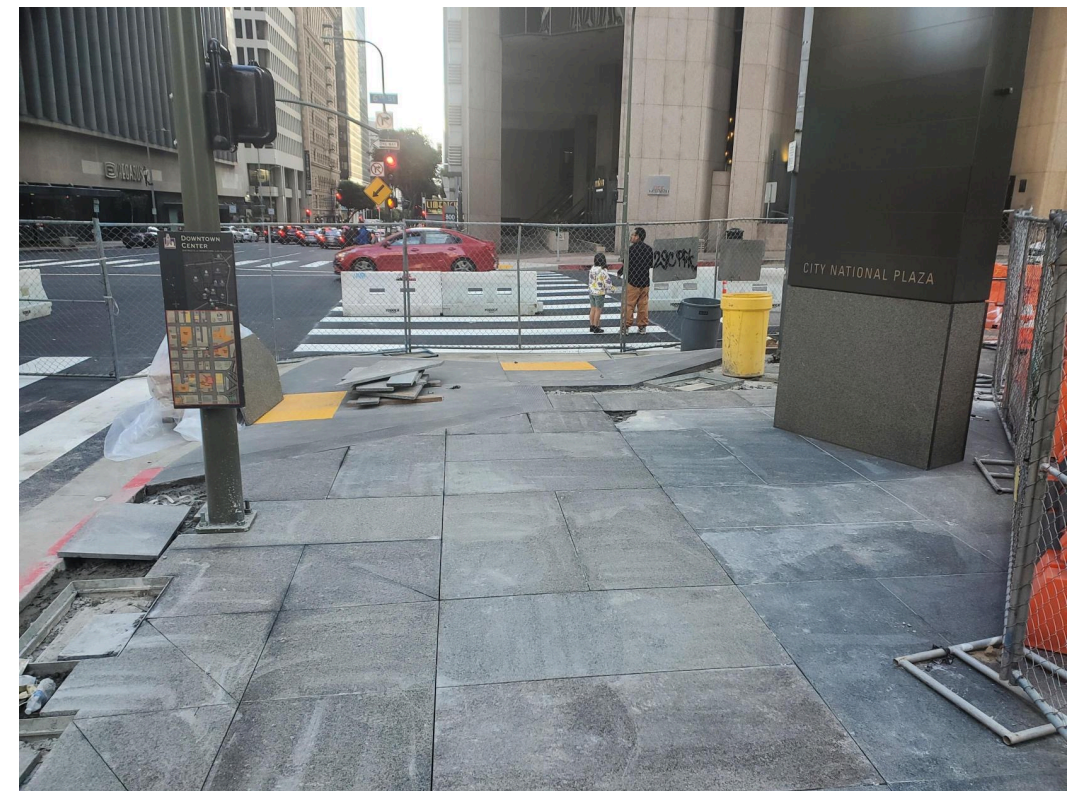
- Olga Arroyo

Completed: Flower St/6th St Street Restoration



Street Restoration Look Ahead Schedule

Activity	Little Tokyo/Arts District	Flower St/Financial District
<p>Street Restoration</p> <p>Sidewalk replacement, tree planting, etc.</p> <ul style="list-style-type: none"> Pending city approval 	<p>February/March</p> <p>Lane reduction on southbound Alameda St, 1st St to 2nd St</p> <p>Late February/early March, for 2 to 4 weeks</p> <p>Work hours: 9 am – 3:30 pm</p>	<p>Ongoing</p> <p>SB lane reduction on Flower St, from 5th St to 6th St</p> <p>Work hours: Monday – Friday; 7 am – 3:30 pm</p> <p>Lane reduction: In place around the clock</p>



Civil restoration work continues at 6th St/Flower St

Stay Connected



213-922-7277



regionalconnector@metro.net



metro.net/moreDTLA

Questions?



Project Team

Project Management:

- Kurt Turley
- John Mortl

Community Relations:

- Olga N. Arroyo



Project Overview

The Eastside Access Improvements implemented streetscape, pedestrian safety and bicycle access improvements within a ½ mile radius around the now open Metro Little Tokyo/Arts District Station at 1st/Central.



Walk/Bike Esplanade



Class II BikeLanes



Storm Parkways
(Biowales)



Street Trees



Street Light LED
Conversion



Wayfinding Signage



Crosswalk Installation



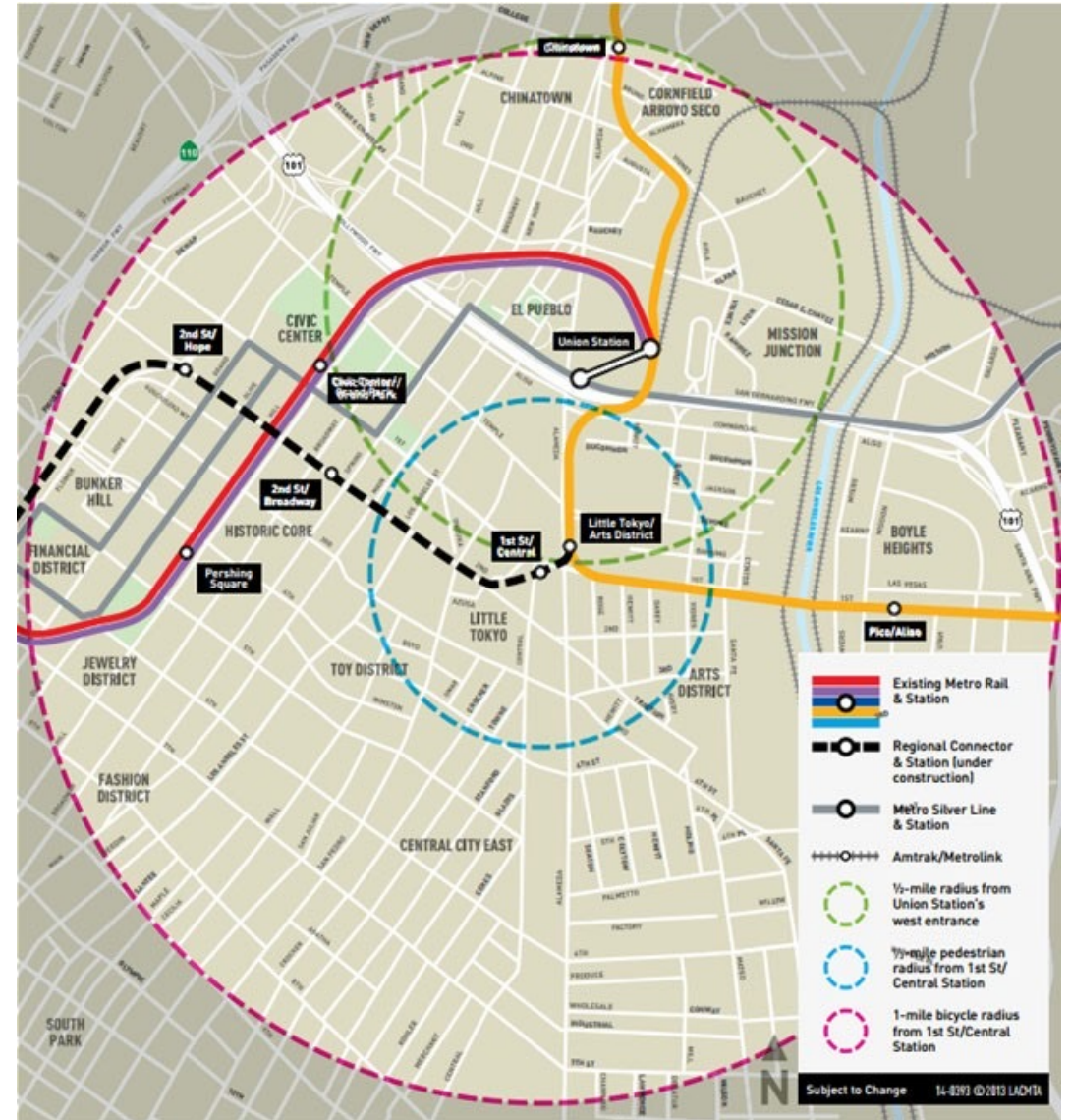
Decorative Crosswalk
Restoration



Street Furniture
Restoration



ADA CurbRamp
Installation



Activities – Look Ahead

Activities	Access
<p>Hashimoto Plaza/Azusa St lighting improvements:</p> <ul style="list-style-type: none">• Replace 5 Plaza streetlights• Add 2 streetlights on Azusa St	<p>Thru traffic will be maintained</p> <p>Weekdays, starting February 21 for 6 to 8 weeks, 9am to 2pm</p>
<p>Alameda Esplanade construction: Light pole replacement</p>	<p>Northbound lane reduction on Alameda St, from Temple St to 1st St</p> <p>Weekdays, March/April Work Hours: 7am to 3:30pm</p>



Building the foundation of one of the two new streetlights on Azusa St

Segment 2: Alameda Esplanade



Alameda St at 1st St, looking north

Stay Connected



213.922.1111



centrallaprojects@metro.net



metro.net/eastsideaccess





Metro Center Project

Meet the Team

Project Management

- Albert Soliz
- Sangjun Lee (Jun)
- Sheida Roghani
- Aldon Bordenave

Amoroso: Contractor

- Nathan Berkey

Community Relations

- Olga N. Arroyo

Community Enrichment & Art Program

- Mayen Alcantara
- Allison Porterfield



Metro Center Project Overview and Purpose

- > The Metro Center Project is an essential and secured facility.
- > It supports the entire Metro Bus and Rail systems across 88 cities in LA County including expansions in Measure R and Measure M projects.
- > A 26,000-square-foot one-story building, slated to open in 2024.



Concept Rendering – Subject to Change

Metro Center Project – Sustainability Highlights

- > For a building with over 200 personnel, only 53 parking spaces (including 10 with electric vehicle charging station) are provided on-site as Metro will provide shuttles for employees.
- > Drought tolerant and water efficient landscaping and use of ultra-low flow fixtures.
- > Low-impact development (LID) measures including an underground cistern for reuse of rainwater.



Concept Rendering – Subject to Change

Metro Center Project – Exterior Photo



- Installation of the artwork elements on Center and Jackson Street in February.
- Inspired by the cellular structure of the Methuselah tree, native to California and Nevada and which at 4,789 years old, is thought to be one of the oldest known living organisms in the world
- References to Metro's bus and light rail network are incorporated in the artwork design

Metro Center Project Building Artwork



Metro Center Project Building Artwork



- The artist, Jacob Hashimoto, was selected via a process that included expert advisors rooted in the neighboring communities including the Arts District.
- Jacob Hashimoto's internationally recognized artwork is included in public and private collections including the LA County Museum of Art (LACMA).
- Meet the artist and community workshops occurred at the LA Kretz Innovation Campus in 2017.

The artist, Jacob Hashimoto.
Photo by Derek Zeitel



Recent Construction Photos

Feb 27, 2024 at 9:38:39 AM
Metro Center Street Project
410 Center Street, Los Angeles, Ca.



**Northwest corner of building
(view looking southeast)**

Feb 27, 2024 at 9:15:45 AM
Metro Center Street Project
410 Center Street, Los Angeles, Ca.



**Southwest elevation of building
(view looking northeast)**



Schedule Look Ahead

Activity	Date	Access
Street curb repairs and new sidewalk	Ongoing through Q2 2024	<ul style="list-style-type: none">• Northbound bike lane and eastern sidewalk continues to be closed on Center St, from Ducommun St to Jackson St



Stay Connected



213.922.1111



centrallaprojects@metro.net



metro.net/centerproject



Next stop: improving rail service.

DIVISION 20 PORTAL WIDENING AND TURNBACK FACILITY

Construction Update



Metro

Meet the Team

Project Management:

- James Cohen

Community Relations:

- Marlon Walker
- Ned Racine

Design-Builder:

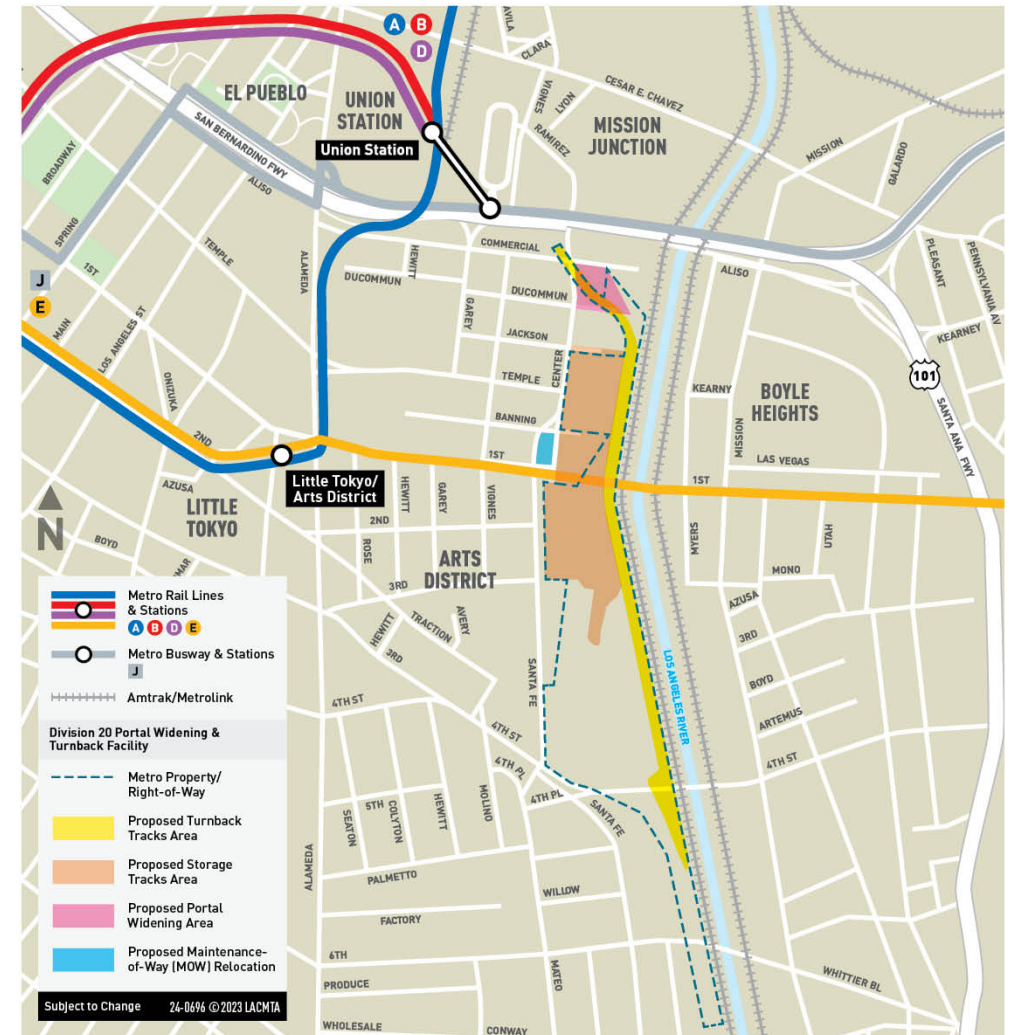
- Skanska-Traylor-Shea



Project Overview

- > Anticipated opening: 2026
- > Improvements to Metro's Division 20 Rail Yard will provide faster and more frequent service on the Metro B and D Lines
- > Improvements include
 - Widening of heavy rail portal
 - New turnback facility
 - Expansion, reconfiguration of rail storage tracks

Division 20 Portal Widening & Turnback Facility



Exact location of turnback tracks and storage tracks to be determined.

Current Work: North Yard

Adding and moving utilities supports additional tracks for more rail car storage.

These utilities include:

- Fire water lines
- Lighting duct banks
- Main storm drain
- Retaining wall near Commercial Street

Ladder tracks move rail cars from main tracks to side tracks.



Current Work: Portal Area

Portal Widening

Once the portal is expanded from two to four tracks, the turnaround time for subway cars from the rail yard to Union Station will shrink.

The portal demolition began November 2022. When workers complete the western portal, they will switch to the east portal closer to Los Angeles River.

Wider west portal curving northwest toward Commercial Street and east side of Union Station.



Current Work: Portal Area



The ragged wall to the right will be demolished once workers have completed the west portal. Again, the goal is to move trains quicker.

Current Work: Rails

Under 1st Street Bridge multiple rails come together to merge or change direction. This stretch of rail is called exasperation junction.



Current Work: Preparing Rail

These rails sit close to the same type of train cars they will move and store.



Current Work: Preparing the South Yard

Many parts of the South Yard need leveling, as well as drains and utilities added. Once that work is completed the South Yard will be used to store rail cars.



Upcoming Work

**Work is subject to change*

- Demolish portal walls and tracks
- Upgrade train communication systems
- Complete portal foundation and walls
- Install track and contact rails

Worker checks newly installed conduits south of 1st Street Bridge.



Construction Mitigations

Best practices on the Division 20 construction site

- Equipment and staging areas shall be located away from noise-sensitive receivers, and noise barriers should be used when possible.
- Minimize use of high-impact devices such as jackhammers and hoe rams.
- Utilize lower impact devices such as concrete crushers and pavement saws.
- Refrain from idling equipment.
- Use frequent watering to reduce dust.



Watering truck east of One Santa Fe reduces dust.



Workers monitor noise as excavation in the south yard continues.

Stay Connected



213.922.6934



div20portalwidening@metro.net



metro.net/divison20

Link US

Central LA Region



Meet the Metro Team

Environmental Study Phase

Program Management

Carlos Montez

Community Relations

Danielle Valentino

Design and Construction (Phase A)

Program Management

Scott McConnell

Construction Relations

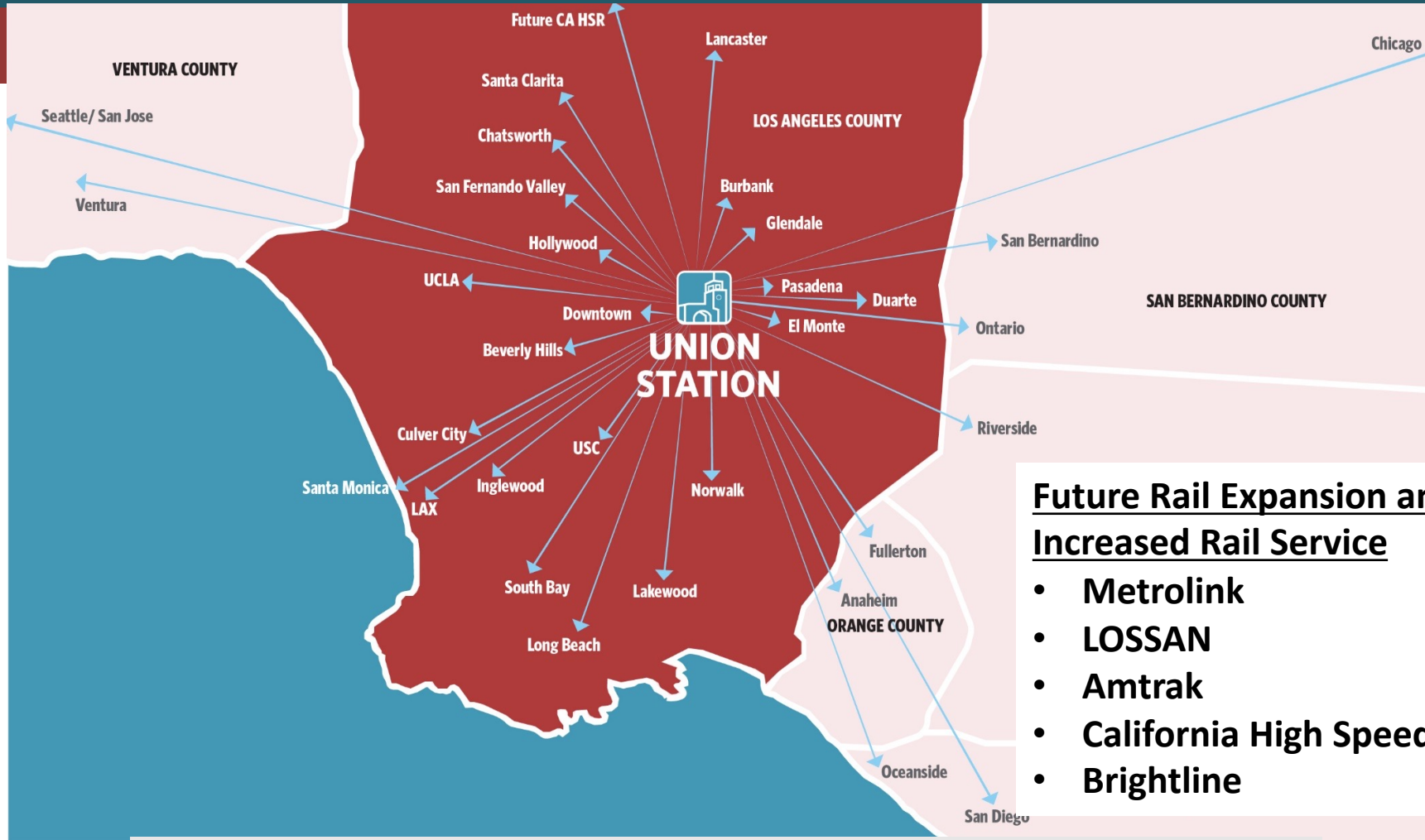
Olga N. Arroyo

Art & Design

Mayen Alcantara



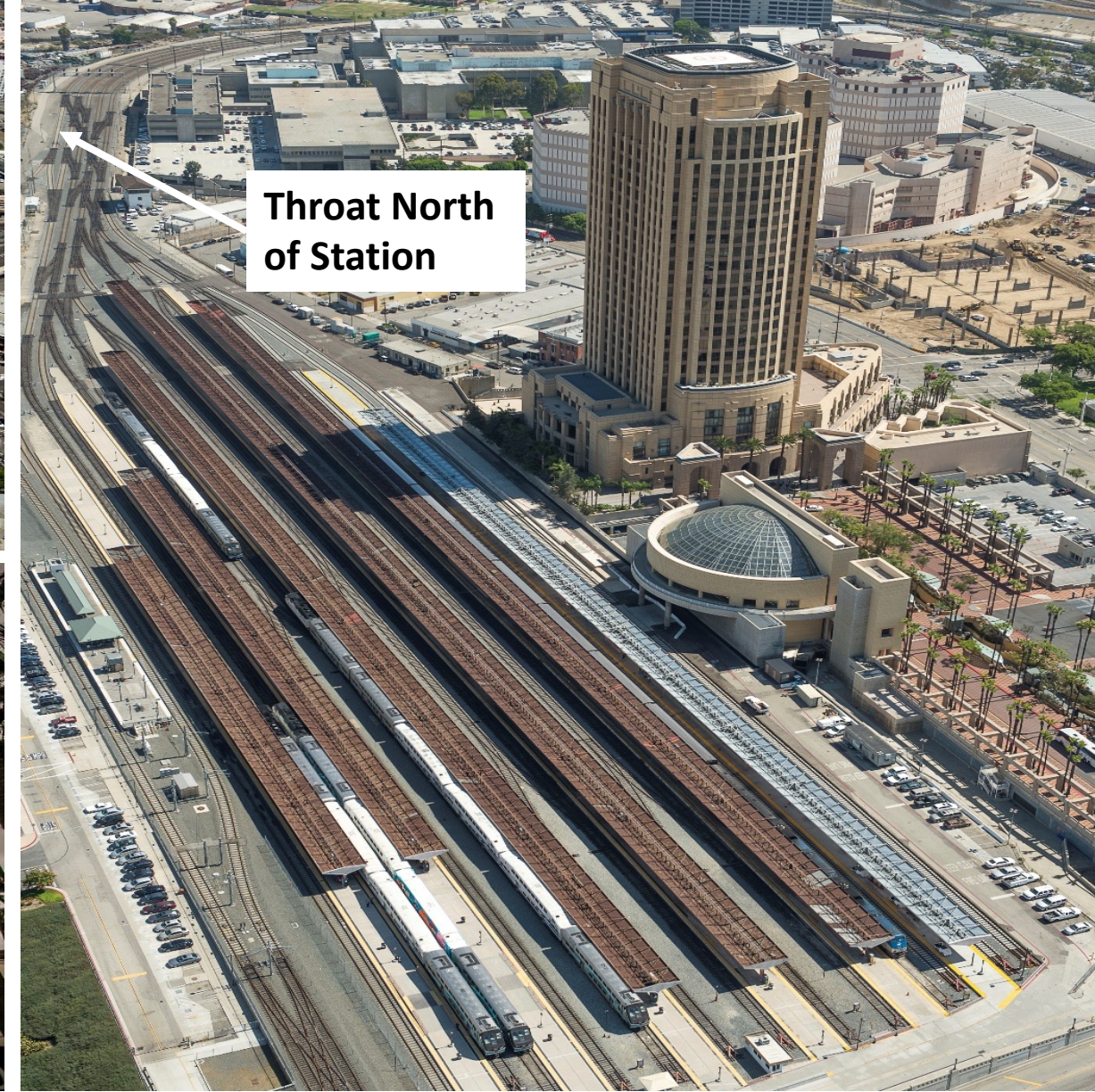
Union Station and Future Rail Expansion



Future Rail Expansion and Increased Rail Service

- Metrolink
- LOSSAN
- Amtrak
- California High Speed Rail
- Brightline

Los Angeles Union Station is the largest multi-modal hub in Southern California with commuter and intercity rail services across all six counties in SoCal and Amtrak rail service to Seattle, Chicago, New Orleans and beyond.

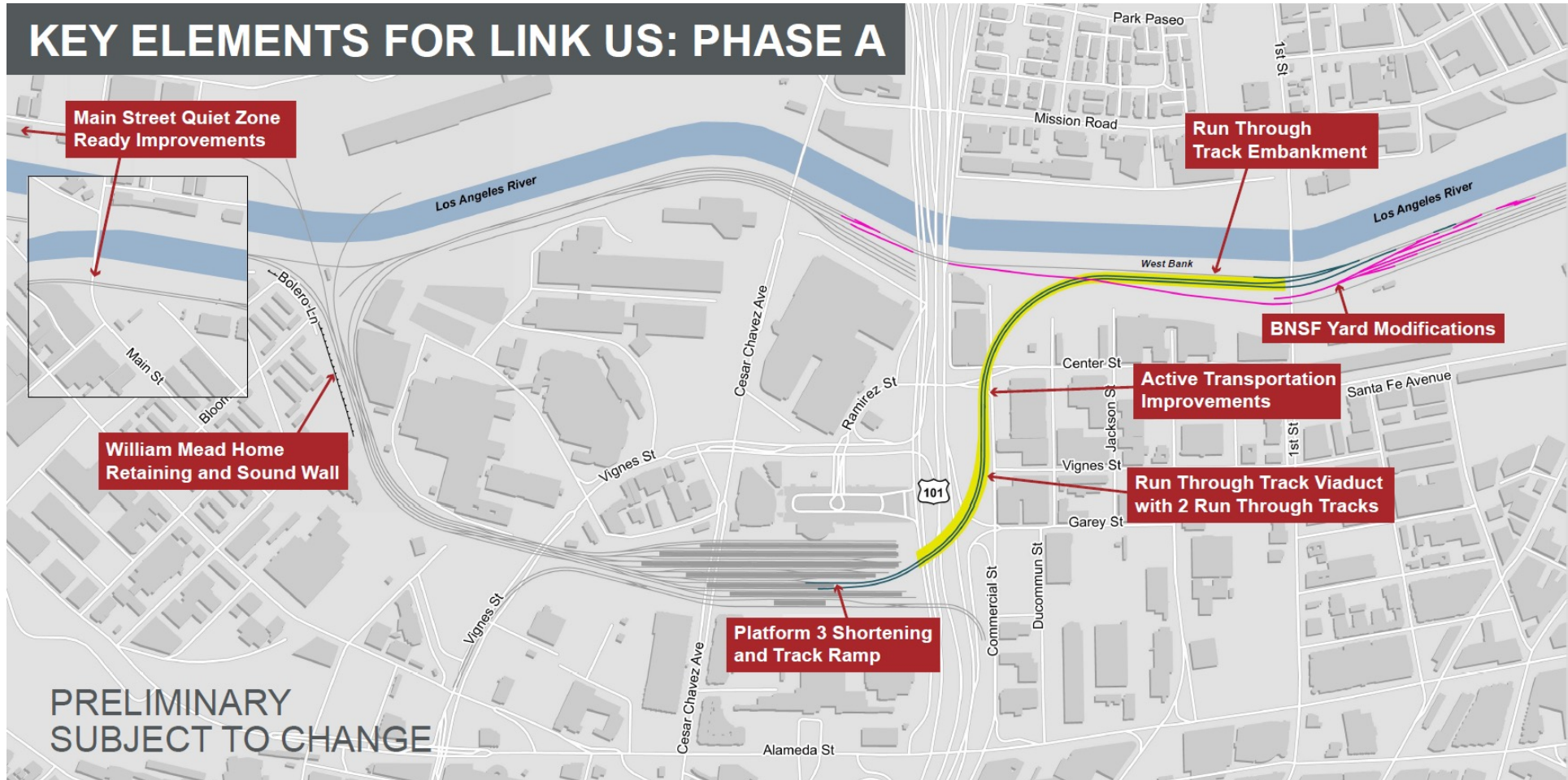


Los Angeles Union Station Today

Built in 1939 | Union Station is a stub end station and has not been modernized since it was built

Link US – Phase A

CMGC Project Delivery



Link US Project Full Buildout (Phases A and B)

New Run Through Tracks and New Platforms



Link US – Near Term Activities

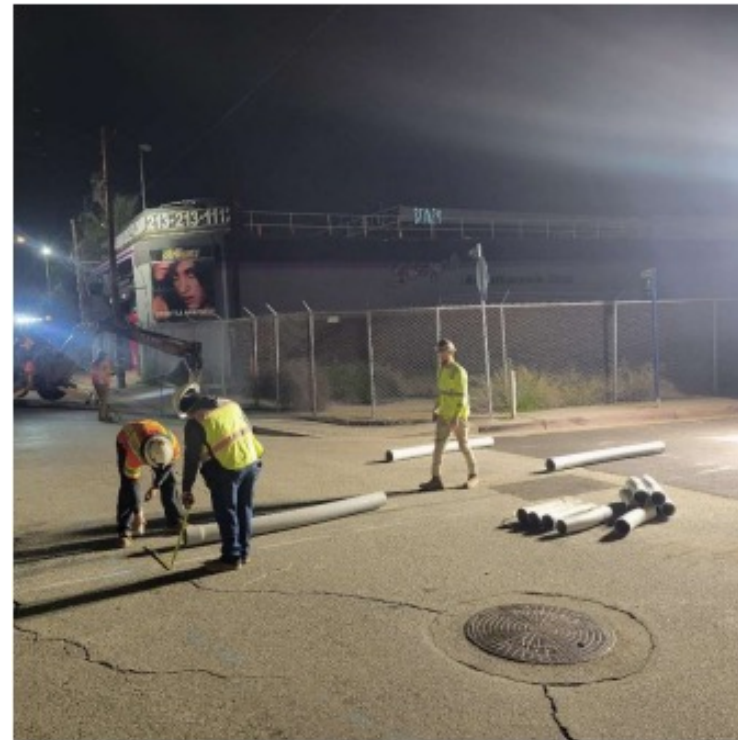
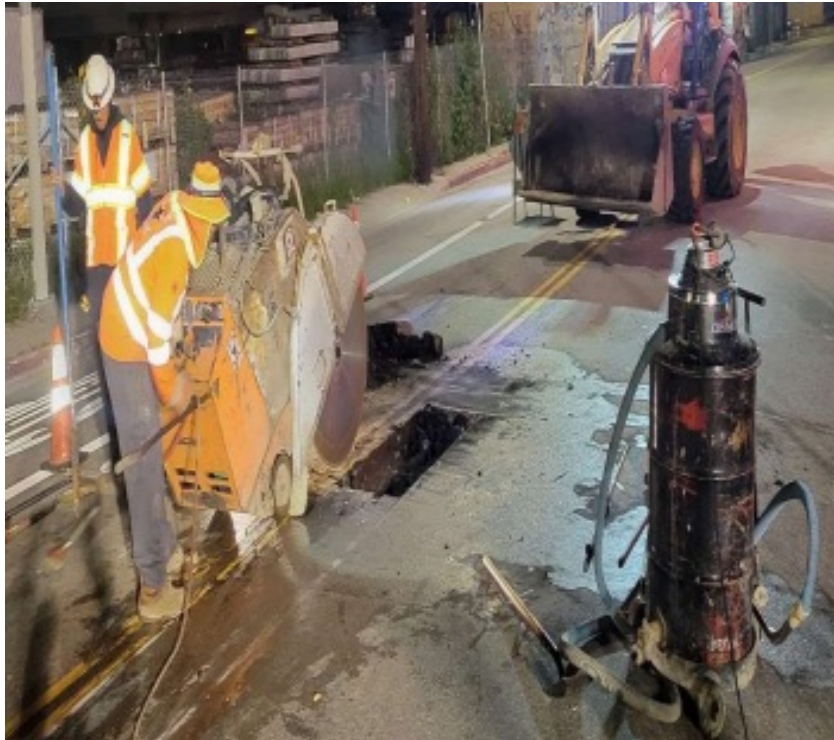
Advanced Utility Relocations – 2024 Thru 2025



Construction Look Ahead Schedule

Activity	Duration Work Hours Location	Access
LADWP-Power adjustments	February through October 2024 Nights: 8pm – 5am <ul style="list-style-type: none">Vignes St at Commercial StCommercial St between Vignes St and Center StCenter St at Commercial St	<ul style="list-style-type: none">Directional lane closuresFull closures at Vignes/Commercial and Commercial/Center intersectionsLocal access, driveway and pedestrian access maintainedMotorists will be detoured to Garey St and Ducommun St

Advanced Utility Relocations – 2024 Thru 2025



Thank you!



THANK YOU

Central Los Angeles Area Projects: Next Meeting

Our next meeting:

Wednesday, May 29, 2024, at 12pm, Virtual

Zoom: <https://us02web.zoom.us/j/91456407320>

Webinar ID: 914 5640 7320

- > Let us know your thoughts
- > [Survey](#)



213-922-1111



centrallaprojects@metro.net

