



We're building light rail for the Valley.

EAST SAN FERNANDO VALLEY LIGHT RAIL TRANSIT

October 25 & November 2, 2023
Construction Open House





Interpretación en español

Via Zoom

- Haga click en el icono – “interpretación”
- Escoja la opción para escuchar en español

Via Zoom

- Click on the “Interpretation” icon
- Pick the language you would like to listen to (Spanish)

Housekeeping



This is a webinar. Attendee cameras are off, and microphones are muted.

Este es un seminario web. Las cámaras de los asistentes están apagadas y los micrófonos silenciados.



Submit your questions by using the Q&A feature

Envíe sus preguntas utilizando la función de preguntas y respuestas



This meeting is being recorded. Video file will be posted on our website at metro.net/eastsfv

Esta reunión se está grabada. El archivo de video se publicará en nuestro sitio web en metro.net/eastsfv

Code of Conduct

Metro is committed to ensuring that all participants can fairly and clearly share ideas, comments and concerns about this project. To provide a safe and equitable process, we are asking for your help.

During this meeting, please:

- Respect the format of the meeting and allow everyone an opportunity to comment
- Treat fellow community members, agency representatives, Metro staff and others with respect
- Address all comments to Metro staff and consultants – not to other attendees





Free transit for students with GoPass!

Students at participating K-12 schools and community colleges ride for free on Metro and other transit agencies.

To find out if your district is participating, contact your school or visit metro.net/gopass.



Metro

We are in this together



Thank you for joining us!

Agenda

Welcome and Introductions

Ginny Brideau, Senior Director, Community Relations

Project Overview

Greg Gastelum, Senior Executive Officer

Construction Update

Nell Mardirosian, Senior Director, Third Party

Real Estate Acquisition

Darryl Root, Director, Real Property Management and Development

Community Outreach Update

Ron Macias, Principal Community Relations Officer

Community Leadership Council
Eat Shop Play

Jesse Leon, Community Leadership Council (CLC) Manager

Business Solution Center,
Business Interruption Fund

Jessica Spearman, Principal Transportation Planner, Business Interruption Fund and Business Solution Center

Q & A

Ginny Brideau, Senior Director, Community Relations



Transforming the Corridor



Enhancing Transit Service and Accessibility to the San Fernando Valley

- Improving transit connections and access between the neighborhoods of **Van Nuys, Panorama City, Arleta, and Pacoima**
- Providing direct access to Metrolink/Amtrak and G-line stations, promoting local and regional travel options
- Maintaining access at key intersecting arterials and integration of future transit projects planned for the region
- Daily Projected Transit Trips (Boardings) Yr. 2035: 37,759

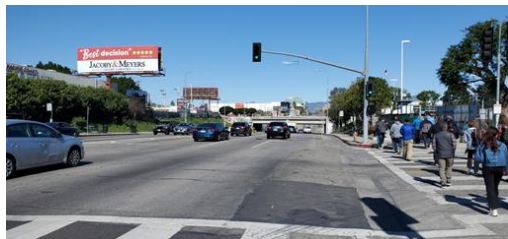
ESFV LRT Project Overview



December 2020: Metro Board certified Final Environmental Impact Report

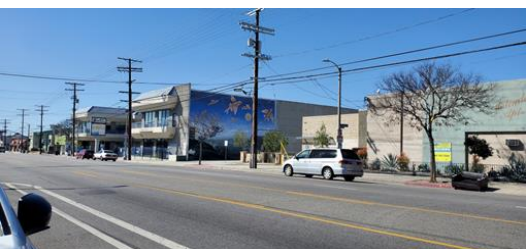
January 2021: Record of Decision signed by the Federal Transit Administration

- Northern Segment
- Southern Segment



Late 2023:

- California Environmental Quality Act – Approval for Environmental Impact Report Addendum
- National Environmental Policy Act - Reevaluation approval



ESFV Northern Segment



- Following the certification of the ESFV LRT Project Final EIS/EIR, the Metro Board directed staff to prepare a Supplemental Analysis (*ESFV Shared ROW Study*) for the Northern Segment
- The ESFV Shared ROW Study is currently underway in and includes grade crossing analysis and conceptual design for up to three scenarios not studied in the Final EIS/EIR
- Study completion is anticipated by mid-2024

ESFV Southern Segment

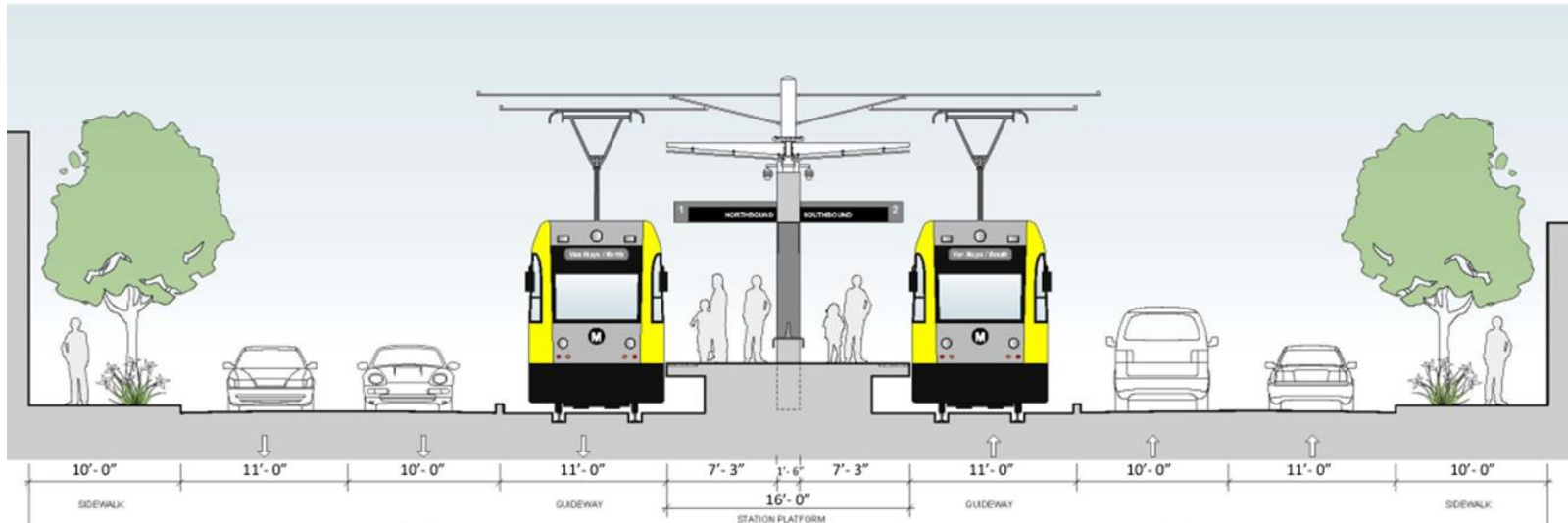


East San Fernando Valley Light Rail Transit Project

- 6.7-mile at-grade double-track light rail transit system
- 11 center-platform stations
- 10 Traction Power Substations (TPSS)
- Procurement of 34 Light Rail Vehicles
- Maintenance and Storage Facility
- Communication line to and expansion of Rail Operations Center

ESFV Southern Segment

- Operate in Semi-Exclusive Right of Way in the median of Van Nuys Bl
- Powered by electrified Overhead Contact System
- Removal of street parking along Van Nuys Bl and relocation of bike lanes
- Street improvements



Concept Image. Typical ESFV street running section with station

ESFV Southern Segment

- Standard Metro station design with unique artworks.
- Underground electrical, mechanical, and systems rooms for certain stations.
- Pedestrian access provided at both ends of each platform station.
- Station amenities include canopies, lighting, benches, ticket vending machines, variable message signs, route maps, safety and security equipment, and fare gate system.



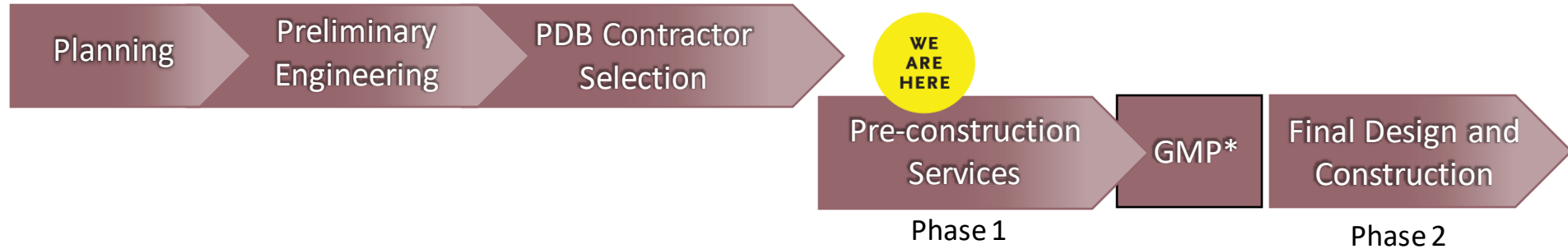
Concept Image. Metro standard station

Maintenance and Storage Facility (MSF)

- 21 acres located near Keswick Street
- Storage designed for initial fleet with option to expand
- All types of maintenance, including car wash, paint shop, wheel truing, material storage, cleaning platform, and main shop



Progressive Design Build Contractor (PDB)

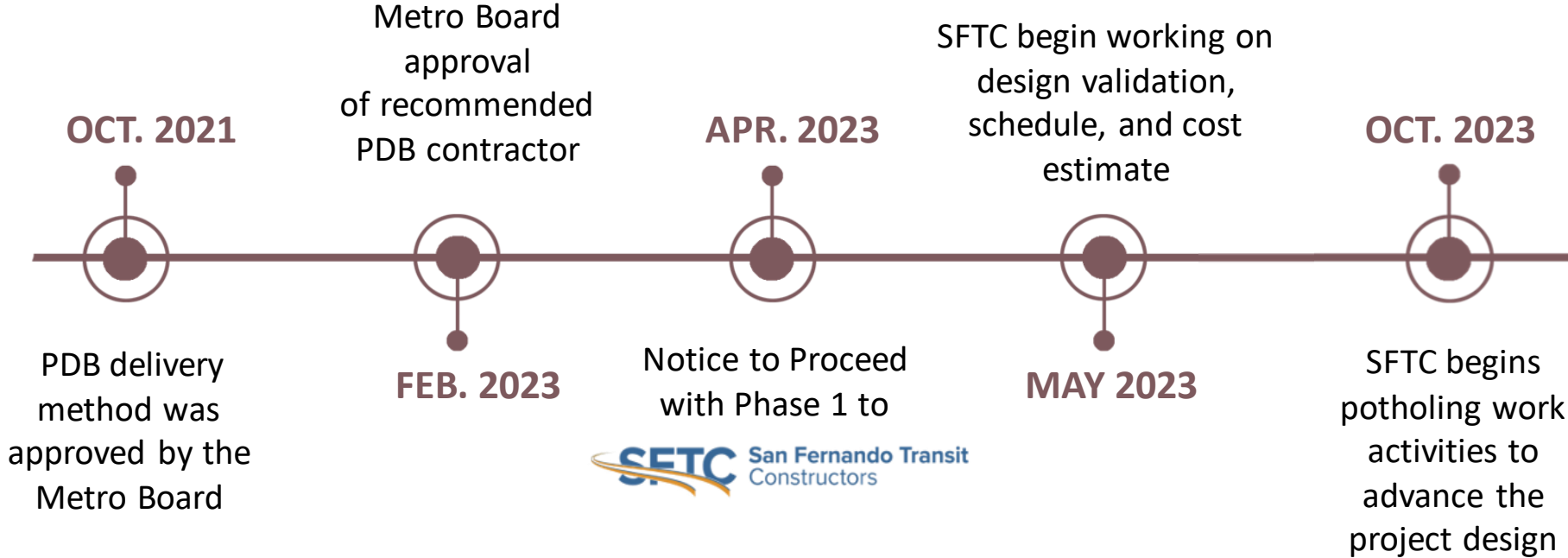


- PDB delivery method is a collaborative process between Metro, PDB (contractor and designer), and Third Parties (City of LA, DWP, County, etc.)
- PDB delivery method brings the contractor and their designer into the project early to allow for discussion of innovative and value engineering ideas
- Once Metro and the PDB reach an agreement on scope and cost, they will work with Metro and Third Parties to advance the design further and then proceed with major construction



*Guaranteed Maximum Price

Progressive Design Build Contractor (PDB)



Project Labor Agreement (PLA)/ Construction Careers Policy (CCP) Goals



Metro's PLA/CCP Contractor Hiring Goals:

- 40%** Local Targeted Worker
- 20%** Apprentice
- 10%** Disadvantaged Worker

*Contractors will be encouraged to meet EO11246 which includes a 6.9% female participation rate

Metro's PLA/CCP shall be applicable on the following ESFV construction contracts:

- ESFV Advanced Utility Adjustments
- ESFV Progressive Design Build – Phase 2 (construction phase)
- ESFV Line MSF & ESS P3 Solar Project – Phase 2 (construction phase)



Southern Segment: Victory Station



Concept Image. Metro Standard Station.

Southern Segment: Victory Station



Metro KLine Hyde Park Station

Southern Segment: Arleta Station



Concept Image. Metro Standard Station.

Southern Segment: Traction Power Substation



Metro K Line TPSS in Park Mesa Heights

Southern Segment: Anticipated Project Schedule



Continuation of preconstruction activities

Utility Investigations, Geotechnical and Hazardous Material Field Work, Real Estate Activities and UA designs

Construction Management Support Services Contract to AMM

Notice to Proceed in November

Advanced Utility Adjustments Contract to W.A. Rasic Construction Co.

Notice to Proceed in December

MSF Solar P3 Contract to PCS Energy

Oversight of MSF solar panel design, build and oversight of maintenance.
Notice to Proceed in December

WE ARE HERE

2023 to Completion

Award Progressive Design Build (PDB) Contract

Awarded to SFTC in February 2023

Continuation of Project Design

After design cost is agreed to with SFTC team, advance current design to final design

Initiation of Project Construction

After construction cost is agreed to with SFTC

Initiation of MSF Solar P3 Design & Construction

Continuation of Community Relations and Outreach Activities

Community meetings, CLC coordination/meetings and Key Stakeholder briefings/Business outreach

Expansion of the Business Interruption Fund (BIF)

April 2023 – Metro Board of Directors authorized the expansion of the BIF to East San Fernando Valley Light Rail Transit Project

2030

Project Completion

New Metro light rail connecting communities along Van Nuys, Panorama City, Arleta and Pacoima.



Early Construction Activities: Advanced Utility Adjustments (AUA)

What

- Relocation of LADWP underground facilities
- Activities include utility investigation, traffic control setup, saw cutting, excavation, vault & duct bank installation, and pavement restoration

When

- The first of seven AUA work packages, AUA-1, was awarded to W. A. Rasic Construction
- Work for AUA-1 began February 2023 and is anticipated to be completed by November 2023

Where

- Along Van Nuys Bl between Vose St. and Vanowen St

Progress

- Ductbank installation is on-going (night work)
- All vaults have been installed
- Construction is 84% complete
- LADWP will follow with intercept work

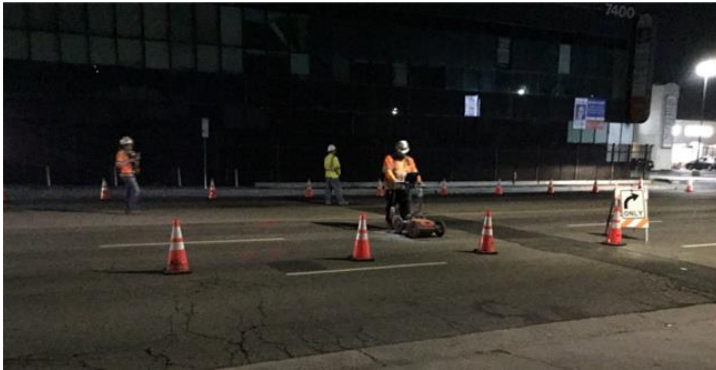


Lateral work activity near Van Nuys Bl and Hartland St.

Early Construction Activities: Utility Investigations

What

- Utility investigations
- Activities include nighttime traffic control set up with traffic lane closures, potholing operations, and street restoration



Identification of underground utilities at Van Nuys Bl & Valerio St

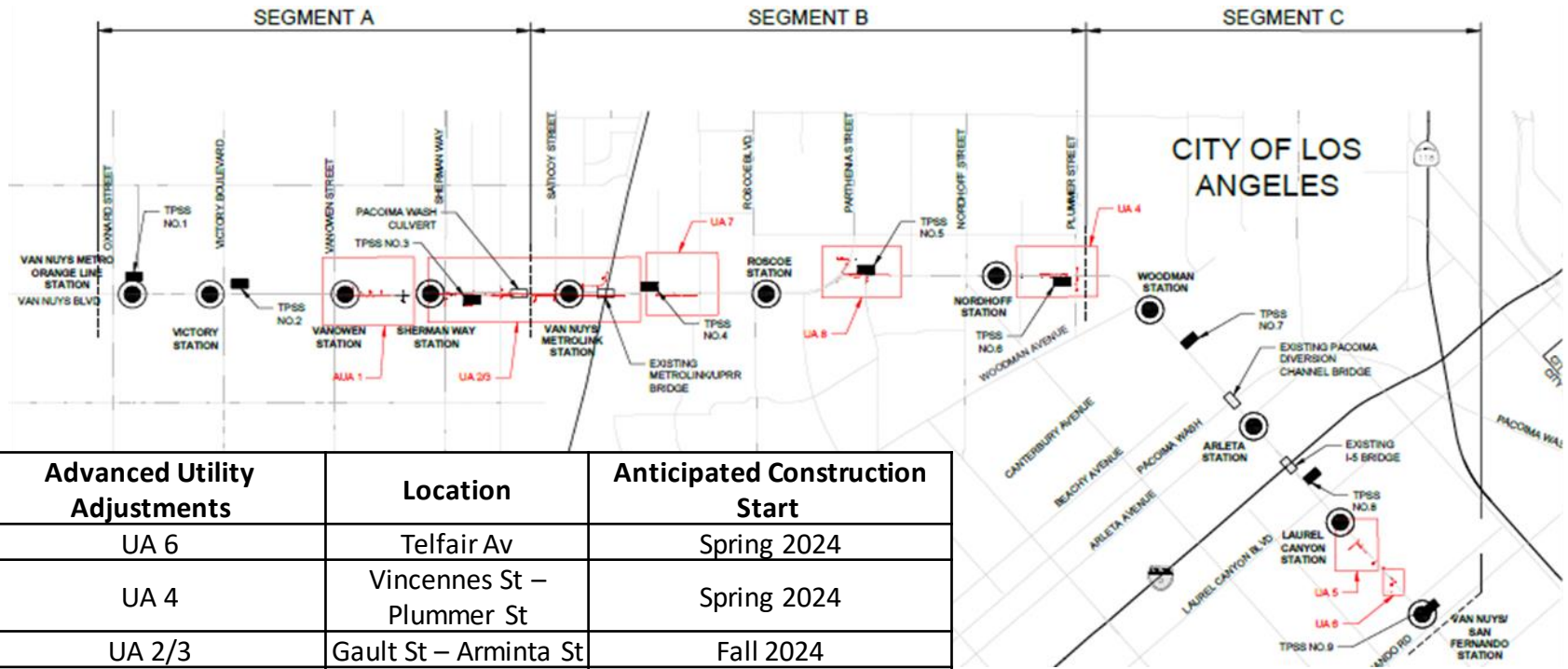
When

- Work activity began October 2023 and is anticipated for completion December 2024

Current work locations

- Along Van Nuys Bl at the Pacoima Wash, between Valerio St and Covello St.
- Along Van Nuys Bl, between Cayuga Av and El Dorado Av.

Early Construction Activities: Advanced Utility Adjustments (AUA)



Advanced Utility Adjustments	Location	Anticipated Construction Start
UA 6	Telfair Av	Spring 2024
UA 4	Vincennes St – Plummer St	Spring 2024
UA 2/3	Gault St – Arminta St	Fall 2024
UA 7	Blythe St –Lanark St	TBD
UA 5	Haddon Av	TBD
UA 8	Parthenia St & Rayen St	TBD



Future Construction Activities

- San Fernando Transit Constructors (SFTC) utility relocation work anticipated to begin in early 2024, starting at UA-6 located at Van Nuys Bl and Telfair Av.
- SFTC team to advance final design in 2024.
- Ongoing coordination with Third Party Agencies, including City of LA, LADWP, County, etc.
- Construction schedules and work will be coordinated with stakeholders.



Duct bank installation along Van Nuys Bl between Vanowen St and Vose St

Real Estate Acquisition

- The acquisition process is underway.
- A Relocation Plan for the ESFV LRT Project has been posted for comment on the Project website and at 3 County public libraries for 30 days:
 - Van Nuys Branch Library - 6250 Sylmar Av
 - Panorama City Branch Library - 14345 Roscoe Bl
 - Pacoima Branch Library - 13605 Van Nuys Bl
- Notification of the Plan has been circulated. Comments must be received by 5:00pm on Tuesday, November 14. To submit written comment, please do so by emailing rootd@metro.net or by mail:
 - Attn: Darryl Root, Real Estate
Mail Stop: 99-22-8
Los Angeles County Metropolitan Transportation Authority
One Gateway Plaza, Los Angeles, Ca 90012-2952



Metro Board Action for Approval of the Real Estate Relocation Plan scheduled for November 30, 2023.



Real Estate Acquisition: Anticipated Timeline

2023

March - May

Ongoing appraisal preparation on Maintenance & Storage Facility (MSF) parcels.

Interviews with businesses and residents displaced by acquisition being conducted.

June

Continue appraisal preparation for Maintenance Storage Facility (MSF) parcels

Appraisal task orders to appraise 3 Traction Power Substation (TPSS) site parcels awarded.

July - August

Initial appraisals expected to be reviewed for MSF and 3 TPSS parcels.

August - September

Continue appraisal Reviews for MSF and 3 TPSS parcels.

October - December

Relocation Plan released on 10/14 for 30-day public comment. Public notification circulated.

Make MSF, TPSS offers.



Construction Relations and Mitigation Programs

- In-person and virtual community construction update meetings
- Project updates at Neighborhood Council meetings
- Project briefings for Community-based Organizations and neighborhood groups
- Informational booths at community events
- Door-to-door business outreach
- Distribution of bilingual construction notices and direct outreach for current work activities
- Real Estate Relocation Plan Outreach for 30-day comment period
- Cultural Competency Plan
- ESFV LRT Project Community Leadership Council



Project Website

Metro.net/eastsfvtransit

Documents

[All active construction notices for this project](#)

[All documents for this project](#)

[Metro's Vendor Portal](#)

[Property Acquisition](#)

[Construction Business Profile Form](#)

[Can't find something? Contact Public Records](#)

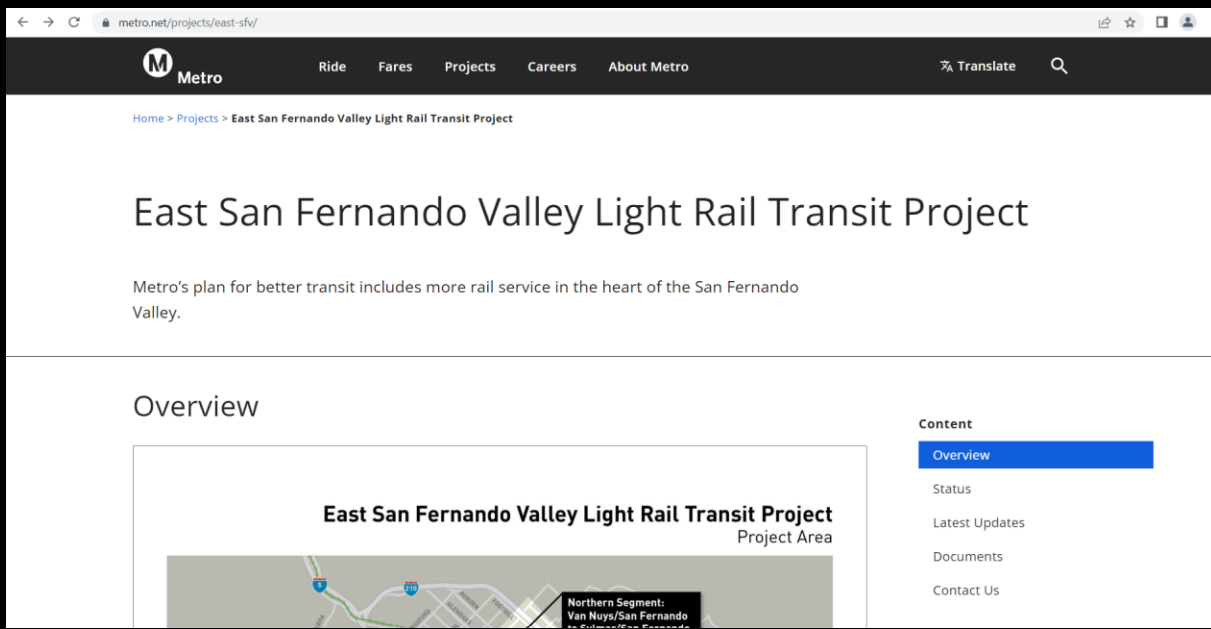


Contact Us

[Sign up for project updates.](#)



818.701.3844



Project website



Information Distribution

Information distributed by:



Resident and Business Outreach



Email Updates



Website Postings

East San Fernando Valley Light Rail Transit <eastsvrtransit@metro.net>

East San Fernando Valley Light Rail Transit Project

Community Update Meeting

Please join us at our upcoming community meetings to receive the latest updates on the ESFV LRT Project. Come hear from our Project Team as they provide a project overview, updates on community outreach activities, discuss the latest on the Project's Community Leadership Council (CLC), and provide information on business mitigation programs.

Metro will host two meetings, one virtual via Zoom and the other in-person in the Arleta

Email reminder for October and November community meeting.

East San Fernando Valley Light Rail Transit Project

Van Nuys Bl between Cayuga Av and El Dorado Av: Advanced Utility Work October 16, 2023

The East San Fernando Valley Light Rail Transit (ESFV LRT) Project will improve connections and access to crucial destinations while connecting transit users to the growing network in the San Fernando Valley. The Southern Segment of the project includes a 6.7-mile at-grade alignment that will operate in the center of Van Nuys Bl, from the Metro G Line (Orange) Van Nuys Station to Van Nuys Bl and San Fernando Rd.

SUMMARY
As part of the ongoing advanced utility work for the ESFV LRT Project, Metro's contractor, San Fernando Transit Constructors (SFTC), will perform utility investigation. This work will include potholing operations and will require traffic lane closures on Van Nuys Bl between Cayuga Av and El Dorado Av. Work to be performed will include traffic control, potholing operations and street restoration. Work will be performed on Monday through Saturday, between 6:00pm and 6:00am.

Construction notice for Advanced Utility Work

East San Fernando Valley Light Rail Transit Project

October 2023

Join us!

The East San Fernando Valley Light Rail Transit (ESFV LRT) Project will improve connections and access to crucial destinations while connecting transit users to the growing network in the San Fernando Valley. The

Virtual meeting via Zoom:
Wednesday, October 25, 2023
6:00pm to 7:30pm
Meeting Link:
<https://us02web.zoom.us/j/93513180180>

October and November community meeting flyer.

Community Leadership Council Overview

The CLC aims to promote, foster, and advance community-based dialogue and opportunities arising from the project and within the project area.

What are the Qualifications and Council Structure?

- Two-year terms
- Quarterly Meetings
- 15 stakeholders
- Live, work, attend school, active member of a service organization, or a representative of a business or commercial property in the Project area

The CLC will work with Metro staff on project-related issues such as:

Economic Development & Business Support

- Job Creation / Construction Careers
- Construction activity (timing, size, closures, small impacts, etc.)
- Eat Shop Play

Community Engagement

- Landscaping at Traction Power Sub Station (TPSS) sites
- Share information about artwork opportunities
- Station Naming
- Streetscape Improvements
- Metro CBO Strategy
- Cultural Competency Plan



CLC: Implementation & Anticipated Timeline

Early 2023

Initiation of Community Leadership Council community engagement activities

Application is released and interested parties are invited to apply

Spring 2023

CLC applications are scored and evaluated by a panel of CR Metro staff

CR staff recommends applicants for interview with an expanded panel of Metro staff

Summer 2023

Interview panel makes recommendation for a appointment

CLC finalists are invited to join the CLC

WE
ARE
HERE

Fall 2023

CLC Board Orientation

Community Leadership Council sets meeting calendar



CLC Members (2023-2025)



Sheila Avila Luna



Sonya Blake



Michael Fiore



Sergio Ibarra

CLC Members (continued)



Yvonne Mariajimenez



Jonathan B. Martinez



Brenda Morales



Maria Nieto

CLC Members (continued)



Sam Papoyan



Roxy Rivas



Maria Salgado



Sandra Sanchez

CLC Members (continued)



Kathy Schreiner



Marc Shouhed



Seth Wulkan

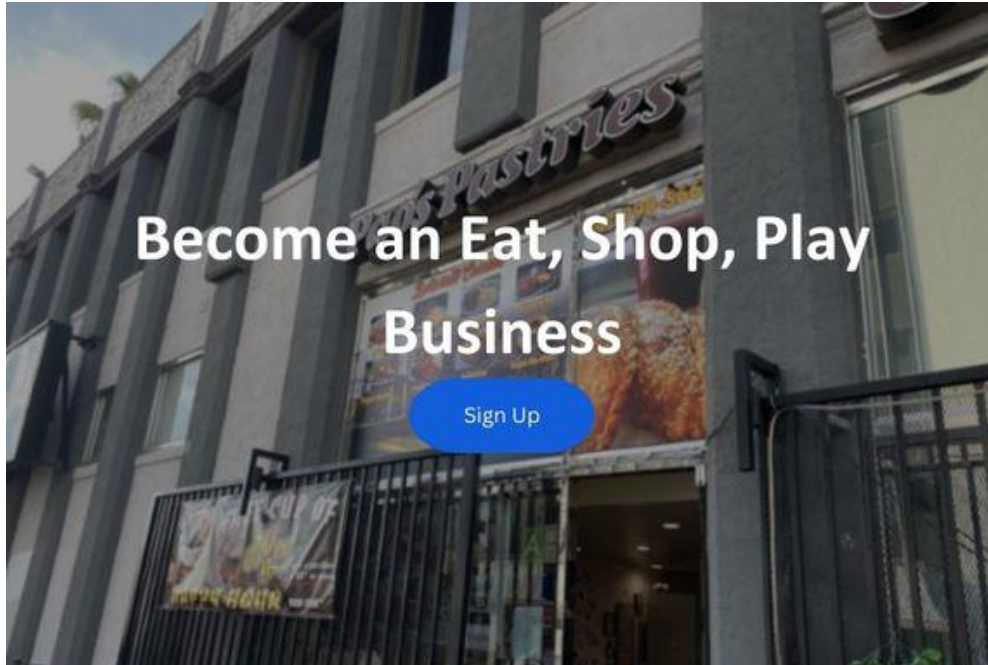


Small Business Mitigation Programs

- **Eat Shop Play (ESP)**
 - Metro's Eat Shop Play program supports local businesses as we build more rail for LA
 - Participation is free
 - Businesses located along Metro Rail construction projects are eligible to sign up for marketing assistance
 - Benefits to Local Businesses include Print/digital ads and Social media and email marketing



Eat Shop Play Sign Up



metro.net/eatshopplay | eatshopplay@metro.net

Business Solution Center (BSC)

- Metro’s Business Solution Center provides hands-on business assistance and support services to small businesses impacted by transit rail and bus rapid transit construction projects
- Services are provided at no cost and there are no eligibility requirements to participate
- Types of services include: business coaching, long-term business planning, increasing access to technology, accounting management, marketing support, access to capital and more



CRENSHAW/LAX TRANSIT PROJECT
BUSINESS SOLUTION CENTER

How to work with us.

STEP 1 – IDENTIFY
Identify your business needs:

- > Accounting management
- > Access to capital
- > Business development
- > One-on-one counseling
- > Business workshops
- > Marketing assistance
- > Web development & social media
- > Other business-related services

STEP 2 – CONTACT
Contact the Business Solution Center:

- 4401 Crenshaw Bl, Suite 201
Los Angeles, CA 90043
Monday–Friday, 9am–5pm
- 323.299.9660; ext 2289
- metrobosc@gmail.com
- metrobosc.net/crenshaw

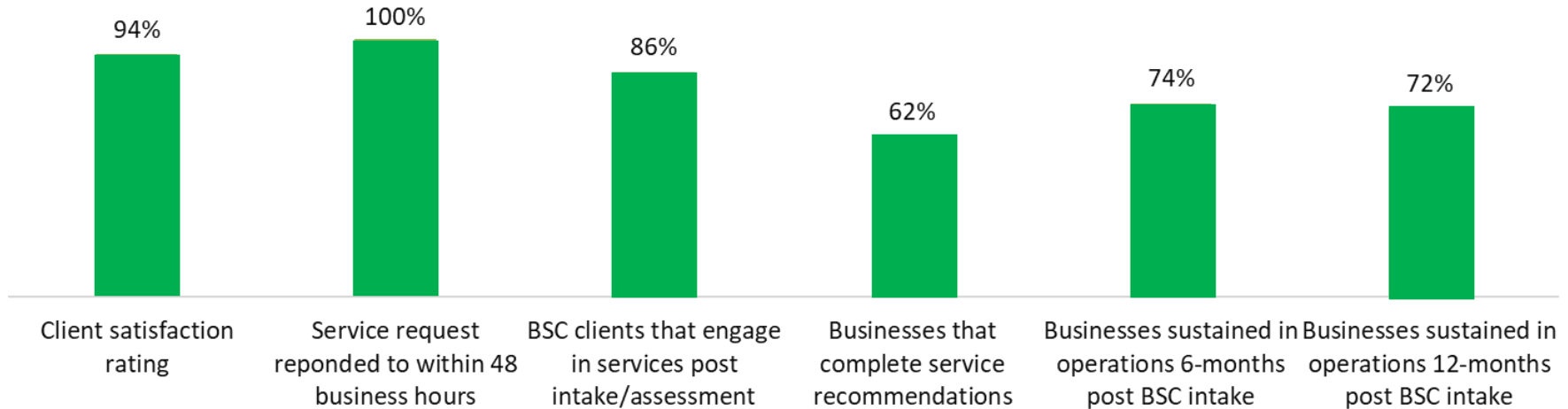
STEP 3 – MEET
Meet with a business advisor and complete the necessary forms.

STEP 4 – BEGIN
Receive business support:

- > Client support
- > Referral to small business resources
- > Enroll in a workshop or training

Sample C/LAX BSC flyer. Flyers for the ESFV LRT BSC will be in multiple languages.

Crenshaw/LAX Transit Project Business Solution Center Measures of Effectiveness through Calendar Year 2019



Pilot Business Interruption Fund (BIF)

Helping small “mom and pop” businesses continue to thrive throughout construction and post construction.

Metro’s Business Interruption Fund (BIF) provides financial assistance to small “mom & pop” businesses directly impacted by Metro transit rail construction along four project areas:

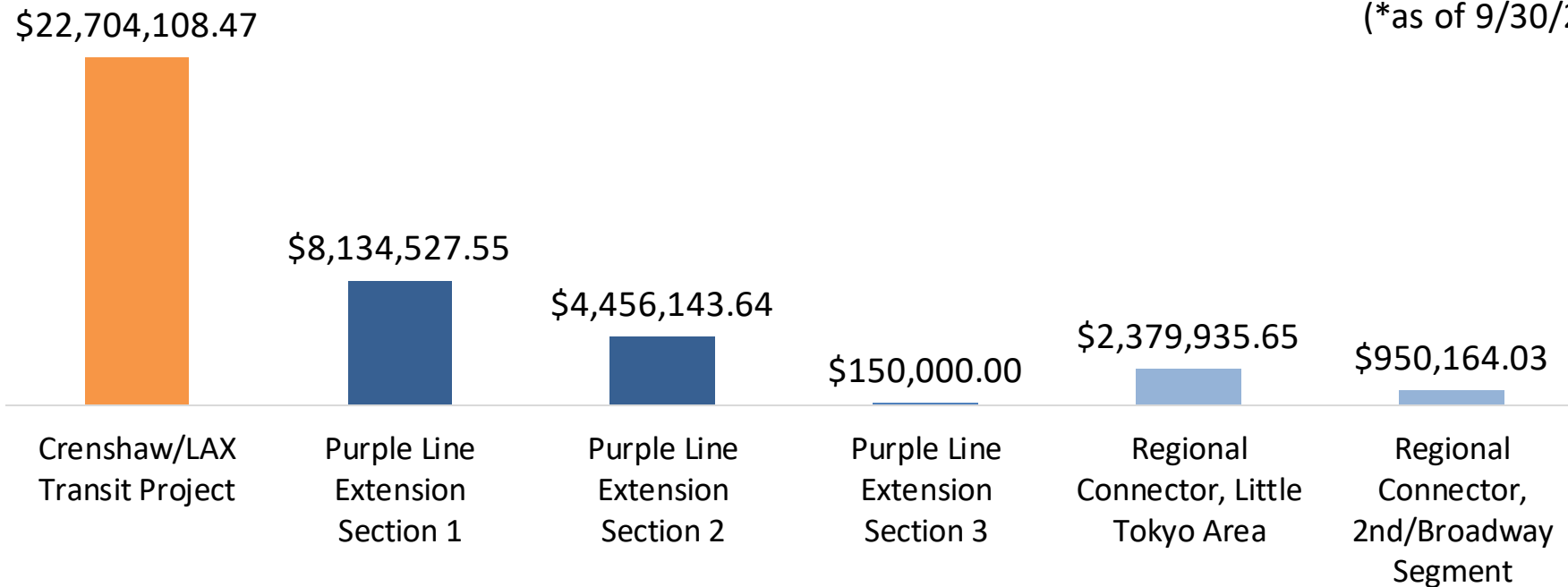
- Crenshaw/LAX Transit Project
- Purple Line Extension, Sections 1, 2 & 3
- Regional Connector Project, Little Tokyo area & 2nd/Broadway Segment
- East San Fernando Valley Light Rail Transit Project



Pilot Business Interruption Fund (BIF)

Value of BIF Grants Awarded:
\$38,774,879.34

(*as of 9/30/23)

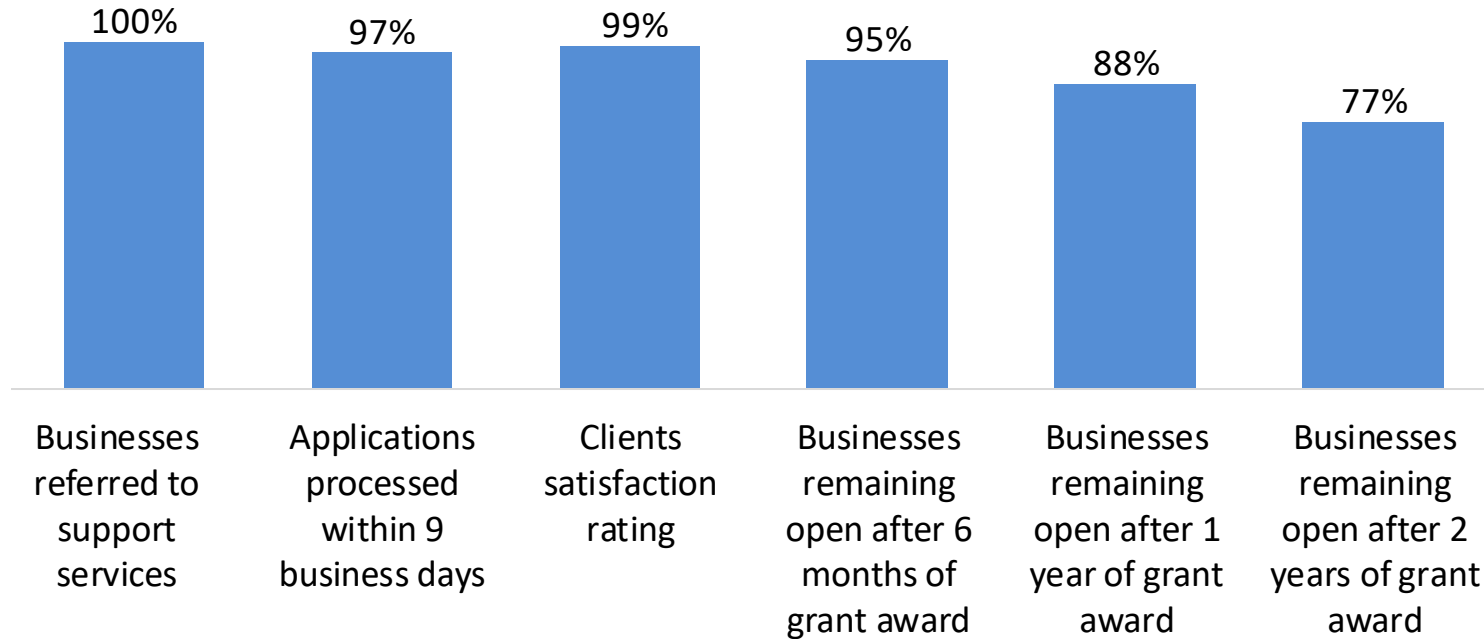


*BIF Grants do not cover COVID-19 related impacts.

Pilot Business Interruption Fund (BIF)

BIF Measures of Effectiveness (MOEs)

(*As of 2023, Q3)



BIF & BSC Contact Information

- **Next Steps**

- The BIF & BSC are anticipated to launch on the East San Fernando Valley Transit Project during Q1, 2024
- Small business owners, community members and stakeholders can expect to hear more about the launch coming soon!

- **Contact Us**

- To reach Metro BIF & BSC program staff please contact:
 - Angela Winston, Director, BIF & BSC at WinstonA@metro.net or 213.922.7669
- For more information about the BIF, please visit our website at Metro.net/bif



Questions?

Stay connected to this project.



818.701.3844



eastsfvtransit@metro.net



metro.net/eastsfv



[@metrolosangeles](https://twitter.com/metrolosangeles)



[losangelesmetro](https://www.facebook.com/losangelesmetro)



A bright yellow speech bubble with rounded corners and a tail pointing towards the bottom right. The words "THANK YOU" are cut out of the bubble in a bold, blue, sans-serif font. The bubble is set against a solid blue background.

THANK YOU