

Welcome!

We will begin in a few moments.

Vehicle Miles Traveled (VMT) Mitigation Program
Stakeholder Meeting #1

May 16, 2023





VEHICLE MILES TRAVELED (VMT) MITIGATION PROGRAM
STAKEHOLDER MEETING #1
MAY 16, 2023

Housekeeping

Today's meeting is being recorded.



Attendee cameras are off and microphones are muted.



During the meeting, comments can be submitted using the Q&A icon.



To make verbal comments or questions following the presentation, please use the 'raise hand' icon. If you are joining by phone, you can **Raise Hand using *9** and **Mute/Unmute using *6**



For technical support, call or text 626.216.7304.

Community Guidelines

Metro is committed to ensuring that all participants can fairly and clearly share ideas, comments and concerns about this project. To provide a safe and equitable process, we are asking for your help.

During this meeting, please:

- > Respect the format of the meeting and allow everyone an opportunity to comment
- > Turn off cell phones and background noise when speaking
- > Treat fellow community members, agency representatives, Metro staff and others with respect
- > Address all comments to Metro staff and consultants – not to other attendees
- > Maintain a conversational tone



**Metro has a plan to make it easier to get around LA.
As part of that plan, Metro is working to develop a
framework to reduce and offset impacts from highway
projects and provide greater mobility options
throughout the county.**

Staff Introductions



Julio Perucho

Project Manager,
Complete Streets &
Highways,
Countywide Planning
& Development



**Jefferson Isai
Rosa**

Manager, Community
Relations,
Operations &
Countywide Initiatives



**Erica Boatman-
Dixon**

MBI Media
Project Manager,
Outreach



Chelsea Richer

Fehr & Peers
Project Manager



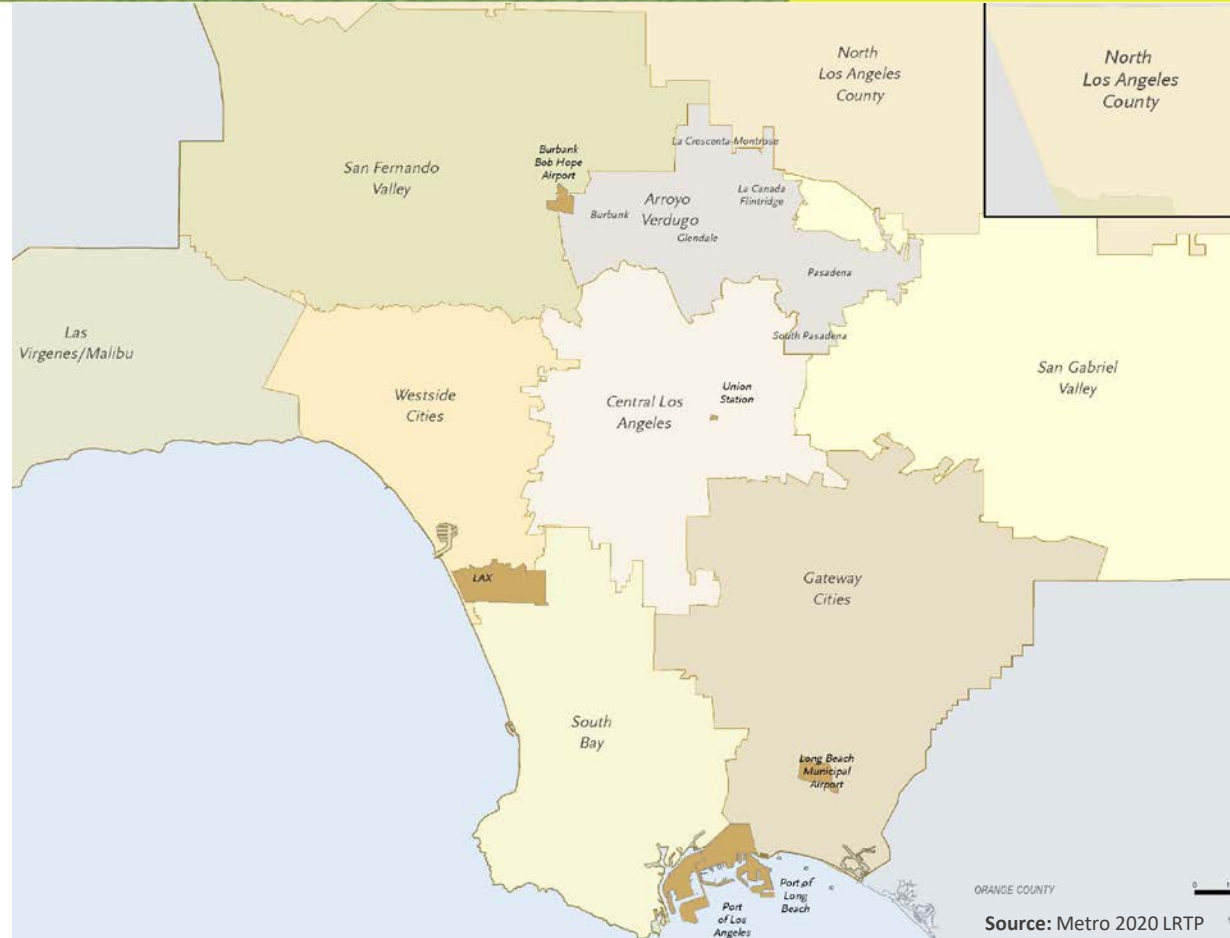
Agenda

- I. Relevant Terminology
- II. Policy Background
- III. Measure R & M Commitments
- IV. VMT Mitigation Program Goals & Approach
- V. Let's Engage
- VI. Future Meetings

Poll – Stakeholder Representation

> **What Metro region or subregion(s) do you represent?**

- > Arroyo Verdugo
- > Central Los Angeles
- > Gateway Cities
- > Las Virgenes/Malibu Cities
- > North County
- > San Fernando Valley
- > San Gabriel Valley
- > South Bay Cities
- > Westside Cities
- > Countywide



Relevant Terminology

- > **VMT** refers to **vehicle miles traveled**, which measures how much driving is happening in the county.
- > **LOS** refers to **level of service**, which measures congestion and delay for drivers.
- > **CEQA** refers to the **California Environmental Quality Act**, which requires projects to identify significant environmental impacts.



Policy Background

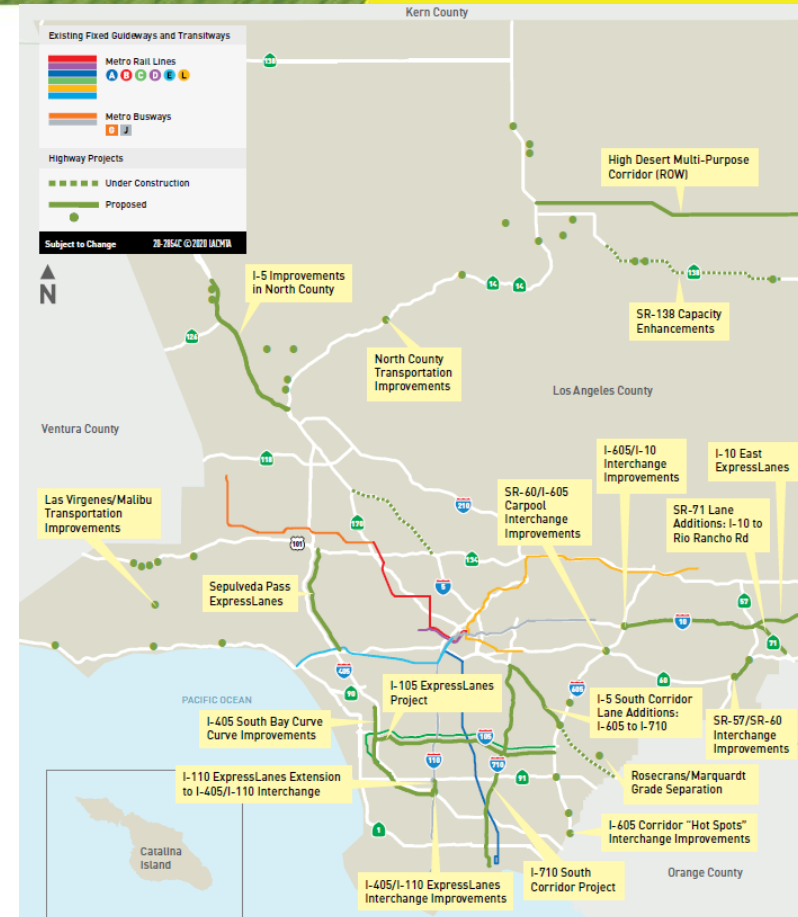
Senate Bill (SB) 743:

- > Shifts CEQA analysis from measuring the impact *on drivers* (i.e., LOS/congestion) to the impact *of driving on the environment* (i.e., VMT).
- > Contributes to the following statewide goals:
 - Reduction of greenhouse gas emissions
 - Infill development
 - Public health through active transportation
- > Caltrans further established policy for CEQA compliance for projects on the state highway system.



Measure R & M Commitments

- > Measures R & M include multi-modal project lists, and include some roadway projects that are likely to increase VMT, causing a CEQA impact.
- > Despite this, the package of roadway projects are likely to:
 - Improve **travel time for drivers**
 - Improve **access to opportunity**
 - Improve **safety**
 - Improve **truck corridors**
- > Metro Objectives for Multimodal Highway Investment further incorporate a focus on improving equity outcomes



VMT Mitigation Program Goals



> **Explore** various ways to measure project-related increases and reductions in VMT



> **Evaluate** the VMT impacts of Metro's highway improvement projects



> **Establish** a Mitigation Program to address VMT impacts that meets the needs of projects on the State Highway System



> **Integrate** Equity Platform goals and process elements into this effort & the resulting Mitigation Program

This program strives to ease traffic...

Better Transit

Transit Projects

Bus Improvements

New Mobility Options

Less Congestion

Roadway Improvements

Congestion Management

*Improved and Efficient Goods
Movement*

Complete Streets

Bike and Pedestrian Projects

Local Street Improvements

*Station and Stop Access
Enhancements*

Access to Opportunity

Workforce Initiatives

*Support for Local
Businesses*

*Transit Oriented
Communities*

...and it may serve many other Metro priorities

Better Transit

Transit Projects

Bus Improvements

New Mobility Options

Less Congestion

Roadway Improvements

Congestion Management

Improved and Efficient Goods Movement

Complete Streets

Bike and Pedestrian Projects

Local Street Improvements

Station and Stop Access Enhancements

Access to Opportunity

Workforce Initiatives

Support for Local Businesses

Transit Oriented Communities



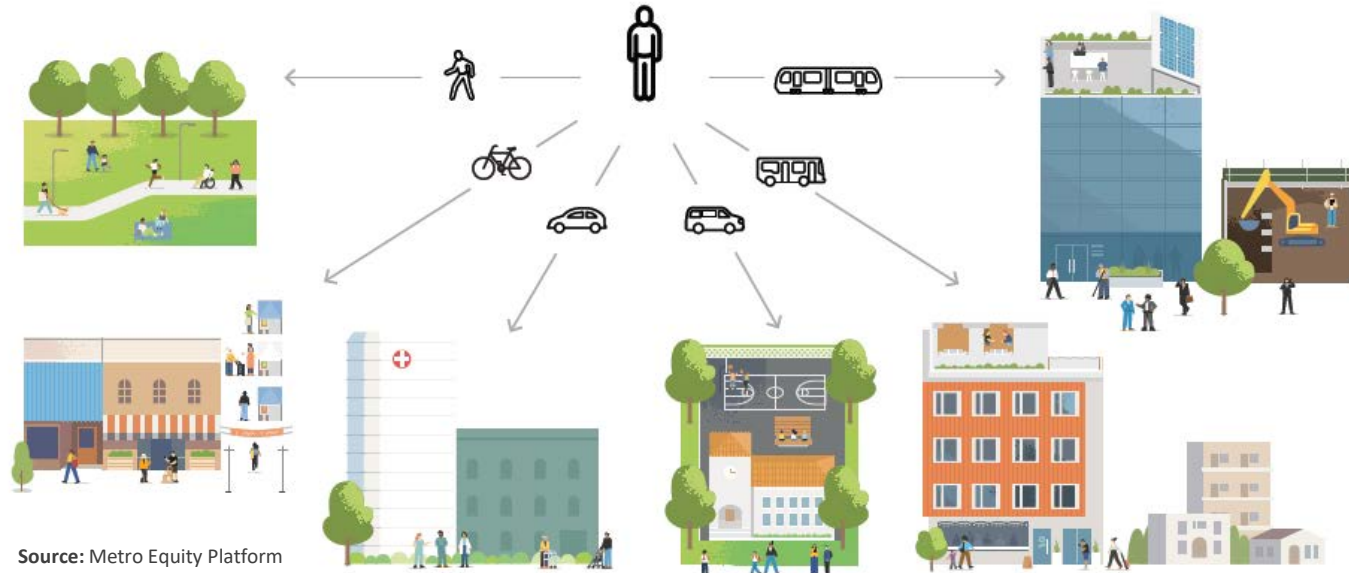
Equity



Sustainability

Metro's Definition of Equity

Equity is both **an outcome** and a **process** to address racial, socioeconomic, and gender disparities to ensure **fair and just access to opportunities** such as jobs, housing, education, mobility options, and healthier communities.



Source: Metro Equity Platform



Equity in Process



Equity in Outcomes

> VMT mitigation is an equity-related goal in and of itself with lower VMT meaning:

- Lower air pollution/greenhouse gas emissions
- Reduced collision risk
- Reduced financial burden (maintenance & fuel)
- Reduced need to rely on car for travel
- Reduced travel time due to shorter trip lengths

> Household characteristics that affect VMT:

- Income
- Size & composition (children, working age population)
- Location in the region
- Auto ownership rates
- Access to transit
- Preferences and habits



Equity Focus Communities (EFCs)

An **equity** focus requires ensuring access to opportunity for all.

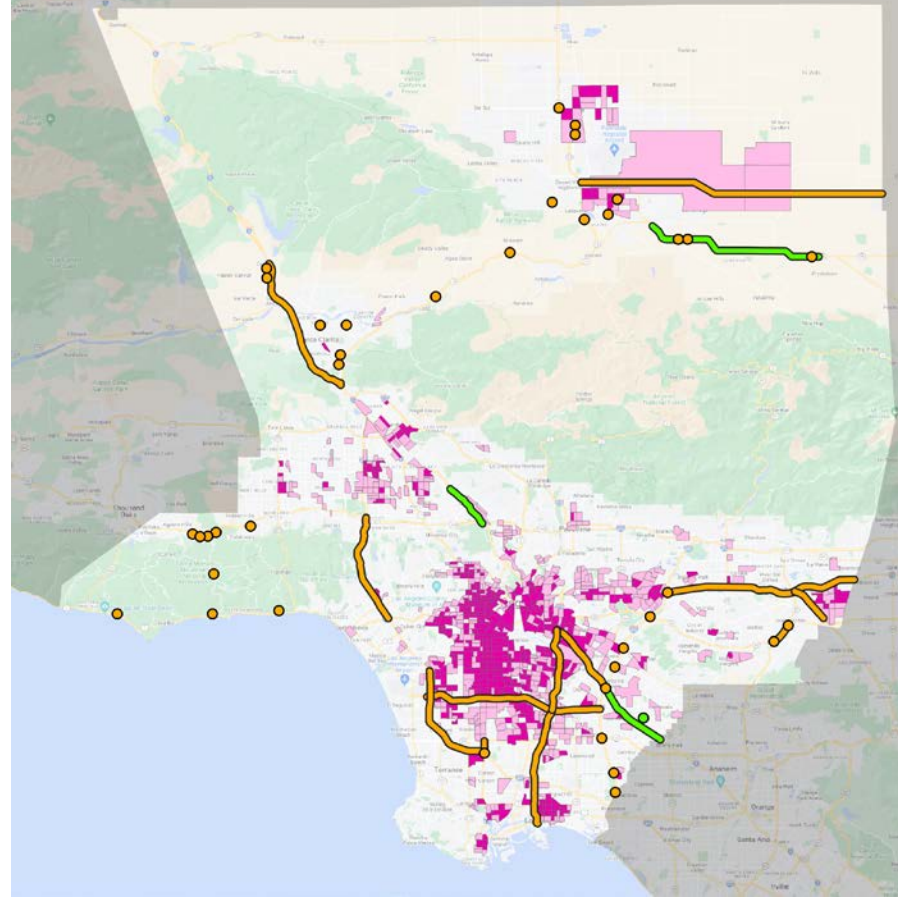
Metro created the EFC designation in 2019 to help identify where transportation needs are greatest. The updated 2022 EFC Index Map considers the concentration of three characteristics:

- Low-income households;
- Black, Indigenous, and other People of Color (BIPOC) residents; and
- Households with no access to a car.

Within this index, the top two quintiles ("High Need" and "Very High Need") are designated EFCs.



Source: Metro Office of Equity & Race; Complete Streets & Highways Division



Equity Focus Communities (EFCs)

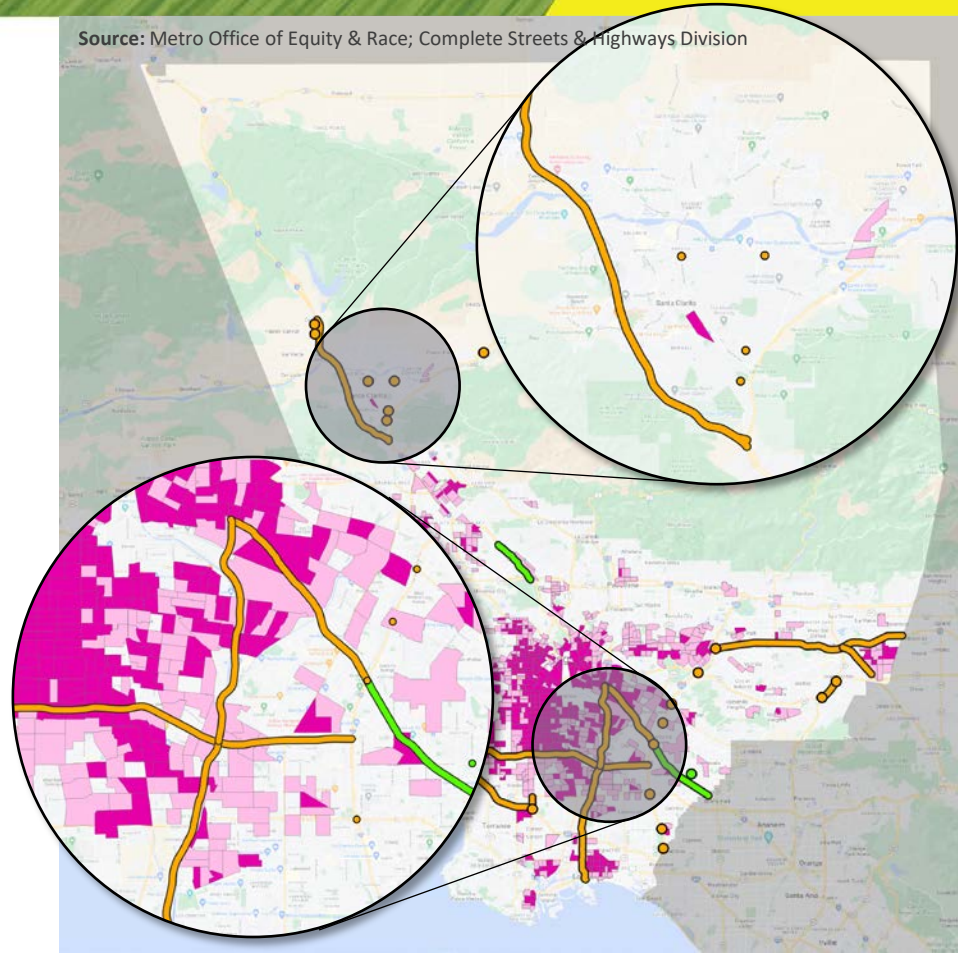
An **equity** focus requires ensuring access to opportunity for all.

Metro created the EFC designation in 2019 to help identify where transportation needs are greatest. The updated 2022 EFC Index Map considers the concentration of three characteristics:

- Low-income households;
- Black, Indigenous, and other People of Color (BIPOC) residents; and
- Households with no access to a car.

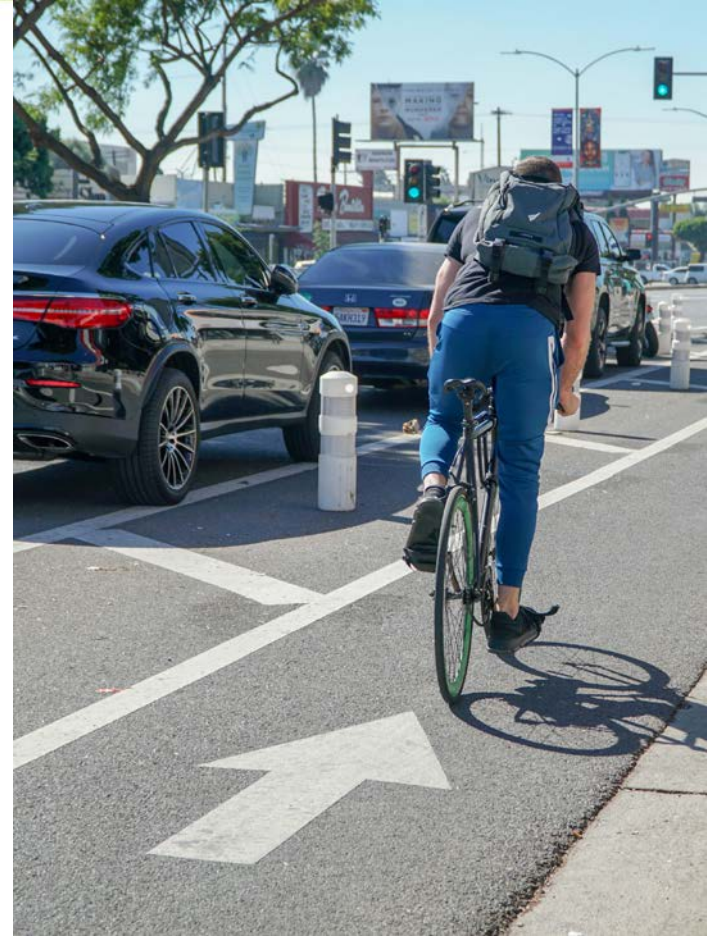
Within this index, the top two quintiles ("High Need" and "Very High Need") are designated EFCs.

Source: Metro Office of Equity & Race; Complete Streets & Highways Division



How Can We Equitably Reduce VMT?

- > **Transit Operations** – More frequent service, more service hours
- > **Transit Projects** – Bus-only lanes, bus stops, new vehicles to support more service
- > **Transit Programs** – Fare subsidies
- > **Multi-Modal Projects** – Bike-share & scooter-share expansion, active transportation corridors
- > **Multi-Modal Programs** – Bike-share & scooter-share fare subsidies, bike purchase subsidies
- > **Pricing Strategies** – Corridor/cordon pricing, VMT tax, parking pricing
- > **Land Use Strategies** – Transit-oriented housing & development, affordable housing



Let's Engage

1. Provide information on the development of the program and key decisions
2. Learn about stakeholder priorities for ways to reduce VMT
3. Solicit input on selecting and weighting criteria for evaluating VMT reduction options
4. Solicit input on program framework

Let's Engage

1. Provide information on the development of the program and key decisions
2. Learn about stakeholder priorities for ways to reduce VMT
3. Solicit input on selecting and weighting criteria for evaluating VMT reduction options
4. Solicit input on program framework



What mode of transportation do you take on a typical day?

- > Bus (Metro, DASH, Big Blue Bus, Foothill Transit, other)
- > Rail (Metro lines, Metrolink, Amtrak, other)
- > Bike (Traditional Bike, Electric Bike, Bikeshare)
- > Rideshare (Metro Micro, Vanpool, Rideshare Service)
- > Vehicle (Single Rider)
- > Vehicle (Carpool)
- > Vehicle (ExpressLanes)
- > Motorcycle, Moped, Three-Wheeled Motorcycle
- > Walk, Skateboard, Bird Scooter

Tell Us More!

Additional investments and improvements in which programs would get you, personally, out of your vehicle?

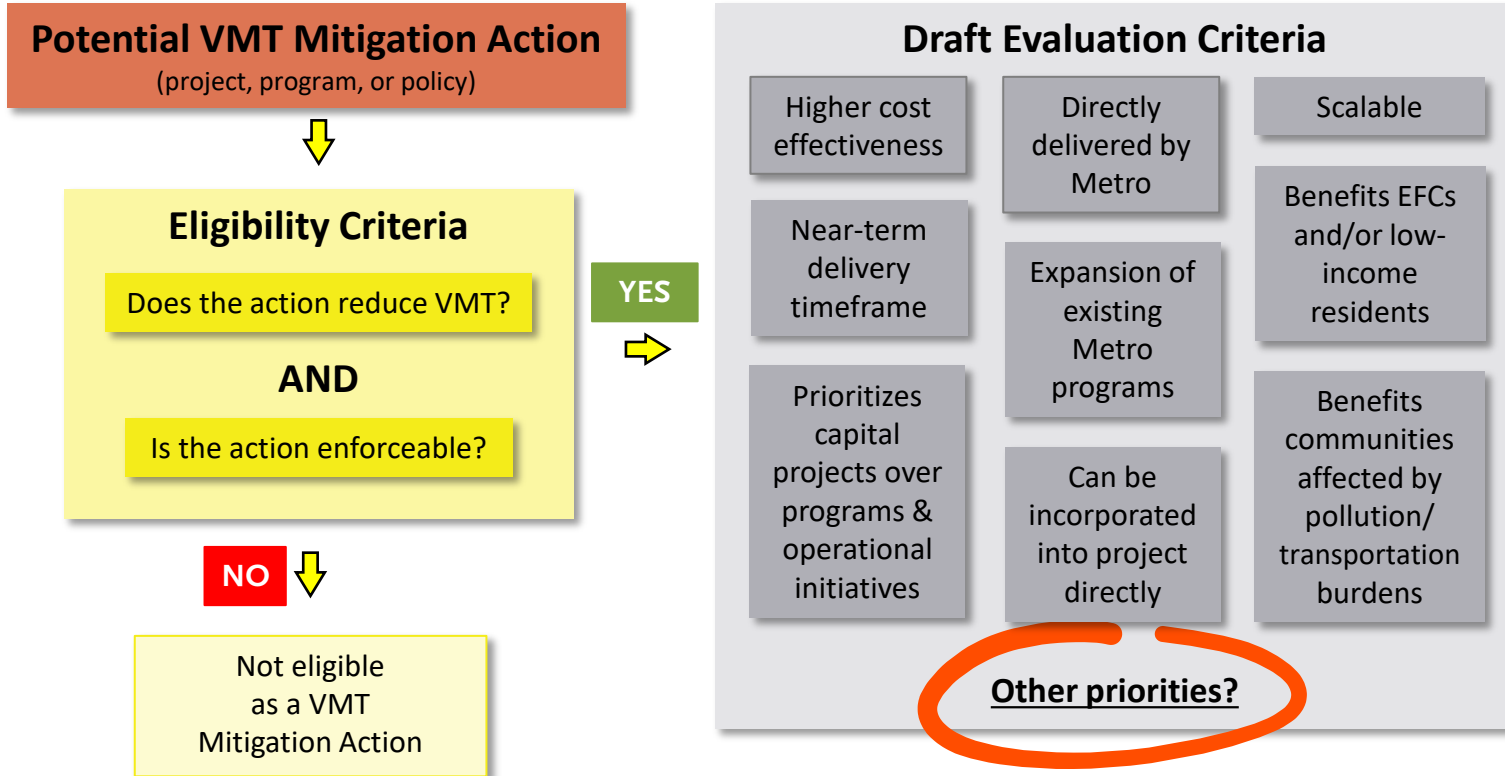
- > Bus Rapid Transit
- > Transit Service Frequency
- > Ridesharing Program
- > Discounted Transit Program
- > Transit Network Coverage or Hours
- > Trip Reduction Program
- > Trip Reduction Marketing
- > Bikeshare Program
- > None of the above
- > Other: There are other actions that aren't reflected here



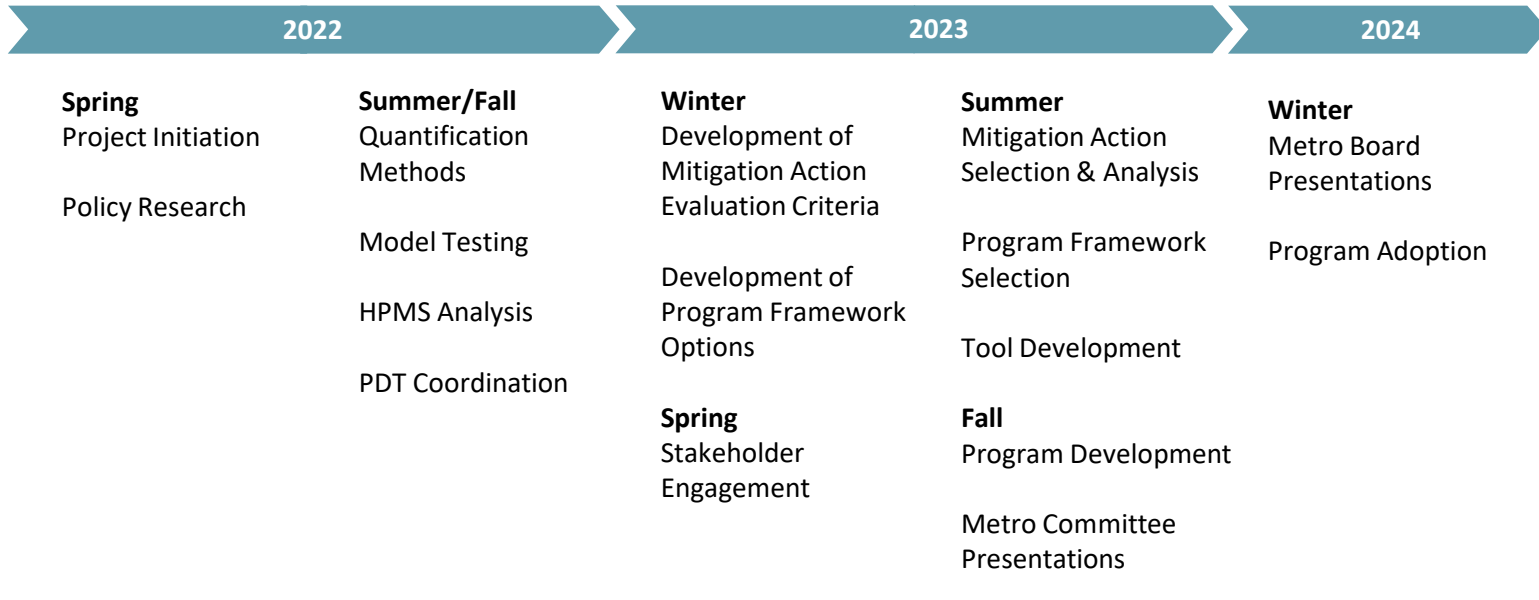
Which improvements would best encourage your communities to drive less?

- > Bus Rapid Transit
- > Transit Service Frequency
- > Ridesharing Program
- > Discounted Transit Program
- > Transit Network Coverage or Hours
- > Trip Reduction Program
- > Trip Reduction Marketing
- > Bikeshare Program
- > None of the above
- > Other: There are other actions that aren't reflected here

Next Time: Deciding How to Reduce VMT



Project Schedule



ONGOING POLICY WORKING GROUP ENGAGEMENT



Thanks For Joining Us!

Future Stakeholder Meetings

- > Virtual Stakeholder Meeting #2 – **June 13, 2023**
- > Virtual Stakeholder Meeting #3 - **August 2023**
- > Virtual Stakeholder Meeting #4 - **October 2023**



Questions & Discussion

Questions & Discussion - Interacting



Attendee cameras are off and microphones are muted.



Questions or comments can be submitted using the Q&A icon.



To make verbal comments or questions following the presentation, please use the 'raise hand' icon. If you are joining by phone, you can **Raise Hand using *9** and **Mute/Unmute using *6**



For technical support, call or text 626.216.7304.

Stay Connected!



Julio Perucho, *Project Manager*

Metro

Manager, Transportation Planning, Countywide Planning & Development

Complete Streets & Highways

One Gateway Plaza, MS 99-18-2

Los Angeles, CA 90012



213.922.4575



vmt@metro.net



metro.net/vmtmitigation



@metrolosangeles



losangelesmetro

