

Welcome!

We will begin in a few moments.



Metro



We're working to improve the 5 in North County.

I-5 NORTH COUNTY ENHANCEMENTS PROJECT



Metro

Housekeeping



This is a webinar. Attendee cameras are off, and microphones are muted.



Submit your questions by using the Q&A feature



This meeting is being recorded. Video file will be posted on our website at metro.net/i-5-enhancements.

Welcome! Thank you for joining us.

15 min	Metro Announcements Project Overview	Saroya Sandiford , Community Relations Manager Metro
30 min	Upcoming Construction Activities	Billy Parent , Contractor Communications Manager OHLA-USA
30 min	Q&A / Discussion	Robyn Lopez , Community Relations Officer Metro



Discounted Fares/LIFE Program/Student GoPass

Discounted Prices

- **Buy a pass, save half**
 - 1-Day, 7-Day and 30-Day passes at half-price savings
 - \$3.50 for a day pass, \$12.50 for a weekly pass and \$50 for a 30-day pass
 - The fares will be available on TAP vending machines, taptogo.net and at Metro Customer Centers for purchase

Low-Income Fare Is Easy (LIFE) Program

- **New LIFE riders will get 90 days of free rides**
- \$26 for a 30-day pass (regularly \$76)
- \$6.50 for a 7-day pass (regularly \$19.50).
- To Sign up for the LIFE Program visit www.metro.net/riding/life/

Metro Student GoPass

- **Free** passes to ride the Metro System (and participating transit operators)
- K-12 and community college students at participating schools and/or school districts in L.A. County
- Visit www.metro.net/gopass for more information



PROJECT OVERVIEW



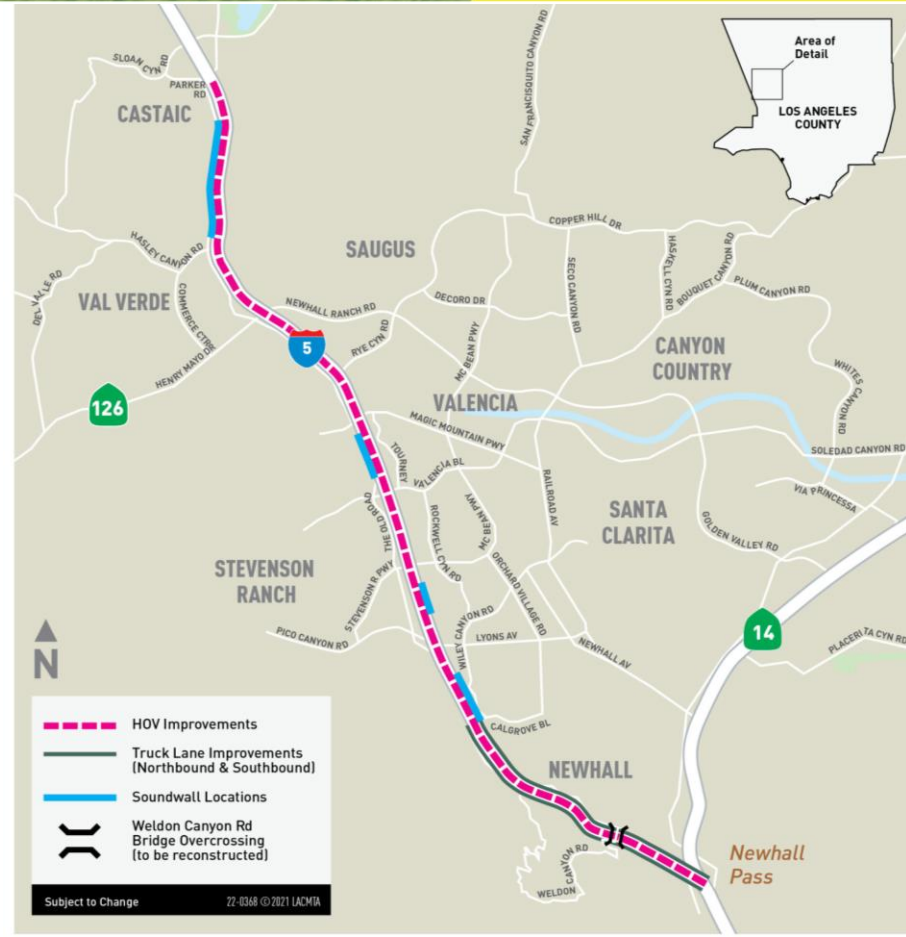
Metro

Project Overview

Enhancements on I-5 between the SR-14 interchange and Parker Road in Castaic, along with Intelligent Transportation System (ITS) improvements on I-5 between the I-405 and I-210.

The scope of work includes:

- 14-miles of HOV/carpool lanes in each direction
- Four (4) sound walls segments (12 sound walls)
- Replacement of Weldon Canyon Rd bridge
- Seven (7) bridge widenings
- Extension of truck lanes
- 13.6-miles of median paving
- 43 Retaining walls
- Intelligent Transportation System Improvements



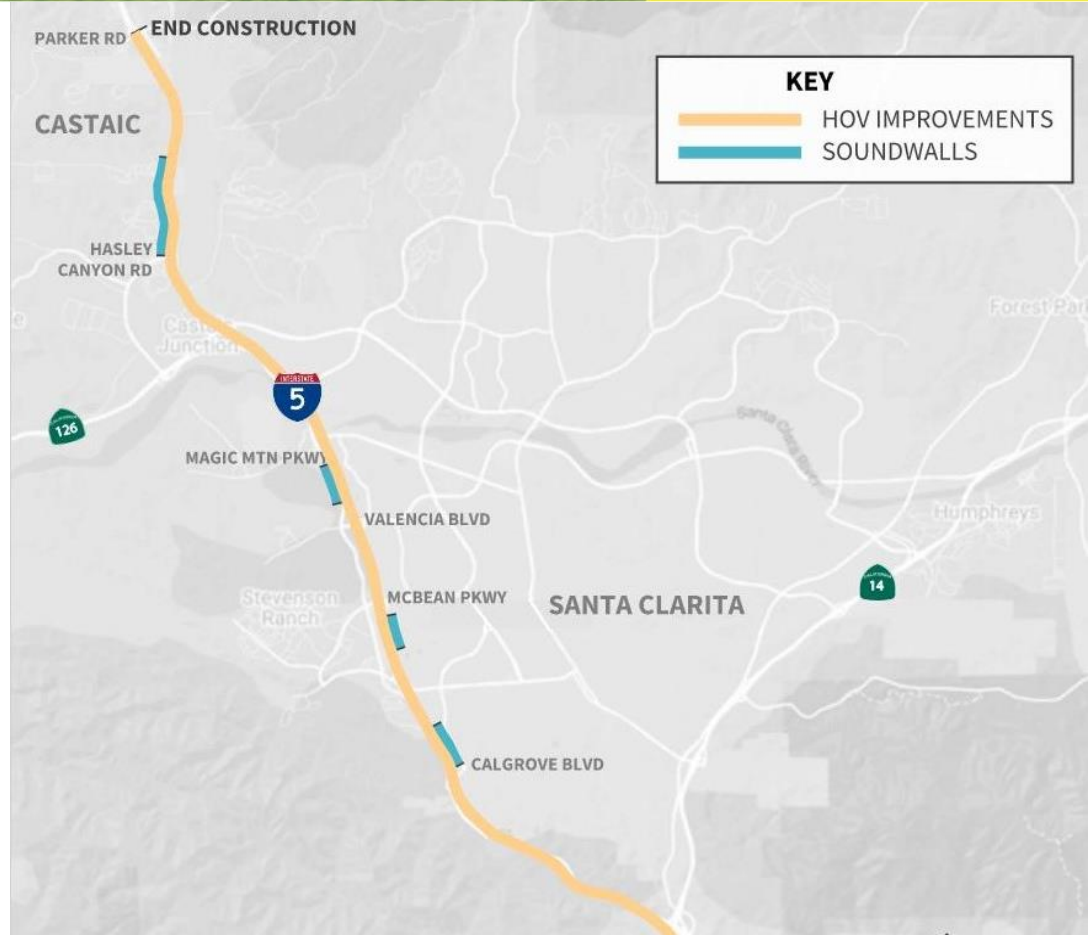
Sound Walls Segments

I-5 Southbound

- North of Hasley Canyon Rd
- Magic Mountain Pkwy - Valencia Bl

I-5 Northbound

- South of McBean Pkwy
- North of Calgrove Bl



UPCOMING CONSTRUCTION

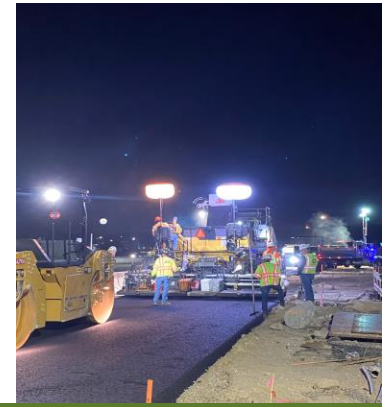
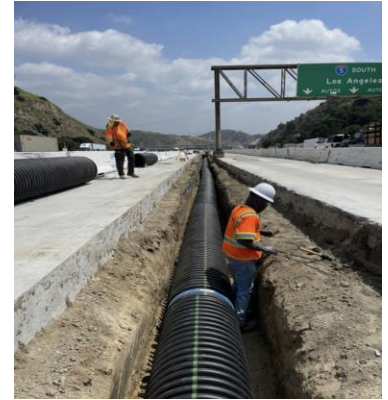


Metro

Ongoing Construction Activity – Spring 2022

I-5 between SR-14 and Magic Mountain Pkwy

- Center median drainage installation
- Outside shoulder grading, paving and concrete work
- Vegetation clearing along outside shoulders
- Center median concrete removal, guard rail removal, excavation, and shoring installation.



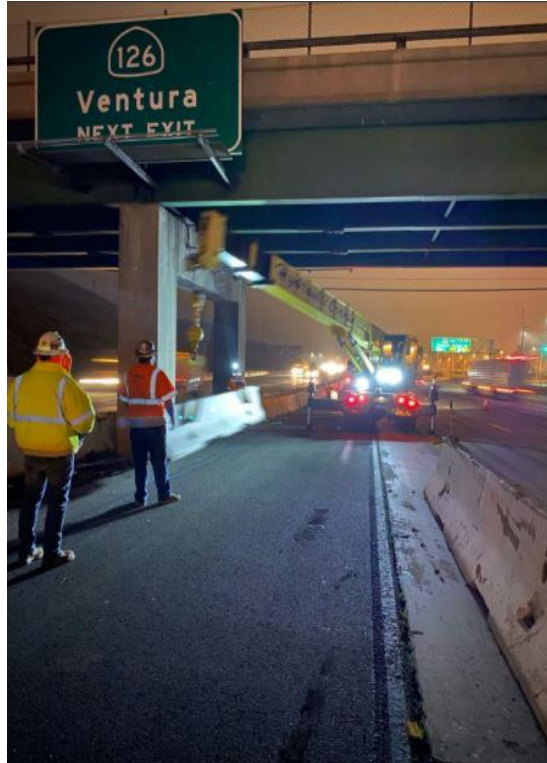
Above: examples of recent project construction activity in this area.



Ongoing Construction Activity – Spring 2022

Median Construction – I-5 between Rye Canyon Rd and Parker Rd

- Striping, k-rail installation
- Pot holing/utility investigation
- Excavation, grading, hauling
- Concrete removal, drainage, and center median construction.

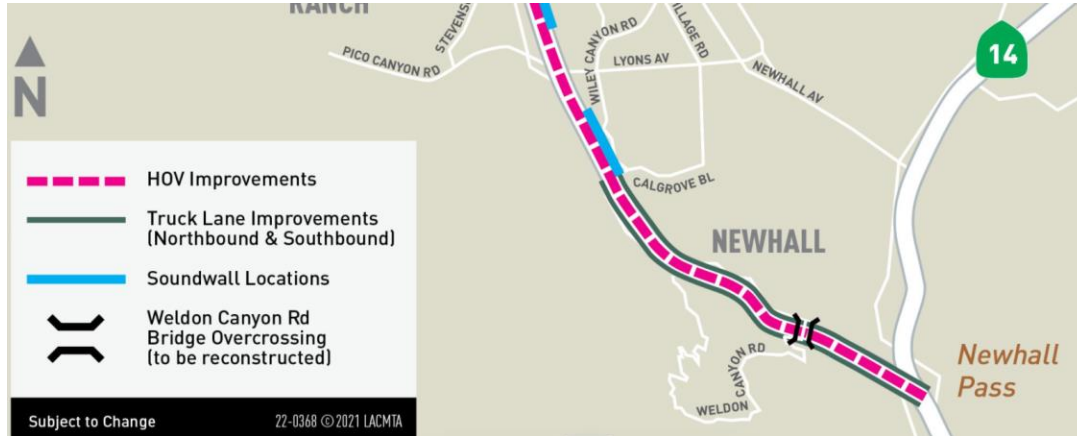


Performing center median k-rail installation, utility investigation, and excavation.

Vegetation Removal

Ongoing thru Summer 2022

- Controlled removal of shrubs and trees along the I-5 shoulders, between Calgrove Bl and Weldon Canyon overcrossing
- Typical equipment: excavators, hauling trucks, loaders
- Dust control will be implemented as needed
- Anticipated to continue thru Summer 2022



Performing vegetation removal at SR-14 & I-5 split

Vegetation Removal Between SR-14 and Calgrove Bl



Completed vegetation removal between SR-14 and Calgrove Bl

Upcoming Activity, Summer 2022

	WHAT	WHERE	WHEN
1	Center median construction Excavation, drainage work, concrete removal, paving work, barrier work, and sign structure work.	<ul style="list-style-type: none"> I-5 northbound and southbound Weldon Canyon Rd. to Parker Rd 	Anticipated thru 2022
2	Bridge Construction and Shoulder Work Weldon Canyon Bridge, Rye Canyon UC, Castaic Creek Bridge. Grading, paving, and excavation.	<ul style="list-style-type: none"> Weldon Canyon overcrossing Southbound I-5 at Lyons Av I-5 both directions at Calgrove Bl I-5 between Lyons Av and McBean Pkwy (Butte Canyon Bridge) Rye Canyon UC, Castaic Creek Bridge 	Anticipated Summer 2022 – Spring 2023
3	Sound wall and retaining wall construction	<ul style="list-style-type: none"> Southbound I-5 at Hasley Canyon Rd Southbound I-5 (Calgrove Bl - Gavin Canyon undercrossing) Center median at McBean Pkwy 	Anticipated Summer 2022 – Spring 2023



Upcoming Activity, Summer 2022

Weldon Canyon Overcrossing Bridge

Construction of the New Weldon Canyon Overcrossing Bridge:

- Shoring and excavation for bridge abutments and the center median column/bent
- Form, rebar, and concrete work for bridge abutments
- Falsework installation – late-summer 2022



Existing Weldon Canyon Overcrossing bridge



Examples of shoring, excavation, and abutment form construction activities

I-5 Bridge Construction Activity for Future HOV Lanes

Lyons Av and McBean Pkwy (Butte Canyon Bridge)

Summer 2022 Activities

- Center Median & Outside Shoulders
- Concrete removal
- Shoring and excavation
- Rebar and concrete work
- Pile driving



Work zone at Butte Canyon Bridge

I-5 Bridge Construction Activity for Future HOV Lanes

Rye Canyon Undercrossing Bridge

Widening of the I-5 bridge over Rye Canyon Rd

- Vegetation Clearing, concrete removals
- Shoring and excavation for new bridge columns
- Pile driving for the column foundations
- Form, rebar, and concrete work
- Worksite traffic control on Rye Canyon Rd is anticipated



Existing Rye Canyon Undercrossing Bridge



Example of column construction



Example of girder installation

I-5 Bridge Construction Activity for Future HOV Lanes

SR-126 and Hasley Canyon Rd (Castaic Creek Bridge)

Summer 2022 Activities

- Center Median & Outside Shoulders
- Concrete removal
- Shoring and excavation
- Rebar and concrete work
- Pile driving



Work zone at Castaic Creek Bridge



Example of freeway bridge extension



Overhead Sign Removal

Spring – Summer 2022

Locations :

- Southbound I-5 between SR-14 and Weldon Canyon Rd
- Northbound I-5 between Newhall Ranch Rd and Rye Canyon Rd (2 signs)
- Southbound I-5 at Newhall Ranch Rd
 - Temporary signs are placed in lieu of the permanent sign removal
 - Permanent sign will be installed in the future



Existing sign structures that span that full width of the freeway planned to be replaced

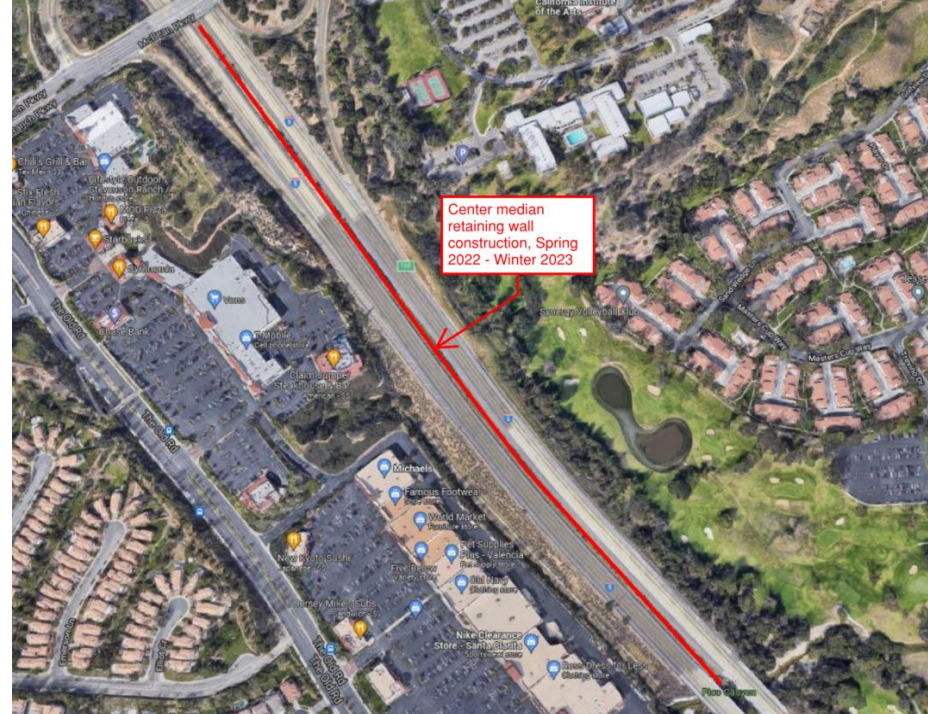
Retaining Wall Locations

Anticipated Spring/Summer 2022

- Southbound I-5 shoulder, Calgrove Bl – Gavin Canyon undercrossing
- Center Median, Lyons Av/Pico Canyon Rd – McBean Pkwy



I-5 shoulder at Calgrove Bl to Gavin Canyon Undercrossing

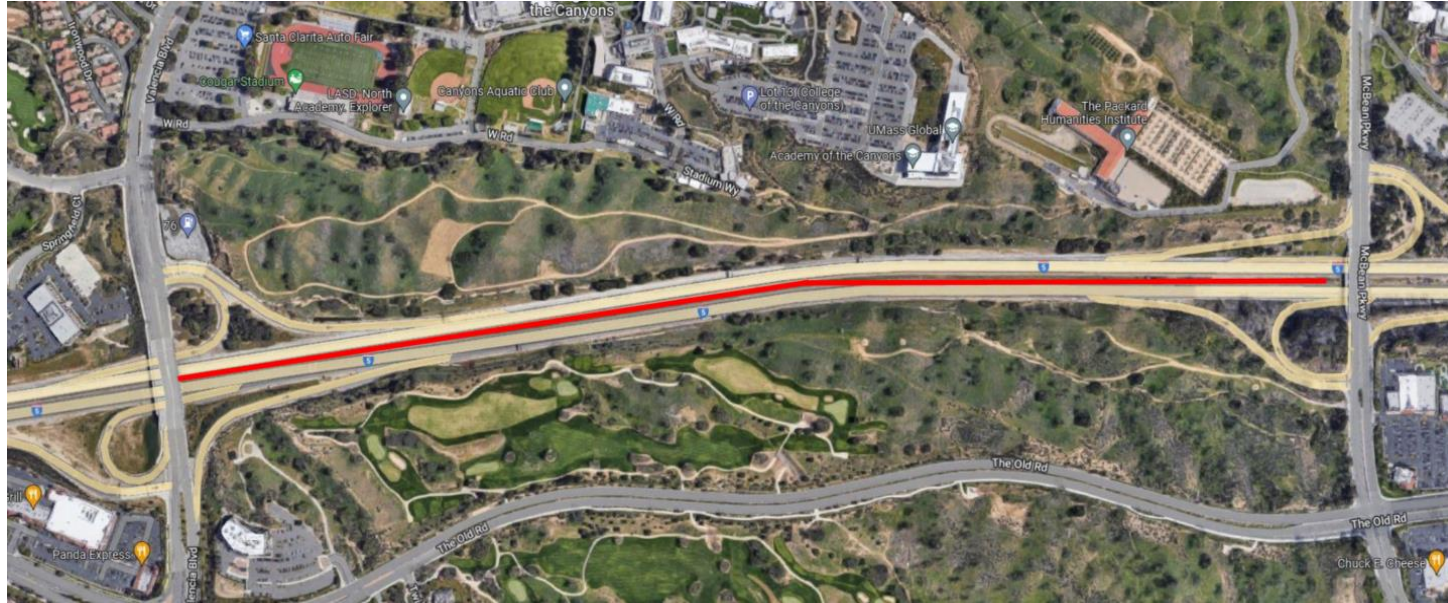


Center median at Lyons Av/Pico Canyon Rd to McBean Pkwy

Retaining Wall Locations

Anticipated Spring/Summer 2022

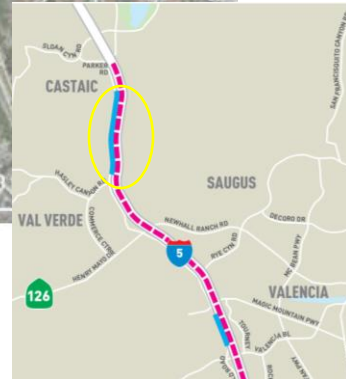
- Center Median, McBean Pkwy to Valencia Bl.
- Upcoming activities: excavation, hauling, rebar/concrete work.



Aerial view of the center median retaining wall construction location represented in red.

Sound Wall Location at Hasley Canyon Rd

Anticipated to Start Summer 2022



Sound Wall Location at Calgrove Bl

Anticipated to Start Summer 2022



Sound Wall Location at McBean Pkwy

Anticipated to Start Late 2023/Early 2024



Sound Wall Location at Valencia Bl.

Anticipated to Start Phase 1, Summer 2022/Phase 2, 2025



Wall Construction Activities



Example of masonry block



Example of retaining wall footing construction



Example of rebar construction

Wall Construction Activities



Steel pile driving



Concrete in drilled hole (CIDH) pile installation

Noise Monitoring and Mitigation

- Noise control plan, administered by a qualified acoustical engineer.
- Noise monitoring, reporting, and mitigation required if noise exceeds Metro/Caltrans criteria.
- Sensitive noise receptors will be used to monitor permitted levels.
- Coordinated response to public complaints.



Controlled bridge demolition using excavators with hydraulic breaker extensions

55 MPH Speed Limit – Corridor Wide

Work Zone Driving Tips

- Stay alert
- Merge early
- Avoid distractions
- Don't speed

Fines are doubled in freeway work zones.



Work zone speed limit signage



I-5 North County Enhancements Project Contacts



Saroya Sandiford,
Community Relations Manager
sandifords@metro.net

Project Hotline



213.922.2772



15enhancements@metro.net



metro.net/i-5-enhancements



Using Zoom & Submitting Questions



Submit your questions by using the Q&A feature



This meeting is being recorded. Video file will be posted on our website at metro.net/i-5-enhancements.



213.922.2772



I5enhancements@metro.net



metro.net/i-5-enhancements