

PROJECT: Metro I-10 ExpressLanes Extension

EVENT: Baldwin Park Walmart

DATE: Thursday, June 2, 2022

SIGN UPS: 1

COMMENTS: 2

SURVEYS: 2

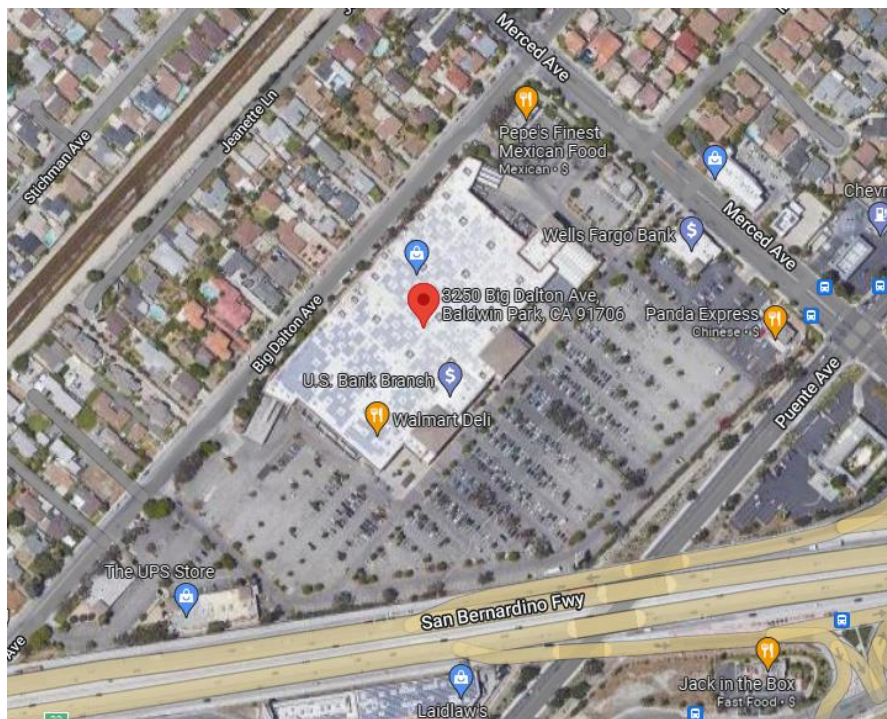
WALK UPS: 13 (no prior knowledge of the project)

FEEDBACK:

- Most stated they will provide comment or complete survey online

LOCATION:

[Walmart Baldwin Park - 3250 Big Dalton Ave, Baldwin Park, CA 91706](https://www.google.com/maps/place/3250+Big+Dalton+Ave,+Baldwin+Park,+CA+91706)



EVENT CONTACT:

Jaime Contreras

(323) 823-0822

Public Engagement



By June 16, 2022

CONTACT US

David Tran, Project Manager
City of Culver City, 10000
Van Antwerp, CA 90230

Non-Residents: David.Tran@cityofculvercity.com
City of Culver City: David.Tran@cityofculvercity.com

www.cityofculvercity.com



Public Scoping Comments Submittal



Official Scoping Period (45 days)
- Started: Monday April 27, 2020
- Ends: Friday June 10, 2020
- Public scoping comments will also be received at public scoping meetings.

Comments are due by June 10, 2020



CONTACT US
Daniel Tava, Project Manager
10000 Wilshire Blvd, 10th Floor
Los Angeles, CA 90024
Box Number: 20000
Cablemail Service
Los Angeles, CA 90024

PROJECT LINKS
- [www.metro.net](#)
- [scoping@metro.net](#)
- [metro.net/scoping](#)



THE CALIFORNIA HIGH-SPEED RAIL PROJECT



Public Hearing Comment Solicitor



Official Hearing Notice
- Starting February 14, 2018
- Public hearing comments will also be collected at public hearing meetings.
Comments are due by June 14, 2018.

CONTACT US
- Contact: Robert Thompson
- Phone: (213) 480-1111
- Email: robert.thompson@metrolink.net
- Website: www.metro.net



A black tablecloth with a large white circle containing the letter 'M' and the word 'Metrolink' partially visible. On the table, there are several brochures, a laptop, and other informational materials.



A smaller poster on a tripod stand, providing additional project details and contact information. It features a map and text similar to the larger sign on the left.