

# Welcome!

*We will begin in a few moments.*

Crenshaw Northern Extension Project Update

June 2022



HOLLYWOOD

# Next stop: key rail connections.

CRENSHAW NORTHERN EXTENSION



# Interpretation Available



## Via Zoom

- Click on the “Interpretation” icon
- Pick the language you would like to listen to (Spanish)
- Spanish translated presentations have been posted in the chat

## Interpretacion en espanol (Via Zoom)

- Haga click en el icono – “interpretacion”
- Escoja la opcion para escuchar en espanol
- El enlace a la presentacion en espanol esta disponible en el “chat”

# Code of Conduct

**Metro is committed to ensuring that all participants can fairly and clearly share ideas, comments and concerns about this project. To provide a safe and equitable process, we are asking for your help. During this meeting, please:**

- > Respect the format of the meeting. We want to provide an opportunity for everyone to ask written questions and provide comments
- > Treat fellow community members, agency representatives, Metro staff and others with respect

- > Address all comments to Metro staff and consultants – not to other attendees

Metro is committed to ensuring that all participants can fairly and clearly share ideas, questions, comments, and concerns about this project.

# Housekeeping

**Today's meeting is being recorded.**



Attendee cameras are off and microphones are muted.



And comments can be submitted using the Q&A function. Written questions will be responded to following the presentation.



For technical support, call or text 213.276.6008

HOLLYWOOD

# Next stop: key rail connections.

CRENSHAW NORTHERN EXTENSION

Project Update  
June 2022



# Agenda

## > **Presentation**

- Project Overview
- What We Heard During Scoping
- Project Updates
- Station Planning

## > **Public Comment/Questions**

# Project Status and Schedule

## Where We Are:

- Gathering input from community and stakeholders
- Studying engineering feasibility and constructability
- Planning stations and station entrances



## ONGOING PUBLIC PARTICIPATION

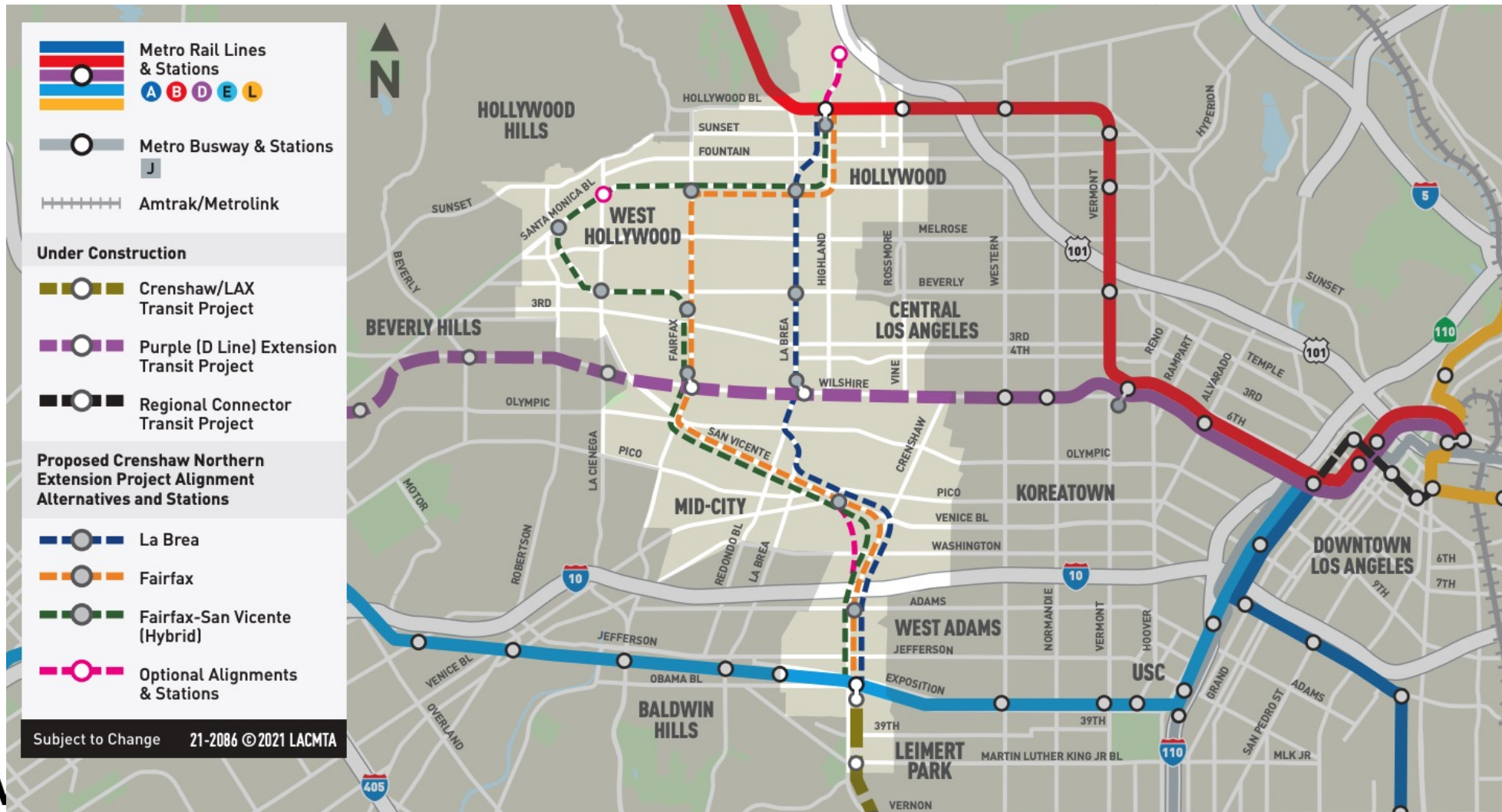
**\*Potential Project Acceleration** through Metro's Measure M Early Project Delivery Strategy, including identification of additional funding sources and financing strategies

# Project Overview

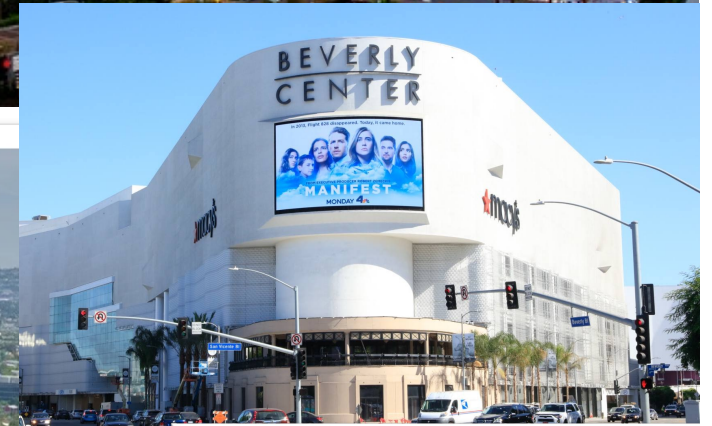
- Extends the Crenshaw/LAX Line north to close the regional rail transit gap
- Connects 4 Metro Rail lines and 5 of county's busiest bus lines
- Serves major employment and activity centers
- Connects underserved communities
- Approx. 90,000 daily boardings projected
- Measure M Funding: \$2.24 Billion (2041-47)



# Project Map with Alternatives – Scoping 2021



# Major Activity Centers and Destinations



# Travel Time Comparisons

<b>Between</b>	<b>And</b>	<b>Auto</b>	<b>Transit - WITHOUT Project</b>	<b>Transit – WITH Project</b>
Hollywood	LAX (Metro Connector)	<b>40-80</b>	<b>55-90</b>	<b>32-40</b>
Hollywood	West Adams	<b>20-45</b>	<b>40-65</b>	<b>10-18</b>
Hollywood	Downtown Inglewood	<b>28-75</b>	<b>65-90</b>	<b>27-35</b>
Hollywood	Cedars-Sinai*	<b>14-35</b>	<b>30-45</b>	<b>8</b>
West Adams	Westwood	<b>26-65</b>	<b>55-70</b>	<b>19-20</b>
West Adams	Cedars Sinai*	<b>16-40</b>	<b>40-55</b>	<b>10</b>
Leimert Park	Downtown Beverly Hills	<b>24-65</b>	<b>55-65</b>	<b>21-22</b>
Leimert Park	Westwood	<b>30-65</b>	<b>60-75</b>	<b>25-26</b>
Leimert Park	Grove/CBS*	<b>20-55</b>	<b>50-65</b>	<b>17</b>
LAX (Metro Connector)	Miracle Mile	<b>25-65</b>	<b>60-80</b>	<b>27-29</b>
LAX (Metro Connector)	Grove/CBS*	<b>28-65</b>	<b>60-75</b>	<b>31</b>
Downtown Culver City	Hollywood	<b>24-55</b>	<b>55-70</b>	<b>24-32</b>
Downtown Inglewood	Miracle Mile	<b>20-60</b>	<b>50-70</b>	<b>22-27</b>
LAX (Metro Connector)	West Hollywood Park*	<b>30-70</b>	<b>80-100</b>	<b>34</b>

# Environmental Scoping

## Draft EIR Scoping Period - Spring 2021:

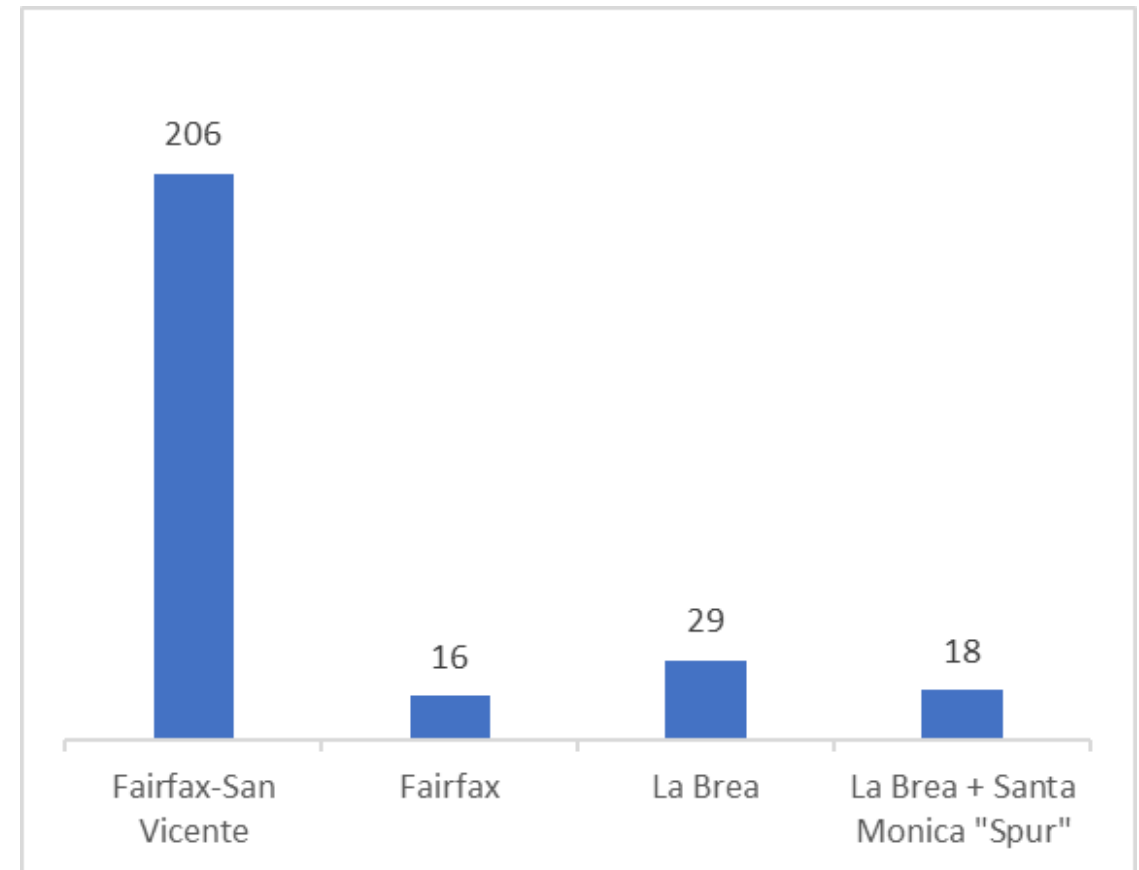
- Three virtual scoping meetings with over 400 attendees
- Outreach to and participation by public agencies and Community Based Organizations (CBOs)
- 600+ comments submitted



# What We Heard During Scoping

- Strong support for project and acceleration
- Desire to serve major job centers and opportunities along western routes
- Support for extending project north to serve the Hollywood Bowl
- Trade-offs between fastest travel time (Mid City to Hollywood) and serving major activity centers
- Concerns around above-ground option along San Vicente Blvd

## Alternative/Route Preferences



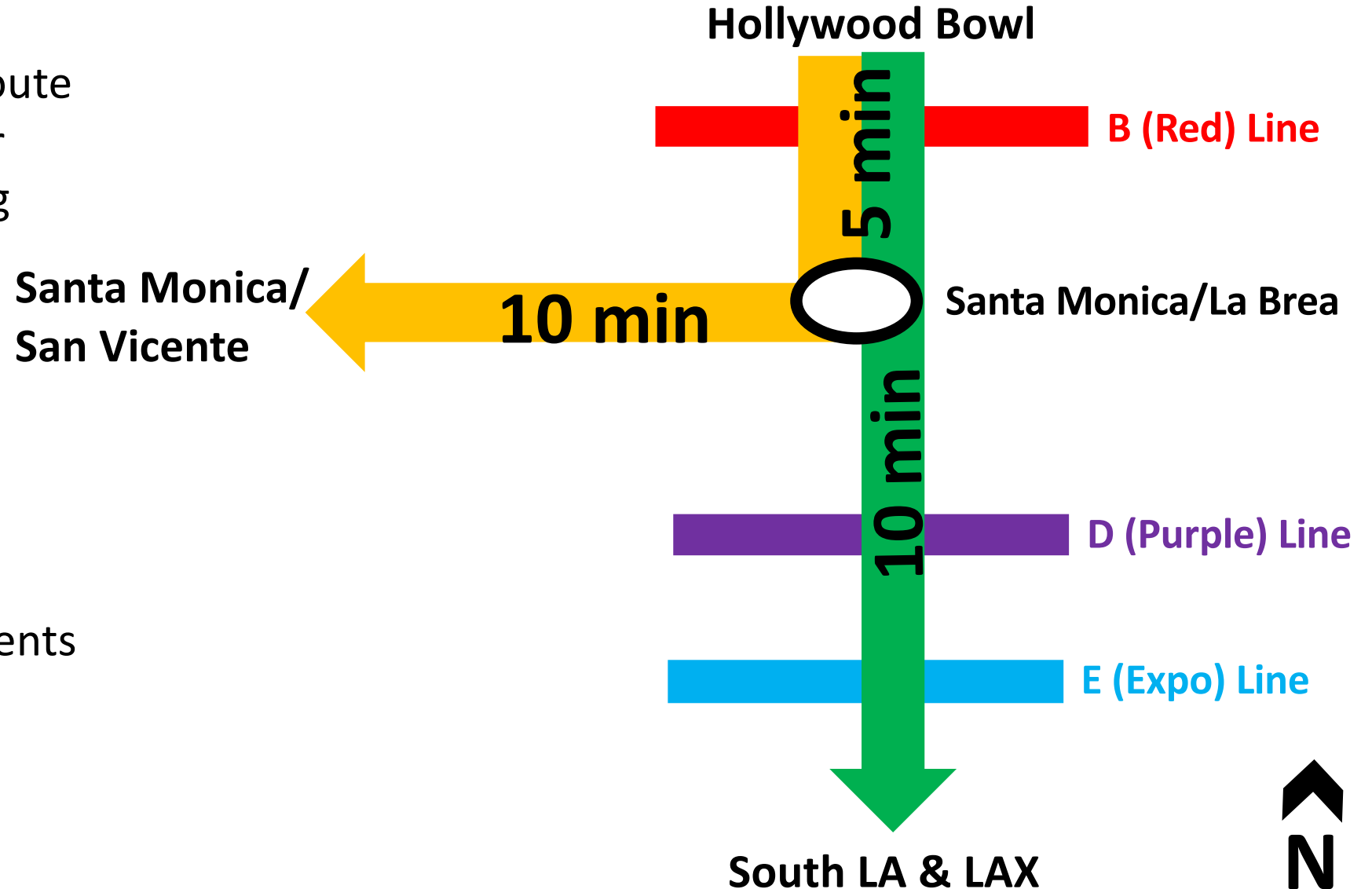
# La Brea/Santa Monica Blvd "Spur" Concept

## Concept:

Build both the La Brea route plus a separate "spur" or branched line west along Santa Monica Blvd

## Major Challenges:

- Connectivity
- Operations
- Constructability
- Maintenance yard
- Measure M commitments and project funding



# Refinements/Updates Following Scoping

- **Hollywood Bowl Optional Station:** continue to study
- **San Vicente Above Ground Option:** will no longer study due to cost analysis and potential impacts (construction, operations, mobility, etc.)
- **Santa Monica/La Cienega Optional Station:** dismissed in favor of a single station serving Santa Monica Blvd between San Vicente and La Cienega Blvd
- **Santa Monica Bl Spur Concept:** dismissed due to operational challenges, cost/funding, and Measure M commitments

Post-Scoping Alternatives Refinement Memorandum is posted on Metro website at: [www.metro.net/crenshawnorth](http://www.metro.net/crenshawnorth)



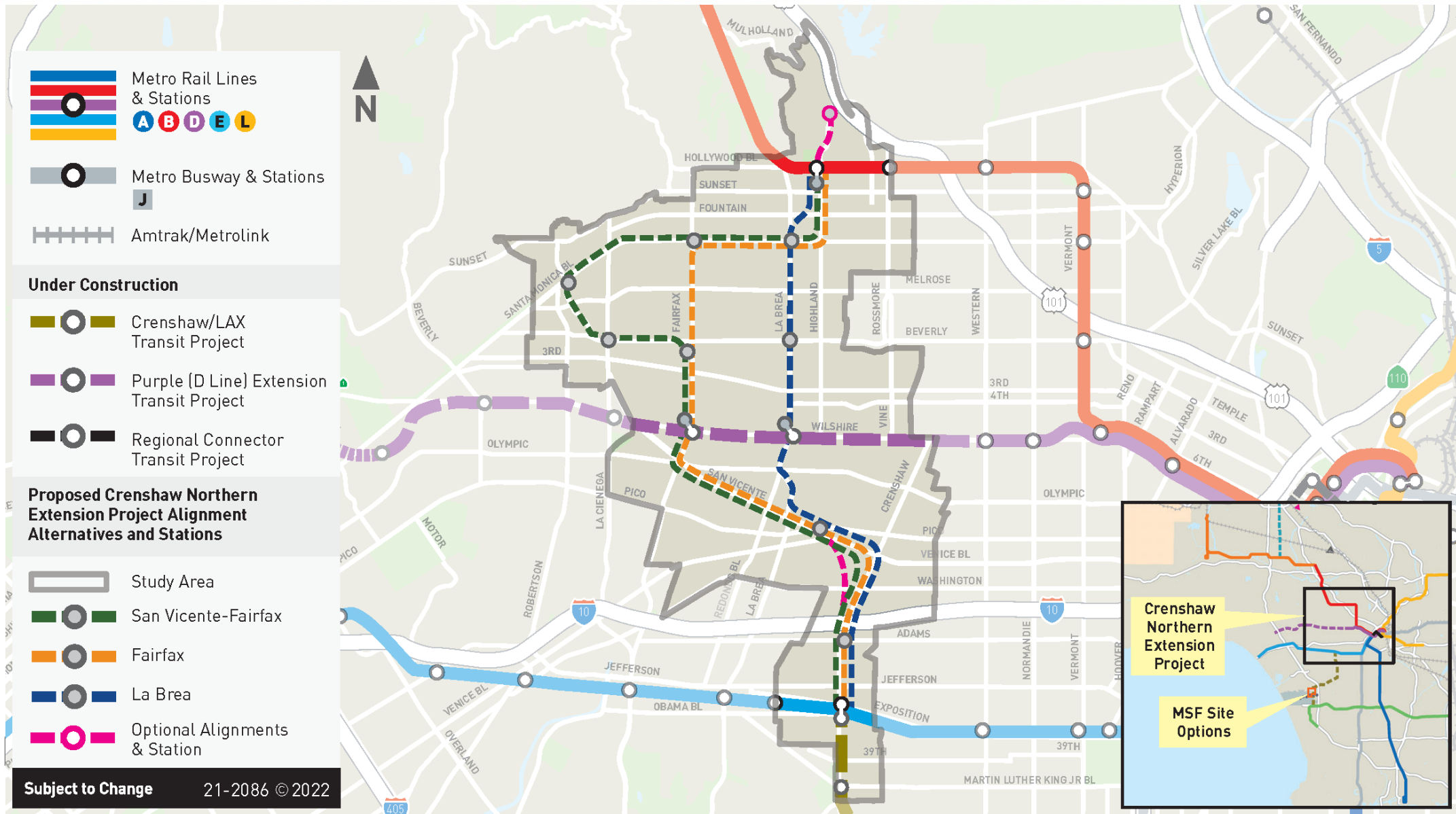
# Summary of Alternatives

Alternative	Approx. Distance Expo/E to Red/B	# New Stations*	Approx. Travel Time – Expo/E to Red/B
La Brea	6 miles	7	13 minutes
Fairfax	8 miles	8	16 minutes
San Vicente- Fairfax	10 miles	10	20 minutes

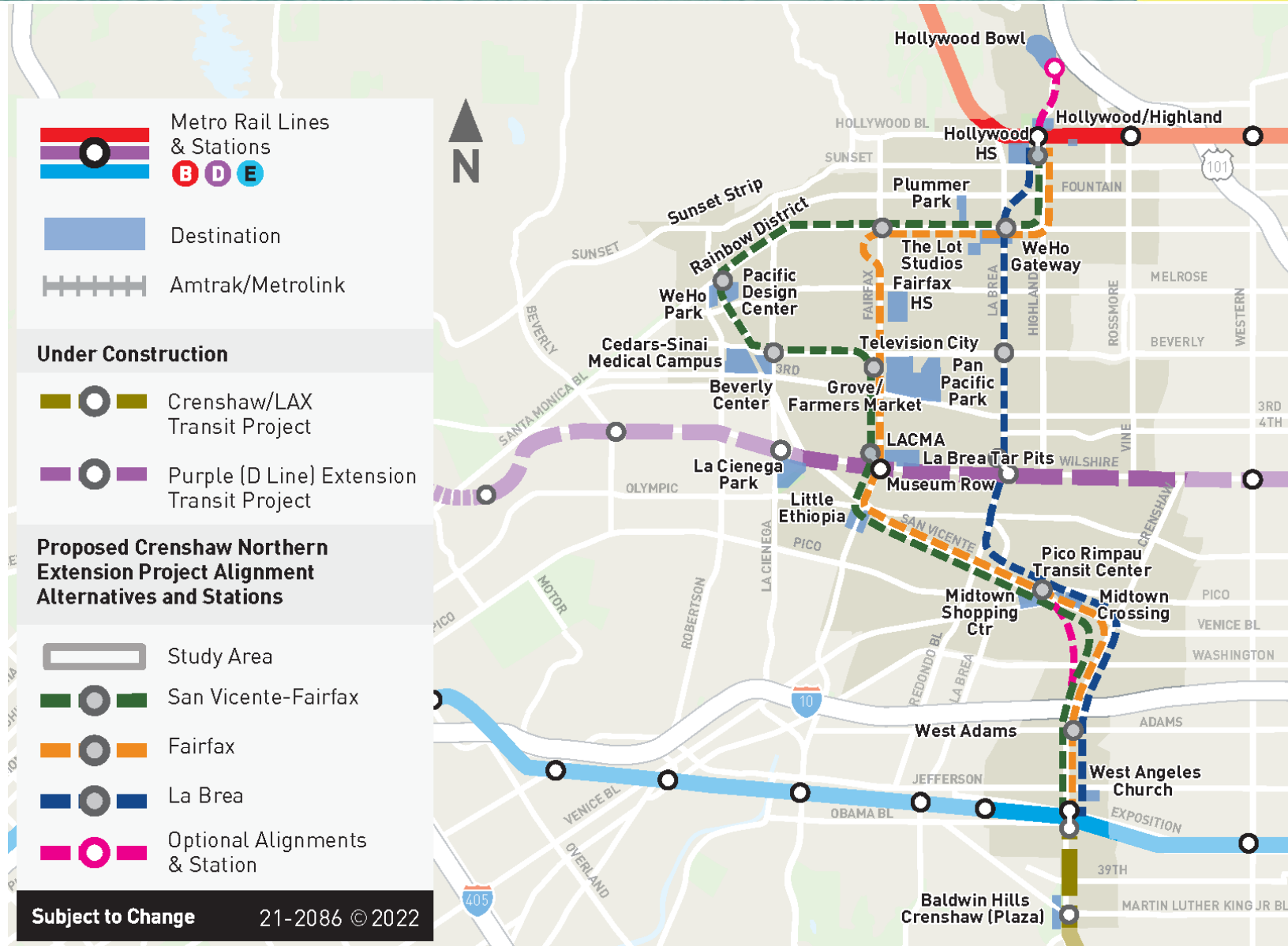
*\*includes optional Hollywood Bowl station*



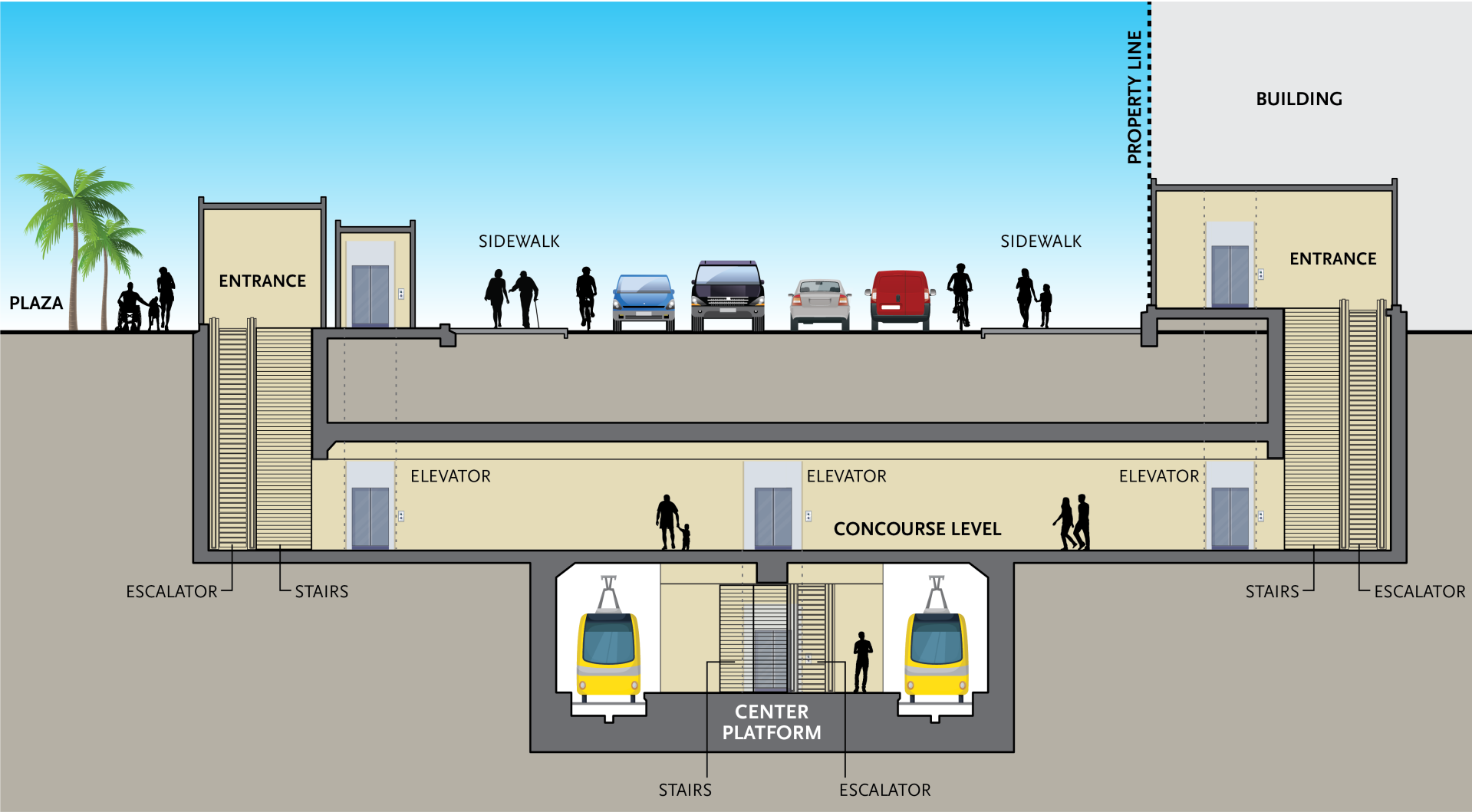
# Updated Project Map



# Major Destinations in the Project Area



# Station Planning and Access



# Types of Station Entrances



Wilshire/Western (D/Purple Line)



Sunset/Vermont (B/Red Line)

# Types of Station Entrances



1st/Soto (L/Gold Line)



North Hollywood (B/Red Line)



# Types of Station Entrances



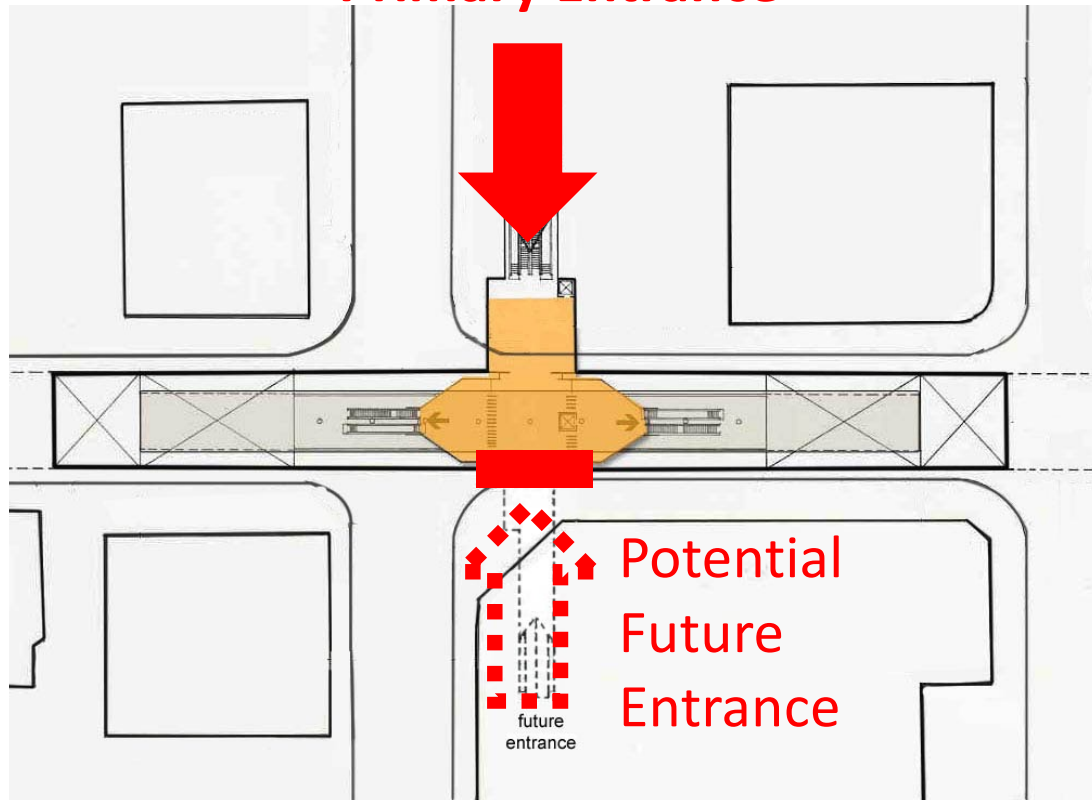
7th St/Metro Center  
(Integrated into historic building)



Wilshire/Vermont  
(Metro Joint Development Project)

# Planning for Future Entrances

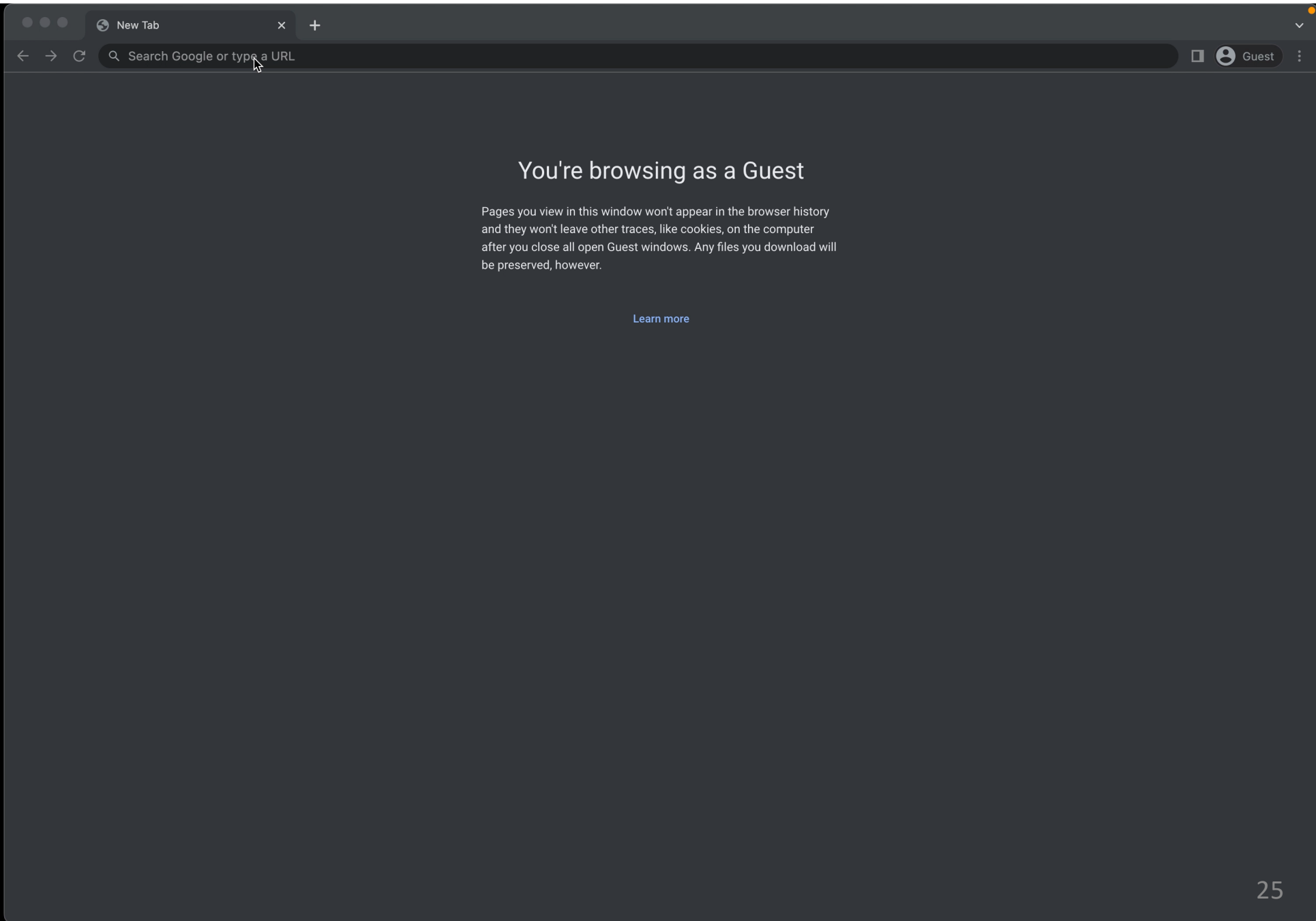
Primary Entrance



Knock-out-panel (KOP)



New station entrance at 7th Street/Metro Center Station using knock-out-panel (KOP) <sup>24</sup>



## You're browsing as a Guest

Pages you view in this window won't appear in the browser history and they won't leave other traces, like cookies, on the computer after you close all open Guest windows. Any files you download will be preserved, however.

[Learn more](#)

# Q&A

- During the meeting, comments can be submitted using the Q&A icon.
- We will answer as many questions as we can, focusing on questions that are of broadest interest
- Your question will appear publicly as it's being answered live or responded to in writing in the Q&A box
- If you have difficulties with the Zoom Q&A, please call or text 213.276.6008
- Dial-in users, please text your questions to 213.276.6008

# We want to hear from you...

**Send your comments and questions to [crenshawnorth@metro.net](mailto:crenshawnorth@metro.net)**



Attendee cameras are off and microphones are muted.



And comments can be submitted using the Q&A function. Written questions will be responded to following the presentation.



For technical support, call or text 213.276.6008

# What's Next

- > Gathering input on stations through StoryMap website
- > Continue to engage with stakeholders and the community
- > Further refine alternatives, stations, and potential station entrance locations
- > Develop updated ridership projections and cost estimates
- > Prepare the Draft Environmental Impact Report (DEIR)

## Stay connected to the project



Roger Martin, *Project Manager*  
Metro  
One Gateway Plaza, MS 99-22-6  
Los Angeles, CA 90012



213.418.3093



*CrenshawNorth@metro.net*



*metro.net/CrenshawNorth*



*@metrolosangeles*



*losangelesmetro*