

PROJECT: Metro I-10 ExpressLanes Extension

EVENT: Baldwin Park Walmart

DATE: Thursday, May 26, 2022

SIGN UPS: 0

COMMENTS: 3

SURVEYS: 2

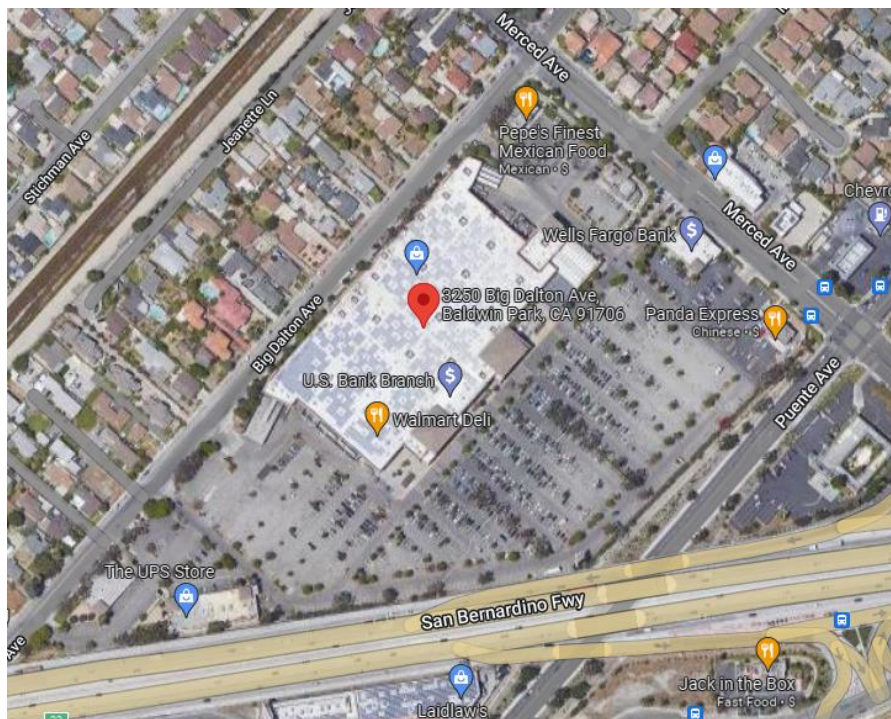
WALK UPS: 23 (no prior knowledge of the project)

FEEDBACK:

- Most stated they will provide comment online

LOCATION:

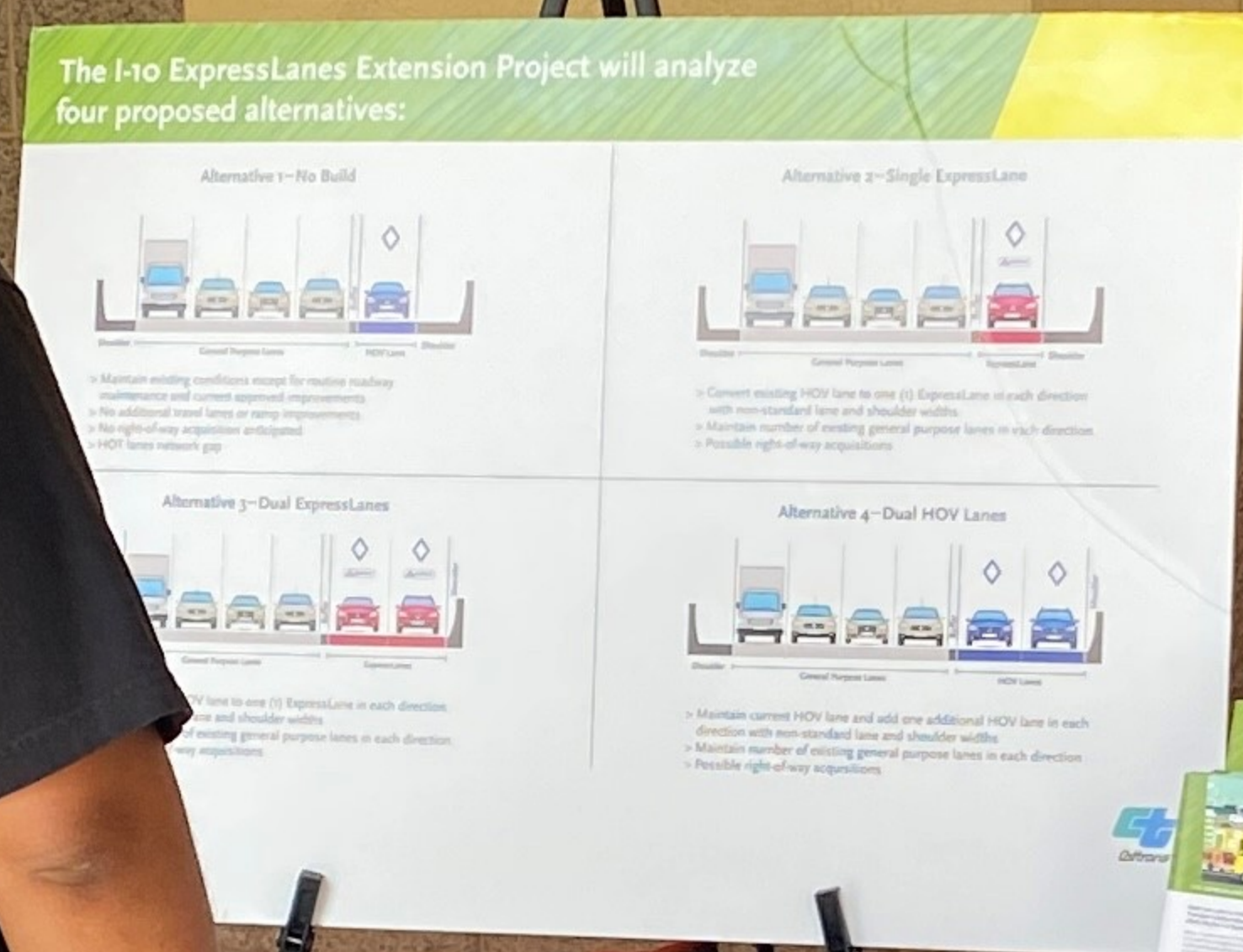
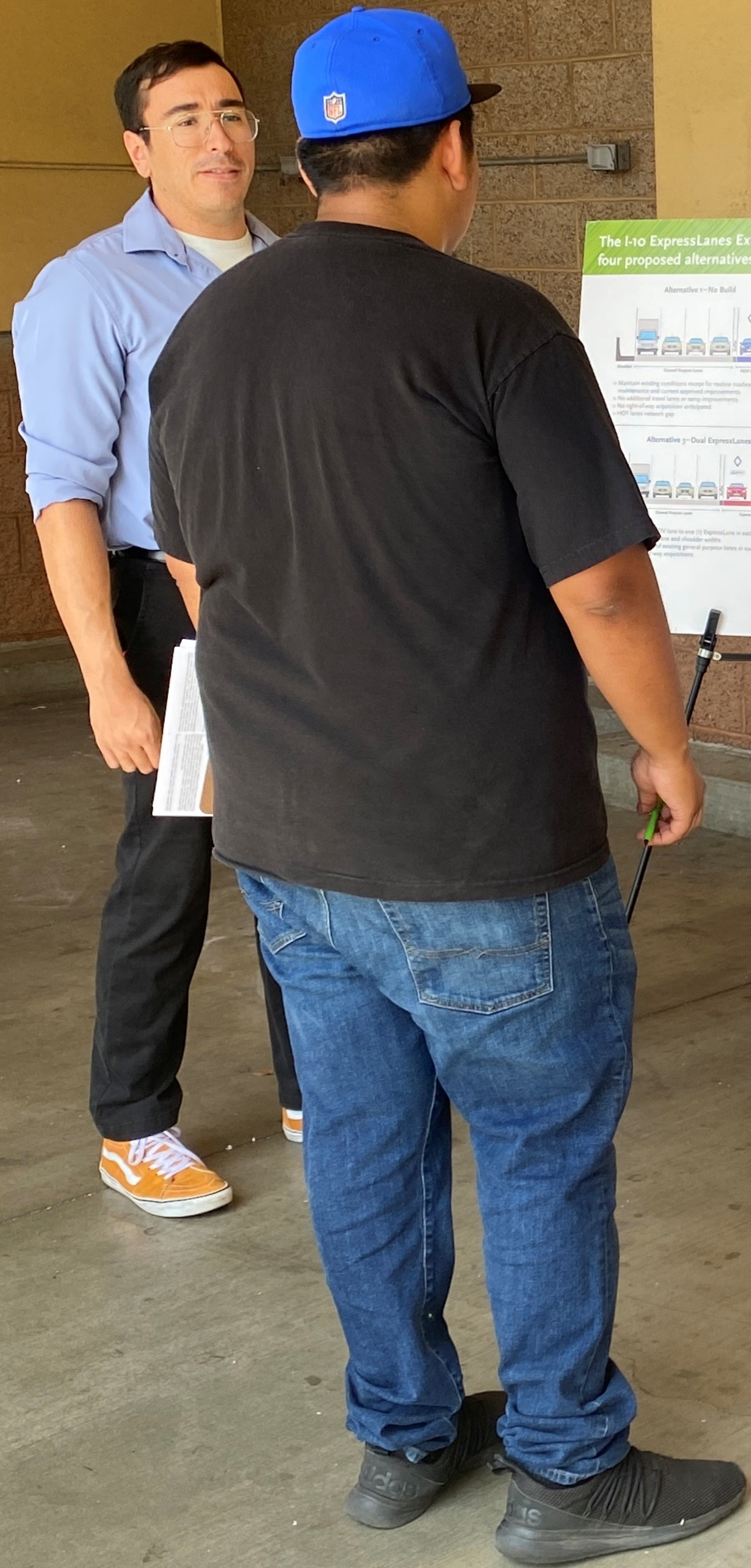
[Walmart Baldwin Park - 3250 Big Dalton Ave, Baldwin Park, CA 91706](https://www.google.com/maps/place/3250+Big+Dalton+Ave,+Baldwin+Park,+CA+91706)



EVENT CONTACT:

Jaime Contreras

(323) 823-0822



M
Metro

Metro

Informational materials on the table include:

- QR code cards for the I-10 ExpressLanes Extension Project.
- Brochures with the Metro logo and project information.
- A water bottle with the "ROGUE" logo.
- A black trash can.
- Other project-related documents.

Official Scoping

- > Started: Monday, June 10, 2025
- > Ends: Friday, June 13, 2025
- > Public scoping comments received at public meetings.

Comments are due by Friday, June 13, 2025.

M Metro



The I-10 ExpressLanes Extension Project will analyze four proposed alternatives:

Alternative 1 - No Build No new lanes are added. Existing lanes remain in their current configuration.	Alternative 2 - Single ExpressLane A single 3.5-foot wide ExpressLane is added to the right side of the existing 10-foot wide lanes.
Alternative 3 - Dual ExpressLanes Two 3.5-foot wide ExpressLanes are added to the right side of the existing 10-foot wide lanes.	Alternative 4 - Dual HOV Lanes Two 3.5-foot wide HOV lanes are added to the right side of the existing 10-foot wide lanes.

M Metro

M Metro

Metro®

Public meeting materials including brochures and QR codes on a table covered with a Metro-branded black cloth.

Public Scoping Comment Submittal

Corridor Cities Include: Baldwin Park, El Monte, West Covina, City of Industry, Covina, San Dimas, Walnut, Pomona, Claremont, Montclair, Unincorporated LA County

Official Scoping Period (45 days)
> Started: Monday, April 25, 2022
> Ends: Friday, June 20, 2022
> Public scoping comments will also be received at public scoping meetings

Comments are due by June 10, 2022

CONTACT US
Daniel Tran, Project Manager
Metro
One Gateway Plaza, MS 99-11-1
Los Angeles, CA 90012
Ron Kosinski, Deputy District Director
Caltrans District 7
100 S Main St, MS 16A
Los Angeles, CA 90012
213.922.2110
i10extension@metro.net
metro.net/i10extension

M Metro **Caltrans**

I-10 EXPRESSLANES EXTENSION