

# Next stop: more rail.

## CRENSHAW/LAX TRANSIT PROJECT



Virtual Community Leadership Council Meeting

May 19, 2022 | 6 PM



# Thank you, Community Leadership Council!



# Welcome, thank you for joining us!

5 min	Welcome	<b>Arna Fulcher</b> , CLC Co-Chair
10 min	Introductions & Metro News K Line Project Overview	<b>Ginny Brideau</b> , Community Relations Manager
25 min	K Line Project Update & Station Art Tour	<b>Raymond Acevedo</b> , Community Relations Officer, Southern Segment <b>Ron Macias</b> , Principal Community Relations Officer, Northern Segment <b>Erik Qvale</b> , Manager, Creative Services
20 min	Metro Photo Enforcement Program / Q&A	<b>Raymond Acevedo</b> , Community Relations Officer
5 min	Business Solution Center & Business Interruption Fund	<b>Eric Chun</b> , Representative, Small Business Economic Resources
5 min	Eat Shop Play Program	<b>Jesus Galeno</b> , Transportation Associate
5 min	Rail Safety & Mobility Programs	<b>Jacqueline Gonzalez</b> , Manager, Community Relations
20 min	Moderation / Q&A	<b>Stephanie Leslie</b> , Deputy Executive Officer <b>Ginny Brideau</b> , Community Relations Manager <b>Abdul Zohbi</b> , Systems Safety Manager <b>Ed Tiedje</b> , Redflex Director

# Discounted Fares/LIFE Program

## Tap into savings.

A little help can go a long way. So we've made it easier to enroll in Metro's LIFE Program. Sign up now and get 90 days of free rides.

Visit [metro.net/life](https://metro.net/life) to get started.



Fare collection has resumed. When riding, please have your fare ready.



### LIFE Program Overview

The LIFE (Low-Income Fare is Easy) Program helps qualifying LA County residents save on paying their fares. Once you're in the program, you can purchase discounted passes or load free regional rides with your TAP card.

#### To save on Metro fares

Metro Fare Product	LIFE Discount	Final Cost	LIFE Price with Metro Promo (valid 12/15/21 to 7/30/22)
20 Regional Rides: Base fare only. Interagency transfers are additional cost.	Free	\$0	
Regular 30-Day/Monthly Pass	\$24	\$76	\$26
Regular 7-Day/Weekly Pass (up to four/month)	\$6	\$19	\$6.50
Senior/Disabled 30-Day/Monthly Pass	\$8	\$12	
College/Vocational 30-Day/Monthly Pass	\$13	\$30	
Student K-12 30-Day/Monthly Pass	\$10	\$14	
Regular EZ Monthly Pass	\$24	\$86	
Senior/Disabled EZ Monthly Pass	\$8	\$34	

#### To qualify

The figures below are valid from July 1, 2021, to June 30, 2022.

Household Size	Annual Income
1	\$41,400 or less
2	\$47,300 or less
3	\$53,200 or less
4	\$59,100 or less
5	\$63,850 or less
6	\$68,600 or less

#### Where to get an application

- > Download at [metro.net/life](https://metro.net/life)
- > FAME Assistance Corporation (FAC) or International Institute of Los Angeles (IILA)
- > Metro Customer Centers and Big Blue Bus location, Blue: The Transit Store

#### How to apply

- Apply online at [taptogo.net/applyforlife](https://taptogo.net/applyforlife) or submit your completed application:
- > By email, mail or in-person at FAME or IILA
  - > At Metro Customer Centers and Big Blue Bus location, Blue: The Transit Store
- To complete your application, please have the following:
- > Photo ID for all applicants
  - > You have the option to self-certify or provide proof of income, such as:
    - Medi-Cal, EBT, any proof of public benefit, Social Security award, check stub or tax return
    - Or
    - Complete Self-Certification in Section 3 of the application.

#### To use your LIFE benefits

- Ways to purchase your discounted pass or load 20 free rides:
- > By phone at 866.827.8646
  - > Online at [taptogo.net](https://taptogo.net)
  - > In-person at a TAP vendor location, visit [taptogo.net/vendors](https://taptogo.net/vendors)

Additional transit systems participating in the LIFE program:



#### Do I contact FAME or IILA?

If you live in:	Contact
Antelope Valley	FAME
Central Los Angeles	FAME
Gateway Cities	IILA
San Fernando Valley	FAME
San Gabriel Valley	IILA
Santa Clarita	FAME
South Bay	FAME
Westside Cities	FAME

**International Institute of Los Angeles (IILA)**  
 3800 La Crescenta Av  
 Suite #207  
 Glendale, CA 91214  
 818.244.2550  
[lifefinfo@ilosangeles.org](mailto:lifefinfo@ilosangeles.org)  
 Learn more at [ilosangeles.org](https://ilosangeles.org)

**FAME Assistance Corporation (FAC)**  
 1968 W Adams Bl  
 Los Angeles, CA 90018  
 323.870.8567  
[lifefinfo@famecorporations.org](mailto:lifefinfo@famecorporations.org)  
 Learn more at [famecorporations.org](https://famecorporations.org)

# Using Zoom & Submitting Questions



This meeting is being recorded. Video file will be posted on our web site at **[metro.net/crenshaw](https://metro.net/crenshaw)**



Public video and mics are disabled. We cannot hear you or see you.



Please ask questions and submit comments via the Q&A feature.





# K Line Substantial Completion

March 2022

- K Line achieved substantial completion for two-thirds of the alignment, from the C Line to 48<sup>th</sup> St./Crenshaw Bl.
- Metro has begun pre-revenue testing activities including training operations and maintenance staff
- Over the next couple of months, WSSS is expected to turn over to Metro the remaining segment along Crenshaw Bl.



# K Line Initial Operating Segment

- Due to construction of AMC, the K Line will open an initial operating segment with seven stations operating between Expo/Crenshaw to Westchester/Veterans Stations.
- A bus service will link the K Line at Westchester/Veterans Station to the C Line at Aviation/LAX Station.
- The new Aviation/Century Station will not be served by trains or bus service until full line operations begin in early 2024 once the AMC Station platform structure has been completed.



# Aviation/Century Station

Aviation Bl at Century Bl



Station canopy and station plaza under construction



Station platform under construction



Elevator under construction

# Aviation/Century Station

Aviation Bl at Century Bl



Station platform and signage



Station plaza



TVM, map casings, and fare gates

# Westchester/Veterans Station

Florence Av and Hindry Av



Split-platform station under construction



TVM canopy under construction



Station platform under construction

# Westchester/Veterans Station

Florence Av at Hindry Av



TVM canopy, Overhead Catenary System (OCS), railway track, and signage



Platform entrance and Ticket Vending Machine



Station platform, signage, and artwork

# Downtown Inglewood Station

Florence Av and La Brea Av



Station platform and plaza under construction



TVM canopy under construction



Bus Transfer Facility under construction

# Downtown Inglewood Station

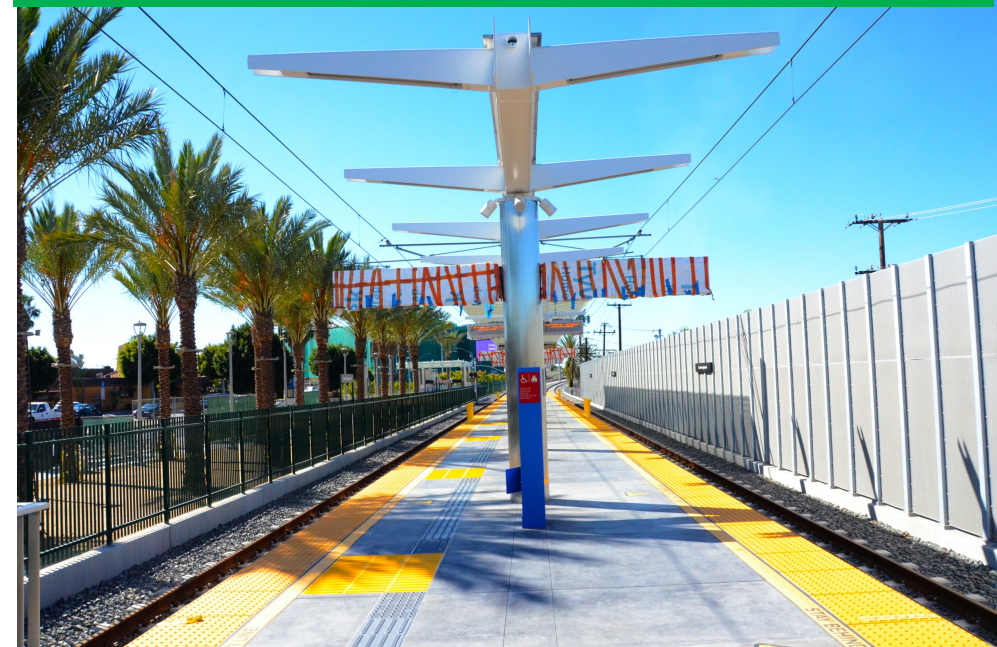
Florence Av at La Brea Av to Hillcrest Bl



Station pylon, TVM canopy, and plaza



Station entrance and turnstiles



Station platform and installed signage

# Fairview Heights Station

West Bl and Redondo Bl



Station parking lot and TVM canopy under construction



Station platform under construction



Station parking lot under construction

# Fairview Heights Station

West Bl at Redondo Bl



Ticket Vending Machine Canopy and bike locker



TVM canopy at western end of station



Station platform, benches, and bollards

# Fairview Heights Station Parking Lot

Redondo Bl and West Bl

## Background

- In 2016, Metro pursued the acquisition of four buildings across the street from the Fairview Heights Station in order to meet its environmentally cleared number of parking spaces

## Pre-Construction activities began March 2022:

- Abatement and demolition of four two-story structures
- Excavation of material onsite to rough grade
- Installation of stormwater drainage system

## Future construction activities to be performed:

- Construction of a parking lot
- 119 parking spaces



# Fairview Heights Station Parking Lot

Redondo Bl and West Bl

## What to expect:

- Impacts to local traffic
- Noise and dust
- Partial sidewalk closure

## Mitigation measures:

- Vehicular detours
- Pedestrian detours
- Sound blankets
- Water trucks
- Street sweeper

## Outreach activities began February 2022:

- Construction Notices
- Project Stakeholder E-newsletter
- Social Media including NextDoor, Facebook, website
- Community Meetings and Key Stakeholder Briefings



# Abatement Activities

Redondo BI and West BI



Abatement of roofing material



LACFD performing trainings



Workers removing glue that held flooring

# Hyde Park Underground Tunnel – 60th St to 67th St



Underground portal toward tunnel



Underground tunnel



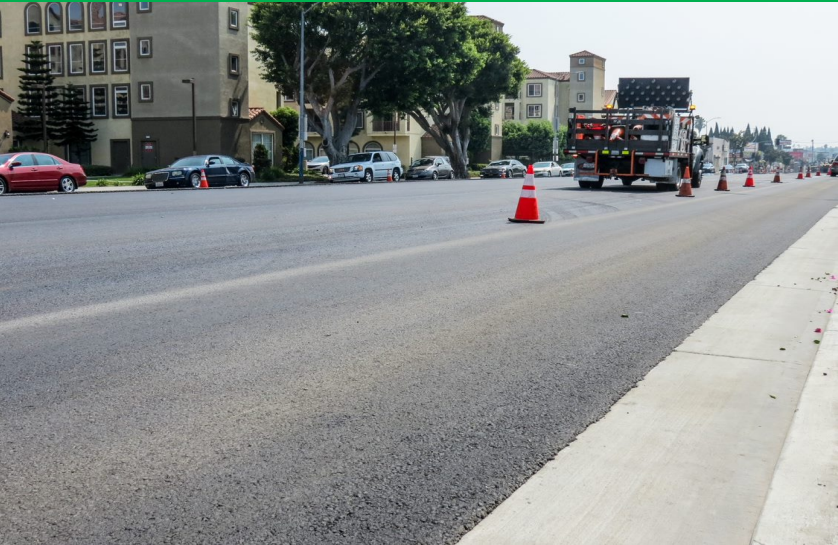
# Hyde Park Underground Tunnel – 60th St to 67th St Tunnel Construction



# Hyde Park Underground Tunnel – 60th St to 67th St



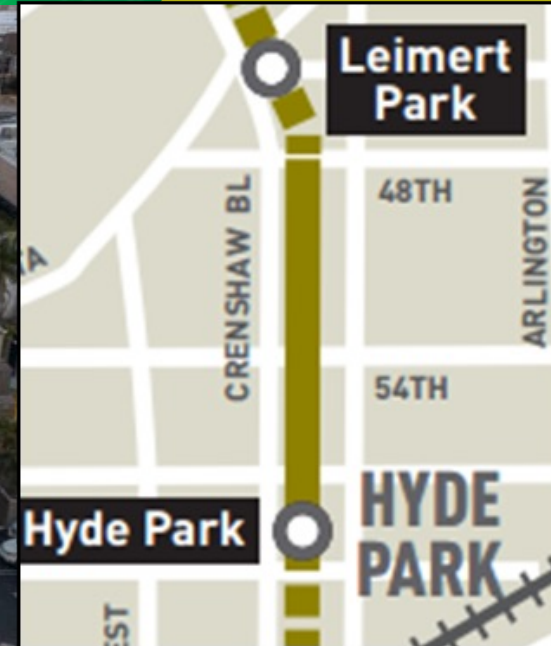
Crenshaw street restoration work



Completed Crenshaw street restoration

# Hyde Park Station

Crenshaw Bl and Slauson Av



Aerial view of station

# Hyde Park Station

## Station Construction



# Hyde Park Station



Station platform at Crenshaw Bl near 58th St



Restored and paved street of Crenshaw Bl near station



# Leimert Park Station

Crenshaw Bl and Vernon Av



Aerial view of station plaza

# Leimert Park Station Area

Crenshaw Bl and Vernon Av



Backfill and decking removal operation at station area

Removal of steel beams during backfilling operation



# Leimert Park Station



Train portal between Leimert Park Station and 48th St



Concourse level frame and rebar installation



Tier level 2 bracing

# Leimert Park Station



Concourse level and fare gates



Station entrance



Station platform

# Underground Tunnel



# Underground Tunnel



Underground tunnel under construction



# “Harriet” - Tunnel Boring Machine (TBM)



# Martin Luther King Jr Station

## Crenshaw Bl and King Bl



Aerial view of station plaza

# Martin Luther King Jr Station



Excavated underground station



Concrete placement for concourse deck



Station plaza construction

Rebar installation for elevator shaft



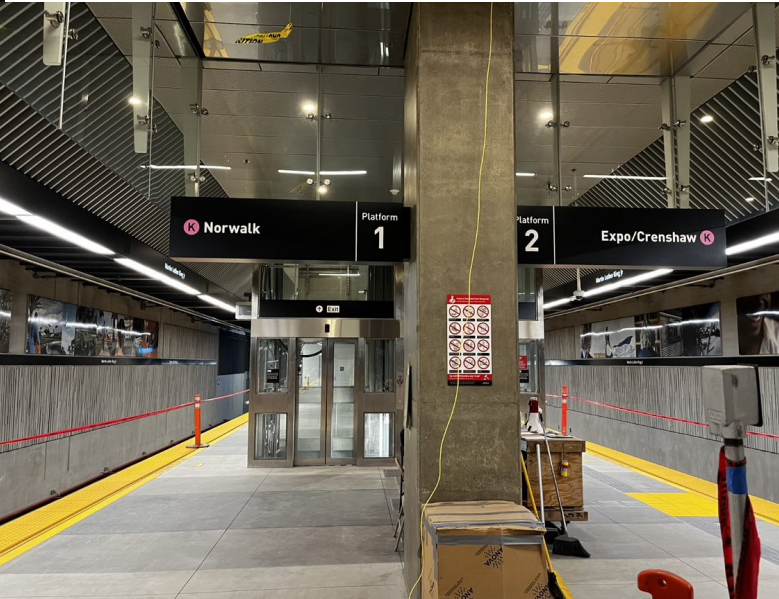
# Martin Luther King Jr Station



Escalators and stairway from station plaza



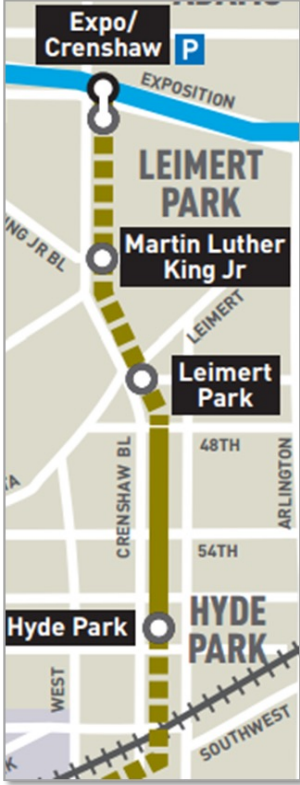
Station plaza



Station platform

# Expo/Crenshaw Station

## Crenshaw Bl and Exposition Bl



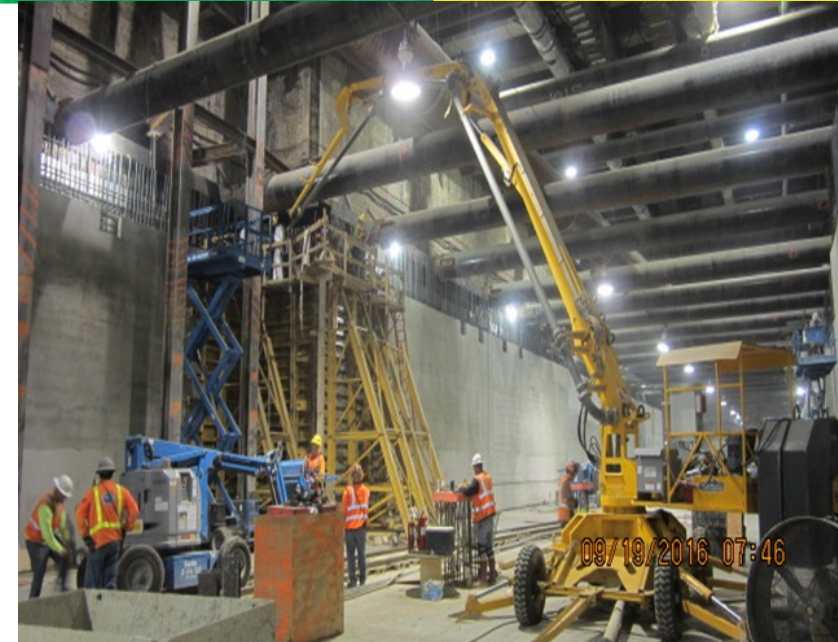
Aerial view of station plaza

# Expo/Crenshaw Station Area



Station backfill and decking removal operation

Street restoration of Crenshaw Bl



East wall construction

# Expo/Crenshaw Station Area



Station plaza area



Street restoration at Crenshaw Bl and Obama Bl

# Train Systems Testing

## Metro to continue systems testing

- Testing and training for operations and maintenance staff
- Local Field Acceptance Test (LFAT)
- System Integration Test (SIT)
- Grade Crossing testing



Fire life safety testing for smoke alarms at Leimert Park Station

# Emergency Response Exercises

- Series of emergency drills along project alignment
- Preparation and testing for emergency scenarios
- Emergency response personnel and actors involved
- Exercises performed May 20 – June 30, 2022
- Impacts:
  - Short term street closures
  - Sounds from sirens and machinery
  - Artificial/simulated smoke



Scenario testing for the emergency ventilation fan flow switch sensors

# Upcoming Work Activities

## Additional remaining minor work activities:

- Waterline/fire hydrant relocations
- Street paving at some locations
- Guard rail installation
- Left-turn gates installation

\*These work activities will not impact the opening of the transit line.



Sacking and patching rail vehicle pads along southbound track

# Art Program Tour



# SHERIN GUIRGUIS | *Rise* | Aviation/Century Station



# SHERIN GUIRGUIS | *Rise* | Aviation/Century Station



# SHERIN GUIRGUIS | *Rise* | Aviation/Century Station



# GEOFF MCFETRIDGE | *Us as a Measure of Openness* | Westchester Veterans Station



# GEOFF MCFETRIDGE | *Us as a Measure of Openness* | Westchester Veterans Station



# KENTURAH DAVIS | *Sonder* | Downtown Inglewood Station



# KENTURAH DAVIS | *Sonder* | Downtown Inglewood Station



# KIM SCHOENSTADT | *Inglewood CA Series: Metro Collection 1-10* | Fairview Heights Station



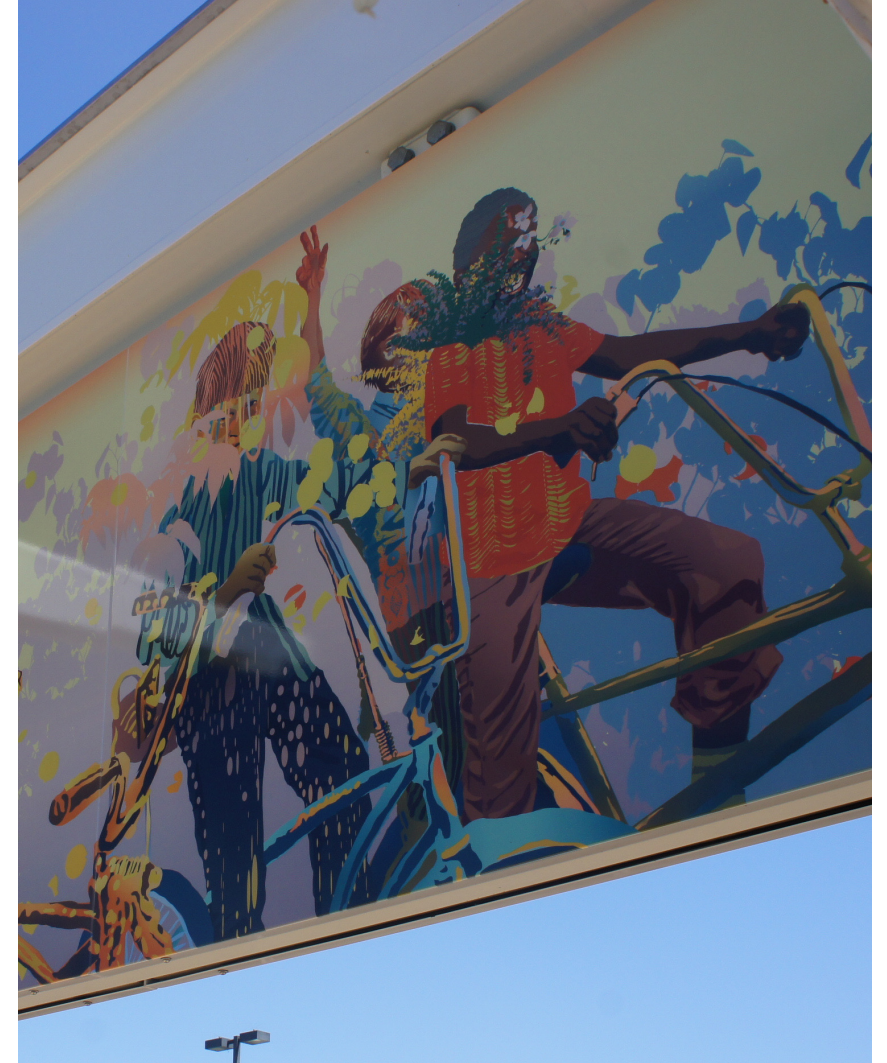
# KIM SCHOENSTADT | *Inglewood CA Series: Metro Collection 1-10* | Fairview Heights Station



# CARLSON HATTON | *Hyde Park Oasis* | Hyde Park Station



# CARLSON HATTON | *Hyde Park Oasis* | Hyde Park Station



# CARLSON HATTON | *Hyde Park Oasis* | Hyde Park Station



# INGRID CALAME | *Talking Drums* / Leimert Park Station



# INGRID CALAME | *Talking Drums* / Leimert Park Station



# INGRID CALAME | *Talking Drums* / Leimert Park Station




# DEAN ERDMANN | *Untitled* | Leimert Park Station



# DEAN ERDMANN | *Untitled* | Leimert Park Station



A construction worker wearing a white hard hat with various stickers, safety glasses, and a blue surgical mask is peeling a piece of brown paper off a wall. The wall is covered in a mosaic mural. The worker is wearing an orange safety vest over a grey t-shirt. The background shows a construction site with wooden framing and other walls.

**Paper facing is peeled away to reveal a mosaic mural by Mickalene Thomas.**

MARA LONNER | *Leimert Park Landscape* | Martin Luther King Jr. Station



# MARA LONNER | *Leimert Park Landscape* | Martin Luther King Jr. Station





EILEEN COWIN | *You are heading in the right direction* | Martin Luther King Jr. Station



# ERWIN REDL | *Inside Out – Outside In – Inside Out* | Expo/Crenshaw Station



# ERWIN REDL | *Inside Out – Outside In – Inside Out* | Expo/Crenshaw Station



# ERWIN REDL | *Inside Out – Outside In – Inside Out* | Expo/Crenshaw Station



# REBECA MENDEZ | *At the Same Time* | Expo/Crenshaw Station





# JAIME SCHOLNICK | *Layered Histories* | Expo/Crenshaw Station



# JAIME SCHOLNICK | *Layered Histories* | Expo/Crenshaw Station



[metro.net/artsorgpool](http://metro.net/artsorgpool)



**CALL TO  
ARTS & CULTURAL  
ORGANIZATIONS**

# More Metro Art

Subscribe for Email Updates:

- *[metro.net/art](https://metro.net/art)*

Follow us on:

- Facebook: **Metro Art Los Angeles**
- Instagram: **@metro.art.la**

# Metro Photo Enforcement Program

## Crenshaw Bl between 48th St and 59th St

- Cameras installed at the at-grade train crossings along Crenshaw Bl between 48th St and 59th St to monitor Left-turns.
- Aims to improve:
  - Vehicular & pedestrian safety
  - Mitigate potential train and auto accidents
- The program has been implemented on the A, L, G, and E Lines
- The program will be installed on all future light rail lines where dedicated left turn lanes exist



Left turn cameras on Crenshaw between 48<sup>th</sup> St and 59<sup>th</sup> St



# Metro Photo Enforcement Program

## Crenshaw Bl between 48th St and 59th St

- **Do all camera flashes result in a warning or citation?**
  - No, each incident is checked to determine if the images and video confirm a vehicle has entered the intersection on a red light
- **Why do the cameras flash even if a vehicle is not in the intersection?**
  - Remote testing activities and maintenance of the system
- **How does Metro manage the System?**
  - Metro contractor, Redflex Group has assigned Field Service Technicians working five days a week to maintain the system and trouble shoot any issues that may arise.
  - Remote monitoring



Traffic Enforcement Camera and Warning Sign at the Metro L (Gold) Line



# Metro Photo Enforcement Program

## Crenshaw Bl between 48th St and 59th St

- **July 1, 2022:** Traffic citations will be issued
  - Motorists who disobey traffic signals and operate vehicles in an illegal manner will begin receiving traffic citation in the mail.
  - Citations on the Metro program begin at \$100 plus penalties and assessments
- **October 1, 2021:** **eight**-month warning period began
  - After receiving community input, the warning period was extended until June 30, 2022, following a second awareness campaign
  - Motorists who operate vehicles in an illegal manner began receiving Warning Letters (no monetary fine) in the mail
- **September 1, 2021:** Initial Outreach efforts began
  - Construction Notices delivered door-to-door
  - Paid Print and Radio Media
  - Project Stakeholder E-newsletter
  - Social Media including NextDoor, Facebook, website
  - Community Meetings and Key Stakeholder Briefings

The image shows a sample of a Traffic Violation Warning Notice. At the top left is the Metro logo (a circle with an 'M') and the text 'Metro'. To the right of the logo is the Los Angeles County Metropolitan Transportation Authority logo and contact information: 'Los Angeles County Metropolitan Transportation Authority', 'One Gateway Plaza, Los Angeles, CA 90012-2952', and '213.922.2000 Tel metro.net'. Below the Metro logo is the text 'Traffic Violation Warning Notice'. To the right of this is the Los Angeles County Sheriff's Department logo (a star with a scale of justice) and the text 'Los Angeles County Sheriff's Department Transit Services Bureau'. Below the Sheriff's Department logo is the name and address of the violator: 'MARK 56FGHFF TWAIN, 5651 W TALAVI BLVD, GLENDALE AZ 85306'. The main body of the notice contains several paragraphs of text explaining the program, the violation, and the consequences. At the bottom, it states 'THIS IS NOT A CITATION' and provides contact information for the Traffic Violations Bureau.

Los Angeles County Metropolitan Transportation Authority One Gateway Plaza Los Angeles, CA 90012-2952 213.922.2000 Tel metro.net

**Metro**

**Traffic Violation Warning Notice**

Los Angeles County Sheriff's Department  
Transit Services Bureau

MARK 56FGHFF TWAIN  
5651 W TALAVI BLVD  
GLENDALE AZ 85306

The Los Angeles County Metropolitan Transportation Authority (MTA) and the Los Angeles County Sheriff's Department are dedicated to reducing the number of accidents, injuries, and fatalities associated with red light violations. In that regard, MTA and the Sheriff's Department have implemented a Photo Safety program to monitor and enforce violations at the Metro transit system crossings.

The program employs an automated traffic enforcement camera system. The cameras record violations as they occur during the red phase of the traffic signal. The camera system generates high quality photographs of the violation. Superimposed on each photograph are the date, time, location, amber time, and the length of the red signal.

The violation was photographed on **10/20/2021** at **11:18** by the automated traffic enforcement camera system. The vehicle with the license plate **56FGHFF** which is registered in your name, was photographed at **1.53** seconds after the red light was activated at the intersection of **Location description for LAM-CRS4-01** on the Crenshaw Line Crossing.

***This is a warning only.*** This notice does not require a response from you. The Crenshaw Line Photo Enforcement Program is issuing warnings only from **October 1, 2021 to January 2, 2022**. **Effective January 3, 2022, actual Citations will be mailed out to violators.** We encourage you to discuss this information with anyone who drives your vehicle. Disobeying traffic control devices is a serious offense that can have fatal consequences.

If you have any questions regarding this warning notice, please contact the Traffic Violations Bureau toll free at (866) 527-9470 Monday through Friday between the hours of 8:00 a.m. and 5:00 p.m., excluding holidays.

**Para instrucciones en Español por favor llame al telefono (866)-527-9470.**

Los Angeles County Sheriff's Department  
Transit Services Bureau  
Photo Enforcement Unit

**THIS IS NOT A CITATION**

Traffic Violation Warning Notice Only

Sample Warning Enforcement Letter

# Metro Photo Enforcement Program

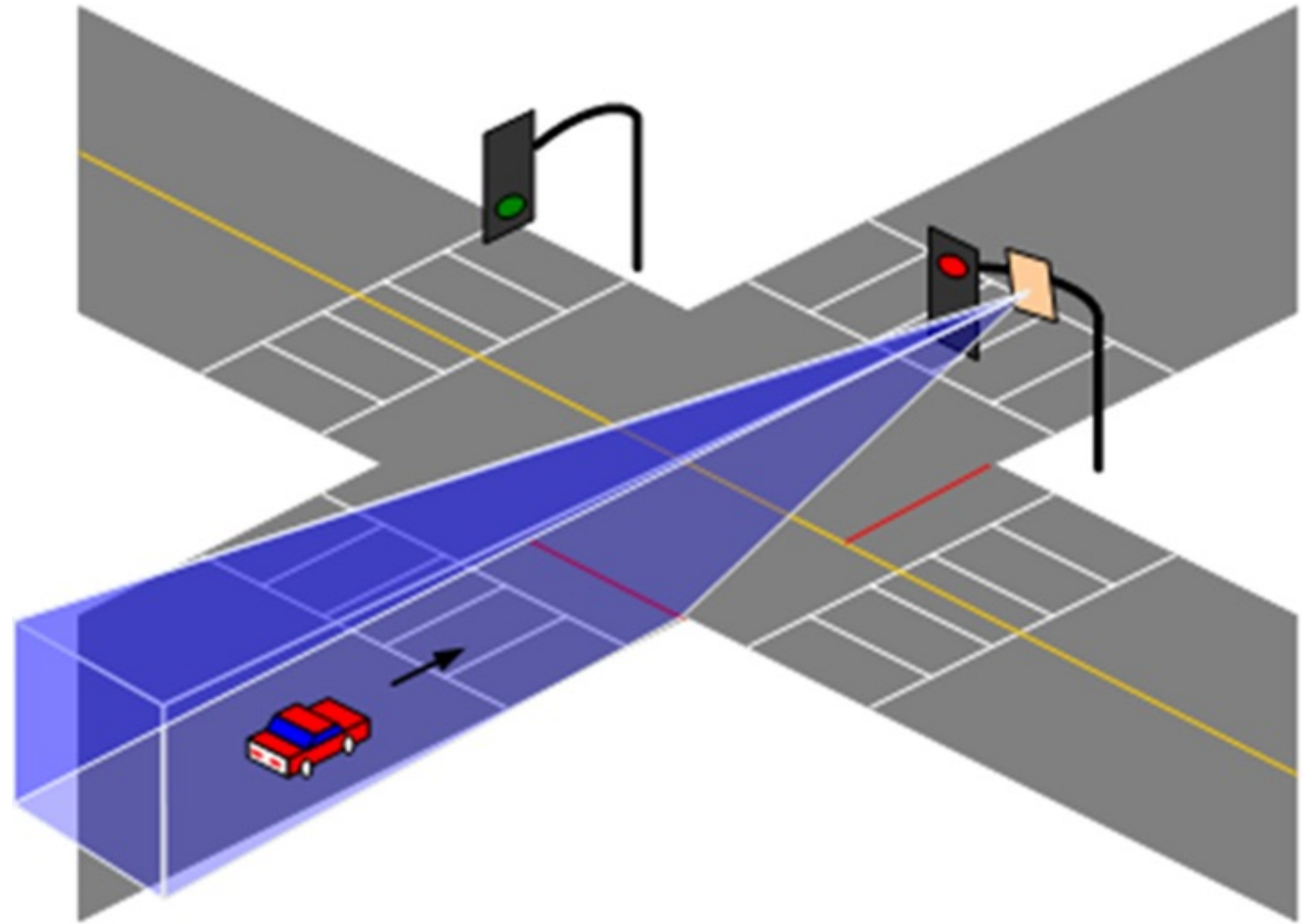
## Crenshaw Bl between 48th St and 59th St



Billboard located at the SE corner of Crenshaw Bl and 57th St

# How it Works

The system's radar tracks vehicles as they approach an intersection when the enforced lane has a red signal.



# How it Works

If the vehicle is traveling at 7mph or greater and the light is red, an image is taken of the vehicle prior to crossing the violation line.



# How it Works

A second image is taken after the vehicle crosses the violation line.

Location: LAM-CR54-03 SB to EB Crenshaw at 54th St Ver7.11.12.2  
Date: Friday 29 October 2021 Time: 13:02:21 Event: 10 SB  
Lane: 1 Vehicle Speed: 8 MPH Time into phase: 117.49 Elapsed Time: 1.88  
Amber:3.60



# How it Works

A third image is taken which is used to identify the driver as well as a 12 second video.



# Metro Small Business Pilot Programs

*Help small “mom and pop” businesses continue to thrive throughout construction and post construction*

**Metro Business Solution Center (BSC)**

**Metro Business Interruption Fund (BIF)**



# Business Solution Center K Line Transit Project

## BSC Business Resources:

- Hands-on business development
- Expert business advice and coaching
- Technical assistance
- Referrals to expert professionals

## BSC Program Statistics to Date:

- Over 400 business were contacted
- Over 300 business intakes/assessments
- Over 1,100 business referrals

The screenshot shows the website for the Metro Crenshaw/LAX Transit Project Business Solution Center. The header is green with the Metro logo and navigation links: Small Business Week, Events, About Us, Services, and Contact. Below the header, the text reads "CRENSHAW/LAX TRANSIT PROJECT BUSINESS SOLUTION CENTER". A carousel of images shows various people and activities, with a "Learn More About the BSC..." link. Below the carousel, the text reads "The Metro Crenshaw/LAX Transit Project Business Solution Center" and provides a brief description of the center's services.

# Metro's Business Interruption Fund



## BIF Information and Eligibility

- Financial assistance to small “mom & pop” businesses with 25 or fewer full-time employees directly impacted by Metro Rail construction along three project areas:
  - Crenshaw/LAX Transit Project
  - Purple Line Extension, Sections 1, 2 & 3
  - Regional Connector Project, Little Tokyo area & 2nd/Broadway Segment\*
- Businesses must be located immediately adjacent to the rail corridor and meet other eligibility requirements
- Grant amounts are determined by business revenue loss directly related to period of Metro construction disruption
- Businesses may receive up to \$50,000 per impact year



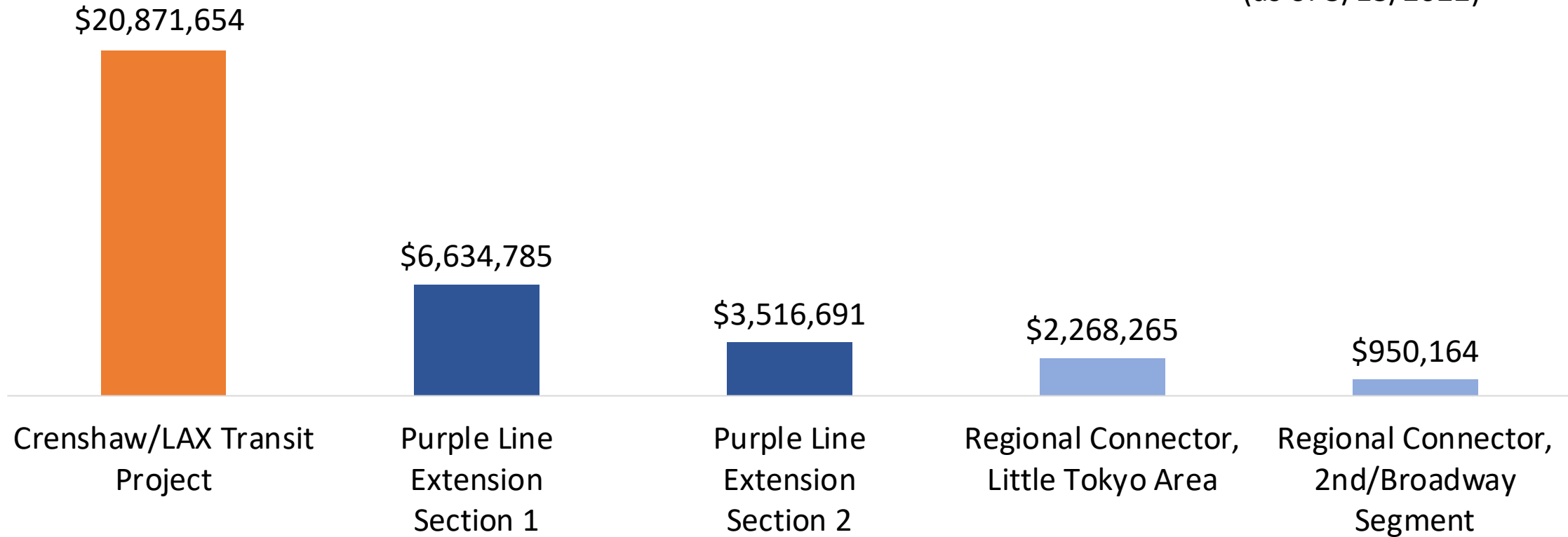
\*Segment eligibility based on full street closure with duration greater than six continuous months. Eligibility ended 6/30/17.

# Metro's Business Interruption Fund

Value of BIF Grants Awarded:  
\$34,241,560\*



(as of 5/13/2022)



**\*BIF Grants do not cover COVID-19 related impacts.**

# BIF/BSC/ESP Closing Ceremony

## K Line Transit Project



***We highly encourage small business owners to connect.***

### **Metro's Business Solution Center**

- Small business owners may contact the BSC for more information:
  - Phone: (310) 981-7908
  - Website: [metrobsc.net](http://metrobsc.net)

### **Metro's Business Interruption Fund**

- Potentially eligible small business owners may contact BIF Fund Administrator Pacific Coast Regional at:
  - Phone: (213) 739-2999 ext. 223
  - Email: [bif@metro.net](mailto:bif@metro.net)

# Eat Shop Play Crenshaw & Inglewood

Eat Shop Play highlights local mom and pop businesses in Crenshaw and Inglewood, especially eateries and specialty businesses operating pick-up and delivery during the past months.

The Eat Shop Play Crenshaw and Inglewood programs continue supporting local businesses as construction progresses by promoting them through regular social media posts and newsletters to over 12,000 community members.



Learn More: [www.metro.net/eatshopplay](http://www.metro.net/eatshopplay) or email [eatshopplay@metro.net](mailto:eatshopplay@metro.net)



# Featured Eat Shop Play Businesses

## Ride On Bike Shop / Co-Op

- May is National Bike Month
- Bike repair, maintenance, sales, and rentals.
- Career and paid apprenticeship opportunities.
- Healthy and environmentally friendly.
- 4319 Degnan Bl
- (323) 903-5043
- [Rideonbikeshop.com](https://rideonbikeshop.com)



Crenshaw/LAX Transit Project

May 11 at 12:00 PM · 🌐

Refresh your ride with the tools, accessories, and expertise at [Ride On Bike Shop Co-Op](#). Whether you are a new or veteran rider, stop by for their bike repair, maintenance, sale, and rental services.

[#EatShopPlay](#) [#Crenshaw](#)

Support Local Businesses

<https://bddy.me/3w2t00o>



# Featured Eat Shop Play Businesses

## The Sammiche Shoppe

- Lunch Meet-Up Feb. 4, 2020
- Healthy and delicious F.A.S.T. food
- Signature Lucy Mae air fried chicken sammiche.
- Catering, delivery, and vegetarian options.
- 222 E Regent St
- (424) 331-5378
- [www.sammicheshoppe.com](http://www.sammicheshoppe.com)



## Eat Shop Play

Metro's Eat Shop Play program supports local businesses as we build more rail for LA. Participation is free. Businesses located along Metro Rail construction projects are eligible to sign up for marketing assistance. Benefits to Local Businesses include Print/digital ads and Social media and email marketing.

Sign up

# Rail Safety & Mobility Programs



# Who is CEMP?

Metro's Community Enrichment & Mobility Programs (CEMP) Team is responsible for increasing transit safety awareness and providing education to residents of Los Angeles County who interact with Metro's public transportation system through various safety programs. This includes safety on Metro's rail lines, bus system, and bicycles.



Metro Community Education is mandated by the CA Public Utility Commission to provide education to communities within in light rail lines.



**Metro**

# Rail Safety Programs

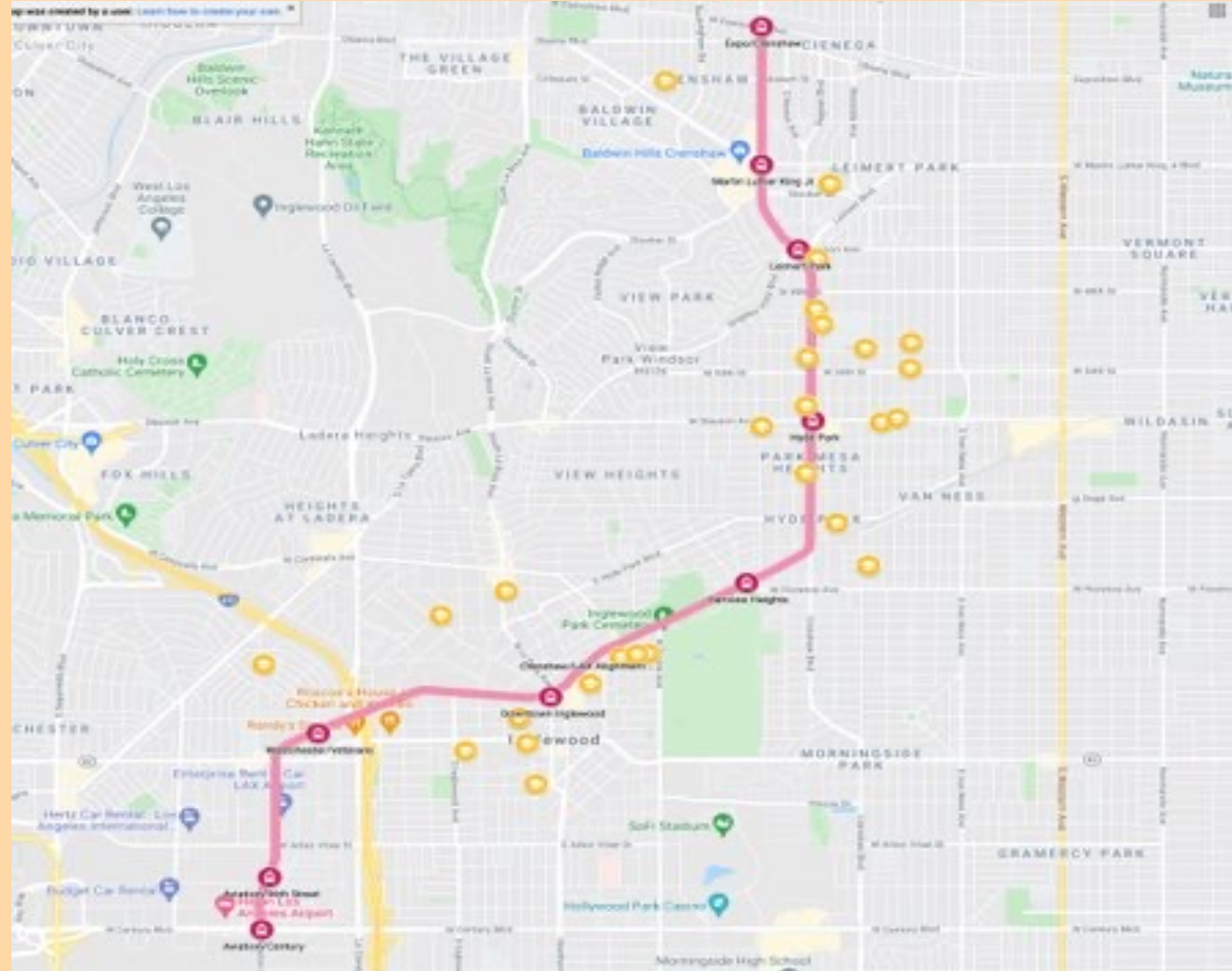
MCE provides safety presentations to all schools K-12 within a 0.5 mile radius of the A, E, L and K Lines.

**K Line Total Number of Schools: 31**

Outreach to all community/recreation centers, libraries and senior centers within a 1.5 mile radius.



**Metro**



# RSP – South Bay Team



Jacqueline Gonzalez  
Manager



Brittany Mullins  
Principal Community  
Relations Officer

# K Line Schools

Alliance Ouchi-O'Donovan

Crete Academy

Marcus Garvey School

Alliance Renee & Meyer Luskin Academy High School

Crozier Middle School

Open Magnet Charter School

Alliance Virgil Roberts Leadership Academy

Highland Elementary School

Saint John Chrysostom Catholic School

Angeles Mesa Elementary School & DREAMS Magnet

Hudnall Elementary School

Slauson Learning Center, No. 1

Audubon Middle School

ICEF Inglewood Elementary Charter Academy

Slauson Learning Center, No. 2

CATCH Prep Charter High, Inc.

ICEF View Park Preparatory Elementary School

St Mary's Academy

City Honors International Preparatory High School

ICEF View Park Preparatory High School

The Grace Hopper STEM Academy

Coliseum Street Elementary

ICEF View Park Preparatory Middle School

Today's Fresh Start Charter School

Crenshaw High School STEAM Magnet

Inglewood High School

Whitney Young Continuation High School

Crenshaw Montessori Academy

Islah Academy

Wilder's Preparatory Academy Charter School

YES Academy (Young Empowered Scholars)



**Metro**

# Virtual Programming



## RSP Workshop

- Line Specific Information (A, E, L Rail Lines)
- Train Safety
- Utilizing the Metro System



## Union Station Tour

- History of Union Station
- Transit Located at Union Station
- Future of Union Station



## B (Red) Line Destination Tour

- Overview of Metro System
- Specific Destinations along B – Line
- How to Ride Metro



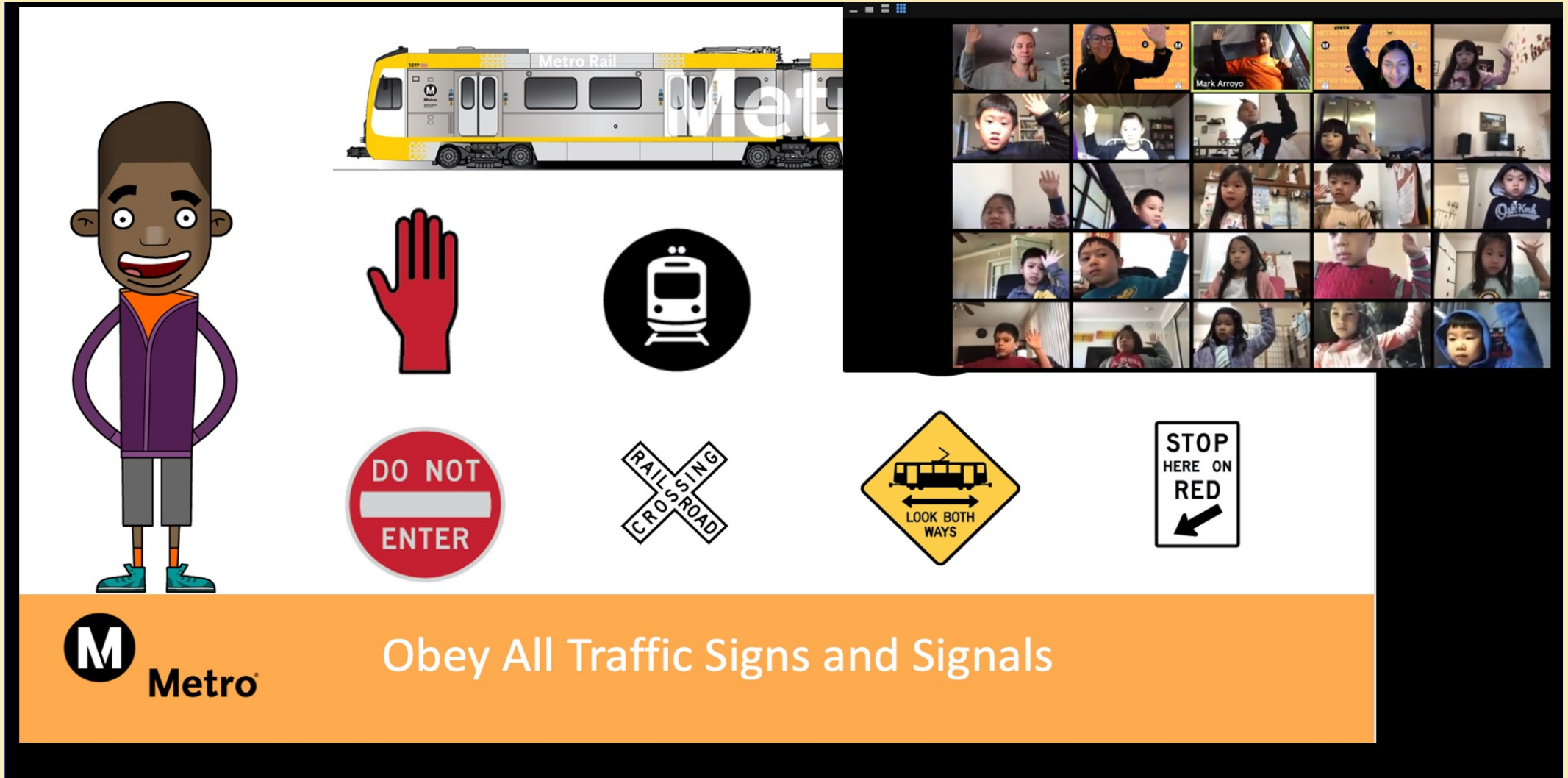
## Bike Safety Classes

- Review of bike safety tips
- Bike maintenance



Metro®

# Virtual Engagement



A virtual engagement presentation slide for Metro. On the left is a cartoon character of a young boy with brown skin, wearing a purple jacket and grey shorts. To his right is a yellow and grey Metro Rail train. Below the train are four icons: a red hand, a black circle with a white train, a red circle with a white bar and the text 'DO NOT ENTER', and a black circle with a white train. Below these are four traffic signs: a red circle with a white bar and 'DO NOT ENTER', a white X-shaped sign with 'RAIL CROSSROAD', a yellow diamond sign with a train and 'LOOK BOTH WAYS', and a white rectangular sign with 'STOP HERE ON RED' and a black arrow. On the right is a grid of 20 video thumbnails showing children in a virtual meeting, with one labeled 'Mark Arroyo'. At the bottom is an orange banner with the Metro logo and the text 'Obey All Traffic Signs and Signals'.

**M** Metro

Obey All Traffic Signs and Signals

# Rail Safety Advisor Program

RSAs are retired bus and rail operators who are temporarily employed to observe and record behaviors of pedestrians and motorists around grade crossings.



Metro®

# Virtual Interaction Opportunities

Please consider inviting the RSP Team to participate in:

- Career Day
- Back to School Nights
- Incorporate Metro when teaching Sustainability, Engineering or Mechanics
- Parent Meetings and Workshops
- Community and School Events
- Coffee with the Principal Meetings
- **Bicycle Education Safety Training**
- **Metro Youth Council**

\*All activities above are currently being conducted via virtual platforms



**Metro**

# On the Move Riders Program



## How to Ride Metro *Cómo viajar en Metro*

**1 Plan Your Trip**

Here's where to find schedule information on Metro Rail, Metro Local, Metro Rapid, Metro Express and Metro Liner service.

Use the Metro Trip Planner at metro.net

For assistance: Call 323.664.3876

Metroliner and Connections Available on board Metro buses and trains at Customer Centers and stations, and online

Regular fare	888.956.SAFE (7233)
Security	213.922.4226
Customer Relations	323.927.8929
Lost and Found	888.621.7628
Wheelchair Access	311
Customer Relay Service	213.680.0954
Metroliner Fare Office	844.TAP.FOHO (827.8444)
TAP Service Center	213.922.2811
Customer Support	213.922.2811

**2 Pay Your Fare**

To pay your fare in stations, select an option from the TAP vending machine

- One-way for a single boarding on a single line
- Day Pass, 7-Day Pass, 30-Day Pass for all day travel on Metro Rail
- Metro-to-Muni Transfer for transfer to a non-Metro connecting line
- Select the Senior/Disabled/Medicare option if you have valid proof of age or disability

Fare is dispensed on a reloadable TAP card. Tap the card on the turnstile or validator at stations or the farebox on buses. TAP cards are also available for purchase at Metro Customer Centers, Metro pass sales outlets, and online.

Two children under age 5 may travel free with each fare-paying adult on Metro bus or rail.

**3 Hop on Board**

After boarding on Metro Rail or Metro Local, please mark your TAP card on the farebox marked with the line you are boarding. If you are boarding on Metro Express or Metro Liner, please mark your TAP card on the farebox marked with the line you are boarding. If you are boarding on Metro Rapid, please mark your TAP card on the farebox marked with the line you are boarding. If you are boarding on Metro Rapid, please mark your TAP card on the farebox marked with the line you are boarding.

**uno Planee su viaje**

Para pagar en las estaciones, seleccione una opción de la máquina vendedora de TAP.

- Boleto de ida para un solo viaje en una sola línea
- Day Pass, 7-Day Pass, 30-Day Pass para viajes durante todo el día en líneas de autobús y trenes de Metro
- Transbordo de Metro-a-Muni para transbordar a líneas municipales
- Seleccione la opción de persona mayor/discapacitada/Medicare si tiene prueba válida de su condición

Su pasaje será agregado a una tarjeta TAP reusable. Toque su tarjeta al sello en el torniquete o validador en las estaciones de Metro Rail o en la máquina para pasaje en los autobuses de Metro. Las tarjetas TAP también son disponibles en los centros para clientes de Metro, locales de venta y por Internet en metro.net

Los niños menores de 5 años pueden viajar gratis por cada pasaje de adulto en autobuses o tren.

**dos Pague su pasaje**

Después de pagar el pasaje, mantenga su boleto para mostrarlo a los inspectores, quienes hacen directrices y recomendaciones de seguridad

- Las bicicletas están permitidas en Metro
- Camine siempre con su bicicleta en la plataforma
- Ingrese por las puertas marcadas con esta señal
- Párese con su bicicleta en el área designada
- Permita que otros pasajeros salgan e ingresen que usted aborde
- Déle prioridad a los pasajeros en silla de ruedas y otros pasajeros con discapacidades
- Siempre use los pasamano y las manijas de apoyo
- No bloquee las puertas o pasillos

Norma del Título VI  
Metro se compromete a asegurar que ningun participante o sea negada los beneficios de raza, color, origen nacional, sexo, edad o discapacidad para más información.

# On the Move Riders Program

On the Move Riders Program enhances and improves senior mobility throughout LA County through:

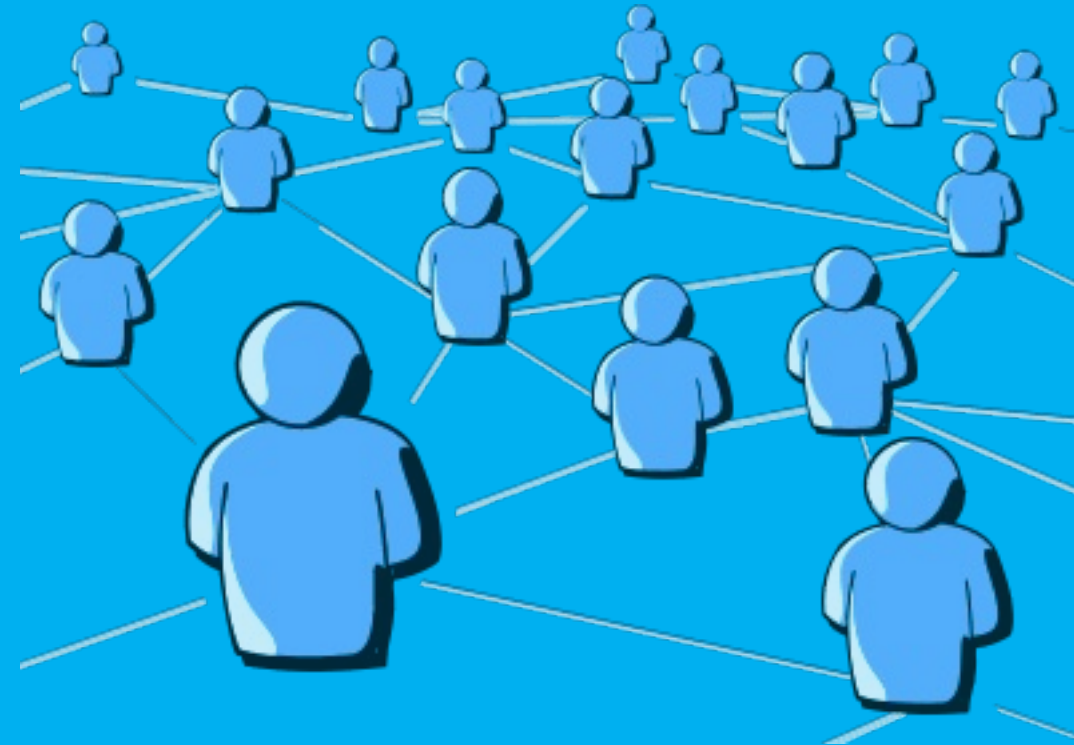
- Educational presentations
- Transit oriented events & resources
- Travel training tours
- Peer-to-peer travel training clubs



# On the Move Riders Program

## Upcoming Events

- **May 20th** – Westside/Central Pop-up Santa Monica Wise & Healthy Aging – In person\*
- **June 29th** – Annual Older Adult Transportation Expo – In person\*



# On the Move

## RIDERS PROGRAM



213.922.2002



*onthemove@metro.net*



*metro.net/onthemove*



Metro®

# Contact Information

**Jackie Gonzalez**

MCE Manager

[gonzalezj10@metro.net](mailto:gonzalezj10@metro.net)

**Brittany Mullins**

MCE PCRO

[MullinsB@Metro.net](mailto:MullinsB@Metro.net)

**Rail Safety Programs**

<https://www.metro.net/about/metro-student-field-trip/>

**On The Move Riders Program**

<https://www.metro.net/around/senior-tips/move-riders-club/>



**Metro**

# Nearby Metro Projects

## Airport Metro Connector Transit Station (AMC)



### Contact Us

-  213.922.4998
-  [laxconnector@metro.net](mailto:laxconnector@metro.net)
-  [metro.net/laxconnector](http://metro.net/laxconnector)
-  [@laxconnector](https://twitter.com/laxconnector)
-  [laxconnector](https://www.facebook.com/laxconnector)



## Centinela Grade Separation Project

### Contact Us

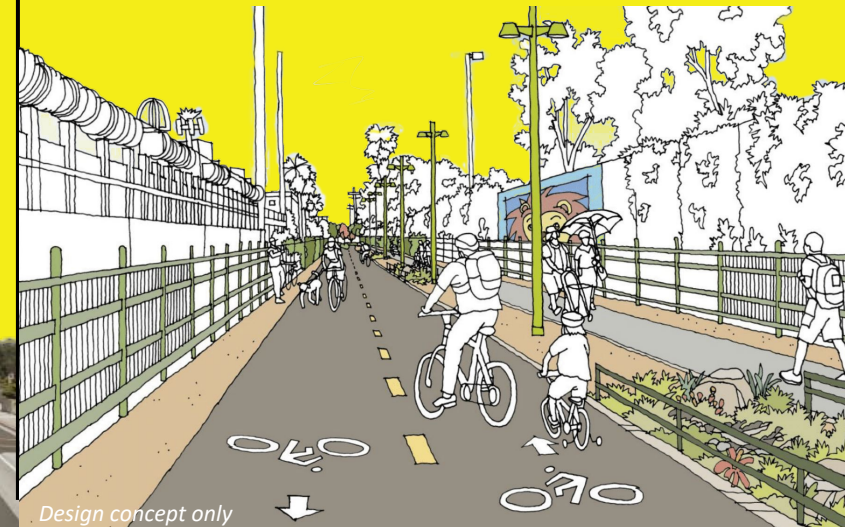
-  213.922.2426
-  Mark Dierking, [dierking@metro.net](mailto:dierking@metro.net)
-  [metro.net/projects/centinela](http://metro.net/projects/centinela)



## Rail to Rail Active Transit Corridor Project

### Contact Us

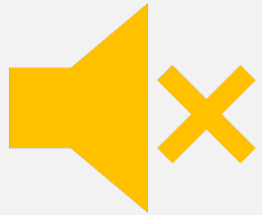
-  213.922.9228
-  [r2r@metro.net](mailto:r2r@metro.net)
-  [metro.net/r2r](http://metro.net/r2r)



# Using Zoom & Submitting Questions



This meeting is being recorded. Video file will be posted on our web site at **[metro.net/crenshaw](https://metro.net/crenshaw)**



Public video and mics are disabled. We cannot hear you or see you.



Please ask questions and submit comments via the Q&A feature.



Q&A

# Thank You, Please Connect With Us



213.922.2736



crenshawcorridor@metro.net



metro.net/crenshaw



@crenshawrail



crenshawrail