

Next stop: more rail.

CRENSHAW/LAX TRANSIT PROJECT



Virtual Construction Update Meeting

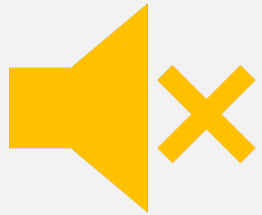
November 18, 2021 | 6 PM



Using Zoom & Submitting Questions



This meeting is being recorded. Video file will be posted on our web site at **metro.net/crenshaw**



Public video and mics are disabled. We cannot hear you or see you.



Please ask questions and submit comments via the Q&A feature.

Welcome, thank you for joining us!

5 min	CLAX Project Overview	Annette Cortez , Community Relations Manager
5 min	Metro Photo Enforcement Program	Abdul Zohbi , Systems Safety Manager
20 min	CLAX Project Update	Ron Macias , Northern Segment Raymond Acevedo , Southern Segment
10 min	Business Support Programs	Jessica Spearman , Principal Transportation Planner Sidney Urmancheev , Transportation Associate
5 min	Eat Shop Play Program	Jesus Galeno , Transportation Associate
15 min	Community Education	Jackie Gonzalez , Manager, Community Relations Brittany Mullins , Principal Community Relations Officer
15 min	Airport Metro Connector & Updates on other Metro Projects	Brett Roberts , Community Relations Manager
15 min	Moderation / Q&A	Ginny Brideau , Community Relations Manager

Discounted Fares/LIFE Program

Bus Fares Resume January 2022

Fare collection and front door boarding resumes on buses on Jan. 10, 2022

Discounted Prices

- **6 months of half price passes for all riders!**
- 1-Day, 7-Day and 30-Day passes at half-price savings that riders can start using on Jan. 10.
\$3.50 for a day pass, \$12.50 for a weekly pass and \$50 for a 30-day pass if you are not enrolled in a discounted program.
- The fares will be available on TAP vending machines, taptogo.net and at Metro Customer Centers for purchase beginning Dec. 15 until July 20, 2022.

Low-Income Fare Is Easy (LIFE) Program

- 6 Months of discounted LIFE fares:
New LIFE riders will get 90 days of free rides starting January 10, 2022, when fare collection restarts.
\$26 for a 30-day pass (regularly \$76)
\$6.50 for a 7-day pass (regularly \$19.50).
To Sign up for the LIFE Program visit www.metro.net/riding/life/

Project Overview

Walsh Shea Corridor Constructors (WSCC)

Main Line & Stations Contractor

Hensel Phelps Herzog (HPH)

Southwestern Maintenance Yard Contractor,
Completed March 2019

- 8.5-mile light-rail servicing the Cities of Los Angeles, Inglewood and El Segundo
- 8 new stations:
 - 3 underground
 - 4 at-grade
 - 1 aerial
- Life of Project Budget: \$2.148 Billion



Project Overview

- Project has reached over 99% completion
- All civil elements of construction completed including
 - Bridges
 - Retaining walls
 - Tunnels
 - Trackwork
 - Structural elements of all 8 stations
 - All traction power substations providing power to the light-rail vehicles have been powered up
- Remaining construction work includes
 - Systems work
 - Minor station work



Metro Photo Enforcement Program

Crenshaw Bl between 48th St and 59th St

- **January 3rd, 2022:** Traffic citations will be issued
 - Motorists who disobey traffic signals and operate vehicles in an illegal manner will begin receiving traffic citations in the mail.
- **October 1, 2021:** **Three-**month warning period began
 - After receiving community input, the one-month warning period was extended to three months.
 - **Began issuing Warning Letters (no monetary fine) in the mail.**
- **September 1, 2021:** Outreach efforts began
 - Construction Notices delivered door-to-door
 - Paid Print and Radio Media
 - Project Stakeholder E-newsletter
 - Social Media including NextDoor, Facebook, website
 - Community Meetings and Key Stakeholder Briefings

The image shows a sample of a "Traffic Violation Warning Notice" letter. At the top left is the Metro logo (a stylized 'M' in a circle) and the text "Metro". To the right of the logo is the Los Angeles County Metropolitan Transportation Authority logo and contact information: "Los Angeles County Metropolitan Transportation Authority", "One Gateway Plaza, Los Angeles, CA 90012-2952", and "213-932-2000 Tel metro.net". To the right of the Metro logo is the Los Angeles County Sheriff's Department logo (a star with 'S&D' in the center) and the text "Los Angeles County Sheriff's Department Transit Services Bureau".

The letter is addressed to: "MARK 56FGHFF TWAIN, 5651 W TALAVI BLVD, GLENDALE AZ 85306".

The main body of the letter contains the following text:

The Los Angeles County Metropolitan Transportation Authority (MTA) and the Los Angeles County Sheriff's Department are dedicated to reducing the number of accidents, injuries, and fatalities associated with red light violations. In that regard, MTA and the Sheriff's Department have implemented a Photo Safety program to monitor and enforce violations at the Metro transit system crossings.

The program employs an automated traffic enforcement camera system. The cameras record violations as they occur during the red phase of the traffic signal. The camera system generates high quality photographs of the violation. Superimposed on each photograph are the date, time, location, amber time, and the length of the red signal.

The violation was photographed on **10/20/2021** at **11:18** by the automated traffic enforcement camera system. The vehicle with the license plate **56FGHFF** which is registered in your name, was photographed at **1.53** seconds after the red light was activated at the intersection of **Location description for LAM-CRS4-01** on the Crenshaw Line Crossing.

This is a warning only. This notice does not require a response from you. The Crenshaw Line Photo Enforcement Program is issuing warnings only from **October 1, 2021 to January 2, 2022**. **Effective January 3, 2022, actual Citations will be mailed out to violators.** We encourage you to discuss this information with anyone who drives your vehicle. Disobeying traffic control devices is a serious offense that can have fatal consequences.

If you have any questions regarding this warning notice, please contact the Traffic Violations Bureau toll free at (866) 527-9470 Monday through Friday between the hours of 8:00 a.m. and 5:00 p.m., excluding holidays.

Para instrucciones en Español por favor llame al telefono (866)-527-9470.

Los Angeles County Sheriff's Department
Transit Services Bureau
Photo Enforcement Unit

THIS IS NOT A CITATION

Traffic Violation Warning Notice Only

Sample Warning Enforcement Letter

Metro Photo Enforcement Program

Crenshaw Bl between 48th St and 59th St

- Cameras are installed at the at-grade train crossings along Crenshaw Bl between 59th and 48th St
- Left-turn movements from Crenshaw Bl at train crossings onto side streets will be enforced by cameras
- Metro's contractor (Redflex) manages the operation and maintenance of the system
- Photo Enforcement Program has been implemented on the A Line (Blue), L Line (Gold), G Line (Orange), and E Line (Expo)



Left turn cameras on Crenshaw between 48th St and 59th St



Metro Photo Enforcement Program

Crenshaw Bl between 48th St and 59th St

Photo Enforcement Program Safety

- Aimed to improve vehicular and pedestrian safety and mitigate potential train and auto accidents associated with red-light violations at highway rail-grade crossings
- Together with Engineering, Education and Enforcement we've managed to reduce our left turn accidents by over 60%
- The system will be installed on all future light rail lines where dedicated Left Turn Lanes exist



Traffic Enforcement Camera and Warning Sign at the Metro L (Gold) Line



Underground Station Construction

Underground Station Construction

- Expo/Crenshaw Station
- Martin Luther King Jr. Station
- Leimert Park Station

Ongoing Construction Activities

- Electrical and communications systems work
- Station plaza features installation



Installation of roof flashing above the main entrance portal at the station plaza

Expo/Crenshaw Station

Exposition Bl and Crenshaw Bl



Station canopy and entrance



Station elevator entrance



Station entrance stairs and escalators

Expo/Crenshaw Station

Exposition BI and Crenshaw BI



Station entrance and art glass



Underground station art and platform features

Expo/Crenshaw Station Area



Spreading topsoil around the trees along westbound Obama Bl at Crenshaw Bl



Unloading and planting trees along eastbound Obama Bl and Crenshaw Bl



Unloading and planting trees along southbound Crenshaw Bl between MLK Bl/39th St

Martin Luther King Jr Station

Crenshaw Bl and Martin Luther King Jr Bl



Station elevator entrance

Underground station elevator

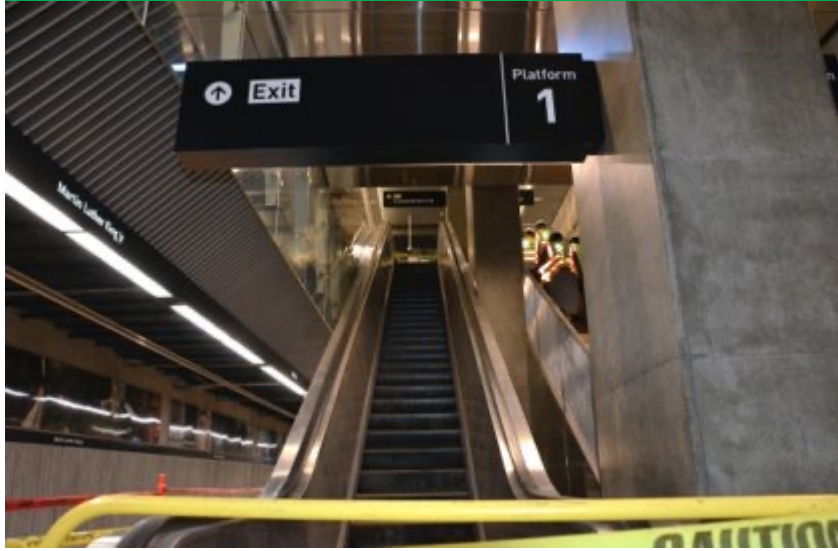


Station plaza landscaping and entrance

Martin Luther King Jr Station

Crenshaw Bl and Martin Luther King Jr Bl

Escalator leading to concourse level



Underground turnstiles



Station concourse level

Martin Luther King Jr Station

Crenshaw Bl and Martin Luther King Jr Bl



Leimert Park Station

Crenshaw Bl and Vernon Av



Installation of sensor mounts to the main entrance roll-up door at the station plaza



Pavilion art glass panels at station plaza

Leimert Park Station

Crenshaw Bl and Vernon Av

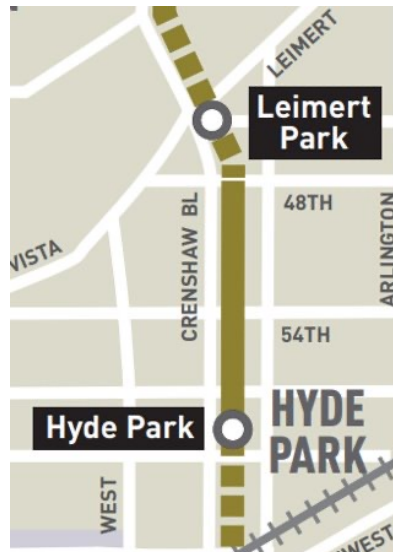


Park Mesa Heights At-Grade Segment

Crenshaw Bl between 48th St and 59th St

Street Restoration Work being performed by the City of Los Angeles

- Roadway resurfacing of mid-block areas
- Full depth roadway construction
- On-street public parking impacts
- Ongoing lane closures
- Pedestrian access occasionally restricted and rerouted
- Temporary bus stop and route relocations



City of LA crews performing road restoration on Crenshaw Bl and Westmount Av

Hyde Park Station

Crenshaw Bl and Slauson Av

Station platform and tactile pavers



Turnstiles and emergency telephone



Station ticket vending machine canopy and art mural

Hyde Park Station Porcelain Enamel Steel Art Panels



Installed porcelain enamel steel art panel

Hyde Park Station

Crenshaw Bl and Slauson Av



Hyde Park Segment Tunnel / Cut and Cover

Crenshaw BI between 59th St to 67th St

Construction Status

- Final street restoration was completed
- Outstanding work:
 - Additional minor utility work
 - Tree Planting



Landscaping at train portal near Crenshaw BI and 67th St



Fairview Height Station

West Bl at Redondo Bl



Walkway, bike locker, and tactile pavers



Platform entrance



Platform entrance and Ticket Vending Machine canopy

Fairview Heights Station Porcelain Enamel Steel Art Panels



Downtown Inglewood Station

Florence Av at La Brea Av to Hillcrest Bl



Platform entrance and turnstiles



Station platform and tactile pavers



Station pylon, Ticket Vending Machine, map cases

Downtown Inglewood Station Porcelain Enamel Steel Art Panels



Westchester/Veterans Station

Florence Av at Hindry Av



Station view from street



Entrance to station platform



Entrances, OCS, and railway track

Westchester/Veterans Station Porcelain Enamel Steel Art Panels



Aviation/Century Station

Aviation Bl at Century Bl



Station entrance, TVM, and turnstiles



Bike lockers and elevator



Station platform and signage

Aviation/Century Station Artwork

Aviation Bl at Century Bl



Porcelain Enamel Steel Art Panels



Aerial Station and Art Fence

CLAX – TESTING PROGRESS

LFAT Testing

As of November 5th, 2021, LFAT Completion: 66%

SIT Testing

As of November 5th, 2021, SIT Completion: 62%

Grade Crossing Approval

As of November 5th, 2021, Completion: 6%

*LFAT & SIT Testing up ~10% since Sept. 24th



Century / Aviation – G-TEL ADA Compliance



EXPO Station – Emergency Ventilation SIT



MLK Station – Fire Alarm LFAT



Leimert Park Station – Escalator SIT

Grade Crossing Testing with Train Movement



Arbor Vitae At-Grade Crossing Train Movement Testing

Systems Testing



Smoke Test at Expo/Crenshaw Station



Over-Car and Under-Car Deluge System at Leimert Park Station

Remaining Work Walks

Completed 80% of all the remaining systems walks:

- Traction Power – ~~30%~~ 90%
- Over-Head Catenary System – ~~50%~~ 70%
- Train Control – ~~30%~~ 90%
- Electrical – ~~20%~~ 70%
- Mechanical and Plumbing – ~~5%~~ 60%
- Communications – ~~20%~~ 90%
- Fire Life Safety – 25%
- Ductbank – 10%

* Percentages of completion provided do not reflect discrepancy progress.



Remaining items walk for Over-Head Catenary System



Remaining items walk for Traction Power Substations



Remaining items walk for Train Control and Communications

Metro Small Business Pilot Programs

Help small “mom and pop” businesses continue to thrive throughout construction and post construction

Metro Business Solution Center (BSC)

Metro Business Interruption Fund (BIF)



Business Solution Center

Crenshaw/LAX Transit Project

BSC Business Resources:

- Hands-on business development
- Expert business advice and coaching
- Technical assistance
- Referrals to expert professionals

BSC Program Statistics – through Q2 2021:

- Number of business Contacts: **479**
- Number of business Intakes/Assessments: **363**
- Number of business referrals: **1145**

The screenshot shows the website for the Metro Crenshaw/LAX Transit Project Business Solution Center. The header is green with the Metro logo and navigation links: Small Business Week, Events, About Us, Services, and Contact. Below the header, the text reads "CRENSHAW/LAX TRANSIT PROJECT BUSINESS SOLUTION CENTER". A carousel of images shows a man in a light blue shirt, a woman in a yellow shirt, and a woman in a yellow top. Below the carousel, the text reads "Learn More About the BSC...". The main content area has a white background with the heading "The Metro Crenshaw/LAX Transit Project Business Solution Center" and a paragraph of text: "Metro's Pilot Business Solution Center (BSC) provides hands-on business assistance and support services to small businesses along the Crenshaw/LAX corridor during the four-year term of the Crenshaw/LAX Transit Project. Small businesses along the corridor have access to the BSC for business and technical assistance including business development services and referrals to partnering business resource providers (read more...)." The text "(read more...)" is underlined.

Business Solution Center COVID-19 Support

Support for businesses during COVID-19 Pandemic:

- Continued services via phone call, email and safely performed site visits throughout duration of the pandemic
- Small business administration
 - SBA contact for outreach/support
 - Disaster loan funding
 - PPP funding
- Los Angeles Urban League micro grants
 - Grants between \$2,000 - \$5,000
 - Over 10 grants awarded for more than \$35,000
- Others



Metro's Business Interruption Fund



BIF Information and Eligibility

- Financial assistance to small “mom & pop” businesses with 25 or fewer full-time employees directly impacted by Metro Rail construction along three project areas:
 - Crenshaw/LAX Transit Project
 - Purple Line Extension, Sections 1, 2 & 3
 - Regional Connector Project, Little Tokyo area & 2nd/Broadway Segment*
- Businesses must be located immediately adjacent to the rail corridor and meet other eligibility requirements
- Grant amounts are determined by business revenue loss directly related to period of Metro construction disruption
- Businesses may receive up to \$50,000 per impact year



*Segment eligibility based on full street closure with duration greater than six continuous months. Eligibility ended 6/30/17.

Metro's Business Interruption Fund

Metro's Business Interruption Fund (BIF) is **accepting applications** for transit rail **construction impact** along the Crenshaw/LAX Transit Project, the Little Tokyo area of the Regional Connector and Sections 1, 2 and 3 of the Purple Line Extension **sustained from March 20, 2020, forward** (during the COVID-19 pandemic).

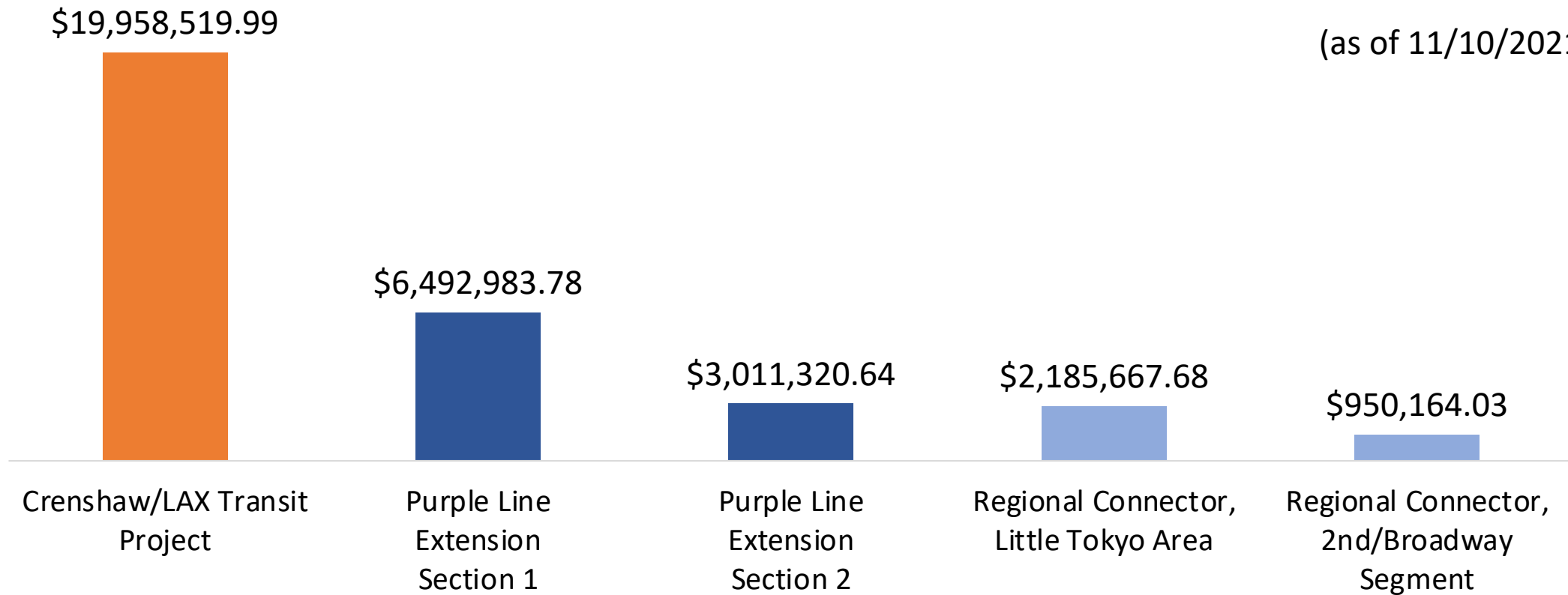
- **Small** “mom and pop” **businesses** that experienced transit rail construction impact during the COVID-19 pandemic **may be eligible**.
- Potentially eligible small business owners may *contact BIF Fund Administrator Pacific Coast Regional at 213.739.2999 x223 or Metro at bif@metro.net*.

Metro's Business Interruption Fund

Value of BIF Grants Awarded:
\$32,598,656.12*



(as of 11/10/2021)



***BIF Grants do not cover COVID-19 related impacts.**

Business Interruption Fund

Crenshaw/LAX Transit Project



BIF Program Statistics – November 10, 2021:

- BIF applications submitted: **1566**
- BIF applications approved: **1323**
- BIF applications pending financials: **115**
- BIF applications deemed not eligible: **126**
- BIF applications denied: **2**
- BIF Grants Awarded: **1296**
- BIF Grant Payments: **\$32,598,656.12**

Crenshaw/LAX – BIF Statistics:

- **797** grants awarded to **C/LAX**
- Total amount: **\$19,958,519.99**
- **232** small businesses received a grant

Eat Shop Play Crenshaw & Inglewood

Eat Shop Play highlights local mom and pop businesses in Crenshaw and Inglewood, especially eateries and specialty businesses operating pick-up and delivery during the past months.

The Eat Shop Play Crenshaw and Inglewood programs continue supporting local businesses as construction progresses by promoting them through regular social media posts and newsletters to over 14,000 community members.



Social Media Posts



Crenshaw/LAX Transit Project

October 20 at 12:01 PM · 🌐

Papa Johns Pizza #4904 is a locally-owned franchise bringing Papa's pies closer to home. Now until Halloween you can order a spooky Jack-o-Lantern Pizza to scare away your hunger.

#EatShopPlay #Crenshaw

Support Local Businesses

<https://bddy.me/3AZ5CjI>



October 2021 Facebook Spotlight



Crenshaw/LAX Rail

@crenshawrail



The @SammicheShoppe offers a healthier alternative to fast food that's delicious, filling, and served with a smile. Their high-quality ingredients ensure that every bite will leave you wanting more.

#EatShopPlay #Inglewood

Support Local Businesses

bddy.me/3BG2UzF



November 2021 Twitter Spotlight

Featured Eat Shop Play Businesses

Little Belize

- Holiday meal specials
- Regular celebrations and events
- Karaoke lounge every Friday
- 217 E Nutwood St
- [\(310\) 674-0696](tel:(310)674-0696)
- <https://littlebelizerestaurant.com/>



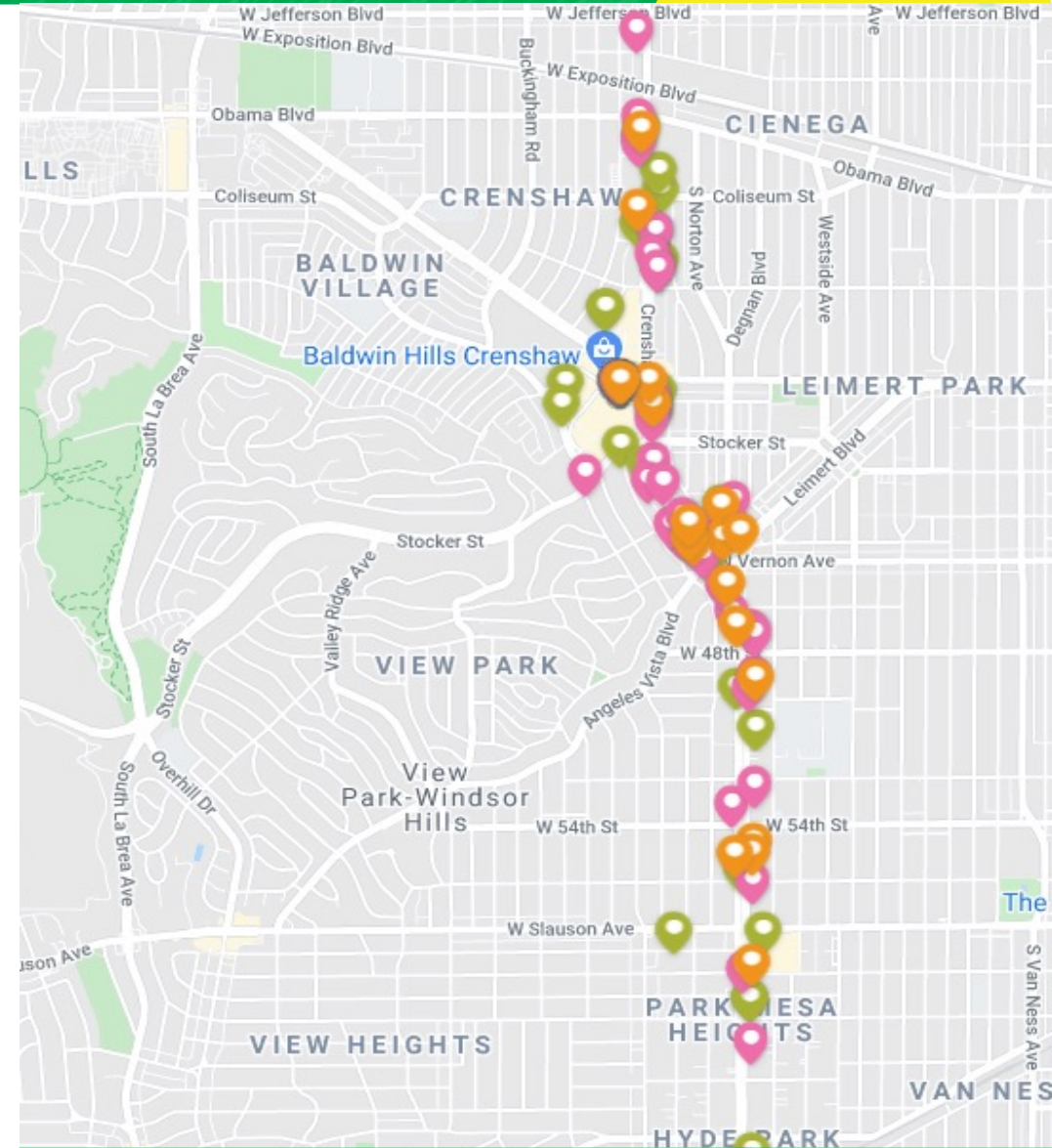
Eat Shop Play

ESP Business Spotlights:

- Metro Crenshaw/LAX Social Media Spotlights
- Regular Crenshaw/LAX Eat Shop Play email spotlights
- Referrals to Business Solution Center and Business Interruption Fund

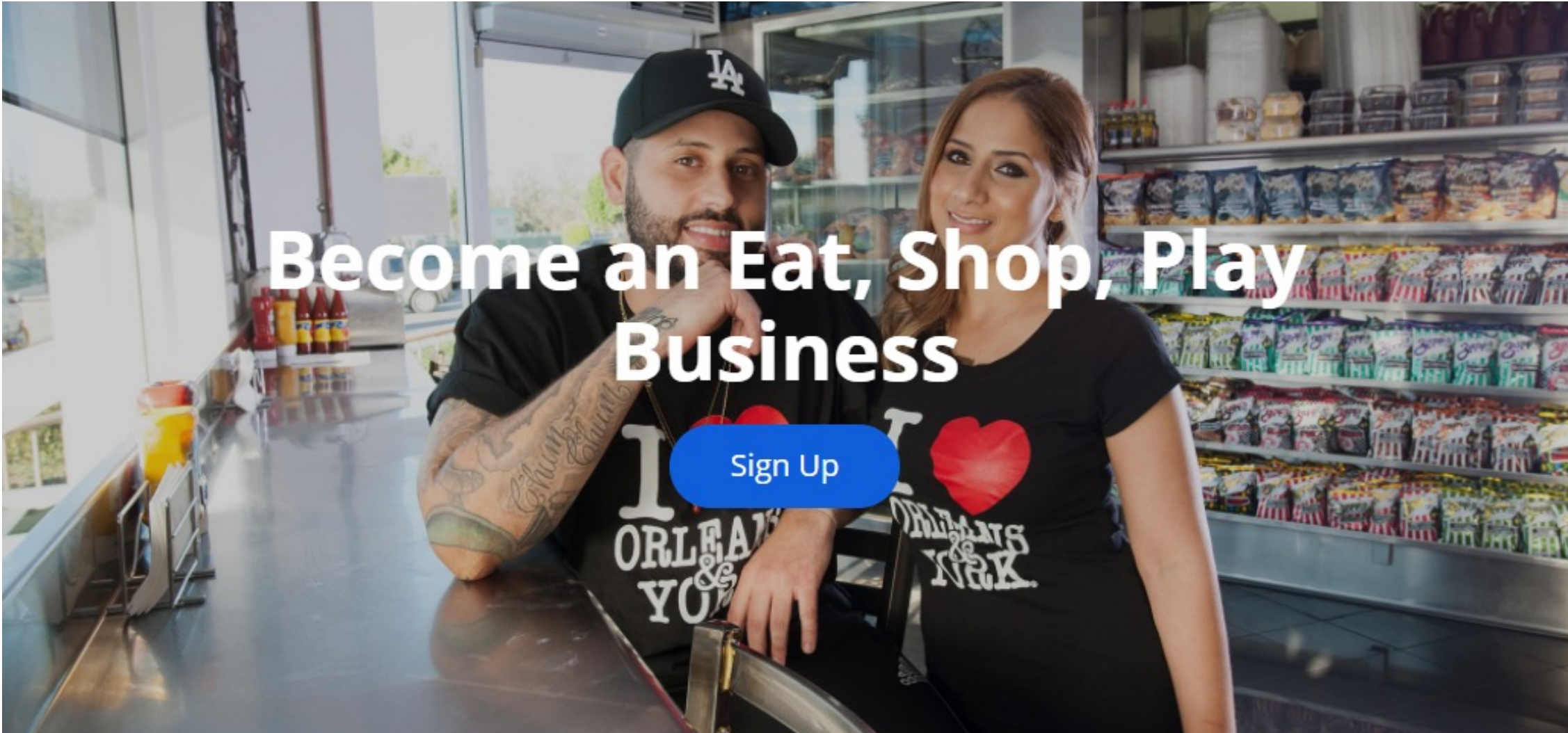
ESP Program Statistics: July 2020 – October 31, 2021:

- Number of Crenshaw/LAX Eat Shop Play businesses: 97
- Eat Shop Play Social Posts: 91
- Eblasts & Newsletters 30
- Total Individual Business features: 170



Map of Crenshaw Eat Shop Play Businesses

Enroll Your Business



metro.net/eatshopplay | eatshopplay@metro.net

**Metro Community
Education
& Mobility Programs**



Metro

Who is Metro Community Education?

Metro's Community Education (MCE) Team is responsible for increasing transit safety awareness and providing education to residents of Los Angeles County who interact with Metro's public transportation system through various safety programs. This includes safety on Metro's rail lines, bus system and bicycles.



Metro Community Education is mandated by the CA Public Utility Commission to provide education to communities within in light rail lines.



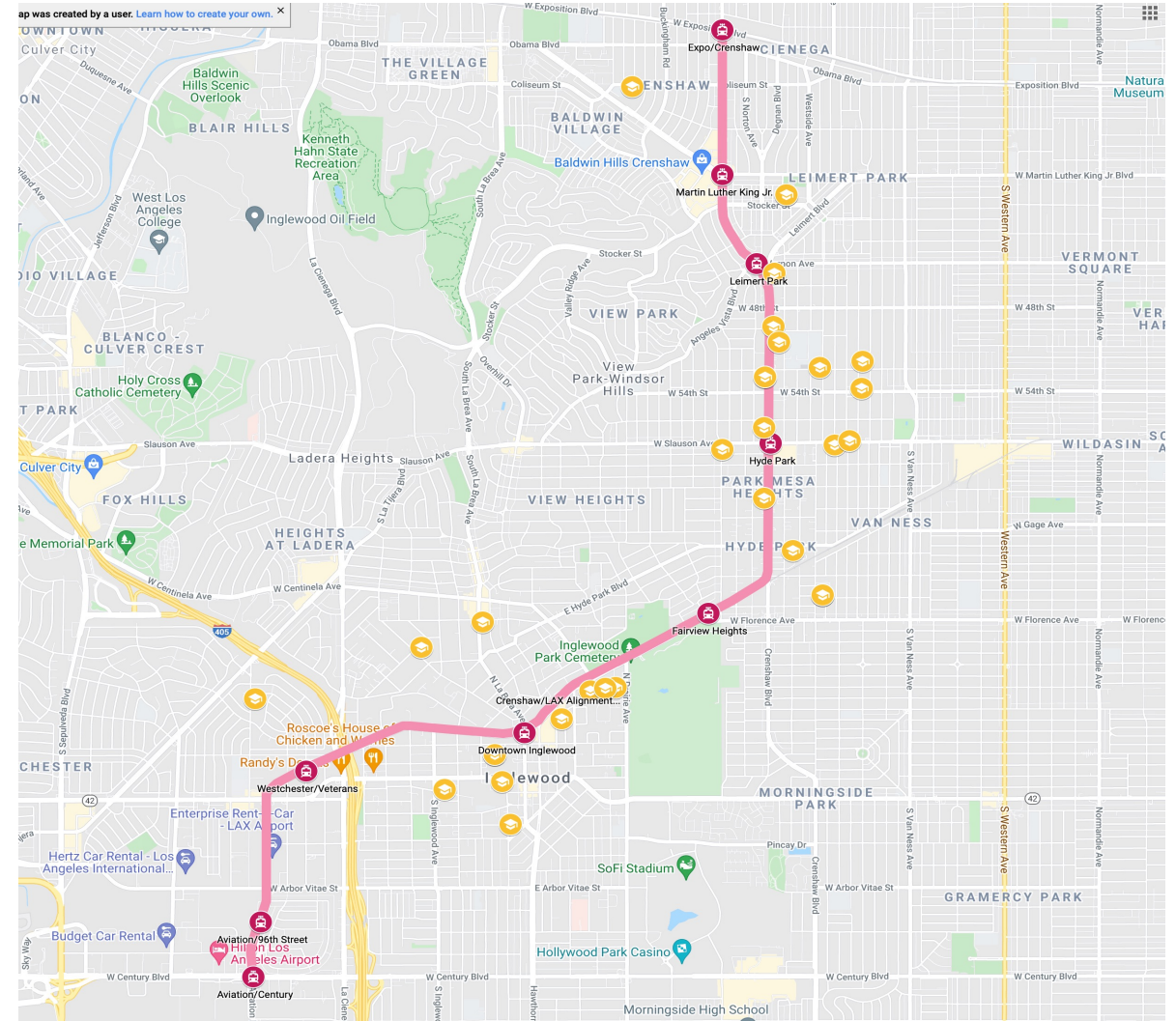
Metro

Education Outreach Service Area

MCE's **Transit Safety Program (TSP)** provides safety presentations to all schools within a 0.5 mile radius of the A, L and E Lines.

Crenshaw/LAX Line
Total Number of Schools: 31

Outreach to all community/recreation centers, libraries and senior centers within a 1.5 mile radius.



Virtual Programming



Transit Safety Workshop

- Line Specific Information (A, E, L Rail Lines)
- Train, Bus, Bike & Pedestrian Safety
- Utilizing the Metro System



Union Station Tour

- History of Union Station
- Transit Located at Union Station
- Future of Union Station



B (Red) Line Destination Tour

- Overview of Metro System
- Specific Destinations along B – Line
- How to Ride Metro



Metro

Virtual Engagement



The interface is divided into several sections. On the left is a cartoon character of a young man with dark skin, wearing a purple jacket and grey shorts. To his right is a yellow and grey Metro Rail train. Below the train are four icons: a red hand, a black circle with a white train, a red circle with a white bar and the text 'DO NOT ENTER', and a black circle with a white train. Below these are four traffic signs: a red circle with a white bar and 'DO NOT ENTER', a black and white 'RAILROAD CROSSING' sign, a yellow diamond with a train and 'LOOK BOTH WAYS', and a white square with 'STOP HERE ON RED' and a black arrow pointing left. On the right is a grid of 20 video thumbnails, each with an orange smiley face overlay. The name 'Mark Arroyo' is visible in one of the thumbnails. At the bottom left is the Metro logo (a white 'M' in a black circle) and the word 'Metro'. At the bottom center is the text 'Obey All Traffic Signs and Signals'.

Virtual Interaction Opportunities

Please consider inviting the MCE Team to participate in:

- Career Day
- Back to School Nights
- Incorporate Metro when teaching Sustainability, Engineering or Mechanics
- Parent Meetings and Workshops
- Community and School Events
- Coffee with the Principal Meetings
- **Bicycle Education Safety Training**
- **Metro Youth Council**

*All activities above are currently being conducted via virtual platforms

Metro Community Education

Additional Programs:

- Rail Safety Ambassadors
- On the Move Riders Program

Rail Safety Ambassador Program

RSA's Responsibilities

- Observe and record behaviors of pedestrians and motorists around grade crossings
- Explain safe practices to the public
- Distribute safety materials



Metro®



Crenshaw/LAX Neighborhood Student Art Contest

DEADLINE EXTENDED TO: April 8, 2022

Calling all high school students with roots in Crenshaw District, Inglewood, Westchester, and adjacent areas! Metro invites students grades 9-12 to submit artwork that celebrates their communities along the upcoming Crenshaw/LAX Transit Project!

Metro will produce commemorative pins inspired by the winning artworks of eight student artists. Each pin will represent one of eight future Crenshaw/LAX Transit Project stations.

Selected artists will receive \$500 compensation for their work. This is a great opportunity for young artists and future creatives in the area to be recognized!

Contest info & entry form:
metro.net/claxartcontest

Contact:
Sasha Ali, AliS@metro.net



Metro[®]



On the Move Riders Program



How to Ride Metro *Cómo viajar en Metro*

1 Plan Your Trip

Here's where to find schedule information on Metro Rail, Metro Local, Metro Rapid, Metro Express and Metro Liner service.

Go the way:
Use the Metro Trip Planner at metro.net

For assistance:
Call 323.684.3876

Metro uses the following:
Available on board Metro buses and trains, at Customer Centers and stations, and online

Regular fare	888.956.SAFE (7233)
Security	213.922.4226
Customer Relations	323.927.8929
Lost and Found	888.621.7628
Wheelchair Access	311
Customer Relay Service	213.680.0954
Reduced Fare Office	844.TAP.FARE (827.8444)
TAP Service Center	844.827.8666
Customer Support	213.922.2811

2 Pay Your Fare

To pay your fare in stations, select an option from the TAP vending machine.

- One-way for a single boarding on a single line
- Day Pass, 7-Day Pass, 30-Day Pass for all day travel on Metro Rail
- Metro-to-Muni Transfer for transfer to a non-Metro connecting line
- Select the Senior/Disabled/Medicare option if you have valid proof of age or disability

Fare is dispensed on a reloadable TAP card. Tap the card on the turnstile or validator at stations or the farebox on buses. TAP cards are also available for purchase at Metro Customer Centers, Metro pass sales outlets, and online.

Two children under age 5 may travel free with each fare-paying adult on Metro bus or rail.

3 Hop on Board

After boarding, please remain seated and hold onto the handrails and overhead straps. Please do not drink or eat on Metro vehicles.

After boarding, please remain seated and hold onto the handrails and overhead straps. Please do not drink or eat on Metro vehicles.

uno Planee su viaje

Para planear su viaje, seleccione una opción de la máquina vendedora de TAP.

- Boleto de ida para un solo viaje en una sola línea
- Day Pass, 7-Day Pass, 30-Day Pass para viajes durante todo el día en líneas de autobús y trenes de Metro
- Transbordo de Metro-a-Muni para transbordar a líneas municipales
- Seleccione la opción de persona mayor/discapacitada/Medicare si tiene prueba válida de su condición

Si su pasaje será agregado a una tarjeta TAP reusable, toque su tarjeta al sello en el torniquete o validador en las estaciones de Metro Rail o en la máquina para pasaje en los autobuses de Metro. Las tarjetas TAP también son disponibles en los centros para clientes de Metro, locales de venta y por Internet en metro.net

Los niños menores de 5 años pueden viajar gratis por cada pasaje de adulto en autobuses o tren.

dos Pague su pasaje

Después de pagar el pasaje, mantenga su boleto para mostrarlo a los inspectores, quienes hacen directrices y recomendaciones de seguridad.

- Las bicicletas están permitidas en Metro
- Camine siempre con su bicicleta en la plataforma
- Ingrese por las puertas marcadas con esta señal
- Plácese con su bicicleta en el área designada
- Permita que otros pasajeros salgan e ingresen que usted aborde
- Déle prioridad a los pasajeros en sillas de ruedas designadas
- Siempre use los pasamano y las manijas
- No bloquee las puertas o pasillos

Norma del Título VI
Metro se compromete a asegurar que ningun participante o sea negada los beneficios de raza, color, origen nacional, sexo, edad o discapacidad para más información.

On the Move Riders Program

On the Move Riders Program (OTMRP) enhances and improves senior mobility throughout LA County through:

- Educational presentations
- Transit oriented events & resources
- Travel training tours
- Peer-to-peer travel training clubs

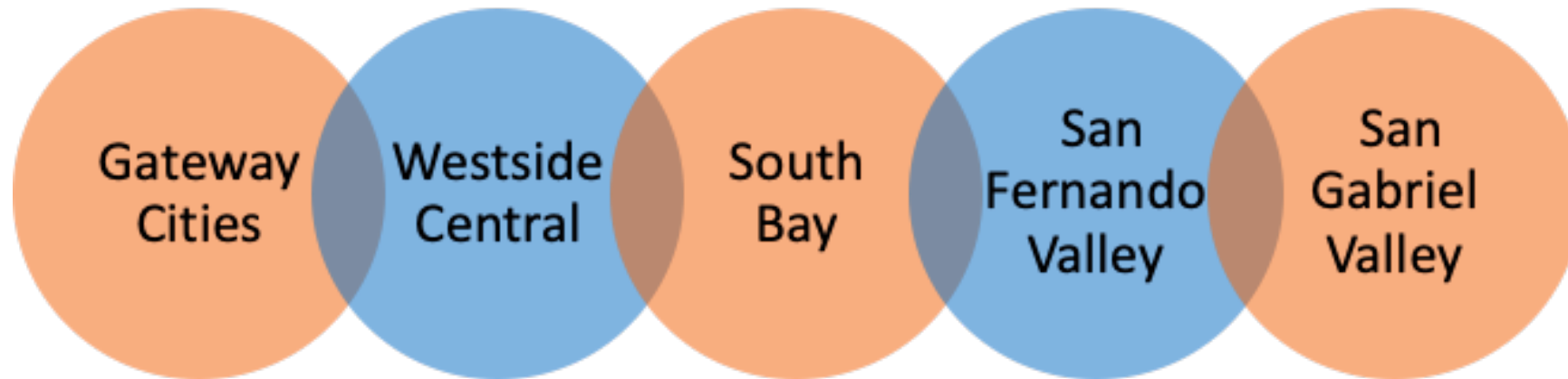
*All activities above are currently being conducted via virtual platforms



Metro



On the Move Riders Clubs



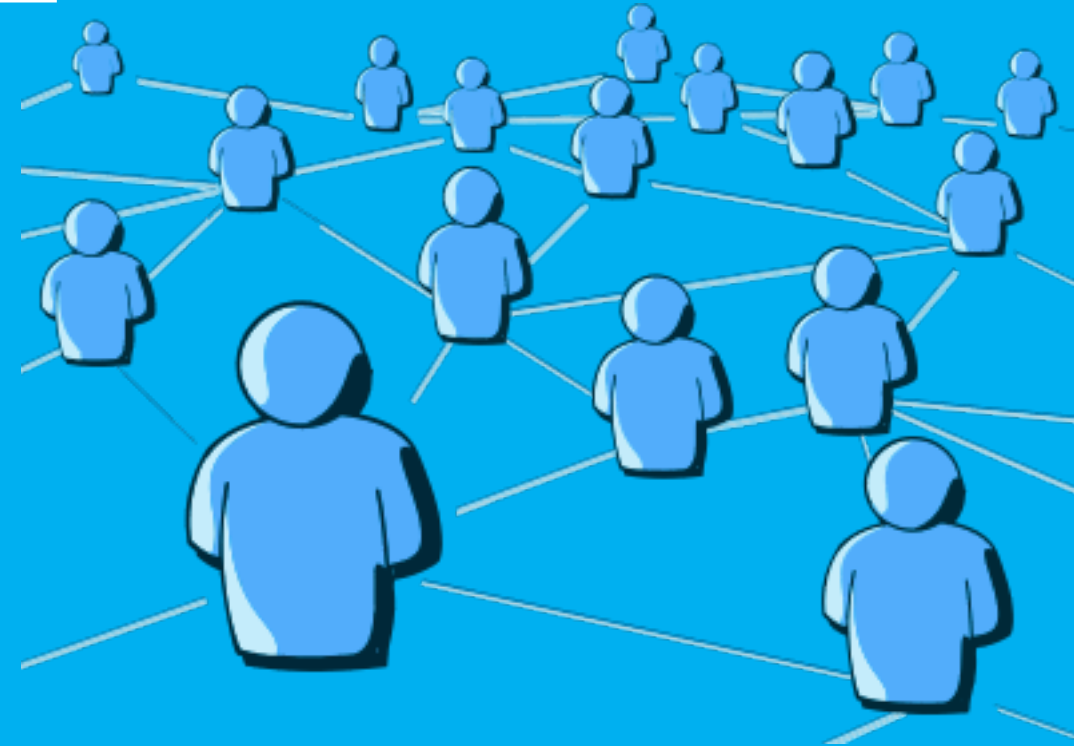
Over 30 clubs across LA County!



On the Move Riders Program

Virtual Programing and Upcoming Events

- South Bay Monthly Regional Meetings –
Every **4th Wednesday** of every month*
Holiday Dates: **Nov. 17th & Dec. 15th**
- Raised on Records – **December 17th**
- Annual South Bay Pop-up – **February**
- Annual Older Adult Transportation Expo –
May



On the Move

RIDERS PROGRAM



213.922.2002



onthemove@metro.net



metro.net/onthemove



Metro®

Q & A

Jackie Gonzalez
MCE Manager

gonzalezj10@metro.net

Brittany Mullins
MCE PCRO

MullinsB@Metro.net

Transit Safety Programs

<https://www.metro.net/about/metro-student-field-trip/>

On The Move Riders Program

<https://www.metro.net/around/senior-tips/move-riders-club/>



Metro



M METRO AIRPORT CONNECTOR

Airport Metro Connector (AMC) Station: Overview

- June 2014, Board approved adding a station to the Crenshaw/LAX Line at Aviation Bl/96th St.
- Will connect Los Angeles International Airport (LAX), with the Airport Metro Connector Transit Station (AMC) at Aviation Bl/96th Street.
- Once in operation, riders will transfer quickly and easily between LAX and Metro's network.
- AMC Station will be located on the future Crenshaw/LAX Transit Project, and will include:
 - Bus plaza
 - Bicycle parking
 - Customer service center, passenger pick-up and drop-off area
 - Commercial area for retail tenants
- Estimated project budget is \$898M.

AMC: Project Location



CRENSHAW LINE

AMC STATION

LAX

Airport Metro Connector (AMC): Project Features



Airport Metro Connector (AMC): Project Rendering



BIKE HUB



CRENSHAW/ LAX
LINE & GREEN LINE



BUS PLAZA



SITE SUPPORT
FUNCTIONS

APM
(BY LAWA)



METRO HUB
& VEHICULAR
DROP OFF



SITE PERIMETER
LANDSCAPE BERMS



MULTI-USE PATH/
SIDEWALK

PEOPLE MOVER: Progress Photos (LAWA)



PEOPLE MOVER: Progress Photos (LAWA)



PEOPLE MOVER: Progress Photos (LAWA)





Airport Metro Connector (AMC) Station: Project Status

- Much of the advanced utility work, which began in 2020, for the project has been completed, and should there be any other work needed, there would be minimal public impact.
 - Moreover, the bulk of the heavy construction will take place within a closed construction area.
- Major construction of the Airport Metro Connector project is currently anticipated to begin early 2022 and the estimated completion year is 2024.
 - The timeline for the start of major construction is somewhat depending upon the completion of the C/LAX Transit Project.
- Due to construction on the AMC station, the Crenshaw/LAX rail will open with an initial operating segment from the Expo/Crenshaw Station to the Westchester/Veterans Station and back and will include a 'bus bridge' (shuttle) to connect stations.
- Metro Micro service
- Because the APM and AMC projects are adjacent, Metro coordinates with LAWA regularly on construction, logistics and timelines.

Rail to Rail (Active Transit Corridor) Project

- Segment A is a biking and walking path connecting the future Fairview Heights Station and Slauson Station at the A Line.
- The Rail to River project began initial construction work in February 2021.
- Project currently in procurement. Anticipated major construction start date is early 2022.

Vermont Transit Corridor

- Approximately 12.4 miles from Hollywood Bl to 120th St
- Second busiest bus corridor
 - 45,000 daily boardings (pre-Covid)
- Connects to 4 Metro rail lines and several bus lines
- Serves many key activity centers including several educational and cultural institutions
- Heavily congested with varying ROW (80 ft to 200 ft including sidewalks)



Vermont Transit Corridor-Goals and Objectives

- Improve service performance
 - Reduce passenger travel time
 - Improve service reliability
 - Increase ridership
- Enhance customer experience
 - Better passenger amenities
 - Improve pedestrian/bicycle access
- Invest in the community
 - Improve mobility & livability



Background and Status

- Measure M Project - \$425M
- February 2017
 - Completed Vermont BRT Technical Study
- April 2019
 - Vermont Transit Corridor Rail Conversion/Feasibility Study
 - Board directed staff to:
 - Advance BRT and rail alternatives into environmental
 - Conduct feasibility study looking at extending corridor south to Silver Line PCH transitway station (separate procurement)
- October 2020
 - Issued environmental RFP for BRT and rail alternatives (since cancelled); public outreach issued as separate contract using Communications Bench in Jan 2021
- Fall 2021
 - Begin CBO & Community Outreach to help inform the next phase of planning

Thank You

Contact Us

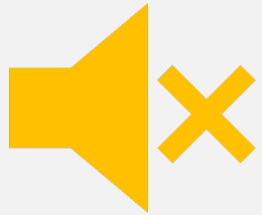
laxconnector@metro.net

213.922.4998

Using Zoom & Submitting Questions



This meeting is being recorded. Video file will be posted on our web site at **metro.net/crenshaw**



Public video and mics are disabled. We cannot hear you or see you.



Please ask questions and submit comments via the Q&A feature.



Q&A

Thank You, Please Connect With Us



213.922.2736



crenshawcorridor@metro.net



metro.net/crenshaw



@crenshawrail



crenshawrail