

# Next stop: more rail.

## CRENSHAW/LAX TRANSIT PROJECT



Community Leadership Council Meeting

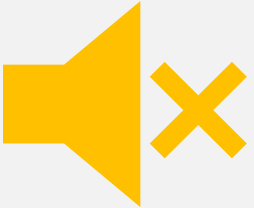
September 8, 2021 | 6 PM



# Using Zoom & Submitting Questions



This meeting is being recorded. Video file will be posted on our web site at [metro.net/crenshaw](https://metro.net/crenshaw)



Public video and mics are disabled. We cannot hear you or see you.



Please ask questions and submit comments via the Q&A feature or text us.



Q&A



Raise Hand



Chat

# Tell us about you!

Using the chat feature, and if you feel comfortable – tell us about you!

- Your name
- Organization or Neighborhood
- What's your nearest station?

# Welcome, thank you for joining us!

Welcome and Introductions

**Arna Fulcher**, CLC Co-Chair  
**Armen Ross**, CLC Co-Chair

Project Overview

**Annette Cortez**, Community Relations Manager

Construction Update

**Stephanie Leslie**, Deputy Executive Officer

Train Testing & Communications  
Update

**Mark Van Gessel**, Deputy Executive Officer

Metro Photo Enforcement  
Program

**Abdul Zohbi**, Systems Safety Manager

Airport Metro Connector

**Brett Roberts**, Community Relations Manager

Business Support Programs

**Jessica Spearman**, Principal Transportation Planner  
**Sidney Urmancheev**, Transportation Associate

Eat Shop Play Program

**Jesus Galeno**, Transportation Associate

Moderation / Q&A

**Ginny Brideau**, Community Relations Manager



# Project Overview

## Walsh Shea Corridor Constructors (WSCC)

### Main Line & Stations Contractor

- 8.5-mile light-rail servicing the Cities of Los Angeles, Inglewood and El Segundo
- 8 new stations:
  - 1 aerial
  - 4 at-grade
  - 3 underground
- Life of Project Budget: \$2.148 Billion



# Project Overview

- Project has reached 99% completion
- All civil elements of construction completed including
  - Bridges
  - Retaining walls
  - Tunnels
  - Trackwork
  - Structural elements of all 8 stations
  - All traction power substations providing power to the light-rail vehicles have been powered up
- Remaining construction work includes
  - Systems work
  - Minor station work



# Underground Station Construction

## Underground Station Construction

- Expo/Crenshaw Station
- Martin Luther King Jr. Station
- Leimert Park Station

## Ongoing Construction Activities

- Electrical and communications systems work
- Station plaza features installation



# Expo/Crenshaw Station



EXPO STATION – Delivering trees in preparation for planting at the plaza level

# Expo/Crenshaw Station



# Expo/Crenshaw Station



EXPO STATION – Continue digging and planting foliage and trees throughout the northeast section of the station plaza

# Expo/Crenshaw Station



EXPO STATION – Continue stainless steel cladding panel installation to the main entrance plaza roll-up door

# Expo/Crenshaw Station



EXPO STATION – Continue art glass panel installation around the perimeter of the main entrance canopy

# Expo Station Mural – Circumsolar, Migration 4 / At the Same Time



CircumSolar, Migration 4 by Rebeca Méndez



At the Same Time – Rebeca Méndez

# Martin Luther King Jr Station



MLK STATION – Bike storage lockers at the plaza

# MLK Station Mural – Only Light, Only Love



# Leimert Park Station



# Leimert Park Station



LEIMERT PARK STATION – Resume stainless steel cladding panel installation at the main entrance plaza roll-up door

# Leimert Park Station



LEIMERT PARK STATION – Preparing for signal band installation above the main entrance coiling door at the plaza

# Park Mesa Heights At-Grade Segment

Crenshaw Bl between 48th St and 59th St

## City of Los Angeles Street Restoration Work

- Roadway resurfacing of mid-block areas
- Full depth roadway construction
- On-street public parking impacts
- Ongoing lane closures
- Pedestrian access occasionally restricted and rerouted
- Temporary bus stop and route relocations



# Hyde Park Station



# Hyde Park Station



# Hyde Park Segment Tunnel / Cut and Cover

Crenshaw Bl between 59<sup>th</sup> St to 67<sup>th</sup> St



Landscaping at train portal along northbound Crenshaw Bl near 60th St

## Construction Status

- Final street restoration was completed
- Outstanding work:
  - Additional minor utility work
  - Tree Planting



# Off-Crenshaw BI Tree Planting



Tree Planting along Slauson Av



Tree planting in surrounding neighborhoods

# Hyde Park Station



HYDE PARK STATION – Porcelain enamel steel art panel being prepared for installation

# Hyde Park Station



# Downtown Inglewood Station



Applying the anti-graffiti coating to the edges of the map cases at the La Brea Station

# Downtown Inglewood Station



# Downtown Inglewood Station

Florence Av at La Brea Av to Hillcrest Bl



Installed art on service building and station platform

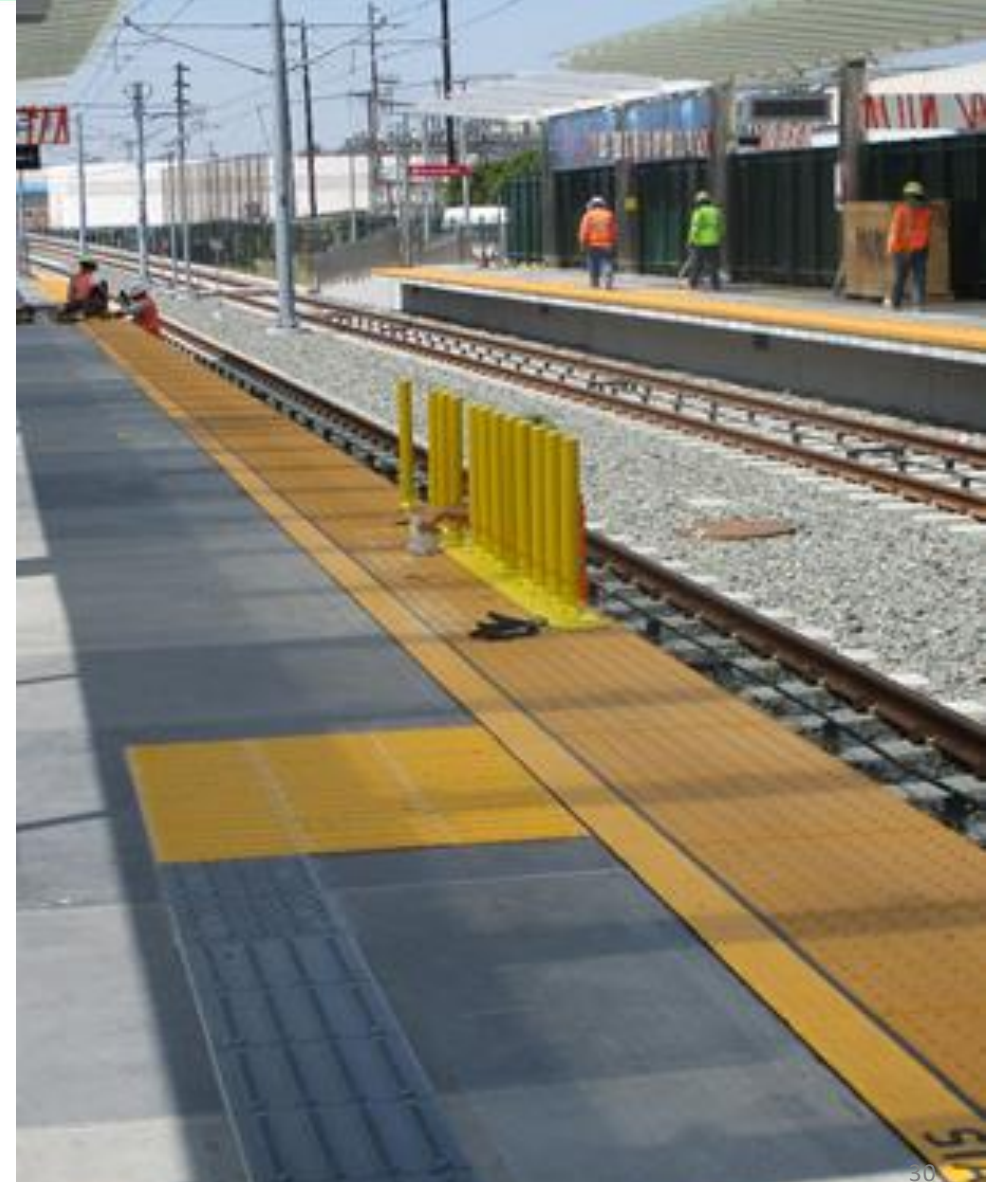
# Westchester/Veterans Station



Westchester/Veterans Station wind screen frame mounting

# Westchester/Veterans Station

Florence Av at Hindry Av



Installed art and “between car barriers” on station platform

# Aviation/Century Station

Aviation Bl at Century Bl



Looking easterly at station entrance at Aviation Bl/Century Bl

# Aviation/Century Station Area



Work crews applying anti-graffiti coating to the Century Bridge

# Green Line Wye



Work crews applying anti-graffiti coating to the Green Line Wye

# Green Line Bridge



Green Line Bridge Checking Fastener Bolt Torque

# Train Testing

## Train Testing

- On-going train testing
- Installation, testing, and commissioning of train systems
- Train testing through intersection signalization
- Train controls to assure safe separation of trains
- Crenshaw/LAX has over 8,000 individual points to be monitored and controlled by Metro's Rail Operations Center



Train testing along Crenshaw Bl near 57th St



Train Clearance Testing at Westchester/Veterans Station



Southwest Yard Maintenance Facility

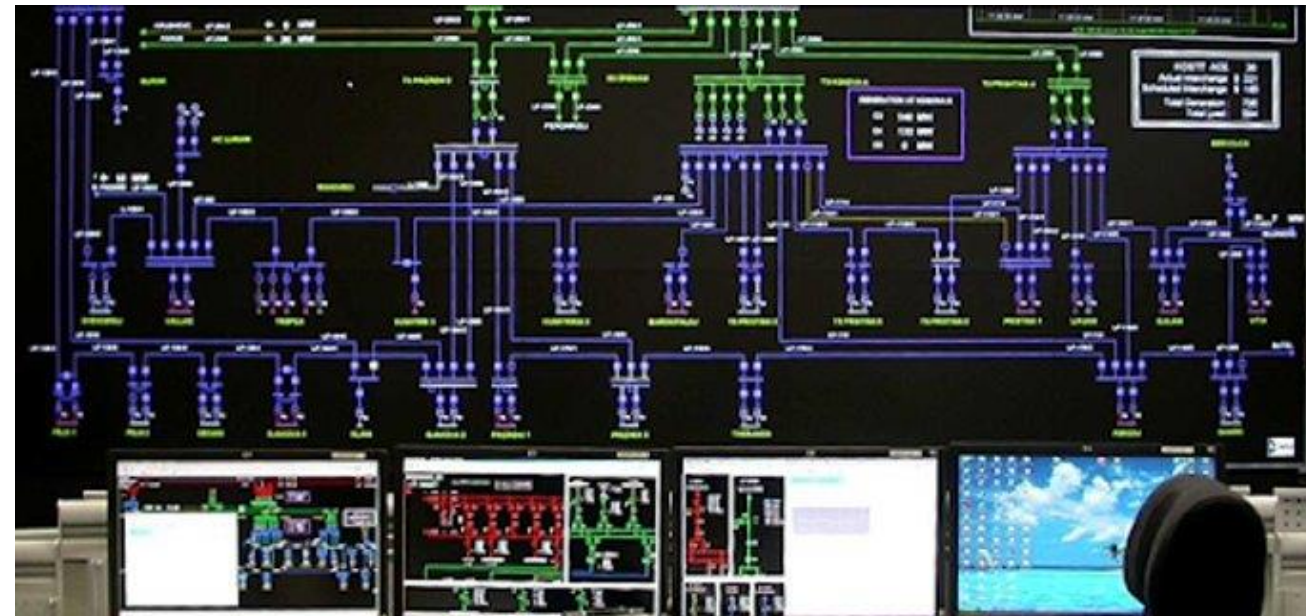
# Communications Systems

## Systems Integration Testing

- Installation of equipment for fiber optic and the Supervisory Control and Data Acquisition (SCADA) system, a key safety feature that allows Metro's Rail Operations Center (ROC) to monitor the alignment
- Testing that systems integrate during an emergency, ensuring systems function individually and together
- Train testing at all intersections ensuring that speeds are transmitted to the power sources
- Radio testing of fire, police, operations, and maintenance channels
- Emergency control panel installation and testing at seven key locations



Crews performing system integration testing



Supervisory Control and Data Acquisition (SCADA)

# Communications Systems



Emergency Management Panels (EMP)

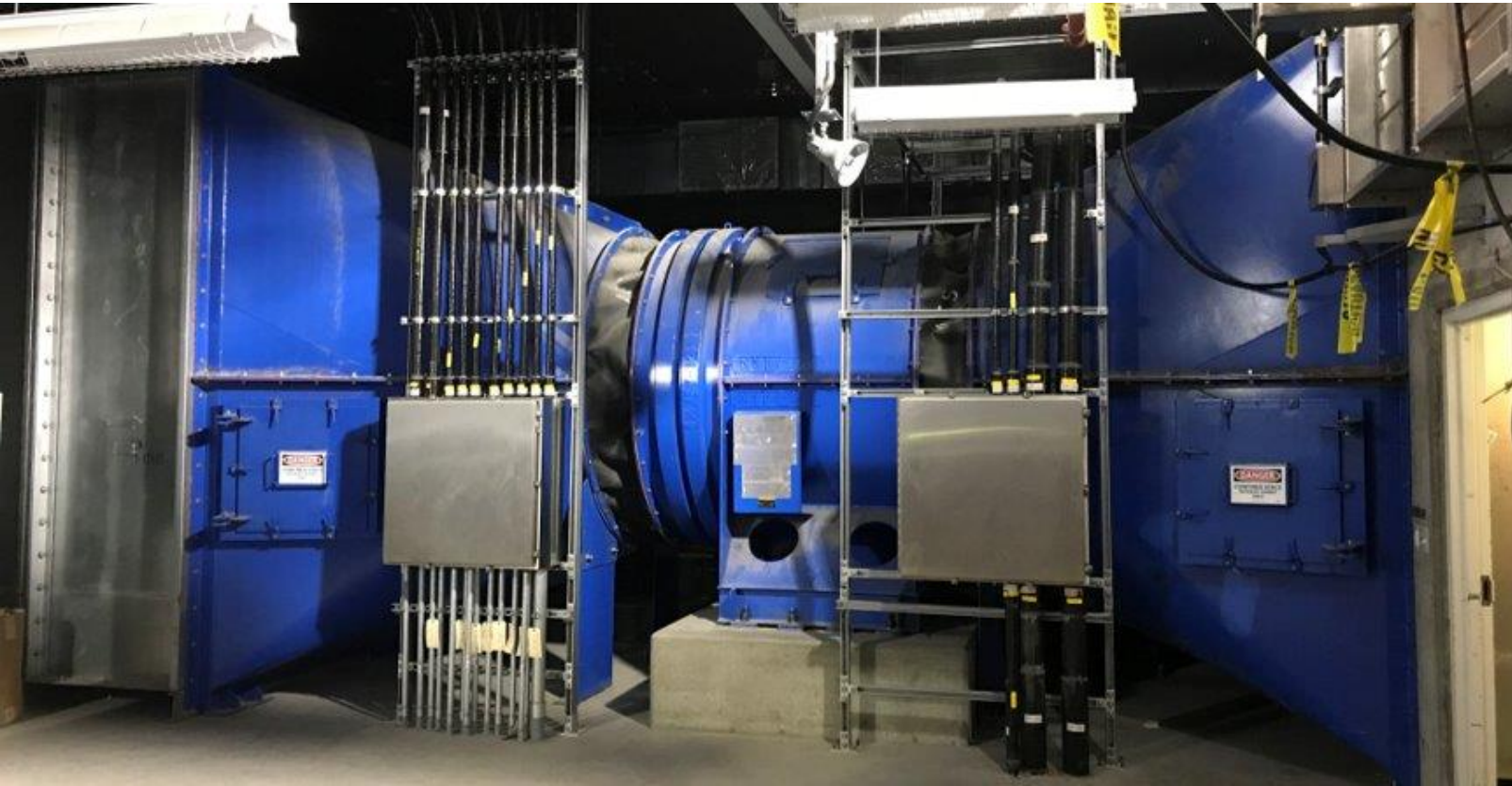
# Electrical System



# Ventilation Systems

## Underground Ventilation Systems

- Testing of underground specialized systems like booster fans (jet fans) for air circulation
- Emergency ventilation fans



Installation of fans




# Remaining Work to Accomplish

- Installation, testing and commissioning of various train systems
- Train testing through intersection signalization
- Train controls to assure safe separation of trains
  - Local Field Acceptance Tests and Systems Integration Test
- Power: both traction power and auxiliary power for lighting, HVAC, elevators and escalators, passenger information system
- Underground ventilation systems
- Communications System

# Metro Photo Enforcement Program

- **September 1, 2021:** Outreach efforts begin
- **October 1, 2021:** One month warning period begins
  - Traffic violation warning notices issued by LA Sheriff Dept for traffic signal violations
  - Metro administers the program and the LA Sheriff's Dept manages the citation issuance and Court representation.
- **November 1, 2021:** Traffic citations issued
  - motorists who disobey traffic signals and operate vehicles in an illegal manner will begin receiving traffic citations in the mail.
  - Citations on the Metro program average \$100 plus penalties and assessments




 Los Angeles County Metropolitan Transportation Authority      One Gateway Plaza Los Angeles, CA 90012-2952      213.922.2000 Tel metro.net

**Metro**

**Traffic Violation Warning Notice**

Los Angeles County Sheriff's Department  
Transit Policing Division



The Los Angeles County Metropolitan Transportation Authority (Metro) and the Los Angeles County Sheriff's Department are dedicated to reducing the number of accidents, injuries, and fatalities associated with red light violations. In that regard, Metro and the Sheriff's Department have implemented a Photo Safety program to monitor and enforce violations at the Metro transit system crossings.

The Program employs an automated traffic enforcement camera system. The cameras record violations as they occur during the red phase of the traffic signal. The camera systems generate high quality photographs of the violation. Superimposed on each photograph are the date, time, location, amber time, and the length of the red signal.

The violation was photographed on **{DATE}** at **{TIME}** by the automated traffic enforcement camera system. The vehicle with the license plate **{ABC123}** which is registered in your name, was photographed **{Red Time}** seconds after the red light was activated at the intersection of **{Location}** on the Crenshaw Line.

This is a warning only. This notice does not require a response from you. The Crenshaw Line Photo Enforcement Program is issuing warnings only from **October 1, 2021 to October 31, 2021. Effective November 1, 2021, actual Citations will be mailed out to violators.** We encourage you to discuss this information with anyone who drives your vehicle. Disobeying traffic control devices is a serious offense that can have fatal consequences.

If you have any questions regarding this warning notice, please contact the Traffic Violations Bureau toll free at (877) 786-7234, Monday through Friday between the hours of 8:00 a.m. and 5:00 p.m., excluding holidays.

Para instrucciones en Español por favor llame al telefono (877)-786-7234.

Los Angeles County Sheriff's Department  
Transit Policing Division  
Photo Enforcement Unit

**THIS IS NOT A CITATION**

Sample Warning Enforcement Letter

# Metro Photo Enforcement Program

## Crenshaw Bl between 48th St and 59th St

- Left-turn movements from Crenshaw Bl at train crossings onto side streets will be enforced by cameras
- Metro's contractor (Redflex) manages the operation and maintenance of the system
- Photo Enforcement Program has been implemented on the A Line (Blue), L Line (Gold), G Line (Orange), and E Line (Expo)



Left turn cameras on Crenshaw between 48<sup>th</sup> St and 59<sup>th</sup> St



# Metro Photo Enforcement Program

Crenshaw Bl between 48th St and 59th St

## Photo Enforcement Program Safety

- Aimed to improve vehicular and pedestrian safety and mitigate potential train and auto accidents associated with red-light violations at highway rail-grade crossings
- Together with Engineering, Education and Enforcement we've managed to reduce our left turn accidents by over 60%
- The system will be installed on all future light rail lines where dedicated Left Turn Lanes exist



Traffic Enforcement Camera and Warning Sign at the Metro L (Gold) Line

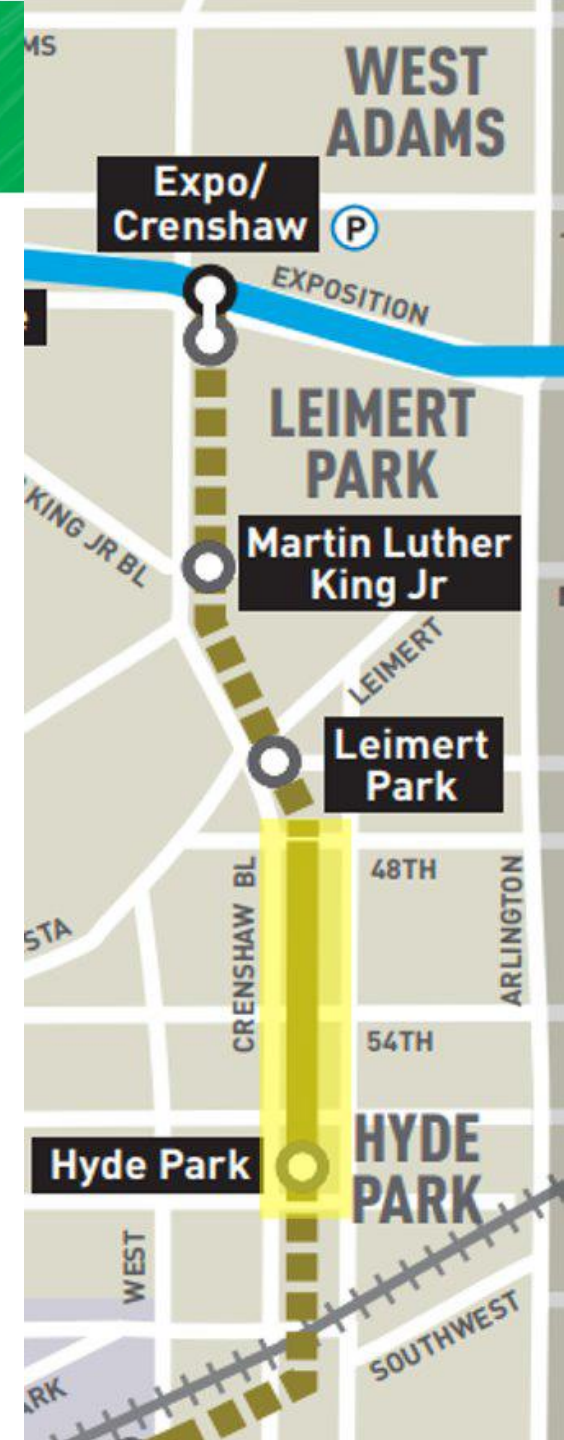


# Metro Photo Enforcement Program

Crenshaw Bl between 48th St and 59th St

## Crenshaw Bl Left Turn Signal Intersections

- Cameras are installed at the at-grade train crossings along Crenshaw Bl between 59<sup>th</sup> and 48<sup>th</sup> St:
  - Southbound Crenshaw to 48th St East
  - Southbound Crenshaw to 52nd St East
  - Northbound Crenshaw to 52nd St West
  - Southbound Crenshaw to 54th St East
  - Northbound Crenshaw to 54th St West
  - Northbound Crenshaw to 57th St West
  - Southbound Crenshaw to Slauson East
  - Northbound Crenshaw to Slauson West
  - Southbound Crenshaw to 59th St East
  - Northbound Crenshaw to 59th St West



# Metro Photo Enforcement Program

## Community Outreach

- On **September 1st, 2021**, one month in advance of program implementation, Metro implemented a robust outreach program including:
  - Briefings
  - Presentations
  - Digital media
  - Posted on Next Door
  - Media Relations
  - Paid media buys consisting of print and radio media
  - Door-to-door notice distribution
  - E-mail blasts to CLAX Stakeholder email lists



Traffic Enforcement Camera at the Metro L (Gold) Line

# Airport Metro Connector (AMC) Station Overview



## Airport Metro Connector (AMC) Station Overview



- June 2014, Board approved adding a station to the Crenshaw/LAX Line at Aviation Bl/96th St.
- Will connect Los Angeles International Airport (LAX), with the Airport Metro Connector Transit Station (AMC) at Aviation Bl/96th Street.
- Once in operation, riders will transfer quickly and easily between LAX and Metro's network.
- AMC Station will be located on the future Crenshaw/LAX Transit Project, and will include:
  - Bus plaza
  - Bicycle parking
  - Customer service center, passenger pick-up and drop-off area
  - Commercial area for retail tenants
- Estimated project budget is \$898M.

# Airport Metro Connector (AMC) Project Location

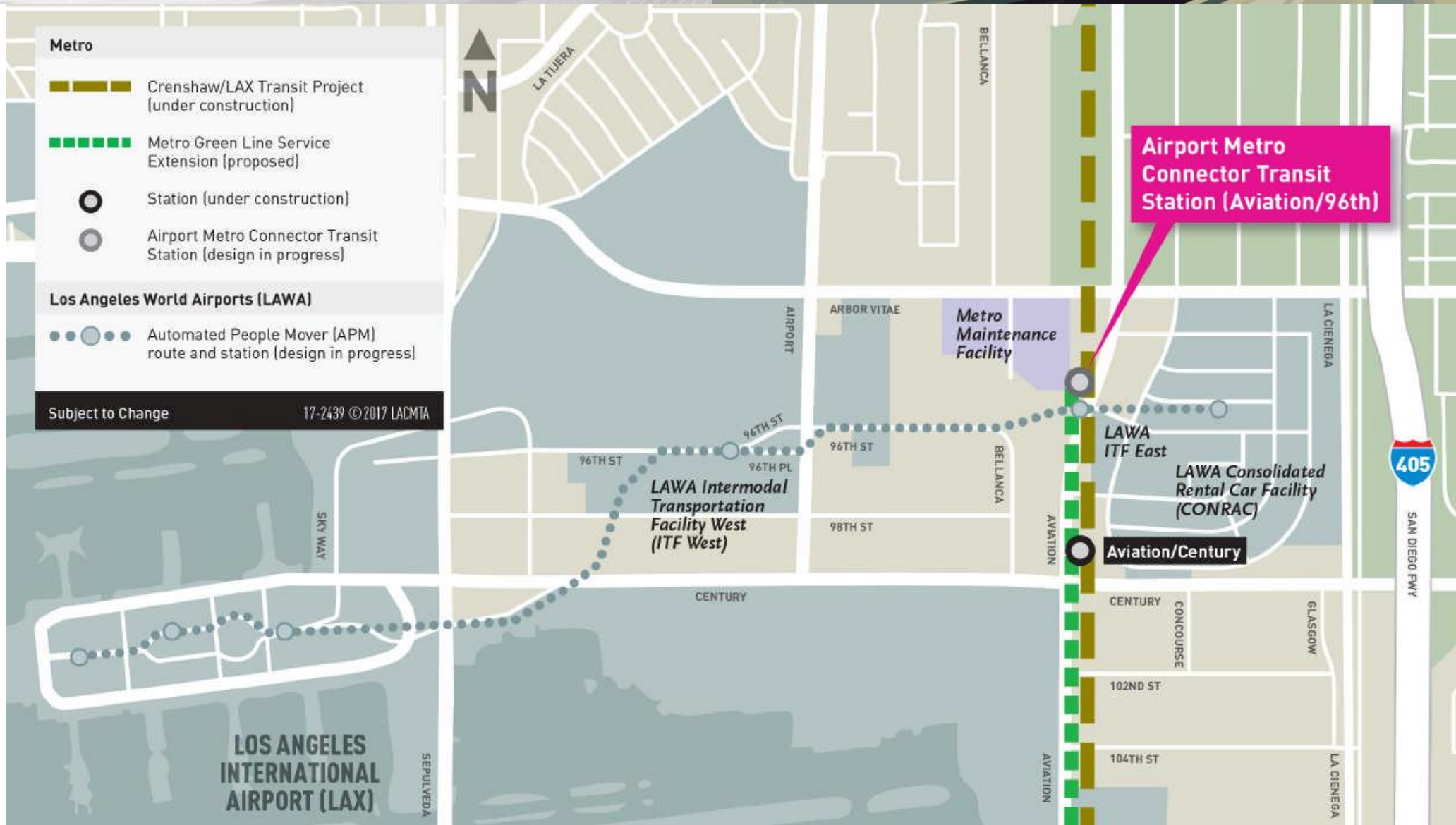


**CRENSHAW LINE**

**AMC STATION**

**LAX**

# Airport Metro Connector (AMC) Project Features

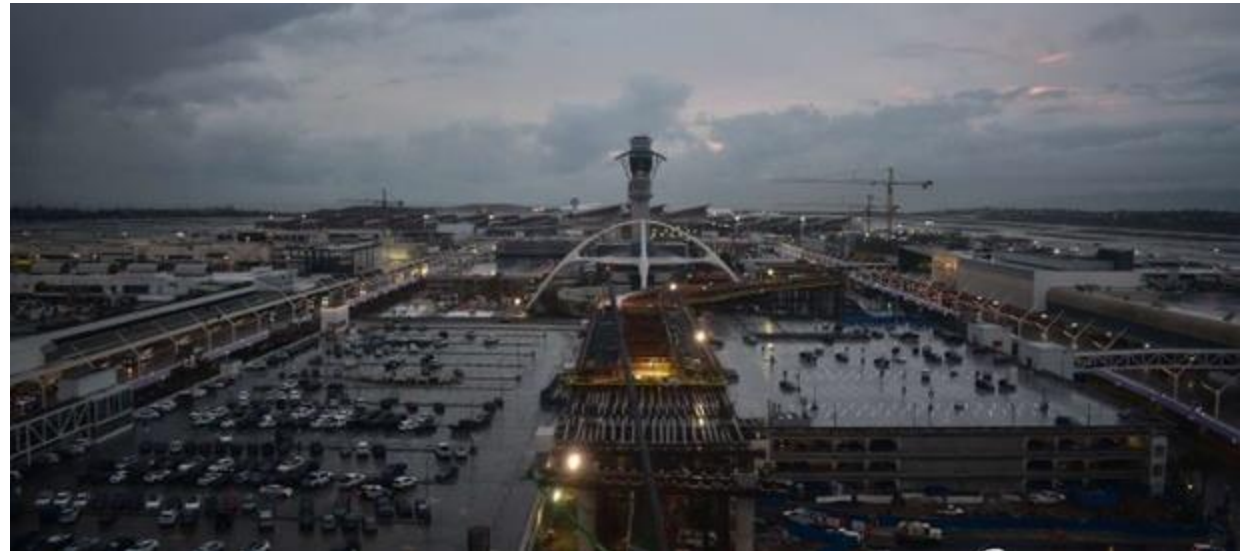
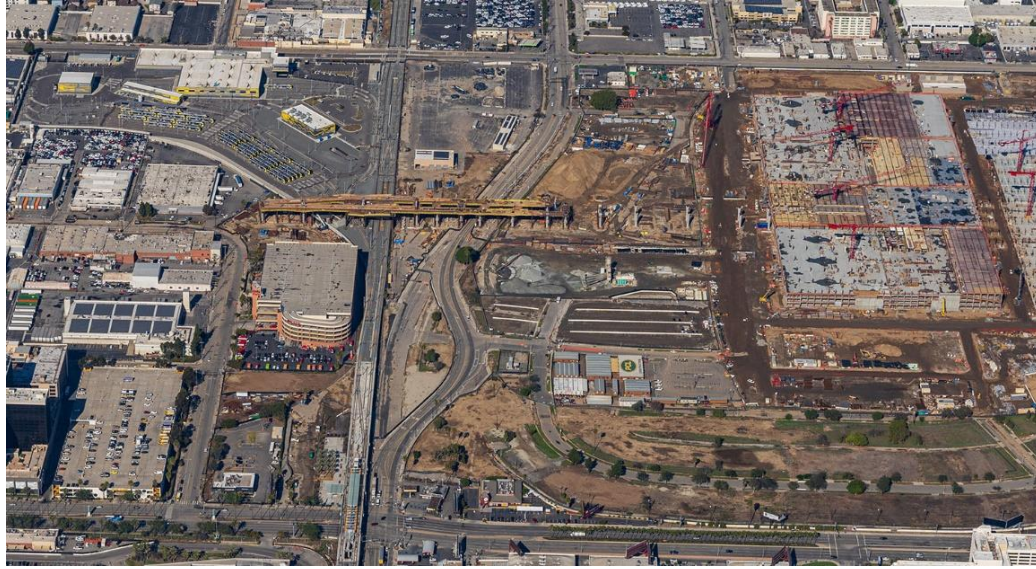


# Airport Metro Connector (AMC) Project Rendering



# PEOPLE MOVER

## Progress Photos (LAWA)



## Airport Metro Connector (AMC) Station Project Status



- Much of the advanced utility work, which began in 2020, for the project has been completed, and should there be any other work needed, there would be minimal public impact.
  - Moreover, the bulk of the heavy construction will take place within a closed construction area.
- Major construction of the Airport Metro Connector project is currently anticipated to begin early 2022 and the estimated completion year is 2024.
  - The timeline for the start of major construction is somewhat depending upon the completion of the C/LAX Transit Project.
- Due to construction on the AMC station, the Crenshaw/LAX rail will open with an initial operating segment from the Expo/Crenshaw Station to the Westchester/Veterans Station and back and will include a 'bus bridge' (shuttle) to connect stations.
  - Metro Micro service
- Because the APM and AMC projects are adjacent, Metro coordinates with LAWA regularly on construction, logistics and timelines.



**Airport Metro Connector (AMC) Station**



# Thank You

Contact Us

**For general questions:**

[\*laxconnector@metro.net\*](mailto:laxconnector@metro.net)

213.922.4998

# Metro Small Business Pilot Programs

*Help small “mom and pop” businesses continue to thrive throughout construction and post construction*

## Metro Business Solution Center (BSC)



## Metro Business Interruption Fund (BIF)



# Business Solution Center Crenshaw/LAX Transit Project

## BSC Business Resources:

- Hands-on business development
- Expert business advice and coaching
- Technical assistance
- Referrals to expert professionals

## BSC Program Statistics – through Q2 2021:

- Number of business Contacts: **479**
- Number of business Intakes/Assessments: **363**
- Number of business referrals: **1145**

Small Business Week Events About Us Services Contact

**M Metro**

CRENSHAW/LAX TRANSIT PROJECT  
BUSINESS SOLUTION CENTER

Learn More About the BSC...

**The Metro Crenshaw/LAX Transit Project Business Solution Center**

Metro's Pilot Business Solution Center (BSC) provides hands-on business assistance and support services to small businesses along the Crenshaw/LAX corridor during the four-year term of the Crenshaw/LAX Transit Project. Small businesses along the corridor have access to the BSC for business and technical assistance including business development services and referrals to partnering business resource providers ([read more...](#)).

# Business Solution Center COVID-19 Support

## Support for businesses during COVID-19 Pandemic:

- Continued services via phone call, email and safely performed site visits throughout duration of the pandemic
- Small business administration
  - SBA contact for outreach/support
  - Disaster loan funding
  - PPP funding
- Los Angeles Urban League micro grants
  - Grants between \$2,000 - \$5,000
  - Over 10 grants awarded for more than \$35,000
- Others



# Metro's Business Interruption Fund



## BIF Information and Eligibility

- Financial assistance to small “mom & pop” businesses with 25 or fewer full-time employees directly impacted by Metro Rail construction along three project areas:
  - Crenshaw/LAX Transit Project
  - Purple Line Extension, Sections 1, 2 & 3
  - Regional Connector Project, Little Tokyo area & 2nd/Broadway Segment\*
- Businesses must be located immediately adjacent to the rail corridor and meet other eligibility requirements
- Grant amounts are determined by business revenue loss directly related to period of Metro construction disruption
- Businesses may receive up to \$50,000 per impact year



\*Segment eligibility based on full street closure with duration greater than six continuous months. Eligibility ended 6/30/17.

# Metro's Business Interruption Fund

Metro's Business Interruption Fund (BIF) is **accepting applications** for transit rail **construction impact** along the Crenshaw/LAX Transit Project, the Little Tokyo area of the Regional Connector and Sections 1, 2 and 3 of the Purple Line Extension **sustained from March 20, 2020, forward** (during the COVID-19 pandemic).

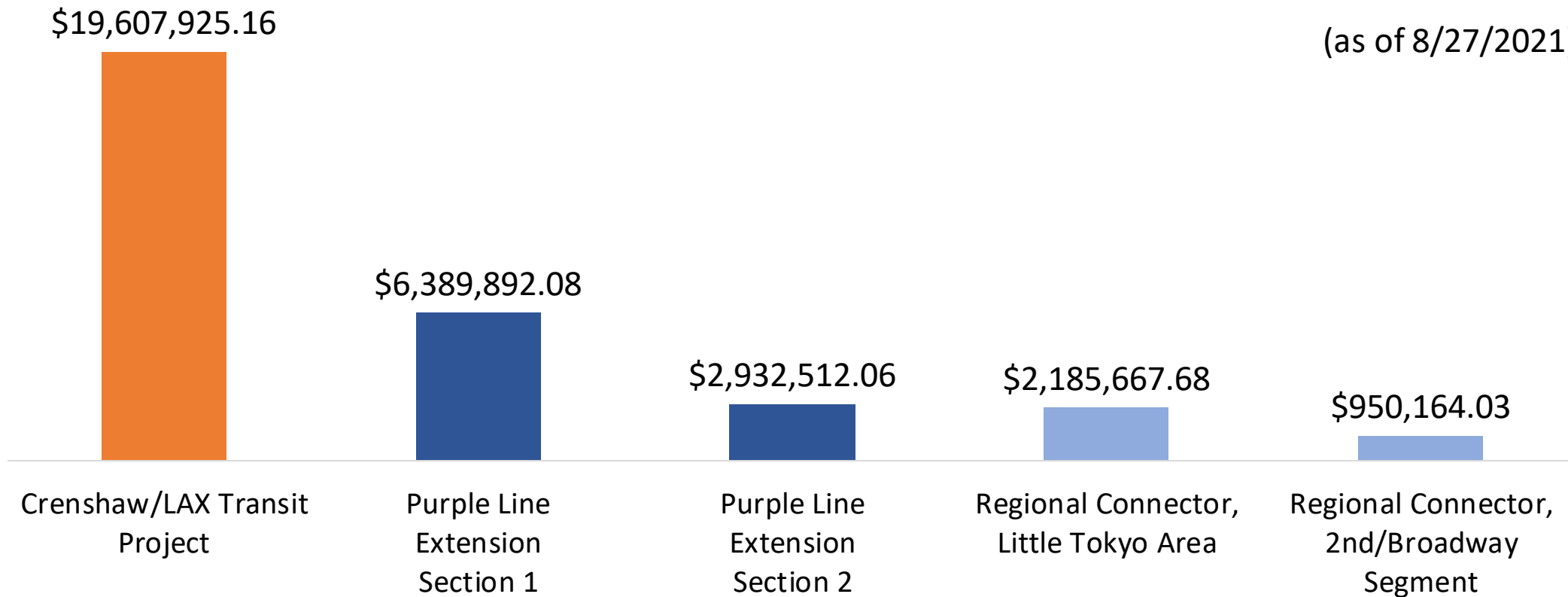
- **Small** “mom and pop” **businesses** that experienced transit rail construction impact during the COVID-19 pandemic **may be eligible**.
- Potentially eligible small business owners may *contact BIF Fund Administrator Pacific Coast Regional at 213.739.2999 x223 or Metro at [bif@metro.net](mailto:bif@metro.net)*.

# Metro's Business Interruption Fund

Value of BIF Grants Awarded:  
\$32,066,161.01\*



(as of 8/27/2021)



\*BIF Grants do not cover COVID-19 related impacts.

# Business Interruption Fund

## Crenshaw/LAX Transit Project



### BIF Program Statistics – August 27, 2021:

- BIF applications submitted: **1540**
- BIF applications approved: **1279**
- BIF applications pending financials: **134**
- BIF applications deemed not eligible: **125**
- BIF applications denied: **2**
- BIF Grants Awarded: **1270**
- BIF Grant Payments: **\$32,066,161.01**

### Crenshaw/LAX – BIF Statistics:

- **779** grants awarded to **C/LAX**
- Total amount: **\$19,607,925.16**
- **232** small businesses received a grant

# Business Interruption Fund Crenshaw/LAX Transit Project



Learn More: [Crenshaw Medical Center Spotlight](#)

# Eat Shop Play Crenshaw & Inglewood

Eat Shop Play has been highlighting local mom and pop businesses in Crenshaw and Inglewood, especially eateries and specialty businesses operating pick-up and delivery during the past months.

The Eat Shop Play Crenshaw and Inglewood programs continue supporting local businesses as construction progresses by promoting them through regular social media posts and newsletters to over 14,000 community members.



# Social Media Posts



**Metro Crenshaw/LAX Transit Project**

August 17 at 12:00 PM · 🌐

Dulan's On Crenshaw is currently being remodeled, but you can still get your soul food fix at their Dulanville food truck stationed in front.

#EatShopPlay #Crenshaw

Support Local Businesses

<https://bddy.me/37NvgvA>



August 2021 Twitter Spotlight



**Metro Crenshaw/LAX Transit Project**

August 20 at 12:00 PM · 🌐

Throughout August, students that purchase a book at Malik Books or get a haircut at Hair Architects at Baldwin Hills Crenshaw will receive a free backpack, while supplies last. Hurry in because this offer is only available through the end of August!

#EatShopPlay #Crenshaw

Support Local Businesses

<https://bddy.me/3gkhe9l>



August 2021 Facebook Spotlight

# Featured Eat Shop Play Businesses

## Fernando Pullum Community Arts Center

- Provide master-level classes to local youth
- In-person and virtual classes available
- Provide unique learning and performing opportunities
- Their youth band performed at the 2020 Billboard Awards with BTS.

<https://www.pullumcenter.org/>

3351 W 43rd St, Los Angeles, CA 90008

Phone: (323) 292-2700



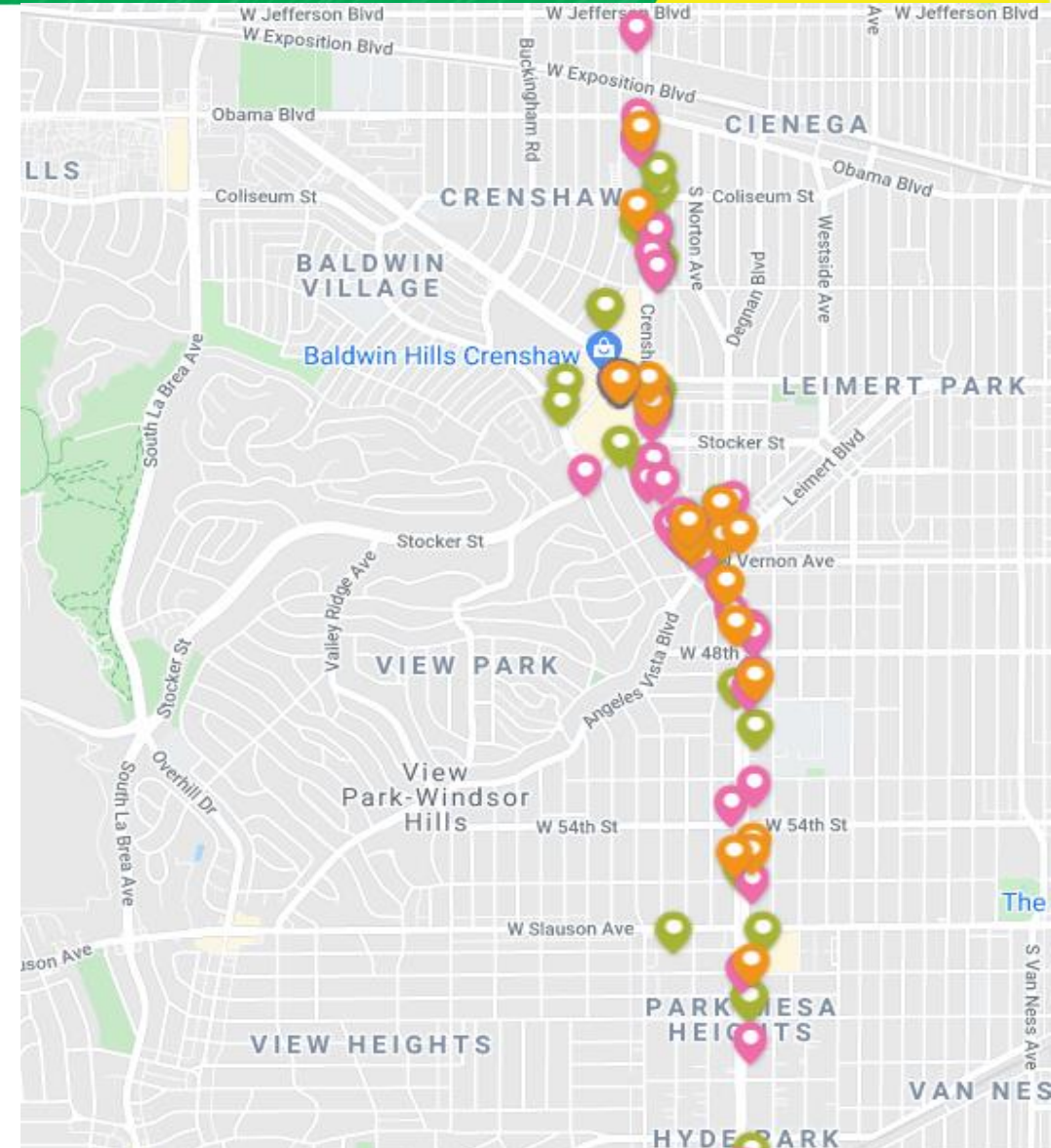
# Eat Shop Play

## ESP Business Spotlights:

- Metro Crenshaw/LAX Social Media Spotlights
- Regular Crenshaw/LAX Eat Shop Play email spotlights
- Referrals to Business Solution Center and Business Interruption Fund

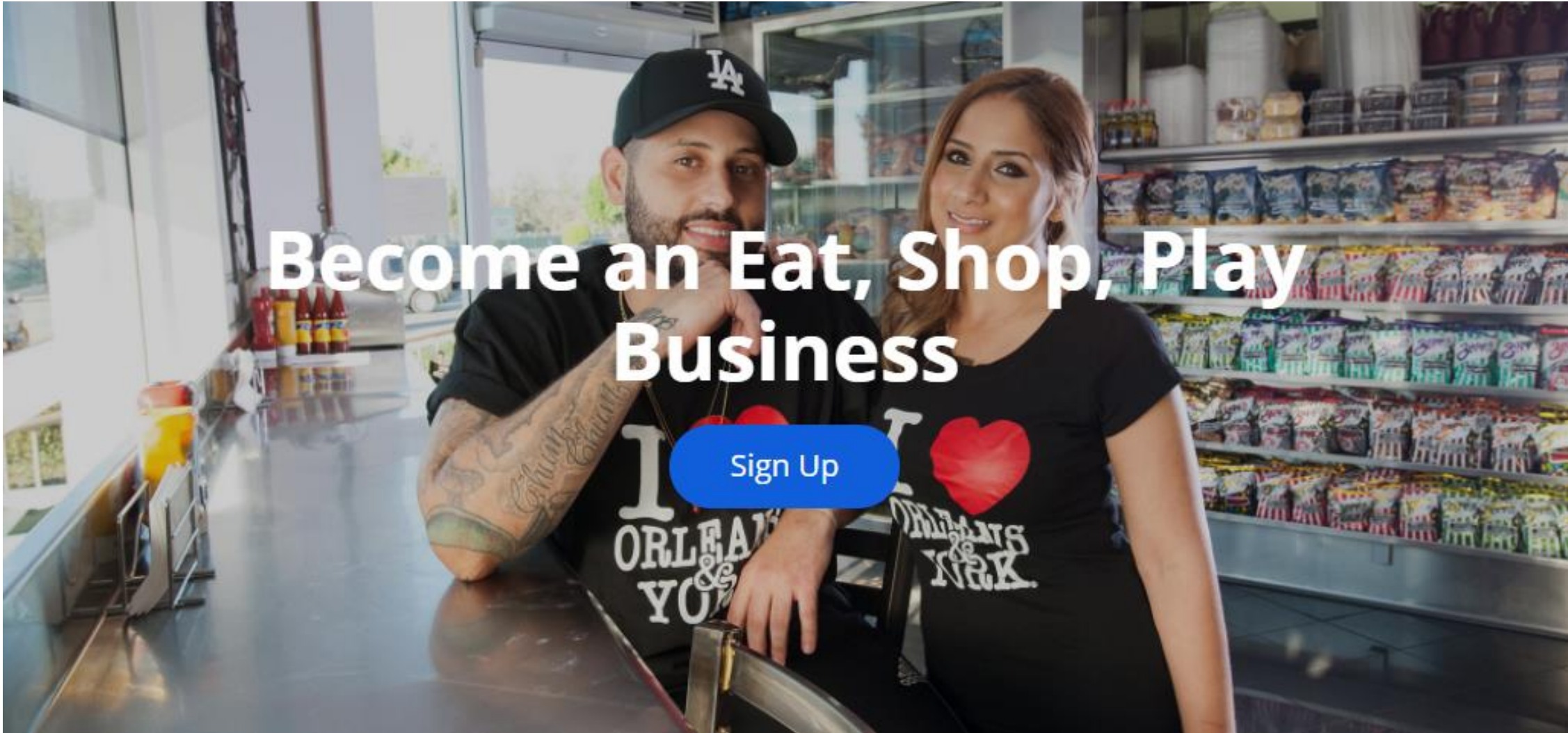
## ESP Program Statistics: July 2020 – July 31, 2021:

- Number of Crenshaw/LAX Eat Shop Play businesses: 96
- Eat Shop Play Social Posts: 71
- Eblasts & Newsletters 30
- Total Individual Business features: 150



Map of Crenshaw Eat Shop Play Businesses

# Enroll Your Business

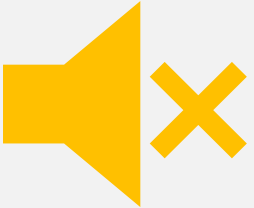


[metro.net/eatshopplay](https://metro.net/eatshopplay) | [eatshopplay@metro.net](mailto:eatshopplay@metro.net)

# Using Zoom & Submitting Questions



This meeting is being recorded. Video file will be posted on our web site at [metro.net/crenshaw](https://metro.net/crenshaw)



Public video and mics are disabled. We cannot hear you or see you.



Please ask questions and submit comments via the Q&A feature or text us.



Q&A



Raise Hand



Chat

# Thank You, Please Connect With Us



213.922.2736



*crenshawcorridor@metro.net*



*metro.net/crenshaw*



*@crenshawrail*



*crenshawrail*