

Next stop: more rail.

CRENSHAW/LAX TRANSIT PROJECT



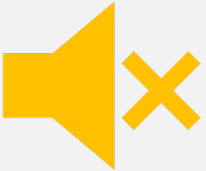
Virtual Construction Update Meeting

July 29, 2021 | 6 PM

Using Zoom & Submitting Questions



This meeting is being recorded. Video file will be posted on our web site at metro.net/crenshaw



Public video and mics are disabled. We cannot hear you or see you.



Please ask questions and submit comments via the Q&A feature or text us.



Q&A



Raise Hand



Chat

Tell us about you!

- In the chat box, let us know your name, neighborhood, or the organization you represent.
- If you are dialing in via cell phone, you can text in your questions. The number will be read aloud now.

Welcome, thank you for joining us!

Project Overview

Annette Cortez, Community Relations Manager

Project Update

Annette Cortez, Community Relations Manager
Ron Macias, Principal Community Relations Officer

Community Education

Jackie Gonzalez, Manager, Community Relations
Brittany Mullins, Principal Community Relations Officer

Business Support Programs

Sidney Urmancheev, Transportation Associate
Jessica Spearman, Business Interruption Fund Manager

Eat Shop Play Program

Jesus Galeno, Transportation Associate

Moderation / Q&A

Ginny Brideau, Community Relations Manager

Project Overview

Walsh Shea Corridor Constructors (WSCC)

Main Line & Stations Contractor

- 8.5-mile light-rail servicing the Cities of Los Angeles, Inglewood and El Segundo
- 8 new stations:
 - 1 aerial
 - 4 at-grade
 - 3 underground
- Life of Project Budget: \$2.148 Billion



Project Overview

- Project has reached 99% completion
- All civil elements of construction complete including
 - Bridges
 - Retaining walls
 - Tunnels
 - Trackwork
 - Structural elements of all 8 stations
 - All traction power substations providing power to the light-rail vehicles have been powered up
- Remaining construction work includes
 - Systems work
 - Minor station work



Southern Segment Update

Crenshaw Bl at 67th St through C Line (Green)

Four New Stations

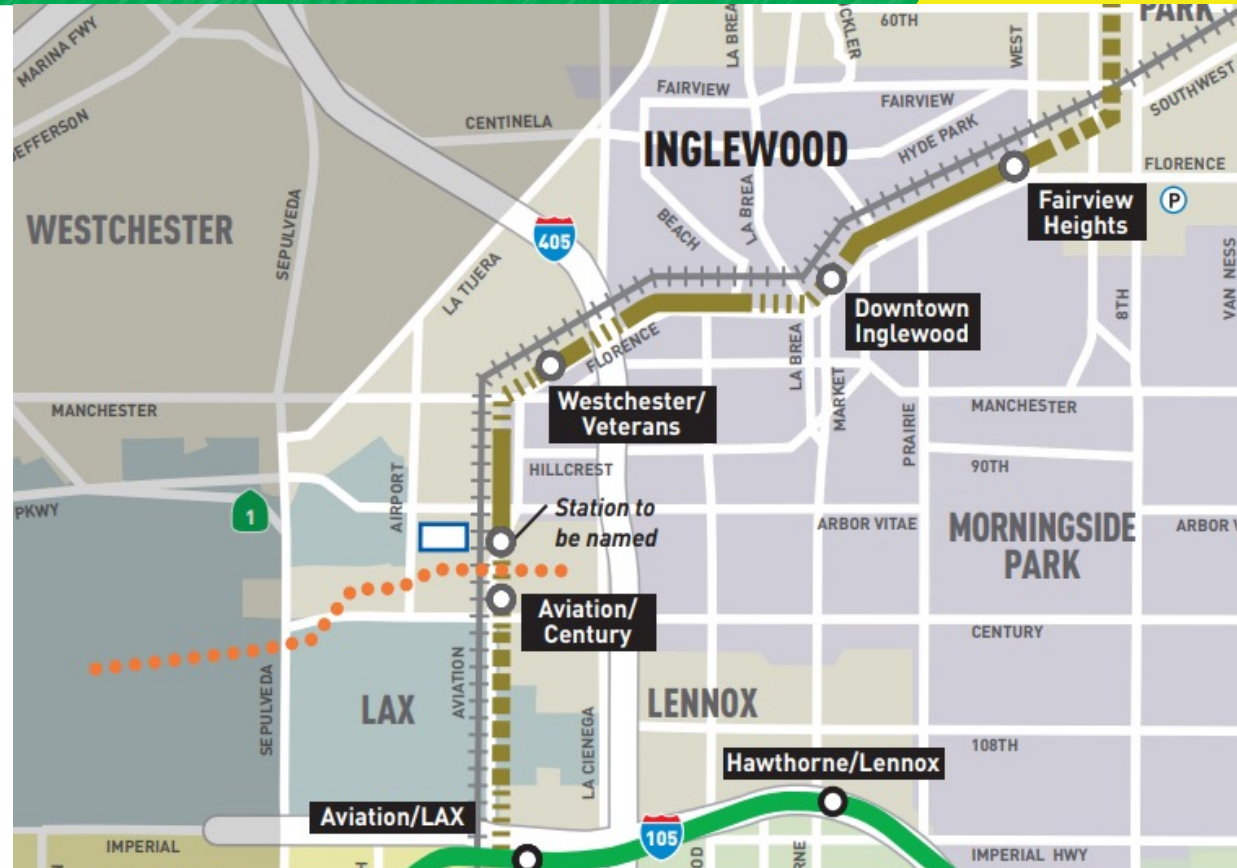
- One Aerial
- Three At-Grade

Five Aerial Structures

- 111th St
- Century Bl
- Manchester Av
- I-405 FWY
- La Brea Av

One Underground Structure

- Adjacent to LAX tarmacs at Aviation Bl and 111th St



Aviation Station/Metro C Line



Workers at the C Line/Crenshaw/LAX Wye track adding galvanized shim plates

Aviation/Century Station

Aviation Bl at Century Bl



Looking easterly at station entrance at Aviation Bl/Century Bl

Aviation/Century Station

Aviation BI at Century BI



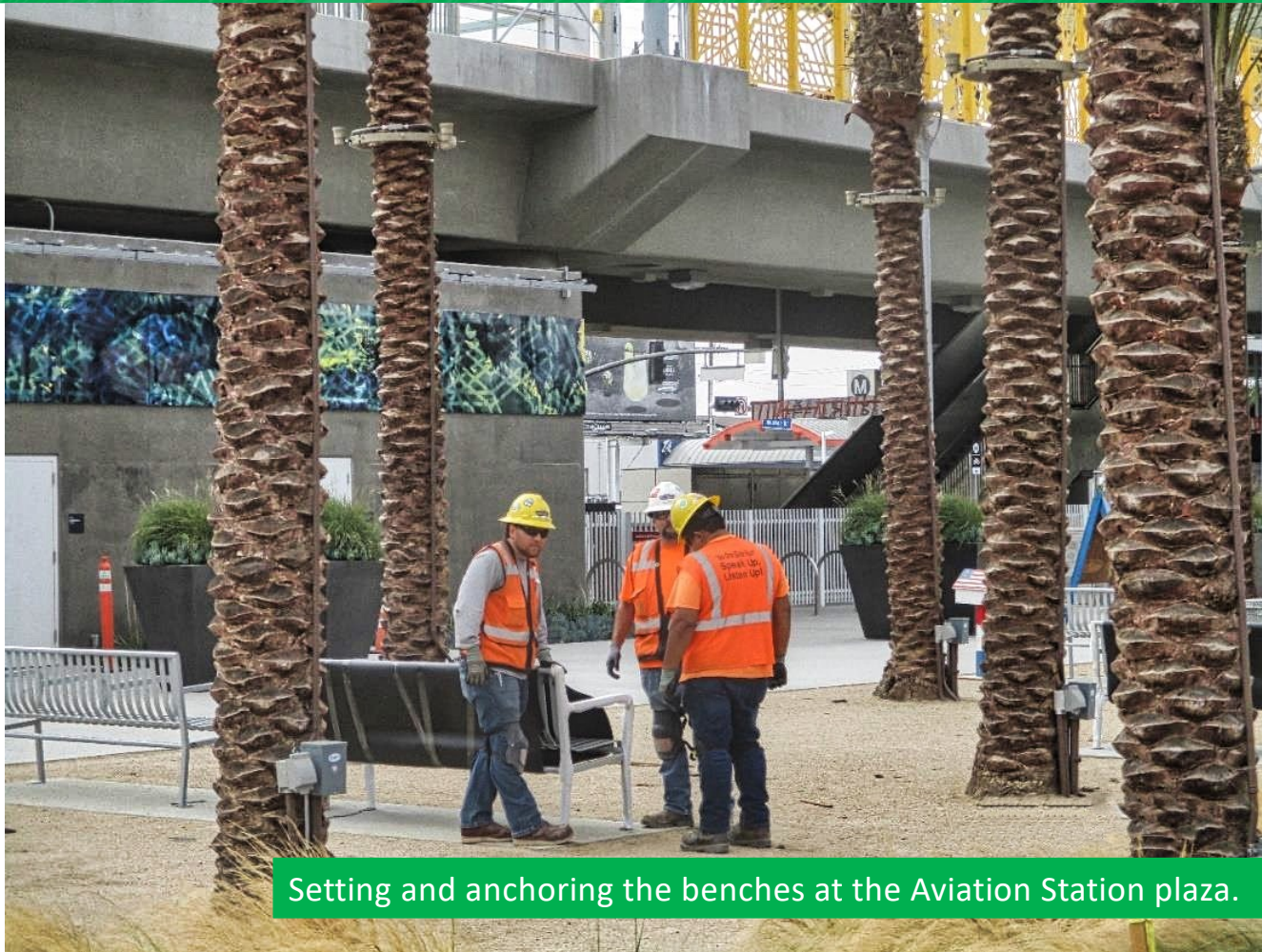
Workers applying the anti-graffiti covering to the Aviation Station Platform columns



Workers preparing & applying new surface to NB track plinths on Century/Aviation bridge.

Aviation/Century Station

Aviation BI at Century BI



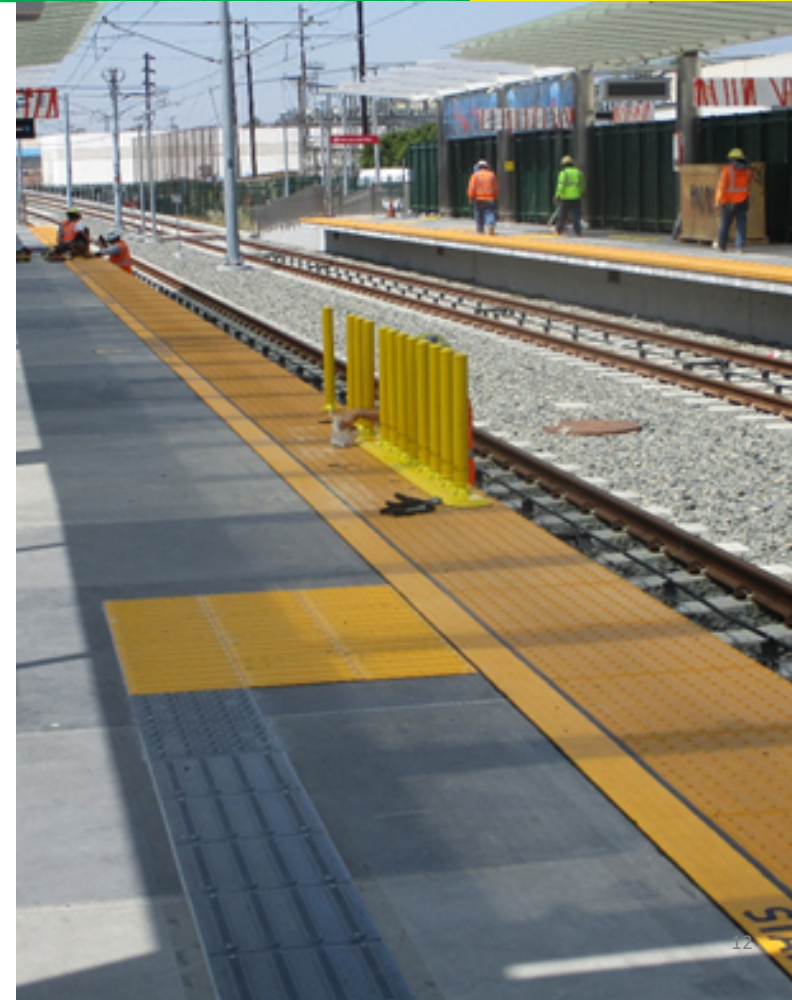
Setting and anchoring the benches at the Aviation Station plaza.

Westchester/Veterans Station

Florence Av at Hindry Av



Installed art and “between car barriers” on station platform



Westchester/Veterans Station

Florence Av at Hindry Av



Artwork and anti-graffiti covering application at the Westchester/Veterans station platform.

Downtown Inglewood Station

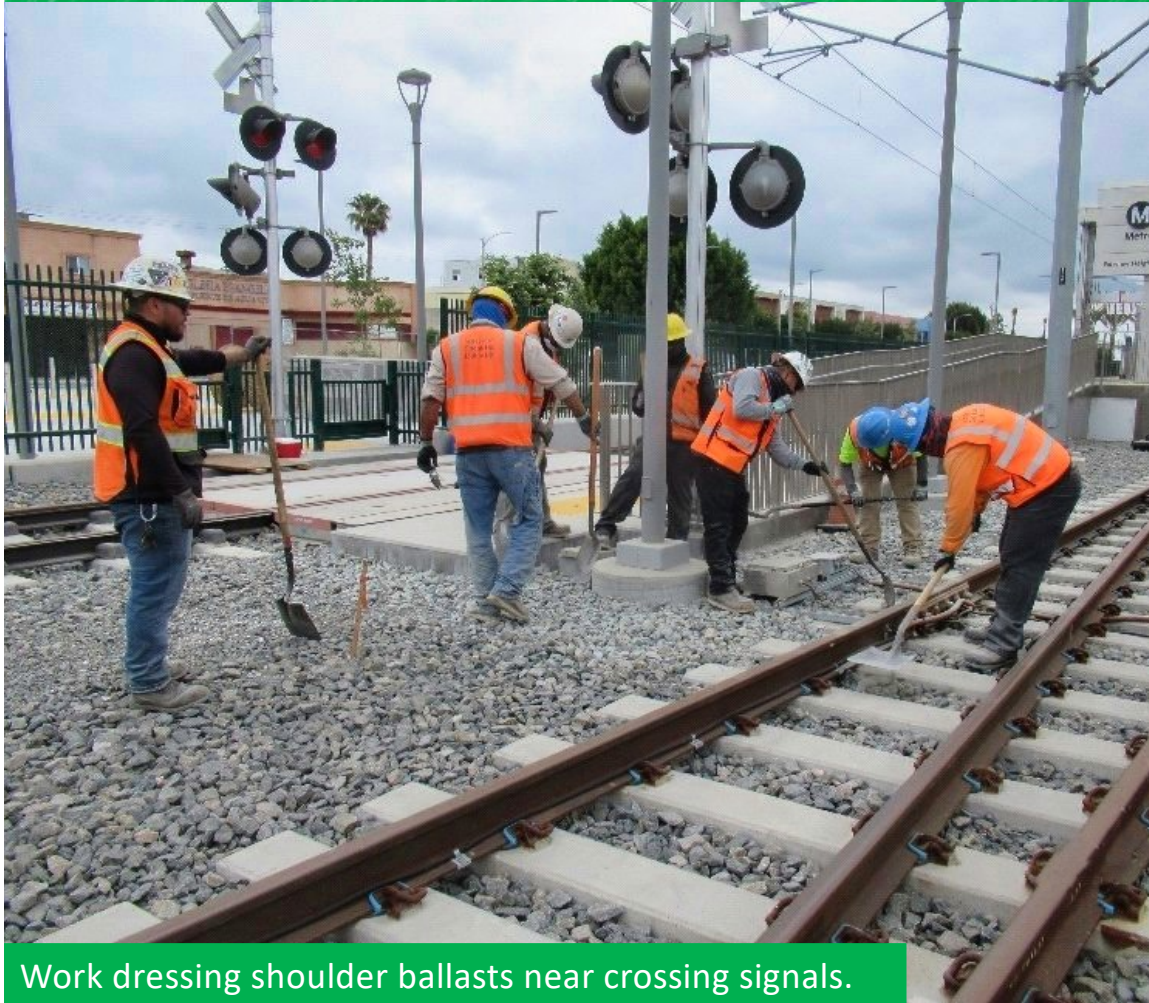
Florence Av at La Brea Av to Hillcrest Bl



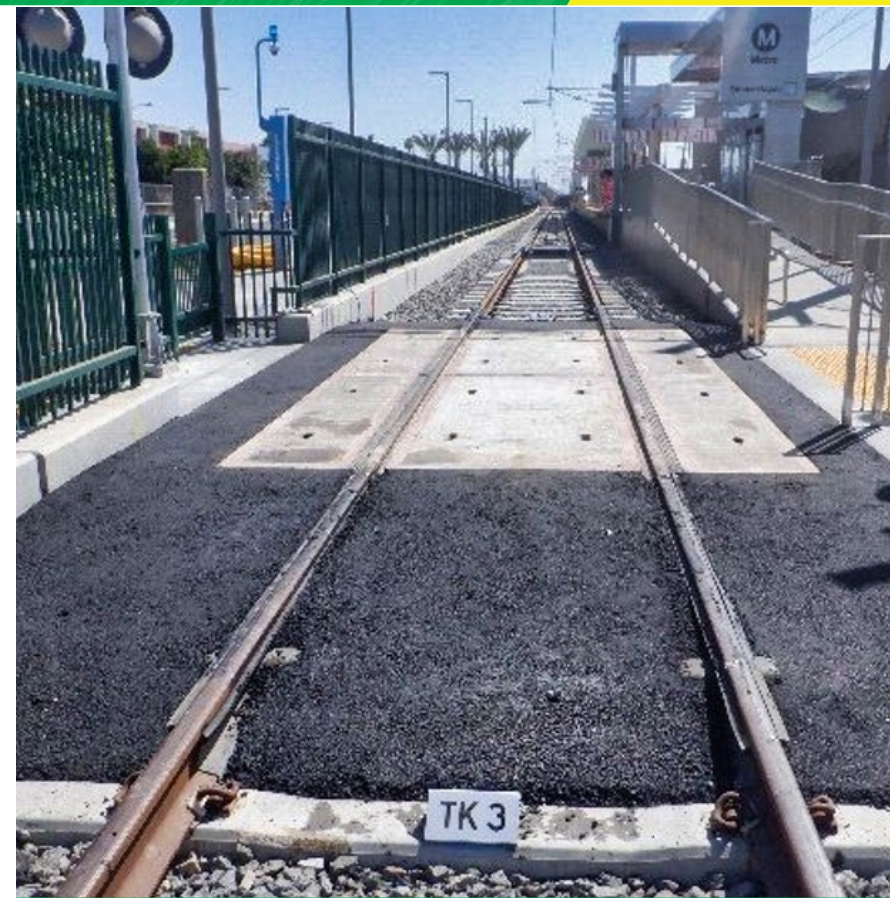
Installed art on service building and station platform

Fairview Heights Station

West BI at Redondo BI



Work dressing shoulder ballasts near crossing signals.



Train signals, blue emergency phone, pedestrian crossing, and truncated dome pads.

Southern Segment Updates

Recent Completed Work

- Streetlight foundations and stand poles installed at High St
- Ticket vending machines installed at all stations
- Graffiti coating completed at all stations
- Porcelain enamel artwork installation completed at Westchester/Veterans Station
- Benches and ADA chairs installed at Aviation/Century Station

Upcoming Construction Activities

- Ticket vending machines testing
- Ongoing touchup painting at all stations
- Ongoing installation of remaining station signage at all stations
- Ongoing train testing



Southbound tracks on C Line (Green) Junction



Northern Segment Overview

Crenshaw Bl between Metro E Line (Expo) and 67th St

Structural Elements of Stations

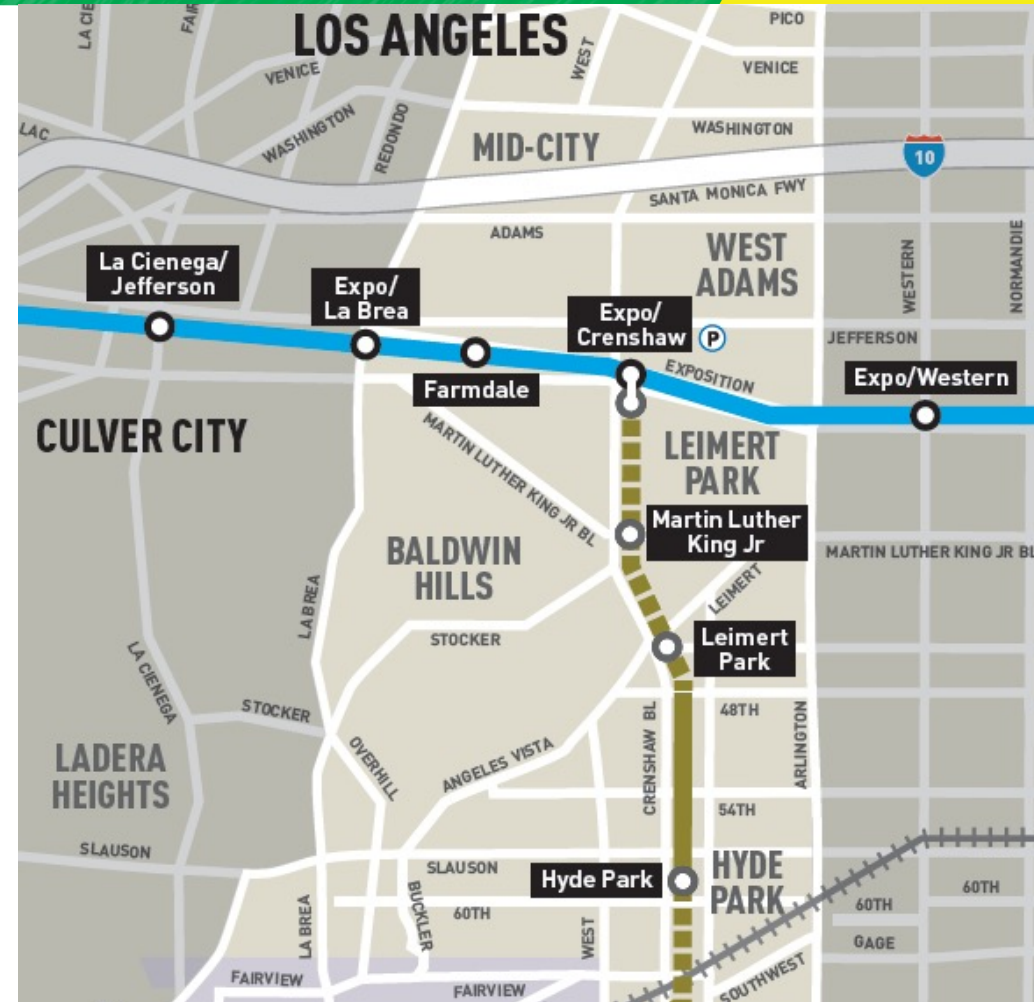
- Three underground
- One at-grade

Civil Elements of Tunnels and Trackwork

- Dual parallel bored tunnels
- Hyde Park “Cut and Cover” tunnel

Street Restoration Segments

- Underground station areas
- Hyde Park underground tunnel



Hyde Park Segment Tunnel / Cut and Cover

Crenshaw BI between 59th St to 67th St



Landscaping at train portal on northbound Crenshaw BI near 60th St



Construction Status

- Final street restoration was completed
- Outstanding ADA ramp and driveway construction
- Additional minor utility work
- Tree Planting



Park Mesa Heights At-Grade Segment

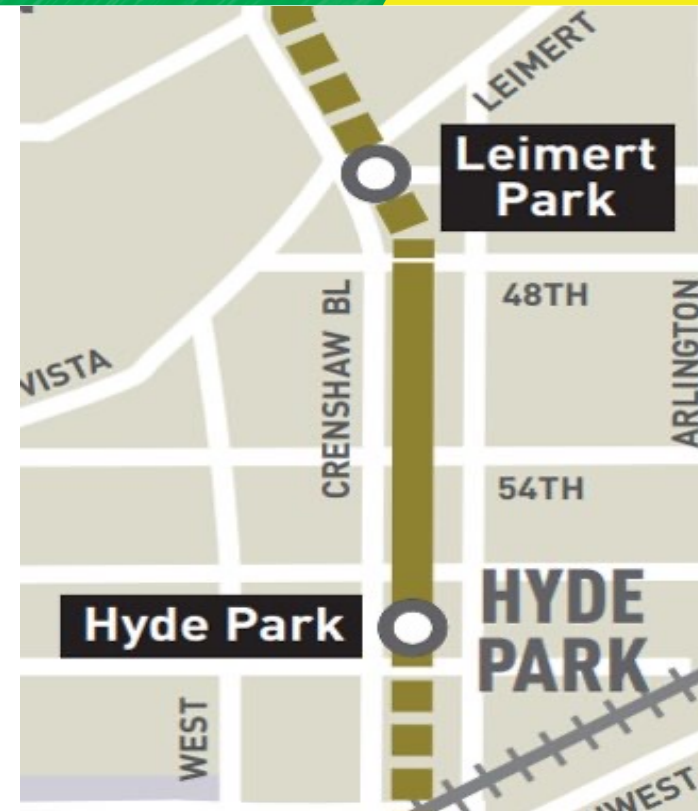
Crenshaw Bl between 48th St and 59th St

Remaining Construction Work

- Street restoration
- Outstanding sidewalk and driveway work
- Hyde Park Station construction
- Ongoing utility work
- Guideway landscaping

Upcoming Impacts

- Ongoing lane closures
- Pedestrian access occasionally restricted and rerouted
- Temporary bus stop and route relocations



Park Mesa Heights At-Grade Segment

Crenshaw Bl between 48th St and 59th St



Hyde Park Station along with recently installed artwork

Park Mesa Heights At-Grade Segment

Crenshaw Bl between 48th St and 59th St

City of Los Angeles Street Restoration Work

- Roadway resurfacing of mid-block areas
- Full depth roadway construction
- On-street public parking impacts
- Temporary bus stop and route relocations



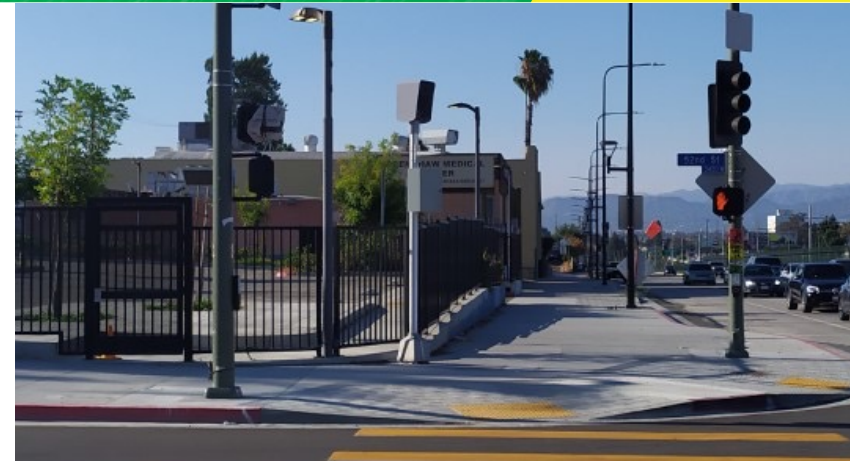
Park Mesa Heights roadway reconstruction along Crenshaw Bl

Park Mesa Heights Street Restoration

Crenshaw Bl between 48th St and 59th St

Traffic Photo Enforcement Program

- Aimed to improve vehicular and pedestrian safety and mitigate potential train and auto accidents
- Left-turn movements from Crenshaw Bl onto side streets will be enforced by cameras
- Warning period of program begins October 1, 2021, for 31 days
- Actual traffic citations issued for traffic signal violation beginning November 1, 2021



Left turn cameras on Crenshaw between 48th St and 59th St



Underground Station Construction

Underground Station Construction

- Expo/Crenshaw Station
- Martin Luther King Jr. Station
- Leimert Park Station

Ongoing Construction Activities

- On-going underground station construction
- Electrical and communications systems work
- Station plaza features installation



MLK Station plaza entrance, stairway, and landscaping

Underground Station Area Construction

Outstanding Street-level Restoration Work

- Ongoing station plaza construction
- Sidewalk construction
- Utility work
- Streetscape improvements
- Tree planting



Leimert Park Station



Artwork by Mickalene Thomas



MLK Station Mural – Only Light, Only Love



Only Light, Only Love by Shinique Smith

Expo Station Mural – Circumsolar, Migration 4 / At the Same Time



CircumSolar, Migration 4 by Rebeca Méndez

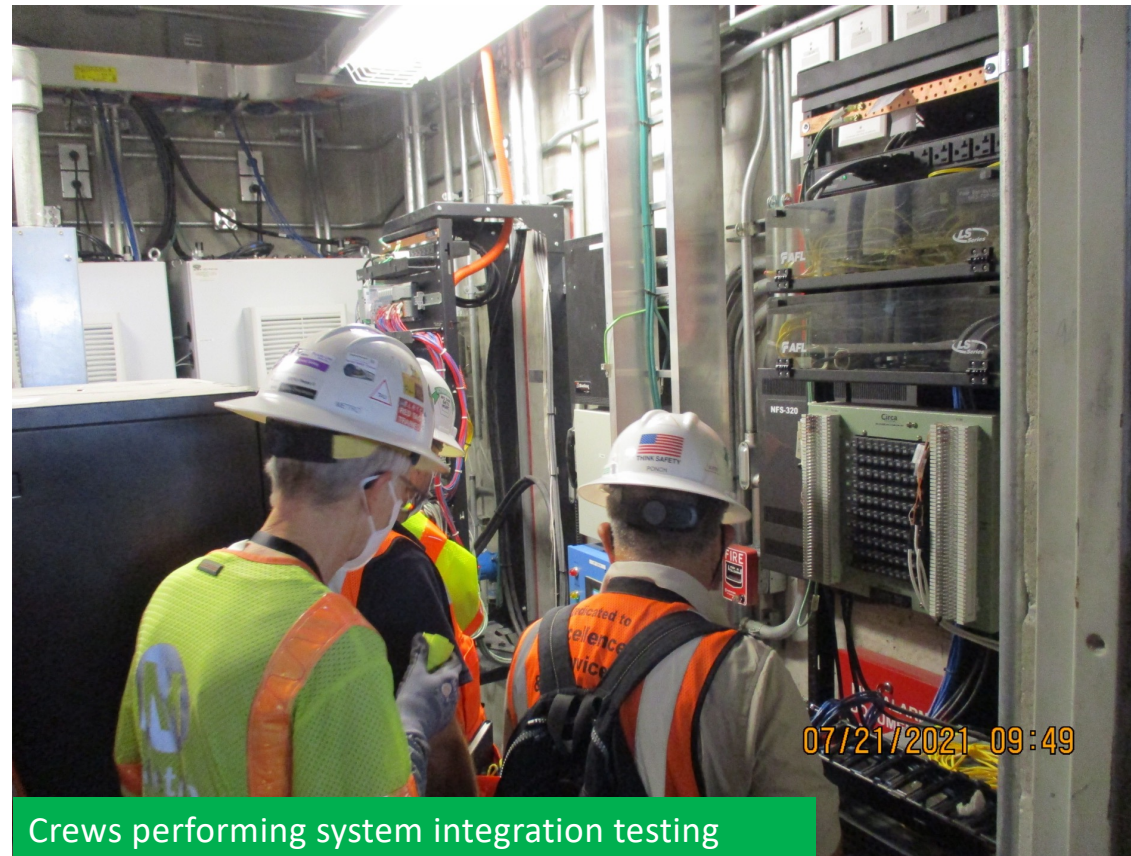


At the Same Time – Rebeca Méndez

Communications Systems

Systems Integration Testing

- Installation of equipment for fiber optic and SCADA, the Supervisory Control and Data Acquisition (SCADA) system, a key safety feature that allows Metro's Rail Operations Center (ROC) to monitor the alignment
- Testing that systems integrate during an emergency, ensuring systems function individually and together
- Radio testing of fire, police, operations, and maintenance channels
- Emergency control panel installation and testing at seven key locations



Train Testing

Train Testing

- On-going train testing
- Installation, testing, and commissioning of train systems
- Train testing through intersection signalization
- Train controls to assure safe separation of trains



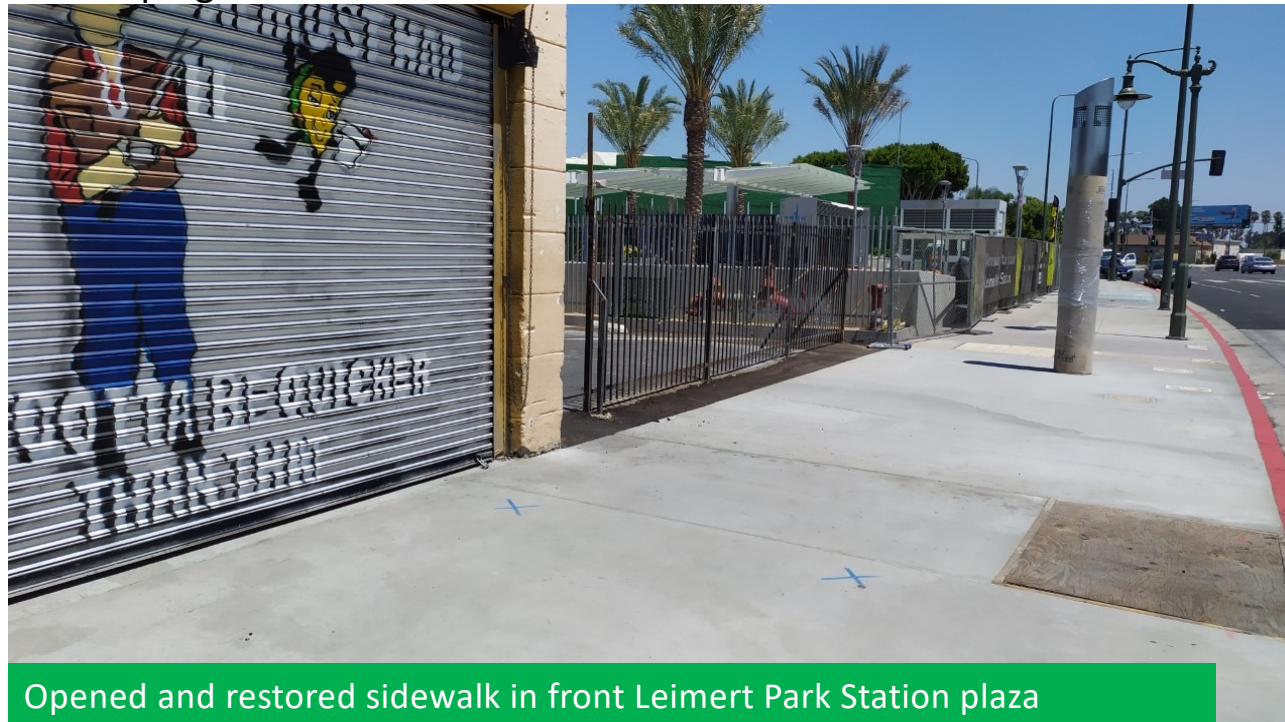
Off-Crenshaw BI Tree Planting



Northern Segment

Upcoming Construction Activities

- Ongoing City of Los Angeles final street restoration work of the Park Mesa Heights area
- Installation of station plaza features and landscaping
- Streetscape improvements
- Tree planting
- On-going train testing
- Underground ventilation systems
- Communications systems



Opened and restored sidewalk in front Leimert Park Station plaza

Metro Community Education & Mobility Programs



Metro

Who is Metro Community Education?

Metro's Community Education (MCE) Team is responsible for increasing transit safety awareness and providing education to residents of Los Angeles County who interact with Metro's public transportation system through various safety programs. This includes safety on Metro's rail lines, bus system and bicycles.



Metro Community Education is mandated by the CA Public Utility Commission to provide education to communities within in light rail lines.

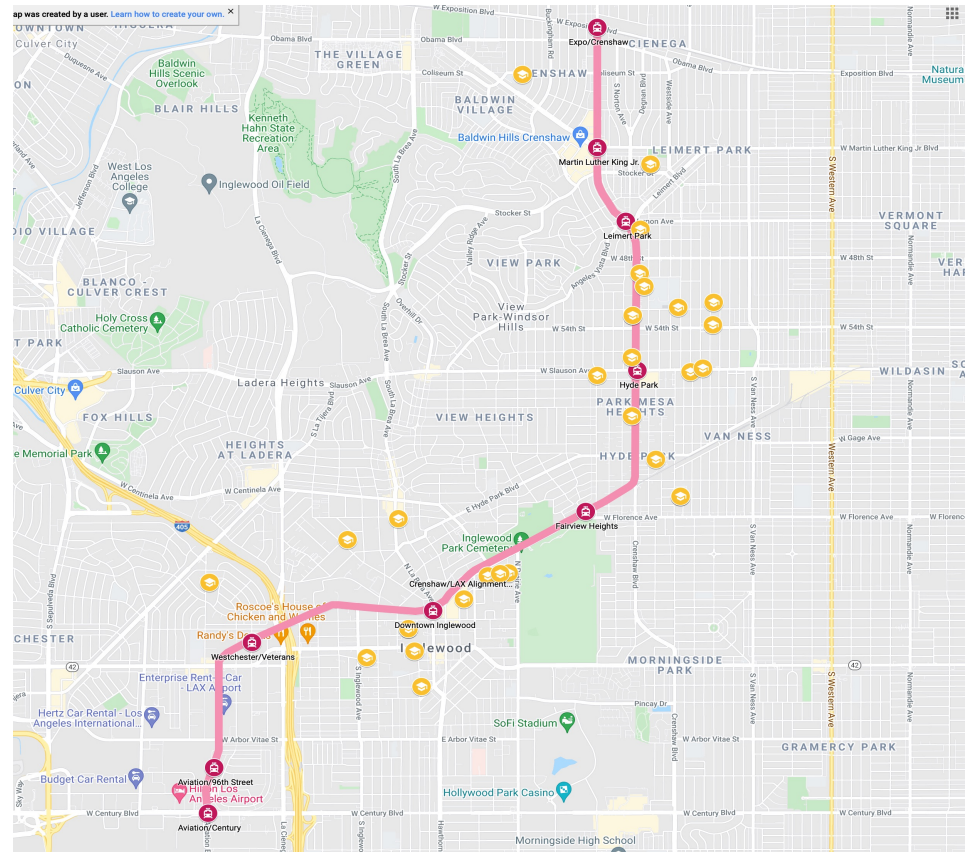


Education Outreach Service Area

MCE's **Transit Safety Program (TSP)** provides safety presentations to all schools within a 0.5 mile radius of the A, L and E Lines.

Crenshaw/LAX Line
Total Number of Schools: 31

Outreach to all community/recreation centers, libraries and senior centers within a 1.5 mile radius.



Virtual Programming



Transit Safety Workshop

- Line Specific Information (A, E, L Rail Lines)
- Train, Bus, Bike & Pedestrian Safety
- Utilizing the Metro System



Union Station Tour

- History of Union Station
- Transit Located at Union Station
- Future of Union Station



B (Red) Line Destination Tour

- Overview of Metro System
- Specific Destinations along B – Line
- How to Ride Metro

Virtual Engagement



A virtual engagement slide featuring a Metro Rail train at the top. Below the train is a cartoon character of a young man with his hands on his hips. To the right of the character is a red hand icon. Further right are three traffic signs: a black circle with a white train icon, a white 'X' sign with 'RAIL CROSSING' and 'ROAD' text, and a yellow diamond sign with a train icon and 'LOOK BOTH WAYS' text. To the right of these signs is a white rectangular sign with 'STOP HERE ON RED' and a black arrow pointing left. In the top right corner, there is a grid of 20 video thumbnails, each showing a person with an orange smiley face overlay. The name 'Mark Arroyo' is visible in one of the thumbnails. At the bottom left is the Metro logo (a black circle with a white 'M') and the word 'Metro'. At the bottom center, the text 'Obey All Traffic Signs and Signals' is displayed in white on an orange background.

Virtual Interaction Opportunities

Please consider inviting the MCE Team to participate in:

- Career Day
- Back to School Nights
- Incorporate Metro when teaching Sustainability, Engineering or Mechanics
- Parent Meetings and Workshops
- Community and School Events
- Coffee with the Principal Meetings
- Bicycle Education Safety Training
- Youth Leadership

*All activities above are currently being conducted via virtual platforms



Metro Community Education

Additional Programs:

Rail Safety Ambassadors

On the Move Riders Program

Rail Safety Ambassador Program

RSA's Responsibilities

- Observe and record behaviors of pedestrians and motorists around grade crossings
- Explain safe practices to the public
- Distribute safety materials



On the Move Riders Program



How to Ride Metro *Cómo viajar en Metro*

1 Plan Your Trip

Para saber más información sobre los servicios de Metro Rail, Metro Bus, Metro Rapid, Metro Express and Metro Light Rail, visite www.metro.net.

Para obtener más información sobre los servicios de Metro Rail, Metro Bus, Metro Rapid, Metro Express and Metro Light Rail, visite www.metro.net.

Para obtener más información sobre los servicios de Metro Rail, Metro Bus, Metro Rapid, Metro Express and Metro Light Rail, visite www.metro.net.

2 Pay Your Fare

To pay your fare in stations, select an option from the TAP card or fare device.

- **One-way** for a single boarding on a single line
- **Day Pass, 3-Day Pass, 30-Day Pass** for all-day travel on Metro Rail and Metro Bus
- **Metro-to-Metro Transfer** for transfers to other Metro services
- **Select the Senior/Disabled/Medicare** option if you have valid proof of age or disability

Fare is displayed on a readable TAP card. Tap the card on the turnstile or validator at stations on the fareless bus lines. TAP cards are also available for purchase at Metro Customer Centers, Metro paid fare vendors and online at www.metro.net.

Two children under age 5 may travel free with each fare-paying adult on Metro bus at all.

3 Hop on Board

When boarding a Metro train or bus, please hold up your TAP card or fare device for the fare collector to scan. If you are boarding a Metro train, please hold up your TAP card or fare device for the fare collector to scan. If you are boarding a Metro bus, please hold up your TAP card or fare device for the fare collector to scan.

uno Planee su viaje

Para saber más información sobre los servicios de Metro Rail, Metro Bus, Metro Rapid, Metro Express and Metro Light Rail, visite www.metro.net.

Para obtener más información sobre los servicios de Metro Rail, Metro Bus, Metro Rapid, Metro Express and Metro Light Rail, visite www.metro.net.

Para obtener más información sobre los servicios de Metro Rail, Metro Bus, Metro Rapid, Metro Express and Metro Light Rail, visite www.metro.net.

dos Pague su pasaje

Para pagar en las estaciones, seleccione una opción de la siguiente lista de opciones de TAP.

- **Boleto de ida** para un solo viaje en una sola línea
- **Day Pass, 3-Day Pass, 30-Day Pass** para viajar durante todo el día en líneas de autobús y Ferrocarril de Metro
- **Transferido de Metro a Metro** con un transferido a líneas municipales
- **Seleccione la opción de persona mayor/desapacitada/Medicare** si tiene prueba válida de su condición

Se pagará una tarjeta TAP reusable. Tague su tarjeta al lector en el torniquete o validador en las estaciones de Metro Rail y en la máquina para pagar en los autobuses de Metro. Las tarjetas TAP también son disponibles en los centros para clientes de Metro, locales de venta y por Internet en metro.net.

Das niños menores de 5 años pueden viajar gratis por cada pasaje de adulto en autobuses de Metro.

tres Venga aboard

Después de pagar el pasaje, mantenga su boleto para mostrarlo a los inspectores, quienes harán una revisión aleatoria de su boleto.

- Las bicicletas están permitidas en Metro
- Camine siempre con su bicicleta en la plaza
- Ingrese por las puertas marcadas con una bicicleta
- Siempre espere el próximo tren si está en una plataforma
- Permita que otros pasajeros salgan o ingresen antes de abordar
- Dé prioridad a los pasajeros en silla de ruedas discapacitados
- Siempre use los pasamanos y las manijas
- No bloquee las puertas o pasillos.

Normas del Estado:
Metro se compromete a asegurar que ningun participante en el programa de beneficios de este plan cubra ningún requisito, sea, edad o sexo para más información.

On the Move Riders Program

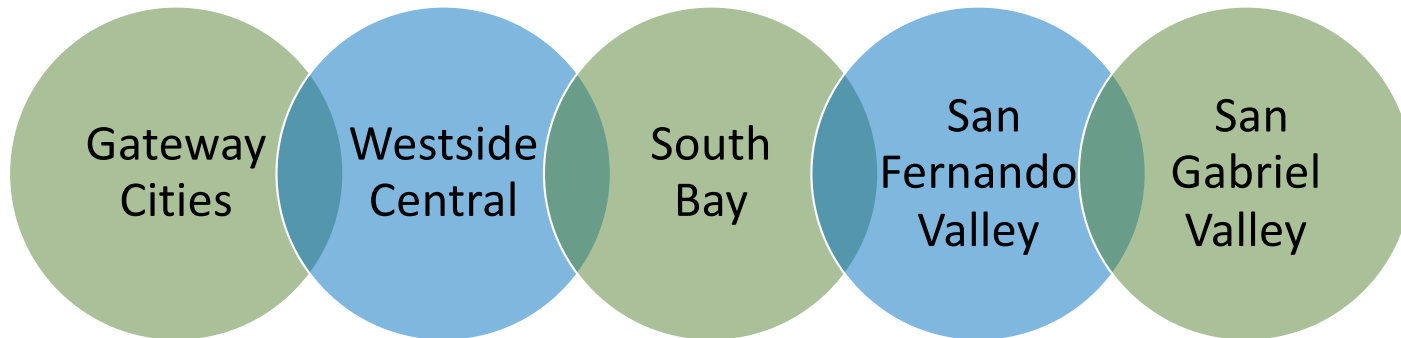
On the Move Riders Program (OTMRP) enhances and improves senior mobility throughout LA County through:

- Educational presentations
- Transit oriented events & resources
- Travel training tours
- Peer-to-peer travel training clubs

*All activities above are currently being conducted via virtual platforms



On the Move Riders Clubs



Over 30 clubs across LA County!



On the Move

RIDERS PROGRAM



213.922.2002



onthemove@metro.net



metro.net/onthemove



Metro

Q & A

Jackie Gonzalez
MCE Manager

gonzalezj10@metro.net

Brittany Mullins
MCE PCRO

MullinsB@Metro.net

Transit Safety Programs

<https://www.metro.net/about/metro-student-field-trip/>

On The Move Riders Program

<https://www.metro.net/around/senior-tips/move-riders-club/>



Metro Small Business Pilot Programs

Help small “mom and pop” businesses continue to thrive throughout construction and post construction

Metro Business Solution Center (BSC)



Metro Business Interruption Fund (BIF)



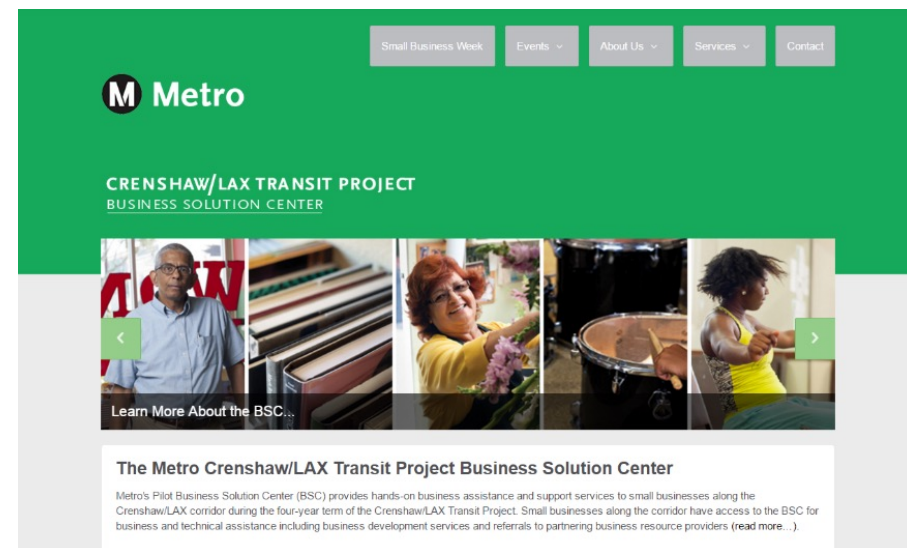
Business Solution Center Crenshaw/LAX Transit Project

BSC Business Resources:

- Hands-on business development
- Expert business advice and coaching
- Technical assistance
- Referrals to expert professionals

BSC Program Statistics – through Q2 2021:

- Number of business Contacts: 479
- Number of business Intakes/Assessments: 363
- Number of business referrals: 1145



Business Solution Center
COVID-19 Resources



Visit www.metrobsc.net for more information

Metro's Business Interruption Fund

Metro's Business Interruption Fund (BIF) **is accepting applications** for transit rail **construction impact** along the Crenshaw/LAX Transit Project, the Little Tokyo area of the Regional Connector and Sections 1, 2 and 3 of the Purple Line Extension **sustained from March 20, 2020, forward** (during the COVID-19 pandemic).

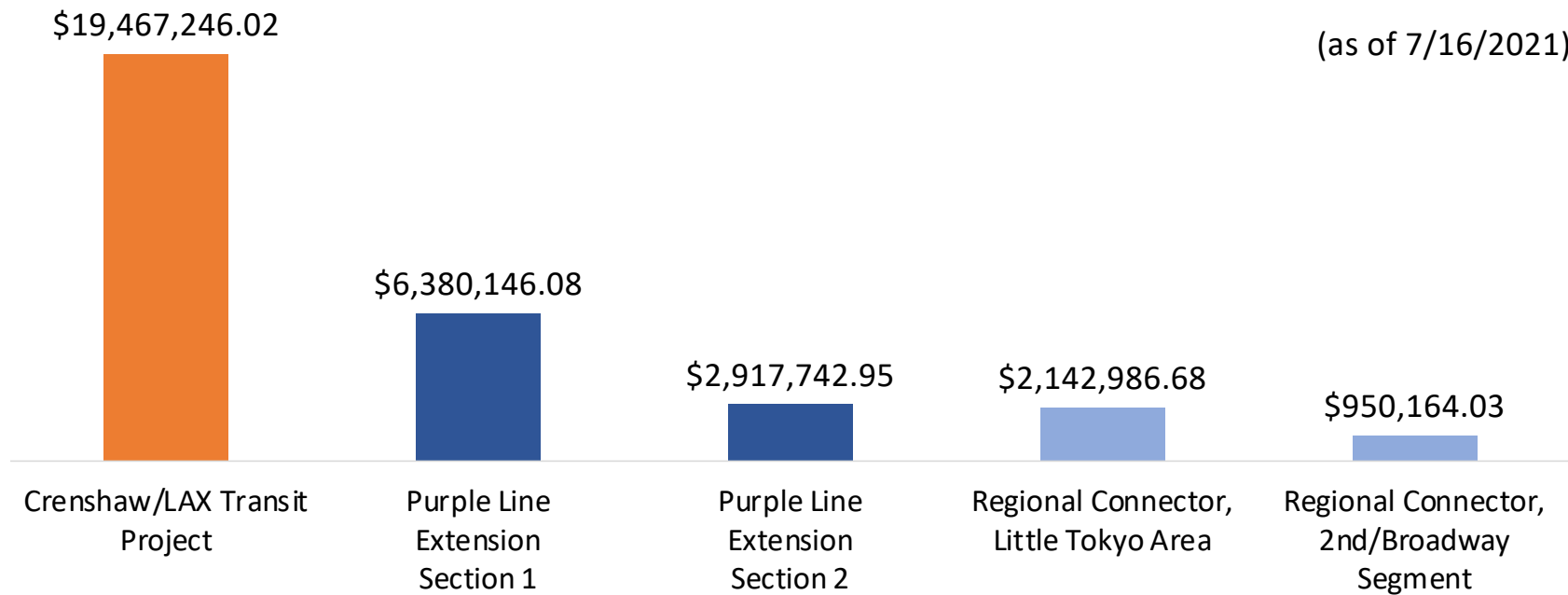
- **Small** “mom and pop” **businesses** that experienced transit rail construction impact during the COVID-19 pandemic **may be eligible**.
- Potentially eligible small business owners may *contact BIF Fund Administrator Pacific Coast Regional at 213.739.2999 x223 or Metro at bif@metro.net*.

Metro's Business Interruption Fund

Value of BIF Grants Awarded:
\$31,858,285.76*



(as of 7/16/2021)



*BIF Grants do not cover COVID-19 related impacts.

Business Interruption Fund Crenshaw/LAX Transit Project



BIF Program Statistics – July 16, 2021:

- BIF applications submitted: **1529**
- BIF applications approved: **1265**
- BIF applications pending financials: **137**
- BIF applications deemed not eligible: **125**
- BIF applications denied: **2**
- BIF Grants Awarded: **1260**
- BIF Grant Payments: **\$31,858,258.76**

Crenshaw/LAX – BIF Statistics:

- **774** grants awarded to **C/LAX**
- Total amount: **\$19,467,246.02**
- **232** small businesses received a grant



***BIF Grants do not cover COVID-19 related impacts.**

Business Interruption Fund Crenshaw/LAX Transit Project



Learn More: [Crenshaw Medical Center Spotlight](#)

Eat Shop Play Crenshaw & Inglewood

Eat Shop Play has been highlighting local mom and pop businesses in Crenshaw and Inglewood, especially eateries and specialty businesses operating pick-up and delivery during the past months.

The Eat Shop Play Crenshaw and Inglewood programs continue supporting local businesses as construction progresses by promoting them through regular social media posts and newsletters to over 14,000 community members.



Social Media Posts



Crenshaw/LAX Rail
@crenshawrail



The Sanniche Shoppe believes food should be convenient, delicious, and healthy. Their signature Lucy Mae air-fried chicken sammiche has all the flavor without the guilt. Delivery options available.

#EatShopPlay #Inglewood
Support Local Businesses
bddy.me/35s5Tyd



June 2021 Twitter Spotlight



Metro Crenshaw/LAX Transit Project

2 hrs · 🌐

Grab some fun on a bun National Chili Dog Day with Earle's on Crenshaw. Earle's prides themselves as a hot dog specialist with classic and vegan versions of their famous hot dogs and chili dogs.

#EatShopPlay #Crenshaw
Support Local Businesses
<https://bddy.me/3BLNIHW>



July 2021 Facebook Spotlight

Featured Eat Shop Play Businesses

Fernando Pullum Community Arts Center

- Provide master-level classes to local youth
- In-person and virtual classes available
- Provide unique learning and performing opportunities
- Their youth band performed at the 2020 Billboard Awards with BTS.

<https://www.pullumcenter.org/>

3351 W 43rd St, Los Angeles, CA 90008

Phone: (323) 292-2700



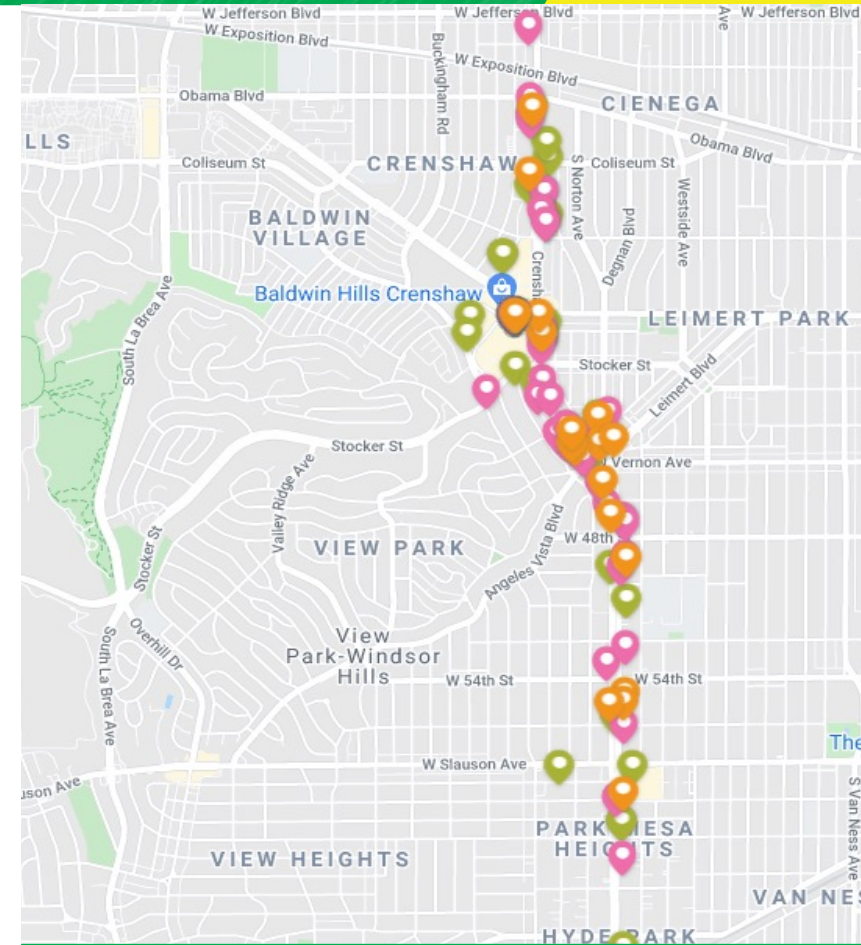
Eat Shop Play

ESP Business Spotlights:

- Metro Crenshaw/LAX Social Media Spotlights
- Regular Crenshaw/LAX Eat Shop Play email spotlights
- Referrals to Business Solution Center and Business Interruption Fund

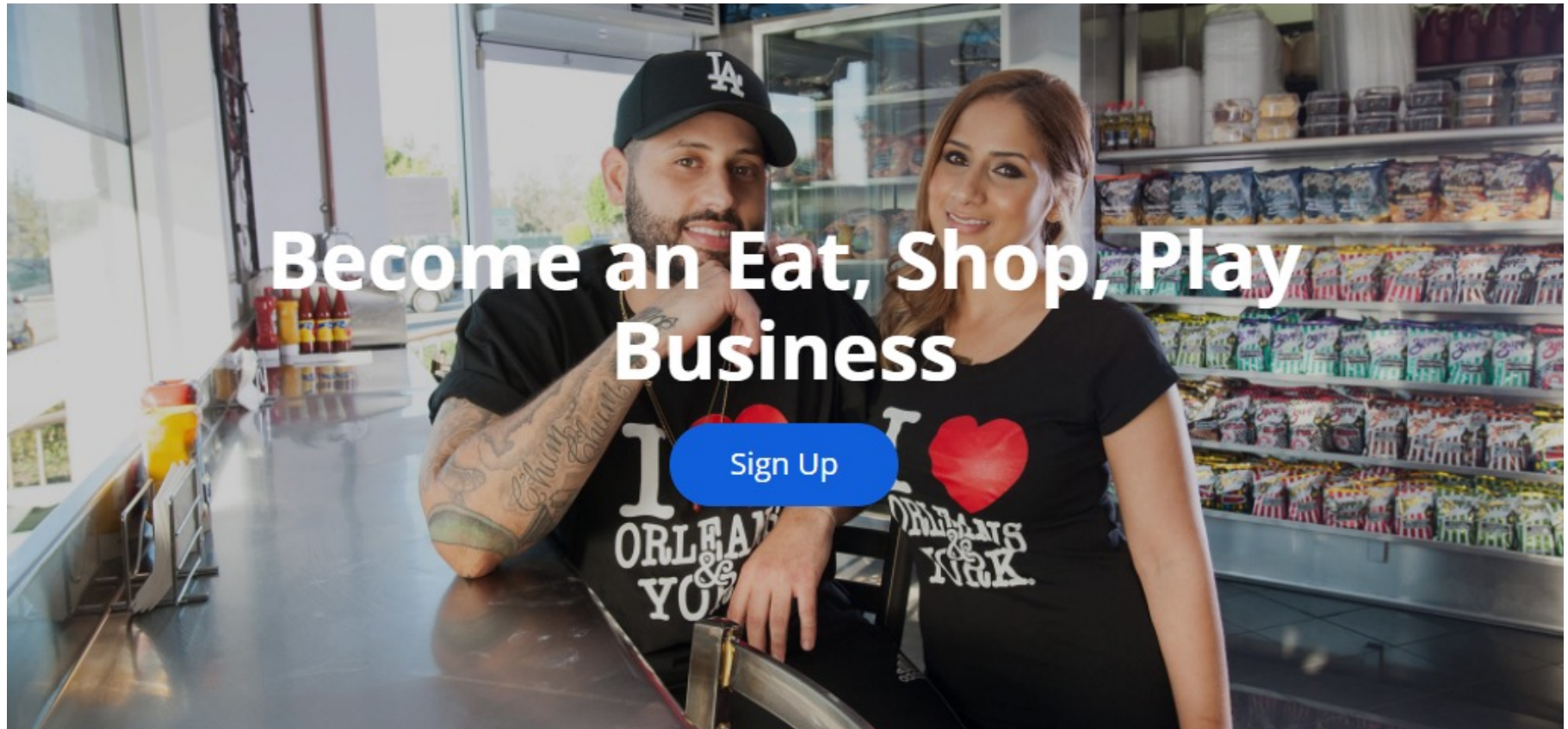
ESP Program Statistics: July 2020 - June 31, 2021:

- Number of Crenshaw/LAX Eat Shop Play businesses: 82
- Eat Shop Play Social Posts: 69
- Eblasts & Newsletters 30
- Total Individual Business features: 146



Map of Crenshaw Eat Shop Play Businesses

Enroll Your Business

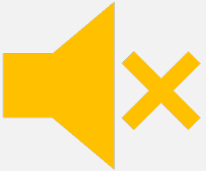


metro.net/eatshopplay | eatshopplay@metro.net

Using Zoom & Submitting Questions



This meeting is being recorded. Video file will be posted on our web site at metro.net/crenshaw



Public video and mics are disabled. We cannot hear you or see you.



Please ask questions and submit comments via the Q&A feature or text us.



Q&A



Raise Hand



Chat

Thank You, Please Connect With Us



213.922.2736



crenshawcorridor@metro.net



beta.metro.net



@crenshawrail



crenshawrail