

Next stop: more rail.

CRENSHAW/LAX TRANSIT PROJECT



Virtual Construction Update Meeting

May 27, 2021 | 6 PM



Using Zoom & Submitting Questions



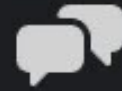
This meeting is being recorded. Video file will be posted on our web site at metro.net/crenshaw



Public video and mics are disabled. We cannot hear you or see you.



Please ask questions and submit comments via the Q&A feature or text us.



Q&A



Raise Hand



Chat

Submit a question/comment via text:

213.276.6008

Welcome, thank you for joining us!

10 min	Project Overview	Annette Cortez , Community Relations Manager
10 min	North Segment	Ron Macias , Principal Community Relations Officer
10 min	South Segment	Saroya Sandiford , Principal Community Relations Officer
15 min	First/Last Mile	Jacob Lieb , Senior Director Countywide Planning & Development
10 min	Business Support Programs	Sidney Urmancheev , Transportation Associate Jessica Spearman , Business Interruption Fund Manager
5 min	Eat Shop Play Program	Jesus Galeno , Transportation Associate
30 min	Moderation / Q&A	Ginny Brideau , Community Relations Manager Robyn Lopez , Community Relations Officer

Project Overview

Walsh Shea Corridor Constructors (WSCC)

Main Line & Stations Contractor

Hensel Phelps Herzog (HPH)

Southwestern Maintenance Yard Contractor,
Completed March 2019

- 8.5-mile light-rail servicing the Cities of Los Angeles, Inglewood and El Segundo
- 8 new stations:
 - 3 underground
 - 4 at-grade
 - 1 aerial
- Life of Project Budget: \$2.148 Billion
- Project has reached 98% completion



Northern Segment Overview

Crenshaw Bl between Metro E Line (Expo) and 67th St

Structural Elements of Stations

- Three underground
- One at-grade

Civil Elements of Tunnels and Trackwork

- Dual parallel bored tunnels
- Hyde Park “Cut and Cover” tunnel

Street Restoration Segments

- Underground station areas
- Hyde Park underground tunnel



Underground Station Construction

Underground Station Construction

- Expo/Crenshaw Station
- Martin Luther King Jr. Station
- Leimert Park Station

Ongoing Construction Activities

- On-going underground station box construction
- Electrical and communications systems work
- Station plaza features installation



Leimert Park Station underground platform level with escalators, stairs, and artwork

Underground Station Area Construction

Outstanding Street-level Restoration Work

- Ongoing station plaza construction
- Sidewalk construction
- Utility work
- Streetscape improvements
- Tree planting



Leimert Park Station plaza main entrance with station artwork glass

Martin Luther King Jr Station Area Street Restoration

Crenshaw Bl between Stocker Av – King Bl

Recent Street Restoration Work

- Final roadway paving and resurfacing
- Final configuration of traffic lanes, crosswalks and roadway conditions
- Traffic signal improvements
- On-street public parking restored



Crosswalk striping at Crenshaw Bl/King Bl

Martin Luther King Jr Station Area Street Restoration

Crenshaw Bl between Stocker Av – King Bl



Crenshaw Bl street paving and restriping

Martin Luther King Jr Station Area Street Restoration Crenshaw Bl between Stocker Av – King Bl



Newly paved street of Crenshaw Bl at King Bl

Martin Luther King Jr Station Plaza Construction



Brick paver installation at MLK Jr Station plaza



Station plaza area with pylon, benches, and landscaping

Park Mesa Heights At-Grade Segment

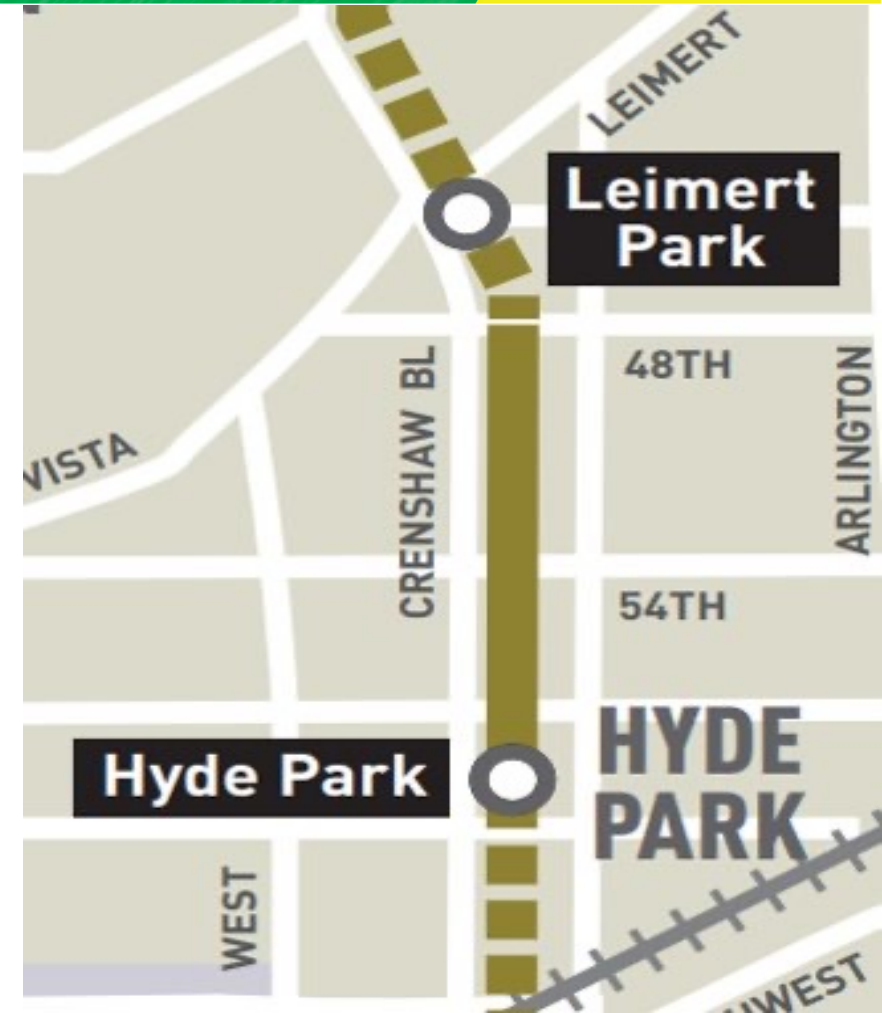
Crenshaw Bl between 48th St and 59th St

Remaining Construction Work

- Street restoration
- Outstanding sidewalk and driveway work
- Hyde Park Station construction
- Ongoing utility work
- Guideway landscaping

Upcoming Impacts

- Ongoing lane closures
- Pedestrian access occasionally restricted and rerouted
- Temporary bus stop and route relocations



Park Mesa Heights Street Restoration

Crenshaw Bl between 48th St and 59th St

Upcoming Street Restoration Work

- Roadway resurfacing of mid-block areas
- Full depth roadway construction
- Utility work
- On-street public parking impacts
- Temporary bus stop and route relocations



Artwork panel installation at Hyde Park Station

Hyde Park Segment Tunnel / Cut and Cover

Crenshaw Bl between 59th St to 67th St



Tree planting along New Road (South of 67th St)

Construction Status

- Final street restoration was completed
- Outstanding ADA ramp construction at some intersections
- Additional minor utility work
- Tree Planting



Train Testing

Train Testing

- At-grade testing between 48th St – 59 St during the week of May 31, 2021
- Installation, testing, and commissioning of train systems
- Train testing through intersection signalization
- Train controls to assure safe separation of trains



Northern Segment

Upcoming Construction Activities

- Final street restoration of Park Mesa Heights
- Paving and installation of features and landscaping at station plazas
- Streetscape improvements
- Tree planting
- On-going train testing
- Underground ventilation systems
- Communications systems



Expo/Crenshaw Station artwork installation

Southern Segment Update

Crenshaw Bl at 67th St through C Line (Green)

Four New Stations

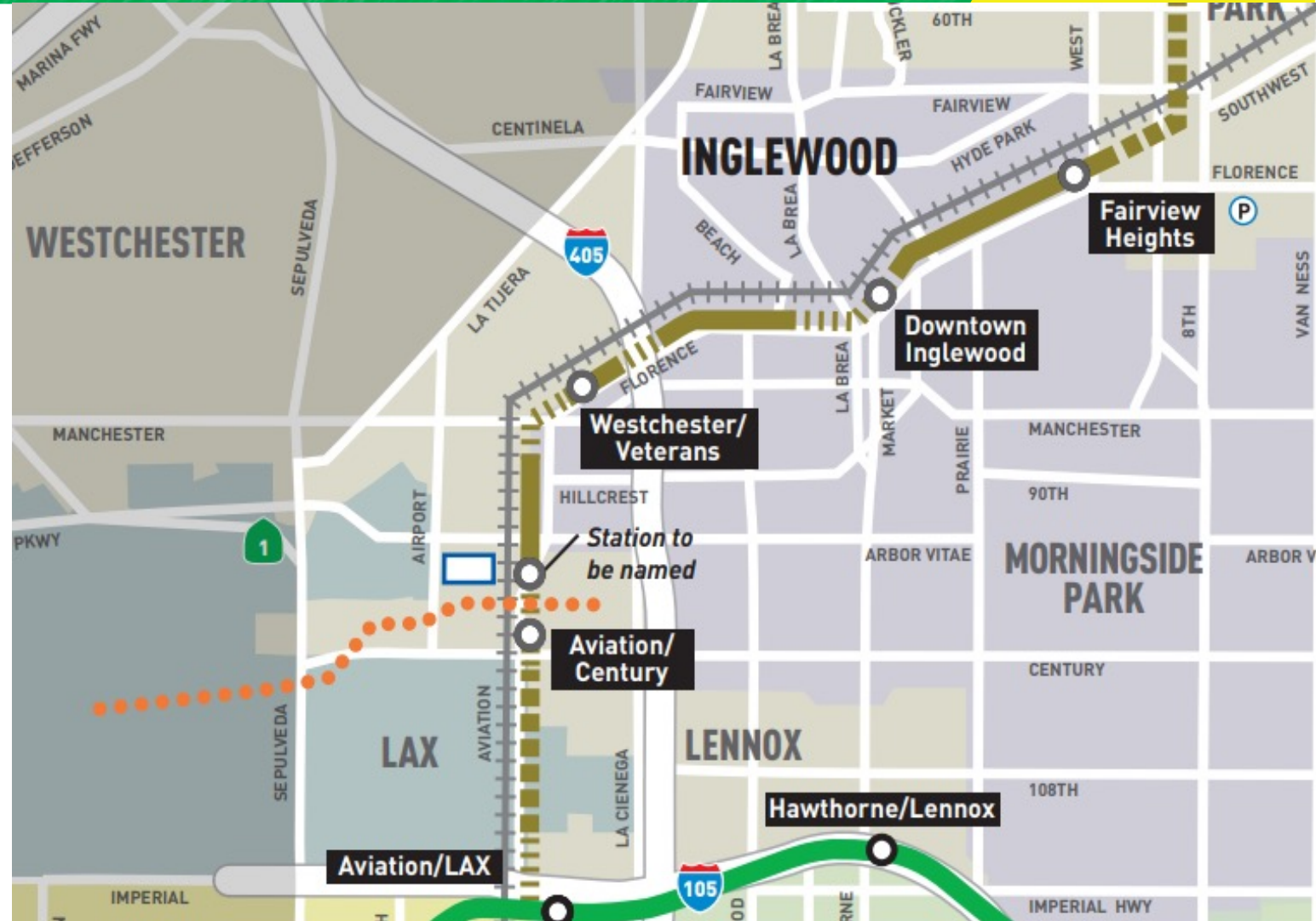
- Three At-Grade
- One Aerial

Five Aerial Structures

- 111th St
- Century Bl
- Manchester Av
- I-405 FWY
- La Brea Av

One Underground Structure

- Adjacent to LAX tarmacs at Aviation Bl and 111th St



Fairview Heights Station

West Bl at Redondo Bl



Emergency telephone (ETEL) with blue light station



Pedestrian crosswalk, steel bollards, TVM canopy structure



Fairview Heights Station

West BI at Redondo BI



Installed art on station platform & fare gate equipment

Fairview Heights Station

West Bl at Redondo Bl



Contractor performing stainless steel cladding



Installing ticket vending machines

Downtown Inglewood Station

Florence Av at La Brea Av to Hillcrest Bl



Ticket Vending Machine



Fare gate equipment

Downtown Inglewood Station

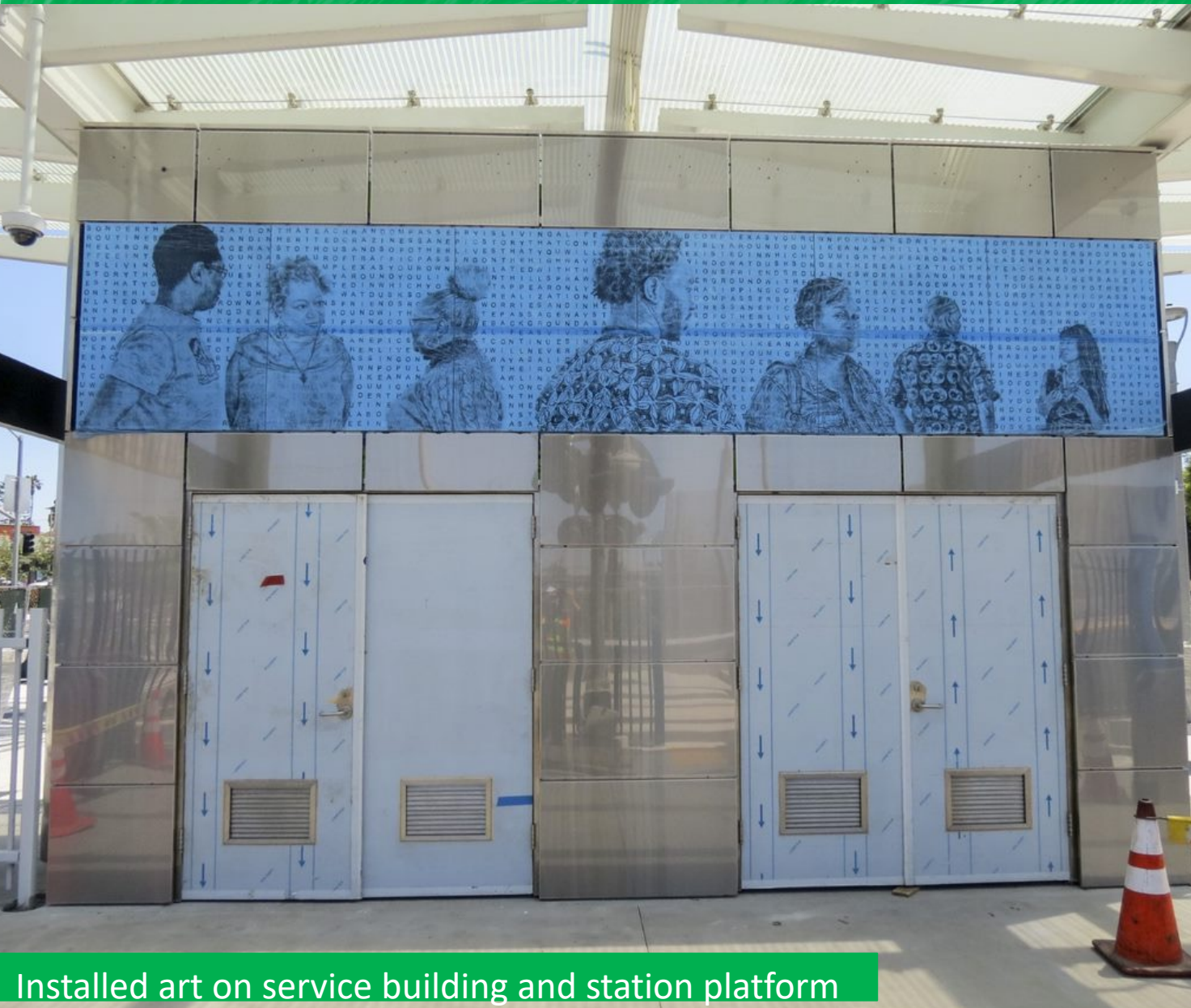
Florence Av at La Brea Av to Hillcrest Bl



Newly installed CCTV and ETEL with blue light station

Downtown Inglewood Station

Florence Av at La Brea Av to Hillcrest Bl



Installed art on service building and station platform



Downtown Inglewood Station

Florence Av at La Brea Av to Hillcrest Bl



Westchester/Veterans Station

Florence Av at Hindry Av



Installed art and "between car barriers" on station platform



Aviation/Century Station

Aviation Bl at Century Bl



Northbound view of station entrance at Aviation Bl/Century Bl

Aviation/Century Station

Aviation BI at Century BI



Porcelain enamel artwork on service building & fare gate equipment

Aviation/Century Station

Aviation Bl at Century Bl



Aviation/Century Station

Aviation Bl at Century Bl



Slot Paving at Century Bl/Aviation Bl



Excavating for traffic signal installation

Southern Segment Updates

Upcoming Construction Activities

- Install streetlight foundations and stand poles at High St
- Complete installation of ticket vending machines at Fairview Heights Station
- Complete touchup painting and graffiti coating at all stations
- Install remaining station signage at all stations
- Finish porcelain enamel artwork installation at Westchester/Veterans Station
- Install benches and ADA chairs at Aviation/Century Station
- Upcoming train testing



Southbound tracks on C Line (Green) Junction



Crenshaw/LAX Neighborhood Student Art Contest

- Celebrate the communities along the Crenshaw/LAX Transit Project.
- Metro is producing commemorative pins inspired by the artworks of high school student artists.
- Each pin will represent one of eight new Crenshaw/LAX Transit Project stations.
- For more info and full contest rules, visit metro.net/claxartcontest

March 22, 2021 to June 11, 2021.

In-person entries must be received by 3pm Monday through Friday. Online entries can be submitted 24/7.



Next stop: more rail.

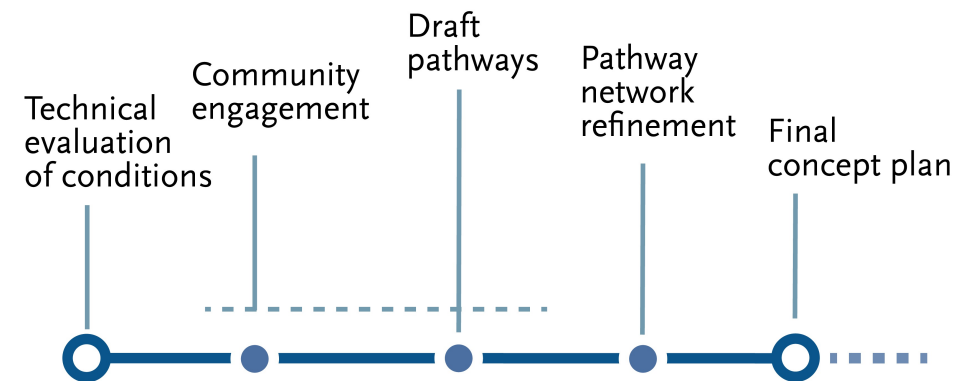
CRENSHAW/LAX TRANSIT PROJECT



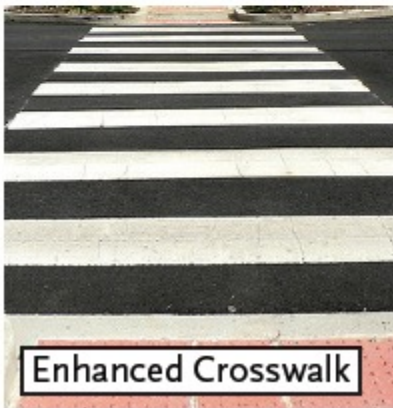
Expo/Crenshaw First/Last Mile Plan

First/Last Mile Planning overview

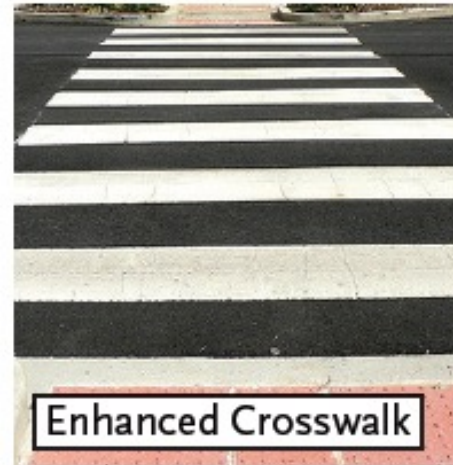
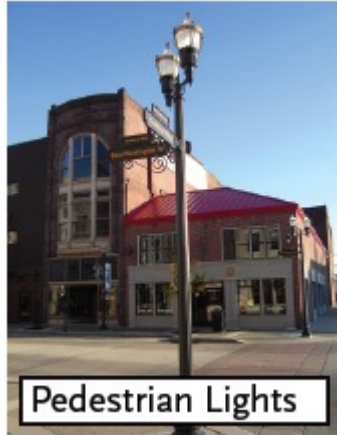
- Metro's role
 - Build and operate transit
 - First/last mile plans identify safe, convenient connections
 - FLM plan is concept for later design and implementation
- City of Los Angeles role
 - Balance needs of street users through own plan
 - Design, construct project improvements
 - Receive s advisory



First/Last Mile Planning



First/Last Mile Planning



Expo/Crenshaw First/Last Mile Plan



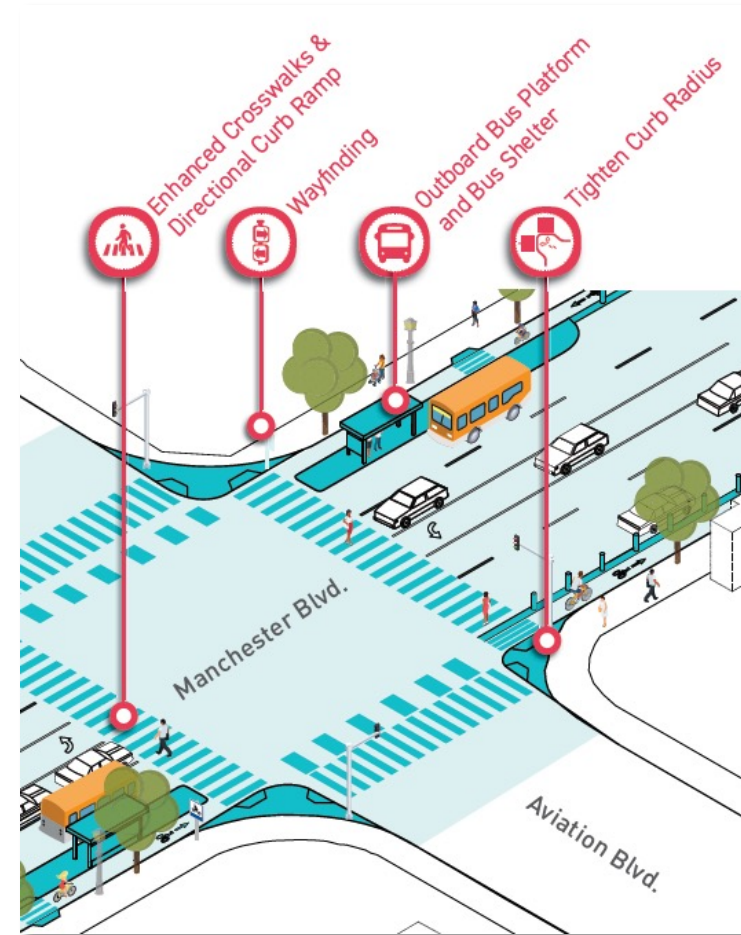
Expo/Crenshaw First/Last Mile Plan

- Smaller-scale plan
- Key transfer station
- Three types of outreach activities
 - Community roundtables, December 2019
 - Pop-up event, February 2020 (right)
 - Online survey in February 2020



Inglewood First/Last Mile Plan

- Four C/LAX stations
- Completed in 2018
- Typical improvements include enhanced bus stops, crosswalks, protected bike lanes
- City received \$6.5M in Measure M funding in 2019



Selection of Manchester Blvd recommendations near Westchester/Veterans Station

Recommendations

Key recommended improvement types

- Enhanced crosswalks
- Bike facilities
- Pedestrian lighting
- Street trees and landscaping
- Corner extensions/bulb-outs

Priority access pathways to station

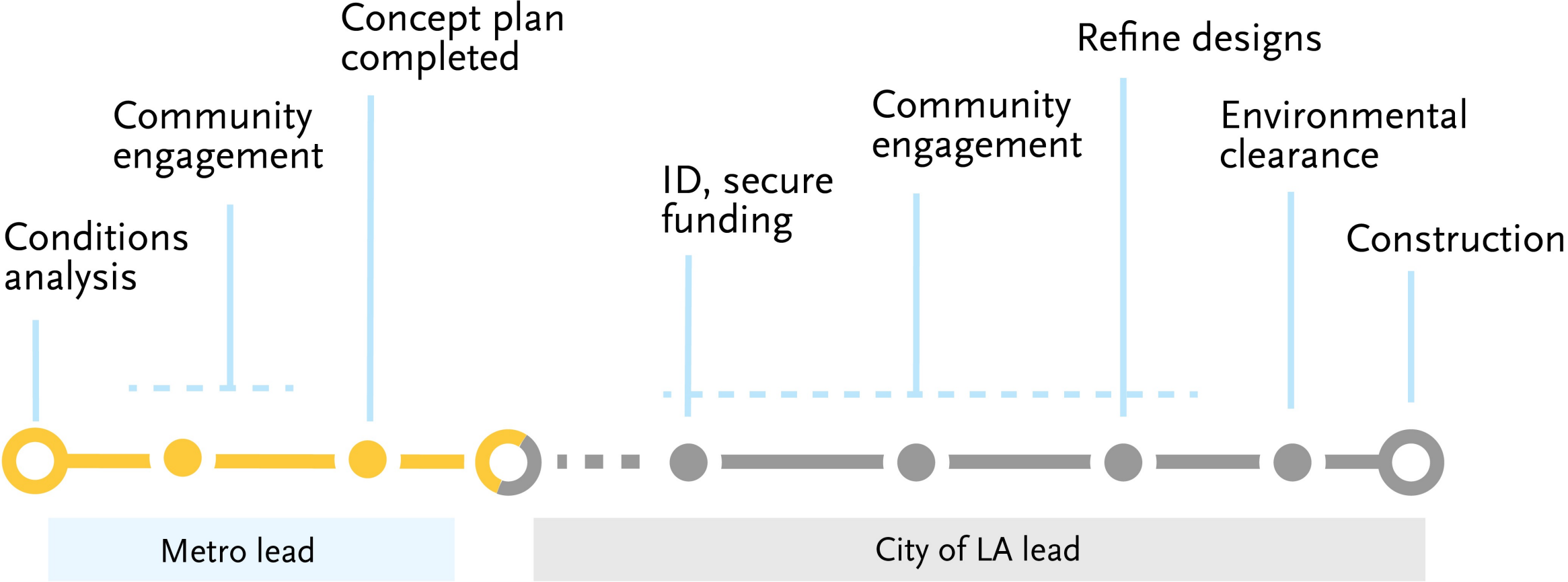
- Crenshaw Blvd
- Exposition Blvd
- Obama Blvd
- Jefferson Blvd



Plan Current Status

- Draft prepared
- Additional outreach to hear feedback, inform new priorities
- Identify projects with broad support
- On-going collaboration with City of Los Angeles

Next Steps



Thank you!

See the proposed plan: *bit.ly/ec-flm-plan*

firstlastmile@metro.net

metro.net/projects/first-last/

Metro Small Business Pilot Programs

Help small “mom and pop” businesses continue to thrive throughout construction and post construction

Metro Business Solution Center (BSC)



Metro Business Interruption Fund (BIF)



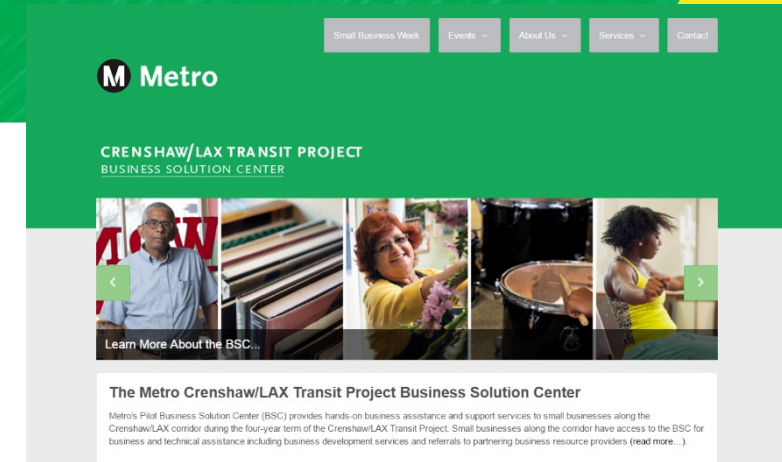
Business Solution Center Crenshaw/LAX Transit Project

BSC Business Resources:

- Hands-on business development
- Expert business advice and coaching
- Technical assistance
- Referrals to expert professionals

BSC Program Statistics – April 30, 2021:

- Number of business Contacts: **479**
- Number of business Intakes/Assessments: **363**
- Number of business referrals: **1145**





Metro's BIF during COVID-19 Pandemic

- > **Metro's Pilot Business Interruption Fund does not cover revenue loss nor fixed operating expenses related to COVID-19 impacts.**
 - > Is Metro's BIF still active? *Yes.*
 - > Have the eligibility requirements changed? *No.*
 - > Who can small business owners contact for questions? *Please contact BIF Fund Administrator Pacific Coast Regional at 213.739.2999 or Metro at bif@metro.net.*

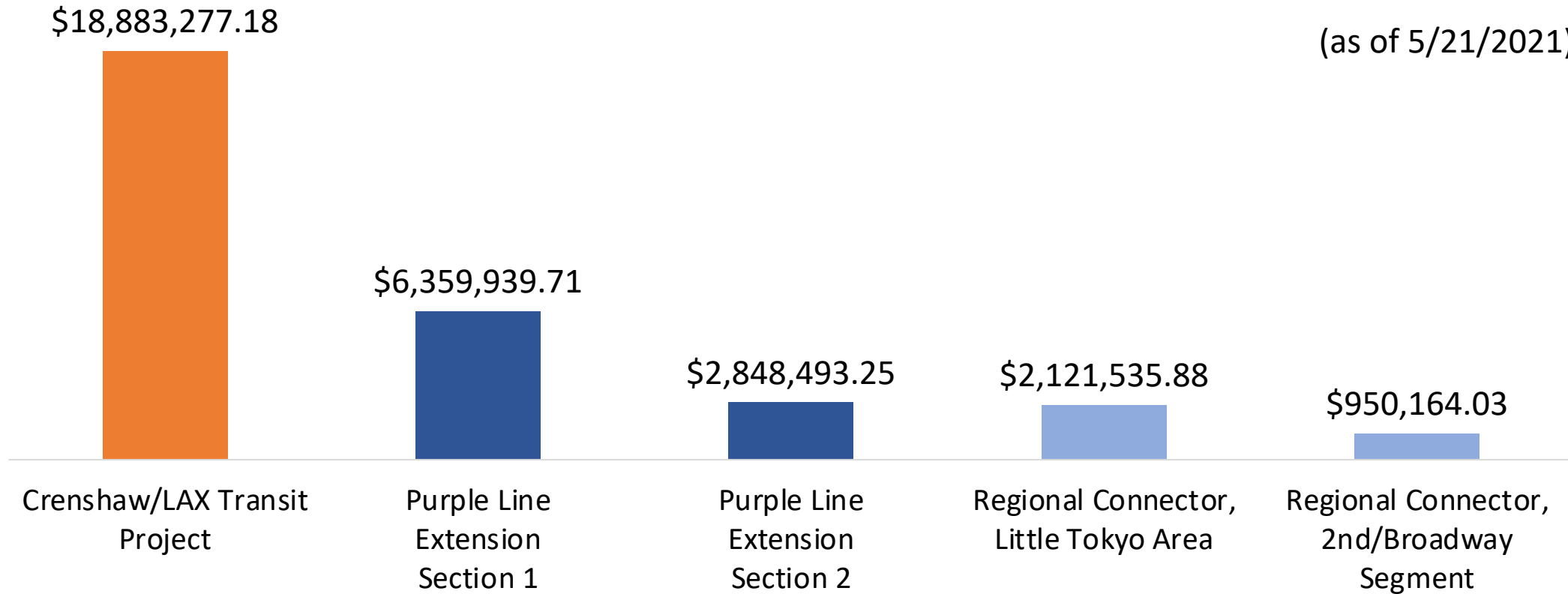


Metro's BIF during COVID-19 Pandemic

Value of BIF Grants Awarded:
\$31,163,410.05*



(as of 5/21/2021)



*BIF Grants do not cover COVID-19 related impacts.

Business Interruption Fund

Crenshaw/LAX Transit Project



BIF Program Statistics – May 21, 2021:

- BIF applications submitted: **1513**
- BIF applications approved: **1252**
- BIF applications pending financials: **134**
- BIF applications deemed not eligible: **125**
- BIF applications denied: **2**
- BIF Grants Awarded: **1237**
- BIF Grant Payments: **\$31,163,410.05**

Crenshaw/LAX – BIF Statistics:

- **758** grants awarded to **C/LAX**
- Total amount: **\$18,883,277.18**
- **232** small businesses received a grant

Eat Shop Play Crenshaw & Inglewood

Eat Shop Play has been highlighting local mom and pop businesses in Crenshaw and Inglewood, especially eateries and specialty businesses operating pick-up and delivery during the past months.

The Eat Shop Play Crenshaw and Inglewood programs continue supporting local businesses as construction progresses by promoting them through regular social media posts and newsletters to over 14,000 community members.



Social Media Posts



Metro Crenshaw/LAX Transit Project

May 7 at 2:00 PM · 🌐

Give mom the gift of fashion this Mother's day. Top Diversified Fashions creates original and unique outfits for the entire family. Receive 60% off online and in-store with promo code MOTHERSDAY60 now until May 9th.
#EatShopPlay #Inglewood
Support Local Businesses
<https://bddy.me/2R5q9IF>



**TO ALL THE MOTHERS
WE SEE AND
APPRECIATE YOU!**



**HAPPY
MOTHER'S DAY
60% OFF SALE**

May 2021 Facebook Spotlight



Crenshaw/LAX Rail @crenshawrail · May 19

Inglewood's premier ice cream spot has re-opened with a brand new indoor seating area so you can enjoy your frozen treat as soon as possible. Their signature Jazz ice cream sandwich and new vegan options are music to your mouth!

#EatShopPlay #Inglewood
bddy.me/2RnXF6Z



May 2021 Twitter Spotlight

Crenshaw



Yoga
Dance
Meditation =
PEACE

Crenshaw Yoga & Dance

Crenshaw Yoga and Dance offers free and paid virtual yoga and dance classes for all groups. Learn how to practice mindfulness and meditation or yoga for beginners.

5426 Crenshaw Bl
323.294.7148



Delicious Southern Cuisine

Delicious is more than just their name. Treat yourself to a warm homestyle soul food meal with favorites like chicken, fish, and oxtail, paired up with warm fresh-baked cornbread muffins. Pick-up and delivery options are available.

4371 Crenshaw Bl
323.298.0445

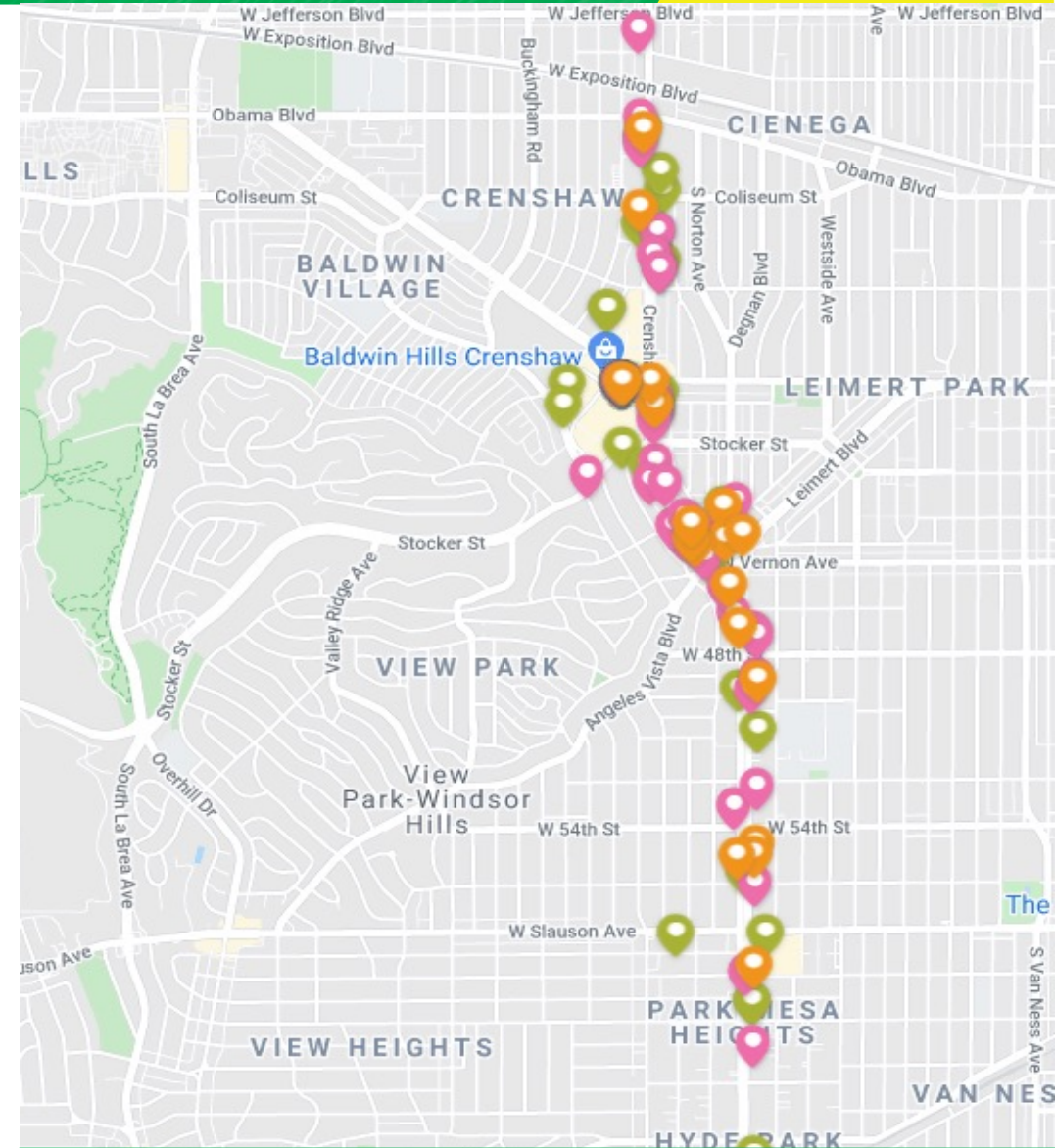
Eat Shop Play

ESP Business Spotlights:

- Metro Crenshaw/LAX Social Media Spotlights
- Regular Crenshaw/LAX Eat Shop Play email spotlights
- Referrals to Business Solution Center and Business Interruption Fund

ESP Program Statistics: July 2020 - April 31, 2021:

- Number of Crenshaw/LAX Eat Shop Play businesses: 80
- Eat Shop Play Social Posts: 63
- Eblasts & Newsletters 30
- Total Individual Business features: 140



Map of Crenshaw Eat Shop Play Businesses

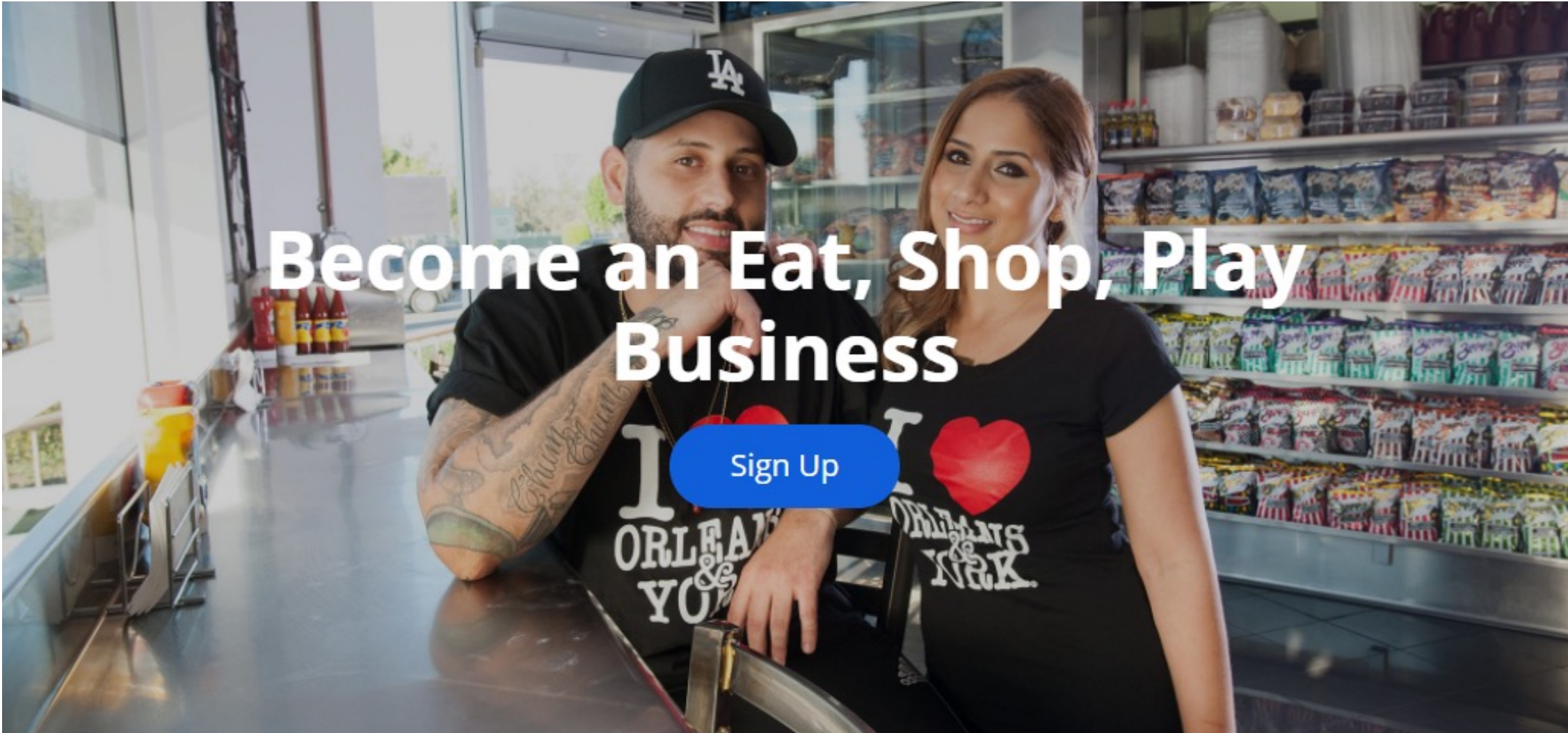
Featured Eat Shop Play Businesses

Ride On! Bike Co-op

- E-Bikes
- Bike Safety Classes
- Bike Infrastructure Support
- <https://www.rideonbikecoop.org/>
- (323) 903-5043
- 4319 Degnan Blvd
Los Angeles, CA 90008



Enroll Your Business



metro.net/eatshopplay | eatshopplay@metro.net

Using Zoom & Submitting Questions



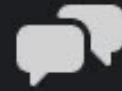
This meeting is being recorded. Video file will be posted on our web site at metro.net/crenshaw



Public video and mics are disabled. We cannot hear you or see you.



Please ask questions and submit comments via the Q&A feature or text us.



Q&A



Raise Hand



Chat

Submit a question/comment via text:

213.276.6008

Thank You, Please Connect With Us



213.922.2736



crenshawcorridor@metro.net



metro.net/crenshaw



@crenshawrail



crenshawrail