



Next stop: Westwood.

PURPLE (D LINE) EXTENSION TRANSIT PROJECT
Section 3



We will begin soon



This conversation will be recorded and shared afterwards online and via email



You can submit your questions using the Q&A feature.



The chat feature is to communicate only with the panel.

Panelist

Metro Purple Line Extension Team

- Kasey Shuda, Senior Manager, Community Relations
- Marlon Walker, Community Relations Manager
- Glyssa Robles, Principal Community Relations Officer

Metro New Media Team

- Stephanie Molen, Principal Community Relations Officer

Contractor Team

- Yoana Moreno, TPOG Stations Manager
- Josh Escobar, TPOG Project Engineer, UCLA Station
- Joanna Amador-Dempsey, Modern Times, Community Relations Director

Metro Eat Shop Play

- Robyn Lopez, Community Relations Officer

Metro Business Interruption Fund

- Jessica Spearman, Principal Transportation Planner

Purple Line Extension Alignment



Sections 1, 2, & 3 Status

	Forecasted Schedule		
Section	Section 1	Section 2	Section 3
Length	3.92 Miles	2.59 Miles	2.56 Miles
New Stations	Wilshire/La Brea Wilshire/Fairfax Wilshire/La Cienega	Wilshire/Rodeo Century City/ Constellation	Westwood/UCLA Westwood/VA Hospital
Pre-Construction Activities	2014 – 2015	2016 – 2018	2018 – 2019
Construction	2015 – 2024	2018 – 2025	2019 – 2027
Operations	2024	2025	2027

**Subject to change. The PLE project team is working to deliver the project consistent with Measure M.*

Westwood/UCLA Station Schedule

Activity Name	2020				2021				2022				2023				2024				2025			
	Q1	Q2	Q3	Q4	Q1	Q2	Q3	Q4	Q1	Q2	Q3	Q4	Q1	Q2	Q3	Q4	Q1	Q2	Q3	Q4	Q1	Q2	Q3	Q4
Advanced Utility Relocation (AUR)	█	█	█	█																				
UCLA Lot 36 Preparation	█	█	█	█	█	█	█	█	█	█	█	█	█	█	█	█	█	█	█	█	█	█	█	█
City Sewer/ Storm Drain Relocation					█	█	█	█	█	█	█	█												
Station Piling	█	█	█	█	█	█	█	█	█	█	█	█	█	█	█	█	█	█	█	█	█	█	█	█
Support of Excavation									█	█	█	█	█	█	█	█								
Station Decking	█	█	█	█	█	█	█	█	█	█	█	█	█	█	█	█	█	█	█	█	█	█	█	█
Station Box Excavation and Shoring													█	█	█	█								
Station Structure and Finishes	█	█	█	█	█	█	█	█	█	█	█	█	█	█	█	█	█	█	█	█	█	█	█	█
Street Restoration																					█	█		

Westwood/UCLA Station Rendering (Northwest)



Westwood/UCLA Station Rendering (Northeast)

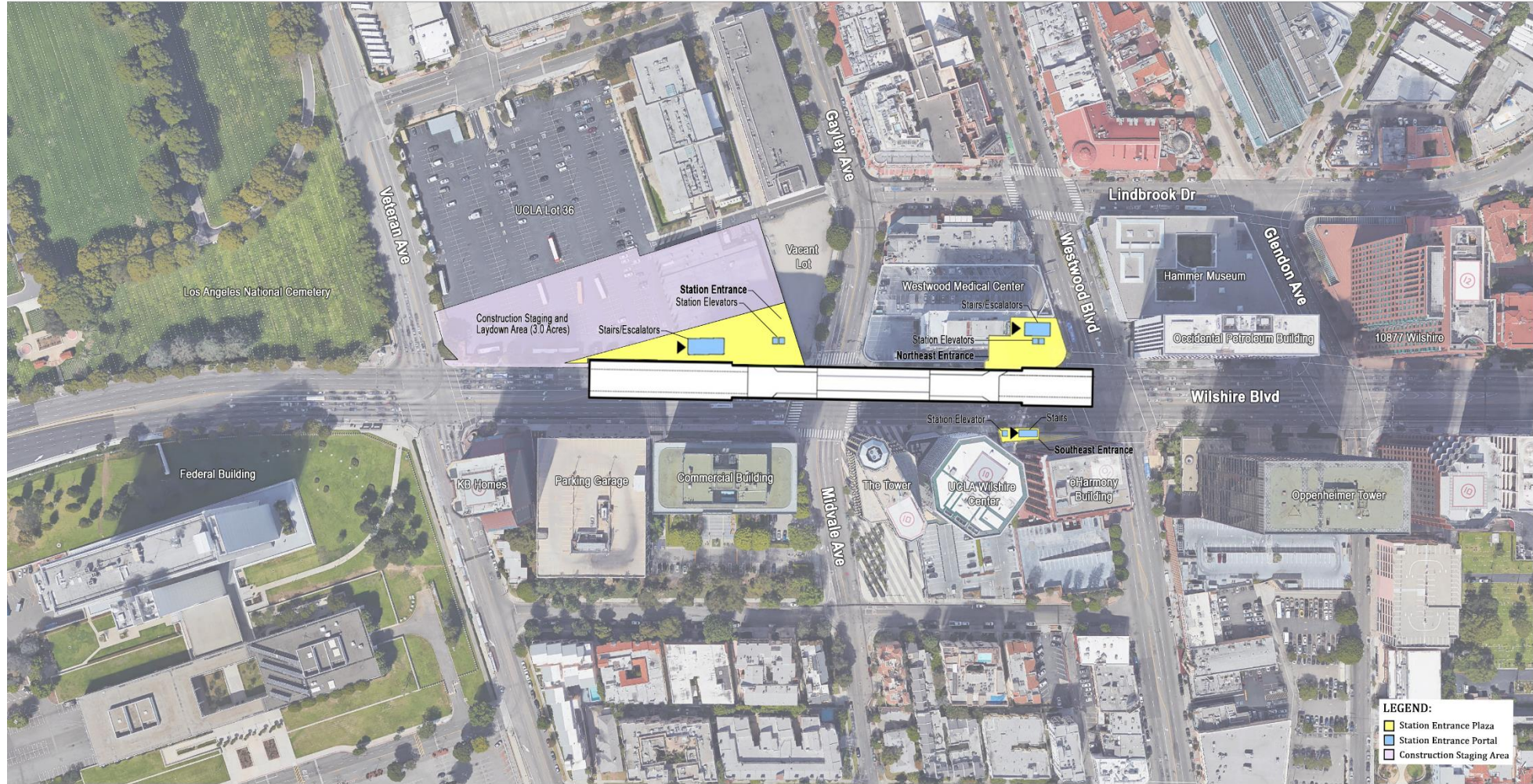


Westwood/UCLA Station Rendering (Southeast)

DRAFT



Westwood/UCLA Station Box



Rendering shows length of the underground station box on Wilshire Bl between Westwood Bl and Veteran Av

Piling for the Westwood/UCLA Station

- Piles support the walls underground for the Westwood/UCLA Station and support the decking that will be built over the street.
- Pile installation will be on Wilshire Bl between Westwood Bl and Veteran Av.

Pile installation includes:

- Drilling holes on average 85 ft in depth, place piles, back fill piles with concrete
- Complete and repeat around the perimeter of the station box
- Approximately 300 piles for the Westwood/UCLA Station, every 7 feet
- All work occurs behind K-rail

Piling for the Westwood/UCLA Station

Schedule

- Start in mid-August 2021* on north side of Wilshire Bl.
- There are 20 stages of pile installation with varying traffic patterns

Typical Work Schedule:

- Krail traffic configuration remains in place for entire duration of piling
- Work occurs 7 days a week behind krail
- Additional lane reductions may occur during off-peak hours

Work Activities:

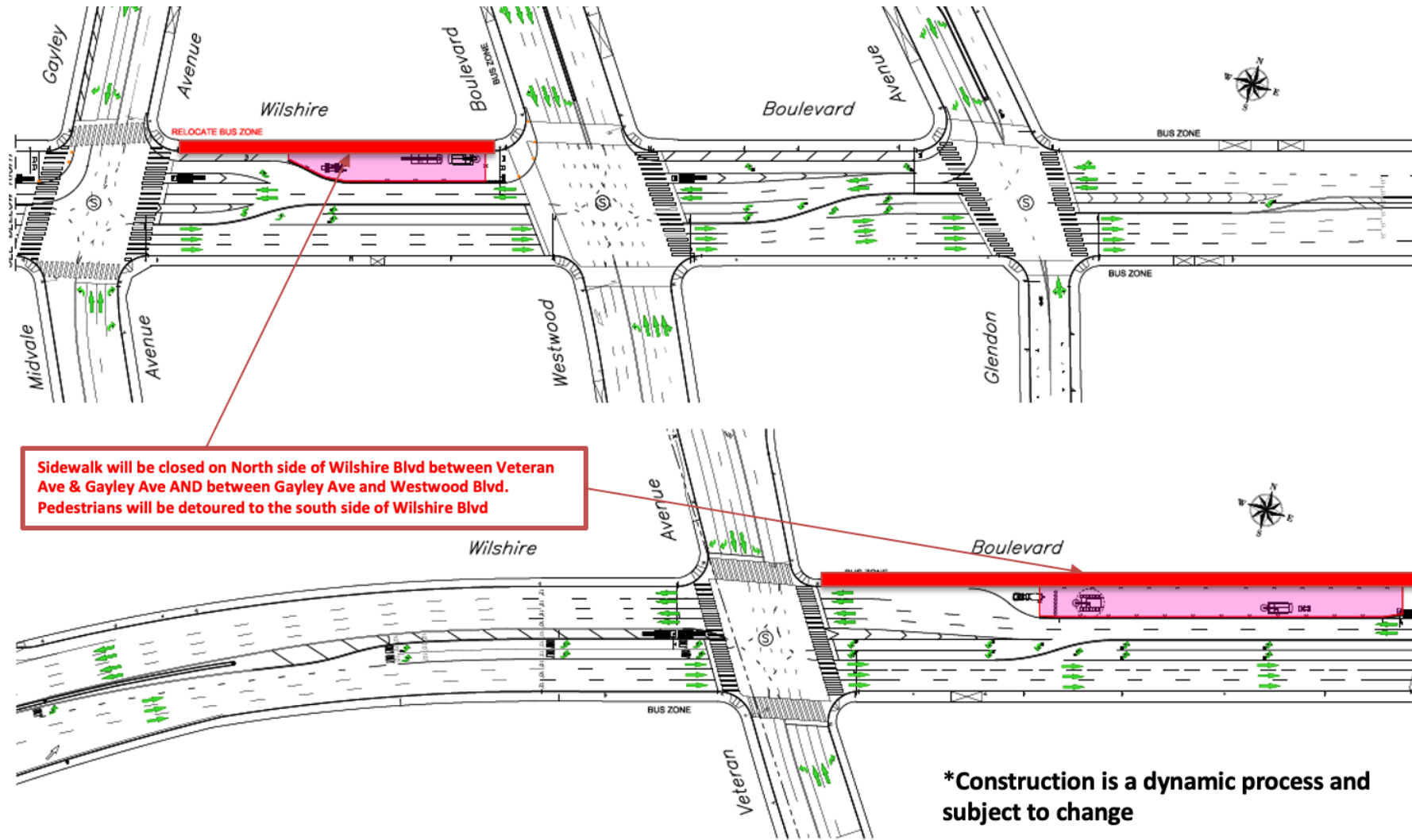
- 7am to 9pm, drilling
- 9pm to 11pm, non-drilling (equipment maintenance, cleaning, set up)





North Side Piling (Stage 1): Estimated 7 months

Anticipated Start: August 20, 2021



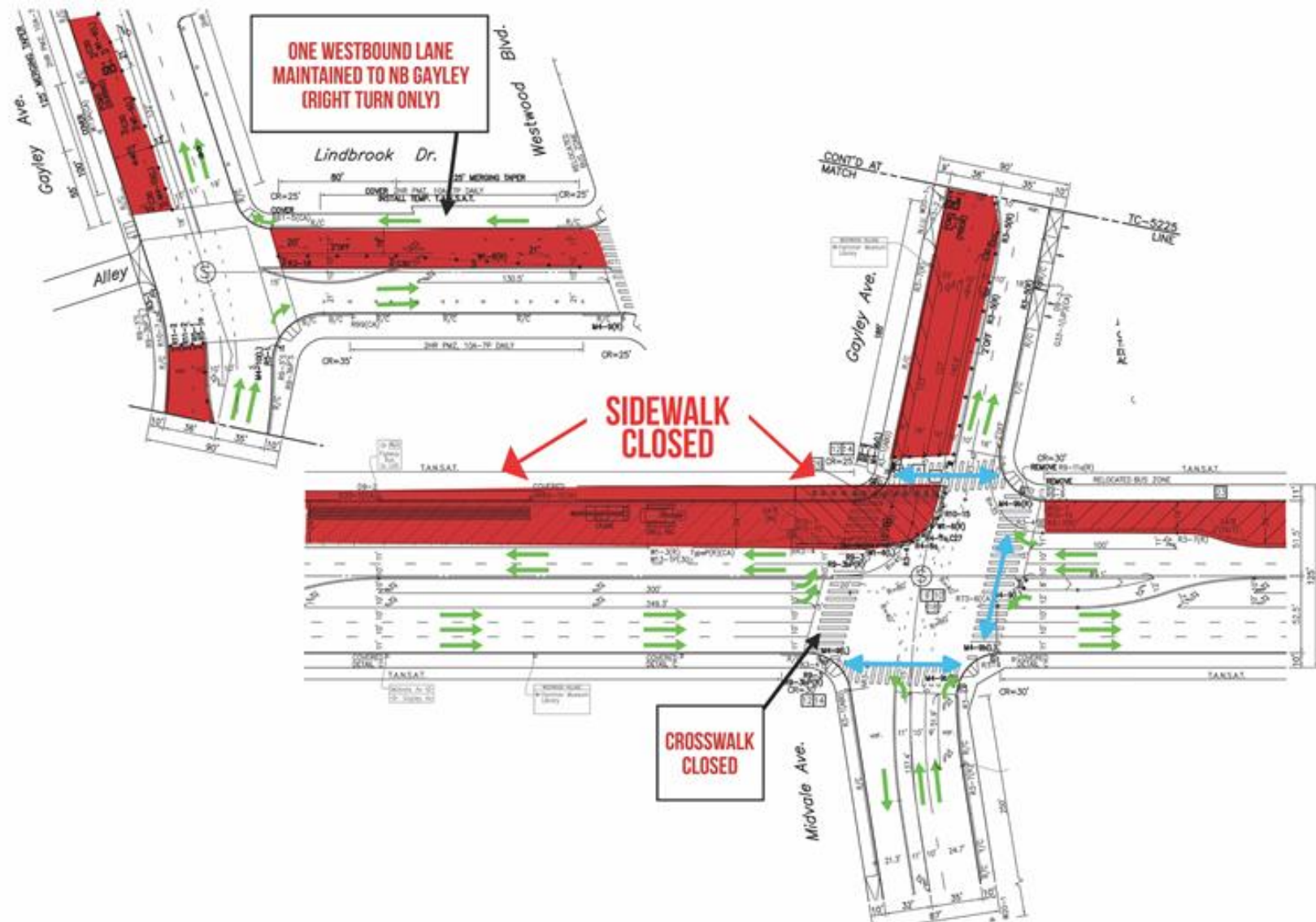
North Side wall Piling (Stage 1F + 1): Estimated 4 weeks

Nightly:

Mon–Thurs 9pm to 6am

Weekend:

9pm Fri – 6am Mon



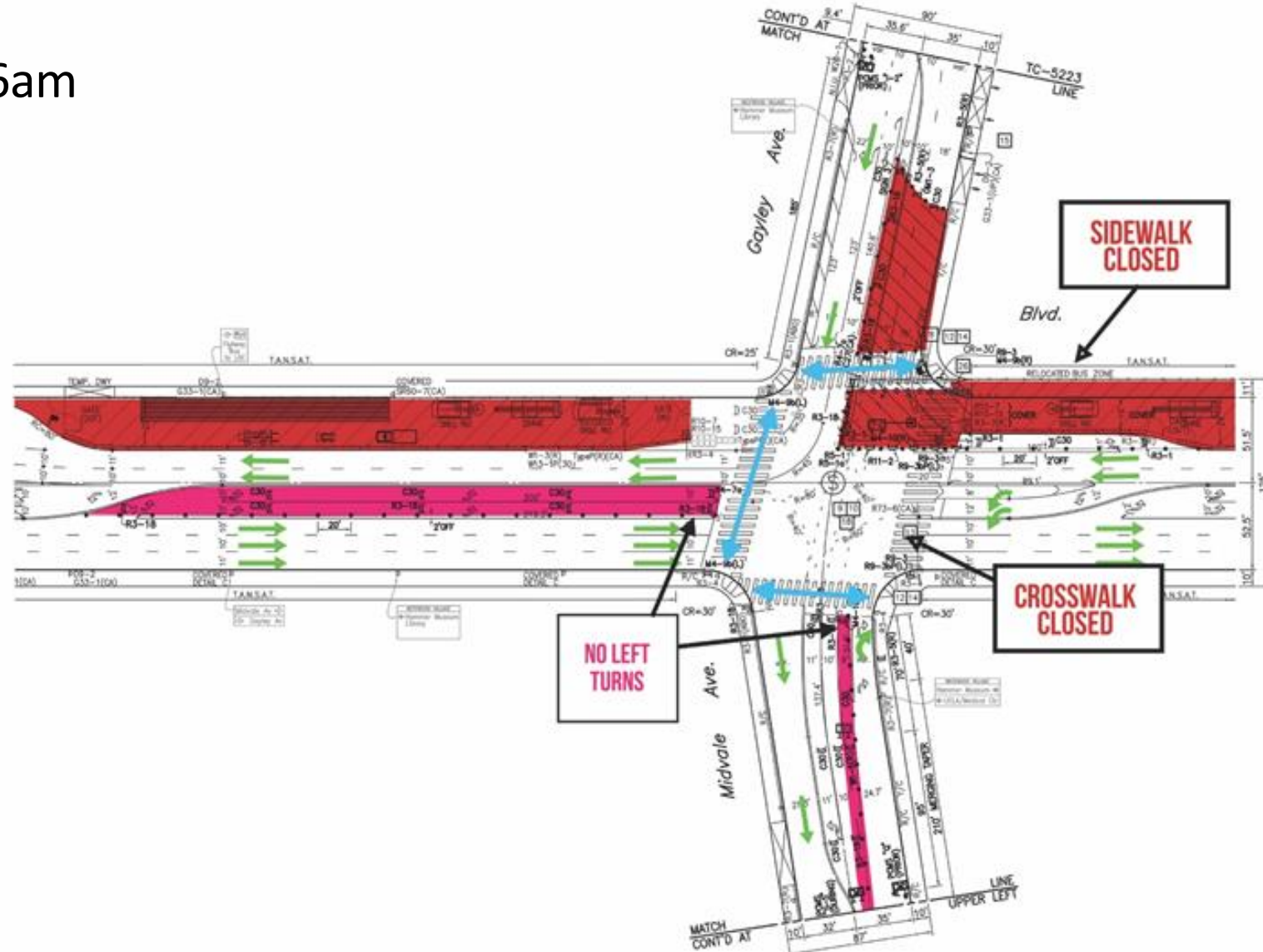
North Side Piling (Stage 1E + 1): Estimated 4 weeks

Nightly:

Mon–Thurs 9pm to 6am

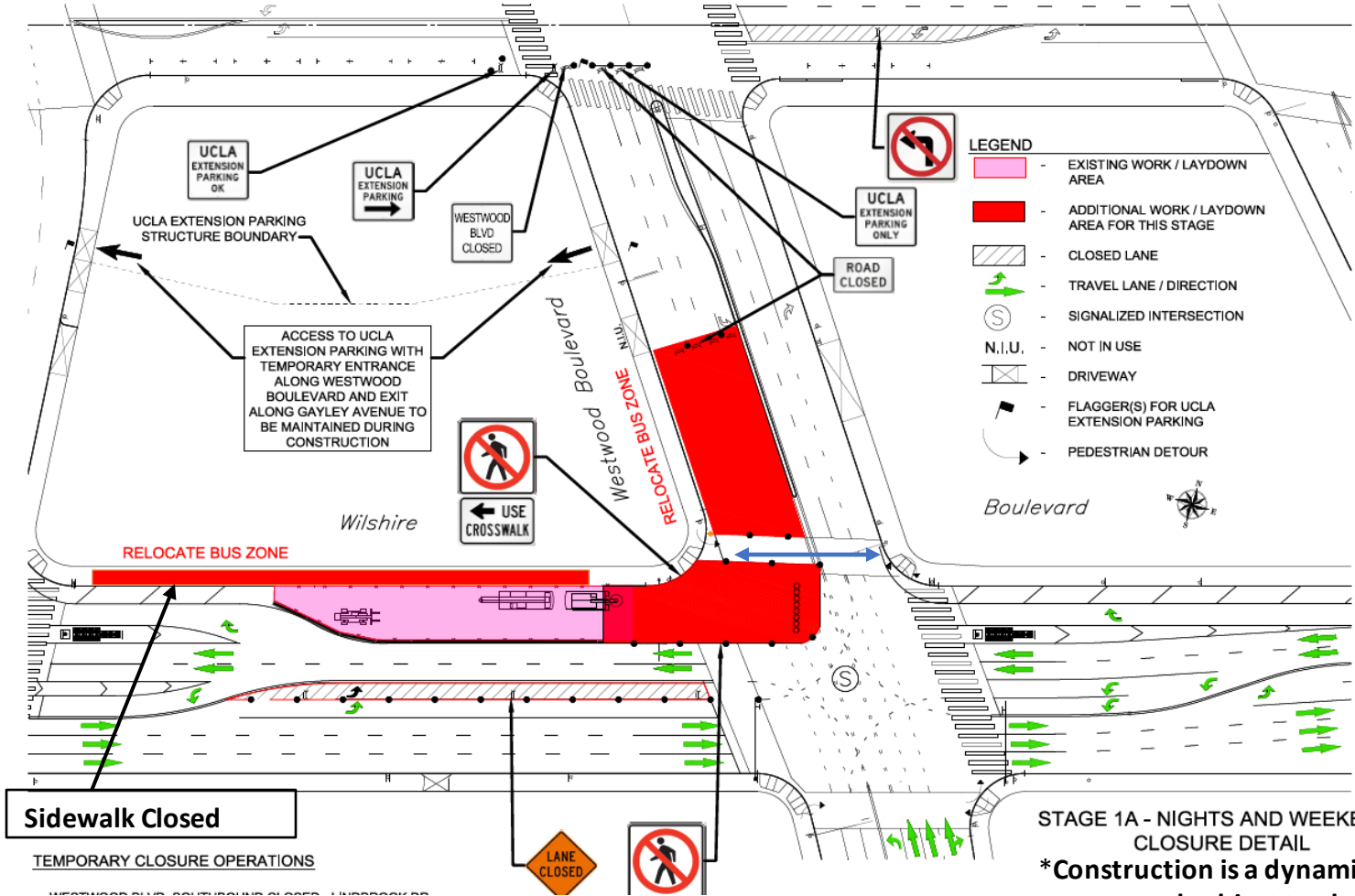
Weekend:

9pm Fri – 6am Mon



Northeast Entrance Piling (Stage 1A + 1): Estimated 5 weeks

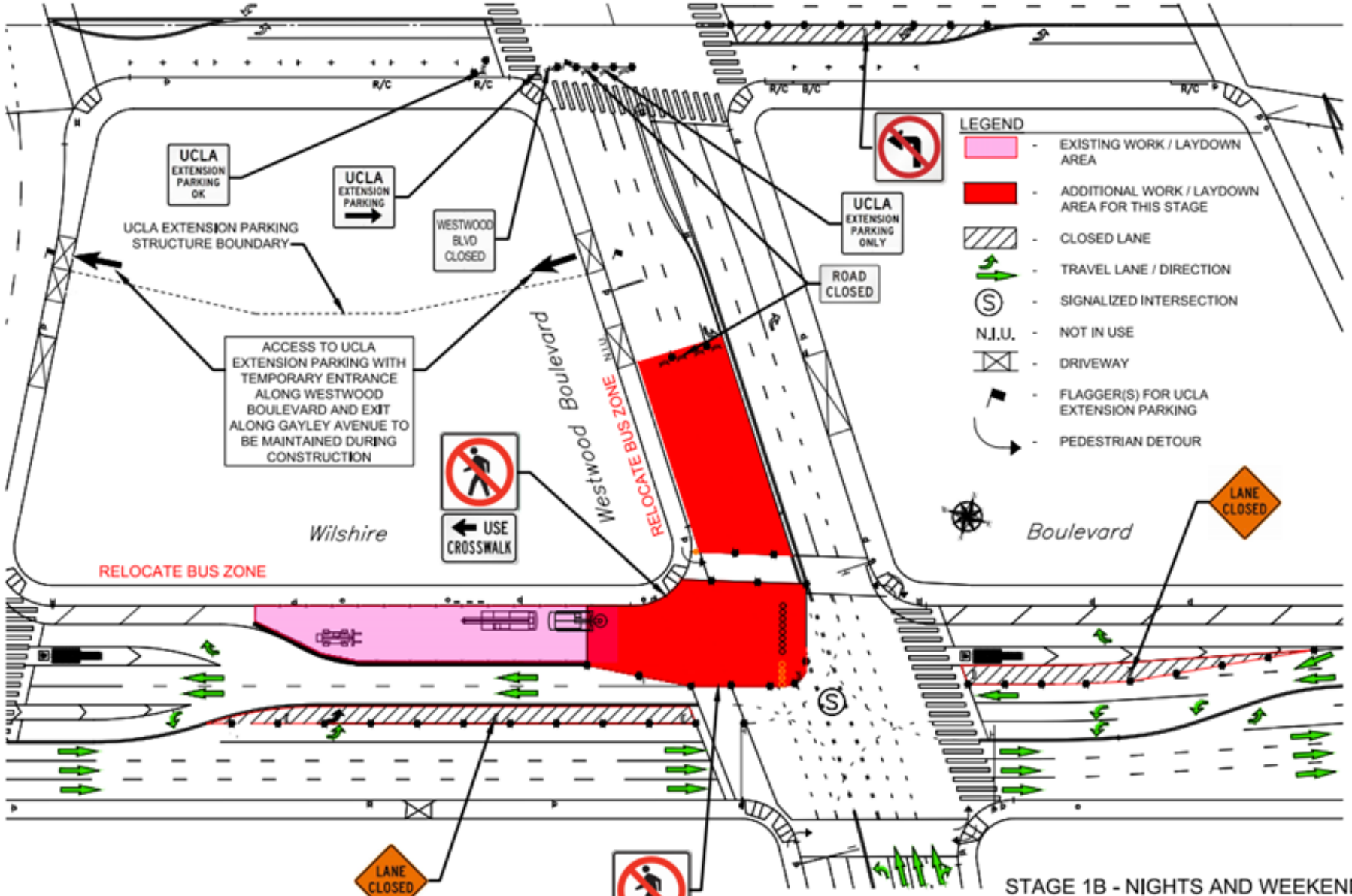
Nightly:
 Mon–Thurs 9pm to 6am
Weekend:
 9pm Fri – 6am Mon



STAGE 1A - NIGHTS AND WEEKENDS
 CLOSURE DETAIL
 *Construction is a dynamic
 process and subject to change

Northeast Entrance Piling (Stage 1B + 1): Estimated 3 weeks

Nightly:
Mon–Thurs 9pm to 6am
Weekend:
9pm Fri – 6am Mon



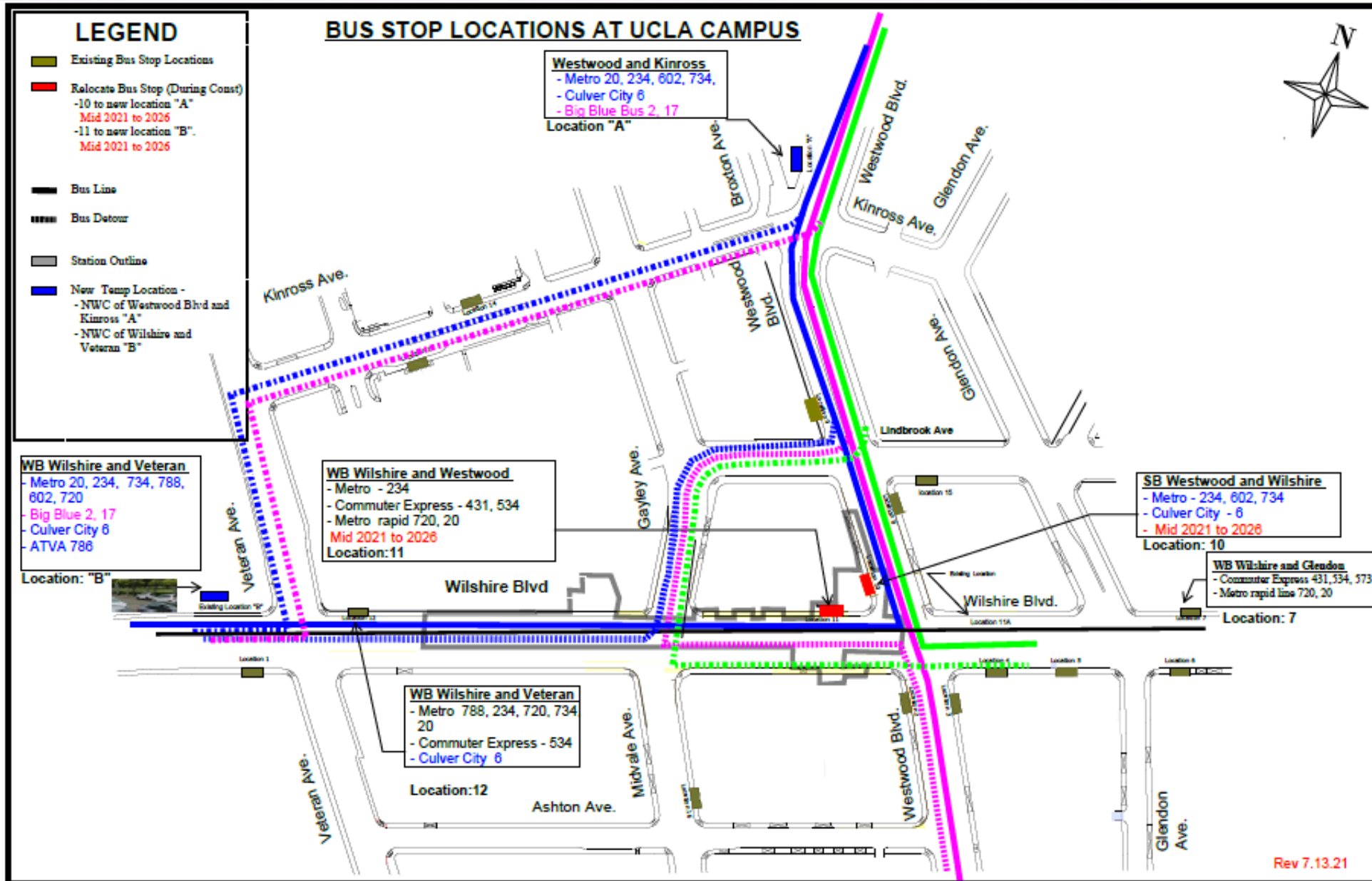
Decking Installation

- Anticipated Summer 2022*
- Deck installation will be on Wilshire Bl between Westwood Bl and Veteran Av.
- Construction of a concrete deck, curb to curb, approximately 12 ft deep.
- Decking will serve as temporary street surface.
- Traffic will travel on the deck panels while the station is constructed underground.
- Westwood/UCLA Station:
 - 894 ft long, 75 ft wide, 65 ft deep.





Temporary Bus Stops Relocation



Community Outreach

- Community Meetings
- Quarterly Webinars
- Monthly Westwood Building Managers Meetings
- Hand delivered construction notices
- Email construction notices and updates
- Paid media: radio, print, social media ads, UCLA kiosks

Construction Mitigation

- Traffic enforcement by LAPD
- Traffic control officers from LADOT
- Coordinated adjusted signal timing
- Pedestrian access is maintained
- Crosswalk detours around active construction areas
- Education and outreach to adjacent properties
- Coordination with other developers and nearby projects

Holiday Moratorium Exemption

- November 25 through January 1
- Coordination with Council District 5, Bureau of Engineering (BOE), and Department of Transportation (DOT)
- Continued work will ensure construction schedule is maintained.
- No work on Thanksgiving Day (November 25), Christmas Day (December 25), and New Year's Day (January 1).

EAT SHOP PLAY WESTWOOD

- Social media post on Twitter & Facebook
- Spotighting re-opened businesses
- Holidays, promotions, and events
- Weekly newsletters featuring businesses that are re-opening and business assistance programs
- 20%+ open rate
- Over 3K subscribers

Westwood



Sweetfin Poke

Craving a poke bowl or just some fresh fish? No worries! Sweetfin has made it easy for you by offering a selection of premium-grade raw fish, with or without marinade, and a selection of their sauces in bulk. Place your order for pick up or delivery and enjoy your favorite California inspired poke.



Tocaya Organica

Tocaya Organica is a modern Mexican restaurant that offers a healthy and flavorful version of tacos, burritos, salads, and bowls. In addition to this wide range of selection they are offering meal prep items to make lunch or dinner easier for you! Currently open for delivery and takeout.

EAT SHOP PLAY

Contact Us

- For more information on Eat Shop Play visit metro.net/eatshopplay
- Send an email to eatshopplay@metro.net



Business Interruption Fund (BIF)



Metro's Business Interruption Fund

Help small “mom and pop” businesses continue to thrive throughout construction and post construction.

- Financial assistance to small “mom & pop” businesses with 25 or fewer full-time employees directly impacted by Metro Rail construction along three project areas
 - Crenshaw/LAX Transit Project
 - Purple Line Extension, Sections 1, 2 & 3
 - Regional Connector Project, Little Tokyo area & 2nd/Broadway Segment
- Businesses must be located immediately adjacent to the rail corridor and meet other eligibility requirements

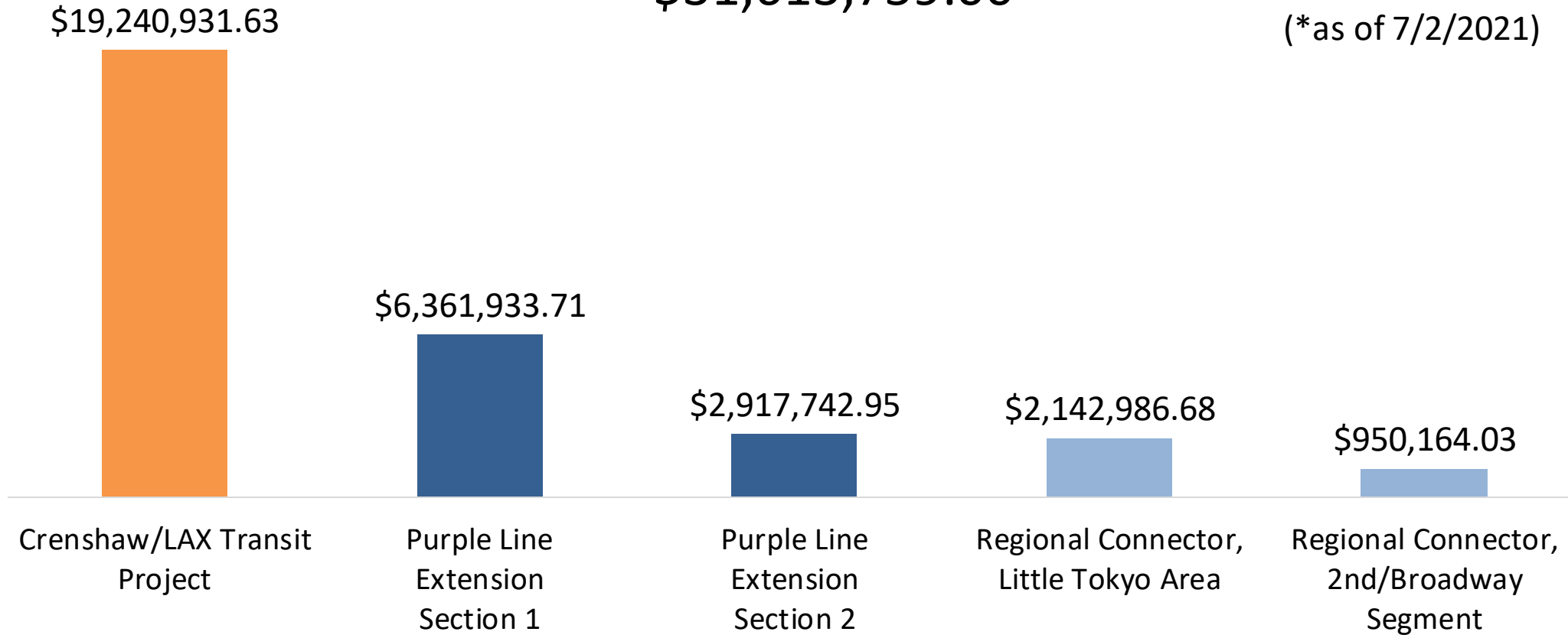
Metro's Business Interruption Fund

- Grant amount determined by business revenue loss directly related to period of Metro construction disruption
- Eligible businesses may receive up to \$50,000 per impact year
- Metro's BIF is administered as a pilot program in partnership with Pacific Coast Regional Small Business Development Corporation (PCR).
- For more information, please contact the BIF Fund Administrator Pacific Coast Regional at 213.739.2999 x223 or visit pcrcorp.org or contact Metro directly at bif@metro.net and metro.net/bif.

Metro's BIF during COVID-19 Pandemic

Value of BIF Grants Awarded:
\$31,613,759.00*

(*as of 7/2/2021)



***BIF Grants do not cover COVID-19 related impacts.**

Stay in Touch

Lunch with Us Webinar:

Sections 1, 2, and 3 Construction Update

August 4, 2021

12pm to 1pm

Link to webinars available at *metro.net/purple*



213.922.6934



purplelineext@metro.net



metro.net/purple



@purplelineext



facebook.com/purplelineext