

LOS ANGELES COUNTY METROPOLITAN TRANSPORTATION AUTHORITY NOTICE OF
INTENT TO ADOPT A MITIGATED NEGATIVE DECLARATION PURSUANT TO
CALIFORNIA ENVIRONMENTAL QUALITY ACT (CEQA) GUIDELINES SECTION ~15072

TO: AGENCIES, ORGANIZATIONS & INTERESTED PARTIES

SUBJECT: NOTICE OF INTENT (NOI) TO ADOPT A MITIGATED NEGATIVE DECLARATION PROJECT
TITLE: RED/PURPLE LINE CORE CAPACITY IMPROVEMENTS PROJECT

NOI DETAILS: This NOI is being re-published out of an abundance of caution regarding the past publication of the same NOI on December 19, 2016. The December 19 NOI contained a production error in that it did not include the end-date of the public comment period, which was January 19, 2017. Note that while there was no end-date in the original NOI, the original comment period end-date of January 19, 2017 was published in several places - on Metro's project website, in related public electronic communications, in the community meeting presentation held on December 21, 2016, on other stakeholder meeting dates during the original comment period, and in the documentation submitted to the California State Clearinghouse (on December 19, 2016). To sufficiently communicate the public comment period end-date, this NOI is being re-published with the Los Angeles County Clerk to specify a comment period end date of February 13, 2017, an extension of the comment period of an additional 25 days. **Other than the public comment period date and public meetings (to approve the project, a Final IS/MND, and mitigation measures) there is no new information associated with this project through this NOI.**

PROJECT LOCATION AND ENVIRONMENTAL SETTING: The proposed Project would be located within the existing Division 20 rail yard. The Division 20 rail yard is an approximately forty-five (45) acre site and is home to the Metro Red/Purple Line train storage and maintenance facilities. It is located primarily between the 1st and 4th Street bridges, running parallel to the Los Angeles River Channel and east of Santa Fe Avenue.

The Metro Red/Purple Line tunnel portal is situated between Commercial Street to the north; Ducommun Street to the south; Center Street to the west; and the Los Angeles River Channel to the east. Construction of the portal widening will require the acquisition of an existing industrial use (tow service storage yard) and partial acquisition of a vacant parcel for the turnback tracks.

The General Plan Land Use designation for the Project site and vicinity is cited in the City's zoning database (www.zimas.lacity.org) as Heavy/Light Manufacturing, as well as being identified as a transit priority area. There is one residential land use (One Santa Fe) located adjacent to the southwest corner of the proposed project. There are no other residential/housing, educational centers, institutional, or public open space uses in the immediate area (within 1,000 feet). A portion of this industrial project site is listed on the Department of Toxic Substances Control EnviroStor database.

PROJECT INITIATION: The CEQA lead agency for the project is the Los Angeles County Metropolitan Transportation Authority (Metro). Metro has prepared an Initial Study (IS) and draft Mitigated Negative Declaration (MND). This notice shall alert interested parties to the preparation of the IS/MND and decision to adopt an MND, describe the improvements, and invite public participation and review of the IS/MND.

PURPOSE AND NEED FOR THE PROJECT: The Project serves three important objectives: 1) It services as the new turn-back facility; 2) It will allow for an increase in train speeds and ensure the reliability of operations; and 3) The portal widening will ensure that Metro can operate safe and reliable service to meet the anticipated ridership and provide sufficient capacity to serve future passengers.

IMPROVEMENTS: The proposed Project will consist of four (4) turnback tracks aligning with three (3) proposed operations platforms, and will widen the existing tunnel portal.

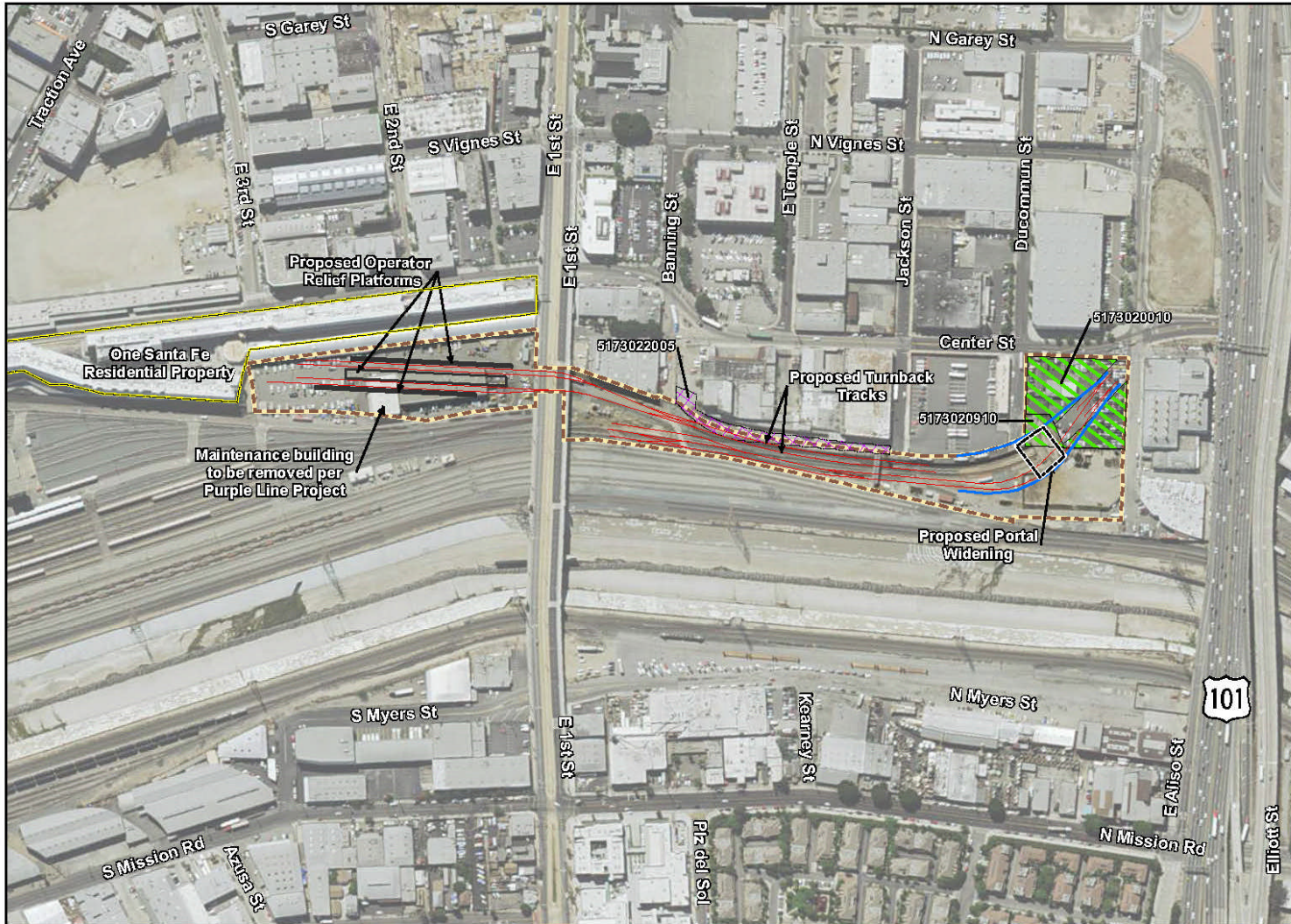
COMMENT PERIOD AND PUBLIC MEETING: The comment period commenced on December 19, 2016 and will end on February 13, 2017. The IS/MND will be available for public review at the Metro Transportation Library at One Gateway Plaza, 15th floor, Los Angeles, CA 90012; online at www.metro.net/capitalprojects; and at the following public library locations:

- Los Angeles Central Library, 630 W. 5th Street, Los Angeles, CA 90071
- Little Tokyo Branch Library, 203 S. Los Angeles Street, Los Angeles, CA 90012

Meetings to consider the approval of the proposed project, Final IS/MND and mitigation measures will be held by Metro Board's Construction Committee on February 16, 2017 at 9:00 a.m., and by Metro's Board of Directors on February 23, 2017 at 9:00 a.m. Both meetings will be held in the Metro Board Room, located at One Gateway Plaza, 3rd Floor, Los Angeles CA 90012.

ADDRESSES: Written comment should be sent to Dr. Cris B. Liban, D. Env., P.E., Executive Officer, Environmental Compliance and Sustainability, One Gateway Plaza, MS 99-17-2, Los Angeles, CA 90012-2952, LibanE@metro.net, 213-922-2471

FOR FURTHER INFORMATION CONTACT: Dr. Cris B. Liban, D. Env., P.E., Executive Officer, Environmental Compliance and Sustainability, One Gateway Plaza, MS 99-17-2, Los Angeles, CA 90012-2952, LibanE@metro.net, 213-922-2471

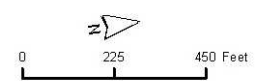


Red/Purple Line Core Capacity Improvements Project

- Legend**
- Proposed Platform
 - Proposed track
 - Proposed wall
 - Full Take
 - Partial Take
 - Project Footprint



Data Source: Esri, DigitalGlobe, GeoEye, 2016



Project Site