

---

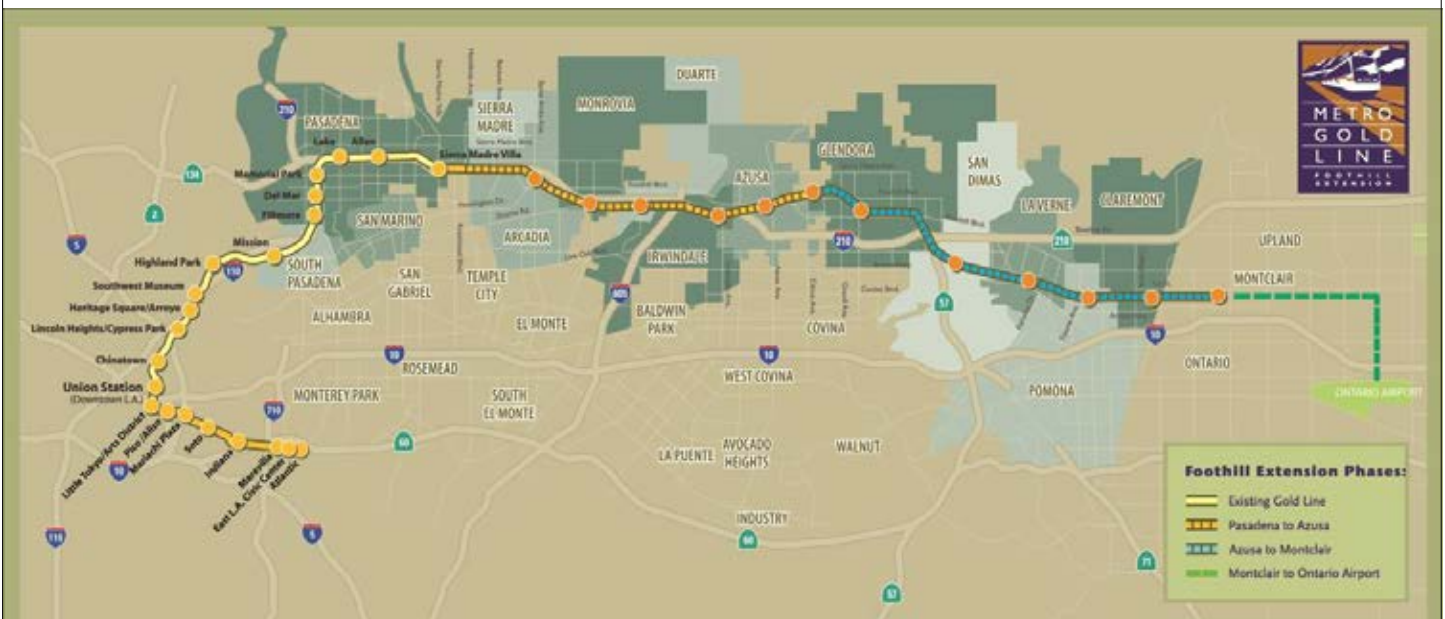
# Metro Gold Line

## Foothill Extension Project

---

### Monthly Project Status Report

March 2014



Metro Gold Line

Connecting Los Angeles, the San Gabriel Valley and Inland Empire





## TABLE OF CONTENTS

### **PHASE II FOOTHILL EXTENSION PROJECT STATUS**

<b>Project Description .....</b>	<b>3</b>
<b>Pasadena to Azusa Segment .....</b>	<b>4</b>
Management Issues .....	4
Key Activities Completed This Period .....	5
Key Future Activities.....	6
Critical Path Schedule .....	7
Critical Path Float Trend.....	8
Alignment Contract Status.....	9
Alignment Construction Progress This Period.....	11
Facility Construction Progress This Period .....	12
Alignment Construction Progress Next Period .....	13
Facility Construction Progress Next Period .....	14
Alignment Construction Images .....	15
Alignment Change Management Log.....	17
Parking Facilities and Enhancements Contract Status .....	21
Parking Facilities and Enhancements Construction Images .....	24
Parking Facilities and Enhancements Change Management Log .....	26
<b>Azusa to Montclair Segment .....</b>	<b>27</b>
<b>Ontario Airport Segment .....</b>	<b>28</b>
<b>Financial Status .....</b>	<b>29</b>



## FOOTHILL EXTENSION PROJECT DESCRIPTION

The Authority's mandate is to plan, design and construct a 37-mile light rail link between Downtown Los Angeles and Claremont. In addition, the San Bernardino Associated Governments (SANBAG) has requested that planning be extended one mile inside San Bernardino County to the City of Montclair and then to Ontario Airport.

The Metro Gold Line Phase II (Foothill Extension) corridor includes the cities of Pasadena, Arcadia, Monrovia, Duarte, Irwindale, Azusa, Glendora, San Dimas, La Verne, Pomona, Claremont, and Montclair; and the counties of Los Angeles and San Bernardino (Figure 1). The Foothill Extension is estimated to cost approximately \$1.719 billion.

The Foothill Extension will be built in two segments to align effectively with projected cash flows and financial capacity constraints. The first segment is defined from the Sierra Madre Villa Station in Pasadena to the city of Azusa. Revenue service along this segment is planned for the year 2015. The second segment would include an extension from Azusa to the City of Montclair with revenue service projected for the year 2017 and the third segment will be comprised of an extension from Montclair to the Ontario Airport.

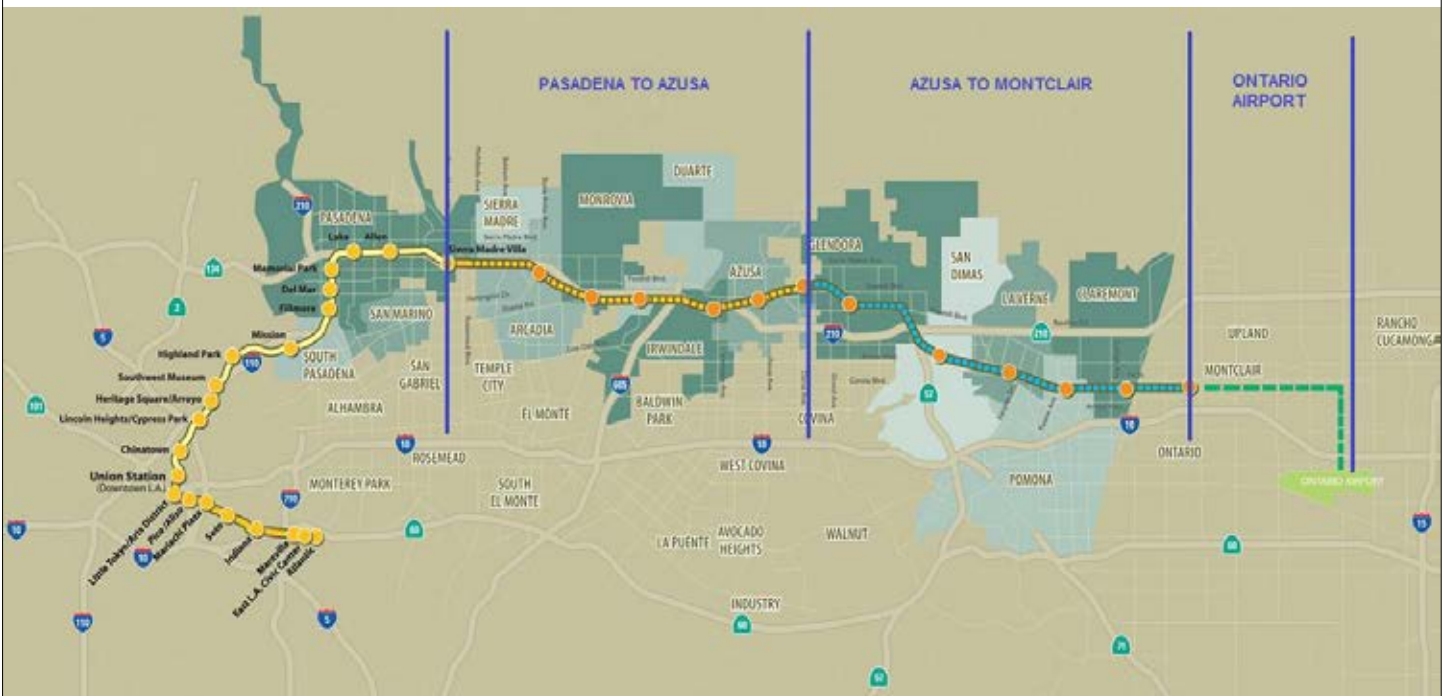


Figure 1: Metro Gold Line Foothill Extension Alignment



## **Pasadena to Azusa Segment**

### **MANAGEMENT ISSUES**

#### **Metro Betterments**

During the design process Metro staff have identified betterments that Metro staff would like to add to the project. Metro has provided a final disposition on all but a few items. Authority staff continues to work with Metro staff to resolve the remaining items.

#### **TPSS Delivery Dates**

The traction power substations (TPSS) provide equipment to transform utility power required for Light Rail Vehicle (LRV) propulsion, and then distribute that power to the LRVs via the overhead wires. Metro is responsible for purchasing the traction power substations. Currently, Metro's schedule indicates that the traction power substation delivery schedule is late. This is a major concern for the Authority as it has potential to impact the project schedule; however, staff is coordinating with Metro and FTC to ensure minimal impact to the project.



## **KEY ACTIVITIES COMPLETED THIS PERIOD**

Staff continued to attend coordination meetings with cities along the alignment

Authority staff continues to meet with Metro staff to review and discuss the status of the Pasadena to Azusa segment

Held regular meetings with the C1135 (DB2) contractor, Foothill Transit Constructors (FTC) and participated in construction site visits and audits

FTC reports the following SBE statistics for the month of November:

- Current SBE commitment: \$ 59,500,000
- SBE percent committed versus value of Project: 16.83%
- Overall Authority Project SBE goal: 16%

FTC reports the following approximate safety statistics to date:

- 631,929 total work hours performed by FTC, Mass Electric, and Subcontractors
- 5 recordable injuries reported
- 0 lost time injuries reported

Webcor reports the following approximate safety statistics to date:

- 34,787 total work hours performed by Webcor and Subcontractors
- 0 recordable injuries reported
- 0 lost time injuries reported

Continued installation of duct bank, underdrain, and sub-ballast throughout the project (near complete)

Continued trackwork at the Gold Line Operations Campus (Campus) - 50% complete

Continued OCS and Site Lighting Pole erection at the Campus

Continued bridge work at Rosemead, Huntington, Kincaid, and Foothill

Continued work at Azusa-Downtown, Azusa-Citrus, Irwindale, Duarte, Monrovia and Arcadia stations

Continued construction of San Gabriel and Myrtle grade crossings

Completed 1st & Santa Clara crossing

Continued installation of freight track between San Gabriel River Bridge and San Gabriel Avenue

Continued construction of light rail mainline track—21% complete

Continued to hold design and coordination meetings with DB3 contractor, Webcor Builders, for the Intermodal Parking Facilities and Enhancements Contract 1150

Authority continued reviewing design submittals for Azusa-Citrus and Irwindale structures and enhancements

Continued construction of Arcadia, Monrovia, and Azusa-Citrus Parking Structures

Webcor completed the Michillinda and Soldano TPSS sites



## **KEY FUTURE ACTIVITIES**

Continue discussions with corridor cities regarding the project

Continue management of the Alignment contract, which will include oversight of construction activities and preparation for start-up activities

Continue to meet with Intermodal Parking Facilities and Enhancements Project contractor, Webcor Builders regarding design of the Project

Continue to attend to any issues that may come up by the cities or other stakeholders along the alignment

Complete trackwork at the Campus

Complete construction of the bridges at Foothill, Kincaid, Huntington, and Rosemead

Complete construction of all stations

Finish work at San Gabriel and Myrtle grade crossings

Begin work at Virginia, Magnolia, and Mountain grade crossings

Finalize design for first three Parking Facilities

Finalize the following property acquisitions:

- Arcadia:

1. Parcel 1301a (Front St. Vacation) – Motion for Possession filed with the court. 4/29/14 Hearing.
2. Parcel 1301b (Front St. Vacation) – Agreement reached. Ready for escrow.
3. Parcel 1308 (223 N. First Ave) – Settlement offer submitted for 4/23/14 Board meeting.
4. Parcel 6039 (325 N. Santa Anita Ave) – In escrow.

- Monrovia:

1. Parcel 1802/6035/6030 (1522 S. Mayflower Ave) – In escrow.
2. Parcel 1805/6035/6030 (1602 S. Mayflower Ave) – In escrow.

- Duarte:

1. Parcel 6041/6042 (1500 Duarte Rd) – Accepted. Purchase and sale agreement needs to be signed by seller.

- Azusa:

1. Parcel 6032 (819 W. 6th St) – Resolution of Necessity hearing 4/3/2014.
2. Parcel 6033 (809 E. Santa Fe) – Negotiating with property owner.

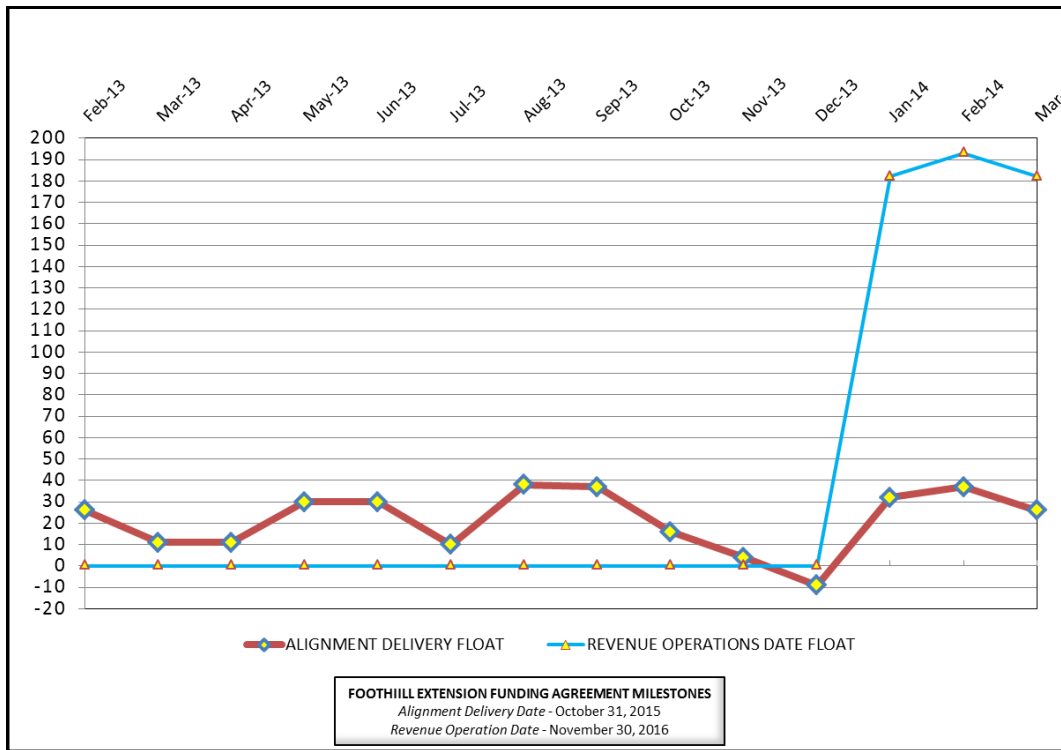


**CRITICAL PATH SCHEDULE**

Activity Name	OD	RD	AD	Start	Finish	Total Float	Timeline																			
							2012				2013				2014				2015				2016			
							Q2	Q3	Q4	Q1	Q2	Q3	Q4	Q1	Q2	Q3	Q4	Q1	Q2	Q3	Q4	Q1	Q2	Q3	Q4	
<b>REVENUE OPERATIONS DATE - CRITICAL PATH</b>																										
RFP - LRV PROCUREMENT	375	0	557	18.Oct.10 08:00 A	26.Apr.12 15:00 A		[Gantt bar from Q4 2010 to Q1 2012]																			
LRV FABRICATION / DELIVER 15 VEHICLES	1353	585	575	17.Aug.12 07:00 A	20.Oct.15 15:00	197	[Gantt bar from Q3 2012 to Q4 2015]																			
METRO - Pre-Revenue Operations - Phase 2A	60	60	0	05.Nov.15 07:00	03.Jan.16 15:00	182	[Gantt bar from Q4 2015 to Q1 2016]																			
METRO - Project Schedule Contingency (5 Mo.)	150	150	0	04.Jan.16 07:00	01.Jun.16 15:00	182	[Gantt bar from Q1 2016 to Q2 2016]																			
Phase 2A - Revenue Operations Date (ROD)	0	0	0		01.Jun.16 15:00*	182	[Gantt bar from Q2 2016 to Q2 2016]																			
<b>ALIGNMENT DELIVERY DATE - CRITICAL PATH</b>																										
HUNTINGTON BRIDGE - CONSTRUCTION	165	137	45	13.Jan.14 07:00 A	23.Sep.14 15:00	19	[Gantt bar from Q1 2014 to Q3 2014]																			
TRACK INSTALLATION - SEGMENT 2	95	95	0	11.Jun.14 07:00	21.Oct.14 15:00	19	[Gantt bar from Q2 2014 to Q4 2014]																			
HUNTINGTON BRIDGE REHABILITATION - CONSTRUCTION	50	50	0	08.Aug.14 07:00	16.Oct.14 15:00	19	[Gantt bar from Q3 2014 to Q4 2014]																			
INTERLOCK '3' - INSTALL INSTRUMENT HOUSE/WIRE & TERMINATIONS	45	45	0	18.Sep.14 07:00	19.Nov.14 15:00	19	[Gantt bar from Q4 2014 to Q1 2015]																			
INTERLOCK PULL SIGNAL CABLE ('3' to '4')	30	30	0	09.Oct.14 07:00	19.Nov.14 15:00	19	[Gantt bar from Q4 2014 to Q1 2015]																			
INTERLOCK TEST SIGNAL CABLE ('3' to '4')	20	20	0	20.Nov.14 07:00	17.Dec.14 15:00	19	[Gantt bar from Q1 2015 to Q1 2015]																			
INTERLOCK TEST SIGNAL CABLE ('1' to '2')	20	20	0	18.Dec.14 07:00	14.Jan.15 15:00	19	[Gantt bar from Q1 2015 to Q1 2015]																			
INTERLOCK TEST SIGNAL CABLE ('2' to '3')	20	20	0	15.Jan.15 07:00	11.Feb.15 15:00	19	[Gantt bar from Q1 2015 to Q1 2015]																			
INTERLOCK TEST SIGNAL CABLE ('7' to '8')	21	21	0	12.Feb.15 07:00	12.Mar.15 15:00	19	[Gantt bar from Q1 2015 to Q1 2015]																			
INTERLOCK TEST SIGNAL CABLE ('6' to '7')	21	21	0	13.Mar.15 07:00	10.Apr.15 15:00	19	[Gantt bar from Q1 2015 to Q1 2015]																			
INTERLOCK TEST SIGNAL CABLE ('5' to '6')	21	21	0	13.Apr.15 07:00	11.May.15 15:00	19	[Gantt bar from Q1 2015 to Q1 2015]																			
SYSTEMS INTERGRATION TESTING	125	125	0	14.Apr.15 07:00	05.Oct.15 15:00	19	[Gantt bar from Q1 2015 to Q4 2015]																			
C1135 - >>>SUBSTANTIAL COMPLETION - 1420 CD<<<	0	0	0		05.Oct.15 15:00*	26	[Gantt bar from Q4 2015 to Q4 2015]																			
METRO - System Testing & Start-Up - Phase 2A	30	30	0	06.Oct.15 07:00	04.Nov.15 15:00	182	[Gantt bar from Q4 2015 to Q4 2015]																			



### CRITICAL PATH FLOAT TREND



#### Revenue Operations Date Critical Path - (182 Calendar Days)

The Alignment Delivery has superseded the Metro light rail vehicle fabrication and delivery on the Revenue Operations Date critical path. The Alignment Substantial Completion has slipped eleven (11) days this period. As a result, the schedule slip will impact Metro's System Testing & Start-Up, which is now projected to be complete on November 4, 2015. The P3010 Vehicle Procurement, which is on a parallel path to Metro's Pre-Revue Operations, continues to report acceptance of the 15th production vehicle on October 20, 2015. Pre-Revenue Operations is projected to start on November 5, 2015 and completed by January 3, 2016.

Since the project has surpassed the 50% mark, Metro has reduced the 10 month schedule contingency to 5 months. As a result, the Metro Revenue Operations Date is June 2016, which is 6 months ahead of the target date per the Funding Agreement date of November 2016. However, Metro is forecasting a March 2016 Revenue Operations Date.

#### Alignment Delivery Date Critical Path - (26 Calendar Days)

This period, the critical path continues through the Huntington Bridge. The bridge shop drawings approval continues to delay the steel girder fabrication and installation. The critical path continues through rehabilitation of the existing Huntington Bridge, which will allow the completion of the final section of Segment 2 track between 1st/Santa Clara to 5th Avenue. The remainder of the critical path continues through the train control installation and testing, which will be followed by systems integration testing. Upon the completion of Systems Integration testing, FTC will achieve Substantial Completion and turn-over to Metro for System Testing & Start-Up, and Pre-Revenue Testing.

Other elements of construction work, which are in progress and near critical are Rosemead Bridge Rehabilitation, Myrtle Grade Crossing, Segment 4 Grading & Drainage, Irwindale Station Platforms and Foothill Freight Bridge.

#### Project Float

The project float for the Revenue Operations Date improved to 182 days. The critical activities on this path are on scheduled to meet the Target Revenue Operations Date of November 2016. The Alignment Delivery Date float value slipped 11 days this period. The Alignment Delivery Date is currently 26 days ahead of the October 31, 2015 deadline.



**Description:** Alignment Design / Build

**Status:** March 15, 2014

**Contract No.:** C1135

**Contractor:** Foothill Transit Constructors (Kiewit-Parsons J.

**Progress Completed This Period**

**Design**

- Submit AFC Design - Mountain Bungalow Drainage & Fence
- Submit AFC Design - Communications Book of Plans
- Submit AFC Design - Wayside Signage
- Submit AFC Design - St. Joseph TPSS Wall

**Activities Planned Next Period**

**Design**

- Submit AFC Design - Bungalow Fire Alarms
- Submit AFC Design - Parking Structure Fire Alarms

**Construction**

- See "Construction Progress This Period"

**Construction**

- See "Construction Progress Next Period"

**Areas of Concern**

- **Grade Crossing Schedule.** The Grade crossing durations and schedules are slipping due to productivity. The Authority is working with the Design-Build Contractor to plan grade crossing activities and complete the work within the constraints established by Cities. The Design-Build Contractor has implemented the revised grade crossing sequence and has mitigated potential CPM schedule delays. However, the Design-Build Contractor has indicated in the revised schedule, that the re-sequence was due to additional schedule requirements by the Cities and may require additional costs.

**Areas of Concern (Continued)**

-



**Description:** Alignment Design / Build

**Status:** March 15, 2014

**Contract No.:** C1135

**Contractor:** Foothill Transit Constructors (Kiewit-Parsons J.V.)

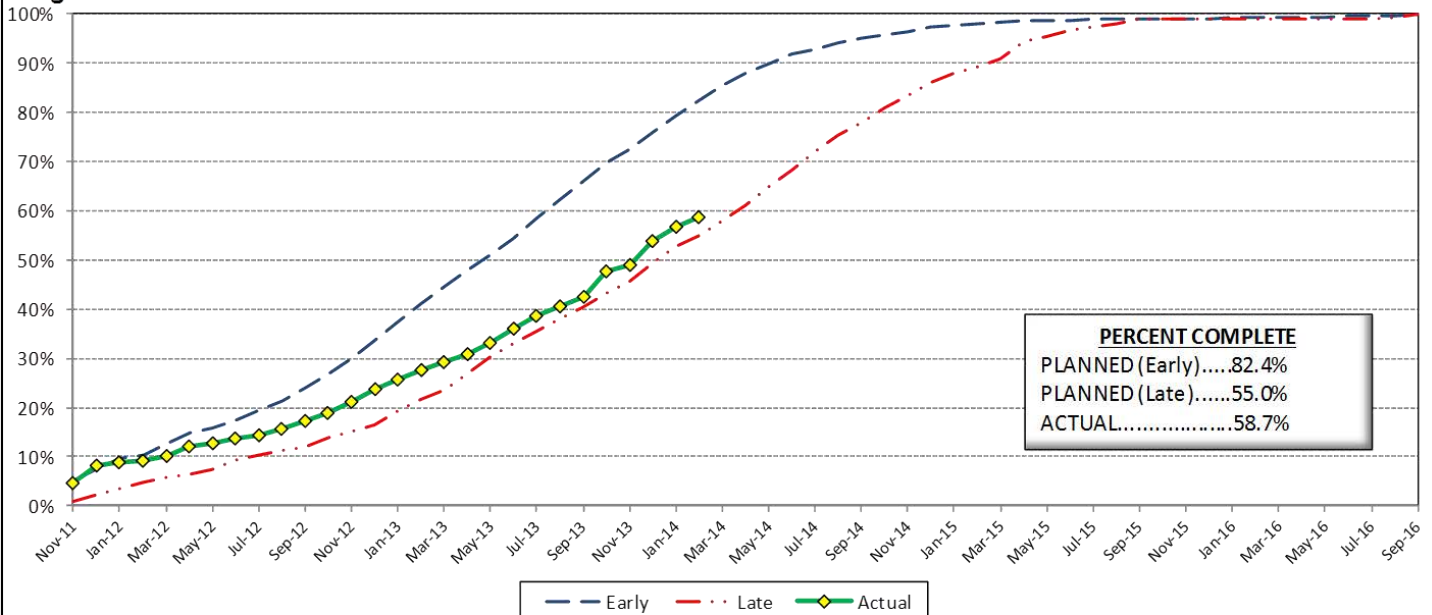
**Cost Summary:**

	Million(s)
<b>CONTRACT</b>	
Contract Award Value:	485.9
Executed Change Orders:	9.8
Current Contract Value:	495.6
Potential Change Orders:	3.0
Current Forecast:	498.6
Earned Value/Actual Cost	284.1
<b>AUTHORIZATION FOR EXPENDITURE</b>	
Budget	507.6
Commitment	503.6
Balance	5.0

**Cost Assessment:**

This period the Contract forecast increased \$200,000. The major increase was due to CO 083 - *Cut and Move Rail to Segment 1*, PCO 070 - *Irwindale Security Kiosk Provisions*, PCO 071 - *Remove Stem Wall Along Duarte Rd*, and PCO 073 - *Virginia TPSS Access Rd*. The period cost increase was offset by cost a decrease due to PCO 053.01 - *Irwindale Ramp Changes*, PCO 062 - *Delete Equipment at ROC*, and CO 082 - *Rockvale Water Line Mitigation*. The Design-Build Contractor has earned \$284.1 Million and is currently 58.7% complete. The progress is currently 23.7% behind the early planned curve, which is due to fabrication and delivery progress for materials such as Special Track Work, Steel Bridge Girders and M&O Equipment. In addition, the Segment 3 track work installation and Azusa Citrus and Alameda Stations are behind the baseline plan.

**Progress Curve**



**Schedule Summary:**

Contract Award:	07/27/11
Interim Notice to Proceed (INTP) :	11/03/11
Original Contract Duration:	1,780 Calendar Days
Current Contract Duration:	1,780 Calendar Days
Elapsed Time from NTP:	863 Calendar Days

**Contract Milestones**

Milestones	Description	Original Contract	Current Contract	Forecast	Variance
1	Substantial Completion	09/23/15	09/23/15	10/05/15	(12)
2	Punchlist Complete	06/19/16	06/19/16	07/01/16	(12)
3	Final Completion	09/17/16	09/17/16	09/29/16	(12)
4	Access - IFS Br.	12/15/12	12/15/12	12/15/2012 A	0
5	Test Track Complete	03/27/15	03/27/15	04/20/15	(24)
6	Colorado Br. Demo Complete	02/01/12	02/01/12	6/15/2012 A	(135)

**Schedule Assessment:**

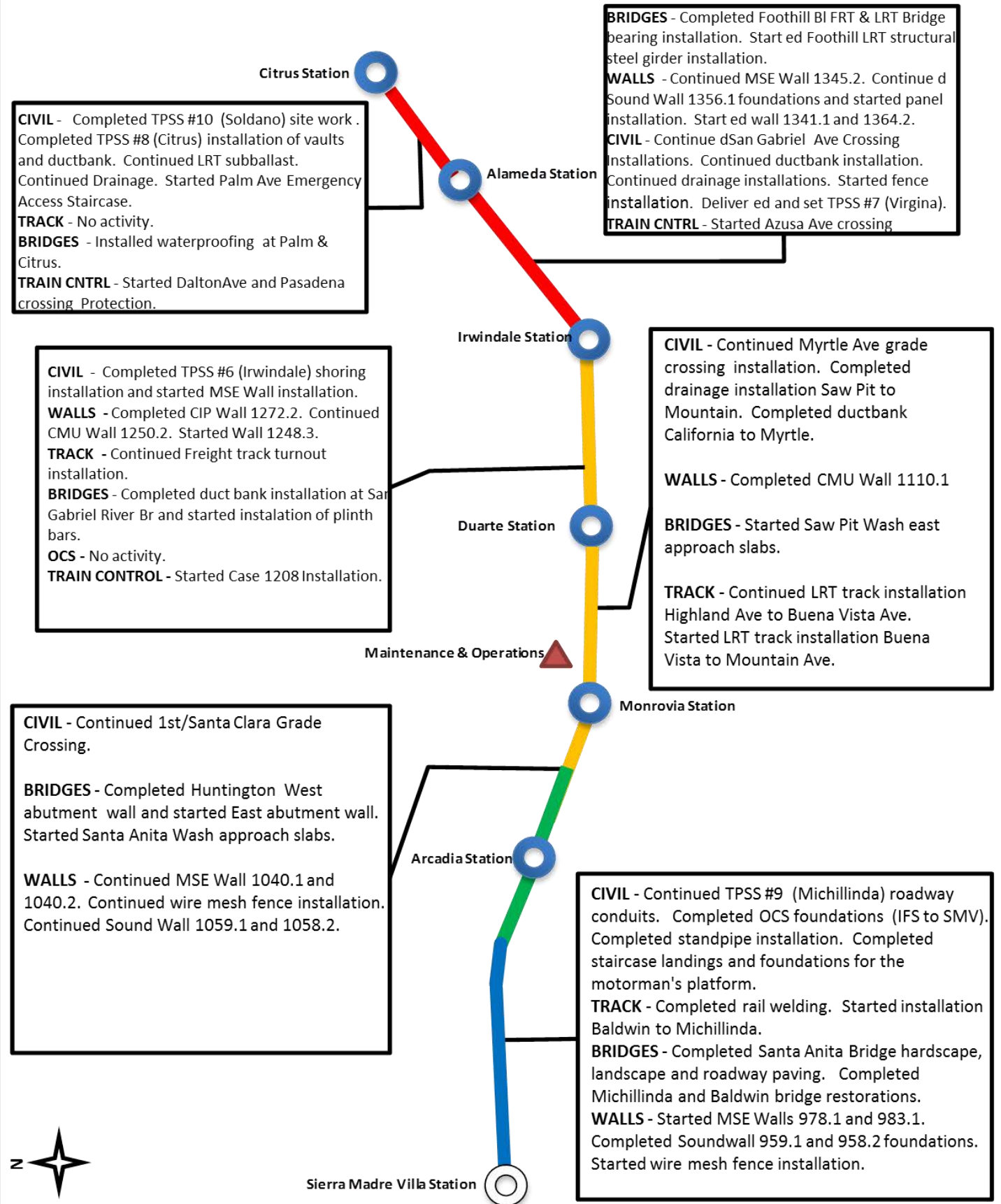
The critical path slipped eleven (11) days from the previous period. The schedule slip is due to the Huntington Bridge shop drawing approval. Upon approval of the shop drawing submittal, the steel girders will be released to start fabrication. The Huntington Bridge fabrication and installation continues to be the primary critical path. There are several other areas, which are near critical and need to be completed or started within the next few months in order to provide track access on schedule. These areas include: Foothill Blvd Freight Bridge, Rosemead BI Bridge, Irwindale Station Platform and Shamrock Avenue Waterline.

The schedule contains minimal float between all Segments and will require concurrent installation of track work in Segments 1, 3 and 4. In addition, OCS installation will require early access to begin pole installations after track line sections are completed within each segment.

The Test Track Completion is forecast to be available on April 20, 2015, which is 24 days behind the target date.



## ALIGNMENT CONSTRUCTION PROGRESS THIS PERIOD





**FACILITY CONSTRUCTION PROGRESS THIS PERIOD**

**Citrus Ave Station**

**STATION** - Continued installation of platform walls. Started installation of conduits.  
**PARKING** - No activity.

**STATION** - Completed south platform platform walls. Completed south platform footing backfill. Completed South Platform conduits. Started South platform deck. Completed North platform footing. Started North Platform walls. Started North platform conduits.  
**PARKING** - No activity.

**Alameda Station**

**STATION** - Started platform footing excavation, and the installation of grounding & underground conduits.  
**PARKING** - Completed site clearing.

**Irwindale Station**

**CIVIL** - Continued Shamrock 8" waterline. Completed TPSS meter pad.  
**TRACK** - Completed embedded track installation at Service & Inspection, and Blowdown. Continued Ballast and track installation at North Storage Track and Turnout Switches.  
**STRUCTURES** - Continued M&O Building structural steel installation and started the installation of 2nd floor metal decking. Started Car Wash foundations.  
**OCS** - Started poles and hardware installation at North Storage track area.

**STATION** - Started light bollards and Art Installations.  
**PARKING** - No activity planned.

**Duarte Station**

**STATION** - Completed ramps footings at the North and South Platforms. Started ramp walls at North and South Platforms.  
**PARKING** - Continued installation of footings. Continued level 1 column rebar and forms. Started elevator pit excavations and invert.

**Maintenance & Operations**

**Monrovia Station**

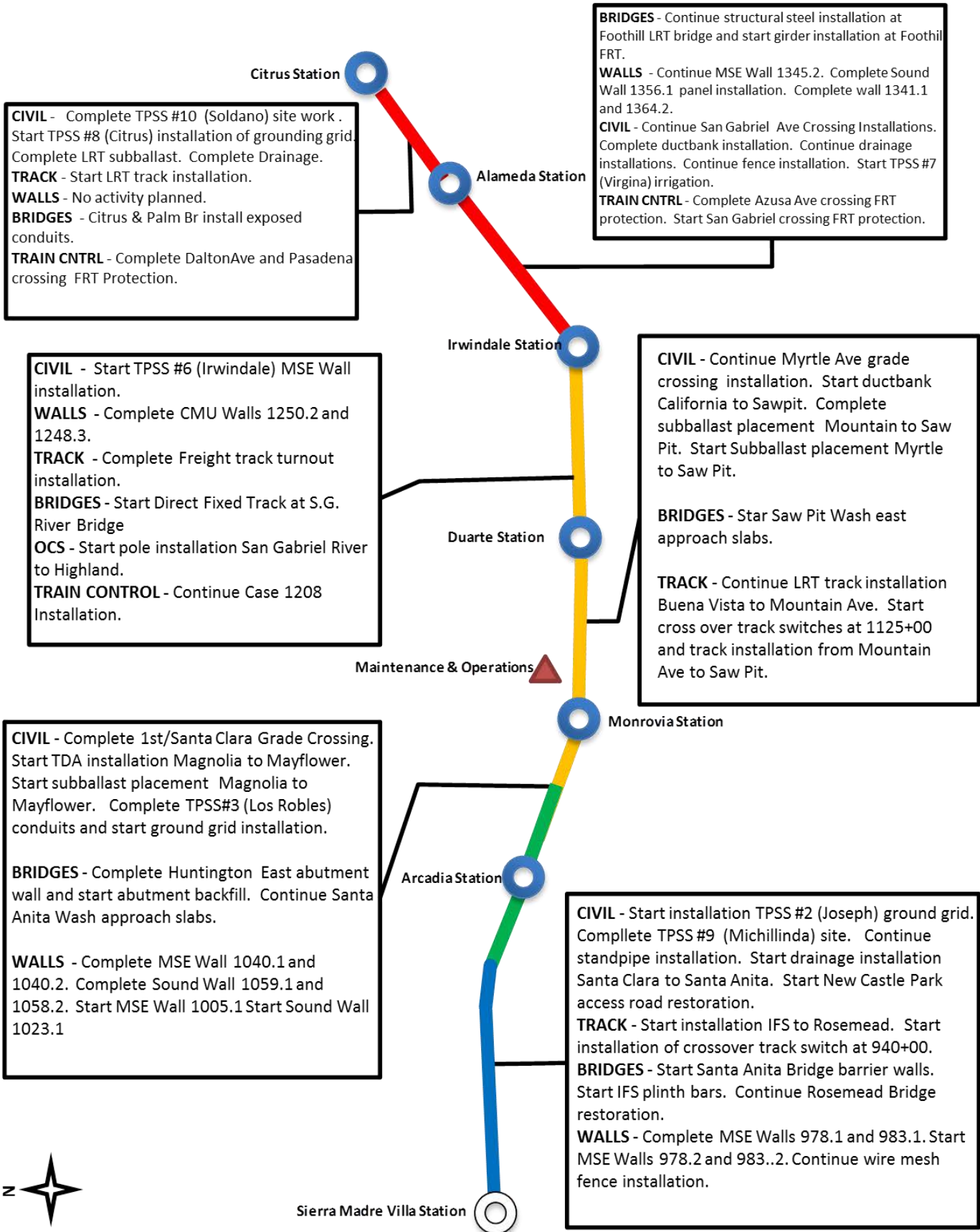
**STATION** - Completed installation of canopy structural steel. Completed installation of underdrain. Started ramp footings and walls  
**PARKING** - Continued installation level 1 columns and shear walls. Started elevator pit excavation and invert.

**Arcadia Station**





## ALIGNMENT CONSTRUCTION PROGRESS NEXT PERIOD





**FACILITY CONSTRUCTION PROGRESS NEXT PERIOD**

**Citrus Ave Station**

**STATION** - Complete installation of platform walls. Start platform deck. Continue installation of conduits.

**PARKING** - No activity planned.

**STATION** - Continue South platform deck. Complete North Platform walls. Start North Platform Deck. Continue North platform conduits.

**PARKING** - No activity planned.

**Alameda Station**

**STATION** - Start platform footings , and continue the installation of grounding & conduits.

**PARKING** - Complete N. Irwindale Phase 3

**Irwindale Station**

**STATION** - No activity planned.

**PARKING** - No activity planned.

**CIVIL** - Start Shamrock 24" waterline. Complete Shamrock 8" waterline. Complete 6" sewer installation.

**WALLS** - Start screen wall foundations.

**TRACK** - Continue Ballast and track installation at North Storage Track and Turnout Switches. Start subballast placement at Southwest yard.

**STRUCTURES** - *M&O Building* continue structural steel installation and complete the installation of 2nd floor metal decking and start concrete deck. Start 3rd floor metal decking. *Car Wash* - Continue foundation slab. *Cleaning Platform* - Start canopy and sanding equipment installations. *Material Storage* - Start structural steel painting.

**OCS** - Continue poles and hardware installation at North Storage track area.

**Maintenance & Operations**

**Duarte Station**

**STATION** - Continue ramp walls and deck at North and South Platforms. Start canopy structural steel installation.

**PARKING** - Start installation level 1 columns and shear walls. Start installation of CMU Ramp Walls. Start level 1 mechanical/electrical . Complete elevator pit invert and start elevator pit walls

**Monrovia Station**

**STATION** - Continue ramp footings and walls.

**PARKING** - Continue installation level 1 columns and shear walls. Start installation of CMU Ramp Walls. Start level 1 mechanical/electrical . Start and complete slab on grade concrete. Start level 2 deck concrete. Complete elevator pit invert and start elevator pit walls.

**Arcadia Station**



## ALIGNMENT CONSTRUCTION IMAGES

Segment 1: Track Work



Segment 2: Santa Anita Bridge -  
Special Barrier Work

Segment 3: East of Buena Vista - Flooding Ballast



**ALIGNMENT CONSTRUCTION IMAGES (CONTINUED)**



Segment 4: Foothill Bridge - Steel Girder Erection

Operations Campus: Progress on Car Cleaning Platform Canopy steel



Operations Campus: 3rd floor Yard Control Room decking complete



Change Management Log

Date: 4/17/2014

Page: 1 of 4

Project: C1135 Alignment - FTC Contract #: C1135

Original Contract Amount:	\$485,867,000				
Approved Change Orders:	\$9,846,259	2.03%	Pending Change Orders:	\$0	0.00%
Current Contract Total:	\$495,713,259		Pending Contract Total:	\$495,713,259	2.03%

Change Orders

Number	Change Management	Title	Initiated Date	Approved Date	Outstanding Days	Time Extension	Amount
<b>EXECUTED Change Orders</b>							
001.00	000.00	Interim NTP	11/3/2011	11/3/2011	0		\$0
002.00	013.00	Colorado Bridge Haz Mat	5/17/2012	5/18/2012	1		\$121,382
002.01	013.01	Colorado Bridge HazMat - Final	9/5/2012	9/7/2012	2		\$13,164
003.00	001.00	Sound Wall Deletion - Duarte Road	7/12/2012	7/18/2012	6		(\$74,707)
004.00	018.00	Revise Block Design - CBD Calc	8/23/2012	8/29/2012	6		\$3,986
004.01	018.01	Revise Block Design - CBD Calc - 2	9/5/2013	9/11/2013	6		\$0
005.00	023.00	Wayside Signal Aspect Revision	9/6/2012	9/7/2012	1		\$26,072
005.01	023.01	Wayside Signal "Call On" Function	10/30/2013	11/1/2013	2		\$75,169
006.00	040.00	Arcadia Frieze, Bench-Artist Design	9/6/2012	9/10/2012	4		\$13,683
006.01	040.01	Arcadia Frieze, Bench-Construction	3/7/2013	3/12/2013	5		\$155,894
007.00	019.02	Soils Testing Abutments & Fdns	9/14/2012	9/18/2012	4		\$44,993
008.00	041.00	Unknown Utilities RFCN 005 006 008	9/14/2012	9/18/2012	4		\$132,450
009.00	038.00	Illuminate City Names @ Stations	9/18/2012	9/24/2012	6		\$184,657
010.00	046.00	SGRB - Lead Based Paint Remediation	9/21/2012	9/24/2012	3		\$244,536
011.00	004.00	Station Architectural Changes	10/11/2012	10/12/2012	1		\$443,950
012.00	003.01	Systems and Testing for Added TPSS	12/13/2012	12/14/2012	1		\$1,443,193
013.00	005.02	IDIQ Comm Contract (Rev 2)	12/14/2012	1/22/2013	39		\$698,259
014.00	060.00	Sewer Encasement Changes in Azusa	12/18/2012	1/24/2013	37		\$141,354
015.00	037.02	M&O - Materials Storage Revisions	12/26/2012	1/15/2013	20		\$62,862
015.01	037.03	M&O Storage Shelving Revisions	9/16/2013	9/19/2013	3		\$20,380
016.00	002.00	Relocation of Access Road to 3M Fac	12/26/2012	1/16/2013	21		\$53,814
017.00	025.00	3 Electrical Casings for ALW	2/27/2013	3/1/2013	2		\$219,033
018.00	073.00	Hazardous Abatement at Bridges	1/15/2013	2/6/2013	22		\$1,081,803
019.00	054.00	City of Hope Conduits	1/11/2013	1/22/2013	11		\$34,313
020.00	059.00	Citrus TPSS Transformer Pad Changes	2/6/2013	2/7/2013	1		\$34,536
021.00	075.00	Demo & Replace Palm Dr. Roadway	2/7/2013	2/14/2013	7		\$90,365
022.00	077.00	M&O Differing Site Conditions; Pt 1	2/13/2013	2/15/2013	2		\$66,360
022.01	093.00	M and O DSC T and M Work Part 2	3/8/2013	3/12/2013	4		\$66,625
022.02	103.00	M and O DSC Part 3	3/27/2013	3/28/2013	1		\$35,211
022.03	115.00	DSC at M and O Part 4	5/3/2013	5/7/2013	4		\$5,706
023.00	089.00	Contaminated Soil Abatement	2/26/2013	2/27/2013	1		\$422,068
024.00	068.00	Monrovia Sound Wall Panel Change	2/26/2013	2/28/2013	2		(\$24,150)
025.00	052.00	Santa Anita Trail Detour	3/8/2013	3/12/2013	4		\$27,691
026.00	070.00	Block Type Change at M&O Building	3/26/2013	3/26/2013	0		\$35,016
027.00	065.00	M&O IT Changes-Duct Banks/Conduits	3/26/2013	3/26/2013	0		\$88,650
027.01	065.01	M&O IT Changes - Power to WAP	9/4/2013	9/6/2013	2		\$73,049
028.00	039.01	Delete Layover Building	4/11/2013	4/12/2013	1		(\$313,832)
029.00	095.00	8in Sanitary Sewer Line- Alameda Av	4/23/2013	4/25/2013	2		\$226,089
029.01	095.01	Alameda Sewer Line Revised Scope	11/22/2013	11/26/2013	4		(\$37,425)
030.00	102.00	M&O-Disconnect Switches, Insulators	4/23/2013	4/25/2013	2		\$67,817
031.00	110.00	Rmv Abandoned Utility Line @ Dalton	4/23/2013	4/25/2013	2		\$1,562
032.00	104.00	Highland Ave Abandoned CMP sleeves	5/1/2013	5/3/2013	2		\$15,005
033.00	114.00	Remove contaminated wood culvert	5/3/2013	5/7/2013	4		\$4,714
034.00	128.00	M&O Backup Power/Generator Changes	5/13/2013	5/21/2013	8		\$121,340
035.00	083.00	M&O Vehicle Sanding System Changes	5/21/2013	5/24/2013	3		\$27,463



Change Management Log

Date: 4/17/2014

Page: 2 of 4

Project: C1135 Alignment - FTC Contract #: C1135

Change Orders

Number	Change Management	Title	Initiated Date	Approved Date	Outstanding Days	Time Extension	Amount
<b>EXECUTED Change Orders</b>							
036.00	006.00	IFS Related Contract Changes	6/7/2013	6/11/2013	4		(\$263,111)
037.00	137.00	CTS Redesign	7/12/2013	7/16/2013	4		\$58,214
038.00	138.00	Segment 4 Safety Manager	7/12/2013	7/16/2013	4		\$157,274
038.01	138.01	Segment 4 Safety manager - Part 2	11/19/2013	11/21/2013	2		\$72,963
038.02	138.02	Segment 4 Safety Manager - Part 3	4/3/2014	4/7/2014	4		\$82,271
039.00	085.00	M&O Drainage System Enhancements	7/19/2013	8/13/2013	25		\$251,579
040.00	067.00	Station Paver Changes	7/23/2013	8/13/2013	21		\$728,340
040.01	067.01	Rebar Changes for Station Pavers	10/28/2013	10/31/2013	3		\$10,586
041.00	112.00	12" Pasadena Waterline Potholes	8/12/2013	8/16/2013	4		\$19,735
042.00	150.00	Demo Abandoned Water Lines @ Dalton	8/12/2013	8/16/2013	4		\$5,937
043.00	007.01	Emer. Backup for Guideway Lighting	8/16/2013	10/1/2013	46		\$359,158
044.00	172.00	Contaminated Wood Culvert Sta. 1202	8/27/2013	8/28/2013	1		\$7,712
045.00	139.00	BLS Changes	8/28/2013	9/4/2013	7		\$110,801
046.00	165.00	Azusa-Alameda Station; 2nd Portal	8/28/2013	9/4/2013	7		\$77,175
047.00	145.00	St. Joseph drainage enhancements	9/4/2013	9/6/2013	2		\$17,592
048.00	149.00	M&O - Lights at NW Corner Park	9/4/2013	9/6/2013	2		\$29,351
049.00	174.00	TPSS #5 Cal-Am Power Conflict	9/4/2013	9/6/2013	2		\$127,260
050.00	171.00	Relocate Access Stair to Foothill	9/4/2013	9/6/2013	2		\$20,276
051.00	173.00	Dalton 8" Water Line Work	9/5/2013	9/12/2013	7		\$35,316
052.00	071.00	Duarte Rd Screen Wall Change	9/5/2013	9/17/2013	12		(\$133,864)
053.00	176.00	Remove Contaminatd Wood-Buena Vista	9/10/2013	9/12/2013	2		\$5,543
054.00	147.00	DECCO Bypass	9/10/2013	9/12/2013	2		\$18,519
055.00	166.00	Foothill Blvd. Water/SD Relocation	9/20/2013	9/20/2013	0		\$127,074
056.00	186.00	Contaminated Wood @ San Gabriel Ave	9/23/2013	9/24/2013	1		\$4,291
057.00	194.00	California/Duarte Water Line Work	10/28/2013	10/31/2013	3		\$220,743
058.00	189.00	Four Utility Changes	10/28/2013	10/31/2013	3		\$14,157
059.00	180.00	Remove/Dispose of ACM E of Highland	10/30/2013	11/1/2013	2		\$29,311
060.00	179.00	CTS Upgrade to OC-192	10/30/2013	11/1/2013	2		\$112,543
061.00	213.00	Irwindale On-ramp Stockpile	11/8/2013	11/21/2013	13		\$200,185
062.00	053.00	Delete Totten Tubes Scope of Work	11/8/2013	11/21/2013	13		(\$143,801)
063.00	146.00	Home Depot Striping and Signing	11/15/2013	11/21/2013	6		\$21,003
064.00	204.00	Unknown Duct Bank @ San Gabriel Ave	11/15/2013	11/21/2013	6		\$1,265
065.00	140.00	M&O-Overhead Work Platform Changes	12/5/2013	12/16/2013	11		\$317,656
066.00	217.00	Buried SD & Headwall, STA 1306+50	12/6/2013	12/17/2013	11		\$1,020
067.00	219.00	Contaminated Soil, Monrovia Station	12/12/2013	12/17/2013	5		\$17,503
068.00	220.00	DSC at Sawpit Wash Abutments	12/12/2013	12/17/2013	5		\$12,668
069.00	188.00	Costco Emergency Gate-Path to POS	1/21/2014	1/22/2014	1		\$19,882
070.00	214.00	M&O - Generator Load Bank	1/21/2014	1/22/2014	1		\$38,092
071.00	224.00	Alameda South Water Line Tie-in	1/30/2014	1/31/2014	1		\$6,330
072.00	202.00	Aesthetic Lighting Provisions-SGRB	2/3/2014	2/4/2014	1		\$27,055
073.00	160.00	Move Mountain Interlocking Bungalow	2/11/2014	2/13/2014	2		\$68,596
074.00	200.00	M&O Parts Carousel Warranty & PM	2/11/2014	2/13/2014	2		\$68,906
075.00	235.00	Remove Contaminated Wood Ties	2/14/2014	2/18/2014	4		\$4,571
076.00	234.00	Accelerate Work at California Ave	2/14/2014	2/18/2014	4		\$5,663
077.00	247.00	Line Stop in California	2/18/2014	2/20/2014	2		\$14,524
078.00	201.00	Added Sound Wall, SW of IFS	2/27/2014	2/28/2014	1		\$18,201
079.00	238.00	M&O-MOW Canopy Structural Eval	2/27/2014	2/28/2014	1		\$7,147
080.00	232.00	Car Moving Tractor-Coupler Upgrade	2/27/2014	2/28/2014	1		\$177,145
081.00	242.00	Car Moving Tractor Options/Features	2/27/2014	2/28/2014	1		\$69,099
082.00	091.00	Rockvale Water Line Mitigation	3/4/2014	3/5/2014	1		\$163,750



Change Management Log

Project: C1135 Alignment - FTC Contract #: C1135

Change Orders

Number	Change Management	Title	Initiated Date	Approved Date	Outstanding Days	Time Extension	Amount
<b>EXECUTED Change Orders</b>							
082.01	091.01	Rockvale Water Line-EIC credit	4/11/2014	4/14/2014	3		(\$5,391)
083.00	251.00	Cut and Move Rail to Segment 1	3/4/2014	3/5/2014	1		\$249,934
084.00	218.00	Delete Equipment at ROC	3/26/2014	3/27/2014	1		(\$91,708)
085.00	239.00	Install Sound Wall Door @ STA. 1169	3/26/2014	3/27/2014	1		\$12,737
086.00	250.00	Change Top Row of Block Wall 1124.1	3/26/2014	3/27/2014	1		\$3,688
087.00	229.00	Irwindale TPSS-Adjust Eqpt. Layout	4/3/2014	4/7/2014	4		\$17,878
088.00	262.00	Provisional Sum Adjustment	4/3/2014	4/7/2014	4		\$0
089.00	261.00	Longer DF Bolts - SGRB	4/3/2014	4/7/2014	4		\$17,331
090.00	169.02	M&O Trammng Table Changes (rev. 2)	4/11/2014	4/14/2014	3		\$54,083
091.00	181.00	Alameda Utility Changes	4/11/2014	4/14/2014	3		(\$9,599)
<b>Subtotal:</b>							\$9,846,259
<b>Subtotal:</b>							\$9,846,259
<b>Total:</b>							\$9,846,259

Open PCOs

PCO Number	Title
<b>OPEN</b>	
022.02	M&O IT Changes - Remaining Work
027.01	M&O / 3M Fence Revisions (rev 1)
029.00	Del. Irwindale/Gladstone Mitigation
046.00	1st/Santa Clara Grade X-ing Changes
047.00	M&O Body Shop Changes
050.00	M&O Car Wash Betterments
053.01	Irwindale Ramp Changes (Rev 1)
059.00	Mayflower Driveway/Wall Credit
063.00	M&O-Volume Control for PA Speakers
065.00	Azusa-Citrus Ped Crossing Operation
066.00	Red Signal Violation Indication
068.01	M&O - MOW Canopy Solar
070.00	Irwindale Security Kiosk Provisions
071.00	Remove Stem Wall along Duarte Rd.
072.00	Drainage East of Pasadena Ave.
073.00	Virginia TPSS Access Road
074.00	Monrovia Interlocking LCP Changes
075.00	Comm. Changes Parking Structures
076.00	M&O Tactile Guidance Changes
077.00	TES Load Flow Simulation
078.00	DVR Changes

Open RFCs

RFC Number	Title
<b>OPEN</b>	
022.00	MandO Facility Train Control and Si
041.00	M and O Fire Water Tank CSP
068.00	Business Center TPSS Crane Changes
072.00	Asbestos Pipe at Duarte and Myrtle

Open RFC Notices

Number	Title
037.00	DSC at Santa Anita Wash Abutment 1



## Change Management Log

Date: 4/17/2014

Page: 4 of 4

Project: C1135 Alignment - FTC Contract #: C1135

### Open RFC Notices

Number	Title
044.00	DSC Utility at Azusa Avenue
057.00	Rmvl Contmtd Wd Mtrls Stanta Anita
058.00	Removal of IR 0271 Abandoned Utilit
067.00	Unknown Utility at Huntington Bridg



**Description:** Intermodal Parking Facilities & Enhancements **Status:** March 15, 2014

**Contract No.:** C1150

**Contractor:** Webcor Builders

**Progress Completed This Period**

**Design**

- Submit AFC Design - Arcadia Enhancements
- Re-Submit 100% Design - Azusa-Citrus Enhancements
- Re-Submit 100% Design - Azusa-Citrus Parking Structure
- Re-Submit 100% Design - Irwindale Site Prep
- Re-Submit 100% Calculations - Azusa-Citrus Parking Struc.
- Re-Submit 100% Calculations - Irwindale Parking Structrue
- Submit - Tree Survey Irwindale Site

**Activities Planned Next Period**

**Design**

- Submit AFC Design - Irwindale Site Prep
- Submit AFC Design - Monrovia Parking Structure
- Submit AFC Design - Azusa-Citrus Enhancements
- Submit AFC Design - Azusa-Citrus Parking Structure
- Submit AFC Design - Azusa-Citrus Site Prep

**Areas of Concern**

- **IRWINDALE PARKING STRUCTURE DESIGN** - The Authority has issued the Design-Build Contractor a Potential Change Order to revise the location of the Irwindale Parking Structure from the current location identified in the 85% design submittal. The revised design will require the parking structure to be moved in order to avoid a utility conflict with the existing SCE distribution line. The redesign effort will impact the completion of the AFC design and potentially impact the Substantial Completion milestone.

**Areas of Concern (Continued)**

-



**Description:** Intermodal Parking Facilities & Enhancements **Status:** March 15, 2014  
**Contract No.:** C1150 **Contractor:** Webcor Builders

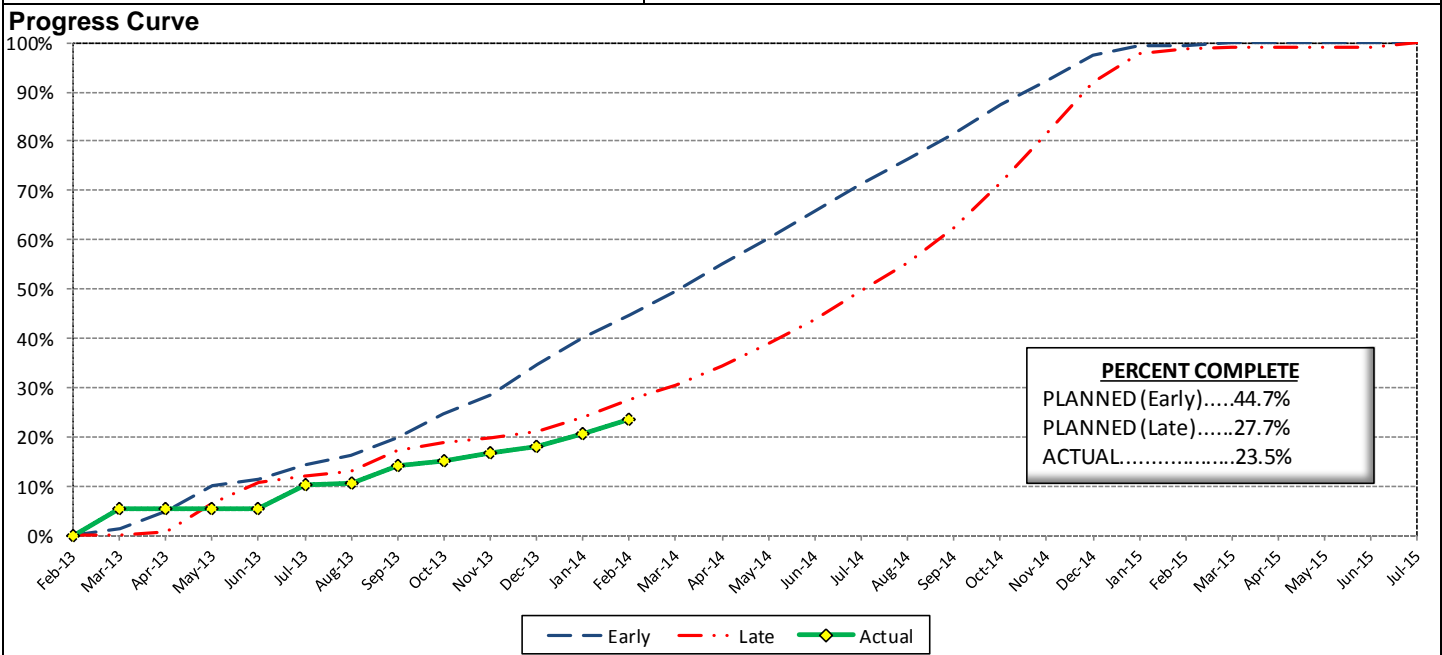
**Cost Summary:**

	Million(s)
<b>CONTRACT</b>	
Contract Award Value:	48.8
Executed Change Orders:	0.3
Current Contract Value:	49.0
Potential Change Orders:	0.2
Current Forecast:	49.2
Earned Value/Actual Cost	11.4
<b>AUTHORIZATION FOR EXPENDITURE</b>	
Budget	50.3
Commitment	50.3
Balance	1.0

**Cost Assessment:**

The current cost forecast is \$49.2 Million. The forecast increased \$100,000 from the previous period. The increase is due to PCO 015 - *Monrovia Canopy & Color Betterment*, and RFC 004 - *Irwindale Intersection Water Line*. The current forecast is within the authorized budget.

The Design-Build Contractor is trending beyond the late curve, which is due to the progress of the *Irwindale Parking Structure*, and *Azusa-Citrus Parking Structure*, AFC designs. In addition, the Design-Build Contractor has not submitted a schedule of values for Contract Document Requirement List (CDRL) bid items, which is also having an impact on progress reporting.



**Schedule Summary:**

Contract Award:	02/27/13
Interim Notice to Proceed (INTP) :	03/20/13
Original Contract Duration:	845 Calendar Days
Current Contract Duration:	845 Calendar Days
Elapsed Time from NTP:	360 Calendar Days

**Contract Milestones**

Milestones	Description	Original Contract	Current Contract	Forecast	Variance
1	Substantial Completion	03/15/15	03/15/15	06/15/15	(92)
2	Punchlist Complete	05/29/15	05/29/15	08/29/15	(92)
3	Final Completion	07/13/15	07/13/15	10/13/15	(92)
4	TPSS Work	03/01/14	03/01/14	03/17/14	(16)

**Schedule Assessment:**

The Design-Build Contractor remains behind schedule due to the re-design of the Irwindale Parking facility. The structure footprint was moved to avoid a conflict with the existing Southern California Edison utility line. The re-design will impact the start of the Irwindale site preparation work, which includes the construction of the soil nail wall and MSE wall. Upon completion of the walls, the Design-Build Contractor will start the parking structure construction. At this time, there is a potential impact of 92 days to the Substantial Completion milestone.

The Design-Build Contractor is currently behind schedule for completing the TPSS site preparation at Michillinda and Soldano by March 1, 2014.

## PARKING FACILITY CONSTRUCTION IMAGES

Arcadia Parking Structure Site Overview



Monrovia Parking Structure Site Overview

Irwindale Intersection Work



## PARKING FACILITY CONSTRUCTION IMAGES

Azusa-Citrus Parking Structure Site Prep



Completed Soldano TPSS

Completed Michillinda TPSS





Change Management Log

Date: 4/17/2014

Page: 1 of 2

Project: C1150 Parking - Webcor Contract #: C1150

Original Contract Amount:	\$48,750,000				
Approved Change Orders:	\$356,733	0.73%	Pending Change Orders:	\$0	0.00%
Current Contract Total:	\$49,106,733		Pending Contract Total:	\$49,106,733	0.73%

Change Orders

Number	Change Management	Title	Initiated Date	Approved Date	Outstanding Days	Time Extension	Amount
<b>EXECUTED Change Orders</b>							
001.00	001.00	Monrovia Parking Alternative Layout	6/25/2013	7/11/2013	16		\$21,382
001.01	001.01	Monrovia Alternative - Cancellation	9/17/2013	10/7/2013	20		(\$12,006)
002.00	003.00	Clock Tower Procurement	7/3/2013	7/11/2013	8		\$107,246
003.00	002.00	Relocate Elevator @ Azusa-Citrus PF	12/18/2013	1/8/2014	21		\$159,899
005.00	018.00	Monrovia Demo Unforeseen Conditions	3/18/2014	3/26/2014	8		\$17,013
006.00	010.00	Arcadia Transit Plaza Betterments	3/14/2014	3/26/2014	12		\$35,466
007.00	009.01	Irwindale Intersection Betterments	3/25/2014	3/26/2014	1		\$19,985
008.00	017.00	Irwindale Intersection Water Line	3/25/2014	4/14/2014	20		\$7,748
						<b>Subtotal:</b>	\$356,733
						<b>Subtotal:</b>	\$356,733
<b>PENDING Change Orders</b>							
004.00	013.00	Irwindale Structure Relocation	1/23/2014		84	90	\$0
						<b>Subtotal:</b>	\$0
						<b>Subtotal:</b>	\$0
						<b>Total:</b>	\$356,733

Open PCOs

PCO Number	Title
<b>OPEN</b>	
004.00	TPSS Grounding Grid Modifications
006.00	St. Joseph Drainage Enhancements
008.00	Azusa-Citrus Plaza Pavers
009.00	Irwindale Intersection LED Upgrade
011.00	Soldano TPSS Added ROW Fence
012.00	Additional Conduit Provisions
013.00	Primrose Avenue cul-de-sac Deletion
014.00	Delete Azusa-Alameda Enhancements
015.00	Monrovia Canopy & Color Betterments

Open RFC Notices

Number	Title
001.00	Arcadia Unforeseen Items
003.00	Michillinda unforeseen items
005.00	Irwindale CCTV Power Pole
006.00	Michillinda Demo of DB2 Conduit



## Change Management Log

Date: 4/17/2014

Page: 2 of 2

**Project: C1150 Parking - Webcor Contract #: C1150**

### Open RFC Notices

Number	Title
007.00	Added PME Switch & Spare Conduits
008.00	SCE Power Feed to DB2 TPSS at Arcad



## **AZUSA TO MONTCLAIR SEGMENT**

### **ACTIVITIES COMPLETED THIS PERIOD**

Authority staff issued the Request for Proposals (RFP) for the advanced conceptual engineering support and NEPA consultant. Staff is currently developing the First Addendum to the Phase 2B FEIR that is studying an LRT separation at Garey Avenue in the City of Pomona. The Authority received four proposals from consultants in response to the RFP for the advanced engineering support and NEPA consultation, and initiated the review and selection process for award in April 2014.

### **KEY FUTURE ACTIVITIES**

Staff will present the First Addendum to the Phase 2B FEIR for Board consideration in the upcoming Board meeting.

### **Federal Transit Administration (FTA)**

The Metro Board of Directors excluded the Gold Line from seeking federal New Starts funding. The Authority will work together with Metro along with the Congressional delegation to seek funding to construct the extension following completion of the environmental review.



## **ONTARIO AIRPORT SEGMENT**

### **ACTIVITIES COMPLETED THIS PERIOD**

Staff continued to pursue the legislative authority required to conduct the Alternatives Analysis for the Ontario Airport Segment. The Authority is working with legislators, the San Bernardino Associated Governments (SANBAG), and other agencies to revise the Authority's statute.

### **KEY FUTURE ACTIVITIES**

Authority staff will continue to work with legislators and various stakeholders to obtain the necessary statutory authority to conduct work on this Segment.



## PHASE II FOOTHILL EXTENSION FINANCIAL STATUS

### Project Operating Budget Summary in Millions of Dollars

**March 31, 2014**

	( a )	( b )	(c=a-b)	( d )
<b>FINANCIAL PLAN</b>	<b>Current Budget</b>	<b>Funding Committed to Project</b>	<b>Uncommitted Funds</b>	<b>Revenues Received</b>
SCAG	1.0	0.9	0.1	0.9
Interest Income	2.0	2.0	-	2.0
Bridge Replacement	13.9	13.9	-	13.9
Phase I Carryover	4.0	4.0	-	4.0
Maintenance and Operations Facility	-	-	-	-
Cities	11.0	-	11.0	-
Measure R - Pasadena to Azusa	810.5	777.0	33.5	331.8
Measure R - Azusa to Montclair	-	-	-	-
SANBAG	55.2	1.5	53.7	1.5
Federal TCSP	2.9	2.9	-	2.5
Federal Bus Intermodal Plan	9.0	9.0	-	3.0
Federal New Starts 2004 MTA Passthrough	4.0	4.0	-	4.0
Federal New Starts 2005 MTA Passthrough	0.5	0.5	-	0.5
Federal New Starts 2006 Corridor Study	2.5	2.5	-	2.4
Federal/Other	802.5	-	802.5	-
<b>Total Revenues</b>	<b>1,719.0</b>	<b>818.2</b>	<b>900.8</b>	<b>366.5</b>
	( a )	( b )	( c )	(d=a-b)
	<b>Current Budget</b>	<b>Current Obligation</b>	<b>Current Expenditures</b>	<b>Current Available Balance</b>
<b>EXPENSES</b>				
Program Management and Administration	107.9	86.1	72.8	21.8
Master Cooperative Agreements	12.0	3.3	2.8	8.7
Real Estate including ROW Acq	21.0	14.6	14.6	6.4
Special Programs	0.3	-	-	0.3
Procurement/Vehicles	60.0	-	-	60.0
Maintenance and Operations Facility Land	22.0	22.0	22.0	-
Construction - IFS	19.8	19.8	19.8	-
Construction - Pasadena to Azusa segment	328.9	328.9	218.9	-
Construction - Azusa to Montclair segment	950.0	-	-	950.0
Construction - M&O	46.0	44.0	20.6	2.0
Construction - Parking Structures	44.2	44.2	13.0	-
MTA Project Costs	64.0	64.0	14.3	-
Contingency	27.4	-	-	27.4
Project Reserve	15.5	-	-	15.5
<b>Total Project</b>	<b>1,719.0</b>	<b>626.9</b>	<b>398.8</b>	<b>1,092.1</b>