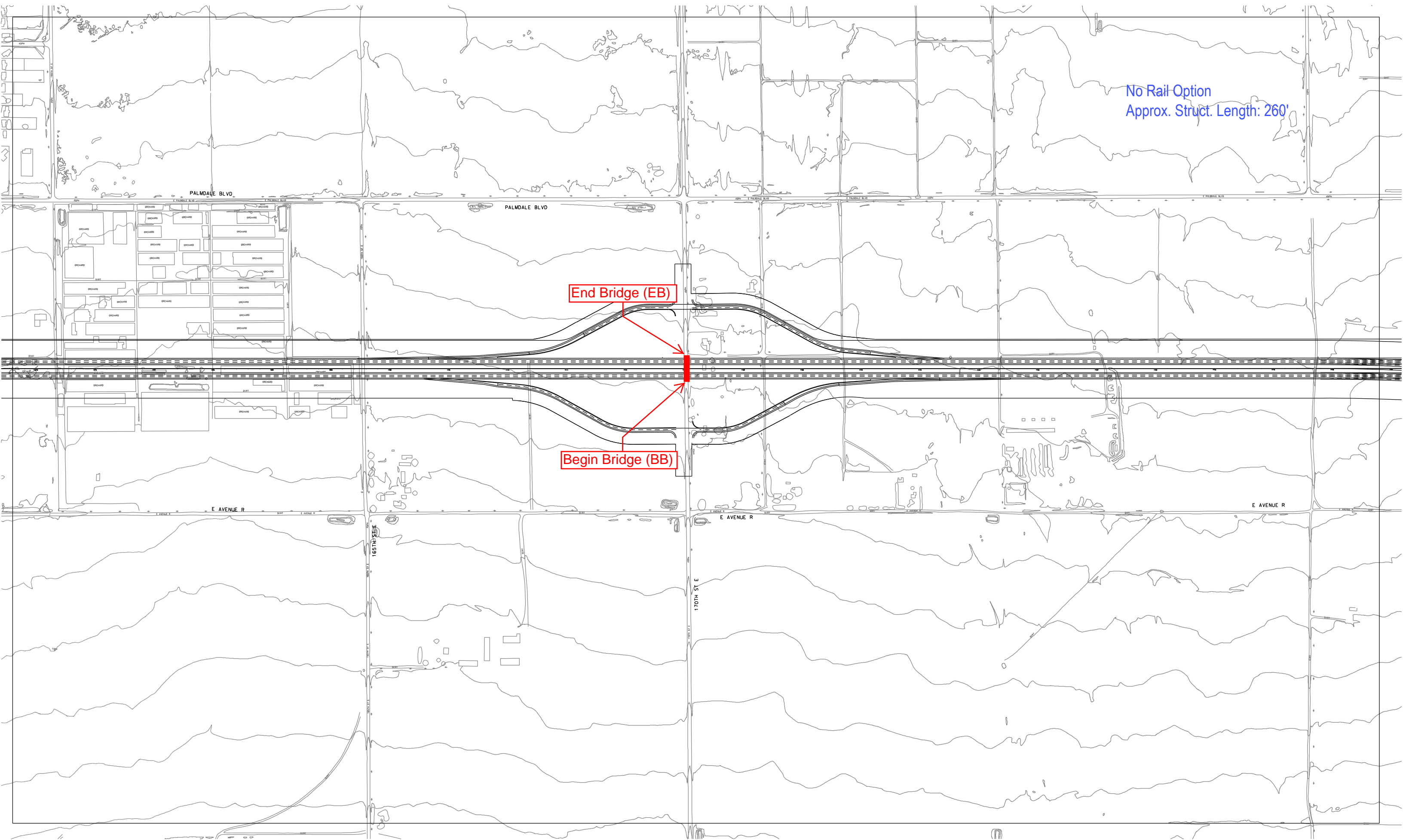


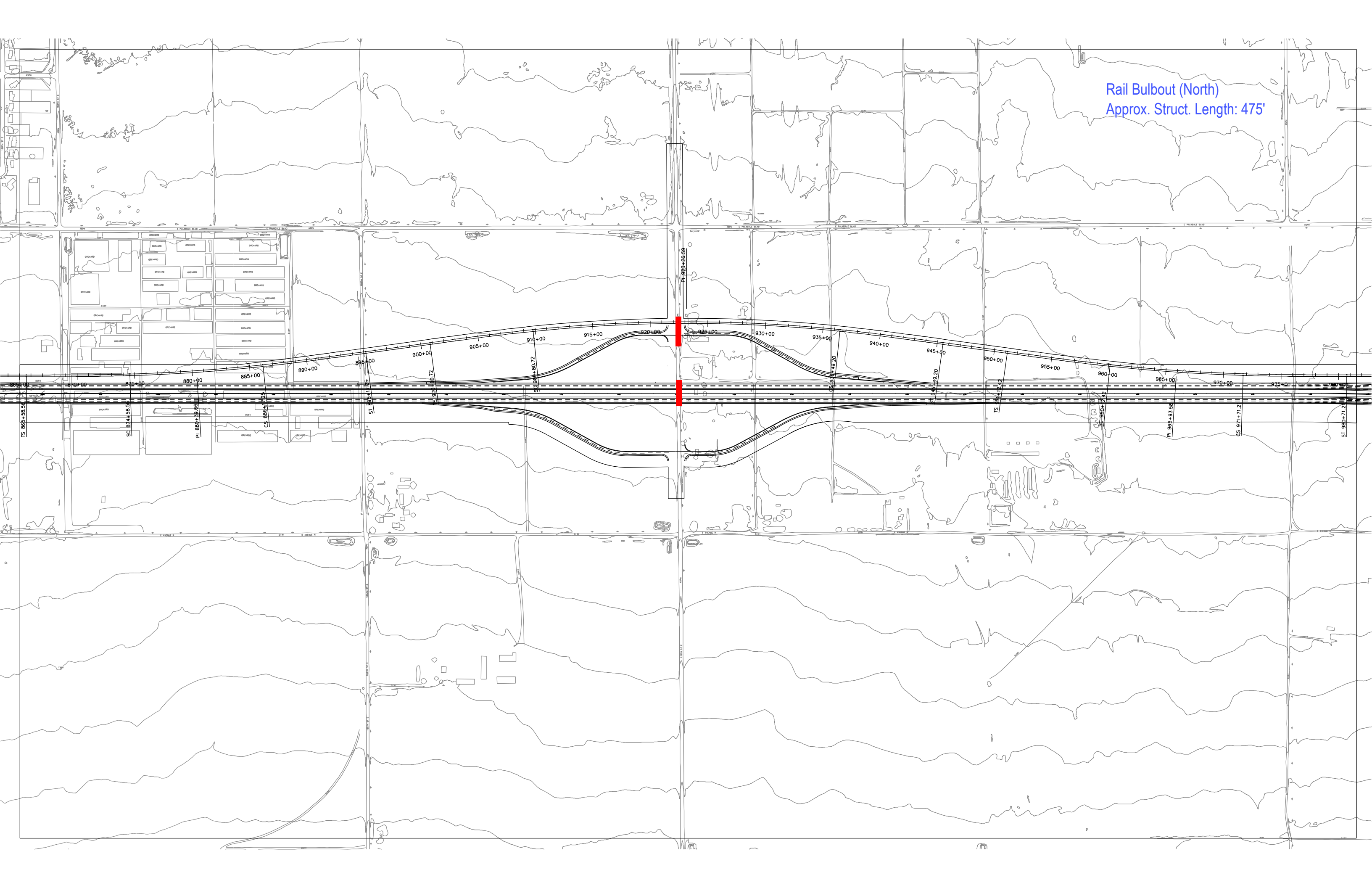
No Rail Option
Approx. Struct. Length: 260'

End Bridge (EB)

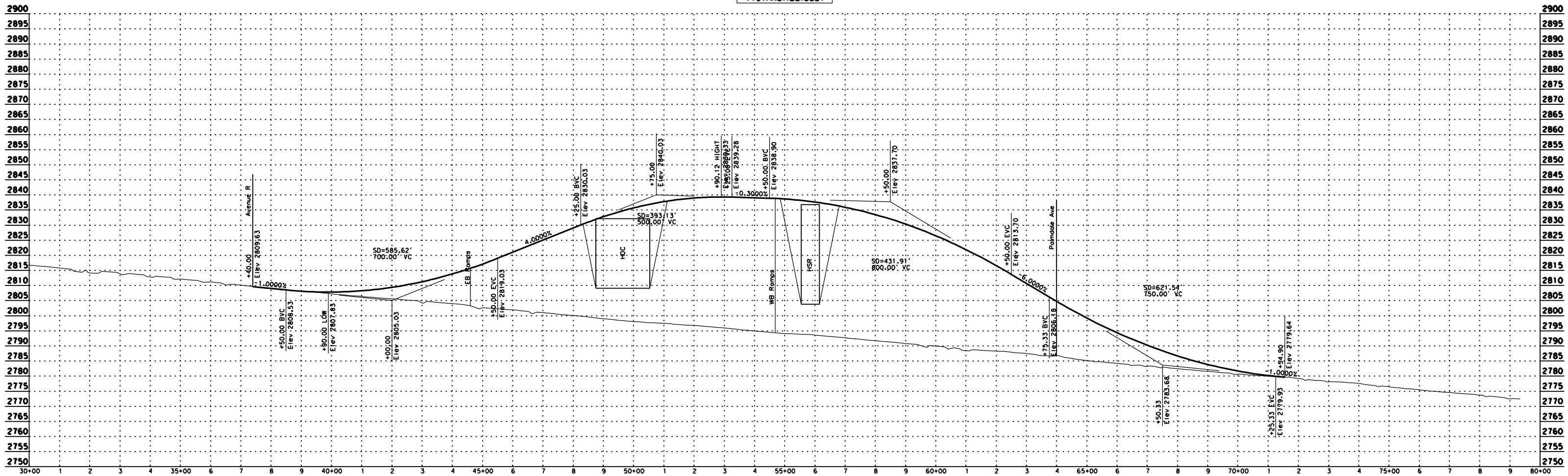
Begin Bridge (BB)



Rail Bulbout (North)
Approx. Struct. Length: 475'



170th Rd I/Bulbout



Rail in Median
Approx. Struct. Length: 404'

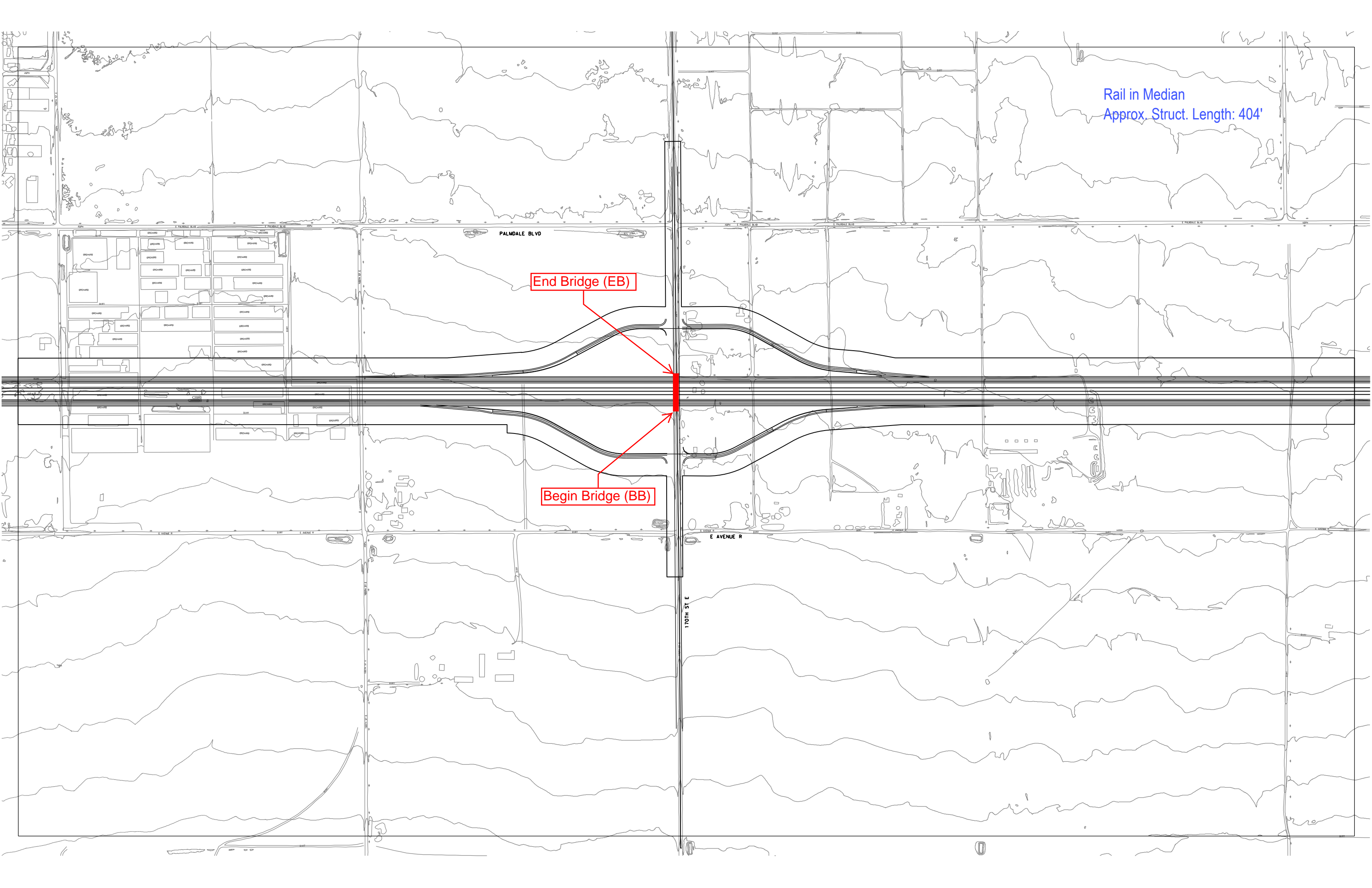
End Bridge (EB)

Begin Bridge (BB)

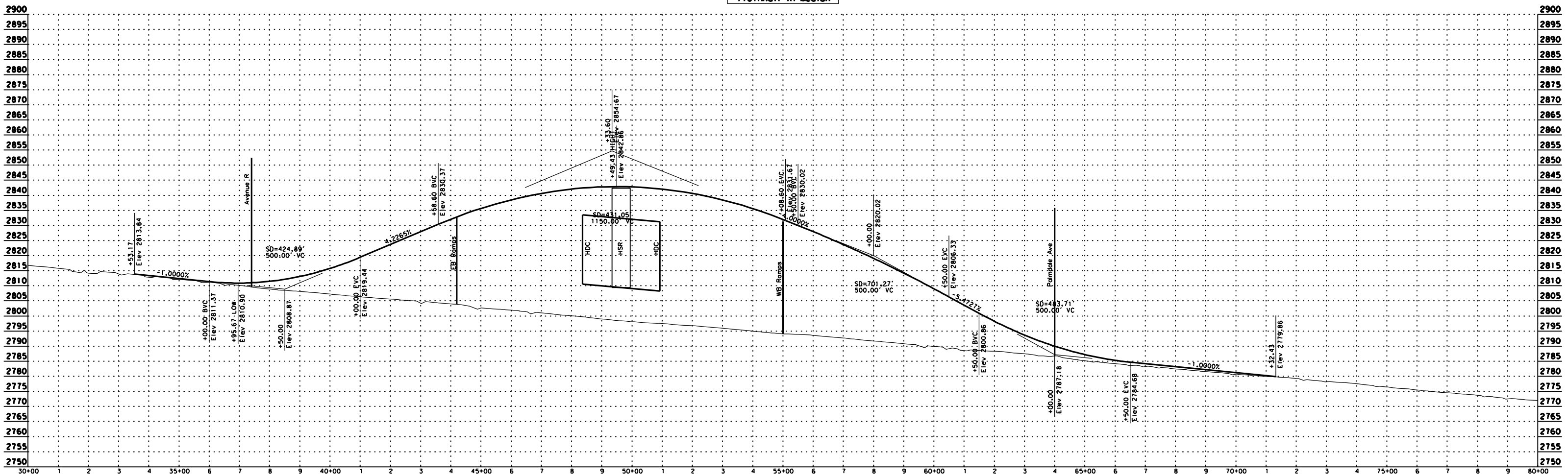
PALMDALE BLVD

E AVENUE R

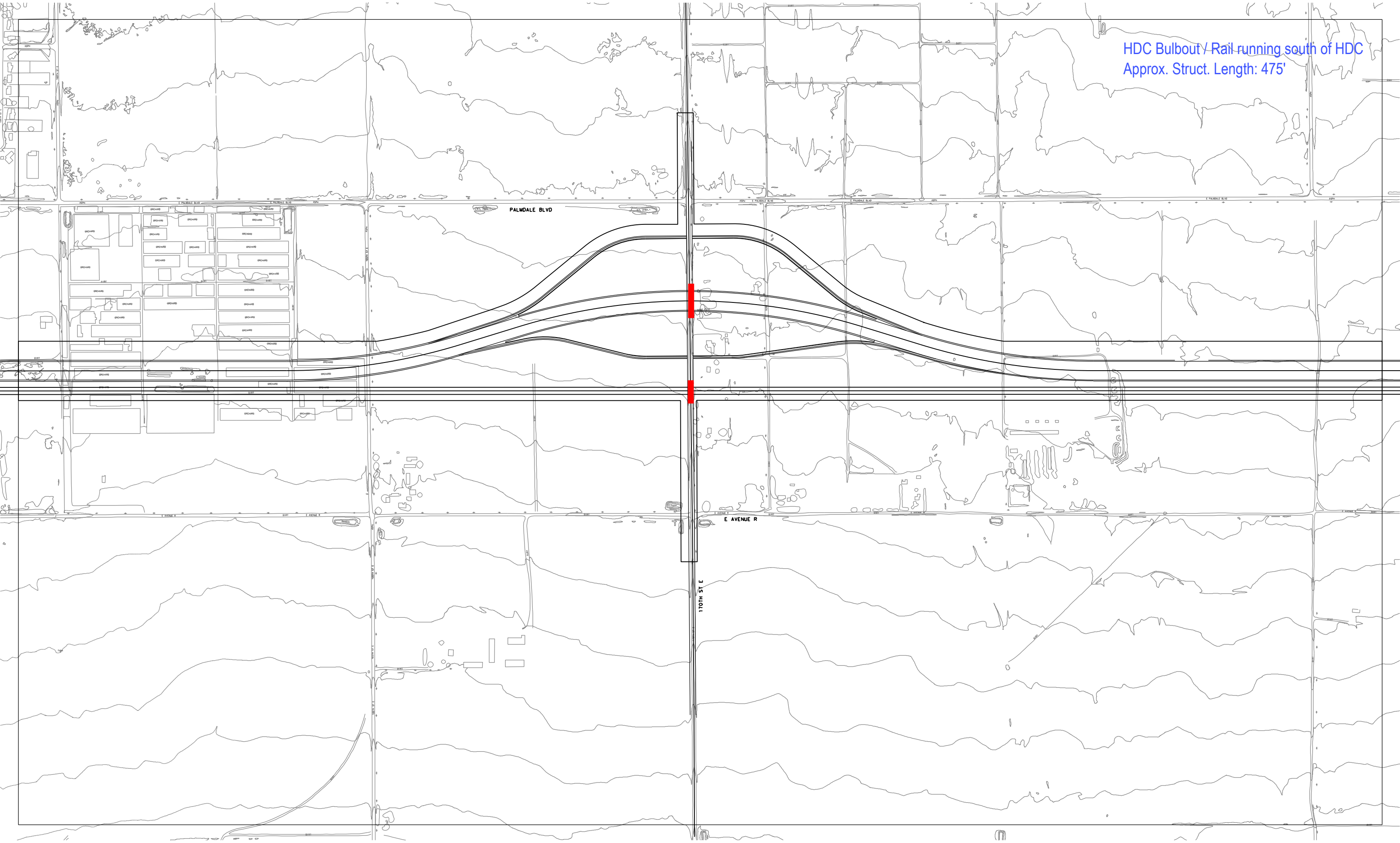
170TH ST E



170thRail-in-Median



HDC Bulbout / Rail running south of HDC
Approx. Struct. Length: 475'



170thRailSouthOfHDC

