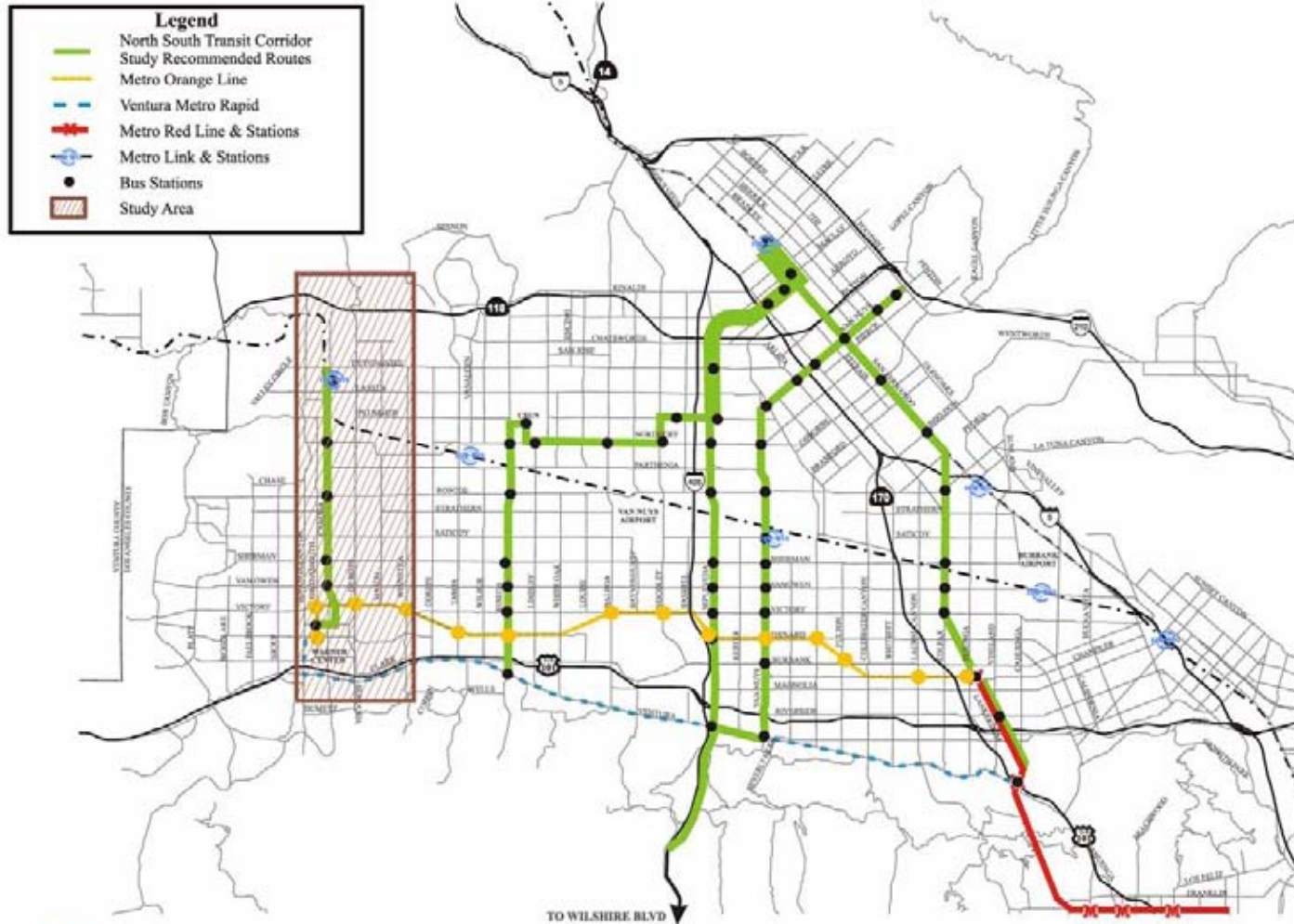


# Canoga Extension of the Metro Orange Line

## Community Briefing



# Study Area



Source: FFERIS

# Canoga Extension of the Metro Orange Line Locally Preferred Alternative (LPA)



# Project Characteristics

- Exclusive Busway Adjacent to Canoga Avenue on the Metro Owned Right-of-Way
- Four New Metro Orange Line Stations
- Grade-Separations over:
  1. Los Angeles River
  2. Active Railroad Tracks/Lassen Street
- Transportation Enhancements and a Bikeway similar to those on the Existing Metro Orange Line

# Canoga Extension of the Metro Orange Line

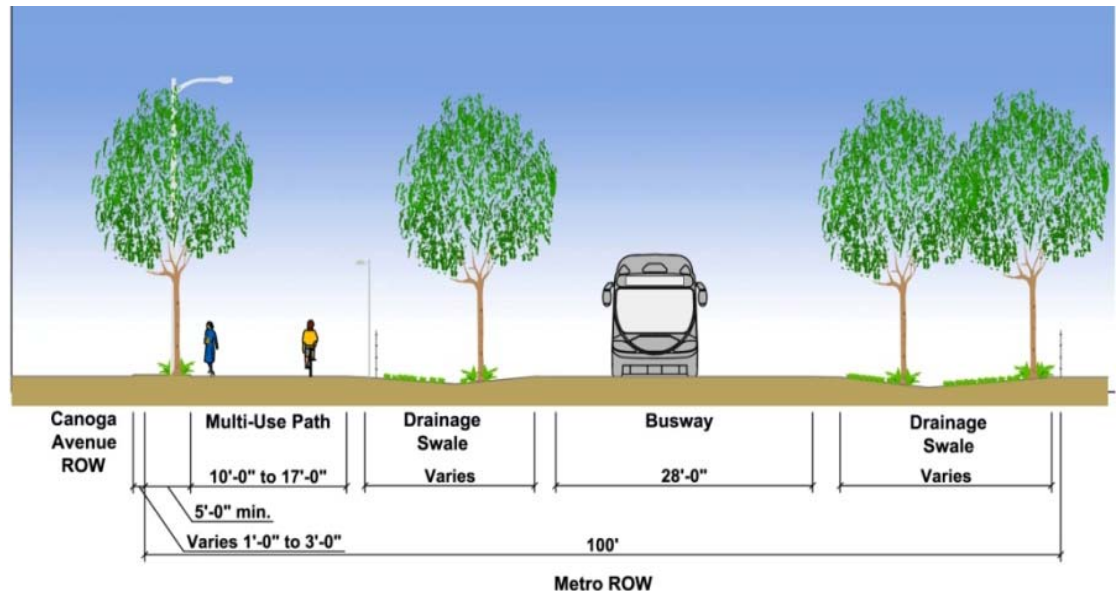
Distance – Canoga Park and Ride to Chatsworth Metrolink Station	Four miles
Travel Time	12 minutes
Average Speed	21 MPH
Project includes four new stations:	1-Sherman Way (park & ride with approximately 200 spaces) 2-Roscoe Blvd 3-Nordhoff St 4-Chatsworth Metrolink Station (park & ride to be reconfigured to accommodate 604 cars)
Right-of-Way Width	Avg. 100 feet - 40' narrowest, 275' widest



# Typical Cross Section

## Exclusive Busway

- Separation from Automobile Traffic
- Includes a Bikeway/Pedestrian Path
- Includes Landscaping & Irrigation

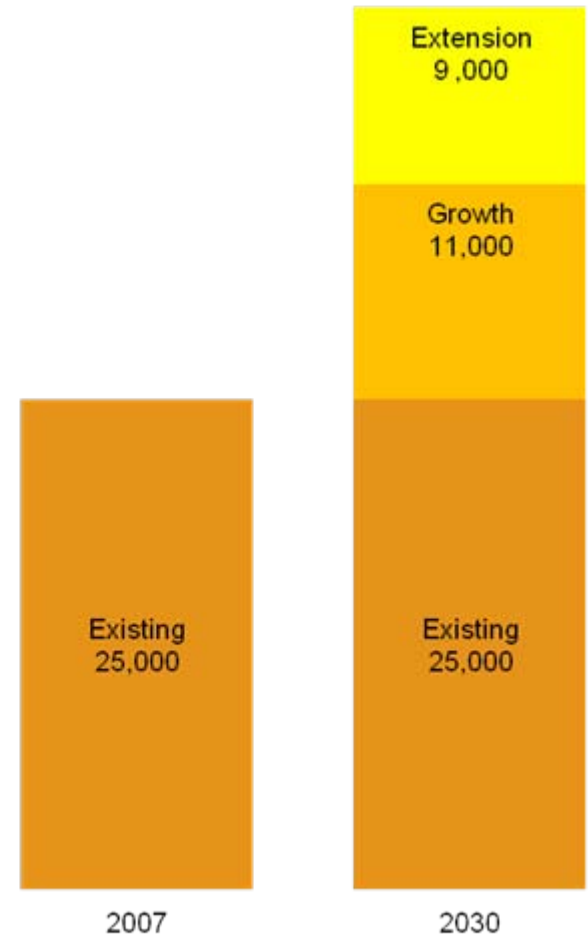


# Ridership

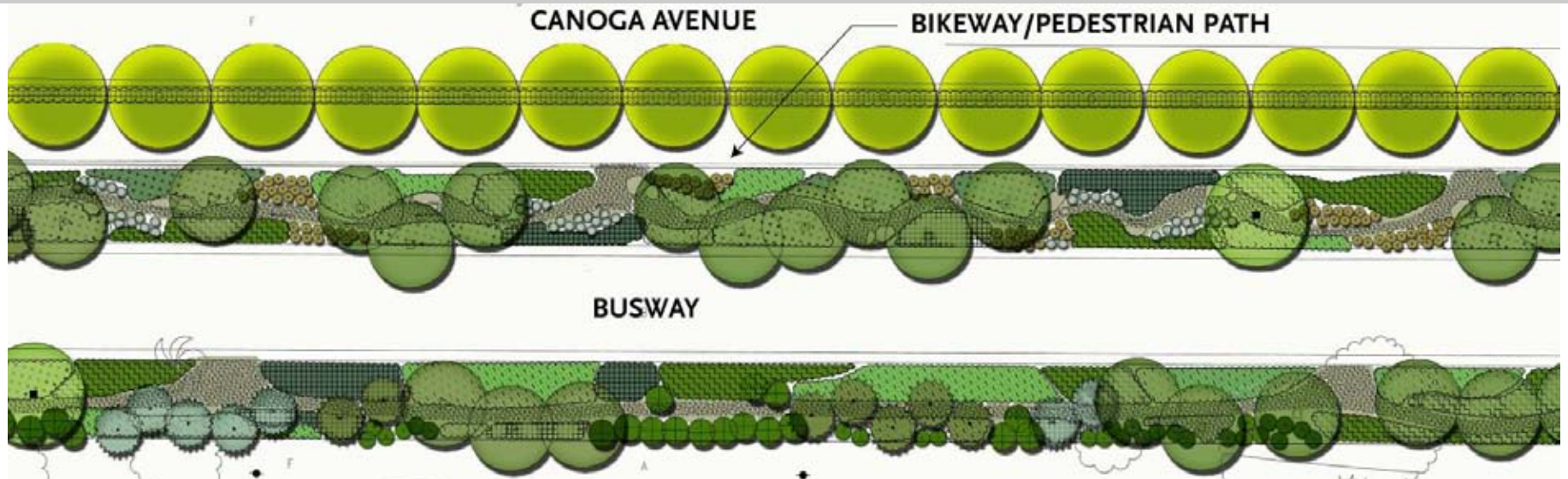
## Overall Metro Orange Line (MOL) Ridership

### Average Daily Station Boardings - 2030

• Chatsworth	2,247
• Nordhoff	613
• Roscoe	2,933
• Sherman Way	<u>2,407</u>
<b>Total New Station Boardings</b>	<b>8,200</b>
• Canoga (northbound)	<u>823</u>
<b>Total New Boardings</b>	<b>9,023</b>



# Typical Corridor Landscape Concept



- Street Trees Along Canoga Avenue
- Trees and Groundcover in a Naturalistic Pattern on Both Sides of Busway
- Vines on Privacy Walls and other Landscaping to Minimize Graffiti
- California Native, Adaptive Exotics, and Mix of Similar Low Water Usage Plants

# 60' Metro Liner Bus



- Low Floor
- Low Noise Vehicle
- 57 Seats
- Compressed Natural Gas (CNG) i.e. Clean Fuel

# Canoga Station



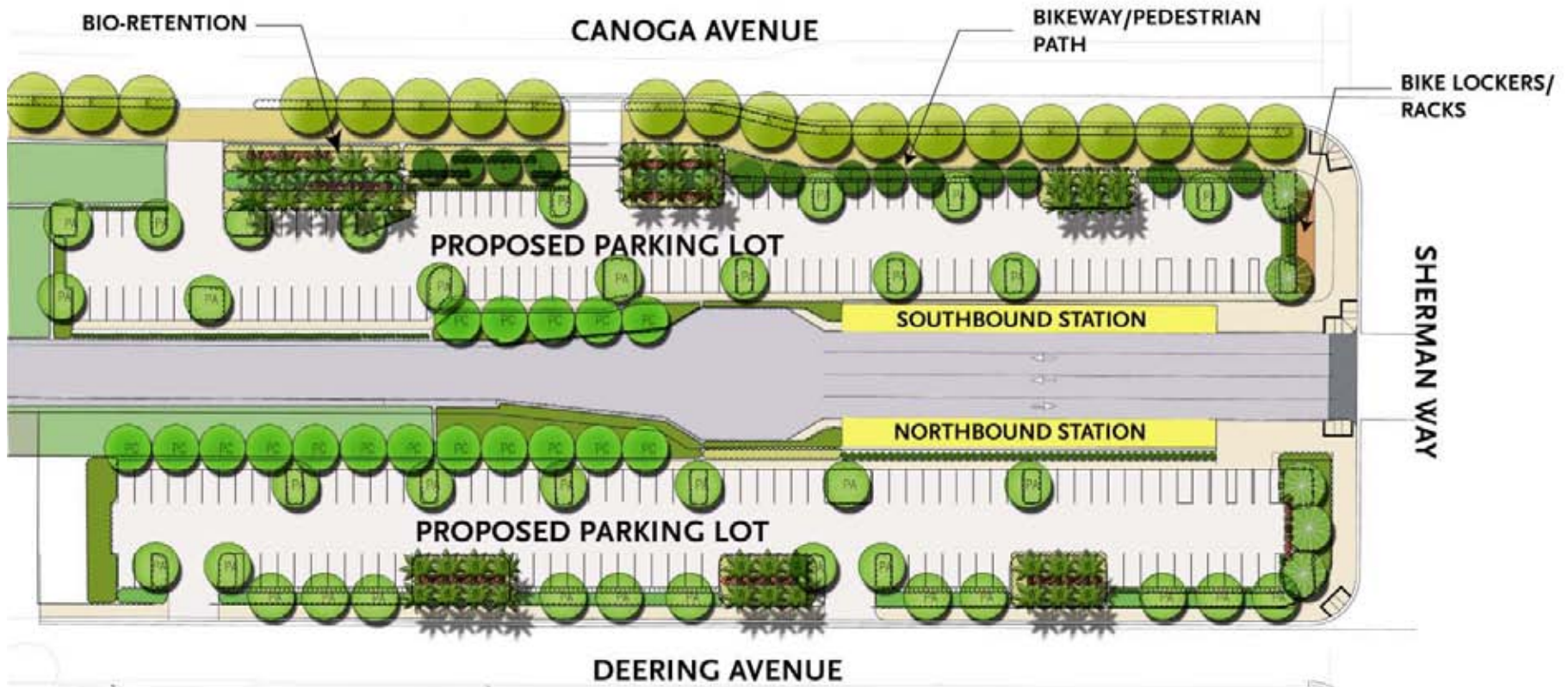
# Bridge Over the Los Angeles River



- Busway Bridge will Complement Existing Bridge, but not Duplicate
- Bridge will be for Busway and Bike/Pedestrian Traffic
- Approximately 25 feet Between two Bridges



# Sherman Way Station



- To Include an Approximate 200 Space Park-and-Ride Lot

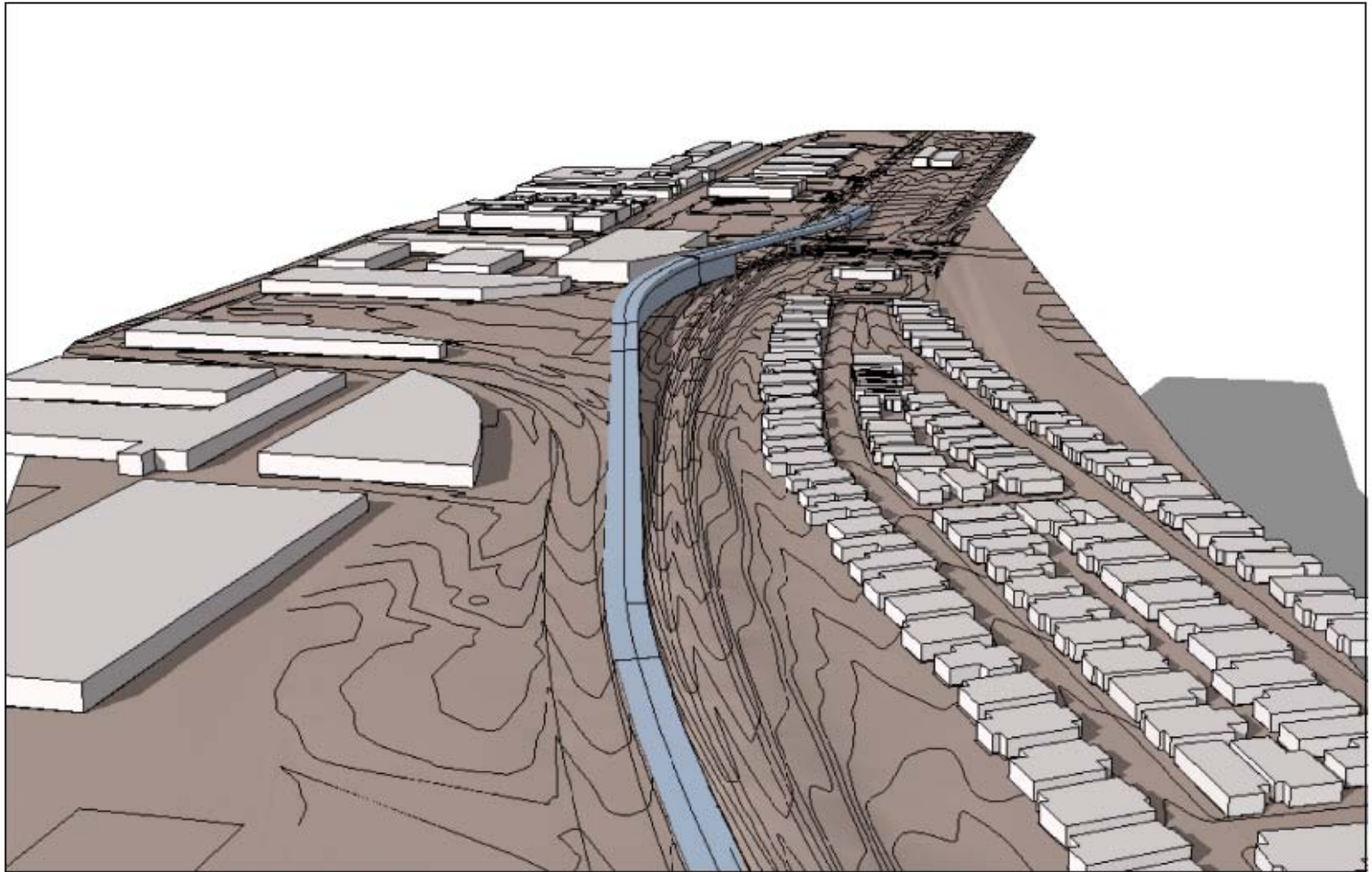
# Roscoe Station



# Nordhoff Station



# Aerial View of Lassen Street Overcrossing



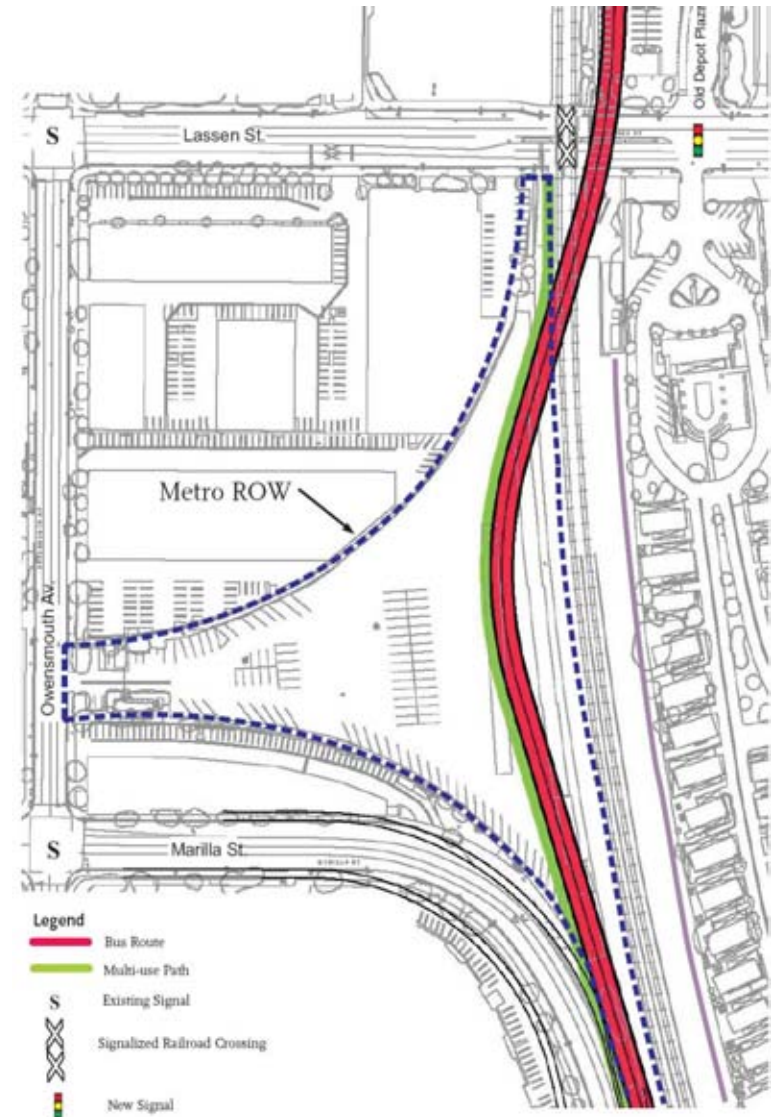
# Overcrossing at Lassen Street



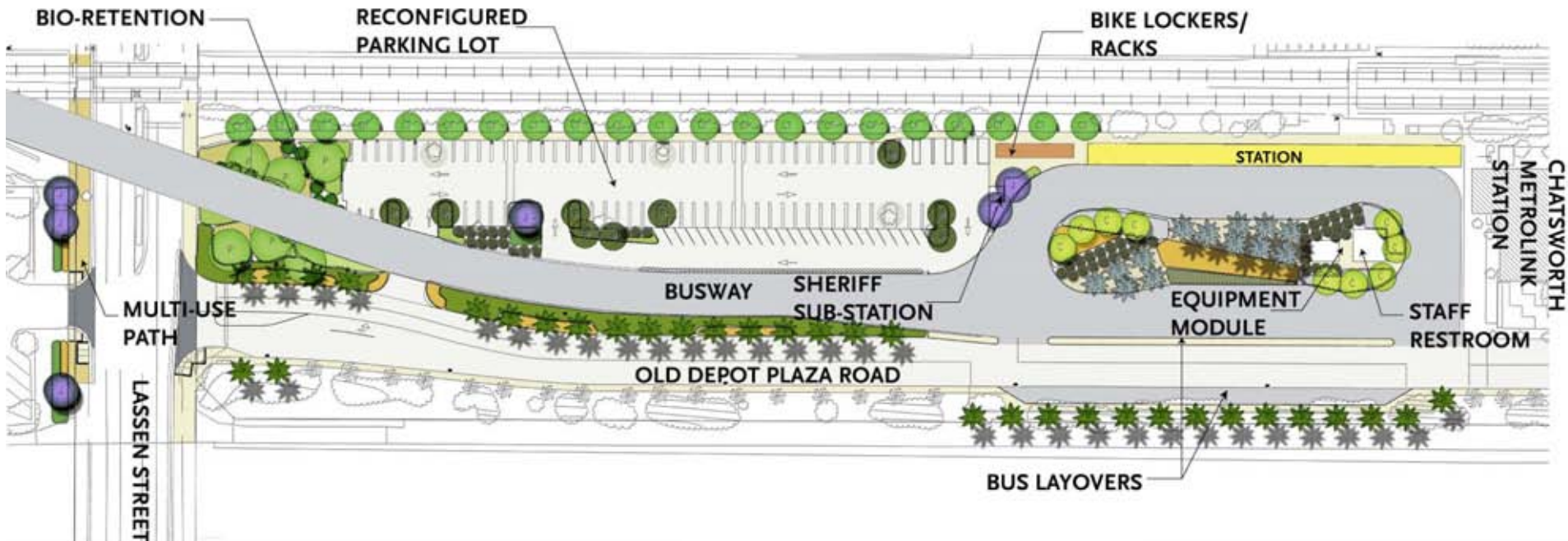
- Aesthetic Treatment Reduces Visual Impact
- Second Span Preserves Parking and Increases Visibility

# Lassen Street/Railroad Overcrossing

- Signalized Intersection on Lassen
- Eight-Foot Privacy Wall



# Chatsworth Station



# Chatsworth Station



# Environmental Clearance Study Areas

Issue Area	Mitigation Required	Level of Significance After Mitigation
Land Use and Development	✓	LS
Land Acquisition, Relocation, & Displacement	✓	LS
Population, Housing, & Environmental Justice	✓	LS
Parklands & Other Community Facilities	✓	LS
Historic, Archaeological, & Paleontological	✓	LS
Visual & Aesthetics Impacts	✓	LS
Traffic, Circulation, & Parking	✓	LS
Air Quality – Construction	✓	S
Air Quality – Operation	✓	LS
Noise – Construction	✓	S
Noise – Operation	✓	LS
Geology, Soils and Seismicity	✓	LS
Hazardous Materials	✓	LS
Water Resources	✓	LS
Biological Resources & Ecosystems	✓	LS
Energy		LS
Safety & Security	✓	LS

S = Significant  
LS = Less than Significant

# Example Mitigations

## Project:

- 8' Privacy Walls Adjacent to Three Mobile Home Parks
- Roadway/Intersection Improvements at all Primary Canoga Intersections
- Grade Separation Over Lassen and Railroad Tracks That will be Designed to be Aesthetically Pleasing
- CCTV Cameras Installed at Stations to Monitor Activities
- Landscaping and Bike/Pedestrian Path Adjacent to the Busway

## Construction:

- Construction Related Noise to be Limited With the Most Effective Locally Available Mufflers along with Other Suitable Noise Attenuation Devices
- Construction Contractors required to Limit Construction Activities that Generate Loud Noise Levels to Daytime Hours
- Crossing Guards at Worksites Near Schools

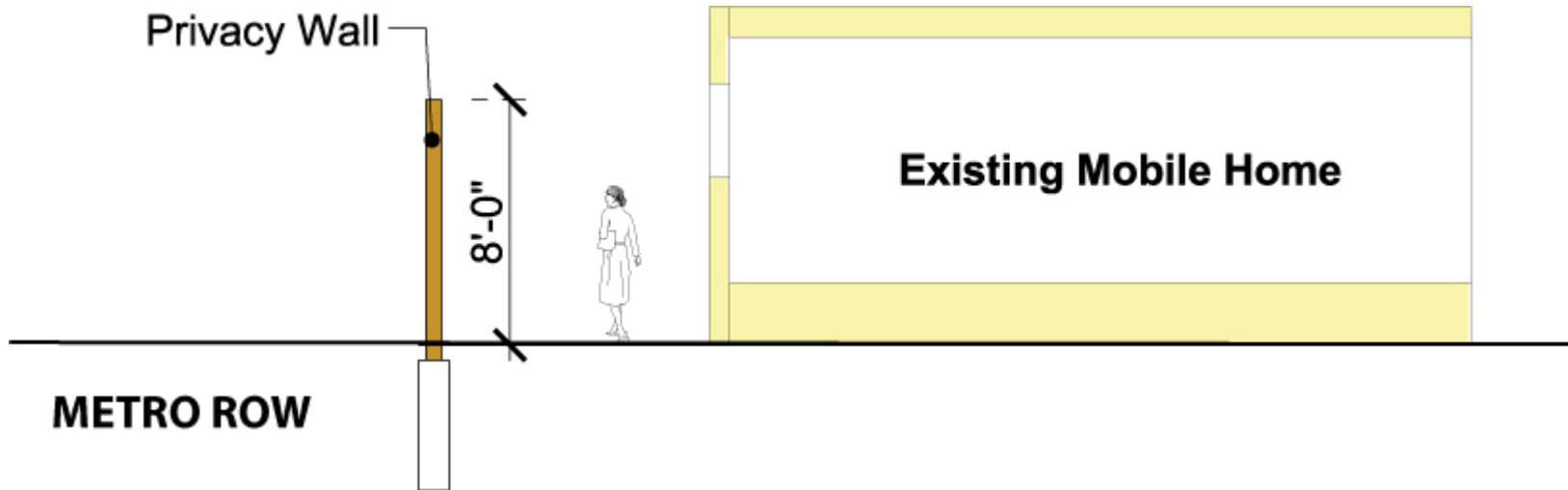
# Privacy wall



# Privacy wall

Privacy wall located at

- Chatsworth Mobile Home Park
- Eton Mobile Home Park
- Riviera Mobile Home Park



# Next Steps

- Preliminary Engineering (PE) - **In process**
- Final Environmental Impact Report (FEIR) – **In process**
- Board Actions for Early Calendar Year 2009:
  - Certification of the FEIR
  - Approve:
    - The Project
    - Mitigation Monitoring Plan
    - Statement of Overriding Considerations
    - Authorize Project to Move Forward

# Questions & Answers

# Marilla Paking Lot

