



WESTSIDE SUBWAY EXTENSION

Parklands and Other Community Facilities Technical Report



August 2010



Table of Contents

- 1.0 INTRODUCTION..... 1-1
 - 1.1 Overview..... 1-1
 - 1.2 Methodology..... 1-1
- 2.0 PROJECT DESCRIPTION 2-1
 - 2.1 No Build Alternative 2-1
 - 2.2 TSM Alternative 2-1
 - 2.3 Build Alternatives 2-1
 - 2.3.1 Alternative 1—Westwood/UCLA Extension 2-2
 - 2.3.2 Alternative 2—Westwood/Veterans Administration (VA) Hospital Extension 2-2
 - 2.3.3 Alternative 3—Santa Monica Extension..... 2-2
 - 2.3.4 Alternative 4—Westwood/VA Hospital Extension plus West Hollywood Extension 2-4
 - 2.3.5 Alternative 5—Santa Monica Extension plus West Hollywood Extension 2-4
 - 2.4 Stations and Segment Options 2-6
 - 2.4.1 Option 1—Wilshire/Crenshaw Station Option 2-9
 - 2.4.2 Option 2—Wilshire/Fairfax Station East Option..... 2-9
 - 2.4.3 Option 3—Wilshire/La Cienega Station Option..... 2-10
 - 2.4.4 Option 4—Century City Station and Segment Options 2-10
 - 2.4.5 Option 5—Westwood/UCLA Station Options 2-11
 - 2.4.6 Option 6—Westwood/VA Hospital Station Option 2-12
 - 2.5 Base Stations 2-12
 - 2.6 Other Components of the Build Alternatives 2-13
 - 2.6.1 Traction Power Substations 2-13
 - 2.6.2 Emergency Generators 2-13
 - 2.6.3 Mid-Tunnel Vent Shaft..... 2-13
 - 2.6.4 Trackwork Options 2-14
 - 2.6.5 Rail Operations Center 2-16
 - 2.6.6 Maintenance Yards 2-16
 - 2.7 Minimum Operable Segments 2-17
 - 2.7.1 MOS 1—Fairfax Extension..... 2-17
 - 2.7.2 MOS 2—Century City Extension 2-17
- 3.0 REGULATORY SETTING 3-1
 - 3.1 Federal Regulations 3-1
 - 3.2 State Regulations 3-1
 - 3.2.1 Parklands..... 3-1
 - 3.2.2 Educational Facilities..... 3-1
 - 3.2.3 Fire Services 3-1
 - 3.3 Local Regulations 3-2
 - 3.3.1 City of Los Angeles 3-2
 - 3.3.2 City of Beverly Hills..... 3-3
 - 3.3.3 City of West Hollywood..... 3-4
 - 3.3.4 City of Santa Monica..... 3-4
 - 3.3.5 Los Angeles County 3-5



4.0 AFFECTED ENVIRONMENT.....4-1

4.1 Parklands4-1

4.2 Police Services4-2

4.3 Fire Services4-2

4.4 Schools (Public and Private, All Levels of Education including Pre-school through Trade and College)4-9

4.5 Libraries4-9

4.6 Medical Facilities (hospitals and health centers)4-9

4.7 Religious Institutions.....4-10

4.8 Cemeteries4-11

4.9 Social Services (Adult Day Care, Senior Centers, Convalescent).....4-11

5.0 ENVIRONMENTAL IMPACTS/ENVIRONMENTAL CONSEQUENCES5-1

5.1 Operational Impacts—Overview5-1

5.1.1 No Build Alternative5-1

5.1.2 TSM Alternative5-1

5.1.3 Alternative 1—Westwood/UCLA Extension5-2

5.1.4 Alternative 2—Westwood/VA Hospital Extension5-3

5.1.5 Alternative 3—Santa Monica Extension5-5

5.1.6 Alternative 4—Westwood/VA Hospital Extension plus West Hollywood Extension5-5

5.1.7 Alternative 5—Santa Monica Extension plus West Hollywood Extension.....5-6

5.1.8 MOS 15-6

5.1.9 MOS 25-6

5.1.10 Future Vehicle Storage and Maintenance for All Alternatives.....5-6

6.0 MITIGATION MEASURES6-1

6.1 Mitigation for Operational Impacts6-1

6.2 Mitigation for Construction Impacts6-1

6.3 CEQA Determination6-2

6.4 Impacts Remaining After Mitigation.....6-2

REFERENCES R-1

List of Tables

Table 2-1. Alternatives and Stations Considered2-7

Table 2-2. Mid-Tunnel Vent Shaft Locations2-14

Table 2-3. Special Trackwork Locations.....2-15

Table 4-1. Summary of the Number of Parklands and Community Facilities within 0.25-mile of the Westside Corridor.....4-11

Table 4-2. Parklands and Recreation Resources within 0.25-mile of the Westside Corridor.....4-12

Table 4-3. Public Services Within 0.25-mile of the Westside Corridor4-13

Table 4-4. Other Community Facilities within 0.25-mile of the Westside Corridor.....4-14

Table 5-1. Summary of Impacts to Parklands and Recreation Resources within 0.25-mile of the Alternatives.....5-4

Table 5-2. Summary of Impacts to Police, Fire and Library Services Within 0.25-mile of the Westside Corridor..... 5-7

Table 5-3. Summary of Impacts to Other Community Facilities within 0.25-mile of the Westside Corridor 5-8

List of Figures

Figure 2-1. Alternative 1—Westwood/UCLA Extension 2-3

Figure 2-2. Alternative 2—Westwood/Veterans Administration (VA) Hospital Extension..... 2-3

Figure 2-3. Alternative 3—Santa Monica Extension..... 2-4

Figure 2-4. Alternative 4—Westwood/VA Hospital Extension plus West Hollywood Extension 2-5

Figure 2-5. Alternative 5—Santa Monica Extension plus West Hollywood Extension 2-5

Figure 2-6. Station and Alignment Options..... 2-8

Figure 2-7. Option 1—No Wilshire/Crenshaw Station Option 2-9

Figure 2-8. Option 2—Fairfax Station Option 2-9

Figure 2-9. Option 3—La Cienega Station Option 2-10

Figure 2-10. Century City Station Options..... 2-11

Figure 2-11. Option 5—Westwood/UCLA Station Options..... 2-12

Figure 2-12. Option 6—Westwood/VA Hospital Station North..... 2-12

Figure 2-13: Location of the Rail Operations Center and Maintenance Yards 2-16

Figure 2-14. UP Railroad Rail Bridge 2-17

Figure 2-15. Maintenance Yard Options 2-17

Figure 4-1. Final Parklands and Other Facilities (Wilshire/Crenshaw Station to Wilshire La Brea Station) 4-3

Figure 4-2. Final Parklands and Other Facilities (Wilshire/Fairfax Station to Wilshire/Rodeo Station) 4-4

Figure 4-3. Final Parklands and Other Facilities (Century City Station to Westwood/VA Hospital Station) 4-5

Figure 4-4. Final Parklands and Other Facilities (Wilshire/Bundy Station to Wilshire/4th Station) 4-6

Figure 4-5. Final Parklands and Other Facilities (Hollywood/Highlands Station to Santa Monica/San Vicente Station) 4-7



1.0 INTRODUCTION

1.1 Overview

The Westside Subway Extension (proposed project) would provide enhanced accessibility to parklands and a number of community facilities in the vicinity of each station. Along with beneficial effects of providing transit access, the same facilities may experience environmental impacts, primarily during construction, but also in some cases during operation. This technical report addresses these potential beneficial and adverse effects on parklands and other community facilities. Community facilities and services discussed in this report include police and fire protection, schools, libraries, medical facilities, churches, cemeteries, other social services (day care, senior centers), and parks.

1.2 Methodology

Potential impacts to parkland and community facilities were assessed by conducting an overview of all facilities located within 0.5-mile of either side of the project alignments, stations, and maintenance and operations facility sites, and identifying those within a 0.25-mile radius that could be directly or indirectly impacted by the proposed project. Direct impacts involve physical acquisition, displacement or relocation of parkland or a community facility, and indirect impacts involving changes to pedestrian or vehicular access.

Parklands as well as cultural and recreational facilities are also subject to guidelines established by Section 4(f) of the U.S. Department of Transportation Act (USC 1653 (f)). Use¹ of parkland or recreational property for the implementation of the build alternatives would be an adverse impact, requiring consultation with the U.S. Department of Transportation, U.S. Department of the Interior, State Department of Parks and Recreation, the Los Angeles City and County departments, and local agencies (City of Beverly Hills, City of Santa Monica, City of West Hollywood) that have jurisdiction over parks and recreational facilities in the corridor. An assessment of the project pursuant to Section 4(f) is provided in the report for Task 14.1.15, Section 4(f) Evaluation.

Information regarding these facilities has been gathered from the individual jurisdictions and coordinated with the land use, community and neighborhood impacts analysis and Section 4(f) Technical Report.

In addition, community facilities, parklands, and recreational facilities may be adversely affected by the noise and vibration from construction activities (refer to Task 14.1.18 Construction and Mitigation Technical Report) or from operation of the proposed project. Construction activities could also produce temporary air quality and traffic and transportation impacts at these facilities. Construction requirements for the subway tunnel and stations, structural characteristics of the community or recreational facility, and the schedule and level of activity at the facility could affect the level of impact.

¹23 CFR 774.17 defines “use” in three ways: 1) When land from a Section 4(f) resource is permanently incorporated into a transportation facility or project (actual use), 2) When there is a temporary occupancy of Section 4(f) resource that does not meet the five criteria of temporary use, and 3) When there is constructive use of the Section 4(f) resource.



Pedestrian and vehicular access analysis is discussed in the Draft Transportation Impacts Report. The results of the analysis of safety and security issues for motorists and the surrounding community is reported in the Draft Safety and Security Hazards and Threat Assessment Technical Report. Other potential indirect impacts related to air quality and noise impacts analysis are discussed in the Air Quality Technical Report and the Noise and Vibration Technical Report.



2.0 PROJECT DESCRIPTION

This chapter describes the alternatives that have been considered to best satisfy the Purpose and Need and have been carried forward for further study in the Draft Environmental Impact Statement/Environmental Impact Report (EIS/EIR). Details of the No Build, Transportation System Management (TSM), and the five Build Alternatives (including their station and alignment options and phasing options (or minimum operable segments [MOS]) are presented in this chapter.

2.1 No Build Alternative

The No Build Alternative provides a comparison of what future conditions would be like if the Project were not built. The No Build Alternative includes all existing highway and transit services and facilities, and the committed highway and transit projects in the Metro LRTP and the SCAG RTP. Under the No Build Alternative, no new transportation infrastructure would be built within the Study Area, aside from projects currently under construction or projects funded for construction, environmentally cleared, planned to be in operation by 2035, and identified in the adopted Metro LRTP.

2.2 TSM Alternative

The TSM Alternative emphasizes more frequent bus service than the No Build Alternative to reduce delay and enhance mobility. The TSM Alternative contains all elements of the highway, transit, Metro Rail, and bus service described under the No Build Alternative. In addition, the TSM Alternative increases the frequency of service for Metro Bus Line 720 (Santa Monica–Commerce via Wilshire Boulevard and Whittier Boulevard) to between three and four minutes during the peak period.

In the TSM Alternative, Metro Purple Line rail service to the Wilshire/Western Station would operate in each direction at 10-minute headways during peak and off-peak periods. The Metro Red Line service to Hollywood/Highland Station would operate in each direction at five-minute headways during peak periods and at 10-minute headways during midday and off-peak periods.

2.3 Build Alternatives

The Build Alternatives are considered to be the “base” alternatives with “base” stations. Alignment (or segment) and station options were developed in response to public comment, design refinement, and to avoid and minimize impacts to the environment.

The Build Alternatives extend heavy rail transit (HRT) service in subway from the existing Metro Purple Line Wilshire/Western Station. HRT systems provide high speed (maximum of 70 mph), high capacity (high passenger-carrying capacity of up to 1,000 passengers per train and multiple unit trains with up to six cars per train), and reliable service since they operate in an exclusive grade-separated right-of-way. The subway will operate in a tunnel at least 30 to 70 feet below ground and will be electric powered.

Furthermore, the Build Alternatives include changes to the future bus services. Metro Bus Line 920 would be eliminated and a portion of Line 20 in the City of Santa Monica would be eliminated since it would be duplicated by the Santa Monica Blue Bus Line 2. Metro Rapid



Bus Line 720 would operate less frequently since its service route would be largely duplicated by the Westside Subway route. In the City of Los Angeles, headways (time between buses) for Line 720 are between 3 and 5 minutes under the existing network and will be between 5 and 11.5 minutes under the Build Alternatives, but no change in Line 720 would occur in the City of Santa Monica segment. Service frequencies on other Metro Rail lines and bus routes in the corridor would be the same as for the No Build Alternative.

2.3.1 Alternative 1—Westwood/UCLA Extension

This alternative extends the existing Metro Purple Line from the Wilshire/Western Station to a Westwood/UCLA Station (Figure 2-1). From the Wilshire/Western Station, Alternative 1 travels westerly beneath Wilshire Boulevard to the Wilshire/Rodeo Station and then southwesterly toward a Century City Station. Alternative 1 then extends from Century City and terminates at a Westwood/UCLA Station. The alignment is approximately 8.60 miles in length.

Alternative 1 would operate in each direction at 3.3-minute headways during morning and evening peak periods and at 10-minute headways during midday. The estimated one-way running time is 12 minutes 39 seconds from the Wilshire/Western Station.

2.3.2 Alternative 2—Westwood/Veterans Administration (VA) Hospital Extension

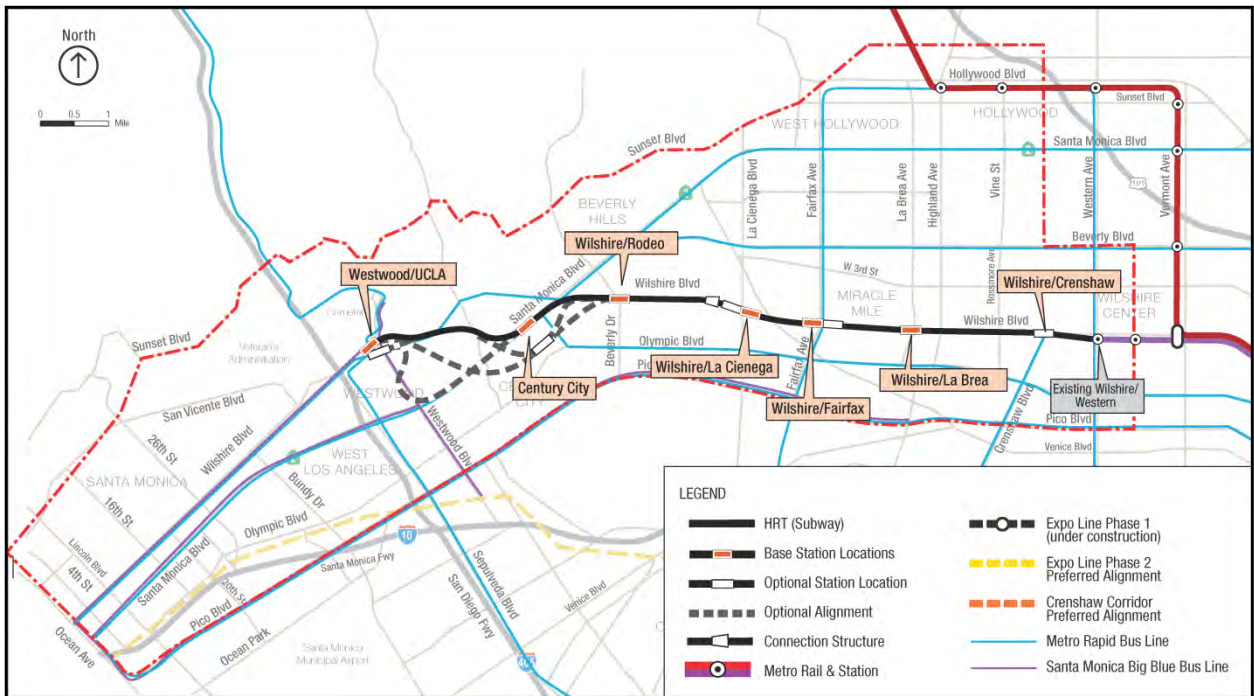
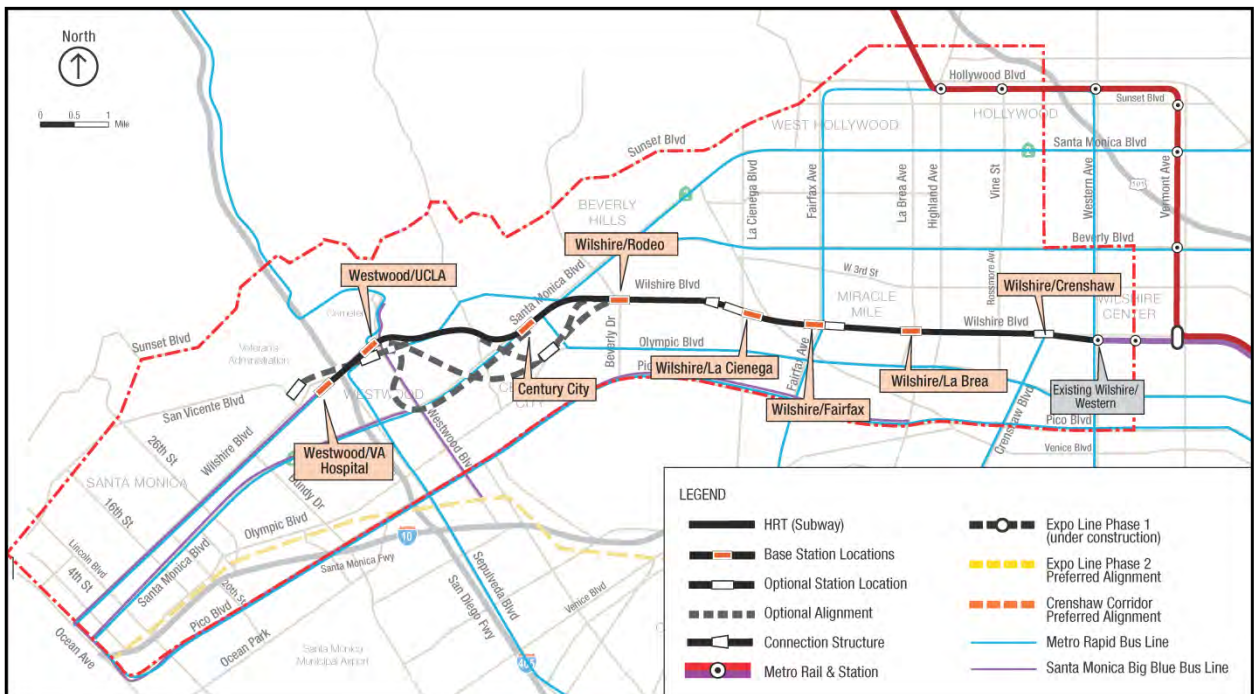
This alternative extends the existing Metro Purple Line from the Wilshire/Western Station to a Westwood/VA Hospital Station (Figure 2-2). Similar to Alternative 1, Alternative 2 extends the subway from the Wilshire/Western Station to a Westwood/UCLA Station. Alternative 2 then travels westerly under Veteran Avenue and continues west under the I-405 Freeway, terminating at a Westwood/VA Hospital Station. This alignment is 8.96 miles in length from the Wilshire/Western Station.

Alternative 2 would operate in each direction at 3.3-minute headways during the morning and evening peak periods and at 10-minute headways during the midday, off-peak period. The estimated one-way running time is 13 minutes 53 seconds from the Wilshire/Western Station.

2.3.3 Alternative 3—Santa Monica Extension

This alternative extends the existing Metro Purple Line from the Wilshire/Western Station to the Wilshire/4th Station in Santa Monica (Figure 2-3). Similar to Alternative 2, Alternative 3 extends the subway from the Wilshire/Western Station to a Westwood/VA Hospital Station. Alternative 3 then continues westerly under Wilshire Boulevard and terminates at the Wilshire/4th Street Station between 4th and 5th Streets in Santa Monica. The alignment is 12.38 miles.

Alternative 3 would operate in each direction at 3.3-minute headways during the morning and evening peak periods and operate with 10-minute headways during the midday, off-peak period. The estimated one-way running time is 19 minutes 27 seconds from the Wilshire/Western Station.


Figure 2-1. Alternative 1—Westwood/UCLA Extension

Figure 2-2. Alternative 2—Westwood/Veterans Administration (VA) Hospital Extension

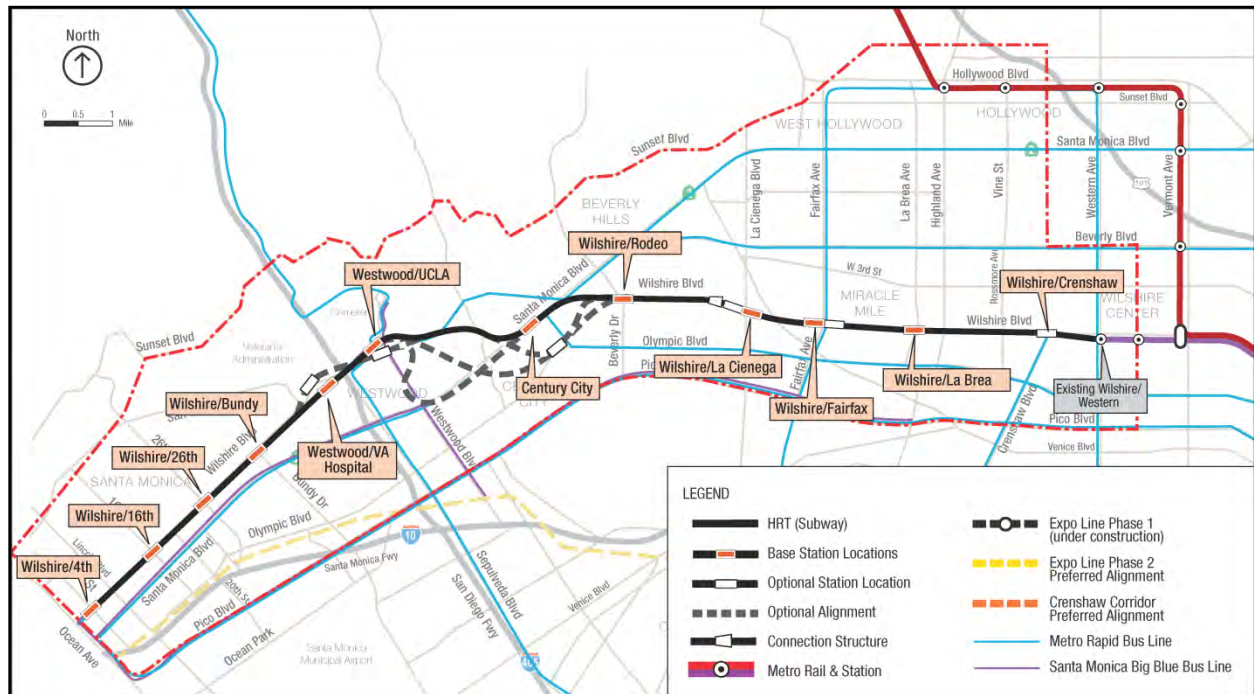


Figure 2-3. Alternative 3—Santa Monica Extension

2.3.4 Alternative 4—Westwood/VA Hospital Extension plus West Hollywood Extension

Similar to Alternative 2, Alternative 4 extends the existing Metro Purple Line from the Wilshire/Western Station to a Westwood/VA Hospital Station. Alternative 4 also includes a West Hollywood Extension that connects the existing Metro Red Line Hollywood/Highland Station to a track connection structure near Robertson and Wilshire Boulevards, west of the Wilshire/La Cienega Station (Figure 2-4). The alignment is 14.06 miles long.

Alternative 4 would operate from Wilshire/Western to a Westwood/VA Hospital Station in each direction at 3.3-minute headways during morning and evening peak periods and 10-minute headways during the midday off-peak period. The West Hollywood extension would operate at 5-minute headways during peak periods and 10-minute headways during the midday, off-peak period. The estimated one-way running time for the Metro Purple Line extension is 13 minutes 53 seconds, and the running time for the West Hollywood from Hollywood/Highland to Westwood/VA Hospital is 17 minutes and 2 seconds.

2.3.5 Alternative 5—Santa Monica Extension plus West Hollywood Extension

Similar to Alternative 3, Alternative 5 extends the existing Metro Purple Line from the Wilshire/Western Station to the Wilshire/4th Station and also adds a West Hollywood Extension similar to the extension described in Alternative 4 (Figure 2-5). The alignment is 17.49 miles in length. Alternative 5 would operate the Metro Purple Line extension in each direction at 3.3-minute headways during the morning and evening peak periods and 10-minute headways during the midday, off-peak period. The West Hollywood extension would operate in each direction at 5-minute headways during peak periods and 10-minute headways during the midday, off-peak period. The estimated one-way running time for the Metro Purple Line extension is 19 minutes 27 seconds, and the running time from the Hollywood/Highland Station to the Wilshire/4th Station is 22 minutes 36 seconds.

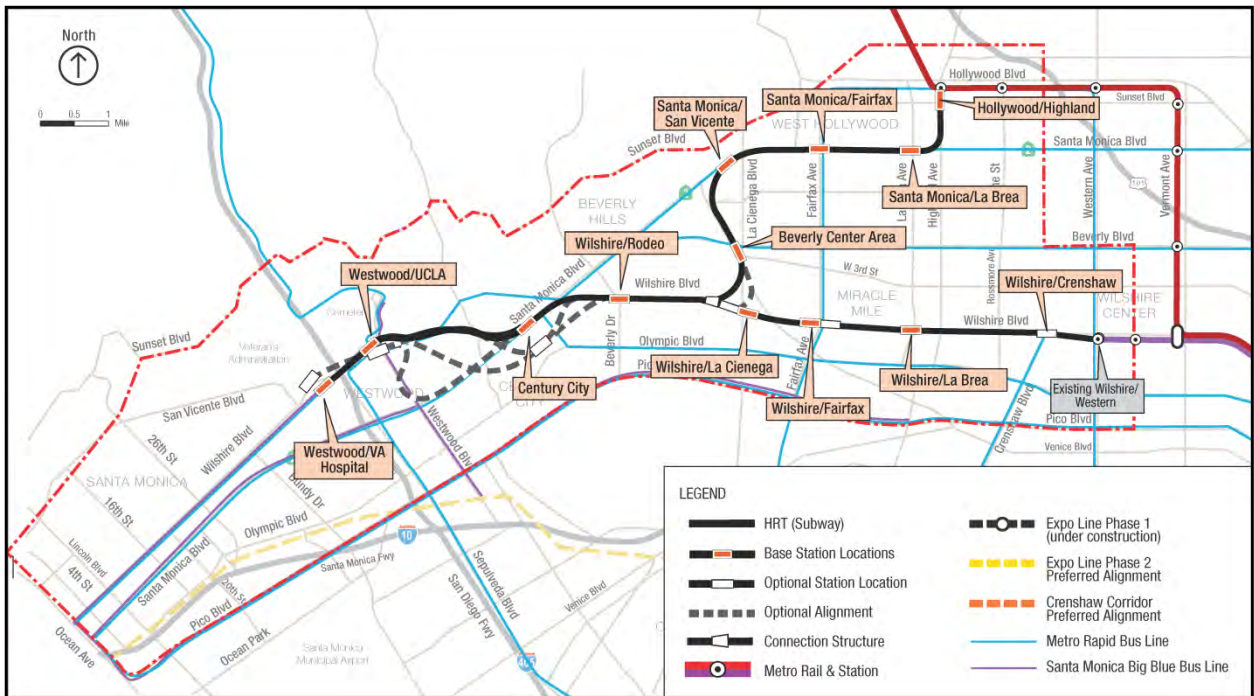


Figure 2-4. Alternative 4—Westwood/VA Hospital Extension plus West Hollywood Extension

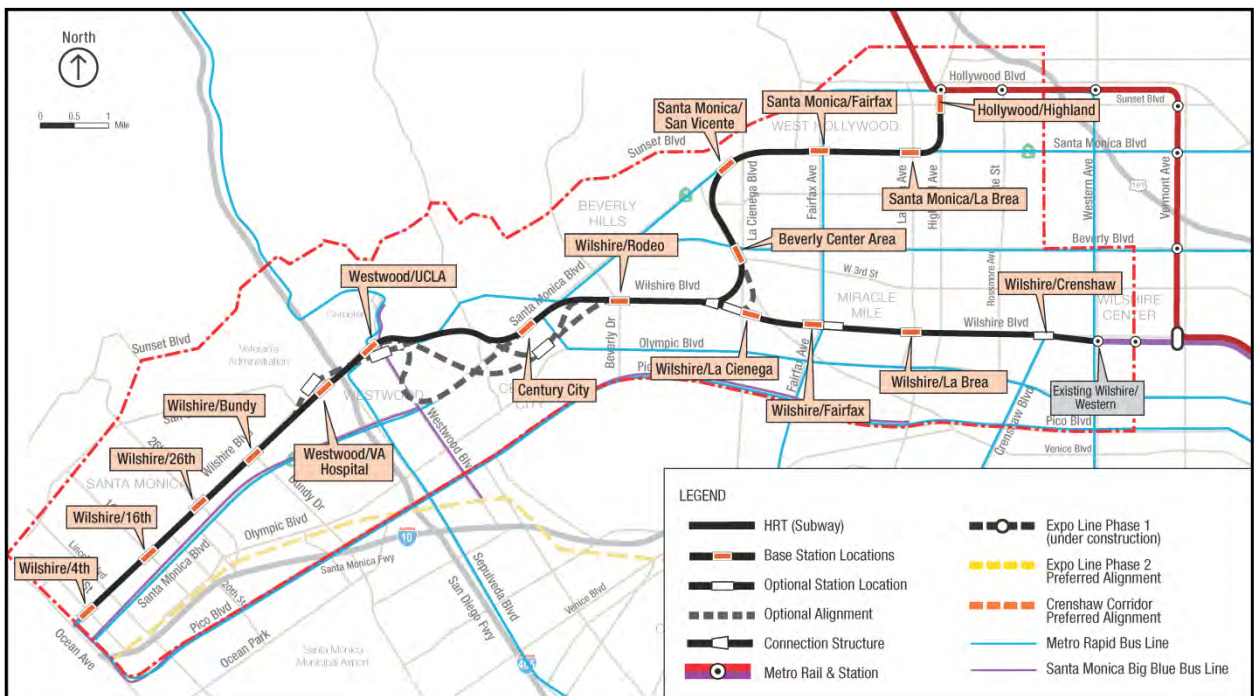


Figure 2-5. Alternative 5—Santa Monica Extension plus West Hollywood Extension



2.4 Stations and Segment Options

HRT stations consist of a station “box,” or area in which the basic components are located. The station box can be accessed from street-level entrances by stairs, escalators, and elevators that would bring patrons to a mezzanine level where the ticketing functions are located. The 450-foot platforms are one level below the mezzanine level and allow level boarding (i.e., the train car floor is at the same level as the platform). Stations consist of a center or side platform. Each station is equipped with under-platform exhaust shafts, over-track exhaust shafts, blast relief shafts, and fresh air intakes. In most stations, it is anticipated that only one portal would be constructed as part of the Project, but additional portals could be developed as a part of station area development (by others). Stations and station entrances would comply with the *Americans with Disabilities Act of 1990*, Title 24 of the California Code of Regulations, the California Building Code, and the Department of Transportation Subpart C of Section 49 CFR Part 37.

Platforms would be well-lighted and include seating, trash receptacles, artwork, signage, safety and security equipment (closed-circuit television, public announcement system, passenger assistance telephones), and a transit passenger information system. The fare collection area includes ticket vending machines, fare gates, and map cases.

Table 2-1 lists the stations and station options evaluated and the alternatives to which they are applicable. Figure 2-6 shows the proposed station and alignment options. These include:

- Option 1—Wilshire/Crenshaw Station Option
- Option 2—Fairfax Station Option
- Option 3—La Cienega Station Option
- Option 4—Century City Station and Alignment Options
- Option 5—Westwood/UCLA Station Option
- Option 6—Westwood/VA Hospital Station Option

Table 2-1. Alternatives and Stations Considered

Stations	Alternatives				
	1 Westwood/ UCLA Extension	2 Westwood/ VA Hospital Extension	3 Santa Monica Extension	4 Westwood/ VA Hospital Extension Plus West Hollywood Extension	5 Santa Monica Extension Plus West Hollywood Extension
Base Stations					
Wilshire/Crenshaw	•	•	•	•	•
Wilshire/La Brea	•	•	•	•	•
Wilshire/Fairfax	•	•	•	•	•
Wilshire/La Cienega	•	•	•	•	•
Wilshire/Rodeo	•	•	•	•	•
Century City (Santa Monica Blvd)	•	•	•	•	•
Westwood/UCLA (Off-street)	•	•	•	•	•
Westwood/VA Hospital		•	•	•	•
Wilshire/Bundy			•		•
Wilshire/26th			•		•
Wilshire/16th			•		•
Wilshire/4th			•		•
Hollywood/Highland				•	•
Santa Monica/La Brea				•	•
Santa Monica/Fairfax				•	•
Santa Monica/San Vicente				•	•
Beverly Center Area				•	•
Station Options					
1—No Wilshire/Crenshaw	•	•	•	•	•
2—Wilshire/Fairfax East	•	•	•	•	•
3—Wilshire/La Cienega (Transfer Station)	•	•	•	•	•
4—Century City (Constellation Blvd)	•	•	•	•	•
5—Westwood/UCLA (On-street)	•	•	•	•	•
6—Westwood/VA Hospital North		•	•	•	•

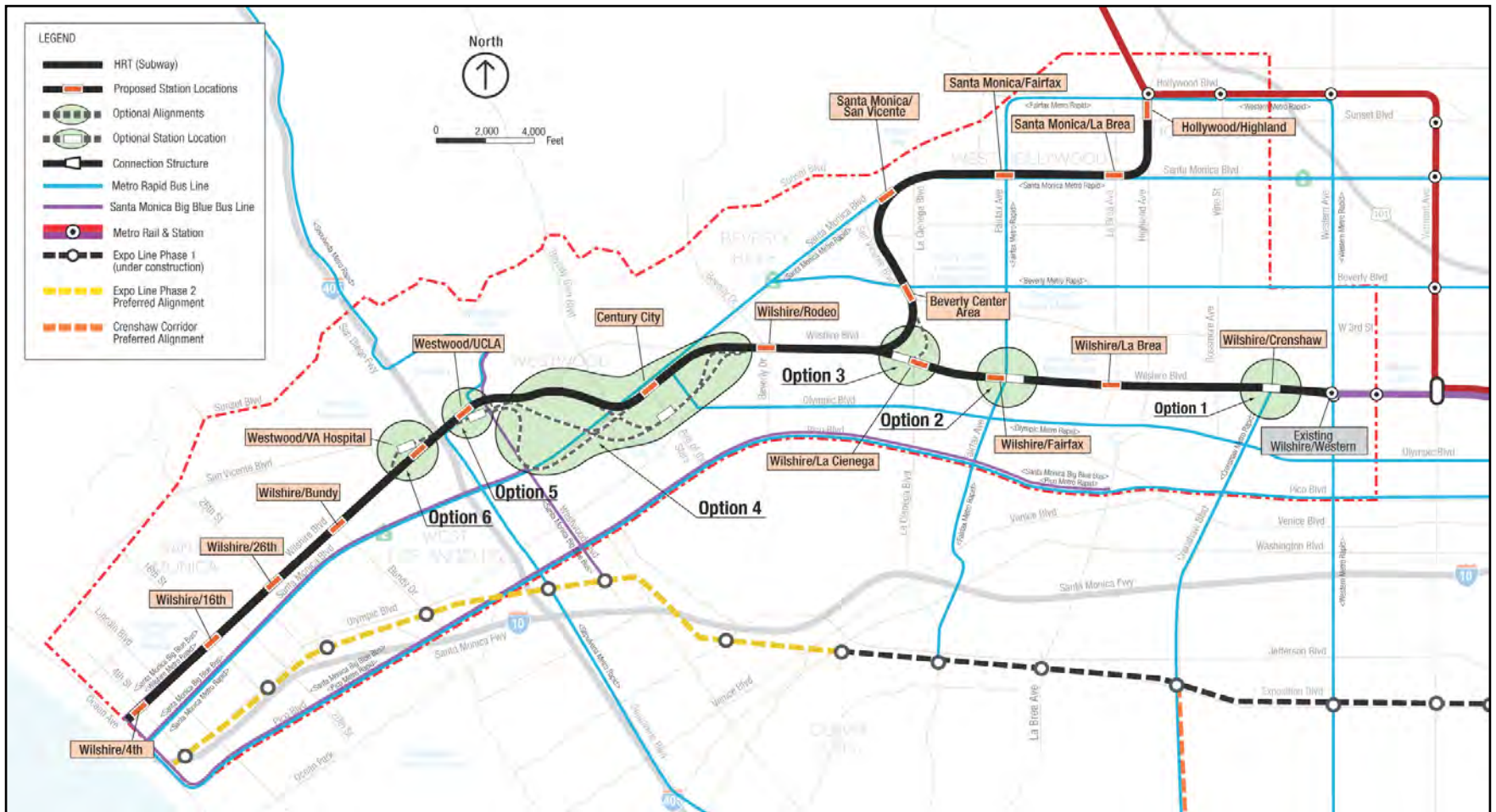


Figure 2-6. Station and Alignment Options

2.4.1 Option 1—Wilshire/Crenshaw Station Option

- **Base Station: Wilshire/Crenshaw Station**—The base station straddles Crenshaw Boulevard, between Bronson Avenue and Lorraine Boulevard.
- **Station Option: Remove Wilshire/Crenshaw Station**—This station option would delete the Wilshire/Crenshaw Station. Trains would run from the Wilshire/Western Station to the Wilshire/La Brea Station without stopping at Crenshaw. A vent shaft would be constructed at the intersection of Western Avenue and Wilshire Boulevard (Figure 2-7).

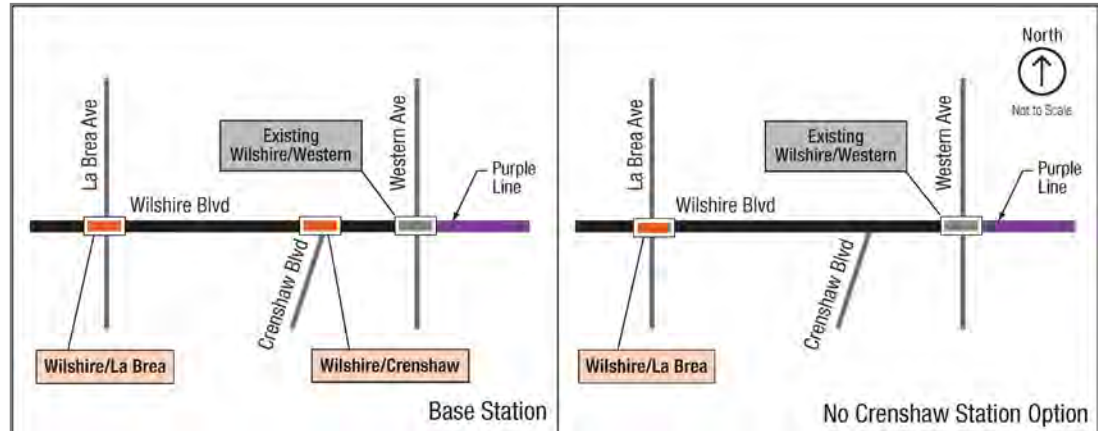


Figure 2-7. Option 1—No Wilshire/Crenshaw Station Option

2.4.2 Option 2—Wilshire/Fairfax Station East Option

- **Base Station: Wilshire/Fairfax Station**—The base station is under the center of Wilshire Boulevard, immediately west of Fairfax Avenue.
- **Station Option: Wilshire/Fairfax Station East Station Option**—This station option would locate the Wilshire/Fairfax Station farther east, with the station underneath the Wilshire/Fairfax intersection (Figure 2-8). The east end of the station box would be east of Orange Grove Avenue in front of LACMA, and the west end would be west of Fairfax Avenue.

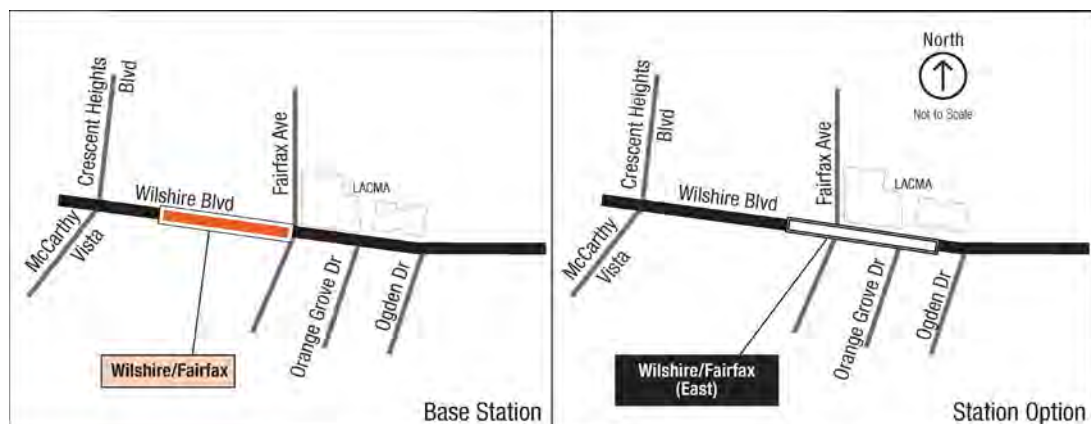


Figure 2-8. Option 2—Fairfax Station Option

2.4.3 Option 3—Wilshire/La Cienega Station Option

- Base Station: Wilshire/La Cienega Station**—The base station would be under the center of Wilshire Boulevard, immediately east of La Cienega Boulevard. A direct transfer between the Metro Purple Line and the potential future West Hollywood Line is not provided with this station. Instead, a connection structure is proposed west of Robertson Boulevard as a means to provide a future HRT connection to the West Hollywood Line.
- Station Option: Wilshire/La Cienega Station West with Connection Structure**—The station option would be located west of La Cienega Boulevard, with the station box extending from the Wilshire/Le Doux Road intersection to just west of the Wilshire/Carson Road intersection (Figure 2-9). It also contains an alignment option that would provide an alternate HRT connection to the future West Hollywood Extension. This alignment portion of Option 3 is only applicable to Alternatives 4 and 5.

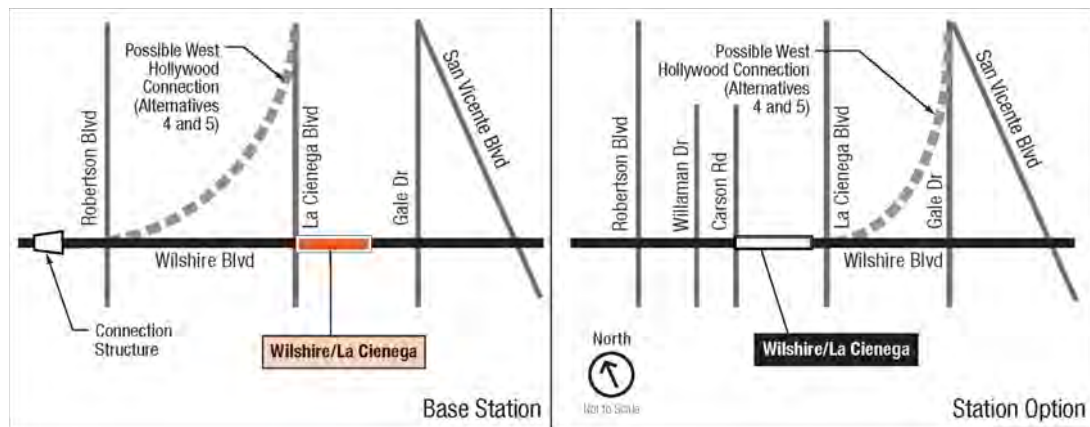


Figure 2-9. Option 3—La Cienega Station Option

2.4.4 Option 4—Century City Station and Segment Options

2.4.4.1 Century City Station and Beverly Hills to Century City Segment Options

- Base Station: Century City (Santa Monica) Station**—The base station would be under Santa Monica Boulevard, centered on Avenue of the Stars.
- Station Option: Century City (Constellation) Station**—With Option 4, the Century City Station has a location option on Constellation Boulevard (Figure 2-10), straddling Avenue of the Stars and extending westward to east of MGM Drive.
- Segment Options**—Three route options are proposed to connect the Wilshire/Rodeo Station to Century City (Constellation) Station: Constellation North and Constellation South. As shown in Figure 2-10, the base segment to the base Century City (Santa Monica) Station is shown in the solid black line and the segment options to Century City (Constellation) Station are shown in the dashed grey lines.

2.4.4.2 Century City to Westwood Segment Options

Three route options considered for connecting the Century City and Westwood stations include: East, Central, and West. As shown in Figure 2-10, each of these three segments would be accessed from both Century City Stations and both Westwood/UCLA Stations. The base segment is shown in the solid black line and the options are shown in the dashed grey lines.

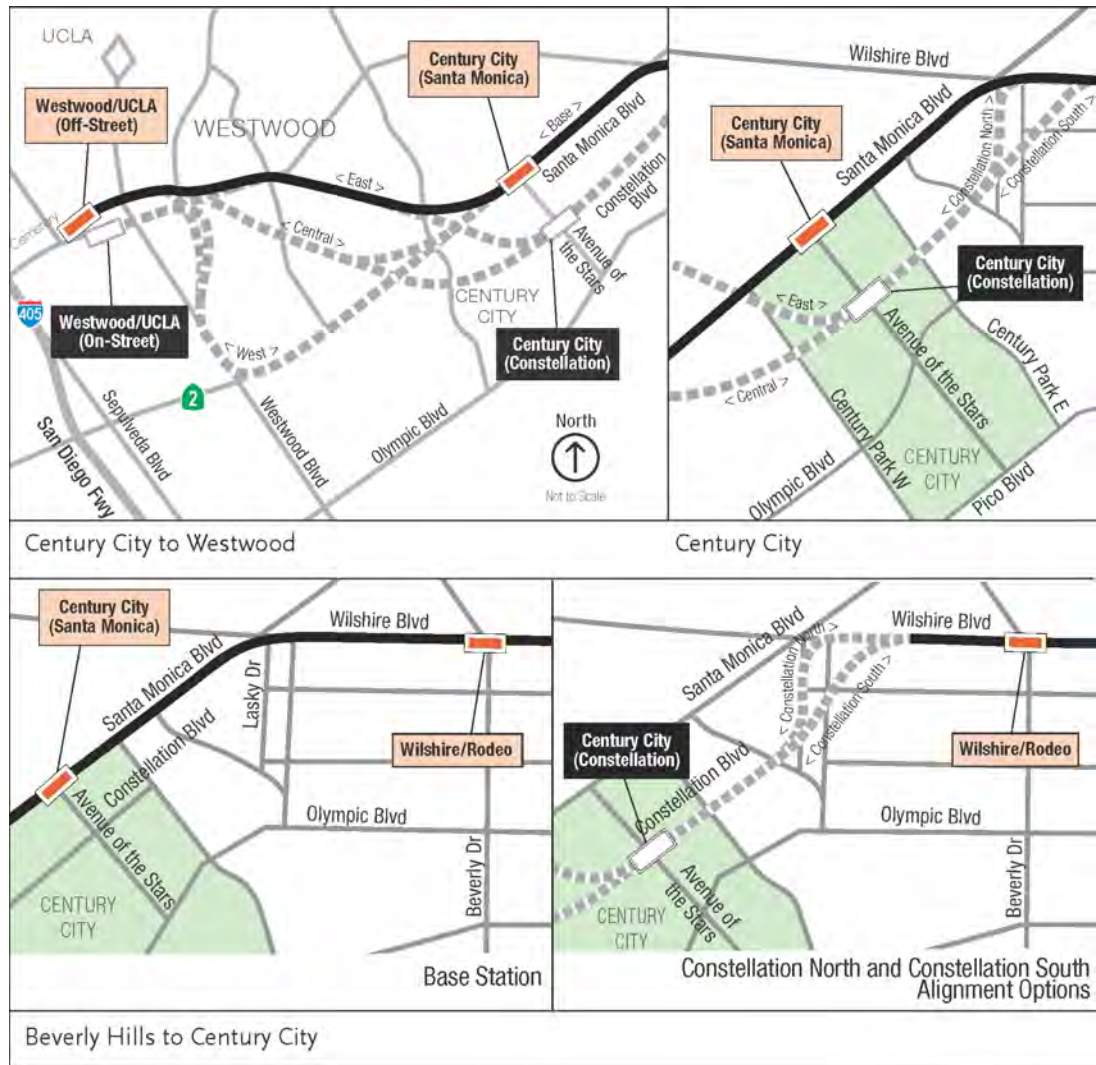


Figure 2-10. Century City Station Options

2.4.5 Option 5—Westwood/UCLA Station Options

- **Base Station: Westwood/UCLA Station Off-Street Station Option**—The base station is located under the UCLA Lot 36 on the north side of Wilshire Boulevard between Gayley and Veteran Avenues.
- **Station Option: Westwood/UCLA On-Street Station Option**—This station option would be located under the center of Wilshire Boulevard, immediately west of Westwood Boulevard (Figure 2-11).

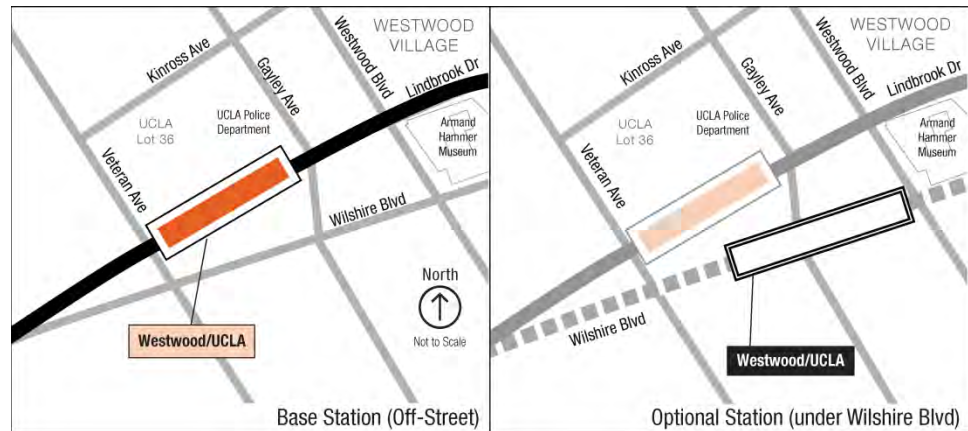


Figure 2-11. Option 5—Westwood/UCLA Station Options

2.4.6 Option 6—Westwood/VA Hospital Station Option

- **Base Station: Westwood/VA Hospital**—The base station would be below the VA Hospital parking lot on the south side of Wilshire Boulevard in between the I-405 exit ramp and Bonsall Avenue.
- **Station Option: Westwood/VA Hospital North Station**—This station option would locate the Westwood/VA Hospital Station on the north side of Wilshire Boulevard between Bonsall Avenue and Wadsworth Theater. (Figure 2-12)

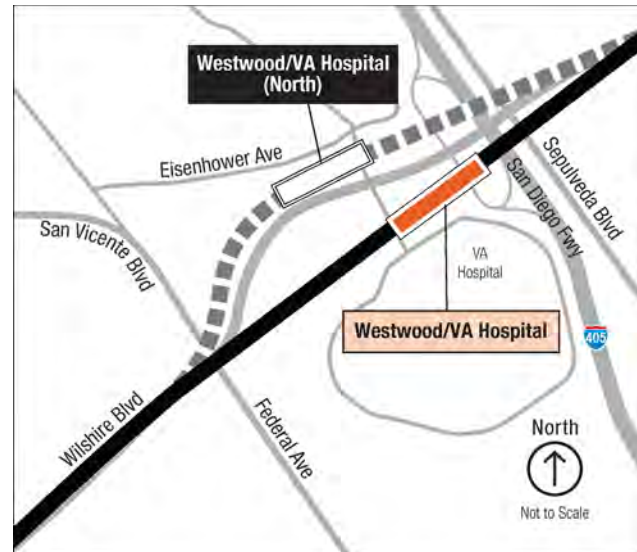


Figure 2-12. Option 6—Westwood/VA Hospital Station North

To access the Westwood/VA Hospital Station North, the alignment would extend westerly from the Westwood/UCLA Station under Veteran Avenue, the Federal Building property, the I-405 Freeway, and under the Veterans Administration property just east of Bonsall Avenue.

2.5 Base Stations

The remaining stations (those without options) are described below.

- **Wilshire/La Brea Station**—This station would be located between La Brea and Cloverdale Avenues.
- **Wilshire/Rodeo Station**—This station would be under the center of Wilshire Boulevard, beginning just west of South Canon Drive and extending to El Camino Drive.
- **Wilshire/Bundy Station**—This station would be under Wilshire Boulevard, east of Bundy Drive, extending just east of Saltair Avenue.



- **Wilshire/26th Station**—This station would be under Wilshire Boulevard, with the eastern end east of 26th Street and the western end west of 25th Street, midway between 25th Street and Chelsea Avenue.
- **Wilshire/16th Station**—This station would be under Wilshire Boulevard with the eastern end just west of 16th Street and the western end west of 15th Street.
- **Wilshire/4th Station**—This station would be under Wilshire Boulevard and 4th Street in Santa Monica.
- **Hollywood/Highland Station**—This station would be located under Highland Avenue and would provide a transfer option to the existing Metro Red Line Hollywood/Highland Station under Hollywood Boulevard.
- **Santa Monica/La Brea Station**—This station would be under Santa Monica Boulevard, just west of La Brea Avenue, and would extend westward to the center of the Santa Monica Boulevard/Formosa Avenue.
- **Santa Monica/Fairfax Station**—This station is under Santa Monica Boulevard and would extend from just east of Fairfax Avenue to just east of Ogden Drive.
- **Santa Monica/San Vicente Station**—This station would be under Santa Monica Boulevard and would extend from just west of Hancock Avenue on the west to just east of Westmount Drive on the east.
- **Beverly Center Area Station**—This station would be under San Vicente Boulevard, extending from just south of Gracie Allen Drive to south of 3rd Street.

2.6 Other Components of the Build Alternatives

2.6.1 Traction Power Substations

Traction power substations (TPSS) are required to provide traction power for the HRT system. Substations would be located in the station box or in a box located with the crossover tracks and would be located in a room that is about 50 feet by 100 feet in a below grade structure.

2.6.2 Emergency Generators

Stations at which the emergency generators would be located are Wilshire/La Brea, Wilshire/La Cienega, Westwood/UCLA, Westwood/VA Hospital, Wilshire/26th, Highland/Hollywood, Santa Monica/La Brea, and Santa Monica/San Vicente. The emergency generators would require approximately 50 feet by 100 feet of property in an off-street location. All would require property acquisition, except for the one at the Wilshire/La Brea Station which uses Metro's property.

2.6.3 Mid-Tunnel Vent Shaft

Each alternative would require mid-tunnel ventilation shafts. The vent shafts are emergency ventilation shafts with dampers, fans, and sound attenuators generally placed at both ends of a station box to exhaust smoke. In addition, emergency vent shafts could be used for station cooling and gas mitigation. The vent shafts are also required in tunnel segments with more than 6,000 feet between stations to meet fire/life safety requirements. There would be a connecting corridor between the two tunnels (one for each direction of train movement) to provide emergency egress and fire-fighting ingress. A vent shaft is approximately 150 square



feet; with the opening of the shaft located in a sidewalk and covered with a grate about 200 square feet.

Table 2-2. Mid-Tunnel Vent Shaft Locations

Alternative/Option	Location
Alternatives 1 through 5, MOS 2	Part of the connection structure on Wilshire Boulevard, west of Robertson Boulevard
Alternatives 2 through 5	West of the Westwood/VA Hospital Station on Army Reserve property at Federal Avenue and Wilshire Boulevard
Option 4 via East route	At Wilshire Boulevard/Manning Avenue intersection
Option 4 to Westwood/UCLA Off-Street Station via Central route	On Santa Monica Boulevard just west of Beverly Glen Boulevard
Option 4 to Westwood/UCLA On-Street Station via Central route	At Santa Monica Boulevard/Beverly Glen Boulevard intersection
Options 4 via West route	At Santa Monica Boulevard/Glendon Avenue intersection
Options 4 from Constellation Station via Central route	On Santa Monica Boulevard between Thayer and Pandora Avenues
Option from Constellation Station via West route	On Santa Monica Boulevard just east of Glendon Avenue

2.6.4 Trackwork Options

Each Build Alternative requires special trackwork for operational efficiency and safety (Table 2-3):

- **Tail tracks**—a track, or tracks, that extends beyond a terminal station (the last station on a line)
- **Pocket tracks**—an additional track, or tracks, adjacent to the mainline tracks generally at terminal stations
- **Crossovers**—a pair of turnouts that connect two parallel rail tracks, allowing a train on one track to cross over to the other
- **Double crossovers**—when two sets of crossovers are installed with a diamond allowing trains to cross over to another track

Table 2-3. Special Trackwork Locations

Station	Alternative 1	Alternative 2	Alternative 3	Alternative 4	Alternative 5
	Westwood/ UCLA Extension	Westwood/ VA Hospital Extension	Santa Monica Extension	Westwood/VA Hospital Extension Plus West Hollywood Extension	Santa Monica Extension Plus West Hollywood Extension
Special Trackwork Locations—Base Trackwork Alternatives					
Wilshire/Crenshaw	None	None	None	None	None
Wilshire/La Brea	Double Crossover	Double Crossover	Double Crossover	Double Crossover	Double Crossover
Wilshire/Fairfax	None <i>MOS 1 Only; Terminus Station with Tail tracks</i>	None <i>MOS 1 Only; Terminus Station with Tail tracks</i>	None <i>MOS 1 Only; Terminus Station with Tail tracks</i>	None <i>MOS 1 Only; Terminus Station with Tail tracks</i>	None <i>MOS 1 Only; Terminus Station with Tail tracks</i>
Wilshire/La Cienega	None	None	None	None	None
<i>Station Option 3 - Wilshire/La Cienega West</i>	Turnouts	Turnouts	Turnouts		
Wilshire/Robertson Connection Structure	Equilateral Turnouts—for future West Hollywood connection	Equilateral Turnouts—for future West Hollywood connection	Equilateral Turnouts—for future West Hollywood connection	Equilateral Turnouts	Equilateral Turnouts
Wilshire/Rodeo	None	None	None	None	None
Century City	Double Crossover <i>MOS 2 Only; Terminus Station with Double Crossover and tail tracks</i>	Double Crossover <i>MOS 2 Only; Terminus Station with Double Crossover and tail tracks</i>	Double Crossover <i>MOS 2 Only; Terminus Station with Double Crossover and tail tracks</i>	Double Crossover <i>MOS 2 Only; Terminus Station with Double Crossover and tail tracks</i>	Double Crossover <i>MOS 2 Only; Terminus Station with Double Crossover and tail tracks</i>
Westwood/UCLA	End Terminal with Double Crossover and tail tracks	Double Crossover	Double Crossover	Double Crossover	Double Crossover
Westwood/VA Hospital	N/A	End Terminal with Turnouts and tail tracks	Turnouts	End Terminal with Turnouts and tail tracks	Turnouts
Wilshire/Bundy	N/A	N/A	None	N/A	None
Wilshire/26th	N/A	N/A	None	N/A	None
Wilshire/16th	N/A	N/A	None	N/A	None
Wilshire/4th	N/A	N/A	End Terminal with Double Crossover. Pocket Track with Double Crossover, Equilateral Turnouts and tail tracks	N/A	End Terminal with Double Crossover, Pocket Track with Double Crossover, Equilateral Turnouts and tail tracks
Hollywood/ Highland	N/A	N/A	N/A	Double Crossover and tail tracks	Double Crossover and tail tracks
Santa Monica/La Brea	N/A	N/A	N/A	None	None
Santa Monica/Fairfax	N/A	N/A	N/A	None	None
Santa Monica/ San Vicente	N/A	N/A	N/A	Double Crossover	Double Crossover
Beverly Center	N/A	N/A	N/A	None	None
Additional Special Trackwork Location (Optional Trackwork)					
Wilshire/Fairfax	Double Crossover	Double Crossover	Double Crossover	Double Crossover	Double Crossover
Wilshire/La Cienega	Double Crossover	Double Crossover	Double Crossover	Double Crossover	Double Crossover
Wilshire/ Rodeo	Pocket Track	Pocket Track	Pocket Track	Pocket Track	Pocket Track
Wilshire/26th	N/A	N/A	Double Crossover	N/A	Double Crossover



2.6.5 Rail Operations Center

The existing Rail Operations Center (ROC) (Figure 2-13), located in Los Angeles near the intersection of Imperial Highway and the Metro Blue Line does not have sufficient room to accommodate the new transit corridors and line extensions in Metro’s expansion program. The Build Alternatives assume an expanded ROC at this location.

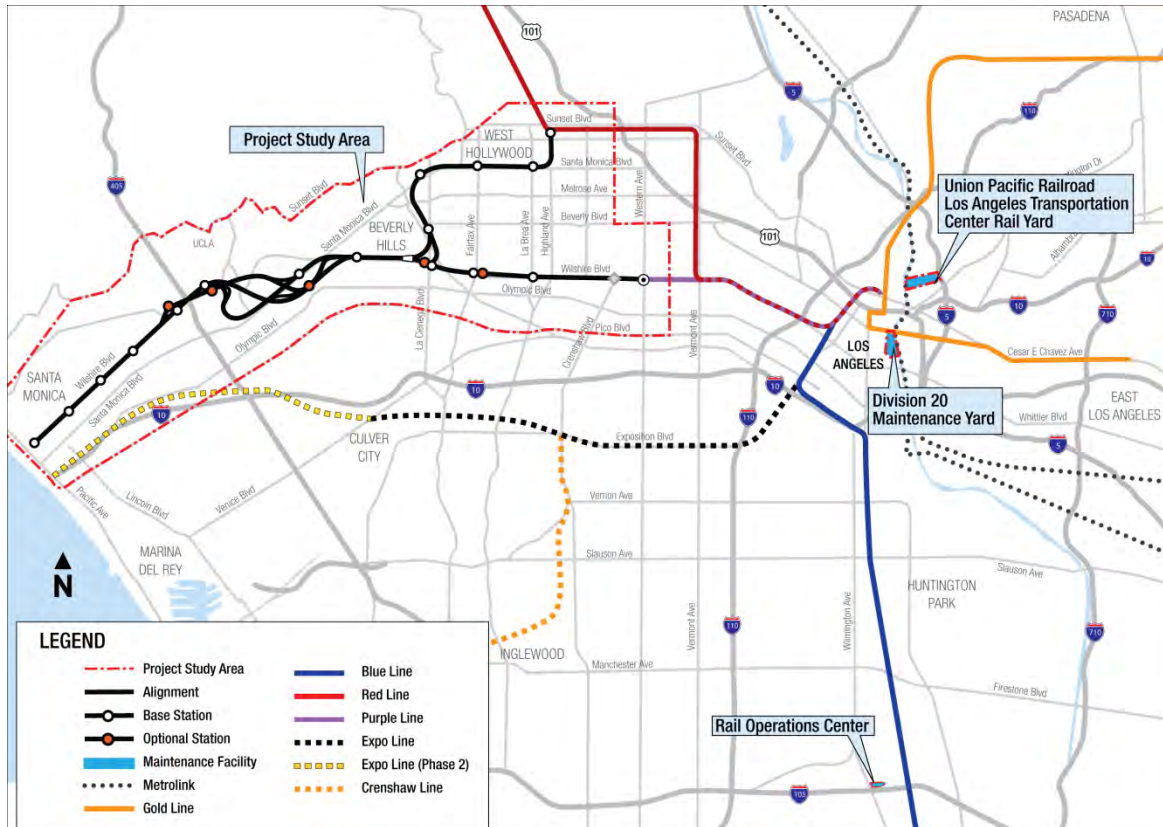


Figure 2-13: Location of the Rail Operations Center and Maintenance Yards

2.6.6 Maintenance Yards

If any of the Build Alternatives are chosen, additional storage capacity would be needed. Two options for providing this expanded capacity are as follows:

- The first option requires purchasing 3.9 acres of vacant private property abutting the southern boundary of the Division 20 Maintenance and Storage Facility, which is located between the 4th and 6th Street Bridges. Additional maintenance and storage tracks would accommodate up to 102 vehicles, sufficient for Alternatives 1 and 2.
- The second option is a satellite facility at the Union Pacific (UP) Los Angeles Transportation Center Rail Yard. This site would be sufficient to accommodate the vehicle fleet for all five Build Alternatives. An additional 1.3 miles of yard lead tracks from the Division 20 Maintenance and Storage Facility and a new bridge over the Los Angeles River would be constructed to reach this yard (Figure 2-14 and Figure 2-15).

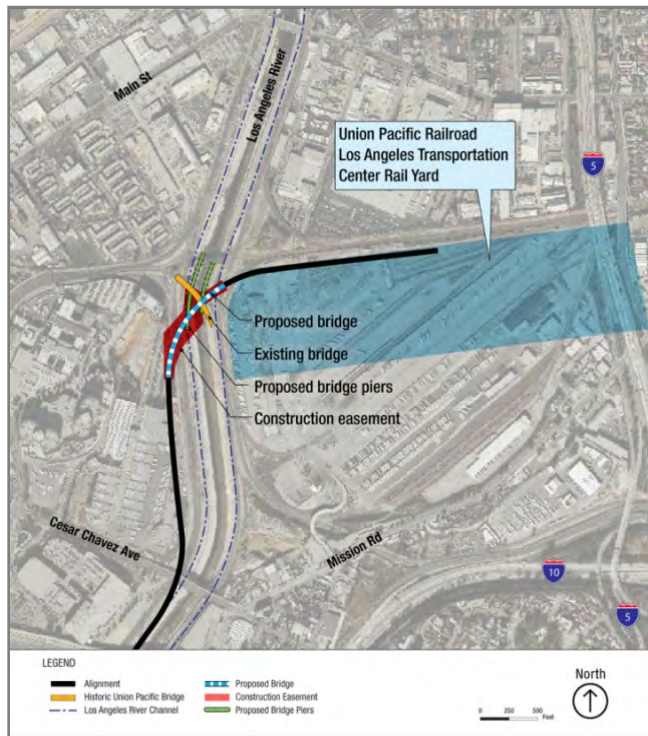


Figure 2-14. UP Railroad Rail Bridge

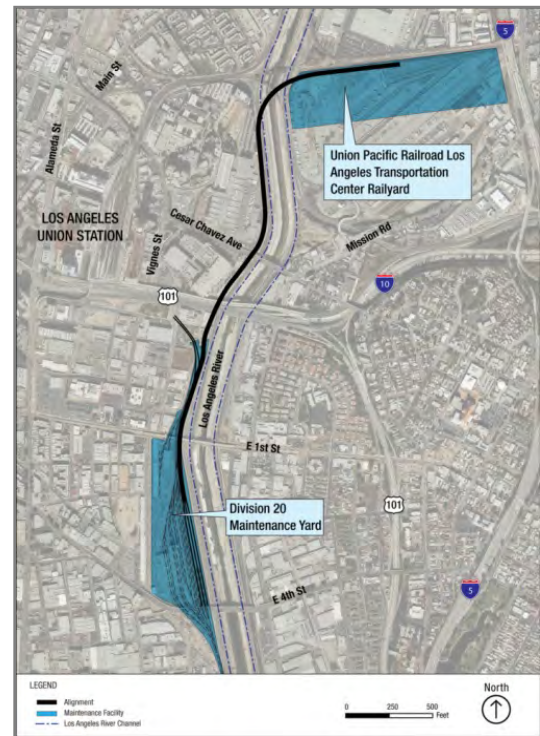


Figure 2-15. Maintenance Yard Options

2.7 Minimum Operable Segments

Due to funding constraints, it may be necessary to construct the Westside Subway Extension in shorter segments. A Minimum Operable Segment (MOS) is a phasing option that could be applied to any of the Build Alternatives.

2.7.1 MOS 1—Fairfax Extension

MOS 1 follows the same alignment as Alternative 1, but terminates at the Wilshire/Fairfax Station rather than extending to a Westwood/UCLA Station. A double crossover for MOS 1 is located on the west end of the Wilshire/La Brea Station box, west of Cloverdale Avenue. The alignment is 3.10 miles in length.

2.7.2 MOS 2—Century City Extension

MOS 2 follows the same alignment as Alternative 1, but terminates at a Century City Station rather than extending to a Westwood/UCLA Station. The alignment is 6.61 miles from the Wilshire/Western Station.



3.0 REGULATORY SETTING

This section provides a brief discussion of the federal, state, and local regulatory framework pertaining to the preservation and environmental protection of parklands and community facilities in each of the study area jurisdictions.

3.1 Federal Regulations

Section 4(f) of the USDOT Act of 1966 (recodified as amended at 49 USC Section 303) affords special protection to public recreational lands and facilities, including local parks and school facilities, that are open and available to the general public for recreational purposes, significant cultural resources, historical resources, and natural wildlife refuges. Federally-funded transportation improvement projects are prohibited from the encroachment (direct or constructive use, or a take) of Section 4(f) lands unless it can be demonstrated that no feasible and prudent alternative exists. Parks and recreational Section 4(f) lands within or adjacent to the corridor are discussed herein. A more detailed discussion of Section 4(f) properties related to historical resources, as well as parklands and recreational resources, is provided in the Draft Section 4(f) Technical Report.

Since 1966, Section 4(f) has undergone several changes. In August 2005, Section 6009(a) of the SAFETEA-LU, made the first substantive revision to Section 4(f) since the 1966 USDOT Act. Section 6009, which amended existing Section 4(f) legislation at both Title 49 USC Section 303 and Title 23 USC Section 138, simplified the process and approval of projects that have only de minimis impacts on lands impacted by Section 4(f). Under the new provisions, once the FTA determines that a transportation use of Section 4(f) property results in a de minimis impact, analysis of avoidance alternatives is not required and the Section 4(f) evaluation process is complete.

3.2 State Regulations

3.2.1 Parklands

The California Public Preservation Act of 1971 (California Public Resources Code §5400 et seq.) requires a public agency that acquires public parkland for non-park uses to either provide compensation sufficient enough to acquire substantially equivalent replacement parkland or provide replacement parkland of comparable qualities.

3.2.2 Educational Facilities

California Education Code (CEC). Each of the state school districts is subject to the regulations of the CEC and the governance of the California State Board of Education relative to funding, school curriculum, operations, and facilities (including location considerations).

3.2.3 Fire Services

California Code of Regulations (CCR) Title 24 of the California Building Standards Code (CBSC) is a compilation of building standards. State fire regulations set forth in Section 13000 et seq. of the California Health and Safety Code; include regulations for building standards (as also set forth in the CBSC), fire protection and notification systems, fire protection devices, such as extinguishers and smoke alarms, high-rise building and



childcare facility standards, and fire suppression training. In the case where there is no local fire authority, and in all state-owned and state-occupied facilities, the California State Fire Marshall has full enforcement jurisdiction of state fire regulations.

3.3 Local Regulations

Parklands, public services (i.e., police and fire protection), libraries, and other community facilities (i.e., educational facilities) are generally regulated by local agencies. Therefore, these components and the project alternatives are regulated primarily by the policies and agencies of the Cities of Los Angeles, Beverly Hills, West Hollywood, Santa Monica, and Los Angeles County. In addition, public schools within 0.25-mile of either side of the project alignments, stations, and maintenance and operations facility sites, are within various school districts which have their own policies and procedures. Specific policies that pertain to other community facilities are regulated through land use and zoning (refer to the Draft Land Use and Development Opportunities Report). The following is a summary of many of the regulations for parklands and community facilities outlined in the County of Los Angeles General Plan, as well as in the General Plans of the following cities within the study area.

3.3.1 City of Los Angeles

Applicable policies from the City of Los Angeles General Plan² include policies from the Wilshire Community Plan³ and the Westwood Community Plan.⁴

3.3.1.1 Wilshire Community Plan

The Wilshire Community Plan sets forth planning goals, objectives, policies, and programs that pertain to the Wilshire Community. The plan area is bounded by Melrose Avenue and Rosewood Avenue to the north; 18th Street, Venice Boulevard and Pico Boulevard to the south; Hoover Street to the east; and the Cities of West Hollywood and Beverly Hills to the west. Applicable policies from the Wilshire Community Plan⁵ include:

- 2-2.2—Encourage large mixed use projects to incorporate facilities beneficial to the community such as libraries, child care facilities, community meeting rooms, senior centers, police sub-stations, and/or other appropriate human service facilities as part of the project.
- 4-1.1—Preserve and improve the existing recreational facilities and park spaces.
- 4-4—Expand and improve Neighborhood, Community, and Regional Parks, and Recreation Centers and Senior Citizen Centers throughout the Wilshire Community Plan Area on an accelerated basis, as funds and land become available.
- 7-1.1—Support construction of new libraries and rehabilitation and expansion of existing libraries.
- 8-1.1—Consult with the LAPD in the review of development projects and land use changes to determine law enforcement needs and requirements.

²<http://cityplanning.lacity.org/cwd/framwk/chapters/09/09.htm>

³<http://cityplanning.lacity.org/complan/pdf/wilcptxt.pdf>

⁴<http://cityplanning.lacity.org/complan/pdf/wwdcptxt.pdf>

⁵<http://cityplanning.lacity.org/complan/pdf/wilcptxt.pdf>



- 9-1.1—Coordinate with the City of Los Angeles Fire Department during the review of significant development projects and General Plan amendments affecting land use to determine the impacts on service demands.

3.3.1.2 Westwood Community Plan

The Community area is generally bounded by Sunset Boulevard and the Bel Air Community on the north; the City of Beverly Hills on the east; Santa Monica Boulevard and the West Los Angeles Community on the south; and the Veterans Affairs property, the Brentwood-Pacific Palisades Community and Sepulveda Boulevard on the west. Sited within the Community’s boundaries are some significant uses including the University of California at Los Angeles (UCLA), Westwood Village, the Los Angeles Country Club, and the Mormon Temple. Adjoining the Plan area is the Veterans Affairs facility located on unincorporated Los Angeles County land. The applicable policy from the Westwood Community Plan⁶ includes:

- 6-1.1—Support construction of a new library at an appropriate location as needed in the Community.

3.3.2 City of Beverly Hills

Applicable policies from the City of Beverly Hills Draft General Plan⁷ include:

- LU 2.2—Public Streetscapes and Landscape—Maintain the quality and health of the “green infrastructure” that contributes to Beverly Hills identity and quality of life including its street tree canopy, landscaped parkways, parks, and open spaces, while seeking to conserve water resources.
- LU 8.5—Complete Neighborhoods—Maintain, improve, and, where necessary, expand parklands and community facilities to serve and provide easy access to Beverly Hills’ neighborhoods.
- LU 17.5—Expansion of Existing Facilities—Consider opportunities for the expansion of existing and development of new parklands, recreational facilities, schools, lifelong learning, cultural, and other public and quasi-public facilities provided that such improvements are cohesively integrated with, complement, and are compatible with existing development and adjoining land uses.
- LU 17.8—Care Facilities—Encourage the development of senior daycare facilities, assisted living facilities, hospice, child care, and other care facilities in appropriate areas throughout the City.
- LU 17.9—Assembly Facilities—Encourage and support the development of assembly facilities for social, cultural, educational, and religious organizations in appropriate locations of the City.
- LU 17.10—Parks and Open Spaces—Seek to expand the City’s parklands, greenways, and open spaces as vacant lands are available or existing buildings are demolished, considering alternative prototypes and standards for park development in urban areas and where limited land may be available.

⁶<http://cityplanning.lacity.org/complan/pdf/wwdcp.txt.pdf>

⁷http://www.beverlyhills.org/services/planning_division/plan/2008_draft_general_plan.asp



- PR 1.7—Recreational Parkland Replacement—Protect parkland from non-recreational uses that result in loss of acreage used for recreational purposes; any loss of park land shall be replaced with acreage suitable for comparable uses so that the City’s current park land acreage is not decreased.
- S3—Existing and New Development—All existing and new development/redevelopment address the provision of fire protection in a proactive and preventative manner.
- S 3.3—Fire Protection Services—Require that new development and redevelopment of structures provide adequate fire safety features such as fire sprinkler systems, when required, and responder access so as not to cause a reduction of fire protection services below acceptable, safe levels.

3.3.3 City of West Hollywood

Applicable policies from the City of West Hollywood General Plan⁸ include:

- 1.7.1—Allow for the continuation of public recreational, cultural (libraries, museums, etc.), educational, institutional (governmental, sheriff, fire, etc.), and religious uses at their present locations and development of new uses where they complement and are compatible with abutting land uses.
- 1.8.1—Encourage the development of uses which provide for the social and health needs of the residents [day care centers (children, seniors, physically impaired, other), social service providers, medical facilities, etc.] throughout the city, provided that they are compatible with adjacent land uses.
- 9.1.1—Increase the amount of parklands in the City, improving the standards of park space per resident through public and private acquisitions and improvements.
- 9.1.2—Preserve existing park space and recreational facilities, especially open turfed areas and trees, while allowing for the redesign, reconfiguration, and replacement of existing spaces and facilities to increase their recreation potential and usability

3.3.4 City of Santa Monica

Applicable polices from the City of Santa Monica General Plan⁹ include:

- LU 7—Hospital Area—Support the continued vitality of the City’s hospitals to meet the healthcare needs of the City and the larger region, and implement strategies to reduce vehicle trips.
- LU 17.5—Access for All Residents—Encourage access to open space for all residents through expansion of the larger open space system with the ultimate goal of providing open and recreational spaces within a ¼ mile radius of all residences in the city.
- CE1—Expand the amount, quality, diversity and inter-connectivity of parks, open spaces and recreational facilities throughout the city.

⁸City of West Hollywood. 2004. General Plan, Section 1.0 Land Use and Urban Design; Section 2.0 Public Open Space Urban Design; Section 7.0 Education and Cultural; Section 8.0 Public Safety: Police and Fire; Section 9.0 Parks and Recreation.

⁹<http://www.shapethefuture2025.net/>.



- CE1.2—Consider the use of City-owned lands and acquired additional properties to create new parkland throughout the City, exploring possible code modifications if necessary.
- CE1.8—Seek to improve and expand sports and recreational facilities throughout the City.
- CE1.9—Continue to maintain a diverse range of recreational facilities, offering residents of all ages affordable and safe access to high quality recreational opportunities.
- CE6.3—Encourage a range of medical uses that serve all segments of the community, including assisted living facilities, to locate in the City particularly in the Healthcare District.
- CE9.1—Support the development of high quality child care and early education facilities and small and large family child care in homes to meet the needs of those who work or live in Santa Monica.
- CE9.2—Encourage the provision of child care and early education facilities as a community benefit in new development above the base, and encourage these facilities near transit centers.
- CE11.1—Support inclusion of senior services in new development above the base throughout the City and particularly in activity centers along the boulevards and near transit.
- CE 14.1—Encourage and support efforts to increase transit ridership, walking and bicycling to educational facilities, reducing vehicle trips.
- CE16.4—Continue to improve library facilities, including the planning and development of a library in the Pico neighborhood area.
- OS 1.1—Preserve existing public open space.

3.3.5 Los Angeles County

Applicable policies from the Los Angeles County Draft General Plan¹⁰ include:

- C/OS 1.1—Promote the preservation of open space areas throughout the County.
- C/OS 1.2—Support the acquisition of new open space areas throughout the County.
- C/OS 2.1—Develop and expand regional and local parkland in the County.
- C/OS 2.2—Require new development to dedicate and improve parkland, as allowed by the Quimby Act. School grounds cannot be calculated as new park acreage.
- C/OS 3.1—Participate in a collaborative, inter-jurisdictional system that manages and preserves County open spaces.
- C/OS 3.2—Promote joint-use agreements to increase and enhance park and recreation opportunities.
- PS 7.4—All projects must comply with Los Angeles County Fire Department requirements, including access, water mains, fire flows, and hydrants.

¹⁰<http://planning.lacounty.gov/generalplan#anc-download>



- PS 9.1—Ensure a desired level of educational facilities through land use and facility planning.
- PS 9.2—Encourage the shared use of sites for development of schools, parks, libraries, housing, and other compatible uses.
- PS 10.1—Ensure a desired level of library service through coordinated land use and facility planning.



4.0 AFFECTED ENVIRONMENT

An inventory of parklands and other community facilities within the study area is provided in this section based on information provided in previous environmental documents, available maps and reports, direct contact with affected jurisdictions (see references), the land use (parklands, schools), community and neighborhood impacts, safety and security (police and fire), and Section 4(f) Technical Reports for this project. Data was collected from the General Plans and websites for the Cities of Los Angeles¹¹, West Hollywood¹², Beverly Hills¹³, Santa Monica¹⁴, as well as portions of unincorporated Los Angeles County¹⁵. In addition, spatial data and aerial maps were used to identify parklands and community facilities within the study area.

The overall project study area is located in western Los Angeles County and encompasses approximately 38 square miles. The study area is east-west oriented and includes portions of five jurisdictions: the Cities of Los Angeles, West Hollywood, Beverly Hills, Santa Monica, as well as portions of unincorporated Los Angeles County. The boundaries of the study area generally extend north to the base of the Santa Monica Mountains along Hollywood, Sunset and San Vicente Boulevards, east to the Metro Rail stations at Wilshire/Western and Hollywood/Highland, south to Pico Boulevard, and west to the Pacific Ocean.

The following is a discussion of the existing parks and community facilities. Parks and community facilities were inventoried within 0.5-mile on either side of the Build Alternative alignments (alignments) and those within 0.25-mile on either side of the alignments were further assessed to determine if any of the facilities would be directly or indirectly impacted by the proposed Build Alternatives. The inventory is shown on Figure 4-1 through Figure 4-5.

4.1 Parklands

Of the 16 parks and recreation facilities within 0.25-mile of the alignments, six are immediately adjacent to the alignments and are as follows:

- Hancock Park (Alternatives 1 through 5, MOS 1,2)
- Los Angeles Country Club (Alternatives 1 through 5 with Option 4 via Santa Monica)
- Douglas Park (Alternatives 3, 5)
- Reed Park (Alternatives 3, 5)
- Plummer Park (Alternatives 4, 5)
- West Hollywood Park (Alternatives 4, 5)

¹¹ <http://cityplanning.lacity.org>

¹² City of West Hollywood. 2004. General Plan, Section 1.0 Land Use and Urban Design; Section 2.0 Public Open Space Urban Design; Section 7.0 Education and Cultural; Section 8.0 Public Safety: Police and Fire; Section 9.0 Parks and Recreation.

¹³ <http://www.beverlyhills.org>

¹⁴ <http://www.shapethefuture2025.net>

¹⁵ <http://planning.lacounty.gov>



4.2 Police Services

One police facility is within 0.25-mile of the alignments and immediately adjacent: the Los Angeles County Sheriff's Department West Hollywood Station (Alternatives 4, 5).

Per personal communication with staff at the Los Angeles County Sheriff's Department—West Hollywood Station,¹⁶ typical response times are measured by following the "720 Rule" meaning that for calls the department deems priority calls, response times are no longer than 7 minutes, and for call the department deems routine calls, response times are no longer than 20 minutes. However, emergency calls are responded to between 30 seconds and 2 minutes. Per personal communication with staff at the at the Beverly Hills Police Department,¹⁷ typical response times for what the department deems emergency calls are usually within 3 minutes. All other calls are responded to usually within 20 minutes. Personal communication with appropriate personnel at the Los Angeles Police Department located at 1358 Wilcox Avenue was attempted but no response was given. Therefore, response times for this police station were not obtained.

As indicated by the staff at the Los Angeles County Sheriff's Department and Beverly Hills Police Department, major road construction and/or road closures are made available to each station in advance. Therefore, if needed, alternate routes are taken to avoid major delays in response times.

4.3 Fire Services

Five fire stations are located within 0.25-mile of the alignments of which two are immediately adjacent to the alignments: the City of Los Angeles Fire Department Station 29 (Alternatives 1 through 5, MOS 1, 2) and Los Angeles County Fire Department Station 8 (Alternatives 4, 5).

Typical response times at these fire stations are generally between 2 minutes and 5 minutes to any point within each respective jurisdiction, depending on traffic conditions. As indicated by each Captain (see references), major road construction and/or road closures are made available to each station in advance. Therefore, if needed, alternate routes are taken to avoid major delays in response times.

¹⁶Personal communication between Glenn DeBerg and Sergeant Bowman at 1:25 pm on 04/09/10.

¹⁷Personal communication between Glenn DeBerg and Commander Goldman at 1:45 pm on 04/09/10.

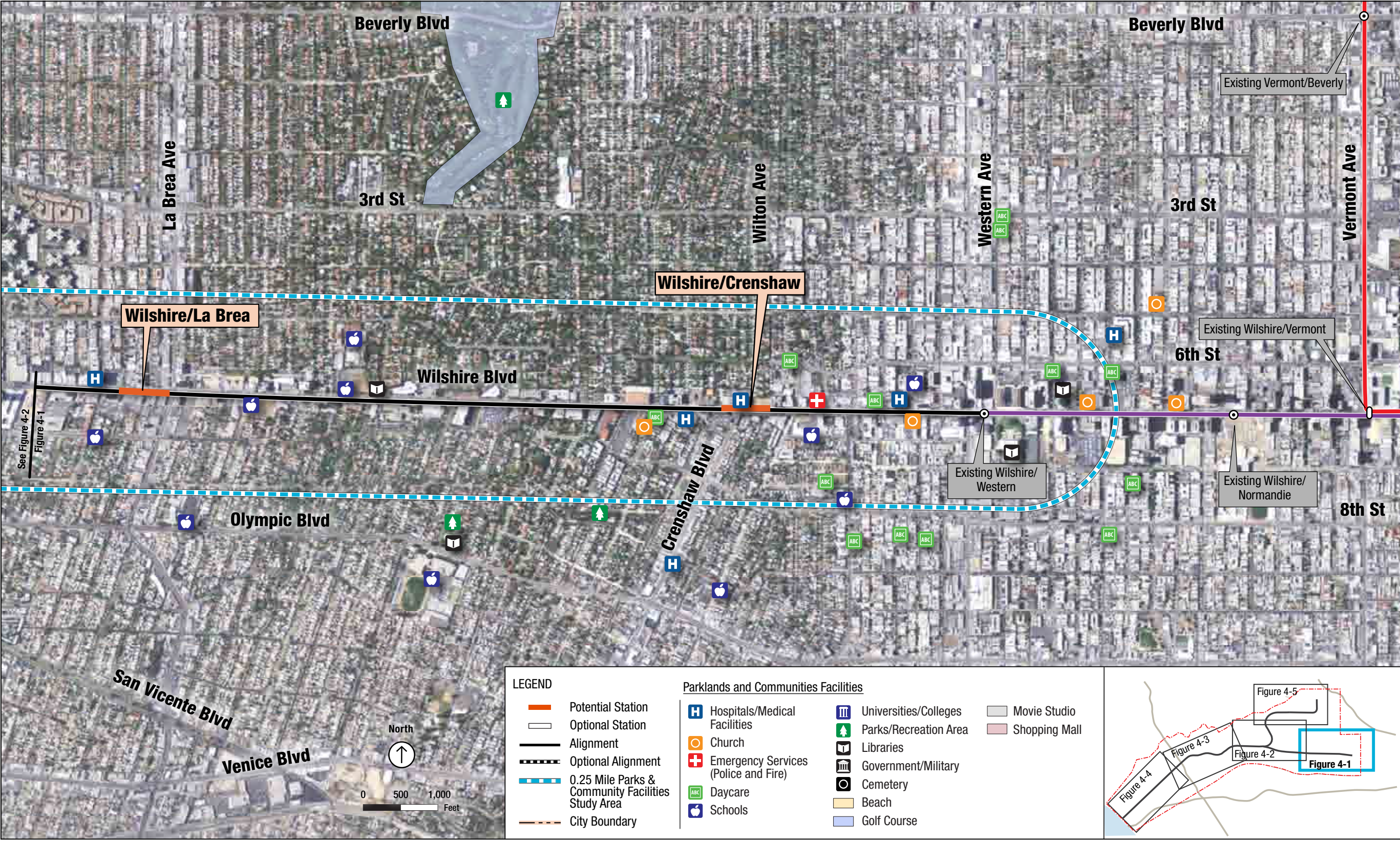


Figure 4-1. Final Parklands and Other Facilities (Wilshire/Crenshaw Station to Wilshire La Brea Station)

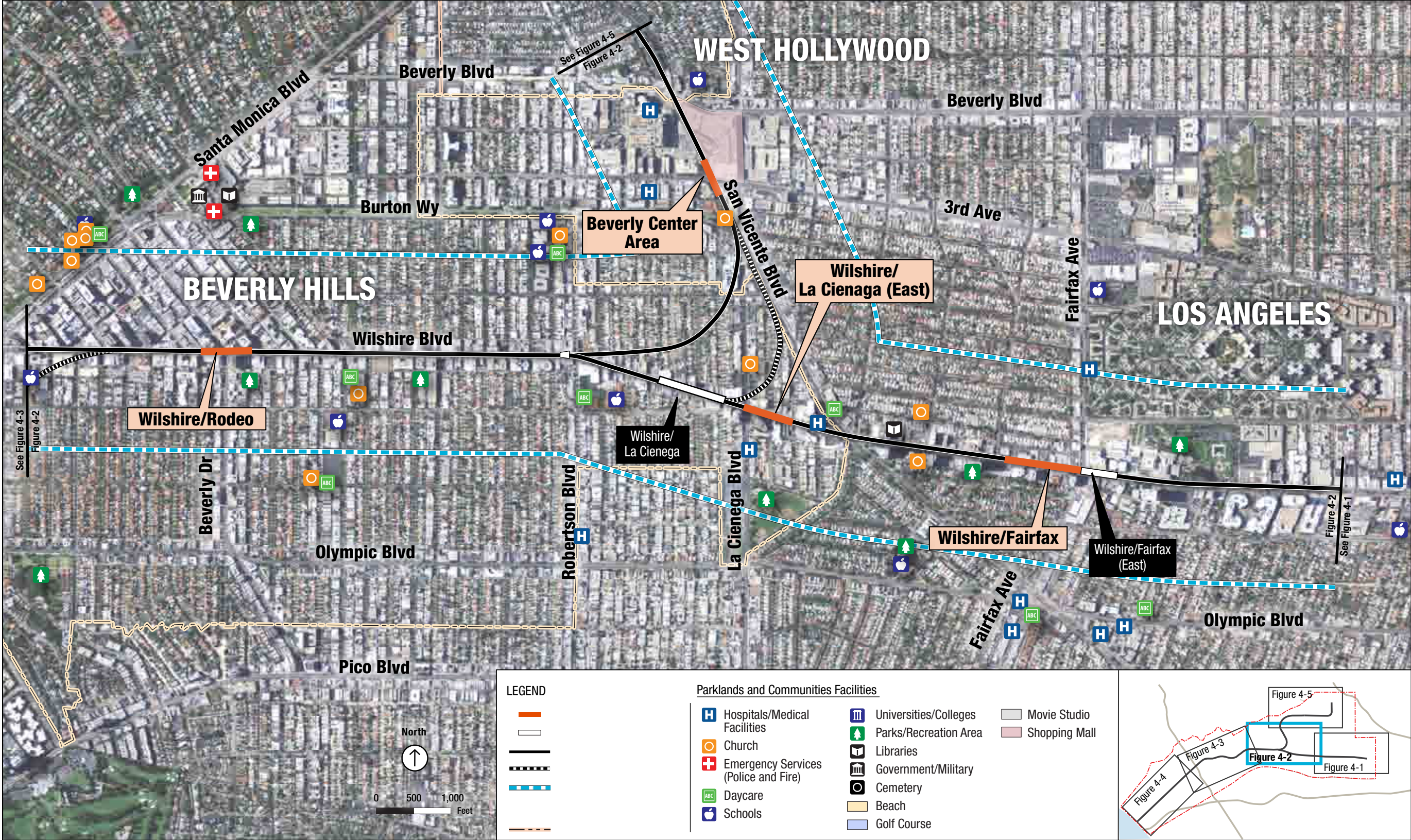


Figure 4-2. Final Parklands and Other Facilities (Wilshire/Fairfax Station to Wilshire/Rodeo Station)

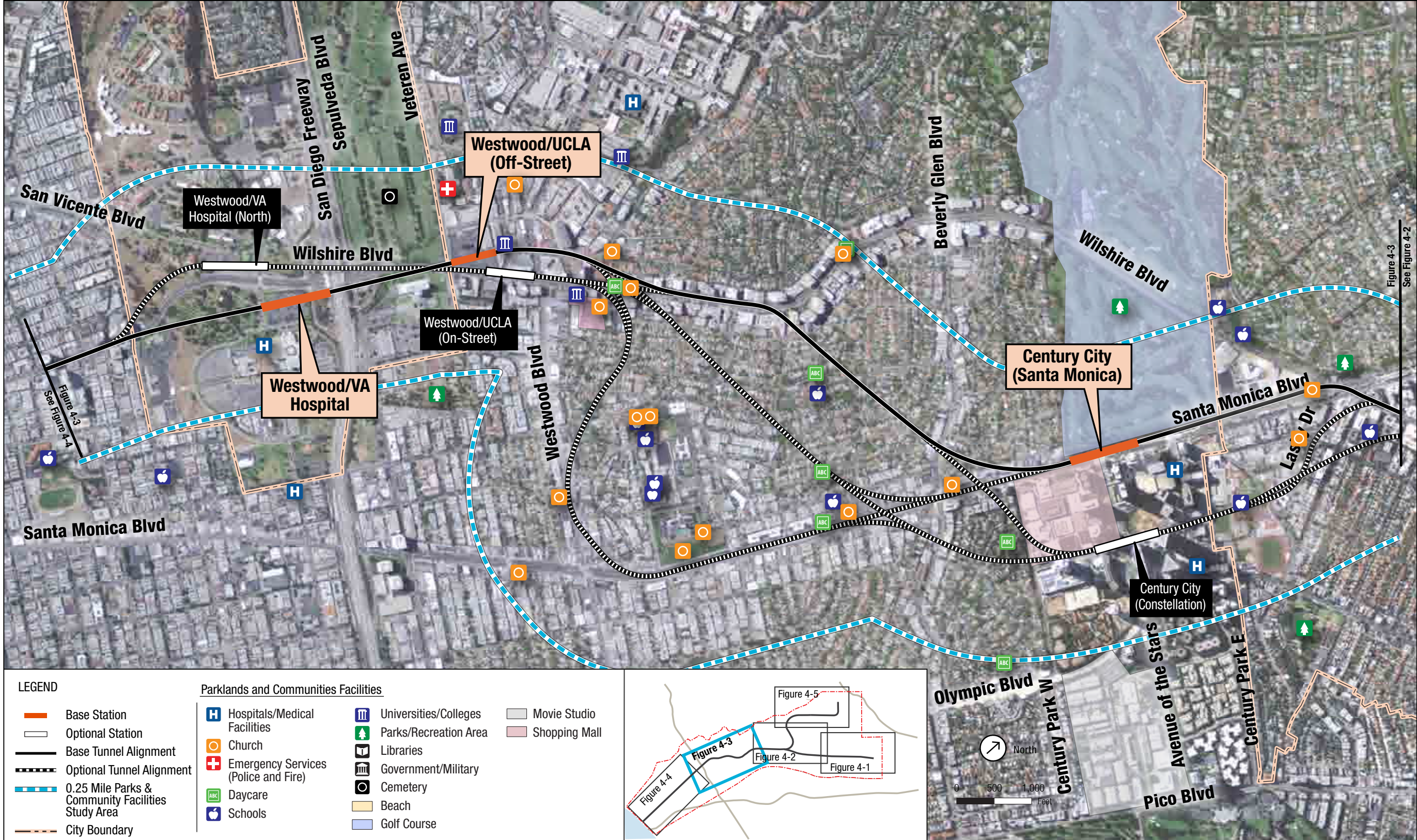


Figure 4-3. Final Parklands and Other Facilities (Century City Station to Westwood/VA Hospital Station)

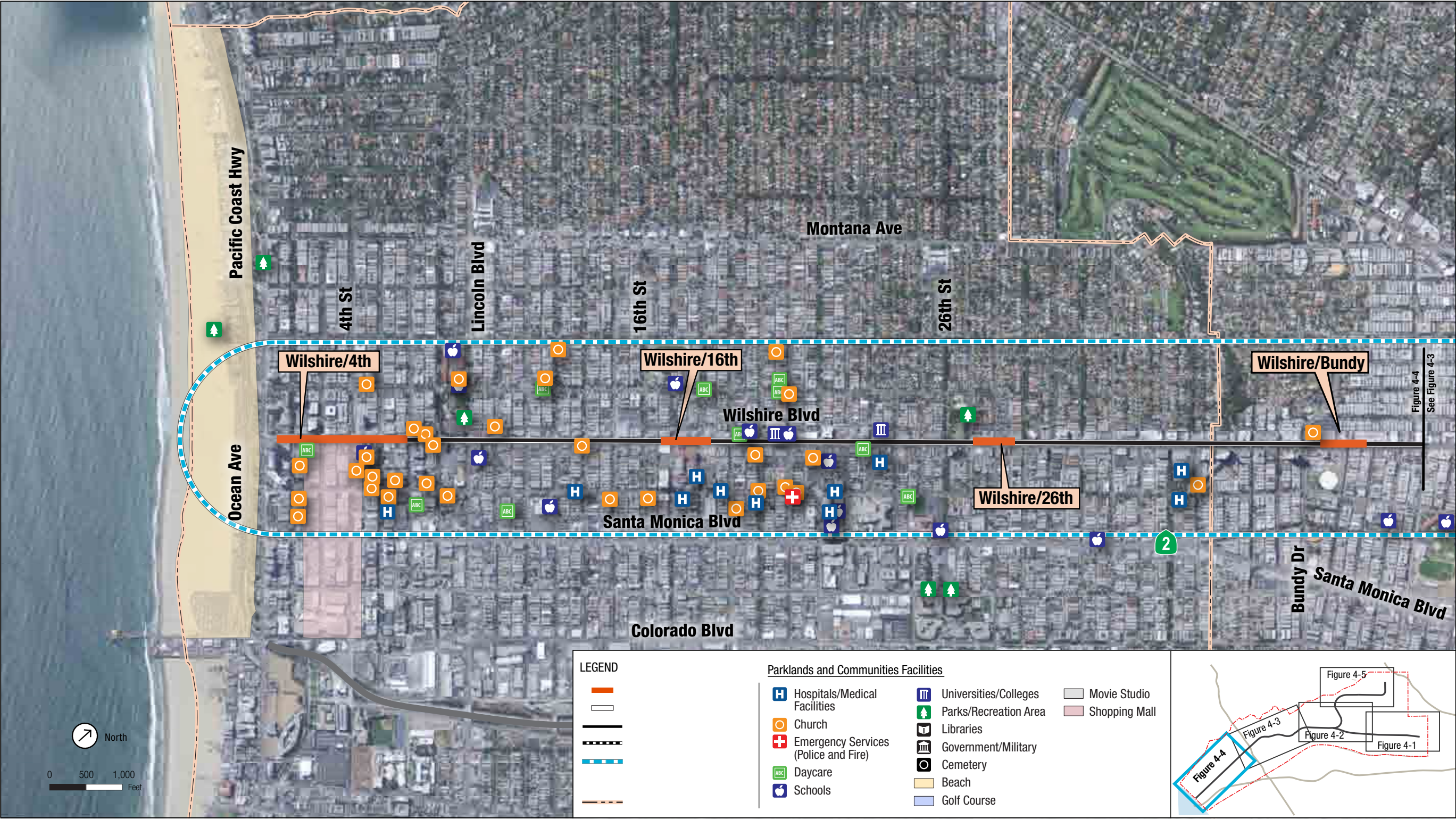


Figure 4-4. Final Parklands and Other Facilities (Wilshire/Bundy Station to Wilshire/4th Station)



Figure 4-6. Final Parklands and Other Facilities (Hollywood/Highlands Station to Santa Monica/San Vicente Station)

WESTSIDE SUBWAY EXTENSION



4.4 Schools (Public and Private, All Levels of Education including Pre-school through Trade and College)

Eighty-two schools are located within 0.25-mile of the alignments. Twelve are immediately adjacent to the alignments as follows:

- Pre-school
 - ▶ Cassidy Pre-school (Alternatives 3,5)
 - ▶ Pilgrim Lutheran Pre-school (Alternatives 3,5)
 - ▶ Evergreen Child Care (Alternatives 1 through 5, MOS 1, 2)
 - ▶ Beverly Hills Montessori School (Alternatives 4,5)
 - ▶ L’Chaim Daycare (Alternatives 4,5)
 - ▶ Creative Center Pre-school (Alternatives 3, 5 with Option 4 via East Route)
- High Schools
 - ▶ Beverly Hills High School (Alternatives 1 through 5, MOS 2)
- Private Schools
 - ▶ St. James Episcopal School (Alternatives 1 through 5, MOS 1, 2)
 - ▶ New Los Angeles Charter School (Alternatives 1 through 5, MOS 1, 2)
 - ▶ Concord High School (Alternatives 3, 5)
- University or Trade Schools
 - ▶ University of California at Los Angeles (UCLA) (Alternatives 1 through 5)
 - ▶ University of Santa Monica (Alternatives 3,5)
 - ▶ The Chicago School of Professional Psychology—Westwood Campus (Alternatives 1 through 5 with Westwood/UCLA off-Street Station)
 - ▶ Emperor’s College of Traditional Oriental Medicine (Alternatives 3,5)
 - ▶ Concord Law School (Alternatives 1 through 5)

4.5 Libraries

Four libraries are located within 0.25-mile of the alignments. One is immediately adjacent to the alignment: Jewish Community Library of Los Angeles (Alternatives 1 through 5, MOS 2).

4.6 Medical Facilities (hospitals and health centers)

Four hospitals and health centers are located within 0.25-mile of the alignments. Of these, three are immediately adjacent to an alignment.

- Cedars Sinai Medical Center (Alternatives 1 through 5)
- Veterans Affairs West Los Angeles Healthcare Center (Alternatives 2 through 5)
- Santa Monica UCLA Medical Center & Orthopedic Hospital (Alternatives 3, 5)



4.7 Religious Institutions

Eighty-seven religious facilities are located within 0.25-mile of the alignments. Twenty-six are immediately adjacent to an alignment as follows:

- Church of Saint Augustine By the Sea (Alternatives 4, 5)
- Nichiren Shoshu of America Temple (Alternatives 4, 5)
- Pilgrim Lutheran Church (Alternatives 4, 5)
- Wilshire United Methodist Church (Alternatives 1 through 5, MOS 1, 2)
- Saint James Episcopal Church (Alternatives 1 through 5, MOS 1, 2)
- Westwood Presbyterian Church (Alternatives 1 through 5)
- Soka Gakkai International (Alternatives 4, 5)
- Living Torah Center (Alternatives 4, 5)
- Kahal Joseph Congregation (Alternatives 1 through 5 with Option 4 via Central and West Routes)
- Oasis Christian Church (Alternatives 1 through 5, MOS 1, 2)
- Wilshire Boulevard Temple (Alternatives 1 through 5, MOS 1, 2)
- Grace Christian Church (Alternatives 1 through 5, MOS 1, 2)
- University Bible Church (Alternatives 1 through 5)
- Los Angeles Church of Religious Science (Alternatives 1 through 5, MOS 2)
- Korean Catholic Renewal Movement (Alternatives 1 through 5, MOS 1, 2)
- Ku In Holy Presbyterian Church (Alternatives 1 through 5, MOS 1, 2)
- LA Jesus Village Church (Alternatives 1 through 5, MOS 1, 2)
- Church of God Word (Alternatives 1 through 5, MOS 1, 2)
- California Calvary Church (Alternatives 1 through 5, MOS 1, 2)
- Ha Na Korean Wesleyan Church (Alternatives 1 through 5, MOS 1, 2)
- Song One Church (Alternatives 1 through 5, MOS 1, 2)
- The Church of Joy (Alternatives 1 through 5, MOS 1, 2)
- New Life (Alternatives 1 through 5, MOS 1, 2)
- Los Angeles International Church of Christ (Alternatives 1 through 5, MOS 1, 2)
- Vision Full Gospel (Alternatives 1 through 5, MOS 1, 2)
- Our Lady of Mt Lebanon (Alternatives 4, 5)



4.8 Cemeteries

Two cemeteries are located within 0.25-mile of the alignments: the Los Angeles National Cemetery (Alternatives 2 through 5) and Pierce Brothers Cemetery (Alternatives 1 through 5, MOS 1, 2) in West Los Angeles. These cemeteries are immediately adjacent to the alignment.

4.9 Social Services (Adult Day Care, Senior Centers, Convalescent)

Twenty-four day care and senior centers are located within 0.25-mile of the alignments. Of these, six are immediately adjacent to an alignment as follows:

- Carmelite Elder Care Management (Alternatives 1 through 5, MOS 2)
- Comfort Keepers (Alternatives 1 through 5, MOS 1, 2)
- Impact Clinical Trials (Adult Daycare) (Alternatives 1 through 5, MOS 1, 2)
- Family Home Healthcare (Alternatives 1 through 5, MOS 1, 2)
- Wilshire Adult Day Healthcare (Alternatives 1 through 5, MOS 1, 2)
- Partners Adult Day Health Center (Alternatives 4, 5)

Table 4-1. Summary of the Number of Parklands and Community Facilities within 0.25-mile of the Westside Corridor¹⁸

Facility	Project Alternatives				
	Alt. 1— Westwood/ UCLA Extension	Alt. 2— Westwood/VA Hospital Extension	Alt. 3—Santa Monica Extension	Alt. 4— Westwood/VA Hospital Extension plus West Hollywood Extension	Alt. 5—Santa Monica Extension plus West Hollywood Extension
Parklands and Other Recreation	5	6	10	12	16
Police Services	0	0	0	1	1
Fire Services	2	2	3	4	5
Public Elementary Schools	6	6	8	7	9
Public Middle Schools	2	2	3	2	3
Public High Schools	1	1	3	2	4
Colleges, Universities & Trade Schools	5	5	6	5	6
Private Schools	7	7	17	14	24
Libraries	2	2	3	3	4
Religious Facilities	48	48	80	59	87
Hospitals	0	1	3	2	4
Convalescent	8	8	18	14	24
Cemeteries	1	2	2	2	2
Day-Care and Pre-School	14	14	24	27	37

Beverly Hills Police Department and Los Angeles Police Department stations are not within 0.25-mile of the project and are therefore not included in this table; however, these departments serve the project area.

¹⁸ See Tables 4-2 and 4-3 for facilities within 0.25 miles on either side of MOS alignments



Table 4-2. Parklands and Recreation Resources within 0.25-mile of the Westside Corridor

Sheet No., ID No.	Name	Type of Facility	Approx. Size (acres)	Location	Regulatory Agency	Proximity to Alignment (miles)
1, 189	Santa Monica State Beach	Beach	179.98	Pacific Coast Highway & Santa Monica Boulevard (Santa Monica)	California State Parks. Operated by the City of Santa Monica	.04
5, 174	Yucca Park	Park	0.90	North Las Palmas Avenue & Yucca Street (Los Angeles)	City of Los Angeles	.19
5, 175	De Longpre Park	Park	3.45	De Longpre Avenue & North Cherokee Avenue (Los Angeles)	City of Los Angeles	.19
5, 176	Plummer Park	Park	15.49	Fountain Avenue & North Vista Street (West Hollywood)	City of West Hollywood	.00
5, 177	Kings Road Park	Park	0.90	North Kings Road & Romaine Street (West Hollywood)	City of West Hollywood	.10
5, 179	West Hollywood Park	Park	8.70	Santa Monica Boulevard & North San Vicente Boulevard (West Hollywood)	City of West Hollywood	.00
3, 180	Beverly Gardens Park	Park	67.96	Wilshire Boulevard & Santa Monica Boulevard (Beverly Hills)	City of Beverly Hills	.00
3, 182	Oakhurst Park	Park	0.70	Wilshire Boulevard & Oakhurst Drive (Beverly Hills)	City of Beverly Hills	.04
2, 183	Hancock Park	Park	27.20	West 6 th Street & Curson Avenue (Mid-Wilshire, LA County)	County of Los Angeles. Maintained and operated by the County Department of Museum of Natural History	.00
2, 185	La Cienega Park	Park	22.40	Gregory Way & La Cienega Boulevard (Beverly Hills)	City of Beverly Hills	.16
2, 186	Westwood Park	Park	20.06	Wilshire Boulevard & South Sepulveda Boulevard (Los Angeles)	City of Los Angeles	.21
1, 187	Douglas Park	Park	4.5	Wilshire Boulevard & Chelsea Avenue (Santa Monica)	City of Santa Monica	.00
1, 188	Palisades Park	Park	26.04	Ocean Avenue & Santa Monica Boulevard	City of Santa Monica	.10
1, 190	Reed Park	Park	5.3	Wilshire Boulevard & 7 th Street (Santa Monica)	City of Santa Monica	.00
5, 178	Poinsettia Recreation Center	Recreation Center	6.76	North Poinsettia Place & Willoughby Avenue (Hollywood/Los Angeles)	City of Los Angeles	.12
2, 181	Los Angeles Country Club	Golf Course	16	Wilshire Boulevard & Comstock Avenue (Los Angeles)	Private Country Club	.00



Table 4-3. Public Services Within 0.25-mile of the Westside Corridor

Sheet No., ID No.	Station	Address	Area of Project Served	Proximity to Alignment (miles)
Police Services				
5, 171	Los Angeles County Sheriff's Department—West Hollywood Station	780 North San Vicente Boulevard, West Hollywood	West Hollywood	.00
Fire Services				
4, 108	City of Los Angeles Fire Department Station 29	4029 Wilshire Boulevard, Los Angeles	Wilshire Center and Hancock Park	.00
1, 43	Santa Monica Fire Department Fire Stations 3 & 4	1302 19 th Street, Santa Monica Boulevard	City of Santa Monica	.18
5, 137	Los Angeles County Fire Department Station 8	7643 Santa Monica Boulevard, West Hollywood	Unincorporated Los Angeles and West Hollywood	.00
5, 168	Los Angeles County Fire Department Station 7	864 San Vicente Boulevard, West Hollywood	Unincorporated Los Angeles and West Hollywood	.13
2, 63	Los Angeles Fire Department Station 37	1090 Veteran Avenue, Los Angeles, CA 90024	Westwood and the Western UCLA Campus	.18
Libraries				
5, 120	Los Angeles Public Library—West Hollywood Branch	715 North San Vicente Boulevard, Los Angeles, CA 90069	City of West Hollywood	.00
4, 112	Pio Pico Koreatown Branch Library	694 South Oxford Avenue, Los Angeles, CA 90005	City of Los Angeles (Mid-Wilshire Area)	.11
1, 13	Santa Monica Public Library	601 Santa Monica Boulevard, Santa Monica, CA 90401	City of Santa Monica	.23
3, 92	Jewish Community Library of Los Angeles—Peter M. Kahn Memorial	6505 Wilshire Boulevard, Los Angeles, CA 90036	County of Los Angeles	.00



Table 4-4. Other Community Facilities within 0.25-mile of the Westside Corridor

Sheet No., ID No.	Name	Location	Proximity to Alignment (miles)
Educational Facilities			
Day Care and Pre-Schools			
1, 37	Beth Shir Sholom Early Childhood Center (Pre-school)	1827 California Ave. Santa Monica, CA 90403	.13
1, 51	Cassidy Pre-school	2122 Wilshire Blvd. Santa Monica, CA 90403	.00
5, 132	Fountain Day School	1128 N Orange Grove Ave. West Hollywood, CA 90046	.04
5, 125	Holloway Pre-school	8510 Holloway Drive Los Angeles, CA 90069	.07
5, 145	Sunset Montessori Pre-school	1432 N Sycamore Ave Los Angeles, CA 90028	.22
5, 140	West Hollywood Pre-school	7377 Santa Monica Blvd. West Hollywood, CA 90046	.18
2, 76	Westwood United Methodist Pre-school	10497 Wilshire Blvd. Los Angeles CA 90024	.23
4, 167	Wilshire Pre-school	711 S. Plymouth Blvd. Los Angeles, CA 90005	.02
1, 1	First Presbyterian Nursery	1220 2nd. St. Santa Monica, CA 90401	.03
1, 10	Santa Monica YMCA Child Development	1332 6th St. Santa Monica, CA 90401	.17
1, 19	Gan Israel Pre-School	1341 9th St. Santa Monica, CA 90401	.18
1, 20	Trinity Baptist Church Pre-School	1019 California Ave. Santa Monica, CA 90403	.13
1, 30	Lincoln Child Development	1532 California Ave. Santa Monica, CA 90403	.13
1, 32	Pilgrim Lutheran Pre-School	1730 Wilshire Blvd. Santa Monica, CA 90403	.00
1, 38	Garden of Angels Pre-School	1009 18th St. Santa Monica, CA 90403	.15
1, 53	Ulrich Daycare	1305 23rd. St. Santa Monica, CA 90404	.14
2, 72	Westwood Presbyterian School	10822 Wilshire Blvd. Los Angeles, CA 90024	.00
2, 73	Montessori Discovery Garden	10551 Holman Ave. Los Angeles, CA 90024	.23
2, 77	Century City Kids Club	1908 Fox Hills Dr. Los Angeles, CA 90025	.18
3, 84	Hebrew Nessah Nursery School	142 S. Rexford Dr. Beverly Hills, CA 90212	.07
3, 86	Gan Yaffa Pre-School	177 S. Robertson Blvd. Beverly Hills, CA 90211	.11
3, 90	Montessori Children's World	650 S. San Vicente Blvd. Beverly Hills, CA 90048	.05



Table 4-4. Other Community Facilities within 0.25-mile of the Westside Corridor (continued)

Sheet No., ID No.	Name	Location	Proximity to Alignment (miles)
4, 106	Wilton Place Children's Center	4030 Leeward Ave. Los Angeles, CA 90005	.19
4, 109	St. James Pre-School	4270 W. 6th St. Los Angeles, CA 90020	.12
4, 110	Evergreen Child Care	3960 Wilshire Blvd. Los Angeles, CA 90010	.00
4, 116	Wilshire Smiling Tree Pre-School and Kindergarten	611 S. Hobart Blvd. Los Angeles, CA 90005	.14
5, 123	West Hollywood Daycare Pre-School	723 Huntley Dr. West Hollywood, CA 90069	.18
5, 127	Laurel Children's Center	8023 Willoughby Ave. West Hollywood, CA 90046	.25
5, 129	ABC Little School: West Hollywood	927 N. Fairfax Ave. West Hollywood, CA 90046	.22
5, 130	Beverly Hills Montessori School	1105 N. Laurel Ave. West Hollywood, CA 90046	.00
5, 135	L' Chaim Daycare	7636 Santa Monica Blvd. West Hollywood, CA 90046	.00
5, 138	West Hollywood Children's Academy	1030 N. Vista St. West Hollywood, CA 90046	.10
5, 142	Gardner Little School	1226 N. Gardner St. West Hollywood, CA 90046	.17
5, 143	The Walther School	1246 N. Gardner St. West Hollywood, CA 90046	.20
5, 152	The Canyon Co-OP School	1820 N. Las Palmas Ave. Los Angeles, CA 90028	.24
2, 245	Creative Center Preschool	10547 Santa Monica Blvd. Los Angeles, CA 90025	.00
3, 247	Beverly Hills Presbyterian Pre-school	505 North Rodeo Drive Beverly Hills, CA 90210	.25
Elementary Schools			
3, 81	Beverly Vista Elementary School	Charleville Boulevard & South Rexford Drive	.19
1, 60	Brockton Avenue Elementary School	Brockton Avenue & Texas Avenue	.23
2, 74	Fairburn Avenue Elementary School	Fairburn Avenue & Rochester Avenue	.01
3, 87	Horace Mann Elementary School	South Hamel Drive & Charleville Boulevard	.09
5, 128	Laurel Elementary School	North Laurel Avenue & Willoughby Avenue	.22
4, 153	Los Angeles Elementary School	Ingraham Street & South Norton Avenue	.07
1, 54	McKinley Elementary School	Santa Monica Boulevard & 24th Street	.23
4, 107	Wilton Place Elementary School	South Wilton Place & West 8th Street	.23
2, 246	El Rodeo Elementary School	605 North Whittier Drive Beverly Hills, CA 90210	.25
Middle Schools			
4, 102	Burroughs Middle School	South McCadden Place between Wilshire Boulevard & West 6 th Street	.13
1, 26	Lincoln Middle School	California Avenue & 14 th Street	.17



Table 4-4. Other Community Facilities within 0.25-mile of the Westside Corridor (continued)

Sheet No., ID No.	Name	Location	Proximity to Alignment (miles)
2, 242	Ralph Waldo Emerson Middle School	1650 Selby Avenue Los Angeles, CA 90024	.20
Senior High Schools			
2, 79	Beverly Hills High School	Moreno Drive & Heath Avenue	.03
1, 23	Olympic High School	721 Ocean Park Blvd. Santa Monica, CA 90405	.18
5, 147	Hollywood Senior High School	North Highland Avenue & West Sunset Boulevard	.00
1, 61	University Senior High School	Texas Avenue & South Westgate Avenue	.21
Private Schools			
1, 18	Saint Monica Catholic High School	Washington Avenue & Lincoln Boulevard	.21
1, 156	Pacifica Christian High School	Lincoln Avenue & California Avenue	.03
1, 157	New Roads Middle School	Lincoln Avenue between Wilshire Boulevard & Arizona Avenue	.15
3, 95	Cathedral Chapel School	South Cochran Avenue & West 8 th Street	.13
5, 133	Saint Ambrose School	North Fairfax Avenue & Fountain Avenue	.16
4, 164	Saint James Episcopal School	Wilshire Boulevard & South St. Andrews Place	.00
1, 15	Saint Monica Parochial School	California Avenue & 7th Street	.17
1, 3	Delphi Academy of Santa Monica	4th Street between Wilshire Boulevard & Arizona Avenue	.04
5, 148	Blessed Sacrament School	On Sunset Boulevard between North Las Palmas Avenue & Cassil Place	.16
1, 49	Montessori School	West Sunset Boulevard between North Highland Avenue & North Cahuenga Boulevard	.18
2, 159	Good Shepherd Catholic School	South Linden Drive & Charleville Boulevard	.04
5, 144	Hollywood Schoolhouse	North Highland Avenue & Fountain Avenue	.00
3, 118	Maimonides Academy	Huntley Drive & Rosewood Avenue	.09
5, 160	Pacific Hills School	Holloway Drive between Hancock Avenue & Westmount Drive	.17
4, 161	Wilshire Private School	Wilshire Boulevard & South Longwood Avenue	.00
5, 154	Larchmont Charter School—West Hollywood	North Fairfax Avenue & Fountain Avenue	.20
4, 155	New Los Angeles Charter School	5100 Wilshire Boulevard, Los Angeles, CA 90036	.00
1, 237	Saint Monica Elementary School	1039 7th Street, Santa Monica, CA 90403	.15
1, 238	Concord High School	1831 Wilshire Boulevard Santa Monica, CA 90403	.00
1, 240	Lighthouse Christian Academy	1424 Yale Street Santa Monica, CA 90405	.25
1, 241	Lighthouse Church School	1220 20th Street Santa Monica, CA 90404	.04
2, 243	Saint Paul the Apostle School	1536 Selby Avenue Los Angeles, CA 90024	.12
5, 250	The Oaks School	6817 Franklin Ave. Los Angeles, CA 90028	.19
5, 251	Green School of Hollywood	1547 North McCadden Place Los Angeles, CA 90028	.05



Table 4-4. Other Community Facilities within 0.25-mile of the Westside Corridor (continued)

Sheet No., ID No.	Name	Location	Proximity to Alignment (miles)
College or Trade Schools			
2, 162	The Chicago School of Professional Psychology—Westwood Campus	Gayley Avenue & Lindbrook Drive	.00
1, 169	University of Santa Monica	Wilshire Boulevard & 21st Street	.00
2, 170	University of California Los Angeles (UCLA)	405 Hilgard Avenue, Los Angeles	.00
1, 239	Emperor’s College of Traditional Oriental Medicine	1807 Wilshire Blvd. Santa Monica, CA 90403	.00
2, 244	Concord Law School	10866 Wilshire Blvd Los Angeles, CA 90024	.00
1, 248	Cal America Education Institute	3700 Wilshire Boulevard, Los Angeles, CA 90010	.00
Religious Facilities			
3, 163	All Saints Episcopal Church	Santa Monica Boulevard & North Camden Drive	.25
1, 40	Beth Sholom Temple	California Avenue & 19 th Street	.13
1, 25	Central Assembly of God Church	Arizona Avenue & 14 th Street	.16
1, 6	Church of Christ	California Avenue & 4 th Street	.16
1, 5	Church of Saint Augustine By the Sea	Wilshire Boulevard & 4 th Street	.00
3, 80	Church of the Good Shepherd	North Bedford Drive & Park Way	.17
1, 36	Church of the Nazarene	Washington Avenue & 18 th Street	.25
5, 150	First Baptist Church	North Las Palmas Avenue & Selma Avenue	.16
1, 12	First Christian Church	Arizona Avenue & 6 th Street	.12
1, 8	First Church of Christ Scientist	Arizona & 5 th Street	.11
5, 151	First United Methodist Church	Franklin Avenue & North Highland Avenue	.19
1, 24	First United Methodist Church of Santa Monica	Washington Avenue & 11 th Street	.22
1, 9	Nichiren Shoshu of America Temple	Wilshire Boulevard & 6 th Street	.00
1, 34	Pilgrim Lutheran Church	Wilshire Boulevard & 17 th Street	.00
5, 134	Saint Ambrose Catholic Church	North Fairfax Avenue & Fountain Avenue	.22
4, 115	Saint Basils Roman Catholic Church	South Kingsley Drive & Wilshire Boulevard	.17
1, 16	Saint Monica Catholic Church	California Avenue & 7 th Street	.15
1, 41	Santa Monica Seventh Day Adventist Church	Arizona Avenue & 19 th Street	.07
1, 59	The Church of Jesus Christ of Latter Day Saints	Centinela Avenue & Arizona Avenue	.12
1, 44	The Lighthouse Church	20th Street & Wilshire Boulevard	.00
1, 22	Trinity Baptist Church	California Avenue & 10 th Street	.15
1, 35	Unitarian Community Church	Arizona Avenue & 18 th Street	.13
4, 113	Wilshire Boulevard Temple of B’nai B’rith	South Hobart Boulevard between West 6 th Street & Wilshire Boulevard	.11
4, 103	Wilshire United Methodist Church	South Plymouth Boulevard & Wilshire Boulevard	.00
4, 164	Saint James Episcopal Church	Wilshire Boulevard & South St. Andrews Place	.00
3, 82	First Church of Christ Scientist	141 South Rexford Drive, Beverly Hills	.10
5, 124	Saint Victor’s Catholic Church	8634 Holloway Drive, West Hollywood	.16
2, 196	Westwood Presbyterian Church	10822 Wilshire Boulevard, Los Angeles, CA 90024	.00
1, 173	Assembly of God	14 Arizona Avenue, Santa Monica, CA 90401	.14



Table 4-4. Other Community Facilities within 0.25-mile of the Westside Corridor (continued)

Sheet No., ID No.	Name	Location	Proximity to Alignment (miles)
1, 174	Christian Institute	1308 2nd Street Santa Monica, CA 90401	.14
1, 175	First Presbyterian Church	1220 2nd Street Santa Monica, CA 90401	.06
1, 176	1 st Church of Santa Monica	1322 2nd Street Santa Monica, CA 90401	.19
1, 177	Breakpoint Bridge Church	On 4th Street between Wilshire Boulevard and Arizona Avenue	.07
1, 178	Metro Church Calvary Chapel	1231 4th Street Santa Monica, CA 90401	.08
1, 179	Saint Peter and Saint Paul Church	1245 4th Street Santa Monica, CA 90401	.11
1, 180	1 st Church of Christ	505 Arizona Avenue Santa Monica, CA 90401	.13
1, 181	Soka Gakkai International	606 Wilshire Boulevard Santa Monica, CA 90401	.00
1, 184	New Age Bible & Philosophy Center	1139 Lincoln Boulevard Santa Monica, CA 90403	.05
1, 185	Living Torah Center/Chabad	1130 Wilshire Boulevard Santa Monica, CA 90401	.00
1, 186	Church of the Living God	1314 17th Street Santa Monica, CA 90404	.16
1, 188	Christian Science Church	1133 South Bundy Drive Los Angeles, CA 90049	.04
2, 189	Shoreline Community Church West Los Angeles	1045 Broxton Avenue Los Angeles, CA 90024	.17
2, 190	28 th Church Christ Scientist	1018 Hilgard Avenue Los Angeles, CA 90024	.06
2, 191	Lutheran Church of the Master	10931 Santa Monica Boulevard Los Angeles, CA 90025	.18
2, 192	Southern California Jewish Center	1651 Westwood Boulevard Los Angeles, CA 90024	.00
2, 193	The Church of Jesus Christ of Latter Day Saints	10777 Santa Monica Boulevard Los Angeles, CA 90025	.00
2, 194	Saint Paul Apostle Catholic Church	10750 Ohio Avenue Los Angeles, CA 90024	.11
2, 195	Kahal Joseph Congregation	10505 Santa Monica Boulevard Los Angeles, CA 90025	.00
4, 197	Oasis Christian Church	5100 Wilshire Boulevard Los Angeles, CA 90036	.00
4, 198	Wilshire Boulevard Temple	3663 Wilshire Boulevard Los Angeles, CA 90010	.08
3, 199	Grace Christian Church	5220 Wilshire Boulevard Los Angeles, CA 90036	.00
2, 200	University Bible Church	10801 Wilshire Boulevard Los Angeles, CA 90024	.00



Table 4-4. Other Community Facilities within 0.25-mile of the Westside Corridor (continued)

Sheet No., ID No.	Name	Location	Proximity to Alignment (miles)
2, 201	Pacific Crossroads Church	10351 Santa Monica Boulevard, Los Angeles, CA 90025	.00
2, 202	Shephardic Temple Tiferet	10500 Wilshire Boulevard Los Angeles, CA 90024	.23
3, 203	Church of Scientology	9885 Charleville Boulevard, Beverly Hills, CA 90212	.04
3, 204	Beverly Hills Presbyterian Church	505 North Rodeo Drive Beverly Hills, CA 90210	.25
3, 205	Church of Religious Science	50 North La Cienega Boulevard, Beverly Hills, CA 90211	.07
3, 206	Los Angeles Church of Religious Science	6404 Wilshire Boulevard Los Angeles, CA 90048	.00
3, 207	Congregation Torah V Chesed	6407 Orange Street West Hollywood, CA 90048	.09
4, 208	Bethel Presbyterian Church	857 South La Brea Avenue Los Angeles, CA 90036	.18
4, 209	Hungarian Reformed Church	751 Crenshaw Boulevard Los Angeles, CA 90005	.16
4, 210	Korean Eastern Presbyterian Church	4270 West 6th Street Los Angeles, CA 90020	.13
4, 211	Our Savior Lutheran Church	6th Street & Bronson Avenue, Los Angeles, California 90010	.09
4, 212	Korean Catholic Renewal Movement	4055 Wilshire Boulevard Los Angeles, CA 90010	.00
4, 213	Ku In Holy Presbyterian Church	4041 Wilshire Boulevard Los Angeles, CA 90010	.00
4, 214	LA Jesus Village Church	4009 Wilshire Boulevard Los Angeles, CA 90010	.00
4, 216	Temple of Soul Truth	Wilton Place/8th Street Los Angeles, California 90005	.25
4, 217	Church of God Word	3960 Wilshire Boulevard Los Angeles, CA 90010	.00
4, 218	California Calvary Church	3921 Wilshire Boulevard Los Angeles, CA 90010	.00
4, 218	Ha Na Korean Wesleyan Church	3921 Wilshire Boulevard Los Angeles, CA 90010	.00
4, 220	Song One Church	3912 Wilshire Boulevard Los Angeles, CA 90010	.00
4, 220	The Church of Joy	3912 Wilshire Boulevard Los Angeles, CA 90010	.00
4, 221	New Life	3850 Wilshire Boulevard Los Angeles, CA 90010	.00
4, 222	Church of Christ	635 South Manhattan Place, Los Angeles, CA 90005	.03
4, 223	Mijoo Yang Kog Presbyterian	519 South Western Avenue Los Angeles, CA 90020	.18
4, 224	Iglesia de Casa De Jesucristo	3907 West 6th Street Los Angeles, CA 90020	.14



Table 4-4. Other Community Facilities within 0.25-mile of the Westside Corridor (continued)

Sheet No., ID No.	Name	Location	Proximity to Alignment (miles)
4, 225	Los Angeles International Church of Christ	3731 Wilshire Boulevard Los Angeles, CA 90010	.00
4, 226	Vision Full Gospel Church	3700 Wilshire Boulevard Los Angeles, CA 90010	.00
4, 227	Nasung Yang Moon Church	695 South Harvard Boulevard, Los Angeles, CA 90005	.17
4, 228	Korean Evangelical Church of America	691 South Harvard Boulevard, Los Angeles, CA 90005	.16
3, 230	Our Lady of Mount Lebanon Church	333 South San Vicente Boulevard, Los Angeles, CA 90048	.00
5, 231	West Hollywood Community Church	Cynthia Street & North San Vicente Boulevard	.19
5, 232	Crescent Heights Methodist Church	Fountain Avenue & North Fairfax Avenue, West Hollywood, CA 90046	.25
5, 233	Chabad Russian Synagogue	7636 Santa Monica Boulevard, West Hollywood, CA 90046	.00
5, 234	WeHo Church	916 North Formosa Avenue West Hollywood, CA 90046	.19
5, 235	Blessed Sacrament Church	6641 West Sunset Boulevard, Los Angeles, CA 90028	.23
5, 236	Living Water Christian Center	1540 North Highland Avenue, Hollywood, CA 90028	.00
Cemeteries			
2, 172	Los Angeles National Cemetery	950 South Sepulveda Boulevard, Los Angeles	.00
2, 70	Dignity Memorial Pierce Brothers Westwood Village Memorial Park and Mortuary	Wilshire Boulevard & Glendon	.00
Hospitals			
3, 117	Cedars-Sinai Medical Center	Beverly Boulevard & South San Vicente	.00
1, 52	Saint John's Hospital & Health Center	20 th Street & Santa Monica Boulevard	.05
2, 62	VA West Los Angeles Healthcare Center	Wilshire Boulevard & Federal Avenue	.00
1, 28	Santa Monica UCLA Medical Center & Orthopedic Hospital	Wilshire Boulevard & 15 th Street	.00
Convalescent			
1, 45	Arbor View Health Care Center	1338 20 th Street Santa Monica, CA 90404	.18
1, 48	Berkeley East Convalescent Hospital	Arizona Avenue & 20 th Street, Santa Monica, CA 90404	.12
1, 31	Berkeley West Convalescent Hospital	1623 Arizona Avenue Santa Monica, CA 92404	.12
1, 56	Brentwood Nursing & Rehabilitation	1321 Franklin Street Santa Monica, CA 90404	.15
3, 89	Carmelite Elder Care Management	8350 Wilshire Boulevard Beverly Hills, CA 90211	.00
3, 99	Comfort Keepers	5478 Wilshire Boulevard Los Angeles, CA 90036	.00
5, 131	Garden of Palms	1025 North Fairfax Avenue West Hollywood, CA 90046	.09



Table 4-4. Other Community Facilities within 0.25-mile of the Westside Corridor (continued)

Sheet No., ID No.	Name	Location	Proximity to Alignment (miles)
5, 136	Gardner Board and Care	1000 North Gardner Street West Hollywood, CA 90046	.14
1, 7	Goldstar Convalescent Hospital	1340 15 th Street Santa Monica, CA 90404	.18
1, 165	Good Shepherd Convalescent	1131 Arizona Avenue Santa Monica, CA 90401	.12
3, 166	Guardian Rehabilitation Hospital	533 South Fairfax Avenue Los Angeles, CA 90036	.24
1, 33	Pacific Convalescent Center	1323 17th St. Santa Monica, CA 90404	.16
5, 139	Raya's Paradise	1156 North Gardner Street West Hollywood, CA 90046	.09
1, 27	Sunrise Assisted Living	1312 15 th Street Santa Monica, CA 90404	.15
3, 93	Williaman Villas HOA	315 South Williaman Drive Los Angeles, CA 90048	.16
1, 58	Mariner Post-Acute	1252 Franklin St. Santa Monica, CA 90404	.07
2, 78	Elder Friends Inc.	1875 Century Park, Los Angeles, CA 90067	.09
3, 88	A and W Homecare	264 La Cienega Blvd. Beverly Hills, CA 90211	.11
4, 104	Impact Clinical Trials (Adult Daycare)	4311 Wilshire Blvd. Los Angeles, CA 90010	.00
4, 111	Wilshire Adult Day Healthcare	3921 Wilshire Blvd. Los Angeles, CA 90010	.00
5, 141	Partners Adult Day Healthcare	7362 Santa Monica Blvd. West Hollywood, CA 90046	.00
5, 146	Sunrise Adult Day Health Center	7014 W. Sunset Blvd. Los Angeles, CA 90028	.19
1, 57	Sunbridge Care Center for Santa Monica	1321 Franklin Street Santa Monica, CA 90404	.15



5.0 ENVIRONMENTAL IMPACTS/ENVIRONMENTAL CONSEQUENCES

Environmental impacts are discussed in terms of both operation and construction -related effects. The operational impacts describe primarily long-term effects associated with increased transit access, while the construction-related impacts identify potential short-term impacts during the construction period. Construction-related effects are discussed for each type of facility and for specific facilities, as appropriate. This discussion is based on applicable information provided in the Task 14.1.18 Construction and Mitigation Technical Report and other analysis, as noted in Section 1 of this report. For an inventory of facilities by alternative, see Sections 4.1 through 4.9 above, as well as Tables 4-1, 5-1, 5-2 and 5-3.

5.1 Operational Impacts—Overview

The degree to which parkland and other community facilities use can be affected by the system operation from noise or emissions is discussed in the following sections. Effects on parklands that are subject to Section 4(f) requirements are summarized here and described in detail in the Draft Section 4(f) Technical Report. Operation of the subway system generally would not impact parklands or other community facilities with the possible exception of facilities located near stations or maintenance and operation facilities. Direct impacts would include any areas permanently removed from existing parklands or other community facilities as a result of the Westside Subway Extension. Indirect impacts would include increased access and usage beyond their capacity of parklands and community facilities (such as churches, medical facilities, day care centers, libraries, cemeteries, and high schools) located near stations, with potential reduction in use at facilities more remote from these stations; reduction in traffic congestion which could benefit police and fire response times. Impact intensity would be highest near stations and would decrease with distance from stations.

Beneficial effects of the project are also discussed in the following sections. Improved access to transit would result in potential beneficial impacts for the community, particularly for the transit-dependent. Enhanced transit access would result in reduced travel time, and increased local and regional connectivity to community facilities and parks.

5.1.1 No Build Alternative

Because the No Build Alternative would not include new major infrastructure, except for those projects that are currently under construction or committed projects planned to be in operation by 2035 and identified in the SCAG *Regional Transportation Plan* and Metro's Long Range Transportation Plan, this alternative is not expected to result in direct or indirect impacts on parklands or community services and facilities.

5.1.2 TSM Alternative

This alternative emphasizes more frequent Metro Rapid and local bus service in the Westside Transit Corridor to reduce delay and enhance mobility. Since enhanced service frequency would increase local and regional connectivity to parklands, usage of parklands along the corridor may increase. However, this is not anticipated to have any adverse direct or indirect impact on parklands or other Section 4(f) lands, such as wildlife areas. The increased service frequency is not anticipated to have any adverse direct or indirect impact



on the following services: police, libraries, schools, medical facilities, religious institutions, cemeteries, or social services. In addition, the TSM Alternative would not involve the construction and operation of new transit facilities on or near existing fire facilities; therefore, no impacts are anticipated to occur.

5.1.3 Alternative 1—Westwood/UCLA Extension

5.1.3.1 Parklands

Alternative 1, including Options 1 through 6, would not obstruct pedestrian or vehicle access to Carthay Circle Park and Hancock Park. The station portal for the Wilshire/La Cienega Station^[JH2] would be located less than 0.25-mile from the parks and could make them more accessible. No other parks would be affected, and no acquisition of parkland would be required. Therefore, Alternative 1 would not result in any direct or indirect adverse impacts on Section 4(f) parkland.

The Wilshire/Fairfax Station and Station Option 2^[JH3], Wilshire/Fairfax East Station, also would not result in impacts to parklands. A potential station portal for the Wilshire/Fairfax Station would be located under the Los Angeles County Museum of Art West near Hancock Park.

5.1.3.2 Police

No police facilities are located along Alternative 1, including Options 1 through 6; therefore, no impacts to police facilities are anticipated. There would be some improvement in traffic flow, which could slightly improve travel times for emergency responses.

5.1.3.3 Fire

The City of Los Angeles Fire Department Station 29 is adjacent to the Alternative 1 alignment along Wilshire Boulevard/Van Ness Avenue. However, since there are no stations proposed adjacent to Station 29 and since the proposed alignment is in a subway configuration, no impacts to fire services are anticipated. There would be some slight improvement in traffic flow, (see Chapter 3) which could slightly improve travel times for emergency responses.

5.1.3.4 Libraries

The station portal for the Wilshire/Western Station would be less than 0.25-mile from the Pio Pico Koreatown Branch Library and also adjacent to the Jewish Community Library; thereby potentially increasing accessibility to both libraries.

5.1.3.5 Schools

Horace Mann Elementary is in close proximity to the Wilshire/La Cienega Station and Option 3 (Wilshire/La Cienega Station Option), UCLA is adjacent to the Westwood/UCLA Station and Option 5 (Westwood/UCLA On-Street Station), and Cathedral Chapel School is in close proximity to the Wilshire/La Brea Station. These schools could benefit from increased accessibility.

Option 4 with either Century City Station would result in a beneficial impact to Beverly Hills High School because it would provide increased accessibility.



5.1.3.6 Medical Facilities

The public would benefit from improved access to regional healthcare and medical institutions, as well as small clinics and private healthcare offices that are located throughout the Study Area. Medical facilities in close proximity to Alternative 1 stations and their options include Century City Hospital and UCLA Medical Center.

Access to Century City Hospital would be improved through the location of Option 4 with a Century City Station at Constellation Boulevard.

5.1.3.7 Cemeteries

Westwood Memorial Park Cemetery and the Los Angeles National Cemetery, which are both in close proximity to the Westwood/UCLA Station and Option 5, Westwood/UCLA On-Street Station option, would benefit from improved access. However, none of the alternatives are expected to disturb any human remains, including those interred outside of formal cemeteries. Due diligence through the retention of an archaeologist and appropriate site monitors would be maintained. All of the Build Alternatives occur in the vicinity of the Los Angeles National Cemetery but would not impact the cemetery.

5.1.3.8 Social Services (Daycare, Senior Centers)

The public would benefit from improved access to social services, including day care and senior centers that are located in close proximity to Alternative 1 stations and their options.

5.1.4 Alternative 2—Westwood/VA Hospital Extension

Impacts to parklands, police and fire services, libraries, schools, religious institutions, cemeteries, and social services would be similar to Alternative 1 and Options 1 through 6. Impacts to medical facilities would also be similar to Alternative 1 with the addition of increased access to the Veterans' Affairs' **West Los Angeles Healthcare Center Alternative 2 (Westwood/VA Hospital) and Option 6 (Westwood/VA Hospital North Station), which includes the VA Hospital.**



Table 5-1. Summary of Impacts to Parklands and Recreation Resources within 0.25-mile of the Alternatives

Sheet No	Name	Location	Proximity to Alignment (miles)	Alternatives and MOS	Land Acquisition	Affect Vehicle Access	Barrier Pedestrian Access
1	Santa Monica State Beach	Pacific Coast Highway & Santa Monica Boulevard (Santa Monica)	.04	3, 5	No	No	No
5	Yucca Park	North Las Palmas Avenue & Yucca Street	.19	4, 5	No	No	No
5	De Longpre Park	De Longpre Avenue & North Cherokee Avenue	.19	4, 5	No	No	No
5	Plummer Park	Fountain Avenue & North Vista Street (West Hollywood)	.00	4, 5	No	No	No
5	Kings Road Park	North Kings Road & Romaine Street (West Hollywood)	.10	4, 5	No	No	No
5	West Hollywood Park	Santa Monica Boulevard & North San Vicente Boulevard (West Hollywood)	.00	4, 5	No	No	No
3	Beverly Gardens Park	Wilshire Boulevard & Santa Monica Boulevard (Beverly Hills)	.19	1, 2, 3, 4, 5, MOS-2	No	No	No
3	Oakhurst Park	Wilshire Boulevard & Oakhurst Drive (Beverly Hills)	.04	1, 2, 3, 4, 5, MOS-2	No	No	No
2	Hancock Park	West 6 th Street & Curson Avenue (Mid-Wilshire, LA County)	.00	1, 2, 3, 4, 5, MOS-1, MOS-2	No	No	No
2	La Cienega Park	Gregory Way & La Cienega Boulevard (Beverly Hills)	.16	1, 2, 3, 4, 5, MOS-2	No	No	No
2	Westwood Park	Wilshire Boulevard & South Sepulveda Boulevard (Los Angeles)	.21	1, 2, 3, 4, 5	No	No	No
1	Douglas Park	Wilshire Boulevard & Chelsea Avenue (Santa Monica)	.00	3, 5	No	No	No
1	Palisades Park	Ocean Avenue & Santa Monica Boulevard (Santa Monica)	.10	3, 5	No	No	No
1	Reed Park	Wilshire Boulevard & 7 th Street (Santa Monica)	.00	3, 5	No	No	No
5	Poinsettia Recreation Center	North Poinsettia Place & Willoughby Avenue (Hollywood/Los Angeles)	.12	4, 5	No	No	No
2	Los Angeles Country Club	Wilshire Boulevard & Comstock Avenue (Los Angeles)	.00	1, 2, 3, 4, 5, MOS 2	No	No	No



5.1.5 Alternative 3—Santa Monica Extension

Impacts to police and fire services, libraries, schools, cemeteries, and social services would be similar to Alternative 2 and Options 1 through 6.

Impacts to parklands, medical facilities, and religious institutions would be similar to Alternative 1 and 2 and Options 1 through 6 with the following exceptions:

- Three additional parks (Douglas Park, Reed Park, and Palisades Park) would be located less than one-quarter mile from the station, potentially increasing access to the parks. The station portal at the Wilshire/4th Station would increase access to these parks. No acquisition of parkland would be required.
- Three additional hospitals (Bel Air Surgical Center, Santa Monica UCLA Medical Center and Orthopedic Hospital and St. John’s Hospital Health Center) would be in close proximity to the Wilshire/Bundy, Wilshire/16th Station and the Wilshire/26th Station, respectively. Proximity to these two stations could provide increased access to the two medical facilities.
- Four additional religious facilities would be located near the proposed stations [JH4]. These additional facilities are the Santa Monica Seventh Day Adventist Church, Unitarian Community Church, Church of Saint Augustine By-The-Sea, and Nichiren Shoshu of America Temple. No direct impacts are expected from the permanent loss or removal of religious facilities.

5.1.6 Alternative 4—Westwood/VA Hospital Extension plus West Hollywood Extension

Impacts to police, fire, cemetery, and social services would be similar to Alternative 2 and Options 1 through 6.

Impacts to parklands, libraries, schools, medical facilities, and religious institutions would be similar to Alternative 1 with the following exceptions:

- Three additional parks in West Hollywood are less than 0.25 mile from the Alternative 4 station portals. The parks are West Hollywood Park, Poinsettia Recreation Center and Plummer Park in West Hollywood. The station portal the Santa Monica/La Brea Station would increase access to these parks. No acquisition of parkland would be required.
- One additional library (West Hollywood Public Library) would be less than 0.25 mile from the Santa Monica/San Vicente Station, potentially increasing access to the library.
- Two additional schools (Hollywood Senior High School and Blessed Sacrament School) are in close proximity to the Hollywood/Highland Station and would experience increased accessibility.
- One additional regional healthcare and medical institution (Cedars Sinai Medical Center) would be in close proximity to the Beverly Center Area Station. Alternative 4 would provide increased access to this medical facility.
- One additional religious facility, Saint Victor’s Catholic Church, would be near Alternative 4. No direct impacts are expected from the permanent loss or removal of religious facilities.



5.1.7 Alternative 5—Santa Monica Extension plus West Hollywood Extension

Impacts to police, fire, cemetery, and social services would be similar to Alternatives 3 and 4 and Options 1 through 6.

Impacts to parklands, libraries, schools, medical facilities, and religious institutions would be similar to Alternatives 3 and 4.

5.1.8 MOS 1

Impacts to parklands and schools would be similar to Alternative 1 and Option 1 between the existing Wilshire/Western Station and the proposed Wilshire/Fairfax Station.

5.1.9 MOS 2

Impacts to parklands, police and fire services, libraries, medical facilities, religious institutions, cemeteries, and social services would be similar to Alternative 1 and Options 1 through 4 between the existing Wilshire/Western Station and the proposed Century City Station.

5.1.10 Future Vehicle Storage and Maintenance for All Alternatives

For all alternatives, future vehicle and storage and maintenance facilities would not result in any direct or indirect adverse impacts on parklands and community facilities and services. No direct or indirect impacts would occur because none of these resources are in close proximity to the proposed storage and maintenance facilities.



Table 5-2. Summary of Impacts to Police, Fire and Library Services Within 0.25-mile of the Westside Corridor

Sheet No	Station	Address	Area of Project Serviced	Proximity to Alignment (miles) ²	Alternatives and MOS	Impact
Police Services						
5, 171	Los Angeles County Sheriff's Department—West Hollywood Station	780 North San Vicente Boulevard, West Hollywood	West Hollywood	.00	4, 5	None
Fire Services						
4, 108	City of Los Angeles Fire Department Station 29	4029 Wilshire Boulevard, Los Angeles	Wilshire Center and Hancock Park	.00	1, 2, 3, 4, 5, MOS 1, MOS 2	None
1, 43	Santa Monica Fire Department Fire Stations 3 & 4	1302 19 th Street, Santa Monica Boulevard	City of Santa Monica	.18	3, 5	None
5, 137	Los Angeles County Fire Department Station 8	7643 Santa Monica Boulevard, West Hollywood	Unincorporated Los Angeles and West Hollywood	.00	4, 5	None
5, 168	Los Angeles County Fire Department Station 7	864 San Vicente Boulevard, West Hollywood	Unincorporated Los Angeles and West Hollywood	.13	4, 5	None
2, 63	Los Angeles Fire Department Station 37	1090 Veteran Avenue, Los Angeles, CA 90024	Westwood and the Western UCLA Campus	.18	2, 3, 4, 5	None
Libraries						
5, 120	Los Angeles Public Library—West Hollywood Branch	715 North San Vicente Boulevard Los Angeles, CA 90069	City of West Hollywood	.00	4, 5	None
4, 112	Pio Pico Koreatown Branch Library	694 South Oxford Avenue Los Angeles, CA 90005	City of Los Angeles (Mid-Wilshire Area)	.11	1, 2, 3, 4, 5, MOS 1, MOS 2	None
1, 13	Santa Monica Public Library	601 Santa Monica Boulevard Santa Monica, CA 90401	City of Santa Monica	.23	3, 5	None
3, 92	Jewish Community Library of Los Angeles—Peter M. Kahn Memorial	6505 Wilshire Boulevard, Los Angeles, CA 90036	County of Los Angeles	.00	1, 2, 3, 4, 5, MOS 1, MOS 2	None



Table 5-3. Summary of Impacts to Other Community Facilities within 0.25-mile of the Westside Corridor

Sheet No.	Name	Location	Proximity to Alignment (miles)	Impacts
Educational Facilities				
Day Care and Pre-Schools				
1, 37	Beth Shir Sholom Early Childhood Center (Pre-school)	1827 California Ave. Santa Monica, CA 90403	.13	None
1, 51	Cassidy Pre-school	2122 Wilshire Blvd. Santa Monica, CA 90403	.00	None
5, 132	Fountain Day School	1128 N Orange Grove Ave. West Hollywood, CA 90046	.04	None
5, 125	Holloway Pre-school	8510 Holloway Drive Los Angeles, CA 90069	.07	None
5, 145	Sunset Montessori Pre-school	1432 N Sycamore Ave Los Angeles, CA 90028	.22	None
5, 140	West Hollywood Pre-school	7377 Santa Monica Blvd. West Hollywood, CA 90046	.18	None
2, 76	Westwood United Methodist Pre-school	10497 Wilshire Blvd. Los Angeles CA 90024	.23	None
4, 167	Wilshire Pre-school	711 S. Plymouth Blvd. Los Angeles, CA 90005	.02	None
1, 1	First Presbyterian Nursery	1220 2nd St. Santa Monica, CA 90401	.03	None
1, 10	Santa Monica YMCA Child Development	1332 6th St. Santa Monica, CA 90401	.17	None
1, 19	Gan Israel Pre-School	1341 9th St. Santa Monica, CA 90401	.18	None
1, 20	Trinity Baptist Church Pre-School	1019 California Ave. Santa Monica, CA 90403	.13	None
1, 30	Lincoln Child Development	1532 California Ave. Santa Monica, CA 90403	.13	None
1, 32	Pilgrim Lutheran Pre-School	1730 Wilshire Blvd. Santa Monica, CA 90403	.00	None
1, 38	Garden of Angels Pre-School	1009 18th St. Santa Monica, CA 90403	.15	None
1, 53	Ulrich Daycare	1305 23rd. St. Santa Monica, CA 90404	.14	None
2, 72	Westwood Presbyterian School	10822 Wilshire Blvd. Los Angeles, CA 90024	.00	None
2, 73	Montessori Discovery Garden	10551 Holman Ave. Los Angeles, CA 90024	.23	None
2, 77	Century City Kids Club	1908 Fox Hills Dr. Los Angeles, CA 90025	.18	None
3, 84	Hebrew Nessah Nursery School	142 S. Rexford Dr. Beverly Hills, CA 90212	.07	None
3, 86	Gan Yaffa Pre-School	177 S. Robertson Blvd. Beverly Hills, CA 90211	.11	None

**Table 5-3. Summary of Impacts to Other Community Facilities within 0.25-mile of the Westside Corridor
(continued)**

Sheet No.	Name	Location	Proximity to Alignment (miles)	Impacts
3, 90	Montessori Children's World	650 S. San Vicente Blvd. Beverly Hills, CA 90048	.05	None
4, 106	Wilton Place Children's Center	4030 Leeward Ave. Los Angeles, CA 90005	.19	None
4, 109	St. James Pre-School	4270 W. 6th St. Los Angeles, CA 90020	.12	None
4, 110	Evergreen Child Care	3960 Wilshire Blvd. Los Angeles, CA 90010	.00	None
4, 116	Wilshire Smiling Tree Pre-School and Kindergarten	611 S. Hobart Blvd. Los Angeles, CA 90005	.14	None
5, 123	West Hollywood Daycare Pre-School	723 Huntley Dr. West Hollywood, CA 90069	.18	None
5, 127	Laurel Children's Center	8023 Willoughby Ave. West Hollywood, CA 90046	.25	None
5, 129	ABC Little School: West Hollywood	927 N. Fairfax Ave. West Hollywood, CA 90046	.22	None
5, 130	Beverly Hills Montessori School	1105 N. Laurel Ave. West Hollywood, CA 90046	.00	None
5, 135	L' Chaim Daycare	7636 Santa Monica Blvd. West Hollywood, CA 90046	.00	None
5, 138	West Hollywood Children's Academy	1030 N. Vista St. West Hollywood, CA 90046	.10	None
5, 142	Gardner Little School	1226 N. Gardner St. West Hollywood, CA 90046	.17	None
5, 143	The Walther School	1246 N. Gardner St. West Hollywood, CA 90046	.20	None
5, 152	The Canyon Co-OP School	1820 N. Las Palmas Ave. Los Angeles, CA 90028	.24	None
2, 245	Creative Center Preschool	10547 Santa Monica Boulevard, Los Angeles, CA 90025	.00	None
3, 247	Beverly Hills Presbyterian Pre-school	505 North Rodeo Drive Beverly Hills, CA 90210	.25	None
Elementary Schools				
3, 81	Beverly Vista Elementary School	Charleville Boulevard & South Rexford Drive	.19	None
1, 60	Brockton Avenue Elementary School	Brockton Avenue & Texas Avenue	.23	None
2, 74	Fairburn Avenue Elementary School	Fairburn Avenue & Rochester Avenue	.01	None
3, 87	Horace Mann Elementary School	South Hamel Drive & Charleville Boulevard	.09	None
5, 128	Laurel Elementary School	North Laurel Avenue & Willoughby Avenue	.22	None
4, 153	Los Angeles Elementary School	Ingraham Street & South Norton Avenue	.07	None

**Table 5-3. Summary of Impacts to Other Community Facilities within 0.25-mile of the Westside Corridor
(continued)**

Sheet No.	Name	Location	Proximity to Alignment (miles)	Impacts
1, 54	McKinley Elementary School	Santa Monica Boulevard & 24th Street	.23	None
4, 107	Wilton Place Elementary School	South Wilton Place & West 8th Street	.23	None
2, 246	El Rodeo Elementary School	605 North Whittier Drive, Beverly Hills, CA 90210	.25	None
Middle Schools				
4, 102	Burroughs Middle School	South McCadden Place between Wilshire Boulevard & West 6th Street	.13	None
1, 26	Lincoln Middle School	California Avenue & 14th Street	.17	None
2, 242	Ralph Waldo Emerson Middle School	1650 Selby Avenue Los Angeles, CA 90024	.20	None
Senior High Schools				
2, 79	Beverly Hills High School	Moreno Drive & Heath Avenue	.03	None
1, 23	Olympic High School	721 Ocean Park Blvd. Santa Monica, CA 90405	.18	None
5, 147	Hollywood Senior High School	North Highland Avenue & West Sunset Boulevard	.00	None
1, 61	University Senior High School	Texas Avenue & South Westgate Avenue	.21	None
Private Schools				
1, 18	Saint Monica Catholic High School	Washington Avenue & Lincoln Boulevard	.21	None
1, 156	Pacifica Christian High School	Lincoln Avenue & California Avenue	.03	None
1, 157	New Roads Middle School	Lincoln Avenue between Wilshire Boulevard & Arizona Avenue	.15	None
3, 95	Cathedral Chapel School	South Cochran Avenue & West 8th Street	.13	None
5, 133	Saint Ambrose School	North Fairfax Avenue & Fountain Avenue	.16	None
4, 164	Saint James Episcopal School	Wilshire Boulevard & South St. Andrews Place	.00	None
1, 15	Saint Monica Parochial School	California Avenue & 7th Street	.17	None
1, 3	Delphi Academy of Santa Monica	4th Street between Wilshire Boulevard & Arizona Avenue	.04	None
5, 148	Blessed Sacrament School	North Laurel Avenue & Santa Monica Boulevard	.03	None
1, 49	Montessori School	West Sunset Boulevard between North Highland Avenue & North Cahuenga Boulevard	.18	None
2, 159	Good Shepherd Catholic School	South Linden Drive & Charleville Boulevard	.04	None

Table 5-3. Summary of Impacts to Other Community Facilities within 0.25-mile of the Westside Corridor (continued)

Sheet No.	Name	Location	Proximity to Alignment (miles)	Impacts
5, 144	Hollywood Schoolhouse	North Highland Avenue & Fountain Avenue	.00	None
3, 118	Maimonides Academy	Huntley Drive & Rosewood Avenue	.09	None
5, 160	Pacific Hills School	Holloway Drive between Hancock Avenue & Westmount Drive	.17	None
4, 161	Wilshire Private School	Wilshire Boulevard & South Longwood Avenue	.00	None
5, 154	Larchmont Charter School—West Hollywood	North Fairfax Avenue & Fountain Avenue	.20	None
4, 155	New Los Angeles Charter School	5100 Wilshire Boulevard, Los Angeles, CA 90036	.00	None
1, 237	Saint Monica Elementary School	1039 7th Street, Santa Monica, CA 90403	.15	None
1, 238	Concord High School	1831 Wilshire Boulevard, Santa Monica, CA 90403	.00	None
1, 240	Lighthouse Christian Academy	1424 Yale Street Santa Monica, CA 90405	.25	None
1, 241	Lighthouse Church School	1220 20th Street Santa Monica, CA 90404	.04	None
2, 243	Saint Paul the Apostle School	1536 Selby Avenue Los Angeles, CA 90024	.12	None
5, 250	The Oaks School	6817 Franklin Ave. Los Angeles, CA 90028	.19	None
5, 251	Green School of Hollywood	1547 North McCadden Place Los Angeles, CA 90028	.05	None
College or Trade Schools				
2, 162	The Chicago School of Professional Psychology—Westwood Campus Address:	Gayley Avenue & Lindbrook Drive	.00	None
1, 169	University of Santa Monica	Wilshire Boulevard & 21st Street	.00	None
2, 170	UCLA	405 Hilgard Avenue, Los Angeles	.00	None
1, 239	Emperor's College of Traditional Oriental Medicine	1807 Wilshire Blvd. Santa Monica, CA 90403	.00	None
2, 244	Concord Law School	10866 Wilshire Blvd Los Angeles, CA 90024	.00	None
1, 248	Cal America Education Institute	3700 Wilshire Boulevard, Los Angeles, CA 90010	.00	None
Religious Facilities				
3, 163	All Saints Episcopal Church	Santa Monica Boulevard & North Camden Drive	.25	None
1, 40	Beth Sholom Temple	California Avenue & 19th Street	.13	None
1, 25	Central Assembly of God Church	Arizona Avenue & 14th Street	.16	None
1, 6	Church of Christ	California Avenue & 4th Street	.16	None
1, 5	Church of Saint Augustine By the Sea	Wilshire Boulevard & 4th Street	.00	None



Table 5-3. Summary of Impacts to Other Community Facilities within 0.25-mile of the Westside Corridor (continued)

Sheet No.	Name	Location	Proximity to Alignment (miles)	Impacts
3, 80	Church of the Good Shepherd	North Bedford Drive & Park Way	.17	None
1, 36	Church of the Nazarene	Washington Avenue & 18th Street	.25	None
5, 150	First Baptist Church	North Las Palmas Avenue & Selma Avenue	.16	None
1, 12	First Christian Church	Arizona Avenue & 6th Street	.12	None
1, 8	First Church of Christ Scientist	Arizona & 5th Street	.11	None
5, 151	First United Methodist Church	Franklin Avenue & North Highland Avenue	.19	None
1, 24	First United Methodist Church of Santa Monica	Washington Avenue & 11th Street	.22	None
1, 9	Nichiren Shoshu of America Temple	Wilshire Boulevard & 6th Street	.00	None
1, 34	Pilgrim Lutheran Church	Wilshire Boulevard & 17th Street	.00	None
5, 134	Saint Ambrose Catholic Church	North Fairfax Avenue & Fountain Avenue	.22	None
4, 115	Saint Basils Roman Catholic Church	South Kingsley Drive & Wilshire Boulevard	.17	None
1, 16	Saint Monica Catholic Church	California Avenue & 7th Street	.15	None
1, 41	Santa Monica Seventh Day Adventist Church	Arizona Avenue & 19th Street	.07	None
1, 59	The Church of Jesus Christ of Latter Day Saints	Centinela Avenue & Arizona Avenue	.12	None
1, 44	The Lighthouse Church	20th Street & Wilshire Boulevard	.00	None
1, 22	Trinity Baptist Church	California Avenue & 10th Street	.15	None
1, 35	Unitarian Community Church	Arizona Avenue & 18th Street	.13	None
4, 113	Wilshire Boulevard Temple of B'nai B'rith	South Hobart Boulevard between West 6th Street & Wilshire Boulevard	.11	None
4, 103	Wilshire United Methodist Church	South Plymouth Boulevard & Wilshire Boulevard	.00	None
4, 164	Saint James Episcopal Church	Wilshire Boulevard & South St. Andrews Place	.00	None
3, 82	First Church of Christ Scientist	141 South Rexford Drive, Beverly Hills	.10	None
5, 124	Saint Victor's Catholic Church	8634 Holloway Drive, West Hollywood	.16	None
2, 196	Westwood Presbyterian Church	10822 Wilshire Boulevard, Los Angeles, CA 90024	.00	None
1, 173	Assembly of God	14 Arizona Avenue, Santa Monica, CA 90401	.14	None
1, 174	Christian Institute	1308 2nd Street Santa Monica, CA 90401	.14	None
1, 175	First Presbyterian Church	1220 2nd Street Santa Monica, CA 90401	.06	None
1, 176	1st Church of Santa Monica	1322 2nd Street Santa Monica, CA 90401	.19	None

Table 5-3. Summary of Impacts to Other Community Facilities within 0.25-mile of the Westside Corridor (continued)

Sheet No.	Name	Location	Proximity to Alignment (miles)	Impacts
1, 177	Breakpoint Bridge Church	On 4th Street between Wilshire Boulevard and Arizona Avenue	.07	None
1, 178	Metro Church Calvary Chapel	1231 4th Street Santa Monica, CA 90401	.08	None
1, 179	Saint Peter and Saint Paul Church	1245 4th Street Santa Monica, CA 90401	.11	None
1, 180	1st Church of Christ	505 Arizona Avenue Santa Monica, CA 90401	.13	None
1, 181	Soka Gakkai International	606 Wilshire Boulevard Santa Monica, CA 90401	.00	None
1, 184	New Age Bible & Philosophy Center	1139 Lincoln Boulevard Santa Monica, CA 90403	.05	None
1, 185	Living Torah Center/Chabad	1130 Wilshire Boulevard Santa Monica, CA 90401	.00	None
1, 186	Church of the Living God	1314 17th Street Santa Monica, CA 90404	.16	None
1, 188	Christian Science Church	1133 South Bundy Drive Los Angeles, CA 90049	.04	None
2, 189	Shoreline Community Church West Los Angeles	1045 Broxton Avenue Los Angeles, CA 90024	.17	None
2, 190	28th Church Christ Scientist	1018 Hilgard Avenue Los Angeles, CA 90024	.06	None
2, 191	Lutheran Church of the Master	10931 Santa Monica Boulevard Los Angeles, CA 90025	.18	None
2, 192	Southern California Jewish Center	1651 Westwood Boulevard Los Angeles, CA 90024	.00	None
2, 193	The Church of Jesus Christ of Latter Day Saints	10777 Santa Monica Blvd. Los Angeles, CA 90025	.00	None
2, 194	Saint Paul Apostle Catholic Church	10750 Ohio Avenue Los Angeles, CA 90024	.11	None
2, 195	Kahal Joseph Congregation	10505 Santa Monica Blvd. Los Angeles, CA 90025	.00	None
4, 197	Oasis Christian Church	5100 Wilshire Boulevard Los Angeles, CA 90036	.00	None
4, 198	Wilshire Boulevard Temple	3663 Wilshire Boulevard Los Angeles, CA 90010	.08	None
3, 199	Grace Christian Church	5220 Wilshire Boulevard Los Angeles, CA 90036	.00	None
2, 200	University Bible Church	10801 Wilshire Boulevard Los Angeles, CA 90024	.00	None
2, 201	Pacific Crossroads Church	10351 Santa Monica Boulevard, Los Angeles, CA 90025	.00	None
2, 202	Shephardic Temple Tiferet	10500 Wilshire Boulevard Los Angeles, CA 90024	.23	None



Table 5-3. Summary of Impacts to Other Community Facilities within 0.25-mile of the Westside Corridor (continued)

Sheet No.	Name	Location	Proximity to Alignment (miles)	Impacts
3, 203	Church of Scientology	9885 Charleville Boulevard, Beverly Hills, CA 90212	.04	None
3, 204	Beverly Hills Presbyterian Church	505 North Rodeo Drive Beverly Hills, CA 90210	.25	None
3, 205	Church of Religious Science	50 North La Cienega Boulevard, Beverly Hills, CA 90211	.07	None
3, 206	Los Angeles Church of Religious Science	6404 Wilshire Boulevard Los Angeles, CA 90048	.00	None
3, 207	Congregation Torah V Chesed	6407 Orange Street West Hollywood, CA 90048	.09	None
4, 208	Bethel Presbyterian Church	857 South La Brea Avenue Los Angeles, CA 90036	.18	None
4, 209	Hungarian Reformed Church	751 Crenshaw Boulevard Los Angeles, CA 90005	.16	None
4, 210	Korean Eastern Presbyterian Church	4270 West 6th Street Los Angeles, CA 90020	.13	None
4, 211	Our Savior Lutheran Church	6th Street & Bronson Avenue, Los Angeles, California 90010	.09	None
4, 212	Korean Catholic Renewal Movement	4055 Wilshire Boulevard Los Angeles, CA 90010	.00	None
4, 213	Ku In Holy Presbyterian Church	4041 Wilshire Boulevard Los Angeles, CA 90010	.00	None
4, 214	LA Jesus Village Church	4009 Wilshire Boulevard Los Angeles, CA 90010	.00	None
4, 216	Temple of Soul Truth	Wilton Place/8th Street Los Angeles, California 90005	.25	None
4, 217	Church of God Word	3960 Wilshire Boulevard Los Angeles, CA 90010	.00	None
4, 218	California Calvary Church	3921 Wilshire Boulevard Los Angeles, CA 90010	.00	None
4, 218	Ha Na Korean Wesleyan Church	3921 Wilshire Boulevard Los Angeles, CA 90010	.00	None
4, 220	Song One Church	3912 Wilshire Boulevard Los Angeles, CA 90010	.00	None
4, 220	The Church of Joy	3912 Wilshire Boulevard Los Angeles, CA 90010	.00	None
4, 221	New Life	3850 Wilshire Boulevard Los Angeles, CA 90010	.00	None
4, 222	Church of Christ	635 South Manhattan Place, Los Angeles, CA 90005	.03	None
4, 223	Mijoo Yang Kog Presbyterian	519 South Western Avenue Los Angeles, CA 90020	.18	None
4, 224	Iglesia de Casa De Jesucristo	3907 West 6th Street Los Angeles, CA 90020	.14	None

**Table 5-3. Summary of Impacts to Other Community Facilities within 0.25-mile of the Westside Corridor
(continued)**

Sheet No.	Name	Location	Proximity to Alignment (miles)	Impacts
4, 225	Los Angeles International Church of Christ	3731 Wilshire Boulevard Los Angeles, CA 90010	.00	None
4, 226	Vision Full Gospel Church	3700 Wilshire Boulevard Los Angeles, CA 90010	.00	None
4, 227	Nasung Yang Moon Church	695 South Harvard Boulevard, Los Angeles, CA 90005	.17	None
4, 228	Korean Evangelical Church of America	691 South Harvard Boulevard, Los Angeles, CA 90005	.16	None
3, 230	Our Lady of Mount Lebanon Church	333 South San Vicente Boulevard, Los Angeles, CA 90048	.00	None
5, 231	West Hollywood Community Church	Cynthia Street & North San Vicente Boulevard	.19	None
5, 232	Crescent Heights Methodist Church	Fountain Avenue & North Fairfax Avenue, West Hollywood, CA 90046	.25	None
5, 233	Chabad Russian Synagogue	7636 Santa Monica Boulevard, West Hollywood, CA 90046	.00	None
5, 234	WeHo Church	916 North Formosa Avenue West Hollywood, CA 90046	.19	None
5, 235	Blessed Sacrament Church	6641 West Sunset Boulevard, Los Angeles, CA 90028	.23	None
5, 236	Living Water Christian Center	1540 North Highland Avenue, Hollywood, CA 90028	.00	None
Cemeteries				
2, 172	Los Angeles National Cemetery	950 South Sepulveda Boulevard, Los Angeles	.00	None
2, 70	Dignity Memorial Pierce Brothers Westwood Village Memorial Park and Mortuary	Wilshire Boulevard & Glendon	.00	None
Hospitals				
3, 117	Cedars-Sinai Medical Center	Beverly Boulevard & South San Vicente	.00	None
1, 52	Saint John's Hospital & Health Center	20th Street & Santa Monica Boulevard	.05	None
2, 62	VA West Los Angeles Healthcare Center	Wilshire Boulevard & Federal Avenue	.00	None
1, 28	Santa Monica UCLA Medical Center & Orthopedic Hospital	Wilshire Boulevard & 15th Street	.00	None
Convalescent				
1, 45	Arbor View Health Care Center	1338 20th Street Santa Monica, CA 90404	.18	None
1, 48	Berkeley East Convalescent Hospital	Arizona Avenue & 20th Street, Santa Monica, CA 90404	.12	None
1, 31	Berkeley West Convalescent Hospital	1623 Arizona Avenue Santa Monica, CA 92404	.12	None



Table 5-3. Summary of Impacts to Other Community Facilities within 0.25-mile of the Westside Corridor (continued)

Sheet No.	Name	Location	Proximity to Alignment (miles)	Impacts
1, 56	Brentwood Nursing & Rehabilitation	1321 Franklin Street Santa Monica, CA 90404	.15	None
3, 89	Carmelite Elder Care Management	8350 Wilshire Boulevard Beverly Hills, CA 90211	.00	None
3, 99	Comfort Keepers	5478 Wilshire Boulevard Los Angeles, CA 90036	.00	None
5, 131	Garden of Palms	1025 North Fairfax Avenue West Hollywood, CA 90046	.09	None
5, 136	Gardner Board and Care	1000 North Gardner Street West Hollywood, CA 90046	.14	None
1, 7	Goldstar Convalescent Hospital	1340 15th Street Santa Monica, CA 90404	.18	None
1, 165	Good Shepherd Convalescent	1131 Arizona Avenue Santa Monica, CA 90401	.12	None
3, 166	Guardian Rehabilitation Hospital	533 South Fairfax Avenue Los Angeles, CA 90036	.24	None
1, 33	Pacific Convalescent Center	1323 17th St Santa Monica, CA 90404	.16	None
5, 139	Raya's Paradise	1156 North Gardner Street West Hollywood, CA 90046	.09	None
1, 27	Sunrise Assisted Living	1312 15th Street Santa Monica, CA 90404	.15	None
3, 93	Williaman Villas HOA	315 South Williaman Drive Los Angeles, CA 90048	.16	None
1, 58	Mariner Post-Acute	1252 Franklin St. Santa Monica, CA 90404	.07	None
2, 78	Elder Friends Inc.	1875 Century Park, Los Angeles, CA 90067	.09	None
3, 88	A and W Homecare	264 La Cienega Blvd. Beverly Hills, CA 90211	.11	None
4, 104	Impact Clinical Trials (Adult Daycare)	4311 Wilshire Blvd. Los Angeles, CA 90010	.00	None
4, 111	Wilshire Adult Day Healthcare	3921 Wilshire Blvd. Los Angeles, CA 90010	.00	None
5, 141	Partners Adult Day Healthcare	7362 Santa Monica Blvd. West Hollywood, CA 90046	.00	None
5, 146	Sunrise Adult Day Health Center	7014 W. Sunset Blvd. Los Angeles, CA 90028	.19	None
1, 57	Sunbridge Care Center for Santa Monica	1321 Franklin Street Santa Monica, CA 90404	.15	None



6.0 MITIGATION MEASURES

This section identifies mitigation measures specific to parklands and community facilities, where appropriate for the identified operational and construction-related impacts.

6.1 Mitigation for Operational Impacts

Project operations would not result in adverse impacts to parks and community facilities. No mitigation is required.

6.2 Mitigation for Construction Impacts

This section proposes specific mitigation measures to minimize construction impacts to parklands and community facilities. Such measures include short-term functional replacement, as well as coordination efforts between agencies, any agreements, and/or further project development effort related to mitigation.

To mitigate potential construction impacts to parklands and community facilities from Build Alternatives 1, 2, 3, 4, and 5 and MOSs 1 and 2 that could occur from short-term functional replacement, Metro will:

Inform the school districts and private school institutions along the alignment of changes to Metro bus routes, school bus routes, and pedestrian crossings prior to construction;

Work with transportation, police, fire, public works, and community services departments of jurisdictions along the alignment to implement mutually agreed upon measures, such as posting of clearly marked signs, pavement markings, lighting as well as implementing safety instructional programs to increase the safety of pedestrians, particularly in the vicinity of schools. Measures will be developed to conform to Metro Rail Transit Design Criteria and Standards, Fire/Life Safety Criteria, Volume IX;

Provide at no charge to school districts an instructional rail safety program with materials to all affected elementary and middle schools;

Contractors will be required to control traffic during construction by following the “Work Area Traffic Control” Manual (most recent edition) prepared by the City of Los Angeles; Standard Plan S-610-12, “Notice to Contractors-Comprehensive” (most recent edition), prepared by Bureau of Engineering, City of Los Angeles; and “Standard Specifications for Public Works Construction” (most recent edition). Comparable standards would be enforced for work conducted in the other jurisdictions along the alignment;

Unless unforeseen circumstances dictate, no designated major or secondary highway will be closed to vehicular or pedestrian traffic. No collector or local street or alley will be completely closed preventing local vehicular or pedestrian access to residences, businesses, or other establishments;

Provide an on-going informational program to nearby medical facilities, senior centers, and parks if requested by these facilities to increase safety. The program will be similar to that described for the schools except the information and materials provided will be geared toward senior citizens.



For additional construction mitigation measures, refer to Task 14.1.18 Construction and Mitigation Technical Report.

6.3 CEQA Determination

A project would normally have a significant impact on parklands and public services if it would¹⁹ result in substantial adverse physical impacts associated with the provision of new or physically altered governmental facilities, the need for new or physically altered governmental facilities, the construction of which could cause significant environmental impacts, in order to maintain acceptable service ratios, response times, or other performance objectives for any public services. The list of public services includes fire and police protection, schools, parks, and other public facilities. In addition to these impacts, a project would normally have a significant impact on parklands if it would:

- Increase the use of existing neighborhood and regional parks or other recreational facilities such that substantial physical deterioration of the facility would occur or be accelerated
- Include recreational facilities or require the construction or expansion of recreational facilities, which might have a physical effect on the environment

Likewise, a project would normally have a significant impact on public facilities if it would impair implementation of or physically interfere with an adopted emergency response plan or emergency evacuation plan.

No parklands would be displaced or pedestrian and vehicular access to parklands disrupted; therefore, no impacts would occur.

Potential construction impacts on parklands and community facilities would be less than significant after mitigation measures are implemented.

6.4 Impacts Remaining After Mitigation

Potential impacts on parklands and community facilities would be less than significant after mitigation measures are implemented.

¹⁹ See L.A. California Environmental Quality Act Thresholds Guide, which addresses impacts to public services under Section K.

References

- City of Beverly Hills. 2008. Draft General Plan. Available at: http://www.beverlyhills.org/services/planning_division/plan/2008_draft_general_plan.asp
- City of Los Angeles. 1973. General Plan—Open Space Plan. Available at: http://cityplanning.lacity.org/Code_Studies/GeneralElement/openspaceelement.pdf
- City of Los Angeles. 1973. General Plan—Public Recreation Plan. Available at: http://cityplanning.lacity.org/Code_Studies/GeneralElement/PublicRecreationPlan.pdf
- City of Los Angeles. 2001. General Plan Framework Land Use. Available at: <http://cityplanning.lacity.org/cwd/framwk/chapters/03/03.htm>
- City of Los Angeles. 2001. General Plan Framework Open Space and Conservation. Available at: <http://cityplanning.lacity.org/cwd/framwk/chapters/06/06.htm>
- City of Los Angeles. 2001. General Plan Framework Infrastructure and Public Services. Available at: <http://cityplanning.lacity.org/cwd/framwk/chapters/09/09.htm>
- City of Los Angeles. 2001. Wilshire Community Plan. Available at: <http://cityplanning.lacity.org/complan/pdf/wilcptxt.pdf>
- City of Los Angeles. 1999. Westwood Community Plan. Available at: <http://cityplanning.lacity.org/complan/pdf/wwdcptxt.pdf>
- City of Santa Monica. 2009. Draft General Plan Land Use and Circulation Element. Available at: <http://www.shapethefuture2025.net/>
- City of Santa Monica. 1997. General Plan Open Space Element.
- City of West Hollywood. 2004. General Plan, Section 1.0 Land Use and Urban Design; Section 2.0 Public Open Space Urban Design; Section 7.0 Education and Cultural; Section 8.0 Public Safety; Police and Fire; Section 9.0 Parks and Recreation.
- County of Los Angeles. 2008. Draft General Plan, Chapter 3 Land Use Element; Chapter 6 Conservation & Open Space Element; Chapter 9 Public Services and Facilities Element. Available at: <http://planning.lacounty.gov/generalplan#anc-download>
- Personal communication between Glenn DeBerg and Captain Tom Richards at 2:36pm on 03/10/10.
- Personal communication between Glenn DeBerg and Captain Rick McLaren at 3:40pm on 03/10/10.
- Personal communication between Glenn DeBerg and Fernando Romero at 2:26pm on 03/10/10.
- Personal communication between Glenn DeBerg and Roger Askin at 2:20pm on 03/10/10.
- Personal communication between Glenn DeBerg and Sergeant Bowman at 1:25 pm on 04/09/10.
- Personal communication between Glenn DeBerg and Commander Goldman at 1:45 pm on 04/09/10.

